

# Results, 1987 ARRL International DX Contest

C'mon sunspots!

By Billy Lunt, KR1R

Contest Manager, ARRL HQ

and Mark Burke, KA1MIS

Assistant Contest Manager, ARRL

This year's ARRL International DX Contest shows that participation is again on the increase. Go sunspots! From looking over the contest results from the last sunspot cycle until the present, it is clear that the amount of participation is in direct proportion with the number of sunspots. HQ received a total of 2782 logs this year, marking an increase of 391 logs over last year and an increase of 435 over 1985. Although conditions were not ideal for the 1987 Contest, we received both good and bad reports. The worst complaint was probably a high level of noise on the bands along with the lack of band openings. On the other hand, KB1XD boasts of great conditions on 40 meters and KW6Q says that he doubled his score from his last year's effort. A comparison look at all the scores shows that there was a slight increase over last year's scores.

W/VE contesters, phone and CW alike, enjoyed working new countries for multipliers while increasing their country totals for the popular Golden Jubilee DXCC Award being offered this year. This undoubtedly was a factor in some of the large scores of DX entries. Whatever the factor, multiplier hunting is not only fun but imperative for a win, along with high QSO totals. Twenty meters again this year supplied the most multipliers and QSOs. Ten and fifteen both showed slight increases as the sunspot numbers went up. Also, the low bands increased on the ability to supply multipliers.

## W/VE Highlights

This year's W/VE single-op CW plaque was a battle of the Northeast with the entire top ten scores over 1.2 million and seven out of the ten from "1-land." Bob, KQ2M, guest oping at KM1H's NH station, won the CW plaque with a comfortable 28k edge over second place winner Stu, KC1F also from NH. Tom, K1KI, from CT, earned a respectable third place win with 1.6 million points.

Although the scores were a bit lower on phone, the fight for the plaque was just as fierce. Veteran John, K1AR, took the plaque by beating out the field of five Northeast single op stations occupying the top phone spots. Second place CW winner Stu, KC1F, was also the runner up on phone with 1.49 megs just ahead of Jeff, K1ZM with 1.46 megs.

The low power class (150 W or less) was won again this year by Gus, VO1MP, on CW bettering his last year's score by 26k. Second place honors go to N0DH and third to W2TZ. Fred, W2TZ, not only accomplished 3rd on CW, but managed to move up the ladder

from 4th place last year to capture the first place phone spot this year. Second place phone goes to K8NZ and third to N5AW.

The top QRP winners are unchanged for 1987 with NN4Q on CW and K3WS on phone. W8VSK moved up a notch from 3rd in '86 to 2nd place QRP CW this year. KD6PY claimed the runner-up QRP phone spot for 1987.

The single-band activity was plentiful

during both CW and phone weekends. In the CW battle, K1ZM took first place on 160-meters with 16k. W1FV reclaims the 80-meter crown again this year with 150k points. K4XS made a good showing to win the 40-meter spot with 194k. K1RM was the 20-meter winner with 336k. W5VX was tops on 15 scoring 17k and K9LZ/5 was the 10-meter plaque winner with 3k. During the phone weekend, K5UR edged out WB9HAD

## Affiliated Club Program

Unlimited Category	Score	Entries	CW Winner	Phone Winner
<b>Yankee Clipper Contest Club</b>	42,740,277	76	KM1H(KQ2M)	K1AR
Frankford Radio Club	40,844,525	85	N2LT	KT3M
Northern California DX Club	7,890,282	56	K6DR	WZ6Z
Southern California DX Club	7,826,064	66	W6AE	KM6B
<b>Medium Category</b>				
<b>Potomac Valley Radio Club</b>	13,612,836	42	KC8C/3	KE9A
Mad River Radio Club	9,366,051	21	K3LR	K8AZ
North Texas Contest Club	6,331,089	19	N5RZ	N5JB
Dixie DXers	5,016,132	20	WX4G	NQ4I
Eastern Iowa DX Assn	4,009,791	46	W0WP	KF0H
Murphy's Marauders	3,838,596	17	K1ZZ	K1WA
Kansas City DX Club	3,208,671	15	W0JLC	N7DF
Grand Mesa Contesters	3,104,517	11	W0KEA	K0UK
Western Washington DX Club	2,266,491	29	NN7L	NN7L
Southeastern DX Club	917,751	26	WN4KKN	W4DXI
South Jersey Radio Assn	444,984	15	W2PAU	W2PAU
<b>Local Category</b>				
<b>Overlook Mountain ARC</b>	4,176,459	9	K2UR	KY2J
Texas DX Society	3,768,846	8	N5IVF	N5JJ
Central Virginia Contest Club	3,352,011	8	N4HB	NK4J
Hoosier Contest Club	2,374,017	4	W9RE	W9RE
Carolina DX Assn	1,607,679	8	N4IR	N4ZC
Boiled Owls of New York	1,395,327	6	K2LE/1	W2GGE
Northern Alabama DX Club	1,202,175	8	KR4F	WZ4F
Long Island Contest Club	1,181,760	5	KD3RD	KD2TT
Willamette Valley DX Club	1,014,018	9	KA7FEF	K5MM/7
Northern California Contest Club	738,480	7	WE6G	K16CG
Dauberville DX Assn	665,352	9	K3ZLK	KQ3V
Rochester (NY) DX Assn	661,974	3	W2TZ	W2TZ
Central Arizona DX Assn	596,805	9	WA7KLB	KC7V
Rubber Circle Contest Club	581,460	3	K7LXC	K7GEX
Colorado Contest Conspiracy	462,648	4	K0ZX	W0OSK
Mississippi Valley DX/Contest Club	461,352	6	AK0M	W0HBH
San Diego DX Club	458,336	9	N6ND	N6AW
Western New York DX Assn	423,951	5	W2FXA	WB2ABD
Delta DX Assn	355,674	7	NT5G	WB5SSD
Southern California Contest Club	353,925	6	NE6I	NE6I
Northern New Mexico ARC	317,460	3	N5EPA	N5EPA
Long Island DX Assn	315,192	10	K2YGM	K1EFI
Ohio Valley ARA	312,429	5	W8RSW	W8RSW
Alamo DX Amigos	272,988	7	K5DB	K5DB
Columbus ARA	266,346	5	K9ALP	W8NPF
Fox River Radio League	252,597	5	K2OWE	K2OWE
Southern Florida DX Assn	246,231	3	W4OO	K8UNP
Albany ARA	241,743	3	N2AIF	N2AIF
Four Lakes ARC	209,091	3	N9BUS	N9BUS
River City Contesters	204,768	3	KV6H	KV6H
Redwood Empire DX Assn	171,186	5	K6ZUR	N6OJ
Steel City ARA	138,882	3	—	N3DHC
Northern Ohio DX Assn	125,457	3	N8BC	N8BC
Greater Milwaukee DX Assn	118,287	3	N9AW	N4TZ
Eastern Michigan ARC	109,086	7	AC8W	N8CQA
Society of Midwest Contesters	88,857	8	W9REC	AG9E
Central California DX Club	67,560	3	W6BYH	W6BYH
Penn Wireless Assn	53,850	3	—	K3TX
Utica ARC	44,139	4	—	KE7KF
Rappahannock Valley Radio Club	35,868	4	KA4RLJ	KA4RLJ
DX Assn of Connecticut	25,470	5	AB1U	AB1U
Great South Bay ARC	2,907	3	—	N2GYN

## Top Ten—W/VE Phone

Call	Score	160	80	40	20	15	10
K1AR	1,584,375	40/32	100/57	102/56	1264/117	99/51	20/12
KC1F	1,492,542	32/27	92/48	62/41	1459/110	96/44	17/13
K1ZM	1,462,860	47/36	176/66	96/51	1119/111	102/43	18/8
K3M	1,301,724	38/32	117/58	123/54	1025/104	91/47	24/11
W3BGN	1,235,874	36/28	102/58	96/43	1071/109	77/43	24/12
W9RE	1,227,963	34/22	96/51	117/51	989/107	122/49	39/13
KM6B	1,111,560	21/17	78/42	548/38	403/71	482/52	38/16
N2LT	1,070,118	26/22	84/46	92/47	1044/106	75/35	20/10
N2IC/Ø	993,510	21/12	68/36	175/36	542/92	468/48	56/35
KØUK	908,988	13/11	47/29	402/32	354/69	587/54	33/16

## Top Ten—W/VE CW

Call	Score	160	80	40	20	15	10
KM1H (KQ2M, op)	1,763,715	73/41	365/62	323/67	1087/90	52/35	15/12
KC1F	1,735,344	51/37	301/64	410/69	1006/87	69/41	17/14
K1K1	1,628,928	32/24	246/60	476/79	955/83	62/41	21/16
K1TO	1,462,272	38/28	268/58	362/62	1195/79	33/22	8/7
N2LT	1,453,140	25/21	156/53	448/68	1048/84	60/37	18/13
K1AR	1,399,398	27/24	242/58	447/75	847/86	57/36	11/7
AA1K	1,352,295	53/34	378/58	314/56	882/74	60/33	14/10
K1BW	1,312,038	45/30	337/58	298/61	899/79	45/29	14/10
W3BGN	1,309,608	45/34	236/58	365/52	994/73	44/32	9/9
K1CC	1,296,822	47/28	274/53	314/63	995/77	45/31	7/5

## Top Ten—DX Phone

Call	Score	160	80	40	20	15	10
V31CV	7,844,760	407/55	1367/57	1106/57	2464/58	2251/57	329/46
HR6A (WB5VZL, op)	6,697,920	328/52	947/56	1045/56	2183/57	2021/56	453/43
8P6B	5,996,823	172/41	915/55	747/55	2252/58	2203/57	352/35
ZF2JR	5,807,826	404/54	889/57	894/58	2090/58	1640/56	389/24
6Y5V (AI6V, op)	5,446,647	383/53	1272/53	508/53	2352/58	1570/55	154/19
XE2KJ (AA5B, op)	3,451,476	87/31	878/54	680/54	2416/55	762/41	11/3
4M4A	3,131,208	117/37	457/47	474/50	1498/56	918/56	304/34
CE3BFZ	2,720,340	0/0	216/46	224/48	954/55	1379/57	797/48
WR6R/KH6	2,398,320	45/20	604/56	383/40	1429/58	1134/54	119/12
EA9IE	2,029,302	86/34	520/45	207/44	1507/55	727/44	0/0

## Top Ten—DX CW

Call	Score	160	80	40	20	15	10
P4ØGD (W2GD, op)	4,808,259	309/51	673/54	1116/57	961/57	1478/57	456/45
NP4A (NP4Z, op)	4,585,602	268/52	489/55	1163/57	1166/58	1257/56	303/51
PJ9J	3,678,819	290/49	404/51	739/54	865/57	1211/55	434/45
4M4A (K3UOC, op)	3,039,858	132/43	389/48	706/53	1317/57	955/55	107/25
XE2KJ (AA5B, op)	2,471,382	85/36	397/51	802/53	1027/55	868/54	14/9
EA8RJ (OH2BH, op)	2,224,218	79/33	449/49	606/48	1497/57	551/45	1/1
K5KG/LU	2,062,341	1/1	80/28	302/51	809/56	1029/56	608/51
XE2GBD (N6EK, op)	1,333,116	80/27	278/44	564/51	572/53	442/47	13/6
OK1ALW	1,134,420	69/25	257/41	634/47	1058/57	26/15	0/0
N4RP/C6A	1,105,188	99/31	279/46	350/52	466/55	363/49	4/3

by 2k to win the 160-meter plaque. W5WMU won the 80-meter plaque by scoring 29k. W6AQ (WA6OTU, op) was tops on 40 meters with 70k. On 20 meters, it was VO1SA with 643k. Fifteen-meter winner was West Coaster K6SVL. Ten-meter champ was KE5FI with 22k.

The multioperator class showed close competition again this year. In the multi-single class, K3KG and crew edged out K1YR by only 33k for the CW plaque. K3TUP with 1.7 megs won the phone plaque, beating 2nd place N3RS by 341k. The state of Texas boasts of both multi two-transmitter class winners for 1987. NR5M in STX took the CW plaque beating N3RG by 24k. K5RX in NTX with 2.8 megs won the phone plaque by beating K2TR with 1.9 megs. In the multi-unlimited class W3LPL and crew, last year's winner, won the CW crown easily again this year scoring 3.4 million points to outdistance runner up W3GM, who scored 1.8 million points. Last year's multi-two winner, K4XS and crew, tried multi-multi phone in '87 to the tune of 2.6 million points and won the plaque, beating the second place team,

NR5M, with 2.4 megs.

## DX Highlights

The DX battles proved to be fierce again in '87 with only a few points separating the winners. P4ØGD (W2GD, op), with 4.8 million points, managed to edge out NP4A (NP4Z, op) with 4.5 megs to win the single op CW plaque. The phone plaque was a bit of a runaway with V31CV winning by 1.2 megs over second-place HR6A (WB5VZL, op).

The DX multiop crews had their work cut out for them with tough fights in all classes. In the multi-single class, the CW plaque winner was ZF2KE with 4.5 million points, edging out second place winner K5NA/KP2 with 4 megs. The phone plaque was won by NP4CC with 6.8 million points, beating runner-up PJ9J with 6.6 million. The CW multi-two plaque was won easily by XE2FU scoring 5 million points to beat second place winner GB4DX with 1 million. The multi-two phone plaque winner, K2SS/VP2V, scored 8.9 million points to outdistance the runner-up, JA1YWX, with 703k. The multi-multi

## Top W/VE Single-Band Scores—Phone

160	20
K5UR 14,310	VO1SA 643,560
WB9HAD 12,126	K1RU 515,040
WA4SVO 8,910	AK1A 453,675
VE1BNN 6,216	W7WA 451,572
AB1A 5,883	N7TT 309,060
WØZV 4,896	K4XS 226,368
W2FCR 3,840	W3YY 223,344
KF4HK 3,744	W4XJ 223,200
N8ATR 3,600	N7DF 158,013
K3UA 3,240	W8TWA 142,140

80	15
W5WMU 29,736	K6SVL 154,566
KW8N 17,820	K6VI 73,788
KS9K 14,841	KE7C 62,436
KN5S 10,332	K3RV 59,427
N3AHF 10,209	K3KG 57,324
K3ND 6,930	WB5UDX 42,582
K7UR 4,836	K1RM 39,321
N9BUS 4,680	WA2QNW 31,785
KC8PQ 2,997	WS5O 31,455
K1HKI 2,808	KØZX 28,905

40	10
W6AQ (WA6OTU, op) 70,875	KE5FI 22,680
K4SW 40,863	N4EJW (N4EJV, op) 12,288
K4RIG 31,980	WA7KLK 6,006
KØDD 29,646	K9LA/5 3,192
K5KT/6 29,298	KD1U 1,764
K8XR 27,360	K1UO 1,260
K2DM 24,024	W3PWO 1,044
W9CH 17,442	WA6TKT 495
K8PO 13,662	KE2N 462
K1IK 12,420	KN8D 180

## Top W/VE Single-Band Scores—CW

160	20
K1ZM 16,560	K1RM 336,900
K4TEA 8,760	K1RU 289,170
W1NG 6,156	KØRF 240,219
N4IN 4,608	K2SS 204,750
N4SU 4,500	WD8LLD 191,241
K1IK 3,444	K9QVB 173,376
WØZV 2,925	KJ9D 162,810
K3UA 2,652	W5FO 151,164
KJ9I 1,680	WØYK 139,308
VE3INQ 1,596	N6GG 126,480
	NG2X 112,890

80	15
W1FV 150,696	W5VX 78,192
N4ZC 112,860	K1ZX 65,700
KC1Q 89,043	N6ND 43,746
KD2RD 69,540	N4VZ 43,680
K2SX 15,867	WB4TDH 42,411
WB2ABD 10,944	W5AC (WQ5C, op) 26,928
W4VQ 10,323	WB5UDX 17,670
WØUO 9,660	WD8AUB 15,141
W6BIP 9,207	KE7C 12,519
KV8Q 8,505	N4TG 9,576

40	10
K4XS 194,400	K9LA/5 3,060
WN4KKN 180,810	WB7FDQ 2,520
W7EJ 170,718	W5VLX 2,160
WØUA 137,592	KD1U 1,782
KU2C 123,516	WB8JBM (KW8N, op) 1,488
N2DT 102,837	N4JF 1,350
NE6I 95,178	W8AKS/6 594
K2KIR 50,820	K4RDU 462
K5RR (WD5K, op) 48,675	KE2N 210
K4FU 43,281	W4DRK 189

CW plaque winner was KH6XX (4.2m) and second place winner was 4N2E (1.5m). The multi-multi phone plaque fight was a bit closer. VP9AD (6.4m) squeezed out KH6XX (6.0m) for top honors.

## Affiliated Club Competition

This year four clubs made it to the Unlimited Category. The Yankee Clipper Contest Club got it together and scored 42 million points to beat rival Frankford Radio Club by 2 million points for the gavel. The Potomac Valley Radio Club returns for another year as Medium Club Category winners with a combined score of 13 million



## Top W/VE Multioperator Scores—Phone

### Single Transmitter

Call	Score	160	80	40	20	15	10
K3TUP	1,742,004	36/28	110/56	119/51	1467/126	75/45	19/12
N3RS	1,399,380	30/28	120/63	128/57	945/108	135/61	47/15
K1CC	1,215,396	39/31	81/52	82/49	1059/106	98/49	19/7
WB2ULI	1,109,469	18/16	122/64	54/36	1174/105	67/33	4/3
N0XA	1,067,346	38/29	105/51	119/45	691/96	173/56	56/24

### Two Transmitter

K5RX	2,811,240	57/39	159/64	302/69	927/116	744/86	91/37
K2TR	1,967,868	62/42	129/63	163/57	1378/113	152/52	34/15
N3RG	1,817,244	45/35	184/71	135/56	1145/106	154/63	53/22
AA1K	1,297,812	46/32	159/62	88/48	917/103	121/55	38/16
K9MWM	1,193,508	35/23	64/35	274/40	504/91	623/49	42/20

### Unlimited

KX4S	2,647,296	56/39	153/67	274/77	1565/125	200/59	56/16
NR5M	2,427,696	36/25	125/57	379/65	921/110	601/75	137/36
W3LPL	2,297,061	69/41	312/77	183/58	1142/104	252/71	73/26
K5NA	1,590,177	51/35	94/53	86/44	1558/111	75/33	9/7
W3GM	1,571,328	41/34	107/56	140/57	1023/108	161/64	64/22

## Top W/VE Multioperator Scores—CW

### Single Transmitter

Call	Score	160	80	40	20	15	10
K3KG	1,464,300	41/33	165/53	343/64	884/81	172/53	22/16
K1YR	1,431,102	34/25	364/53	413/63	857/85	57/38	160/10
N3AD	1,283,130	33/24	204/59	466/64	867/83	36/27	8/6
K8AZ	1,144,746	26/20	210/58	310/61	843/77	55/31	18/14
KY1H	1,129,464	31/25	275/53	255/62	910/76	34/30	3/3

### Two Transmitter

NR5M	2,598,114	25/20	173/55	722/79	1192/94	348/76	43/22
N3RG	2,574,000	54/34	527/65	680/79	1207/90	112/54	20/8
N3RS	2,535,456	48/34	429/70	617/80	1155/96	126/58	26/14
K2TR	2,191,140	87/41	290/58	527/76	1209/93	86/47	21/14
KS8S	1,715,112	42/31	299/73	321/73	897/90	81/52	13/9

### Unlimited

W3LPL	3,418,959	86/40	597/74	887/86	1237/98	160/60	40/21
W3GM	1,870,914	54/37	374/64	469/69	895/88	96/51	25/17
K3OO	1,459,785	41/33	413/70	242/71	728/76	95/57	16/10

## Top DX Multioperator Scores—Phone

### Single Transmitter

Call	Score	160	80	40	20	15	10
NP4CC	6,863,148	359/53	866/57	1190/57	2538/58	2284/56	119/30
PJ9J	6,675,840	342/49	1180/57	786/56	1882/58	2100/56	664/44
VP2MU	6,421,869	154/35	1345/57	1019/57	1973/58	2749/55	167/27
PJ0B	4,893,660	N/A	N/A	N/A	N/A	N/A	N/A
XE2EBE	4,045,734	406/51	914/55	481/53	1963/55	1013/53	74/11

### Two Transmitter

K2SS/VP2V	8,912,835	371/49	1601/57	1923/58	2603/58	3318/56	255/17
JA1YWX	705,750	0/0	167/16	262/29	967/57	486/23	0/0
JA7YFB	611,433	0/0	172/19	294/30	818/56	373/18	0/0
JA7YAA	423,576	0/0	174/19	234/17	700/54	224/16	0/0
JG1ZKO	218,139	0/0	27/8	117/15	461/50	152/16	0/0

### Unlimited

VP9AD	6,483,720	445/47	1636/56	1013/56	3563/58	936/53	17/14
KH6XX	6,062,463	289/50	763/55	1761/58	1952/57	1695/53	438/20
I3MAU	889,371	22/15	320/39	93/23	1794/56	0/0	0/0
JA2YKA	809,580	0/0	170/22	251/26	1034/58	605/25	0/0
JA9YBA	471,096	0/0	89/16	207/22	948/55	210/15	0/0

## Top DX Multioperator Scores—CW

### Single Transmitter

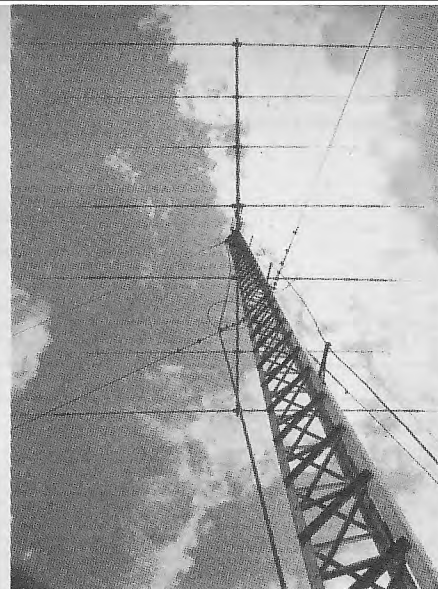
Call	Score	160	80	40	20	15	10
ZF2KE	4,509,960	341/52	805/54	1138/56	1417/58	1285/57	110/18
K5NA/KP2	4,065,984	251/48	697/54	1076/55	903/56	1143/55	274/44
J6CQ	3,520,803	155/38	522/52	1136/55	830/53	1334/55	17/30
XE2EBE	1,862,518	83/38	446/48	595/53	595/56	506/43	7/4
AH6AZ	1,062,465	1/1	106/33	261/46	714/54	709/51	44/8

### Two Transmitter

XE2FU	5,546,205	416/34	878/55	1536/57	1853/58	1007/58	179/33
GB4DX	1,193,808	23/15	521/42	398/40	1265/58	54/21	0/0
JA7YAA	670,599	0/0	186/35	424/40	619/53	234/25	0/0
JA7YFB	585,888	0/0	123/19	432/36	649/52	232/29	0/0
OH1AF	165,048	1/1	37/14	89/23	464/50	7/4	0/0

### Unlimited

KH6XX	4,275,177	207/45	547/49	1264/56	1384/58	1376/55	154/26
4N2E	1,544,400	83/28	430/44	704/49	1278/56	79/23	0/0
LZ1KWF	296,571	0/0	120/24	151/29	522/53	27/15	0/0



An interesting view of the tribander that Mike, K3UOC at 4M4A, used on both modes.

points to outdistance runner-up Mad River Radio Club by 4 million points. The Local Category was the closest race with the top four within 1.8 megs of each other. Last year's champs, The Overlook Mountain ARC, scored 4.1 million points to reclaim the gavel by edging out The Texas DX Society by only 400k.

There are a few changes in the Club Competition rules for next year. So, make sure you and your club check the rules for 1988 before making plans for Club Competition after Jan 1, 1988. Also, make sure your club sends in a list of eligible members to compete in the contest for your club and your ARRL Club Affiliation is up to date. See everyone again in 1988!

## SOAPBOX

### W/VE Phone

Thanks again for a fun weekend. CU next year (AI3E). Wild, wild weekend on 10-meter phone! Biggest thrill was a band opening! (K1UO). Conditions not so hot—no propagation into Far East, Pacific and most of Russia (W1VY). Seventy-five-meter QRP is a lot of fun (AA2U). A 75-degree day outside in early March and no propagation inside the shack—what a bummer! (WA2QNW). Who scheduled this thing while it was 75 degrees outside in March in New Jersey? (N4BNC). After a great amount of years, I got back into DXing. Enjoyed the contest in spite of low number of hours active (W9LSD). I thought conditions were poor for the CW weekend, but these were the worst ever! (W3VT). Tower and beam blew down in a wind-storm during the night. I ended up putting up a multi-band doublet with high SWR and then the amplifier went out—a very sad weekend (W4YN). I did not even hear any Europe (W4AY). Happiness is... with all the whole US and Canada calling, being answered by TR8SA on the very first call (W4RKV). Had a lot of fun and I look forward to next year with better antennas and more power (WA5VAL). Worst general conditions I have ever seen for a contest; however BY1 on 75 meters made up for the lack of activity (WM5K). Just think of the fun we are going to have when the sunspots return! (KA5PVB). I would like to thank all the DX stations who had the patience to listen for my 5-watt signal (W1SW). Thanks for a good time! (W5KA). Thanks for a nice contest, I enjoyed it (W7FP). Noisy the first night, quiet the second. I worked all the DX I heard except P29PR (K7IDX). Too bad the band foiled Sunday—Lots of fun Saturday! (KE7C). The one that really threw me was LU2DVI "Hotel." I didn't know if it was a phonetic "H" or if he was operating from a hotel! (N8BC). A very good contest. The DX stations





## Top DX Single-Band Scores—Phone

<b>160</b>		<b>20</b>	
CT1AOZ	19,722	KK9A/VP2V	614,916
YU2TW	8,148	HC1HC	434,652
IV3PRK	2,820	AL7CQ	334,428
<b>80</b>		I4JMY	325,728
CU2AK	121,176	CT1BOP	276,210
EA7EL	71,070	K6GSS/KH6	265,050
YV3BKC	66,096	YU3EO	255,954
ZL2AFY	39,456	I1ZEU	227,976
ZL1AAS	37,008	IO1EEW	
YU2CCY	26,826	(I1EEW, op)	209,670
JM1BPP	16,686	IOJBL	204,003
F6BDN	9,570	<b>15</b>	
RO4OA	2,652	PY5IW	509,544
RB5DX	2,256	HC1OT	485,469
<b>40</b>		LU2E	
9Y4AA	364,008	(LU8DPM, op)	386,568
IO7DX	95,739	K5KG/LU	378,252
LU4D	62,646	HK3MAE	313,785
JA2BAY	44,415	NP4TB	258,876
4N4L		CX2AAL	239,064
(YU4OO, op)	34,524	HK3JH	224,694
CT3DL	17,340	K2KTT/PJ7	219,102
JH1AEP	14,280	CE4FX	202,725
JA0UMV	8,316	<b>10</b>	
I4EWH	7,644	LU1E	
VK2EKY	5,394	(LU3AJW, op)	231,348
		TI2CCC	145,935
		LU5UL	94,374
		LU1UAI	16,533

## Top DX Single-Band Scores—CW

<b>160</b>		<b>20</b>	
K8WW/VP9	87,363	LU8DQ	293,538
YV1OB	61,884	YU3EO	215,412
FG/W2KN	10,098	I3JSS	205,296
CT1AOZ	7,020	I1XPQ	201,096
G3XWZ/A	6,930	AL7CQ	169,974
YU2TW	6,408	YT3T	
JF1NZW	192	(YU3BQ, op)	157,410
RA3DX	168	4N2V	156,492
UQ2GFB	75	YU1DX	139,878
JE1SPY	42	UA1ZO	131,040
<b>80</b>		LU5UL	127,512
EA8RL	106,950	<b>15</b>	
CU2AK	95,550	HK1KYR	175,770
OK3YX	56,244	YV5IWT	141,426
4N1W		9J2EZ	67,584
(YU1SV, op)	44,088	KH6WT	28,167
HA3MY	43,440	VK4XA	28,044
SP2JKC/3	29,484	JA9RPU	19,350
EA3AQS	28,728	WD5BJT/KP4	8,100
OK2BFN	21,522	YC3HCM	4,416
FF6LCT		J13GAB/3	4,140
(F6HLC, op)	16,632	JA6YCU	
RO4OA	14,790	(JE6UWK, op)	3,636
<b>40</b>		<b>10</b>	
KP4FI	353,115	HK3MAE	2,052
IOJX	203,115	JE1SLP	6
CX8BBH	141,426		
4N4L			
(YU4OO, op)	119,217		
YW7A			
(YV7QP, op)	105,924		
F6ARC	89,535		
JA7HMZ	83,202		
JA9NFO	82,767		
HA9RE	67,536		
XE2AHQ	66,621		

## DX Continental Winners—Phone

Single Operator	Africa	Asia	Europe	North America	Oceania	South America
All Band	EA9IE	UW0MF	OK1RI	V31CV	WR6R/KH6	4M4A
160	—	—	CT1AOZ	—	—	—
80	—	JM1BPP	CU2AK	—	ZL2AFY	YV3BKC
40	CT3DL	JA2BAY	IO7DX	—	VK2EKY	9Y4AA
20	TR8SA	JH7LRS	I4JMY	KK9A/VP2V	K6GSS/KH6	HC1HC
15	—	JR7QKR	CU2CE	NP4TB	VK9NT/2	PY5IW
10	—	—	—	TI2CCC	—	LU1E (LU3AJW)
QRP	—	JA2JSF	FD1BEG	—	VK4UR	YX3A
Multioperator						
Single TX	—	JE2YRD	I5NPH	NP4CC	N1EE/KH6	PJ9J
Two TX	—	JA1YWX	FF6LCT	K2SS/VP2V	—	—
Unlimited	—	JA2YKA	I3MAU	VP9AD	KH6XX	—

## DX Continental Winners—CW

Single Operator	Africa	Asia	Europe	North America	Oceania	South America
All Band	EA8RCT	JE2YRD	OK1ALW	NP4A (NP4Z)	VK9LT	P40GD (W2GD)
160	—	JF1NZW	CT1AOZ	K8WW/VP9	—	YV1OB
80	EA8RL	UA0ZCQ	CU2AK	—	—	—
40	—	JA7HMZ	IOJX	KP4FI	AH6EK	CX8BBH
20	EA8BCJ	JA3YCK (JH4RHF)	YU3EO	AL7CQ	F05JP	LU8DQ
15	9J2EZ	JA9RPU	EA7AZA	WD5BJT/KP4	KH6WT	HK1KYR
10	—	JE1SLP	—	—	—	HK3MAE
QRP	EA8BIE	4X6IF	PA0ADT	—	VK5AGX	YX3A
Multioperator						
Single TX	ZS1CT	JA1YWX	DF0RK	ZF2KE	AH6AZ	—
Two TX	—	JA7YAA	GB4DX	XE2FU	—	—
Unlimited	—	JA9YBA	4N2E	—	—	KH6XX

## W/VE Low Power Top Ten (< 150 W)

Phone	CW
W2TZ	259,182
K8NZ	237,096
N5AW	228,726
WB3FYL	174,096
KA2AJT	150,837
KQ9L	133,386
W0GOR	124,089
W7YAK	119,280
KB3YJ	117,306
WD6EKO	99,144
VO1MP	618,000
N0DH	435,969
W2TZ	371,742
N5AW	315,468
W6JTI	225,924
VE1DH	178,416
KR8Y	163,170
WA1FCN	161,640
K9UIY	157,950
K9ALP	151,200

## W/VE QRP Top Ten

Phone	CW
K3WS	152,055
KD6PY	92,295
N6OJ	79,230
KB7VD	59,013
WA8AGH	38,376
AD7U	31,842
W6VVK	26,235
N6CQA	22,470
KH6CP/1	8,505
WA7TUX	7,668
NN4Q	112,791
W8VSK	81,753
K1CGJ	72,765
KD6PY	58,032
KW6O	54,900
N1AFC	52,437
K4JM	51,273
W8IQ	42,612
WB2ENW	41,850
AC8W	36,738

## Top DX QRP Scores—Phone

Call	Score	Call	Score
YX3A	86,142	FD1BEG	4,896
YV2NY	70,560	JH7XGN	2,520
VK4UR	52,182	EA6SK	1,332
JA2JSF	27,219	PA3DWA	540
4X6IF	5,382	JR8UKI	306

## Top DX QRP Scores—CW

Call	Score	Call	Score
YX3A	561,120	OK1DZD	11,136
EA8BIE	72,891	YU1LM	10,170
4X6IF	26,085	JA6GCE	8,640
PA0ADT	13,176	IS0LYN	7,533
SP5CJQ	11,877	G3XWZ/A	6,930

one (W0KEA). I never thought I would enjoy contesting. Twenty meters was blood and guts, scratch and claw...but I loved it! (KD0EE). Contest provides a nice edge toward the DXCC Golden Jubilee Award—86 countries by the end of the contest! (VE3NBE).

## DX CW

I enjoyed the contest, the first one made with this temporary call in the Ivory Coast (TU4CG). Dead



Takeo, JR1GSE, was there in the JA pileups on phone.

in southern USA (N4IN). I enjoyed the contest. See you again next year! (W5FO). Sunspot minimum—a logical time for monoband fifteen-meter effort; complete with fast-paced 10 QSO/hour average (K1ZX). I really enjoyed the contest and I hope to be in more (W5SUV). Wait until the sunspots change! (W5MW). Having missed winning the 10m CW plaque by 3 QSOs last year, I decided to make an all-out effort this year. Hopefully, not many other stations put forth 2 days to work only 51 stations! (K9LA/5). Lousy conditions (W6AE). Had high noise level, locally, which made the low bands difficult (W6BYH). Great fun! Conditions only fair, but still worked some new ones. Some openings on 10 helped, but you had to be quick to find them (N7HJM). First time in years I spent a few hours working the contest and I enjoyed it (K6RN). QSO points scarce—JA's made my weekend (W7KZK). I am getting the "DX" fever and hope in the next few years to operate from some exotic land! (W7DRA). Had a lot of fun. Wish I was a better op. Oh, well, next year! (NR8Y). Many countries missing. Conditions fair only (W8YGR). Biggest moment—working VU4APR on 40 meters for a new



Carl, 6Y5V's operator, Al6V, finished third in the phone contest.

## Overall Division Leaders

Phone	Division	CW
VO1SA	Canada	VO1MP
KT3M	Atlantic	AA1K
W9RE	Central	W9RE
KC0CU	Dakota	K0SR
W4XJ	Delta	W4XJ
K8AZ	Great Lakes	W8UA
K1ZM	Hudson	N2LT
K4VX/0 (KM9P)	Midwest	W0WP
K1AR	New England	KM1H (KQ2M)
NN7L	Northwestern	NN7L
K16CG	Pacific	W6JTI
KE9A	Roanoke	W3VT
N2IC/0	Rocky Mountain	K0RF
W24F	Southeastern	WX4G
KM6B	Southwestern	K6NA
N5JB	West Gulf	N5RZ

## Low-Power Division Leaders (<150 W)

Phone	Division	CW
VO2WL (VO2AM)	Canada	VO1MP
W2TZ	Atlantic	W2TZ
KQ9L	Central	K9UIY
AC0W	Dakota	KA0OMX
K4JHT	Delta	K40AQ
K8NZ	Great Lakes	KR8Y
K3FNV	Hudson	W2HLI
WB0YJT	Midwest	AK0M
W1KRS	New England	WA1FCN
W7YAQ	Northwestern	W7YAQ
WD6EKO	Pacific	W6JTI
W8WVM	Roanoke	WA4WKY
W0GOR	Rocky Mountain	NC50
N4JF	Southeastern	N0DH
W6CN	Southwestern	NG7S
N5AW	West Gulf	N5AW

## QRP Division Leaders

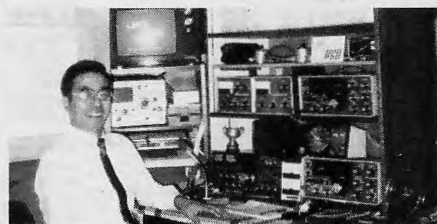
Phone	Division	CW
—	Canada	VE1NH
K3WS	Atlantic	WB2YOF
AD7U	Central	K9EIJ
—	Dakota	—
WA8AGH	Delta	NU4B
AA2U	Great Lakes	W8VSK
WA0LHK	Hudson	WB2ENW
KH6CP/1	Midwest	K0GT
KB7VD	New England	K1CGJ
KD6PY	Northwestern	K7SS
—	Pacific	KD6PY
—	Roanoke	NN4Q
WA7TUX	Rocky Mountain	K7UP
KB4GID	Southeastern	KB4GID
—	Southwestern	KW6O
W15W	West Gulf	WA9FWO

band conditions from 0600 to 1300 daily greatly reduced the score (9Q5NW). Conditions were poor (HZ1HZ). I enjoyed this contest very much! I will enjoy every year as long as possible (JA2UOT). I had a very good time during the contest. I'd like to participate in the contest and work more stations next year (JH4UYB). Took part from JD1 last year, but this year from Japan. Better conditions from JA on 21 MHz than last year! (JMILRQ). First time I tried my new indoor antenna on 20 meters. Was very surprised how it worked. A very enjoyable contest. See you in the next! (DL1MAY). Nice contest. I hope to work it again in 1988 (EA7AAW). Great Fun! (FD1JTL). Conditions can only get better next time (OH7RS). Thanks for a nice contest (OH6CD). I enjoyed the contest very much (ON6LO). Nice to work so many Ws, especially at 3.5 MHz (PA3BNT). Thanks for a very nice contest (PA3ACC). Not so much time to enjoy the whole contest, but still worth to join it for a few (PA3DUA). Good sportsmanship, gentleman-like, and a friendly contest! (PA0GG). Aurora spoiled the conditions and only those with BIG antennas

heard me (SM1CNS). In the first night propagation was not good. Why so few stations from W5 and W0 lands? (SP2JKC/3).

### DX Phone

TVI in my neighbor's VCR did not let me work all



JA1ASO at the operating position of his neat shack.

the time I planned to (ED4DPK). No propagation in 21 and 28 MHz (EA6SK). Very pleased to be back in the contest after a 10-year break! Hope to be better next year, with a complete antenna! (F6BDN). It was a great experience and I learned a lot (G4ZXC). Calling CQ and calling CQ contest for hours and just got two short openings! (IV3PRK). Thanks for the contest. The conditions were strange. I heard almost every station 59, but they couldn't hear me! (OH3GD). Nice contest. Hope to see you next year (PA3EOB). Good contest (PA3DWA). Thanks for a nice contest, but the aurora disturbed the working (SM3COL). Not so funny. Too much QRM/QRN, but will enjoy the test again next year (SM7TV).

### Feedback

Please note the following correction to 1986 October QST results:

On CW, KJ3L was listed as an all-band entry; he should have been single-band 40.

## Scores

The scores are listed by mode—phone and CW. For both WVE and DX scores, single operators are listed first, followed by multioperator single-transmitter, multioperator two-transmitter, then multioperator unlimited. WVE single transmitter scores are broken down by call area and ARRL Section. WVE multi-single scores are broken down by call area only. All WVE multiop two-transmitter and unlimited scores are grouped together in descending order by score. DX single-op and multiop scores are broken down by continent and country. Under each ARRL Section (and country for DX), single-op scores are listed in descending order by category. All-band scores are listed first, followed by 160, 80, 40, 20, 15, and 10-meter single-band scores. Each line score lists the following information: call, score, QSOs, multipliers, power output used (A = 5 W or less; B = 6-150 W; C = more than 150 W). The first station in each category (other than all-band) has a designator following the power indicator. Single-band entries are indicated by 160, 80, 40, 20, 15 and 10. For example, in Connecticut, the top all-band phone scorer is ND1X. The top low-power (150 W or less) entrant is KB1WR. KB1H has the top 40-meter single-band score, K1RU has the top 20-meter single-band score, and K1RM has the top 15-meter single-band score. KH6CP/1 has the top QRP score.

### WVE Phone

1

#### Connecticut

ND1X	468,585	801-195-C
W1QK	350,760	790-148-C
K1WA	259,290	430-201-C
K1IN	121,125	323-125-C
WA1LVW	71,640	199-120-C
K1EM	42,240	160-88-C
K1BV	39,960	222-60-C
W1DO	30,000	100-100-C
KH6CP/1	8,505	63-45-A
N1CC	8,496	59-48-C
KB1WR	6,384	56-38-B
K1RX	3,024	42-24-C
W1BWS	2,175	29-25-C
AA2Z	1,920	32-20-C
KB1H	8,547	77-37-C-40
K1RU	515,040	1480-116-C-20
K1EFI	53,760	256-70-C-20
K1YXG	43,860	215-68-C-20
AB1U	4,116	49-28-C-20
K1BNO	2,232	31-24-C-20
KB1XD	864	18-16-B-20
K1RM	39,321	257-51-C-15

#### Eastern Massachusetts

K5ZD/1	824,460	1057-260-C
K1VR	707,400	1048-225-C
N1AU	252,624	554-152-C
A13E	123,540	290-142-C

W1FJ	112,548	332-113-C
K1CLN	98,553	247-133-C
W1GHI	93,318	302-103-C
NB1B	64,233	183-117-C
K1HBM	47,700	159-100-C
KA1DWH	40,545	159-85-C
WB1GEX	17,160	110-52-B
KA1MI	7,830	58-45-B
W1VF	7,011	57-41-C
KC1BC	4,992	52-32-B
W1PLJ	3,741	43-29-B
KT1O	2,520	30-28-B
AB1A	5,883	53-37-C-160
K8PO	13,662	99-46-C-40
W1KRS	42,900	220-65-B-20

#### Maine

W1MGP	4,680	40-39-B
K1UO	1,260	30-14-C-10

#### New Hampshire

K1AR	1,584,375	1625-325-C
K1DG	720,114	934-257-C
W2IOL	33,654	142-79-B
KA1LMR	18,648	84-74-B
AK1A	453,675	1315-115-C-20
W1VY	24,426	118-69-C-20
KE1E	12,084	106-38-B-20
W2UP	11,466	91-42-B-20

#### Rhode Island

K1VJS	239,598	459-174-C
K1IU	97,383	227-143-C

W1RFQ	3,999	43-31-B
N1EIA	36	4-3-B
<b>Vermont</b>		
KD2EN/1	69,165	265-87-C
W1KQ	37,587	187-67-C
W3SOH	25,530	115-74-B
K1HKI	2,808	36-26-C-80
K1IK	12,420	90-46-C-40

#### Western Massachusetts

KC1F	1,492,542	1758-283-C
KZ1M	1,350	30-15-B

2

#### Eastern New York

K1ZM	1,462,860	1548-315-C
KY2J	492,228	726-226-C
N2AIF	86,394	238-121-C
W2KHQ	37,884	164-77-B
WA3AFS	26,964	107-84-C
K2IBW	124,425	525-79-C-20
KC2QF	6,930	70-33-C-15

#### NYC-Long Island

WA2LQO	172,326	373-154-C
KD2TT	134,820	321-140-C
NS2W	12,045	73-55-B
N2KA	11,076	71-52-C
W2GGE	6,588	61-36-C
K2RYI	4,284	51-28-B
W2GKZ	2,730	35-26-C

N2GYN	2,640	40-22-B
K2RGI	36	4-3-B-80
K2MFY	47,196	228-69-B-20
WA2OVG	5,250	50-35-C-20
AC2P	2,520	35-24-C-20
WB2AMU	1,767	31-19-B-15
N2GXY	231	11-7-B-15
KE2N	462	22-7-C-10

#### North New Jersey

N2LT	1,070,118	1341-266-C
W1GD	206,190	395-174-C
K3FNW	62,370	198-105-B
W2PHW	45,108	179-84-C
WB2HJW	32,190	145-74-C
W9NTU	16,500	100-55-B
WA2UDT	12,012	91-44-B
KD2RC	11,592	84-46-B
KY2D	11,520	80-48-B
AA2U	5,406	53-34-A
WA2ASQ	4,998	49-34-B
W2FCR	3,840	40-32-C-160
N3AHF	10,209	83-41-C-80
K2DM	24,024	143-56-C-20
KA2YCV	3,375	45-25-B-40
KY2P	108	9-4-B-20
WA2QNW	31,785	163-65-C-15
K4BNC	7,227	73-33-C-15
K2PF	3,243	47-23-C-15

#### Southern New Jersey

N2MM	766,422	1026-249-C
N2RM	232,965	501-155-C

K2FL	183,762	369-166-C
N2VW	112,518	266-141-C
K2OWE	106,272	288-123-C
W2PAU	89,310	229-130-C
W2FGY	51,360	214-80-C
K2OSV	35,520	148-80-C
K2LOO	9,360	65-48-B
W2EA	2,664	37-24-B
KA2KFO	960	20-16-B
K8XR	27,360	160-57-C-40
WA2VYA	27	3-3-B-40
K2PS	17,700	118-50-B-20
W2GTN	900	20-15-B-15

<b>Western New York</b>		
W2TZ	259,182	462-187-B
WB2ABD	150,936	331-152-C
KA2AJT	150,837	367-137-B
W2FXA	130,698	318-137-C
W2FUI	31,616	154-68-C
K2SE	31,050	138-75-C
KK2B	16,380	91-60-B
W2FR	6,336	48-44-C
W2OMV	1,173	23-17-B
WB2TKD	8,550	75-38-B-20

3

#### Delaware

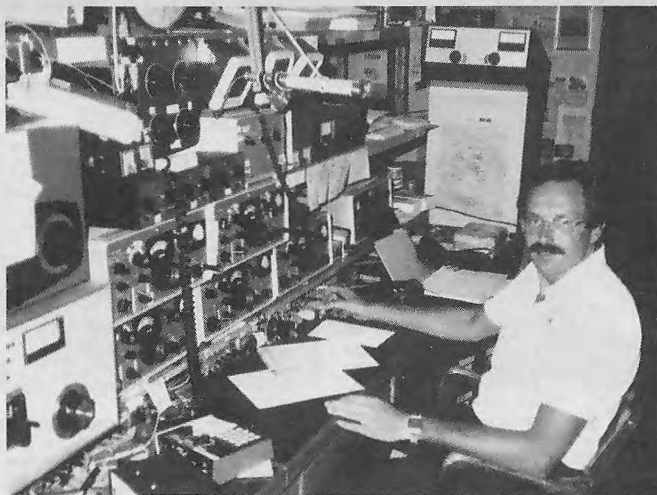
W3XU	618,975	917-225-C
W3NX	146,349	303-161-C



<b>Eastern Pennsylvania</b>			<b>Southern Florida</b>			<b>N5JJ</b>			<b>KV6H</b>			<b>W8CGG</b>		
KT3M	1,301,724	1418-306-C	K8UNP	222,075	423-175-C	W5RJA	45,144	171- 88-C	K6DR	195,576	562-116-C	W8BEE	9,045	67- 45-C
WB3GN	1,235,874	1406-293-C	WK4F	51,912	168-103-C	W5KCR	23,580	131- 60-C	N6JM	134,784	384-117-C	K8MR	6,156	54- 38-B
WB3CAC	323,910	610-177-C	KA4UBC	25,668	138- 62-C	W5XD	18,984	113- 56-B	W6RZ	92,886	274-113-B	W8RHY	4,650	50- 31-C
KQ3V	210,528	408-172-C	N1EAF/4	2,457	39- 21-C	W5HFR	6,480	54- 40-B	N6GG	18,866	122- 51-B	NG8T	3,627	39- 31-B
KQ3F	178,200	440-135-C	W1UDB/4	1,368	24- 19-C	W5PWG	2,700	36- 25-C -40	N6BG	4,416	46- 32-C	KN8AT	3,564	36- 33-C
WB3FYL	174,096	403-144-B	K4XS	226,368	786- 96-C -20	W5SSJD	120	10- 4-C -20	<b>7</b>			KN8AT	3,600	40- 30-C-160
KA3DSW	150,480	330-152-C	KF4MA	9,945	85- 39-B -20	W5AC (WQ5C, op)	27,270	202- 45-C -15	<b>Arizona</b>			KW8N	17,820	110- 54-C -80
KB3JV	117,306	294-133-C	HK3GZB/W4	8,541	73- 39-C -20	KN5H	90	6- 5-C -15	KC7V	541,833	1009-179-C	K8BPQ	2,997	37- 27-C -80
W3KV	105,903	287-123-C	W4YN	4,002	46- 29-C -20	KE5FI	22,680	189- 40-C -10	KC7CE	30,609	179- 57-B	N8EKS	960	20- 16-C -40
W9NFX	96,558	266-121-C	W2SDB/4	420	14- 10-C -20	<b>West Texas</b>			K9JNE	12,543	113- 37-B	WB8JBM (N8DCJ, op)	490,776	1352-121-C -20
WB3CIW	93,666	233-134-C	NT2Q	8,316	84- 33-C -15	WFSE	21,384	132- 54-C -20	W7YR	9,504	66- 48-C	N8BC	6,210	69- 30-C -15
K3IPK	87,000	232-125-C	WA4BWI	1,242	23- 18-B -15	WB5UDX	42,582	302- 47-C -15	WB7FDD	2,016	32- 21-B-160	WDBAJF	1,953	31- 21-B -15
W3DHM	73,220	214-110-C	N4EJW (N4EJV, op)	12,288	128- 32-C -10	<b>6</b>			K7SP	1,326	26- 17-C-160	WDBKTM	126	7- 6-B -15
AD3Z	67,932	306- 74-C	<b>Tennessee</b>			<b>East Bay</b>			W7AYV	23,754	214- 37-C -15	<b>West Virginia</b>		
KA3NJA	65,520	210-104-B	KC3Z	113,577	289-131-C	<b>Los Angeles</b>			WA7KLLK	6,006	77- 26-C -10	W8WVM	36,975	145- 85-B
N3HW	63,936	222- 96-C	K4JHT	77,490	246-105-B	K6SIK	174,582	366-159-C	W7LVU	60	5- 4-B -10	W8VEN	29,835	117- 85-C
W3ARK	54,684	217- 84-B	W4ZHW	33,288	152- 73-C	W6EG	17,160	104- 55-C	<b>Idaho</b>			KN8D	180	12- 5-B -10
W3YFV	36,936	152- 81-C	K4PR	5,700	50- 38-C	KS6Q	1,350	30- 15-C -20	KAT7	104,895	333-105-C	<b>9</b>		
K3ZLK	36,720	144- 85-B	N4BSN	3,876	38- 34-C	<b>East Bay</b>			K6RN	95,469	263-121-C	<b>Illinois</b>		
W3EVW	28,296	131- 72-C	W4AY	561	17- 11-B	KM6B	1,111,560	1570-236-C	N7HJM	13,572	116- 39-B	K9BQL	99,180	285-116-C
W3AOH	18,921	119- 53-C	K4RIG	31,980	164- 65-C -40	KEID	384,930	705-182-C	N7GUC	9,636	73- 44-B	KC9UM	62,700	190-110-C
K3TX	17,346	98- 59-C	W4XJ	223,200	775- 96-C -20	KB5AS/6	335,250	894-125-C	<b>Montana</b>			WD9GIG	50,343	173- 97-C
W3OV	15,138	87- 58-B	W4RKB	23,214	146- 53-C -20	N6VI	322,452	686-156-C	K7LTV	193,362	481-134-C	W9LYN	47,040	160- 98-B
K3DYX	9,102	74- 41-C	KA4FB	480	16- 10-B -20	N6DKP	223,665	481-155-C	K7TV	106,800	356-100-C	AG9E	26,730	135- 66-B
N3CIX	8,541	73- 39-B	KE4HX	20,880	145- 48-C -15	KY9RA	209,880	424-165-C	K7ABV	2,376	36- 22-C -80	W9ZGP	21,582	109- 66-B
KC3ZG	4,752	48- 33-B	N4TG	14,268	116- 41-C -15	W6ABW	132,300	350-126-C	<b>Nevada</b>			KD9RD	18,792	108- 58-B
KA3LCF	2,997	37- 27-B	<b>Virginia</b>			NEAW	113,088	496- 76-C	WA7UTM	76,590	222-115-C	K9JZ	17,700	100- 59-C
N6CQ/3	2,376	33- 24-C	KE9A	673,014	1006-223-C	NE6I	110,700	300-123-C	W7UJW	19,824	118- 56-C	KG9E	8,712	66- 44-B
KA3HQA	1,512	24- 21-B	NK4J	349,338	737-158-C	K8BHW	100,386	286-117-C	WB7VVH	12,900	100- 43-C	N9DOV	5,904	48- 41-B
K3ND	6,930	55- 42-C -80	N4RA	241,983	501-161-C	W6CN	94,500	300-105-B	<b>Oregon</b>			K9JQ	5,880	56- 35-C
K3ZPG	12,660	90- 48-C -20	N4MM	98,670	253-130-C	K6EV	84,216	242-116-C	K5MM/7	704,790	1146-205-C	W9REC	1,056	22- 16-B
WB3EPW	7,140	68- 35-C -20	N4XD	84,960	240-118-C	N6AA	65,286	234- 93-C	K5NP7	179,142	409-146-C	WB9HAD	12,126	86- 47-C-160
WB3FWA	7,719	63- 31-B -15	W4WJJ	76,908	221-116-C	K6RQ	44,074	226- 65-C	W7YAZ	119,280	355-112-C	W9CH	17,442	114- 51-C -40
<b>Maryland-DC</b>			W4JVN	12,960	80- 54-C	K6GAR	41,472	192- 72-C	W7ZR	93,732	292-107-C	KR9G	6,222	61- 34-C -40
K3ZJ	512,736	784-218-C	K4ARLW	12,012	77- 52-B	W6FCF	37,635	193- 65-C	K7GUR	59,120	256- 90-C	KA9TNZ	73,125	325- 75-C -20
W3UJ	186,030	477-130-C	N3JT	10,443	59- 59-C	W6SV	28,366	166- 57-B	KA7EQS	65,596	226- 82-C	NQ9M	5,952	62- 32-C -20
K3WS	152,055	327-155-A	W4VC	5,967	51- 39-B	WA6POZ	26,703	129- 69-C	W7AHZ	6,896	93- 24-C	<b>Indiana</b>		
N3II	93,990	241-130-C	WB6NFT	2,448	34- 24-C	N6IBP	24,552	132- 62-B	W7FP	115,866	471- 82-C -20	W9RE	1,227,963	1397-293-C
K3AV	38,340	142- 90-C	N9LT/4	2,250	30- 25-B	W6REH	12,876	74- 58-B	W7CGR	6,960	80- 29-C -20	W9NPM	129,168	299-146-C
W3JPT	23,730	130- 61-B	N3RC	2,016	28- 24-B	K6P	11,115	65- 57-C	KA7FEF	3	1- 1-B -10	K9JS	64,890	206-105-C
WA3LP	21,735	105- 69-C	K4ME	1,482	26- 19-B	KD8LV	8,910	55- 54-C	<b>Utah</b>			AD7U	31,842	122- 87-A
W3FOE	2,508	38- 22-C -80	N4LZJ	48	4- 4-B -80	K6ICS	7,560	70- 36-B	W7HNS	91,266	287-106-C	W9PC	25,620	122- 70-C
W3GN	1,008	24- 14-C	W4KMS	3,870	43- 30-C -40	W6OES	4,464	48- 31-C	KE7KF	88,500	295-100-C	KBAC	2,160	30- 24-C -80
W6AXX	2,448	34- 24-C -80	W3YY	223,344	752- 99-C -20	NK6A	4,350	58- 25-B	NT7Y	64,728	232- 93-C	<b>Wisconsin</b>		
W3HVQ	4,089	47- 29-C -40	W4YE	22,572	132- 57-C -20	NY6Y	3,312	48- 23-B	KE7NS	43,056	276- 52-B	K9CAN	242,379	423-191-C
W3GG (KA3PGL, op)	91,482	386- 79-C -20	N4MUJ	20,898	129- 54-B -20	AA6PY	3,042	39- 26-B	KE7QA	14,664	104- 47-C	W9OP	135,864	333-136-C
KZ3B	23,100	140- 55-C -20	K4FPF	2,622	46- 19-B -20	K6GVZ	3,036	46- 22-B	N7HUJ	11,340	90- 42-B	KB9S	88,500	236-125-C
WA3EEE	5,481	63- 29-C -15	K3RV	59,427	279- 71-C -15	W6AQ (WA6OTU, op)	70,875	525- 45-C -40	WA7TUX	7,668	71- 36-A	NG9L	33,288	146- 76-B
W3PWO	1,044	29- 12-C -10	N4JGQ	108	9- 4-C -10	K5KT/6	29,298	257- 38-C -40	<b>Washington</b>			N9C	26,400	110- 80-B
<b>Western Pennsylvania</b>			<b>5</b>			W6OK	30,576	208- 49-C -20	NN7L	721,494	1293-186-C	WB9CXV	16,362	101- 54-C
WB3KOE	16,245	95- 57-C	<b>Arkansas</b>			K6SVL	154,566	831- 62-C -15	N7TCU	57,888	201- 96-C	W9UP	9,324	74- 42-C
N3DHC	3,042	39- 26-C	K5FUV	126,126	286-147-C	K6EVR	16,182	174- 31-C -15	W7QN	42,174	198- 71-C	N4TZ	6,771	61- 37-C
K3UA	3,240	40- 27-C-160	KC5TA	59,388	196-101-C	W6TMD	366,876	774-158-C	NB7N	23,265	165- 47-C	WB9HRO	3,444	41- 28-A
N3FAS	18,495	137- 45-C -20	KA5PGA	36,354	146- 83-C	WJ6C	60,945	239- 85-C	W7IIT	17,802	129- 46-C	KJ9I	3,120	40- 26-C-160
W3FGS	15,312	116- 44-B -20	K5GOE	19,596	92- 71-C	NM6L	15,660	116- 45-C -20	WA7BAY	12,096	84- 48-C	KS9K	14,841	97- 51-C -80
AD8J	2,508	38- 22-C -20	W5EJ	19,404	98- 66-C	K6VI	73,788	473- 52-B -15	K7GEX	11,316	92- 41-C	N9BUS	4,680	52- 30-C -80
<b>4</b>			K5UR	14,310	90- 53-C-160	<b>Orange</b>			K7LYT	1,242	23- 18-C	KQ9L	133,386	517- 86-B -20
<b>Alabama</b>			<b>Louisiana</b>			W6TMD	366,876	774-158-C	K7IDX	3,000	40- 25-C-160	W9GIL	55,692	238- 78-C -20
WZ4F	905,154	1174-257-C	WB5SSA	107,586	258-139-C	WJ6C	60,945	239- 85-C	K7UR	4,836	62- 26-C -80	K9YNF	21,942	138- 53-C -20
N4JF	74,250	225-110-B	KB5GL	42,120	180- 78-C	NM6L	15,660	116- 45-C -20	W7WA	451,572	1244-121-C -20	<b>0</b>		
KE4BM	26,715	137- 65-C	KE5LQ	37,674	138- 91-B	W7CB/6	78,120	280- 93-C	N7TT	309,060	1010-102-C -20	<b>Colorado</b>		
K4MG	16,740	93- 60-C	N5GPP	18,540	103- 60-B	W6UJX	50,844	223- 76-C	W7GVM	103,095	435- 79-C -20	N2IC/0	993,510	1330-249-C
KR4F	192	8- 8-C-160	W5OB	18,444	106- 58-B	N6VR	990	22- 15-C-160	KD7IK	81,396	399- 68-C	K0UK	908,988	1436-211-C
WA4QXH	2,040	34- 20-B -80	W5CD	108	6- 6-B	WA6FGV	10,605	101- 35-C -15	W7LVI	68,541	341- 67-C	W0GOR	124,089	311-133-B
<b>Georgia</b>			W5WMU	29,736	168- 59-C -80	<b>Santa Barbara</b>			K7DS	10,260	95- 36-C -20	W0OSK	95,370	289-110-C
NQ4I	284,931	519-183-C	<b>Mississippi</b>			N6ADI	276,000	575-160-C	W7VIH	630	21- 10-B -20	KB0L	86,352	257-112-C
N4VZ	237,096	444-178-C	W5OSL	3,528	42- 28-C -15	K6JG	113,850	345-110-C	KE7C	62,436	473- 44-C -15	KE0KV	32,970	157- 70-C
W4DXI	138,996	297-156-C	<b>New Mexico</b>			W6UJX	50,844	223- 76-C	<b>Wyoming</b>			NQ8L	14,100	100- 47-B
KX4R	89,775	225-133-C	N5EPA	207,438	449-154-C	N6VR	990	22- 15-C-160	KD7RX	18,564	119- 52-B	N8GKV	6,090	70- 29-B
K4GKV	69,156	228-102-C	K3IL	47,124	238- 66-C	W6FGV	10,605	101- 35-C -15	KB7M	7,659	69- 37-C	NN8M	4,275	75- 19-B
W9KTB/4	67,689	207-109-B	N5ACP	45,594	149-102-C	K6BKV	140,130	346-135-C	NC7O	1,710	30- 19-C	W0VZ	4,896	



Mike, KE3CV at V31CV, didn't have a problem winning first place in the phone contest from this great location.



Jan, N6AW, operates from the W6AM shack.

K10F	6,615-	63-35-C-15
<b>Missouri</b>		
K4VX/0 (KM9P, op)	850,356-	1027-276-C
W0HBH	257,223-	479-179-C
NS0B	76,755-	215-119-C
KM0L	48,900-	163-100-C
KB0V	46,200-	154-100-C
W0PKO	35,298-	159-74-C
W0FF	35,052-	127-92-C
N10G	28,884-	116-83-B
AK0M	2,025-	27-25-B
AJ0E	2,001-	29-23-B
KA0P	120-	8-5-B-20
<b>North Dakota</b>		
KC0CU	57,222-	187-102-C
<b>Nebraska</b>		
K0SCM	89,925-	275-109-C
KV0I	69,090-	245-94-C
W0OLL	11,088-	77-48-B
N8GVK	2,100-	28-25-B
<b>South Dakota</b>		
KLZT	2,268-	42-18-B
N5HCH	9-	3-1-B
K0DD	29,646-	162-61-C-40
W0ACT	6,696-	72-31-C-20
<b>VE</b>		
<b>Maritime-Newfoundland</b>		
VO1MP	367,233-	733-167-C
VE1DH	297,270-	734-135-C
VE1BNN	6,216-	59-37-C-160
VO1SA	643,560-	1730-124-C-20
VE1BDK	109,917-	531-69-C
VO2WL (VO2AM, op)	27,918-	198-47-B-20
<b>Quebec</b>		
VE2AYU	396,990-	802-165-C
<b>Ontario</b>		
VE3XN	118,170-	303-130-C
VE3ST	56,160-	195-96-C
VE3TJL	462-	14-11-B
VE3INU	192-	8-8-B-160
VE3CUI	672-	16-14-C-40
VE3NXQ	23,532-	148-53-B-20
VE3GRA	11,685-	95-41-B-20
VE3NBE	8,118-	66-41-B-20
VE3HX	162-	9-6-C-10
<b>Manitoba</b>		
VE4KE	34,569-	167-69-C
VE4RP	19,557-	123-53-C
<b>Saskatchewan</b>		
VE5FX	40,896-	213-64-C-20
<b>British Columbia</b>		
VE7XO	33,390-	210-53-C
VE7FJE	8,588-	102-28-C-15
<b>Multioperator Single Transmitter</b>		
<b>1</b>		
K1CC (+KG1D,K1DW)	1,215,396-	1378-294-C
K1YR (+K1RX)	956,301-	1103-289-C
K1TO (+K1NYK,K1As PAK,VG)	931,500-	1150-270-C
KM1C (+KB1T,WB88TH)	450,780-	683-220-C
KY1H (+KS1N,KB1W,AK4L)	439,533-	657-223-C
W1RR (+NET)	336,405-	547-205-C

KQ1F (+KA1CI,K1XM)	216,108-	414-174-C
K1KA (+NET)	189,954-	519-122-C
W1YK (KM1P, op, +NET)	138,600-	420-110-C
K1KI (+NET)	14,457-	79-61-C
WA2VST (+KB1WM)	8,514-	68-43-B
<b>2</b>		
WB2ULI (+N2BOW)	1,109,469-	1439-257-C
NR2H (+KU2C,W2GD,KB2HZ,K2NJ)	992,940-	1235-268-C
N2TM (+KC2NB,KY2O,KY2P,NB2P, KB2SY)	814,095-	1185-229-C
W2YV (+KQ2M)	664,704-	1731-128-C
W2VJN (+N2BA)	214,929-	429-167-C
W2XL (+NJ2L,KD2NE,WA2WSO)	195,132-	404-161-C
W2UI (+N3KR)	179,664-	394-152-C
K2BK (+KQ2O)	168,912-	414-136-C
W2OW (NK2H,W2MTA,N12T,NE2W, WB2YWH, ops)	147,804-	436-113-C
W2SZ (NC14,KJ2B,K2LIV,NQ2M, KA2WRG,WA2YH,K2APQA, ops)	86,184-	252-114-C
K2TD (+NET)	50,634-	174-97-C
N2EGR (+KA2QYL)	25,338-	103-82-C
KC2IW (+NET)	19,470-	110-59-C
<b>3</b>		
K3TUP (+N3BJ,KJ3L,K3LR,KB3IZ,A18S)	1,742,004-	1828-318-C
N3RS (+N3RD)	1,399,380-	1405-332-C
K3WW (+K3OX)	886,074-	1022-289-C
NE3F (+KS3F,K3WGR)	548,856-	847-216-C
K3IE (+N3ARIK)	371,739-	629-197-C
N3BNA (+NB3J)	272,796-	508-179-C
KU3T (+KD3AP)	87,780-	266-110-C
K3UEI (+NET)	73,632-	208-118-C
W3KWH (KA3S KSD,LNG,K3S1,N3s QF, QP, ops)	41,310-	162-85-C
NA3K (+NET)	38,250-	150-85-C
W3SK (KA3S BER,DVY,JOI,NTZ,PIT, KC3B, ops)	34,992-	144-81-C
<b>5</b>		
K5RVK (+W5ASP,N5BA,WA9VLJ)	335,778-	586-191-C
<b>6</b>		
W6GO (+NET)	1,006,740-	1410-238-C
W6AE (+W6HX,KR6X)	690,676-	1086-212-C
K6ZM (+K4UVT,NP4WI,NB6L,AK6T)	409,704-	794-172-C
KE6WL (+W6AHN,KD6NT)	317,817-	711-149-C
W6MFC (+N6IC)	282,219-	623-151-C
W6KCB (+NU6L,N6LYX)	238,070-	645-122-C
N6CCL (+NET)	225,666-	597-126-C
W6XM (+NET)	169,893-	439-129-C
W6BSY (+NET)	137,635-	335-127-C
W6ET (+NET)	102,600-	285-120-C
W6RT (+NET)	73,260-	220-111-C
W6AHF (+NET)	70,278-	221-106-C
W6UE (N6DLU,WA6OTU,AA6RX, ops)	66,768-	208-107-C

WA6YNT (KA6ART,WN6CND,N6CTV, K6HRT,N6OUG,WB6OWD, ops)	55,476-	201-92-B
N6JV (+NET)	38,430-	183-70-C
W6DUB (+NET)	18,720-	104-60-C
N6ITY (+NET)	17,980-	110-54-C
W6EKR (+NET)	16,548-	99-84-B
K6LRN (+NET)	15,750-	105-50-B
KD6AZ (+NET)	15,048-	88-57-C
WC6I (+NET)	9,576-	84-38-C
NQ6X (+NET)	8,037-	57-47-C
WB6FDO (+NET)	7,344-	51-48-C
W6BIP (+NET)	5,394-	62-29-C
N6RC (+NET)	1,476-	41-36-C
KZ6Z (+NET)	192-	8-8-C
<b>7</b>		
NK7U (+N17T)	641,946-	1103-194-C
W7MR (+N7IDG,N7IEM)	116,844-	364-107-C
NU7B (+ND7A)	45,990-	210-73-B
<b>8</b>		
K8CC (+N5JUX,N8BTU,KA8PLH, WD8RHO,KN8S,W8UA)	594,000-	792-250-C
KA8ZOK (+KB4QZH)	17,700-	100-59-C
<b>9</b>		
KD9ST (+KA9S SQR,SQS,SQT)	257,346-	493-174-C
<b>0</b>		
N0XA (+NET)	1,067,346-	1182-301-C
W4NIM (+W8WP)	285,825-	515-185-C
K0GAS (+KJGD)	238,944-	524-152-C
KR0B (+NET)	230,010-	451-170-C
<b>VE</b>		
VE4CAT (VE4As AA,CF,GR,HQ,KL,LN, VE4SI, ops)	17,700-	100-59-B
<b>Two Transmitter</b>		
K5RX (+K5MR,KM5X,N5s RZ,TR,KR0Y)	2,811,240-	2280-411-C
K2TR (+K2s RD,XA,WA2SPL,WB2KMY)	9,680-	440-74-C
JF1SEK	94,842-	479-66-B
JA2ODS	39,765-	241-55-C
JA2JSF	27,219-	211-43-A
JA1DFQ	19,596-	142-46-B
JA8SW	18,522-	147-42-C
JA7RXU	15,435-	147-35-C
JA1IUT	15,225-	145-35-B
JA1ASO	14,160-	118-40-B
JA6CGJ	11,136-	116-32-C
JO1XDC	4,680-	78-20-B
JH7XGN	2,520-	60-14-A
JA6AKV	2,244-	44-17-B
JP1TRJ	2,196-	61-12-B
JP1SRG	2,196-	61-12-B
JH6TYD	990-	33-10-C
JH1ZKP	675-	25-9-B
JA2QVP	324-	18-6-C
JR8UKI	306-	17-6-A
JA1BPP	16,686-	206-27-C-80
JA2BAY	44,415-	423-35-C-40
JA1IAP	14,280-	238-20-C-40
JA8UMV	8,316-	154-18-B-40
JA7UMT	4,176-	116-12-C-40
JA1IAF	288-	24-4-B-40
JABYAK (JHBMVU, op)	168-	14-4-B-40
JR8XQJ	126-	14-3-B-40
JA1KFX	6-	2-1-B-40
JH7LRS	109,548-	716-51-B-20
JA7BSJ	95,013-	621-51-C-20
JA7YRR (JA7QM, ops)	52,404-	397-44-C-20

W3LPL (+JL1BLW,K1s DQV,RZ,N3GB, W3SEKT,MR,WA3VUQ,WB3JRU, W6AXX,F8IIR,KC6C)	2,297,061-	2031-377-C
K5NA (+KA2QYL,KC2IW,K2TW,KR2Q, KU2Q,N2s AA,EGR,EK,GUV,LL,NJ2L, WA3AFS)	1,590,177-	1873-283-C
W3GM (+K3s GM,ND,LZ,RL,W3FV, WA3JZ)	1,571,328-	1536-341-C
K3ZZ (+KC3EK,KS3L,KN3P,K3TM, N3AOE,WA3EKL)	862,356-	1034-278-C
K6XO (+N6s BIS,RZ,TU,WA6OCV,WA6QII)	855,738-	1378-207-C
N3LR (KA3s OAW,OMF,POJ,QGN,QNH, KR3W,K3ZA, ops)	554,682-	958-193-C
W2GD (+NET)	278,586-	469-198-C
K4JPD (+N4HOF)	21,060-	108-65-C
<b>DX Phone Single Operator</b>		
<b>Africa</b>		
CT3DL	17,340-	170-34-C-40
EA9IE	2,029,302-	3047-222-B
EA9NN	1,125-	25-15-C-20
TR8SA	63,000-	420-150-C-20
ZS6BRZ	382,365-	879-145-C
ZS8TUK (ZS6PZP, op)	15,222-	118-43-B
JG1FVZ/5N0	29,160-	180-54-C
9Q5NW (N4NW, op)	467,406-	1129-138-C
<b>Asia</b>		
BV2B	23,142-	203-38-C
HL9OB	27,156-	292-31-C
HL1ABR	24-	8-1-B-40
HL9SW	32,352-	337-32-C-20
JH7WQK	406,665-	1291-105-C
JH8WJY	195,858-	806-81-B
JA1YBK (JH0LFE, op)	149,406-	673-74-C
JR1GSE	133,123-	617-73-C
JH4UYB	99,153-	479-69-C
JA7AQR	97,680-	440-74-C
JF1SEK	94,842-	479-66-B
JA2ODS	39,765-	241-55-C
JA2JSF	27,219-	211-43-A
JA1DFQ	19,596-	142-46-B
JA8SW	18,522-	147-42-C
JA7RXU	15,435-	147-35-C
JA1IUT	15,225-	145-35-B
JA1ASO	14,160-	118-40-B
JA6CGJ	11,136-	116-32-C
JO1XDC	4,680-	78-20-B
JH7XGN	2,520-	60-14-A
JA6AKV	2,244-	44-17-B
JP1TRJ	2,196-	61-12-B
JP1SRG	2,196-	61-12-B
JH6TYD	990-	33-10-C
JH1ZKP	675-	25-9-B
JA2QVP	324-	18-6-C
JR8UKI	306-	17-6-A
JA1BPP	16,686-	206-27-C-80
JA2BAY	44,415-	423-35-C-40
JA1IAP	14,280-	238-20-C-40
JA8UMV	8,316-	154-18-B-40
JA7UMT	4,176-	116-12-C-40
JA1IAF	288-	24-4-B-40
JABYAK (JHBMVU, op)	168-	14-4-B-40
JR8XQJ	126-	14-3-B-40
JA1KFX	6-	2-1-B-40
JH7LRS	109,548-	716-51-B-20
JA7BSJ	95,013-	621-51-C-20
JA7YRR (JA7QM, ops)	52,404-	397-44-C-20

JA7HMZ	27,306-	222-41-B-20
JA2BNN	22,914-	201-38-C-20
JA9BEK	17,160-	143-40-B-20
JA4PA	3,300-	55-20-B-20
JA1BBA	1,911-	49-13-B-20
JN1VUB	273-	13-7-B-20
KJ1NSR	3-	1-1-B-20
JR7QKR	45,603-	563-27-B-15
JA9RP	32,544-	452-24-B-15
JAGYCU (JE6UWK, op)	13,158-	258-17-B-15
JA3YDS	8,064-	192-14-B-15
JP1FZA	6,888-	164-14-B-15
JE1AER	4,572-	127-12-B-15
JA1OXC	4,494-	107-14-B-15
JH7NPF	3,330-	111-10-C-15
JH0XUP	3,312-	92-12-C-15
JO1WQC	2,838-	86-11-C-15
JO1XOK	2,220-	74-10-B-15
JA8JUY	2,160-	80-9-B-15
JA5EO	1,800-	60-10-B-15
JO1TMU	1,380-	46-10-B-15
JA1YAG	1,320-	55-8-B-15
JH6VHN	1,287-	39-11-B-15
JA6EFT	1,050-	35-10-C-15
JA3TJZ	480-	20-8-B-15
JA1AAT	432-	18-8-B-15
JA0GZ	216-	18-4-B-15
JA3XTV	135-	9-5-B-15
JA3UWB	120-	10-4-B-15
JA6QDU	90-	10-3-B-15
UW0MF	495,651-	923-179-B
UW0CV	11,778-	151-26-B-20
UA9MA	9,024-	94-32-B-20
UW0CF	7,560-	126-20-B-20
UW0CM	3,417-	67-17-B-20
RV9JUV	2,580-	43-20-B-20
UA0FF	2,244-	68-11-B-15
UG6LU	7,695-	95-27-B-20
RM8MA	378-	21-6-B-20
VS6UP	72-	8-3-B-20
4X6IF	5,382-	78-23-A
Europe		
CT1AOZ	19,722-	173-38-B-160
CT1DJE	3,000-	50-20-B-40
CT1BOP	276,210-	1674-55-B-20
CR7BY	74,382-	506-49-C-20
CT4MS	19,071-	163-39-B-20
CU2AK	12,176-	748-54-C-80
CU2CE	10,773-	133-27-B-15
DL6RAI	46,248-	376-41-C
DJ3JH	159,000-	1000-53-C-20
DA2ER	109,089-	713-61-C-20
DL8UI	34,443-	267-43-C-20
DL5ZBA	11,160-	120-31-C-20
DL5ME	4,968-	69-24-B-20
DL9YCS	4,485-	65-23-C-20
DJ0BX	3,726-	68-18-B-20
DJ9XT	2,016-	42-16-B-20
EA1CIM	140,220-	570-82-C
ED3QD	136,218-	622-73-B
EA7BHO	11,468-	98-39-B
EA1AW	9,594-	82-39-C
EA7EL	71,070-	515-46-C-80
ED4DPL	109,980-	705-52-C-20
EA5DCK	5,796-	84-23-C-20
EA5CXL	5,775-	77-25-C-20
EA7BYM	1,521-	39-13-B-20
EA6SX	43,365-	295-49-C-20
EA6SK	1,332-	37-12-A-20
F8AOJ	518,814-	1406-123-C
F8BDN	9,570-	110-39-C-80
F8DRP	14,016-	146-22-B-20
F8HDI	11,532-	124-31-B-20
FD1HWB	8,505-	105-27-B-20
FD1LBL	7,566-	97-26-B-20
FD1BEG	4,898-	68-24-A-20
F8CLM	231-	11-7-B-20
G2QT	129,291-	607-71-C



GB6AR	22,263	181- 41- C -20	Y41JH	1,755-	45- 13- B -20
G4ZXC	3,969-	63- 21- B -20	Y67TL	1,722-	41- 14- B -20
GJ3ZAY	173,952-	604- 96- C	Y43EO	792-	24- 11- C -20
GW4BLE	580,086-	1742-111- C	Y66YF	315-	15- 7- B -20
HG1S	115,126-	1281- 82- C	Y08KOA	6,630-	85- 26- B -20
HA9RG	307,568-	664- 54- B	Y07SF	4,752-	66- 24- B
HA8XX	32,760-	273- 40- B -20	YU2TW	8,148-	97- 28- B -20
HABIB	5,226-	67- 26- A -20	YU2CCY	28,826-	263- 34- C -80
HA6VV	3,294-	61- 18- B -20	4N4L (YU4OQ, op)	34,524-	274- 42- C -40
HA8VB	900-	15- 20- C -20	Y77KF	3,540-	59- 20- B -40
HASKDB/7	297-	11- 9- C -20	YU3EO	255,954-	1471- 58- C -20
HB9AA	268,752-	1018- 88- C	Y24Z	190,575-	1155- 55- C -20
HB9CX	133,188-	1009- 44- C -20	4N2V	138,785-	829- 55- C -20
HB9DX	9,270-	103- 30- C -20	YU1DX	92,502-	571- 54- C -20
HB9BVV	6,162-	79- 26- C -20	YU7MGU	5,472-	76- 24- C -20
IV3PRK	2,620-	47- 20- B -160	YU2AKL	4,374-	81- 18- B -20
I8WDX	95,739-	679- 47- C -40			
KEWH	7,644-	98- 26- C -40			
IK4MY	325,728-	1872- 58- C -20			
I1ZEU	227,976-	1357- 56- C -20			
IO1EEW (11EEW, op)	208,070-	1205- 58- C -20			
I0JBL	204,003-	1193- 57- C -20			
IO4FYF	122,616-	786- 52- C -20			
I2TZK	18,375-	175- 35- C -20			
IK0DZN	8,064-	96- 28- B -20			
IOKHP	7,452-	92- 27- B -20			
IK4CBM	5,229-	83- 21- B -20			
I4CSP	3,243-	47- 23- B -20			
I4LEC	54-	6- 3- C -15			
LA9VBA	6,216-	74- 28- C -20			
LA2IE	1,536-	32- 16- C -20			
LA5KK	759-	23- 11- C -20			
L13KVZ	21,156-	164- 43- C -20			
LZ1EF	9,576-	114- 28- C			
L13KNP	4,248-	59- 24- C			
L13K2M	3,180-	53- 20- C			
LZ1GD	4,599-	73- 21- B -20			
OH1BV	4,752-	66- 24- C -20			
OH8YF	4,275-	57- 25- C -20			
OH3GD	126-	7- 6- A -20			
OK1RI	868,854-	2114-137- C			
OK2BFN	100,278-	619- 54- C -20			
OK1KLV	8,658-	111- 26- B -20			
OK1AKX	7,245-	69- 35- B -20			
OK2BHM	4,290-	65- 22- B -20			
OK2SPJ	3,192-	56- 19- B -20			
OK3CGT	2,610-	58- 15- B -20			
OK1DGN	2,592-	54- 16- B -20			
OK2KVI	1,365-	35- 13- B -20			
OK1MNV	1,248-	32- 13- B -20			
OK1DZL	825-	25- 11- B -20			
OK3YDP	660-	20- 11- B -20			
ONBBK	70,227-	459- 51- C -20			
ON4AEK	16,182-	174- 31- B -20			
ON4NG	8,190-	105- 26- B -20			
OZ4HAM	2,622-	46- 19- B			
OZ1BTE	75,429-	493- 51- C -20			
OZ1AXG	56,718-	411- 46- C -20			
OZ1CUG	28,560-	238- 40- B -20			
OZ1INN	5,382-	69- 26- B -20			
OZ1HXQ	5,040-	80- 21- B -20			
OZ5EV	3,174-	46- 23- C -20			
OZ2BM	2,040-	34- 20- B -20			
PA3EOB	1,566-	29- 18- B			
PA3DOD	61,992-	492- 42- C -20			
PA8KDM	6,552-	78- 28- B -20			
PA3BZV	5,226-	67- 26- B -20			
PA3CZP	2,244-	44- 17- B -20			
PA0LF	1,218-	29- 14- C -20			
PA3DWA	540-	20- 9- A -20			
SM6DHU	63,450-	450- 47- C			
SK4EA (SM80G/A, op)	60,324-	457- 44- C -20			
SK3AH (SM3COL, op)	26,199-	213- 41- C -20			
SM3DMP	18,081-	147- 41- C -20			
SM7TV	840-	20- 14- B -20			
SM7HCW	780-	20- 13- C -20			
SM7FHH	600-	20- 10- C -20			
SM8BDS	210-	10- 7- B -20			
SP6DVP	10,998-	102- 33- B			
SP9KAO	273-	13- 7- B -80			
SP7PGK	18-	3- 2- B -80			
SP5ALV	4,290-	65- 22- B -20			
SP8HMK	4,218-	74- 19- B -20			
SP5PSL	2,400-	50- 16- B -20			
SP6JZG	1,386-	42- 11- B -20			
SP9HWN	390-	13- 10- B -20			
UA1ZO	33,840-	240- 47- B -20			
UW6MA	1,014-	26- 13- B -20			
UA4CO	513-	19- 9- B -20			
UB5WE	277,020-	972- 95- B			
RB5DX	2,256-	47- 16- C -80			
UB5IFN	1,188-	38- 11- B -80			
UB5UAT	31,191-	281- 37- B -20			
UT4UZ	1,845-	41- 15- B -20			
UC2AA	21,024-	219- 32- C			
RO40A	2,652-	52- 17- B -80			
UP3BH	19,176-	188- 34- B			
UP2BO	7,344-	102- 24- B -20			
UQ1GWW	113,724-	702- 54- B			
UR1RWX	5,700-	76- 25- B -20			
Y44UI/A	108,339-	469- 77- C			
Y52WG	480-	16- 10- C -80			
Y42LK	109,392-	688- 53- C -20			
Y22EK	35,904-	272- 44- B -20			
Y25HL	12,546-	123- 34- C -20			
Y38YK	7,224-	86- 28- B -20			
Y53ED	5,940-	90- 22- C -20			
Y24XJ	4,209-	61- 23- C -20			
Y49LF	2,916-	54- 18- B -20			
Y51XI	2,166-	38- 19- B -20			
Y20SM	2,031-	41- 17- B -20			
Y46IF	2,040-	40- 17- B -20			
Y34SG	1,920-	32- 20- B -20			

## Multioperator Single Transmitter

Asia	
HL9YG (+ HL9s FE,FI)	59,616- 432- 46- C
JE2YAF (JA2EZO, VUP, J15KVV, JR2SQU, JR7OMD, ops)	542,748- 1459-124- C
JA3YKC (JG3s MRT, WDN, JH4RHF, J3SERV, JR6NWN, ops)	210,526- 816- 86- C
JA7YFJ (JE7s IDA, RJZ, JF7KG, JG7s BBY, JPZ, ops)	42,777- 291- 49- B
JA8ZAV (JA8s OSV, VHI, ops)	5,985- 105- 19- B
JA1YEW (JA1WYZ, J1FVX, JP1UYT, ops)	1,254- 38- 11- B
UL8LWZ (RL7LAH, UL7s LEZ, 026-177, ops)	6,150- 82- 25- B
UM9MWO (UM8s MAA, MKO, ops)	144- 8- 6- B
Europe	
EA3EBN (+ EA3s ADW, CCN, CUQ, FBP)	401,355- 991-135- C
F6IFR (+ F6s CWN, GWV)	159,174- 717- 74- B
G4ANT (G3PXT, G4s ODC, SDP, WTD, G8AZR, ops)	226,545- 1373- 55- C
G6OI (G4s XOM, YBT, G6VAT, G8ZMP, G8AGH, ops)	10,179- 117- 29- C
HG6N (HA6s ND, NF, NQ, ON, OQ, YG, ops)	537,948- 1854-102- C
HA6KVN (HA6GVN, GVV, ops)	1,404- 36- 13- B
HB9A9 (+ HB9s ALM, ASD, CFU, CIP, CXZ, SFD, STL, HE9EAC)	328,848- 884-124- C
ISNPH (+ ISMPN, SDG, J8MPO, IK5BAF)	1,976,400- 3294-200- C
I1UIY (+ I2UBI, IK2s DUU, DVG)	428,442- 1414-101- C
OK2KOD (OK2s BDI, BHM, WAB, ops)	819- 21- 13- C
OZ3FYN (+ OZ1IZB)	363- 11- 11- B
SK7NKK (SM7s AIO, GWF, GXE, LYL, NWJ, RXD, ops)	33,408- 232- 48- B
SP9KJT (+ SP9MQA)	61,047- 399- 51- B
SP8KBM (SP8s ARY, GOU)	25,212- 191- 44- B
UZ6HXK (UA6-108-s 1665, 1740, 1838, ops)	3,664- 56- 23- B
UZ3QYA (3 ops)	936- 26- 12- B
UB4TWL (UB5s TBN, TB9, 079-248, ops)	3,906- 62- 21- B
UP1BYL (UP2s BMY, VJ, ops)	19,950- 175- 38- B
4N4A (YU4s EU, SO, ops)	640,305- 1377-155- C
North America	
KI4IW/C6A (+ G0AHY, WB2MRI)	259,236- 758-114- C
J74A (J73LC, K4LTA, N4FKO, NF5Z, ops)	2,294,802- 3174-241- C
KL7CQ (+ KL7P)	128,865- 781- 55- C
NP4CC (+ KP4BZ, NP4Z, WP4K)	8,663,148- 7356-311- C
T10RC (T12s CC, IY, KD, OZ, QL, US, T14SU, ops)	41,840- 858-180- B
VP2MU (AA4s GA, NC, WB8SDH, ops)	6,421,869- 7407-289- C
XE2EBE (AA6DP, K16EZ, N8BT, W7MAP, ops)	4,045,734- 4851-278- B
XE2JVR (+ K5FO, NV5S, XE2JVV, JVS)	2,379,195- 3237-245- B
Oceania	
DX6HT (DU9s AA, AF9s, BW, CC, CV, DQ, ops)	27,993- 301- 31- C
N1EE/KH6 (+ K1PR)	835,029- 1521-183- C
South America	
CE3BFZ	2,720,340- 3570-254- C
3G2Z	248,508- 767-108- B
CE4FYX	202,725- 1235- 51- C -15
CE3CYM	76,638- 482- 53- C -15
CX8CG	43,194- 313- 46- B -20
CX2AAL	239,064- 1423- 56- B -15
HC1HC	434,652- 2498- 58- C -20
HC1OT	485,469- 2839- 57- B -15
HK3MAE	313,785- 1835- 57- B -15
HK3JJJ	224,694- 1314- 57- C -15
HK1KWN	202,338- 1249- 54- B -15
HK3KRU	133,800- 892- 50- B -15
LU4LAV	966,240- 1830-176- C
LU2FDD	506,907- 1119-151- C
LU4D	62,646- 394- 53- C -40
LU1FLY	176,904- 1053- 56- C -20
LU2E (LU8DPM, op)	386,568- 2184- 59- C -15
K5KGLU	378,252- 2212- 57- C -15
LU8ESU	69,174- 427- 54- B -15
LU1E (LU3AJW, op)	231,348- 1483- 52- C -10
LU5UL	94,374- 642- 49- B -10
LU1UAI	16,533- 167- 33- B -10
OA4SS	1,421,550- 2430-195- C
OA4ZV	92,400- 616- 50- C -20
PP8BAT	438,150- 1270-115- C
PT2TF	282,576- 812-116- C
PT2TD	53,952- 281- 64- C
PY1LI	75,816- 486- 52- C -20
PY4OY	26,199- 213- 41- C -20
PYSIW	509,544- 3033- 58- C -15
ZY1OL	25,461- 207- 41- C -15
PY8WT	4,830- 70- 23- C -15
4M4A	3,131,208- 3768-277- C
YX5D	744,576- 1108-224- C
ZY1NEZ	186,732- 1197- 52- C
YX3A	86,142- 293- 98- A
YV2NY	70,560- 280- 84- A
YV3BKC	66,096- 432- 51- B -80
YV5IAL	52,350- 349- 50- B -15
ZP5LOB	63,210- 430- 49- C -15
9Y4AA	364,008- 2092- 58- C -20

Europe	
FF6LCT (F6s GIF, HMQ, HLC, ops)	111,945- 439- 85- C
North America	
K2SS/VP2V (+ K3EST, KT3Y, WA6VEF)	8,912,835-10071-295- C
Unlimited	
Asia	
JA2YKA (JJ1s BTC, MVV, JF2s DQJ, UTL, JG2s MTC, VTD, J2JFAU, JK2CZL, JAS5SY, JE2VBZ, ops)	809,580- 2060-131- C
JA5YBA (JA9s LNJ, VDA, -10148, JH9s KIF, JSF, JJ3URK, ops)	471,096- 1454-108- C
JA7YFJ (JR7s MPT, MRQ, JE7s ENK, JWU, MTI, XTQ, JF7s BJB, SWJ, JO1HBF, ops)	257,805- 1011- 85- C
Europe	
I33MAU (+ I3s FIY, J5S, ON)	889,371- 2229-133- C
North America	
VP9AD (+ VP9JP, W3MA)	6,483,720- 7610-284- B
Oceania	
KH6XX (+ KH6ND, N5CT)	6,062,463- 6898-293- C
W/VE CW Single Operator	
1	
Connecticut	
K1KI	1,628,928- 1792-303- C
K1TO	1,462,272- 1904-256- C
K1CC	1,296,822- 1682-257- C
K1ZZ	1,265,010- 1490-283- C
W1WEEF	960,915- 1363-235- C
K1XA	800,667- 1253-213- C
K1WA	475,728- 748-212- C
W1QK	443,157- 1033-143- C
K1IN	268,931- 669-133- C
N4XR	253,638- 427-198- C
WA1FCN	161,640- 449-120- C
K1BV	140,868- 516- 91- C
WB9HH	92,241- 277-111- C
WA1LVW	24,180- 124- 65- C
KH6CP/1	21,600- 120- 80- A
AB1U	14,883- 121- 41- C
N1CC	5,967- 51- 39- C
KB1WR	4,950- 55- 30- B
KB1XD	3,375- 45- 25- C
K1RX	2,418- 31- 26- C
W1NG	6,156- 57- 36- C-160
W1BWS	1,008- 21- 16- C -40
K1RM	336,900- 1123-100- C -20
K1RU	289,170- 1071- 90- C -20
K1EF1	58,140- 285- 68- C -20
W1VH	19,908- 158- 42- C -20
K1EM	8,880- 80- 37- C -15
Eastern Massachusetts	
K5ZD/1	1,117,368- 1478-252- C
K1VR	524,088- 1004-174- C
W1FJ	501,930- 845-198- C
KA1DWX	290,928- 551-176- C
A13E	183,600- 408-150- C
K1GJ	72,765- 231-105- A
W1GH	65,199- 211-103- C
K1CLN	40,848- 148- 92- C
KT10	30,690- 155- 86- C
KA1CLV	24,339- 133- 61- B
N1DC	13,677- 97- 47- B
N1AU	8,160- 61- 40- C
KA1MI	6,954- 61- 38- B
W1OPJ	3,744- 52- 24- B
K1EI	2,064- 43- 16- B
W1PLJ	1,302- 31- 14- B
W1VF	150,696- 728- 69- C -80
K1RU	89,043- 443- 67- C -80
K1VUT	5,325- 71- 25- C -40
Maine	
N1AFC	52,437- 227- 77- A
New Hampshire	
KM1H (KQ2M, op)	1,763,715- 1915-307- C
K1F	1,735,344- 1854-312- C
K1AR	1,399,398- 1631-286- C
K1DG	1,042,152- 1384-251- C
AK1A	560,394- 978-191- C
K1PTF	53,568- 192- 93- B
KA1LMR	6,864- 52- 44- B
KB1PZ	189- 9- 7- A
W1VY	17,100- 95- 60- C -20
W1END	9,207- 93- 33- B -20
Rhode Island	
K1IU	667,116- 1044-213- C
KSJ1	521,478- 999-174- C
W1RFQ	6,720- 70- 32- B
W1ILCA	3,744- 39- 32- B
N1EIA	2,232- 31- 24- B
K2M2M	2,622- 46- 19- B -20
Vermont	
K2LE/1	834,606- 1194-233- C
W3ASOH	52,920- 196- 90- B
W1KHQ	36,654- 149- 82- C
B1B1A	4,371- 47- 31- B
KN1K	3,444- 41- 28- C-160
Western Massachusetts	
K1BW	1,312,038- 1638-267- C



Ron, SM0BTS, looking for multipliers in the contest.



George, K5KG in LU land, won seventh place on CW.



Paco, EA7XC, takes a break from his CW operation to pose for a photo.

K3ZLK	4,608-	48-32-B
K3ND	4,563-	39-39-C
KC3Q	4,320-	48-30-C
K3YD	2,736-	38-24-A
W1BET	2,415-	35-23-C
WA3NNA	3,354-	43-26-B -40
N3CZB	3,888-	54-24-B -20

#### Maryland-DC

KC8C/3	1,053,360-	1520-231-C
K3ZZ	552,972-	908-203-C
W3USS (W9LT74, op)		
W3UJ	548,046-	918-199-C
W3AZ	305,472-	888-148-C
K3AV	240,624-	557-144-C
K23B	87,009-	299-97-C
W3GN	66,435-	215-103-C
K3SA	66,000-	200-110-C
K3NS	42,240-	176-80-B
W3TFA	26,880-	128-70-B
W3VPL	9,792-	68-48-B
N3RR	714-	17-14-C -40
W3HXI	106,398-	514-69-C -40
W3TUX	49,950-	370-45-C -20
W3EEE	2,544-	53-16-B -20
	1,482-	26-19-C -15

#### Western Pennsylvania

K3TUP (KR0Y, op)		
K3LR	1,258,614-	1427-294-C
W3HDR	1,067,469-	1313-271-C
W3FGS	20,904-	104-67-C
K3HGR	3,654-	42-29-B
K3UA	396-	12-11-B
AD8J/3	2,652-	34-26-C -160
	65,340-	396-55-C -20

#### 4

#### Alabama

KR4F	221,517-	453-163-C
WB4AKE	54,435-	191-95-C
W24F	28,116-	132-71-C
K4MG	27,675-	123-75-C
K5RY	741-	19-13-B -15
NA4JF	1,350-	25-18-B -10

#### Georgia

WX4G	1,164,282-	1459-266-C
K4BAI	413,055-	685-201-C
KX4R	163,820-	404-135-C
W1UA	79,875-	213-125-C
W4DXI	70,596-	212-111-C
N8LM	65,562-	223-98-B
W8ZF/4	62,988-	181-116-B
W8CNL	19,251-	93-69-C
KB4GID	17,751-	97-61-A
K4PI/M	2,916-	36-27-B
K4TEA	8,760-	73-40-C -160
W4UE	6,264-	58-36-B -80
WN4KKN	180,810-	735-82-C -40
W4JFL	15,990-	130-41-B -20
N4NX	13,158-	102-43-C -20
W9KTB/4	2,091-	41-17-B -20
NA4VZ	43,680-	208-70-C -15

#### Kentucky

N4XM	255,786-	479-178-C
N1WR/4	48,024-	184-87-B
WB4FOT	23,058-	122-63-C
K4FU	43,261-	229-63-C -40

#### North Carolina

K4PB	147,396-	346-142-C
NN4Q	112,791-	287-131-A
K4JO	60,564-	206-98-C
KA3PDG	21,840-	130-56-C
N4SU	4,500-	50-30-C -160
N4ZC	112,860-	570-66-C -80

#### Northern Florida

W4WKO	46,656-	162-96-C
WD4IO	35,154-	126-93-B
NV4Y	19,845-	105-63-C
W4RVU	17,820-	90-66-B
W4VQ	10,323-	93-37-C -80
K4XS	194,400-	810-80-C -40
WC4E	104,652-	513-68-C -20
KD1U	1,782-	33-18-B -10
W4DRK	189-	9-7-C -10

#### South Carolina

W3VT	907,776-	1182-256-C
W6OKX/4	84,966-	238-119-C
W2FCC	7,866-	69-38-C

#### Southern Florida

N8DH	435,969-	723-201-B
WD4AHZ	149,742-	354-141-B
W4YN	74,250-	225-110-C
WD4JNS	44,589-	167-89-B
K5OTI/4	26,487-	109-81-C
WD4JNS	19,008-	99-64-B
K8UNP	7,920-	55-48-C
W2SDB/4	2,448-	34-24-C
N4IN	4,608-	48-32-C -160
W4OO	16,236-	132-41-C -40
K4JRF	4,452-	53-28-C -40
K1ZX	65,700-	300-73-C -15
WB4TDH	42,411-	211-67-C -15

#### Tennessee

W4XJ	691,020-	1047-220-C
N4IR	247,080-	710-116-C
K4OAO	103,887-	291-119-B
K23Z	30,375-	135-75-B
W5RUH	7,686-	61-42-B
N4UB	6,840-	60-38-A
N4TG	9,576-	84-36-C -15

#### Virginia

N4HB	155,628-	396-131-C
W4YE	146,688-	382-128-C
N4RA	71,688-	232-103-C
K4OD	65,751-	217-101-C
W44WKY	62,115-	205-101-B
N3OS	60,066-	213-94-C
W4XD	56,856-	184-103-C
K4JM	51,273-	211-81-A
K4BAM	49,296-	208-79-C
WB4BVY	48,636-	193-84-C
K4FPF	45,264-	184-82-B
N4MM	38,220-	140-91-C
N4JT	27,186-	197-46-C
K4RLJ	22,326-	122-61-B
W4VC	18,816-	112-56-B
K6ETM/4	17,700-	100-59-C
W4UG	8,040-	67-40-C
W4KMS	4,200-	50-28-C
N4ZR	2,622-	38-23-C
K4JTK	900-	20-15-B
N4XD	7,242-	71-34-C -40
N4MO	107,334-	534-67-C -20
K4RDU	462-	14-11-C -10

#### 5

#### Arkansas

K5FUV	7,548-	68-37-C
W5EIJ	7,128-	66-36-C

#### Louisiana

NT5G	98,952-	266-124-B
W5OB	61,776-	208-99-C
WC5D	61,200-	200-102-B
N5GPP	8,256-	64-43-C
NO5W	1,020-	20-17-A

#### Mississippi

K5MK	198,768-	404-164-C
K5SVR	93,225-	275-113-C
W5UO	54,708-	188-97-B

#### New Mexico

K3L	202,134-	571-118-C
N5EPA	64,428-	236-91-C
NC5O	61,758-	219-94-B
W5UR	36,408-	148-82-C
W7LHO	14,841-	97-51-C
K7UP	13,287-	103-43-A
W5TTE	4,104-	57-24-A
W5SUV	48-	8-2-B
W5TVX	2,610-	58-15-B -20

#### North Texas

N5RZ	1,272,414-	1463-286-C
N5AW	315,468-	508-207-B
N5RM	289,380-	530-182-C
WM5K	261,405-	555-157-C
N5JB	242,136-	531-152-C
K5LP	189,144-	444-142-C

#### N4QS

KA5W	137,160-	381-120-B
N5UA	130,848-	376-116-C
K5RX	102,708-	317-108-C
W5MW	62,964-	212-99-C
WA9FWO	58,236-	211-92-C
K5KJ	13,617-	89-51-A
NG5A	9,720-	81-40-B
K5RR (WD5K, op)	1,584-	24-22-B

WQ5W	48,675-	295-55-C -40
NX5H	14,490-	115-42-B -40
W5FO	9,450-	90-35-C -40
W5BOS	151,164-	663-78-C -20
N5IM	69,810-	358-65-C -20
K9LA/5	31,265-	193-54-B -20
	3,060-	51-20-C -10

#### Oklahoma

N5OK	44,388-	137-108-C
------	---------	-----------

#### South Texas

K5DB	92,391-	299-103-C
N5JJ	67,404-	274-82-C
N5HB	34,410-	155-74-B
W5KCR	34,056-	172-66-C
N5DEE	22,725-	101-75-C
W5HRE	18,315-	111-55-B
N5IVF	81,180-	492-55-C -20
W5VX	78,192-	362-72-C -15
W5AC (WQ5C, op)	26,928-	187-48-C -15

#### West Texas

KD5IA	18,837-	161-39-C -40
WF5E	96,075-	427-75-C -20
W5UDX	17,670-	155-38-C -15
W5VLX	2,160-	40-18-C -10

#### 6

#### East Bay

K6ATV	87,000-	290-100-B
W6GG	30,846-	194-53-C
K6CSL	13,530-	110-41-B
W6FDQ	11,169-	73-51-C
W6B5Y	24,804-	156-53-C -20

#### Los Angeles

W6AE	231,255-	571-135-C
N6IC	203,190-	521-130-C
N6DKP	140,238-	371-126-C
K6EID	113,904-	339-112-C
N6DG	90,072-	278-108-C
N6VI	85,554-	291-98-C
W6ET	70,218-	249-94-C
A6IZ	49,200-	205-80-C
W6ABW	46,842-	211-74-C
W6NNV	43,344-	172-84-B
N6AA	32,436-	159-68-C
N6AW	30,303-	259-39-C
N6IBP	22,770-	138-55-B
W6CES	17,589-	122-48-C
W6MFC	17,010-	126-45-C
K6EV	12,936-	77-56-C
K6RQ	10,836-	84-43-C
K6GO	8,991-	111-27-B
NK6A	8,874-	87-34-C
K6SAS/6	4,620-	70-22-B
K6KP	3,663-	37-33-C
K1EQA	864-	24-12-A
K6ICS	540-	15-12-B
K6DDO	1,260-	28-15-C -160
N6BI	95,178-	547-58-C -40
K5KT/6	3,105-	45-23-C -40
W8AKS/6	594-	18-11-C -10

#### Orange

W6BA	61,598-	236-87-C
W6JC	37,635-	193-65-C
W6SX	1,683-	51-11-C
K6VI	40,140-	223-60-B -20

#### Santa Barbara

W6FGV	81,216-	282-96-C
W6LUX	43,818-	218-67-C
K6JG	18,000-	100-32-C
N6VR	8,064-	84-60-C -40

#### Santa Clara Valley

N6NF	63,420-	302-70-B
------	---------	----------

#### KD6PY

N6AN	58,032-	248-78-A
N6SV	54,288-	232-78-C
WA6TKT	47,817-	253-63-C
W6PLJ	30,192-	136-74-C
W6SZN	10,890-	121-30-B
KA7PDM	10,080-	84-40-C
KJ7X	6,912-	64-36-C
K6KM	1,860-	31-20-B
W6MZQ	1,377-	27-17-C
KD6XY	1,083-	19-19-B
K6GAM	270-	10-9-C
W6ATO	9,396-	108-29-C -20

#### San Diego

K6NA	661,365-	1035-213-C
K6WO	54,900-	244-75-A
AA6EE	28,764-	141-68-C
K6MC	20,475-	105-65-C
N6ADK	252-	14-6-B -40
W6ZT	19,257-	131-49-C -20
N6ND	43,746-	317-46-C -15

#### San Francisco

W6JTI	225,924-	562-134-B
W6WB	102,660-	295-116-C
K6ZUR	64,206-	261-82-C
K6ANP	42,660-	158-90-C
N6QJ	26,052-	167-52-A
W6WD	1,554-	37-14-C
W6BIP	9,207-	93-33-C -80

#### San Joaquin Valley

W6REC	132,135-	383-115-C
KA6BIM	40,194-	154-87-C
W6BYH	25,344-	128-66-C

#### Sacramento Valley

K6DR	144,837-	399-121-C
W6NKR	52,008-	197-88-C
N6JM	47,472-	184-86-B
N6GG	126,480-	527-80-C -20

#### 7

#### Arizona

WA7WOC	93,177-	261-119-C
NG7S	52,398-	213-82-B
W7YU	42,042-	154-91-C
W7WUC	2,400-	40-20-C
W7LWU	243-	9-B
WA7NWL	45-	5-3-A
K7SP	231-	11-7-C -160
W7AYY	8,112-	104-2



ADTU	4,725-	45- 35-A
KJSD	162,810-	670- 81-C -20
K9VQK	4,116-	49- 28-C -20
K9VQ	7,884-	73- 36-C -15
<b>Wisconsin</b>		
K9CAN	276,108-	532-173-C
W9OP	140,844-	388-121-C
W9NA	35,916-	164- 73-C
N19C	15,834-	91- 58-B
NG9L	10,962-	87- 42-B
N9EZ	2,244-	34- 22-B
KJ9I	1,680-	28- 20-C-160
N4TZ	35,880-	184- 65-C -20
N9AW	75,636-	382- 66-C -20
W9GIL	62,409-	293- 71-C -20
W9WAQ	34,965-	185- 63-C -20
N9BUS	2,610-	30- 29-C -20
W9YCV	714-	17- 14-B -20

<b>0</b>		
<b>Colorado</b>		
K4XU/0	213,969-	443-161-C
W0KEA	201,117-	427-157-C
K6ZX	199,065-	577- 15-C
K0UK	176,649-	583-101-C
KJUG	124,416-	384-108-C
W0GOR	44,793-	189- 79-C
K10J	30,744-	183- 56-B
N0FFZ	8,262-	81- 34-C
N0CNV	7,752-	76- 34-A
K6KX	5,544-	56- 33-C
N1NM	33-	14-B
N1BZ	1- 162-	8- 6-B
N0HRJ	18-	3- 2-B
W0ZV	2,925-	39- 25-C-160
W0UO	9,660-	92- 35-C -20
W0JUA	137,592-	637- 72-C -20
K9AY	21,672-	168- 43-C -20
K0IYF	4,032-	48- 28-C -20
K0RF	240,219-	861- 93-C -20
W0YK	139,308-	611- 76-C -20

<b>Iowa</b>		
W0WP	448,146-	774-193-C
KF0H	387,706-	677-184-C
KJ0H	262,836-	588-149-C
N0SM	253,590-	535-158-C
W0IZ	135,792-	368-123-C
W0EJ	100,344-	296-113-C
K0CQ	81,096-	248-109-C
W0SR	76,320-	240-106-C
W0VX	55,692-	204- 91-C
KE0Y	53,064-	201- 88-C
K0IIR	44,499-	163- 91-C
AB0M	38,106-	174- 73-C
N0UB	19,494-	114- 57-C
NC0O	18,000-	100- 60-B
W0FO	11,934-	78- 51-C
WA9Y2N	11,220-	85- 44-C
K0JGH	10,626-	46- 77-B
KK0R	9,216-	64- 48-B
W4NIM	6,771-	61- 37-C
NB0H	6,224-	62- 34-C
KFOZ	4,350-	50- 29-B
K0BL	2,175-	29- 25-C
K0GT	429-	13- 11-A

<b>Kansas</b>		
WA0CFZ	27,105-	139- 65-C
W0WPL	15,312-	88- 58-B
NW0F	14,688-	96- 51-C
KB0G	38,796-	212- 61-C -40

<b>Minnesota</b>		
W0LP	16,929-	99- 57-C
KA0OMX	7,434-	59- 42-C
W0RXL	3,354-	43- 26-C -80
K0SR	107,775-	479- 75-C -20

<b>Missouri</b>		
W0JLC	826,560-	984-280-C
AK0M	86,040-	239-120-B
N10G	52,128-	181- 96-B
NS0B	51,207-	169-101-C
KA0P	5,202-	51- 34-B
KD0XL	4,386-	43- 34-B
W0PKO	2,394-	42- 19-C
NV0U	1,638-	26- 21-B

<b>North Dakota</b>		
K0CQ	36,105-	145- 83-C
K0C0U	1,890-	35- 18-C -40

<b>Nebraska</b>		
K0SCM	25,308-	148- 57-C
W0AT	1,824-	32- 19-C -20

<b>South Dakota</b>		
KD0EE	28,566-	138- 69-C
K5LZT	150-	10- 5-B

<b>VE</b>		
<b>Maritime-Newfoundland</b>		
VO1MP	618,000-	1000-206-B
VO1DH	178,416-	472-126-B
VO1OST (VO1AW, op)		
VE1NH	17,328-	76- 76-B
	4,500-	60- 25-A

<b>Quebec</b>		
VE2AYU	316,872-	652-162-C
VE2FFE	3,000-	50- 20-C -20

<b>Ontario</b>		
VE3KP	266,742-	609-146-C
VE3ST	92,412-	302-102-B

VE3NBE	64,728-	232- 93-B
VE3XN	22,563-	109- 69-C
VE3TEE	1,836-	34- 18-B
VE3INQ	1,596-	28- 19-B-160
VE3CUI	4,620-	55- 28-C -80
VE3NXQ	23,532-	148- 53-B -20
VE3AEJ/3	324-	12- 9-C -10

<b>British Columbia</b>		
VE7WO	149,583-	419-119-C
VE7BS	684-	19- 12-C-160

## Multioperator Single Transmitter

<b>1</b>		
K1YR (+ K1RX)	1,431,102-	1741-274-C
KYIH (+ AK4L,NJ2L,NT2X)	1,129,464-	1512-249-C
KM1C (+ KB1T,KM1P,W1PH,W8B8TH)	1,067,154-	1406-253-C
W1PH (+ KM1P)	351,936-	624-188-C
W1RR (+ NET)	228,420-	470-162-C
W1AW (AH2W,N1CIX,NG1J,WA4CMS, WB1FTH, ops)	226,560-	590-128-C
W1OP (+ KA1KWE,N1AKO,WA1JHV, ops)	101,178-	462- 73-C
K1GW (+ K1KA)100,602-	486- 69-C	
NC1B (+ KA1KPH)	85,800-	286-100-C
NC1M (+ K1FFX)79,650-	295- 90-C	
KA1KPH (+ NC1B)	43,065-	145- 99-C

<b>2</b>		
KY2J (+ NA2N)	728,448-	1084-224-C
K2QMF (+ KA2UJH)	279,936-	648-144-C
K2TD (+ NET)	197,478-	414-159-C
W2UI (+ N3KR)	197,448-	433-152-C

<b>3</b>		
N3AD (+ NET)1,283,130-	1614-265-C	
W3GG (+ K3RT)	1,105,425-	1445-255-C
K3PA (+ K3S OX,YL)	578,088-	888-217-C
N3LR (+ KR3W,N3NA)	538,704-	1032-174-C
W3MA (+ KS3D)	413,424-	783-176-C
K3UEI (+ NET)	404,550-	725-186-C
KB3MM (+ N3ARK,WB3LFZ)	345,876-	703-164-C
KS3F (+ NE3F)	311,634-	597-174-C
N3BNA (+ NB3J,N3DY)	283,065-	565-167-C
W3HVQ (+ N3BER)	166,675-	475-131-C
AA3B (+ KA3BER)	130,320-	362-120-C
AA3B (+ KA3BER)	130,320-	362-120-C
NA3K (+ NET)	99,667-	243-123-C

<b>4</b>		
K3KG (+ K4FJ,W4NL)	1,464,300-	1624-300-C
K0HLB (+ W0MHS)	425,484-	892-159-C
<b>5</b>		
W5ASP (+ K5s MA,TU,WA,N5s BA,EA, W5ASP,W5A2VE)	784,446-	1157-226-C

<b>6</b>		
AG6D (+ N1EE,W6s NWS,TMA,W6CI, W7XA)	324,480-	676-160-C
WV6N (+ W6UQF)	148,623-	463-107-B
WK6V (+ K5KT,N6HCS,WB0QPO)	124,740-	396-105-C
WA6WZO (+ KD7EY,WA6WZN)	61,692-	388- 53-C
K6LRN (+ NET)	56,176-	232- 81-B
WK6E (+ NET)	43,440-	181- 80-C
NZ6N (+ NET)	30,843-	149- 69-C
W6XR (+ NET)	17,856-	124- 48-B
W6GC (+ NET)	11,931-	97- 41-B
W6EL (+ NET)	4,356-	44- 33-B
WX6M (+ NET)	2,829-	41- 23-C

<b>7</b>		
N7NG (+ WA6AUE)	343,185-	685-167-C
WA7EGA (+ NQ7M)	272,826-	659-138-C
WA7NIN (+ W6OAT)	193,440-	413-155-C
<b>8</b>		
K8AZ (+ K8NZ,KQ8M,N8AA,W8HSK, W8KIC)	1,144,746-	1462-261-C
<b>9</b>		
W9NNE (+ ops)	258,408-	582-148-C
NB9C (+ N9EJL,N9AM,NF9S)	201,801-	491-137-C
NE9U (+ KA9LAQ)	35,904-	176- 68-B

<b>0</b>		
N0XA (+ AB0s W,X,K0s RWL,UAA,VBU, VXU,WA0TKJ) 789,888-	1088-242-C	
W0NA (KB0U,W0s AR,CY,YR, ops)	133,902-	346-129-C
AB0P (+ WB0HCH)	94,233-	311-101-C

NOCKC (+ KH6JTW)	35,298-	159- 74-B
<b>VE</b>		
VE3IY (+ VE3EDG)	326,340-	588-185-C
VE8RCS (+ VE3PFC)	3,960-	60- 22-C

## Two Transmitter

NR5M (+ K2TNO,NT5D,K5GN, KN5H,NM5M,WB5M,W9AGH)	2,598,114-	2503-346-C
N3RG (+ N2AA,WA2HGM,NF2L,N2ME, K2TW,K3JLT)	2,574,000-	2600-330-C
N3RS (+ KQ3F,K3JG,KT3M,N3RD)	2,535,456-	2401-352-C
K2TR (+ K2s RO,XA,WA2SPL,WB2KMY)	2,191,140-	2220-329-C
KS8S (+ NZ4K,KU8E,KD8NS,AD8P, KA8PLH,KN8S)	1,715,112-	1743-328-C
K4VX0 (+ AH2U,N4CC,K9s BGL,FU,LJN, KM9P,WB0HUN,KA0YBS)	1,667,340-	1770-314-C
N6RO (K3EST,N6BT,K6TMB,WA6VEF, W6SZN, ops)1,525,188-	1876-271-C	
K1RQ (+ KB1s KE,W,NB1Y,NJ1F, WA1ZAM)	979,872-	1348-236-C
NQ4I (+ W14R)	912,978-	1149-261-C
WA8DXG (+ NBDCJ,WBS CZN,JGU,WA8s BIN,RJNR)	717,030-	1285-186-C
KQ20 (+ K2BK)683,280-	1040-219-C	
K1XM (+ KQ1F)513,216-	792-216-C	
K6ZM (+ CE3AQ,K4UVT,KI6EZ,NB6L, AK6T,WZ6Z)	352,182-	743-158-C
W3KWH (KA3s KSD,PJS,N3EOF,K3SJ, KT3L, ops)	54,530-	274-115-C

## Unlimited

W3LPL (+ K1DQV,KA1GD,WB3JRU, K3s KU,RA,TM,KM3T,KT3Y,KT4W,NW5E, W6AXX,N8II)3,418,959-	3007-379-C	
W3GM (+ K3s GM,IPK,ND,N3ATQ,W3s FV, GM,GU,WA3JUZ)	1,870,914-	1913-326-C
K300 (+ K3s NZ,ZW85- 1535-317-C		
K4JPD (+ W4HQV,W4DKJ,K4VCO)	7,353-	57- 43-C

## DX CW Single Operator

<b>Africa</b>		
CT3CU	754,632-	1338-188-B
EA8RCT (OH2BH, op)	2,224,218-	3182-233-C
EA8BIE	72,891-	267- 91-A
EA8IR	40,887-	231- 59-C
EA8RL	106,950-	713- 50-C -80
EA8BCJ	720-	20- 12-C -20
HZ1HZ	185,367-	637- 97-C
TU4CG	307,197-	957-107-B
JG1FVZ/5N0	257,796-	682-126-C
5T5CJ	949,560-	1640-193-C
9J2EZ	67,584-	512- 44-C -15
9L1SL (KD3F, op)	218,064-	616-118-B
9Q5NW (N4NW, op)	130,968-	408-107-C

<b>Asia</b>		
HL1LW	4,968-	92- 18-B -20
DE2YRD	525,933-	1161-151-C
JH7WKK	481,152-	1253-128-C
JA7RHQ	452,736-	1152-131-C
JA7FRV	338,709-	889-127-C
JH7LWK	289,926-	819-118-C
JA2UE	212,544-	656-108-C
JA7SUR	59,943-	277- 53-B
JA1JQY	47,790-	270- 59-C
JA9CJW	47,061-	249- 63-B
JA2UOT	31,185-	189- 55-B
JA7JHT	28,152-	184- 51-B
JE1AER	24,381-	189- 43-B
JH6TYD	19,800-	150- 44-B
JA1DFQ	17,589-	143- 41-B
JA6CEJ	8,640-	96- 30-A
JA4ATV	7,227-	73- 33-C
JA2DN	6,875-	85- 25-A
JA7ASD	5,700-	76- 25-B
JA3ARM	5,213-	78- 22-C
JA1VZM	5,104-	71- 21-B
JH7AJD/1	4,500-	60- 25-B
JA8SW	4,386-	86- 17-C
JE7IWP	3,960-	66- 20-B
JA8AJE	3,540-	59- 20-B
JS1OSP	3,249-	57- 19-B
JA1MTR	2,808-	52- 18-B
JA1JGP	2,520-	56- 15-B
JE1JAX	2,520-	60- 14-B
JE1TRJ	2,475-	55- 15-B
JA6JHW	1,677-	43- 13-B
JG3BHD	1,548-	43- 12-B
JA6BWH	1,044-	29- 12-B
JN1AIF	726-	22- 11-A
JA1AAT	390-	13- 10-B
JA3JWB	84-	7- 4- B
JE1NZW	192-	16- 4-C-160
JE1SPY	97-	7- 2-C-160
JA1YBK (JH0LFE, op)	9,000-	120- 25-C -80
JA8DNV	3,782-	66- 19-C -80
JH4UYB	1,452-	44- 11-C -80
JA1KFX	1,368-	38- 12-B -80
JR0XJO	1,254-	38- 11-B -80

JA2FJP	1,056-	32- 11-C -80
JA7HMZ	83,202-	566- 49-B -40
JA9NFO	82,767-	587- 47-C -40
JA8UMV	46,092-	334- 46-B -40
JJ1GXY	42,966-	341- 42-B -40
JA1JGK	31,347-	243- 43-C -40
JA0YAK (JH0USD, op)	26,250-	250- 35-C -40
JA7UMT	21,177-	181- 39-C -40
JR3BOT	19,530-	210- 31-C -40
JA3YDS	12,537-	199- 21-B -40
JE3ZFS	8,037-	141- 19-B -40
JA1NYV	1,719-	44- 13-B -40
JG2LGM	888-	37- 8-B -40
JA7KM	744-	31- 8-B -40
JA7FFN	420-	20- 7-B -40
JA2SAP/1	84-	7- 4-B -40

OK1DKW	28,200-	188- 50-B	UV6HFK	105-	7- 5-A -80	Y51YJ	5,475-	73- 25-C -20	HK3MAE	2,052-	36- 19-B -10	UP1BYL (UC2WAQ,UP2s BKW,BWM, 038-1052, ops) 336,240- 130-C
OK1IKZ	25,380-	180- 47-B	R4E4PC	4,725-	63- 25-B -40	Y32EE	5,304-	69- 26-C -20	K5G/LU	2,062,341- 2829-243-C		UP1BYC (2 ops) 33,666- 181- 62-B
OK3CEJ	23,040-	160- 48-B	RA6LW	1,938-	38- 17-B -40	Y31JA	5,175-	75- 23-B -20	LU6UOIZ	529,431- 1483-119-C		Y39ZF (Y39TF,Y49RF, ops) 126,957- 421-101-B
OK3CDZ	20,790-	165- 42-B	UA1ZO	131,040-	780- 56-B -20	Y26FL	4,536-	72- 21-B -20	LU1EWL	96,045- 337- 95-B		Y54ZL (Y54s ML,NL, ops) 51,957- 252- 69-B
OK1DRY	13,824-	128- 36-B	UA6BPM	10,701-	123- 29-B -20	Y36YM	3,360-	56- 20-B -20	LU8DQ	293,538- 1687- 58-C -20		YZ7V (YU7AV,YU7AX, ops) 714,306- 1598-149-C
OK1MST	12,420-	115- 36-B	OK3IA/UA3	7,332-	94- 26-B -20	Y24JL	3,348-	62- 18-B -20	LU5UL	127,512- 759- 56-B -20		YU2CKL (YU2AL, + ops) 430,614- 1018-141-C
OK1JZO	11,562-	94- 41-B	UA3ABT	2,907-	51- 19-B -20	Y26WM	3,312-	48- 23-B -20	OD5GZ/LU	58,500- 390- 50-C -20		YT5R (YU5s GB,JA,RS-109, ops) 604,464- 1028-196-B
OK1DZD	11,136-	116- 32-A	UA1OLL	2,109-	37- 19-B -20	Y66ZF	3,021-	53- 19-B -20	OA4ZV	40,032-	278- 48-B -20	YU7AJR (2 ops) 57,594- 331- 58-B
OK2OVZ (OK2PDL, op)	9,301-	100- 31-B	UA3TCJ	1,305-	29- 15-B -20	Y57ZA/Y32PA	2,223-	39- 19-B -20	P40GD (W2GD, op)			4U1UN (ON5HE,W6ISQ, ops) 260,073- 781-111-C
	6,350-	73- 29-A	UZ1AWO	990-	22- 15-B -20	Y21XI	2,106-	39- 18-B -20				
OK1DKR	9,301-	73- 29-A	UA1OAM	858-	22- 13-B -20	Y23TL	2,040-	40- 17-A -20				
OK1DMA	6,120-	68- 30-B				Y21EA	1,653-	29- 19-B -20	PJ9J	3,678,819- 3943-311-C		
OK2PAW	5,994-	74- 27-A	RB5WA	447,984-	1224-122-B	Y21XC	1,350-	30- 15-A -20	PJ2LS	604,464- 1028-196-B		
OK1KCF	3,657-	53- 23-B	UB5BZ	52,521-	287- 61-B	Y32JK	1,134-	27- 14-C -20	P77AQ	337,194- 786-143-B		
OK3YX	56,244-	436- 43-C -80	UB5QJN	33,330-	202- 55-B	Y21IM	960-	32- 10-B -20	ZY1APS (PY1APS, op)			
OK2BFN	21,522-	211- 34-C -80	RB7GG	31,842-	174- 61-B	Y31TF	840-	28- 10-B -20				
OK2BCI	4,860-	81- 20-C -80	UB5VKG	9,765-	105- 31-B	Y77YH	600-	20- 10-B -20	PY2KP	9,120-	80- 38-C -20	
OK1KFM	3,960-	66- 20-C -80	UB4DWVW	9,696-	101- 32-B	Y39UL	567-	21- 9-B -20	4M4A (K3UOC, op)			
OK1KNR	1,404-	36- 13-C -80	RT4UF	11,811-	127- 31-C -80	Y92ZL	312-	13- 8-B -20				
OK3CUG	495-	15- 11-A -80	RB5LO	8,100-	108- 25-B -80	Y36SG	75-	5- 5-B -20	YX3A	561,120-	1120-167-A	
OK1FKW	189-	9- 7-B -80	UB5IFN	3,705-	65- 19-B -80	Y24QL	72-	6- 4-A -20	YV1OB	61,884-	382- 54-C-160	
OK2PLD	180-	10- 6-B -80	UB5ILW	1,440-	24- 20-B -80	Y03BWK	20,580-	140- 49-B	YW7A (YV7QP, op)			
OK1DVK	144-	8- 6-B -80	UB5EPV	570-	19- 10-B -80	Y04BQV	420-	14- 10-B				
OK3CSW/P	22,932-	196- 39-B -40	UT4UI	18,537-	167- 37-B -40	Y02AQO	1,170-	30- 13-A -80	YV5IW	105,924-	679- 52-B -40	
OK2PCF	5,100-	85- 20-B -40	UB5NGA	8,190-	105- 26-B -40	Y04DCF	1,302-	31- 14-A -40				
OK1JPH	33,264-	252- 44-B -20	UB5ZBG	5,418-	86- 21-B -40	Y04XF	16,380-	140- 39-B -20				
OK2PO	26,676-	234- 38-B -20	UY5VA	2,205-	49- 15-B -40	Y06VZ	6,696-	93- 24-C -20				
OK2PLH	23,751-	203- 35-B -20	UB5HA	936-	24- 13-B -40	YU7SF	58,320-	270- 72-B				
OK1JJB	17,220-	164- 36-B -20	RB5HB	216-	12- 6-B -40	YU1LM	10,170-	113- 30-B				
OK2ABU	13,590-	153- 30-C -20	UB5UAT	25,272-	234- 36-B -20	YU2TW	6,408-	89- 24-B-160				
OK2PBQ	12,480-	130- 32-B -20	UB3GWG	19,110-	182- 35-B -20	4N1W (YU1SV, op)						
OK3CAL	11,136-	128- 29-B -20	UT4UX	18,792-	174- 36-B -20	4N4L (YU4OO, op)						
OK3IF	8,991-	111- 27-B -20	UB5IAL	15,606-	153- 34-B -20							
OK3THM	8,580-	110- 26-B -20	UT4UZ	14,112-	147- 32-B -20							
OK1MNV	7,875-	105- 25-B -20	UB4IWI	14,007-	161- 29-B -20	YU2KDE	50,274-	399- 42-C -40				
OK1DGN	7,659-	111- 23-B -20	UY5TE	8,580-	110- 26-B -20	YU7MGU	4,620-	77- 20-C -40				
OK3PO	7,272-	101- 24-B -20	UB5VK	6,930-	105- 22-B -20	YU3EO	215,412-	1238- 58-C -20				
OK3SQ	7,050-	94- 25-B -20	UB5AEO	6,534-	99- 22-B -20	YT3T (YU3BQ, op)						
OK1MSB	6,192-	86- 24-B -20	UT4UW	1,287-	39- 11-B -20	4N2V	157,410-	954- 55-C -20				
OK2BHQ	6,003-	87- 23-B -20	UB5AJB	1,254-	38- 11-B -20	YU1DX	158,492-	968- 54-C -20				
OK1SN	5,832-	72- 27-B -20	UB5ELN	1,221-	37- 11-B -20	YU7BU	122,808-	731- 56-C -20				
OK2YN	4,536-	72- 21-B -20	UC2LB	6,210-	90- 23-C -80	YU21U (YU1QD, op)						
OK3YDP	3,654-	58- 21-B -20	UC2AAQ	90-	6- 5-B -80							
OK2BGR	2,646-	42- 21-C -20	UC2IA	16,956-	157- 36-B -20	Y2ZS	71,883-	489- 49-C -20				
OK2PFP	1,677-	43- 13-B -20	UC2WAZ	2,592-	48- 18-B -20	YU7KM	8,961-	103- 29-C -20				
OK1OFT	1,218-	29- 14-B -20	RO4OA	14,790-	170- 29-B -80	Y73AU	252-	12- 7-B -15				
OK2TBC	1,173-	23- 17-B -20	RO4OZ	5,382-	78- 23-B -20	4U1ITU (W4KM, op)						
OK3SWD	924-	28- 11-B -20	UP2BIL	171,690-	590- 97-B							
OK1KAY	780-	20- 13-B -20	UP2BO	21,900-	146- 50-B							
OK1TW	510-	17- 10-C -15	UP2BHN	4,740-	79- 20-B -80							
ON8BK	45,825-	235- 65-B	UP2BIP	4,047-	71- 19-B -80							
ON4XG	41,958-	222- 63-B	UP2BKA	270-	10- 9-B -40							
ON6LO	14,580-	135- 36-B -20	UP2OJU	189-	9- 7-B -40							
ON6J	11,136-	116- 32-B -20	UP2BLQ	6,534-	99- 22-B -20							
ON8WN	1,938-	38- 17-A -20	UP2BPO	600-	20- 10-B -20							
OZ2HT	212,400-	708-100-B	UQ1GWW	251,328-	748-112-B							
OZ1IPP	85,629-	391- 73-C	UQ2GFB	75-	5- 5-A-160							
OZ2WQ	22,620-	145- 52-B	UQ2GMC	2,835-	45- 21-B -20							
OZ2RH	1,530-	34- 15-B -80	UR2RDJ	4,752-	72- 22-B -20							
OZ2YL	14,022-	123- 38-C -20	UR2RKG	1,980-	44- 15-B -20							
OZ2EDR	10,692-	108- 33-B -20	UR2RNG	720-	24- 10-B -20							
OZ1AGX	6,138-	66- 31-C -20	Y51XE	163,647-	627- 87-C							
OZ2IFFG/A	540-	20- 9-B -20	Y41ZF	90,180-	334- 90-B							
PA3BNT	2,996-	141- 52-B	Y21NE	61,131-	287- 71-B							
PA3ACC	15,660-	116- 45-B	Y43GO	42,303-	239- 59-C							
PA3DKX	11,931-	97- 41-B	Y78UL	40,401-	201- 67-C							
PA3DUA	5,940-	60- 33-B	Y32VN	30,600-	204- 50-C							
PA0CF	4,872-	58- 28-B	Y24LE	26,676-	171- 62-C							
PA3PTH	3,154-	83- 38-B	Y33TB	19,803-	161- 41-C							
PA0ADT	13,176-	122- 36-A -20	Y23VE	19,575-	145- 45-B							
PA0PLN	4,524-	58- 26-A -20	Y22LE	15,873-	143- 37-C							
PA0INA	3,726-	54- 23-B -20	Y58ZA/Y31SC	14,994-	119- 42-C							
PA0GG	2,772-	42- 22-A -20	Y46IF	12,960-	120- 36-B							
PA3BNH	240-	10- 8-B -20	Y41UF	12,600-	105- 40-B							
SM6DHU	118,800-	550- 72-C	Y21BE	11,016-	108- 34-B							
SM0COP (KB1Q, op)			Y26TI	10,455-	85- 41-B							
	15,621-	127- 41-B	Y21CL	10,032-	88- 38-B							
SM6BGG	7,722-	99- 26-C -80	Y22HF	9,486-	93- 34-B							
SM7EQJ	15,651-	141- 37-C -40	Y23QD	8,760-	73- 40-B							
SM7OEL	4,536-	63- 24-C -40	Y32QD	8,658-	78- 37-B							
SK3AH (SM3RL, op)			Y55TJ	7,956-	68- 39-C							
	28,956-	154- 38-C -20	Y67UL	4,680-	65- 24-C							
SM6BZE	16,335-	265- 33-B -20	Y75TH	3,780-	45- 28-C							
SM7FHJ	11,880-	110- 36-C -20	Y21VI	3,150-	50- 21-B							
SM0BTS	7,098-	91- 26-B -20	Y25SA	2,808-	52- 18-B							
SM7TV	6,723-	83- 27-B -20	Y23CM	2,310-	35- 22-B							
SM6OLL	6,212-	76- 29-B -20	Y22KO	2,142-	34- 21-B							
SM5CAK	4,134-	53- 26-C -20	Y56ZA	1,827-	29- 21-C							
SM3RAB	3,816-	53- 24-B -20	Y71VG	4,536-	72- 21-B -80							
SM0BDS	1,887-	37- 17-B -20	Y21RO	3,162-	62- 17-C -80							
SM1CNS	726-	22- 11-A -20	Y25ZO	972-	27- 12-B -80							
SP6FER	26,664-	202- 44-B	Y24YM	1,680-	40- 14-C -40							
SP5CJQ	11,877-	107- 37-A	Y37XO	672-	28- 8-C -40							
SP5HC	5,712-	68- 28-C	Y53ED	162-	9- 6-C -40							
SP3BGD	891-	27- 11-B	Y25DF	126-	7- 6-B -40							
SP2JKC/3	29,484-	273- 36-C -80	Y39ZH	21,762-	186- 39-C -20							
SP9CTW	3,876-	68- 19-C -40	Y37FL	13,965-	133- 35-B -20							
SP6HEK	33,633-	303- 37-B -20	Y33VL	13,860-	140- 33-C -20							
SP2ASJ	26,676-	247- 36-B -20	Y22EK	13,266-	134- 33-B -20							
SP5DIR	24,624-	216- 38-B -20	Y35WF	10,944-	114- 32-B -20							
SP6AUI	11,508-	137- 28-B -20	Y23RJ	10,752-	112- 32-B -20							
SP9BBH	9,144-	127- 24-B -20	Y44SN	8,820-	98- 30-B -20							
SP9ENV	7,743-	89- 29-B -20	Y21GO	8,649-	93- 31-B -20							
SP2EEZ	7,728-	92- 28-B -20	Y36TM	8,019-	99- 27-B -20							
SP9BRP	4,536-	72- 21-B -20	Y21NI	7,614-	94- 27-B -20							
SP6CYX	3,528-	56- 21-B -20	Y21RO	6,630-	85- 26-B -20							
SP6ORD	972-	27- 12-B -20	Y24VK	5,925-	79- 25-C -20							