



## ARRL Periodicals Archive – Search Results

### A membership benefit of ARRL and the ARRL Technical Information Service

**ARRL Members:** You may print a copy for personal use. Any other use of the information requires permission (see Copyright/Reprint Notice below).

**Need a higher quality reprint or scan?** Some of the scans contained within the periodical archive were produced with older imaging technology. If you require a higher quality reprint or scan, please contact the ARRL Technical Information Service for assistance. Photocopies are \$3 for ARRL members, \$5 for nonmembers. For members, TIS can send the photocopies immediately and include an invoice. Nonmembers must prepay. Details are available at [www.arrl.org/tis](http://www.arrl.org/tis) or email [photocopy@arrl.org](mailto:photocopy@arrl.org).

**QST on CD-ROM:** Annual CD-ROMs are available for recent publication years. For details and ordering information, visit [www.arrl.org/qst](http://www.arrl.org/qst).

**Non-Members:** Get access to the ARRL Periodicals Archive when you join ARRL today at [www.arrl.org/join](http://www.arrl.org/join). For a complete list of membership benefits, visit [www.arrl.org/benefits](http://www.arrl.org/benefits).

### Copyright/Reprint Notice

In general, all ARRL content is copyrighted. ARRL articles, pages, or documents--printed and online--are not in the public domain. Therefore, they may not be freely distributed or copied. Additionally, no part of this document may be copied, sold to third parties, or otherwise commercially exploited without the explicit prior written consent of ARRL. You cannot post this document to a Web site or otherwise distribute it to others through any electronic medium.

For permission to quote or reprint material from ARRL, send a request including the issue date, a description of the material requested, and a description of where you intend to use the reprinted material to the ARRL Editorial & Production Department: [permission@arrl.org](mailto:permission@arrl.org).

**QST Issue:** May 1988

**Title:** Results, 54th ARRL November Sweepstakes

**Author:** Billy Lunt, KR1R

[Click Here to Report a Problem with this File](#)



## 2010 ARRL Periodicals on CD-ROM

ARRL's popular journals are available on a compact, fully-searchable CD-ROM. Every word and photo published throughout 2010 is included!

- **QST** The official membership journal of ARRL
- **NCJ** National Contest Journal
- **QEX** Forum for Communications Experimenters

**SEARCH** the full text of every article by entering titles, call signs, names—almost any word. **SEE** every word, photo (including color images), drawing and table in technical and general-interest features, columns and product reviews, plus all advertisements. **PRINT** what you see, or copy it into other applications.

**System Requirements:** Microsoft Windows™ and Macintosh systems, using the industry standard Adobe® Acrobat® Reader® software. The Acrobat Reader is a free download at [www.adobe.com](http://www.adobe.com).

### 2010 ARRL Periodicals on CD-ROM

ARRL Order No. 2001

**Only \$24.95\***

\*plus shipping and handling

Additional sets available:

2009 Ed., ARRL Order No. 1486, \$24.95  
 2008 Ed., ARRL Order No. 9406, \$24.95  
 2007 Ed., ARRL Order No. 1204, \$19.95  
 2006 Ed., ARRL Order No. 9841, \$19.95  
 2005 Ed., ARRL Order No. 9574, \$19.95  
 2004 Ed., ARRL Order No. 9396, \$19.95  
 2003 Ed., ARRL Order No. 9124, \$19.95  
 2002 Ed., ARRL Order No. 8802, \$19.95  
 2001 Ed., ARRL Order No. 8632, \$19.95



**ARRL** The national association for AMATEUR RADIO™

SHOP DIRECT or call for a dealer near you.  
 ONLINE [WWW.ARRL.ORG/SHOP](http://WWW.ARRL.ORG/SHOP)  
 ORDER TOLL-FREE 888/277-5289 (US)

# Results, 54th ARRL November Sweepstakes

By Billy Lunt, KR1R and Mark Gamble, N1FOZ  
Contest Manager Contest Assistant ARRL

**Y**ear: 1930. Month: May. Event: First Annual ARRL Sweepstakes results published. By the Great Xerxes, how things have changed! Nowadays, to see a score of 13,158 points on the SS summary sheet induces a reaction from the entrant of "I only had a few hours of operation as my XYL planned a crystal party on both days!" But in 1930 this score, turned in by Joe Feeley, W1ADW, dominated all other scores for his first-place victory. There can be many contrasts drawn between the Sweepstakes of old and new, but none can be as striking as the number of entrants, multipliers or categories.

Back in 1930, there was only one entry category for Sweepstakes. Now, however, you can compete in any of three major entry categories—high power, low power and, the latest addition, QRP (5 watts or less output). The QRP category was heralded by the amateur community through their Contest Advisory Committee representatives and the ARRL Awards Committee. Participation within this most recent category exceeded expectations.

In 1930, the League consisted of only 68 sections. This past year the League introduced the 75th SS multiplier, West Texas. Another ARRL section has now been added. By the Board of Directors action, the West Indies Section has been split into two sections, Puerto Rico and the Virgin Islands. These two sections will be operative in the 1988 SS.

QSO rates in the contests of old must have been extremely slow by today's standards, as W1ADW worked a total of 153 stations in the first Sweepstakes, which lasted two weeks. How many of you "old-timers" remember that? The factor that probably had the greatest effect therefore was not the unreliability of one's rig, but the number of participants in the contest. In 1930 there were



CW op Hester, N4MPQ, finished with 15k points from the NC section.

116 entrants; in 1987 there were 1909. Almost all the 1987 participants scored over 13,158 points.

In the CW portion of this year's contest, 894 amateurs sent in entries. Each was vying for the top position in one of the following categories: high-power single-op, low-power single-op, QRP single-op and multioperator.

When the last echo of brass pounding had subsided, it was W5WMU decisively winning the honor of "SS CW Ace." Bill, K5GA, guest-operated at W5WMU during the contest. His dynamic ability to "run 'em" racked-up over 188k points. Winning low-power requires the ability to break through that pileup on the first or second try as you dial up and down the bands. Larry, NF7P, displayed his ability on the "Low Power Front" beyond doubt. He garnered an impressive score of 152k. Finesse is the only way to describe what is necessary to be a great QRP operator. To be heard through the QRM



15-year-old twins N1EBG and N1EBF operating at multiop station N1ADE.

isn't easy, but it is rewarding. Steve, N2IC, triumphed in this new category. In fact he maneuvered his station to the top with a score of nearly 108k. The AA5B twosome was awesome. Bruce, AA5B, and Scott, K5TA, ravaged the bands like "a pack of wolves." Their score of over 174k earns them the position of CW multiop SS record holders (the old record was set by K5CM in 1986 with 172k points).

On November 21, at 2100 UTC, in the phone portion, the words "CQ Contest" rang out like buckshot on all bands. Contest stations from around the USA and Canada contended for the prestigious position of number-one phone operator in the aforementioned category.

The uncontested champion of the high-power category, or "SS Phone Ace" if you will, was the venerable Dan, W7WA. His first-rate effort secured 304k points. Nice going Dan! In the low-power category, Dick, K4XU, was tops with a score of over 201k. Fred, KE7X, surpassed all other QRPers for the win in this category. His score of 113k secured this position. It wasn't even close in the multioperator category. The Colorado

## Division Leaders CW

Division	High Power	Low Power	QRP	Multioperator
Canada	VE7CC	VE7ARQ	VE3OOL	VE3ART
Atlantic	K3LR	K2ZJ	K3VW	WB2PSI
Central	W9RE	K9ZO	WB9HRO	KJ9D
Dakota	K0DD (K0KX,op)	W0UC	W0YHE	AB0P
Delta	W5WMU (K5GA,op)	K4LTA	K5MK	K5MC
Great Lakes	WD8IXE	K8ND	W8IDM	K8AQM
Hudson	W2RQ	W2GD	AA2U	—
Midwest	K4VX (NU9R,op)	K0VBU	KV0I	AB0S
New England	K1ZZ	K1CC	KH6CP/1	KA1KPH
Northwestern	W7NI (N6TR,op)	W7YAQ	N7DM	K7LED
Pacific	WA7NIN (W6OAT,op)	NF7P	KD6PY	W6BIP
Rocky Mountain	W0UA	K4XU	N2IC	AA5B
Roanoke	K4PQL	K0EJ	KD8G	K4IX
Southeastern	N4WW (K0LUZ,op)	K4XS	KB4GID	N8LM
Southwestern	K6LL	N6ND	K8ZH	W6UE
West Gulf	N5AU	KM5H	AC5K	K5CM

## Division Leaders Phone

Division	High Power	Low Power	QRP	Multioperator
Canada	VE7CC	VE6ATT	VE3OOL	VE3GAS
Atlantic	W3LPL (K3ZZ,op)	N2MM	K3WUW	K2ZJ
Central	AC9C	WA1UJU	NJ9C	K0RS
Dakota	K0DD	K1LL	W0YHE	N0HUN
Delta	W5WMU	K5FUV	—	N4TG
Great Lakes	WB8JBM (N8DCJ,op)	K8BL	NQ8Y	WD9INF
Hudson	KC7KU	KS2G	AA2U	K5NA
Midwest	K4VX (NU9R,op)	KV0I	WA0VBW	NQ0Y
New England	W1WEF	K1TO	KH6CP/1	K1NG
Northwestern	W7WA	K7KJM	KE7X	W7EJ
Pacific	N6BV	ND7M	KD6PY	WA7NIN
Rocky Mountain	K0RF (W0UA,op)	K4XU	W0LSO	K0UK
Roanoke	W4MYA	K0EJ	NK4Q	KC4DY
Southeastern	N4EEB	K4XS	KB4GID	W4AOL
Southwestern	K6LL	N6RJ	WB6JJE	KF6OG
West Gulf	N5AU	NT5V	W5VGX	K5CM

### Single Operator High Power Top Ten

CW		Phone	
Call	Score	Call	Score
W5WMU (K5GA,op)	188,700	W7WA	304,050
N5AU	183,600	K0DD	302,550
K3LR	179,250	K6LL	297,184
WA7NIN		K8NA	
(W6OAT,op)	179,228	(N6TR,op)	288,050
K5GN	179,080	N6BV	279,600
W7NI		W8BO	279,000
(N6TR,op)	177,008	W6GO	274,350
K6LL	175,350	K0RF	
N4WW		(W0UA,op)	268,950
(K0LUZ,op)	174,150	N5AU	259,850
N6BT		K5YNZ	
(WA6VEF,op)	174,000	(KE5CV,op)	259,350
W7WA	172,350		

### Multioperator Top Ten

CW		Phone	
Call	Score	Call	Score
AASB	174,450	K0UK	281,550
K5CM	171,750	W7EJ	276,150
K0RF	170,940	AA5B	272,550
K8AQM	162,504	K5CM	264,300
W8UE	150,750	WATNIN	249,232
VE3ART	141,408	WD9INF	245,100
ABBS	139,824	K9RS	229,800
AB0P	135,900	N8HUN	221,850
K5RR	133,350	K8CC	214,500
N8LM	121,104	NK7U	212,250

duo of Bill, K0UK and Larry, K0CL, won top spot with 281k.

Affiliated Club Competition was rugged in most categories. The unlimited category was an exception, as the only club to make the minimum requirement of 51 entries was Connecticut's Murphy's Marauders. They compiled a total of 4,285,148 points. The North Texas Contest Club was hot. Their combined efforts launched them to the top of the Medium Category with the highest of all club scores, 5,161,494 points. The gavel for Local Club Competition went to the River City Contesters of California. They rallied for a combined score of 1,643,670 points.

Thanks to everyone who participated in the contest and contributed to the success of the 1987 ARRL November Sweepstakes. Next year will surely prove to be another exciting contest. 73.

### SOAPBOX

#### CW

Checking old logs I find my first SS operation was in 1933. The QST report showed it to be a 9 (Nine!) day contest. The top score was a W9 with 495 contacts. Other calls listed then that were still at it this year included W6BIP, W9GIL and W9YB! (W1BIIH). Great fun! Missed NWT for a clean sweep. I broke my personal QSO record; it was my highest score since I started entering in 1978! (WB1CNM). It was a great contest and I enjoyed every sleepless minute of it! Looking forward to next year's Sweepstakes already (W1KEE). There is no other contest to compare to SS. I finally got my operating system down—four hours before the final gun. All the better for next year. (KM1G). I had hoped to Work All States for "We the People" award but was unable to. This is a great QRP contest with lots of good listeners (KZ1L). If I knew how to really operate CW, I would be a holy terror in this contest (WB1GQR). 21 MHz sure cooperated this year. Barely had time to get on 14 MHz.

### Single Operator Low Power Top Ten

CW		Phone	
Call	Score	Call	Score
NF7P	152,400	K4XU	201,750
K1CC	145,928	K4XS	198,468
K4XU	144,152	W0CP	195,600
W2GD	143,850	N6RJ	189,750
N6ND	140,700	W0JR	
KZ8E	138,750	(K0EU,op)	188,700
K7UP	132,150	KV8I	171,828
KY2P	128,760	K8SCM	170,528
K4XS	127,604	K7KJ	162,504
NE6I	126,150	K1LL	160,650
		K7LXC	160,432

Same time spent as last year but made more contacts with one-fifth the power (W2DW). Nice to see some top-notch competitors in the NLI section. It makes SS a true sport! (KD2RD). Really enjoyed the contest; I guess CW is not dead. Sure wish I could copy some of the high-speed guys. But when you're 83, you can't write that fast (W2NPT). I got all the hard sections, and missed "easy" SJV! (AA4GA). Lost all 40/80-meter QSOs in the deep dark reaches of a computer! (WA4SSB). The SS is the best of all contests! My 35th SS and it is still a thrill to get the clean sweep! (W4YE). I worked my first Sweepstakes in 1937. 102 QSOs in 39 sections in 26 hours, over two weekends. 50 years later I get my first "clean sweep." It was a real thrill to get number 75 (W4XD). Had a ball even without a keyer. Especially when AL7CQ called me! Can't wait for next year (WB8VFA). Incredible QRM! Sent QRM and 3 stations on the same frequency sent yes! A true contesters' contest. Hope I have more time next year (WM5K). Is there really a West Texas section? (WV5K). The 1987 CW Sweepstakes was a blast—great 40-meter-band conditions and my best CW score in 7 years of participation! (WA6GFR). 368 of 721 QSOs east of the Mississippi River—W1WFF and K1AR, 20 over S9 on both 20 and 40 meters (AH6AZ). Thanks for the new QRP class. I usually run a QRO station. It is nice to try a new low power mode. Good thing 15 and 10 were open. See you next year for "QRP" SS (NL7DU). Don't ask...! (W7GFT). Lots of active stations and good conditions = best SS ever. (NF7P). Boy, I just can't seem to get a sweep on CW, 4 of the 5 I missed were Canadian Sections. Try, try again!! (KW8G). My thanks to all those Q-classers who made

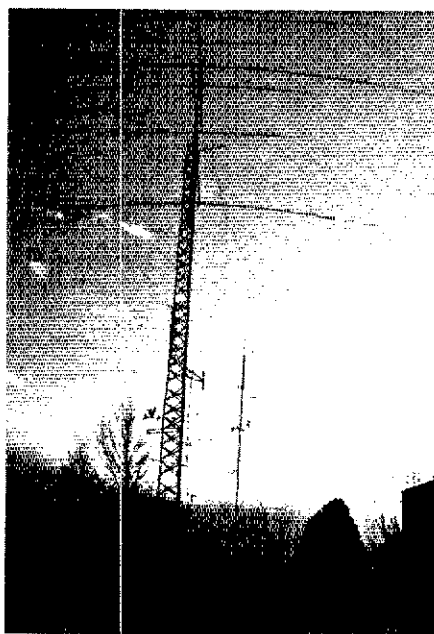
### Single Operator QRP Top Ten

CW		Phone	
Call	Score	Call	Score
N2IC	107,856	KE7X	113,120
KV0I	97,532	W0LSO	112,500
K0SCM	92,448	K7SS	103,200
K0FRP	80,640	W0KEA	81,000
AA2U	77,818	KD6PY	72,854
KT5X	73,584	W5VGX	70,000
WB9HRO	69,264	K3WUW	61,200
KD6PY	68,112	KH6CP/1	46,096
KH6CP/1	67,104	WA0VBW	44,208
KB1W	66,640	W0YHE	43,680

made pulling their signals through the static and QRM more challenging (WD8IXE). Where, oh where, is VE4? First non-sweep in four years... my first QSO the day after the test? You guessed it—VE4!! (K9UIY). First contest ever, doubled my goal—not bad for a 19-year-old (been a ham eight weeks) (N9GVT/AA). I was very excited to see that a QRP mode was added. Have operated at 5 watts or less for the last 5 years and my results looked kind of poor when compared to all the "150 watt" and below stations. Really enjoyed SS—many comments like, "super signal for 5 watts" (W0YHE). Who else will admit they worked SS CW with a computer? I did and had a ball! (WB0YUC). My first serious QRP contest—I was amazed (KV0I). Checked the station 15 minutes before the contest only to find that an arctic fox had chewed through the coax (VE8KD).

#### Phone

First Sweepstakes contest for me, will do it bigger and better next year (WA1PLK). We ran multiop from my QTH with my tower and beam, and Jim's (KS1A) rig. Our object was to score high and get a clean sweep. What a great feeling to have a VE8 call us 22 QSOs into the contest!! We did get the clean sweep. First time ever! (WB1GEX). Sweepstakes this year felt more like Field Day! The commercial power went out 2 minutes before the contest, so I had to get the generator running. I ended up using emergency power for the first hour and a half of the contest (AK1K). Our second multi-op effort and we improved our score over last year! (K1NG). Next year, I may give QRP a try, particularly if 10 and 15 continue to improve (WB2ROV). The Sweepstakes helped me get Alaska for WAS after 13 years of "CQ Alaska"! (WA2YEI). Worked a few states I never knew existed. Will be back next year more prepared (WD2AHD). Heard several VE2 and ME stations, but running QRP phone it was tough to snag them. It's like pulling chicken's teeth! This was a real challenge, fun and totally exhausting (K3WUW). Had a lot of fun! First time ever working a phone contest! I was amazed what one can do with a "hunk of wire thrown out a window"! I'm not the contest type because I always end up "listening"! (KA3QXP). Was nice to be home in SC for the Sweepstakes (KJ4KB). K8MJZ must have a super receiver to hear me on 80 meters (K4VFF). Can you believe it? I heard N4BP in SFL, but where was Mississippi? After working KH6, KL7, VY1, ND and SC (my personal bugaboo), to miss a sweep due to SFL and MS is a heart-breaker (AA4UJ). Forgot it was Sweepstakes time—happened to turn rig on and voila!... there was pandemonium on the air. Already had plans for the afternoon, but managed to put in a couple of 5-hour stints at the mike. (KA5NLY). Lots of fun for the OM/XYL team! (AA4UC). Was on low power for phone weekend. Never heard WTX until very late in the contest, when I heard WF5E on 21-MHz backscatter calling CQ. Called him for over 20 minutes every time he stood by, but couldn't hear me (W5ONL). My first phone SS contest. Great fun! Nice having a rare section and not having to compete with NTX and STX (WF5E). It was great to hear the 10-meter band sound like "old times." The "spots" do make a difference! (WB6NFO). Mahalo to my many VHF friends for working me on 10 meters. Aloha (KH6RS).



A view of the antenna farm at WMA club station W1NY.

## Affiliated Club Competition

	Score	Entries	CW Winner	Phone Winner		Score	Entries	CW Winner	Phone Winner
<b>Unlimited Category</b>					CDXA	377,772	3	N4ZC (WA8MAZ,op)	—
Murphy's Marauders	4,285,148	51	K1ZZ	W1WEF	Reading RC	364,958	5	K83F	K83F
<b>Medium Category</b>					Arkansas DX Assn	319,876	4	W9OBF	K5FUV
North Texas Contest Club	5,161,494	47	N5AU	N5AU	Northrop RC	313,018	9	K6HRT	K6HRT
Society of Midwest Contesters	4,251,020	50	K4VX (NU9R,op)	K4VX (NU9R,op)	Eastern Iowa DX Assn	307,216	4	W0EJ	W0EJ
Northern California Contest Club	4,094,378	43	WA7NIN (W6OAT,op)	N6BV	North Hills RC	303,594	4	K6SG	N6IG
Mad River Radio Club	2,864,622	28	K3LR	N8ATR	Western ARA	294,332	4	W6TCO	N6RJ
Minnesota Wireless Assn	2,732,938	28	K0DD (K0KX,op)	K0DD	Schaumburg ARC	277,976	4	K9LW	WA0AVL
Potomac Valley RC	2,665,412	39	W3LPL	W3LPL (K3ZZ,op)	Wichita ARC	263,840	3	W0AWP	N10S
Yankee Clipper Contest Club	1,679,810	30	K1TR	KA2AEV	Fox River Radio League	262,080	6	K9LUW	K9LUW
Texas DX Society	1,669,596	12	W5WMU (K5GA,op)	NR5M	Long Island Contest Club	251,484	3	KD2RD	KD2TT
Southern California Contest Club	1,498,682	16	K6NA	K6NA (N6TR,op)	Rockford ARA	249,270	5	K9LJN	K9H9
Utah Contest Club	1,105,278	12	W7CFL	K51G	Providence RA	243,792	3	WB9HRO	WB9HRO
South Jersey Radio Assn	782,930	29	K2YY	W2PAU	Four Lakes ARC	226,842	5	W8SJU	N8LL
Hoosier Contest Club	748,354	12	W9RE	W9RE	Northern Ohio ARS	222,302	3	WB8PHI,op)	—
Western Washington DX Club	675,522	12	N7TT	N7TT	Pennsylvania Wireless Assn	218,618	4	K3TX	K3TX
Motor City RC	604,408	38	K8SB	K8SB	Livinston AR Klub	199,510	9	KW8G	KW8G
Nashua (NH) Area RC	448,740	11	K8LT	K1HI	Northern New Mexico ARC	192,982	5	N5EPA	N5EPA
Central MI ARC	443,378	14	W8TJQ	K8GVK	Bolingbrook ARS	187,470	8	NA9I	N9FIV
Zygo ARC	348,036	13	W1ECH	WA1NLD	Unisys ARC Santa Clara	180,852	4	KJ6V	KJ6V
Highland ARA	271,216	14	NF8G	KJ8I	Redwood Empire DX Assn	178,522	5	K6LRN	K6LRN
<b>Local Category</b>					Hazel Park ARC	178,450	9	WB8ITB	WB8MDG
River City Contesters	1,643,670	10	N6IG	W6GO	Albany ARA	168,762	7	NW2J	NW2J
Salt City DX Assn	1,183,148	10	K2KIR	AJ3K	Western New York DX Assn	166,478	6	WB2ABD	WB2YQH
Rubber Circle Contest Club	1,171,030	10	W7WA	W7WA	Gloucester County ARC	159,606	6	K2HPV	N2ETJ
Overlook Mountain ARC	1,143,878	9	K5NA	K2UR	Rowan ARS	152,332	6	W8UT	KJ4TI
Kansas City DX Club	915,762	8	K8BG	N8CDH	Sturdy Memorial Hospital ARC	151,478	5	KD2SX/1	N1EHX
Albuquerque DX Assn	912,942	10	N6SO	W6SO	Rip Van Winkle ARS	147,960	5	W2DW	—
Central Arizona DX Assn	753,458	7	KY7M	K7NO	West Park Radio Ops	141,192	7	W8IDM	WB8AJF
Frankford Radio Club	722,096	9	W2GD	N2MM	Order of the Boiled Owls	134,592	3	K2SX	—
Grand Mesa Contesters	683,060	8	KJ0G	K0GAS	San Gabriel Valley RC	129,958	8	N6IBP	N6IBP
Willamette Valley DX Club	558,908	5	K7KJM	K7KJM	Valley RC of Eugene	124,608	5	K7DBV	A17W
Radio Club of Tacoma	524,908	7	W7BUN	W7BUN	Warminster ARC	123,858	9	KY3T	KA3QND
Rochester (NY) DX Assn	522,172	9	W2HPF	AF2K	Northern Arizona DX Assn	122,200	3	W7YS	—
Dixie DXers	516,540	8	K4BAI	K4BAI	Murgas ARC	121,282	5	KB3JK	WA1MKE
Suncoast ARC	472,364	4	K4XS	K4XS	Utica ARC	121,114	6	KK2B	KK2B
Central Virginia Contest Club	418,970	5	W4MYA	W4MYA	OH-KY-IN ARS	116,940	4	KF4AV	K14QJ
Long Island Mobile ARC	414,718	10	K2AU	WB2DIN	Dauberville DX Assn	114,414	6	KA3NJA	KA3NJA
Binghamton ARA	410,902	9	NE2W	NE2W	Burlington County RC	113,418	8	WB2UVB	WB2YOF
Colorado Contest Conspiracy	409,600	3	W0JR	W0JR (K0EU,op)	Delta DX Assn	111,908	4	NT5G	N5FYJ
					Rappahannock Valley RC	111,336	6	WB4LNT	WB4LNT
					Milre Bedford ARC	106,068	3	W1FM	W1FM
					Clark County ARC	91,582	8	—	N9AOJ
					Athens County ARC	91,318	5	—	NC8V
					Western Illinois ARC	84,770	4	N9JF	—
					Wheaton Community Radio	69,840	3	—	KR9K
					Amateur	25,550	3	K9KR	KA9JCP
					West Allis RAC	25,494	4	WB6ITM	WA6YAB
					Fresno ARC	24,616	3	W8FPA	W8FPA
					RAC of Greater Milwaukee				

"I-!-!" QRP, I'm gonna buy a kW (AA4Q). The Argonaut 515 worked flawlessly. Missed VE8 on both modes. Most common response to my exchange: "all again" (KD6PY). Really great to clean sweep on both modes with low power (W6UOF). Novice enhancement has really changed SS. 945 QSOs in 8½ hours on 28.4 (K6LL). Many thanks to all those who DID NOT dupe me!

(KSIG). Excellent 10-meter conditions. Thank you Novices and Technicians! (W7WA). Thanks to all the Novices for the 10-meter contacts and to all the CK 87s for their first SS participation (K7LXC). "ARRGGHH!!!" (N4SL). What a difference running Q class this year, versus B class last year. A humbling experience! But, will I do it again next year? You bet! (N8EIH). Somehow managed to

work KE7X in MT, 2-way QRP on phone... for a new one. I asked for a signal report and had to explain why—he said he was glad to do so, TNX (K9EIJ). Only my second clean sweep in 22 years of SS (W9JOO). All in all my best effort in years (W0IJR). This was my first time in the SS. If contests had mottoes, this one's would be "try it; you'll like it!" (VE5RC).

## Scores

CW scores are listed first, followed by phone. Within each call area, scores are listed by ARRL sections. Within each section, single-operator scores are listed first in descending numerical order, followed by multioperator scores. Each line score lists call sign, final score, number of QSOs, number of sections worked, hours operated and output power used (A = 150 watts or less, B = more than 150 watts, Q = 5 watts or less). Example: In Connecticut, K1ZZ worked 1064 stations in 75 sections for a final score of 159,600 points. He operated for 24 hours and used more than 150 watts.

CW		W1WEF	153,000-1020-75-24-B	W1GNR	105,228-711-74-23-B	WA1FCN	54,386-363-71-16-A	W1TKG	17,584-157-58
		K1CC	145,928-986-74-24-A	N1CC	98,604-673-74-20-A	KA1CV	54,166-371-73-20-Q	KA1MM	14,864-158-47
		K1RM	126,600-844-75-17-B	W1BIH	98,450-643-75-15-B	K1KI	49,680-380-69-12-B	KB1WR	10,388-98-53
1		NJ2L	119,140-805-74-24-B	KG1D	78,100-550-71-18-A	N8RA	46,800-350-67-16-B	WA1LVW	10,084-103-48
		W1AW (K8HVT,op)	118,540-801-74-16-B	K1YRP	69,552-483-72-13-A	WA1LJP	45,780-327-70-21-A	WA1STO	8,800-100-44
Connecticut			K1IN	67,988-472-72-12-B	K1TN	43,748-317-69-11-A	NF1U	8,868-111-39	
K1ZZ	159,600-1064-75-24-B	W1OD	117,364-793-74-22-A	KH8CP/1	67,104-466-72-24-Q	WB9IHH	42,420-303-70-8-A	NJ1V	5,402-73-37
K1TO	164,200-1028-75-24-B	W1ECH	111,016-761-73-22-A	WA1NLD	64,094-439-73-22-A	KA1MWX	38,592-289-67-18-A	W1KGF	5,148-78-33
K1XA	153,624-1038-74-24-B	AA2Z	106,856-722-74-21-B	W1ACR	62,338-439-71-20-B	K1BV	32,940-270-81-8-B	WB1DQT	4,292-74-29
		K1DW	108,128-733-72-21-A	N4XR	60,088-406-74-11-B	K8HVT	20,000-200-50-4-B	WB4FDT	416-16-13

## Eastern Massachusetts

WB1CNM	97,384	858-74-24-B
WB1Y	88,882	826-71-23-B
WB1KEE	68,872	463-72-23-A
WB1M	59,250	375-67-11-A
NK1O	47,328	348-69-10-A
K1NTR	39,168	288-69-10-A
KM1G	37,210	305-61-18-A
W1AX	36,210	255-71-6-B
K1A1OR	35,508	89-69-18-A
W1A1PP	34,404	282-61-16-Q
K1SEC	33,884	288-59-7-A
NB1B	32,706	237-69-11-B
K1UCA	31,989	216-74-23-B
N1DC	31,488	248-64-17-A
KQ1F	30,192	222-68-10-A
N1AU	25,254	207-61-12-A
N1AJJ	22,078	178-62-12-A
K1A1CLV	21,080	170-62-15-A
KB1VL	20,976	184-57-12-A
KC1EL	19,764	162-61-12-A
KZ1L	19,536	148-68-12-Q
WABSWM	18,972	153-62-6-B
KO1O	13,716	127-54-5-A
K1XM	11,092	118-47-2-B
W1SR	9,400	100-47-6-A
K1A1GEP	8,800	100-44-6-A
W1PLJ	5,236	77-34-9-B
K2PNK	2,800	50-28-5-A

## Maine

KX1E	70,886	529-67-22-A
K1A1OR	48,718	329-71-24-B
W2ERT/1	38,760	285-68-13-A
K1A1ZX	10,094	103-49-7-A

## New Hampshire

K1TR	134,384	908-74-22-B
W1PH	116,778	793-73-24-A
N1ELN	85,894	589-73-24-A
KBLT	70,290	495-71-19-A
K1KE	44,448	313-71-12-A
KC1F	41,980	323-65-11-A
W1M1ZV	33,356	294-65-11-B
N1JH	33,020	254-65-11-A
K1A1NXT	15,974	183-49-14-B
K2TE	9,328	108-44-3-A
W1UN	7,614	81-47-7-A
K1A1LMR	4,032	58-36-8-Q
AC1J	2,184	39-28-2-A
K1M (+K1OSM)	34,688	271-64-14-A

## Rhode Island

KD2SX/1	124,468	841-74-23-B
KM1X	115,588	781-74-23-B
K1IU	46,242	387-63-7-B
K1V5J	37,118	277-67-11-A
K9SB/1	29,008	258-56-9-B
K8IM/1	19,840	180-62-9-A
W1A1HYN	9,450	135-35-4-B
W1RFO	7,938	83-63-8-A
K2MN	3,584	56-32-24-A
N1JPM	480	20-12-4-A

## Vermont

NB1GQR	126,980	907-70-24-B
N3SOH	57,400	410-70-17-A
WB1A	58,840	406-70-19-A
K1K	8,668	101-34-3-A

## Western Massachusetts

Z1M	100,196	877-74-24-A
K1W	89,640	476-70-22-Q
K1FR	24,808	211-59-8-B
W1XH	5,354	54-33-8-Q
W1P	850	25-13-2-A
K1KPH (+N1C1B,NM1K)	69,904	514-68-18-B

## 2

## Eastern New York

GN1A	150,526	1031-73-24-B
N2XL	133,052	899-74-23-B
Z1UR	114,256	772-74-22-B
U2Q	109,816	742-74-24-B
NA2STM	108,848	742-72-22-A
J2AZS	87,188	614-71-22-A
N2DW	61,904	424-73-12-A
J2HIF	57,800	425-68-16-A
J2HA	49,270	379-65-18-A
JW2J	34,348	277-62-10-B
W2D	32,512	254-64-18-A
U2Y	32,128	251-64-13-A
N2Q	29,768	244-61-9-A
J2FJZ	28,844	217-66-18-A
WB2FOB	23,072	206-66-13-A
A2MYJ	18,816	147-64-11-A
V2NRD	18,974	123-69-14-A
VA2CJY	3,348	62-27-3-A
A2MZJ	2,800	50-26-24-A

## IYC-Long Island

D2RD	122,396	827-74-24-B
2A1U	117,822	807-73-23-B
A2AEV	117,150	781-75-23-B
2BX	117,068	791-74-22-B
A2C1W	40,320	315-64-15-A
2VGM	37,788	282-67-9-A
V2GKZ	29,280	225-65-12-B
2VKTf	20,740	170-81-5-A
V2X5	18,924	166-57-6-A
WB2OU	14,012	113-82-5-A
V2AYJ	13,144	124-53-7-B
V2GGE	4,380	73-30-2-B
V2DX	3,000	50-30-2-A

## Northern New Jersey

W2RQ	162,800	1084-75-24-B
K2ZS	153,150	1021-75-24-B
W2GD	143,850	959-75-24-A
KY2P	128,780	870-74-24-A
K2DJ	104,400	725-72-24-Q
A2UJ	77,818	533-73-24-Q
KY2H	68,448	496-69-21-A
K2YH	45,540	330-69-20-A
K3BN	38,000	320-65-18-A
W2HCA	34,036	254-67-15-A
K7D	29,820	220-68-11-A
K2JT	28,340	222-60-8-Q
W2TI	28,334	209-63-10-A
N2HDY	11,500	115-90-10-A
W2HN	10,658	74-72-12-A
W2A2UDT	8,800	100-44-4-A
W2JEK	2,378	41-29-3-Q
W2NPT	2,300	50-23-15-A
WABCOA	380	15-12-4-B

## Southern New Jersey

N2MM	122,700	818-75-22-A
K2YY	118,570	835-71-24-B
AB2E	98,718	683-73-24-B
W2ALBT	63,648	468-68-22-A
W2PAU	55,522	391-71-15-B
WB2SJA	48,818	361-69-22-A
K2HPV	47,704	358-67-14-Q
W2EA	38,144	298-64-18-A
N2P	33,728	272-62-15-B
WB2UVB	27,612	234-59-12-A
WB2UEY	20,618	189-61-13-A
NX2C	18,444	158-58-11-A
W3ELJ	14,300	130-55-11-A
N2EZ	13,688	134-51-10-A
N2GUW	10,904	116-47-16-A
WB2DIN	6,806	83-41-24-B
K2TD	6,860	80-37-3-A
N2GDW	4,278	69-31-8-A
W2ARCB	3,894	59-33-5-Q
N2TV	80	8-5-5-Q
K2CQX	12	3-2-1-A

## Western New York

K2K1R	141,636	957-74-23-B
K2ZJ	123,580	835-74-24-A
KQ2K	118,368	822-72-24-B
W2HPF	67,090	665-73-18-B
NM2L	65,400	610-70-15-B
W2RJ	78,548	538-73-21-B
W2FR	72,416	498-73-17-A
N2ZW	67,864	498-69-18-A
N2MF	61,770	435-71-11-A
WB2ABD	54,020	365-74-13-A
W2EYA	43,160	332-65-17-A
N2GU	41,616	308-68-14-A
K2UC	39,188	288-68-15-A
WB2YQH	28,800	200-72-11-A
KE2C	25,960	220-56-24-A
NM2JF	23,668	194-61-13-B
W2TZ	21,692	187-58-4-A
W2ASON	19,440	162-60-17-A
A2S	17,138	128-68-14-Q
K2GB	9,200	100-46-7-A
W2OMV	4,820	70-33-5-A
W2AGY	4,536	63-38-4-A
K2KU	1,684	32-28-2-A
N2AQ	852	28-17-1-A
WB2PSI (K2MP,K2DM,K2CP,N2BM, W2AV,W2a6,DH5,ZKD,QON,WB2KAO, WBVU,ops)	110,400	736-75-24-B
W2OW (N2HR,NB1N,ops)	94,200	628-75-20-B

## 3

## Delaware

K3WUW	118,990	815-73-23-B
KQ3G	48,416	358-68-16-B

## Eastern Pennsylvania

K3F	109,480	782-70-23-B
K3CM	98,112	598-72-21-A
W3ALD	81,848	587-72-21-A
N2EY	77,816	548-71-22-A
K3TX	73,220	523-70-24-B
K3WW	63,072	432-73-21-Q
W9NXX	57,312	398-72-13-B
N6CQ3	56,942	401-71-12-B
W3FW	43,920	360-61-11-A
K3KW	40,738	304-67-11-A
KY3T	37,310	287-65-18-A
WB3ESR	34,180	280-61-15-A
W3ARITY	33,978	274-62-21-A
KB3JK	29,646	243-61-13-B
KY3M	26,904	228-58-12-B
KU3A	23,180	190-61-9-A
KR3I	23,084	199-58-9-A
NJ3N	18,032	184-49-24-A
NJ3J	17,324	142-61-18-A
W3ADE	14,280	140-51-8-A
KB3GL	9,400	100-47-9-A
K3IPK	8,736	104-42-2-A
WB3JOM	7,400	100-37-12-A
N3CZB	5,418	63-43-8-A
A3Q	4,998	51-48-8-B
WB3KPE	2,350	47-25-4-A
K3AQND	750	25-15-1-A
AG3G	112	8-7-1-A
K3A3JA	24	4-3-3-A

## Maryland-DC

WB3PL	164,688	1128-73-24-B
K3NA	153,180	1035-74-24-B
K3ZZ	134,828	911-74-24-B
K3SA	60,000	400-75-10-B
W3AZ	58,220	410-71-18-B
W3UW	55,510	427-65-15-B
WB2EKK	44,472	327-68-10-A

W3GG	34,800	300-58-4-B
W3DYA	34,180	280-61-20-A
W3GH	33,138	283-62-10-B
K3HPG	30,848	341-64-7-A
W3JRJ	28,426	323-81-9-A
KG3Z	23,520	198-80-17-A
W3EE	19,980	185-54-10-A
K3ZO	15,000	150-50-2-B
W3MCCQ	11,374	121-47-7-Q
K3TKS	10,584	108-49-14-Q
N3GB	6,830	85-38-4-B
W3QFE	2,700	45-30-4-B

## Western Pennsylvania

K3LR	179,250	1195-75-24-B
K5ZD3	160,728	1086-74-24-B
W3WC	51,840	380-72-21-A
W3HDH	45,156	318-71-8-B
N3ZZ	44,808	328-68-13-A
K3AGXP	22,144	173-64-9-A
W3SUJ	1,224	36-17-7-A
K3UJA (+W3FSB)	23,880	199-60-3-B

## 4

## Alabama

WZ4F	154,800	1032-75-24-B
W4NTI	45,260	310-73-19-A
Georgia		
M4RJ	170,700	1138-75-24-B
K4BAI	135,300	902-75-24-B
A4AGA	84,658	572-74-24-A
KB4GID	41,208	303-68-21-Q
W4AQL (N4QX,ops)		
K4AS	29,618	251-58-16-A
A4ALR	27,382	214-84-20-Q
N4DJ	25,298	204-82-19-A
N4UJ	24,180	189-65-24-A
N4LZ	16,074	141-57-24-B
N8LM (+K3HLB,W0MH3,WB4SPB)	121,104	841-72-24-B

## Kentucky

WM4T (KUBE,ops)	148,824	1013-74-24-B
N4TY	148,148	1001-73-24-B
N4XM	109,792	752-73-24-B
WB4PRU	68,550	657-75-17-B
W4AFOT	68,184	604-73-24-A
N1WR	72,938	514-71-22-A
K4OGW	35,400	295-60-13-A
KF4AV	13,208	127-62-4-A
A4ARX	6,080	80-38-3-Q

## North Carolina

K4PQL	154,200	1028-75-24-B
N4ZC (WABMA,ops)		
145,188	981-74-24-B	
AA4NC	113,184	788-72-18-B
N4AA	87,454	599-73-18-A
WB5M	53,300	410-65-18-A
W8UT	46,728	354-66-16-B
NK4Q	38,502	279-69-20-Q
N4MPQ	15,840	144-55-12-A
KB4RLZ	50	5-5-3-A

## Northern Florida

N4WW (KBLU,ops)	174,150	1161-75-24-B
N4EEB	153,920	1040-74-24-B
NX4N	138,046	951-73-19-B
K4XS	127,904	874-73-24-A
K4VY (N4EVS,ops)		
70,956	488-73-17-A	
KD1RU	53,958	391-69-18-A
W4UJ	39,400	300-66-19-A
W4WQ	39,204	287-65-15-B
W4VQ	29,770	229-65-11-Q
W4ASSB	2,540	44-30-1-A
N4MNU	8	2-2-23-A
W4IE (+K4ATCW)	100,500	870-75-18-B

## South Carolina

K8EJ	109,964	743-74-23-A
W4BTZ	101,550	677-75-22-B
K4ADI	30,998	246-63-11-A
Southern Florida		
	154,088	1041-74-24-B
N4BP	78,384	552-71-24-A
WD4AHZ	42,748	319-67-19-A
A4ARO	35,328	256-69-16-A
N4GV	27,594	219-63-11-B
KO4D	10,200	100-51-9-A
W4YN	7,120	89-40-3-A
WB9OEP/4	1,276	29-22-3-A
N4BP		
WV5Z (+N5KRQ)	11,368	116-49-8-A

WRIG	5,818- 53-53-10-A
W8BZ	510- 17-15- 2-A
<b>San Diego</b>	
K6NA	170,100-1134-75-24-B
N8CU	148,800- 982-75-24-B
N8ND	140,700- 938-75-24-B
N8UCF	125,100- 834-75-24-A
N8W	122,932- 842-75-24-A
N8AYW	53,064- 586-67-23-A
K8ZH	90,256- 349-72-16-Q
W8MWW	45,126- 327-89-20-A
W8JXA	28,480- 210-83-10-Q
W8QX	25,986- 213-61-19-Q
AA8EE	24,704- 193-64- 7-A
<b>San Francisco</b>	
W8JTI	110,550- 737-75-24-A
K8LRN	43,746- 317-69-12-B
K8BVX	28,910- 245-59-14-B
W8LXY	11,550- 105-55- 5-A
W8ZCHO/S	980- 16-12- 2-A
W8BIP (+K1A)	103,650- 691-75-21-B
<b>San Joaquin Valley</b>	
K8BWW	104,068- 713-73-19-A
W8FTM	14,364- 133-54-12-Q
W8B7B	2,940- 49-30- 5-A
<b>Sacramento Valley</b>	
N8G	184,250-1095-75-24-B
W8GO (K8EST,op)	
N8GG	157,060-1047-75-24-B
K8VH	143,850- 958-75-24-B
N8J	121,362- 843-72-24-B
N8J	111,150- 741-75-23-B
K8SG	107,152- 724-74-22-B
N8GG	90,752- 674-74-20-A
W8NKR	46,844- 338-69-12-B
K8BPB	40,896- 288-71-20-A
W8EGX	38,640- 280-69-11-A
<b>7</b>	
<b>Alaska</b>	
AL7CQ	117,216- 614-72-24-B
NL7BP	74,314- 509-73- 9-B
AL7BK	18,040- 164-55-16-B
NL7DU	9,840- 120-41-18-Q
<b>Arizona</b>	
K8LL	175,350-1189-75-24-B
K8Y7M	152,884-1033-74-23-B
K7NO	132,900- 888-75-23-B
N7CIX	106,500- 775-70-21-A
W7YS	61,488- 427-72-20-A
N7CPL	61,488- 431-71-21-A
W7GFT	52,380- 395-68-18-B
N7GS	39,712- 292-68-12-A
W7ZMD	37,620- 285-68-12-A
N7A	21,000- 175-80- 2-A
<b>Idaho</b>	
K7QD	146,146-1001-73-22-B
N7HJM	107,004- 725-74-24-A
W7EX	57,400- 410-70-18-A
K7KA	20,882- 183-57- 7-Q
W7QDM	6,840- 63-40- 2-A
<b>Montana</b>	
K8T	125,856- 674-72-24-B
K8YX	120,394- 624-73-24-A
K8P7P	105,998- 726-73-24-A
K8V	80,098- 602-74-20-A
W7WWS (SM8DRD,op)	
N7GCC	86,544- 601-72-20-B
N7C	3,108- 42-37-11-A
W7LR	2,914- 47-31- 2-A
<b>Nevada</b>	
W7NIN (W8OAT,op)	
N7FP	179,228-1211-74-24-B
N7C7K	152,400-1016-75-24-A
K8Y7	97,500- 660-75-23-A
N7D7M	58,032- 412-68-23-Q
N7W8	40,108- 271-74-17-Q
N7W8	29,818- 251-59-19-A
<b>Oregon</b>	
W7NI (N8TR,op)	
A17B	177,008-1198-74-24-B
AG7M	171,364-1158-74-24-B
W7YAG	167,560-1117-75-24-B
K7KJM	121,950- 813-75-24-A
K7WPC	101,470- 865-73-23-A
W7WHY	38,272- 299-64-18-A
K7DBV	32,290- 269-60-15-B
N7DQ	20,928- 228-64-12-Q
A17W	20,180- 140-72-14-B
N8TW	3,980- 58-30- 7-A
K7OLK	1,840- 40-22- 4-A
782	23-17-16-Q
<b>Utah</b>	
W7CFL	126,700- 858-75-24-B
W7ZHS	25,240- 205-64-18-A
K7CU	13,932- 129-54- 8-A
K7WA	2,968- 53-28- 3-Q
W7MR (+K8ZST,N7JH,W8E7B,D)	
W7EDU (AF8A,N8ARD,W8BWT,ops)	
108,116- 717-74-24-B	
<b>Washington</b>	
N7WA	172,350-1149-75-24-B
N7TT	147,300- 982-75-24-B
K7RG	143,550- 957-75-24-B
K7WA	95,338- 653-73-24-A
W7RJK	94,754- 649-73-15-A
W7BUN	86,632- 637-68-17-B
N4SL	66,256- 474-72-18-A
W7LKG	60,492- 428-71-17-B

N7ETC	50,282- 381-66-19-A
N7DM	34,440- 246-70-15-Q
K7SS	30,552- 228-67- 9-Q
W7IEU	28,688- 211-68-18-B
W7BPI	25,218- 197-84- 7-A
W7GB	24,400- 200-61- 6-B
W7KJ	22,448- 184-01-14-Q
N8HU7	21,594- 177-61-13-A
W7BYK	17,284- 149-58- 9-A
N7EPD	10,904- 118-47- 5-A
K7TG	9,698- 101-48- 2-A
W7QCN	7,740- 88-45- 7-A
W7QCC	6,474- 83-39- 6-A
K7QGB	672- 21-19- 5-A
N7JB	264- 12-11- 1-A
K7UD	12- 3- 2- 2-A
K7LED (K8PQJ,K7CSE,N7NW,WA7UVJ,ops)	
82,224- 571-72-24-A	
<b>Wyoming</b>	
K7MM	102,300- 682-75-20-A
W7CM	95,588- 724-66-18-B
N7GVV	48,980- 340-72-19-A
K7QVY	35,108- 262-67-14-A
K7ZV	10,848- 113-48-11-A
N7CO	10,300- 103-50- 9-A
W7CS	4,940- 65-38-14-B
<b>8</b>	
<b>Michigan</b>	
N8EO	82,140- 555-74-24-A
W8YJQ	81,468- 558-73-21-B
W8VPC	78,804- 582-71-22-A
N8JX	78,520- 560-71-23-A
K8SB	76,900- 550-68-22-A
K8RDU	67,734- 471-71-24-A
K8WB	58,140- 401-70-25-A
K8SIA	55,056- 388-71-11-A
W8SIB	54,180- 430-63-18-A
W8VEB	48,990- 355-69-19-A
N8EA	47,302- 359-67-24-A
K8CC	43,420- 334-65- 5-B
K8SAK	41,942- 313-67-20-A
K8NS	36,200- 275-64- 9-B
W8EGJ	31,890- 245-64-12-A
N8CQA	30,796- 226-68-17-Q
K8CV	28,080- 239-60-19-A
W8SQR	25,530- 185-69-20-A
W8BAAX	22,788- 211-54-19-Q
W8YFY	20,130- 183-55-11-A
K8VDX	18,644- 158-59-15-A
W8MSK	18,012- 158-57-10-A
K8DD	16,740- 155-54- 6-Q
W8BMDG	15,778- 161-49-14-A
K8GOM	13,668- 134-51-13-A
N8HSN	12,400- 155-40-23-A
W8URM	10,000- 100-50- 4-A
W8WVY	9,120- 120-36- 6-Q
K8IZE	5,996- 71-38-18-A
N8QWV	3,328- 52-32-12-A
W8SS	2,538- 47-27- 5-A
W8FRD	2,500- 50-25-12-A
W8PVI	2,436- 42-29- 8-A
K8GVK	1,880- 40-21- 2-A
W8WVU	528- 22-12-24-A
K8EX	178- 11- 8-1-A
W8QY	96- 6- 6-3-A
W8BIFD	70- 7- 5-3-A
N8SF	50- 5- 5-6-A
N8YH	18- 3- 3-3-A
K8ACM (+K8JM,K8BPOW,N8IXN,N8SL,N8L,W8QJ,W8JNF)	
162,504-1098-74-24-B	
<b>Ohio</b>	
W8BXE	158,288-1056-74-24-B
K8AZ (K8NZ,op)	
155,400-1050-74-24-B	
W8FN	147,752-1012-73-24-B
K8ND	117,822- 807-73-24-A
K8GM	117,434- 827-71-24-A
W8SJU (W8BPHI,op)	
94,998- 699-71-24-B	
K8JT	90,082- 617-73-20-B
W8UPH	85,484- 602-71-24-A
K8BETK	70,856- 512-69-21-A
W8PN	60,112- 442-68-20-A
K1FR	54,400- 400-68-10-A
N8CV	48,852- 354-69-10-B
W8IDM	48,580- 335-68-19-Q
W8BTKM	41,400- 300-69-18-A
N8G	32,588- 236-69-23-A
N8W4	30,810- 237-65-12-A
N8CSL (K8MR,op)	
26,032- 219-64- 8-B	
W8EAR	27,000- 225-60-12-A
W8GOC	25,740- 195-68- 5-A
K8BL	22,000- 200-55- 5-A
N8Q8	10,980- 122-45- 9-Q
W8SAJF	9,800- 100-49-10-A
W8PMJ	7,392- 84-44- 3-A
K8ZRH	6,536- 80-38- 7-A
N8FU	5,180- 88-50- 5-A
K8MR	1,784- 42-21- 2-A
W8VZE	374- 17-11- 2-A
W8EDU (AF8A,N8ARD,W8BWT,ops)	
108,982- 743-72-24-B	
W8SMC (K8BVG,N8HBI,N8CQ,N8RC,WB8S MRU, CVC,W8BPGW,ops)	
82,040- 586-70-24-B	
<b>West Virginia</b>	
W4NW8	87,898- 619-71-15-A
K8B7F	48,990- 345-71- 8-B
K8BG	43,014- 321-67- 8-Q
W8DL	36,408- 246-74-16-Q

W8JWX	27,648- 216-64-24-Q
K8JH	200- 10-10- 1-A
<b>9</b>	
<b>Illinois</b>	
AG8A	146,568- 991-74-24-B
K8KM	146,372- 989-74-24-B
AC8C	140,452- 949-74-24-B
W8BJK	123,078- 843-73-24-B
K8SO	122,700- 818-75-24-B
N8AEJ	114,968- 777-74-24-B
K8ZO	113,400- 756-75-24-A
K8IUI	108,076- 737-74-24-A
K8LJN	107,894- 739-73-24-B
K8WA	103,078- 708-73-24-A
K8CT	100,048- 678-74-24-A
N8TR	81,848- 587-72-23-A
N8AJ	79,820- 555-72-13-B
K8BG	74,738- 619-72-13-B
K8HDE	73,872- 619-72-17-B
N8NA	71,820- 613-70-18-A
W8LNO	67,680- 470-72-18-A
K8LIU	67,568- 462-73-21-A
N8JF	64,844- 451-72-20-A
K8JU	61,320- 438-70-21-Q
N8JC	57,816- 398-73-21-Q
W8VA	56,090- 385-71-11-A
K8SB	52,640- 376-70-16-A
K8B	50,370- 365-69-17-Q
W8ZTK	43,884- 328-67-13-A
W8AXL	39,884- 302-68-12-A
K8LV	38,848- 293-68-10-Q
W8TBU	37,840- 271-70-19-Q
K8RR	35,750- 275-65-19-A
W8HBI	33,012- 262-63-11-A
K8IFO	32,388- 259-68-24-Q
K8PFW	32,016- 232-69-11-A
K8VCW	29,512- 217-68-11-A
K8ML	28,258- 199-71-10-A
W8EBY	27,580- 197-70-19-A
K8IMX	25,200- 200-63-24-A
W8ZEN	22,688- 199-57-12-A
W8KV	21,594- 177-61-10-A
W8REC	18,090- 135-67-14-A
K8GZ	17,160- 158-55- 9-Q
K8CC	16,940- 154-55- 5-A
K8EJ	16,838- 141-59-12-Q
W8L	14,040- 138-52- 6-A
N8AI	11,040- 120-46-24-A
N8DX	10,178- 96-53- 9-Q
K8YV	7,380- 90-41- 5-A
W8TM	5,504- 88-32- 3-A
N8MC	4,218- 57-37- 9-A
W8AGM	2,800- 50-28- 3-A
W8RW	874- 23-19- 1-B
W8BAVL (+N8CXQ)	
83,878- 643-73-23-B	
AF8M (+K8A9 GLZ,VPH,K8BL,N8AI,NC8F,W8JL,W8BGRZ)	
55,338- 401-69-24-A	
NC8D (+K8A9 VAB,ZKJ,K8DKJ,K8BOE,NG8QJ,N8AI,N8JW,WC8Y)	
31,034- 263-59-10-B	
<b>Indiana</b>	
W8RE	161,400-1078-75-24-B
K8RS	145,562- 897-73-24-B
N8NO	124,848- 867-72-23-B
K8MD	114,464- 784-73-23-B
W8JOO	66,400- 475-72-24-A
AJ8C	63,616- 448-71-12-A
N8ACD	59,618- 432-69-17-A
K8HCX	16,588- 143-58- 6-B
AD7U	8,342- 97-43- 5-Q
N8NB	2,700- 50-27- 1-B
N8NC	1,000- 25-20- 1-B
K8JD (+W8BYV,K8GV)	
106,900- 710-75-14-B	
W8YB (K8MR,W8BPI,ops)	
69,276- 502-69-24-B	
<b>Wisconsin</b>	
W8XT (W8AD,op)	
142,800- 952-75-24-B	
W8AIH9 (K8FVF,op)	
137,850- 919-75-24-B	
N8U	113,550- 757-75-24-B
N8U	98,842- 677-73-22-A
K8BS	95,424- 672-71-18-B
W8LIU	85,260- 609-70-24-A
W8NA	82,928- 588-73-15-A
K8OSH	70,290- 495-71-20-B
W8HRO	69,264- 481-72-21-Q
W8HE	66,598- 469-71-15-A
N8BC	57,218- 427-67-12-B
K8Q9	49,420- 363-70-13-A
K1TMM	42,344- 316-67-15-A
N8GL	42,228- 306-69-12-A
N8IC	39,072- 296-64-14-A
K8KR	25,440- 212-80-15-B
N8EZ	24,396- 214-57- 8-A
N8KS	23,664- 174-68-10-A
N8GM	23,600- 200-59-15-Q
W8OYG	18,312- 132-58-13-A
W8FPA	14,580- 140-52- 9-A
N8CQ	12,168- 117-52- 3-A
W8GVT	5,778- 78-37-15-A
N8EAX	3,366- 51-33- 7-A
K8FT	2,295- 41-28- 7-A
W8BZIO	2,240- 40-28- 7-B
K8JW	1,190- 35-17- 1-A
<b>10</b>	
<b>Colorado</b>	
W8UA	163,374-1119-73-24-B

K8OD	148,068-1021-73-24-B
K8XU	144,152- 874-74-24-A
W8JR	125,800- 850-74-24-A
AC8S	109,584- 781-72-20-B
N8IC	107,856- 749-72-24-Q
K8JG	104,340- 705-74-22-B
W8CP	104,192- 704-74-18-B
K8MIC	104,180- 704-70-22-B
W8XE	103,500- 690-75-24-A
K8ZCR	89,432- 592-73-23-B
K8RIP	89,840- 576



Maine			Southern New Jersey			Kentucky			Mississippi			New Mexico			North Texas			NYC-Long Island			Pacific			Santa Barbara			Santa Clara Valley																																																																																																																																																																																																																																																																																																																																																																																																																																																																																																																																																																																																																																																																																																																																																																																																																																												
K1XZ	14,150	807-75-21-B	N2MM	148,950	979-75-24-B	W3UJ	62,140	555-74-19-A	W3ZZ	53,544	388-69-6-B	N4NNZ	12,272	118-52-9-A	K8RLN	12,272	118-52-9-A	K9SH	18,140	1025-75-21-B	K9SH	18,140	1025-75-21-B	K1XZ	14,150	807-75-21-B	K1XZ	14,150	807-75-21-B	K1XZ	14,150	807-75-21-B	K1XZ	14,150	807-75-21-B	K1XZ	14,150	807-75-21-B	K1XZ	14,150	807-75-21-B	K1XZ	14,150	807-75-21-B	K1XZ	14,150	807-75-21-B	K1XZ	14,150	807-75-21-B	K1XZ	14,150	807-75-21-B	K1XZ	14,150	807-75-21-B	K1XZ	14,150	807-75-21-B	K1XZ	14,150	807-75-21-B	K1XZ	14,150	807-75-21-B	K1XZ	14,150	807-75-21-B	K1XZ	14,150	807-75-21-B	K1XZ	14,150	807-75-21-B	K1XZ	14,150	807-75-21-B	K1XZ	14,150	807-75-21-B	K1XZ	14,150	807-75-21-B	K1XZ	14,150	807-75-21-B	K1XZ	14,150	807-75-21-B	K1XZ	14,150	807-75-21-B	K1XZ	14,150	807-75-21-B	K1XZ	14,150	807-75-21-B	K1XZ	14,150	807-75-21-B	K1XZ	14,150	807-75-21-B	K1XZ	14,150	807-75-21-B	K1XZ	14,150	807-75-21-B	K1XZ	14,150	807-75-21-B	K1XZ	14,150	807-75-21-B	K1XZ	14,150	807-75-21-B	K1XZ	14,150	807-75-21-B	K1XZ	14,150	807-75-21-B	K1XZ	14,150	807-75-21-B	K1XZ	14,150	807-75-21-B	K1XZ	14,150	807-75-21-B	K1XZ	14,150	807-75-21-B	K1XZ	14,150	807-75-21-B	K1XZ	14,150	807-75-21-B	K1XZ	14,150	807-75-21-B	K1XZ	14,150	807-75-21-B	K1XZ	14,150	807-75-21-B	K1XZ	14,150	807-75-21-B	K1XZ	14,150	807-75-21-B	K1XZ	14,150	807-75-21-B	K1XZ	14,150	807-75-21-B	K1XZ	14,150	807-75-21-B	K1XZ	14,150	807-75-21-B	K1XZ	14,150	807-75-21-B	K1XZ	14,150	807-75-21-B	K1XZ	14,150	807-75-21-B	K1XZ	14,150	807-75-21-B	K1XZ	14,150	807-75-21-B	K1XZ	14,150	807-75-21-B	K1XZ	14,150	807-75-21-B	K1XZ	14,150	807-75-21-B	K1XZ	14,150	807-75-21-B	K1XZ	14,150	807-75-21-B	K1XZ	14,150	807-75-21-B	K1XZ	14,150	807-75-21-B	K1XZ	14,150	807-75-21-B	K1XZ	14,150	807-75-21-B	K1XZ	14,150	807-75-21-B	K1XZ	14,150	807-75-21-B	K1XZ	14,150	807-75-21-B	K1XZ	14,150	807-75-21-B	K1XZ	14,150	807-75-21-B	K1XZ	14,150	807-75-21-B	K1XZ	14,150	807-75-21-B	K1XZ	14,150	807-75-21-B	K1XZ	14,150	807-75-21-B	K1XZ	14,150	807-75-21-B	K1XZ	14,150	807-75-21-B	K1XZ	14,150	807-75-21-B	K1XZ	14,150	807-75-21-B	K1XZ	14,150	807-75-21-B	K1XZ	14,150	807-75-21-B	K1XZ	14,150	807-75-21-B	K1XZ	14,150	807-75-21-B	K1XZ	14,150	807-75-21-B	K1XZ	14,150	807-75-21-B	K1XZ	14,150	807-75-21-B	K1XZ	14,150	807-75-21-B	K1XZ	14,150	807-75-21-B	K1XZ	14,150	807-75-21-B	K1XZ	14,150	807-75-21-B	K1XZ	14,150	807-75-21-B	K1XZ	14,150	807-75-21-B	K1XZ	14,150	807-75-21-B	K1XZ	14,150	807-75-21-B	K1XZ	14,150	807-75-21-B	K1XZ	14,150	807-75-21-B	K1XZ	14,150	807-75-21-B	K1XZ	14,150	807-75-21-B	K1XZ	14,150	807-75-21-B	K1XZ	14,150	807-75-21-B	K1XZ	14,150	807-75-21-B	K1XZ	14,150	807-75-21-B	K1XZ	14,150	807-75-21-B	K1XZ	14,150	807-75-21-B	K1XZ	14,150	807-75-21-B	K1XZ	14,150	807-75-21-B	K1XZ	14,150	807-75-21-B	K1XZ	14,150	807-75-21-B	K1XZ	14,150	807-75-21-B	K1XZ	14,150	807-75-21-B	K1XZ	14,150	807-75-21-B	K1XZ	14,150	807-75-21-B	K1XZ	14,150	807-75-21-B	K1XZ	14,150	807-75-21-B	K1XZ	14,150	807-75-21-B	K1XZ	14,150	807-75-21-B	K1XZ	14,150	807-75-21-B	K1XZ	14,150	807-75-21-B	K1XZ	14,150	807-75-21-B	K1XZ	14,150	807-75-21-B	K1XZ	14,150	807-75-21-B	K1XZ	14,150	807-75-21-B	K1XZ	14,150	807-75-21-B	K1XZ	14,150	807-75-21-B	K1XZ	14,150	807-75-21-B	K1XZ	14,150	807-75-21-B	K1XZ	14,150	807-75-21-B	K1XZ	14,150	807-75-21-B	K1XZ	14,150	807-75-21-B	K1XZ	14,150	807-75-21-B	K1XZ	14,150	807-75-21-B	K1XZ	14,150	807-75-21-B	K1XZ	14,150	807-75-21-B	K1XZ	14,150	807-75-21-B	K1XZ	14,150	807-75-21-B	K1XZ	14,150	807-75-21-B	K1XZ	14,150	807-75-21-B	K1XZ	14,150	807-75-21-B	K1XZ	14,150	807-75-21-B	K1XZ	14,150	807-75-21-B	K1XZ	14,150	807-75-21-B	K1XZ	14,150	807-75-21-B	K1XZ	14,150	807-75-21-B	K1XZ	14,150	807-75-21-B	K1XZ	14,150	807-75-21-B	K1XZ	14,150	807-75-21-B	K1XZ	14,150	807-75-21-B	K1XZ	14,150	807-75-21-B	K1XZ	14,150	807-75-21-B	K1XZ	14,150	807-75-21-B	K1XZ	14,150	807-75-21-B	K1XZ	14,150	807-75-21-B	K1XZ	14,150	807-75-21-B	K1XZ	14,150	807-75-21-B	K1XZ	14,150	807-75-21-B	K1XZ	14,150	807-75-21-B	K1XZ	14,150	807-75-21-B	K1XZ	14,150	807-75-21-B	K1XZ	14,150	807-75-21-B	K1XZ	14,150	807-75-21-B	K1XZ	14,150	807-75-21-B	K1XZ	14,150	807-75-21-B	K1XZ	14,150	807-75-21-B	K1XZ	14,150	807-75-21-B	K1XZ	14,150	807-75-21-B	K1XZ	14,150	807-75-21-B	K1XZ	14,150	807-75-21-B	K1XZ	14,150	807-75-21-B	K1XZ	14,150	807-75-21-B	K1XZ	14,150	807-75-21-B	K1XZ	14,150	807-75-21-B	K1XZ	14,150	807-75-21-B	K1XZ	14,150	807-75-21-B	K1XZ	14,150	807-75-21-B	K1XZ	14,150	807-75-21-B	K1XZ	14,150	807-75-21-B	K1XZ	14,150	807-75-21-B	K1XZ	14,150	807-75-21-B	K1XZ	14,150	807-75-21-B	K1XZ	14,150	807-75-21-B	K1XZ	14,150	807-75-21-B	K1XZ	14,150	807-75-21-B	K1XZ	14,150	807-75-21-B	K1XZ	14,150	807-75-21-B	K1XZ	14,150	807-75-21-B	K1XZ	14,150	807-75-21-B	K1XZ	14,150	807-75-21-B	K1XZ	14,150	807-75-21-B	K1XZ	14,150	807-75-21-B	K1XZ	14,150	807-75-21-B	K1XZ	14,150	807-75-21-B	K1XZ	14,150	807-75-21-B	K1XZ	14,150	807-75-21-B	K1XZ	14,150	807-75-21-B	K1XZ	14,150	807-75-21-B	K1XZ	14,150	807-75-21-B	K1XZ	14,150	807-75-21-B	K1XZ	14,150	807-75-21-B	K1XZ	14,150	807-75-21-B	K1XZ	14,150	807-75-21-B	K1XZ	14,150	807-75-21-B	K1XZ	14,150	807-75-21-B	K1XZ	14,150	807-75-21-B	K1XZ	14,150	807-75-21-B	K1XZ	14,150	807-75-21-B	K1XZ	14,150	807-75-21-B	K1XZ	14,150	807-75-21-B	K1XZ	14,150	807-75-21-B	K1XZ	14,150	807-75-21-B	K1XZ	14,150	807-75-21-B	K1XZ	14,150	807-75-21-B	K1XZ	14,150	807-75-21-B	K1XZ	14,150	807-75-21-B	K1XZ	14,150	807-75-21-B	K1XZ	14,150	807-75-21-B	K1XZ	14,150	807-75-21-B	K1XZ	14,150	807-75-21-B	K1XZ	14,150	807-75-21-B	K1XZ	14,150	807-75-21-B	K1XZ	14,150	807-75-21-B	K1XZ	14,150	807-75-21-B	K1XZ	14,150	807-75-21-B	K1XZ	14,150	807-75-21-B	K1XZ	14,150	807-75-21-B	K1XZ	14,150	807-75-21-B	K1XZ	14,150	807-75-21-B	K1XZ	14,150	807-75-21-B	K1XZ	14,150	807-75-21-B	K1XZ	14,150	807-75-21-B	K1XZ	14,150	807-75-21-B	K1XZ	14,150	807-75-21-B	K1XZ	14,150	807-75-21-B	K1XZ	14,150	807-75-21-B	K1XZ	14,150	807-75-21-B	K1XZ	14,150	807-75-21-B	K1XZ	14,150	807-75-21-B	K1XZ	14,150	807-75-21-B	K1XZ	14,150	807-75-21-B	K1XZ	14,150	807-75-21-B	K1XZ	14,150	807-75-21-B	K1XZ	14,150	807-75-21-B	K1XZ	14,150	807-75-21-B	K1XZ	14,150	807-75-21-B	K1XZ	14,150	807-75-21-B	K1XZ	14,150	807-75-21-B	K1XZ	14,150	807-75-21-B	K1XZ	14,150	807-75-21-B	K1XZ	14,150	807-75-21-B	K1XZ	14,150	807-75-21-B	K1XZ	14,150	807-75-21-B	K1XZ	14,150	807-75-21-B	K1XZ	14,150	807-75-21-B	K1XZ	14,150	807-75-21-B	K1XZ	14,150	807-75-21-B	K1XZ	14,150	807-75-21-B	K1XZ	14,150	807-75-21-B	K1XZ	14,150	807-75-21-B	K1XZ	14,150	807-75-21-B	K1XZ	14,150	807-75-21-B	K1XZ	14,150	807-75-21-B	K1XZ	14,150	807-75-21-B	K1XZ	14,150	807-75-21-B	K1XZ	14,150	807-75-21-B	K1XZ	14,150	807-75-21-B	K1XZ	14,150	807-75-21-B	K1XZ	14,150	807-75-21-B	K1XZ	14,150	807-75-21-B	K1XZ	14,150	807-75-21-B	K1XZ	14,150	807-75-21-B	K1XZ	14,150	807-75-21-B	K1XZ	14,150	807-75-21-B	K1XZ	14,150	807-75-21-B	K1XZ	14,150	807-75-21-B	K1XZ	14,150	807-75-21-B	K1XZ	14,150	807-75-2

