

Results, 1978 September VHF Contest

From the "fabled Northeast" to Pike's Peak to Guam, mediocre conditions couldn't stop the enthusiasm this year.

By Tom Frenaye,* K1KI

Ho hum! Another September VHF Contest is over. Was it as dull as usual? Well, not quite. The usual complaints about September conditions were there, and in greater numbers since the increasing sunspot levels were supposed to help out on 6 meters at least. And, the usual numbers records were broken.

So, where was the action? The recent single-operator king of the West Coast (N6NB) decided to do battle from the Northeast and nearly pulled off another top score. Last year's top multioperator group (W2SZ) was cooked by the microwave equipment from W1FC. Some very interesting DX entries even came through and the intense competition this year produced more than a normal level of complaints.

First, some of the numbers. A total of 338 entries was received, not much different from the total last year. Thirteen new division records were set, up from last year's 10. Both multioperator and single-operator records were set in the Atlantic, Dakota and Southwestern Divisions. Three records from before 1970 were topped. The 14-year-old multiop record of W0DK/0 from the Rocky Mountain Division was more than doubled by the N0KV group from the top of Pike's Peak, and the 1966 Midwest Division multiop record set by the W0LB group was almost

tripled by K0TLM and crew. Eastern Pennsylvania provided the new Atlantic Division single-operator record score of WA3AXV, which topped K3IPM's 1969 effort. The contest family at K5CM more than tripled the old West Gulf Division multioperator record.

Average scores were well up over last year. The smallest score in the top ten single-operator listings is more than 9000 points higher, and the number 10 multioperator score is more than 17,000 points above the 1977 scores. This seems to accurately display the growth in vhf/uhf activity especially on 430 and 1215 MHz reported by many participants.

A look at the top ten scores nationwide shows nothing but W1s, W2s and W3s making it in the single-operator category, while the W4BFB/4 group and W8VP managed to invade the multioperator top ten list. Those west of Ohio are hurt by the lack of numbers and sections to be worked.

A listing of the top five scores west of the Mississippi should give some recognition to those a bit handicapped: Single operator — W6YKM, N6TX, W6XJ, N6CT, WB6NMT; Multioperator — WB6KBZ, K6KLY/6, K5CM, WA6EJO, K6MEP. Of course, those in Wyoming or New Mexico probably will always have to be satisfied in other ways.

The big multioperator battle was between W2SZ/1 and W1FC this year. The W1FC mob showed the group from RPI

that just having gear from 50 to 1215 MHz isn't enough anymore. Couple that with a hefty edge in 2-meter contacts and the W2SZ multiplier total just didn't make it. The WA2RIU-WA2SNA battle for third was close but RIU's edge in contacts made up for SNA's edge in multipliers.

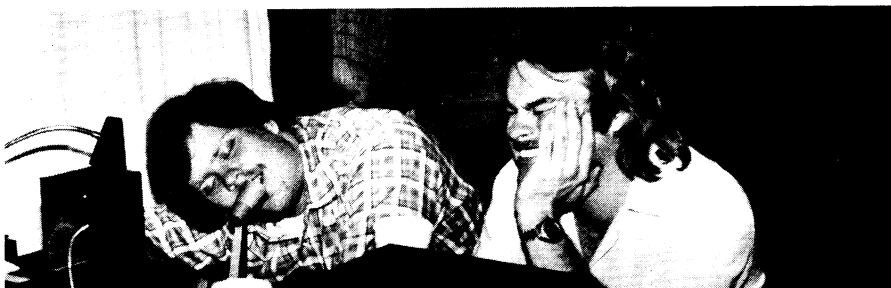
The single-operator battle between K1FO and N6NB/1 was a classic. Put together K1FO's years of experience from his New England lowland QTH and N6NB's Vermont mountaintop location and West Coast contesting background and the stage was set for a rough battle. Add to that lost luggage, 4-1/2 hours of lost operating time, freezing temperatures in Vermont and the cozy, familiar operating position in Connecticut, and K1FO was smiling. The difference was the 220/430-MHz contacts for the most part. N6NB is making no excuses, however, and is planning to have at it again from the "fabled Northeast."

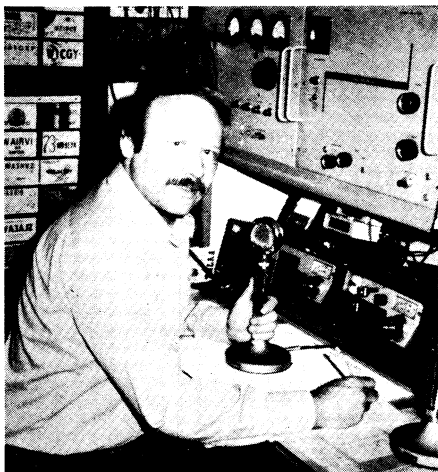
The lack of lengthy 6-meter openings in the continental U.S. didn't seem to discourage KG6JIH (N6AJ). From his Guam QTH he managed a staggering 358 6-meter QSOs, including such catches as Hong Kong, Australia, and Papua New Guinea in addition to 348 contacts with Japan. Not too bad when you consider Japan is 1450 miles away! The log from PA0XMA showed 96 European contacts and eight multipliers but the contest rules say those outside of the ARRL sections can only count QSOs with stations in

*Asst. Communications Manager, ARRL

Top Ten			
Single Operator		Multioperator	
K1FO	45,676	W1FC/1	88,740
N6NB/1	44,226	W2SZ/1	77,441
WA3AXV	43,128	WA2RIU	62,720
W3HMU	24,310	WA2SNA	56,924
W2EIF	23,205	W3AD	50,281
K2CBA	23,100	W4BFB/4	46,480
WA2DPU	22,272	K3LZ	40,032
N3AHI	22,072	K2GE	38,055
WA1NGR/3	21,417	W1XM	36,010
W1JR	21,056	W8VP	33,123

WB4CHZ (left) and WB4OUT, doing a little 6-meter action at 3 A.M. on Sunday. George and Dave were with the WB4LHD/5 multiop expedition to Arkansas.





WA3AXV, the number 3 single operator in the 1978 September VHF QSO Party.

Division Leaders

Single Operator

Call	Score
*WA3AXV	43,128
*K9KFR	20,351
*K0CJ	1,392
*WB4JGG	9,456
WA8OGS	9,560
K2CBA	23,100
WB0ZXU	3,456
*K1FO	45,676
WA7KYZ	1,649
W6YKM	12,635
WA2FGK/8	8,077
WA7KYM	308
*WA4FBH	5,670
W6XJ	6,335
WB5WJT	806
VE3BQN	12,054
JE1HYR	1

*Indicates new division record.

Division

Atlantic
Central
Dakota
Delta
Great Lakes
Hudson
Midwest
New England
Northwestern
Pacific
Roanoke
Rocky Mtn
Southeastern
Southwestern
West Gulf
Canadian
DX

Multioperator

Call	Score
*W3AD	50,281
W9NWE	26,910
*K0VXM	6,222
WB4LHD/5	5,022
W8VP	33,123
WA2RIU	62,720
*K0TLM	3,799
W1FC/1	88,740
K7MM/7	155
*WB6KBZ/6	31,995
W4BFB/4	46,480
*N0KV	2,325
*W4VO	15,121
WA6EJO	9,900
*K5CM	18,630
VE3AEA/3	2,373
K4GFG/C8	124

ARRL sections, thus his score of zero with eight multipliers. Any enthusiasm out there for a rule change?

Now for the problems. More than the normal number of complaints were received this year, and warnings have gone out to a few. The most abused rule seems to be the one transmitter per band rule, with several stations claiming to have heard others on both 2-meter fm and ssb at the same time. A few single-operator stations were noted transmitting on more than one band at once — another no-no. The fm versus no-fm debate still appears to be raging, but the compromise four-hour limit on .52 and limited simplex frequencies seem to be the best solution for the time being.

A number of complaints also pointed to stations not using portable i-ds. If you are out of the call area your call sign indicates, you must sign portable (K1KI portable in ENY must sign K1KI/2 but when portable in VT, just K1KI is sufficient).

Another problem that gives fits to those checking the logs is the multioperator station that works every operator at the station on 2 meters or works one of its members on 10 GHz in the next state. Is it fair to count QSOs with your own operators? Some logs show a 15-20 QSO or several multiplier increase in the score. What say on this one? Comments appreciated.

While on the subject of problems, logging and the associated paperwork with submitting a valid vhf contest entry come to mind very quickly. A few tips to help overcome this obstacle are in order: First, log contacts in UTC, not local time. Makes it easier on us and easier when going back in your own log for QSLing purposes. Next, duplicate contacts left in the log are a surefire way to some heavy-duty score reduction. Remember, you can only work a station *once* per band, regardless of mode used. And finally, in logging the contact for contest purposes, be sure to

supply all the needed information for each and every contact: date, time (in UTC), freq./band, call sign of station worked, and the *complete* exchange required for a valid contest contact. The paperwork might be a drag, but a top-notch contest score very rarely results from a sloppy, incomplete entry.

That about puts the wraps on another September VHF QSO Party report. If you liked it, tell us so. If you didn't like it, let us know that, too. We are always looking for ways to improve our reporting, but we don't know if you don't tell us.

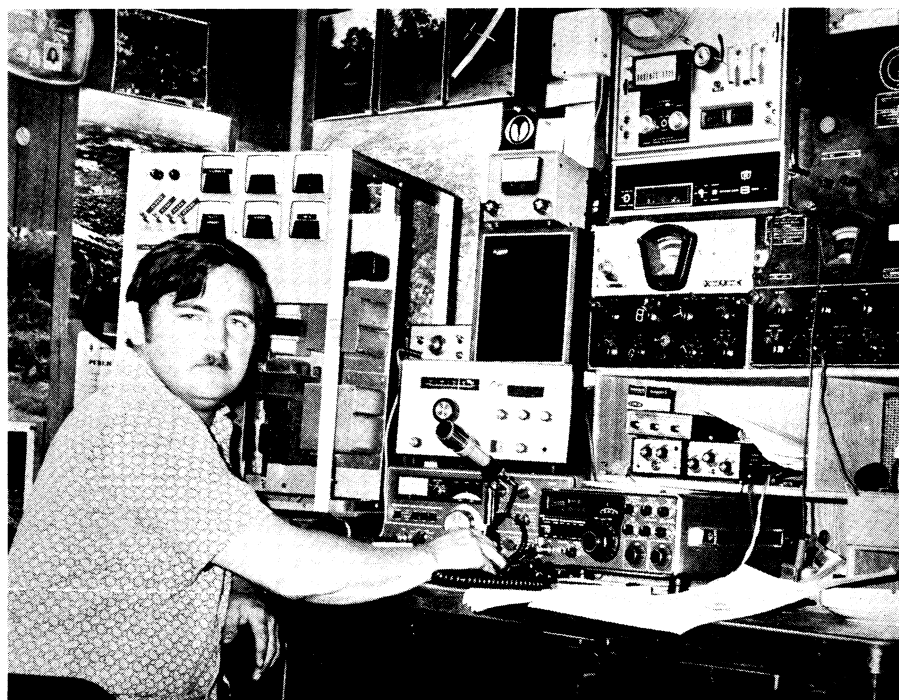
CU in the January VHF SS.

Soapbox

Steve and I planned to operate from Mt. Equinox in Vermont. Neither Steve nor I had ever operated in a contest before

and we thought that Vermont would be a needed state for the fellows in the NY-NJ metro area. Boy, were we surprised. After driving for over four hours from NJ, we climbed Mt. Equinox and spotted a 2-meter beam above the motel on the top of the mountain. We later learned that K1BF, Bart, was also going to operate in the contest from the mountain. Bart, Steve and I (WB2CZB) agreed that one station would be operated near 144 MHz and the other station would be operated higher up, about 144.200 MHz or so to minimize QRM. It looked as though we could work it out. Just before the contest started, N6NB, Wayne, arrived atop the mountain, all the way from California. Could three stations operate the contest, separated by only several thousand yards? You bet we did. Bart operated mostly cw

The number 1 single operator from the Western Pennsylvania Section, WA3CPH.



QSO Leaders

Multioperator

50 MHz	144 MHz	220 MHz	430 MHz	1215 MHz
W2SZ/1 258	W4BFB/4 556	WA2RIU 144	W2SZ/1 101	WB6KBZ 14
W3AD 256	W1FC 532	K6KLY/6 90	WA2FUZ 69	W1XM 13
WA1LUJ 240	K6KLY/6 356	WB6KBZ 82	K2GE 64	W1FC 13
W1FC 212	WB6KBZ 351	K6MEP 75	W1XM 62	WA2RIU 11
WA2SNA 201	K2GE 347	K3LZ 67	WA2SNA 60	K6KLY/6 10

Single Operator

KG6JIH 358	WB2WIK 467	W6NXB 51	K2RIW 94	N6TX 17
N6NB/1 196	K9KFR 273	WA3AXV 51	K2UYH 92	K2UYH 16
WA8OGS 178	K1FO 266	WB6FTW 49	K8WW 72	W1JR 10
K2CBA 156	W9IP 237	W2EIF 46	K1FO 70	WA3JUF 9
W9OEH 141	VE3BQN 233	W3HMU 40	WA3AXV 69	WA6GYD 9
				W6XN 9

at the low end of 2. Steve and I operated ssb above 144.150. And Wayne operated the other bands as much as possible, using 2 when our station was off the air. We were all able to operate with a minimum of QRM to each other. (WB2CZB/1) We checked 6 meters constantly. Even took the rig to the beach with us, but no Es. Very disappointing! (K4GFG/C6) Activity on 6 meters for the contest seemed rather low. Scatter conditions were excellent from this area, supplying many needed multipliers. (WB8IW/4) Until this contest, I have pretty well had the band to myself here in Ottawa. But, VE3ASO moved to town just before the contest and now talk about QRM! I can appreciate what it must be like in the NLI-NJ-EPA area. (VE3FN) Very disappointed in conditions. Two meters produced beautiful contacts into the NYC area. When will the 6-meter boys smarten up and leave 50.1-50.125 for cw operations? Tremendous signals on 432 from VE3-land. 220 MHz stunk. (WA2FGK/8) It may sound a little bit weird, but would like to see "altitude kilowatts" appropriately handicapped. A system similar to the one used by the FCC to figure repeater output power would work just fine. I would not propose to regulate erp based on altitude, but only to regulate in-

put power, so as not to penalize an ingenious antenna system. TGFTOFTT means Thank God For Tropo On Four Thirty-Two. (KB4BT) Getting the score that we had is all the more remarkable considering that the site was shut down for a few hours because of tornado warnings. However, as soon as the winds died down, the crew remanned the site rather than shutting down permanently. No Delaware Section again. I make a motion that if we don't work them next time, that Delaware be canceled for lack of interest. (W3GNR) These signal reports on ssb are guesses only. I think we should drop the "S" meter readings in these contests and use only "Q" readability. (K9ZNK/8) Can't ever remember working so many Vermont stations as in this contest. (K1FO) Finally made my goal of 50 QSOs on 432. (W1JR) While our lowly 16 points may sound like we weren't trying, my wife, WB7OSC and I have concluded that working a vhf contest from a rural area, away from major populated areas, is just about hopeless. We were somewhat limited in that we only had 2-meter fm, but we did borrow an amplifier. It might be interesting to note that we worked only one active contest station (W7DG) and all seven others were just passing by the frequency or dragged away from the re-

peaters. I called and called until I was blue in the face, but nobody answered those calls. We also left the rig on 146.55 all night, while we slept, but nothing was heard. See, I told you it's dead around here on vhf! (WA7PTM) After operating 6, 2 and 220 during vhf contests from southern Ontario, it was sure different up here in northern Ontario. Every contact had to be earned. I was disappointed with the number of sections worked, but pleasantly surprised by the number of stations worked, helped a great deal by the fm activity from Sault Ste. Marie, some 160 km (100 miles) away. Highlight of the contest was a successful sked with K0MQS in Delta, IA, 957 km (595 miles). I've worked him three times in as many weeks, but there was no inversion this time. (VE3EMS) I always thought 432 MHz was a hard band to get on and even harder to make a contact on. With the help of W2AZL, WA2DPU and WB2IFC, I was able to get on 432 for the contest with a borrowed rig. What a surprise, I worked 10 states and 12 sections in the contest. Best DX was W1FC in New Hampshire about 250 miles away. (WB4NXY/2) Many violations of the rule requiring "no transmitting of two modes on the same band at the same time" were noted. (WB2RJL) WA4GPM, watch out — next June, I'm going to be number 1 in Virginia. (N4CD) Never turned on the 5894 amplifier and still snagged 13 sections on 3 watts of cw on 144 MHz. (WA2ANZ) Generally a poor contest. . . . Just like last year. The whole contest period sounded like an extended version of the Sunday morning tropo sessions that we used to have from Wisconsin to pick up those East Coast sections. Lots of tantalizing signals, but nothing lasting long enough to work, save a few very short openings. (W0RIB)

Update

The log from VE2DFO was delayed due to Canadian postal problems: 11,001-178-57-ABD.

QST-

QSO Leaders

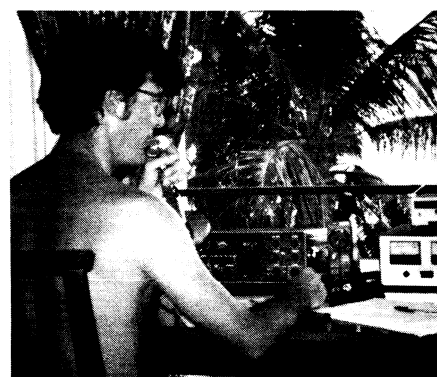
Multioperator

50 MHz	144 MHz	220 MHz	430 MHz	1215 MHz
W9NWE 31	W3GNR/3 23	W2SZ/1 17	W2SZ/1 21	W2SZ/1 7
W3AD 30	W2SZ/1 23	K3LZ 14	WA2FUZ 19	W1FC 7
WA1LUJ 28	W3AD 22	WA2SNA 13	K2BWR 19	W1XM 6
W8CCI 28	VE2DFO 22	WA2RIU 13	WA2SNA 18	WB6KBZ 4
K5CM 27	W2OW 21	W1FC/1 11	K3LZ 16	K6KLY/6 4
	K3LZ 21	W3AD 11		

Single Operator

WB8IW/4 34	WB2WIK 23	N6NB/1 13	K2RIW 21	K2UYH 9
WA8OGS 31	W2AV 23	K1FO 12	K2UYH 21	WA3JUF 7
WA4FBH 31	N6NB/1 22	W3HMU 11	W3OZ 20	K2CBA 6
WB4JGG 30	K1FO 22	WA3AXV 11	K2LGJ 19	K1FO 6
W9OEH 30	VE3FN 21	W3GPY 11	K8WW 18	W1JR 6
	VE3UH 21		W3HMU 18	
			WA3AXV 18	

If there was a competition for the best scenery in the September vhf bash, WB4KGY operating the multiop station, K4GFG/C6, would have won, palms down.



Scores are listed in order, single-operator stations first within each section. From left to right: call, score, number of QSOs, number of multipliers, bands operated (A-50 MHz, B-144 MHz, C-220 MHz, D-430 MHz, E-1215 MHz, F-2304 MHz, G-3300 MHz, H-5 GHz, I-10 GHz).

U.S.A.

1

Connecticut

K1FO 45,676-483-76-ABCD E
K1EM 6758-218-31-AB
K1TX 5264-159-28-BCD
W1AZNT 4588-148-31-AB
W9KDR/1 3906-115-31-ABD
W1ACVN 2525-101-25-AB
K1ZZ 1530-83-18-BC
K1AUB 1120-80-14-B
W1WHL 1104-69-16-A
W1JA 1014-78-13-B
K1JL 663-47-13-BC
W1FAJ 585-37-13-BC
K1JD 432-36-12-B
K1KI 396-33-12-A
W1LUBD 363-33-11-B
W1LOU 207-23-9-B
W1FAU 161-18-7-BD
W1LJLW(K1ZKR,W1S
HYN LMZ 27,144-458-58-ABCD

Eastern Massachusetts

W1JR 21,056-237-64-ABCD E
W1GXT 5728-132-32-BCD
K1GVM 4805-122-31-ABD
W1CRL 1848-67-24-ABD
W1BIFK 1751-89-17-BD
W1FOD 1140-60-19-AB
K1MHC 351-39-9-B
W1JOT 124-16-4-BDE
W1BFX 108-15-6-BD
W1XOM(K1MK,N1RC,W1XG,
W1BCQR 36,010-443-65-ABCD E

Maine

K1TOL 3380-130-26-A
W1AAAF/(+K1JO,W1AKNL)
3450-123-31-ABD
K1CZ(+K1TMJ,K1BFFK,
W1JAS) 1260-63-20-AB

New Hampshire

W1EJ 15,174-228-54-ABCD E
W1F5Z 10,481-193-47-ABCD E
AC1J 421-31-ABD
W1ISM 520-40-13-B
W1FCI(+W1S CF KX L MC IBX
DUW DVC,K1S KAC RX EA
VR JZS POC 3450-123-31-ABD
W1S ZSF ZPA FSZ ZTC AMU,
N1S AAP BC)
W1BICAG(K1JIZ,W1AUSU,W1S
FGV FGW,opr) 442-34-13-AB

Rhode Island

W4AMMP/1 3190-110-29-AB
W1BAT(K8BGZ,opr)
W1APBR 2210-130-17-B
W1ACSO 1665-111-15-B
W1OH(+K1GNW,K1ABT)
4292-148-29-AB

Vermont

N6NB/1 44,226-454-81-ABCD E
K1LPS/1 4644-101-36-ABD
W1A1M 4212-105-36-ABD
K1GVT 810-27-15-AB
W1EXZ 810-27-15-AB
W1B2CBZ/(+W1B2ZJH)
4218-222-19-B
K1COW/1(+W1B1DR)
4080-134-30-ABD
W1B1FT(+W1S BZR CNE)
550-46-11-BD

Western Massachusetts

K1JX 1395-93-15-B
W1LUOL 819-53-16-AB
K1TK 392-56-7-B
K1LG 204-17-12-B
W2S2/1(W1A1S HCO UGE,W1BCBH,
K2TR,N2FU,W2CN,W2S FKS
SPL,WB2S BXP GPF PKO,
W2AUSA,opr) 77,441-676-91-ABCD E
W1NY(AC1T,K1BE,K1APR,
W1KK,W1A1S CYK ECR RWU,
W1B1CAC,opr) 25,704-459-56-ABCD
W1AKT(+W1A1S UWX WRK WRM)
3120-130-24-AB

2

Eastern New York

K2CBA(WB2DNE,opr)
23,100-270-70-ABCD E
K2OY 9576-207-42-ABC
K25HB 2548-98-26-AB
W2ANZ 819-53-16-AB
W2IP 31-9-11-B
W2P2V(+K2WF,K2APE,
WB2MJS,opr) 14,688-271-48-ABCD E
W2FPE(+K2AKS,K2QE,W2S
FPG QGN YGE,W2FPL)
2495-96-26-AB

New York City - Long Island

K2RIW 3948-94-21-D
W2SLY 2260-113-21-B
W2DZD 627-51-11-BC
W2EUS 374-30-11-BD
W2FVZ(+W2YF)
18,200-281-52-ABD
K2OV5(Multiop)
7272-202-36-AB

Northern New Jersey

WB2WIK 10,741-467-23-B
WB2WIH 4760-170-28-AB
WB2CUT 3971-209-19-B
WB2NCF 3015-201-15-B
WB2IZC 2205-147-15-B
W2AQT 1216-64-19-B
WB2TFH 680-40-17-AB
WB2CHE 660-55-12-B
W2ARIU(+K2KJ,W2EY)
62,720-680-70-ABCD E
W2SNA(K2BJG,N2AAZ,W2IHM,
W2UPK,WB2S ARS JCP JUO LBP
LHG QEA QOQ,opr) 56,924-636-76-ABCD E
K2GE(K2S FD KFE KZ MS YSR
ZGF KA2AVV,N2AAR,W2J DH
TIN,W2S CHN GUM NXK OJH
TGA,WB2S BUR DRZ MSQ NXK
ONA PLU SNN UYX,K2BZV,opr) 38,055-557-59-ABCD

Southern New Jersey

W2EIF 23,205-257-65-ABCD E
W2DPU 22,722-322-58-ABCD E
W2AKOK 11,270-204-46-ABCD
WB4NXY/2 10,350-197-46-ABD
K2UYH 7080-108-30-DE
W3CV/2 6200-108-40-ABCD E
W2PAU 5740-164-35-ABC
WB2YHE 4440-134-30-ABC
W2HFX 532-48-14-B
K2BWR(+K2RJ) 18,147-200-69-ABCD
W2DKB(+WB2S JGQ MIC VVW)
7320-156-41-ABD

Western New York

K2YCO 8924-158-46-ABCD E
W2AV 3059-133-23-B
K2LGJ 2356-62-19-D
K2EJVJ 1794-56-23-ADE
W2BPE 1404-78-18-AB
K2KGE 1014-78-13-B
N2JY 988-76-13-AB
W2AWX 750-50-15-AB
W2WGL 720-45-16-B
K2TJ 671-58-11-BD
K2OEQ 560-53-10-ABD
W2MQP 116-58-2-B
W2OW(WA2K ZOC,N2HR,
W2S BSN IKO RXY THS WYQ,
WB2S GXX SGJ,opr) 15,870-332-46-ABC
W2RJL(+W2AGM,WB2S IEY
K1J) 11,000-286-38-ABD
W2ZJF(K2RKW,K2AS AJV
AJW,W2Z RQC,WB2S FBP NFB
MY YMY ZMC) 5760-290-40-ABD
W2ZKJ(+W2S AV HYI,W2S
EWU VCM,WB2S FKY KAO,
W2BRL 17378-198-34-ABCD
W2DUC/2(+N2AFR,W2BDPT)
2982-142-21-AB

Delaware

K3SXA 5220-139-29-ABCD
W3BDP 1456-91-15-B
AC3T 114-12-6-BC
W3CGV 100-10-5-D

Eastern Pennsylvania

W3AXV 43,128-479-72-ABCD
W3HMU 24,310-268-65-ABCD E
N3AHI 22,072-313-62-ABD
W3JUF 17,800-176-80-BCD E
W3VJU 5365-185-29-AB
WB2RBG/3 4224-132-32-AB
W3IT 3484-109-26-ABC
K3LUV 3392-71-32-ABCD E
N3ET 3200-160-20-B
W3CLQ 2755-145-19-B
W3ETB 1785-113-25-ABC
W3CL 1547-64-17-ABC
K3KEL 1350-75-18-B
W3ETR 988-52-19-B
W3GPY 528-24-11-C
A3W 510-30-17-B
WB3FTD 120-24-5-B
W3FMF 80-16-5-AB
W3AD(K2NE,KB3AR,N3S EG RT,
W3S RKM WUL,WB3S CTL CTU,
opr) 50,281-587-77-ABCD
K3LZ(+WB2YEH,K3UU,W3S
KPP LBI NAY PUL TUL WAK
ZFDU) 40,032-449-72-ABCD
W3LD(W3S GFN JUJ,W3JXW,
opr) 5082-154-33-AB

Maryland - D.C.

W1NGR/3 21,417-296-59-ABCD
W3XO 17,576-298-52-ABD
K3HCE 14,112-255-48-ABD
W3OZ 3320-83-20-D
W4NVW/3 1997-103-18-ABC
W3HQX 1495-115-13-B
K3AKR 882-45-18-ABD
W3MSN 390-38-10-ABC
W3BOL 60-20-3-B
W3PGA/3(K3S CWZ FRX PHH ROJ
YZY,N3IT,W3S JDF VRD,W3S
FHV HZJ,AW OTZ QKB,WB3S
ACE BGS BIT,opr) 14,688-271-48-ABCD E
WB3DPN(+W3ANQJ)
3384-141-24-AB

Western Pennsylvania

W3CPH 2550-150-17-B
WB3CBB 2373-113-21-A
W3BWU 1240-62-20-AB
W3GNR/3(+K3S PS TFL,W3INK,
W3S BUX FFC GQU FFN,WB3S
DCZ DDA DFR,opr) 21,106-419-57-ABD
W3KWH(K3RYA,W3S ION SVJ
TVB,W3FVJ,WB3S BRY EHQ,
opr) 5973-181-33-AB

4

Alabama

W4NPL 1760-80-22-AB
W4ACQG 975-53-15-BD
KA4AOK(+KA4CFZ)
112-14-8-AB

Georgia

W4AFBH 5670-135-42-AB
N4QH 1410-93-15-AB
W4JZ 60-20-3-AB
AK4T 40-20-2-B
W4VQ(K4CKS,W4AKPU,WB4S
AEG REX YWK,opr) 15,121-295-48-ABCD
WD4IIS(+W4B4NMA)
6690-210-30-ABD

Kentucky

W4API 5510-145-29-BCD
WB4PUV 4200-210-20-AB
W4SMU 1020-99-10-BD

North Carolina

W4AGBE 832-45-16-ABC
W4BFB/4(AA4S SC ZZ,A14A,K4S
BF LVV SE SLC,NA4FY,W4AVCC,
W4S FDU ND8 PCS TLX,WD4S
ABZ LMM ODM,opr) 46,480-776-56-ABCD
K4BHT(+N4S SM YN,WD4S AAY
MCH) 5200-178-31-ABCD
W4GG/4(W4S ACY AKU ANM MR,
W4MYQ,opr) 1092-71-13-ABC
W4WZQ/4(+K4YBS,W4WZP,
WB4S HIE UDS,WD4S GQU HBU)
980-28-28-ABCD

Northern Florida

W4LYS 448-56-8-B
W4NVV 400-40-11-AB
W4CSS 372-26-12-ABD
W4EQR 315-28-9-BD

South Carolina

WB8IWI/4 4046-119-34-A
K4GMJ 750-50-15-AB
WB4FEV 500-50-10-AB
WB4NBK 200-25-8-AB
N4KJ(+W4FVW,W4AJWC,
WB4JWR,W4DBUH)
1008-88-16-AB

Tennessee

WB4JGG 9456-185-48-ABD

Virginia

N4CD 5850-189-30-ABCD
WD4MUO 5016-216-22-BD
W4GPM 4698-124-29-BD
K4LHB 3588-120-26-BC
W4DFK 3468-165-1-B
W4SBC 3025-95-25-AB
W3IY/4 2160-108-20-AB
K4J5I 132-6-12-B
W4MHQ 988-57-13-ABD
K4FJW 616-44-14-AB
WB2JAY/4 60-10-3-C
K4EJQ(+AA4OQ,W4ATC,W4S
BGS CBX DFS KMG OFF QYK,
WD4S AGO MBK,opr) 13,332-275-44-ABCD
K3ZJ/4(+WD4S QGW RBZ)
1615-95-17-AB

5

Arkansas

WB5JAR 444-37-12-AB
W2QV1/5 270-30-9-AB
WB4LHD/5(+WB4S CHZ NWE OVT,
WD4JHD,W4S BHS UMP)
5022-54-31-ABD
N5DL(+WD5S CAN CAP CLR,
N9ACI) 1900-95-20-AB

Louisiana

K4CHE/5 312-26-12-AB
WB5LBT 266-33-7-BD

Mississippi

W5UCY 441-39-9-BD
W4QDX/5 198-22-9-B

Northern Texas

K5GMX 516-43-12-AB
WB5KTC 384-47-8-ABD

Oklahoma

K5CM(+K5S MWH SW,N5KW,
WB5HLR)18,630-312-54-ABD

Southern Texas

WB5WJT 806-53-13-ABD
WB5UER 432-61-6-BD

6

East Bay

N6AMG 1150-115-10-AB
K6KLY/6(+W6AGJUD)
267,738-596-38-ABCD E

Los Angeles

WB6OKK 2760-138-20-AB
W6GGV 1596-68-21-ABD
W6HXD 639-71-9-B
W6NKB 408-51-4-C
W6CN 342-6-8-B
K6PHE 116-29-4-A
N6YB 110-15-5-BC
W6FE 116-12-8-B
WB6TAM(WB6S WDS BJS CGF
DRI,opr) 2299-150-11-ABC

Orange

W6PMX 1664-128-13-AB
WB6MFV 198-22-9-AB

Santa Barbara

W6HDO 792-26-8-BD
W6EJO(+W6OAL,WB6IMM,
WB6KMO) 9900-219-33-ABCD E
K6MEP(+K6VMN,W6S FFX IJZ,
WB6EDA) 8096-285-22-ABCD
K6HXW(+W6AWTH)
5632-146-32-ABCD

Santa Clara Valley

N6TX 10,980-206-36-ABCD E
W6GYD 3960-142-22-ABCD E
W6N 3610-121-19-BCD E
K6SLQ(K6MO,opr)
150-17-6-BCD
WB6KBZ(+K6GSS,W6S HCI TJOF)
31,995-561-45-ABCD E

San Diego

W6XJ 6335-172-35-ABD
WB6NMT 4864-127-32-ABCD
WB6FTW/6 3840-191-16-ABD

San Francisco

N6CT 5903-207-26-ABD

San Joaquin Valley

W6YKM 12,635-301-35-ABCD E
W6ALA 490-49-10-B
W6DPP 120-10-10-ABC
N6PR 102-17-6-B
N7EU/6(+K6B6K,W6S OEF RAK,
WB6QYM,W6DGVZ)
759-69-11-AB

Guam

KG6JIH 2154-359-6-AB

Hawaii

KH6BZF 1-1-1-B

7

Arizona

WB8PBC/7 1-1-1-B

Idaho

KB7AQ/7 216-24-9-AB
K7MM(+KA7AGR,WB7S RNW WBZ
WIA) 155-31-5-AB

Montana

WB7CLS/7 10-10-1-B

Nevada

N7AKB(+K7ICW)
684-56-12-ABD

Oregon

W7TYR 540-49-9-ABCD E
K7HSJ 432-40-8-ABCD
N7DB 144-13-8-ABCD
WB7OSC(+W7PTM)
16-8-2-B

Washington

W7KYZ(K7BBO,opr)
K7ND 1649-84-17-ABCD E
W7IDZ 957-67-11-ABCD
138-23-6-AB

Wyoming

W7KYM 308-28-11-AB

8

Michigan

WB8BGY 9146-255-34-ABD
WB8UD 4284-127-28-BCD
WB8QWP 3360-152-20-ABC
W8ABN 1743-83-21-AB
WB8AAX 720-90-8-B
WB8WIM(+WB8UHS)
490-49-10-AB

Ohio

W8OGS 9560-239-40-AB
K8NXI 6960-157-40-ABD
K8DIO 3542-134-22-BD
WB8TTS 3432-52-52-ABD
K8BW 2592-144-18-D
K8ZES 1296-101-12-BD
WB8DVD 180-30-6-A
WB8RMT 115-23-5-B
WB8MY 80-20-4-AB
WB8ROA 75-25-3-B
WB8VP(K8AL,K8AMF,WB8S LBB
PR,W8AHD,WB8S DGE ERB ONY
SXT IFT,WB8S AHV AKI KTK LVJ
QJB,opr) 33,123-478-61-ABCD
WB8CCI(WB8S DJY UL,W8BWMH,
WB8S EEX NFJ,opr) 22,446-363-58-ABD

West Virginia

W8PLZ(W8S VV,WB8S MSF ROD,
opr) 4698-162-29-AB
W8GOH(+W8S)
2112-132-16-B

West Virginia

W8FGK/8 8077-174-41-ABCD
W8AEC 4158-96-33-ABD
K9ZNK/8 2831-149-19-B
WB8DIN/8 2295-15-15-B
K3LNZ/8(WA3S EQQ NZL,W4PSJ,
opr) 18,352-313-54-ABCD

9

Illinois

GW3NJV/W9 11,439-245-41-ABD
K9HDE 1701-66-21-ABD

W9IVI 1190-70-17-AB
W9ABA 1080-118-9-B
WB9SNR 860-43-10-D
K9BQL 329-47-7-B
W9MHS 132-22-6-D
W9AHZ 22-2-4-B
W9NWE(+K9CT,N9SS,WB9YUN)
26,910-371-65-ABCD
W9IP(+K9S AKS PW VV)
14,520-330-44-AB
W9ZX(+WB9S SKB VDV)
2958-102-29-AB

Indiana

K9KFR 20,351-398-47-ABD
W9OEH 12,584-286-44-AB
W9PKL 4154-134-31-AB
WB9NTL 4152-173-24-AB
WB9LCN 1781-137-13-B
WB9FNR 423-43-9-BD
W9ER 140-20-7-B
K9SLQ(+K9MRI)
7770-236-30-ABD
K9IU(WA2S B1J ECZ,W3EP,WB9S
BEH VV,opr) 2565-135-19-AB

Wisconsin

W9JFM 1595-145-11-B
K9XY 897-56-13-ABD
W9SNU 832-17-13-BCD
N9TD 315-35-9-B
W9SUJ 154-22-7-AB

0

Colorado

WB9TTW/W9 249-83-3-B
WB9YS/W9 897-56-13-ABD
N9KVI(+W9GFS,N9BZ,W9MBZ)
2325-150-15-ABD

Iowa

WB9ZXU 3456-133-24-ABD
K9DAS 2937-88-19-BD
WB9V 1598-93-17-AB
W9RAP 1458-66-18-BD
W9XFX 1248-71-16-BD
K9CY 572-48-11-BD
W9TQAQ(+W9MJP,WB9BUO,
WB9AQP) 385-35-11-