

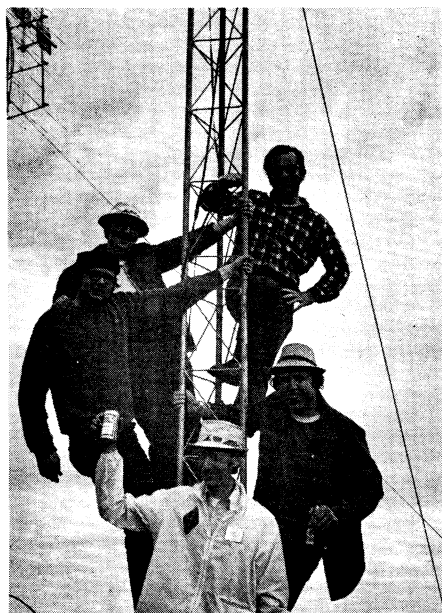
# June VHF QSO Party Results

ZAP! KAPOW! WHAM! THUD! WA1PID's 1974 expletives are repeated, not deleted, for this 1976 record-breaking vhf activity.

By Jim Cain,\* WA1STN

**G**ood band conditions and activity sounded the death knell for many records in the 1976 June 12-13 VHF QSO Party. The all-time division leader listing elsewhere in this report shows what happened to over a dozen single- and multi-operator station records. The six-meter band really played beautifully, with K9DKW/7 leading all with 68 multipliers, best ever on six. The weekend was quite a warm-up for more good 50-MHz propagation during Field Day a few weeks later. We raised the minimum number of six-meter multipliers to 40 (for listing in the multiplier box) and

\*Asst. Communications Mgr., ARRL



K7KOT/7 operators (top to bottom): WA7NAN, W7DNU, W7GLS, K7WTG and K7KOT. Safety first, of course; man with canned drink is standing on ground (or else he has a hook in his back).

## Top Ten

### SINGLE OP

K6YNB/6	60,342
VE3ONT	56,108
K8III	29,748
K9DKW/7	29,250
W2CRS	27,375
K8LEE	25,346
W5QDB	24,824
WA4GPM	19,264
W6KQG	18,762
K1PXE	17,820

### MULTI-OP

W3CCX/3	144,979
WB2WIK/2	106,399
W6AMT	105,080
WB6PXP	101,016
W1DC/1	89,046
WA2SMA/2	85,293
WA6JUD/6	81,213
W3BBS/3	80,544
W2SZ/1	74,000
WB2FKJ/2	72,030

still had more stations there than ever before. Log returns were up about 14 percent this year over the last several, 406 total.

K6YNB's single-operator score of over 60 kilopoints is another new all-time record. (Wayne set the previous record in 1974.) This was the fourth year in a row that he has led the entire field in single op; 89 multipliers on five vhf bands is certainly all-time tops for a station in the western reaches.

Close on K6YNB's heels was VE3ONT, making good use of what is obviously a fine geographic location for the type of band conditions we had in June. Plenty of locals, plus six meters for DX.

Pack Rats station W3CCX/3 led all multi-operator entries with another new high for them, 144k; three California-type multis made the top-ten listings, making use of fm on two meters with much success. Only four call areas are represented in the multi top-ten box, but *eight* appear in the single-operator listings, only the sixth and eighth call areas managing two listings. Nice representation from all over.

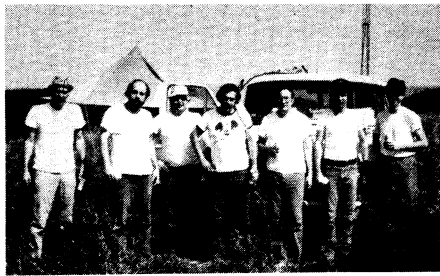
That W2SZ/1 you heard was the old WA1MUG group, somewhat diminished

in size this year. They still made West Massachusetts readily available. Mountaintopping was, of course, the order of the day just about everywhere, with most all the usual spots staffed by one group or another. The W4BFB/4 contingent continued to set new Roanoke Division records, up-and-coming W4VO/4 (the Northwest Georgia ARC) held sway in the Southeastern Division, WA6JUD/6 and Northern California Contest Club friends dominated Pacific, and on and on.

Comments on the fm rule, new in June and tried again in September (as this is written), were virtually unanimous in favoring the idea; in fact, probably half the comments were to the effect that "the new rule is OK, but let's go all the way and outlaw fm contacts altogether." The CAC will be looking at the situation very carefully this winter, keeping your comments in mind.

Please note a slight change in the coded listings of bands operated, in the line scores for each station. At the suggestion of Dick Knadle, K2RIW, we added codes for the following bands: 2304 MHz (F), 3300 (G), 5600 (H) and 10,000 (I). Where there wasn't enough room on a line to list, say, all bands 50 through 10,000, we used the code A-I. In the future, make sure your summary sheets clearly indicate bands operated above 1215, so we can make the proper notation in your line score.

Those of you who worked W0NRI as three sections may be surprised to find that entry listed as "Montana." At their request Montana it was, although those who claimed all three multipliers were given credit for all three. Policy has been to count borderline operations competitively as only one state/section; the CAC is presently investigating the procedure and would welcome your



The W0OHU/0 group says, "We're in front of the 6-meter operating position . . . it's 95 degrees F., the band is terrible, and we are out of beer." Left to right: W0OHU, K9AKS, WA9CWY, K9UYK, WB0SJJ, WB9QPI and K9CHZ.

comments. And while you're at it, go back and reread the report of the last VHF SS (August *QST*) and send the CAC your comments on the items mentioned in that article. Thanks to those who sent comments in with their QSO Party entries; all have been forwarded to the CAC, and special thanks for all the

pictures! Vhfrs are way out in front when it comes to submitting pictures and soapbox comments, and we do appreciate it.

Finally, a few corrections to that VHF SS report. The single-operator score of K8LEE, Ohio section, was calculated incorrectly; his multiplier should have been 42, and revised score of 26,544, instead of 55 multipliers. The Maryland-DC section winner was W3CJK, *not* W3CKJ as listed. Finally, we dealt a double blow to the group at W4VO/4; not only should they have been listed as Southeastern Division multi-operator winners, they should have also been listed as the all-time division leader in the box on page 81. Sorry!

### Soapbox

50-MHz E-skip sure helped score, but why, oh why, did the 144-MHz Es, prevalent just hours before the contest started, not reappear? 1296 sure is



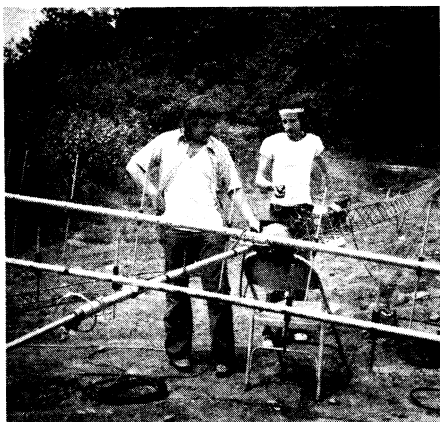
Mary, WA0CSL, was a welcome addition to 160 logs on 6 meters. She's obviously active on other bands, as the picture shows.

interesting . . . why don't more guys use that band? — (WB2WIK) Gary (WA7FSI) and XYL, Lauri, set up at Frost Peak, 5832 ft., s.w. of Kellogg, Idaho. . . . Lots of snow, in fact, the peak was in the clouds both Saturday and Sunday, but we were fortunate in that it only snowed all day Saturday and half of Sunday. The wind blew over the 6-meter beam so much, that the

### Multipliers Per Band

Min. Sections MHz	40	15	5	3	2	Min. Sections MHz	40	15	5	3	2	Min. Sections MHz	40	15	5	3	2
	50	144	220	432	1215		50	144	220	432	1215		50	144	220	432	1215
VE3ONT	46	19	10	8		WA3QPX	16	11	1	4		WA6JUD/6*	47	7	6	6	3
VE3FHK	41	8				WA3VJU/3	40	11		5		W6AMT*	48	8	7	7	1
K1PXE	1	21	13	15	5	WA3UFU	17	19	5	7		WB6PXP*	55	10	5		2
WA1IOX	28	17	4	6		K3IPM	33	9		5	1	K6YNB/6	56	11	9	9	4
WA1LOU		19				K3IWK	28	15				K6BPC/6*	40	8	4	8	4
WA1EXE		15				K3HTZ		16		7		K6QAX	39	6	6		
W1FAJ		9	5			K3WHC		11		11		WB6KAP	25	7	2	3	
WA1FFO*	49	21	10	15		W3CCX/3*	50	21	15	17	10	WB6JNN/6		3	9	2	
AC1AW*	20	6		5		W3BBS/3*	41	22	14	15	4	K6TJL/6*	38	10	8	8	
W1JAA	29	13	7	13	1	W3TMZ		21		18		K6GSS*	39	7	4	4	4
WA1KIR	40	3	2		2	W3KMW	19	13		5		K6DYD	51	5			2
WA5IDD/1	27	7	4	3		WA3LND		17		4		WB6NMT	33	8	5		
K1LOG		15		3		WA3NNZ		15				WA6AWM*	40	4	1		
W1MX*	42	15	12	15		K3IVO*	25	16	1	10		W6KQG	50	6		3	
WA1OAM	36	17	1	8	1	W3PGA	24	13	8	8		WA6BMV/6*	9	4		3	
W1YTW	22	13	8	6		W3OMY		18				K6QHC	53	3			
K1MNS	33	13	6	9		WB4YAB	57					K6JKQ	11	6	6	3	
WA1OUB	33	15		2		WB4VLH	49					WA6NRV*	52	9		6	
W1DC/1*	42	16	13	18	3	K4LWZ	44	4				WB6NKM	38	3		4	4
W1FMF*	46	15	6	8		WA4MVI	26	8		3		K6RNQ	42				
WA1IWK	31	12	5	3	1	W4VHH		10		6		K9DKW/7	68	6	3	1	
K1KEC/1	1	1	3	3	1	W4BFB/4*	42	11	1	3		K7PXI	52				
W1FJH		19				W4PAR/4*	35	9	1	3		WA3ISY/7	41				
W2SZ/1	42	18	15	18	7	WB4BSZ	43	2				W6LEV/7*	38	9	5	5	1
W2CRS	41	17	5	10		K2YRZ/4	48	4				WA7RTA	40	4	2	2	
WA2TEO	12	18	9			W4OJU	49					K8LZL/7	44				
W2CXC				9		WB4BND	44					K7KOT/7*	48	3	2	3	
W2HKT				7		W4SG1*	24	5	1	4	1	WB8BGY	45	6		4	
WB2FKJ/2*	41	20	14	16	6	W4GZX/4*	40	7		1		K8III	50	17			
K2CBA	34	19	1	8	2	WA4GPM	33	19	1	11		K8LEE	43	13		2	
K2OVS		17		6		K2UOP/4	33	10		4	1	WA8CLN	47	7			
K2RIW				16	2	W4UCH	22	9	5	5	1	K8UQA				17	
WB2TCC		16				WA2CJK/4		19				W2CNS/8*	45	20	12	17	
W2HI		18				W4FJ				13		K3LNZ/8	33	14	7	5	
WB2NED		5		3		WB4HQE				6		K9HDE	44	7		4	
WB2VWW	22	20				WA5UUD	59					W9KDR	47				
WB2CUT		18				WA5CZV	46	6				WA9HHH*	42	6	2	2	
W2OMS				17	6	W5TRB	52					W9NFE	49				
WB2WIK/2*	47	21	15	15	5	WB5AXC/5*	60	1				K9UVJ	35	9	2	4	
WA2SMA/2*	39	21	11	10		K5GMX	49	6				WB8HUC/9*	61	11			
WA2FZW	32	18	10	6		AC5WAX*	52	10				WA9HCZ/9		5		3	
WA2UDT/2*	32	18		6		W5QDB	54	3		1		K0DAS		9		4	
K2DEL/2*	39	10	6			WA5IYX	48					W0OHU/0*	53	10	4	3	
W2EIF	16	19	10	9	2	WA5QCP	51					K0TLM*	46	4		2	
K2BWR*	46	16	12	11		K5ZMS	45					WA0MRH	49				
K2KNV	35	20		5		K1VPD/5	42					WA2HJF/C6A	39				
WA2ZJF*	33	14		9		W6BXO	29	6	4	6		ZF1XW	39				

\*Mult-Operator Station



K2OWR (l) and WB2WIK speculate on the chances of that small tower surviving; it didn't, and ended up being replaced by a lowly extension ladder.

XYL-type Armstrong Rotator often became the tower maintenance crew as well. — (WA7FSI) A big thanks to the local fm guys for putting up with all of the simplex DXing. I didn't hear one snide comment during the contest. — (K8DIO) Last year we worked very hard on antennas and ran low power (50 watts). This year we bought long Yagis and worked very hard on an amplifier (250 watts). We should have stuck with last year's antennas. We had to work all contacts off the *back* of our array! — (W3NGR) We had an almost continuous opening to the West Coast during the contest. Very few East Coast stations heard and also spotty contacts with the southern states. Worked ZF1XW for my first foreign QSO on 6 meters. — (WA0CSL) Overall activity in the June contest was up slightly from last year. Band conditions on 2 meters and up

were normal until Sunday evening when there was some coastal tropo down to Virginia and North Carolina. I believe 6 meters had E-skip but I couldn't take advantage of it with the one watt out from the HA650 I borrowed. — (K1PXE) I hope to have a 2-meter amplifier next time. One watt just isn't enough! — (WB6EMR) Surprised to hear no A3 emission (a-m) on 50 and 145 MHz! — (WB8DSG) Spent a lot of time listening to K2RTH talking to stations that I couldn't hear — guess I'll have to get the antenna higher. — (K2OVS) Now, THAT was more like it! Excellent 6-meter conditions throughout, including Sporadic E on Saturday afternoon, some scatter Saturday evening and Sunday, and double-hop to California Sunday night! — (K4MSG) Things were pretty spotty here until Sunday night. Then things got as hot as I could handle for a few hours. Actually, that period of Es activity was a real blessing. Being an apartment dweller, I was using an indoor dipole six feet off the floor on 50 MHz . . . and the band opening made it considerably less of a struggle. Thanks to those ops, who were willing to dig through the QRM for me. — (WA9ETW) Construction is already underway on 2304 MHz. Look for us there next June (as well as 6 thru 1296). — (WB2FKJ) Where, or where were all the local folks on 223.50- and 446.0-MHz fm simplex? — (W3MSN) Apparent misunderstanding. Thought we had permission to stay on 2700-foot Mount Tamalpais. However, at 9 A.M. Sunday, rangers approached and told us to get off in an hour. We were forced to find a new QTH and ended up at a spot of only 100-foot elevation. However, that's the fun of mountaintopping(?)! —

#### Division Leaders

SINGLE OP	DIVISION	MULTI-OP
K2KNV	Atlantic	W3CCX/3
K9HDE	Central	WB8HUC/9
WA0CSL	Dakota	W0OHU/0
WA5UUD	Delta	W4SGI
K8III	Great Lakes	W8ULC
W2CRS	Hudson	WB2WIK/2
W0SEA	Midwest	K0TLM
K1PXE	New England	W1DC/1
WA7RTA	Northwestern	K7KOT/7
W6KQG	Pacific	WA6JUD/6
WA4GPM	Roanoke	W2CNS/8
W5TRB	Rocky Mt.	WB5AXC/5
K2YRZ/4	Southeastern	W4VO/4
K6YNB/6	Southwestern	W6AMT
W5QDB	West Gulf	AC5WAX
VE3ONT	Canadian	VE3US/3

(WA6BMV) I say the operation was atypical because, contrary to tradition, we were pretty well set up before the beginning of the contest, and had remarkably little equipment trouble during the bash. — (WA9HHH) Guess the highlight of the contest was the late night E-layer opening into California and other western states. The XYL loved it as she worked 6 mostly. — (WB4EXW and WA4NOY) We encountered snow, high winds, and rain at the 8172-ft. campsite. You can just imagine what it was like with one cold wife, two bored kids (3 and 10 years old), one soaked German shepherd, and me (very frustrated!), all crammed in a 1962 Ford Econoline Van. — (WB7AOB) It was certainly nice to hear all that activity on 432. Had a ball even if my score is modest. — (W2HKT) I worked K1WHS for the first time and we'd been trying, unsuccessfully, daily for a month! I worked multiple stations in EMA, NH, CT and Maine, many of whom were running low power. Tropo lives! — (K1FJM/4) A veritable traffic jam on 1296 MHz!! A considerable increase in activity and equipment quality since last year. Looking for bigger and better things to come! — (K6ZMW) I picked up 5 new states and would have gotten a lot more if my XYL hadn't had such a long "honey do" list. Hi! — (WA7LHZ) Two meters was something else! — absolutely dead at this QTH (save for the local 2-meter fm crowd). Two bonus states were picked up on random meteor-scatter skeds. Anybody in Alabama and Georgia interested in meteor skeds? — (K2YRZ/4) Sunday morning produced a good tropo opening in the Wisconsin, Minnesota, Illinois, Iowa and Nebraska areas. — (K0DAS) Plenty of activity on 6-meter ssb. Wish that more ssb operators, who have a-m capabilities on their rigs, would come up on a-m and exchange points with us a-m-ers. — (WA1GDR) The contest was active and enjoyable on Saturday afternoon, but it died on Sunday afternoon,



WA9HHH, W0DYI and WA0IYY do their thing at the HoHoHo station.

## CANADA

## Maritime-Newfoundland

VO1MO 162-18-9-A

## Ontario

VE3ONT 56,108-650-83-ABCD  
VE3FHK 9800-200-49-AB  
VE3EYR 924-66-14-AB  
VE3AIV 67-78-13-AB  
VE3FHM 174-29-6-B  
VE3WL 114-19-6-A  
VE3US/3(+VE3S ABG DOX  
FKU GVH) 1365- 65-21-AB

## Manitoba

VE4AS 4305-120-35-ABD  
VE4YW 224-28-8-A

## Saskatchewan

VE5DX 3600-120-30-AB

## British Columbia

VE7ASM/7 9048-232-39-AB  
VE7SL 3737-101-37-A  
VE7XF 2744-98-28-A  
VE7AZG 1200-58-20-ABD

## U.S.A.

1

## Connecticut

K1PXW 17,820-236-55-ABCD  
W1IOX(K1ZND opr)  
14,630-243-55-ABCD  
W1GRW 3277-113-29-A  
W1GTP 2496-78-32-AB  
W1LOU 1919-101-19-B  
W1AIXE 1489-99-13-AB  
W1AIEH 636-53-12-B  
W1FAJ 602-37-14-BC  
W1FEZ 460-46-10-B  
W1AUBX 141-37-8-B  
W1HDQ 144-24-6-B  
K1IZE 135-27-5-AB  
W1AINL 110-22-5-AB  
W1WEE 96-24-4-AB  
K1TFA/1 71-18-4-AB  
W1AIFO/1(+K1HTW,W1DGL,  
W1ANGR) 62,605-593-95-ABCD

K1ZKR(+K1SIV),W1AIS HYN  
LMZ) 15,317-289-53-AB  
AC1AW(W1AIS NRR OCU,W1AJSU  
oprs) 3565-106-31-ABD

## Eastern Massachusetts

W1JAA 15,183-197-63-ABCD  
W1KIR 9776-202-47-ABCE  
W1MKE 6240-106-39-AB  
W1AIO/D/1 6109-134-41-ABCD  
K1DAT 3668-31-28-A  
AC1CRL 1176-54-21-ABD  
W1NQV 1160-58-20-AB  
K1LOG 882-44-18-BD  
W1LXP 80-10-8-A  
W1JOT 75-10-5-BDE  
W1MX(W1AIS RL,TWD,W2QH,  
W4TTG,WAGUCU oprs)  
51,966-556-84-ABCD  
W1OAM(W1AIS DRO ONB OZI  
PBU QWF VFI,K1VSK)  
31,915-464-65-A,F,I

## Maine

W1YTW 9947-176-49-ABCD

## New Hampshire

K1MNS 14,823-218-61-ABCD  
W1AIOUB 9176-76-50-ABD  
W1JSM 546-42-13-B  
W1AGDR 45-9-5-A  
W1DCP/1(K1S KEC MUC NZQ SVF  
TWFW1S B1P DUS KRS QFS)  
QXX, W1AIS GVH IRL IZO LYX  
MHJ MSK NPN NVC QQJ QYH  
QYM RSP TZV UGJ YAM,W1N1S  
VEO YCR oprs)  
89,046-816-97-A-I  
W1FMF(+K1MFW,K1BXM,W1AIS  
ABV FSZ QDQ W1P)  
37,881-175-75-ABCD  
W1APQY/1(+W1AIRGA)  
240-40-6-B

## Rhode Island

K1COW/1 572-44-13-AB

## Vermont

W1AIWK(WA2BLM opr)  
14,522-259-53-A-F  
K1GYT 5194-106-49-AB  
W1AIM 4092-124-33-AB  
K1KEC/1(+K1NZG,W1PVP)  
216-13-9-ABCD

## Western Massachusetts

W1FJH 1064-56-19-B  
W1AIP 28-7-4-B  
W2S2/1(K1RQF,W1AIS IQB KQL  
NWG,WB2BX oprs)  
74,000-630-100-ABCD  
W1AUL/1(+W1AIS WRL WRM)  
2408-86-28-AE,

2

## Eastern New York

W2CRS 27,375-345-73-ABCD  
W2ATEO 5889-139-39-ABCD  
W2CXC 234-13-9-D  
W2IP 147-21-7-B  
W2HKT 126-9-7-B  
WB2FKJ/2(K2S ARO DNR UE,  
W2S AWX CXH HCQ HHC KBH  
KGC,W2AS HAQ ZPT,WB2S DVV  
NCT NKN SJH UCY YUJ,  
K8BBC oprs)  
72,030-623-98-A-E,I  
K2CBZ(+W2KHQ,W2S LNA PVV  
UYE,WB2S BYP DUS KRS QFS)  
18,046-265-64-ABCE  
WB2NPR/2(+K2BGO,W2HRE)  
6298-134-37-AB

## New York City-Long Island

WB2GLQ/2 4270-122-35-AB

K2OVS 2737-103-23-BD  
K2RIW 2232-60-18-DF  
WB2TCC 1392-87-16-B  
W2H1 7418-13-B  
K2PAY 1280-64-20-AB  
W2ASRH 938-67-14-B  
K2YGM 720-90-8-B  
W2ASLY 630-45-14-B  
W2EULS 414-37-9-BCD  
WB2NED 168-16-8-BD

## Northern New Jersey

WB2VWW 6930-165-42-AB  
WB2CUT 2124-118-18-B  
W2OM5 1978-40-23-E  
WB2TMD 920-47-20-A  
W2CLM 10-5-2-B  
WB2WIK/2(+K2OWR,W2AS  
DBD NXD,WB2S HVY UJL YGT)  
1065-89-903-13-ABCD  
W2ASMA/2(W2AS AXB HDE HLE  
RIV UPK,WB2S JCP QEA QOQ  
UXA VBS oprs)  
85793-936-81-ABCD  
W2FZW(+W2HVA,W2AS GEZ  
QOJ) 20,262-282-66-ABCD  
W2AUDT/2(W2AS WBLZ DEJ)  
14,896-256-56-BD  
K2DEL/2(K2S IXE KQJ TKR,  
W2AS BSU CRF CXS JIM RYC,  
WB2S KKO JAN VLG oprs)  
13,860-242-55-ABC  
WB2YGF(+W2WJY)  
8188-176-46-ABC  
W2ODV(W2AS FUJ JVK,  
WB2JVN oprs)  
140-35-4-B

## Southern New Jersey

W2EIF 11,368-164-56-ABCD  
WB4NXY/2 585-39-15-A  
W2AQU 455-35-13-AB  
W3AIV/2 108-27-4-AB  
K2BWR(+K2ZJ)  
23,955-245-85-ABCD  
WB2LCC(+W2AJO)  
707-101-7-B

## Western New York

K2KNV 17,040-277-60-ABD  
W2AIKO 5032-134-37-ABCD  
W2A2TEY 2320-60-20-AB  
WB2DHR 779-41-19-AB  
W2WGL 468-36-13-B  
W2AHYK 429-39-11-B  
K2EJ 226-10-1-E  
W2ZJF(K2S IJI RKW,  
W2AS RQC TOI,WB2S BGI ERK  
FBP oprs) 13,328-226-56-ABD  
W2WAW(W2AS JZP ZRO,  
WB2S ELO GHH SGS oprs)  
5994-161-37-ABD  
AA2BPE(+WB2RKO)  
90-31-AB  
K2LDT(K2GUG,W2AS CEH KUO  
NHP OLW ZZZ,WB2CHR oprs)  
2172-181-12-AB  
WB2BRP/2(+W2AS AUG DKC,  
WB2VUO) 1230-81-15-ABD

## Delaware

W3APGX 2816-83-32-ABCD  
W3BDP 1200-75-16-AB  
W3ATHL 176-22-8-AB

## Eastern Pennsylvania

WA3VJU/3 10,696-181-56-ABD  
WA3UFU 9702-173-49-ABCD  
K3IPM/3 9118-134-47-ABD  
K3IWK 3863-161-43-AB  
WA3RJM 4356-121-36-AB  
WA3CSP 3008-94-32-AB  
K3BHT 246-12-8-B  
WA3EYD 1848-88-21-AB  
K3KWH 1804-60-22-BD  
K3SWZ 784-56-14-B  
W3ETB 420-39-10-AB  
WA3KFT 380-37-10-AB  
AA3HIT 266-36-7-ABC  
W3CCX/3 (K2EYV,W2EIF,  
W2AMW,K3S BPP DLS EOD GAS  
IGX IUU JIZ MWV MXM,W3CL  
CXU ELX HMU HQT KKN YXF  
ZD,W3AS AXV JUP NFN KQY  
NUP OVH UIDS UXM YUE YZC  
ZRE,WB3CI oprs)  
144,979-1052-113-A-I  
W3BBS/3(+K3S CP FFX FMR IJX  
RYL,W3S AAJ XWP GPX VQM ZMN,  
W3BS BRW KOZ UGP VRG VVG  
WIM YRK ZCP,WB3AMY,  
WN3ABE oprs)  
80,444-752-96-ABCD  
WA3IEM/3(+WA3IGV)  
6118-133-46-AB  
W3LP(W3S GFN JUZ,W3ACUQ  
oprs) 930-60-18-AB  
W3HZU(K3S FHC GDI SZY,  
W3FLD,W3AGYG oprs)  
708-59-12-AB

## Maryland-D.C.

W3TMZ 7605-150-39-BD  
WA3DMF 6230-170-35-ABCD  
AC3KMY 6179-150-37-ABD  
K3PPE 5824-182-32-AB  
WA3LND 3004-135-21-BD  
WA3NNZ 1170-78-15-B  
W3MSN 770-53-14-ABCD  
W3IPJ 728-56-13-AB  
W3RWV 272-34-8-B  
W3TFA 189-18-7-ABCD  
WA3YKI 185-37-5-AB  
WA3UPH 141-47-3-AB  
W3H2P 28-5-2-B  
K3IVO(W3DPU,W3S TID YBY,  
WB3AMF,WB4ACJ,WB8CXB  
oprs) 13,572-234-52-ABCD  
W3PGA(K3S FME FRX PHH RQJ  
YZY,W3VRD,W3S HZJ LAW,  
WB3AJW,WN3BIT oprs)  
13,091-222-53-ABCD  
W3EAX(WA1NGW,W3YTP oprs)  
1197-53-19-ABCD

## Western Pennsylvania

WA3ANO 1710-90-19-AB  
W3ANX 1660-83-20-AB  
W3OMY 1494-83-18-AB  
AC3BWU 1440-80-18-AB  
W3HDH 520-40-13-AB  
W3DJM 261-29-9-AB  
K3YVN 48-16-3-B  
W3BGR 9-5-B  
K3HKK(K3S E2S LVO PLX RBH,  
W3S HDH KJM,W3S IGF LKW  
oprs) 4851-147-33-AB  
W3NGR/3(+W3AJO)  
507-39-13-B

## 4

## Alabama

WA4NPL 1566-58-27-AB  
K4WHZ 275-25-11-A  
W4ACQ 200-19-11-B  
WB4OQT 190-19-10-AB

## Georgia

WA2JVO/4 4824-134-36-AB  
WB4WXE 2025-75-27-A  
W4ISS 200-19-11-B  
W4WDH 224-32-7-B  
W4SHL 26-13-2-B  
W4VO/4(K4S AEK CKS, W4S  
JTH PFF, WB4S AEG YWK,  
WN4IBI oprs)  
17,682-421-42-AB

## Kentucky

WB4YAL 14,307-251-57-A  
WB4VLH 5635-115-49-A  
WB4MCC 4224-132-32-AB  
W4SMU 624-104-6-B

## North Carolina

K4LWZ 10,032-209-48-AB  
W4AMW 5587-147-37-ABD  
W4LDC 4564-167-28-AB  
W4GBE 2088-66-29-ABD  
W4AWZQ 2000-80-25-AB  
K1FJM/4 1140-76-15-B  
W4VHT 1056-52-16-BD  
WB4LDP 261-29-9-AB  
W4BFB/4(K4S BWS GHR LVB  
MQG SAN SLK, W4AS APD ICM  
VCG,W4S ABLJ BXC CCW IBW  
YFC,WN4S BQC CJA oprs)  
30,666-526-57-ABCD  
W4PAR/4(K4S FMC HGK, W4S IPP  
LYC OTI UJL W4U,W4S HAZ  
LVD KFF oprs)  
10,272-204-83-ABD  
W4NOY(+W4BEXW)  
3480-116-30-AB

## Northern Florida

WB4BSZ 6570-146-45-AB  
W4CSS 2380-70-34-AB  
WB5MAC/4 1792-56-32-AB

## South Carolina

W4IQQ/4(K4S ADI LQO, W4LZW,  
WB4S HKZ NBK PGY YII oprs)  
6231-201-31-AB

## Southern Florida

K2YZR/4 12,012-231-52-AB  
W4OJU 10,633-217-49-A  
WB4BND 5324-121-44-A

## Tennessee

W4AALJ 6513-163-39-ABD  
W4AIA 1820-70-26-AB  
W4SGI(+K4WS, W4S LQE ZXB,  
W4AIGI) 11,480-321-35-ABCD  
W4GZK/4(W4S IWN NIV ZXD,  
W4BJGG oprs)  
10,320-215-48-ABD

## Virginia

W4GPM 19,264-278-64-ABCD  
K2IOP/4 9696-193-48-ABDE  
K4MSG 5358-141-38-AB  
W4UCH 5208-110-42-ABDE  
W4AMMP 4969-126-37-ABC  
W4ARDT 3863-113-34-A  
WB4WLW 3120-130-24-AB  
W4ZCJ/K/4 1501-79-19-B  
W4ASIJ 416-99-24-AB  
K5DZF/4 1068-89-12-B  
K4FTO 903-43-21-AB  
AC4WSF 549-61-9-B  
W4FJ 44-3-2-B  
W4KMS 490-35-14-A  
K4CFB 464-58-8-B  
W4AEP 330-29-11-ABD  
WB4HGE 181-10-2-BD  
K4FJW/4 126-18-7-A  
WB4NTV 75-15-5-A  
K4LHB 440-5-5-B  
W4GCV(+K4VZK, W4S FMS KNP  
QOC,WB4BYR)  
7888-232-34-AB

## West Indies

KP4AHQ 1026-57-18-AB  
S

## Arkansas

K5MWH 408-34-12-B

## Louisiana

W5AUUD 14,396-244-59-A  
WB5CZV 8268-159-52-AB  
WB5LYF 4280-107-40-AB  
W5JFB 108-17-23-A  
W5AYO 1008-42-2-AB  
W5QBX 940-47-20-AB  
K4CHE/5 160-18-8-ABD

## Mississippi

K5TYP(WA1JUP,K7VAY,  
WB9RHV, LBN POF oprs)  
4060-116-35-AB

## New Mexico

W5TRB 9464-182-52-A  
W5AXC/5(W5A1GFM,K5EFW,  
W5AMHR,WB5FSQ oprs)  
23,424-384-61-AB  
W5IXS(+W5IXP)  
2070-90-23-AB

## Northern Texas

K5GMX 14,672-262-56-ABE

## Oklahoma

WB5DSH 1272-53-24-A  
AC5WAX(+K5S BXL LUR WVX)  
19,654-317-62-AB

## Southern Texas

W5QDB 24,824-426-58-ABD  
W5AIVX 9456-197-48-A  
W5QCP 9435-185-51-A  
K5LJ 5540-165-36-AB  
K5LJ 5540-165-36-AB  
AA5MCU 5852-154-38-AB  
K1VPD/5 5040-120-42-A  
WB5IZN 2992-88-34-A

## 6

## East Bay

WB6XO 12,240-235-45-ABCD  
K6ERF 280-40-7-B  
W6JUD/6(+K6KLY, W6S OAT  
YKM) 81,213-1000-69-ABCD

## Los Angeles

WB6TDE 2100-84-25-AB  
WB6MBO 104-26-4-AB  
W6AMT(WB6S ASK FER RAL  
RIV VZY oprs)  
105,080-1359-71-ABCD  
WB6PXP(+W6PVB,WB6YBL)  
101,016-1228-72-ABCI  
WB6JCD/6(+W6PJM, WB6S AAG  
DGT HJO)  
13,019-264-47-ABC

## Orange

W6ACN 3280-77-40-AD  
W6CBG 176-19-8-BD

## Santa Barbara

K6YNB/6 60,342-593-89-ABCD  
WB6IDK/6 455-33-13-ABC  
K6BPC/6(W6S BFW ENI HXD  
LCP MEM QJP, WB6S IMV RAJ  
VYP oprs)  
28,416-420-64-ABCD

## Santa Clara Valley

K6GAX 10,965-197-51-AB  
WB6KAP 4588-106-37-ABCD  
WB6JNM/6 392-40-7-BDE  
WB6EMR 114-38-3-B  
K6TJL/6(K6S DTR KVV, W6S AOF  
VY, W6S GGF KKK MGZ,  
WB6TJO oprs)  
30,124-377-68-ABCD  
K6GSS(+W6HCF, WB6S JAX KBZ)  
26,432-424-56-ABCD

## San Diego

K6DYD 10,640-190-56-AB  
WB6NMT 6486-134-46-ABC  
W6AWM(+W6AMH)  
10,980-239-45-ABC

## San Francisco

W6KQG 18,762-307-59-ABD  
W6JYU 902-40-22-ABC  
W6FAW 574-41-14-AB  
W6BMM/6(+W6S HPX VEF,  
WN6OYZ) 6608-355-16-ABD

## San Joaquin Valley

K6QHC 12,208-218-56-AB  
AC6YKS 5320-133-40-AB  
K6JKQ 2158-67-26-ABCD  
WB6BLR 1239-59-21-AB  
W6BD 820-40-20-ABC  
K6ZMW 84-7-4-E  
W6NRV(+W6BVI)  
26,838-355-71-ABDE

## Sacramento Valley

WB6NKM 5445-115-45-ABD  
K6RNG 4242-101-42-A  
WB7AOB/6 220-20-11-AB

## Pacific

KH6BZF 1-1-1-B

## 7

## Arizona

K9DKW/7 29,250-371-78-ABCD  
K7PXI 11,336-218-52-A  
W7AIV/7 11,336-218-52-A  
W7KMW 5890-155-38-AB  
W7AZW 1422-79-18-AB

## Idaho

W7FSI/7 4860-135-36-A  
W7AYX 1248-52-24-A  
W7WXX 920-46-20-AB

## Montana

W7JRG 4686-142-33-A  
W7NRI/7(+W7LJF)  
6970-205-34-A

## Nevada

K7ICW 4773-129-37-A  
W7LHZ 736-46-16-A  
W6LEV(+K6VY, W6S GGV  
KJD, WB6S CXF OKK)  
21,054-333-58-ABCDH

## Oregon

W7RTA 10,896-205-48-ABCD  
W7LUD 5054-178-36-ABCD  
W7TDO 3640-43-38-ABD  
W7NFC 1768-68-26-A  
K7GZB 120-18-5-BCD  
K7CZB/7(+K7DY, W7S BUJ  
ECY) 8865-190-45-ABCD  
K7HSJ(+W7AZP)  
3410-108-31-ABCD  
W7ECY/m(+K7LTV)  
104-13-8-AB

## Utah

K8LZL/7 7040-160-44-A

## Washington

W7KFS 6825-195-35-AB  
W7JUV 6732-187-36-AB  
W7QIB 3640-43-38-ABD  
K7RFB 5474-161-34-AB  
W7PVE 3400-136-25-AB  
W7UGK 3094-91-34-A  
W7FV 2914-93-31-ABD  
K7DBU 1612-61-26-AC  
W7NSM 555-37-15-AB  
K7KOT/7(+K7WTG, W7S DNU  
GLS, W7NAR)  
31,884-534-56-ABCD  
WB7EFH(K7IPQ, W7S NIW HGG  
RJW TOM oprs)  
14,868-351-42-ABC  
W7EHE/7(+K7LTV)  
1056-48-22-AB

## Wyoming

W7VDZ 4743-153-31-A

## Alaska

KL7HLE 1596-114-14-A  
K7MWC/KL7 4-2-2-AB

## 8

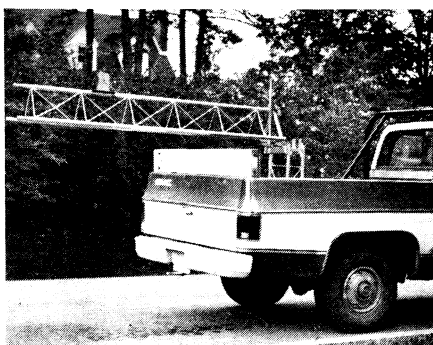
## Michigan

WB8BGY 13,090-231-55-ABD  
W8EJU 2461-107-23-AB  
WB8DSG 720-45-16-AB  
W8BYH 649-59-11-AB  
WB8WWM 481-37-13-AB  
AB8TGY 216-36-6-AB  
K8QJO/8 32-8-4-A  
W8BJXE/8(+WB8BT)  
850-50-17-AB

## Ohio

K8III(WA3SZX opr)  
29,748-444-67-AB  
K8LEE 25,346-435-58-ABC  
W8ALN 17,442-323-54-AB  
WB8IGV 5106-137-37-ABD  
W8HPY 4719-121-39-AB  
W8AMI 4191-127-33-AB  
W8SXX 2548-98-26-A  
K8UQA 1530-45-17-D  
W8ATLZ 1134-59-18-ABCD  
WB8WCE 1003-59-17-AB  
K8D 830-82-10-B  
W8BSTX 708-91-2-AB  
K8BMD 40-10-4-B  
WB8MMF 2-1-1-D  
W8BMMF(+W8BMS JDH TYF WQC  
WVY, WB8EEU)  
17,388-378-46-AB  
AC8VBP(WA3OPN,K8ITH,W8AHD,  
WB8S ERB) 31,360-182-20-AB  
W8WCU/8(+W8BPF,W8BJRZ)  
2398-109-22-AB

## West



Not much explanation needed here, except that the installation belongs to WB4JGG and was used this year at multi-op W4GZX/4.

never to return! — (W3ANX) Managed to foil Murphy's efforts by having the rig problems a week before the contest. Band conditions were encouraging — can't wait 'til September. — (WA3IEM)

My first try, portable from a pickup cab on local hilltop. — (KØYMB) Heard quite a few of the boys but couldn't contact them as my cw/ssb rig was disabled and was limited to a-m only.

What a sad state of affairs! — (WA2CAK) Spent most of the weekend out with the club (WB2FKJ/2) but couldn't resist going home for a while and putting the new Echo 70 on; nine sections on 432 in just a few hours operating time shows what that band can do if a few more people get on (and I heard at least one more section I didn't work). — (W2HXC) I was getting pretty disappointed in band conditions and my 10-watts PEP output rig (on six) until Sunday evening when the band finally opened to the east; after that I can't remember when I've had more fun in two hours. — (WB9JUD) Of my 78 QSOs on 2 meters, 20 were on cw or ssb; in past years, four or five QSOs there were average. — (WA4MVI) Thunderstorms in the area made me lose about an hour on Sunday; watching a bolt hit a telephone pole down the street convinced me to ground everything and stay in the other half of the house! — (WA4MMP) "Boy they picked a good day to have a vhf contest!" — (WA7TDU) I enjoy working vhf contests because the operating etiquette is far superior to that on the low bands. Only gripe is lack of cw operation on six meters. — (WB2VWW) Best vhf contest in years. — (W4WDH) Six meters was fun, but the highlight was calling "CQ contest" on 1296 and having somebody come back to me. — (K6GSS) This contest marked my return to 2 meters after an absence of 23 years; I found the same fun, good fellowship and sportsmanlike conduct I remembered from past events. — (W3RWW) Worked VE4MK on 8-level RTTY on 147 MHz for a contest contact — is this a first? — (VE4AS) Highlight for me was QSO with KL7IBG for state number 49; now where's Hawaii? — (WA5QCP) Attention — vhf activity does exist in the Pacific Northwest! We set another division record this year, and will rotate to another call sign next year; our group is a spin-off of last year's K7IPQ/7. We took time out this year to play a liaison role between several Oregon stations in their efforts to work into Washington and BC on 2,220 and 432, and feel this is an important part of the QSO Parties. — (K7KOT/7)

QST

#### All-Time Division Leaders

##### SINGLE OPERATOR

CALL	SCORE	YEAR
K3IPM	37,989	68
K9HMB	18,886	72
KØALL/Ø	13,068	74
WA5RMS	16,740	70
K8LEE	37,114	74
K2RTH	37,875	74
W9ECV/Ø	15,822	68
WA1NGR	33,259	74
K7GWE	20,515	74
K6YNB/7	19,654	72
WA4GPM	19,264	76
W7VDZ	13,110	74
W4GJO	32,292	62
K6YNB/6	60,342	76
W5QDB	24,824	76
VE3ONT	56,108	76

##### DIVISION

##### MULTI-OPERATOR

	CALL	SCORE	YEAR
Atlantic	W3CCX/3	144,979	76
Central	K9HMB	40,468	75
Dakota	WØOHU/Ø	23,730	76
Delta	W5UK/5	18,535	74
Great Lakes	WA8BCA	61,656	75
Hudson	WB2WIK/2	106,399	76
Midwest	WØOHU/Ø	33,120	74
New England	WA1MUG	172,142	74
Northwestern	K7KOT/7	31,584	76
Pacific	WA6JUD/6	81,213	76
Roanoke	W48FB/4	30,666	76
Rocky Mtn.	WB5AXC/5	23,424	76
Southeastern	W4VO/4	17,682	76
Southwestern	W6AMT	105,080	76
West Gulf	K5WVX	33,696	74
Canadian	VE3ONT	82,188	74