

September VHF QSO Party Results



Vermont, always a handy multiplier, was supplied by W1GGM, operated by a group on Mount Equinox.

REPORTED BY JIM CAIN,* WA1STN

GOOD grief! When we mentioned that conditions for the June VHF QSO Party weren't the best on record we weren't asking if the propagation gods could provide more bad news in September. September 6 and 7 were on the downhill slide from at least average conditions which had prevailed in most parts of the country the previous week.

From our editorial standpoint, the best part of this activity was the terrific input from participants, in the form of snapshots, soapbox comments, short stories, and just lots of logs. Entries totaled 282, up nicely from last year's 231. We'd prefer to let some of you tell the story:

"Just a quick comment on conditions. I read with interest the write-up on the June contest; I couldn't help but notice all the hand-wringing

about poor conditions. Well, just because we (WA1MUG) submitted the second-highest all-time score, and W1DC and W3CCX submitted scores that were higher than they've ever submitted before (not to mention that they were the third and fourth highest all-time scores), that must mean conditions were poor. Well, the propagation gods must have read that write-up and decided to show what poor conditions are really like." (WB2DRW/WA1MUG). [OK, John, we get the message. — Ed.]

"Six meter conditions were terrible for this part of the country during the contest; managed to work only one out-of-state contact (WB6KBZ), on a probable meteor scatter." (W7KMY).

Finally, here are some comments and an interesting band/mode breakdown from K1PXE. Note Pete had the third-highest single-op score, while not operating *any* six meters nor any fm on two. "The contest was the most fun in years. Band conditions were average except for a slight tropo coastal opening. The trend on two meters over the

* Asst. Communications Manager, ARRL



Here's some explanation of WA4MMP's always-potent signal from Virginia on various bands.

Min. Sections MHz	30	15	4	3	1	Min. Sections MHz	30	15	4	3	1	Min. Sections MHz	30	15	4	3	1
VE2DFO	17	16				WA2VWW	13	19				K4GL	4	5			4
VE3BQN	3	19		7		WB2CVT	17					K4DFK		23			
K1PXE		20	12	16	5	W2OMS				16	4	W5WAX	16	13			3
WA1FFO/1*	27	19	12	14	3	WB2GKE*	24	21	13	15	3	WA6JUP/6	9	10	4		6
W1JAA		11		12		WA2SNA/2*	22	18	4			WB6YO	6	7	5		
W1JOT		3		4	1	WA2FZW*	17	13	10	9		WB6OKK	11	11	6	5	
W1MX*	8	13	10			WA2UDT*	16	19		8		K6IBY			5		
K1WHS	24	21	10	12		W2EIF	15	19	9	9		K6YNB/6	12	12	8	7	2
W1YTW	9	15	12	7		K2BWR	22	18	14	6		K6QAX	10	8	6		
WA1OUB	22	14		5		W2CNS	22	20	5			WA6GYD	9	7	4		
K1MNS*	15	12		12		WA2SVL	17					WB6KBZ/6	13	10	7	4	
W1FMF*	24	14	6	6		K2JIO	17					WBKQG	13	10			
W1BIM/1*	16	16				K2EVJ	8	3			2	WB6NMT	7	4	4		
WA2JHR/1*	18	12	4	3		WA3QPX	15	14	6	7		WA6RNF/6*	8	6	3		
W1GGM/1*	18	20	13	13	5	W3CGV	4			1	1	K6JKQ	7	9	7	6	
WA1HON/1*	5	3	2	1	1	W3HQT		23	12	20	3	WA6NRV	8	9		5	
WA1RWU	22	15				WA3VJU	20	14		6		K6ZMW	8				3
WA1MUG/1*	32	21	15	18	7	WA3AXV	16	14	2	10		WB6YIK/6*	9	8		3	
W2CXC	15	16				WA3NVO	15	12	8	7		WB6NKO	7	7		5	
K2ARO		2		8		WA3KPS	6	17				K6KLY/7	6	6	3	4	
W2HF		8		4		WA3UFU		19		4		K7AUO/7*	3	3	2	2	3
K2CBA*	18	18	7	14	2	W2OW/3*	19	14	5			K7WKT/7*	1	1		1	3
WA2BLM*	21	17	10	5		W3AKW/3*	4	17	9	10		W7FHZ/7*	3	3	2	2	1
K2RTH		25	13			W3TMZ		22		19		WB8BGY	26	12		3	
K2OVS	11	18		11		K3LFO		19				K8LZF		6	2	3	
WA2PMW		17				WA3LND		18				K8LEE	35	5		2	
WA2EUS		8		3		W3PGA/3*	18	12	3			K8UQA				11	
K2BF				9		K3IVO*	16	16		7		WA8PLZ*	27	21	1	4	
WA2GEZ	16	16				W3GNR/3*		18				W4GKM/8		9		3	
						W4ISS	3	5		3		K9HDE	5	5		4	
						W4BFB/4*	24	15		6		K9UVJ	10	9	3	5	

*Multioperator Station

DIVISION LEADERS

Single Op.	Division	Multiop
W3HQT	Atlantic	K2BWR
K9UVJ	Central	WB8HUC/9
K1WVE/Ø	Dakota
WB4JGG	Delta
K8LEE	Gr. Lakes	WA8PLZ
K2RTH	Hudson	WB2GKE*
WØKC	Midwest	KØTLM/Ø
K1WHS	New England	WA1MUG
WA7RTA	Northwestern	WA7NAN/7*
WA6JUD/6*	Pacific	WB6KBZ/6*
WA4GPM/4	Roanoke	W4BFB/4
WA8GUB/Ø	Rocky Mt.
WØDYB		
WA2JVO/4	Southeastern	W4VO/4*
K6YNB/*	Southwestern
W6GTJ/5	West Gulf	W5WAX
VE3BQN	Canadian	VE3FHK

*New Record

TOP TEN

Single	Multi
K6YNB/6 16,564	WA1MUG 108,252
K1WHS 15,276	WB2GKE 60,268
K1PXE 15,052	WA1FFO/1 44,550
W3HQT 14,442	W1GGM/1 30,981
WA6JUD/6 13,079	WA8PLZ 28,408
W2EIF 12,792	WA2SNA/2 27,456
WA3VJU 11,160	K2CBA 25,665
K8LEE 11,046	WA2BLM 21,359
WA3AXV 10,038	W4BFB/4 19,260
WA3NVO 9828	K1MNS 17,823

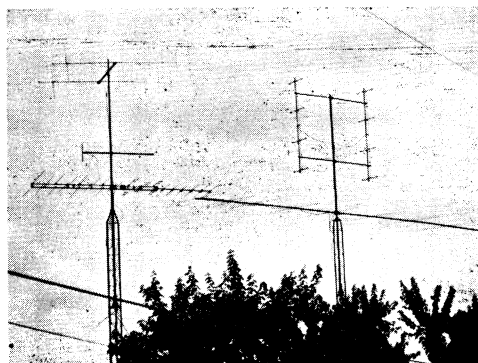
past few years has been interesting to watch. A-m contest activity above 145 MHz has greatly decreased but has been compensated for by an increase in ssb activity. Most of the contest activity is now in the 144.080-144.120 MHz segment. Here's my breakdown:"

144 cw - 67 432 - 35
144 sb - 19 432 - 6
145 am - 26 1296 - 6
145 sb - 20 all bands phone - 80
220 am - 9 all bands cw - 125
220 cw - 17

Thanks Pete, for the interesting comments. By the way, for those of you who don't know K1PXE, he's sightless.

K2OVS sent us an 8-chapter scenario about the September Party. We chose chapter 5 for everlasting fame and glory (?) :

Non-contester: "CQ, CQ, this is WA2XXX calling CQ two meters."



Some antennas at WB4JGG (Tenn.).

Contester: WA2XXX from K2OVS, how about a contest point?

N.C.: "K2OVS, WA2XXX. Good evening, old man, name here is . . . QTH is . . . Your signal is . . . My dog just had puppies . . . etc . . . etc. . . ."

(By this time I've QSYed and worked two other stations and come back just in time to answer him.)

Contester: "OK, Jack, what's your section?"

N.C. "What's a section? I live in Podunk Hollow."

Contester: "Your ARRL section."

N.C.: "What's ARRL?"

End of story.

QST for February, 1975, page 61, documents the all-time records for September QSO Parties. Several individuals and groups sallied forth this time around to break a few of those records: WB2GKE broke their own multi-op record of 1973 by 10,000 points; WA7NAN/7, WB6KBZ/6, and W4VO/4 all broke multi-op records in their respective divisions. In the single-op section, hilltoppers WA6JUD/6 and K6YNB/6 set new marks in the Pacific and Southwestern divisions. If there are a couple more records broken next September, we'll run the complete all-time record box again, suitably updated.

Thanks, everybody, for the pictures and comments. We're only sorry we couldn't print more. Get your requests for January Sweepstakes forms in now, and keep us busy afterward with more photos and comments. GL!

Soapbox

I nominate K1PXE for "best fist" award and W4DFK for "best ears." Too many candidates for "worst chirp" to decide on a winner. — (WB2CUT). [We bet K1PXE has a machine to send his code. —Ed.] Our portable site is on Pine Log Mt., elevation 2400'. We thought activity was above average. — (W4VO/4). Got three new states on 432, but not looking forward to January due to possibility of poor band conditions. — (W3TMZ). [Now, what kind of an attitude is that? —Ed.] Our portable operation is from Buck Mt., WA, elevation 4000'. Six meters was especially poor, limited to line-of-sight. Be back in June. — (W7FHZ/7). We object to the multiplier box in the write-up not giving totals for every band, even if the contestant only made the minimum on certain bands. —

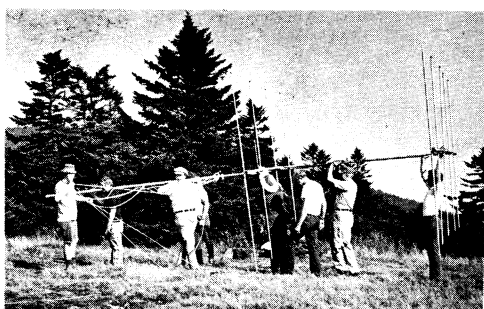
(W1MX). [OK, we get the message. — Ed.] Pleased to get all California sections from my spot in the south. — (WB60KK). Worked seven on two-meter EME, and expect this to be a very exciting mode in future contests. — (VE2DFO). Wow! 106 out of 176 two-meter OSOs were on cw. Got four on EME, also. — (K2RTH). Tropo was zilch, the E-layer was made of cement, scatter was about the worst seen in recent years, and to top it all off, we had lingering thunderstorms in the area both nights. This relatively low score from me has not put a damper on future contest participation, and station improvements will continue. — (WA4MMP). Almost sounded like a band opening on six until I realized it was just a lot of guys operating. — (WA4LDU). I'd like to see calling periods on various bands, to help concentrate activity. — (K9HDE). Nice to hear W1AW on 2 meters. — (W1WEE). First vhf contest getting all W1 and W2 sections, on two bands, at that! — (WA2GEZ). Never did hear any of the usual East Coast mountaintoppers on 432. — (K8UQA). [But he got Sweden and Japan on moonbounce. — Ed.] Lots of cw on 2 meters, otherwise activity down. Think the lack of a "real" announcement of the contest in QST hurt, too. — (W2EIF). [See item in "lead" story. — Ed.] I'm taking down my hf antennas to put up more for vhf, including a double rhombic for six. — (WB9ETQ). Six was so bad it was hard to hear Denver, only 70 miles away. — (WA8GUB/Ø). Conditions picked up Sunday night, unfortunately after most had ceased operation. W7CNK is worked here so consistently on EME it's getting to be "old hat." By the way, the secret of making a good amplifier is to put 150 screws in the lid so even Murphy can't get into it! — (K1WHS). Cw on 2 meters sounded like 40 meters. — (WA3KPS). My equipment has never been better, but the poor conditions resulted in my just barely bettering last year's score. — (K4MSG). Think activity in the Midwest would increase if the competition were separated by bands. — (KØDAS). Since six died, my score would have been really sad if it hadn't been for good old 2-meter amplitude modulation. — (WA8EUU). Only three years ago I was turning in division-leading scores without using any fm at all; now fm produces half my total contacts and even some multipliers not available on ssb. Unfortunately, it also produces some ill-will from non-contesters. — (K6YNB/6). Good activity at the low end of 2 meters. I suggest mountaintop beacons, probably from New England, one beaming north and one beaming south, to act as band-opening tip-offs. — (WA3NNZ). Thanks to WA1MUG for helping us work East MA, our final section. — (W2OW/2). Sounded like ssb and cw activity on 220 and 432 is going to rival two meters before long; I'll be ready next time. — (WA3AXV). Sure is a big difference being out in "the sticks" where there are no locals to work. — (W3HDH). Seems like the September Party is turning out to be an annual anti-climax to the June one. — (WB4VLH). I'm going to enter my log from now on, regardless of score, just to let you know I was in there. — (WA9LZM). [That's the spirit! — Ed.] It's hard to set big records from 4-land, but I'll keep trying! — (WB4JGG). Three separate electrical storms took place during the contest, making operating risky but exciting. Luckily, no power supply diodes lost. — (WA4GPM). Had some scatter and an inversion but ran out of stations to work. We're trying to get a permanent contest call. — (WA7NAN/7). Hope to have towers up and an amplifier going in January, if I don't operate at VE3ONT. — (VE3FVN). The only way to kill this group's enthusiasm is with a wooden stake. W3DQF was sending "CQ Test" while we were tearing down the equipment. — (W3GNR/3).



Stan, WA1LOU, is probably hard at work building a vertical by now. He operated 2 fm only after rig failure on 6.

WA4SIQ 741- 57-13-AB	K6YA/6(+W6OCP, WB6s LSN, QVVW, W8RPA) 3894-154-22-ABC	WA7UQV 140- 28- 5-AB	WB9GMC 192- 32- 6-A
W4WSF 693- 63-11-B		K7ZCB/7 14- 7- 2-AB	WB8HUC/9(+WB8s GEU, GEW, GEX, GEY, GFA) 3712-116-32-AB
K4MSC 429- 39-11-AB		WA7NAN/7(+K7KOT, W7s DNU, GLS, WA7WMD) 8759-437-19-ABCD	K9JRK/9(+WA9s DFZ, USE, WB9s ELY, HVJ, NAO, OKB) 560- 80- 7-AB
WB4NTV 140- 28- 5-AB		W7fHZ/7(+K7s IPQ, PHZ, WA7s IVQ, MHM, WMC) 5797-514-11-ABCDE	
WA4JLY 81- 27- 3-AB	San Diego		Wisconsin
WA4EPI 20- 10- 2-A	WB6NMT 1827- 68-21-BCD		K9OXY 407- 37-11-AB
K4IGB/4(+K4s CJZ, MOB, WA4IHA, WB4s EXW, IJT) 6600-300-22-AB	K6QWZ 455- 65- 7-B		WA9LZM 287- 41- 7-AB
W4QCW/4(+WA4s FMS, KNP, QDC) 4510-205-22-AB	WA6LDN 54- 9- 6-B		WB9OQD 117- 39- 3-AB
	San Francisco		W9DJ 18- 9- 2-B
5	W6KQG 2832-116-24-ABE	Michigan	
	WA6RNF/6(+WA6s KWN, QCR) 1972-110-17-ABC	WB8BGY 7913-187-41-ABD	0
Oklahoma	San Joaquin Valley	K8HWW 560- 40-14-B	Colorado
W5WAX(+K5s BXG, WVX) 3648-111-32-ABD	K6JKQ 4031-106-29-ABCD	K8LZF 308- 23-11-BCD	WA8GUB/0 10- 5- 2-AB
	WA6NRV 1992- 70-24-ABDE	WA8EUU 301- 43- 7-AB	W0DYB 10- 10- 1-A
	W6YKS 868- 62-14-AB	K8AJC 75- 15- 5-AB	Iowa
South Texas	K6ZMW 429- 33-11-AE		K0DAS 480- 40-12-B
W6GTJ/5 4- 4- 1-B	W6DPD 130- 13-10-AB	Ohio	
6	W6OAL/6 112- 14- 8-B	K8LEF 11,046-261-42-ABD	
East Bay	WB6YIK/6(+WB6HQU) 1660- 80-20-ABD	WB8IGY 3045-105-29-AB	
WA6JUD/6 13,079-392-29-ABCD		WA8RCN 754- 58-13-AB	
W6BXO 2034-101-18-ABC	Sacramento Valley	WB8RDY 507- 39-13-A	
WA6VEI/6(+WA6BMV, WB6s NOM, TYA) 4550-315-14-ABD	WB6NKO 1311- 62-19-ABD	K8UQA 418- 19-11-D	
	7	K5BWZ/8 60- 15- 4-AB	
Hawaii	Arizona	WA8PLZ(+G3PAC, K4GGY, W8s KPY, NKW, WA8s DZU, LHL, LTA, MCH, MSF, PAR, WB8s FLE, ILW, OFR, OOE, QOC, QVC, RKM) 28,408-523-53-ABCD	Kansas
KH6BZF 1- 1- 1-B	K90KW/7 1365- 63- 21- ABC	W8BAP(+K8SUB, WB8s BBP, GZL) 3696-176-21-AB	WA0TRO 4- 2- 2-B
	WA7UDV 319 29-11-AB		Minnesota
	WA7ZWO 171- 19- 9-A	West Virginia	K1WVE/0 108- 36- 3-AB
	W7KMV 120- 40- 3-AB	W8HAX 1740- 87-20-AB	Missouri
Los Angeles	Nevada	W4GKM/8* 612- 46-12-BCD	W0KCC 497- 71- 7-AB
WB6OKK 3894-102-33-ABCD	K6KLY/7 2812-134-19-ABCD	WA8UUY/8 22- 11- 2-B	K0TLM(+WB0ITA) 550- 50-11-ABC
WB6APP/6 1800-129-12-ABC	Oregon		Nebraska
WA6RAY 100- 20- 5-AB	WA7RTA 1485- 95-15-ABC		WA0MRH 10- 5- 2-A
	W7YR 737- 54-11-ABCD	Illinois	
Orange	K7HSJ 175- 32- 5-ABCD	W9KDR 1035- 69-15-AB	North Dakota
K6IBY 110- 11- 5-C	K7AUO/7(+W7s ADV, BKN, RPT, UDM, VRM, K7s IUN, UUH, WKT) 1417- 93-13-ABCD	K9HDE 798- 49-14-ABD	WB8TCY/0 80- 20- 4-AB
	K7WKT/7(+K7UUI) 78- 6- 6-ABCD	W9ABA 630- 45-14-AB	
Santa Barbara	WA7TZY(+WB7BST) 20- 5- 2-D	WA9LEF 594- 66- 9-B	Check Logs
K6YNB/6 16,564-363-41-ABCDE	Washington	K9KQR 396- 44- 9-B	KIAGB, WA1SHM, WA1SVF, WA2UXW/1, WA2UXW/1, WB6JNN/6, WB6RAB/6
	WA7PVE 200- 50- 4-AB	W9IVI 304- 38- 8-B	
Santa Clara Valley		K9DTB 70- 14- 5-AB	
K6QAX 3048-103-24-ABC		Indiana	
WA6GYD 1960- 80- 20-ABC		K9UVJ 3456-110-27-ABCD	
WB6KBZ/6(+K6GSS) 16,456-446-34-ABCD		WB9FTQ 1170- 90-13-AB	
		WB9CTP 632- 79- 8-AB	
		K9DZS 612- 51-12-AB	

*Indicates Hq. staff, ineligible for awards.



The Mecklenburg ARS, W4BFB/4, has been making big noises from North Carolina this year. Operating from Roan Mountain (elev. 6300') helps, as does having assistance from 18 club members. Here we see 5-over-5 on six assembled and ready to go up.