

# Results: 1975 VHF Sweepstakes

REPORTED BY JIM CAIN,\* WA1STN

**T**HIS WAS PROBABLY a typical winter weekend for vhf propagation; one when little or nothing would have happened without a contest. With a contest, everything happened — but not enough to flush out the casual participants whose activity is so important if any impressive statistics are to come out of the weekend. There was pretty fair winter tropo at intervals, with 144 and higher getting the best of this, of course. The 6-meter round-the-clockers caught enough sporadic *E* and morning scatter to make for some impressive section totals. But all things considered, one would have to say that it was a relatively quiet contest weekend.

Having set aside the weekend for contesting, not a few ops were taking it easy and engaging in the almost lost art of rag chewing on the vhf bands. Many find this one of the appeals of a contest weekend. One runs across people he hasn't talked to in a year, and a few, at least, are familiar names and calls from the earliest days of vhf communications. In this respect, the year-first-licensed check turns up some interesting reminders of the durability of amateurs in general, and those on the vhf bands in particular. Several checks in the "20s" were heard on the bands.

Although some will say this was a dull contest, and others will read into it signs of deteriorating vhf interest, if there had been just a little more of the various forms of DX propagation instead of just brief flashes of them, the log pile would probably have been much higher though it was pretty high to begin with! — *WIHDQ*

Perhaps the above doesn't sum up the contest in *your* vicinity, or in *your* opinion, but that's the danger of drawing conclusions in general about an activity that takes different forms in different locales. Perhaps the biggest reason for only two division records being set in 1975 was the lack of reliable 6-meter, long-distance propagation. In the write-up of the 1974 VHF Sweepstakes, the all time division leader box showed the year each record was set, and they were, for the most part, sunspot years. Even our vhf bands' ups and downs are dictated by Old Sol.

\* Asst. Communications Manager, ARRL.

WA6JUD, shown here, is the proud holder of the new Pacific Division record. Carl, a Northern Cal. Contest Club member, used 8 elements on 6, 11 elements each on 144 and 220, and a gain vertical on 450 and four-bay helicoil on 1296, in addition to the inside apparatus visible here.

The 573 entries this year were only slightly fewer than last year's 580. The average top-ten score this year for single ops was about the same as in 1974 and the top multi-op scores were down a little. Two interesting highlights of the 1975 VHF Sweepstakes were a "mini-VHF Sweepstakes," run by the York Radio Club (Illinois) in conjunction with the ARRL Sweepstakes (won by WB9NXXB) and an expedition in the dead of winter to Pack Monadnock, New Hampshire, by K1HJC and a non-ham friend. Certificates for this year's Sweepstakes are scheduled for mailing mid-July.

## Soapbox

Couldn't find instructions for performing a rain dance for an "E" cloud. — (K9UBF). Would like to see satellite QSOs counted in the SS, on a permanent basis; took time out during the 1975 event to work KL7MF on Oscar 6 for state number 49. — (W3BWU). Murphy bit me on 220 MHz when my receiver converter died the night before the contest. — (WA1QQV). Invested about \$500 in my new 2-meter fm station and made only 23 contacts with it during the contest! — (WB4JGG). We ran multi-op due to the channel 2 TVI problems in this area. — (K9TZZ/9). My first contest; 40-meter inverted "vee" worked fairly well on 6 meters. Thanks to the ssb boys who switched to am for a while. — (WA2WLH). Two-meter fm is alive in Detroit, had 41 contacts. — (WA8EUU). Running only ten watts keeps me out of channel 2. — (WA6JYU). Suggest instead of sending the "check" that stations be required to exchange jokes. — (WA3SXX). Suggest an additional point be made by each station if *one-half* of the contact is on cw; this would at least encourage some to copy the code, even if they are rusty and hesitate to send it. — (WA3TGR). Since activity on 220 and 432 are down in January, as compared to June and September, I suggest additional points or credit of some kind be given for activity on those bands in the January SS. — (WA2FZW). Suggest some rule changes to promote this contest among non-contesters; over 90% of my contacts didn't know a contest was in progress. — (K2YRZ/4). Since 1971,



I have worked 50 stations in the St. Louis area, but during the contest worked only one. Local activity in general not nearly as good as during the June QSO Party. — (WB4VLH). I suggest credit for contacts on 2 fm continue, but that greater point credit be given for more difficult "DX" work on 2, even when the contact is within the same section. — (K7ZCB).

### TOP TEN

#### Single

K3IPM 40,622  
K8LEE 33,626  
W3HQT 30,030  
W3HMU 26,460  
W3ZD 25,420  
WA3AXV 24,720  
WB2ZVS 24,430  
K3MWV 22,591  
WA1NGR 22,144  
K3ZSG 21,450

#### Multi

WB2WIK 41,220  
WA8NJR 40,850  
WA8TTS/8 38,052  
W3KKN 31,062  
WA2SNA 27,270  
WA8PLZ 26,340  
WA2KHL/2 21,866  
W4BFB 18,444  
K2CBA 16,608  
K1MNS 13,064

### Winter Mountain-Topping By Myrle H. Morgan Jr., K1HJC

The idea to operate from Pack Monadnock, NH, for the January VHF Sweepstakes originated in early fall of 1974. Frank Holt and I, both avid backpackers and winter hiking enthusiasts, thought that the "expedition" would be enjoyable, interesting and perhaps even unique, since not too many portable stations are heard during January VHF Sweepstakes, especially from the tops of snow-covered mountains. Initial plans called for the design and construction of compact, light-weight transceivers and antennas for six and two meters. Due to unforeseen circumstances (procrastination), we found ourselves one week away from contest time with little more preparation than a few pen scratches on paper.

The next few days were spent gathering available gear. My old Heathkit Twoer and vibrator supply were retrieved from a dark corner of the ham shack. W1CMV generously offered us the use of his 9-1/2-element yagi with one element broken during a previous outing on Pack Monadnock. My car battery, mounted in a styrofoam cooler, completed the two-meter station. K1HDO offered us the use of his HA-460 and collapsible four-element yagi for six meters. Our original intention was to power all equipment with a 12-volt car battery, to eliminate that infernal generator noise and preserve the peace and tranquility of the mountain. But because of the excessive power consumption required by the HA-460, I decided to bring my Tiny Tiger generator out of retirement for use in recharging the battery.

The last two days were spent checking equipment operation at temperatures expected to be encountered on the Pack. The transceivers functioned flawlessly and the generator started on the first pull. (Murphy was waiting for a more opportune time to inflict his infamous law upon us.) Everything was loaded into or onto the cars and we were ready for our assault on the Pack.

Last minute errands delayed our departure until early Saturday afternoon. We arrived at the parking lot at 1:00 PM and began transferring gear from the cars to the sleds, much to the amusement of curious on-lookers out for an afternoon hike. The last thing to be loaded was the 12-volt battery from my car. With everything lashed securely to

the sleds, Frank and I shouldered our packs, attached the sled tow lines to our improvised waist harnesses and began the one and one-half mile hike to the summit. The snow on the road was well packed by the many hikers who enjoyed hiking in the winter-time. After two or three premature stops (the sleds had a tendency to tip over at the slightest provocation, such as moving forward), we lashed the sleds together, side by side, to improve stability. With this problem solved, we proceeded, arriving at the summit at about 3:00 PM, somewhat winded and with very sore legs.

After recording our arrival on film (thanks to camera, tripod and ten-second timer), we unpacked and set up the tent and antennas. An eight-inch piece of plywood was our kitchen table, providing also a flat surface for our stove and transceivers, and accessibility from inside the tent. The generator and auxiliary gasoline container (2-1/2 gal.) were placed fifty feet away, and power lines run to the operating position. I had failed to locate the 12-volt power plug for the HA-460 so the six-meter rig would have to operate from 117 Vc supplied by the generator. So much for peace and tranquility. The sun was setting in the west as we declared ourselves ready for a record-breaking contest week-



end. It was at this very moment, I'm sure, that Murphy decided to make his presence known.

In order to start the generator, the manual priming button on the fuel pump is depressed several times until fuel is observed to be flowing to the carburetor. As you have probably guessed by now, depressing the manual priming button had no effect whatsoever on the gas in the tank. After several futile attempts at getting gas to flow, Frank applied mouth-to-gas-tank resuscitation while I pumped the primer. Eureka! We had gas flow. With choke on full, I firmly pulled the starter cord and the engine came to life — for about ten seconds. Further attempts at starting resulted only in coarse grinding sounds emitted from the recoil starter housing. It was time for major surgery. By the light of the Coleman lantern, we disassembled the starter and made what we hoped would be adequate repairs. Next, the fuel pump was disassembled to check for air leaks. After about one hour, the engine was back together. With two firm pulls, the engine came to life and settled into its noisy but steady beat. We were finally on the air. Time — 7:00 PM.

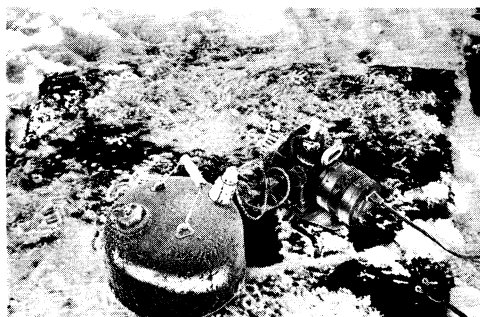
Our first contact was with W1FMF in Bedford, NH, on six meters. We had ten more QSOs on six before switching to two meters; generator hash and ignition noise made six-meter reception somewhat less than ideal. I shut down the generator at about 8:15 PM. (Ah! Peace and tranquility again.)

Our first contact on two meters was with W1BXM, who had been looking for us on the band since early afternoon. He ran phone patches for us so we could let friends know that we had arrived and were still in one piece. After signing with Guy, five more contacts were made before breaking for supper at 9:45 PM (our stomachs were protesting — we hadn't eaten a full meal since breakfast). We were severely limited on two meters because of the superregen receiver. Our apologies to the many stations that were calling. Two meters was really hopping.

Up to this time, we were operating outside the tent, squatting by the rig in a somewhat less than comfortable position. The temperature was dropping toward twenty degrees. After preparing the kitchen area for cooking, we retired to the tent and warm sleeping bags. After an enjoyable meal, the Twoer was brought inside, and three more QSOs were made on two meters. We shut down for the night at 11:30 PM. It had been a long day.

We awoke Sunday morning to a bright sunrise and an outside temperature of ten degrees with a moderate wind. The Twoer, which had spent the night outside the tent was completely covered with frost, but came to life at once after a light tap on the vibrator. Activity was sparse on two meters this early in the morning, but we made one contact before crawling out of the tent into the crisp morning air. I decided to start the generator and check six-meter activity. At the same time, the battery would be charging. Unfortunately, Murphy beat me to the generator. The manual priming button was gone; I found it about three feet away. It had broken loose from the pressure diaphragm and the coil spring beneath the button had launched it to its resting place in the snow. Oh well! There was already fuel in the line from the previous night's operation, so maybe it would start anyhow. Guess again! That ominous but familiar coarse grinding sound from the starter housing signaled the end to six-meter operation. The battery still had plenty of energy remaining, so two-meter operation could continue.

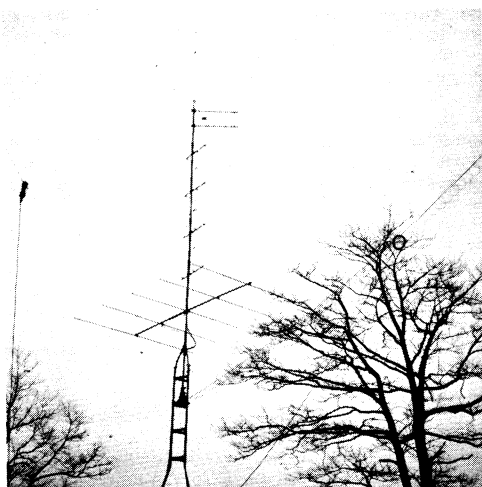
By 10:30 AM, two meters was hopping again. Unfortunately, the lack of receiver selectivity made it nearly impossible to work any but the strongest



stations and their calls were already in our log. By 11:00 AM, we had accumulated a grand total of twenty-one contacts in three sections. We had to work at least one more section. Hearing that WB2GLQ/1 would be on around noon from Hogback Mountain in Vermont, we left the Twoer in service while disassembling and packing the rest of the gear for the trek down the mountain. At 11:58 AM, we worked WB2GLQ/1 and we had our fourth section. After one more QSO, we shut down for good. By 2:00 PM, the sleds were packed and lashed together. We were ready for the hike down to the parking lot at the base of the mountain. We were assisted during the descent by friends who had hiked up to visit. They arrived just as we were departing. Their assistance was greatly appreciated, as they walked along side the sleds supplying greatly needed stability. We reached the bottom with no further interference from Murphy's law.

Despite our low score, the weekend was a resounding success. A few eyebrows were raised whenever we gave our QTH. "You're where? On the Pack? In January?" We gained valuable experience that can be applied to future winter vhf operations. Frank and I are looking forward to the 29th VHF Sweepstakes with an eye towards compact multi-mode transceivers, easily transportable antennas and, most of all, a more reliable power source.

Again, our thanks to all who contributed equipment, time, advice and moral support.



The antennas and station owner himself, Steve, WB2WIK, at this year's top multi-op.

# DIVISION LEADERS

Single Op.	Division	Multiop
K3IPM	Atlantic	W3KKN
K9UVJ	Central	K9HMB
W0PAN	Dakota	W0OHU
WB4JGG	Delta	WB4KMK
K8LEE	Great Lakes	WA8NJR
WB2ZVS	Hudson	WB2WIK
K0TLM	Midwest	W0JYJ
WA1NGR	New England	K1MNS
K7ZCB	Northwestern	WA7PVE
WA6JUD/6*	Pacific	WA6WSW
W4UCH	Roanoke	W4BFB*
WA8GUB/0	Rocky Mt.	.....
K2YRZ/4	Southeastern	.....
K6YNB/6	Southwestern	.....
W5UOJ	West Gulf	.....
VE2ADE	Canadian	.....

\*New record.

# AFFILIATED CLUB SCORES

## Club-Score-Entries-Winner

Mt. Airy VHF RC (Pa.)	564,565	166	K3IPM
Rochester VHF Group (N.Y.)	344,386	127	K2YCO
South Jersey Radio Assoc.	183,882	28	W2BV
Mobile Sixers RC (Pa.)	115,573	41	K3ATL
Suburban ARC (Pa.)	47,200	10	WA3NVO
Potomac Area VHF Society (Va.)	37,002	8	K3DUA
Hampden County RC (Mass.)	35,394	11	W1MTV
York Radio Club (Ill.)	24,704	11	WB9NXB
Dutchess County VHF Society (N.Y.)	17,153	4	W2AWX
Six Meter Club of Chicago	15,168	13	W9RVG
Gloucester County ARC (N.J.)	13,344	4	WA9FIH
Northern Calif. Contest Club	13,229	3	WA6JUD/6
Scioto Valley ARC (Ohio)	12,738	6	K8SUB
Southern Calif. VHF RC	12,242	5	K6YNB/6
West Jersey Radio Amateurs	11,708	3	.....
Greater Pittsburgh VHF Soc. (Pa.)	8625	5	W3BWU
Rancocas Valley ARA (N.J.)	6934	3	W2PZF
Dayton ARA (Ohio)	6770	4	WA8BOB
Warren ARA (Ohio)	5254	4	WA8KUR
Dept. of State ARC (D.C.)	3144	4	W4HU
Lake Success RC (N.Y.)	2312	4	K2IJL

VE	Quebec	6	2-B
VE2ADE	768	24	6-B
VE2DQE	144	6	2-B
VE2AKF	66	3	1-B
Ontario	22	1	1-A
VE3AQJ	22	1	1-A

1	Connecticut	18,000-302-20-ABC
WA1NGR	22,144-346-22-ABCD	
WA1IQJ/I	18,000-302-20-ABC	
WA1IOX (K1ZND, opr.)	4326-103-11-ABC	
WIHDQ*	3026-67-13-AB	
WA1FFO	1518-33-13-B	
K1TZD	1024-32-6-ABC	
WA1LOU	930-31-5-AB	
WIWEE	700-25-4-B	
WA1PVV	576-18-6-AB	
WA1GTP (+K1VYU)	8500-171-15-AB	
K1MUJ/I (K1JFF WA1S HYN	5060-115-12-AB	
MDQ QBD)	5060-115-12-AB	

Eastern Massachusetts	7350-175-11-AB
WA1MSK	7350-175-11-AB
WA1KIR	6960-146-14-AB
WA1MJD	6200-125-15-B
WA5IOD/I	3492-97-8-ABCD
WA1MKE	3287-87-9-A
W1MX (W2QHQ, opr.)	2840-71-10-AB
K1CHY	2698-71-9-ABCD
WA1HON	2550-70-8-ABC
WA1QQV	2480-78-AB
K9AQP/I	1548-43-8-ABCD
WA1LXP	1232-44-4-AB
W1IOO	962-37-4-AB
WA1FCD	840-28-5-A
WA1RGA	696-29-2-AB
K1VUT	650-25-3-AB
W1AAR	313-12-3-B
W1LMU	312-12-2-B
W1JAA	225-8-5-D
W1GXT	168-7-2-CD

New Hampshire	7992-150-17-ABD
WA1OUB	7992-150-17-ABD
W1EUI	7410-144-16-ABCD
W1PMF	4313-114-9-ABCD
W1BDC	2622-69-9-A
WA1FSZ	2356-63-9-ABD
W1JSM	2136-45-14-B
K1MNS (+K1S HZN PLX W8GIM)	13,064-284-13-ABD
W1JJO (K1S CYP VOF WPM	W1KGZ WA1TOB)
K1HJC/I (+F. Ho)	8702-229-9-ABC
W1EUI	686-25-4-AB
Rhode Island	1600-40-10-B
W1CPC	1600-40-10-B

Vermont	3230-85-9-AB
WB2GLQ/I	3230-85-9-AB
K1GYT	448-14-6-AB

Western Massachusetts	10,868-209-16-AB
WA1HHN	10,868-209-16-AB
W1MTV	10,608-204-16-AB
WA1OLK	1886-41-13-A
K1NJC	896-28-6-AB
WA1SOF/I	546-21-3-AB
W1ALL	456-19-2-AB
K1EPI	288-12-2-B
WA1CYK	288-12-2-B
W1UWX	144-6-2-B
W1UWX/I	130-5-3-B
WA1SOF	120-5-2-B
W1KK/I (+W1UWX WA1S ECR	LPI RWU)
11,050-213-16-AB	

2	
Eastern New York	
WB2OTK	12,512-186-24-AB
W2AWX	7124-137-16-AB
W2CXC/2	5405-118-13-AB
K2BGU	5150-103-15-AB
WB2YQU	3652-83-22-AB
W2KBH	972-27-8-B
WA2TQO	448-14-6-A
W2IP	300-10-5-B
K2CBA (+WA2VOB WB2S BYP DNE)	16,608-261-22-AB
WA2BLM (+WA1PDK K2S IOM OYG WA2S ZPD WB2S FZE OZA SGN)	13,000-250-16-ABC
W2AIR (WA2S LQP THT WA7VYQ)	1395-47-5-B

N.Y.C.-L.I.	7888-136-19-B
WA2VFA	7888-136-19-B
K2OVS	5346-99-17-ABD
WA2EUS	896-28-6-BD
K2IJL	810-27-5-BD
K2RIW	680-20-7-D
WA2SRH	640-20-7-D
W2TNI	572-22-3-B
W2NBI	510-18-5-B
W2MI	420-15-4-B
WA2TLM	286-11-3-B
WA2EXP	156-6-3-B

Northern New Jersey	24,430-349-25-AB
WB2ZVS	24,430-349-25-AB
WA2FZW	10,920-210-16-ABD
WB2CUT	5500-126-12-B
WA2CWA	4224-96-12-A
WA2GEZ	4032-96-11-B
WA2VYA	3276-91-8-AB
WA2WSR	2628-73-8-B
WA2FCW	2380-70-7-AB
W2CVW	2220-56-10-ABD
WA2YGR	2091-63-7-B
K2RLW	1316-48-4-B

W2ODV (WA2FUL, opr.)	1292-38-7-B
WA2GFN/2	1092-39-4-B
WB2TMD	1003-30-7-AB
WA2NTI	840-30-4-B
WA2ALD	540-18-5-B
WB2VLC	234-9-1-B
WA2FAX	182-7-3-AB
WB2WIK (+K2OWR WB2S CST	UIJ)
41,220-576-26-AB	
WA2SNA (K2BJG WA2S AJS	NPK SLR WB2S BEA LPX QEA
QOQ RIU)	27,270-505-17-ABCD
WA2KHL/2 (WA2UDT WB2S	LDE LYP VPO)
21,866-377-19-ABD	

Southern New Jersey	21,431-370-19-ABCD
W2EIF	21,431-370-19-ABCD
W2BVT	18,000-300-20-AB
WB2MTU	17,458-301-19-AB
WA2EMB	17,361-322-17-ABCD
W2PAU	15,903-294-17-ABC
W2REB	11,700-234-15-AB
W2EA	11,484-261-12-AB
WB2BNE	10,764-207-16-AB
W2FYS	10,660-205-16-AB
WA2KOK	8418-183-13-AB
W2EPA	7938-189-11-AB
WB2BZY	6660-222-5-AB
W2OSD	6510-155-11-AB
WB2NPY	6080-190-6-AB
W2ORA	6000-200-5-AB
W2EKB	5760-180-6-AB
W2GIA	5460-130-11-B
WA2YSW	4902-129-9-AB
WA2BPF	4312-154-4-AB
WB2OSQ	4200-150-4-AB
W2TQ	4160-130-6-AB
WB2SPJ	3600-100-8-AB
WA2EFV	3444-123-4-A
WB2PZF	2800-100-4-A
W2FGY	2688-96-4-B
WA2OZQ	2626-101-3-AB
WB2EFL	2538-79-6-AB
WB2WRP	2496-78-6-AB
K2EYW	2464-56-12-B
W2ITG	2304-96-2-AB
W2BAY	2002-77-3-ABC
WB2WXK	1950-75-3-B
W2FDJ	1800-75-2-A
WA2SEA	1716-66-3-AB
WB2IJN	1508-58-3-A
WB2VLD	1368-57-2-AB
W2HX	1300-50-3-AB
W2FBF	768-32-2-A
WA2HJF	650-25-3-B
K2JOC	630-21-5-B
W2HBE	360-15-2-AB
W2AXU	252-9-4-ABC
W2SDB	216-9-2-B
WB2NPY/2	44-2-1-B
W2JUG/2 (K2S QJN QPS	W2EWO WA2S HJF IVO LUR
WMK WB2S ANJ ECF IOE LBT	LCC LLF)
9108-253-8-ABD	

Western New York	14,508-279-16-AB
K2YCO	14,508-279-16-AB
WA2TEY	9476-206-13-AB
K2CEH	8944-172-16-B
WA2ZNC	7378-217-7-AB
W2SNS	6760-169-10-AB
WB2JRL	6256-187-9-AB
WA2THS	5724-159-8-AB
K2LPU	5700-150-9-AB
W2OWF	5576-164-7-AB
WB2ZFS	5550-185-5-AB
K2RZI	5400-180-5-AB
WA2KND	5160-172-5-AB
WB2YHD	4794-141-7-AB
W2RIS	4320-144-5-AB
WB2RJB	4147-160-3-AB
WA2AIW	4074-146-4-AB
W2EQW	3960-180-1-AB
W2MPM	3888-162-2-AB
K2RHS	3864-138-4-AB
WA2YEK	3864-138-4-AB
WB2JRX	3744-144-3-AB
W2SNA	3674-167-1-AB
WB2VPK	3432-143-2-B
W2ECH	3416-122-4-AB
W2DUC	3384-141-2-AB
K2WVW	3360-140-2-AB
WB2SLM	3318-79-11-B
K2OEQ	3264-136-2-AB
WA2YTK	3240-135-2-AB
WB2VSE	3168-132-2-B
WA2QAU	3144-131-2-AB
W2SNI	3120-130-2-AB
W2VWV	3120-104-4-AB
WA2CER	3102-141-1-AB
K2YAH	3048-127-2-B
W2QY	3024-126-2-AB
WB2YJH	3016-116-2-AB
WB2GGM	3014-137-1-AB
WA2TJS	2860-130-1-AB
WB2WA	2860-130-1-AB
WA2EKN	2844-119-2-B
WA2JFM	2816-128-1-AB
K2JUT	2772-126-1-AB
K2YMM	2760-115-2-AB
W2EMY	2750-125-1-AB
WB2EDT	2712-113-2-AB
WB2KWZ	2664-111-2-AB
WB2QVH	2664-111-2-AB
WB2NFI	2624-82-6-A
W2DBU	2592-108-2-B
WB2NOJ	2552-116-1-AB
WB2HDK	2508-114-1-B
W2ECM	2496-104-2-AB
K2UXF	2448-102-2-AB
W2ZZS	2341-111-1-B
W2FDI	2398-109-1-AB
WB2LAD	2354-107-1-AB
W2SFA	2352-98-2-AB
K2GMZ	2332-106-1-AB
W7JRL/2	2332-106-1-B
K2JIA	2288-104-1-AB
WA2NGH	2288-104-1-B
WA2SRV/2	2288-104-1-B
K2CJL	2266-103-1-B
W22YPT	2222-101-1-AB
WB2MDB	2200-100-1-B

K2SQI	2156-98-1-AB	K3ACR	12,120-303-10-ABC	K3MTK (WA3s PUL TV2)	4556-134-7-AB	Northern Texas	
WB2JMX	2134-97-1-1B	WA3PUL	10,780-245-12-ABD	W3LP (W3s GFN JUZ)	7-AB	WSUOJ	2262-87-3-AB
WB2WQJ	2106-81-3-B	W3IUZ	10,258-223-13-ABC	W3LUL (W3s PUL TV2)	4312-154-4-AB	WBSFCR	176-8-1-A
K2RUE/2	2068-94-1-B	W3LUL (WA3PUL, opr.)		WA3SPR (+K3DLS)	3528-126-4-ABC	Southern Texas	
WB2HTH	1958-89-1-B	W3ELX	9760-244-10-AB	WA3HVL (+K3DLS)	2886-111-3-AB	WASZNY	900-30-5-AB
W2RBT	1920-80-2-A	W3JEF	9280-232-10-AB			KSPFL	66-3-1-AB
WB2AMC	1826-83-1-AB	W3JAF	8694-207-11-ABC			6	
W2SRP	1824-76-2-B	K3GAS	8424-234-8-ABCD			East Bay	
WB2MCP	1800-75-2-AB	W3HK	7848-218-8-AB			WA6VEF	4004-154-3-B
WA3GVQ/2	1740-73-2-B	K3DMA	7350-245-5-ABC			K6BE	240-10-2-A
WA2YSG	1694-77-1-AB	K3KTY	7220-190-9-ABC			W6RGG	22-1-1-B
W2BLU	1680-70-2-B	WA3OVH	6838-263-3-AB			Los Angeles	
LUTAEK/W2		W3BBB	6760-160-11-AB			WB6IMV	864-27-6-AB
		W3ETB	6660-222-5-ABC			WB6YVP	650-25-3-AB
WA2SDK/2	1628-74-1-B	W3CXU	6657-159-11-ABC			K6BPC (WB6IMV, opr.)	448-16-4-AB
WA2SSU	1584-72-1-B	K3MXX	6592-206-6-ABC			WB6ICD/6 (+WB6PJM WB6WUW)	2055-69-5-ABC
W2YBK	1562-71-1-AB	WA3IEM	6426-154-11-AB			P. Jenzon	2055-69-5-ABC
WB2KLD	1480-37-10-AB	K3EPB	6422-169-9-ABC			Orange	
WA2BQA	1474-67-1-AB	W3GEW	6210-207-5-ABC			K6YNN/6	8930-235-9-ABCD
WB2FZB	1452-66-1-B	K3IGX	6188-221-4-ABC			WB6IDK/6	1350-45-5-ABCD
K2ZCU	1430-65-1-B	W3CJU	6176-193-6-ABCD			WB6IMV	864-27-6-AB
WA2BEH	1392-59-2-AB	WA3KPS	5792-181-6-B			WB6YVP	650-25-3-AB
WB2JGV	1344-48-4-AB	W3CXX	5554-189-5-ABC			K6BPC (WB6IMV, opr.)	448-16-4-AB
WA2RPT	1342-61-1-AB	W3JMM	5516-197-4-AB			Santa Clara Valley	
WB2DPT	1342-61-1-AB	W3YXF	5510-145-9-ABC			WA6JUD/6	12,255-323-9-ABCD
WB2EUE	1342-61-1-AB	WA3IGY	5440-160-7-AB			WB6KBZ	878-221-9-ABCD
WA2GCX	1320-60-1-B	W3AWA (WA3JMM, opr.)	5320-190-4-AB			K6GSS	8136-228-8-ABCD
WB2NJE	1320-60-1-B	WA3AQA	5278-203-3-AB			WA6UAM	3600-100-8-ABCD
WA2MBW	1298-59-1-B	W3BRU	5270-155-4-AB			WB6KAP	3420-114-5-ABCD
WB2HJN	1298-59-1-A	WA3NUG	5206-137-9-AB			WB6FFC	3400-100-7-AB
K2UCI	1276-58-1-B	WA3DJF	5200-200-3-AB			W6OCP	2432-76-6-ABC
W2ZHB	1254-57-1-B	K3GOZ	5096-196-3-AB			WA6HAN	1440-48-5-B
WA2YYZ	1254-57-1-B	K3EOD	4950-165-5-ABC			WB6JNN/6	650-25-3-AB
W2CJQ	1176-49-2-AB	WA3IDQ	4144-148-4-ABC			W6R1	408-17-2-B
K2LCS	1144-52-1-AB	K3MUA/3	4125-138-5-ABC			K6GI	22-1-1-B
W2EBF	1144-52-1-B	W3FQD	4064-127-6-ABC			WA6WSW/6 (WB6s HWO RGR WLE)	4448-139-6-ABCD
WA2DRC	1144-52-1-A	K3YND	4020-134-5-AB			San Diego	
K2EAW	1128-49-1-A	K3HIN	3808-137-4-ABC			WB6NMT	1840-58-6-ABCD
WA2HTR/2	1078-49-1-B	K3NMN	3724-133-4-AB			San Francisco	
WA2NFY	1056-48-1-B	WA3SLT	3562-140-3-AB			WB6QVW/6	3390-113-5-AB
WA2IJC	946-43-1-AB	W3CLT	3400-100-7-ABC			W6OAT/6	952-34-4-B
WA2GHQ	902-41-1-B	K3VYG	3380-130-3-A			WA6JYT	810-27-5-AB
W2UAD	858-39-1-B	WA3EPS	3360-120-4-AB			W6FAW	266-10-4-AB
WB2ZIJ	836-38-1-A	W3NJS	3354-129-3-BC			W6KHI/6	72-3-2-B
WB2LYH	768-32-1-B	W3RMI	3300-125-12-ABC			San Joaquin Valley	
WA2DFK/2	726-32-1-B	W6AB/6	3154-86-19-AB			WA6OSX/6	5066-149-7-ABD
WA2MKX	726-32-1-B	WA3PNW	2822-83-7-A			W6YKS	2546-67-9-AB
WA2WLH	720-30-2-AB	W3NHX	2808-108-3-AB			K6ZMW	1634-44-9-AE
WA2YRH	704-32-1-AB	WA3JSR	2808-108-3-AB			K6QHC	1080-27-10-A
W2ICE	660-30-1-AB	WA3LGC	2808-108-3-AB			Sacramento Valley	
WB2DNW	660-30-1-AB	WA3MRV (K3ATL, opr.)	2700-90-5-AB			WB6NKO	1904-56-7-ABD
W2EOJ	624-26-2-A	W3QXV	2604-93-4-A			WA6UOS	1092-39-4-B
WB2PSA	594-27-1-B	WA3NFV	2568-107-2-ABD			7	
WA2ECD	374-17-1-A	WA3JNF	2520-90-4-AB			Oregon	
WA2AQW	352-16-1-A	WA3NQY	2212-79-4-A			K7ZCB	1008-42-2-ABC
WB2LIN	330-15-1-B	K3BOY	2002-77-3-AB			Washington	
W2WGL	224-7-6-B	W3ZOR	1872-78-2-A			WA7PVE (+J. Baskett)	1056-44-2-B
WA2DFF	132-6-1-B	W3OUC	1706-74-2-A			8	
W2UTH (+K2ZFV WA2RHW)	8694-207-11-AB	WA3MRU	1736-62-4-A			Michigan	
		WA3UOC	1680-60-3-AB			WB8BKC	4862-143-7-AB
W2OW (WA2s IWO MSQ RBJ WB2s LNX RBA WN2s SGS YCW)	7450-149-15-AB	K3GZT	1586-61-4-B			WB8IYA	3876-102-9-A
K2MPE (+WB2TGU)		K3DLS/3	1560-60-3-AC			WA8EUE	2624-82-6-AB
		WA3TUL	1512-63-2-A			WB8TGY	1248-39-6-A
WA2MQX (+WA2AGE WB2EUE)	6930-165-11-AB	WA3WAK	1368-57-2-A			WB8EIJ	990-33-5-AB
		WA3NKO	1326-51-3-AB			W8HTL	986-29-7-B
WA2EKR (multipoint)	4536-162-4-B	WA3NBQ	1326-51-3-AB			WB8QB/8	689-27-3-B
		WA3TDR/3	1300-50-3-A			W8YDK/8 (WA8s TMP WOQ YUZ WB8s LCN OTAs)	4500-125-8-AB
WA2EJY (WA2EKR WN2UTM C. Holdsworth G. Holdsworth)..	4248-177-2-AB	K3IDM	1274-50-3-A			Ohio	
		W2GGB	1272-53-2-B			K8LEE	33,626-391-33-AB
WA2KUR (+WA2NZO)	4224-176-2-AB	K3VEE	1248-48-3-BC			WB8AMI	7272-202-8-ABD
		WA3ITC	1176-42-4-A			K8SUB	5664-118-14-AB
WA2RQC (+K2RKW WA2TOI WB2FBP)	3432-143-2-AB	WA3QYT	1170-45-3-AB			WA8STX	5304-156-7-AB
		W3QYE	1120-40-4-AB			WASHPY	4968-108-13-AB
		K3KEL	969-26-9-AB			WA8BOJ	3510-98-8-AB
		W3KKH	960-40-2-A			WB8GZL	3400-100-7-AB
						W8MLV	2560-81-6-AB
		WA3KOL	884-34-3-A			WB8GTY	2278-67-7-AB
		W3HKZ	840-35-3-AB			W8SPAT	2040-60-7-AB
		WA3BTE	832-32-3-AB			W8ZOF	1984-62-6-AB
		WA3VJY (WA2BCY, opr.)	832-32-3-B			W8NWK	1976-77-3-B
		WA3KEF	806-31-3-AB			K8BBP	1984-62-6-AB
		W3KM	768-32-2-B			K8CKY	1170-39-5-A
		WA3TEM	768-32-2-ABC			WA8RCN	1120-35-6-A
		WA3PSA	744-31-2-A			W8NTY	1056-48-1-B
		WA3JEL	744-31-2-A			W8TYF	900-60-5-AB
		W3QB	456-19-2-BC			WB8PLR	840-28-5-A
		WA3EPS/3	264-11-2-B			WA8KUR	744-31-2-B
		WA3QZJ	264-11-2-A			WB8BP	648-27-2-A
		WA3RTC	264-11-2-A			WA8LXJ	504-21-2-AB
		WA3QZF/3	198-9-1-A			W8RKAQ	352-11-6-B
		K3ZKO	192-8-2-B			WB8GZM	242-11-1-AB
		K3ORV	154-7-1-AC			9	
		W3OR	132-6-1-A			Virginia	
		W3PST	132-6-1-B			W4UCH	7176-138-16-ABCD
		W3LRH	110-5-1-A			W4DFK	5400-127-15-B
		K3MUA	66-3-1-A			WB4YFT	3060-85-8-ABC
		WA3KOL/3	66-3-1-A			WA4SIO	2926-77-9-AB
		WA3TEM/3	66-3-1-B			K4LHB	2888-76-9-ABC
		WA3QZF (K3ATL, opr.)	44-2-1-AB			K4FTO	1680-42-10-B
						W4HU	1416-59-2-B
		W3KKN (+K3KMN)	31,062-501-21-ABCD			K4MSG	868-31-4-AB
		WA3FOF (+K3DLS WN3YLZ)	9320-233-10-AB			K4PIV/4	744-31-2-AB
		WA3MPO (+WA3s IFL OJB OTI)	8184-186-2-AB			K4SD	5400-127-15-B
		W3SDZ (+WA3s WID WLU)	7986-121-23-AB			WA4EPI	48-2-2-A
		WA3KFT (+WA3TDR)	7974-222-8-AB			WB2LAI/4 (+WB2PRI WA4s DOX GPM)	4978-131-9-AB
						K4ZKU (+WB4RDT)	3000-75-10-AB
						5	
						Louisiana	
						WA5UUD	425-13-7-A
						WASQBx	308-11-4-AB

W8JRN 220- 10- 1-B  
 K8WYY 198- 9- 1-B  
 K8BXT 192- 8- 2-B  
 WA8NJR (+WB8IGY Barb Rose)  
 40,850-475-33-AB  
 WA8TTS/8 (+K8s ETI MMM  
 WB8s JNS KRY)  
 38,052-456-32-AB  
 WA8PLZ (K8s DCM TQK W8s  
 DJY KPY WA8s DZU LTA MSF  
 SVV WB8s MVR ONY QQC  
 QUC YAB K9DZK G3PAC)  
 26,340-439-20-AB

#### West Virginia

WA8UUY/8 240- 10- 2-B  
 WA8DQR/8 (+W8JJG)  
 5040-120-11-AB

9

#### Illinois

WA9LEF 4420-130- 7-AB  
 WB9NXB 4394-169- 3-AB  
 W9RVG 3750-125- 5-AB  
 WA9FIH 3750-125- 5-ABD  
 WA9RIJ 3660-122- 5-AB

WA9NRI 3600-120- 5-AB  
 K9DTB 3296-103- 6-AB  
 W9DJZ 3104- 97- 6-B  
 WB9IPH 2716- 97- 4-AB  
 W9MLU 2280- 76- 5-AB  
 K9JFN/9 1992- 83- 2-AB  
 W9IVI 1650- 55- 5-B  
 W9DBJ 1482- 57- 3-AB  
 K9KQR 1360- 40- 7-B  
 WA9KAN 1232- 56- 1-B  
 K9ZWU 1210- 55- 1-ABD  
 K9ZWV 1210- 55- 1-ABD  
 WA9OHU 1104- 46- 2-B  
 WB9KHR 1100- 50- 1-A  
 WB9LWI 696- 29- 2-B  
 WA9UQO 574- 21- 4-B  
 W9KDR 546- 21- 3-AB  
 W9WIC 462- 21- 1-B  
 K9EFU 336- 14- 2-AB  
 W9KBU 308- 14- 14-B  
 W9WIC/9 264- 12- 1-B  
 W9USJ 242- 11- 1-B  
 K9DKI 198- 9- 1-AB  
 W9ZYL 198- 9- 1-B  
 K9ZWU/9 154- 7- 1-B  
 WA9FIH/9 110- 5- 1-B  
 K9DNW 66- 3- 1-B

WA9ZFR 44- 2- 1-B  
 K9HMB (+WB9CAS)  
 11,960-230-16-ABCD  
 W9BGX (WA9s KIO ULU)  
 7191-212- 7-AB  
 K9TZZ/9 (WA9s NFO PQY WB9s  
 GEN IWN IWO JRA JSR KLW  
 KXI Curt)  
 6876-191- 8-ABCD  
 K9ONA/9 (K9s ZWU ZWV)  
 726- 33- 1-AB  
**Indiana**  
 K9UVJ 6840-171-10-ABCD  
 K9UBF 4862-143- 7-ABD  
 WA9MEM 2340- 78- 5-A  
 WB9GMC 1950- 65- 5-A  
 WB9CEP 1596- 57- 4-B  
 K9EFX 1440- 48- 5-B  
 W9CGI 1200- 40- 5-A  
 K9UNM 240- 8- 5-B  
 WB9JDL 108- 5- 2-B  
 WB8HUC/9 (WB8s GEU GEX  
 GEY GFA)  
 2516- 74- 7-AB

#### Wisconsin

WB9OQD 78- 3- 3-B  
 W9KNH 72- 3- 2-A

0

#### Colorado

WA8GUB/0 22- 1- 1-A  
 K0SQG 22- 1- 1-C

#### Kansas

WB0BBC 448- 32- 4-AB  
 W0JYJ (+WB0EYS)  
 336- 14- 2-AB

#### Nebraska

WA0MRH 480- 16- 5-A  
 W0EKB 300- 10- 5-A

#### Minnesota

W0PAN 44- 2- 1-B  
 W0OHU (+WA0QWY)  
 300- 10- 5-BC

#### Missouri

K0TLM 1904- 60- 6-AB

#### Check Logs

W2HF K4EJQ

**QST**