

Results:



*1975
ARRL
International
DX
Competition*



PJ2VD

REPORTED BY JIM CAIN,* WA1STN
and JIM WHITE,** WA1NNC

PJ2VD, PICTURED ABOVE, exemplifies a spirit which was overwhelmingly evident among participants in the 1975 ARRL DX Competition; Joeke set a new all-time South American cw record despite poor conditions. He continued a tradition begun many years ago by "Deserving DXers," as a popular DX Bulletin calls them, of making the best of less-than-good odds. The former S.A. record, which Joeke broke, was set by Fred Laun as LUSHF1 last year, under not-worth-writing-home-about propagation. We have decided to retire Griznoid and not worry about his infernal sun-spots.

In the past, when changes have been made in contest format, we have had to start over keeping records and statistics. The new high- and low-band categories of competition begun this year should not create such problems, however. We shall provide some all-band statistics for your information, relating participation and achievements this year to past events. The high- and low-band records made this year are, of course, all-time records and you may enter them in your notebooks accordingly. If the accent of this writeup seems to be on the all-band competition, it is because that traditional aspect of the ARRL DX Competition was chosen by the majority of the participants. Next year we can discuss high and low band compared to 1975.

Total-entries data is as follows: 1973, 2107; 1974, 1971; 1975, 1835. The all-time record was 2822 logs received for the 1970 DX Competition. The reason for the down-trend is, of course, worse conditions. Many comments on logs received this year were to the effect that the "little guy" really suffers most when the ionosphere is uncooperative. Suddenly, that vertical or dipole isn't good for 50

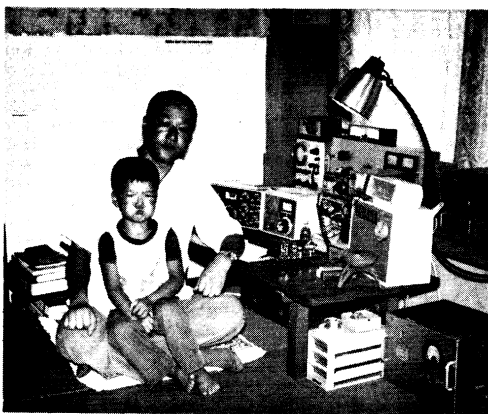
or 60 countries on 10 and 15 meters like it was five years ago. As a result, the stations which aren't super-equipped are capable of making perhaps one-tenth of the contacts they could have made easily in 1970. Operators of those stations accumulate only a page or so of contacts and don't bother to send a log in. This applies to both W/VE and DX participants, naturally.

Total phone logs this year: 897; total cw: 938. All-band accounted for 1140 out of the 1835, while high and low-band entries numbered 530 and 165, respectively. A word about these totals is in order, to keep things in perspective. Many entrants did not *specify* entry in one of the specialized categories, even though their operation was concentrated in, say, the low-band area or the high-band area. If an entry was confined solely to low bands or high bands, it was automatically placed in that category for scoring and listing purposes. This is an important point because it underscores the fact that there was not that much actual competition in the specialized classes in 1975, i.e., there were few all-out efforts to achieve a certain score, for instance. Part of this stems from the lack of past experience on which to base our efforts. No one knew what an outstanding low- or high-band effort would be. Next year, with the 1975 benchmarks to go by, competition will probably pick up.

A few efforts by the specialists stand out: the K6SVL high-band phone score of over 900K points would have placed seventh nationally in the *all-band* listing. WA8ZDF's big yagis for the high bands remained deenergized while Doc applied it to a 3-element rotary on 40, a Hy-Tower on 75, and a dipole on 160, talking his way to the best score in the low-band phone listing. W1EBC managed over 90 multipliers on 75 during his low-band effort, a figure rivaling the multi-operator stations.

* Asst. Communications Manager, ARRL

**Contest aide, ARRL



"We're not going to take these rotten conditions sitting down! — JAØAT

In the low-band cw division, K6OVJ grabbed top spot, thanks to a hoard of Japanese contacts on 40, followed by K5ABV with a nice combination of multipliers and QSOs, with K1NOL close on his heels. High-band cw provided an interesting race between the "coasts," with W2GXD the winner over K6SDR by virtue of about a dozen extra multipliers. The scores are now there to shoot for . . . one can only wonder how many, if any, of the top scores from this year will hold up through the 1976 Test.

Anyone with a \$19.75 pocket calculator can dig out the last few years' worth of QSTs, turn to the DX Competition writeups, and begin turning out statistical comparisons. We'll try to give you a sample, and go from there when you're looking for something to do on a non-contest weekend. The average score on cw among 1975 Top Ten operators was 1.2 million, down from 1.375 million in '74. On phone, the calculation is 1.241 megapoints, up from 1.134 in 1974. 1974 will go down in history as one of the worst years on record for phone conditions, both weekends. Things weren't so bad this year, perhaps.

Many individual performances were outstanding this year, and most can be found by scanning the various "leader" boxes in this report. A few valiant efforts were buried among the general listings, however, and we'd like to bring them to your attention. As you can see, the top DX scorers are primarily in North and South America and in Hawaii, where the competition was especially fierce. Lest we forget those DX stations who are located out of the favorable areas but who still accomplished much, we offer the following: 5T5CJ, a million points on cw and a half-million on phone; JA2JW, number one both modes, and UAØFGM, number two, from Asia; CT2BN with over a million cw points; ZL3GG, a truly superlative million-pointer on cw and over 300K on phone; ZL1AFW with over 1000 cw contacts; ZS6DW made over a million points on ssb, including oh, so many on 75 and 40; VK4VU managed over 800 contacts on phone. None of the aforementioned appear in the "Top Ten" boxes, but can be found in a potful of W/VE logs.

On the low-band front, we would draw your attention to JR1BRV, cw, and FØAXP, who made 301 contacts on 40 and 80 the second cw weekend operating as C31IU. His card will be showing up in many future 5-band DXCC applications! Outstanding low-band phone tallies came in from JA1ELY, EA4LH, and JA2IYJ, among others.

Top DX high-band cw scores came from KH6s IGC and IEG, followed by CP1EU, KH6IAC and JA2MGE. HC1BU and KP4EAS continued the Western Hemisphere monopoly, running off with the two best high-band phone scores.

On cw (all band), K2SIL operated one weekend using KH6RS and made a Top-Ten score, then loaned his station and other call, KH6GPQ, to pal K2KIR, who proceeded to place *that* call in the Top Ten. Bud (KIR) lost the bet on who could make the better score, due in part to poorer conditions the second weekend (that's what he sez, anyhow). F5QQ used the call FY7AA the first cw weekend, then loaned his station to K3BSY, who keyed FY7AK; both made the Top Ten.

The golden pencil award goes to PJ2VD; not only did Joeke have the highest score in the contest (higher even than the best phone score) but he also sent in nearly the neatest log. The deciding factor was that the PJ2VD log was his original, operating log, not a copy. He clearly marked duplicate contacts in the margin, leaving them in the log for bleary-eyed contest checkers to see. That method is much preferred over recopying the log, at least for checking purposes.

On the affiliated club front, a reshuffling of last year's top three took place, with Frankford moving to the top, PVRC to number two, and Murphy's Marauders to number three. Frankford's victory can be attributed to several eye-popping single-operator scores, a number of excellent multi-operator efforts, and an organization which succeeded in getting many of the "small guns" out making points in bunches. The combination of all three methods of making points was necessary to win, and they did it beautifully.

Dropping out of the Top Ten clubs this year were the Honolulu DX Club and the Indy DXers (Indianapolis); their places were immediately snapped up by the Southern Cal. DX Club and the up-and-coming Northern California Contest Club,



CAC member K8HLR participated Low-Band, both phone and cw.

who placed sixth in their *first* DX Competition as an organization. All four entries from W6-land made the top ten clubs listing!

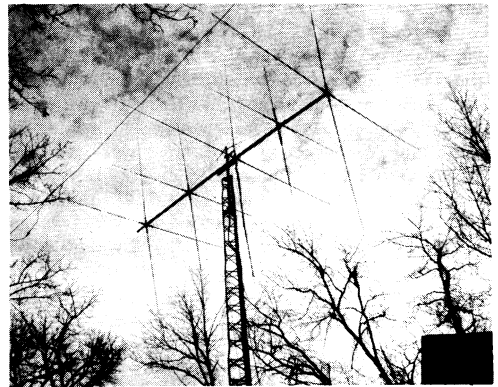
We could go on and on, of course. Main point is that we're all in there working, regardless of conditions. The DX was there to be worked this year, even for the casual participant, and it is that casual operator, both W/VE and DX, who makes the contest great. Our four weekends in February and March are our own method of ionospheric research, practically applied to a set goal; working various parts of the world on given frequencies.

Stand by for certificates around the end of October, then on to the 1976 ARRL DX Competition. Latest word (from our optimistic source) is that conditions will be better than in 1975. We have a pessimistic source, too, but we wouldn't consider for a second paying attention to him!

Soapbox

Fired up my 6AU6 amplifier, adjusted the output to 100 mw, and UKØZAB came back on the first call, for my fifth continent at that power level. — (W9PNE). As the shack warmed up a hornet came out of hibernation, climbed inside my 24-hour clock, and threw the time off one hour. — (W7HS). A lack of Russian stations, with the notable exception of UAØFGM, who was everywhere. — (W4BAA). Spent four daylight hours on the tower (130 foot) fixing a busted rotor. — (W3LPL). WØEE has managed to double its score in each major contest of 1974-75; looking forward to further improvements in the future. — (WBØGQP). I want my own linear or else want everyone else's to blow up. — (WA3SXH). [How about *both*? — Ed.] Had more equipment trouble and wind damage in four weekends than in the previous sixteen years of hamming. — (WA6NYV). Thank goodness for the hundreds of European low-power stations; without them my little ole tribander at fifty feet wouldn't be very competitive. — (W2MB). I can't wait to go to Hawaii or the Caribbean for one of these contests. — (WB2KNZ). I don't know why I enjoy it, but still a lot of fun. — (W2BQF). While WA2SRQ and WB2RKK operated, I served as chief cook, bottle washer, logger, dupe sheet keeper, band changer, beam pointer, and propagation advisor; the youngsters are welcome here as long as they don't start calling me "Pop." — (W2YD). Enclosed pictures were taken during the all-day power failure on Sunday of the second phone weekend. — (W3ZSR). Missed four good hours after nearly being electrocuted by my amplifier. — (K6SVL). Besides DXing during the contest, I practiced some fruitful Official Observing on 14,200. — (WA7OBH). My line noise was about S-6, allowing for easy preselector peaking. — (WB9GGD). Only managed to work BV2B four

times. — (W6ONV). After 48 hours of continuous operation during the first phone weekend, I attempted the drive home. When I recovered my car from the ditch the next morning, the side view mirror and radio antenna had been torn violently loose, pieces of splintered wood and barbed wire were caught in the front bumper, horse-hair was tangled in the windshield wipers, and my only clear memories were of the screams of angry razor-back hogs. All of this took place in L.A. City. No problem, though; the logs were intact. — (WB6OLD, opr. at W6HX). Happiness was finding 3B8CV vainly calling CQ between two large pile-ups and only me paying attention to him. — (WBØHOG). Got 41 countries with an attic trap dipole in a townhouse. — (W4HVU). Just as much fun as it was 40 years ago. — (WØLP). Had no equipment of my own, so I traveled to the home of TJ1EZ for the contest. — (TJ1AD/WB4WHE). My 31st entry in the ARRL DX Competition. — (F8VJ). I have been participating in this event since the 1930's, and 1975 produced the worst conditions in memory; even 160 was down this year. — (E19J). I only wait for the conditions to become better! — (JH2RVP). Since I could only operate the first weekend, please enter my log for checking purposes only; 1778 contacts is not up to par for me. — (YV5KL) [Thanks, OM; many newcomers will be able to obtain DXCC credit from your log. — Ed.] After three years of waiting, got cable TV two weeks before the contest; love it! — (KH61AC). The low-band category is ideal for Europeans, since the bands are open when television is not operating, making for fewer TV interruptions. Conditions were so bad that it was the hardest-working ARRL DX contest I have ever entered. — (G2RO). Conditions the last three hours of the cw contest on forty almost made up for the otherwise rotten propagation. — (G2QT). About



Just this quad at 48' and some wire antennas were all WA1KID needed to place eighth on phone, all-band.

TOP TEN

Single Operator				Single Operator			
Cw				Phone			
W/VE		DX		W/VE		DX	
W7RM	1,522,248	PJ2VD	4,306,509	W3WJD	2,281,125	KZ5BC	4,157,484
W3WJD	1,477,440	KH6RS	2,724,276	W6RR	1,676,700	6F8J	3,368,169
W6DGH	1,285,488	KH6IJ	2,599,575	W6HX	1,562,922	YV4YC	3,110,508
W6MAR	1,277,073	FY7AA	2,566,576	K4VX	1,119,297	XE1LLS	3,056,634
W3LPL	1,238,880	HC1CW	2,237,301	W4QCW	1,063,887	FYØBHI	2,556,576
W6OUN	1,108,917	KV4IO	1,854,900	W3LPL	1,099,314	KH6IJ	2,473,428
WB4YLG	1,092,960	FY7AK	1,693,089	W3BGN	1,012,557	T12WX	2,313,036
W71R	1,063,755	T12BEV	1,608,810	WA1KID	910,947	H18XAW	2,299,209
K4GSU	1,035,828	KH6CF	1,487,244	WA1PID	886,677	ZF1AK	2,015,328
K3YUA	973,269	KH6GPQ	1,376,892	W2MB	829,647	6W8FP	2,015,181

one-and-a-half hours straight was all I could operate, before I just had to go swimming. — (ZF1LM/W8LUI). I want to QSO with W stations on Top Band. — (JASEZI). Made 26 contacts on 7 MHz with 2 watts. — (JA7AVG). Never heard stations that are not W6, 7, 0; where were they? — (JA4PPR). Heard very little past the East Coast. — (G5BJM/WA2YVK). PA0GN is still active as a memorial station. We are hot on passing the one-million mark, but we'll never reach this goal without more Canadian activity. — (PA0ERA). No U.S. signals heard at all here on 15 or 10 meters, although we listened every hour from 1300 to 1700. — (PA9WRR/K6WR). Suggest U.S. stations listen below the DX Window on 160; I called many on their own frequencies below 1825 with very little success. — (ZF1AK). QSLs are pouring in (after the contest); the mailman hates me, and we eat on the dining room floor. — (V2PE... K2FJ).



Yep, the "59005" from OABV was for real!

Forty-First ARRL

International DX Competition

W/VE scores are listed by call area; DX scores are listed alphabetically by continent and prefix.

Awards: The operator of the first-listed single-operator station in each section or country is the winner for that area and receives a certificate award. The top-scoring multioperator station in each area also receives a certificate award. Awards are scheduled for an October 15 mailing. The top-scoring single-operator DX entrant for each continent each mode, receives an engraved plaque. Affiliated-Club awards are shown elsewhere in this article.

Scores: In the list to follow, read (from left to right): call of entrant, final score, multiplier (total countries per band for W/VE; total states and Canadian call areas per band for DX), contacts, approximate dc power input (A represents power up to and including 150 watts; B, over 150 and up to and including 500; C, over 500; D, combination of A+B; E, A+C; F, B+C; G, A+B+C), total time of operation to the nearest hour. Example: A2CCY 1,135,008-168-2252-A- indicates final score of 1,135,008, multiplier of 168, contacts 2252, power up to and including 150 watts, operating time not furnished.

An asterisk following a call denotes an ARRL Hq. staff member, ineligible for an award.

DIVISION LEADERS

Cw			Phone		
Single Op.	Multiop.		Single Op.	Multiop.	
W3WJD	W3AU	Atlantic	W3WJD	W3AU	
W9LT	W9DY	Central	WA9BWY	WA9IVL	
WA0ONL	WA0ENP	Dakota	WA0ONL	WA0ENP	
WA5RTG	...	Delta	WA5RTG	W5PBZ	
K4GSU	WA8TBQ	Great Lakes	WA8TBQ	W8NGO	
W2DXL	W2PV	Hudson	W2MB	W2PV	
W0IUB	W0EEE	Midwest	W0PCO	K0KU	
WA1PID	W1ZM	New England	WA1KID	W1ZM	
W7RM	W7SFA	Northwestern	W9IRH/7	W7VRO	
W6MUR	K6AQ	Pacific	W6NUT	W6OAT	
K4VX	W4BVV	Roanoke	K4VX	W4BVV	
W7HS	W0MYN	Rocky Mt.	WA0CVS	W0MYN	
WB4YLG	WA4LZR	Southeastern	W4YWX	WA4LZR	
W6DGH	W6ANN	Southwestern	W6RR	W6ONV	
K5PFL	WB5DTX	West Gulf	W5NMA	W5BJA	
VE3KZ	VE5NN	Canadian	VE3KZ	VE7SV	

DX CONTINENTAL CHAMPIONS

Cw			Phone		
Single Op.	Multiop.		Single Op.	Multiop.	
5T5CJ	...	Africa	6W8FP	...	
JA2JW	KA2AD	Asia	JA2JW	UK0LAB	
CT2BN	YU3DBC	Europe	I3MAU	G3TJW	
FY7AA	...	N. America	KZ5BC	VP2A	
KH6RS	...	Oceania	KH6IJ	KH6GKD	
PJ2VD	OA4O	S. America	YV4YC	PT2ZBS	

One-Weekend DXpeditions

(All are Certificate Winners)

CW

HB0AHA (HB9AHA, opr.)
 FY7AK (K3BSY, opr.)
 PJ8AS (W0IPU, opr.)
 T12BEV (K4VW, opr.)
 VP2E (K2FJ, opr.)
 VP2LBH (K2IGW, opr.)
 ZF1LM (W8LUI, opr.)
 KH6GPQ (K2K1R, opr.)
 C31IU (F0AXP, opr.)

Phone

W4BRB/C6A (+WA4FAP)
 FP0MM (W1MIW WA1TZV)
 T12BEV (K4VW, opr.)
 VP2A (K5s FVA YMY WA5AMF
 W5s UDK NOP KP4EAJ VP2AC)
 ZF1AU (K4YFQ WB4VVF)
 ZF1CW (W0s CW JJC ZTC VE7SV)

1976 ARRL DX COMPETITION

Phone: Feb. 7-8, Mar. 6-7.
 Cw: Feb. 21-22, Mar. 20-21.



W3TWZ, shown at W3BGN and a few accessory boxes in use during the contest.

LOW POWER CHAMPS
(150 Watts or Less at All Times)
All Band

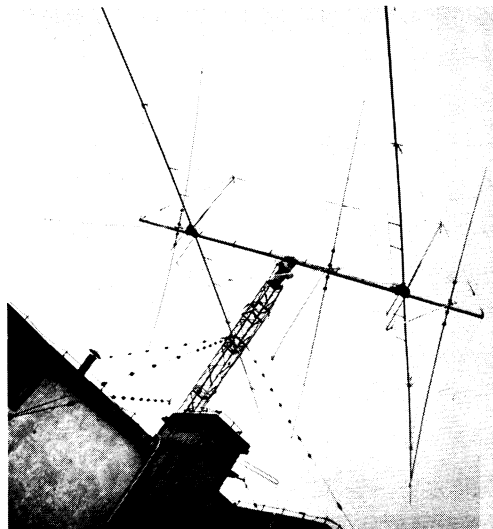
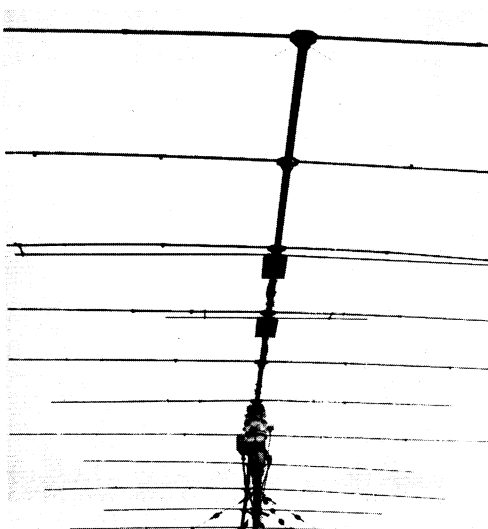
	Cw		Phone
WA1SSH	236,826	WA1SSH	194,394
W2IRV	121,380	K5YRK	125,307
W3ARK	105,429	WA3SXH	114,633
WA6TLV	98,748	WA1KOC	37,323
WA2LVV	80,379	W5EDX	23,115
WA2HAI	77,970	W1HDI	21,708
K4KA	62,271	WA3UJH	19,251
K2MFY	58,656	K4MOJ	18,762
K6YYQ	55,614	WA4JBC	15,792
W8GOC	46,458	WB5HOD	10,584

AFFILIATED CLUB SCORES

Club	Score	Entries	Phone Winner	CW Winner
<i>One-Land</i>				
Murphy's Marauders (Ct.) (3)	27,550,905	56	WA1KID	WA1PID
<i>Two-Land</i>				
Wireless Institute of the Northeast (N.J.) (10)	4,332,732	27	WB2RKK	WB2FIT
Boiled Owls of New York (17)	2,038,080	12	WB2CKS	W2GGE
South Jersey Radio Assoc. (19)	1,008,435	20	W2PAU	W2FYS
Buffalo Area DX Club (N.Y.) (21)	825,174	12	WA2LCC/2	W2HPF
Gloucester County ARC (N.J.) (34)	115,101	6	WB2OSQ	WA2NPD
Lake Success Radio Club (N.Y.) (36)	11,658	9	W2SGK	W2SGK
<i>Three-Land</i>				
Frankford Radio Club (Pa.) (1)	35,068,671	88	W3WJD	W3WJD
Nights of the Round Table (Md.) (26)	361,827	5	WA3SXH	K3IMC
ARINC Amateur Radio Club (Md.) (32)	267,546	10	W3PWO	W3GZP
<i>Four-Land</i>				
Potomac Valley Radio Club (Va.) (2)	29,278,725	67	K4VX	W3LPL
Central Virginia Contest Club (13)	3,014,553	15	W4QCW	W4ZSH
Southeastern DX Club (Ga.) (15)	2,168,517	12	K4JRB	W4YWX
North Florida DX Assoc. (25)	546,327	8	WA4EYR	W4WHK
Mid-South DX Association (Tn.) (28)	341,601	4	WA4FDR	WA4FDR
<i>Five-Land</i>				
Richardson Wireless Klub (Tx.) (5)	7,205,736	28	W5TMN	WA5RXT
Texas DX Society (11)	3,906,705	20	W5NMA	K5PFL
Alamo DX Amigos (Tx.) (20)	960,063	10	K5TSR	K5TSR
Delta DX Association (La.) (23)	638,670	7	K5MYM	W5UDK
<i>Six-Land</i>				
Southern California DX Club (4)	13,242,138	29	W6RR	W6DGH
Northern California Contest Club (6)	6,617,763	27	W6NUT	W6RGG/6
Northern California DX Club (7)	6,213,761	35	K6UJS	W6MUR
San Diego DX Club (8)	6,011,094	23	W6PLH	W6MAR
<i>Seven-Land</i>				
Western Washington DX Club (9)	5,723,148	31	W9IRH/7	W7RM
<i>Eight-Land</i>				
Michigan DX Assoc. (14)	2,736,711	13	WA8TBQ	K8IDE
Central Ohio AREC Membership Inc. (22)	658,398	4	K8MLO	K8MLO
Columbus ARA (Ohio) (27)	350,109	7	W8ZCQ	W8ZCQ
Central Ohio DX Association (29)	293,813	5	WA8ZDF	K8PYD
Ohio Valley ARA (30)	288,630	5	WB8FOS	W8RSW
<i>Nine-Land</i>				
Indy Dxers (12)	3,475,116	15	WA9BWY	W9LT
Northern Illinois DX Association (16)	2,074,527	19	W9OHH	W9RER
Four Lakes ARC (Wisc.) (31)	268,348	6	W9OW	W9LNM
Rockford ARA (Ill.) (33)	195,780	3	W9YRA	K9UIY
Chicago Radio Traffic Association (37)	7677	6	W9HPG	W9REC
<i>Zero-Land</i>				
Twin City DX Association (Minn.) (18)	1,038,192	4	W0NAR	W0NAR
Cedar Valley ARC (Ia.) (24)	586,296	9	W0PCO	WA0VDX
<i>Canada</i>				
Winnipeg DX Club (Man.) (35)	72,816	5	VE4RP

CONTINENTAL LEADERS, ALL BAND, QSO/BAND

CW						PHONE					
AFRICA						AFRICA					
	80	40	20	15	10		80	40	20	15	10
5T5CJ	228	443	719	690	15	6W8FP	371	398	1320	1111	109
ZS6FN	17	38	225	336		ZS6DW	279	334	433	1286	
	ASIA						ASIA				
JA2JW	89	309	835	276	1	JA2JW	122	244	522	378	
UAØFGM	140	235	727	123		UAØFGM	168	342	654	47	
JA2AXB	27	128	358	87			EUROPE				
	EUROPE						EUROPE				
CT2BN	310	786	975	389		I3MAU	410	235	1219	62	
I6BQI	219	361	1041	46		CT2BN	72	326	475	170	
OE5KE	128	84	789	19		I1NUC	62		1209	30	
F5IN	57	121	980	10			NORTH AMERICA				
I3GNQ	156	231	511	26		KZ5BC	588	688	1415	1920	545
	NORTH AMERICA					6F8J	624	671	1550	1404	224
FY7AA	346	855	890	739	320	XE1LLS	547	843	1610	1059	222
KV4IO	239	736	848	708	218	FYØBHI	605	828	1961	1469	360
FY7AK	228	423	1025	713	163	TI2WX	330	323	912	1233	388
TI2BEV	269	262	835	686	338	H18XAW	228	489	927	1969	54
KP4EAJ	210	262	513	512	221		OCEANIA				
HR1AT	270	370	313	260	210	KH6IJ	643	558	1215	1244	106
KV4CK	200	212	354	799	139	KH6IGJ	313	404	1084	922	36
VP2E	213	233	314	512	122	KH6HML	189	249	113	322	51
	OCEANIA					ZL3GG	133	355	99	300	12
KH6RS	381	892	913	901	346	KH6GPQ	84	107	155	482	28
KH6IJ	416	675	1243	919	143	VK4VU	48	247	235	354	
KH6CF	316	391	1017	555	93		SOUTH AMERICA				
KH6GPQ	244	630	696	538	85	YV4YC	645	618	1356	1013	532
ZL3GG	178	613	442	398	96	LU2A	73	195	976	900	456
	SOUTH AMERICA					LU8A	7	131	431	657	279
PJ2VD	614	844	1416	1271	729	PZ5FB	208	163	235	475	84
HC1CW	265	558	954	739	553						
LU6EF	39	275	560	569	529						
LU8ADK	7	284	512	716	290						



SP5PWK

W/V E CW ALL BAND CANADIAN		Multi-Multi		W3GRS		WB4WDH	
Maritime		W2PV (+K1s OME ZND W1GQO WA1s JYV NZT WA2s AYC SPL WB2s OEU SQN) 2,126,100-373-1900-C-96		191,664-176-363-C K3AIG 150,120-139-360-C-44 WA3ZSI 145,734-107-454-B-72 W3KFO 130,986-114-383-C-2 W3ALB 129,339-131-329-C-29 WA3NQX 120,450-110-365-C-28 W3ARK 105,429-113-311-A-37 W3GHM 99,375-125-265-E-29 W3BIP 96,768-126-256-C-36 W3KVC 65,988-94-234-C-25 W3CGS 58,869-93-211-C-26 WA3YQW 51,880-88-195-D-60 K3MBF 46,230-46-335-C-12 K4JLD/3 43,095-85-164-C-19 WA3SZV 20,955-55-127-C-32 W3EVW 20,313-61-111-C-16 W3EAN 15,933-47-113-C WA3WIM 14,850-50-99-C K3TJE 7,560-42-60-B-10 W3HMR 7,182-42-57-C-14		85,480-60-86-B-24 W2HL/4 7080-40-59-B-10 K4RQE 3072-32-32-B-4 W4FCN 2835-21-45-A-15	
VE1KE 313,962-134-781-E VE1EK 13,965-49-95-A-14		N.Y.C.-L.I. W2GGE 477,945-195-817-C-48 WA2YHK 162,024-172-314-F-37 W2IRV 121,380-119-340-A-32 W2FVS 80,892-126-214-C W2LJY 80,330-117-229-A-3 W2GKZ 63,300-100-21-C-15 K2MFY 58,656-94-208-A-36 WB2ZHZ 37,422-81-154-A-55 W2GC 35,319-61-193-C-19 WA2KUX 21,240-59-120-C-31 WA2LOQ 17,982-54-111-C WB2UHY 9477-39-81-A-32 WA2CXQ 13,316-18-25-D-7 W2CZZ 630-14-15-B-4 W2ZTS 147-7-7B-3		Multi-Single W3BGN (+K3JFV W3TZW) W3ATX (+W3MCO) W3KT (2 meter net) W3GPE (K3 JOJ WJV WA3s COJ FFR WN3YD) W3GM (+K3ZOL W3s JSX KFK WA3s JLT JYB) W3FRY (+K3s DZB HTZ WA3s LNM NAF SWF) W3LPL 1,238,880-290-1424-C-70 K3GJD 815,517-237-1147-C-72 W3GRF 282,694-185-571-C-20 W3MFI 261,126-163-534-C W3EYF 114,114-143-266-A-35 W3FA 112,014-127-294-C-35 K3IMC 61,659-93-221-C-48 W3GZP 54,405-93-195-E-45 W3TOS 54,126-97-186-B-33 W3HVM 26,460-63-140-C-14 W3KS 22,896-72-106-G-18 W3LMZ 12,789-49-87-C-0 W3KA 11,280-47-80-B-8 K3AV 6216-37-56-B W3ZSX 4995-37-45-A		Multi-Single W3BZV (+W3N1 WA3NGS K4CFB) W3EZT (+K3AV W3s DBT DNY EB WA3GUI K4MZR WSTWT) K3BHJ (+WB2MZE K3AVT WA3KOC) WA3AFQ (+ 2 meter net) W3ZH (W3HVQ W3TUX WN3UO) 2451-19-43-C-9	
Quebec VE2WA 169,560-157-360-C-18 VE2AYU 143,910-123-390-C-68		Northern New Jersey WB2FIT 537,624-228-786-C-3 K3BMF 514,520-228-837-C-75 WB2RJ 434,655-95-743-C-61 W2FQK 268,536-167-536-C-54 WA2UOO 242,064-164-492-C-33 WA2WBE 66,240-115-192-B-47 W2CVW 32,004-84-127-G W2HNR 26,208-78-112-C WB2HR 11,289-53-71-C-9 WB2RKK 24,702-33-98-B-3 W2MBJ 7,267-37-56-E-7 WA2EJ 4611-29-53-B-10 WA2DSA 1860-20-31-A-2 WB2VFT 1764-21-28-D-2		Maryland-D.C. W3LPL 1,238,880-290-1424-C-70 K3GJD 815,517-237-1147-C-72 W3GRF 282,694-185-571-C-20 W3MFI 261,126-163-534-C W3EYF 114,114-143-266-A-35 W3FA 112,014-127-294-C-35 K3IMC 61,659-93-221-C-48 W3GZP 54,405-93-195-E-45 W3TOS 54,126-97-186-B-33 W3HVM 26,460-63-140-C-14 W3KS 22,896-72-106-G-18 W3LMZ 12,789-49-87-C-0 W3KA 11,280-47-80-B-8 K3AV 6216-37-56-B W3ZSX 4995-37-45-A		Virginia K4VX (WB4SGV, opr.) W4B4GY W4KFC W4ZSH W4JDM W4JHK K4ZRX K4JM K4KA W4YZC K4OD W4YHD W4NH K4ZA K4FOK WB4OXD K4JYM W1FRF/4 W4KMS K4EJG	
Ontario VE3EK 361,674-213-566-C-54 VE3EU 134,747-127-355-C		Saskatchewan VE5RA 78,960-94-280-C VE5TT 10,320-40-86-A-26		Multi-Single W3BGN (+K3JFV W3TZW) W3ATX (+W3MCO) W3KT (2 meter net) W3GPE (K3 JOJ WJV WA3s COJ FFR WN3YD) W3GM (+K3ZOL W3s JSX KFK WA3s JLT JYB) W3FRY (+K3s DZB HTZ WA3s LNM NAF SWF) W3LPL 1,238,880-290-1424-C-70 K3GJD 815,517-237-1147-C-72 W3GRF 282,694-185-571-C-20 W3MFI 261,126-163-534-C W3EYF 114,114-143-266-A-35 W3FA 112,014-127-294-C-35 K3IMC 61,659-93-221-C-48 W3GZP 54,405-93-195-E-45 W3TOS 54,126-97-186-B-33 W3HVM 26,460-63-140-C-14 W3KS 22,896-72-106-G-18 W3LMZ 12,789-49-87-C-0 W3KA 11,280-47-80-B-8 K3AV 6216-37-56-B W3ZSX 4995-37-45-A		Arkansas W4MYA (+W4LDF WB4BVY) W4QCW (+W4SZDT) W4TBO (WA4s BFY BKO) W4BVV (+K3OAE W3BQV WA3HWX K4s GKD YF W4CRW W5ZSR)	
British Columbia VE7FE 14,238-42-113-A-1		Multi-Single W2YD (+W2HYZ WA2SRQ WB2RKK) WA2DNY (+WB2CST) K2CW/2 (multiop) WB2FTQ (+WB2FUE) Southern New Jersey K2JOC 454,860-210-722-E-63 W2RPF 430,962-217-662-C-50 K2FL 230,480-180-427-C-65 W2FYS 203,820-158-430-C-51 W2HBT 168,921-137-411-E-50 W2PAU 145,632-148-328-C-50 K2FT 129,564-122-354-C-37 W2DT 124,488-133-312-C W2EA 92,741-11-278-B-56 W2TKZ 80,031-103-259-C-32 W2UI 65,952-96-229-B-24 W2EPA 47,988-93-172-C-45 K2OO 41,676-92-151-A WA2NPD 12,267-47-87-C-15 W2ZHN 10,296-52-66-C-16 W2ZYA 7,451-33-85-F-5 W2FGY 7,392-44-56-B-25 W2HVO 6426-42-51-B-22 WA2BZX 4680-24-65-B-18 W2FBF 3105-23-45-C-3 WB2BYU 1425-19-25-C-5		Mississippi W5RUB 77,625-125-207-C-18			
U.S.A.		Multi-Single W1PID* 673,425-219-1025-C WA1STN* 568,941-199-953-F-48 WA1SSH 236,826-177-446-A-60 WA1LNQ* 219,180-130-562-C-30 W1HFB 203,136-128-529-C-27 WA1MAO 194,928-131-496-C-28 W1BIB 159,840-160-333-C-20 K1RLU 150,336-116-432-C-29 W1VV 145,266-142-341-C-30 W1GPK 111,834-114-327-C-44 W1AB 60,348-94-214-C-19 W1CNU 41,328-82-168-B-40 W1VH 34,602-79-146-C-41 WA1KOC 14,652-44-111-B-8 WA1QNF 6042-38-53-C-3 W1SK 1140-19-20-B-14 WA1SCV 612-12-17-A-3		Northern Texas W5TMM 148,920-146-340-C-37 W5PAQ 72,885-113-215-C-22 K5VTA 60,564-98-206-C-36 K5ZJP 46,944-96-163-C-24 K5YRK 9024-47-64-B-26 K5PRV 7326-37-66-A-38 W5SSD 5508-34-54-A-25 K5LQJ 1296-18-24-A-12			
Connecticut WA1PID* 673,425-219-1025-C WA1STN* 568,941-199-953-F-48 WA1SSH 236,826-177-446-A-60 WA1LNQ* 219,180-130-562-C-30 W1HFB 203,136-128-529-C-27 WA1MAO 194,928-131-496-C-28 W1BIB 159,840-160-333-C-20 K1RLU 150,336-116-432-C-29 W1VV 145,266-142-341-C-30 W1GPK 111,834-114-327-C-44 W1AB 60,348-94-214-C-19 W1CNU 41,328-82-168-B-40 W1VH 34,602-79-146-C-41 WA1KOC 14,652-44-111-B-8 WA1QNF 6042-38-53-C-3 W1SK 1140-19-20-B-14 WA1SCV 612-12-17-A-3		Western Pennsylvania W3WTV (+W3s ADH VW) W3TVE 567,672-248-763-C-80 W3HDD 34,800-80-145-B-17 WA3GSC 12,600-50-84-D-19		Alabama W4RAL 22,110-67-110-B-21 Georgia W4YWX 825,210-265-1038-C-81 K3ABA 92,964-122-254-C W4DXI 29,106-77-126-C-31 WB4DFM 1980-22-30-B-17 Kentucky K4GSU 1,035,828-276-1251-F-78 North Carolina WB4MGB 12,450-50-83-E-12 South Carolina K4II 212,544-164-432-C-36 WB4NR1 129,630-145-298-F-65 Southern Florida WB4YLG 1,092,960-253-1440-C-90 K4CL 1,283,343-169-549-F-55 K4HWW 199,080-158-420-B-70 W4HOS 90,090-130-231-B-28 W4OZF 30,687-53-193-C-9			
Maine K1RQE 275,328-192-478-C-36		Western New York WA2SFT 41,712-79-176-B WA2CDV 20,400-68-100-C-12 K2IGW 15,810-62-85-A-9 WB2NZ 1782-18-33-A-5 WB2AIO/2 108-6-6-C		Arkansas W5RUB 77,625-125-207-C-18			
New Hampshire W1EHT 55,596-82-226-B-24 W1IRGU 29,484-84-117-B-26 W1HDI 7182-38-63-B-22		Multi-Single K2KA (+WB2BXV) WA2BLV (+K3JCT WA3LRO) Western Pennsylvania W3WTV (+W3s ADH VW) W3TVE 567,672-248-763-C-80 W3HDD 34,800-80-145-B-17 WA3GSC 12,600-50-84-D-19		Mississippi W5RUB 77,625-125-207-C-18			
Rhode Island W1YNE 1296-18-24-C-1 W1AIRFT 60-4-5-B-2		Multi-Single K2KA (+WB2BXV) WA2BLV (+K3JCT WA3LRO) Western Pennsylvania W3WTV (+W3s ADH VW) W3TVE 567,672-248-763-C-80 W3HDD 34,800-80-145-B-17 WA3GSC 12,600-50-84-D-19		Alabama W4RAL 22,110-67-110-B-21 Georgia W4YWX 825,210-265-1038-C-81 K3ABA 92,964-122-254-C W4DXI 29,106-77-126-C-31 WB4DFM 1980-22-30-B-17 Kentucky K4GSU 1,035,828-276-1251-F-78 North Carolina WB4MGB 12,450-50-83-E-12 South Carolina K4II 212,544-164-432-C-36 WB4NR1 129,630-145-298-F-65 Southern Florida WB4YLG 1,092,960-253-1440-C-90 K4CL 1,283,343-169-549-F-55 K4HWW 199,080-158-420-B-70 W4HOS 90,090-130-231-B-28 W4OZF 30,687-53-193-C-9			
Vermont WB2CKS/1 360,936-216-557-C-58 K1IHK 69,600-100-232-C-15		Delaware W3TGF 236,379-143-551-C-66 W3GL 215,424-187-384-E-45 W3DRD 32,832-76-144-D-22		Arkansas W5RUB 77,625-125-207-C-18			
Western Massachusetts WA1ABW 544,434-226-803-C-45 K1RQF 45,594-51-298-C-17		Eastern Pennsylvania W3WJD 1,477,440-320-1539-C-85 K3UYA 973,269-261-1243-C W3QOR 807,990-230-1171-F-60 W3YP (W3DQG, opr.) W3NZ 494,316-207-796-C-80 W3NZ 363,285-195-621-C-52 W3YIK 263,571-163-539-C-75 W3OV 230,892-142-542-C K3YCY 230,400-150-512-C-23 K3BV 212,826-158-449-C		Arkansas W5RUB 77,625-125-207-C-18			
2 Eastern New York W2DXL 666,666-222-1001-C W2HO 229,272-164-466-C-54 WA2HAI 77,970-115-226-A WA2LJM 24,576-64-128-C-44 W2AWF 10,191-43-79-C-12 WA2HHO 2604-28-31-C-7		Kentucky K4GSU 1,035,828-276-1251-F-78 North Carolina WB4MGB 12,450-50-83-E-12 South Carolina K4II 212,544-164-432-C-36 WB4NR1 129,630-145-298-F-65 Southern Florida WB4YLG 1,092,960-253-1440-C-90 K4CL 1,283,343-169-549-F-55 K4HWW 199,080-158-420-B-70 W4HOS 90,090-130-231-B-28 W4OZF 30,687-53-193-C-9		Arkansas W5RUB 77,625-125-207-C-18			
3 Delaware W3TGF 236,379-143-551-C-66 W3GL 215,424-187-384-E-45 W3DRD 32,832-76-144-D-22		Arkansas W5RUB 77,625-125-207-C-18		Arkansas W5RUB 77,625-125-207-C-18			
4 Alabama W4RAL 22,110-67-110-B-21 Georgia W4YWX 825,210-265-1038-C-81 K3ABA 92,964-122-254-C W4DXI 29,106-77-126-C-31 WB4DFM 1980-22-30-B-17 Kentucky K4GSU 1,035,828-276-1251-F-78 North Carolina WB4MGB 12,450-50-83-E-12 South Carolina K4II 212,544-164-432-C-36 WB4NR1 129,630-145-298-F-65 Southern Florida WB4YLG 1,092,960-253-1440-C-90 K4CL 1,283,343-169-549-F-55 K4HWW 199,080-158-420-B-70 W4HOS 90,090-130-231-B-28 W4OZF 30,687-53-193-C-9		Arkansas W5RUB 77,625-125-207-C-18		Arkansas W5RUB 77,625-125-207-C-18			

HA5KBM (multiop)
111,156- 59- 636-B
HA0KLE (HA0s LM LO LZ MJ MK) 89,250- 70- 425-D-
HA9KPU (multiop) 81,772- 66- 415-B
HA5KKN (multiop)
66,621- 53- 419-B-23
HA8KVG (multiop)
43,542- 59- 247-B
HA2KRL (multiop)
37,191- 49- 257-B
HA3KMR (multiop)
36,000- 50- 240-B
HA5KKC (HA5s LV MA MD MO)
32,634- 49- 228-A
HA4KYH (HA4s YL YO YX)
30,420- 52- 195-B
HA1KZB (multiop)
22,533- 37- 215-B
HA3KJG (HA3s GJ GO HE H3-117 H3-118) 5773- 23- 91-B

Switzerland
HB9DX 34,164- 52- 219-B
Liechtenstein
HB0AHA (HB9AHA, opr.)
212,139- 97- 729-B

Italy
I6BOI 675,135-135-1667-C-
I3GNQ 315,780-114- 925-B-47
I1SLI 230,010- 82- 934-B-48
I79RAN 213,393- 83- 857-B-38
I8RHZ 22,059- 43- 171-B-20

Norway
Multi-Single
LA1K (LA1FR LA3BO LA4CQ LA5KO LA7s DS SP YN)
100,092- 76- 439-C

Bulgaria
Multi-Single
LZ1KDP (multiop)
189,540- 90- 718-B
LZ2KSU (multiop)
39,798- 66- 201-B
LZ1KAU (multiop)
14,448- 43- 112-B
LZ2KBA (multiop)
56,116- 24- 78-B
LZ2KSB (multiop)
4698- 27- 58-B

Austria
OE5KE 335,664-108-1036-B

Finland
OH7NW 5070- 26- 65-B
OH9AB (OH9PH, opr.)
1677- 13- 43-B

Czechoslovakia
OK30KFF 141,462- 87- 542-B
OK30AVD 33,793- 47- 263-B
OK30KVO 11,877- 37- 107-A
OK30BEC 1392- 16- 29-B
OK30KZ 324- 9- 12-D

Multi-Single
OK30KAG (OK30s CIR ZAF ZFM)
86,904- 68- 430-B
OK30KYS (OK30s FRF FVA)
27,462- 46- 199-B-14
OK30KYD (multiop)
6954- 19- 122-A
OK30KCF (multiop)
48- 4- 4-A

Multi-Multi
OK30KSO/p (OK1s AAU AEZ AII AMF AXK SF TS WT)
206,670- 83- 830-B-96

Belgium
ON4XG 53,940- 58- 310-A-17

Denmark
OZ1LO 230,520- 85- 904-B-37
OZ5ME 21,390- 46- 155-A-45
OZ1W 17,415- 45- 129-A

Netherlands
PA9AEH 41,160- 49- 280-A-28
PA0PE 23,862- 41- 194-B-32
PA0LOU 18,765- 32- 139-A- 6
PA0TAU 6384- 28- 76-A
PA0VB 6084- 26- 78-B
PA0PLM 3- 1- 1-A- 1

Multi-Single
PA0GN (PA0s BRO ERA GIN NRA OOS PKD TA)
56,736- 48- 394-A-28
PI50ARU (PA0s IOZ TO YZ)
18,354- 38- 161-C- 8

Sweden
SM7GGK 12- 2- 2-A- 1

Multi-Single
SK2DR (SM2s CEW CLY EKM

GXN) 322,650- 90-1195-B

Poland
SP7CTY 19,005- 35- 187-A-
SP9AGS 3717- 21- 59-A

Multi-Single
SQ9KRT (SP9s FKQ HMF)
53,430- 65- 274-B
SQ6PAZ (multiop)
20,328- 44- 154-B
SP3KPN (multiop)
3- 1- 1-A- 1

Greece
SV0WGG 6600- 22- 100-B

European Russian S.F.S.R.
Multi-Single
UK3ABO (multiop)
68,796- 52- 441-B
UK1ZAA (multiop)
63,936- 48- 444-B
UK3ABB (multiop)
49,174- 46- 357-B
UK3AAC (multiop)
35,232- 48- 246-B
UK6LAZ (multiop)
33,840- 48- 235-B

White R.S.S.R.
Multi-Single
UK2ABC (multiop)
18,450- 41- 150-B

Latvia
Multi-Single
UK2GAN (multiop)
14,484- 34- 142-B
UK2GCF (multiop)
6048- 24- 84-B
UK2GAC (multiop)
1320- 11- 40-B

Lithuania
Multi-Single
UK2PBP (multiop)
4410- 21- 70-A

Ukraine
UY500 12,954- 34- 127-B
UBSZAT 2431- 17- 48-A

Multi-Single
UK5KAA (multiop)
28,620- 45- 212-B

Romania
YO7AWQ 264- 8- 11-A

Multi-Multi
YO3KAA (YO4HW YO8DD)
45,486- 57- 266-B

Yugoslavia
YU2RGB 167,730- 90- 619-B-64

Multi-Single
YU1BCD (YU1s NQW NZV PCF QBC)
49,824- 117- 1424-B-61
YU3CNO (YU3s CV EY TBG)
481,284- 116- 1383-B
YU4EPQ (multiop)
19,305- 33- 195-B

Multi-Multi
YU3DBC (+YU3s EZ TYX ZV)
790,818-133-1982-B
Gibraltar
ZB2CJ 1710- 19- 30-A- 3

NORTH AMERICA

Bahamas
C6ADF 840- 14- 20-A- 1

Martinique
FM7WH 80,190- 81- 330-A

St. Pierre & Miquelon Islands
FP8AP 331,200-120- 920-A

French Guiana & Inini
FY7AA 2,566,576-269-3168-C-
FY7AK (K3BSY, opr.)
1,693,089-219-2577-C-36

Honduras
HR1AT 887,409-207-1429-C-69
HR6SWA 12,513- 43- 97-C- 5

Alaska
KL7HSA 51,330- 58- 295-B-26

Puerto Rico
KP4EAJ 1,149,642-221-1734-C

Virgin Islands
KV4IO 1,854,900-225-2748-B-
KV4CK 986,616-193-1704-B-43

Canal Zone
KZ5WA 258,903-129- 669-B-13

Greenland

OX3DL 573,480-120-1593-B-
OX3RA 11,340- 30- 126-A

St. Maarten
PJ8AS (W0IFU, opr.)
653,625-175-1245-B-31

Costa Rica
TI2BEV (K4VW, opr.)
1,608,810-235-2282-C

Anguilla
VP2E (K2FJ, opr.)
916,965-213-1435-D-25

St. Lucia
VP2LAW 460,167-157- 977-B-20
VP2LBH (K2JGW, opr.)
246,126-127- 646-B-16

Mexico
XE2MX 307-117- 876-B

Cayman Islands
ZF1LM (W8LUL, opr.)
82,503- 89- 309-A-13

OCENANIA

New Caledonia
FK8BV 29,241- 57- 171-B

Guam
KG6JAR 48,018- 53- 302-E

Hawaii
KH6RS (K2SIL, opr.)
2,724,276-262-3466-C-38
KH6EJ 2,599,575-233-3425-E-77
KH6CF 1,487,246-209-2372-C-64
KH6GPQ (K2KIR, opr.)
1,376,892-209-2196-E-29
KH6IJA 349,770-131- 890-B-36
KH6BYG/KH6
29,118- 46- 211-A-50
1470- 14- 35-B-12

Marshall Islands
KX6BB 132,804-102- 434-B- 9

Australia
VK2GW 273,939-127- 719-A-62
VK4UR 42,572- 42- 197-A
VK3JI 28,704- 52- 184-A-15

New Zealand
ZL3GG 1,072,467-207-1727-A-52
ZL1AFW 505,248-152-1108-A-52

SOUTH AMERICA

Ecuador
HC1CW 2,237,301-243-3069-C-41

Argentina
LU6EF 1,159,536-196-1972-B-88
LU8ADK 1,047,411-193-1809-B-46

Multi-Single
LU8DQ (+LU1s DAY DZ)
2,746,458-242-3783-C

Peru
OABV 27,132- 68- 133-A- 9

Multi-Single
OA4O (OA4AA CX1AAC)
3,340,500-262-4250-C

Netherlands Antilles
PJ2VD 4,306,509-291-4933-E-69

Venezuela
YV4AKI 782,800-200-1638-A-76
YV1OB 749,916-222-1130-E-39

W/VE PHONE ALL BAND CANADIAN

Maritime
VE1ANH 81,666- 78- 349-C-38

Quebec
VE2AYU 166,014-138- 401-C-66

Ontario
VE3KZ 643,083-271- 791-B-62
VE3CSN 14,400- 50- 96-E-28

Multi-Single
VE3MCH (VE3s EFD ESH)
93,141-131- 237-C-47
VE3EDC (+VE3EDJ)
44,928-104- 144-C

Manitoba
VE4RP 57,768- 83- 232-B-58
VE4AA 594- 9- 22-B- 3

Saskatchewan
VE5RA 119,238-119- 334-C

Multi-Single

VESNN (VE5s BX DX GG UA)
46,560- 80- 194-B

Alberta
CY6AGV 30,888- 66- 156-C-23

British Columbia
Multi-Single
VE7SV (+K7JCA WA7OT)
531,744-191- 928-C

U.S.A.
I

Connecticut
WA1KID 910,974-262-1159-E-61
WA1PID* 886,677-277-1067-C
WA1STN* 520,344-219- 792-C-40
WA1LNO* 313,443-171- 611-C-33
WA1MAO 256,968-172- 498-C-34
WA1SSH 194,394-179- 362-A-50
WHFB 167,580-140- 399-C-25
WA1NZT 139,050-150- 303-B-43
W1VV 123,216-151- 272-C-27
K1RLU 106,929-109- 327-C-25
W1BHH 79,343-179- 193-C-14
WA1KOC 37,323- 87- 143-A- 8
W1GPK 25,296- 68- 124-C-15
W1AB 19,140- 58- 110-C-10
WA1PAX 15,960- 56- 95-C-16
WA1SCV 2835- 27- 35-A- 9
W1SK 768- 16- 16-B- 7

Multi-Single
WA1NRF (+WA1s OCU QNF)
289,536-208- 464-C-80
K1UAT (K1MAR WA1s MNM NCK
RQB SW SUG TLD TGE UIJ
WN1S TB7G TFH UDO UIX
UOK UPS
152,460-140- 363-C-85

Multi-Multi
W1WZ (+K1THQ W1GQO WA2s
CLQ LQZ WB2HZH)
3,194,400-2662-E-96
K1VTM (+W1s GNC QGO WA1s
ABV LNQ)
1,080,000-288-1250-C-90

Eastern Massachusetts
WA1NRP 721,215-235-1023-C-45
W1CWH 596,247-233- 853-C-52
K1IHN 403,410-170- 791-C-38
W1P1V 222,216-188- 394-B-55
WA1JUY (WA1JYY, opr.)
200,970-145- 462-C-31
W1FJJ 141,036-146- 322-E-27
W1HWM 111,612-142- 262-B-46
W1DYH 27,750- 74- 125-C-51
WA1SCX 20,691- 57- 21-C-13
W1Z1Y 8400- 28- 100-C-15
W1CRL 720- 15- 16-A

Maine
K1RQE 571,500-254- 750-C-57
W1OTQ 9447- 47- 67-B-19

New Hampshire
K1CSJ 790,836-236-1117-C-66
W1EHT 57,888- 96- 201-B
WA1RGU 35,640- 88- 135-B-50
W1HDI 21,708- 67- 108-A

Rhode Island
K1HMO 71,340-116- 205-C-26
WA1JJC 53,148-103- 172-B-31

Western Massachusetts
WA1ABW 455,430-235- 646-C-45
W1COI 25,071- 61- 137-B-22

2

Eastern New York
WA2LJM 21,357- 63- 113-C-28

Multi-Multi
W2PV (+K1s OME YKT ZND
WA1NNC WA2s AYC EAH SPL
WB2s OEU SQ)
3,965,364-458-2886-C-96

N.Y.C.-L.I.
WB2CK 466,962-223- 698-C-51
W2GKZ 71,280-110- 216-C-16
W2LEJ 69,300-105- 220-B-48
W21RW 59,850-105- 190-B-20
W2GC 22,425- 65- 115-C-14
K2MFP 3483- 27- 43-A- 5
W2NBI 4278- 31- 46-C-15
WB2XHW 440- 14- 20-A- 4
W2AYHK 832- 12- 12-C- 2
WB2KKN 105- 5- 7-A- 4

Multi-Single
WA2LQO 93,150-115- 270-C

Northern New Jersey
W2MB 829,647-273-1013-C-78
W2EQK 235,188-188- 417-C-48

WB2RKK 177,024-128-461-C-22
WB2FIT 56,286-106-177-C-12
WB2RJJ 34,854-74-157-C-12
WA2WBE 18,612-66-94-B-30

Multi-Multi
K2CW/2 (multiop)
716,040-260-918-C-78

Southern New Jersey
W2HMH 826,950-298-925-C-76
K2FL 432,684-238-606-C-55
W2HHB 259,116-151-572-C-52
W2HNO 240,285-193-415-C-70
WA2BLV 180,180-182-330-C
K2JOC 141,174-138-341-C-19
W2HBT 139,302-142-327-B-45
WB2JJN 118,020-140-281-E-42
W2UI 113,424-139-272-B-24
W2PAU 72,114-119-202-C-48
WB2OSQ 64,000-107-200-F-32
W2EPA 47,817-99-161-C-43
W2FGY 37,422-81-154-B-25
W2FBF 19,500-65-100-C-9
WB2BZY 9594-39-82-C-24
W2ITG 3060-30-34-C
W2HVO 1800-24-25-B-14
WB2UFB 1215-15-27-A-11

Multi-Single
W2EHB (+2 meter net)
454,767-241-629-B-58
K2FT (+K2KA W2ORA WB2XV)
199,557-171-389-C-60
K2AA/2 (W2s EA FYS)
155,601-153-339-C-50

Western New York
WB2LEI 34,719-71-163-C-36
WA2SFT 10,224-48-71-B-16
WA2CDV 2916-27-36-C-4
WB2FXV 918-17-18-C

Multi-Single
W2HPF (+WA2HSU WA3R9W)
714,492-267-892-C-91
WA2BCK/2 (+K2IGW WA2s AOG
EKW LCC MBP)
446,760-255-584-C-75
3

Delaware
W3GL 208,656-184-378-E-45

Eastern Pennsylvania
W3WJD (WA3LRO, opr.)
2,281,125-385-1935-C-90
W3BGN 2,112,557-283-1193-C-73
W3QOR 506,688-232-728-F-51
W3YP (W3DQG, opr.)
439,624-234-612-C-70
K3YUA 436,632-226-644-C
W3GRS 298,374-223-446-C
W3KFO 174,000-145-400-C
K3TGM 68,336-168-334-C
W3ALB 159,408-144-369-C-35
K3AIG 121,410-142-285-C-34
K3AWZ 112,173-139-269-F-29
K4JLD/3 108,420-139-260-C-33
W3KV 85,512-108-263-C-25
WA3SZJ 70,395-95-247-B-72
W3GGS 67,889-107-209-C
W3KBS 57,222-102-187-C-24
W3ETB 30,480-80-127-B
WA3NQX 20,034-63-106-C-10
K3KRF 17,877-59-101-F-22

Multi-Single
K3BW (+K3JLK)
332,280-195-568-C
K3MBF (+K3LJZ)
294,372-148-663-C-37
W3KT (+2 meter net)
232,218-194-399-C
WA3TAV (+WA3RCD)
17,640-56-105-C

Multi-Multi
W3GPE (W2HEU K3s OJO WJW
WA3FFR WN3YYD T12CC)
2,678,526-402-2201-C-96
W3GM (+K3ZOL W3s JSX KFK
WA3s JLT JYB)
2,360,358-393-2002-C-96
W3FRY (K3s DFB HZT WA3s LNM
NAF RID SWF)
1,987,167-377-1757-E-96
W3DHM (+K3E2J JGD)
1,518,900-332-1525-C
WA3ATX (WA3s COJ GMS KQB
MPH)
805,350-295-910-E-85
K3CY (+W3GHM)
495,720-243-680-C-52
WA3ATP (+K3E2J)
94,239-111-283-C-38

Maryland-D.C.
W3LPL 1,099,314-314-1167-C-70
W3EZF 266,364-196-453-C-25
WA3SXH 114,633-141-271-A-50
K3IMC 103,331-131-261-C-48
W3GRF 89,625-125-239-C-20

K3ZAW 71,757-119-201-C-31
W3FA 70,800-118-200-C-15
K3BNS 50,508-92-183-C-32
WA3GZT 44,892-87-172-C-26
WA3UJH 19,251-69-93-A-15
W3LME 16,182-62-87-C-8
W3IPT 13,884-52-89-B-14
WA3IYV 10,296-52-66-A-8
K3IXD 6150-41-50-A-23
W3GZQ 1764-21-28-A-12
W3ZSX 126-6-7-A-3

Multi-Single
K3GJD (+WA3VUO WSTWT)
700,500-250-934-C-81
K3BHJ (+WB2MZE K3AVT
WA3KOC)
561,408-256-731-C-84
WA3NGS (+W3BWZ)
361,248-212-568-C-58
W3ZH (W3s HVQ TUX WN3UO)
14,616-58-84-C-21

Multi-Multi
W3AU (+K3EST W3s AZD IN ZKH
WA3s AMH HRV IAO TAI UTA
W9SZR LU6HDV)
3,733,695-439-2835-C-96

Western Pennsylvania
W3VT 610,236-276-737-C-76
W3YX 8640-40-72-B-10
K3DR 7482-43-58-C-14
WA3MYI 7380-41-60-A-24
W3KVS 5382-39-46-C-14
WA3GSC 1080-18-20-D-7

Multi-Multi
W3TV (+W1GL W3s AOH VW)
263,424-196-448-C-29

4

Alabama
K4BYM 16,107-59-91-C-8
WA4JBC 15,792-56-94-A-28

Georgia
W4YWX 715,293-267-893-C-72
W4WRV 375,789-229-547-E-70
K4JRB 363,636-222-546-C-72
K4E7 325,710-210-517-E-54
W4UYC 89,157-113-263-B-3
W4DXI 38,715-89-145-C-30
W4GKI 24,750-75-110-D-40
K4BAI 5985-35-57-C-6

Kentucky
WB4OSS 376,050-230-545-F-60
WB4KTR/4 17,280-64-90-C-8

North Carolina
K4KZZ 312,930-183-570-C-40

Northern Florida
WB4UZZ 569,850-262-725-F-67
WB4VUP 560,196-273-684-C-70
WA4EYR 154,440-165-312-C-25
WA4WQK 137,034-138-331-C-39
WA4UFU 20,592-66-104-C-15
WB4EYX 14,364-57-84-C-6

South Carolina
K4II 123,156-132-311-C-35
WA4EWW 116,760-139-280-E-60

South Florida
K4HRL 157,248-168-312-C-60
K4CL 146,544-142-344-F-38
W4OZF 97,284-134-242-C-15
K4UTE/4 72,924-118-206-B-54
W4FCN 3915-29-45-A-20
WB4NTH 60-4-5-B-1

Multi-Single
WA4LZR (W4s LKG LTB WA4FCT
W4s AEX HYN HYY VMH)
883,872-288-1023-C-96
W4DFU (WA4GAJ WB4TTZ)
205,545-193-355-C-96

Tennessee
WA4FDR 144,744-163-296-C-21
W4DUP 122,430-154-265-E-8
K4MOJ 18,762-53-118-A-8

Multi-Single
WA4ZZU/4 (+WB4s RJF TGC)
72,237-121-199-C-25

Virginia
K4VX 1,119,297-289-1291-F-67
W4QCW (WA8ZDT, opr.)
1,063,887-313-1133-F-83
W4MYA 396,240-208-635-C-43
W4QAW 249,021-207-401-C-48
WA4HPF 238,950-177-450-C-40
K4OCMF/4 195,144-188-346-C-40
W4DM 111,720-133-280-C-20
K4ZA 109,668-148-247-C-40
K4ZRK 105,222-142-247-C-27
WA9MYM/4 56,160-104-180-C-43

K4OD 49,404-92-179-C-18
WB4SGV 48,300-92-175-C-10
W4JHK 38,628-87-148-C-8
W4DSW 38,367-87-147-C-22
W8QGP/4 34,713-87-133-C-26
W4KMS 24,075-75-107-F-21
W4HVV 6027-41-49-C-16
W4LGM 588-14-14-A-1

Multi-Single
WB4BGY (+WB4s HOE UKA WB8IIN)
1,196,715-323-1235-C-90

Multi-Multi
W4BVV (+W1FLM W3BQV WA3s
H4WW WJL K4GKD W4CRW
WB4MR L U8AGT)
3,039,930-405-2502-E-96

5

Arkansas
W4SRT 414,903-251-551-F-70

Multi-Single
W5PBZ (+K5B0C)
98,229-137-239-C-9

Louisiana
K5KLA 194,805-185-351-C-45
W5UDK 148,270-167-293-C-8
W5WG 103,878-122-283-C-47
K5FVA 84,510-90-313-C-26
W5AWSE 36,180-90-314-C-30
W50B 30,504-82-124-C-30

New Mexico
K5JVK 103,329-129-267-E-53

Northern Texas
W5TMN 457,920-240-636-C-71
K5HTM 167,322-158-353-C-70
K5YRK 125,307-153-273-A-62
W5PAQ 69,342-127-182-C-29
K5VTA 63,270-111-190-B-36
W5AE 27,156-73-124-C-25
W5WB0 15,252-62-82-B-13
W5KTR 7290-45-54-E-9
W5SOD 1350-18-25-A-5

Multi-Single
W5BJA (+W5MYA)
682,227-273-833-C-6
W4SRTX (+W5AQX W5BJSJE)
457,125-265-575-E-91

Multi-Multi
W5SDT X (WB4JEZ W5ZSX
WA5UCT WB5s AAR EEE IZN
WA6OJJ)
1,817,487-357-1697-E-96

Oklahoma
K5DEC 660-11-20-B-24

Southern Texas
W5NMA 518,076-246-702-C-85
K5JZY 349,890-214-545-F-73
K5TSR 211,419-169-417-C-8
W5KCR 108,240-142-254-C-52
W5LPO 102,582-123-278-C-52
W5RTO 84,366-129-218-E-21
W5JWM 61,755-115-179-F-8
W5AWQF 56,496-107-176-C-12
W5ASA 27,192-88-103-F-16
W5EDX 23,115-67-115-A-32
W50SJ 18,414-62-99-B-27
K5UKN 16,128-56-96-C-13
W5SHOD 10,584-49-72-A-15
W5STPO 8928-48-62-B-10
W5SPF 7134-41-58-B-19
K5LJZ 6090-35-58-B-3
W5ASLE 2349-27-29-C-3
WB0HZZ/s 1767-19-31-B-16

Multi-Multi
K5PFL (+K5s DEG RLW)
338,793-221-511-C-50

6

K6UJS 388,890-145-894-C-57
K6BYQ 217,728-144-504-C-60
K6HHH 198,135-105-629-C-8
W6AHD 11,700-50-78-B-20
W6ADIL 8880-37-80-C-5
W6KG 147-7-7-C-1

Multi-Single
W6DOD (+W6KG)
600,054-182-1099-C-90
WA6AHF (+W1ARR W6RG)
WA6VEF WB6LPK)
396,048-148-892-C-70

Los Angeles
W6RR 1,676,700-270-2070-C-80
W6HX (WB6OLD, opr.)
1,562,922-281-1854-C-96
WA6EPQ 588,885-215-913-F-57
W6KNC 348,540-148-785-E-55

W6BWG 3720-31-40-C-9
WA6IOG 1248-16-26-C-8

Multi-Single
W6YRA (WA6s DPO NOK TKO
WB6s ABP EPS GJO JAN PXP
ZSU WA7D AC)
1,084,070-215-1566-F-92
W6DGH (+W6DQX)
148,338-134-369-E-25
W6VPZ (Kos HRT KH Wes CFM
YOJ WA6BIL WB6WVU)
37,830-65-194-C-43
WA6NBY (+W30VU)
14,766-46-107-C-13

Orange
K6TXA 101,580-97-350-F-20
W6CY 26,136-66-132-C-26
WA6QVA 16,848-52-108-B-21

Santa Barbara
W6FSJ 270,732-154-586-C-52
W6AVYK 135,405-85-531-F-60
K6OW 97,200-100-324-C-50
W6PRP 41,580-84-165-B-25
K6QPH 7770-37-70-C-5

Santa Clara Valley
W6MUR (K6SSI, opr.)
243,936-154-528-C-8
K6RXX 119,070-105-378-C-33
W6BVB 115,842-86-449-C-30
W6YJK 81,972-92-297-B-35
W6SDS 41,262-46-299-C-10
WB6ISO 2838-22-43-F-3
K6AQ 1575-15-35-C-8

Multi-Single
W6OAT (+K6COF WA6s DIL PMK
QGW WB6KRW)
619,515-195-1059-C-69
W6OKK (+K1MTJ K6KM WA6UZA
WB6s DSV EXW)
1,584,400-174-1120-C-70
W6B6YI (+WA6HCJ)
204,930-138-495-C-80

Multi-Multi
WB6BKB (+WA6PGB)
416,175-179-775-C-49

San Diego
K6SDR 219,834-118-621-E-21
W6RCD 175,770-155-378-C-52
W6BZE 118,296-106-372-C-66
WA6XX 94,128-106-296-C-6
K6PO 79,800-70-380-C-25
W6CHV 52,320-109-160-C-30
W6ID 50,400-84-200-C-30
W6ABT 36,720-80-153-E-15
W6MAR 29,151-79-123-C-8

Multi-Single
W6ONV (+W6MAR WA9UCE)
1,515,024-252-2004-C-96
WB6CAJ (+WA6DNM WB6CSJ)
197,376-128-514-C-96

San Francisco
W6NUT (WB6AIN, opr.)
481,362-157-1022-C-48
W6WB 88,140-113-260-C-20
W6RNF 50,427-57-237-C-16
W6KHI 31,584-32-329-C-14

Multi-Single
W6BIP (+WA6DJJ)
286,052-139-686-C-45

San Joaquin Valley
W6YKS 51,084-66-258-C-20
K6AO 14,175-35-135-C-11

Sacramento Valley
WA6JVD 145,728-88-552-C-8
K6RN 108,486-123-294-C-38
WA6NYV 30,144-64-157-C-20
K6DR 18,468-54-114-C-10
K6SG 408-8-17-C-3

7

Arizona
W7AAY 143,208-117-408-C-24
WA7YRP 79,254-102-259-C-32

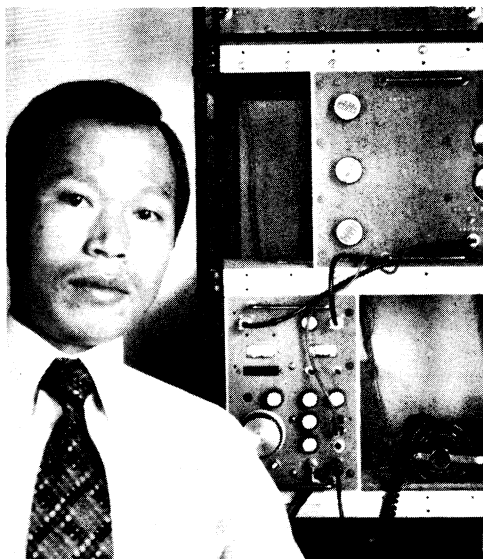
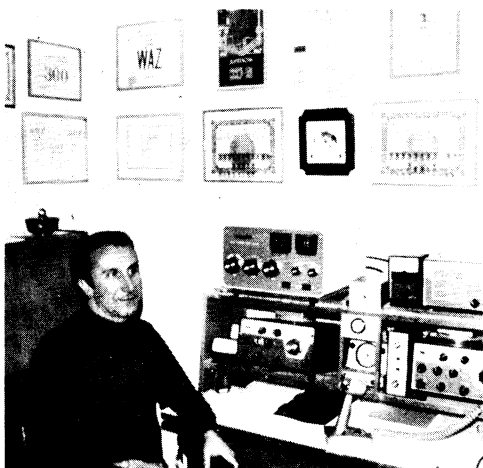
Idaho
K7NHV 66,240-69-320-C-11

Montana
K7ABV 53,148-86-206-C-22
WA70BH 3900-26-50-B-18

Nevada
W7JUO 36,036-78-154-C-30

Oregon
W7TML 514,452-172-997-C-65
WA7IHN 155,688-104-499-C-65

Utah
K1PKQ/7 119,025-115-345-C-29
W7HS 63,450-94-225-C-49



Clockwise, beginning top left: JA1DD, KH6IEG, WA6HRS, KX6BB, JG1EEE, IV0AMU.

TOP W/VE SINGLE OPERATOR – QSO/BAND

CW						
	160	80	40	20	15	10
W7RM	<i>Verts</i> 7	<i>Rotary 8JK</i> 189	<i>3-L</i> 921	<i>6 over 6</i> 737	<i>6/3/3/3</i> 423	<i>8L+6L</i> 19
W3WJD		<i>1/4λ GP, LW</i> 213	<i>2-L</i> 271	<i>5-L</i> 874	<i>6-L, 4-L</i> 136	<i>4-L, 3-L</i> 45
W6DGH	6	<i>2-L Wire</i> 209	<i>2-L</i> 820	<i>4-L</i> 407	<i>7-L</i> 412	<i>5-L</i> 42
W6MAR	1	<i>Dipole</i> 138	<i>2-L</i> 788	<i>4-L Quad</i> 399	<i>4-L Quad</i> 460	<i>4-L Quad</i> 41
W3LPL		<i>Slopers</i> 173	<i>3-L</i> 312	<i>4 over 4</i> 807	<i>4-L</i> 100	<i>3-L</i> 32
W6OUN	6	<i>Wires</i> 225	<i>3-L</i> 781	<i>5-L</i> 343	<i>5-L</i> 453	<i>5-L</i> 31
WB4YLG	6	<i>1/4λ Vert</i> 146	<i>2-1/4λ Vert</i> 256	<i>4-L Quad</i> 826	<i>4-L Quad</i> 184	<i>4-L Quad</i> 22
W7IR	<i>Vert</i> 4	<i>1/4λ Vert</i> 106	<i>3-L</i> 709	<i>5-L</i> 460	<i>3-L</i> 220	<i>5-L</i> 36
K4GSU	<i>1/2λ GP</i> 13	<i>Bobtail</i> 96	<i>3-L</i> 252	<i>4-L</i> 792	<i>3-L</i> 74	<i>3-L</i> 24
K3YUA		<i>L.W.</i> 187	<i>2-L</i> 216	<i>TH6DXX</i> 757	<i>TH6DXX</i> 71	<i>TH6DXX</i> 12

PHONE						
	160	80	40	20	15	10
W3WJD		<i>1/4λ GP, LW</i> 389	<i>2-L</i> 152	<i>5-L</i> 1186	<i>6-L, 4-L</i> 170	<i>4-L, 3-L</i> 37
W6RR		<i>Vert</i> 108	<i>3-L</i> 342	<i>5-L</i> 764	<i>6-L</i> 780	<i>7-L</i> 76
W6HX	5	<i>Wires</i> 190	<i>3-L</i> 470	<i>5-L, TH6DXX</i> 524	<i>5-L, TH6DXX</i> 609	<i>5-L, TH6DXX</i> 56
K4VX	1	<i>Slopers</i> 97	<i>3-L</i> 98	<i>4-L Quad, 5-L</i> 916	<i>4-L Quad</i> 146	<i>4-L Quad</i> 33
W4QCW	8	<i>Dipole</i> 137	<i>2-L</i> 173	<i>TA-33</i> 680	<i>TA-33</i> 94	<i>TA-33</i> 35
W3LPL		<i>Slopers</i> 98	<i>3-L</i> 152	<i>4 over 4</i> 716	<i>4-L</i> 165	<i>3-L</i> 36
W3BGN		<i>Dipole</i> 110	<i>402 BA</i> 113	<i>TH6</i> 840	<i>TH6</i> 114	<i>TH6</i> 14
WA1KID	1	<i>Dipole</i> 93	<i>Wire Beams</i> 54	<i>4-L Quad</i> 882	<i>4-L Quad</i> 114	<i>4-L Quad</i> 15
WA1PID		<i>Slopers</i> 91	<i>3-L</i> 110	<i>4-L</i> 721	<i>4-L</i> 134	<i>3-L</i> 11
W2MB		<i>1/4λ Vert</i> 104	<i>2-L</i> 112	<i>3-Band Yagi</i> 620	<i>3-Band Yagi</i> 143	<i>3-Band Yagi</i> 34

Each box contains the operator's contacts on a band, plus his antenna(s) for that band.

Washington
W9IRH/7 472,800-160 985-C-74
W7BRU 79,500-100 265-C-49
W7LAV 28,080-60 156-C-22
W7LZF 22,770-66 115-C-14
WA7GYR 9,000-40 75-E-8
K7RSB 7350-35 70-C-10
K7MOK 1938-17 38-C-4

Multi-Single
W7VRO (+W7S DQM EKM WA7ZWG) 401,166-171- 782-C-42

Wyoming
W7INH 85,323-137- 232-C-38

8

Michigan
WA8TBQ 641,160-260 822-C-75
W8TWA 348,480-220 528-C-89
WB8IOT 18,240-64 95-C-16
WB8SIB 8280-46 60-C-5

Multi-Single
W8NGO (+W8S CLR ONA SRK) 387,900-220 587-C-80
WA8YVR (+WA8HB) 62,304-88 236-C-15
K8MXC (+WA8DLO) 61,632-96 214-C-43

Ohio
WA8YWX 416,160-204 680-C-74
W8ZCO 113,787-141 269-C-31
W8FJS 76,266-114 223-C-61
WB8FOS 44,145-109 135-C-20
W8DWP 17,019-61 93-C-9
K8HBN 8418-46 61-C-8
W8NPF 7524-38 66-C-19

Multi-Single
W8LTL (WAILKU WB8S HHP IBZ JUI JXS OUE) 378,963-237- 533-G-61
W8OKF (+WB8MFE) 233,856-168 464-C-60
WB8IAY (+WA8S LXW ZAN WB8BIU) 218,124-166 438-C-80

West Virginia
WB8LFP 6960-40 58-D-

9

Illinois
W9CTY 371,628-222 588-C-60
W9OHH 349,353-227 513-D-
WA9VPR 206,208-179 384-C-70
W9DWQ 149,145-163 305-C-33
W9WYB 112,240-140 267-C-1
K9UKM 107,320-132 265-B-32
WB9IYO 14,094-58 81-B-30
WB9ERO 14,016-64 73-C-7
W9GSB 8418-46 61-A-14
K9DWK 7656-44 58-F-11
WA9AAT 624-13 16-C-3
W9HPG 540-12 15-A-10

Multi-Single
WA91VL (+WA9S LZA QAL WA9JHO) 351,780-220 533-C-86
W9ODK (+WA9PBK) 126,567-147 287-B-40
W9DY (+2 meter net) 43,428-94 154-C-23

Indiana
WA9BWB 646,914-274 787-C-70
W9ILT 619,164-252 819-C-80
WB9CEP 270,144-192 469-F-74
WB9MDB 54,240-107 169-E-17
K9VQK 40,848-92 148-C-31
W9CL 20,100-67 100-C-8
W9SFR 13,608-56 81-C-9
WA9RJI 7788-44 59-B-9
K5LZT/9 3-1-1 A-1

Wisconsin
WB9GGD 57,942-111 174-G-44
W9NDS 2970-30 33-A-7

Multi-Single
K9BED (+WA9JOO) 6480-36 60-B-17

0

Colorado
WA0CVS (WB0DJY, opr.) 650,589-229 947-C-76

Multi-Single
W0MYN (+WB0S CMM EGZ GAZ HBS) 545,664-224 812-C-80
K0KKU (+W0S MNI YDM WA0S AWH GWL IMX TTJ YFU WB0NYN) 445,568-188 790-C-46

W0LJF(+K0PVI)
12,771- 43- 99-C-10

Iowa
W0PCO 203,658-182 373-C-31
W0FHE 112,140-140 267-C-30
WA0VDX 100,914-139 242-C-21
W0EGI 1377-17 27-B-3
WB0GUU 720-15 16-B-8
W0LJI 189-7 9-B-3

Kansas
W0IUB 181,863-167 363-C-31
WA0AGN 52,722-101 174-C-36
WB0KJW 3936-32 41-B-

Multi-Single
K0KU (K0CVA WB0FGV) 392,913-231- 567-C-88

Minnesota
W0NAR 95,580-135 236-C-6
WA0KQU 24,750-75 110-C-15

Multi-Single
WB0BQG (W0JIE W9NLC +XYL) 40,656-88 154-C-26

Multi-Multi
WA0ENP (+WA0S BWM MHJ WB0S ANT DSJ) 333,666-222 501-G-96

Missouri
WA0PAO 194,706-174 373-C-55
K0IFL 55,968-88 212-B-31
WB0HDP 330-10 11-B-5

Multi-Single
W0EEE (WB0OEM WA9FAT WB0GQP WN0QEK R. Thrasher) 278,586-201 462-C-75

Nebraska
WA0ZPM 33,615-83 135-C-30
WA0LRQ 1080-15 24-B-8

North Dakota
K0ALL 25,530-74 115-C-12

South Dakota
WA0ONL 144,144-154 312-C-

DX PHONE ALL BAND AFRICA

Angola
CR6GA (CR6XX, opr.) 932,292-174-1786-B-52

Cameroon
TJ1AD 373,296-112-1111-C-29

South Africa
ZS6DW 1,224,300-175-2332-B-40

Mauritania
5T5CJ 416,568-136-1021-B-41

Senegal
6W8FP 2,015,181-203-3309-B-60

ASIA

Japan
JA2JW 473,250-125-1262-C-
JA1XMS 44,145-45 327-B-30
JH1GTO 42,054-43 326-B-32
JR1KYC 19,080-30 212-B-17
JH1OBS 14,775-25 197-A-35
JA1Z 4,029-17 79-A-4
JA1YZK 2964-13 76-A-9
JA3VOV 2058-14 49-A-
JA4UDP 651-7 31-A-10
JD1AJG 648-8 27-A-
JF3CIO 528-4 44-A-5
JA1DO 486-9 18-B-3
JA0FMB 255-5 17-A-
JR3RLG 207-3 23-A-4
JA2OZI 24-1 8-A-

Multi-Single
JA9YMM (JA9S AG APS BE BJ ESZ LJ) 139,092-67 692-C-
JA3ZBI (multiop) 43,092-42 342-B-
JA9YBA (JA9S DZS GLL JH1GUO JH2SGU JR2AKB) 42,000-40 350-C-
JA2ZHX (JA2S AD EMP JEM JH2S HUQ WAU JR2PST) 3132-12 87-B-6
JA1ROJ (+JA1XMS) 156-4 13-B-3

Asiatic R.S.F.S.R.
UA0FGM 388,731-107-1211-B-

Multi-Single
UK0LAB (multiop) 145,485-53 915-B-

EUROPE

Portugal
CT1OY 11,934-26 153-A-
Azes

Azores
CT2BN 406,770-130-1043-B-

Federal Republic of Germany
DL6WE 89,964-63 476-C-
DK5EZ 36,846-46 267-C-20

German Democratic Republic
DM3PCK 1386-14 33-B-

Spain
EA3SA 322,284-107-1004-C-32

France
F6CLM 3900-20 65-A-

England
G2QT 37,962-57 222-B-
G5BJM 173,052 35-192-A-13
G4BBA 3213-21 51-B-18

Multi-Single
G3TJW (+G3s HTA RUV RUX) 1,115,940-140-2657-A-
G3UBR (GYEG CW3ZQN G4s BCH BTY G3CVN CWIE) 739,332-132-1867-C-96
G3UJE (+G3s SZG VKW ZLI) 560,472-121-1545-B-96
G3RCV (G2MI G3s RZP VLX XMD ZAY G4BAL Bob Chris) 173,052 35-192-A-13
G4ALE (G3s SIX UFY WRR XJO ZMF G4CZB) 94,878-63 502-B-60

Hungary
HG5A (HA5s DE FM HO KO HA6NN) 365,700-100-1219-C-96
HA5KKN (multiop) 32,535-45 241-B-96
HA9KPU (multiop) 25,164-36 233-B-
HA0KLE (HA0S LJ LM LZ MJ M. Roman) 21,930-34 215-B-
HA6KNB (HA6s NA NN NP NY Lantos I.) 16,275-35 155-B-30
HA3KHC (multiop) 10,980-30 122-B-
I3MAU 803,142-139-1926-B-70
I1NUC 355,173 91-1301-B-39
I4QZV 160,176-94 568-B-20

Multi-Single
ISDFB (WB4ZES WB5FHE) 69,231-47 491-C-48

Norway
LA6HL 151,272-66 764-B-23

Market Reef
OJ0MA 168-7 8-B-

Czechoslovakia
OK30KYS (OK30S FRF FVA) 20,313-37 183-B-14

Belgium
ON4NC 6075-27 75-B-7

Denmark
OZ9VO 2067-13 53-A-4

Netherlands
PA0AEH 10,788-29 124-A-17

Multi-Single
PA7SMK (+PA9WRR) 177,606-78 759-B-36
PA0GN (PA0BRO) ERA GIN NRA NRN PKD TAW) 65,016-43 504-A-24
PA0ADC (multiop) 29,007-33 293-A-
PI1ARU (PA0S OKLE TO VLY) 6561-27 81-C-8

Sweden
SK2DR (SM2S CEW EKM) 111,492-57 652-B-60

Poland
SP5DZI 1680-16 35-A-11

Multi-Single
SQ6PZB (SP6FAF W. Nowak) 137,286-58 789-B-

European Russian S.F.S.R.
Multi-Single
UK6LAA (multiop) 28,665-39 245-B-
UK1ZAZ (multiop) 16,368-31 176-B-
UK3ABO (multiop) 15,876-28 189-B-
UK3ABB (multiop) 12,992-29 150-B-

Ukraine
UK5MAF (multiop) 6300-20 105-B-
UK5IAZ (multiop) 3528-14 93-B-

NORTH AMERICA

Bahama Islands
C6ABN 474,180-140-1129-C-22

Multi-Single
W4BRB/C6A (+WA4FAP) 801,420-148-1805-A-42

St. Pierre & Miquelon Islands
Multi-Single
FP9MM (+W1MIW WA1TZV) 63,180-54 390-A-31

French Guiana
FY0BHI 2,556,576-269-3168-C-

Dominican Republic
HI8XAW 2,299,209-209-3667-C-51

Puerto Rico
Multi-Single
KP4AXM (K1OTI, WK8YR, WB0JHW) 2,099,052-199-3516-C-96

Canal Zone
KZ5BC 4,157,484-268-5171-F-61

Costa Rica
TI2WX 2,313,036-242-3186-A-
TI2BEV (K4VW, opr.) 1,540,296-216-2377-C-

Antigua
Multi-Multi
VP2A (K5s FVA YMY WASAWF W5s UDK NOP KPAEJ VP2AC) 5,253,147-261-6709-B-48

Saint Lucia
VP2LAW 193,923-87 743-B-14

Bermuda Islands
VP2GD 900,000-160-1875-A-31

Cayman Islands
ZF1AC 2,015,328-224-2999-B-48

Multi-Single
ZF1AU (K4YFQ WB4VVF) 1,419,588-188-2517-C-
ZF1CW (W0S CW JJC ZC VTE75V) 799,848-168-1587-B-21

Mexico
6F8J 3,368,169-251-4473-C-62
XE1LLS 3,056,634-238-4281-C-

Jamaica
K9KDJ/6Y5 533,280-160-1111-A-
8P6AA 575,586-171-1122-B-53

Barbados

OCEANIA

Guam
KG6JAR 17,391-31 187-C-

Hawaiian Islands
KH6IJ 2,473,428-218-3782-C-72
KH6IJ 1,666,692-201-2764-C-54
KH6HML 427,800-155-920-C-18
KH6GQP 356,454-138 861-C-5
KH6RS (K2SIL, opr.) 4260-20 71-C-1

Multi-Single
KH6GKD (+KH6s BVS IIX) 2,379,276-212-3741-C-96

Kwajalein
Multi-Single
KX6BU (KX6s LR MV MW MZ) 244,268-108-757-C-12

<i>Australia</i>	VK4VU 350,064-132-884-A-30 VK5MF 18,135-155-39-B-32 VK4PJ 2460-20-41-B-	<i>Southern Texas</i>	K5ABV 178,770-118-505-A-56 WB5DIZ 19,224-36-178-D-14	<i>Czechoslovakia</i>	OK3ØBOB 18,720-39-160-D- OK2KLI 405-9-15-A- OK3ØXC 90-5-6-A- OK3ØBIH 60-4-5-A- OK3ØPGU 3-1-1-A-	5	<i>Arkansas</i>	WA5VDH 84,816-114-248-C-49	
<i>New Zealand</i>	ZL3GG 369,489-137-899-A-35 ZL2GJ 13,338-26-171-B-22	<i>East Bay</i>	WA6IQM 106,488-58-612-B-2	<i>Sweden</i>	SM5AOE 12,420-30-138-B-	<i>Northern Texas</i>	WA5LUM 30,825-75-137-F-24 KSZJP 22,512-67-112-C-22		
SOUTH AMERICA		<i>Los Angeles</i>	K6OVJ 232,023-79-979-C-42	<i>Poland</i>	SP5GH 1170-15-25-B-	<i>Southern Texas</i>	K5DEP 2652-26-34-A-10		
<i>Bolivia</i>	CPIAT 65,892-76-289-B-12	<i>San Diego</i>	WB6VME 12,096-21-192-A-17 WA6PDE/6 1845-15-41-B-10	<i>Ukraine</i>	UB5VK 105-5-7-A-	6	<i>Los Angeles</i>	K6OVJ 109,746-78-469-C-	
<i>Argentina</i>	LU2A (LU2AFH, opr.) 1,615,320-210-2564-C- LU8A (LU8AJG, opr.) 732,312-168-1492-C-32	<i>San Joaquin Valley</i>	K6OZO 70,800-59-400-C- K6AO 2415-23-35-C-4	<i>Andorra</i>	C31IU (FØAXP, opr.) 46,956-52-301-A-13	<i>Orange</i>	WAØKXJ/6 60-4-5-A-2		
<i>Peru</i>	OA8V 138,348-126-366-A-	<i>Sacramento Valley</i>	W6ZGM 17,622-33-178-C- W6NKR 4896-24-68-C-11	NORTH AMERICA		<i>Santa Clara Valley</i>	W6JKJ 1125-15-25-C-3		
<i>Brazil</i>	PY7AOR 8856-36-82-B-	7		<i>Alaska</i>	KL7DVE 15,159-31-163-B-	<i>San Diego</i>	W6ITY 63,726-86-247-C- WA6PDE/6 4224-32-44-B-18		
<i>Multi-Single</i>	PT 2 ZBS (+PT 2 ZBR PY1ZAE W2SKE) 1,885,884-182-3454-C-96	<i>Nevada</i>	WAØKXJ/7 2130-10-71-B-9	<i>Puerto Rico</i>	KP4EAS 253,890-93-910-F-16	7	<i>Washington</i>	W7YTN 20,358-58-117-C-40	
<i>Surinam</i>	PZ5FB (W2FCR, opr.) 629,100-180-1165-A-16	<i>Washington</i>	W7YTN 47,040-49-320-C-49	8		8			
<i>Venezuela</i>	YV4YC 3,110,508-249-4164-C-75	<i>Michigan</i>	K8HLR 84,420-105-268-E-42	W/VE PHONE LOW BAND CANADIAN		<i>Michigan</i>	K8HLR 81,900-105-260-C-43 K8LUU 39,780-85-156-C-45		
W/VE CW LOW BAND CANADIAN		<i>Ohio</i>	W8IBX 1725-23-25-A-11	<i>Ontario</i>	VE3BMV 17,856-62-96-C-23 VE3BVD 4725-35-45-C-10 VE3JT 192-8-8-A-2	<i>Ohio</i>	WA8ZDF 160,308-146-366-F-68 WA8LXJ 11,475-45-85-C-28 WB2FGA/8 1932-23-28-A-12		
<i>Ontario</i>	VE3BMV 7638-38-67-C-22 VE3BVD/3 9555-49-65-C-13	<i>Illinois</i>	WA9JCO 11,250-50-75-B- W9BZW 7020-45-52-C-8	<i>Manitoba</i>	VE4SL 819-13-21-C-3	9	<i>Illinois</i>	W9MLG 39,192-92-142-C-44 W9CH 25,925-75-113-C-23 W9BZW 14,580-54-90-C-21 W9NZM 8580-44-65-C-12	
<i>U.S.A.</i>		<i>Indiana</i>	K9UWA 15,045-59-85-C-11	<i>British Columbia</i>	VE7EL 23,958-66-121-C-32 VE7IG 11,739-43-91-C-27	<i>Indiana</i>	K9UWA 29,748-74-134-C-18		
1		<i>Iowa</i>		<i>U.S.A.</i>		<i>Wisconsin</i>	WB9MOG 8436-37-76-C-25		
<i>Eastern Massachusetts</i>	K1NOL 173,940-130-446-F-30 W1MX (WAØOCU, opr.) 116,532-117-332-C-49 W1BB/1 1530-17-30-A-6	<i>Kansas</i>	WAØTKJ 5859-31-63-F-18	1		<i>Colorado</i>	WA2WMT/Ø 15,930-59-90-C-26		
<i>Western Massachusetts</i>	WA1FBX 6480-40-54-C-15	DX CW LOW BAND ASIA		<i>Connecticut</i>	W1EBC 125,001-129-323-C-50	<i>Iowa</i>	WBØOAZ 972-18-18-C-5		
2		<i>Japan</i>	JR1BRV 35,466-46-257-B-24 JH1RFM 17,091-27-211-B- JA7GAX 11,655-21-185-A-28 JA2AN 10,935-27-135-C-18 JA1DUH 9144-24-127-E-16 JH2BFT 8040-20-134-B-20 JAØATO 6528-17-128-B-15 JA1HOM 6375-17-125-C-26 JA7QVI 3354-13-86-B- JA4JIG 3240-12-90-A-25 JA1RUJ 288-11-85-B-14 JA1FUJ 2475-11-75-B-14 JF1SVV 2220-10-74-A-13 JH1LKH 2196-12-61-B-12 JF1COE 1776-8-74-A-26 JA3BCT 1674-6-93-A- JA6GPR 1608-8-67-A-20 JR3OYM 1428-7-68-A-13 JA1KJW 1260-7-60-A-13 JA4GXS/4 1188-6-66-A-14 JA3ARM 1140-10-38-C-3 JH1EGY 1095-5-73-A-12 JAØCE 660-5-44-A-20 JA7AVG 468-6-26-A-8 JA8CAZ 420-4-35-A-6 JH2IRH 360-3-30-A- JH3UWZ 312-4-26-A-5 JA2HFB 300-4-25-A- JA2OZI 300-4-25-A- JR3STC 156-4-13-A-2 JH4FQJ 153-3-17-A-5 JA2CPD 150-5-10-A- JA1IX 144-2-24-A-7 JA9LVD 90-3-10-A-6 JH2AGX 81-3-9-A-5	<i>Eastern Pennsylvania</i>	K3ZOL 3441-31-37-C-6	2		<i>Kansas</i>	WAØTKJ 16,416-57-96-F-24
<i>Eastern New York</i>	WA2AUB 12,096-56-72-F-21 WB2EOO 1380-20-23-A-3	<i>Georgia</i>	WB4RUA 7740-43-60-F-5	<i>Western Pennsylvania</i>	W9SZR/3 10,212-46-74-C-14	<i>Missouri</i>	WAØJNF 6372-36-59-A-25		
<i>N.Y.C.-L.I.</i>	WA2OVG 126-6-7-B-10	<i>Southern Florida</i>	W4PZV 48,954-82-199-C-30 W4BAA 28,314-66-143-C-20	<i>Maryland-D.C.</i>	W2RAD 12,324-52-79-C-16 WA2DZU 7080-40-59-C- <i>Western New York</i> WA2LCC/2 8520-40-71-E-14 WB2AIO/2 912-16-19-C-2	<i>South Dakota</i>	WAØCPX 39,732-86-154-C-		
<i>Northern New Jersey</i>	WB2JYM 114,243-113-337-E-50 W2HUG 10,230-55-62-A-18	<i>Tennessee</i>	K4PR 324-9-12-C-1	3		DX PHONE LOW BAND ASIA			
<i>Southern New Jersey</i>	W2ESX 4002-29-46-C-12	<i>Virginia</i>	K4JD 36,081-57-211-C-34 W4UQ 28,320-80-118-C-24 W4EZ 1872-24-26-C-3	<i>Alabama</i>	K4BBF 6039-33-61-C-10	<i>Japan</i>	JA1ELY 28,476-28-339-B-20 JA2IYJ 28,188-36-261-C-15 JA7GAX 6588-18-122-A-21 JH1APZ 5856-16-122-B-21 JA1HOM 936-8-39-C-11 JA1IX 225-5-15-A-5 JA9LVD 153-3-17-A-10 JA4GXS/4 144-3-16-A-9 JA2AIR 99-3-11-C-		
<i>Western New York</i>	W2FR 21,513-71-101-C-8 WA2QKF 2250-25-30-C-18 WA2AOG 48-4-4-A-1	4		<i>Georgia</i>	W4GW 48,096-96-167-C-20 K4LRO 13,050-50-87-C-16	<i>Portugal</i>	CT1MW 28,796-46-208-C-6		
<i>Georgia</i>	WB4RUA 7740-43-60-F-5	EUROPE		<i>North Carolina</i>	W4UW 1764-21-28-C-13	<i>Spain</i>	EA4LH 104,400-60-580-B-16		
<i>Southern Florida</i>	W4PZV 48,954-82-199-C-30 W4BAA 28,314-66-143-C-20	<i>Federal Republic of Germany</i>	DL1VU 25,596-54-158-E-8 DK4EX 6669-79-117-C-	<i>Southern Florida</i>	W4BAA 35,280-84-140-C-20	<i>France</i>	FØAXP 10,266-29-118-A-7 F5AD 9180-15-204-A-		
<i>Tennessee</i>	K4PR 324-9-12-C-1	<i>England</i>	G2RO 13,230-30-147-A-15	<i>Virginia</i>	W4UPJ 71,190-105-226-C-45 W4YHD 6048-36-56-C-5 W4EZ 5076-36-47-C-7	<i>Italy</i>	IVØAMU 41,454-47-294-B-26		
<i>Virginia</i>	K4JD 36,081-57-211-C-34 W4UQ 28,320-80-118-C-24 W4EZ 1872-24-26-C-3	<i>Scotland</i>	GM3BKC 810-10-27-A-6			NORTH AMERICA			
5		<i>Switzerland</i>	HB9KC 17,280-32-180-B-6			<i>Guadeloupe</i>	FG7AK (W2TTG, opr.) 3420-19-60-B-2		

9J2EP	Zambia	358,221- 97-1231-B-
	ASIA	
	Thailand	
HS2AIG	84- 4- 7-C- 4	
	Japan	
JA1BAX	96,195- 53- 605-B-28	
JA1PCY	86,715- 47- 615-B	
JA2MGE	23,400- 30- 260-C-13	
JA1PUK	11,760- 28- 140-B-10	
JH1ZIS (WA3VWJ, opr.)	11,151- 22- 177-A-12	
JA7AMK	6534- 18- 121-C	
JA1EMX	6222- 17- 122-B- 9	
JA2HGA	5280- 20- 88-B	
JA0AYR	4248- 8- 177-B- 6	
JH2RVP	3060- 10- 102-B	
JA1AAT	3024- 16- 63-B	
JA1WL	2844- 12- 79-B-11	
JA3BUB	224- 7- 108-A- 6	
JA7NY	2196- 12- 61-A-14	
JA3IBU	2130- 10- 71-B- 5	
JA6JRI	1890- 9- 70-B- 7	
JA0AIE	1782- 11- 54-B- 7	
JA0FXV	1701- 9- 63-B- 7	
JA1WVO	1683- 11- 51-B- 6	
JA9JL	1560- 10- 52-A- 9	
JH1MTR	1116- 8- 59-C- 5	
JA7KXD	1380- 10- 46-B- 6	
JH3XCU	1092- 7- 52-A- 4	
JA0YBY	918- 6- 51-A- 7	
JH3FYR	738- 6- 41-A- 3	
JA0YRW	675- 5- 45-A- 3	
JA7CPW	480- 4- 40-A- 5	
JA1BTI	396- 6- 22-A- 4	
JA1QXE	360- 3- 40-A- 3	
JA2TKO	324- 4- 27-B- 2	
JE1UVT	306- 2- 51-A- 5	
JR2NFJ	300- 4- 25-A- 4	
JA3BX	252- 4- 21-B- 6	
JR2JZR	252- 3- 28-A- 5	
JA4PPR	225- 3- 25-C- 6	
JA1KH	162- 4- 12-A- 3	
JA2BNN	140- 4- 12-A- 3	
JA1EOH	135- 3- 15-A- 4	
JA3YJQ	114- 2- 19-A- 1	
JA3ELU	72- 3- 8-A- 4	
JA1BTH	66- 2- 11-A- 1	
JA2ATE	36- 1- 12-A- 4	
JA7BCE	30- 2- 9-A- 4	
JR3CVO	27- 1- 9-A- 4	
	Asiatic R.S.F.S.R.	
UA0CBO	30,336- 32- 316-B-	
	India	
VU2GDG	4440- 20- 74-B- 3	
VU2ABC	3360- 16- 70-A- 8	
	EUROPE	
	Portugal	
CT1CV	54,522- 39- 466-A-22	
	Spain	
EA3XA	50,922- 41- 414-B- 4	
EA2JD	35,793- 41- 291-A-20	
	Federal Republic of Germany	
D10BA	184,860- 60-1027-C-30	
D12AA	77,490- 42- 515-B-19	
D11ET	27,720- 32- 264-D-24	
DK5VO	13,608- 27- 168-A-24	
DK4EX	4380- 20- 73-C	
DL1RO	3078- 18- 57-B- 6	
DL1YA	1872- 16- 39-B- 6	
	German Democratic Republic	
DM2DRN	240- 8- 10-A-	
	France	
F5RC	29,274- 34- 287-B-	
F0BHC	1023- 11- 31-B- 3	
	England	
G3SWX	3186- 18- 59-B-	
	Wales	
GW4CYD	2805- 17- 55-B-	
	Italy	
I6FLD	252,858- 67-1258-B-	
I3GRX	25,194- 34- 247-B-22	
	Norway	
LA3JQ	14,280- 35- 136-A-	
LA3UQ	2106- 18- 39-B-	
LA1HI	378- 6- 31-B-	
	Finland	
OH2LU	1890- 15- 42-C-	
OH7SC	1683- 17- 33-B-	
	Czechoslovakia	
OK30ATE	60,984- 42- 484-B-	
OK30PEQ	5796- 21- 92-A-	
OK30FAR	1980- 15- 44-A-	
OK30AJN	1080- 12- 30-B-	
OK30BIH	726- 11- 22-A-	

OK30KZ	294- 7- 14-A-
	Belgium
ON4XG	4320- 20- 72-B-
	Denmark
OZ6MJ	29,372- 22- 112-B-
OZ1HX	3162- 17- 62-A-
OZ6PI	336- 8- 14-A-
PA0EHF	7521- 23- 109-A-10
	Netherlands
SQ9KRT	29,376- 34- 288-B-
SQ6PAZ (SP6DVP, opr.)	306- 6- 17-B-
SP9AVZ	264- 8- 11-A-
SQ6FJG	48- 4- 4-A-
	Sweden
SM5CAK	7848- 24- 109-B-
SM7BXX	198- 6- 11-B-
	Greece
SV0WGG	19,845- 35- 189-B-
	Ukraine
UY500	52* 8- 22-B-
	Yugoslavia
YU3EY	109,950- 50- 733-B-20
YU2OB	9198- 21- 146-B-6
	Gibraltar
ZB2USA (W9JVF, opr.)	31,284- 33- 316-A-11
	NORTH AMERICA
	Alaska
KL7HQR/KL7	55,050- 50- 367-C-30
	Puerto Rico
KP4EAS	1,399,464-132-3534-C-49
K1HMU/KP4	664,416- 96-2307-C-25
	Canal Zone
KZ5WA	61,566- 62- 331-B- 2
	Saint Maarten
PJ8AA (W2BBK, opr.)	510- 10- 17-B- 1
	Bermuda Islands
W6PEV/NP9	42,924- 49- 292-A-15
	Nicaragua
YN3ZLW	5040- 24- 70-A- 7
	OCEANIA
	New Caledonia
FK8AH	6450- 25- 86-A-
	Hawaiian Islands
KH6GOW	790,704-114-2312-C-46
KH6IGC	364,206-101-1202-F-17
KH6JJA	26,532- 44- 201-B-24
	Australia
VK4UR	15,120- 30- 168-B-
VK2OW	648- 9- 24-B-
	SOUTH AMERICA
	Chile
CE6EZ	1,669,416-152-3661-C-
	Uruguay
CX6CT	211,680- 98- 720-D-12
	Ecuador
HC1BU	1,769,427-183-3223-C-
WB8ABN/HC5	368,532-116-1059-C-11
HC1CW	143,910- 90- 533-C- 5
HC1MM/HC5	65,025- 75- 289-B- 3
	Peru
OA4CJ	126,000- 80- 525-B-10
	Brazil
PY4KL	348,300-135- 860-C-
PY7VNY	257,898-106- 811-C-
PY4ALC	236,964- 98- 806-
PY3CFP	191,187- 97- 657-B-30
PY1CHP	181,578-106- 571-B-22
PY1MO	148,212- 92- 537-B-30
PY2EGM	133,500- 89- 500-A-
PY1FI	25,602- 34- 251-C-
PY1BOL	1131- 13- 29-C- 1

CHECK LOGS

W/VE CW W6BYB/VE1, W2NCL, W2RRY, WA3LBG, WA4JK, W6EYC, W6HPB, W6IRA, W6KC, W6RCZ, W7WV, W8FEM, W8SS, WB0FGF, DX CW C07SG, DJ9HD, DL1RB, DL-616/1491158, DM2BNI/p, DM2CCM, DM2CHN, DM2COJ, DM2CYO, DM2CZI, DM2DXD, DM2YLI, DM-SWL-5599/L, F3IM, G2AJB, HP1AC, KL7PL, LA4DM, LZ1KSP, OE3EVA, OK30AEH, OK30BGR, OK30BOV, OK30TDC, OK30US, OK30VK, OZ1TD, PA0TA, PY2FRW, PY8AHS, SM2COR, SM0GBB, SM0IX, SP4AVG/6, SP5GOL, SQ3CB, SQ6FER, SQ7EJS, UA3ACD, UA3DDF, UA3ST, UA3VAQ, UA3XAW, UA4BI, UA6BAC, UA9BBF, UB5FAQ, UB5MDL, UB5MDP, UB5ZAT, UC2CED, UK5EDQ, UK5UAC, UK8MAA, UY5LO, UW4NH, UW6CV, VP2KK, YU3AE/X, YU3DBJ, YV5KL W/VE PHONE VE3DCI, VE6AKL, VE7AJ, W2CVW, WB2FXY, WA3AFQ, K4KPH, WA4JK, W4TL, WB4QI, WB4OSN, W5UCY, W7AE, W0DGS/4, W0YUQ, DX PHONE CT1OY, DM2COJ, DM3WCQ, G3ZKE, HK3DFF, HV3SJ, LA3KT, LA4DM, OK30KAP, PA0RWS, PA0WAC, PY1DDE, PY2ELV, SM5GH, SP5GKN, SP6DB, SM7ECX/SM7, SQ5AMX, SQ7ETG, UA3VAQ, UP2BAW, *Y4T.

DISQUALIFICATIONS

Phone: W6CJP, K6JAN, WB4QWM, KH6BZF, K2FJ (opr. of VP2DX), K2BPP and K2AAJ (opr. of VP2EEF).

FEEDBACK

Feedback from the November, 1974 Sweepstakes Contest. See results in May, 1975 QST.

1. KH6RS should have been listed as the Pacific Division leader, multi-operator, cw, instead of W6BIP.

2. WASLES should have been listed as Clean Sweep both modes, W2FR and W5ONL/VE3 both Clean Sweeps on cw.

3. WA3PHQ (EPA, cw) should have been listed as low power, and the cw winner for the Penn Wireless Association should have been K3HNP, not WA3PHQ. WA3PHQ was listed as WA3PHO in the phone scores.

4. WB8JBM and all operators there were incorrectly listed as WN8 callers. Also, WB8JBM/8 should have been listed as the Great Lakes Division leader on both modes, multi-op category.

5. WA0RLD, low-power class, Minnesota, phone, should have been listed as sixth, with a score of 20,094. The Minnesota low-power phone winner then becomes W0OWY.

6. K4FOB should have been listed as low power, phone, North Carolina, instead of high power. That places him first in N.C. in the low-power category and seventh in the "QRP Champs" listing on phone.

7. WA8YWX (cw, Ohio, low-power) was operated by WN8RQU. That makes him the top Novice score, with 27,018 points.

In the MAVTI-40, Part I, June QST, in Fig. 1, page 36 the value for C6 should be 180-pF, silver mica. Also, R19 should be 6.8 ohms, not 800 ohms.

In Part III of "Learning to Work with Semiconductors," for July 1975, the following changes and additions should be noted. In Appendix I:

$$X_{RFC1} = 10 \times Z_{IN} = 1320$$

$$X_{RFC2} = 10 \times Z_{O} = 50$$

$$X_{C1} = \frac{A}{Q+B} = \frac{2244}{25.16} = 89.19$$

$$C_1 = \frac{1}{2\pi f X_{C1}}$$

In Appendix II:

$$X_{L4} = \frac{QRO' + (RIN' Ro' / XC14)}{Q^2 + 1}$$

$$X_{L5} = \frac{QRO + (RIN Ro / XC16)}{Q^2 + 1}$$

*Denotes headquarters staff, not eligible for awards.