

Results, 39th ARRL November Sweepstakes

Reported by Rick Niswander,*
WA1PID/WA8VRB

PRESS ON, INDEED. The adjacent treatise (sent to us through the kind graces of the XYL of W9DOB) exemplifies the one characteristic that makes great contesters great. No contester, no matter how talented or erudite in the tricks of contest operating, will win without the firm application of the seat of the pants to the seat of the chair for hours of key-swatting or mouth-moving.

We all start from humble beginnings in the contest game. KN1ZND had only 25 QSOs in 26

*Asst. Communications Mgr., ARRL.

**PRESS ON
NOTHING IN THE WORLD CAN
TAKE THE PLACE OF PERSISTENCE.
TALENT WILL NOT;
NOTHING IS MORE COMMON
THAN UNSUCCESSFUL MEN
WITH TALENT. GENIUS WILL
NOT; UNREWARDED GENIUS
IS ALMOST A PROVERB.
EDUCATION ALONE WILL NOT;
THE WORLD IS FULL OF
EDUCATED DERELICTS. PERSISTENCE
AND DETERMINATION
ALONE ARE OMNIPOTENT.**

hours in his first contest – the Novice Roundup of 1963. KN1LPL did a bit better with 48 QSOs in 33 hours in the NR of 1960. In the 1955 NR KN4BAI topped the two previously mentioned laggards with 65 in 37. All pretty sad scores when compared with their current accomplishments. But these are scores from years ago and many a NR, DX Test and SS has passed since. It was only with the application of the principle established at the left that they became the type of contester they are now. Granted, talent, education in the tricks of the trade, and yes, even a little genius, all combined to help produce their scores of today. But without their stick-to-it-ivness, their willingness to try again after failure, their dogged persistence, they might have given up contests to pursue some easier, not so frantic, aspect of our (or another) hobby.

But this adage does not apply to the big contesters only, not by a long shot. As WA6PYS succinctly put it in his SS comments: "Very few contestants expect to win; otherwise they'd drop out when they find themselves hopelessly behind. But there is a strong urge to continue; to build up your score and skill." Most of us in highly competitive sections such as MDC, VA, WA, OH, CT, etc. know we don't have a chance to take the section certificate. We need to look at the contest from a different angle; still with an eye to our saying. Hold your own miniature competition with your friend down the street who has the same limitations as you, be they operator or equipment. Compete with yourself; compare last year's score with this one. Be careful, though. Setting too high a goal, such as shooting for the MDC section award using a tri-bander at 30 feet with average operating abilities, can sour one on contests. Set an attainable goal and go after it. If you succeed, you've won! You may not receive a piece of paper attesting your contest prowess but *you* know what you have done. A paper award can be chomped to bits by the family dog or burned to a crisp. A personal achievement, recorded historically in *QST*, is something you can remember as long as you live. There is something in each contest for each one of us. We need only look for it, set it as our goal, go after it and – hopefully – obtain it. Even if we don't quite reach our personal pinnacle, take heart in the fact that the only losers in Sweepstakes are those who don't participate.

The 39th November Sweepstakes, held November 11-13 on phone and November 18-20 on cw, registered a drop in entries of about 12% to 2065. Cw logs still outnumbered phone entries 1042 to 994; check logs numbered 29. Participation appeared high; scores were at approximately the same level as last year. We just didn't receive quite as many logs this time.

For the past few years the "Clean Sweep" has been easy on phone and difficult (to say the least) on cw. This year was no exception. Phone Clean Sweeps numbered a hefty 102 (a drop of 23) while cw Sweeps amounted to only 16 (down 13 from last year). Wyoming was the only section that could be remotely considered difficult on phone – we had 3 VE8s, 4 or 5 KL7s, bunches of VE4s and VE6s, a few VE5s and KZ5s and an adequate

TOP TEN

(Single Operator)

CW		PHONE	
W7RM	167,325	W7RM	240,975
W6MAR	162,225	W9YT	198,900
K6EBB	155,250	WA5JMK	195,600
W6HX	155,104	WA8ZDT	187,738
K1ZND	145,440	K1VTM	184,500
K1LPL/3	141,716	W5WU/5	182,400
W9YT	135,504	VE7WJ	178,125
VE7WJ	133,809	K6JAN	174,750
K5PFL	133,644	WB6VZI	173,667
W3IN	132,650	WA0QLH	173,100

supply of Vermont and VE1s. On cw, these sundry sections seemed to sink into the salty seas (which is kinda hard for a VE5). Nevada, Mississippi, VE8, W.I., VE6 and VE4 seemed to be the most difficult. They were there, however, since 16 lucky souls snagged all 75. Mega-thanks to those who participated, on either mode, from the usually hard-to-get sections. Your occasional answer to a CQ, or time spent being the object of a pile-up, is gratefully applauded by all SS participants. Your appearance is an important and exciting facet of the SS or any other contest. Congrats to the following who made the Clean Sweep on both modes: W8OK, W7RM (K7VPF, opr.) W6NUT, WB4YOJ, K4CG and W1ICP (WA1PID, opr.). Each year someone tries to make "75 in 75" (a Sweep in 75 contacts). This year W8OK accomplished that feat on both modes! Hq. made a Sweep on phone, receiving logs from all 75. On cw we had to settle for 74, lacking only Nevada.

The 1972 SS was the first contest in which the new disqualification criteria were applied - and applied they were. Numerous dupe checks were made, with most resulting in a lowered score. The penalty provision of the criteria (item 6 on page 55 of November 1972 QST) dropped some scores considerably. If you find your total scalped by a few hundred or thousand points your dupe checking procedure (or lack of it) is probably the culprit. If you still have a question on your entry (and yours alone) drop me a note and I'll lay my info on you.

Speaking of rules and such, the Contest Advisory Committee (W1BGD (chairman), W2EIF, W3BQV, K4BAI, K5TSR, W6DQX, K7NHV, WA9AUM, W0HP, KH6IJ and VE2NV) is ready

Second spot in SCV goes to WA6GFY, operated by WB6EXW. In his second year of SSing Gary racked up a very creditable 92K on phone. He heard two sections that he didn't work because they were operating in the Advanced section of the band.



Traversing the country from his WPA home to Michigan (attending MSU) to California (attending Berkley) and now settled (for a while anyway) in Southern Texas, WA3GBU/5 has experienced contest conditions from all over the U.S.A. Tom garnered 116K on cw (with help from 3 and 4 element monoband twirls at 70 feet) and was one of the operators at the nation-high phone multi-operator setup of WB5DTX. The licence plate is a memento of his California stay.

and willing to accept for study any comments or suggestions on the SS. Drop them a line.

A number of entrants remarked about the absence, in many cases, of manners, even downright rudeness, on the part of some. Having been on the soapbox before I'll let someone else have a go at it. K1VTM makes some good points on this subject (he is talking about the cw bash but his ideas are applicable to either mode): "Check out a new frequency before pouncing on it. IE, ?, or QRL? can help. Be sure to zero properly. Most cw filters have narrow passbands. QRM to adjacent channels will be minimized, too. Use a dupe sheet. How would you like to be called by the same station 6 times? Keep calls short. If the other guy has your call, repetition should be minimized. Don't take over a busy frequency. Courtesy dictates that the first guy there has preference to continue." Well said, Ron. The only thing I could possibly add to that is: *don't* repeat the exchange unless asked to do so. If you receive an exchange sent once, there is no reason to repeat your transmission two, three or even (gasp!) four times. If the guy on the other end needs a repeat he will ask for it - don't waste his time and yours reviewing your message. The most time consuming,





Number Ten in the country on phone, top Colorado, and top W0 is WA0QLH operated by WB0DJY. George was aided in his contact quest by monoband beams at 70 feet and a KW amplifier. The glass of ice water is a good way to keep your throat lubricated and prevent tonsil dehydration.

SOAPBOX

Clicks

and possibly the most frustrating, aspect of the SS is not the time you spend sending your exchange but the time spent by the guy you are working in sending his. 'Nuff said.

Congratulations to all section leaders. Your awards are scheduled for a May 15th mailing. The accomplishments (and disappointments) of you and all other participants cannot be chronicled in this short space; we leave that chore to the scores and the soapbox. Don't be disappointed if your picture or soapbox does not show up here. We get so many that prudent picking is the order of the day. Try again next year with a different picture or comment; you may more closely capture the situation.

We cannot leave this lovely lead without pausing to rejuvenate our tired minds with an imbibition of cool, clear statesman-like oratory from our very own master of melodic mottos and prolific prose, V.Y. Senny Tree, who said, "Before the contest begins SS stands for Sweepstakes; sometime in the middle it stands for So Silly and at the end, after hours of battered ears and broken pencils, SS stands for So Sleepy."

Thank you. . . . and goodnight. Zzzzzzzzz

I guess next year I'll have to increase my power to 10 watts. - (W4ZRJ) A KL7 dupe? Fantastic! - (W4OZF) Scylla and Charybdis are pickers compared to Murphy and Parkinson. Oh, woe is me! - (W2W0E/4) I'm willing to start taking a collection to send good cw ops to VE8 and KZ5 or to train any phone men who want to learn the code. - (W1BGD/2) Very pleased to hear of the new regulations governing contests. Wisely done! - (VO1CA) Was interesting as well as very frustrating to try QRP (8 watts) during the last half of the contest. Let's see. . . 55 QSOs at 8 watts makes it 7 QSOs per watt, therefore, I have come to the conclusion that if I run a kilowatt next year I should have 7000 QSOs! - (VE3EEW) Greatest achievement during SS was working WA4BAT and WB2MAN in consecutive QSOs. - (W4KFC) Crystal controlled on 7048, with a QRP signal thin as a prairie wind whistlin' through a barbed wire fence, and a background noise like a hundred empty freight cars rollin' down grade off a San Francisco slope - that's the SS biz! - (K4DHB) And so it was decreed: QRM shall reign. - (VE7BBL) Missed VE4. Heard one on 21 MHz. (VE4HH) but skip was bad at the time and he eluded me. Lost a lot of contacts just because I stubbornly kept looking for that last section. I also think that I worked the largest collection of lids ever. Why do some of these guys insist on repeating everything when they have already accepted the message that was sent just once? Ugh! - (W4DQS) My last SS was in 1962 (the old 40-hour variety). This one was great fun; a short period - do or die - and a meaningful exchange. - (W6MYP) One

(Continued on page 68)

DIVISION LEADERS

CW			PHONE	
Single Op.	Multiop.		Single Op.	Multiop.
K1LPL/3	W2FXA	Atlantic	W3GRF	K3WUW
W9YT	WB9BWN	Central	W9YT	WB9IDS
K0ORK	K0VYV	Dakota	WA0VKP	K0ZXE
W5WMMU/5	WA4UCE	Delta	W5WMMU/5	WA4UCE
K4GSU	WB8JBM/8	Great Lakes	WA8ZDT	W8EDU
WA2UOO	WB2OEU	Hudson	W1BGD/2	WA2SPL
K0GXR	K0KU	Midwest	WA0TKJ	K0GXR
K1ZND	WA1JUY	New England	K1VTM	W1ARR
W7RM	W7SFA	Northwestern	W7RM	W7FO
K6EBB	W6BIP	Pacific	WB6KBK	W6NUT
W4NQA	K4CG	Roanoke	WB4YOJ	K4CG
WA0CVS	WB5AXC	Rocky Mtn.	WA0QLH	WB5AXC
W4DQS	WB4QNX	Southeastern	W3ZBW/4	WA4EYV
W6MAR	WA6SFM	Southwestern	K6JAN	W6YRA
K5PFL	WN5EYG	West Gulf	WA5JMK	WB5DTX
VE7WJ	VE7UBC	Canadian	VE7WJ	VE1UNB

Four clubs rose within or into the Top 10 rankings this year, three of them never having appeared there before. The most spectacular rise was the Buffalo Area DX Club who took 9th after not having an entry last year. A no less spectacular jump was recorded by the Norwood Amateur Radio Club who nabbed 7th after placing 46th in 1971. The Wisconsin Valley Radio Association jumped nine spots, grabbing 10th this year. The other club that advanced in the Top 10 listings was the Northern California Contest Club who moved up one notch to 8th spot.

In contests, recognition is given to single and multi-operator stations on a regional basis such as sections or divisions. Following the same line of thought (and in addition to our regular listings) we have listed the top club in each call area this year. They are:

1 - Murphy's Marauders 2 - Buffalo Area DX Club 3 - Mason-Dixon Pirate RS 4 - Potomac Valley RC 5 - Texas DX Society 6 - West Valley ARC 7 - Radio Club of Tacoma 8 - Indian Hills RC 9 - Wisconsin Valley RA 0 - Minnesota Wireless Club

The concept of a regionalized format for club competition has been batted around these parts (and within the CAC) for some time. The CAC and Hq. would appreciate additional input from the field on this idea. Should the "by score" listings of the clubs be dropped and a "by score within call area" listing be instituted? Should the regionalized competition be dropped altogether? While you are writing, give your opinion on the idea of separating the SS weekends by one week - allowing a free weekend in the middle to repair antennas and household relations.

AFFILIATED CLUB SCORES

	Score	Entries	Phone Winner	CW Winner
Potomac Valley Radio Club (Va.)	7,810,895	123	W3GRF	K1LPL/3
Murphy's Marauders (Conn.)	6,300,752	95	K1VTM	K1ZND
Minnesota Wireless Association	2,587,265	40	WA0VKP	K0ORK
West Valley Amateur Radio Club (Calif.)	1,862,068	18	WB6VZI	W6HX
Radio Club of Tacoma (Wash.)	1,390,569	39	W7RM	W7RM
Boeing Employees Amateur Radio Soc. (Wash.)	1,283,638	54	WA7JBM	W7VMF
Norwood Amateur Radio Club (Mass.)	841,407	32	WA1EOT	WA1EOT
Northern California Contest Club	684,039	10		K6EBB
Buffalo Area DX Club (N.Y.)	522,122	11	WB2PGM	
Wisconsin Valley Radio Assoc.	507,945	17	W9RQM	W9RQM
Indian Hills Radio Club (Ohio)	449,229	9	WA8USP	W8AEB
128 Contest Club (Mass.)	412,919	9	W11XL	W1BPW
Texas DX Society	404,066	6	K5PFL	K5PFL
Saginaw Valley Amateur Radio Assoc. (Mich.)	396,104	22	K8MFO	K8MFO
Canton Amateur Radio Club (Ohio)	384,954	16	K8YQW	K8YQW
Conejo Valley Amateur Radio Club (Calif.)	360,585	5		
Radio Society of Greater Brooklyn	349,143	10	WA2QBC	
South Jersey Radio Assoc.	332,222	14	W2EA	W2PAU
West Park Radiops (Ohio)	293,330	5	WA8YWX	
Central Michigan Amateur Radio Club	278,116	14	W8TJQ	WB8BPY
Johnson County Radio Amateur Club (Kan.)	270,516	10	K0UYN	WB0EZQ
Hollywood Amateur Radio Club (Fla.)	240,930	11	WA2AFL/4	W4OZF
Massillon Amateur Radio Club (Ohio)	234,157	8	K8EKG	K8EKG
L.E.R.A. Amateur Radio Club (Calif.)	224,271	8	WA6GFY	W6HLP
Arapahoe Radio Club (Colo.)	221,731	3		
Dallas Amateur Radio Club (Tex.)	198,246	5		
Ozaukee Radio Club (Wisc.)	192,966	8	WB9BGJ	W9NYJ
Pasadena Radio Club (Calif.)	189,105	9	W6BVN	
Overlook Mtn. Amateur Radio Club (N.Y.)	185,358	5	WB2BXL	
Twin City DX Assoc. (Minn.)	156,305	4	W0NUH	
Mason-Dixon Pirate Radio Soc. (Del.)	155,744	9	WA3GSM	WA3GSM
Chicago Radio Traffic Assoc.	147,760	8	WA9BLP	W9HPG
ARINC Amateur Radio Club (Md.)	142,600	9	W3AWN	W3TOS
North Augusta Belverdere ARC (S.C.)	128,512	5		WA4PBS/4
Central Virginia Contest Club	96,844	7	W4QCW	K4JM
Garden State Amateur Radio Assoc. (N.J.)	92,918	7		WA2RYD
Utica Amateur Radio Club (N.Y.)	89,601	7	WA2EXZ	WA2EXZ
Colonie Central High School RC (N.Y.)	77,527	6		WA2TUJ
Larkfield Amateur Radio Club (N.Y.)	68,186	5	WA2DCP	
S. E. Virginia Wireless Assoc.	65,278	5	WB4OXD	
Arlington Amateur Radio Club (Tex.)	63,409	4	WA5SRK	
Parkway West Sr. Hi Ham RC (Mo.)	56,546	6		WB0DYU
Northwest Amateur Radio Club (Ill.)	55,466	3		
Tuscaloosa Amateur Radio Club (Ala.)	51,906	4	WB4SVH	
Douglas Aircraft Company ARC (Calif.)	43,198	6	WA6BFD	
Gloucester County ARC (N.J.)	24,460	4		
Muskegon Area Amateur Radio Council (Mich.)	17,926	4	W8QAO	
Spokane Radio Amateurs (Wash.)	15,069	4		K7BFL
Parma Radio Club (Ohio)	6750	4	WA8OYR	



K2AU, before and after (no, no, no. The before picture is on the left). Joe took the NLI section on cw with over 105K. I guess winning a section takes quite a bit out of a person.

rather interesting contact was with the Novice that indicated a precedence of B. — (W6DQX) Few operating hours due to XYL overheating. — (WB2GUL) All the sevens in Wyoming and Nevada must have gone to Washington. — (K8OQL) Very difficult to compete in Kentucky. My son, K4GSU, is much too tough for me. — (K4QW) I just can't understand the need for rushing from station to station without being sure that you were good copy. — (WA2IFE) When the brand new rig blew up prior to the SS, disgust was the order of the day. I pressed the Argonaut back up rig into service and, what do you know, EPT was right; you can't win the SS with one but you can have a lot of fun. — (WA6QQI) I remember when Idaho used to be a rare contest multiplier; but not any more. — (W7IUO) I had a lot more fun than I did sleep. — (WN8KOA) Where do they hide Alaska? — (WA1MYK) I decided to make this a completely QRPP operation. My maximum power input was five watts. Although my signal was not competitive with the higher-powered stations I did manage to work many sections. I even worked a couple of ZLs on the side. — (W9PNE) It was fun to operate simultaneously in the SS with OM W9LVH. The vast span between our scores resulted from the vast span between our skills plus off-time caring for 6 week old Jr. Op. number 1. — (WN9HGN) Not only did my 14-year-old neighbor more than double my score but I had an angry XYL all weekend because of a wedding anniversary that landed on the second day of the contest. — (WN4AVG) Almost gave up when the flu struck early in contest but K9LBQ's prescription of 500 mg. of Vitamin C every 50 contacts saved the effort. — (WA9TPV, opr. at W9YT) Entered this SS after 15 year absence. More fun than ever. — (W0HAW/6) If the guys knew I am a 16-year-old YL I probably would have done a little better. — (WN2JLM) Great Scott! Two Wyoming, three Vermont, six Utah, six Idaho and ZERO Mississippi — (W4UQ) Fifteen minutes after the contest ended my hot water heater gave up and spewed water all over the kitchen floor.

Glad it waited. — (WN6RXI) Great contest — but I wonder how many points K0DDA and I cost each other? — (K9DDA) I would like to see how my yester-year heroes would do today against the new crack operators. — (W9DOB) On Monday evening I was visited by a Market Research interviewer who

QSO LEADERS

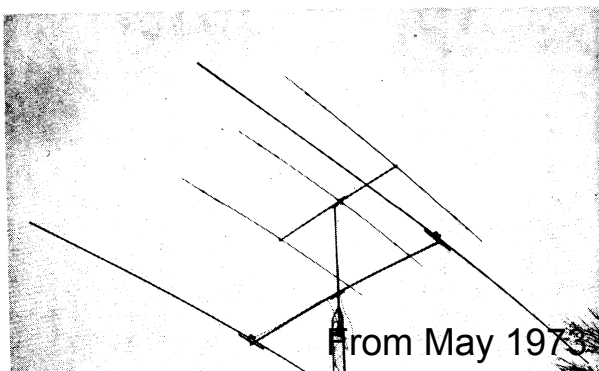
(Single Operator)

CW		PHONE	
W7RM	1117	W7RM	1609
W6MAR	1089	W9YT	1327
W6HX	1050	WA5JMK	1305
K6EBB	1038	WA8ZDT	1272
K1ZND	1010	K1VTM	1230
K1LPL/3	998	W5WUM/5	1223
W3IN	948	VE7WJ	1200
W9YT	944	WB6VZI	1194
WA0CVS	941	K6JAN	1165
K1VTM	922	WA0QLH	1154

QRP CHAMPS

(200 Watts or Less at all Times)

CW		PHONE	
WB0DLE	113,040	WB0DSP	122,850
WB5AOF	103,824	K7PXI	99,134
WB2RJJ	101,470	WB5AAU	97,412
WA0BWM	100,110	WA6BBV	97,056
WA2LCC	93,436	W9RQM	90,946
KH6HKM	91,542	WB2RJJ	88,500
WB5AAU	89,886	WB6OLD	87,912
W1FCC	87,381	WA2LCC	87,468
W2FVS	86,380	K0LUW	87,000
W8QHW	85,540	WB9CGL	85,824



The signal at multiop WB9IDS was helped considerably by this 40 meter beam at 40 feet and the TH-3 10 feet higher. Using low power WB9s IDS, EBP and JKF racked up a nice 126K showing on phone from Illinois and took the Central Division multiop leader spot at the same time.

One of the many MDC cw entries was WA3QDH shown here scratching for another QSO. Robb used Drake gear and a 14-AVQ during his cw effort. He also operated in the WA3GIN multi setup on phone.



interviewed me about my radio listening habits. She asked if I listened to the radio over the weekend! - (K4BAM/4) Wait 'till I get a better receiver, a bigger antenna, an amplifier. . . . - (WA1MHJ) A word of thanks is in order to the speed demons who QRSed for us slower fellows. - (WB2FKF) There must be something terribly masochistic about a person who spends hour after hour in a hard chair, hunched over a key, with all the filters in, the volume too loud and wearing those God awful phones. If so, why do I hate myself and when is the next SS? - (KØFRH) Again, the SS is the king of all contests. Great excitement, challenge and fun for all. - (W4YZC) Next year, high power for both contests. Maybe I'll raise my antenna higher also. This power/cost race is something that we need to consider terminating. - (W5QGZ) Of stations worked from K8IKO, 84% were using more than 200 watts, and I would suspect from the strength of the signals, that most of the A class stations were running 150-200 watts. The result was, from the torture-chamber between my headphones, a deluge of power; a deafening, brain-numbing torrent of kilowatt signals that represents the most exaggerated electronic overkill I have yet heard on amateur bands. - (K8IKO/8) Must be a record for the coldest shack - 36 degrees. My fingers froze to the bug. - (WA8BHR) Been a ham 20 years and this is the first contest I have ever entered. Really enjoyed it but wish I had more time to operate. - (K4FCZ) Got my cast off and pin taken out of fractured right thumb three days before cw contest and could move thumb just enough to send. - (WB4SVX) Finished putting beam on rooftop of apartment building 20 minutes before start of SS. Lots of time for checking it out. - (W2FVS) Most fun I've had since the Novice Roundup - (WB2ADW)

Spatter

The ARRL Sweepstakes certainly gives one a fuller understanding of just what the word "contest" means. That old familiar "itch," the stirring of the blood and that faraway look are just a few of the symptoms that are frequent visitors here whenever the word is mentioned. Guess I've really got the bug. - (WB4OGW) Expect to operate W7LR/7 multiop next year form Wyoming, phone and cw. - (W7LR) When I told the XYL about the fellow who gave me his number 1 with two minutes to go in the contest her answer was, "That sounds like the only sensible guy in the whole batch." - (W7FXQ) Most fun was operating from Quebec and feeling wanted. - (W3GRW/VE2) There ought to be a rule about operators with marbles in their mouths and no knowledge of phonetics. - (WB2GUB) My presumed "clean sweep" fell prey to a bookkeeping oversight! Thought I had Oregon tucked away early in the contest only to discover (after the SS was over) that it had eluded me! - (W4KFC) Had to rescue a squirrel who fell 25 feet down our chimney behind the fireplace damper during the phone SS. - (W1ECH) How about a mobile category so I can beat somebody - anybody. - (W4OZF/4) Got so excited on working my fourth Delaware in 15 years that I forgot his call. - (W4HOS) It didn't

CLEAN SWEEP CW

W1ECH	W4KFC	W6NUT
W3AU*	WA4KJR*	WA6NYV
K4CG*	WB4YOJ	W8DB
W4DM	W6MAR	W8OK
W1ICP (WA1PID, opr.)	K6QYB (K6OVJ, opr.)	
K6EBB (W6CUF, opr.)	W7RM (K7VPF, opr.)	

CLEAN SWEEP PHONE

K1DKX	W4NOA	WB6RKH
K1DQV/1	W4WSF	W7EXM
K1JHX	W3ZBW/4	W7GKF
K1VTM	WA4IVL	W6HX/7*
W1FLM	WB4BUT*	WA7FFU
WA1KBG	WB4GRN	WA7JBM
WA1PQA	WB4UYD	K8MFO
W1BGD/2	WB4YOJ	W8AEB
W2KGY*	K5PFL	W8OK
W2VDX*	W5WMU/5	W8OQH
WA2CLO	WA5JMK	WA8UQP
WB2OEU*	WA5LUM	WA8YWX
WB2PGM	WA5QXD*	WB8IAY
WB2RJJ	WA5RTG	WB8JBM/8*
WB2YQH	WA5RXT	K9IU*
K3WUW*	WA5YAS	W9ZTD
W3AZD	WA5ZNY	WA9BWy/9
W3BWZ*	WB5DXT*	WA9NPM
W3EZT	K6JAN	WB9GFC
W3GRM	K6SSN	KØGX R*
W3IN	W6BIP*	KØLUW
WA3LHG	W6DSQ	KØSGJ*
WA3QHI	W6NUT*	WØNUH
K4BNC	W6OKK*	WAØRBW
K4CG*	W6ONV	WAØVJF
K4FU	W6YRA*	WAØVKP
K4HPR	WA6TVC*	WBØDSP
K4LDR	WB6KBK	KH6IJ
K4ZA		VE6MP
W1ICP (WA1PID, opr.)	K6SVL (KØGJD, opr.)	
WA1KZE (WA1NRV, opr.)	W6UA (W6HOH, opr.)	
W2CXM (WA1LKK, opr.)	WA8ZDF (WA8RWU, opr.)	
K1LPL/3 (WA3IAQ, opr.)	W9YT (K9LBQ, opr.)	
W3GRF (K1ANV, opr.)	WAØQLH (WBØDJY, opr.)	
WA3HGV (WA3KZQ, opr.)	VE2UN (WA3HRV, opr.)	
W4ZCY (K3EST, opr.)	VE4RRC (VE4EA, opr.)	
K6BCE (WA6NNJ, opr.)	VE7WJ (VE7BDJ, opr.)	

*Multioperator

LED SECTIONS BOTH MODES

(Boldface = over 100K each mode)

VO1CA	W3ZBW/4	WA6NYV
W5QNY/VE3	WA4UCE*	W7RM
VE7WJ	WB4VJK*	W7UQ
W2CXM**	WB4YOJ	W9YT**
W2MO/2*	K5PFL	K0VVY*
WB2OEU*	W5WMU/5	WB0BCZ
K3WUW*	WB5AXC*	KL7AIZ*
K4CG*	WA6NGG	KZ5BB

*Multioperator

**Different call or operator each mode.

bother me that a couple of guys said "Hi Bob" while Dave (K1ZND) was at the mike - but it really jolted me when somebody called me and asked "Is that Dave?" (If the asker had been in Wyoming, I would gladly have given him any answer he liked!) - (W1ARR) Next year I'll make sure I don't have to babysit during the contest. - (W9CQD) I'll never operate Sweepstakes again. . . . well, not until next year. - (K3DVS) Seems like everybody in Virginia was operating SS. Toughest competition I've ever faced. - (WB4UOX) [He ended up seventh in VA with over 100K. - Ed.] Enjoyed it very much although one fellow in W4 land insisted there was no room for a DL in a U.S. SS contest. - (DL2AA/W1) Next year I have to remember to keep a dupe sheet during the contest, not after. - (WB2GUQ) Very fortunate that Murphy missed Newfoundland for this year's SS. Three weeks after SS-72 we obtained 100 mph winds and I lost my rotor. - (VO1CA) [That's all you lost?! - Ed.] Conditions were never like this when I was VE8BB. - (VE6MP) How about a separate category for people who live in N.Y.C. and have to use indoor dipoles inside steel and concrete buildings? My first SS was a madhouse but somehow enjoyable. - (WB2UFN) I like the stricter new competition rules even though I had to dupe the logs three times to get rid of all the dupes. - (WB4NFQ/4) Have been in SS contests since about 1938. It was a real pleasure this year to go multi-op with an 18-year-old ham who is a tremendously good operator and who produced a clean sweep "first" for my station. - (W6OKK) Found that "Radio Macaroni" worked well phonetically; it's easily recognizable yet different enough to attract attention. - (K7VFP, opr. at W7RM) Taking 5 hours off at one shot proved advantageous - fewer "cobwebs" to deal with. - (K1VTM) My rotor control box wouldn't indicate so a 150 watt spotlight and a mirror outside the window by the shack did the trick. I wonder what the neighbors thought? - (WB2RJJ) Worked WA2RZA and WA2RAZ in succession; both number 7 and both NYLI for a real double-take on the check sheet. - (W0BWJ) The toughest part was sorting out the log sheets afterwards (which is a small price to pay for enjoyment received). - (WB6DBO) Where I was, Murphy was. - (WB0CLY) I wonder how much time I lost listening to remarks about my call. - (W1FCC) SS gave me will power to take Advanced. Heard a KH6 and KL7 but in the Advanced band. - (WA3QLG) [Now that's what I call real incentive licensing. - Ed.] If I flunk my First Phone it's your fault for not letting me get any sleep this weekend. - (WB4HUS) Never have 309 QSOs been so difficult. - (WA3QIA/3) I sure can't forget when the SS is. That is the weekend my beam always falls down. - (WB2JSJ) Ninety mph winds slamming into the shack on top of Raindown Ridge caused more QRM problems than did the entire SS contest. - (K6BCE) Football on TV makes it hard for us contesters. - (WA5FII) Old finals never die - they just fade away. - (WA1LAI) I am getting awfully fed-up with guys who don't check dupe

CONTEST PERIODS

1973

Starts		Ends
Saturday, Nov. 10		Monday, Nov. 12
2100 GMT	PHONE	0300 GMT
Saturday, Nov. 17		Monday, Nov. 19
2100 GMT	CW	0300 GMT

sheets before calling. I assume they keep dupe sheets. - (W4NQA) My biggest problem in the contest was after 250 QSOs I forgot what section I was in and could do nothing but mumble into the mike until I recalled it. - (WB6KMW) Needed only VE3 to make sweep with almost 4 hours to go in contest. Guess who didn't show? Must have missed them in the QRM from the VE8s. - (WA6NYV) As you might know it - ice, rain and finally snow kept the beam in the factory carton. - (WB8IDK/9) Hooray for the VE stations. Never heard so many VE4-6s. - (WA0WEZ) Weekend was a disaster. Interfered with college police on 40 phone so couldn't use linear or beam. Fifteen meter antenna fell down and my body died at 5 o'clock Sunday afternoon. - (WA1LXX, opr. at W2CXM) The one effort which brought the club together. - (WA4UCE) Lots of fun, lots of work when single operator - best of contests! - (W6PYK) Did fair with my rain gutter antenna. - (WB4WLK/4) Found that one cannot expect good score if one goes to Saturday night party. - (WB9APC) QRM on 80 meters Saturday night was so thick you couldn't cut it with a knife (or a 180 watt PEP rig for that matter). - (WA1MYK)

NOVICE WINNERS

(Top 10)

WN5DLY60,306
WN6ION29,700
WN3QNT25,137
WN4TVU24,750
WN5GIV24,009
WN0GTJ22,412
WN7TDZ21,280
WN6GGP16,848
WN4AJL16,640
WN6RXI16,184

Other Winners - WN2SXO, WN2FTQ, WN2FHX, WN7UQV, WN8IOT, WN8KEO, WN9KDY, WN9IHH, WN9JIC, WN0GRJ.

THIRTY-NINTH SWEEPSTAKES CONTEST

Scores are grouped by call area. Sections, within call areas, are broken down by power category. Example of listings: VO1AW 7880-99-40-6 or final score of 7880, number of QSOs 99, number of sections 40, total operating time of 6 hours. An asterisk denotes a Hq. staff member, ineligible for an award. Multi-operator stations are grouped in order of score following single-operator station listings in each section tabulation.

CW SCORES

VE

Table listing CW scores for various VE call signs. Includes Maritime (VOIAW, VOICA), Quebec (VE2AQP, VE2BYR), Ontario (WSQNY/VE3, VE3OT, VE3AWE, etc.), Manitoba (VE4SC), Saskatchewan (VE5XC), Alberta (VE6AXH, VE6ATT), British Columbia (VE7WJ, VE7TT, etc.), U.S.A. (K1ZND*, K1VMT, etc.), Connecticut (K1THQ, K1WFL, etc.), New Hampshire (W1BPW, W1TML/1, etc.), Rhode Island (K1JYN), Vermont (W1MUG/1, K2HVN/1, etc.), and Western Massachusetts (W1PUO).

Table listing CW scores for Eastern Massachusetts (W1NPKS, K1MUJ/1, etc.), Eastern New Jersey (W2SZ, W2AZO, W2BXL, etc.), and Southern New Jersey (W2BQF, W2A2WLN, etc.).

Table listing CW scores for Maine (W1FCC, W1FNW, etc.), Connecticut (K1GAX, W1KVI, etc.), New Hampshire (W1BPW, W1TML/1, etc.), Rhode Island (K1JYN), Vermont (W1MUG/1, K2HVN/1, etc.), and Western Massachusetts (W1PUO).

Table listing CW scores for New Hampshire (W1BPW, W1TML/1, etc.), Rhode Island (K1JYN), Vermont (W1MUG/1, K2HVN/1, etc.), and Western Massachusetts (W1PUO).

Table listing CW scores for Rhode Island (K1JYN), Vermont (W1MUG/1, K2HVN/1, etc.), and Western Massachusetts (W1PUO).

Table listing CW scores for 200 Watts or Less (W1DKW, W1NKH, etc.), Eastern New Jersey (W2SZ, W2AZO, etc.), and Southern New Jersey (W2BQF, W2A2WLN, etc.).

Table listing CW scores for 200 Watts or Less (W1BGD/2, W2ATUJ, etc.), N.Y.C.-L.I. (K2AU, W2ACZG, etc.), and Western New York (W2FVS, W2LYB, etc.).

Table listing CW scores for N.Y.C.-L.I. (K2AU, W2ACZG, etc.), Western New York (W2FVS, W2LYB, etc.), and Delaware (W2RJJ, W2PWS, etc.).

Table listing CW scores for Delaware (W2RJJ, W2PWS, etc.), and Western Massachusetts (W1PUO).

Table listing CW scores for Delaware (W2RJJ, W2PWS, etc.), and Western Massachusetts (W1PUO).

Table listing CW scores for 200 Watts or Less (W2AZO, W2BXL, etc.), Southern New Jersey (W2BQF, W2A2WLN, etc.), and Delaware (W2RJJ, W2PWS, etc.).

Table listing CW scores for Southern New Jersey (W2BQF, W2A2WLN, etc.), Delaware (W2RJJ, W2PWS, etc.), and Western Massachusetts (W1PUO).

Table listing CW scores for Delaware (W2RJJ, W2PWS, etc.), and Western Massachusetts (W1PUO).

Table listing CW scores for Delaware (W2RJJ, W2PWS, etc.), and Western Massachusetts (W1PUO).

Table listing CW scores for Delaware (W2RJJ, W2PWS, etc.), and Western Massachusetts (W1PUO).

WN3TFP 1152- 36-16- 9	WA3RJS 9065- 132-35- 8	K4FOB 63,808- 504-64-24	W4ZSH (+K4GFH) 8856- 108-41- 8
WN3PXH 624- 28-12-11	WA3GRO 8320- 104-40-12	K4EZB 26,880- 240-56-11	Western Florida
WA3HD 112- 8- 7- 2	K3BNS 3796- 73-26- 6	WN4BIB 2697- 50-31-17	W3ZBW/4 30,840- 259-60- 9
Eastern Pennsylvania			
WA3KOZ 64,328- 473-68-21	WN3QGG (+WN3QGE) 19,380- 190-51-20	WB4JDM 1320- 33-20- 9	200 Watts or Less
W3ADE 53,676- 378-71-20	WN3TLI (+WN3SOR) 2800- 50-28- 3	WN4AVG 1280- 38-20-14	WA4SSB 15,756- 152-52- 8
K3DPO 40,176- 324-62-11	WN3TDZ (+WB9HGJ) 2430- 45-27-21	South Carolina	
W3HMR 15,000- 150-50-11		K4FJC 75,168- 522-72-20	200 Watts or Less
K3OIO 14,400- 150-48- 6		WA4PBS/4 45,880- 372-62-24	WA4LFX 22,892- 194-59-14
W3FTG 12,342- 121-51- 4		WA4LBO/4 19,936- 178-56-19	K4FKJ 17,622- 190-47-10
K3DVS 3968- 62-32- 6		WB4RKN 10,560- 120-44- 6	W4PED 10,384- 118-44- 6
W3ABT (WB2FWW, opr.) 340- 17-10- 1		WN4VZG 8800- 101-44-17	WB4IUX 7960- 100-40- 5
W3DQG (+WA3MQF) 98,696- 676-73-24		K4QF 7922- 117-34-10	WB4VJK (WA2FFY WB2JDB WA4WDH WB4s NXY RAD) 30,380- 310-49-24
200 Watts or Less			
K3MNT 76,568- 563-68-15		Tennessee	
WA3NOX 73,712- 542-68-22		K4PUZ 129,788- 920-71-24	K4DCD 101,388- 714-71-24
W3ARK 51,200- 400-64-16		WA4UCE (K4SXK WB4FIC) 115,872- 816-71-24	
K3DZB 40,170- 309-65-19			
WA3SQB 32,086- 263-61-17			
K3CSG (WA3RGN, opr.) 29,312- 229-64-16			
WA3ROB 12,400- 204-31-14			
WA3PKU 11,100- 150-37-11			
WA3QWP 8362- 113-37-10			
WA3ABN 8136- 113-36-13			
WA3NVZ 4290- 65-33-13			
W3AQLG 4032- 84-24- 7			
K3DCE 2728- 62-22- 3			
WA3MVP 1159- 33-19- 9			
WA3LTC 1134- 27-21- 4			
WN3RHX 210- 19- 7- 4			
Maryland-D.C.			
K1LPL/3 141,716- 998-71-24			
W3IN 132,650- 948-70-24			
W3GN 114,984- 801-72-24			
W3GRF 106,216- 748-71-19			
W3KMW (K2QBW, opr.) 84,140- 601-70-14			
W3AZD (WA3MJF, opr.) 83,520- 580-72-22			
K3NPV 81,558- 592-69-15			
K3JYZ 80,534- 601-67-21			
W3GRM 78,218- 529-74-15			
W3TMZ 72,964- 493-74-15			
K3ANA 72,352- 532-68-20			
W3MFI 70,794- 513-69-20			
W3PZW 69,296- 488-71-17			
WA3LHG 68,608- 512-67-21			
W3CSZ 61,203- 445-69-15			
K3CKT 57,528- 424-68-15			
WA3AMH/3 54,203- 405-67-16			
W3ANUH/3 53,600- 400-67-14			
W3GCT 49,302- 457-54-21			
W3FA 41,728- 326-64- 9			
W3EKT 34,515- 266-65-12			
W3BWZ 31,440- 262-60-12			
W3KE 24,380- 230-53-12			
W3EQQ 24,304- 248-49-12			
W3HVM 21,112- 182-58- 8			
W3AFM 20,800- 200-52- 8			
W3DBT 18,912- 197-48- 3			
WA3AFQ 18,585- 158-59- 6			
W3EZT 13,870- 183-38- 3			
VE1BU/W3 (K1ANV, opr.) 13,400- 134-50- 5			
W3KA 11,520- 144-40-12			
W3AWN 10,716- 114-47-12			
W3ML 9000- 100-45- 6			
W3HH 5100- 75-34- 5			
K2SSX/3 800- 25-16- 1			
W4SON/3 704- 22-16- 1			
W3RIL 2- 1- 1- 1			
K3WUW (multiop) 100,196- 679-74-21			
WA3EPT (WB2s Pts UZU K3s CUW GJD) 89,424- 622-72-23			
W3AU (+W3ZKH) 69,150- 461-75-18			
W3KWB (WA3LIO WA8FAE) 42,280- 302-70-12			
200 Watts or Less			
WA3QIA/3 70,148- 494-71-21			
W3TOS 49,476- 399-62-20			
W3ABC 44,800- 350-64-18			
W3ILC 28,396- 230-62- 2			
W3TN 16,016- 154-52-13			
K3RFB 15,198- 149-51-16			
WA3QDH 12,887- 134-49- 6			
WA9KWS/3 11,970- 133-45-15			
W4FJN/3 31,626- 251-63- 9			
WN3QNT 25,137- 229-57-24			
WA3PWY 22,848- 204-56-12			
WA3QJR 3248- 56-29- 5			
WN3RTO 144- 11- 8- 9			
WN 3 S L Q (+ W A 3 O X G WN 3 S X B) 10,752- 134-42-20			
4			
Alabama			
K4ZGB 14,006- 149-47-10			
200 Watts or Less			
WB4SVX 57,040- 460-62-16			
WB4EOW 36,416- 286-64-17			
W4RAL 29,880- 249-59-17			
WB4SVH 14,872- 143-52- 6			
WN4UNM 1886- 45-23- 8			
Eastern Florida			
W4DQS 112,184- 758-74-23			
W4OZF 107,565- 766-71-19			
WB4AEX 100,252- 708-71-24			
W4AOGW 71,781- 506-71-22			
WA2AFL/4 21,640- 185-58- 7			
WB4RSV 20,574- 193-54-10			
K4FAC 12,402- 117-53- 6			
W2WOE/4 7884- 110-36- 4			
W4HOS 7480- 85-44- 6			
W4DXL 2296- 41-28- 5			
WB4QNX (K4s CEY IDJ IQJ W4ZTB WB4s ORS TCL) 60,192- 458-66-24			
200 Watts or Less			
K4FCZ 22,272- 192-58-13			
WN4AJL 16,640- 160-52-16			
K9MAF/4 1600- 40-40- 4			
WN4VYU 3250- 33-25-10			
WB4NTH 200- 11-10- 5			
Georgia			
K4BAI 111,617- 765-73-24			
K4EZ 29,264- 236-62-10			
WB4KVE 4620- 77-30- 2			
WB4MWC (+WB4s UIE UIH) 38,003- 315-61-24			
200 Watts or Less			
W4ZYQ 47,158- 324-73-18			
K4BAM/4 36,480- 305-60-20			
WN4TVU 24,750- 225-55-24			
W4GXW 23,655- 209-57-14			
WN4UCC 5180- 71-37- 6			
Kentucky			
K4GSU 132,568- 908-73-24			
K4QW 72,072- 504-72-17			
K4HFD 13,632- 145-48- 9			
W4RIW 6272- 100-32-14			
200 Watts or Less			
WB4NFQ/4 (WB4HUS, opr.) 69,414- 503-69-24			
K4FU 57,456- 401-72-15			
North Carolina			
WB4YOJ 123,450- 825-75-24			
WA4FFW 77,694- 563-69-19			
K4CAX 61,035- 470-65-15			
200 Watts or Less			
K4EQA 71- 602-71-24			
W4NQA 131,327- 900-73-23			
W4KFC 114,300- 763-75-17			
W4ZCY (WA3AQ, opr.) 101,601- 717-71-23			
K4LDR 98,112- 672-73-23			
WB4EAE 94,896- 660-72-23			
W4DM 90,675- 605-75-21			
K4DTD 88,264- 649-68-16			
W4UQ 85,680- 596-72-21			
W4WSF 80,512- 544-74-22			
W8VDA/4 66,000- 500-66-17			
K4JMA 65,552- 482-68-12			
W4ZM 61,344- 432-71-15			
W4NH 55,968- 424-66-15			
W4EZ 51,264- 356-72-11			
W4GF 41,844- 317-66-12			
W4WBC 39,760- 284-70-13			
K4FCB 38,052- 302-63-16			
W4NW 32,175- 295-55- 7			
K4DSD 30,090- 255-59-12			
K4ZA 29,540- 211-70-16			
WB4RDV 24,360- 210-58-13			
K6ETM/4 23,124- 246-47-15			
K0CMT/4 21,670- 198-55-15			
K4GMH 21,252- 253-42-10			
W4UJP 10,500- 126-42- 5			
WB4TBO 9116- 106-43- 9			
K4JYM 3996- 56-36- 3			
K4CYG (multiop) 106,200- 708-75-24			
WA4KJR (multiop) 94,200- 634-75-22			
200 Watts or Less			
WB4HRA 77,980- 557-70- 9			
W4HIR 72,896- 536-68-24			
W4ZCZ 72,432- 503-72-16			
K4I4F 64,752- 457-71-20			
WB4SGV 63,700- 455-70-15			
K4KA 42,624- 334-64-16			
W4TKR 37,204- 262-71-12			
WB4SWE 31,920- 266-60-13			
W4KXV 29,116- 251-58- 9			
K3CWS/4 17,437- 165-53- 9			
K4FTO 16,740- 156-54-10			
WA4HQW 15,300- 150-51- 8			
K4DSZ 14,006- 150-47- 5			
K4ZEL 14,000- 200-35-13			
W4GCL 12,426- 109-57- 9			
WB4URW 11,466- 117-49-15			
W4NM 10,600- 100-53- 9			
WB4FDT 7600- 100-38- 3			
K4EJG 3937- 65-31-13			
K4DHB 504- 18-14- 5			
WB4WLK/4 308- 14-11- 4			
K4GFH 208- 13- 8- 2			
W4ZRJ 160- 10- 8- 9			
W5WUJ 131,838- 912-73-24			
W5RXTX 80,937- 589-69-18			
W5OB 56,100- 413-68-17			
200 Watts or Less			
W5WG 32,565- 252-65-21			
W5SFRQ 23,760- 201-16-60			
W5SCMX 6972- 83-42- 3			
WN4WXF/5 385- 21-11-14			
Mississippi			
200 Watts or Less			
W5SFM 14,758- 157-47-20			
New Mexico			
W5OJH 126,490- 912-70-24			
W5SBHN 88,324- 622-71-22			
W5SAXC (WA5s DUH MHR WB5s CKI CXB) 24,396- 214-57-15			
200 Watts or Less			
W5SICL 56,700- 405-70-20			
W5NDK/5 4125- 63-33-11			
WA5MHR 960- 30-16- 2			
Northern Texas			
W5MYA 97,852- 726-68-22			
WA5JMK 63,376- 466-68- 8			
W5SUCT 47,168- 354-67-10			
W5OGZ 45,750- 375-61- 9			
200 Watts or Less			
WBSAOF 103,824- 721-72-23			
WBSSEE 45,440- 355-64- 9			
W5RYA 39,960- 335-60-24			
W5BSNG 37,524- 354-53-17			
WA2ITR/5 30,683- 254-61-19			
K5PXX 20,216- 181-56-17			
W5ONL 9328- 106-44- 3			
W5SSD 8595- 96-45-20			
W5SFBW 4389- 68-33-12			
W5SSRK 1886- 41-23- 9			
WBSAAR 672- 21-16- 2			
W5SHTT 18- 3- 3- 1			
Oklahoma			
WBSSEE 31,136- 279-56-10			
W5SZWW 30,326- 257-59-10			
W5LW 20,020- 182-55- 8			
K5OCX 800- 25-16- 1			
200 Watts or Less			
W5TID 1320- 33-20- 3			
Southern Texas			
K5PFL 133,644- 903-74-24			
WA3GBU/5 116,369- 821-71-19			
W5LJT 32,500- 250-65- 8			
W5SFFN 14,000- 140-50-12			
W5SLES 13,650- 163-42- 3			
200 Watts or Less			
WBSAAU 89,886- 636-71-23			
WNSDLY 60,306- 438-69-24			
WA9CWV/5 49,840- 357-70-23			
W5RJP 39,955- 329-61-20			

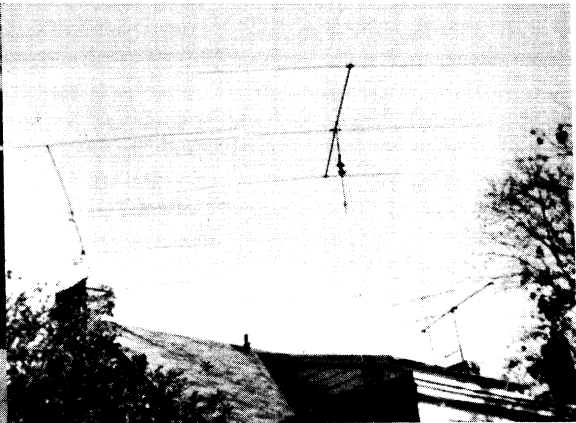
WBSFMA 8685- 98-45-10	WA6HRS 34,000- 250-68-17	200 Watts or Less	WA8ZDT 84,870- 615-69- 9
WSSBX 7812- 63-62- 4	W6GWQ 29,696- 232-64-14	K7CPC 60,032- 450-67-23	W8DQL 73,060- 565-65-12
WSRYT 4773- 65-37- 7	WA6DKF 3024- 56-27- 1	K2UAR/7 58,004- 429-68-24	W8OOH 69,509- 491-71-21
WNSEYG (+WNSs HSF HZE) 18,408- 184-52-24		Oregon	W8BJYX 26,962- 221-61-11
WNSGZG (+WNSHUC) 3335- 64-29-		W7WW 88,776- 617-72-18	W8GIF 12,320- 140-44-14
Canal Zone		WA7KXN 14,352- 138-52-13	W8HAN 7474- 101-37-16
200 Watts or Less		200 Watts or Less	W8IZ 7124- 137-26- 6
KZ5BB 38,280- 290-66-10		WA7MOX 46,632- 348-67-23	WA8KME 4060- 70-29- 5
6		WA7EEH 22,550- 205-56-16	W8TWJ 1776- 37-24- 2
East Bay		WN77DZ 21,280- 195-56-23	W8WM (WA8s GGN TON YOQ YZC ZFM WB8s BYC JAJ) 81,340- 590-70-24
WA6NGG 98,000- 700-70-19		WN7RNO 5436- 79-36- 6	200 Watts or Less
WB6BBC/6		K7OOC 3840- 61-32- 9	WB8BPY 76,164- 581-66-23
49,824- 346-72-21		Utah	W8TJQ 70,883- 486-73-21
W6RQZ 38,304- 304-63-		W7OAD (W7MWR, opr.) 101,814- 717-71-20	K9EAM/8 (WA9MCC, opr.) 61,250- 438-70-23
200 Watts or Less		200 Watts or Less	W8TZZ 49,764- 380-66-23
W6MSB 33,475- 260-65-21		WA7SVE 46,200- 352-66-24	W8BCKW 37,440- 360-52-18
WN6ION 29,700- 225-66-18		Washington	W8MKR 36,162- 287-63-15
K6LRN 18,618- 161-58-11		W7RM (K7VFP, opr.) 167,325-1117-75-24	W8WDM 35,264- 304-58-17
K6VNV 11,210- 95-59- 6		K7JCA 108,000- 760-72-24	W8HUI 34,720- 281-62-16
Los Angeles		W7VMF 93,294- 657-71-22	W8BGUD 33,600- 300-56-14
W6HX (WB6OLD, opr.) 155,104-1050-74-24		WA7GWL 89,064- 621-72-20	W8HSA 34,528- 219-56-13
K6QYB (K6QVJ, opr.) 132,075- 885-75-24		W7YTN 77,211- 562-69-23	W8BYT 22,686- 199-57- 9
W6DOX 106,632- 741-72-21		WA7OBL 63,449- 475-67-23	W8BXY 21,147- 201-53-13
WB6VZI 103,320- 741-70-18		W7UBA 59,904- 471-64-15	W8BHR 20,790- 165-63-23
K6RU 100,181- 706-71-20		WA7JCB 54,186- 411-66-20	W8PVI 17,028- 198-43-12
W6VPZ (W6LYY, opr.) 89,880- 642-70-20		W7JEG 50,456- 374-68-21	W8OM 16,320- 160-51- 5
W6YRA (WA7DAC, opr.) 86,800- 622-70-17		K3RIW/7 49,312- 368-67-24	W8WVU 15,705- 175-45- 5
K6VNX 78,668- 555-71-19		W7BUN 41,202- 327-63-18	W8BGCUC 14,734- 139-53-10
W9LVT/6 77,630- 557-70-14		WA7IVO/7	W8EGI 13,160- 140-47- 8
K6MP 67,592- 498-68-12		38,068- 307-62-13	W8BIMI 13,104- 126-52- 8
W6OEO 50,830- 391-65-22		WA7JBM 37,980- 321-60-12	W8SZT 12,720- 106-60-17
WA6DPO 37,170- 295-63-10		W7EXM 35,258- 290-61-11	W8N1OT 11,886- 147-42-18
WA6KZI 22,880- 208-55- 8		K7NWS (W7EA, opr.) 28,500- 241-60-16	W8BHI 11,500- 125-46-12
WA6MMQ 21,546- 189-57-17		K7MOK 26,785- 246-55-16	K8HJU 10,922- 127-43-11
W6DGH 15,850- 159-50- 4		K7GGD 22,220- 202-55-13	W8BWB 9696- 11-43-11
WA6GGK 13,780- 130-53-16		W7FXQ 14,651- 153-49-17	W8LJY 9430- 116-41-17
W6PFE 2000- 40-25- 4		K7ONB 8241- 101-41- 7	W8IUP 9116- 107-43- 9
W6QIL 576- 18-16- 2		W7IXO 4100- 50-41- 7	W8RXL 8532- 79-54-12
WA6SFM (WA6DHM WB6s CIA JJE) 56,892- 431-66-21		WA7TLK 2232- 49-24- 6	W8LZA 7896- 94-42-14
200 Watts or Less		W7HLP 1920- 40-24-11	W8KRK 6272- 56-56-11
WA6TXE 35,658- 283-63-17		K7BBO 1360- 34-20- 6	W8KTR 5800- 73-40-10
WB6KXC 28,884- 249-58-19		K7UWT 98- 7- 7- 1	W8BIVV 3956- 62-32-18
WB6OYN 28,352- 225-64-20		W7OS 60- 10- 3- 2	W8MJOY 3584- 65-28-10
WB6KPN 18,096- 174-52- 6		W7SFA (VE7ZZ WA7MEO) 131,619- 907-73-24	W8KZM 3392- 53-32- 5
WA6PYS 18,044- 175-52-11		200 Watts or Less	W8MSK 3000- 60-25- 4
W6JPH 10,350- 115-45- 4		K7HBN 55,610- 415-67-19	W8BKFV 2900- 51-29- 6
WB6RUN 9225- 116-45-22		W7WMY 46,784- 345-68-17	W8BIGU 2068- 47-22- 6
WN6GRFX 9090- 101-45-12		W7GYF 32,384- 253-64- 8	W8KPK 1380- 35-20- 5
WN6OYD 8- 2- 2- 1		WA7FHG 25,200- 226-56-18	W8BDSG 1180- 30-20- 4
Orange		WA7BSQ 13,160- 140-47-13	W8KIN 950- 25-19- 2
WA6JQX 67,932- 502-68-20		K7BFL 9585- 109-45- 8	W8BAYW 594- 27-11- 5
WA6HWR (+W6OUU) 42,346- 342-62-12		W7SF 6552- 85-39- 5	WA8OJI 560- 20-14- 6
200 Watts or Less		WA7QAT 6112- 96-32-15	WA8USU 390- 20-10- 1
WA6NGO 56,700- 406-70-27		WA7NOH 5400- 75-36- 6	W8NMIJ 121- 9- 7- 3
K6HRT 21,670- 197-55-17		WA7IBL 4890- 83-30- 9	WA8LAY 120- 10- 6- 1
WB6FNI 12,584- 143-44- 9		WA7MIX 4556- 67-34- 5	W8NVD 85- 9- 5- 3
WA6DBX 7476- 89-42- 8		WA7RWK 3712- 64-29-12	Ohio
W6HAW/6 6216- 74-42-14		K7RSB 3540- 59-30-10	W8EDU (WA3BGE, opr.) 126,288- 878-72-24
WA6BFD 4290- 65-33-12		W7FSF 2900- 50-29- 5	W8AEB 92,158- 649-71-21
Santa Barbara		K7EFB 2544- 53-24- 8	W8LKV/8 75,828- 534-71-23
K6QPH 99,864- 684-73-23		K7GZO 1470- 36-21-14	WA8LVT 74,408- 524-71-15
W6GEB 67,095- 473-71-14		WN7UQV 800- 31-16-18	K8RMK/8 61,360- 474-65-12
W6UA 46,620- 333-70-10		W7BCS 484- 22-11- 5	W8VYU 57,120- 420-68-15
K6BCE 31,416- 281-56- 4		WN7TMD 432- 18-12- 5	W8BYWX (W8IDM, opr.) 53,406- 387-69-19
W6HYK 1472- 32-23- 4		WN7SWS 288- 13-12- 5	K8HBN 52,290- 374-70-13
200 Watts or Less		WN7TOU 240- 12-10- 7	W8BVOI 42,510- 327-65-16
WA6DEI 8160- 102-40- 4		WN7TOT 50- 5- 5- 5	W8UPH 40,020- 345-58-14
W6MQF 6080- 76-40- 4		WA7NUY 40- 5- 4- 3	WA8LWH 24,804- 234-53-12
WN6NQV (+W6TPO) 1035- 36-15-13		WN7TRI (+WN7TOY) 1449- 32-23-24	W8MH 13,440- 140-48-11
Santa Clara Valley		Wyoming	W8OK 11,250- 75-75-15
K6EBB (W6CUF, opr.) 155,250-1038-75-24		W7HRM 35,400- 300-59-14	W8KXV 7093- 88-41- 6
WA6PGB 110,449- 762-73-22		Alaska	W8BIB/8 (WB8s DQP IRL JJA JOZ JPA WN8s LSN MQC MQD) 81,600- 600-68-22
K6QEZ (WA6AMW, opr.) 90,958- 625-73-22		KL7HNN 17,214- 154-57-15	W8BHDR (+W8IML WA8VGG) 70,026- 532-66-20
W6OKK 57,652- 406-71-14		KL7GDO 6279- 81-39- 3	200 Watts or Less
WB6KSZ 41,706- 331-63-21		KL7AIZ (WB4s ARV LEK WN91QA Bill Shoop) 18,126- 171-53-10	W8OHW 85,540- 658-65-24
200 Watts or Less		200 Watts or Less	K8EK 67,980- 517-66-17
WA6DEI 8160- 102-40- 4		KL7HFN 21,730- 205-53-24	W8OYI 66,430- 455-73-17
W6MQF 6080- 76-40- 4		8	K8YOW 64,655- 483-67-22
WN6NQV (+W6TPO) 1035- 36-15-13		Michigan	W8WEM 58,548- 431-68-20
WA6DEI 8160- 102-40- 4		K8MFO 126,022- 852-74-23	K8RMN 53,568- 420-64-24
W6MQF 6080- 76-40- 4			
WN6NQV (+W6TPO) 1035- 36-15-13			
Santa Clara Valley			
K6EBB (W6CUF, opr.) 155,250-1038-75-24			
WA6PGB 110,449- 762-73-22			
K6QEZ (WA6AMW, opr.) 90,958- 625-73-22			
W6OKK 57,652- 406-71-14			
WB6KSZ 41,706- 331-63-21			

WIFBY* 109,296-759-72-24
 WAIKID 103,390-742-70-24
 KIJHX 92,700-618-75-11
 WIGOO 87,906-637-69-24
 KIGUD 80,364-544-74-18
 WAIKOC 72,036-526-69-23
 WAIPOA 68,250-460-75-20
 WAILVW 62,920-486-65-18
 WIGNC* 62,660-482-65-18
 WAINES 60,769-454-67-12
 WISC 57,816-438-66-8
 WIRML 33,664-264-64-16
 WIRZG/1 33,356-270-62-16
 KIASJ 30,396-299-51-7
 WIBIH 29,600-200-74-9
 KIKTB 12,750-125-51-6
 WIDO 11,800-100-59-7
 WAIKRAV (WAIMOW, opr.)
 10,296-198-26-2
 WIAW (K2DDK, opr.)*
 6000-100-30-6
 WIDEP 4416-69-32-8
 WIARR (+K1ZND)
 166,648-1126-74-24
 WAIGBA (+W1ADWF)
 114,120-793-72-24
 WAINRG (+K1GTK)
 78,739-555-71-22
200 Watts or Less
 WAINTR 66,172-466-71-13
 WIECH 59,904-418-72-16
 WAINLD 55,836-425-66-18
 WAIPIHF (WB2CHO, opr.)
 26,790-238-57-14
 WAIFCM* 2014-53-19-3
 WAINKZ 1056-33-16-3
 WA3JLU/1 572-26-11-1
 KIMUJ/1 (K1DNW WAIHYN
 WN1QJQ)
 36,208-292-62-14
 KIRLU (+WAIKOJ)
 6776-77-44-8
Eastern Massachusetts
 WAIRBR 132,830-898-74-24
 WAIKZE (WAINRV, opr.)
 125,925-848-75-24
 KIOME 112,347-772-73-21
 WAILOT 103,660-710-73-24
 KICPI/1 103,304-698-74-
 WB2YEW/1
 102,054-699-73-24
 WAIION 83,950-576-73-14
 WIHWM 76,942-529-73-23
 WAIOLV 53,632-419-64-22
 WAIOMM 52,164-378-69-17
 WAIICV/1 49,770-398-63-23
 WIAX 21,000-150-70-5
 DL2AA/W1
 20,488-197-52-6
 KH6YI/W1
 16,430-155-53-22
 WAIMCY 16,352-146-56-5
 WIPLJ 12,600-140-45-14
 WAIMSK 8250-125-33-6
 WAINRV (WAIKZE, opr.)
 1848-42-22-1
 WAINDM 1296-36-18-2
 WAIMHJ (+WNIQOX)
 61,380-465-66-19
 WAIKSF (+K1IIPB)
 21,000-210-50-15
200 Watts or Less
 WIFCF 82,786-585-71-24
 WAIKBG 62,250-415-75-21
 WIMX (WAIKMO, opr.)
 50,180-387-65-24
 WAIPOM 32,880-276-60-15
 WAIQYM 32,091-282-57-16
 WAIOML/1
 26,042-227-54-19
 25,134-214-59-11
 WAIPIK 23,280-245-48-20
 WAIKAG 19,950-200-50-13
 WAIPAZ 16,591-178-47-17
 WAIITZ 12,420-135-46-17
 WIGJX 10,336-152-34-17
 KICHY 8624-99-44-9
 WAILAI 6426-96-34-10
 WAINKI 6396-78-41-15
 KIHRY 4592-82-28-9
 WAIHEB 3312-72-23-3
 WAIIEQU 1428-42-17-5
 WAIIFNM 1116-31-18-3

WAINRT 432-18-12-
 WIKBN (WAlS EUV MEH
 WB2JSS)
 39,329-295-67-20
 WIAF (WB2EPO WA3GQJ
 WA8NRO)
 13,833-131-53-6
Maine
 WA9ETL/1
 68,474-522-67-22
 KIGAX 42,000-300-70-10
200 Watts or Less
 KIZIT 2950-59-25-10
New Hampshire
 WIIXL 82,800-600-69-18
 WFTML/1 72,996-539-68-12
 WIFZ 13,534-101-67-8
 WIOQG/1 3173-84-19-7
 KICJSJ/1 (+WNIIRDA)
 104,784-708-74-17
200 Watts or Less
 WIDXB 1720-43-20-2
Rhode Island
 WAIMQO 103,149-709-73-23
 WIFB'F 36,720-270-68-13
 KIHMO/1 24,226-207-59-15
Vermont
 K1DOV/1 164,775-1100-75-24
 W1DC/1 (K1TWF WIZIW
 WAlS EIH HRG OIX)
 87,768-615-72-24
200 Watts or Less
 KIIUS 8342-97-43-17
Western Massachusetts
 K1DKX 61,350-409-75-19
 WIPUO (WAI1BXO, opr.)
 33,152-300-56-7
 K1KNQ 12,036-119-51-3
200 Watts or Less
 WAINHZ 38,360-274-70-9
 WAIABW/1
 34,048-304-56-9
2
Eastern New York
 W1BGD/2 166,575-1112-75-24
 WA2CLQ 160,200-1073-75-24
 WB2BXL 61,320-420-73-19
 W2AZO 35,168-314-56-9
 WA2RQH 28,287-225-63-3
 WA2EAH 19,600-201-49-3
 W2KZN 2842-50-29-3
 WB2OEU (+ WAIHCO
 WA2SPL WB2SON)
 163,800-1092-75-
 W2KGY (WB4OI'Q WA9ZDY
 K9HNU WA8s JRB LGE SHA)
 70,200-476-75-24
 W2UC (WAI1JK WA2GTK
 WB2KXP)
 48,114-448-54-16
 WA2UDW (+WB2s AEO HEM)
 24,168-214-57-14
200 Watts or Less
 WA2SVH 28,426-233-61-18
 WA2SVC 17,472-169-52-21
 K2GSF 7560-90-42-11
 WA2KUL 7238-77-47-7
 WB2EWF 1806-43-21-7
 WA2LIK (+WB2CUH)
 41,610-365-57-24
N.Y.C.-L.I.
 WB2MZU 100,100-724-70-22
 WB2JSJ 90,288-627-72-23
 WA2YJN 40,468-303-67-19
 WB2CGF 31,130-283-55-9
 K2PAY 21,600-200-54-18
 WA2DCP 17,190-191-45-14
 W2MQB 13,112-149-44-11
 WB2GUB 12,936-132-49-8
 W2MOY 8772-102-43-6
 WB2DRW 8118-185-22-2
 WA2GMD 7210-103-35-9
 K2KJ 2800-50-28-5
 W2TUK 2100-50-21-1

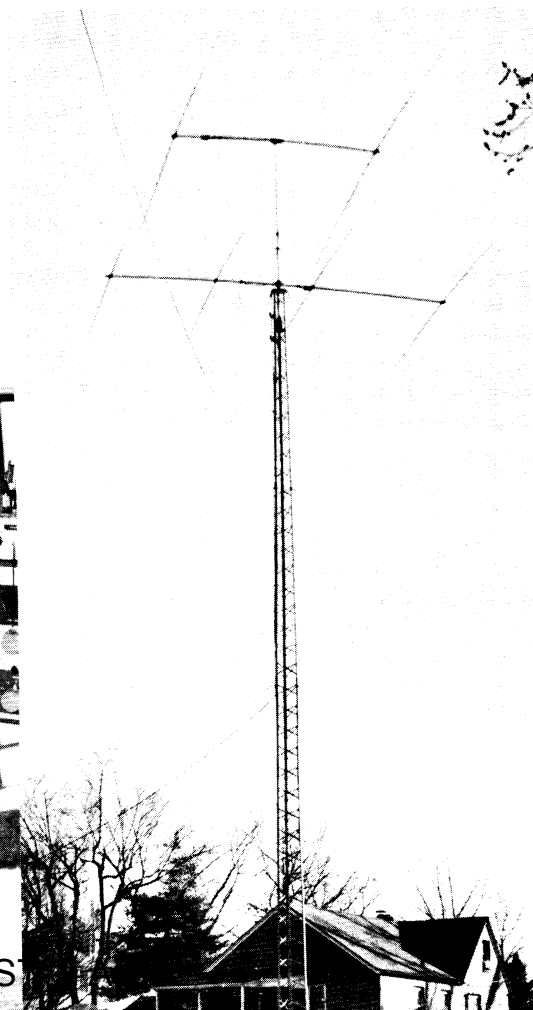
WB2LYB 53,440-420-64-15
 WA2IYH 51,590-488-67-23
 WB2GUQ 37,310-288-65-19
 W2FVS 26,544-237-56-8
 WA2RRG 26,100-219-60-20
 WB2PYM 18,600-187-50-14
 W2PDM 16,038-151-54-19
 WA2EXI 15,808-152-52-24
 WB2PCM 11,849-148-41-15
 WB2BXO 9560-123-40-15
 WA2MZE 8295-120-35-11
 WB2EKW 5576-82-34-12
 WB2MAN 4760-68-35-3
 WA2OJQ 4620-85-28-10
 K2HTX 4420-85-26-8
 W2EFI 3960-55-36-7
 WB2UFN 3792-83-24-7
 WB2OYV 2208-48-23-3
 WA2OJK 1632-51-16-7
 WA2RZA (+WA2RZB)
 50,344-406-62-22
 WA2UJK (+WB2UJQW)
 30,153-269-57-22
Northern New Jersey
 WA2DNY 86,578-593-73-19
 WA2MYZ 31,812-241-66-16
 WA2CWX 28,304-244-58-11
 WB2OWC 27,240-227-60-18
 WA2UOO 17,970-301-30-6
 W2MB 14,194-153-47-5
 WA2QQT/2 (+L. Lauzums)
 57,240-398-72-22
200 Watts or Less
 WB2RJJ 88,500-590-75-24
 WB2PWS 72,775-514-71-24
 WB2CQN/2 58,400-400-73-14
 WA2RYD 14,328-199-36-10
 WB2IKL 11,220-170-33-7
 K2BDX (WB2FWM, opr.)
 10,608-105-51-3
 WA2TWS 7636-83-46-10
 WB2FNZ 3944-58-34-6
 WA2PQL 2800-57-25-6
 WA2UOO/2 1320-44-15-1
 W2MO/2 (WA2s BLE EIW)
 78,480-545-72-24
Southern New Jersey
 W2PU (WA3MQJ, opr.)
 102,638-695-74-23
 K2JOC 69,861-481-73-18
 WA2TRK 27,324-253-54-17
 WA2NPD 24,000-200-60-10
 W2FCGY 8694-104-42-15
 W2PBF 5600-100-28-2
 W2LWO 140-10-7-2
 W2EPA (+WA2IUF)
 81,770-554-74-22
 WA2WLN (multiop)
 61,065-444-69-14
 K2FT (+W2ORA)
 29,252-206-71-10
 WA2IXP (+WA2s IXQ NZJ)
 28,000-350-40-21
200 Watts or Less
 WB2ELK 58,450-421-70-24
 WB2BYU 16,272-226-36-10
 K2SBW 13,200-150-44-9
 W2EA 10,534-115-46-7
 W2OGZ 4752-108-22-3
 WB2FNK 4686-71-33-7
 W2IYS 3384-47-36-6
 WA2ELJ 2-1-1-1
Western New York
 W2CXM (WAI1LKX, opr.)
 110,175-739-75-19
 WB2PGM 82,500-550-75-14
 WB2YQH 77,700-518-75-15
 W2BHP 54,166-380-73-24
 WA2FXZ 48,783-354-69-14
 W2FXA 27,900-225-62-7
 W2AF'F 24,192-126-56-11
 WA2MBP 19,964-161-62-8
 WA2DHG 18,096-156-58-13
 WA2BCK 7400-100-37-2
 WA2UHX 4176-58-36-7
 K2GXT (WA3s CQW DEQ)
 135,875-912-75-24
 K2CC (WA2s JEQ MOQ MOR
 WB2s HUA SMD)
 98,264-692-71-21

W2VDX (+W2EWO WA2QXA
 WN2JLM)
 60,000-400-75-24
 K2DTQ (+J.Gromniak)
 58,175-450-65-
200 Watts or Less
 WA2LCC 87,468-592-74-23
 WA2MPC 52,800-400-66-13
 WA2AOG 31,616-247-64-15
 WA2RFR 27,000-251-54-12
 WA2EKW 25,920-240-54-10
 WA2BRX 23,520-280-42-19
 WA2OJC 14,100-152-47-15
 K2MQY 11,858-122-49-9
 WB2RXS 9030-105-43-5
 W2FHU 8442-101-42-6
 W2ECO 6840-90-38-8
 WA2CLG 3604-53-34-4
 K2OWF 2511-47-27-5
 WA2LEZ 2200-50-22-6
 WB2LQU 2068-47-22-6
 WA2SIS (+WA2s AYC ICU)
 73,556-497-74-15
3
Delaware
 WA3HGV (WA3KZQ, opr.)
 97,500-650-75-15
 WA3GSM 51,450-343-75-12
 WA3IID 20,176-194-52-13
200 Watts or Less
 WA3RAP 82,644-582-71-24
 WA3OBY 51,090-400-65-18
 WA3RQH 11,232-157-36-10
 WA3DUM 6384-114-28-8
 K3KAJ 4500-91-25-7
Eastern Pennsylvania
 W3DQG 104,488-706-74-24
 K3DPQ 93,436-659-71-21
 K3HXS 66,170-509-65-19
 K3IGI 9120-114-40-7
 K3RYD 572-22-13-6
 W3FTG 288-12-12-1
 W3YR (WA2s ARY BCY IUR
 WB2VUF)
 26,800-200-67-14
 K3EGE (+W3EFH)
 6272-56-56-5
200 Watts or Less
 K3DVS 83,694-567-74-22
 K3AWZ 55,648-377-74-17
 K3HYT 33,152-259-64-24
 WA3QLG 33,099-281-59-24
 K3MNT 26,364-259-52-14
 K3ALTC 25,420-205-62-21
 K3KHL 18,144-144-63-14
 WA3ABN 7776-108-36-9
 WA3QWP 7316-118-31-9
Maryland-D.C.
 W3GRF (K1ANV, opr.)
 164,850-1101-75-24
 K1LPL/3 (WA3IAQ, opr.)
 162,075-1083-75-24
 W3AZD 154,500-1030-75-24
 W3IN 143,400-956-75-23
 W3EZT 136,200-908-75-19
 W3GN 100,536-712-71-19
 WA3AMH/3
 87,120-605-72-18
 WA3QHI (WA3MJI, opr.)
 83,025-555-75-22
 W3ZNH 77,832-565-69-12
 K3CKT 77,088-529-73-18
 WA3LHG 72,600-484-75-21
 W3GRM 64,350-429-75-21
 K3ANA 58,236-422-69-15
 W3CSZ 52,352-411-64-11
 W3FKT 45,144-314-72-16
 K3JYZ 44,588-314-71-13
 W3M1J 44,100-315-70-18
 WA3AFO 40,936-301-68-13
 W3AWN 38,936-314-62-21
 W3HVM 29,700-225-66-11
 W3FA 28,228-252-57-10
 WA3THD 27,267-230-61-21
 W3TMZ 27,048-196-69-7
 W3HII 20,862-171-61-13
 W3EWP 18,972-186-51-4
 W3DBT 9594-123-39-4
 W3KA 5776-76-38-9



Top left: Some of you might remember him as DL5BR. His now back in the states handing out rare W2-land WSOs as WA2CLQ. Jeff used a Swan 500 and four 811As to snag over 1000 QSOs in all sections from ENY on phone. Above: The antenna farm at WA2CLQ. The monobanders are (from the left); 5 elements on 15 at 42 feet; 3 on 20 at 46 feet and (stuck back in the tree) 3 on 10 at 40 feet. Left: A participant in many a contest is K4PUZ. Don topped Tennessee again this year on cw (for the sixth year in a row) with a fine 129K effort. His Heath gear feeds a TH6DX and dipoles.

Below top: Using a DX-100, S-40 and R4 with a multiband vertical and 2 element 20 meter beam radiators W1DKU ran up a very nice 69K low power cw score to take the Western Mass. section certificate. Below, bottom: Participating in his first SS since his Novice years in 1966 WA0TKJ walked off with the section award in Kansas. A tribander and dipoles at 50 feet spewed his signals through the country for the tune of over 158K. Right: Some of the antennas of Mo. Section leader W0TDR. The 2 element 40 meter beam on top is at 75 feet. The lower beam is a 4 element 20 meter radiator. Warren has another tower that supports a 4 element 10/15 quad at 62 feet. These antennas can be fed by either of 2 S-lines followed by a choice of a L-4 or SB-220 afterburner. Not bad, eh?



W3ZH (W3KK, opr.) 3762- 57-33- 5	WB4BNH (WB4WYI, opr.) 11,956- 122-49- 7	WA4JIY 24,528- 219-56-17	WASQXD (+K5YAA WASCBE) 147,375- 987-75-23
K3GJD 1900- 50-19- 2	K4QG 9680- 110-44- 1	W4GF 12,180- 145-42- 6	WBSAHX (+WASWJC) 87,696- 609-72-24
W3FCI 1496- 34-22- 8	W4HOS 2660- 48-28- 4	WB4PMG 10,395- 116-45- 8	
W3RIL 2- 1- 1- 1	K4EN 1350- 27-25- 5	W4QCW 7098- 91-39- 2	
K3WUW (multiop) 148,200- 989- 75-23	WB4LZQ 112- 8- 7- 1	K4JYM 7030- 95-37- 3	
W3KMW (+K2QBW) 107,596- 728-74-16	WB4RQ/4 4- 2- 1-	WB4PYO 5478- 84-33- 5	
W3BWZ (multiop) 96,750- 645-75-17		WB4BLJ 4480- 64-35-11	
W3ADO (W3NAU WB4s GCS IYV WA7MLZ WA8YCK P.Cites J.Lambert) 95,256- 666-72-23	Georgia	K4CG (multiop) 101,550- 677-75-22	200 Watts or Less
WA 3 G I N (+ WA 3 QDH WB4IET) 72,408- 649-56-19	K4OSL 105,524- 716-74-21	WB4TBO (+WB4WIW) 58,029- 422-69-22	WASRRK 47,754- 379-63-16
WA3JZR (W3s DRY OEP TOB WA3s PKS RZH) 69,116- 467-74-18	WB4JBS/4 87,172- 590-74-19	WA4KJR (multiop) 55,545- 404-69- 9	WBSBRG 32,538- 319-51-15
W3AU (+W3ZKH) 51,120- 355-72- 9	WB4RUA 58,392- 407-72-18	W4JVN (+K6ETM) 53,280- 370-72-18	WASYKO 23,084- 199-58-12
	K4H4V 32,760- 234-70-14		W5SSOD 10,856- 118-46-16
	W4JM 16,469- 195-43- 6		WBSEEE 9360- 104-45- 3
	K4BAI 16,380- 183-45- 4		WBSEPI 8720- 109-40- 8
			W5EIBC 5049- 77-33- 2
			WA2ITR/5 608- 19-16- 1
			W5ONL 340- 17-10- 1
			WBSAAR (+WBSAOF) 60,492- 426-71-22
			W5SQGZ (+K5SSXO WAsS TCM WDW W5GBR) 54,244- 382-71-22
			Oklahoma
			WASZWW 134,784- 937-72-22
			WASDTL 30,500- 250-61-15
			WBSEEE 16,968- 154-56- 6
			WBSCRX (multiop) 3886- 67-29- 3
			200 Watts or Less
			K5DCEC 23,541- 207-57-18
			W5YH 10,656- 112-48- 8
			W5YMZ 7920- 99-40- 7
			W5YJ (WASZKL WBSAGZ) 26,622- 231-58-13
			Southern Texas
			K5PFL 152,400-1016-75-24
			WASZNY 112,200- 758-75-20
			W5SBB 76,320- 530-72-10
			WA7CIP/5 41,400- 300-69-12
			WA5LES 20,240- 186-55- 5
			WSND (WASQHI, opr.) 1170- 39-15- 3
			WBSFOU 504- 21-12- 3
			K5YXH (K5OVW WAsJVO) 89,206- 611-73-16
			W5PXZ (WAsS QHI QHX W B5DPS) 25,842- 219-59-21
			200 Watts or Less
			WBSAAV 97,412- 689-71-18
			WA0CWV/5 44,872- 320-71-18
			WA5WQF 38,048- 328-58-11
			WBSBIF 26,928- 267-51- 6
			WA1LWS/5 18,252- 169-54-13
			WASAUZ 6570- 73-45- 5
			Canal Zone
			200 Watts or Less
			KZ5BB 13,272- 120-56- 7
			6
			East Bay
			WA6NGG 82,800- 600-69-15
			W6RQG 17,172- 159-54- 4
			200 Watts or Less
			WA6BBV 97,056- 674-72-23
			Los Angeles
			K6JAN 174,750-1165-75-24
			W6BVZI 173,767-1194-73-24
			K6SVL (K0GJD, opr.) 163,650-1091-75-23
			W6DSQ 161,650-1019-75-24
			WA6DPQ 71,248- 488-73-17
			WA6KKP 70,290- 495-71-13
			K6ELX 67,488- 456-74-22
			W6DQX 52,528- 392-67- 7
			K6SSN 45,450- 304-75-15
			WA6GGK 44,446- 313-71-18
			W6BVN 38,055- 323-59- 5
			W6PYK 34,310- 235-73-15
			W6GEO 30,160- 260-58-14
			K6MP 27,540- 255-54- 6
			K4BK/6 26,112- 192-68-21
			WA6PFX 22,680- 189-60-15
			W6QLI 9844- 107-46- 9
			WA6KZI 9266- 113-41- 5
			W6BSUH 4800- 80-30- 5
			W6DGH 3074- 53-29- 1
			W6YRA (K3ZLA W6A9K

WB6GGJ WA7DAC
157,650-1064-75-23
W6VPZ (K6s HRT KH YLT
W6s CFM EIG LRY WA6s BPL
NLO WB6QVD)
79,848- 556-72-24

200 Watts or Less

WB6OLD 87,912- 612-72-21
WB6PXP 69,966- 507-69-22
WA6TXE 24,600- 205-60-12
WB6KUM 6800- 85-40- 6
WA6ESF 5848- 86-34- 0
WA6OTU 5328- 75-37- 8
WA6OKP 3724- 69-28-12
W6JPH 2160- 45-24- 2
K6JYD 272- 17- 8- 1
WA6SFM (WA6DHM WB6s
CIA JJE)
69,864- 492-71-18

Orange

W6OOU 109,964- 743-74-22
WA6HWR 77,928- 573-68-18
WA6JQX 33,536- 262-64-10

200 Watts or Less

WA6NGO 34,587- 277-63-19
WA6BFD 15,840- 165-48-22
WA6BZT 14,352- 140-52-10

Santa Barbara

K6BCE (WA6NNJ, opr.)
162,750-1085-75-24
W6UA (W6HOH, opr.)
138,450- 923-75-20
K6OPH 104,488- 706-74-23
W6DKQ 43,296- 328-66-15
W6GEB 6732- 99-34- 3
W6SUN (+WB6ULR)
92,592- 643-72-12

200 Watts or Less

W6MQF 25,800- 215-60- 8
WA6ENF 20,680- 188-55- 6
W6HYK 17,568- 144-61-13

Santa Clara Valley

WB6KKB 162,900-1093-75-22
WA6GFY (WB6EXW, opr.)
92,442- 651-71-24
K6BWD 40,936- 301-68-17
WB6DBO 33,428- 277-61-18
K6VWG 27,392- 214-64- 8
K6QEZ (WA6AMW, opr.)
1064- 28-19- 4
WA6DKF 742- 27-14- 1
WB6SFS 12- 3- 2-
W6OKK (+WB6DSV)
140,100- 934-75-24
W6YX (VE2MV WB2SCT
WA6SLF WB6RAL WA9BMG
WB9FUV)
74,970- 539-70-16

200 Watts or Less

WA6ETW 56,736- 396-72-17
K6CN 20,955- 191-55-11
WA6BTE 12,500- 125-50-12
K6WT 9090- 101-45-12
WA6AUE 918- 27-17- 3
W6WZF 240- 12-10- 2
W B 6 R G R (+ W 6 V P V
WB6HVW)
41,272- 308-67-19

San Diego

W6ONV 150,975-1008-75-21
WB6OFX 33,792- 260-66-12
WB6LEC (+WA6KHH)
68,302- 482-71-24

200 Watts or Less

WB6LJO 24,278- 199-61-14
W6JXA 5280- 80-33- 6
WA6LOC 1007- 27-19- 6

San Francisco

W6NUT (+WA6DKF)
166,050-1107-75-24
W6BIP (+K6SO WA6DJ)
114,300- 762-75-23

San Joaquin Valley

WB6RKH 100,350- 671-75-24
K6COF/6 28,032- 221-64-12
WA6TVC (+WA6ZJC)
135,600- 904-75-24

200 Watts or Less

WB6KMW 44,744- 329-68-24
WA6GRA 29,402- 241-61-12
WB6FNH 18,600- 150-62-10
WA6BEV 17,270- 160-55-18

Sacramento Valley

W6KYA 44,520- 318-70-11

200 Watts or Less

WA6NYV 59,792- 404-74-19
WA6GHH 33,720- 281-60-22
WB6HNX 15,050- 151-50-13

Hawaii

KH6IJ 114,600- 764-75-19
KH6GMP 72,708- 499-73-17
KH6FF 22,788- 211-54-11

7

Arizona

W7ZMD 90,738- 642-71-18
K7JVR 20,272- 181-56-16

200 Watts or Less

K7PXI 99,134- 679-73-18
W7AWH 31,773- 313-51- 9
WA7KPH/7
18,468- 171-54-19
W7FCD 4624- 68-34- 2

Idaho

W7CFL 149,250- 996-75-23
K7NHV/7 52,266- 422-62-11
W7CNL 28,112- 252-56- 4
W7UO (K7TAK WA7s FSI
GOO MYG QOS QVP RZH
K0KDT WN0DQC)
67,340- 496-70-24

200 Watts or Less

W7GHT/7 126- 9- 7- 1

Montana

W7GKF 144,375- 968-75-24
K7LTV 142,820- 965-74-20
W7TYN 77,964- 534-73-20
K7PGL 47,265- 343-69-
W7LR 18,750- 190-50- 8
W7FO (K7s EGG RRS W7FSU
WA7s FBN FLG FNP MUP
OBH PZO QZD)
72,600- 550-66-24

200 Watts or Less

K2UAR/7 48,824- 362-68-24
W7CBY 3348- 54-31-12

Nevada
W7YKN 118,800- 825-72-24
W6HX/7 (+WB6VFJ)
135,300- 902-75-24

Oregon

WA7FFS 26,718- 222-61-13
W7GUR 26,550- 225-59-19
W A 7 I W U (+ W A 7 K X N
WN7TDB)
19,880- 178-56-23
WA7MHP (+WA7PXM WN7s
SKF TPS)
19,600- 175-56-18

200 Watts or Less

WA7OGY 65,100- 465-70-19
WA7QCC 59,787- 410-73-24
WA7JBE 45,288- 333-68-14
WA7OPW 20,124- 195-52-11
WA7SHP 9064- 104-44-16
WA7OVU 2- 1- 1- 1

Utah

W7HS 69,414- 504-69-13
W7IXO 5408- 52-52- 9

Washington

W7RM (K7VP, opr.)
240,975-1609-75-24
W5QQQ/7 (K7JCA, opr.)
157,875-1064-75-24
WA7GWL 123,256- 882-71-24
W7EXM 122,325- 820-75-20
WA7JBM 116,775- 790-75-18
WA7FFU 115,200- 768-75-24
W7UBA 102,816- 717-72-20
W7VMF 94,032- 653-72-19
W7NP 93,096- 647-72-18
W7BUN 91,834- 629-73-21
K7ONB 68,544- 513-68-20

W7YTN 56,592- 393-72-18
K7NWS (WA7BSQ, opr.)
53,544- 388-69-21
WA7JCB 51,380- 367-70-24
K3R1W/7
45,369- 320-71-23
W7JEG 37,818- 327-66-17
W7CJL 35,772- 271-66-21
WA7FBO 35,620- 274-65-14
K7MOK 33,611- 277-61- 6
W7NG 26,280- 219-60- 6
WA7RWK/7
25,758- 243-53-10

K7GGD 11,000- 110-50- 6
W7OS 9918- 171-29-10
W7HLP 8858- 103-43-12
WA7ACQ 8214- 141-37- 6
W7QCV 7488- 104-36- 5
W7AZI 7215- 93-39- 8
W7PK 7200- 100-36- 5
W7WLX 5624- 74-38-11
K7JUT 3640- 70-26- 3
W7YBX 2862- 54-27- 3
WA7CSF 2646- 49-27- 5
K7BBO 1696- 53-16-14
WA7IPR 26- 13- 1-18
WATTLK (+WN7TSO)
1566- 45-18- 6

200 Watts or Less

WA7IVO 52,704- 366-72-21
WA7FHG 39,121- 276-71-19
W7FXQ 26,230- 217-61-22
WA7OBL 23,482- 199-59-12
K7RSB 23,200- 200-58-19
WA7GYR 23,188- 187-62-10
K7GZO 23,140- 223-52-19
W7SFL 16,744- 162-52-19
WA7TAD 14,716- 142-52- 9
K7NZU 13,573- 139-49-12
WA7QGI 10,800- 120-45-12
WA7QAT 10,710- 131-42-17
WA7JFM 8904- 106-42-14
W7WMY 7917- 102-39- 5
W7EA 7805- 114-35-10
W7WIA 5966- 79-38-11
W7RGD 5576- 82-34-14
WA7PVE 5202- 77-34-15
K7IND 4680- 78-30- 5
WA7UGF 2783- 61-23- 9
W7RJW 2300- 50-23- 9
K7TTS 2058- 49-21- 6
WA7JUB 1962- 55-19- 5
K7KYG 1140- 30-19- 5
WA7MJX 702- 27-13- 1
W7GAX 252- 14- 9- 1
W7GTM 234- 13- 9- 3
K7PZS 150- 15- 5- 3
K7CYZ 110- 55- 1-15
WA7THA 76- 38- 1-17
W7ZMZ 4- 2- 1- 1
WA7OEE (+WA7s MSD OEF
ORB PPK WN7TOM Jerry)
47,460- 340-70-23

Wyoming

WA7JYO 39,000- 300-65-23

Alaska

KL7AIZ (WB2GJW WB4s ARV
LEK WN9IQA B.Shoop)
52,224- 409-64-12

8

Michigan

WA8ZDT 187,738-1272-74-24
W8DQL 151,626-1027-74-24
W8OOH 116,850- 780-75-23
WB8JYX 48,440- 346-70-17
W88FR 36,252- 329-57-16
W8TWJ 34,176- 267-64- 9
W8KEB (WB8AYW, opr.)
30,912- 242-64-20
WB8GDO 24,522- 201-61- 8
WA8ZTQ 21,352- 157-68-18
WB8KVF 17,400- 150-58-10
WB8JCG 16,402- 139-59-12
W8DM 10,944- 114-48- 9
WB8ILV 4200- 75-28-11
W8VFC 2484- 46-27- 3
W8FSZ 2024- 44-23- 2
W88KME 1120- 35-16- 3
WB8DIT 442- 17-13- 2

200 Watts or Less

WB8DBN 57,960- 403-72-13
W8KZM 45,359- 340-67-27

W8TJQ 39,312- 273-72-16
K8MFO 39,000- 260-75-11
K8MJZ 36,828- 279-66-
K8GSR 32,620- 233-70-15
W8TZZ 25,620- 212-61-15
K8ZZU 24,583- 202-61-20
WB8JVW 15,876- 147-54-13
W8QAO 13,716- 127-54-15
WB8HCV 7072- 104-34-12
W8KIN 2900- 50-29- 4
WA8OJI 2800- 50-28- 3
WB8GUD 2800- 50-28- 2
WB8BHR 2020- 51-20-11
W8TIC 850- 25-17- 5
K8HJI 816- 24-17- 3
WB8DSG 624- 26-12- 2
W8EGI 256- 16- 8- 1
WB8MKR 210- 15- 7- 1
W8CTY 40- 5- 4- 1
K8DAC (K8MFO W8CTY
WB8s GUC KD HYD WN8s
LZA NTX)
41,272- 308-67-22

Ohio

WA8ZDF (WA8RWU, opr.)
161,400-1077-75-24
WA8USP 151,350-1009-75-23
WA8YWX 127,800- 852-75-24
W8AEB 94,350- 629-75-20
WA8MEM 53,108- 374-71-17
W8VOI 41,040- 285-72-18
K8BNB 32,376- 228-71- 7
WN8HO 30,550- 235-65-17
WB8LGX 27,588- 209-66-18
W8GKA 26,398- 197-67-20
W8MH 25,792- 208-62-14
WB8KXV 22,320- 180-62-18
WA8LVJ 20,776- 196-53- 7
WB8KQT 15,070- 137-55-11
W8OK 11,250- 75-75-10
W8OJW 9374- 109-43-14
WA8LWH 5670- 81-35- 7
WA8OYR 3900- 50-30-10
W8IRG 2728- 62-22- 5
W8IMF 468- 18-13- 3
WA8DBI 320- 16-10- 5
K8NXY 110- 11- 5- 2
W8EDU (WN2THV WA3MSZ
WA8RXM WB8s AHB JJS)
153,180-1036-74-22
K 8 R M K / 8 (+ W A 3 B G E
W 8 K G E)
119,880- 833-72-15
WB8JBM/8 (WB8s DQP IRL
JJA JOZ JPA WN8s LSN MQC
MQD)
113,475- 759-75-24
W8KF (+WB8HNX)
34,572- 259-67-13

200 Watts or Less

K8YQW 50,680- 362-70-19
WAILKU/8
43,120- 308-70-23
K8EKG 39,534- 300-66-13
W8SWB/8 33,176- 286-58-24
WB8IAY 30,750- 206-75-20
K8CVJ 25,472- 206-64-11
WB8ESB 23,985- 186-65-14
WA8VEV 21,420- 210-51-16
K8ISS 20,064- 176-57-20
W8UPH 18,124- 197-46-14
W8VZE 17,100- 150-57-10
WB8NRC 16,815- 143-59-16
W8GYS 15,900- 159-50-20
WB8DGO 15,132- 151-52-22
W8MGO 14,756- 119-62- 9
WB8FWQ 12,328- 134-46- 9
K8MLO 11,820- 100-60- 8
W8EQC 11,160- 124-45-13
WB8HHN 10,168- 124-41- 9
WB8HRW 8850- 149-30- 7
WB8LNM 5376- 100-28- 4
WA3BGE/8 2310- 55-21- 6
WA8MGI 1785- 53-17- 6
W8FW (K8UMN W8FBL WA8s
MVV VKK WB8s ASZ DTN
ERH M.Chaney)
36,708- 267-69-24
WB8EAS (+WB8s IYO JMV)
29,585- 245-61-21

West Virginia

K8QYG 2- 1- 1-

Illinois
W9DOB 133,006-915-73-22
WA9JCO 72,562-501-73-19
K9AUZ 68,034-498-69-20
WA9BLP 60,568-452-67-21
W9MTN 56,000-400-70-21
W9QXO 54,605-410-67-21
WB9APC 44,916-394-57-9
WB9DED 43,032-326-66-14
K9BOL 37,319-279-67-16
WB9CPT 30,160-290-52-11
W9IB 26,000-200-65-7
W9KDR 24,576-192-64-14
WB9HTJ 23,126-189-62-15
WA9DRE 19,038-167-57-10
WB9JPS 14,280-140-51-15
W9UDK 10,580-115-46-5
K9DWK 8342-97-43-4
K9KHI 7326-99-37-3
WB9DVQ 2790-45-31-3
W9YYG 1440-36-20-1
W9OTV 780-26-15-20

200 Watts or Less

WB9CGL 85,824-596-72-24
WB9GFC 73,500-492-75-24
WB9AJV 72,080-530-68-23
WB9HAD 59,640-421-71-23
WA9SVZ 44,744-329-68-20
K9UQN 38,927-291-67-12
WB9FNY 21,168-168-63-14
WB9GLQ 20,458-193-53-16
WB9FHL 19,376-174-56-20
K9DKJ 15,714-146-54-10
WA9ZWY 11,340-126-45-7
W9COD 9828-126-39-11
WB9GSZ 8686-101-43-11
W9PFD 6150-75-41-5
W9REC 3584-64-28-8
K9ORP 832-26-16-1
W9ZPC 520-20-13-4
W9HPG 306-17-9-2
WB9IDS (+WB9s EBP JFK)
126,540-863-74-22
WB9GHT (+WB9HFD)
17,914-169-53-11
WA9JQE (W9YPO WA9OCK)
5040-63-40-8
W9LVH (+WN9HGN)
616-22-14-1

Indiana

WA9BWY/9
135,750-909-75-22
WA9AUM 122,100-825-74-21
W9YB (WA9VYJ, opr.)
120,168-839-72-24
K9CUY 111,962-758-74-21
K9HDP 93,980-635-74-20
WA9NPM 76,950-515-75-24
W9ZTD 73,875-493-75-16
WB9CEP 46,230-345-67-15
WA9UFO 26,800-200-67-12
WB9EQY 20,400-200-51-10
W9BF (WA30JX WA8TGX
WB9s CNE ITG)
78,621-539-73-24
W9BHR (WA33JUA WB9BYS
J.Archer B.Barr G.Benedict)
44,289-399-57-24
WB9AUJ (+WA9WKA)
42,480-295-72-19

200 Watts or Less

W9SFR 46,760-334-70-18
K9CDB 41,076-326-63-15
WA9EBR/9
24,857-236-53-12
WB8IDK/9
20,664-164-63-12
W9MDW 10,944-114-48-6
WA9QDB 10,212-112-46-14
K9IU (K9KYH WB9s CUK
DZS EAY EAZ EON GVV)
105,225-702-75-23
Wisconsin
W9YT (K9LBO, opr.)
198,900-1327-75-23
K9EYA 63,210-453-70-21
W9ZHE 44,400-300-74-15
W9GKJ 34,710-267-65-14
K9REE 33,800-260-65-12
WB9DRE 32,512-259-64-13

WB9ELH (+WA9PUN)
54,954-391-71-20
W9NYJ (multiop)
43,540-311-70-14

200 Watts or Less

W9RQM 90,946-615-74-17
WB9FKL 49,840-356-70-22
K9HFR 37,084-254-73-16
WB9CKG 33,480-274-62-15
WB9BGJ 18,348-139-66-17
K9JPS 15,096-148-51-14
K9MIX 14,960-136-55-11
K9YBC 12,960-135-48-6
WB9KDP 12,720-121-53-15
W9CTI 10,209-125-41-16
WB9CHP 10,166-111-46-10
WB9KPX 9696-101-48-16
W9VHA 5214-79-33-9
K9MAU 4200-70-30-5
W9LOM 3936-62-32-10
WA9AWO 1760-55-16-2
K9OXY 570-19-15-2
WB9EWQ (+WB9EWR)
24,827-208-61-17

0

Colorado

WA0QLH (WB0DJY, opr.)
173,100-1154-75-24
W0MYN (WB0DLE, opr.)
151,996-1027-74-24
WA0CVS 121,764-834-73-16
K0TMM 93,126-711-66-17
W0BWJ 38,232-267-72-18
K0VFN 29,829-245-61-12
W0ATA 12,960-120-54-7

200 Watts or Less

WB0AMJ 38,304-336-57-9
WB0GEX 20,748-182-57-13
W0LQ 9912-118-42-5
WB0BLJ 7482-87-43-8
K0FLQ 6960-87-40-5
W0LBP 5244-69-38-5
W0JF 1292-34-19-3
WB0FRB (+WA0YED)
19,700-198-50-8

Iowa

WA0JCE 108,332-746-73-20
WA0ATY 18,666-153-61-8
WA0EFN 5544-77-36-4
K0GXK (+W9LVT)
146,250-981-75-23
W0WSV (K0s HWE PSC W0s
BTY GGO WA0s FHJ W0Y
WB0s BPH CZN FHH FNM
WN0s EXM GWH GWJ JJP
M.Heffern)
43,810-339-65-21

200 Watts or Less

K0LUW 87,000-581-75-23
WA0TAQ 49,500-375-66-21
WB0DLC 30,876-249-62-16
WA3PWL/0
11,200-160-35-10
WA0HIK 4560-60-38-9

Kansas

WA0TKJ 158,775-1102-73-22
K0KU (WB0FGV, opr.)
141,266-972-74-22
WA8JZY/0
103,368-709-73-21
K0UYN 83,283-589-71-15
K0ROD 62,160-444-70-20
WB0CEF 16,112-152-53-13
K0CML 2688-48-28-2
W0OQQ (WA0s SWC TAS
WB0DAV T.Visco)
42,640-331-65-21
W0SOE (WA0WTT WB0s AMA
BVC WN0DPR)
38,880-324-60-14

200 Watts or Less

WA0DOZ 23,808-186-64-19
WA0VJF 13,575-91-75-16
WB0CUP 11,270-123-46-13
K0PFV (+K0CVA)
6,128-426-72-24

WA0SEV/0 (+K0s OLI TLQ
WB0EYS)
44,756-334-67-20

WB0BMC (+WB0FIS)
20,650-175-59-14

WB0CBR (+WB0IRY)
8127-97-43-8

Minnesota

WA0VKP 143,100-954-75-24
W0NUH 133,350-889-75-21
WA0ENP 110,230-760-73-18
WB0CJV 109,816-742-74-18
WA0RWB 106,500-710-75-20
WA0PRS 102,273-701-73-20
WB0ANT 68,442-519-66-13
W0IYP 60,270-431-70-9
W0HW 55,860-400-70-13
WA0WEZ 50,022-401-63-7
WA0MHJ 45,968-341-68-8
WA0URW 40,820-318-65-10
WA0VPN 40,796-329-62-6
K0IJL 40,788-309-66-10
W0FDK 32,768-256-64-12
K0CHE 29,000-250-58-12
W0TIV 20,160-160-63-6
WB0CLV 13,950-155-45-6
WB0WV 6314-77-41-9
WA0KQU/0 5811-75-39-3
W0HP 2001-44-23-1
K0ZXE (+WA0IEF)
92,710-635-73-24

200 Watts or Less

WB0DSP 122,850-819-75-24
WA0WUC 23,045-211-55-19
WB0DSJ 22,896-212-54-14
WB0EJG 20,496-184-56-18
W0PAN 10,650-75-71-8
WB0BQA 9108-99-46-5
W9LIZ/0 8424-109-39-6
W0MKU 7562-100-38-10
W0YC 2420-55-22-2
WA0QWY 418-19-11-10
WA0VHX (+WA0GES WB0s
DYZ DZA EJI)
56,787-413-69-21
WA0YAW (+WA0BWM)
52,824-372-71-
WB0BJZ (+WB0AJA)
46,150-355-65-18
WA0NWR/0 (+WA0s IDD IDK)
44,088-355-66-20

WA0RXB (+WA0LMT)
23,084-199-58-22

Missouri

K0ZHD 67,744-464-73-23
K0RPH 54,648-398-69-9
W0QWS 49,280-355-70-22
W0CDC 26,928-204-66-16
K0EY 6612-87-38-5
K0SJJ (+W0HBB)
63,000-422-75-18

200 Watts or Less

WA0JNF 51,660-371-70-24
W0MYQ 45,057-328-69-19
WB0AEW 41,454-330-63-21
WB0FMT 34,524-274-63-20
WA0VBZ 20,580-173-60-11
WB0EQZ 8473-113-37-6
W0BV 2800-50-28-6
W0DSW 2800-50-28-3
WB0DQI/0 (WA0WBJ WN0s
DBF FOI GQP)
41,646-318-66-24

Nebraska

W0ODF 31,620-310-51-10
WA0QJK 6080-81-38-4
W0KK (+K0AAK)
36,288-285-64-16
WA0WHB (+WB0DIQ)
30,256-248-61-14

200 Watts or Less

K0DTK/0 28,728-228-63-11
K0SBV 15,720-131-60-12
W0SPF/0 10,878-131-42-11
W9LHG/0 5916-87-34-4

North Dakota

WB0BCZ (WA0OVV, opr.)
91,168-619-74-24
WA0MLE 10,494-99-53-3
WA0LJM 10,000-100-50-9

200 Watts or Less

K5ZRR/0 39,534-300-66-19
WB0IQK 26,845-230-59-16

South Dakota

K0VVY (WA0s VKQ ZCE
WB0CVW)
109,150-740-74-24

Disqualifications

CW: W2GGE, W3CRE, K5RHZ. PHONE: K1EUF, WA1JHQ,
W3CRE, WA3GUJ, K5RHZ, W7MWR (opr. of W7OAD), WA7MEO
and WA7MJJ (opr. of W7SFA), K8UNG and WA8VHV (opr. of
K8UNG), K9KGA (opr. of WA9GMK).

Check Logs

CW: VE2SD, VE3DH, VE6MP, W1LXE/VE8, W1OQ, W2SS,
W3EBK, WA3THD, WN3SWP, K4EJQ, W5SYH, W6DWJ, WA6NSZ,
WA7HHI, W8VPC, WB8JAY, WB8NRC, WB9FHL, WN9HZB,
WN0EMZ. PHONE: VE3DH, VE7UBC (VE7BBQ, opr.), W1OQ,
WA2TMD, WA3GRO, WB4OQN, WB5FFA, W6OOH, WA6WFW,
K8LOU, W8K0I, K9CHX, WB9BPG, WA9BZY/0, W0DAD/KH6,
KL7HJE, KZ5DK.

Invalid Logs

CW: WB6ABK/6. PHONE: WB6ABK/6.



Stolen Equipment

A Hallcrafters SR-150 No. 415006-325001
with ac supply PS-150AC No. 715001-326017,
plus microphone, SWR meter, low-pass filter and
connecting cables were stolen from Lary
Lasserman, WA2FHI, 28 Washington Court,
Livingston, NJ 07039.