

Results

SK6AB



36th ARRL International DX Competition

REPORTED BY AL NOONE,* WAIKQM/WB6SAZ

ONCE AGAIN we take great pleasure in another record-breaking ARRL DX Test. Due in no small part to the outstanding conditions exhibited on most bands during three of the four contest weekends, (Contrary to popular opinion; an aurora, not the eclipse, played havoc with the second phone weekend, Mar. 7-8.) our total entries for 1970 ran at 2822 as compared with 2468 in 1969. Breaking this total down, we find 918 W/VE CW entrants followed by 864 W/VE Phone, 767 DX CW and 273 DX Phone. The above representing returns from 122 countries and 49 states. (Where was Wyoming?)

If our figures are any indication, it certainly appears that while phone operation in the USA and Canada continues to gain ground, such is definitely not the case for the rest of the world where cw still dominates the scene.

A number of people have expressed increasing confusion with the amount of unusual prefixes appearing in contests. In most cases, the answer may be found by consulting the ARRL Handbook under International Prefixes. If this fails, try W9BRD's "How's DX" column in *QST* for the latest in DX news.

In each years contest there are always a number of QSOs/Multipliers to be gained from 160 meter operation. This year EI9J, JA7AO, KH6IJ, KP4AST and PJ2VD were but a few of the DX stations active on Top Band. In the interest of promoting more activity on this band the ARRL Board of Directors has authorized a 160 Meter Contest (CW only, initially.) to take place from 0001 GMT Dec. 12 to 1600 GMT Dec. 13. Be sure to see the complete rules elsewhere in this issue.

And, since its never too early to begin preparation for next year, here's some news I'm sure you will find of interest. The 1971 ARRL International DX Competition will formally

recognize single-transmitter multioperator entries as a distinct category from multi-multi. The results will indicate the groupings, probably with expanded editorial coverage.

CLUBS

Forty-one ARRL-affiliated clubs, a considerable increase over last years 32, piled up a fantastic combined score of over 277 million points. Competition was keen, the *POTOMAC VALLEY RADIO CLUB* coming out on top over the *FRANKFORD RADIO CLUB* by a slim 3 million points! In a close race for third, *MURPHYS MARAUDERS* nosed out the *SOUTHERN CALIFORNIA DX CLUB*, who in turn outclassed their competition to the North, the *NORTHERN CALIFORNIA DX CLUB*. The only other score over 10 Megapoints was claimed by the *128 CONTEST CLUB*. Rounding out the Top Ten were the *ORDER of BOILED OWLS of NEW YORK*, the *NORTHERN ILLINOIS DX ASSOCIATION*, *RICHARDSON ARC* and the *CENTRAL MICHIGAN ARC*.

CW

Phone

Potomac Valley RC	1	Potomac Valley RC
Frankford RC	2	Frankford RC
Murphy's Marauders	3	SCDXC
SCDXC	4	Murphy's Marauders
NCDXC	5	NCDXC
128 Contest Club	6	Boiled Owls of N.Y.
Boiled Owls of N.Y.	7	128 Contest Club
CMARC	8	NIDXA
NIDXA	9	Richardson ARC
Richardson ARC	10	CMARC

1971 ARRL DX COMPETITION

Phone: Feb. 6-7, Mar. 6-7
CW: Feb. 20-21, Mar. 20-21

*Asst. Communications Mgr., ARRL.

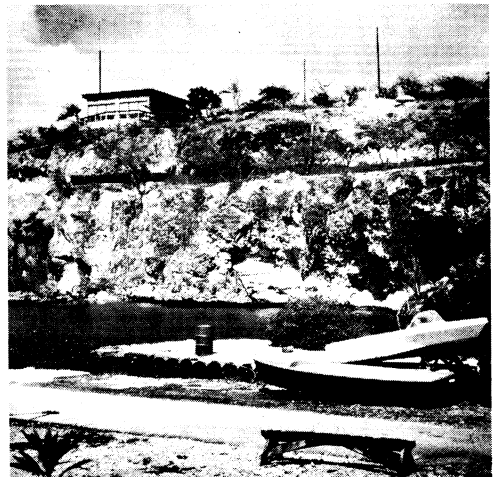
SOAPBOX

Ten meters the best I have heard, eighty very good second weekend but local QRN stopped many QSOs. Still the best DX test there is. - VK2FU, (VK2FZ, opr). Second week was dead. - OX5BL. Great contest, worked a lot of guys on 5 bands. Where was VE8? - KZ5NR. Best contest operators are the boys in 6-land. - KP4AST. My first contest and quite an experience. Worked all States on 10 meters. - KP4CQB. First weekend outstanding conditions, second weekend poor. - KL7GSG. All bands totally useless the weekend of March 7-8. - KL7AIR. For the first time I worked in the contest from my home station, before at UQ2KCR. - UQ2PG. Thanks FB contest. Hope will be more active with our new call sign UK2GAZ in the next year. - UQ2KBP. We all agree that this is one of the greatest contests and we hope to participate again next year. - YU3EY. W/K5s, where were you all? - WA3EEE/KG6. Pileups were fantastic, especially on 15 meters. - CT2AT. I took part in the ARRL DX Test for the first time. - JR1ACP. Most of the time for operating was spent at KA9MF. - KA9RC. In submitting my logs for the 1970 ARRL DX Test I would like to say what fun it was to participate. My only regret is that I couldn't devote more time. It is hoped that your contest was a complete success and I feel sure that the fellowship engendered, despite the extremely short contacts, does much for amateur radio. - A2CAH. Propagation this year was not as good as in 1969 particularly on 9 March after 1930 GMT when all bands were essentially out. On 8 March after 2000 GMT conditions were fantastic on the higher bands, the usual very high noise level here on 80 meters was absent, but so was propagation from the states! - EL2BD. I would like to say that the DX Test has interested me very much and I am very satisfied with the results I got. Be sure that in the next one many of our club will be present. - I1BCL. After 1200 GMT on 7 March I could get nothing through, conditions were as bad as possible. - LA2DL. At the start of the second weekend disaster struck, for the first hour no Ws heard on 20,40 or 80 meters. Five hours later was averaging 6 QSOs per hour. First day produced no 10 meter band opening at all, only a couple of

hours on 15. Second day atmospheric disturbance was so bad that all noise disappeared from the 80 meter band, English and German stations who are usually S9+ were down to S3! - LA0AD. Sorry couldn't spend more time in the phone portion, already had 70 hours planned for the cw portion. - PA0LOU. They used to put people like us away—but thanks to the ARRL DX Test there is a healthy outlet for aggressive tendencies and unleashed frustrations. I'm having the shack padded—er, paneled for next year! -; W3TGF. Since I can't seem to win the contest on the basis of skill, make it four weekends each mode! Then maybe I can beat the competition on the basis of endurance! - W3WPG. Would like to see the Hq. Technical Staff invent an 80 meter QRN squasher. - W3YIK. W3NPZ was the station of W3MSK operated under a different call while Ed was away. QSOed him from SVIAB and SV1AE the first weekend, from VU2MSK the second. - W3NPZ. Almost as much fun as a CD Party. - K2KIR. Finally—a contest for which Murphy's Law was invalid and during which the F2 layer was most cooperative. - K3VXV. Please only one weekend. At 27 I feel like I'm already losing steam. - W9LKJ. Thanks to the many chaps who were patient with us beginners. - WB9BPG. Multiop stations ruin contests. - W9BG. Had to stop test to help stop grass and forest fire first weekend; broke bone in left foot in bathroom fall second weekend. Would rather murphy attacked my rig! - W5IOU. Suggest rest period be added to the rules. - W4LW. Wish I could have operated both weekends. - WA8LYF. Not sure if our promise got KV4AM to go on 28 MHz or not, but the QSO was appreciated and the cookie has been sent. - K8UDJ. Bet we are the youngest multi-op with the highest score—average age is 17. - WA8ZDT. This contest may catch on yet! - W8DB. This contest is too long or I'm getting too old. - W2SUC. Whatever you do, keep it two weekends. - K2BMI. Dipoles still get you places. - WA2HIU. Who says you can't have fun with a piece of pipe and a dipole strung lower than the rig? The only contest I know where everyone wins! - WA2YWR. Forty years ago it was "gung ho;" now it's "ho hum."



PJ9GF, in a one weekend effort, managed 5529 QSOs for a score of over 4 million points! W1BH, shown operating.



-WØEQN. When I finally got ZC4DA, he logged me as WAØWOW. Rats! - WAØWOA. Never pass up a multiplier thinking it will show up the second weekend-it probably won't! - W1FBY. Entirely different ball game from the east coast. - K6OZL/1. Conditions very good. I have taken part in every single one of the ARRL International DX Competitions and enjoyed this one as much as the first. - W1AJO. Conditions on 10 meters were fantastic, the best I have ever heard in a DX Competition. - W1WY. My last operation from Massachusetts. New Hampshire next year. - W1BPW. Fantastic contest, should have one every weekend! - W1JKZ. I did this contest from a motel with just three dipoles. Next year I hope to do it from Wyoming! - W6JHV/7. Tell me how you arranged for such fabulous radio propagation conditions. Are you seeding the layers? - K6MG. Full break-in enabled me to work at least 20 stations that I'm sure I would not have otherwise worked. How did I get along without it for so long? - K5MAT. Never again with a portable call. - W7PU/6. It seems we need an extra multiplier to pick up 160 meter activity. - W5SBX. Got 81 different countries on 50 watts during the two contest weekends. - K5JZY. Conditions very good but a noticeable decrease in "rare" DX. - VE3DBB. Never included the 20 to 30 W/K QSOs in my score. Somebody should tell those guys we're on the same team. - VE8ZZ. Suggest second and third place awards to sections with large number of entries. - K3EUR. Even an old brass pounder like me can enjoy phone with all those goodies available. - W3YJK. Never knew there was

so much good DX on 75. - WA3JKO/3. Horrible conditions the second weekend. A perfect example as to why the contest should be kept two weekends long. - W3MWC. Visited Frankford RC after the second phone weekend. Big sign on blackboard said, "PVRC bought the ionosphere". - W3EZT. Let's go one weekend each test and substitute an IARU sponsored test for our second weekend! - W3BQN. Recommend this contest be one weekend only to encourage DX petitions. - W3PWO. Please no more blackouts. - W2UI. Kept hearing W3FBF in pileups and it finally happened, we worked one in succession. He couldn't believe it. - W2FBF. What about California? What about California? This question came screaming over the air about a dozen times. So, I give up; what about California? - K3CPF. I bemoan the complete changeover to transceive operation by DX phone stations. What has happened to the practice of calling CQ below 14.2 MHz, for example, and indicating a listening frequency in the American band? Contacts could be made much faster. - W3VT. Darn, my advanced came ten days after the contest ended! - WA3JIH. There ought to be a certificate for a good reliable competitor, consistent but never a winner, hi! - W9JJV. Would like to see more South Americans in the contest, also some bonus for contacts on 40 and 80. - WA9WSS. Some of the pileups were unreal but then so were some of the participants. - W9ZBD. My first effort, but I've decided to stop fighting 'em and join 'em - next year I'll be a 9G1. - WA5WUJ. Couldn't get my quad up because it was under the snow in the backyard someplace. -

AFFILIATED CLUB SCORES

Club	Score	Entries	CW Winner	Phone Winner
Potomac Valley Radio Club	52,035,602	62	W4YHD	W4BVV
Frankford Radio Club(Pa.)	49,086,953	74	W3MFW	W3DHM
Murphy's Marauders(Conn.)	26,652,402	57	W1BGD/2	W1BGD/2
Southern California DX Club	25,609,839	60	W6RR	W6RR
Northern California DX Club	21,375,577	62	W6CXY	K6AHV
128 Contest Club(Mass.)	17,698,600	31	K1DIR	K1UHY
Boiled Owls of N.Y.	9,117,867	18	WB2CKS	W2IRV
Northern Illinois DX Ass'n	8,390,903	27	W9LJK	W9BZW
Richardson Amateur Radio Club(Tex.)	6,306,553	21	W5EQT	W5QWF
Central Michigan Amateur Radio Club	6,192,852	11	W8TJQ	K8UDJ
Minnesota Wireless Association	5,640,102	17	WØHP	WØHP
Golden Triangle DX Club	5,473,586	8	W4JDR	W4QBK
Oak Park Amateur Radio Club(Mich.)	5,395,647	10	W8LYF	W8LYF
Niagara Frontier DX Ass'n(N.Y.)	5,374,842	17	K2KNV	K2DJD
Laurentian DX Club(Que.)	4,896,423	11	VE2CQW/2	VE2YU
Indian Hills Radio Club(Ohio)	3,860,262	8	W8QXQ	W8DKI
Overlook Radio Society(N.Y.)	3,836,433	4
South Jersey Radio Association	3,584,387	33	W2FYS	W2EPA
Connecticut Wireless Association	2,865,900	8	W1BIB
Etna Radio Club(Pa.)	2,533,644	8	W3VEQ	K3HZL
West Park Radiops(Ohio)	2,284,686	20	K8CHF	W8IPA
New Providence Amateur Radio Club(N.J.)	1,006,802	10	W2GZZ	W2GZZ
Warren Amateur Radio Ass'n(Pa.)	948,836	6	W8TNO	W8MKE
North Alabama DX Club	936,309	4	K4MG
Colorado DX Association	895,719	8	WØCAW	WØMYN
Ohio Valley Amateur Radio Club	799,329	8	W8JAQ	W8PRR
South Hills Brasspounders & Modulators(Pa.)	744,486	5	WA3KOS
Winnipeg DX Club(Man.)	634,743	7	VE4FU
Kentuckiana Radio Club(Ky.)	634,506	6	K4FXN	K4FXN
Gloucester County Amateur Radio Club(N.J.)	477,948	10	W2SUA
Brightleaf Amateur Radio Club(N.C.)	388,836	6	W4OMW	K4AJR
ARINC Amateur Radio Club(Md.)	323,247	5	WA3YV
Delta Amateur Radio Club(Tenn.)	307,863	4
K-W Society(Ohio)	284,397	4	W8FDC
Northwest Amateur Radio Club(Ill.)	259,008	6	W9GYN
Suburban Amateur Radio Club(Pa.)	225,334	4
Georgia Southern Area ARC	204,636	3
McDonnell Douglas Astronautics Radio Club(Calif.)	101,241	6	K6TXA	K6TXA
Lake Success Radio Club(N.Y.)	94,200	6	W2CZZ	W2TUK
Springfield Amateur Radio Club(Ohio)	74,805	4
Chicago Radio Traffic Association	25,926	4	W9REC

WA8VRB. Massive antenna destruction to our 40 and 20 meter quads kept us out of the cw contest. - K8HLR. VR4BC had such a pileup on him that he was working them by call area and first letter after the number. The WØZ fellas must still be waiting! - WA8QIY. Who but a silly ham would work so hard, with so little, to achieve so little? - W8AJW (who broke 100K with 95 watts of am!). The miserable conditions of the second weekend sure didn't keep the multipliers from appearing—in fact, they never seemed to quit. - WIBGD/2. The sun's eclipse was great on the second weekend, but those unexpected solar flares were something else! Result: poorest weekend band conditions in my experience. - K2BK. The aurora on the second weekend slowed things down a bit. Was strongly tempted to get on 2 meters but decided to stick it out on 21 MHz. - K1AGB. Thank you JA. - K6AHV. I particularly enjoyed increasing my operation on 3.5 and 7 MHz. That's DX! - K4AJR. WE4SUN was a special events station, licensed to operate in connection with the total solar eclipse. - W4DQD.

THIRTY-SIXTH ARRL

International DX Competition

W/VE scores are listed by ARRL division and section; DX scores are listed by continent and country-prefix. Multioperator scores follow single-operator scores within each section or country-grouping.

Awards: The operator of the first-listed *single-operator* station in each section or country is the winner for that area and receives a certificate award. In a section or country from which at least three valid *multioperator* entries were received, the top-scoring station in that category receives a certificate award. (Awards are scheduled for an October 15 mailing. The top-scoring single operator DX entrant for each *continent* each mode, receives an engraved plaque. *Affiliated-Club* awards are shown elsewhere in this article.

Scores: In the list to follow, read (from left to right): *call* of entrant, *final score*, *multiplier* (total countries per band for W/VE; total states and Canadian call-areas per band for DX), *contacts*, approximate dc *power* input (A represents power up to and including 150 watts; B, over 150 and up to and including 500; C, over 500; D, combination of A+B; E, A+C; F, B+C; G, A+B+C and N, no power noted on entry.), *total time* of operation (to the nearest hour). Example: W3NX 594,156-268-739- C-70 indicates final score 594,156, multiplier 268, contacts 739, power over 500 watts, operating time 70 hours.

A single asterisk following a call denotes an ARRL Hq. staff member, ineligible for an award.

QRP CHAMPS (150 Watts or Less at All Times)

CW		Phone	
K5ABV	886,386	WA1DJG	717,880
W1DXB	766,119	VE3BS	544,260
VE3KZ	606,096	W4CRW	401,931
K2BMI	568,347	VE3GCO	291,920
WAØRDJ	536,616	WA3HGV	284,634
W3QOR	521,136	WAØETC	200,475
K2MFY	452,352	W4DQD	150,804
W4WHK	447,228	W1ODY	136,080
W1FTX	439,956	K9HDP	129,054
W2HUG	394,200	W6JPH	123,522

CW SCORES ATLANTIC DIVISION

Delaware		W3CBF	
W3TGF	837,558-237-1178- C78	K3FME	19,500-65-100- B10
W3NX	823,116-287- 956- C68	W3GQC	12,528- 58- 72- E15
W3NNK	580,563-257- 753- C71	WN3MHF	7020- 39- 60- B19
W3DRD	331,059-211- 523- C49	WA3IXF	2580- 20- 47- A25
WA3HGV	56,070-105- 178- A15	W3GHD	2277- 23- 33- C14
W3DPA	49,588- 92- 180- C19	WA3IUV	2268- 21- 36- B 4
		W3GM (7 oprs.)	1026- 18- 19- B
		W3WJD (+W3YUW)	5,546,520-465-3976- C96
		W3MWC (+K3s JLI JLK)	3,483,402-426-2741- C96
		W3OV (+WB2ZDR)	1,941,654-341-1898- C90
		W3KT (+WA3ATX)	1,318,746-286-1537- C75
		W3BIP (+WA3s JYB LA)	1,296,873-309-1399- C96
		W3AES (+W3SS)	806,265-285- 943- F94
			702,999-263- 891- C50

Eastern Pennsylvania

W3MFW	1,497,888-336-1486- E72	W3GRF	1,657,308-334-1654- C75
W3WPG	1,475,910-310-1587- C91	W3MVB (WA3LKH, opr.)	1,334,880-309-1440- C90
K3HTZ	1,348,095-347-1295- C95	W3EYF	779,382-283- 918- E72
W3NZ	933,866-271-1154- C78	W3MFJ	762,552-238-1068- C61
K3WJV	835,275-259-1075- C82	W3AXW	643,808-248- 868- C73
K4WUY/3	726,750-285- 850- C62	W3QQL	551,702-223- 826- B60
K3EUR	700,350-230-1015- C75	W3GN	379,848-196- 646- C40
W3YIK	676,728-241- 936- C65	W3BQN	341,901-201- 567- G63
WA3LB	527,850-230- 765- N69	W3FU	280,899-177- 529- D40
W3QOR	521,136-231- 752- A58	WA3GVP	270,200-200- 455- C73
K3AIG	513,000-200- 855- C57	WA3JYV	155,628-131- 396- A45
WA3LNM	504,306-198- 849- C86	WA3BGC	142,920-120- 397- F58
W3GRS	384,000-256- 500- C	K3KHK	139,077-101- 459- A43
W3ARK	356,535-171- 695- A45	W3HVM	111,069-129- 287- C25
W3AIZ	342,495-177- 645- B34	W3KMV	105,336-114- 308- C60
WA3HOM	330,576-194- 568- B70	W3YSH	95,904-144- 222- C38
W3BYX	218,514-158- 461- C	WA3NGL/3	72,384-116- 208- F40
W3QLW	166,254-12- 458- B53	W3LMZ	69,300-105- 220- B28
W3GID	165,474-174- 317- C41	W3FA	63,648- 96- 221- B12
K3TGM	147,375-125- 393- C37	W3FSR	49,128- 92- 178- F28
W3CGS	147,204-141- 348- C31	W3EPR	35,910- 95- 126- B23
W3KFK	129,159-113- 381- C29	W3RYV	35,784- 84- 143- A57
WA3MIB/3	123,136-128- 322- B43	W3EKZ	26,270- 71- 126- A26
W3EAN	96,798- 73- 442- C25		
WA3JKO/3	93,312-128- 243- A25		
W3EOA	81,320- 95- 288- C19		
W3YQ	75,130-110- 229- A33		
K3RDT	57,132- 92- 207- A24		
W3EOP	39,960- 74- 180- C28		
W3EVW	39,114- 82- 159- E		
WA3HMM	37,440- 65- 192- B17		
W3HMR	34,710- 65- 178- C23		
K3NPC	33,396- 92- 121- A19		
WA3KLS	24,616- 68- 121- A17		

Maryland-D.C.

W3GRF	1,657,308-334-1654- C75
W3MVB (WA3LKH, opr.)	1,334,880-309-1440- C90
W3EYF	779,382-283- 918- E72
W3MFJ	762,552-238-1068- C61
W3AXW	643,808-248- 868- C73
W3QQL	551,702-223- 826- B60
W3GN	379,848-196- 646- C40
W3BQN	341,901-201- 567- G63
W3FU	280,899-177- 529- D40
WA3GVP	270,200-200- 455- C73
WA3JYV	155,628-131- 396- A45
WA3BGC	142,920-120- 397- F58
K3KHK	139,077-101- 459- A43
W3HVM	111,069-129- 287- C25
W3KMV	105,336-114- 308- C60
W3YSH	95,904-144- 222- C38
WA3NGL/3	72,384-116- 208- F40
W3LMZ	69,300-105- 220- B28
W3FA	63,648- 96- 221- B12
W3FSR	49,128- 92- 178- F28
W3EPR	35,910- 95- 126- B23
W3RYV	35,784- 84- 143- A57
W3EKZ	26,270- 71- 126- A26



Members of the LAURENTIAN DX CLUB at a recent meeting. They are, L to R, VE2AQQ, Steve; VE2IZ, Dennis; VE2DCW, Dave; VE2WY, Ross; VE2YU (now VE3HD), Ernie; VE2WA, Graham and VE2NV, Jack.

W3CSZ 20,532-58-118-B 8	W2FUI 34,884-76-153-A84	W9KTB 24,192-56-144-A	DAKOTA DIVISION	
W3HH 18,954-54-117-B11	W2SSC 33,516-98-114-C10	WA9ZQG 24,000-64-126-C19	Minnesota	
W3WVO 15,730-55-96-B27	W2ICO 13,680-57-80-A12	W9REC 19,497-67-97-B	1,268,820-285-1484-C	
W3KE 12,054-49-82-C 4	W2UJ 11,338-57-78-N17	WA9SQY 19,293-59-109-B	649,215-522-945-E71	
K3KMA 7830-45-58-B 9	W21CU 11,366-49-78-A17	W9MIR 18,360-40-153-C15	506,853-199-849-C64	
WA3LYH 1458-18-27-A 3	WA2OEU 11,388-52-73-B 5	W9MIR 14,136-38-124-B26	404,142-193-698-C	
W3NPZ (10 oprs.)	W2FXA 10,974-59-62-C12	WA9EKJ 13,005-51-85-A11	374,532-177-706-C42	
6,597,675-497-4464-E96	W921YQH 8874-51-58-C12	W9DRN 10,032-44-76-C30	340,887-199-571-B	
K3JYZ (8 oprs.)	WA2BEX 8550-50-57-A 9	W9N2S 6900-46-50-A10	358,479-187-639-C37	
3,060,090-363-2810-C96	WA2ECM/2 8190-39-70-C11	W9B9BCR 6438-37-58-A20	340,887-199-571-B	
K21VB/3 (+WA2SLE, WB4NGR)	WA2AIV 2106-26-27-B 9	W9HPG 5472-32-57-A14	287,655-151-635-A73	
1,063,584-288-1231-F75	W2TMI 2046-22-31-A	W9TUC 2886-26-37-A18	178,502-149-402-C54	
W3TOS (+WN3MLL)	WB2EQR 663-13-17-B 3	K5LQJ/9 2400-25-32-A15	172,890-153-377-C28	
22-032-54-136-D19	WA2DHS (+WA2BCK) 190,854-138-469-B54	WA9UOT 1349-19-24-A11	119,349-149-267-F34	

Southern New Jersey			Western Pennsylvania		
W2BQF 1,189,656-328-1209-C74	W3WU 1,619,568-368-1475-C69	W9DYL (5 oprs.) 258,060-220-391-C28	Indiana		
K2QIL 726,270-215-1126-C65	W3VIT 1,439,949-359-1337-C80	W9DWDQ (multiop.) 244,500-163-500-C	W9IOP 1,755,990-327-1790-C93		
W2FY5 503,757-223-753-E70	W3VEQ 847,440-264-1070-C70	W9EXE (+W9ICE) 18,291-67-91-C21	W9CJUY 929,600-280-1112-C88		
W2UI 279,864-156-598-B60	K3HZL 399,024-204-652-C60	WA9VOL (+W9DY) 17,280-48-120-C 6	K9DVK 346,968-183-632-F44		
W2SDB 213,943-151-501-B55	WA3KOS 274,758-181-506-A35		K9HDP 288,840-166-580-A7		
W2XGL 226,114-166-428-E67	K3VXV 267,288-172-518-D47		W1DRN/9 51,300-95-180-A24		
W2FBF 173,010-158-365-B29	W3PZC 265,200-170-520-C35		K9VQK 43,032-88-163-A49		
W2DT 170,307-149-381-C	K3OTY (WA3JH, opr.) 323,052-158-498-C36		K9UBF 14,784-44-112-D18		
WA2BLV 154,290-139-370-C	W3UT 175,086-142-411-B37		WA9UFO 8694-42-69-A18		
W2FHY 37,350-83-150-B49	WA3JGY 158,148-138-382-B54		W9B9ER 4410-30-49-C22		
WA2FVU 32,163-71-151-B40	W3VK 106,425-129-275-C39		W9YTB 1134-18-21-A10		
W2QKJ 30,654-78-131-C40	W3ESU 38,098-86-148-A17		W9YB (WB2RKK+WA5BRB +WA9ZML) 524,250-233-750-E62		
WA2VYA 27,477-71-130-A35	W3QEI 19,883-59-113-A25		WB9BPG (4 oprs.) 135,792-164-276-B69		
K2QPN 23,175-75-103-C	WA3MJQ 15,582-42-125-D10		Wisconsin		
W2EBW 16,974-46-123-B22	W3YX 3627-31-39-C18		W9RQM 938,250-278-1125-C71		
WA2HJF 10,608-52-68-A 7	W3DKL 741-13-19-B 5		W9GIL 772,668-254-1014-C78		
W2HAZ 8910-45-66-A10	W3TJ (4 oprs.) 2,655,192-349-2536-C60		W9IHN 501,216-227-736-C62		
WB2WAK 7344-36-68-B	8232-42-68-A48		K9DKU 642,644-217-712-C47		
W2EPA 6840-30-76-C 6			W9BG 414,230-230-601-F44		
WA2IUF 1920-20-32-B 6			W9VZP 405,600-169-800-C52		
WB2WRP 264-8-11-A 1			W9SDK 301,716-174-578-C47		
WA2BPL 27-3-3-A 1			W9PIT 167,832-148-378-D43		
K2SQS 18-2-3-A 1			W9HE 145,080-130-372-A35		
WN2JH 3-1-1-A 1			W9EZ 131,520-137-320-A20		
WA2IZS (+K2CPR, W3KVO) 1,226,550-325-1258-C96			W9OW 99,303-79-425-C41		
WB2ZPB (+WA2BPL) 636,000-265-800-B63			WA9VCK 35,040-73-160-B21		
W2PAU (+W2ESX) 570,622-221-864-C68			W9YEG 13,050-58-75-A17		
K2AA/2 (W2FYS+WB2WRP +W3CXO) 37,074-74-167-G23			W9LAX 11,289-53-71-C 7		

North Dakota			South Dakota		
WA9EOZ 69,216-103-224-B25	WA9OML 90-5-6-C 7	DELTA DIVISION			
W9AAB 22,848-64-119-C13	K9VYV (W8KB, WA9QCC) 633,061-247-855-C	Arkansas			
WA9AAD 20,250-54-125-A15	WA9CPY (+WA9 CPX YAK) 408,954-214-637-C92	WA5SOG 170,839-137-417-B41			
		W5DRW 92,418-146-211-F24			
		W5RUH 36,540-87-140-A46			
		Louisiana			
		W5IOU 1,171,734-358-1091-C90			
		W5WU/5 1,010,394-297-1134-C90			
		W5KSC 536,316-239-748-C50			
		W5MDH 271,950-185-490-F54			
		W5OB 260,610-170-511-C81			
		W5VQE 11,550-55-73-A30			
		K5BLV 9000-40-75-A13			
		Mississippi			
		W5RUB 663,780-230-962-C64			
		W5MUG 76,890-110-233-B25			
		W5AO 56,940-130-146-C29			
		Tennessee			
		W4NBV 853,065-267-1065-F80			
		K4PIZ 848,190-245-1154-C65			
		W4DMS 724,626-243-996-B70			
		K4FW 560,672-224-841-N70			
		WA4FDR 249,780-181-460-E26			
		W4EWR 100,548-114-294-B29			
		W4ZWZ 17,424-48-121-B24			
		W4QG 11,193-41-91-A12			
		WB4KWT 396-11-9-F 2			

CENTRAL DIVISION					
Illinois					
W9LKI 1,609,830-310-1731-C67	W9RQM 938,250-278-1125-C71	Wisconsin			
K9BGL 952,295-283-1123-C81	W9GIL 772,668-254-1014-C78	W9RQM 938,250-278-1125-C71			
W9OHH 695,040-256-905-C	W9IHN 501,216-227-736-C62	W9GIL 772,668-254-1014-C78			
WA9IVL 664,125-275-812-C70	K9DKU 642,644-217-712-C47	W9IHN 501,216-227-736-C62			
W9WYB 428,352-194-736-C	W9BG 414,230-230-601-F44	K9DKU 642,644-217-712-C47			
K9YDI 365,580-180-677-B	W9VZP 405,600-169-800-C52	W9BG 414,230-230-601-F44			
W9QQN 276,000-184-500-C60	W9SDK 301,716-174-578-C47	W9VZP 405,600-169-800-C52			
W9AG 269,361-173-519-C49	W9PIT 167,832-148-378-D43	W9SDK 301,716-174-578-C47			
WA9WJS 120,546-111-362-B37	W9HE 145,080-130-372-A35	W9PIT 167,832-148-378-D43			
W9Y9Y 113,458-71-566-C30	W9EZ 131,520-137-320-A20	W9HE 145,080-130-372-A35			
W9GYN 101,706-134-253-A40	W9OW 99,303-79-425-C41	W9EZ 131,520-137-320-A20			
W9GB 88,920-104-285-C22	WA9VCK 35,040-73-160-B21	W9OW 99,303-79-425-C41			
W9FT 85,176-104-273-C28	W9YEG 13,050-58-75-A17	WA9VCK 35,040-73-160-B21			
W9VB 69,420-89-260-C15	W9LAX 11,289-53-71-C 7	W9YEG 13,050-58-75-A17			
W9E 46,236-106-202-A38	WA9ZWL 10,368-48-72-B 7	W9LAX 11,289-53-71-C 7			
W9IB 46,856-92-206-C21	WA9RT 10,290-49-70-A 6	WA9ZWL 10,368-48-72-B 7			
W9MT 45,368-92-168-B30	W9AEM 8424-39-72-D	WA9RT 10,290-49-70-A 6			
WA9EWZ 43,320-95-152-B33	W9TXF 6384-38-56-B14	W9AEM 8424-39-72-D			
W9QVM 40,908-84-164-A33	WA9UEK 1953-21-33-B29	W9TXF 6384-38-56-B14			
W9EYB 38,700-75-172-A35	WN9ZJE 288-8-12-A11	WA9UEK 1953-21-33-B29			
K9QUON 31,680-64-165-C15	W9YT (7 oprs.) 2,670,055-379-2349-C96	WN9ZJE 288-8-12-A11			
W9JUV 29,403-81-121-C10		W9YT (7 oprs.) 2,670,055-379-2349-C96			
W9BZV 29,154-86-113-C24					

DIVISION LEADERS					
CW		Phone			
<i>Single Op.</i>	<i>Multiop.</i>	<i>Single Op.</i>	<i>Multiop.</i>	<i>Single Op.</i>	<i>Multiop.</i>
K2KIR	W3NPZ	Atlantic	K2DJD	W3ZKH/3	
W9IOP	W9YT	Central	K9CUY	W9LKI	
W9HP	W9AIH	Dakota	W9HP	WA9CPX	
W5IOU	Delta	W5IOU	W5WUJ	
K4GSU	K8UDJ	Great Lakes	K8UDJ	K8HLR	
W1BGD/2	K2AHQ	Hudson	W1BGD/2	K2UQT/2	
WA9RDJ	K9MKD	Midwest	K9RNZ	WA9QJX	
K1DIR	WA1JUY	New England	K1THQ	W1MX	
W7RS	W7RM	Northwestern	W7RS	W7EXM	
W6CYX	K6EBB	Pacific	K6AHV	W6YRA/7	
W4YHD	W4BVV	Roanoke	W4BVV	K4CG	
W5EU	Rocky Mt.	W5EU	K7RAJ/7	
W4JDR	W4ZXI	Southeastern	W4QBK	K4LK	
W6RR	W6VSS	Southwestern	W6RR	W6TEZ	
W5JAW	WA5RXT	West Gulf	W5JAW	W5KUC	
VE2DCW/2	VE5US	Canadian	VE7BDJ	VE3EVZ	

GREAT LAKES DIVISION					
Kentucky					
K4GSU 1,811,596-353-1712-C78	W4LW 387,150-178-725-C62	Michigan			
K4FXN 213,408-152-468-F39	W4JBQ 144,024-136-353-C33	W8VSK 1,802,250-375-1602-C77			
K4FU 89,270-158-189-A42	K4KI 74,700-100-249-B30	W8LYF 1,025,418-298-1147-C42			
K4BAM 3510-26-45-A 8		W8AJUN 870,102-246-1179-C70			
		K8RCT (WB8BTU, opr.) 521,181-199-873-C49			
		W8DA 377,055-189-665-F51			
		W8TJQ 376,461-191-657-B58			
		W8DQL 239,145-149-535-C30			
		W8BDKZ 151,200-120-420-B13			
		W8SH (WA3GBU, opr.) 135,474-134-337-C31			
		W8BCE 100,368-123-272-B50			
		W8VUU 92,454-114-277-B27			
		W8BAAX 59,130-90-219-D16			



The above represent but a few of this years Top Ops. They are, (L to R, top to bottom); KP4AST, PJ2VD, CT2AT, KH6SP, XEIKS, K2K1R, WA9RAT/HR2, LA0AD, YV5KL and K1NOL.

Minimums	30	50	80	70	70	Minimums	30	50	80	70	70	Minimums	30	50	80	70	70	Minimums	30	50	80	70	70
Band	80	40	20	15	10	Band	80	40	20	15	10	Band	80	40	20	15	10	Band	80	40	20	15	10
KIACB				104		WA2UJM	31	64	59	41	74	W4DMS	13	21	63	73	73	K8UDJ*	54	86	119	106	83
KIDIR	46	67	105	87	83	WB2CKS	45	63	72	84	75	W4DUQ	3	46	80	81	62	WB8DO	36	38	19	1	39
KIDKX	8	38	82	59	42	WB2ZPB	15	37	86	65	62	W4DXI	3	21	59	64	70	WB8BQV	3	26	86	63	58
KIHFV	8	42	29	78	12	WB2BD/2	46	67	90	80	83	W4EIO	50	65	90	85	70	WB8T	35	39	83	53	53
KIHFJ	39					VE2MWB/W2	32	55	84	62	63	W4EJZ	18	25	58	77	50	WB8DB	25	50	74	74	76
KI1HX	28	57	64	73	71	K3HTZ	55	62	81	74	75	W4IDR	44	57	90	70	70	WB8GMX					
K1NOL	46	60	96	83	79	K3JYZ*	20	66	104	91	82	W4KFC	36	63	85	72	75	WB8QXQ	33	57	102	87	70
K1THQ	34	52	68	74	62	K3KHC			101	1	12	W4KXV	32	53	76	68	70	WB8YSK	9	52	109	104	101
K1UDD	30	52	62	59	51	K3NPK	30	16	16	17	13	W4WS			87	5	1	W8LYF	27	68	105	76	62
K1VTM	20	55	71	70	66	K3WJV	34	40	61	64	60	W4YHD	38	66	93	90	81	W8AQY	3	33	71	56	71
W1AX	43	52	63	51	58	W3AES*	25	54	55	74	55	W4ZJI	62	82	105	96	84	W8ARCN	20	57	65	76	76
W1BIB	44	55	89	73	77	W3BIP*	25	48	70	76	66	K5ABV	9	48	71	83	80	W8ARTO	30	30	71	70	69
W1BFW	49	65	82	77	73	W3EOP	74					W5AO	13	59			58	W88ZDT*	23	53	88	71	70
W1CW	64					W3EYF	19	42	82	73	67	W5GO	32	75	72	65	65	K9BLG	30	50	70	73	60
W1DIT	31	53	55	37	34	W3GM*	68	87	113	103	99	W5IOU	56	64	85	77	76	K9CULY	25	52	72	68	63
W1ETU	32	50	68	68	67	W3GRF	41	67	79	74	77	W5JAW	32	65	97	84	83	K9DKU	2	11	62	72	87
W1FBY	31	34	82	72	71	W3GRS	9	36	81	68	69	W5KYD	2	52	83	31	31	W9BG	20	22	85	57	69
W1FJF	42	26	75	75	76	W3KTF	28	60	77	74	77	W5SBX	33	50	46	62	20	W9BZW	40	13			33
W1FNW	26	55	47	70	32	W3MFW	54	58	71	78	77	W5WU/S	36	54	62	70	75	W9DY*	6	54	46	65	48
W1SWX	73					W3MVB	30	66	77	70	72	W5WZQ	33	75	90	79	79	W9EXE*	30	37			
W1T5	15	26	70	73	59	W3MWC*	38	64	79	79	81	W5XRT*	9	38	74	69	72	W9EJZ			28	39	70
W1WAI	33	47	79	65	60	W3MNC*	32	42	55	64	64	K6AIV	23	78	65	76	69	W9GCB	3	52	63	70	66
W1WY	45	63	86	80	75	W3NPZ*	47	63	89	89	80	K6CIC	6	57	80	62	43	W9IOP	12	50	104	80	76
W1YK	45	63	86	80	75	W3NU	47	63	89	89	80	K6EBB*	32	76	119	99	79	W9LJK	18	35	93	84	80
W1DJG	24	45	72	75	68	W3NX	31	55	64	65	72	K6SDR	11	38	48	27	78	W9OHX	5	27	81	73	70
W1FHU	37	63	74	79	66	W3NZ	34	54	61	61	61	K6SXA	23	32	84	73	66	W9YQM	18	41	73	75	71
W1AIR	36	56	84	68	66	W3OV*	24	51	77	64	70	W6KJYC	21	48	77	83	61	W9RMB	10	36	58	72	57
W1JTM	30	64	72	70	68	W3QOR	15	32	52	70	72	W6KVOQ	21	48	77	83	79	W9YTT*	43	63	97	94	82
W1JUV*	30	60	86	86	60	W3QQL	29	52	71	71	71	W6KANN*	35	59	102	83	78	W9YYG					
K2AHQ*	30	54	65	66	30	W3TVM	34	58	91	84	87	W6KBH	56	79	72	72	72	W9AIVL	14	37	79	78	67
K2DJD	27	53	84	78	75	W3TVM	43	63	92	89	89	W6KBP	12	30	82	55	53	K9EKR	30	30	48	82	69
K2KIR	50	57	82	86	80	W3WJD*	60	84	101	98	98	W6KCYX	17	37	81	71	66	W9AIIH*	21	58	94	71	58
K2KNV	30	66	90	79	70	W3WPG	47	54	69	68	68	W6DGH	20	42	76	77	69	W9BE	36	24	32	38	19
W2AJR	35	55	86	2	156	W3YJK	22	39	51	72	57	W6HOC	9	52	70	67	60	W9BX	18	52	63	43	54
W2BQF	41	54	80	83	73	K2JVB/3*	17	58	69	75	69	W6ITY*	15	58	95	78	80	W9CAW					
W2CWF	25	50	63	47	47	K4WUJ/3	26	44	82	68	68	W6MRR	20	42	72	77	68	W9CQC	10	56	60	72	
W2DXL	42	58	79	82	73	K4BAJ	32	57	79	76	80	W6RR	20	42	72	77	68	W9HPH	25	63	70	63	64
W2FR	48	51	54	45	56	K4CAC	21	51	42	34	25	W6VSS*	48	78	123	96	80	W9GCVS	16	37	37	81	57
W2GGE	36	65	80	77	71	K4CX	50	78	97	102	87	W6HRS*	6	40	81	64	64	W9IAV	38	37	46	43	49
W2LXK	45	77	60	60	59	K4EY	16	39	66	78	67	W6IVN*	19	52	78	83	70	VE2DCW/2	47	71	76	71	66
W2PCJ	33	54	86	73	74	K4FXN	5	30	76	41	74	W6BJO*	16	42	80	68	65	VE2VA	20	40	89	67	68
W2SSC	32	30	14	4	18	K4GSU	38	70	90	81	74	W7DI	26	61	75	76	76	VE2YU	29	49	81	68	73
W2WD	28	51	79	79	66	K4HI	47	61	76	79	81	W7IR	16	69	99	86	78	VE7BDJ	21	37	81	68	60
W2WZ	37	56	78	67	69	K4PQL	34	58	73	70	73	W7RM*	51	83	114	108	91						
W2YT	42	53	54	63	64	K4THA	39	57	101	74	66	W7TFD	31	95	81	80	75						
W2BCT	30	33	27	39	32	K4TIG	40	56	77	84	84	K8EHU	30	46	90	80	67						
WA2DPT	21	40	63	71	58	K4TIG	40	56	77	84	84	K8NMG	37	13	43	21							
WA2HU	5	55	87	62	28	W4BIV*	65	95	128	109	91	K8RMK	27	51	81	75	69						
WA2JZS*	28	52	82	84	79	W4BYB	4	91	2	17	37												

* Multioperator Station

W8EW	51,300-76	225-E18	W8YAH	80,682-119	226-B38	New York City - Long Island	W2NBP	184,680-163	380-A27		
WB1WN	49,720-88	189-B60	W8MKE	79,235-115	231-C	WB2CKS	1,702,458-339	1693-C81	W2BHM	162,842-186	299-C25
WB2EM	39,144-84	156-B22	K8NMG	71,250-114	209-B	W2GGE	1,621,641-329	1647-C77	W2HL	132,624-144	307-C24
WB2ZZ	34,348-92	173-B16	W8ZCO	70,902-117	202-C1	W2PCJ	1,341,120-320	1397-C76	WAB2BT	114,954-161	238-G28
WB3YU	34,268-96	121-A27	W8GMK	60,135-95	211-B28	W2WZ	1,019,250-302	1125-C58	WB2WID	106,200-118	300-F
WBHXZ	33,600-90	160-B16	W8DZG	54,315-85	213-C27	W2LXK	932,799-301	1033-F70	W2YFM	60,610-95	214-B28
K8BDE	27,885-65	143-E10	W8WGM	49,140-78	210-B54	W21RX	658,560-245	836-C60	WB2GGO	32,160-67	160-D24
WB8BZG	18,900-50	126-A 6	K8KRN	37,152-86	144-E18	W21RV	650,712-244	766-C45	WAB2JNQ	29,779-77	131-A16
WB8SJS	17,019-61	93-B11	W8FRM	36,936-76	162-C20	W2SUC	560,440-256	630-C33	W2SE	28,608-64	149-C20
W8CXP	13,197-53	83-C	W8ICF	34,749-81	143-B30	W2MZY	452,352-192	844-A60	K2KHR	26,448-76	116-C11
WB8VZK	6222-34	61-B	W8MVV	30,900-75	138-A19	K2AYJ	241,173-211	381-C42	W4BDB	20,196-68	99-A11
W8JUL	5775-33	59-F 9	K8SIU	28,329-71	133-B19	W2MT	126,588-137	308-A26	W2LKH	11,772-54	73-A15
W8EGI	4284-34	42-F 4	W8BBOR	27,945-69	135-B24	W2AEO	106,675-115	315-A60	W2YWR	10,101-39	87-B 8
K8TDJ	1827-21	29-A 4	K8TVO	26,							

K0ARS 18,827-67- 95-A-9 WA9WAO 9350-50- 63-B13 WA9ZLU 4371-31- 47-A19	W1KIE* 8190-35- 78-C-3 W1A1AA 6264-36- 58-B20 W1WIEG 5460-35- 52-B-7 W1A1JZC 2700-27- 34-B14 W1AHNR 684-12- 19-A-1 G3XPM/W1 60-4- 5-A-2 K1GUD (+W1FLM) 500,976-196- 852-C60	W1DXB 766,119-263- 971-A78 W1S1WX 53,217-73- 243-B-8 W1A1JSD 9512-41- 79-B18 W1A1KTX 2016-24- 28-A10	Washington W7DYQ 294,240-160- 613-E64 W7WNP 180,194-122- 493-C36 W7GYF 84,600-120- 235-A16 W7EZZ/W7 73,014- 86- 283-A28 W7IEU 72,072-104- 231-A58 W7YTN 48825-105- 155-B63 W7QTN 24,824-67- 124-C26 W7A7GYR 21,150-47- 150-B20 W7WMY 18,972-51- 124-B14 W7F1M 2415-23- 35-C10 W7AKQK 545-2- 9-A-3 W7RM (8 oprs.) 5,918,022-451-4599-N W7DA/7 (WA7s IZO MJJ) 62,640- 80- 277-A36
NEW ENGLAND DIVISION			
Connecticut		Eastern Massachusetts	
W1FBY* 1,444,200-290-1660-C63 W1B1H 1,391,208-338-1372-C66 K1THQ 1,373,730-290-1579-C75 K1JHX 1,353,660-293-1540-C64 W1ETU* 1,285,065-285-1503-F69 K1VTM 1,252,080-282-1482-F78 W1A1DJG 1,243,352-284-1462-F69 W1A1JQ/1 865,500-250-1154-C73 K1UDD 615,696-254- 808-G40 W1TS 500,094-243- 686-B54 K1DFB 480,732-194- 826-C57 W1FTX 439,956-242- 606-A65 K1ASJ/1 439,878-167- 887-B82 K6OZL/1* 413,100-204- 675-C40 W1A1JD 355,833-207- 573-A50 W1DIT 349,230-210- 555-A41 W1OR 324,864-188- 576-C60 W1AJO 314,028-183- 572-B31 W1ODY 241,566-163- 494-A4 W1GNR 197,055-151- 435-B65 W1CNU 196,911-143- 459-A85 W1VQ* 180,780-131- 460-F24 WA9HHH/1* 128,592-141- 304-F24 K1OKR (WA1JZC, opr.) 92,988-108- 287-B23 73,041-97- 251-B30 72,885-113- 215-F8	K1DIR 2,101,020-388-1805-C83 K1NOL 1,997,372-359-1836-C85 W1BWP 1,568,418-346-1511-C58 W1AIRG 1,491,720-310-1605-C80 W1AFHU 1,412,532-319-1476-C84 W1A1W 1,127,196-284-1327-E64 W1F1J 979,020-294-1110-C56 K1HVV 417,261-169- 823-C W1AX 410,112-267- 512-C20 W1FNW 366,390-230- 531-A74 W1EHT 288,864-177- 544-B40 K1AGB 200,928-104- 644-C49 W1AJZC 194,856-138- 471-D53 W1BQL 102,414-117- 291-C43 W1F1Q 71,136-104- 232-B41 K1OME 61,509-101- 203-B15 W1EKH 29,925-75- 133-A K7JRE/1 25,461-69- 123-A17 W1F1N 21,420-70- 102-D-7 W1PLJ 8280-36- 77-B15 W1NYA 6042-38- 53-B13 W1AIRY 1560-20- 26-B-5 W1MLMM 1275-17- 25-A-7 W1N1MQ 1035-15- 23-A-3 W1A1JU (W1ARR, WA1s CQW GFJW) 1,062,934-262-1354-C86 W1MX (4 oprs.) 371,496-184- 682-C60	Rhode Island W1AWE 59,400-90- 220-N W1AM 19,296-48- 136-C11 W1VPY (WA1CK1+W2ECT +WA2LBT) 314,148-188-557-B47	Vermont W1ZW 313,140-170- 614-C37 W1PEG 93,744-126- 250-B60
WESTERN MASSACHUSETTS			
W1YK (WA1ABW, opr.) 1,700,328-349-1624-E76 K1DKX 672,115-229- 979-C68 W1EZZ 514,488-221- 776-A52 W1AFBX 40,824-84- 162-C24 W1HRV 6786-39- 58-B-8 K1KNQ 2730-26- 35-C-2			
NORTHWESTERN DIVISION			
Idaho W7DV 338,376-184- 613-C34			
Montana W61HV/7 227,735-155- 479-C50 K7CTI 210,600-180- 390-C35 K7ABV 88,725-91- 325-C16 W7GKF 15,984-37- 144-A13			
Oregon W7RS 477,015-245- 649-C33 W7DCR 93,765-95- 329-B57 W7ULC 73,536-95- 258-B40 W7TCGR 64,584-92- 234-B30 W7PJC 4624-34- 46-C-8 WA9WIE/7 2346-17- 46-D12 W7AKRH 120-4- 10-B-1 W7AJAV (+WA7IAW) 24,168-53- 152-B33			
Maine W1MNM 196,812-154- 426-C40 K1GAX 34,560-80- 144-C18 W1PAJ 14,625-65- 75-B18			
New Hampshire W1A1JTM 831,440-304- 916-C61			

PACIFIC DIVISION			
East Bay K6AHV 1,009,680-280-1202-C61 W6BH 543,996-207- 876-C K6QW 322,830-170- 633-C40 W6A1QM 201,345-155- 433-C45 K6TWT 95,424-112- 284-C27 K6JBT 47,880-76- 210-C30 W6RGG 9408-49- 64-C-8 W6EJA 6831-33- 69-B10 W6RQZ 5694-26- 73-N W6PAN/6 48-4- 4-B W6BTOJ (K6PJV, W6Bs HDH QJD) 1,165,029-271-1433-C96 W6KG (+W6DOD) 642,675-209-1025-C40 K6AN (+K6AUC) 610,488-244- 834-C80 W6MAV (+WA6s IQM VAT) 112,617-129- 291-C20 WA6TNN (+W6IAM) 2970-15- 66-C-8			
Sacramento Valley W6NKR 358,092-203- 588-C62 K6RN 269,325-175- 513-B48 W6HB 90,506-118- 257-C30			

Minims Band	15	30	80	70	70	Minims Band	15	30	80	70	70	Minims Band	15	30	80	70	70	Minims Band	15	30	80	70	70
K1AGB				100		WB2OEU	31	20	19	37	69	K4TTA	16	33	81	79	66	W6TEZ*	8	37	74	64	17
K1IKN	23	29	70	66	53	WB2SQN	3	24	97	84	64	W4BTV	32	50	90	94	85	WB6UDC	11	32	51	60	66
K1KNO	20	35	75	88	70	WB2IDQ*	1	35	89	83	62	W4BYW	19	63	7	40	15	WB6KOT*	10	36	72	62	58
K1THQ	36	38	88	89	82	WB2LJU	20	35	32	40	25	W4RWB	4	22	48	32	70	W7RAJ/7*	23	32	69	74	34
K1UHY	36	37	89	92	82	WB2YQH	12	20	58	79	69	W4DFK	13	17	59	74	62	W7RS	12	17	96	93	64
K1VTM	18	37	70	90	62	W1BGD/2	30	33	102	101	70	W4EDM	25	36	62	72	50	W6YRA/7*	17	31	61	63	65
W1CKA	27					WA3BZA/2	4	26	49	52	80	W4E4Z	12	8	53	48	70	K8HLR*	42	64	118	109	84
W1DIT	18	28	22	21	19	WA3HRV/2	24	30	80	70	70	W4FCJ	18	25	62	66	57	K8IDE	4	9	36	71	47
W1DID						K3EUR	17	9	59	81	77	W4JDR	15	25	74	70	73	K8MMH	4	16	16	16	77
W1ESN	24	82	65	51	61	K3HTZ*	37	46	76	65	77	W4JLR	23	39	92	73	71	K8UDJ	34	50	88	91	80
W1ETU	20	36	53	66	60	K3HZL	14	37	76	74	77	W4JLB	15	25	74	70	73	W8BDO	23	37	45	24	36
W1FBY	14	28	80	72	59	W3ADO*	18	52	97	79	81	W4JDR	23	39	92	73	71	W8IC8/8*	8	30	78	81	74
W1FJY	27	8	72	66	74	W3AXW	14	24	72	75	69	W4QBK	15	44	103	89	78	W8IPA	11	28	76	71	74
W1MX*	17	20	64	69	34	W3BQN	6	36	57	57	70	W4VAN	27	22	61	65	58	W81FD					
W1UYU	16	22	62	60	49	W3BYX	6	67	67	76	76	W4WFS	17	22	61	65	58	W8LXU	13	38	83	81	76
W1YK	37	39	83	74	75	W3CRE	1	16	65	76	44	W4WWD	22	33	92	100	91	W8NGO*	7	47	90	77	61
W1A1DJ	20	22	81	76	75	W3DHM	15	31	69	69	78	W4ZCY	9	27	76	77	34	W8TWA	13	33	75	62	58
W1AFBX	6	24	76	75	76	W3E2T	26	20	63	79	79	W44FW	20	27	64	99	68	W8AQIY	7	23	22	33	87
W1A1HQ	1	8	94	76	48	W3GM*	51	63	121	119	109	W44UXU	20	27	64	99	68	W8RRVJ	9	30	72	70	54
W1A1JU	2	19	67	71	7	W3GRS	17	11	60	59	62	WB4QDM*						W8RWW					
W2NSD/1						W3KDD	100				100	WB4KWT	2	10	56	70	49	K9BGL	20	34	70	70	69
K2BK*	17	22	46	46	24	W3KMN	30	37	61	61	62	W5EQT*	9	15	80	73	60	K9CUY	25	42	87	70	64
K2BPP	20	29	63	43	79	W3MWC*	33	54	80	93	83	W5EFCX	1	4	42	46	72	K9DKU	20	34	70	69	64
K2DJD	27	34	88	88	80	W3NNK	24	33	55	53	60	W5GOW	37	47	97	80	78	K9PP1*	16	39	96	78	70
K2LGI*	9	21	57	43	71	W3NU	30	35	77	88	60	W5HAW	31	49	93	94	91	W9BZW	5	13	78	83	91
K2PZF	31	31	38	9		W3NX	21	37	76	62	70	W5HWM	17	51	47	56	63	W9EWC	21	32	72	52	55
K2QYL	5	65	57	71		W3NY*	18	24	46	58	44	W5HVC	39	48	100	100	74	W9EXE	14	40			
K2QNT/2*	25	48	85	82	34	W3OY*	15	22	80	68	66	W5HXC	12	21	82	38	38	W9JH	25	33	101	94	92
W2UR	21					W3SS*	15	27	63	77	70	W5HXYD	10	42	90	63	72	W9OHH	7	13	73	74	84
W2CP	18	10	47	58	34	W3VT	28	35	95	87	79	W5QWF	10	42	90	63	72	W9QQN	10	21	79	85	65
W2DKM*	18	27	68	61	85	W3WPG*	47	47	50	16	16	W5RSR	29	40	73	75	79	W9ZBD	4	8	57	72	64
W2DXL	36	43	89	88	74	W3ZKH/3*	53	72	150	137	121	W5SWMU/5	10	37	88	74	83	W9AQZM	3	5	70	65	70
W2EHB	9	61	70	63		W3ZATP*	11	29	97	86	88	W5SRXT*	32	48	68	62	91	K9VYV*	21	34	59	54	54
W2EPA	22	18	48	50	70	W3ZFXJ*	28	41	72	71	60	W5SPZ*	19	42	66	57	44	K9WXX*	3	28	67	66	73
W2ITG	17	26	28	39	44	W3ZHG	6	81	80	82	80	W5SZO	26	47	82	72	67	W9HP	23	55	79	72	72
W2JSX						W3ZJKO/3	15	3	13	11	11	W5TAH	25	47	86	84	65	W9CPX*	22	28	65	73	61
W2LEJ	16	29	5																				

DX CONTINENTAL CHAMPIONS

CW		Phone	
Single Op.	Multiop.	Single Op.	Multiop.
EL2CB	9J2XZ	Africa	ZS6DW
JA1AEA	KR6VX	Asia	JA1AEA
LAØAD	SK6AB	Europe	CT2AT
OX3WQ	KZ5KN	N. America	KP4AST
KH6IJ	Oceania	KH6IJ
PJ2VD	LU2DKG	S. America	HC1TH
			CR6GA
			KA2KS
			SK6AB
			KZ5KN
			KH6SP
			PJ9GF

<p>W6KYA 3198-26-41-A 7 W6DZK 192-8-8-A 4</p> <p style="text-align: center;">San Francisco</p> <p>W6WB 358,800-208-575-C35 W6KWE 20,700-50-138-C W6BIP (+WA6DJJ) 583,944-232-839-C36</p> <p style="text-align: center;">San Joaquin Valley</p> <p>W6KEV 425,166-191-742-C47 W6ZSO 204,726-149-458-C43 W6CLP 15,498-42-123-B26 W6MMH 5394-29-62-B10 WA6IVN (+WA6IVM) 1,341,786-302-1481-C74</p> <p style="text-align: center;">Santa Clara Valley</p> <p>W6CYX 1,122,816-272-1376-C72 WB6KKB 628,488-232-917-C69 W6HOC 540,252-258-698-F50 K6DC 528,240-248-710-C54 W6EYY 232,965-155-501-C39 K6MG 189,666-123-514-C39 K6CLV 165,846-131-422-C56 W6EBO 143,766-147-326-C26 W6CLM 92,415-101-305-C41 W6KHS 88,401-79-375-B36 W6VQ 87,630-127-230-C W6ZHD 66,483-89-249-C26 W6ATO 65,365-85-257-C W6HJP 62,010-90-230-A41 W6GJV 59,985-93-215-B37 W6EJ 50,100-100-167-C W6ISQ 28,635-83-115-C 8 W6GBY 27,633-61-151-B32 W6OL 15,933-47-115-B 9 K6TZX 11,466-42-91-A10 WB6KOR 10,076-44-77-A15 K6AO 9477-39-81-C10 W6AKM 8976-34-88-C 7 W6CEO 8658-39-74-C16 WA6DWO 3925-25-53-B 9 W6QDE 3822-26-49-C12 W6CLZ 720-12-20-B 2 WA6PYS 570-10-19-A11 K6EBB (8 oprs.) 3,915,945-405-3223-C96 WA6HRS (+WB6NXX) 785,655-255-1027-C77 W6KJ (multitop.) 436,230-222-655-C WA6IBU (+W6GHO) 13,920-40-119-A45</p>	<p style="text-align: center;">ROANOKE DIVISION</p> <p style="text-align: center;">North Carolina</p> <p>W4TMR 572,418-231-853-B73 K4ARP 268,314-197-454-C46 K4CAX 200,334-173-386-A51 K4CIA 131,208-142-308-C20 WA4FEW 76,680-120-213-C15 WAQMW 52,983-87-203-C16 K8TWK/4 51,282-77-222-A K4JO 33,970-86-133-A28 WB4IRD 2961-21-47-B K4LI 210-7-10-A</p> <p style="text-align: center;">South Carolina</p> <p>K4II 1,125,912-344-1091-C89</p> <p style="text-align: center;">Virginia</p> <p>W4YHD 1,965,120-368-1780-C86 K4PQL 1,650,564-306-1798-F84 W4KFC 1,484,535-331-1497-E56 W4KXV 1,313,025-305-1435-C79 W4DUQ 624,052-286-729-C65 W4NH 516,818-272-751-B W4EZ 521,028-246-706-C43 K4BKG 475,170-235-674-E55 W4DM 430,500-205-700-C40 W4WBC 404,616-184-733-C44 W4PHL 228,150-169-450-C65 W4GF 216,810-165-438-C W4WSF 214,434-171-418-C34 193,116-154-418-C21 K4ZA 149,076-164-303-A34 W4ZM 133,056-144-308-C19 K4ORQ 125,685-133-315-C16 W4QCL 62,856-108-194-C24 W4NM 58,656-96-205-A32 WA4IVL 52,536-88-199-C20 W4KMS 27,489-77-119-F18 WB4GAH 11,952-48-83-B16 W4EXI 10,212-46-74-B14 K4EJG 6640-40-56-A40 K4EJF 4416-32-46-A 7 W4LXJ 3120-26-40-B 7 W4KPB 2175-25-29-B10 W4KQ 495-11-15-B 5 W4KQO 462-11-14-B 2 WB4ODN 462-11-14-B 2 W4BVV (10 oprs.) 6,879,815-493-4653-E96 K4CG (7 oprs.) 3,373,272-414-2716-C96</p> <p style="text-align: center;">West Virginia</p> <p>W8BT 592,539-263-751-C47</p>	<p>W8CDV 126,604-124-342-E41 K8MYU 93,000-124-250-A20 WA8DOY 63,261-99-213-A37 WB8BJ 22,800-76-100-B41 WB8KK 9225-41-75-A17</p> <p style="text-align: center;">ROCKY MOUNTAIN DIVISION</p> <p style="text-align: center;">Colorado</p> <p>WAØGUH 554,472-204-906-C75 WAØVYS 484,956-228-711-C57 WØCAW 43,077-83-173-B24 WAØVPO 42,480-72-202-B43 KØZFL 35,805-77-155-A16 W4UDS/Ø 32,256-72-150-C19 WAØWKV 7605-39-65-C WAØSUD 1575-15-35-B 5 KØEZH 576-12-16-B 6</p> <p style="text-align: center;">New Mexico</p> <p>W5EU 649,512-216-1005-C61 W5QNY 207,014-178-388-C46 W5FKP 65,340-110-198-A31 W5PDO (WA5ROU, opr.) 38,850-74-175-C30 W5OQ 31,104-81-128-C23 K5MAT 23,166-78-99-A15 W5MHT 16,524-54-102-C 9 W5RE 2025-25-27-C 2</p> <p style="text-align: center;">Utah</p> <p>W7HS 601,208-223-899-C68 WA7MGK 78,486-103-254-B54 W7RO 37,800-63-200-A21</p> <p style="text-align: center;">SOUTHEASTERN DIVISION</p> <p style="text-align: center;">Alabama</p> <p>W4KVC 244,032-496-164-E WA4WED 50,955-79-215-B55 WB4EOW 12,742-46-98-A28</p> <p style="text-align: center;">Eastern Florida</p> <p>W4JDR 1,549,080-331-1560-C91 WAETO (WAØSDC, opr.) 1,522,698-361-1406-C74 K4THA 1,520,207-337-1504-G90 K4TIG 475,707-257-617-C54 W4WHK 447,228-246-606-A72 K5YPS/4 255,750-155-550-C38 W4HOS 202,752-176-384-F WB4JSV 173,229-113-511-C WA4BYB 108,267-151-239-C W4WS 75,888-93-272-C24 WA4SVH 68,478-101-226-C35</p>	<p>K4NE 68,002-121-188-B23 WB4QGW 50,343-97-173-B36 WB4MKB 34,428-76-151-C24 K4AUA 27,336-67-136-B17 W4KJL 11,832-58-68-C11 W8WVU/4 8040-40-67-A10 W4DRK 7439-43-58-C W4EEO 3960-33-40-N WA8USU/4 216-8-9-A 2 W4ZXI (8 oprs.) 3,821,658-433-2942-C96 W4TKI (+WA4SQD) 19,980-60-111-B39</p> <p style="text-align: center;">Georgia</p> <p>K4BAI 1,390,932-324-1431-F76 K4EZ 894,558-266-1121-C65 W4DXI 461,125-217-711-C67 WA4CZM/4 49,410-81-205-A44 WB4EQQ 42,660-60-237-B25</p> <p style="text-align: center;">Western Florida</p> <p>K6QP/4 29,952-78-128-C15 W2AGT/4 702-13-18-A 6</p> <p style="text-align: center;">SOUTHWESTERN DIVISION</p> <p style="text-align: center;">Arizona</p> <p>W7IR 1,442,808-348-1384-C78 W7DI 1,213,443-309-1309-C86 WA7IFD 904,092-282-1074-C66 W7UDJ 397,320-220-602-C62 W7AUY 370,173-163-757-C51 W7IV 2484-23-36-B10 W7YMMK 770-14-21-B 1</p> <p style="text-align: center;">Los Angeles</p> <p>W6RR 1,462,239-279-1747-C88 W6DGH 966,075-275-1171-C84 WA6EPQ 733,194-231-1058-C W6TZD 641,388-226-846-C60 WB6WIT 550,827-207-887-C67 W6CS 320,760-198-540-E41 W6JPH 303,696-171-592-F37 WB6GMN 302,679-199-507-C WA6DGO 261,000-145-600-C54 K6SKA 243,528-278-292-C60 W6RCV 218,964-142-514-C52 W6NJU 205,356-157-436-C K6MP 188,415-159-395-C35 WB6HDG 181,050-142-425-C W6ONG 177,642-139-426-B60 K6YFZ 167,979-133-424-B41 W6MXN 161,304-143-376-C W6BXL 152,460-140-365-C34 W6JKR 117,750-157-250-C32</p>
---	---	--	--

TOP TEN Single Operator

CW		Phone	
W/VE	DX	W/VE	DX
K1DIR 2,101,020	PJ2VD 3,160,524	W6RR 2,085,900	KP4AST 6,779,598
W1BGD/2 2,031,300	KH6IJ 3,127,884	W4BVV 1,587,924	HU1P 5,615,313
K1NOL 1,997,372	LAØAD 2,786,616	W4ZCY 1,553,448	HC1TH 4,058,940
W4YHD 1,965,120	YV5KL 2,493,702	K6UYC 1,534,680	KH6IJ 3,964,350
K2KIR 1,894,635	OZ1LO 2,440,848	K6AHV 1,504,914	XE1KS 3,529,170
K4GSU 1,811,596	DL4QQ 2,399,358	W1BGD/2 1,491,645	KZ5NR 3,321,675
W8VSK 1,802,250	OH5SE 2,397,600	K1THQ 1,398,600	XE1LLS 3,262,239
W9IOP 1,755,990	G3FXB 2,174,784	W5JAW 1,389,756	YV4UA 2,701,327
W2DXL 1,717,428	W2RO 2,144,730	W2SKE 1,360,719	VK2FU 2,319,840
WB2CKS 1,702,458	GD5APJ 2,084,358	W4QBK 1,356,678	WA9RAT/HR 2,296,575

K6BEP 109,890-110-333-F
 K6OC 63,180-90-236-C23
 W6EJ 62,916-107-196-C
 W6AW 58,860-90-218-C
 K6CNV 50,367-103-163-A24
 W6WQ 40,902-82-171-C
 W6BUD 19,140-55-116-C 8
 W6MYY 13,668-34-134-B36
 W6CMX 12,978-42-103-D30
 W6B2T 12,240-34-120-A23
 W6ADPQ 9045-45-67-A 8
 W6RW 8400-40-70-C
 K6MHW/6 8010-30-89-B
 K5WNY 7110-30-79-A28
 W6ALLY 5508-27-68-B22
 OH3UQ/W6 5184-32-54-B 8
 W6BDBZ 4536-21-72-B36
 W6JSO 3807-27-47-A17
 K6MV 1008-16-21-A 6
 K6GLC 972-18-18-C
 W6VSS (10 oprs.)
 4,623,804-426-3620-C96
 WA6BCQ (+WA6DIS)
 107,559-111-323-C70

Orange

K6UYC (W6DQX, opr.)
 1,233,549-291-1413-C87
 W7PU/6 574,578-233-822-C39
 K6CU 116,508-133-292-C50
 W6NT 45,696-68-224-D45
 W6TXO 36,423-71-171-A46
 K6TXA 32,175-65-167-B21
 WA6QX 21,450-55-130-B41
 W6BUDC 13,860-42-110-C
 K6PE 3402-21-54-C 3
 WA6BZT 1456-16-31-A15
 W6BWTW 48-4-12-B 1
 W6ANN (5 oprs.)
 2,256,240-357-2110-C94

San Diego

K6SDR 355,116-202-586-C60
 WB6LXS 247,618-161-514-F38
 W6MAR 128,643-137-313-C
 K6PUR 117,150-142-275-C20
 W6PRY 18,444-58-106-F18
 WB6XC 1380-20-23-A 8
 W6ITY (+K6VZA, WB6OLR)
 1,603,920-328-1630-N

Santa Barbara

K6OW 454,944-224-677-C59
 W6KPI 129,954-121-358-B51
 W6GEB 60,876-89-228-A14

WEST GULF DIVISION

Northern Texas

K5ABY 886,386-291-1016-A81
 W5EQT 664,119-243-936-C47
 W5GR 590,058-223-882-C56
 W5FCX 323,400-196-550-C39
 W5VSL 208,926-159-438-C36
 W5KYD 201,432-168-400-C40
 W5TKB 199,584-154-432-C40
 W5SUCT 135,063-129-349-A58
 W5SQUE 29,106-63-154-B12
 W5QU 3612-28-43-D12
 W5FKQ 2622-23-38-N
 W5MSG 27-3-3-A 1
 WA5RXT (4 oprs.)
 815,868-262-1038-C90
 W5ZSX (+W5ONL, WA5UCT)
 551,520-240-766-C72
 WA5YMV (4 oprs.)
 155,520-144-360-D51

Oklahoma

K5BOC 342,081-191-597-C38

Southern Texas

W5JAW 1,579,014-361-1458-C70
 W5WZQ 1,275,192-356-1194-C80
 W5GO 817,644-244-1117-C77
 K5TSR 410,916-242-566-C47
 W5MCO 336,600-204-550-C70
 W5SB 317,796-213-498-G58
 W5LJT 270,204-178-506-C35
 W5LPO 185,592-148-418-B75
 W5GEL (WA5PUQ, opr.)
 173,880-167-348-C22
 K5JZY 149,684-186-296-A68
 WA5AUZ 104,118-134-259-F23
 W5UHG 57,500-100-192-F36
 WA5NOM 16,530-58-95-A64
 W5ELN 360-6-20-B12
 W5AC (WB2HEY, K5s FJZ SBR)
 32,895-85-129-C20

CANADIAN DIVISION

Maritime
 VO1AV 587,241-213-919-C60
 VE1WP 276,192-168-548-A39
 VE1EK 104,877-129-271-A23
 VE1AI 76,680-108-237-D18
 VO1CO 29,110-71-137-A31
 16,146-39-138-A36

Quebec
 VE2DCW/2
 1,300,830-331-1310-C72
 VE2YU 972,000-300-1080-C64
 VE2WA 915,048-284-1074-C70
 VE2AY 803,520-248-1080-F82
 VE2NU 297,792-192-517-E26
 VE2EJ 67,650-110-206-B18
 VE2PK 18,483-61-101-A20
 VE2AQP 3330-30-37-A19

Ontario

VE3KZ 606,096-244-828-A65
 VE3DBB 328,452-202-542-C72
 VE3CGO 205,600-160-432-A40
 VE3COA 136,404-108-421-A54
 VE3WB 71,595-111-215-A41
 VE3A1A 33,600-80-140-D16
 VE3PQ 28,877-67-145-B14
 VE3WZ 26,062-83-106-F16
 VE3KZV 19,440-45-144-C10
 VE3AYR 13,552-56-82-B13
 VE3FV 12,720-53-81-A16
 VE3WV 10,830-38-95-B 7
 VE3DV 10,692-44-81-C15
 VE3GUM/3 (4 oprs.)
 599,850-215-930-C93

Manitoba

VE4MP 10,206-42-81-C12

Saskatchewan

VE5PM 63,360-96-220-B
 VE5TT 7488-39-64-A29
 VE5DZ 5496-24-79-A12
 VE5US (VE5s PU F)
 701,325-225-1075-C85

Alberta

VE6VV 22,878-62-123-C
 VE6IC 648-12-18-B 3
 VE6MZ 189-7-9-A 2

British Columbia

VE7BDJ 712,089-267-889-C
 VE7BZC 178,542-109-546-B47
 VE7HQ 148,022-109-454-B50
 VE7IQ 19,440-45-144-N

Yukon - N.W.T.

VE8ZZ 298,557-147-677-F51
 VE8NWT (VE8BB, opr.)
 60,300-75-268-B13

PHONE SCORES

ATLANTIC DIVISION

Delaware
 W3NX 539,550-275-654-C62
 W3NNK 366,624-228-536-E64
 WA3HG 284,634-189-502-A42
 W3DRD 237,552-196-404-C47
 W3DPA 59,994-101-199-C23

Eastern Pennsylvania

W3DHM 587,334-242-809-C62
 K3EUR 386,883-207-623-C50
 W3BYX 291,060-198-490-C48
 W3YIK 278,499-193-481-C54
 W3ALB 267,057-189-471-C42
 W3NZ 262,556-192-456-C45
 W3GRS 227,006-209-378-C
 K3AIG 223,053-149-499-C56
 K3TGM 215,424-187-384-C46
 W3KCS 140,910-154-305-C23
 W3CGS 93,765-133-235-C30
 W3KFP 91,191-113-269-C23
 W3QLW 89,424-108-276-C44
 W3EQA 89,334-126-238-C19
 W3AFO 13,230-45-98-A11
 W3EVM 11,907-49-81-E
 W3EAD 10,647-39-91-A10
 K3NRC 10,206-54-63-A12
 W3CFB 9900-44-75-B 8
 WA3JKO/3 8883-47-63-A 6
 W3GHD 8580-44-65-B 5
 WA3XF 8256-43-64-C23

W3AIUV 2976-31-32-A
 WA3ETT 585-13-15-B11
 WA3MB 3-1-1-A
 W3GM (8 oprs.)
 3,618,024-466-2588-C96
 (+K3s H11JLK)
 1,296,864-342-1264-C90
 WA3ATP (+WA3ATX)
 980,583-311-1051-C96
 K3HTZ (5 oprs.)
 848,820-301-940-C96
 W3OV (+WB2ZDR)
 792,396-253-1044-C80
 W3SS (4 oprs.)
 511,056-252-676-C72
 W3OK (8 oprs.)
 447,174-234-637-C 8
 W3KT (+WA3HOM)
 320,397-209-511-C
 W3WPG (multiop.)
 108,360-140-258-C

Maryland-D.C.

WA3KEG 969,108-332-973-C62
 W3AXW 510,048-253-672-C75
 W3EZZ 484,592-248-689-B59
 W3KMW 480,414-251-638-C70
 W3BQN 394,299-227-579-G66
 W3CRE 381,924-206-618-C50
 WA3JXJ 142,272-152-312-E38
 WA3GZT 136,782-153-298-G65
 W3KDD 129,300-100-431-C36
 W3GN 114,426-117-326-C20
 W3HVM 81,765-115-237-C30
 W3PWO 80,442-123-218-C25
 W3FU 69,630-110-211-D24
 W3JPT 60,543-93-217-B25
 W3ARU 52,938-102-173-C30
 K3TVE 46,800-90-174-B43
 WA3JYV 46,191-89-173-A29
 WA3HDT 32,956-77-144-B32
 WB2VQ/G3 25,410-77-110-C
 W3MVB 20,574-54-127-C 8
 K3CBW 14,076-46-102-C14
 W3LMZ 8256-43-64-B12
 W3FA 2850-25-38-A 4
 W3ML 2418-26-31-B 3
 W3MFI 2046-22-31-A 3
 W3ZM 1224-17-24-B16
 W3BVO 798-14-19-A13
 W3CSZ 663-13-17-A 2
 W3DWF 507-13-13-B 8
 W3ZKH/3 (6 oprs.)
 5,793,177-533-3676-C
 W3ADO (18 oprs.)
 1,248,813-327-1273-C96
 WA3FXJ (3 oprs.)
 747,441-279-893-C75

Southern New Jersey

W2EPA 340,288-208-546-C54
 K2QIL 324,918-198-547-C60
 W2EHB 291,711-203-479-F53
 W2UCV 261,522-174-501-C47
 W2UI 260,721-177-491-B30
 W2SIA 216,132-166-434-F49
 W2PAU 186,660-170-366-F48
 W2ITG 139,035-155-299-C40
 W2EYS 136,290-154-295-E45
 W2PU (K4BNC, opr.)
 61,755-115-179-A24
 W2QJK 60,840-104-195-C
 WB2JZX 49,749-103-161-C20
 WB2CGW 42,624-74-192-C20
 W2ORA 38,106-87-146-A19
 W2FHY 37,260-90-138-B48
 K2QPN 34,596-93-124-C
 K2PZF 33,696-78-144-C22
 W2FBF 24,747-73-113-A14
 WA2HJF 19,392-64-101-A12
 W2PFF 14,514-59-82-B34
 W2SDB 13,050-50-87-B18
 WB2VMD 6966-43-54-A16
 WA2VEE 5310-30-59-B14
 W2OWA 5280-32-55-C18
 K2SQM 1377-17-27-B 4
 WA2FVU 1035-15-23-D 9
 WA2IUF 918-17-18-B 9
 WA2NPD 660-10-22-A 3
 W2EOT 624-13-16-C 5
 WB2FJE 624-13-16-A 4
 K2PPQ 450-10-15-B 4
 W2JUG (WA2HJF, opr.)
 264-8-11-B
 WA2EQB 264-8-11-A 4
 WB2WAK 108-4-6-B 1
 WA2BPL 4-4-4-B
 WA2CDX 48-4-4-B
 WA2IZS (+K2CPR)
 877,440-320-914-C96
 WB2ZPB (+WA2BPL)
 11,320-130-296-D30

K2AA/2 (K2MZP+W2FYS+W3CXO)
 82,296-127-216-F41
 W2ZQ (WB2JSS, K3CPF)
 55,290-97-190-F30

Western New York

K2DJD 1,022,325-317-1075-C77
 WA3HRV/2 516,384-264-652-C73
 WB2YQH 487,872-231-704-C41
 W2PDB 328,947-199-551-C52
 K2UNY 194,922-147-442-C51
 WB2OEU 180,048-176-341-C29
 W2SNI 150,936-152-331-C38
 W2QIP 58,206-109-178-C32
 WA2UJM 57,528-94-204-C40
 W2ABYJ 56,240-95-205-C12
 WA2ARM 19,800-55-120-C13
 W2FR 19,491-73-89-C10
 W2RRP 19,110-65-98-B15
 WA2HSU 18,483-61-101-B15
 WA2DKV 17,172-53-108-D27
 W2SSC 15,936-64-83-C10
 10,296-52-66-E14
 K2KNC 9720-45-72-A15
 W2WZQ 1600-49-41-73-C21
 WB2MOI 8901-43-69-C15
 W2TMI 4455-33-45-A15
 WB2EQR 1980-20-33-A11
 W2FXA 1728-24-24-C
 W2UI 810-15-18-A
 WB2DTE 672-14-16-B 4
 WA2BEX 147-7-7-A 1
 K2LJG (+K2LWR)
 186,327-201-309-C85
 WA2DHS (+WB2HUA)
 124,108-142-296-A57

Western Pennsylvania

W3VTU 954,504-324-982-C82
 W30V 770,523-299-859-C61
 K3HZL 601,314-278-721-C70
 K3OTY 338,352-212-532-C60
 W3QZH 171,915-157-365-C56
 WA3JHB 160,000-160-334-E8
 W3YV 64,376-104-207-C46
 W3PIX 60,237-97-207-B32
 W3VK 38,220-91-140-C24
 W3JGY 24,192-56-144-A19
 W3PZC 24,150-70-115-B20
 WA3KOS 20,100-67-100-A 7
 W3UHN 16,560-60-92-C13
 WA3HXX 12,789-49-87-B 9
 W3KVS 10,812-53-68-C20
 W3QEI 10,575-47-75-B21
 W3DKL 9450-45-70-B12
 WA3KQA 6903-39-59-B 8
 WA3KKL 5904-41-48-C10
 W3SDV 3312-23-48-B15
 W3TV (+W3s AOH VW)
 72,192-128-188-A38
 WA3JH (+WA3MQJ)
 36,708-76-167-A61

CENTRAL DIVISION

Illinois

W9BWZ 687,690-270-849-C67
 W9QQN 576,420-260-739-C70
 K9BGL 523,107-263-663-C81
 W9OHH 484,584-244-662-C
 W9WYB 269,028-188-477-C
 245,016-166-492-C59
 149,703-139-359-C42
 135,888-199-304-C46
 80,598-101-266-C35
 K9KDI 72,924-118-206-B
 W9GQA 53,730-90-199-C28
 W9GYN 29,784-73-136-A37
 W9QLM 27,510-70-131-B35
 26,082-54-161-B37
 WA9YVL 25,636-68-126-C 8
 22,500-50-150-C15
 W9EYB 21,114-69-102-A47
 W9YVB 21,060-54-130-C13
 WA9WSS 19,293-59-109-F27
 16,974-46-123-C13
 13,446-54-83-C12
 13,197-53-83-A15
 11,880-40-99-C 7
 11,466-42-91-B33
 10,716-47-76-B20
 W9A9QY 8910-45-66-A
 WA9UCE 7626-41-62-A10
 W9YUV 7560-40-63-C 8
 W9CXX 6903-39-59-C 8
 5616-36-52-B16
 W9KRU 4284-34-42-C10
 WA9EKJ 4089-29-47-A 9
 W9N2M 1728-18-32-C 5
 K5LQJ/9 1170-15-26-A16
 W9ZII 1080-18-20-A12

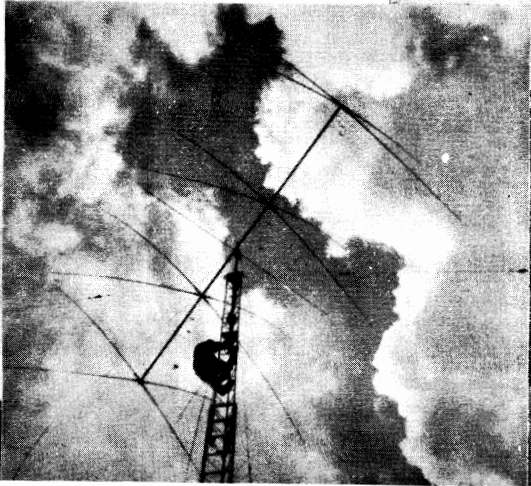
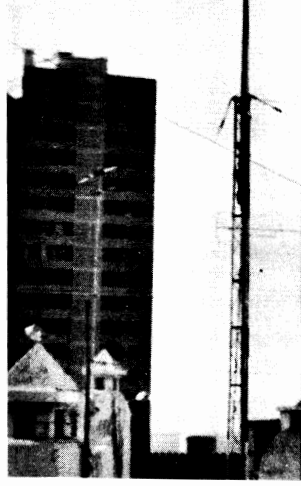
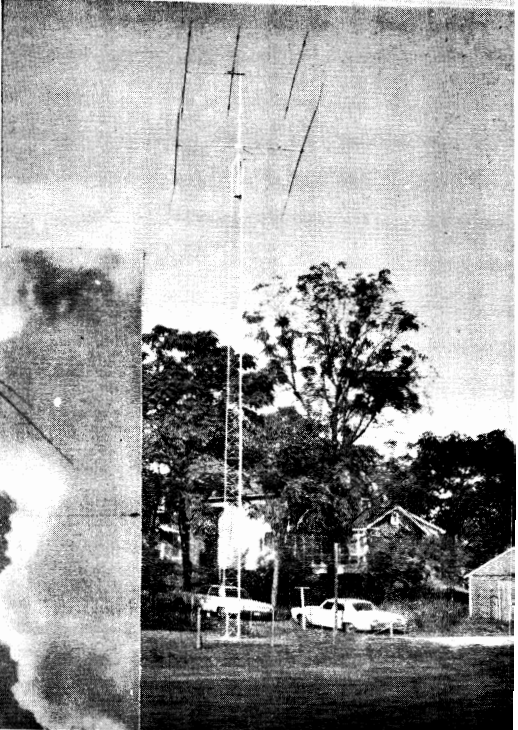
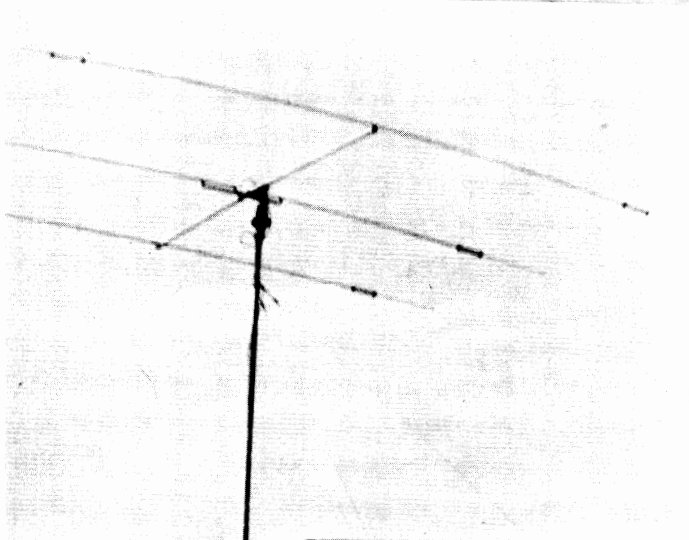
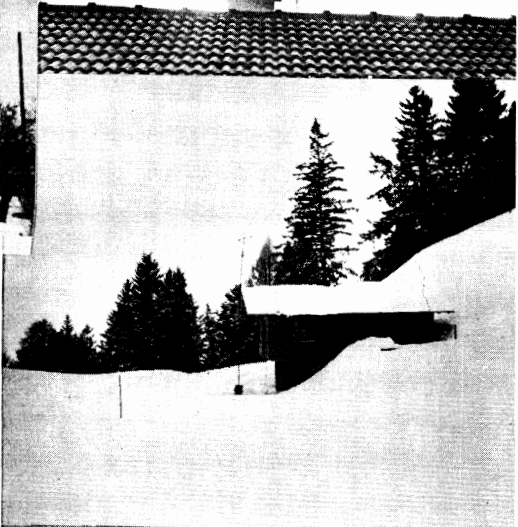
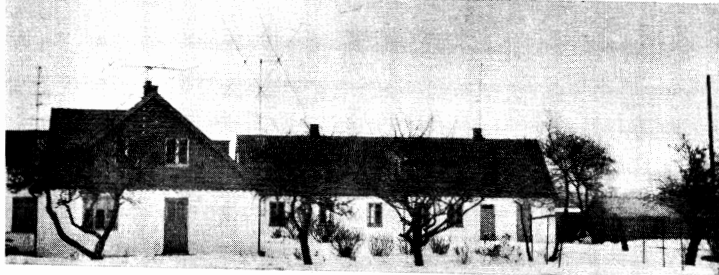
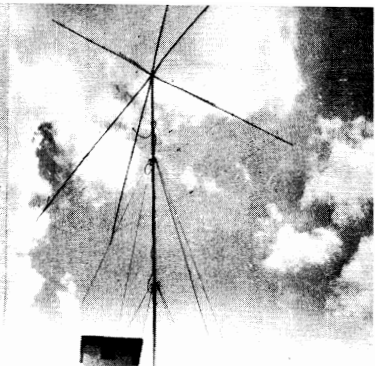
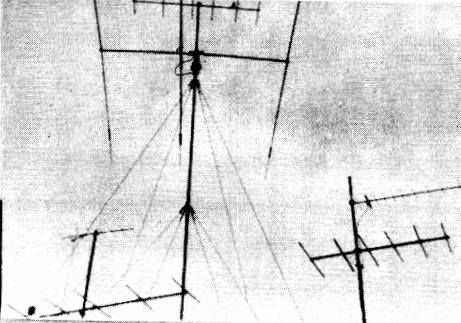
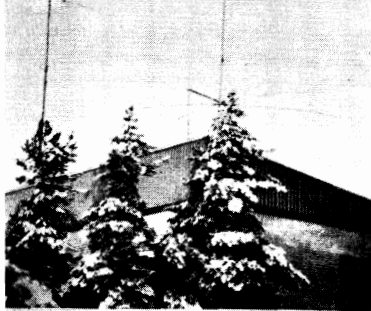
HERE'S WHO YOU MISSED ON 80/40!

Call	80	40	Call	80	40	Call	80	40	Call	80	40			
CR6AI	15	288	DL4BT	35		LA3UF	17		SM0CCE	3	122	YO3AC	31	
CT3AS	40	94	DL4QQ	170	419	LA80M	11		SM0DSG	8		YO6AFP	153	
EA8FO	109	204	DL6WD	135	414	LA9JM	23		SM0FY	5		YO6GZ	50	
EL2CB	128	307	DL7AA	109	363	LA9AD	274	568	SP2AVE/2	13	79	YO7NA/8	14	
TJ1AW	19	89	DL7MQ	84		DJ6SI/LX	85	105	SP2BMX	7		YO8DD	3	
ZE1DC	4		DL7NS	18	111	LZ1KPG*	105	211	SP3BHG	146		YO8KAE*	13	
ZS6AYU	2		DL0FR*	54	290	LZ1KVP*	14	201	SP3DOI	104		YO8MK	1	
ZS6FN	89		DL0JR*	38	274	LZ1SS	26		SP4DCS	31		YO9HO	305	
5H3KJ	34		DM2ACC	4		LZ2DC	5	97	SP5AIB	4	27	YT1BCD*	133	261
9I2XZ*	2	37	DM3OML	4	26	LZ2IM	7	11	SP5ASY	11		YT1FJK*	6	
HL9VQ	49	82	DM3PA	3	16	LZ2ND	5		SP6ASD	36	178	YT1SJ	4	12
HS5ABD	23	47	DM3SMB	8	33	LZ2RF	4	57	SP6XA	3		YT2CBM*	30	67
JA1AEA	65	220	DM3UDM	7	12	OE3RE	3	2	SP7CKF	24		YT3JS	6	
JA1AFA	6		DM3XHF	25	29	OH1VA	2		SP8AG	12		YU1AH*	36	
JA1AS	61		DM3XI	7	43	OH1XX	6	213	SP8KBN*	2		YU1LW	12	
JA1HLR	44		DM4ROL	22		OH2AA*	22	27	SP9KHX*	5		YU1SF	26	
JA1JGK	52		DM5DL*	28		OH2BJY	1		TF2WKF*	259	474	YU3EJ*	175	404
JA1NDO	12	11	EA2CL	29		OH3MM	72		UA1KAG*	50		YU3NY	109	301
JA1SMA	11		EA2DT	43	87	OH4RH	48		UA1KBR*	68		3Z3CDD	62	
JA1SR	10	47	EA2HR	9		OH5E	12	46	UA1TL	72		3Z5ATO	163	
JA2BSD	4		EA2HW	9		OH5UQ	5	140	UA1ZW	2	289	3Z5PWK*	5	
JA2CPD	5		EA3KT	20	46	OH6NO	5	10	UA2BZ	85		3Z8AFS	4	
JA2HO	13	14	EJ9J	203	270	OH6NO	6		UA2EC	21		3Z8HR	44	
JA2IU	16		F2PO	44	35	OH8RW	62		UA2KBR*	51	79	3Z8KAF*	45	
JA3EVJ	23		F8TC	17	61	OI3NY	4		UA3KAO*	10	114	3Z8MJ	10	
JA3HBF	32		F8TM	38	25	OK1AE	6		UA4AN	75		3Z9ABE	124	
JA3JM	19	110	F8TQ	90	172	OK1AF	3	91	UB5IF	48		3Z9CEM	10	
JA4BNT	60		F8VJ	160	265	OK1AII	5		UB5KBD*	5	112	CO2LD/7	43	
JA7AMK	33		F8ZF	137	126	OK1AOK	49	12	UB5KEQ	4		FP8AP	165	240
JA7HQP	20		F9EP	2		OK1AOX	8	138	UB5KVF*	61		KL7EWA	32	122
JA7YAF*	29		G2AJB	6	192	OK1APV*	76	217	UB5MZ	90		KL7GCV	9	
JA8DIM	13	47	G2DC	83	63	OK1ATX	88	134	UB5TH	18		KP4AN	210	34
JA9BE	32	46	G2QT	21	143	OK1JBF	11		UB5TR	42		KP4BJM	74	65
JA9YBA*	9		G2RN	307	398	OK1KTL*	53	88	UB5ZAA	11		KP4DIS	48	
JA0EMS	5		G3APN	26	97	OK1KYS*	43	43	UB5ZE	48		KP4DJ1	10	51
JH1AGH	59		G3ESF	106	183	OK1MSP	43	63	UC2CY	77		W4B4FOT/KP4	64	184
JH1CBI	68		G3FXB	193	384	OK1STU	39	83	UC2J	39		KV4AM	235	235
JH1EYM	16	109	G3HZL	60	156	OK1TA	99		UF6DA	7		KZ5KN*	70	
JH1GNL	48	173	G3KMA	111	232	OK2BOB	81	226	UK1WAB	11		KZ5NR	347	237
JH1QYL	16		G3KSH	25	10	OK2B	2	28	UK1ZAA*	9	281	OX3WQ	10	104
KR6VX*	74	137	G3TXF	126	314	OK2B	34		UK1ZAB*	6		PJ8AA	277	200
OD5LX	14	54	G5APJ	161	478	OK2P	50		UK2AAO	33		PJ8PM	92	152
UA9PP	7		GJ3EX	21	40	OK2Q	8	100	UK2BAV*	41	120	VP9BY	35	116
UA9WS	2		GJ3OLJ	38	87	OK3C	2	69	UK2BBB*	1	15	KH6HAM	34	104
UA9IW	11		GM5APK	142		OK3CC	22	36	UK2VWV	7		KH6J	352	470
UA9KCA*	16	19	GW3JI	145	311	OK3CI	3	109	UK4HAP*	4		KS6DH	9	
UA9KCO*	53	150	HA1KSA*	50	124	OK3KG	97	228	UK5KAA*	4		AX2VN	34	44
UA9KZB*	72		HA3KNA*	1	31	ON4XG	97	220	UK5VAA	34		AX3AXK	3	77
UA9LJ	14		HA3MB	1	1	OZ1LO	193	359	UK5WAA	94		AX5FM	30	
UK9CAE*	96		HA3NA	3	9	OZ1W	176	543	UK5WAS	2		AX5OR	3	
UK9CAB*	17	53	HA5KFZ*	53	79	OZ3PO	32	75	UK5WAZ*	38	90	VK2GW	251	
UK9ZAA*	17	44	HA7RN	29		OZ4H	13	30	UK6LAZ*	44	168	VK3QI	345	
UL7GW	6		HA8CH	51		OZ5CI	6		UP2KBC	56	346	ZL1AMO	1	317
UL7RL	1		HA8KCC	14		PA0FRI	4	22	UP2OX	9		ZM1AFW	43	
UW0IX	2	76	HA8UF	19		PA0GN*	10	83	UP2SB	5	83	CE2CR	14	
VU2JN	16		HA8UH	52		PA0KOR	47		UQ2KAA*	26	114	CE3CF	144	
VU2MSK	45		HA9KOB*	10	36	PA0LOU	231	332	UQ2KBP*	8	271	CX9BT	11	12
W6DLE/4X	34		HA9KPE*	6		PA0RCT	8	34	UQ2KCR*	16	109	LU2DKG*	6	132
9M2LN	1	47	HA9LR	34		PA0TA	13	19	UQ2OF	5		LH6DAZ	16	
CT2AT	357	158	HB9AGH	35	107	PA0UV	45		UT5BP	21		PJ2HT	141	85
DJ2YE	1	10	HB9ANX	28		PA0VB	2	19	UT5KDP*	8	143	PJ2VD	383	485
DJ3XK	18		HB9DD	76	113	SK2CI*	6		UT5MD	82		PY1NEW	23	
DJ4UF	32	73	HB9KC	53	58	SK3BP*	25	180	UT5SY	8		PY7AZQ	286	
DJ4ZR	50	384	HB9XGR*	74	196	SK6AB*	320	994	UT5XB	31		PY7SR	182	
DJ5GG	4		IIASE	10	294	SK6CF*	290	484	UV3BK	4		PZ1AH	132	167
DJ0TA	32	18	IIBCL	29		SM2COR	51		UV1CX	18		YV4AMC	48	
DK2KV	1	7	IIBLF	82		SM3ARE	43		UW4AT	13		YV5KL	341	623
DK3BN	10		IIER	5		SM5ACQ	5		UY5DV	22		9Y4VU	132	144
DK3HA*	1	38	IICYZ	10		SM5CMP	94		UY5QB	18		*Multioperator Station		
DL1GN	1	2	JX5CI	2		SM5UU	11	57	UY5UI	14				
DL1QT	29	20	LA1OA	66	326	SM7AIL	1	3	UZ3TG	10				
DL2JO	33		LA2Q	7	4	SM0BDS	1	3	YO2AVP	27				

C
W

CR6GA*	41		UW9AF	8	14	HA5CQ	1	4	SM5EXE	19		DUIFH	22	95
EL2BD	21	226	W6DLE/4X	23		HB9DX	5	2	TF2WKF*	6	261	KH6J	229	308
EL2BZ	144		CT1BH	117	180	HB9QD*	111		UA2KBD*	2		KH6SP*	238	774
EL1H	11		CT1FL	1		IIAJ*	74	227	YT1BCD*	53	82	KH6UL*	124	492
ZS3S	8		CT2AT	410	407	IIBAF	62	188	FP8AP	159	104	KM6CE*	90	
ZS6DW	1	198	DJ2YE	7	18	IIBBZ	11		WA9RAT/HR2	124	208	KS6DH	9	258
HL9VQ	3	21	DJ8YQ	1		IIBCL	12		HT1MG	31		AX3QV	8	
HS5ABD	30	15	DJ9MH	1		LD	53	7	HT1P	206	373	VK2FU	57	324
JA1AEA	32	172	DL4AP	25		LJOL	01	13	KK1AST	405	720	VK3QI	29	164
JA1NDO	5		DL4RM	56		LJPH*	25	290	KK1CQB	25		ZL1AMO	1	74
JA3ERG	41		DL6WD	9	1	LJRO*	1		DJ1	1	108	CX1CN	1	
JA3HBF	2		DL6WE	1		LJ9AD	34	39	HT1FOT/24	45		HC2TH	169	395
JA3USA	70		EA3QW	20		LJ2EGL	14		HT1AM	85	231	LU8DKA	2	61
JA4FSD	37		EA4LH	162	2	LJ5SE	1	10	HT1NR	370	477	PJ9GF*	328	259
JA7GQB	1		F3KW	136	222	OH1NI	3		TG9GF	71		PZ1AH	4	3
JA9BE	3		G2QT	15	56	OZ1LO	58	103	VP9BY	135	145	K4MUP/YV1	275	
JA9YBA*	4		G3FVA/A*	10		PA0LOU	6	8	VP9GE	43	417	YV4UA	244	438
JH1EYM	3	16	G3YXR*	12		SK3BP*	30		VP9MI	33	2	4M7AV	143	181
KA2KS*	71	232	GM5AME*	16		SK6AB*	42	204	XE1KS	394	553	ZP5GS	1	
KR6VX*	89		G3N3WV	11	88	SM5EAC	12	20	XE1LLS	257	538	9Y4MM*	76	35

P
H
O
N
E



Success can certainly be measured by the size of your antenna farm, QTH etc. The above belong to, (L to R, top to bottom); OH5SE, IIASE, 9M2LN, OZIL0, HBØXGR, EA8GK, W4ZCY and KØIR.



Ever wonder who the man was behind the mike, or key? If so, I'm sure you'll be interested in the above. They are (L to R, top to bottom); A2CAH, PY1NEW, 9M2LN, 4S7DA, KS6DH and G3FXB.

DM2CRM	10,200-40	85-A	Switzerland	OK1STU	198,858-131-506-A	SM5CPC	34,959-43	271-A
DM3SBM	9450-42	76-B		OK1FV	195,216-83-744-B	SM6CZU	17,472-52	112-B
DL4BY	5925-25	79-B 2	HB9AGH	OK3CCP	167,088-118-472-A	SM1DIE	15,336-36	142-B 15
DL6WE	5850-31	60-A	HB9DX	OK1TA	14,323-118-419-A	SM5BMB	10,560-32	110-B
DM4RFM	4032-21	64-A	HB9AJI	OK1IATX	90,132-84-358-A	SM9FO	9600-32	100-A
DM3XFH	3381-21	54-A	HB9KC	OK3CGI	83,226-97-286-A	SM5XX	8424-27	104-A20
DL7BO	2288-26	30-A	HB9ANN	OK1AFL	75,603-79-319-A	SM5XP	7224-28	86-B
DM3XUE/A			HB9ANR	OK2BOL	75,360-80-314-A52	SM6PF	7224-28	86-B
			HB9NL	OK1AOR	62,805-79-265-B	SM9QY	4480-31	50-B
	1536-16	32-A		OK2BJB	55,000-55-334-B	SM9ETK	3525-25	47-A
DM3YMO	966-14	23-A	Liechtenstein	OK1KZ	38,995-55-254-B	SM4ZD	2052-18	38-B
DM2ACC	864-12	24-A	HBØXGR (DJ9MH, DL4CE)	OK2BPE	35,397-57-211-A	SM6BLT	1254-19	22-A
DM3RQG	741-13	20-A		OK2BFM	35,154-54-217-A12	SM6JY	459-9	17-A
DM4ROL	594-9	22-A	Italy	OK1FAF	30,114-42-239-A	SM6JV	270-9	10-B
DLØR (4 oprs.)	1,524,640-208-2443-N		IIASE	OK1EP	29,601-39-253-A	SK61B (8 oprs.)	4,860,978-258-6323-B96	
DLØR (4 oprs.)	1,412,550-219-2150-B		IIIBCL	OK2BFS	29,436-44-223-B	SK6CF (12 oprs.)	3,678,336-248-4944-B90	
DK3HA (+DK2PH)	274,800-120-767-C		IIIFGP	OK1MGW	24,585-55-165-A19	SK3BF (4 oprs.)	1,619,568-207-2608-B	
DM5DL (+DM5SDL)	29,792-56	179-B	IIIMGN	OK3CJE	24,282-38-213-A	SK2CI (SM2s ECL EKM)	89,760-85-352-B	
	Spain		IIYCC	OK3YCE	23,754-37-216-A	Poland		
			IIIBLF	OK1ND	23,616-36-220-A	SP3DOI	428,844-156	917-A45
			IIER	OK2OV	20,007-57-117-B	SP6ASD	328,653-159	709-A
			Sardinia	OK3RMG (OK3CIG, opr.)	16,905-35-161-B	SP3BHG	275,064-146	628-A
EA2DT	359,544-142	844-A	IS1VEA	OK3ALE	15,975-45-119-B	SP2AD	270,000-125	720-A
EA3KT	175,875-125	469-A56		OK3KGI	15,593-31-168-A	328HR	230,880-122	630-A
EA2IA	82,512-72	382-B25	Jan Mayen	OK1MDK	12,284-37-115-A	329ABE	163,317-101	57-A
EA2HW	34,080-71	160-A22	JX5CI	OK1MSP	10,634-26-139-A17	SP5AI	80,868-92	296-B48
EA2HR	26,649-63	141-A38	Norway	OK3CCC	10,455-41-85-A	328MJ	51,942-66	263-A
EA5BS	17,472-39	151-A 8		OK2BDM	10,430-35-101-A 4	SP2AVE/2	51,660-82	215-B
EA2CL	7881-37	71-A38	LAØAD	OK3CEG	10,146-38-89-A	SP8AG	51,136-64	274-B
EA2CR	3948-28	47-A	LA1OA	OK1ATP	8700-29-100-B	329ZD	34,773-67	174-B
	Republic of Ireland		LA8OM	OK2BCJ	8667-27-108-A	326BAA	26,325-45	195-B
EI9J	1,562,232-238-2197-A42		LA3UF	OK1NOV	7277-29-84-B	328ARY	25,050-50	167-A
EI5F	110,838-91	406-A	LA9RM	OK1AOV	7047-29-81-A	328AFS	24,138-54	149-B
	France		LA3HM	OK3TGS	5184-24-72-A	322PI	18,036-36	167-B10
F8TQ	935,830-203-1550-A63		LA9JM	OK2BCI	4554-23-66-B	328AWP	17,640-42	145-B25
F8VJ	928,584-216-1433-A55		LA4DM	OK2BEU	4444-22-77-A	325BAK	15,372-36	143-B
F8TC	865,593-161-1171-835		LA2Q	OK1AVI	4176-24-58-A 3	SP4DCS	12,958-38	114-A
F8ZF	547,305-165-1127-B29		LA6XI	OK1AQO	4137-21-67-A	329XG	12,915-41	105-B
F2PO	231,819-133	581-A	LA9M	OK3BT	3456-24-48-A	329AVV	12,610-26	47-A
F8TM	76,176-92	276-A20	Luxembourg	OK3KQG	2916-18-54-A	322AGH	2664-24	38-A
F9RO	25,320-60	141-A 6	DJ6SI/LX	OK2PCN	2250-15-50-A	SP5ASY	2448-24	34-A
F8VO	16,170-49	110-A		OK2BCH	1377-17-27-A	328CCU	2268-18	42-A
F9EP	9480-40	79-A13		OK1ZW	960-10-32-A12	SP2BNJ	2070-18	39-A
F9DW	8979-41	73-B10	Bulgaria	OK1AEH	396-11-12-A	322AEO	1575-21	25-A
F2GO	189-7	9-A		OK1JBF	198-6-11-A	SP9AES	1566-18	29-A
	England		LZ2DC	OK1AI	60-4-5-A	328CFZ	936-12	26-A 4
G3EXB	2,174,784-241-3008-A78		LZ21M	OK1APV (+OK1GT)	1,470,644-212-2320-A80	SP7CKF	858-13	24-A
G2RO	2,144,730-245-2918-A70		LZ1SS	OK1KTL (6 oprs.)	1,032,427-187-1844-B90	SP2BMX	60-3-7-A	
G3TXF	1,700,065-233-2483-A76		LZ2RF	OK1KYS (2 oprs.)	86,700-85-342-A	328KAF (multiop.)	121,542-94	431-B
G3KMA	828,036-198-1394-A74		LZ2ND	OK3KWK (3 oprs.)	60,920-40-509-A22	325PWK (7opr.)	109,280-80	456-B
G3ESF	688,416-202-1136-A		LZ2KHN	ON4XG (Belgium)	1,117,314-209-1782-B54	SP9KH (multiop.)	52,206-66	266-A
Q2QT	556,686-169-1098-B		LZ2KAF	Denmark		329KDD (SP9s CAX DEW)	7582-17	150-A
G3APN	437,076-162-901-A38		LZ1KWF	OZ1LO	2,440,848-241-3376-B82	SP8KBN (3 oprs.)	6162-26	79-A
G3HZL	263,655-155-567-A39		LZ1KPG (4 oprs.)	OZ1W	1,327,664-208-2192-A60	Greece		
G2DC	250,509-151-553-A20		LZ1KEZ (3 oprs.)	OZ3PO	236,115-135-586-D20	SVØPV	424,512-132-1072-C22	
G2AJB	127,544-107-410-A		LZ1KBG (3 oprs.)	OZ4H	174,447-117-497-A	SV1AE (W3SM, opr.)	8874-34	87-A 4
G3KSH	90,496-101-299-A20		LZ1KBG (3 oprs.)	OZ7G	85,488-52-548-A	Iceland		
G3JKY	64,320-80-268-A		Austria	OZCI	80,656-41-332-A	TF3SF	3024-24	42-B 6
G8RZ	29,859-37-269-A37		OE3RE	OZ7ON	69,237-47-497-A24	TF2WKF (3 oprs.)	2,769,870-254-3664-B93	
G3CWL	4650-25	62-A 8	OE1DEW	OZ7XG	19,624-44-150-A	European R.S.F.S.R.		
G3WP	1386-18	26-A	Finland	OZ4HW	6570-30-73-A	UA1ZW	857,844-188-1561-B	
	Isle of Man		OH5SE	OZ6HS	6120-24-85-A	UA1NR	221,076-92	801-A
GD5APJ	2,084,358-229-3036-A		OH4RH	OZ2CE	1014-13-26-A	UW1CX	167,232-104	536-B
	Northern Ireland		OH3NY	Netherlands		UK4HAW (UA4IN, opr.)	135,450-105	430-B
GI3OLJ	332,520-136	815-A40	OH2MK	PAØLOU	1,944,152-233-2861-A70	UA4AN	126,126-98	429-A
GI3JEX	108,990-105	346-A26	OH8RW	PAØKOR	415,245-155-893-A34	UA4XQ	90,930-70	433-A
GM5APK	273,776-142	644-A48	OH1XX	PAØRCT	206,426-121-569-A	UW3HE	76,869-73	351-B
GM3SKX	63,720-54	394-A22	OH3NR	PAØFRI	144,324-114-422-A	UA1IA	75,378-51	501-B
	Wales		OH5RZ	PAØVBI	86,597-99-333-A	UA4LK	68,340-68	385-B
GW3JI	1,009,113-203-1657-A		OH2BAH	PAØYN	62,208-72-288-B	UA1TL	67,440-80	281-D
	Hungary		OH1VA	PAØVU	54,492-76-239-A35	UV3VG	64,491-83	262-B
HA8KCC	128,977-101-426-A		OH6NO	PAØWAC	32,391-61-177-A10	UA3TV	50,922-69	246-B
HA8UH	102,942-86	399-B16	OH5SU	PAØWT	19,981-53-126-A	UA1DI	50,142-61	274-A
HA3MB	10,952-37	100-A	OH3MM	PAØVDR	17,850-51-117-A 6	UV3DO	47,031-61	257-B
HA8UF	28,899-57	169-A	OH2BJY	PAØHY	9272-38-82-B	UW1ZI	36,096-97	256-B
HA8KUC	26,334-38	231-B	OH7NW	PAØGN (multiop.)	578,920-164-1184-A71	UV3JW	29,583-57	178-B
HA5AX	22,800-38	201-A26	OH4RB			UA1WB	25,962-42	206-A
HG5EA	10,440-29	120-A	OH1LX	Sweden		UA1UQ	21,942-46	159-A
HA8CH	2432-16	51-A	OH2BO	SM5CMP	653,082-178-1230-D44	UW6DR	21,105-35	201-A
HAØLR	1428-14	34-A	OH5QV	SM6BZE	409,026-142-1101-B39	UA1MV	20,202-37	182-A
HA7RN	957-11	29-A	OH1LU	SMØBDS	405,552-142-979-A69	UA6BV	17,646-34	173-B
HA3NA	360-10	12-A	OH6RC	SMØACC	365,148-147-843-B			
HA1KSA (3 oprs.)			OH1PG	SM5ACQ	334,530-135-826-B			
HA5KFZ (multiop.)			OH8RV	SMØDSG	289,080-120-803-B			
HA9KOB (2 oprs.)			OH1UR	SM4DHF	283,392-123-768-B			
HA9KOC (2 oprs.)			OH5UX	SM5BNX	238,050-115-690-C			
HA3KNA (7 oprs.)			OH2BU	SM5UU	129,888-144-509-B58			
			OH2AA (5 oprs.)	SM3ARE	199,836-122-546-B			
HA9KPE (2 oprs.)			Czechoslovakia	SM2COR	184,080-130-472-A			
HA5KBM (multiop.)			OK2BOB	SM7AIL	116,811-117-331-B			
			OK1AOX	SMØFY	98,010-99-330-B			
			OK3CIR	SM5CAK	65,550-58-327-B			
			OK2QX	SM5BRS	37,611-63-199-A			

JA3HBF 3196-17-63-A	Isle of Man	SK6CF (SM6s APQ CKU)	Bermuda
JR1ACP 2240-14-55-A	GDSAPJ 30,132-36-279-A	249,480-126-660-B11	VP9BY 1,071,984-184-1942-A
JA7GQB 957-11-29-A	Scotland	SK3BP (4 oprs.) 239,742-114-701-D	VP9GE 760,594-178-1425-A36
KA9ACR 837-11-29-A	GMSAME (+GM5s AQM AQR)	Poland	VP9MI 681,408-156-1456-A27
JA8DED 837-11-29-A	347,160-110-1052-A	325CJT 175,518-98-597-A40	Mexico
JA7VH 837-11-29-A	Wales	SP5AKG 125,241-109-383-B	XE1KS 3,529,170-270-4357-C50
JA7YKF (JA7VH, opr.)	GW3NWX 611,886-146-1397-B	329BZM 1566-18-29-A	XE1LLS 3,262,239-261-4263-B
JA2ODB 456-6-24-A3	Hungary	328AWP 240-8-10-B	XE1J 1,158,894-198-1951-N
JA0HFE 340-5-25-A4	HASCOQ 90,780-85-356-A26	325PWK (multiop.) 162-6-9-B	XE1UA 95,742-54-591-B12
JA3AVO 144-4-12-A	HB9T 240,090-106-755-B18	SV0WNN 5244-19-93-B4	OCEANIA
JA4DVT 366-3-4-A3	HB9DX 34,776-56-207-B	TF3SF 168-7-8-A3	Philippine Islands
JA0BXP 27-3-3-A1	HB9DQ (4 oprs.) 826,488-156-1817-C57	TF2WKF (7 oprs.) 962,925-185-1737-B56	DUI1FH 537,540-155-1156-C
JA4GXS 12-1-4-A	Switzerland	European R.S.F.S.R.	New Caledonia
KA2KS (4 oprs.) 1,655,478-198-2787-G96	HB9T 240,090-106-755-B18	UA3FF 98,496-72-456-B	FK8AH 26,832-52-174-A5
JA9YBA (4 oprs.) 45,333-69-238-A27	HB9DQ (4 oprs.) 826,488-156-1817-C57	UA1LE 10,125-25-135-B	Fr. Oceania
		UA3HH 2835-21-45-B	FO8BX 103,596-89-388-B
		UV3NB 2457-9-91-A	Guam
		UW3DH 126-6-7-A	KG6ASP 180,323-97-620-B18
			WA3EEE/KG6 990-11-30-B4
			Mariana Islands
			KG6SX 20,600-40-172-B20
			Hawaiian Islands
			KH6IJ 3,964,350-247-5350-C75
			KH6SF (9 oprs.) 4,035,324-262-5134-C96
			KH6UL (4 oprs.) 1,591,266-226-2347-C48
			Midway Island
			KM6CE (4 oprs.) 85,398-86-331-F14
			American Samoa
			KS6DH 797,220-180-1478-E36
			Australia
			VK2FU (VK2FZ, opr.) 2,319,840-216-3580-B70
			VK3QJ 696,762-187-1242-B59
			AX3QV 133,920-80-558-A13
			AX5MF 76,224-64-397-B30
			VK3ARX 31,473-39-269-D5
			AX7KJ 19,569-33-198-B11
			AX3ASU (12 oprs.) 37,269-41-303-B20
			New Zealand
			ZL1AM 175,182-86-679-A11
			ZL1UA 51,984-48-361-B
			ZM3SL 20,832-32-217-A6
			ZL1AG 15,606-34-153-A7
			SOUTH AMERICA
			Chile
			CE3OE 815,332-148-1837-A42
			CE5FQ 55,044-44-417-B11
			CE2GK 28,194-37-254-A
			Uruguay
			CX2CN 597,480-130-1532-A28
			CX1JM 331,545-115-961-B
			Ecuador
			HC1TH 4,058,940-244-5545-F
			Argentina
			LU8DKA 2,024,568-182-3708-B58
			LU2FAO 694,467-153-1513-C
			Peru
			OA4LM 454,512-136-1114-F
			Netherlands Antilles
			PJ9GF (3 oprs.) 4,030,641-243-5529-C60
			Brazil
			PY3APH 626,340-143-1460-B26
			PY1DEF 22,274-37-214-B8
			Surinam
			PZ1AH 264,307-113-780-B
			PZ1CK 128,872-89-494-B14
			Venezuela
			YV4UA 2,701,327-257-3510-C46
			K4MUP/YV1 1,201,575-185-2165-A45
			4M7AV 1,019,502-209-1626-B52
			Paraguay
			ZP5GS 1,041,852-157-2212-B29
			ZP5OI 280,500-110-850-D18
			ZP5GJ 268,755-115-779-B17
			Trinidad
			9Y4VV 209,040-52-1340-B37
			9Y4MM (3 oprs.) 350,700-140-849-B20

(Continued on page 104)

DX Contest

(Continued from page 78)

Check Logs: (W/VE CW) W2CIY, W2EGI, W2MLO, WB2UDF, W3DS, W3EGN, W3IPS, W4JUK, WA4EYR, W5GB, W5IUW, KØHIL/5, W6UYE, W6ZS, W9DYG, VE3EU, VE7AJ, VE7AMJ, VE7WL. (W/VE PHONE) W1WY, W2EGI, W2MLO, W3DS, W3MDJ, WA4EYR, W9UEM/4, W5GB, W5MHT, KØHIL/5, W6GJV, W6HDP, W6UYE, W7GKV, WA7IOA, W8FTS, W9UKT, WØDVA, WAØELO, VE3FGV, VE6GN, VE6TP. (DX CW) AX5RX, DM2AUO, DM2BCF, DM2BYE, DM2CHM, DM2CUL, DM2CXN, DM3BE, DM3EBM, DM3TDM, DM4VXH, DM6MAO, F6ATE, HA2RB, HA3YGC, HA5AF, HA5DJ, HA5FA, KH6AQ, LA2KD, LA7XX, LA8RI, OH2AC, OH2BAC, OH3XZ, OH4RN, OK1WC, OK2AOP, OK3CAN, OK3CAU, OZ7YY, PAØMIB, SM5CPC, SM5UH, SM6BSM, SM7BUG, SM7DQC, SP2DVH, SP8-1079, SP9CTW, SP9ECH, UA1SW, UA3KAG, UA3RR, UA3UH, UA4SW, UA6KBS, UA6LC, UA6LU, UA9VK, UB5APK, UB5ES, UB5NS, UC2AT, UF6AA, UH8DC, UK1ACU, UK2PAF, UK3WAF, UK6AAA, UKØLAB, UQ2AS, UT5WW, UV3MM, UW3NE, UW4IK, UW6CV, UW9PT, UY5ZP, YO3JA, 3Z2BMM, 3Z5BCT, 3Z6AKK, 3Z9BNY. (DX PHONE) DJ3YU, DM2EDL, LA3PK, LA4CM, LA7V, OE1IA, OH6AA, OZ9CR, PY2GE, SM2COR, SM5GA, SM6BSM, SMØMC, SP8-1079, UA3OG, UA3-142-112, UA9AB, UQ2IL, UV3FD, UV3MM, and 5H3KJ.