

W0YC (WA0TWZ, at mike)

REPORTED BY

IN a year sparked with controversy, the November Sweepstakes was not entirely without exception. October, 1969, *QST* carried the surprising news that the low power multiplier was being dropped on a trial basis on the recommendation of the ARRL Contest Advisory Committee.

Shortly thereafter, comments began being received from the field. Membership reaction, as one might logically assume, ranged from enthusiasm to outrage. Suggestions for improvement followed the same pattern, some very well thought out, others completely unreasonable. They were, in all cases, noted and passed to the CAC for their consideration.

Elsewhere in this issue you will find a detailed report by the ARRL Contest Advisory Committee regarding the 1969 Sweepstakes. I join you in hoping they will arrive at what will be an equitable solution for all.

Getting back to the business on hand, I'm sure you're all wondering how you placed in this year's Sweepstakes. If so, the pages to follow should be of considerable interest.

The 36th ARRL November Sweepstakes saw a total of 1750 entrants, down somewhat from the previous year. Of these, 970 chose cw while 780 entered the phone section. Awards are scheduled for an April 15th mailing.

The next major event on the activities calendar is Field Day. All set? If not, now's the time to give it some serious thought. Rules will appear next month. C U then!

* Communications Assistant, ARRL.

TOP TEN

Each year there are a number of outstanding signals to be heard in the November Sweepstakes. This year's elite include:

C.W. Single operator: W6RW (W6DQX,opr.) 121,525; W8SH (K1ZND,opr.) 118675; K2KIR 118,457; K6EBB (W6CUF,opr.) 118,144; K4GSU 118,104; K6AHV (K9ZMS,opr.) 116,950; K2KTK 116,194; WA7KUU 113,176; W7DI 112,470; W4KFC 110,950. **Multioperator:** K5LZO 152,550; WA7IFD 109,770; K0GXR 81,918.

Phone. Single operator: K9LBQ/7 156,252; W5RUB 142,672; K6UYC (K9ZMS,opr.) 142,266; W5QQQ/7 140,503; W5JAW 137,048; W8SH (K1ZND,opr.) 136,150; WA0EMS 135,712; K4BAI 132,202; W3AZD 130,600; K8DOC (WA8LEO, opr.) 128,908. **Multioperator:** K5LZO 183,076; K0UKN 147,448; WA7IFD 121,984.

Special congratulations are in order for K9LBQ/7 and W6RW (W6DQX,opr.), Top Ops on phone and cw, respectively. A word of praise also for K1ZND, K9LBQ/7 (also WA7KUW) and K9ZMS whose outstanding efforts placed them in the Top Ten both modes.

It should also be noted that K5LZO, leading Multioperator entries both modes, managed over 1200 QSOs on phone in a truly outstanding effort.

Novice News

Each year the increased operating abilities of our newcomers become more and more evident. Leading some 100 entrants in 1969 was WN9AJP, Jeffrey, with a score of 23,520-208 QSOs-60



AL NOONE,* WA1KQM/WB6SAZ

VE2BVY

sections in 16 hours of operation from the Wisconsin section. Thirty-two additional section awards are scheduled for mailing to Novice winners as follows: WN1s KRX/1, LJD; WN2s DRS, EPT, JAM and LJS; WN3s MDY, MHF; WN4s LHO, LKC, LZK/4, NRL, NVM; WN5s WKV, YLM, ZRB; WN6s CAD, CEI, EIM, HSI, NYT; WN7s IWU, MEO; WN8s DGH, EQH, EUN; WN9s AIO, ZKL; WN0s AAZ, VFJ, YJW, YLQ.

SOAPBOX — Phone

Where did the linears suddenly come from? — W3ZNF, Del. Happened to call CQ on a New England Net and mentioned I needed Vermont. Sure enough, there was WA1GKS - Vt.! — K3LWR/3, EpA. The SS exchange is too long and useless for this type of contest work. — W3AZD, MDC. We finished a brand-new antenna farm 5 minutes before contest began, then lost time because we were so exhausted we slept in. — WB2DRG, SNJ. Operation was intermittent due to E. Murphy. — WB2HUA, WNY. TVI is nothing . . . 40 fraternity brothers complaining about CQ SS on their stereo systems . . . that's something. — WA3COJ/3, WPA. Great SS, had a lot of fun. Where was Hawaii and W.I.? — WA9WPO, Ill. Sure wish we could have gotten one of our 75 meter antennas to work. — WA9QEI, Ind. Had more trouble working W6s than KZ5. — WA9ZCP, Wisc. The CQ wheel really helped save my voice for Sunday morning. — W0AIH, Minn. One WA5 got hysterical when I answered his CQ South Dakota for SS. — K0ZTV, SDak. We need to make check sheets larger. — WA5RTG, Ark. My first SS ever and it was great. Also confusing, hectic and noisy. — WB4KTR/5, La. Keep up the great contests, they

get better all the time. — WB4OQR, Tenn. First clean sweep in 21 years of hamming. — W8DQL, Mich. Gave up trying to hold a frequency with my peanut whistle. — WA8TKM, Ohio. Disaster struck as the beam stopped working, the final went and the audio was a fraction of what it should have been. Murphy, why now? — W1BGD/2, ENY. With a venerable check year of '34, I guess you have to get used to people calling you "sir" in the SS. — W2LEJ, NLI. Operating competency of participants outstanding. — W2MB, NNJ. Knew I was "Qed" up when I worked W0QQQ, WA5QQQ and W5QQQ/7 — three of four QSOs in a row. — K1KPQ, Conn. Look for me next year from KZ5 — WA9NSR/1, EMass. Recommend additional points for KH6, KL7, KZ5 and VE8 QSOs — W1IXL, NH. How about that, I was a pile-up — WA1JFG, RI. Your contest message getting to be a ridiculous length. — W7GKF, Mont. Last SS for the next 4 years, leaving for the Navy. — WA7JOG, Oreg. Would like to be able to QSO same station on different bands. — K7INE, Wash. See you next year, if my wife doesn't shoot me first. — K9VER/7, Nev. Where were the W1s, didn't hear anybody north of Connecticut. — WA6CPP, SJV. Made last minute phone call to K1GAX in Maine but found out next morning we had worked it for the Clean Sweep. — WA6CRI, SCV. I thought my ears were playing tricks on me when I worked KH6GMP and KH6GPM on successive contacts on the same frequency. — W0BBWJ, Colo. Since Wyoming is no longer a rare one, thinking of packing up and moving to Idaho next year. — WA7EWC, Wyo. How ironic that I couldn't hear anyone in my own section. — W4KMG, EFla. My first attempt at SS, had lots of fun. — WB6FRD, L.A. A great contest, wish I could have given it full time. —

K6YNB, Org. First attempt at the SS, but believe I did make a few happy with the Maritime section. — VOIAW, Mar. First SS, looking forward to next year. — VE5AA, Sask. First SS since 1949, sure nice to get in the swing again but sure need practice. — VE6FK, Alta. Operated out of our Centennial Club Station. Condx poor, just turned good when had to go to work. — VE8NWT, NWT.

SOAPBOX — C. W.

I know I can do better if I had 40-meter operation! I really enjoyed the contest. CU next year! — WA3HOM, EPA. Never did hear Me, Vt, cw or phone. Must have all come to DC for the Moratorium. — WA3LKH, MD. O, where O, where is SNJ? — K2QPN, SNJ. Everything in the world went wrong with the rig. — WA2ICU/2, WNY. Great fun, but hard on the seat of the pants. — W3QEI, WPA. Fifty miles from Vt — no Vt in log! Early skiing? — W2KJ, ENY. My new XYL (3 months) got her first taste of hamming. Still haven't figured out whether it was good or bad. — WIDYE/2, NLI. My first SS as Clergyman coincided with my first wedding as a Clergyman. — WA2LDX, NNJ. First SS I ever worked all sections, a real thrill. — W9LKJ, ILL. Enjoyed the contest very much and will be back next year. Many thanks to ARRL for taking care of amateur radio. — WA9WMT, IND. How about a QST article some time describing the job of tabulating and checking contest results? Believe all participants in contests would enjoy hearing about your job. — W9HE, WISC. Very wild contest. — WA5SOG, ARK. A real great contest and what a way to improve your code. — W8IHE/5, MISS. Enjoyed the grind — be back next year but don't ask me why, hi! — K4SXD, TENN. Second time in the contest, enjoyed it immensely. Surprised how broad a 400 Hz filter could seem. — K7BOY/0, MINN. My first SS contest. Not bad. — WN0WVX, SDAK. I was generally pleased with the SS. Most operators were very courteous! — K4CRB, KY. That dumb alarm clock didn't go off again so missed a few hours. — WA8ZDT, MICH. Now I know why Murphy is the most feared name in contesting. — W8WPC, Ohio. I was disappointed that I couldn't work at least 68 sections this year with my 8 watt 20 meter rig. Maybe next year I'll put the antenna outside. — W0QZR, IOWA. Where were VE1 and W.I.?? —

K0BWI, KANS. I'll trade you three VE8s and a VT for an ARK!! WA0EMS, MO. Heard on the bands: "What's going on in Conn? Everyone I hear has over 400 QSOs" — attributable to a WB2. — K1GUD, CT.

LED SECTION BOTH MODES

(Boldface = over 100K each mode)

W2PAU	W5JAW	W8SH
K3HKK	W5RUB	W9YB
W3NKI**	WA6IVN	K0ZTV
WA3KDQ**	WA6LXN/6**	W0SOE**
K4BAI	WB6TOJ**	WA0CVS
W4KFC	K7WWR	WA0EMS
W4UHI	WA7IFD**	KL7JDO
K5LZO**	WA7KUW*	VE3UOW**
VE5AA**		VE5US

*K9LBQ/7 -Phone
**Multioperator

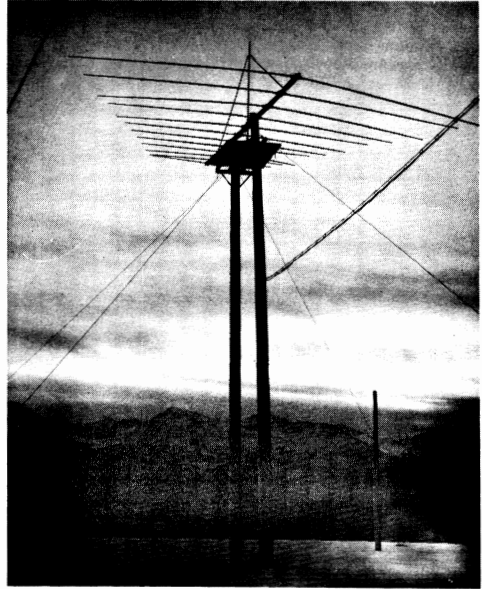
Affiliated Club Competition

Each year an engraved coco-bolo gavel is awarded to the ARRL-affiliated club whose members amass the largest aggregate scores. For the 5th consecutive year, the *Potomac Valley Radio Club* has successfully outclassed all who sought to dethrone them. This year's big guns were W4KFC on cw and W3AZD on phone. Victory was not easily attained, however, as close on their heels was Connecticut's *Murphy's Marauders* finishing a strong second; an exceptional feat considering this was their second SS entry. Taking honors were W1BGD/2 on cw and K1THQ on phone. Third place goes to the *Indian Hills Radio Club* of Ohio with W8QXQ taking Club Awards for both modes. The only other score over a million was that of the *Minnesota Wireless Association*. Their Club Champs were K0ORK on cw and W0AIH on phone.

DIVISION LEADERS

C.W.			Phone	
Single Operator	Multi Operator		Single Operator	Multi Operator
K2KIR	W3NKI	Atlantic	W3AZD	W3GN
W9RQM	W9YB	Central	W9YT	W9YB
K0ORK	W0HSC	Dakota	W0AIH	WA0DGW
K4PUZ	W5YM	Delta	W5RUB	WA4UCE
W8SH	WA8LVT	Great Lakes	W8SH	K8RMK
W1BGD/2	W2SZ	Hudson	W2MB	WA2PXB
WA0EMS	K0GXR	Midwest	WA0EMS	K0UKN
W1BPW	W1MX	New England	K1PKQ	WA1JUY
K7WWR	WA7LFP	Northwestern	W5QQQ/7	WA7BKW
K6EBB	W6BIP	Pacific	WA6IVN	WB6TOJ
W4KFC	WB4KPD	Roanoke	W4KFC	WB4FDT
WA7KUW	WA0VPQ	Rocky Mtn.	K9LBQ/7	W7OHR
K4BAI	WB4IQD	Southeastern	K4BAI	WA4ECY
W6RW	WA7IFD	Southwestern	K6UYC	WA7IFD
K5YAA	K5LZO	West Gulf	W5JAW	K5LZO
VE7BDJ	VE5AA	Canadian	VE5US	VE5AA

Our 49th and largest state was ably represented by **KL7AIR**, the Elmendorf AFB club station. Shown operating is **KL7GCV**, Kramer, with **WL7GQD**, Ron (now **KL7**) assisting. Their QTH, a rare compromise of natural beauty and a highly desirable radiating system.



AFFILIATED CLUB SCORES

<i>Club</i>	<i>Score</i>	<i>Entries</i>	<i>C.W. Winner</i>	<i>Phone Winner</i>
Potomac Valley Radio Club	3,510,413	81	W4KFC	W3AZD
Murphy's Marauders (Conn.)	2,798,913	64	W1BGD/2	K1THQ
Indian Hills Radio Club (Ohio)	1,299,337	24	W8QXQ	W8QXQ
Minnesota Wireless Association	1,037,218	27	K0ORK	W8AIH
Central Michigan Amateur Radio Club	824,899	23	W8SH	W8SH
128 Contest Club (Mass.)	656,385	13	(K1ZND,opr.)	(K1ZND,opr.)
South Jersey Radio Association	547,094	26	W1BPW	K1KDP
Radio Club of Tacoma (Wash.)	542,599	24	W2PAU	W2PAU
West Valley Amateur Radio Club	381,973	15	K7VPF	W5QQQ/7
Columbus Amateur Radio Association (Ohio)	352,095	10	W6CSN	W6UHF
Nittany Amateur Radio Club (Pa.)	346,549	14	W8SAKW	W8SAKU
Suffolk County Radio Club (N.Y.)	325,346	10	K3HKK	K3HKK
Connecticut Wireless Association	293,156	8	K2AU	W8ZUZU
Ozaukee Radio Club (Wisc.)	232,923	12	W1BIH
West Park Radiops (Ohio)	221,042	11	W9NYJ	WA9YBM
Miami Valley Amateur Radio Contest Soc.(Ohio)	206,140	13	W8AJW	K8CFH
Boeing Employees Amateur Radio Society (Wash.)	199,346	14	W8WPC	K8BPX
Westside Amateur Radio Club (La.)	193,378	6	(K8BPX,opr.)
Massillon Amateur Radio Club (Ohio)	185,035	6	WA7JCB	WA7JCB
Oak Park Amateur Radio Club (Mich.)	170,608	8	W5EKF	W5MQ
Hamfester's Radio Club (Ill.)	146,957	5	W8VYU	K8EKG
Richmond Amateur Radio Club (Va.)	142,200	12	WA8ZDT	W8ZDT
Arapahoe Radio Club (Colo.)	133,178	4	W9AA/9
South Hills Brasspounders & Modulators (Pa.)	83,539	3	(WA9YZX,opr.)
Walton Radio Association (N.Y.)	78,793	8	W4ZSH
Northern Chautauqua Amateur Radio Club (N.Y.)	78,617	4	W8FVG	W0LRN
Penn Hills Amateur Radio Club (Pa.)	71,301	3
Queen City Emergency Net (Ohio)	69,107	3	K2RIP
Louisville's Active Radio Operators (Ky.)	67,047	3
Denver Radio Club (Colo.)	63,690	3	K4FU
Johnson County Radio Amateur's Club (Kan.)	60,738	6
St. Joseph High School Amateur Radio Club (Ohio)	57,352	4	K0PFV	K0BHM
Lake Success Radio Club (N.Y.)	40,587	9	W8BZK
Bronx High School of Science Radio Club	39,808	5	W2MN	W2MN
Chicago Radio Traffic Association	38,942	3	W8ZDY
Villanova University Amateur Radio Club (Pa.)	12,468	4	W9REC

THIRTY-SIXTH SWEEPSTAKES CONTEST

Scores are grouped by Divisions and Sections. . . . The operator of the station first-listed in each Section is the award winner for that Section unless otherwise indicated. . . . A indicates dc input power up to and including 150 watts, B over 150 watts. . . . The total operating time to the nearest hour, when given for each station, is the last figure following the score. . . . Example of listings: W3GAU 65,400 461-70 B17 or final score of 65,400 number of contacts 461, number of sections 70, dc input power B, total operating time 17 hours. . . . An asterisk denotes a Novice certificate winner; double asterisk indicates a Hq. staff member, ineligible for award. Multi-operator stations are grouped in order of score following single-operator station listings in each section tabulation.

C.W. SCORES

ATLANTIC DIVISION

Delaware
W3GAU 65,400 461-70 B17
WA3KQD (6 oprs.)
18,963 195-49 A24

Eastern Pennsylvania

WA3DSZ 101,492 679-74 A22
K3HTZ 73,072 502-72 B23
K3LWR/J 63,616 448-71 A24
WA3JLD 44,354 331-67 B24
WA3HOM 43,056 312-69 B24
K3HNP 39,012 280-68 B16
W3ABT (WA3GVY, opr.)
33,885 315-55 B18

W3ARK 23,600 200-59 B11
WA3ATX 22,512 168-67 B11
W3CNS 17,876 220-41 A14
WA3LMO 14,650 146-45 A11
WA3LVR 13,052 213-32 B15
W3FTG 13,200 132-50 A09
WA3IYC 10,304 161-32 A15
K3RFB 8,392 84-44 B10
W3ADE 5,800 100-29 A11
W3HMR 5,440 80-34 B07
WN3MHF* 4,884 71-37 A20
WA3JRV 3,828 68-29 A06
W3GRS 3,700 50-37 A
W3CEI 2,736 57-24 A08
WA3MIB 2,548 51-26 A07
WN3MRF 1,960 42-28 A16
WN3LUA 1,176 28-21 A13
W3MPL 1,120 28-20 B04
WA3HFB 192 11-09 A04
K3RDM 2 1-01 A
W3YIP (K3RDM, opr.)
2 1-01 B

W3BIP (+WA3JYB)
59,422 407-73 B22
K3IAM (+K3HU4)
36,716 274-67 A24
WA3GAP/3 (4 oprs.)
7,416 103-36 A21
WN3LAR/3 (+WN3LYC)
4,026 64-33 A20

Maryland-D.C.

W3CRE 103,784 704-73 B23
W3IN 95,176 655-72 B24
W3GN 87,625 579-75 B24
W3GRF 71,890 515-70 B15
W3AEL 61,200 450-68 B
K3NPV 60,714 409-73 B
W3MFF 57,936 426-68 B20
W3E2T 57,736 395-72 A20
W3ZKH 57,408 417-69 B19
W3MWB 49,500 375-66 B15
W3DVO 47,360 370-64 B23
W3EAX (WA3IAQ, opr.)
47,002 337-71 A22
W3FA 43,900 325-66 B18
WA3LKH 42,840 315-68 B15
WA3GUI 41,544 364-56 B14
WA3GYH 38,619 307-63 B23
K1LPL/3 36,722 301-61 B08
W3CSZ 31,172 248-63 A12
K3CKT 24,676 199-62 B10
WA3FCK 21,412 203-53 B17
K3JYZ 19,200 150-64 B07
K3EVB 16,219 167-49 A13
W3AWN 15,800 158-50 B15
WA3LXL 15,600 157-50 A21
W3AXW 14,725 153-45 B07
WA3EOQ 11,664 162-36 A14
W3AGLQ 10,455 128-41 A15
W3TN 9,295 119-35 A15
W3C3GE 9,284 99-43 B05
WA3LIO 7,600 110-30 A18
WA3LEH 6,220 75-36 A09
K3TEZ/3 4,016 58-26 B12
K3KMA 3,900 65-30 B10
W3FBE (W4TFX, opr.)
3,190 55-29 A06
W3LUL 3,102 47-33 A04
W3FSR 2,828 51-28 B04
WA3TJ 2,376 55-22 A17
W3HH 2,016 36-28 B06
K1ANV/3 1,002 1-01 A

W3MJA 320 16-10 A02
W3RIL 2 1-01 A
WN3MJZ 2 1-01 A
W3YK (+WA3BCQ)
29,232 233-63 A19
W3PWO (+WA3JYV)
6,720 83-42 A12
W3TOS (+WN3MLI)
4,712 79-31 AB21

Southern New Jersey

W2PAU 59,086 465-63 B22
W2FY5 35,778 267-67 A18
WB2ZPB 30,660 210-73 A14
K2OPN 23,275 204-55 B14
K2PZF 23,200 200-58 A09
W2BUVB 13,992 132-53 A10
W2EA 9,800 130-38 B11
W2PU (K8JLF, opr.)
7,700 88-44 A03
K2VU 1,188 27-22 B07
WA2BPL 1,002 1-01 B01
WB2VLD 936 26-18 B08
WN2JII 560 21-14 A07
K2ZOM/2 2 1-01 B01
W2REB (+K2PWV)
31,300 303-50 B19

K2AA/2 (K2ZOM, WA2FVU,
WB2WRP)
15,096 148-51 B16

Western New York

K2KIR 118,457 805-73 B24
K2KTK 116,194 789-73 B24
W2BCPQ 58,280 462-64 B23
W2DICAL 50,028 379-66 A24
W2DIO 41,984 330-64 A23
WA2DHS 37,120 262-70 B18
WB2FWS 35,380 306-58 B20
W2TEF 30,807 246-63 B15
W2W 27,136 198-66 B15
WA2BCK 22,018 170-62 B13
K2UBC 20,853 168-63 A21
WB2ZOW 17,346 177-49 A13
W2FR 16,296 121-64 B09
WA2ICU/2
16,040 160-47 A15
W2MTA 14,464 102-66 A13
W2DIZ 10,395 117-45 B08
WA2GXN 10,027 136-37 A
WB2GHI 9,928 146-34 A10
WN2LJS* 6,600 88-40 A23
WN2HIJ 4,968 73-36 A22
K2KHK 4,760 85-28 A06
WA2BEX 3,120 53-20 A02
K2EZK 2,800 50-28 B05
K2SHM 2,280 60-19 A07
WB2LRE 1,660 45-20 A06
W2DXW 1,558 41-19 A10
W3CBI 1,515 51 B08
WN2LCC 988 32-17 A22
K2TMG 812 29-14 A05
WA2IOH 576 24-12 B04
WN2LEZ 432 21-12 A14
WB2VNB 396 18-11 A08
WN2LNB 161 14-07 A09
K2ZWI (WB2s DNN VGH,
WA9MWF)
56,616 437-64 B24
WB2ITD (+WA2EQ)
11,664 122-48 A15

Western Pennsylvania

K3HKK (K3AHT, opr.)
96,040 660-72 B24
WA3IXN 86,536 597-72 B24
W3UT 50,572 367-68 B22
K3VXV 44,980 346-65 AB18
WA3KOS 42,840 315-68 A15
WA3JQU 42,273 340-63 A24
WA3IY 34,306 273-61 B20
WA3JIJ 31,464 238-64 B20
W3NEM 16,812 134-59 A09
WA3GJU 13,260 170-39 B04
K3EXE 12,360 208-30 A14
WA3KMA 10,920 137-42 A16
WA3KQA 8,686 101-43 B11
W3QEI 8,400 100-42 B11
WA3GZQ 6,460 85-38 A09
WN3MDY* 4,332 58-38 A
W3C 4,138 50-32 A06
WN3KMY 3,246 63-27 A14
WA3HSR 2,808 54-26 A06

W2CZ/3 2,461 54-23 A05
WA3HSE 1,918 31-18 A06
WA3JBN 1,560 21-14 B02
WA3NIO 756 28-14 A04
K3AKR 630 23-14 A03
WN3MPD 261 17-9 A05
W3NKI (WA8s PFX VXP,
WA9PKXJ)
64,158 437-74 B24
WA3MQJ (3 oprs.)
44,948 333-68 A24

CENTRAL DIVISION

Illinois

W9LKJ 100,300 664-75 B23
WA9QBM 100,016 669-74 B24
WA9LUD 73,803 607-73 B22
W9LNO 67,600 444-75 A20
WA9SOE 62,307 506-63 B19
W9FVT 39,576 291-68 A20
W3RIL 2 1-01 A
K9DUA 28,203 277-51 B17
K9IUV 23,970 235-51 A16
WA9VIU 21,546 200-54 B18
W9REC 19,908 158-63 B15
W9VY 15,198 156-61 B07
WA9QMB 14,644 156-47 B17
WA9UOT 14,382 155-47 A13
WB9AJV 13,872 146-48 B15
W9HPG 13,238 106-58 A11
WA9ZXE 12,361 138-47 A20
W9RCJ 10,952 74-74 A11
W9EY 8,840 112-35 A05
W9KXN 8,487 112-41 A16
WA9YLD 8,200 100-41 AB1
WB9AJB 6,460 95-34 A13
W9WR 5,796 63-46 B12
WA9UMZ 4,772 78-37 B08
WN9AIO* 4,818 73-33 A20
W9KXW 4,050 75-27 A11
W9YYG 4,032 63-32 B02
WA9ZFQ 2,856 74-21 A18
WA9ZDO 2,772 51-28 A10
WN9APL 2,520 42-30 A11
W9ZEN 1,620 45-18 A06
K9RYV 1,364 31-22 A09
WA9WVJ 1,200 30-20 A04
WA9ZPL 1,084 06 B-1 B17
K9IFO 1,026 29-18 A03
W9ZPC 806 25-16 A06
WN9AOF 594 32-11 A20
WA9FGX (5 oprs.)
24,476 218-58 B24
WA9SIP (5 oprs.)
11,137 134-43 A24
WB9BPW (4 oprs.)
1,672 39-22 A18

Indiana

K9CUIY 74,692 539-71 B24
K9TOR 34,928 306-59 B15
K9DVK 33,735 260-65 A18
W9FC 15,000 150-50 A06
W9QLW 10,400 100-52 B09
WA9VYJ 10,340 118-44 A14
W1DRN/9 9,750 125-39 B06
K9KRN 6,666 102-33 A09
WA9WMT 4,380 65-26 B08
WN9ZKL* 3,132 57-29 A15
WA9UFO 1,924 40-26 A08
W9YB (5 oprs.)
50,116 386-67 B24

Wisconsin

W9RQM 105,171 715-73 B24
W9YT (WA9TPV, opr.)
97,944 666-73 B24
K9CAN 79,950 533-75 B22
W9HQH 72,227 520-69 B22
W9NYJ 63,716 469-68 A24
W9HRE 53,760 384-70 A21
W9REE 37,808 278-68 B16
WA9OMO 34,068 258-68 B14
WN9AIP* 25,524 208-60 A16
W9LUM 20,126 174-58 A14
WA9PTU 16,582 159-49 A15
W9RRTU 13,000 128-52 A07
W9GIL 10,164 77-66 B
WA9YUZ 9,476 103-46 A20
WA9YBM 8,800 110-40 B15
W9EWC (WA9AQW, opr.)
8,658 111-39 B04
W9CTI 7,626 95-41 A14
WN9BJR 3,172 63-26 A23
WN9BGJ 2,400 49-25 A19
W9LMO 1,040 26-20 A07
WA9RTU 990 33-15 B05
W9AOE/9 990 33-15 A04
WA9WKJ (WA9OMO, opr.)
50 5-05 B01
WN9BWH 4 2-02 A11
WA9UHM (+K9ZUI, WA9AWO)
31,180 258-60 B15
W9KTL (+WN9SQT)
1,890 234-45 A23
WN9BBC (+WN9BJX)
612 31-12 A17

DAKOTA DIVISION

Minnesota

KØORK 106,150 701-75 B23
KØIUL 79,767 544-73 B24
KØZXE 72,854 486-74 B24
WØIYV 53,724 410-66 B18
WØIAW 52,819 379-69 A16
KØCNC 53,524 381-67 B16
WØKUCS 44,380 318-70 A21
WØKDU 35,855 254-71 A21
WØQXT 35,612 314-58 B16
WØQTF 25,024 215-56 B13
WØQXA 23,512 201-56 B13
WØQWB 19,544 175-56 A14
WØQNT 18,867 170-57 A15
WØQRXM 17,480 191-46 B13
WØTIV 13,420 122-55 B08
WØPHZ 11,607 110-53 A14
WØPUAS 10,710 120-45 A15
WØVVDG 10,170 115-45 A14
WØPAN 9,712 100-44 B08
WØTGM 8,000 100-40 A06
KØTFP 7,839 101-39 B10
WØQEK 6,615 95-35 B12
WØQVOV 6,006 72-42 B06
WNØYLO* 5,735 78-37 A13
WNØZOP 2,652 51-26 A18
WØQA (WØBE, opr.)
1,408 43-28 A
KØBFT 1,992 44-24 A07
WØVIS (+WØSVPK)
53,088 383-68 A24
K7BOY/Ø (+WØQTSW)
44,800 361-64 B23
WØYQ (4 oprs.)
40,872 318-64 B21
WØQVPN (+WNØZEO)
6,600 101-33 A22

North Dakota

WØQRSR 5,184 74-36 B14
WØHSC (WØØHYI MJF SVW)
60,233 455-67 AB24

South Dakota

KØZTV 53,298 423-63 A21
KØWNV/Ø 32,949 266-63 B24
WØQLYO 14,880 159-48 B18
WØQOM 5,439 79-37 B21
WNØVWX 1,311 38-23 A08
WØQSHA 1,040 5-04 A02



Bruce, K8VAK, shown operating cw to the tune of 189 QSOs in 35 sections. Not bad considering all that fierce Ohio competition.

WA3GZT 11,172 99-57 B12
 W3ML 8600 100-43 B05
 W3ULU 4588 62-37 A08
 W3HH 3500 50-35 B06
 W3HVM 2800 50-28 B03
 K3ZOL/3 2520 60-21 B07
 W3GRF (K1ANN, opr.) 2428 34-21 B01
 W3CSZ 2156 49-22 A03
 WA3GUI 1319 15-11 B01
 W3EAX (WA3IAQ, opr.) 1190 35-17 A04
 W3GN (+K1TKS, WA9IYX) 96,256 66S-72 B24
 W3ADO (10 oprs.) 93,325 621-75 B24
 WA3DJQ (4 oprs.) 24,184 207-56 A24
 W3PWO (+WA3JYV) 9696 101-48 A08

Southern New Jersey
 W2PAU 60,214 419-71 B19
 WA2DVU 42,780 345-62 B15
 K2PZF 37,084 255-73 B19
 WB2UVB 34,456 246-68 A23
 WA2BPL 29,250 227-65 B17
 W2UCV 24,420 185-66 A14
 W2FYS 21,320 164-65 A16
 W2ITG 17,580 147-60 B
 W2ORA 14,560 112-65 A16
 K2QPN 14,724 150-64 B09
 WA2EMB 7267 85-43 A05
 W2EA 5400 100-22 B09
 WB2VMD 2760 40-22 A10
 W2EPA (+WA2IUF) 55,545 407-69 B22
 WA2LLN (+WA2IUG) 39,630 308-65 A09
 W2REB (+K2PWV) 30,200 292-50 A20
 WB2DRG (+WB2FEH) 22,656 236-48 B15
 K2ZOM/2 (5 oprs.) 22,336 191-56 A19
 K2AA/2 (5 oprs.) 22,306 201-53 A22

Western New York
 WA2CPQ 66,397 502-67 A24
 W2DIZ 63,480 463-69 B23
 W2SEX/2 (WB2OEU, opr.) 45,724 423-71 A20
 W2VDX 43,575 292-75 B23
 K2RIP 33,165 305-55 B20
 WA2CAL 31,600 300-51 A21
 WB2VVZ 24,976 223-56 A17
 K2DTQ 23,920 289-40 B23
 WA2GCX 22,790 215-53 B10
 WA2AWX 19,344 186-52 A16
 W2TMI 11,856 115-52 A12
 WA2EQA 7357 84-39 A10
 K2KQC 6160 88-35 B09
 WB2HUA 5032 68-37 A15
 W2EWO 4712 62-38 B04
 K2BRW 3276 42-39 A11
 WB2YQO 3066 73-21 B02
 WA2ICU/2 1297 14-11 A04
 WA2IQH 1152 36-16 A04
 WA2BSG 1132 11-6 A05
 WA2WMT (+WB2AIO) 84,630 605-70 B24
 WA2BCK (5 oprs.) 83,244 562-74 B23
 K2ZWI (WB2S DNN VGH, WA9MWF) 52,667 433-61 B22
 WB2ZOW (+WB2IPY) 21,228 174-61 A17
 WB2RHH (+WN2KHM) 15,184 146-52 A17

Western Pennsylvania
 K3HKK (K3AHT, opr.) 83,437 572-71 A22
 K3AKR 45,738 347-66 B20
 W3ACOJ/3 45,124 389-58 A23
 WA3EJG 36,772 317-58 A14
 WA3JBN 19,470 165-59 B09
 WA3JGY 18,584 157-56 A13
 W3SMX 17,160 156-55 B17
 WA3JUV 17,146 207-39 A20
 WA3IQU 15,768 148-54 A18
 W3NEM 13,390 105-59 A10
 W3CN 13,180 145-42 A12
 WA3JYN 11,328 119-48 A16
 W3QEI 7875 113-35 A15
 WA3LJW 6880 82-43 A16
 WA3GBT 6840 90-38 B08
 W3JUH 5548 73-39 B16
 WA3KOS 3927 60-33 A03
 W3SDY 832 26-13 A03
 W2ZCC/3 279 16-9 A03
 W3NKI (6 oprs.) 51,328 402-64 B24
 WA3JBP (+WB3MTH) 16,284 178-46 B22

CENTRAL DIVISION

Illinois
 WA9LUD 87,381 600-73 B24
 W9KVF 84,774 597-71 B23
 WA9OHT/9 77,384 569-68 B20
 W9QXO 47,804 352-68 B21
 WA9UMZ 39,360 328-60 B24
 WA9BLP 37,698 309-61 B15
 W9ZMR 36,055 310-57 B11
 WA9RPD 31,978 271-59 A16
 W9AA/9 (WA9YXZ, opr.) 31,012 248-61 A16
 WA9WPO 30,080 235-64 A20
 WA9NJB (K9MDO, opr.) 27,318 237-58 B11
 W9NLF 23,245 163-69 A15
 W9GYN 23,256 171-68 A23
 W9CRN 20,700 150-69 B16
 WA9GRK 19,695 152-65 B13
 W9YYG 17,576 169-52 B04
 W9LNO 16,800 120-67 B12
 W9GEX 15,042 164-46 A15
 WA9YNE 14,433 143-51 A10
 WA9DRE 10,900 111-50 B13
 WA9QBM/9 9436 114-37 B04

Indiana
 K9MMH 85,702 592-73 B24
 WA9UIR 21,874 213-49 A13
 W9UEM 19,908 163-58 A13
 WA9WBE 10,676 158-34 A4
 W9CXL 5940 66-45 B13
 WA9SBR 4452 53-42 B06
 W9FC 336 14-12 A01
 W9YB (4 oprs.) 75,210 545-69 B22
 WA9QEI (+WA9VDZ) 67,068 487-69 B23
 W1DRN/9 (+WA9LZC) 55,616 440-64 B21
 WB9ATL (7 oprs.) 21,840 210-52 B24

Wisconsin
 W9YT (K9KGA, opr.) 128,425 856-75 B24
 W9RQM 92,519 645-71 A24
 K9VGE 56,958 432-66 B16
 W9ZHE 41,344 323-64 B16
 WA9JMY 39,720 333-60 B22
 K9HFR 32,384 253-64 B16
 WA9VNB 32,248 252-62 B21
 WA9ETL 31,186 254-62 B21
 W9KYZ 24,075 162-75 B17
 K9JPS 21,358 181-59 A14
 WA9YBM 20,910 205-51 A24

W9RXJ 17,952 176-51 B12
 K9REE 17,160 156-55 B11
 W9EWC (W9AOW, opr.) 14,852 158-47 B04
 W9NYJ 14,739 145-51 A11
 W9W9KJ 13,520 131-52 B09
 W9GIL 12,384 86-72 B
 K9BCB 11,124 104-54 B
 WA9TZU 10,240 128-40B-14
 WA9KBB 7600 100-38 A09
 WA9YUZ 6084 78-39 A15
 WA9ZCP 5360 67-40 A04
 WA9UIH 4680 65-36 A06
 WA9RTU 4032 63-32 A06
 K9ZSR 2346 51-23 B04
 WA9OMO 1680 40-21 A02
 K9GTO 1280 40-16 A04
 W9NUW (WA9VHS, opr.) 336 21-5 A06
 WA9WKJ (WA9OMO, opr.) 8 2-2 B01
 WA9ZEF (5 oprs.) 73,269 589-63 B24
 WA9UHM (+K9ZUI, WA9AOW, opr.) 49,770 364-70 B22
 WA9TPQ (+WA9WEZ) 23,220 203-55 A23
 WA9YCY (+WN9CHP) 10,062 129-39 B
 W9GQO (multi-op) 6084 85-36 A

DAKOTA DIVISION

Minnesota
 W9AIH 96,068 660-73 B17
 W9PAN 80,570 546-73 B24
 K9JIL 80,081 552-73 B23

South Dakota
 K9ZTV 57,084 402-71 A20
 WA9LYO 21,240 181-59 A12
 WA9S 18,840 171-55 A15
 WA9OML 12,600 127-50 B07

DELTA DIVISION

Arkansas
 WASRTG 96,141 668-73 B23
 WASVWH 63,920 471-68 B24
 WASIIS 63,475 417-75 B19
 WAS5OG 42,316 300-71 B14
 WASWTZ 20,736 194-54 B15
 K2UMO/5 11,650 118-50 B06
 WASUXW 6552 84-39 A13

Louisiana
 WASYBQ 44,512 428-52 A21
 W5MO 30,095 232-65 B13
 WB4KTR/5 5460 82-35 A23
 WASWCG 3968 64-31 B05
 W5OB 1518 35-23 B03
 WASQPA 810 27-15 B02

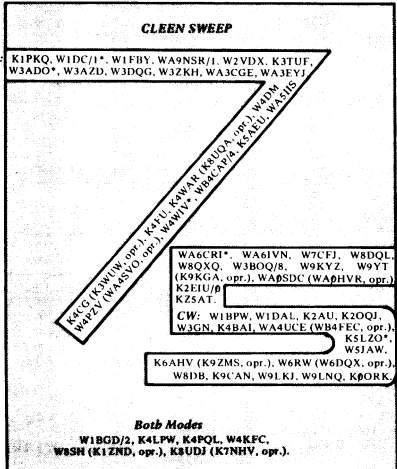
Mississippi
 W5RUB 142,672 970-74 B24
 K5AEU 101,025 679-75 B23
 K4ZDK/5 45,493 340-67 B19
 W5NCB 25,296 204-62 A20

Tennessee
 K4LPW 112,050 750-75 A21
 K4FUZ 102,230 703-74 B24
 K4AMC 78,610 574-70 B24
 K4LTA 70,140 501-70 B
 WA4WTO 63,360 446-72 B18
 W4SQE 44,200 300-72 B21
 WB4OQR 40,257 322-63 B18
 WB4HSS 31,088 232-67 A24
 WA4HJK 18,676 162-58 A18
 WB4CUL (WB4CUL, opr.) 17,800 163-60 B17
 W4VSV (WA4ZZU, opr.) 10,712 103-52 B08
 WB4JFT 10,652 130-38 A10
 WB4FNN 4960 80-31 B04
 WB4KYA 2288 44-26 B18
 WA4UC5 (5 oprs.) 74,370 503-74 B24

GREAT LAKES DIVISION

Kentucky
 K4FU 61,525 405-75 A20
 WANWT 4092 62-33 A04
 K4VX 3184 40-28 A06
 K4ZOR 1430 33-22 B02
 W4WIV (4 oprs.) 98,500 651-75 B24

Michigan
 WW8SH (K1ZND, opr.) 136,150 903-75 B24
 WB8DL 115,800 785-75 B22
 K8UDJ (K7NHV, opr.) 97,150 641-75 B24
 K8KJN 73,038 494-74 B24
 WA8ZDT 72,207 511-71 B24
 WB8EF 53,310 574-70 B24
 W8MNL 53,040 431-65 B22
 K8LJD 52,095 379-69 B19
 K8PAO 50,694 362-71 B22
 WA8VBY 34,800 260-65 A20
 WB8VRB 33,844 242-68 A21
 W8MPD 28,008 211-64 A20
 W8VWY 26,542 221-60 B16
 WB8AY 24,480 191-68 A13
 K8NOS 22,176 176-63 B17
 WA8TDY 22,000 176-60 B06
 W8VPC 20,552 188-52 B10
 K8ZJU 19,872 166-56 B13
 WA8LAY 19,470 165-59 A15
 WA8YB 13,122 139-48 A20
 WA8VZK 11,762 175-34 B08
 W8SVZ 10,692 122-44 B09
 WB8CSE 10,584 126-42 B15
 K8ZFL 8100 90-45 B08
 W8DM 7592 73-52 B08
 WA8ZZ 7412 109-34 A10
 K8BY 7004 103-34 A1
 K8JLJ/8 6320 70-38 B07
 4808 60-32 B09
 K8QOJ 4045 53-29 A03
 WB8AK 3753 70-27 B07
 WB8BD 2680 42-20 A05
 WB8NB 1564 34-23 B06
 WB8AZ 1560 39-20 B24
 WB8COW 1645 25-9 A02
 WB8ZA 1070 7-5 A01
 K8ETU 1008 4-1 A01
 WB8BE 850 25-17 B02
 W8VJC 2 1-1 A01
 WB8Z (+WB8S BLA BTU) 86,800 620-70 B24
 WA2IVA/8 (+K8UFT) 34,910 295-59 B18



WB8CIY (+WA3GBU) 28,094 221-62 A23
 WA8CQR (7 oprs.) 27,759 257-57 A24
 WA8VIF (+WBDDQF) 18,550 225-39 A20

Ohio
 K8DOC (WA8LEO, opr.) 128,908 871-74 B24
 W8QXQ 109,375 725-75 B23
 W3BOQ/8 95,100 637-75 B24
 WA8USP 82,180 587-70 B24
 K8CFH 75,480 510-74 B17
 WA8EB 64,584 468-69 B20
 WA8VBS 62,016 456-68 B19
 WB8AKU 60,400 453-66 B21
 WA8TKW 60,208 427-71 A19
 WA8TKM 45,850 345-65 A21
 WA8ZBU 44,640 310-72 B19
 WB8APJ 44,132 325-68 B24
 WB8CKI 40,330 286-69 B20
 WB8JH 36,030 283-62 A20
 WB8ALM 33,960 283-60 B13
 WA8TYF 31,243 249-63 B09
 W8VQI 29,832 226-66 B18
 W8IPA 29,394 207-71 A14
 W8MXO 27,554 187-71 B13
 K8BPF 24,624 216-57 B09
 K8EKG 23,940 194-63 A09
 W8DB 22,680 159-72 A11
 WB8AVH 22,562 195-58 A17
 WA8SLW 22,458 197-57 A09
 WA8MCR 17,400 150-58 B05
 WA8YXI 15,456 160-74 B17
 WA8ZNC 15,132 146-52 A12
 WA8SGV 14,616 116-63 B17
 WA8AJW 14,416 136-53 A08
 WA8FTW 13,442 143-47 B09
 W8DKI 13,384 129-48 B12
 WA8REN 12,087 119-51 A10
 W8SDV 9,620 130-37 A12
 WA8VEV 7,371 95-39 B17
 W8DZG 7,230 190-36 A12
 W8GMK 6,360 67-40 B08
 W8AQZ 6,162 79-39 B07
 WB8AYC 5,920 83-37 A14
 W8UPH 5,720 110-26 A05
 W8YHU 5,698 77-37 A06
 K8DHT 5,394 87-31 A05
 K8BSM 5,320 70-38 B04
 W8VZE 3,850 55-35 A04
 W8WUO 3,700 45-30 B
 W8WPC 3,451 60-29 B
 WA8VS 2,040 53-20 B02
 W8OYI 1,920 40-24 B04
 WA8YRS 1,800 50-18 A06
 W8EQG 1,488 31-24 A12
 WA8ZGC 1,008 2-2 B01
 WA8LVT 1,002 1-1 B01
 WB8ETK 972 27-18 A02
 K8RMK (+W4CIR) 106,552 734-72 B24

W2MQB 6970 85-41 B10
 W2INT 6567 100-33 A20
 W2ZPG 5992 64-39 B05
 WB2HTW 5888 93-32 B08
 WB2ZIN 4960 78-32 A08
 W2UAL 4448 70-32 B07
 W2DSC (WB2TUL, opr.) 4140 69-30 A04
 WA2DZH 3978 77-26 A11
 W2TUK 2184 42-26 B01
 WA2OVC 2056 33-16 A04
 WB2VIA 1248 39-16 A03
 W2NBI 1240 31-20 A03
 W2YKQ (W2TNI, opr.) 780 30-13 B03
 WA2EVB 2 1-1 A
 WA2PXB (WB2s DNV DNW) 53,444 443-62 B24
 W2AEE (WA2LNU, WA8SNT) 35,244 286-66 B20
 WA2EBJ (+W2MDM) 21,675 215-51 B11
 WA2GUL (4 oprs.) 16,400 166-50 A20
 WA2DFD (+WB2WXR) 16,006 151-53 A15
 WB2HKM (+WB2IEM) 15,608 166-44 A24
 W2JTZ (WB2EUG, WN2s DSD KVS) 13,500 150-45 A19

Northern New Jersey

W2MB 107,500 754-71 B24
 K2OQJ (WA2DMF, opr.) 83,344 564-73 B23
 WA2FYT 73,000 500-73 B24
 K2KHR 72,449 503-73 B22
 WA2BHJ 69,040 490-70 B22
 WB2IQF 32,592 303-56 B21
 WB2VPR 30,276 261-58 B18
 WA2EPI 26,832 312-43 B20
 WB2FWW 11,653 136-43 A06
 WA2CKU 11,520 145-40 A10
 W2JDH 5976 83-36 07
 WB2ZLI 5115 78-33 A07
 WA2EKX 2275 46-25 B05
 WB2VFX 2080 52-20 B04
 WA2EUX 1002 1-1 A01
 WA2BAN 242 11-11 B01
 WA2GUY 112 8-7 A01
 WA2BAN/2 40 5-4 B01
 WB2FCA (+WA2ZHZ) 49,792 390-64 B22
 WA2BLE (+WA2EIW, WB2IHL) 33,152 265-64 A22
 WA2FEC (+WA2HAD) 5768 103-28 A10

MIDWEST DIVISION

Iowa

WA0SDC (WA0HVR, opr.) 106,000 700-75 B24
 WA0QNF 17,334 162-54 A15
 WA0URY 11,055 168-33 B06
 K0YVU (+WA0QTE) 99,937 687-73 B24
 WA0RFS (4 oprs.) 38,999 331-59 A24
 WA0VJD (+WA0qs SLU VLU) 23,248 211-54 A24

Kansas

W0SEA 101,512 698-72 B24
 W0LXA 70,560 504-70 B22
 WA2HSP/0 16,800 168-50 B11
 K0BHM 15,010 199-38 B04
 K0PFV 10,166 112-46 A09
 W0SPF 8084 94-43 A09
 WA0VDO 884 26-17 A04
 W0SOE (7 oprs.) 79,390 586-67 B24

Missouri

WA0EMS 135,712 946-72 B24
 K2EIU/0 65,600 425-75 B15
 WA0VJN 35,620 290-60 A16
 K0GED 30,683 254-61 B14
 K0GJD 26,784 186-72 B10
 K0ETY 20,800 201-52 B08
 WA0YCN 20,298 199-51 A11
 WA0FRM 14,063 144-49 B14
 K0FTZ 8502 109-39 B05
 WA0ZNE 8040 102-40 B12
 WA0TKV (8 oprs.) 93,170 681-70 B24

Nebraska

W0URN (K9RHN, opr.) 84,064 611-71 B24
 W0WLO 56,250 426-65 B20
 WA0RKQ 40,235 310-65 B20
 W0KK 20,126 174-58 B11
 WA0LGS 18,054 153-59 A08
 WA0RKR 11,088 116-48 A12
 WA0QJK 3840 60-32 B06
 K9URK (6 oprs.) 147,448 1119-72 B24

HUDSON DIVISION

Eastern New York

K2BQO 79,378 559-71 B23
 W1BGD/2 67,000 441-75 B17
 K2RUR 54,810 476-58 B15
 WB2SIH 45,100 350-63 B
 K2MPS 39,690 317-63 B22
 WA2TNV 35,620 290-60 A16
 W2KZN 8977 96-47 B10
 WA2GQW 7632 159-24 A11
 WA2LPQ 6726 89-38 A14
 W2OC 120 12-5 B01
 WA2DFI (+WN2JEF) 17,976 217-42 A17

New York City-Long Island

WB2UZU 66,960 540-62 B15
 K2AU 54,144 378-72 B21
 WA2QEB 44,165 341-65 A20
 WB2EXS 43,264 338-64 A24
 W2LEJ 28,210 217-65 B17
 W2MN 25,920 203-64 B11
 WA2VDA 24,012 207-58 B14
 WA2EYQ 22,572 209-54 B14
 WA2HMM 22,360 215-52 B15
 WA2APO 22,330 206-55 A14
 WB2ZDY 16,440 137-60 B09
 W1DY2/2 13,521 137-51 A11
 WA2EBR 11,700 131-45 B14
 WB2DKZ 11,395 126-45 B10



Above are but a sampling of the many Novice entrants that could be found in the November '69 SS. They are (from top to bottom): WN2JAM, Peter; WN4NRL, David; WN6NYT, Gary, and WN0ZOF, Jeff.

NEW ENGLAND DIVISION

Connecticut
K1PKO 109,075 723-75 B24
K1THQ 107,361 745-73 B24
W1FBY**
 106,450 703-75 B24
K1VTM 99,494 668-74 B24
K1JHX 87,100 615-70 B20
W1CW**
 79,480 545-72 B23
K1GUD 71,720 520-68 B23
W1ETU**
 60,280 457-65 B19
K1DPB 55,128 401-68 B24
WB1BH 47,212 320-74 B12
W1TCI 47,020 384-60 B21
WA1JLD 38,818 287-66 A19
K1ASI 34,048 305-56 B24
W1LVQ**
 32,200 240-65 A16
K1OOQ 31,906 303-51 B14
WA1IQJ**
 27,660 311-43 A20
W1YYM**
 23,440 221-51 B06
K1LWC 22,848 231-51 B22
WA9HHH/1**
 19,027 180-53 B08
W1ICP**
 16,640 128-65 B11
WA1JYU 14,664 141-52 A09
WA1KQM/1**
 14,630 145-47 B08
WA1JXC 13,563 207-33 B21
W1DEP 9,948 139-34 B15
WA1HNR 9,025 161-25 A06
WA1JZC/1 9,256 98-42 A17
WA1DJG 8,300 100-41 A03
WA1HOL 6,180 74-35 B08
K1PQA 2,575 55-25 B15
WA1GFW 616 29-11 A02
W1IKE**
 18 3-3 B05
WA1FU/1 (+WB2B) 78,556 562-69 B19
W1FLM (+WA1KOC) 55,660 464-60 B24
WA1JAD (+WA1CJE) 18,720 209-45 A16
W1AW** (W1QIS, WA9HHH) 1944 54-18 B02

Eastern Massachusetts

K1LLU 79,632 562-72 B19
WA9NRS/1
 61,050 407-75 B21
WA1JMR 57,576 416-68 B24
W1BHV 43,267 290-73 B21
WA1EOT 41,032 278-72 A21
K1KTH 36,000 300-60 B06
WA1HOS 27,450 225-61 A13
W1AX 19,200 150-64 B
W1UYU 17,172 161-54 B14
WA1FRC 15,729 161-49 B14
W1OPI 15,070 137-55 B15
WA1JLF 12,692 167-40 B23
WA1KBZ 12,508 119-53 B19
WA1JYU 9,126 117-39 A16
WA1KAG 8,184 128-33 A10
WA1FCD 7,000 101-35 A17
W1PLJ 5,082 78-33 B07
WA1HAA 2,808 60-24 B04
K1CHY 2,625 53-25 A07
WA1FNM 1,110 37-15 B09

W1WMMH 18 3-3 B01
WA1JUY (4 oprs.) 89,784 624-72 B24
WA1KYJ (+WA1S HQB LGE) 35,090 308-58 B23
WA1KYK (4 oprs.) 23,500 236-50 A20
K1IPB (+WNIKSF) 8,151 105-39 B10
WA1KDL/1 (+W1TQP) 7161 118-31 A24
Maine
K1GAX 33,020 255-65 B12
WA1JFX 6040 131-20 A24
New Hampshire
W1IXL 82,524 598-69 B21
W1PYM 38,780 277-70 B17
W1BUT 36,600 301-61 B14
WA1JTM 3430 45-27 B02
K1CTQ (6 oprs.) 25,023 221-57 B24
Rhode Island
W1VPY (WA2LBT, opr.) 30,580 278-55 B12
WA1JFG 26,180 239-55 A17
W1BFB 23,085 203-57 B11
W1FLN 20,706 167-59 A19
WA1KZU 12,700 129-50 A15
Vermont
W1MRW 5110 70-30 A10
W1FS 260 15-10 A01
W1DC/1 (K1KNI, WA1S DRO EIH) 74,425 490-75 A24
Western Massachusetts
K1KDP 101,326 730-69 B24
K1NWE 82,584 558-74 A23
W1YK (WA1ABW, opr.) 82,056 596-68 A24
WA1IJS 29,140 315-47 B19
WA1HFF 28,608 300-48 A23
W1EZD 20,808 153-68 B12
WA1FBX 7360 92-40 A09
WA1ABW/1 1002 1-1 A01

NORTHWESTERN DIVISION

Alaska
KL7JDO 53,328 404-66 B12
KL7MF 728 28-13 A04
KL7AIR (KL7S GCV GFS WL7GQD) 24,840 207-60 B15
Idaho
W7CNL 49,100 372-65 A13
Montana
W7GKF 43,578 407-54 A16
W7TYN 31,536 292-54 A14
K7LTV/7
 21,472 177-61 A16
WA7IZR 8252 99-37 B16
WA7BKW (4 oprs.) 71,820 533-70 B23
W7NML (W7NML, WA7IQY) 27,918 212-66 B22
Oregon
K7WWR 24,482 199-59 A08

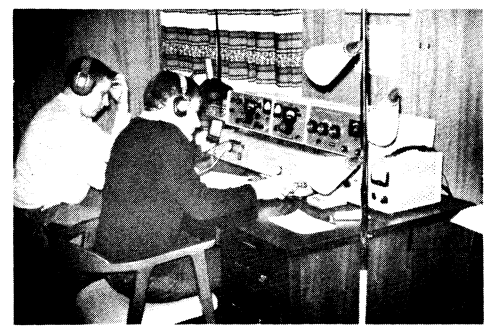
W7GVX 20,584 166-62 B14
WA7JOG 17,671 218-41 A07
WA7KWS 14,335 155-47 A14
WA7HL 10,293 111-47 A06
W7BFX 5550 77-37 A10
WA7JPE 5254 72-37 B10
WA7LDD (+WN7MUB) 51,888 415-69 B24
Washington
W5QQQ/7
 140,503 961-73 B24
 78,720 580-67 B23
WA7GWL 57,580 416-69 B22
WA7JCB 50,048 392-64 B21
WA7HPK 33,654 237-71 A15
WA7JPC 30,848 241-64 B17
W7NP 30,566 264-58 B17
WA7MJX 19,836 174-57 A20
K7AWB 18,525 165-67 B21
WA7IUL 16,016 143-56 A16
WA7FHG 15,738 129-61 A19
K7VPF 15,229 141-51 A12
WA7BSQ 9,744 102-48 A13
WA7GYR 8,932 102-44 A10
W7NG 8,800 100-44 B05
WA7LFG 8,692 106-41 A11
K7INE 8,160 91-40 B04
WA7IIR 7,956 102-39 A20
WA7ACQ 7,400 100-37 B06
W7EYU 6,280 80-40 A08
K7CZM 4,920 56-35 A
K7IND 4,552 56-32 A09
WA7JRY 3,400 50-34 A
WA7CSF 1,986 29-17 B07
K7INE 1,816 21-17 A07
WA7HFG 240 12-10 B
W7OS 234 13-9 B03
K7CZF 98 7-7 B02
WA7IBL 40 5-4 A02
WA7LLO 10 5-1 A01
W7AZI (+W7WLX) 3,860 55-26 A10
W7WLX (+W7AZI) 1,520 20-13 A04

PACIFIC DIVISION

East Bay
WA6CPY 41,790 300-70 B20
WB6YMB 38,272 300-67 A24
W6RQZ 6084 78-39 B
WA6HMT 4592 56-41 A06
WB6TOJ (WB6S BID HDJ QJD) 108,432 753-72 B24
W6DOD (+W6GK) 81,760 584-70 B24
WA6APW (+WA6LBT) 19,494 171-57 A21
Hawaii
KH6IJ 95,282 671-71 B20
Nevada
W7HWL 33,792 264-64 B17
K7TLB 19,360 245-40 B13
K9VER/7 12,624 133-48 B18
Scramento Valley
WB6UVH 87,746 601-73 B20
WB6MZX 48,990 346-71 B16
KISOP/6 45,962 343-67 B15

WB6AUH 10,492 122-43 A17
W6VUZ 9917 106-47 B
WB6VSC 4000 80-25 B06
W6KYA 2088 32-17 A03
W6NKR 987 24-21 B03
San Francisco
W6BIP 71,394 489-73 B19
K6TVL 22,410 208-54 B08
WB6YMW 17,324 142-61 B19
W6KWE 4521 29-33 B04
WA6QQZ 2641 70-19 A07
San Joaquin Valley
WA6IVN 128,025 864-75 B
WB6WQV 38,985 286-69 B18
WA6CPP 12,565 129-45 A16
Santa Clara Valley
K6VGV 65,412 482-69 B23
WB6ZHD 16,800 176-48 B11
W6JUV 9522 104-46 B13
W6IGU 6498 57-57 A10
WA6NHD 1080 30-18 A12
WA6CRI (4 oprs.) 60,225 403-75 B23
WB6JOD (5 oprs.) 33,660 298-60 AB
ROANOKE DIVISION
North Carolina
WA4FFW 108,332 743-73 B22
WA4TC (WB4TO, opr.) 41,907 345-61 B22
WB4ILO 9045 101-45 A07
South Carolina
WB4GGA 42,296 316-68 A17
K4CSZ 2350 48-25 A02
Virginia
W4KFC 111,250 738-75 B18
K4CG (K3WUW, opr.) 108,025 717-75 B24
W4DM 77,275 512-75 B20
K4PQL 76,650 529-75 B24
W4EZ 62,707 430-73 B19
K4PCL 52,080 373-70 B22
W4DUQ 45,041 309-73 B21
WB4JEZ 40,689 280-71 B21
W4ZCY 40,365 311-65 B08
WB4HOJ 38,280 339-58 B16
W4TKN 37,128 274-68 AB24
W4IK 35,028 278-63 B16
W4ZM 26,856 202-64 B09
W8QGP/4 22,491 179-63 B14
W4BVV 21,041 199-53 B05
WB4MZH 15,750 113-70 B11
W4ZSH 12,548 128-49 B06
K4ORQ 12,116 117-52 B06
WB4LPJ 10,868 143-38 A08
W4DSW 10,792 102-48 B13
W4GFJ 10,396 113-46 B06
K4BTQ 8788 118-33 B10
WB4DPD 8268 78-53 B15
W4FJ 3100 35-30 A05
W4YZC 2289 55-21 B02
W4IUI 1504 18-14 A02
WB4BLJ 1470 35-21 B05
W4HM 1002 1-1 A01
WB4GTS 1002 1-1 B01

WA9UHM a multioperator entry with **WA9AWO**, **Terry**, and **K9ZUI**, George, shown operating, managed 364 QSOs in 70 sections on cw. At right, their QTH, a converted chicken coop!



W4WBC 552 23-12 B01 K4ADU/4
 W4PHL2 1-1 B01 8673 90-49 A11
 WB4FDT (4 oprs.) WA4SSB 8652 103-42 A12
 21,717 191-57 B16 WA4ECY (6 oprs.)
 West Virginia 80,850 579-70 B24
 W4N (WA2ZKT, K8WAH)
 K8QYG 850 25-17 B02 37,824 297-64 B18

ROCKY MOUNTAIN DIVISION SOUTHWESTERN DIVISION

Colorado
 WAQCVS 74,480 535-70 B15
 WA8WED/q 62,208 517-64 B18
 WQLRN 53,728 514-52 A21
 WQLRW 46,322 366-62 A17
 W4UDS/q 44,184 397-56 B15
 WQBJW 29,672 230-64 B13
 WQGW 5977 70-43 B09
 KQEDG 2600 50-26 A05
 WQIZV 782 23-17 B03
 WAQKQO 18 3-3 A01
 KQMIC (4 oprs.) 20,094 197-51 A17
 WQYQ (multi-op.) 19,350 218-45 B17
New Mexico
 W5QNY 60,444 439-69 A23
 W5QLC 37,448 309-62 A17
 WA5TVO 28,673 274-53 B17
 WA5ROU 20,460 188-55 A24
 WA5VAL 17,700 150-60 A17
 WA5PBP 16,117 157-49 A
 W5QNG 4725 68-35 A04
 W5RSZ 4488 68-33 A02
 K5FHL (5 oprs.) 91,323 648-73 B24
Utah
 K9LBQ/7 156,252 1053-74 B24
 W7GXC 44,781 385-59 B21
 K7AOB 26,352 216-61 A21
 W7OHR (3 oprs.) 19,890 751-74 B23
 WA7HQU (+K7QEZ) 64,464 475-68 A24
Wyoming
 WA7EWC 69,862 501-69 B22
 WA7KQV 14,768 144-52 A20

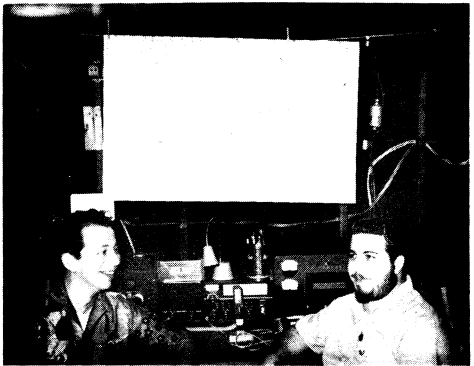
SOUTHEASTERN DIVISION

Alabama
 W4CBG 37,468 276-68 B16
 W4FKG 34,160 245-70
 AB17
 W4DS 24,570 189-65 B19
 K4MG 23,628 179-66 B09
 WB4NCT 8022 97-42 B1
 WB4HBJ/4 3664 57-24 B06
 WB4JMH 1680 40-21 A04
 WB4EOW 18 3-3 A04
 WB4KSL/4 (3 oprs.) 29,438 241-59 A21
Canal Zone
 KZ5AT 126,100 837-75 B24
 KZ5HJ 55,224 386-72 A15
 KZ5WJ 44,516 368-62 B09
 KZ5NG (3 oprs.) 14,994 148-51 B06
Eastern Florida
 WA4UFW 107,821 742-73 A24
 W4PZV (WA4SVO, opr.) 94,225 629-75 A24
 WB4IAE 84,490 596-71 A23
 WB4CAP/4 73,150 485-75 B24
 WBZYZ/4 44,702 364-62 B17
 WA4HIO 41,548 306-68 B14
 WB4JRV 25,422 223-57 B19
 W4KMG 17,766 141-63 B16
 W4WVB 4200 60-35 A05
 WA1GZV/4 (+WA4ABY) 36,432 280-66 B17
Georgia
 K4BAI 132,202 887-74 B24
 K4WAR (K8UQA, opr.) 119,550 797-75 A24
 K4VUD/4 59,429 451-67 A24
 K4HAV 44,421 332-67 B17
 K4EZ 1863 41-23 B02
West Indies
 KP4DCR 15,860 153-52
 AB17
Western Florida
 W4UHI 99,086 672-74 B24
 WA4VIY 93,586 642-73 B23
 W4FDJ 11,284 109-52 A12

Arizona
 W7CFJ 60,075 401-75 B13
 W7GKV 51,191 361-71 A20
 W7FCD 43,677 318-69 A12
 WA7IFD (+WA7E ISP MAW) 29,400 217-56 B19
 121,984 858-71 B23
 WA7IYG (4 oprs.) 60,645 471-65 A23
Los Angeles
 WB6FRD 103,320 732-72 B23
 WB6UHF 97,579 664-73 B24
 K6MP 89,424 623-72 B21
 K6BEP 64,614 495-66 B24
 WB6TAT 54,270 407-67 B22
 WA6CXA 52,360 374-70 A19
 WA6CFE 40,320 322-63 B13
 K6BWD 30,400 239-64 A21
 WA6DNF 29,400 217-56 B19
 WA6OSG 17,100 175-50 A15
 W6HOQ 17,064 158-54 B18
 W6IOS 16,740 155-54 B11
 WA6DPQ 14,784 154-48 A18
 W6JPH 7544 92-41 A03
 WB6EDM/6 3944 68-29 A08
 W6DQX 2268 43-27 B02
 K6FPZ 2232 36-31 B03
 WA6CSN 140 10-7 B
 W6NJU 72 6-6 B01
 WA6LXN/6 (WB6s KPN OLD) 29,013 257-57 A13
 W6VPZ (8 oprs.) 28,860 241-60 B20
 WB6SLU (2 oprs.) 15,024 157-48 A14
Orange
 K6UYC (K9ZMS, opr.) 142,266 962-74 B24
 K6YNB 74,970 540-70 B13
 W6GPR 59,764 447-67 B15
 WA6FIT 53,395 456-59 B18
 WB6ZYZ 49,344 388-64 B23
 WB6YBL 40,320 338-60 A18
 WA7FHD/6 37,440 288-65 A22
 WA6WFW (+WB6s AKR YXA) 38,740 298-65 B21
 K6SFD (+WA6ZSI) 25,134 213-59 B20
San Diego
 WB6LXS 77,552 524-74 B20
 W6JOT 74,184 572-66 B24
 WB6WHM 7920 99-40 B12
 WA6UIL (WA2BCI, WB6UHQ) 20,130 183-55 B08
Santa Barbara
 WA6ICZ 77,106 545-71 B24
 W6GEB 40,130 303-65 A15
 W6RFU (WB6DPV, opr.) 36,847 286-63 A09
 WA6HOM 13,850 139-50 B12
 W6JTA 10,600 106-50 B08
 WB6VKN 8652 103-42 A05
 W6KPJ 370 37-10 B01

WEST GULF DIVISION

Northern Texas
 K5RHZ 116,640 810-72 A
 WASLUM 116,180 789-74 B21
 K5ZJK 104,832 793-72 B23
 WASQXD 103,740 741-70 A23
 WASVSL 76,012 613-62 B19
 W5ONL 70,242 512-69 A24
 W5QQZ 69,138 501-69 A18
 WASVGT 62,377 467-67 B24
 WASYAS 41,272 308-67 B17
 WASVOT 39,934 310-63 A22
 K5YRK 26,838 215-63 A22
 WA5WQM 18,564 184-51 B19
 WQJYJ/5 11,466 137-42 A06
 K5YAA 6528 97-34 B04
 WA5ZUC 34 17-1 A15
Oklahoma
 WA5TSJ 72,940 521-70 B22
 WASTRM 33,441 236-71 A14
 K5JKG 6804 81-42 B11
Southern Texas
 W5JAW 137,048 928-74 B24
 WA5CBT 51,136 376-68 B19
 WA5WTW 30,500 253-61 A17
 WA5AUZ 15,840 132-60 A10
 WA5VUE 12,342 122-51 B13



Remember K5LZO and second op WA5LES? Well, they were back as promised in '69 with scores of over 183K/152K on phone/cw respectively. They comment that operators over the last 12 years have become much more efficient, making it a real pleasure to operate.

WA5VQK 7298 90-41 A03 VE3UQW (VE3s FJQ GMM) 26,842 222-59 A24
 WA5GLY 1276 30-22 A03
 K5LZO (4 oprs.) 183,076 1264-74 B23
 W5AC (4 oprs.) 112,554 768-74 B24 VE4ZP 28,674 252-59 A13
 VE4SD 5180 75-35 B03
Manitoba
 WA5UHR (+WA5WCT) 52,455 406-65 B24 Saskatchewan
 VE5US (VE5UF, opr.) 88,476 618-73 B21
 VE5TO 24,760 165-72 B22
 VE5AA (VE5s KR PC PK) 34,892 292-61 A22
CANADIAN DIVISION
Maritime
 VO1AW 7052 86-41 AB6
Quebec
 VE2DIN 918 27-18 A04
Ontario
 W8JKD/VE3 15,704 151-52 B17 VE7IQ 28,820 264-55 B18
 VE3AYR 3360 60-28 B06 VE7RN 13,275 149-45 B08
 VE3FHQ 2820 47-30 B10 VE7AZG 3024 54-28 A07
 VE3GCE 2464 44-28 A04
 VE3US 2152 32-18 B02
 VE3GHO 2020 30-17 A04 Yukon-N.W.T.
 VE3CSP 1776 37-24 A05 VE8YMT 33,664 265-64 B24
 VE8NWT (VE8BB, opr.) 21,546 190-57 B16

Check Logs

The call signs listed below are entered as check logs on a non-competitive basis for one or more of the following reasons: (1) Failure to submit a dupe sheet for logs with over 200 QSOs (the majority fall into this category), (2) Failure to submit Summary Sheet, (3) Request to be listed as a Check Log.

Phone
 K1KNQ, W1ILV, K2FO, WA2EBW, WB2TYR, W3DQG, K7UPJ/4, W4KP, W4UQ, WA4TWQ, WB4HYV, WA5VPL, K7YUJ, W7FO/7, W7HBM, WA7FID, WA7IIQ, K8GVK, K8MMH, WA8JUY, WB8BQG, WA9AQZ, WA9YLD, WA9YXG, WAQ-CJU, WAQJNF, WAQUME, W8ILH/VE6.

C.W.
 W1AX, W2HBO, W2VL, WA2EGT, WA2EXZ, W3DQG, W3GHM, W3YQ, WA3JQO, K4BN, W4GF, W4JUK, W5OE, WA5VDH, W7IV, W7QYA, KL7MF, W9PVI, WA8JUY, WB8BPD, WQMKH, WQYSE, WAQ-CJU, WAQPRS, WAQYGS, WNQYSU, VE2DIN, VE3AWE, VE3FHQ, VE3-RMC.

