



## Results, June V.H.F. QSO Party

REPORTED BY AL NOONE,\* WA1KQM/WB6SAZ

### *"Six meters surpassed our wildest expectations"—K3MTK/3*

FROM virtually every corner of the U.S.A. and Canada came reports such as the one above attesting to the exceptional conditions found on 50 MHz. over the June contest weekend. Lengthy sporadic-E openings, some multi-hop and reliable scatter communications were the rule, rather than the exception, throughout many sections of the country. Activity on 144 MHz. was fair, good band conditions were there in some instances, but signals weren't.

Some 410 logs were received here (112 multi-op entries) representing a slight drop over last year. However, activity was more widespread, as can be seen from a total of 69 sections submitting logs. September 15 will see the mailing of 68 single-op and 15 multi-op certificate awards.

In the single-op multiband category, our congrats to **K1AGB** in EMass, with a score of 20,022 (ABCD). Although Ed's score was by no means phenomenal (K3IPM holds the record with 37,989 in 1968), he does have a record high with 71 sections worked.

The rest of the top-10 lineup looks like this: **W2CLL** 18,693 (ABCD); **K9HMB** 16,472 (AB); **W4SRX** (K1WYS, opr.) 12,650 (AB); **W2GNS** 11,610 (ABCD); **WA4NJP** 11,328 (AB); **WA0-**

\* Communications Assistant, ARRL.

**AUB** 10,764 (AB); **W9YT** (K9OXY, opr.) 10,506 (AB); **K1ZGB/1** 10,471 (AB); and **W8VP** (WA8FHF, opr.) 9840 (AB).

Single band leaders were (50 MHz.) **K4AYO\*** 19,176; **K5AGI** 15,141; **W5RAG** 14,400; **W0PFP** 11,076; and **K1DKX** 9589. On (144 MHz.) **W2AQT** 2363; **WA2AGI** 1980; **W3BHG** 1207; **W1FJH** 1170; and **WB2YRM** 1143. In Canada, **VE6OH** with 2100 was high scorer on 50 MHz. while **VE2JB/2** with 116 takes honors for 144 MHz.

In the highly competitive multi-operator category, **W2JKI** emerges victorious with a whopping score of 63,609 (ABCD). Finishing a close second was **W1DC/1**, the 1200 Radio Club, with a total of 63,163 (ABCDE). It is interesting to note that while **W1DC/1** had 83 more QSOs, **W2JKI**'s 8 additional sections made the difference. Other excellent scores were contributed by **W3CCX/3** 50,049 (ABCDE); **K1PXE/1** 38,532 (ABCD); **W1MX/1** 36,576 (ABCD); **WB2GKE/2** 34,398 (ABCD); **K8MMM** 28,443 (ABD); **K1YLU/1** 24,120 (ABCD); and **WA2CJK/2** 21,868 (ABC). Pacing Canadian entries again this year is **VE3-FIB** with 17,248 (ABCD).

Acknowledgement is hereby given to the outstanding performance of **XE2XN**, whose 306

QSOs in 40 sections on 50 MHz. for a score of 12,240, has really added spice to an excellent contest weekend. This joint effort by K5HVC, W5ETG and XE2XN, operating from the home QTH of Don Roman Garcia Castro, was brought about solely with the intent of stimulating interest in 50 MHz. activity from Northern Mexico and to give W/VE stations a new XE2 confirmation. Congratulations to Bert, Terry and Don Roman for a fine effort. QRX for a most attractive QSL card.

B C N U in September, don't forget to attach some good action shots of your station activity along with the log entries!

### Soapbox

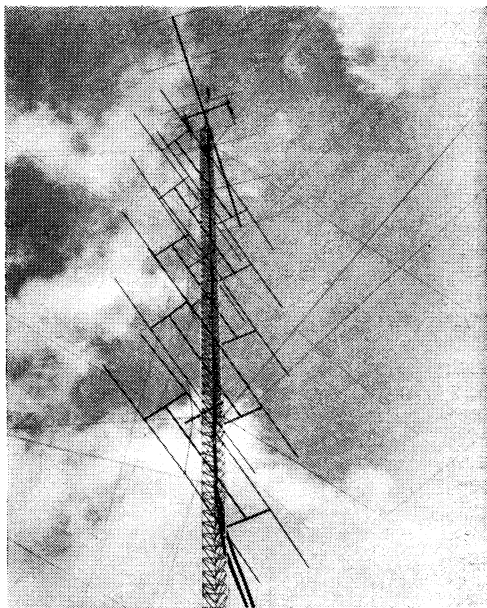
"Heard most of the Eastern half of the country on 6 but was only able to work 4 DX states. I always enjoy the V.H.F. parties, keep up the good work."—**WA1GDR**, EMass. "Truly a team effort, down east is not down out for v.h.f."—**W1DC/I**, Maine. "Six meters good to excellent with a short opening in late afternoon. Two meters poor to fair with QSB and large attenuation towards EMass area."—**W1CMV/I**, N.H. "Better than last year for me, still waiting for a chance at Vermont, Delaware and West Virginia after 17 years."—**W7JRG**, Mont. "Marginal sporadic —E conditions on 6, biggest thrill was hearing and working VE2 & VE3 coming through at 0800 GMT."—**W7FN**, Wash. "Besides being threatened by 50-m.p.h. winds, rattlesnakes and one of the operators eating all the soft drinks, we had a good time."—**W6PIY/6**, SCV. "I think there should be separate awards or scoring for s.s.b., and a.m. boys."—**WB4KIB**, N.C. "The east coast was in here on 2-meter sporadic—E about 0005 GMT June 15th. Activity lasted about 20 minutes with signals running about S7 but all you guys, including W1AW had your beams south working Fla. and other seaboard states."—**W7VDZ**, Wyo. "None of the openings from this section were strong and solid, typical of summer 50-MHz. Es, but the band kept shifting well throughout the country."—**K4AYO**, EFla. "Never saw so darn many v.h.f. logs."—**Donna**. "I have only one comment, and that is, this was my first contest and though I only came out with 164 points, a sprained tongue and a firm belief that the SNJ section moves into NNJ for a contest, I had a great time, and I would like to tell the guy who thought up this idea, Thanks and 73."—**WB2GYK**, NLI. "Band conditions great, not much 2-meter phone, probably because of 6-meter band openings."—**W1HJQ**, Conn.

"Where were the KH6s, heard ZK1AA from 1630-1850 GMT on Saturday. Happy to see XE2XN on six."—**W8LOW**, Ohio. "Without c.w. it would not have been a contest."—**W3BHG**, Del. "Was I the only Novice in the Central Division?"—**WN9AUJ**, Ind. "Weather conditions limited our operating to 10 hours and we were finally forced to retreat from the mountains."—**WA5TJB/5**, Ark. "Located in the Smokies, on the outskirts of the park, at an elevation of 2800 feet. Things were wild at times on 6, activity on 2 leaves a lot to be desired."—**W4SGI**, Tenn. "Enjoyed the contest very much, worked my first KP4."—**K8AJC**, Mich. "A good combination of groundwave and Es made it a fine contest."—**W3BWU**, WPa. "Fantastic conditions, 6 meters can be fun after all."—**WA9JYR** (G3PAC, opr.) Ill. "I haven't had this much fun on 6 since I got my license 7 years ago."—**WA0DWM**, Minn. "Worked 5 new states."—**WA5LTA**, La. "It is always enjoyable to work the v.h.f. contests, as usual the operating practices by all were commendable. Highlight was working XE2XN."—**W0EKB**, Nebr. "I wish the stations in the other parts of the country would point their beams my direction, heard over 60 sections in all call areas except KH6, most of those stations were rag chewing and wondering where the DX was."—**K7WXW/7**, Oreg. "After 13 years on 6 meters, finally heard and worked my 1st VE4."—**K6RNO**, EBay. "Very good contest and enjoyed myself very much, but no 2 meter activity in this area."—**WA5LXT**, Okla. "Conditions on 2 meters very bad at this location. Enjoyed the contest and looking forward to September."—**VE3SAU**. "All in all this was a great year at an excellent site with enough openings to make it interesting and challenging."—

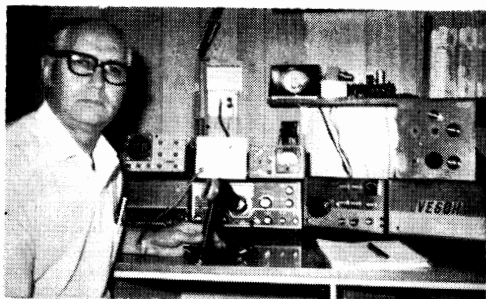
### DIVISION LEADERS

Single Operator		Multioperator
W2CNS	Atlantic	W3CCX/3
K9HMB	Central	WA9SDC
WA0DWM	Dakota	.....
K5AGI	Delta	WA5NOB/5
W8VP	Great Lakes	K8MMM
W2CLL	Hudson	W2JKI
W0FPF	Midwest	WA0NQA
K1AGB	New England	W1DC/1
K7WXW/7	Northwestern	K7BBO/7
K7ICW	Pacific	WB6NDJ/6
K4SUM	Roanoke	K2RTH/8
K5EFW	Rocky Mountain	WA0PHZ/0
K4AYO	Southeastern	WB4GZW
WA7BBM/7	Southwestern	K6BPC
W5RAG	West Gulf	.....
VE3CUA	Canadian	VE3FIB
.....	Foreign	XE2XN

**K6BPC**, Org. "Congratulations on a wonderful contest."—**WA7JTM**, Ariz. "Operated from the top of 4000 ft. Otay mountain."—**W6VON**, SDgo. "Very poor local response for this contest."—**VE2BMH**. "Two meter c.w. really came through with those extra sections for me, great contest, lots of activity."—**WA3MLK**, MDC. "I think that the 28 consecutive hour rule should be eliminated."—**W5RAG**, STex. "It was a lot of fun even though it was interrupted by a wedding, spotty band conditions and spasmodic power line hash of twenty over nine."—**VE4MA**. "Fortuitous conditions on 50 MHz. Once in a decade opening to VE2 and VE3 land was a unique experience. New England



**W2JKI** and friends far surpassed their June '68 score with a total of over 63K. This included 621 QSOs in 91 sections, quite sufficient to take the No. 1 spot in the the 170-foot tower can be found a 16-element 432 MHz' multi-op category. Pictured on the opposite page is W2JKI at the 220 MHz. position, while to the right we have a mighty impressive radiating system. From top to bottom on the 170-foot tower can be found a 16-element 432 MHz. collinear, two 4-over-4 J Slots side by side for 220 MHz., plus both a 6-element Telrex and a 20-element, non-rotating collinear for 50 MHz. The center of the array is 130 feet above ground.



**VE6OH**, our lone Alberta entry, gave some 84 W/K stations a new section and multiplier. He comments that most all call areas were heard but he worked only a few. Let's swing those beams north gang!

sections were easier to work than Calif."—**K7ICW**, Nev. "I understand 6 was wide open but I didn't have a receiver. Oh well, wait 'til September."—**WA9HHH/1**, Conn. "Great fun to be the "DX" on 50 MHz."—**WIHOY/KP4**. "We feel, in addition to the present scoring system, awards for high scorer on each band per section would encourage hams with gear for only one of the four bands to participate in the contest."—**WB2LZD/3**, EPA. "Glad to be back on 6, pleased to see a couple of good E2 openings during the

contest."—**VE5AAA**. "The only disappointments were the broken 432-MHz. beam and not being able to raise **K7ICW** on 6 meters. Apparently some double hop E skip, very erratic."—**W2UFT**, ENY. "May I suggest that the policy of not awarding a multi-op certificate unless there are 3 logs sent in seems rather arbitrary."—**W1MX/1**, Vt. "It was terrific to hear all the c.w., activity on 2, 220 and 432. I like the 28-hour rules, 1296 MHz. QSOs should be worth 5 points for more of an incentive, 220 and 432 should be 3 points."—**K1YLU/1**, WMass. "Conditions on 2 meters were excellent here but interest seems to be nil in this area."—**W7FQE**, Wash. "My 1st contest, worked 11 sections on 6 meters before contest started, band was in very good shape."—**K4SAO**, SC. "Good contest, band open somewhere most all of contest period."—**K7ZOK**, Nev. "The six meter band was really in fine form for contest operation with three major E's band openings and reliable scatter communications over paths up to 300-miles long. Two meters gave every indication of being in good shape, but there was a definite lack of signals in east central Illinois."—**K9GWT/9**, Ill. "Band conditions in this area great through out the contest, heard all call areas plus VE1 thru VE5, Mexico and Puerto Rico."—**WB8BGY**, Mich. "Six meters was open to really hike the section total and 432 MHz. showed increasing activity."—**W1EUI**, EMass. "Shocked by the lack of activity on 2 meters anymore. More stations were on during Field Day last week than there was during the QSO Party."—**W6QED**, SDgo. "Thanks for arranging the contest so we could have the best band opening I have ever seen on 6 meters."—**WB4LDO/4**, NC. "First v.h.f. contest, doesn't anyone like c.w."—**W6KQG**, SCV. "Six meters had three short band openings

Minimum Number of Sections						Minimum Number of Sections						Minimum Number of Sections						Minimum Number of Sections					
30 15 4 3 2						30 15 4 3 2						30 15 4 3 2						30 15 4 3 2					
Band (MHz.)	50	144	220	432	1215	Band (MHz.)	50	144	220	432	1215	Band (MHz.)	50	144	220	432	1215	Band (MHz.)	50	144	220	432	1215
K1AGB	38	14	9	10		WA2CJK/2*	46	22	3			K4GL	32	7		1		W8VP*	32	8			
K1DKX	43					WA2DIR	19					K4IUV	32					W8WEN		16			
K1HTV		20		8		WA2BLM	39	10				K4PKV/4*	33	5				WA8LOW	34	4			
K1ORF/1*		15				WA2EUS	9	3	3	4		K4SAO	31			7	2	WA8PLZ*	36	10		6	
K1PXE/1*	37	19	13	7		WA2FGK/2	39	14		12		K4SUM	24	11		7		K2RTH/8*	33	16		4	
K1SFF*	30	7				WA2VTR				2	2	W4FJ	15	3				K9GWT/9*	38	4			
K1YLU/1*	34	14	9	10		WA2WZP	37	11				W4PAR/4*	35	1				K9HMB	53	5			
K1YON	22	6	7		1	WB2FKJ/2*	40	18	12	6	2	W4SGI*	35	6				K9KFR	38				
W1DC/1*	44	17	10	10	2	WB2GKE/2*	35	20	1	7		W4SRX*	49	1				K9QCB	31	5	1	1	
W1EUI	30	14		9		WB2MZE	31	13				WA4AXM	34					W9YT	45	6			
W1FJH		18				WB2QLP	36					WA4CGA	33	5		2		WA9JYR	35	6			
W1MX/1*	37	18	7	10		WB2RBG	32	6				WA4CQG/4*	38	7		1		WA9SDC*	36	3			
W1YK	36					WB2YZV*	35	10	2			WA4GLO	32	1		3		K9MBC	43				
WA1FSZ/1*	30	10				K3MBQ/2	42					WA4MDW*	32	4				K9TLM	47	2			
WA1HHN	37	11				K3HKK/3*	37	19	5	7		WA4NJP	43	5				W9EKB	50				
WA1IED*	38	18	6	6		K3JRO/3*	31	10				WB4BND	38					W9IPB	47	2			
WA1IOX*	39	16	8	5	5	K3LNZ/3	32					WB4CXC*	32	1				W9JCO	40				
WB2HPW/1*	30	8				K3MTK/3*	41					WB4ENN/4*	34	3				W9PFP	52				
K2BGU*	33	14	2	3		K3TUN/3*	33					K5AGI	49					W9TVK/8*	34	1		1	
K2CQG				15		K3ZTJ	36	4				K5EFW	34					WA9AUB	50	2			
K2OJD*	41	17	5	5		W3ARW*		16	5	6		W5OQN	34					WA9DWM	30				
K2UYH*				15	2	W3BHG		17				W5RAG	48					WA9MRH	41				
K2VBB/2*	40	14		3		W3CCX/3*	40	20	11	9	3	WA5IYX/5	37					WA9NQA*	36				
W2AQT		17				W3CGV		4	5	5	5	WA5LTA	40	1				WA9PBO*	33	3			
W2CLL	35	18	4	10		W3KMY	33					WA5NOB/5*	52	1				WA9PHZ/8*	34	1			
W2CNS	34	13	4	3		W3LUL		15				WA5OUU	40	1				WA9SKH/8*	34	2		1	
W2DZA	3	4	4	3		W3PGA/3*	31	13				WA5PDD	36					WA9SYS/8	32				
W2GTF/2	18	18				WA3ADN	36	9				K6BPC*	14	5	3		2	VE2DFO/2*	45	11	1	1	
W2JKI*	45	19	13	14		WA3JMR/3*	34	5				WB6NDJ/6*	17	8	4	4	1	VE2HW*	7	11	3	4	
W2OJ/2*	24	18	9	4	3	WA3JXU	33					K7ICW	39	5				VE2RM	35	14		1	
W2SEU	22	10	3	4		W2AD/3	31					W7VDZ	30					VE3CUA	34	2			
W2SZ/2*	30	13	5	6		WB2LZD/3*	42					WA7BBM/7	32	1				VE3FIB*	36	15	2	3	
W2UFT*	42	21	9	4	1	K4AYO	51					K8MMM*	46	7		4		VE3SUA*	34	5			
WA2BBS	37					K4FKO	39	3				W8CCI*	49	8	1	1		XE2XN*	40				

\*Multioperator Station.

in northern California, 220 MHz. at an all time low in this area. Suggestion for the contest committee, give awards for the top single and multi-op stations in each division besides the section awards you give now."—**WB6NDJ/6**, EBay. "Highlight was a last minute 432 MHz. QSO with VE7BBG in Vancouver, who was using his 192-element moonbounce antenna. We couldn't count it though—it was outside the 28-hour window."—**K7AUO/7**, Oreg. "Conditions here in New England on 6 were phenomenal. Two lengthy sporadic-E sessions, some multi-hop, should substantially increase the scores of all participants who made effective use of the band. Conditions on 2 were par for the June contest period."—**K1AGB**, EMass. "Worked all call areas of the US including such rare ones as Arizona and Washington. Saturday afternoon tropo conditions were average. Sporadic E was very good, but the QRM was fierce. One interesting note is that very few a.m. stations were heard here even at the peak period."—**VE2DFO/2**. "Have yet to work a W1 from here in three years."—**WA5LYX/5**, STex. "I enjoyed the ARRL VHF QSO Party very much."—**WB2TJE**, NLI. We were not prepared for the amount of c.w. operation on two that occurred. All included, it was an excellent contest with very good ground wave conditions and enough skip to keep us busy.—**K4PKV/4**, Tenn. "Six meters was fairly good with consistent sporadic E and fair scatter. Two meter tropo conditions were below average with brute force bringing home the sections. Will be back in Sept, hope more activity will be the rule."—**W6NGN/6**, Org. "Double skip on 6 meters Sunday made the contest very interesting and enjoyable, however . . . I would like to see the contest operation restricted to the first two megacycles of 6 and 2 meters. This would hopefully restrict the use of repeater frequencies for obtaining contest points."—**VE3CUA**. "What happened to all the locals. Still my best VHF QSO Party yet."—**WB2ZDP**, WNY. "I am a 12-year-old general and this was the first contest I ever worked. Got 3 new states for my WAS."—**WB8AYC**, Ohio. "Where was SNJ."—**WB2YRM**, ENY. "We climbed 3 miles uphill to our Qth, only to be greeted by another club. What QRM! The high point of the contest was when WB2JXE was 20 feet up in a tree adjusting the 6-meter Yagi and WB2LOO chopped 3 inches into the tree with his axe. Pouring rain all weekend took much of the fun out of it, but we'll be back."—**W2GTF/2**, ENY. "Very fine contest this time, best band opening we have had at this Qth for a QSO Party."—**WA4MDW**, NC. "If you can arrange for a band opening like this one next time, I guarantee to do better."—**WB4-BND**, EFla. "I was one of the few stations who worked CO2DC."—**WA9ZCE**, Ind. "A very strong inversion layer prevented the 10 GHz Qso until late Sunday afternoon. This layer was visually observed by K7AUO/7 to lift above their elevation."—**W7UDM**, Oreg.

## SCORES

In the following tabulation, scores are listed by ARRL divisions and sections. The top single-operator scorer in each section receives a certificate award. Multiple-operator scores are shown at the end of each section tabulation; in sections where at least three such entries were received, the top multioperator scorer receives a certificate award. Asterisk following call indicates Headquarters staff member, ineligible for award.

Columns show final score, total number of contacts, section multiplier, and bands used. A represents 50 MHz.; B, 144 MHz.; C, 220 MHz.; D, 432 MHz.; E, 1215 MHz. and above.

### ATLANTIC DIVISION

#### Delaware

WA3JXU 5247-159-33-A  
W3BHG 1207- 74-17-B  
W3CGV 608- 21-19-ABCD  
W3KOI (K3RBU, opr.)  
600- 60-10-AB  
WA3HWC 240- 30- 8-B  
W3ZNF 60- 10- 6-B  
WA3IID 15- 5- 3-B

#### Eastern Pennsylvania

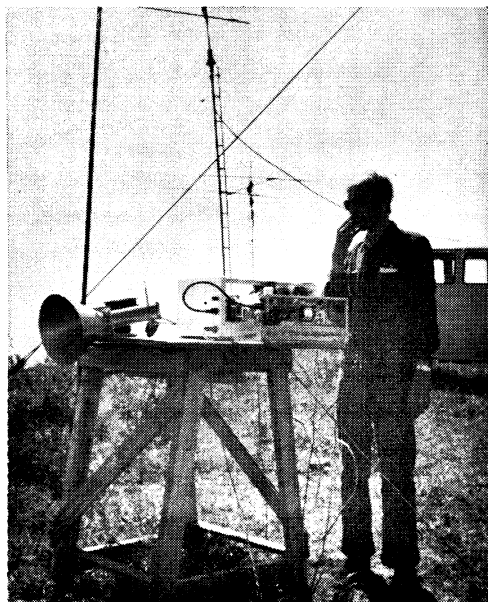
WA3ADN 9180-204-45-AB  
K3IPM 8474-212-38-ABCD  
K3ZTJ 7120-178-40-AB  
K3PGB 3013-131-23-A  
W3ETB 271-154-18-AB  
K3TMV 1660- 83-20-A  
WA3BHE 1404- 52-27-A  
K3OJH 1071- 51-21-A  
WA3HIT 1035-115- 9-AB  
WA3LTM 765- 51-15-A

WA3BGN/3 726- 66-11-AB  
W3DYL 592- 37-16-AB  
WA3HET 370- 37-10-A  
K3BKG/3 (WA3ATX, opr.)  
192- 32- 6-A  
WA3HEB 160- 32- 5-A  
WA3AFI 34- 17- 2-A  
WA3ATX 1- 1- 1-A  
W3CCX/3 (26 oprs.)  
50,049-515-83-ABCD  
K3HKK/3 (8 oprs.)  
24,140-319-68-ABCD  
K3MTK/3 (5 oprs.)  
16,638-354-47-AB  
WB2LZD/3 (4 oprs.)  
11,224-244-46-AB  
W3AWA/3 (12 oprs.)  
9916-268-37-AB  
W3ARW (K3SQO, W3ARW  
GF) 9457-161-53-ABCD  
K3TUN/3 (5 oprs.)  
8464-180-46-ABCD  
W3AD/3 (5 oprs.)  
8066-218-37-AB



No, your ears weren't deceiving you! The Communications Club of New Rochelle managed to stir up 2 meters a bit here in the East with the exotic call **VK1ZAR/W2** (shown operating). That's K2SJN, Eastern New York SCM assisting.

WA3IUD (8 oprs.) 4760-170-28-AB  
W3BBS/3 (4 oprs.) 3360-112-30-AB  
WA3HDI/3 (4 oprs.) 2603-137-19-AB  
WA3HEU/3 (WA3s FCZ  
HEU) 1995-133-15-AB  
W3LPL (K3IWZ, W3s GFN  
JUZ) 605- 55-11-AB  
Maryland-D.C.  
WA3APQ 5809-157-37-AB  
K3LNZ/3 5698-154-37-AB  
W3KMY 4719-143-33-A  
W2AD/3 (WA3LFL, opr.)  
3348-104-31-AD  
WA3MLK 2200-100-22-AB  
WA3CBC 1764- 84-21-AB  
WA3DMD 799- 47-17-A  
WA3HEN 790- 79-10-B  
W3HB 684- 57-12-B  
W3MSN 640- 40-16-A  
W3LQY 540- 54-10-B  
W3LUL 525- 35-15-B  
WA3GBK 506- 46-11-B  
W3GN 324- 27-12-B  
W3QU 315- 35- 9-AB  
WA3LIU 50- 25- 2-B  
WA3JMR/3 (4 oprs.)  
11,310-290-39-AB  
W3PGA/3 (7 oprs.) 9416-214-44-AB  
K3NDM (4 oprs.) 627- 57-11-AB  
W3PZK (W3PZK, WN3s  
LPG LTJ) 520- 39-13-ABC  
Southern New Jersey  
K3MBQ/2 6078-159-42-A  
WB2YHF 1239- 59-21-AB  
WB2PLQ 660- 44-15-AB  
K2VNS 120- 24- 5-B  
K2BWR (K2s BWR ZRJ)  
12,060-201-60-AB  
W2ZQ (5 oprs.) 6970-205-34-AB  
WA2DRI (6 oprs.) 6075-225-27-AB  
WA2ETG (WA2s AXF ETG  
FVU) 3427-149-23-AB  
Western New York  
W2CNS 11,610-201-54-ABCD  
WA2TEY 2610- 90-29-AB  
WA2KND 1254- 64-19-ABD  
K2RFO 969- 51-19-AB  
WB2ZDP 240- 24-10-AB  
WA2HYK 216- 24- 9-B



Perched high atop a 3000-ft. mountain, we find the **K7AUO/7** gang with W7ADY operating the 3.3 GHz. Polaplexer. The Tektronix Club effort netted 117 QSOs in 26 sections, a fine showing from the Pacific Northwest.

WA2CJ/K/2 (WA2s CJK  
UJM, YE2MW)  
21,868-301-71-ABC  
WA2JOQ (4 oprs.)  
1817-79-23-A  
K2LFB/2 (K2LFB,  
WA2GJA)  
1050-68-15-ABD  
WB2MXS/2 (WA2s IKO  
YHY, WB2MXS)  
910-65-14-A  
(6 oprs.)  
270-30-9-A  
W2TRS/2 (W2TRS  
WA2YGG)  
138-46-3-AB

*Western Pennsylvania*  
W3BWU 3904-121-32-ABC  
W3DJM 572-44-13-A  
WA3KYC 130-26-5-B  
WA3BGE 45-15-3-A  
WA3JDT 6-3-2-A  
K3JRO/3 (6 oprs.)  
9676-236-41-AB  
WA3AWO (5 oprs.)  
390-26-15-AB

## CENTRAL DIVISION

### Illinois

K9HMB 16,472-284-58-AB  
WA9JYR (G3PAC opr.)  
9307-227-41-AB  
WA9SDT 1040-52-20-AB  
W9DJZ 638-58-11-AB  
WA9HEU 518-74-7-B  
WA9QPM 392-98-4-B  
W9IVI 152-38-4-B  
WA9ZGF 138-46-3-B  
WA9NRI 96-22-3-B  
W9GYN 64-32-2-B  
K9YHB (4 oprs.)  
6060-202-30-AB  
K9GWT/9 (4 oprs.)  
5628-134-42-AB  
W9DY (W9DY, WA9YUH)  
420-105-4-B  
WA9QAD (WA9s QAD VJQ)  
330-66-5-B

### Indiana

K9QCB 8664-226-38-ABCD  
K9KFR 7182-189-38-A  
WB9ALZ 2233-77-29-A  
WA9ZCE 279-31-9-A  
WN9AUJ 72-18-4-B  
WA9SMO/9 (4 oprs.)  
940-47-20-A

### Wisconsin

W9YT (K9OXY, opr.)  
10,506-206-51-AB  
W9CGU 2880-96-30-AB  
WA9ZLM 616-40-14-AE  
WA9EZU 50-10-5-A  
W9NUW/9 (WA9UNB,  
opr.) 7-7-1-B  
WA9SDC (WA9s SDC TID)  
6474-166-39-AB  
WB9GH/9 (K9REE,  
WB9GH, WA9LWJ)  
816-48-17-A

## DAKOTA DIVISION

### Minnesota

WA0DWM 2910-97-30-A  
WA0SIE 1044-58-18-A  
K0GYO 882-49-18-A

### North Dakota

K8CLA/0 1274-49-26-AB

### South Dakota

WA0PBJ/0 1800-75-24-A

## DELTA DIVISION

### Arkansas

WA5NOB/5 (6 oprs.)  
12,614-238-53-AB  
WA5TJB/5 (WA5s TJB  
UMF, WN5JHN)  
1394-82-17-AB

### Louisiana

K5AGI 15,141-309-49-A  
WA5LTA 5576-136-41-AB  
WA5QBX 2728-88-31-AB

WA5GQT/5 2117-73-29-A

WA5VCF 1728-72-24-A

### Mississippi

WA5RMS 714-42-17-A



In the words of WA0AUB, "This will have to go down as one of the greatest VHF contests I have ever seen." Craig made an impressive showing from Missouri with 207 QSOs in 52 sections, 50 of them on 6 meters. He notes that on Sunday the band was open to most every part of the country except the Northwest.

### Tennessee

K4FKO 7518-179-42-AB  
WA4CGA 5680-140-40-ABD  
K4IUV 4064-127-32-A  
WB4HIL 2415-105-23-AB  
WA4BXZ 2349-87-27-AB  
K4UWH 432-36-12-AB  
W4SGI (4 oprs.)  
8528-208-41-AB  
WB4ENN/4 (W4s TJG  
TZG) 7585-205-37-AB  
K4PKV/4 (K4PKV, WA4s  
UMU YWM)  
5700-150-38-AB  
WB4CXC (4 oprs.)  
4488-136-33-AB  
WA4ZTH/4 (WA4s ZTH  
ZZM, WB4JIX)  
2184-84-26-A

## GREAT LAKES DIVISION

### Kentucky

WA4AXM 3740-110-34-A  
WA4CQG/4 (WA4CQG,  
WA8TYF)  
11,592-251-46-ABD

### Michigan

WB8BGY 4020-134-30-AB  
W8SH (WA3GBU, opr.)  
3584-112-32-AB

WA8VJE 2632-94-28-A  
W8NOH 2160-90-24-AB  
WA8VHG 1407-65-21-ABD  
K8EFS 1281-61-21-A  
K8AEM 931-49-19-AB  
W8CNL 825-55-15-AB  
WA8PIE 824-103-8-B  
WA8ZUI 689-53-13-A  
WA8PST 572-52-11-AB  
WA8YYW 535-107-5-B  
WA8MJY 168-42-4-B  
K8AJC 130-26-5-A  
WA8RQJ 66-11-6-B  
WA8WXZ 63-21-3-B  
WA9ULU/8 40-10-4-B  
WA8ZPF (WA8ZPF,  
WB8BGQ) 300-25-12-AB

K2CQG 1140-38-15-D  
WA2VTR 124-12-4-DE  
W2IP 102-17-6-B  
W2JIK (6 oprs.)  
63,609-621-91-ABCD  
WB2FKJ/2 (16 oprs.)  
57,954-060-78-ABCD  
W2UFT (7 oprs.)  
50,204-612-77-ABCD  
W2SZ/2 (6 oprs.)  
16,524-272-54-ABCD  
K2BGU (7 oprs.)  
14,976-275-52-ABCD  
W2GTF/2 (5 oprs.)  
9540-265-36-AB  
WA2FUZ/2 (WA2s FUZ  
YJF) 2059-71-29-AB  
WA2TEQ (6 oprs.)  
164-82-20-A  
VK1ZAR/W2 (4 oprs.)  
568-71-8-B  
W2KZN (W2KZN, WA2s  
GSB HVH)  
108-18-6-AB

## New York City — Long Island

WB2MZE 8536-194-44-AB  
WA2BBS 8362-226-37-A  
WB2QLP 5652-157-36-A  
W2SEU 534-124-39-ABCD  
WA2ZPX 2068-94-22-AB  
WA2AGI 1980-132-15-B  
WB2WSS 1102-58-19-AB  
WA2DPF 1010-101-10-B  
WA2EUS 969-42-19-ABCD  
WA2DIR 836-44-19-B  
K2LCK 336-48-7-B  
WB2TJE 288-72-4-B  
W2KXG 276-46-6-B  
WB2TUT 200-50-4-B  
WB2GYK 164-41-4-B  
WB2YIG 81-27-3-B  
W2ZPC 52-13-4-B  
K2RLW/2 24-8-3-B  
WB2GWU 22-11-2-B  
WB2YZV (WB2s DIN YZV)  
14,758-309-47-ABC

## Northern New Jersey

W2CLL 18,693-241-67-ABCD  
WA2WZP 14,640-305-48-AB  
WA2FGK/2 14,625-200-65-ABD  
WA2VAZ 4454-131-34-AB  
W2AQZ 2363-139-17-B  
W2CVW 804-61-12-ABD  
W2DZA 742-37-14-ABCD  
WB2HYF 282-47-6-B  
WB2MXZ 135-27-5-B  
WB2GKE/2 (8 oprs.)  
34,398-502-53-ABCD  
W2OJ/2 (7 oprs.)  
30,334-451-58-ABCD  
K2OJD (K2OJD, WA2s KIK  
JNF) 29,580-411-68-ABCD  
K2VBB/2 (7 oprs.)  
28,158-479-57-ABD  
K2GXX (K2GXX, WA2s  
ANI BCN)  
6148-212-29-AB  
WA2WIL/2 (7 oprs.)  
3160-150-20-ABD  
K2UYH (K2s IBF UYH,  
WB2SZW)  
1989-56-17-DE

## MIDWEST DIVISION

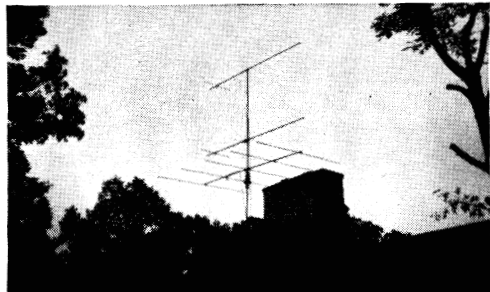
### Iowa

W0PFP 11,076-213-52-A  
W0JTG 2072-74-28-A  
K0GEY 232-29-8-B

### Kansas

W0IPB 7301-149-49-AB  
WA0PBO (WA0s PBO PKG)  
4392-122-36-AB

The multi-op effort of WA1JDR (WA1s DPP JDR) netted 71 QSOs in 23 sessions from East Mass. Dave, WA1JDR is shown operating the 6-meter position and comments on how much c.w. helped him on that band. Antennas include a 5-element Cush Craft beam on 6, and two stacked 11-element beams on 2 meters.





Looking to the South, we have **W4SRX**, the Eglin Amateur Radio Society with **K1WYS** at the mike. Harry pulled through some 253 stations in 50 sections for a fine showing from Florida.

#### Missouri

**WA0AUB** 10,764-207-52-AB  
**K0TLM** 8967-133-49-AB  
**W0UCK** 133-19-7-A  
**WA9NQA** (6 oprs.)  
 6156-171-36-A

#### Nebraska

**W0EKB** 8850-177-50-A  
**WA9MRH** 5781-141-41-A  
**K0MBC** 5676-132-43-A  
**W0JCO** 3640-91-40-A

#### NEW ENGLAND

##### Connecticut

**W1AW** (K6OSO, opr.)<sup>\*</sup>  
 3952-104-38-AB  
**W1AIQJ** 3625-125-29-AB  
**K1YON** 3528-85-36-ABCE  
**K1HTV** 3360-110-28-BD  
**W1ISD** 1106-79-14-AB  
**W1GTP** 540-24-18-ABC  
**W1GOI** 513-57-9-B  
**K1QXX/1** 160-20-8-A

**W1CRS/1** 126-14-9-A  
**WA9HHH/1**<sup>\*</sup>  
 102-17-6-B  
**W1JPP** 39-13-3-AB  
**W1ISE** 36-12-3-A  
**W1NBP** 35-7-5-B  
**K1PXE/1** (6 oprs.)  
 38,532-470-76-ABCD  
**W1IOX** (8 oprs.)  
 31,390-390-73-ABCDE  
**W1IED** (8 oprs.)  
 21,488-290-68-ABCD  
**K1ORF/1** (K1s ORF SVN)  
 2220-148-15-B

##### Eastern Massachusetts

**K1AGB** 20,022-248-71-ABCD  
**W1EUJ** 13,409-237-53-ABD  
**W1FCD**  
 1332-74-18-AB  
**W1GDR** 602-43-14-AB  
**W1LMZ** 364-28-13-B  
**K1HBY** 80-20-4-B  
**W1CEO/1** 70-14-5-B  
**K1SFF** (K1s LOG SFF)  
 4958-123-37-AD  
**W1JDR** (W1s DPP JDR)  
 1633-71-23-AB

##### Maine

**W1YTW** 935-50-17-BC  
**W1DC/1** (18 oprs.)  
 63,163-704-83-ABCDE

##### New Hampshire

**K1ZGB/1**  
 10,471-283-37-AB  
**K1PMM** 4134-159-26-AB  
**W1JM** 798-57-14-B  
**W1QHS** 312-26-12-AB  
**W1FSZ/1** (W1SHJ, W1-FSZ, W1N1DL)  
 7920-198-40-AB  
**W1CMV/1** (K1HDO, W1-CMV, K2QVV)  
 5428-236-23-AB

##### Rhode Island

**K1TPK** 7245-207-35-AB  
**W1POP** 1577-83-19-AB  
**WB2HPW/1** (5 oprs.)  
 6194-163-38-AB  
**W1CPX/1** (5 oprs.)  
 2412-134-18-A

#### Vermont

**K1GYT** 6392-188-34-AB  
**W1MX/1** (7 oprs.)  
 36,576-477-72-ABCD  
**W1LCH** (W1s KJI LCI, W1N1LCO)  
 464-29-16-A

#### Western Massachusetts

**W1HHN** 9792-214-18-AB  
**K1DKX** 9589-223-43-A  
**W1YK** (W1EJQ, opr.)  
 6516-181-36-A  
**K1PYX** 1200-50-24-A  
**W1FJH** 1170-65-18-B  
**W1UCB** 48-8-6-AB  
**W1LKF** 48-8-6-A  
**W2NG/1** 32-8-4-A  
**K1YLU/1** (10 oprs.)  
 24,120-326-67-ABCD

#### NORTHWESTERN DIVISION

##### Idaho

**WA7BTG/7**  
 1026-57-18-A

#### Montana

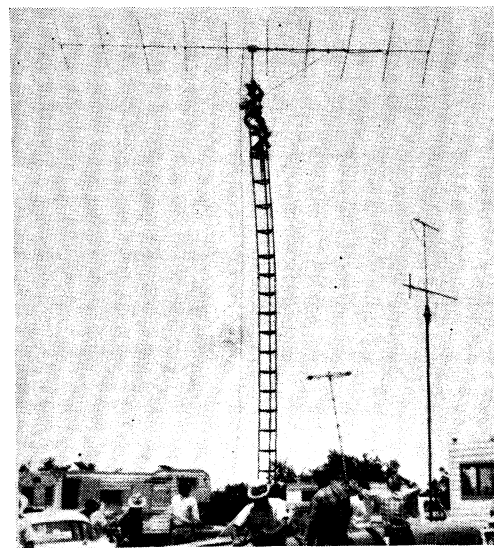
**W7JRG** 2697-93-29-A  
**W7EGN** 364-26-14-AB

#### Oregon

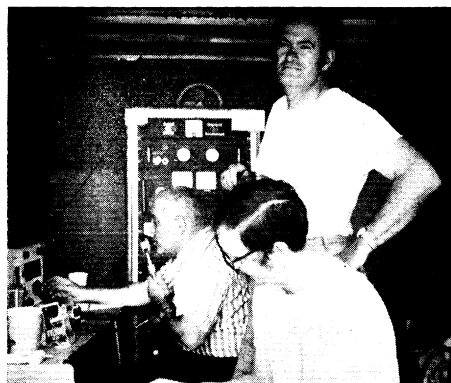
**K7WXW/7**  
 4340-140-31-AB  
**W7UDM** 1500-68-20-ABCDE  
**W7TYR** 228-36-6-ABC  
**K7WWR** 42-21-2-B  
**W7NMD** 5-5-1-B  
**K7AUO/7** (10 oprs.)  
 3432-117-26-ABCDE  
**WA7GCS/7** (WA7s GCS, GFP)  
 3003-143-21-AB  
**K7JZP/7** (K7JZP, W7GUH, WA7LDZ)  
 2783-121-23-AB  
**W7ZLR** (K7HSW, W7ZLR)  
 175-24-7-ABC

#### Washington

**W7FN** 3920-140-28-A  
**K7VNU/7**  
 3108-148-21-AB  
**K7GWE** 2992-136-22-AB



Here's part of the reason that **K6BPC** has been consistently leading the Southwestern Division multi-op entries. Above, we see Jim, **WA6KVS**, balancing a 10-element 6-meter Yagi prior to placing it on the rotator with the rest of the gang looking on somewhat anxiously. 440 QSOs in 24 sections plus the fact that W1s were heard in the L.A. area for the first time this year adds further proof to the fact that this was indeed a good contest weekend.



**W3CCX/3**, the Mt. Airy Radio Club, with an all-band multi-op effort of 515 QSOs in 83 sections, led the Atlantic Div. Shown is their 2-meter position with **K3DLS** operating, **WA4PNH** logging and **K3IGX** looking on.

**K7DBR** 1692-34-18-AB  
**W7FQE** 24-12-2-B  
**K7BBO/7** (5 oprs.)  
 11,205-379-27-ABCDE  
**K7LEY/7** (4 oprs.)  
 1680-112-15-AB  
**W7DZO/7** (K7IDX, W7s DZO TSS)  
 679-97-7-AB  
**W7PRW/7** (6 oprs.)  
 350-70-5-AB  
**W7HFH/7** (5 oprs.)  
 136-34-4-AB

#### PACIFIC DIVISION

##### East Bay

**K6RNQ** 1872-72-26-AB  
**WB6NDJ/6** (9 oprs.)  
 10,506-289-34-ABCDE

##### Nevada

**K7ICW** 7920-180-44-AB  
**K7ZOK** 1534-59-26-AB

##### Sacramento Valley

**WA6GER** 1160-51-20-ABDE

##### San Francisco

**WB6TJO** 884-68-13-AB

##### San Joaquin Valley

**WB6UYG**  
 2910-97-33-AE

##### Santa Clara Valley

**WA6FAC** 2715-181-15-AB  
**WB6CKT**  
 1950-133-15-AB  
**K6DTR** 1964-72-14-ABCD  
**K6KQG** 324-36-9-A  
**WB6YUK** 102-34-3-B  
**W6CHA** 10-5-2-B  
**K6GSS/6** (K6GSS, WB6KBZ)  
 4048-176-23-AB  
**W6PIY/6** (6 oprs.)  
 504-84-6-AB

#### ROANOKE DIVISION

##### North Carolina

**WB4INE** 2262-87-26-A  
**K4GMP** 1846-71-26-A  
**WB4KIB** 915-61-15-AB  
**WA4BVW**  
 810-54-15-AB  
**WB4DBB** 420-35-12-AB  
**W4EPV** 377-29-13-A  
**W4DGF** 333-37-9-AB  
**K4DFI**  
 14-14-1-B  
**W4PAR/4** (K4HGK, WA4s HAZ JVD)  
 5616-156-36-AB  
**WA4MDW** (WA4s MDW, W2P)  
 5436-151-39-AB  
**WB4LDO** (WA4YKI, WB4-LDP)  
 3240-108-30-AB  
**WB4CES** (WB4s CES IBW)  
 976-61-16-AB

##### South Carolina

**K4GL** 4560-113-49-ABD  
**K4SAO** 3038-98-31-A

##### Virginia

**K4SUM** 8712-178-44-ABDE  
**WA4GLO** 7848-212-36-ABD  
**W4FJ** 1500-45-25-ABD  
**W4KMS** 144-16-9-A

(Continued on page 75)

**Rhode Island**—The National Amateur Historical Radio Conference, sponsored by the Antique Wireless Assn., will be held on October 3 and 4 at the New England Wireless Museum, East Greenwich, R. I. OOTC meeting Friday P.M., continuous program Saturday with well known pioneers plus demonstrations of early equipment ending with a banquet and old time entertainment in the evening. Antique gear contests and auction Sunday morning. Send for program. Registration \$3.00. Registration, lunch, and banquet only \$11.00. Deadline September 20. Mail checks to Robert Merriam, Tillinghast Rd., East Greenwich, R. I. 02818.

**Texas**—The Texas Instruments Radio Club is planning a Hamboree and Swapfest for September 13 and 14 and it will be held at the Texas Instruments Activity Center located on North Central Expressway in Dallas. Activities will start at 9:00 A.M. and continue until 5:00 P.M. Registration is \$2.00 per person. Contact John Zagrodnick, W5LWH, 3823 Antiqua Drive, Dallas, Texas 75234.

**Virginia**—See Maryland.

**Washington**—The Walla Walla Valley ARC will hold its 23rd Annual All-Family Picnic and Hamfest September 21, at Jefferson Park in Walla Walla. Swap and shop, games and awards and dealer's displays and the annual meeting of MINOW. Lunch will be served at 12:30 and will be pot-luck, coffee and punch furnished. Free registration all day. Talk-in frequencies are 3.960, 29.6, and 146.60 MHz. For more information write W8DP, P.O. Box 321, Walla Walla, Wash. 99362. **QST**

## An Inexpensive Ten-Minute Timer

(Continued from page 41)

source. However, considering the timer's simplicity, cost and ease of operation, the unit is still completely adequate for its intended purpose.

### Some Possible Variations

For a more commanding visual signal, the relay points can be wired to connect a large lamp across the 115-volt ac line. Alternatively, a buzzer or bell can be actuated for an audible warning.

For the economy-minded, the price of a relay (about three dollars) can be saved by connecting a 2-volt, 60-mA pilot lamp (No. 49) and an appropriate series dropping resistor in place of the relay coil.

The SET-RESET/OFF function could be provided by relay contacts actuated by the send/receive circuits controlling a transmitter.

Relay points could be wired to control an automatic identifying device which, without operator intervention, would reset the timer to start a new interval at the end of a cycle.

The shortest obtainable time period using the voltage at the junction of  $R_3$  and  $R_4$  as the firing voltage is somewhat less than three minutes. A second potentiometer could be substituted for  $R_4$ , and a single-pole, double-throw switch used to connect the gate of  $Q_1$  to either the arm of the new control or the arm of  $R_5$ . This arrangement would allow the selection of either three- or ten-minute intervals. **QST**

## June VHF QSO Party

(Continued from page 61)

W4FJ 1500-45-25-ABD	<b>ROCKY MOUNTAIN DIVISION</b>
W4KMS 144-16-9-A	
<i>West Virginia</i>	
W8ZLP 570-38-15-AB	<i>Colorado</i>
K2RTH/8 (4 opers.)	WA0SYS/0
13,091-241-53-ABD	2912- 91-32-A
W8SFSE/8 (4 opers.)	W0AJY 2304- 96-24-AB
2507-109-23-AB	K0CLJ 658- 47-14-AB

WA0PHZ/0 (6 opers.)  
6405-183-35-AB  
WA0SKH/0 (4 opers.)  
6068-161-37-ABD  
W0TVK/0 (W0TVK, WA0-MJR) 4932-134-36-ABD  
*New Mexico*  
K5EFW 4794-141-34-A  
W5IXR/5 1064-76-14-A  
*Wyoming*  
W7VDZ 3990-133-30-A

### SOUTHEASTERN DIVISION

*Alabama*  
K4WHW 2737-119-23-A  
WB4GZW (W4KUP, WB4-GZW) 820-41-20-A  
*Eastern Florida*  
K4AYO\* 19,176-376-51-A  
WB4BND 6498-171-38-A  
W4OJU 3000-100-30-AB  
WB4HDZ 2976-96-31-AB  
K4IXG 1342-61-22-A  
WB4LNH 1000-50-20-A  
W4PBA 90-10-9-A  
*Georgia*  
WA4NJJP 11,328-236-48-AB  
W4CAH 416-26-16-AB  
W4ISS 54-9-6-B  
*West Indies*  
W1HOY/KP4 1656-72-23-A  
*Western Florida*  
W4SRX (K1WYS, opr.) 12,650-253-50-AB

### SOUTHWESTERN DIVISION

*Arizona*  
WA7BBM/7 3762-114-33-AB  
WA7JTM 2222-101-22-AB  
*Los Angeles*  
K6SSN 3197-139-23-AB  
W6QCV 2159-127-17-AB  
WB6UZY 1040-65-16-A  
WB6CGZ 342-38-9-A  
WA6TNK 200-50-4-B  
*Orange*  
K6YNB/6 3306-167-19-ABC  
WA6FIT 360-90-4-B  
WB6YXY 300-60-5-B  
WB6PHO 112-28-4-AB  
WA6MKN 64-16-4-B  
K6BPC (18 opers.) 11,136-440-24-ABCE  
W6NGN/6 (7 opers.) 10,080-288-35-AB

*San Diego*  
W6QED 752-47-16-AB  
WA6COE/6 12-6-2-B  
W6VON (5 opers.) 2134-194-11-AB  
*Santa Barbara*  
WB6QLY/6 96-24-4-B

### WEST GULF DIVISION

*Northern Texas*  
W5OQN 4862-143-34-A  
*Oklahoma*  
WA5OUU 5002-122-41-AB  
K9DKW/5 2291-79-29-A  
WA5WRC 760-38-20-A  
WA5LXT 300-30-10-A  
W5VTM 85-17-5-B  
*Southern Texas*  
W5RAG 14,400-300-48-A  
WA5IYX/5 6734-182-37-A  
WA5PDD 4212-117-36-A  
WA5ONI 4-4-1-B

### CANADIAN DIVISION

*Quebec*  
VE2JB/2 116-29-4-B  
VE2BMH 32-8-4-A  
VE2DFO/2 (5 opers.) 16,240-278-58-ABCD  
VE2RM (9 opers.) 9600-187-50-ABD  
VE2HW (3 opers.) 1650-55-25-ABCD  
*Ontario*  
VE3CUA 3276-91-36-AB  
VE3CRU/3 910-91-10-AB  
VE3FIB (VE3s ASO EW FIB) 17,248-299-56-ABCD  
VE3SAU (6 opers.) 5538-142-39-AB  
*Manitoba*  
VE4MA 1404-54-26-A  
*Saskatchewan*  
VE5AAA (VE5GG, opr.) 832-52-16-A  
*Alberta*  
VE6OH 2100-84-25-A  
*British Columbia*  
VE7XF 1022-73-14-AB  
VE7ASM/7 (7 opers.) 531-99-9-AB

### FOREIGN

XE2XN (K5HVC W5ETG XE2XN) 12,240-306-40-A **QST**

## 1968 VE/W Contest Results

(Continued from page 64)

<i>Wyoming</i>	<i>Orange</i>
c.w.	c.w.
WA7FKD 6480-36-9-7-B	W6KNE 58,320-162-12-18-A
W7VJI 6000-25-8-7-A	WB6VYU 37,800-105-12-16-A
<i>phone</i>	<i>phone</i>
K7QGV 6000-25-8-9-A	WB6VYU 3600-15-8-6-A
WA7FKD 450-5-3-1-A	
W7VJI 30-1-1-A	
<i>Santa Clara Valley</i>	<i>Utah</i>
c.w.	c.w.
K6CQF 63,720-177-12-15-A	WA7FBL 7290-27-9-5-A
WB6YNK 51,840-144-12-18-A	
WB6TNU 42,900-130-11-11-A	<i>phone</i>
W6GBY 12,540-38-11-10-A	WA7GWU 6090-29-7-A
<i>San Francisco</i>	
c.w.	
W6BIP 35,880-138-13-14-B	Check logs: c.w., W1JE, W2ICO, W3NB, WA8MCQ phone, W4-HOS <b>QST</b>
WB6YMW 14,100-47-10-17-A	