

Results

22nd ARRL V.H.F.

Sweepstakes

REPORTED BY

BOB HILL,*

WIARR

WATIAN's 2-meter beam, jolted unmercifully by r.f. overload from that big sig of **W2JKI**, finally capitulated at the end of the contest.

ANYONE who has ever participated in a V.H.F. Sweepstakes knows that this contest is, as much as anything else, a test of sheer perseverance: conditions usually vary from poor to poorer, and only the strong (in signal as well as stamina) survive. In January we have to make do without the sporadic-*E* that enlivens a June QSO Party and the aurora that often lights up the September affair. So, while the SS does stir up a goodly amount of activity among the club enthusiasts, it's still basically a matter of plugging away without benefit of glamorous propagational trickery to perk things up. Yet those who do well can bask in the feeling of contentment that comes from having succeeded in spite of instead of because of!

We can't exactly crow about participation in SS No. 22: only 899 logs found their way to Newton, as compared with 964 last year and 1123 the year before. Could it have been that too many World Abovers were still recuperating from New Year's Eve as late as the weekend of January 4-5? Certainly the weather in most parts of the country wasn't any worse (or any better) than is usual when the calendar gets flipped over to start another annum. There is conviction in some quarters that 6-meter c.w. contest operation was dealt a severe blow by the FCC, what with Generals-and-below being restricted to 50.1 and above. Still and all, we can hope for a better turnout to usher in the next decade. So when you draw up your list of New Year's resolutions for abstaining from beating the wife and kicking the dog, why not resolve to join the SS fray? Put a large red circle around January 10-11.

Because v.h.f. propagation is inherently unfair, rewarding as it does the thickly-populated northeast with a smile and the rest of the U.S. and Canada with a sneer, just about all the big scores come out of the first, second and third call

areas. The boys work plenty hard for those impressive totals, however, and deserve full credit. Top single-operator marks were earned by **K3IPM** (43,456), **W3MFY** (41,912 and a record 806 QSOs), **K8UQA** (34,232), **WB2MTU** (30,300), and **WA3CAG** (26,052). Other call-area leaders were **W1MEH**, **K4SUM**, **WA5TXI**, **K6YNB/6**, **W7FN**, **K9HMB** and **W0PFP**; **VE3ASO** was high man for Canada. Plaudits for leading multiop results go to **W2JKI** (41,965), **WB2GKE/2** (40,599) and **WA8PLZ** (29,684).

Clubs

The Mt. Airy V.H.F. Radio Club makes it nine gavel in a row; their three top scorers placed in the top five single-op contest entries, and 21 of their 74 logs exceeded 10,000 points. (Seems like those Pack Rats are simply unbaitable!) **WB2MTU** paced the South Jersey Radio Association to second place. Last year's runner-ups (or is that "runners-up"?), the Rochester V.H.F. Group, again turned out *en masse* but had to settle for third. The Albany Amateur Radio Association, sparked by erstwhile Hq. staffer **WA2BAH**, retained control of fourth position. Fifth spot, and the only other total over 100K, was claimed by the Mobile Sixers Radio Club.

In all, 31 ARRL-affiliated clubs entered the competition, vs. 33 in 1968. Strangely enough, with sections scarcer and scores lower, there were five clubs aggregating more than 100,000 points; only three managed this pinnacle last year. Did *your* club compete?

Soapbox

"Although there were not very good band openings, there was still much to be had on 6 and 2 c.w. I worked over a fourth of my stations on 2 c.w." — **WA3JWL**. "Had water seepage into basement for more than half the contest, so it was necessary to interrupt operating for 5 or 10 minutes at least twice an hour to mop up and bail out." — **W3LUL**. "Been a ham for 37 years and this was my first contest." — **W3MSM**. "Conditions on 6 made it very difficult to work as many sections as I had hoped. A.m. saved the day

* Assistant Communications Manager, ARRL



on that band! Two-meter conditions were very good, with many stations participating." — **WB2YEH**. "Well, as usual my statement of many years concerning these silly contests has held. That is, these contests are a license for the contestants to use any terrible signal that they can put on. Everything in the way of good technical operating goes by the boards, and this goes for both a.m. and s.s.b. Conditions were not the best. Signals in Trenton from New England and the D.C.-Va. area were weak and not up to the usual signal level. The scatter signals from the west were very good and could indicate what could take place if there were more activity. Why is a 34-hour endurance test necessary in these V.H.F. Sweepstakes? It seems to me that 20 hours is plenty of time for an operating contest. After all, people do have to go to work Monday and amateur radio is only a hobby!" — **W2AXU**. "It seems that Western Mass. is getting as hard to work as Vermont. Where do they all hide?" — **W2WGL**. "Very enjoyable contest, good club participation, beautiful weather." — **W2OW**. "Just got a 32-element collinear up for 2 meters Saturday night in sub-zero weather and it worked great." — **W3ISY**. "I've experienced noisy conditions before, but nothing like that which prevailed during this contest. Even locals were difficult to read. Now bring on June!" — **W3BAK**. "If this is the year of the supposed sunspot peak, why is there a significant lack of good band openings in northern Illinois and surrounding area while all over the U.S.A. propagation is great? I know 6-meter activity is low here, but that has nothing to do with propagation. On openings (as poor as they are) mainly s.s.b. stations are heard. Is a.m. really out?" — **W9FIY**. "Glad to note the appearance of many new calls on v.h.f. It would be nice if they would continue to operate after the contest." — **W9ULU**. "The new licensing is OK, but not on 6. Not one signal was copied from 50.0 to 50.1, and the c.w. was well mixed with the s.s.b. just above 50.1." — **K9QCB**. "This was my first contest from Indiana and it isn't like the East Coast. It is obvious I will have to get more power and put my antenna

Thirteen can be a lucky number when you have 13 operators to make 522 QSOs in 29 sections. That's the success story of **WB2GKE/2**, the Interstate V.H.F. Society, whose gang operated from one of the highest points in N.J. This view of the 6-meter position shows a jolly group consisting of (standing l to r) **WA2AOL**, **WB2WIK**, **WA2DZL**, (seated l to r) **WA2BAT**, **WA2FWZ** and **WA2DBD**.

higher and stack my two beams to reach out where the stations are. It was fun but had to dig for every contact." — **WA9ZRH**. "Six-meter conditions in Wisconsin were at their worst." — **WA9EZU**. "I'm ashamed to send in such a score. The lowest level of activity I can remember for this contest. Local activity nil, propagation miserable, area activity sorry. Heard 5s, 9s and 9s, but none were in long enough to work." — **W4WQZ**. "I must say that things weren't going my way and, to me, the 2-meter band was lousy. I did hear an m.s. run on Jan. 5 at 0704 CST when **K4GL** was being called, but I was never able to figure out who was calling him." — **K4TAX**. "This is the first contest that I have worked and I must say it has been a great pleasure, and I have profited by the experience. I now have more confidence in my equipment and also more confidence in my personal ability in amateur radio. Since the contest I have accepted net control several times on a local net on 145.35 MHz., and have been complimented on my operations." — **W8YJC**. "Found again most of 2-meter activity crowded around 145.0 to 145.3. Greatest thrill was working **VE2APN** and **W8ZLP** back-to-back. That was 300 miles north and 300 miles south." — **WB2YQU**.

"It was a good thing that no band openings were predicted for the contest weekend, otherwise I would have been very disappointed. Groundwave to Conn. and Mass. was very good, but what happened to the rest of One-Land?" — **WA2VFO**. "Seems like the guys spent a mint on transmitters but not a penny on the receiver!" — **WB2ZTD**. "More scatter than local." — **W9ECV/8**. "This was a contest for the better stations and operators. Conditions were never extremely good, and what opportunities there were tended to favor the better-equipped stations and the most alert operators. Use of c.w. paid off handsomely on 144, and there was plenty of it. But on 50, the restriction of the c.w. band to Advanced and Extra Class licensees had the practical effect of eliminating effective use of this most effective contest-operating mode. In past years, use of c.w. on 6 has been a joy, but it was rough this time, with nearly all c.w. use being in the s.s.b. 'kilowatt alley' just above 50.1." — **W1HDQ**. "Activity was good on 2 meters, but everyone was clustered around 145 on phone. C'mon, fellas — spread out!" — **W4IQJ**. "Heard **KV4AD** working a **VE3**." — **K1KKK**. "This was my first experience with a v.h.f. contest and, although the number of stations heard was few and far between, it was fun and educational." — **W1QV**. "Konechno byl nastoyashchij SS." — **KL7ELA/1**. "50-Mhz. scatter was in during most of the contest; most frequently heard were **W8PLZ**, **W8VP** and **K8DOC**."

AFFILIATED CLUB SCORES

| Club | Score | Entries | Certificate Winner | Club | Score | Entries | Certificate Winner |
|--|---------|---------|--------------------|---|--------|---------|--------------------|
| Mt. Airy V.H.F. Radio Club (Pa.) | 635,127 | 74 | K3IPM | Six Meter Club of Chicago | 16,090 | 11 | WA9FIH |
| South Jersey Radio Association | 325,121 | 68 | WB2MTU | York Radio Club (Ill.) | 14,044 | 10 | WA9RLJ |
| Rochester V.H.F. Group (N. Y.) | 252,285 | 120 | W2CNS | Mid-Hudson V.H.F. Society (N.Y.) | 13,996 | 4 | W2CGM |
| Albany Amateur Radio Association (N. Y.) | 121,646 | 68 | WA2BAH/2 | Suffolk County Radio Club (N. Y.) | 13,228 | 7 | WB2UZU |
| Mobile Sixers Radio Club (Pa.) | 103,491 | 39 | W3IZU | Alexandria Radio Club (Va.) | 11,484 | 8 | W4VZR |
| Hampden County Radio Assn. (Mass.) | 67,994 | 38 | WA1HHN | Greater Pittsburgh V.H.F. Society | 11,330 | 9 | W3ISY |
| Talcott Mountain U.H.F. Society (Conn.) | 67,993 | 23 | K1HTV | Nittany Amateur Radio Club (Pa.) | 10,354 | 4 | WA6KPF/3 |
| Suburban Amateur Radio Club (Pa.) | 50,208 | 7 | K3MTK/3 | Lake Success Radio Club (N.Y.) | 8172 | 12 | W2TUK |
| Dayton Amateur Radio Assn. (Ohio) | 39,780 | 22 | W8KKF | Queen City Emergency Net (Ohio) | 8011 | 8 | W8HQQ |
| Rock Creek Amateur Radio Assn. (Md.) | 36,099 | 22 | W3LUL | Southern California V.H.F. Radio Club | 7182 | 4 | WB6IMV |
| Wantagh Amateur Radio Club (N. Y.) | 29,134 | 3 | W2VA/2 | Skokie Six Meter Indians (Ill.) | 4720 | 6 | WA9FIY |
| 1200 Radio Club (Mass.) | 22,231 | 13 | K1KNI | Central Michigan Amateur Radio Club | 4504 | 4 | K8AJC |
| Dutchess County V.H.F. Society (N. Y.) | 16,366 | 9 | WB2YQU | St. Louis Amateur Radio Club | 4200 | 7 | W0DSW |
| | | | | Murphy's Marauders (Conn.) | 3599 | 7 | WA9HHH/1 |
| | | | | Fulton Amateur Radio Club (N. Y.) | 2460 | 4 | WA2SOO |
| | | | | Six Meter Club of Dallas | 1914 | 4 | W5BWXX |
| | | | | Syracuse V.H.F. Club (N. Y.) | 1800 | 4 | K2AVA |
| | | | | Dividing Ridge Amateur Radio Club (Pa.) | 1733 | 3 | K3JCZ |

— **K1AGB**, "In the very early morning (2-5 A.M.) our noise level drops about four S-units below the 8 P.M. average, but there are times in the early evening when the noise can be as much as 20 db. above that average. It would be nice to see some way of encouraging contest operation on the higher bands (220 and 432)." — **W1MX**, "Conditions in southern N. H. were just plain rotten. Would you believe I had to send my section 15 times to get the two-way QSO points for Eastern New York? It's a shame there aren't any of the fellows brave enough to work out the details with some ski lodge (like Hogback Mt.) and sit around a roaring fire while they work a January contest." — **K1PMM**, "Really enjoyed this contest until hearing a great number of stations on 6 s.s.b. relaying contacts via a third station. What happened to our integrity?" — **K1DYL**, "It seems as if the moment a contest begins, the regulars on 2 meters go into hiding." — **W7IJV**, "We would like to thank you for putting on these events because of their benefit to band occupancy." — **K7VIT**, "Dead band conditions for entire contest. Scatter contacts Saturday night and Sunday morning into California were much appreciated. M.s. conditions were above average. Local contest activity much improved over last year." — **W7FN**, "Sure would like to know what some of the gang of 6s are using for antennas. Quite a few were almost solid copy when they pointed them our way. Did an awful lot of tailending on a certain 2-letter call in the area. No openings, but lots of fun." — **K7OFT**, "Many stations were heard that could not be copied because of the low percentage of modulation; could have made 2-way if only they had used a key." — **W7FQE**, "Toward the end of the contest, our pleas for contacts took on an air of comic drama; in fact, as we learned later, many v.h.f.ers (including ex-v.h.f.-contest-nut K6-JHV) left their TVs to listen to our fictional tales of icicles, 100-m.p.h. winds and numb fingers!" — **WA6ZTY/6**, "Quite a bit of 50-MHz. A.M. activity in the area. Scatter was quite prevalent at night. Heard W2s, VE2 and VE3s but could not contact them." — **WB4INE**, "Local N.C. activity very poor. Only one contact on 2m in my own state, but I made four Md. contacts (300 mi.), one Del. (300 mi.) and one N.Y. (475 mi.) contact on 2. The same situation on 432 where no contacts to be had in my own state, but one made to Va. about 200 miles away." — **W4-HJZ**, "The 6-meter band showed signs of opening, but didn't. Could hear some New England, New York, Ohio and Illinois stations in short bursts but had little chance to work them. It would have been wild if the skip had come in." — **WB4GKF**, "Everyone tried, but conditions just didn't cooperate." — **K4GL**.

"I've always wanted to try what the larger multiop groups do: haul a good tower, enough equipment for a full-blown contest effort, and a power source, to a mountaintop — but all by myself. I finally did that for the V.H.F. SS, and I can say that spending two nights in January alone on a remote mountaintop is a memorable experience. At least

This is "The Poor Farmer of Sicklerville," **WB2MTU**. His antenna crop looks pretty healthy this year: 5 elements on six at 100' and 42 elements on two at 106'! Tony's 30K paced SNJ by a comfortable distance. (Maybe there really is something to that old gag about planting iron filings . . .)



DIVISION LEADERS

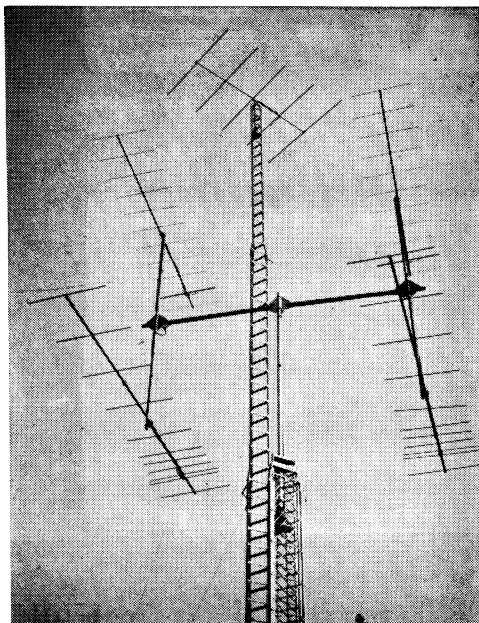
Single Operator

| | |
|---------|--------------|
| K3IPM | Atlantic |
| K9HMB | Central |
| WA0FWR | Dakota |
| WA0UWL | |
| WB4IOB | Delta |
| K8UQA | Great Lakes |
| K2RTH | Hudson |
| W0PFP | Midwest |
| W1MEH | New England |
| W7FN | Northwestern |
| WA6FAC | Pacific |
| K4SUM | Roanoke |
| W0AJY | Southeastern |
| K6YNB/6 | Southwestern |
| WA5TXI | West Gulf |
| VE3ASO | Canadian |

Multioperator

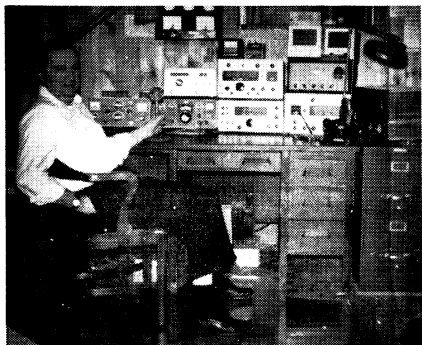
| |
|----------|
| W2PAU |
| K9YHB |
| |
| |
| WA8PLZ |
| W2JKI |
| WA0JYK |
| WA1EHL |
| K7VIT |
| W7SBC/7 |
| WA6ZTY/6 |
| |
| WA0PHZ/0 |
| WA6DIW/6 |
| |
| VE2BGJ |

I made it home with nothing worse than the flu to help me remember the weekend. If my score holds up, it was worth it." — **K6YNB/6**, "Six meters here was pretty punk for me. One of the Washington stations told me there were W6s coming through, but I never heard a peep from them. After working the local stations Sunday morning I never heard another thing on the band, so most of my points came from the f.m. portion of 2 meters. Wish there had been a few more W7s on the band." — **VE7AZG**, "Forgot about contest — crummy conditions — visiting relatives — Hong Kong flu, PHOOEY!" — **VE7XF**, "I would like to see the scoring system of this contest modified to allow power multipliers in order to help the low-power fellows using Twoers, etc., in their impossible battle with the high-power fellows with their top-notch receivers and converters, etc. Thank you for a wonderful contest that I enjoyed greatly." — **VE3FWV**, "Local participation average (lousy). C.w. only fair. To all Ws who missed VE3 section: Ottawa is due north of Syracuse!" — **VE3GAF**.



Scores

In the tabulation to follow, scores are listed by ARRL divisions and sections. Unless otherwise noted, the top scorer in each section receives a certificate award. An asterisk denotes a Headquarters staff member, ineligible for an award. Columns indicate final score, number of contacts, number of different sections worked, and bands used. A represents 50 MHz., B 144 MHz., C 220 MHz., D 420 MHz., E 1296 MHz., and up. Multioperator stations are shown at the end of each section tabulation.



WA2WZP ran roughshod over the competition in NNJ and just missed heading the list for the entire Hudson Division. Bruce ran a pair of 3-400Zs into 8L and 11L spinners.



Even from California you don't really have to have rotatable Yagis to make contacts on v.h.f. **WB6YCL** used Vee-beams and a long wire on 6 and had 37 two-ways.



VE3GAF notes that Ottawa-area participation was not exactly overwhelming, and adds that we Yanks would have a better chance of working VE3 if we turned our beams north once in a while!

ATLANTIC DIVISION

Delaware

W3CGV
6118-133-13-ABCD
K3OBU 2904-66-12- B
K3NYG 144- 6- 2-AB
WA3KFT/3
130- 5- 3-A

Eastern Pennsylvania

K3IPM
43,456-776-18-ABCD
W3MFY
41,912-806-16-ABCD
WA3CAG
26,052-501-16-ABC
W3KKN
24,300-451-17-ABC
K3IUV
22,490-433-16-ABCD
W3LHF
20,000-400-15-ABC
W3CL
17,688-402-12-ABC
W3HFY
17,688-402-12-ABCD
K3ZPN
14,688-306-14-ABC
WA3BIV
14,007-334-11-ABC
K3JJZ
13,788-383- 8-ABCD
W3GEW
12,768-336- 9-ABC
K3MTK/3 (WA3HGK,
opr.)
12,324-237-16-A
W3HK
12,282-267-13-AB
WA3EFS
12,084-318- 9-AB
K3GAB
11,772-327- 8-ABCD
WA3ADN
11,704-308- 9-AB
K3BPP
11,571-305- 9-ABC
W3IZU
11,198-255-12-ABC
W3CJU
10,944-304- 8-ABCD
W3SAO
10,656-296- 8-ABC
W3CCX (W3SAO, opr.)
10,620-295- 8-ABC
WA3EJY
10,032-209-14-B
W3ETB
10,026-279-18-AB
W3AJF
9720-270- 8-ABC
W3CXU
9450-225-11-AB
K3UJZ
9200-230-10-ABCD
W3MVF
8640-240- 8-ABC
K3PGB
8626-227- 9-A
K3MXM
8010-267- 5-ABC
WA3HIT
7840-280- 4-AB
K3QMK
7744-242- 6-AB
W3BBC
7744-242- 6-AB
WA3IVY
7744-242- 6-AB
W3SMK
7600-200- 9-AB
K3ACR
7378-217- 7-A
K3IGX
7089-209- 7-A
K3KTY
7084-253- 4-ABC
K3AQH
7038-207- 7-AB
WA3ERQ
6825-263- 3-ABC
WA3HVN (WA3FKM,
opr.)
6354-177- 8-B
K3NMM
6328-226- 4-AB
K3HSS
6214-239- 3-ABC
W3FCQ
6210-207- 5-AB
WA3IMT
6104-218- 4-AB
K3ZPQ
6018-177- 7-AB
W3HKZ
5916-174- 7-ABCD

K3ATL
5814-171- 7-AB
W3QXV
5700-190- 5-A
WA3IOB
5688-158- 8-AB
WA3FCZ
5628-201- 4-AB
K3DMA
5538-213- 3-AB
W3KXH
5490-183- 5-A
K3EPB
5460-182- 5-AB
WA3CND
5348-191- 4-AB
K3OBY
5200-200- 3-ABC
WA3GNV
5098-182- 4-AB
WA3JMM
4800-160- 5-A
K3ZKY
4480-112-10-AB
WA3BRV
4480-160- 4-AB
K3DUC
4440-148- 5-AC
W3JJO
4146-138- 6-AB
K3BOY
4170-139- 5-AB
K3VEQ
3666-141- 3-ABC
K3GQJ
3640-140- 3-ABC
K3EOE
3614-139- 3-AB
WA3JPL
3600-150- 2-AB
K3FYX
3584-112- 6-AB
WA3FEH
3444-123- 4-AB
W3ZRR
3432-132- 3-AB
K3TER
3406-131- 3-AB
WA3BTL
3200-100- 6-AB
K3WEU
3072-128- 2-A
K3YPL
3048-127- 2-A
WA3GQP/3
3024-108- 4-AB
WA3JWL
3016-116- 3-AB
K3KUB
3000-100- 5-AB
W3EXF
3000 125- 2-B
WA3HE
2910- 97- 5-A
K3DLS
2760-115- 2-BC
W3DGR
2760-116- 2-A
W3FA
2646- 95- 4-A
WA3HEB
2600-100- 3-AB
W3NSI
2580- 86- 5-A
W3WJZ
2340- 90- 3-A
WA3HVR
2280- 76- 5-AB
W3GXB
2184- 84- 3-BC
W3PST/3
2136- 89- 2-AB
W3IA
2072- 74- 4-B
W3BRU
1846- 71- 3-A
WA3JSR
1824- 76- 2-A
WA3FBC
1656- 69- 2-A
WA3IGY
1652- 69- 4-AB
W3DYL
1598- 47- 7-A
WA3LGC
1584- 66- 2-A
K3ZKO
1536- 64- 2-AB
W3IK
1378- 53- 3-ABCD
K3ZLL
1287- 50- 3-A
W2BHK/3
1248- 52- 2-A
W3GS
1014- 39- 3-A
K3AA
936- 36- 3-A
WA3KFT
900- 38- 2-A
WA3IEL
720- 30- 2-A
W3HYO
624- 26- 2-B
W3FQI
468- 18- 3-A
WA3KFT/3
442- 17- 3-A
W3OR/3
384- 16- 2-A
W3FQI/3
374- 17- 1-A
K3FYX/3
364- 13- 4-A
K3GZT
336- 14- 2-A
W3AWA
192- 8- 2-A
K3HNP
130- 5- 3-A
WA3HFI
110- 5- 1-A
K3QMK/3
44- 2- 1-A
W3BBC/3
44- 2- 1-A
WA3IVY/3
44- 2- 1-A
WA3FVK/3 (K3ZSG,
WA3FVK)
12,493-203-21-AB
W3LP (5 oprs.)
5976-266- 8-AB

WA3KIO/3 (4 oprs.)
8640-270- 2-AB
WA3IEM (WA3IEM,
IGV) 7968-249- 6-AB
WA3IUD (10 oprs.)
5888-184- 6-AB
K3IEC/3 (10 oprs.)
3160- 79-10-AB
K3FYU (K3FYU,
WA3HFA)
2400- 80- 5-A
WA3EKM (WA3S EKM,
FFR) 2324- 70-14-AB
K3WGI (K3S WGI WGI)
2184- 78- 4-ABC
K3WGI (K3S WGI
WGI)
2184- 78- 4-ABC
W3EVE/3 (WA3S HFL
KFT) 1632- 68- 2-AB
WA3HFA (K3FYU,
WA3HFA)
1560- 52- 5-A

Maryland-D.C.

W3LUL 6336-132-14-AB
W3HB 3360- 70-14-AB
W3CEV 3058- 70-12-A
WA3ELO
2880- 90- 6-A
K3FPE/3
W3GN 2400- 80- 5-AB
W3PIH 2200- 55-10-B
W3OTC 2176- 68- 6-AB
W3MNE 1980- 55- 8-B
W3LVC 1870- 55- 7-B
K3LFN 1716- 66- 3-AB
W3MHB 1600- 50- 6-B
W3Z 1568- 44-AB
W3FWP 1534- 59- 3-AB
W3FNU 1372- 49- 4-B
W3YAG 1316- 47- 4-B
K3GMB 1232- 44- 4-AB
W3MSM 870- 29- 5-A
W3PNU 840- 35- 2-B
W3ZCJ 832- 32- 3-AB
W3AEA 780- 30- 3-B
W3KUH 768- 32- 2-B
W3JQN 504- 21- 2-B
W3CEV 456- 19- 3-B
W3BNL 384- 16- 2-B
K3LZX 264- 11- 2-A
W3AIR 22- 1- 1-B
W3PGA (6 oprs.)
8784-183-14-AB
WA3EOP/3 (WA3S EOP
GYX JPI)
4050-135- 2-AB

Southern New Jersey

WB2MTU
3000-505-20-AB
W2ELF
20,775-416-15-ABCD
W2BV
20,764-358-19-AB
WA2EMH
18,765-350-17-ABCD
W2S2Z
13,148-346- 9-ABC
WB2YEH
11,676-278-11-AB
W2EA
10,626-253-11-AB
W2TQ
9900-275- 8-AB
W2AXU
9536-149-22-ABC
WA2DWT
9462-249- 9-AB
W2JAV
8280-207-10-ABC
W2ZUL
8256-258- 6-AB
WB2IOE
7956-234- 7-ABCD
WB2CDF
7740-215- 8-AB
K2EGH
6556-149-12-A
W2BLV
6240-120-16-B
W2ORA
6176-193- 6-A
W2OSD
5976-166- 8-AB
WB2JEP
5628-201- 4-A
W2EPA
5423-160- 7-B
WB2LWZ
5250-175- 5-A
W2VX
5220-145- 8-B
W3ALE/3
5187-124-11-AB
WB2UVB
5152-184- 4-AB
K2DFE
5088-159- 6-AB



Here's Tennessee and Delta Division winner **WB4IOB**, one of a small group of 4s who plugged away in spite of some of the worst propagation in the country.

| | | |
|---|--|---|
| WB2WVC 4920-164-15-AB | WB2JFL 3624-151- 2-AB | WB2CMR 1122- 51- 1-AB |
| WA2HVI 4800-160- 5-AB | K2JA 3600-150- 2-AB | K2YQT 1120- 50- 1-AB |
| WA2MGV 3752-134- 4-AB | WA2KVN 3564-149- 2-AB | W2DBS 1056- 48- 1-AB |
| W2EWN 3744-118- 6-AB | WA2YPT 3408-142- 2-AB | WA2TJS 1056- 48- 1-AB |
| WA2EYI 3724- 98- 9-A | W2DUC 3289-150- 1-AB | W2WGL 988- 26- 9-B |
| WA2BIW 3392-106- 6-B | K2WW 3216-134- 2-AB | WB2WBZ 924- 42- 1-B |
| WA2ONB 3318- 79-11-A | WB2ZFS 3192-133- 2-AB | WB2NSD 836- 38- 1-A |
| WB2YXI 3094-119- 3-AB | WB2EQW 2880- 96- 5-A | W2STM 792- 36- 1-A |
| W2QBH 3032-109- 4-AB | W2VVG 2860-130- 1-AB | WB2SMD 770- 35- 1-B |
| W2KF 3040- 95- 6-B | WB2UDV 2860-130- 1-AB | W2BFP 768- 32- 2-B |
| WB2VMD 3016-116- 3-A | W2OWF 2856-119- 2-AB | W2ZHB 696- 29- 2-B |
| W2DIL 3010-100- 5-A | WA2THS 2856-102- 4-AB | K2UCI 682- 31- 1-A |
| W2BAY 2912-112- 3-ABC | WA2HWC 2832-118- 2-AB | K2LCS 660- 30- 1-A |
| WA2AXF 2600-100- 3-B | WB2FZB 2816-128- 1-AB | WB2RJB 627- 29- 1-A |
| W2RBE/2 2430- 81- 5-A | WB2QXB 2808-117- 2-AB | K2AVA 616- 28- 1-AB |
| W2GVB 2208- 92- 2-AB | WB2MAB 2800-100- 4-A | W3QGL 572- 26- 1-A |
| WA2FCZ 2028- 78- 3-A | WB2VZH 2760-115- 2-AB | K2DJR 532- 23- 2-AB |
| W2UCV 2016- 84- 2-A | WA2FVC 2750-125- 1-AB | K2RTU 528- 24- 1-A |
| WA2YHD 1924- 74- 3-A | WB2HLI 2728-124- 1-AB | W2IYR 528- 22- 2-B |
| WB2OAD 1908- 53- 8-AB | K2JJT 2592-108- 2-A | W2UXP 528- 24- 1-AB |
| K2AA/2 (W2FYS, opr.) | W2LHM 2574-117- 1-AB | WB2LTN 528- 24- 1-AB |
| W2ZVR 1716- 67- 3-B | WB2WYH 2568-107- 2-A | WB2NXL 528- 21- 1-AB |
| WA2CLD 1704- 71- 2-A | K2YMM 2530-115- 1-AB | WB2WZ 528- 24- 1-B |
| WB2SPJ 1636- 69- 2-AB | WB2LZM 2178- 99- 1-AB | K2KKK 480- 20- 2-AB |
| K2MZR/ 1488- 62- 2-B | WA2EIJ 2112- 96- 1-AB | WA2GCX 462- 21- 1-A |
| WB2MNM 1488- 62- 2-AB | W2ECH 2054- 79- 3-A | WA2YSD 440- 20- 1-AB |
| W2SDB 1320- 55- 2-B | K2ZBJ 2040- 85- 2-AB | WB2HOI 440- 20- 1-B |
| WA2QZQ/1300- 50- 3-A | WB2BEH 2024- 92- 1-A | W2EKR 396- 18- 1-B |
| WA2ABY 1224- 51- 2-A | K2GMJ 1936- 88- 1-AB | K2BRE 374- 17- 1-A |
| WB2NPN 1224- 51- 2-A | WB2NJE 1920- 80- 2-AB | K2LZF 370- 15- 1-A |
| WB2CIW 1152- 48- 2-AB | WB2MCP 1914- 87- 1-AB | WA2GVH 330- 15- 1-B |
| WB2EFL/1040- 40- 3-A | WB2YJH 1870- 85- 1-A | K2HJY 286- 13- 1-A |
| WB2VLD 1032- 43- 2-A | DL7KX/W2 1848- 77- 2-B | WB2ET 242- 11- 1-B |
| W2HBE 624- 26- 2-B | WA2YSG 1848- 84- 1-ABD | W2UKA 176- 8- 1-A |
| W2VFG 624- 26-12-A | W2UAD 1824- 76- 2-B | W2BOC 154- 7- 1-A |
| WA2NPD 616- 22- 4-A | K2MGT 1804- 82- 1-AB | WB2EDT 154- 7- 1-B |
| W2BQ 504- 21- 2-A | K2ZFY 1760- 80- 1-AB | WN2EJY 154- 7- 1-B |
| WA2BPL 480- 20- 2-B | WA2YRH 1728- 72- 2-ABD | WB2BFH 66- 3- 1-A |
| WB2UVB/2 480- 20- 2-A | WB2SNA 1672- 76- 1-A | W2OW 1760-135-18-AB |
| WA2ABY/2 384- 16- 2-A | K2OPC 1650- 75- 1-A | WB2LZD (4 ops.) 4268- 97-12-AB |
| WA2CLD/2 264- 11- 2-A | WB2LJG 1650- 55- 5-A | WB2VPY (14 ops.) 1148- 41- 4-A |
| WA2FCZ/2 240- 10- 2-A | WB2DKA 1628- 74- 1-A | Western Pennsylvania |
| K2HBY 220- 10- 1-A | WB2HJN 1628- 74- 1-A | WA3ISY 3996-111- 8-AB |
| WA2MGV/2 198- 9- 1-A | WB2JGV 1608- 67- 2-AB | WA3BAK (W3BWU, opr.) 2664- 74- 8-ABC |
| WB2FDL 192- 8- 2-ADE | WA2AQW 1584- 72- 1-A | WA6KFP 2277- 50-13-AB |
| W2PAU (W2S ESX 1AU) 1920-425-14-ABC | WB2KUY 1540- 70- 1-AB | WA3ANO 1624- 58- 4-AB |
| W2REB (K2PWW, W2REB) 16,692-321-16-AB | WB2KWZ 1540- 70- 1-AB | K3AKR 1189- 33- 8-AB |
| WB2BNE (W2AKRX, WB2BNE) 14,063-370- 9-ABC | WA2SBO 1512- 63- 2-AB | W3DDM 1120- 40- 4-A |
| W2FYS (W2FYS, W3CXO) 9594-267- 8-AB | WB2ZUN 1496- 68- 1-AB | K3CJZ 870- 29- 5-A |
| K2MIO (K2S MIO RRC) 6750-225- 5-AB | WA2FKW 1474- 67- 1-AB | K3NOA 858- 33- 3-ABC |
| WA2DRI (WA2DRI, WB2S WRP ZPB) 4240-133- 6-B | K2UOA 1452- 66- 1-A | K3MLE 676- 26- 3-ABC |
| WA2GGY (WA2S GND YGY) 2916-122- 2-A | WB2GJL 1452- 66- 1-A | K3FTW 462- 21- 1-A |
| Western New York | WB2KYQ 1440- 48- 5-B | W3KJM 264- 11- 2-AB |
| W2CNS 12,844-247-16-ABCD | WB2INN (K9EOP, opr.) 1375- 63- 1-AB | WA3CCM 242- 11- 1-A |
| K2CEH 8464-184-13-ABD | WB2RVV 1364- 62- 1-A | K3IXR 228- 11- 2-A |
| K2YCO 8320-208-10-ABCD | W2RPO 1344- 42- 6-AB | WA3AWO 187- 9- 1-AB |
| W2UTH 7852-151-16-AB | K2RNV 1320- 60- 1-B | K3TTP 144- 6- 2-AB |
| WA2ZNC 5920-185- 6-AB | K2QWC 1320- 60- 1-A | W3AJDT 142- 6- 1-B |
| K2ISP 5376-168- 6-AB | WB2DPT 1320- 60- 1-B | K3HKK/3 (K2SVL, K3RBH, WA3JUV) 6825-133-15-AB |
| WA2GCF 5152-161- 6-AB | K2AIG 1298- 59- 1-A | WA3EOQ/3 (WA3S EOQ IJR) 1530- 90- 7-B |
| W2ALL 5130-171- 5-AB | WA2EKN 1298- 59- 1-B | Central Division |
| WA2TEY 5100-150- 7-AB | W2ECM 1254- 57- 1-AB | Illinois |
| WA2YTK 4530-151- 5-AB | WB2MBP 1254- 57- 1-AB | K9HMB 15,708-231-24-AB |
| W2QY 4472-172- 3-AB | K2DMA 1210- 55- 1-B | K9GHR 6210-207- 5-AB |
| WA2KND 4108-158- 3-ABD | K2TPO 1210- 55- 1-A | WA9JTK 4192-131- 6-B |
| K2RZJ 3960-165- 2-ABD | W2EJ 1166- 53- 1-B | WA9FIH 3510-135- 3-AB |
| K2RHS 3888-162- 2-AB | W2ICE 1166- 53- 1-AB | K9ENZ 3332-119- 4-AB |
| WB2NFI 3876-114- 7-A | WA2UGU 1166- 53- 1-A | WA9TMC 3108-111- 4-AB |
| | WB2ZJY 1166- 53- 1-A | WA9KJH 2990-115- 3-AB |
| | W2UZL 1128- 47- 2-B | WA9FXH 2940- 98- 5-B |
| | K2APX 1122- 51- 1-A | K9VCZ 2899-112- 3-AB |
| | K2PDZ 1122- 51- 1-B | WA9NRI 2626-101- 3-B |
| | K2UFD 1122- 51- 1-A | WA9ENM 2280- 76- 5-A |
| | W2DYY 1122- 51- 1-B | K9ZUW 2208- 92- 2-ABC |
| | | K9ZWW 2208- 92- 2-ABC |
| | | W9DJZ 1950- 75- 3-A |
| | | WA9TZH 1872- 72- 3-B |
| | | W9DY9 1820- 70- 3-B |
| | | K9DTB 1696- 53- 6-AB |
| | | WA9QPM 1620- 68- 2-B |
| | | K9VGN 1452- 66- 1-AB |
| | | WA9FYI 1392- 68- 2-AB |

| | | |
|---|---|--|
| WA9ULU 1248- 48- 3-B | Michigan | K8YVE 2720- 85- 6-AB |
| WA9ZHF 1166- 53- 1 B | W8CNI 1830- 61- 5-AB | WB8BIN/8 1300- 50- 3-B |
| K9SYA 1148- 41- 4 A | W8PST 1092- 42- 3-AB | W8CVQ 840- 35- 2-ABD |
| K9YJQ 1100- 50- 1-AB | W8RQJ 602- 22- 4-B | W8RQJ 602- 22- 4-B |
| WA9YZO 1034- 47- 1-B | W9ABA 1012- 46- 1-B | K8AJC 308- 14- 1-A |
| K9BDJ 1014- 39- 3-A | WA9LFR 984- 41- 2-B | W8WVU 264- 12- 1-B |
| W9ABA 1012- 46- 1-B | WA9ZGF 984- 41- 2-B | K8WEX 198- 9- 1-AB |
| WA9LFR 984- 41- 2-B | WA9MSZ 870- 20- 5-B | W8CKK 110- 5- 1-B |
| WA9ZGF 984- 41- 2-B | K9DYN 770- 35- 1-A | WA8USU 44- 2- 1-B |
| W9BOD 506- 23- 1-A | W9GYN 484- 22- 1-B | W8TJQ/8 (4 ops.) 3888-108- 8-AB |
| W9GYN 484- 22- 1-B | WA9IRZ 484- 22- 1-AB | Ohio |
| WA9IRZ 484- 22- 1-AB | K9QNA (WA9IRZ, opr.) 462- 21- 1-AB | K8UQA 34,232-389-34-AB |
| K9UCP 352- 16- 1-A | W9LYA 352- 16- 1-AB | W8MOW 11,178-207-17-AB |
| W9A9SC 352- 16- 1-B | K9YOA 308- 14- 1-A | W8VP (W8SFHF, opr.) 9600-180-20-A |
| K9YOA 308- 14- 1-A | K9DJK 242- 11- 1-A | W8KKF 6112-191- 6-AB |
| K9DJK 242- 11- 1-A | K9FHM 132- 6- 1-AB | W8SAJ 5700-150- 9-A |
| K9FHM 132- 6- 1-AB | W9ZEW 132- 6- 1-AB | W8IHC 3898-114- 7-A |
| W9ZEW 132- 6- 1-AB | WA9UUU 110- 5- 1-A | K8OWB 2782-107- 3-AB |
| WA9UUU 110- 5- 1-A | WB9ABT 66- 3- 1-A | W8BOB 2600-100- 3-AB |
| WB9ABT 66- 3- 1-A | K9YHB (K9REY, WA9EJZ) 2194-163- 9-AB | W8JRN 2548- 98- 3-AB |
| G3PAC/W9 (G3PAC, K9HMY) 5970-200- 5-AB | WA9QZE (WA9S QZE TCW) 2212- 79- 4-B | W8HJQ 2460- 82- 5-AB |
| WA9QZE (WA9S QZE TCW) 2212- 79- 4-B | Indiana | K8BPT 2310- 77- 5-A |
| K9QCB 4242-101-11-AB | K9QCB 4242-101-11-AB | W8IPT 2210- 85- 3-AB |
| K9LSB 1598- 47- 7-AB | W9AZRH 1118- 43- 3-AB | W8STY 1924- 74- 3-AB |
| W9AZRH 1118- 43- 3-AB | K9UBF 308- 14- 1-AB | W8SIK 1820- 70- 3-AB |
| K9UBF 308- 14- 1-AB | W9BZN/9 (9 ops.) 5742-160- 8-A | W8WEN 1764- 43-11-B |
| W9BZN/9 (9 ops.) 5742-160- 8-A | Wisconsin | W8UW 1728- 72- 2-AB |
| K3GCT/9 432- 18- 2-A | K3GCT/9 432- 18- 2-A | K8HRR 1500- 50- 5-AB |
| WA9EY/4 72- 2-A | W9YT (K9OXY, WA9S GJJ GZO) 3726- 83-13-AB | W8SCA 1378- 53- 3-A |
| W9YT (K9OXY, WA9S GJJ GZO) 3726- 83-13-AB | W9AYR (WA9S MCC SXN) 840- 28- 5-AB | W8YHN 1316- 47- 4-A |
| W9AYR (WA9S MCC SXN) 840- 28- 5-AB | Dakota Division | K8MHJ 1248- 48- 3-AB |
| Minnesota | WA9FWR 1300- 50- 3-A | W8YJC 1248- 52- 2-B |
| WA9UWL 1300- 50- 3-A | K9GYO 960- 40- 2-A | W8BVK 1200- 50- 2-AB |
| K9GYO 960- 40- 2-A | W9QIN 943- 22-13-A | W8PBX 1118- 43- 3-A |
| W9QIN 943- 22-13-A | WA9JHH 168- 7- 2-A | W8LXW 984- 41- 2-A |
| WA9JHH 168- 7- 2-A | Delta Division | W8DTU 968- 44- 1-AB |
| Louisiana | W5UKQ 384- 16- 2-B | K8GWI 888- 37- 2-AB |
| W5JFB 154- 7- 1-B | W5JFB 154- 7- 1-B | K8GVD 864- 36- 2-A |
| Tennessee | WB4IOB 912- 38- 2-AB | W8WAU 770- 35- 1-B |
| WB4IOB 912- 38- 2-AB | W4WQZ 810- 27- 5-ABD | W8RCN 768- 32- 2-A |
| W4WQZ 810- 27- 5-ABD | WB4JDD 528- 22- 2-A | K8DRO 756- 27- 4-B |
| WB4JDD 528- 22- 2-A | K4UWH 520- 20- 3-AB | W8TCG 728- 26- 4-B |
| K4UWH 520- 20- 3-AB | K4TAX 22- 1- 1-B | K8IK 704- 32- 1-B |
| K4TAX 22- 1- 1-B | Great Lakes Division | W8RLY 638- 29- 1-B |
| Kentucky | WA4CQ/G4 5258-120-12-A | W8KSE 624- 26- 2-A |
| WA4CQ/G4 5258-120-12-A | | W8LYM 616- 28- 1-B |
| | | W8SAHY 594- 27- 1-A |
| | | W8YXE 456- 19- 2-AB |
| | | W8BOV 440- 20- 1-B |
| | | K8DGE 360- 15- 2-A |
| | | W8DPU 352- 16- 1-AB |
| | | K8EJH 330- 15- 1-A |
| | | W8AGR 240- 10- 2-A |
| | | W8SCKB 216- 9- 2-A |
| | | W8CHT 198- 9- 1-A |
| | | W8ABNW 198- 9- 1-AB |
| | | W8YNNV/8 88- 4- 1-B |
| | | W8MPW 72- 3- 2-AB |
| | | W8PLZ (9 ops.) 29,684-724-31-AB |
| | | W8CCJ (12 ops.) 20,648-356-19-AB |
| | | W8RKM/8 (W8S VTW ZWJ, WB8IM) 4082-157- 3-B |

W8BI (5 oprs.)
2756-106- 3-AB
W8ZOF (W8ZOF, WA8-
HUB) 2470- 95- 3-AB
W8VND (4 oprs.)
1235- 48- 3-A

HUDSON DIVISION

Eastern New York

WA2BAH/2
14,761-255-19-ABC
WB2RBG
13,716-260-17-AB
WB2SIH
10,649-232-13-AB
W2CGM 9672-157-21-A
WB2YQU
6188-119-16-AB
K2DNR 5800-116-15-AB
WA2GDS
3852-107- 8-AB
K2TMB 3528- 84-11-A
K2TGB 3496- 76-13-A
WB2MHH
2296- 82- 4-AB
WA2WSY
2288- 88- 3-AB
WB2ICZ 2262- 87- 3-AB
WA2DTE
2184- 84- 3-AB
WA2VUO
2160- 72- 5-AB
WA2VQZ
1992- 83- 2-AB
WA2MCP
1734- 51- 7-AB
WA2JWO/2
1456- 52- 4-AB
W2C7H 1380- 46- 5-AB
WA2GGD
1326- 51- 3-AB
W2OOJ 1320- 44- 5-A
WA2KCB/2
1296- 54- 2-AB
WA2RWR/2
1200- 50- 2-AB
W2DSK 1128- 47- 2-AB
WA2OYV
1066- 41- 3-AB
WA2GXM
1056- 44- 2-AB
W2EOM 975- 38- 3-B
K2BUE 962- 37- 3-B
WA2PZB 930- 31- 5-A
W2FEN 840- 35- 2-B
W2HZZ 840- 28- 5-B
WB2GXF 800- 25- 6-AB
K2K7J 792- 33- 2-B
WA2BER 768- 32- 2-AB
WA2FXJ 767- 30- 3-A
K2ACB 748- 34- 1-AB
WB2SWB 744- 31- 2-A
WB2SWA 726- 33- 1-A
K2ZEL 672- 28- 2-AB
WB2QVX 660- 30- 1-AB
WB2OCN 638- 29- 1-A
W2AWF 624- 26- 2-B
WB2PZL 598- 23- 3-AB
WA2YRF 594- 27- 1-B
W2HP 570- 19- 5-AB
WA2HAQ/2
560- 20- 4-B
WB2ICI 552- 23- 2-AB
WB2JIK/2
550- 25- 1-AB
WA2HAQ 480- 16- 5-B
WB2NPR 468- 15- 3-AB
W2HCS (K2ACB, opr.)
462- 21- 1-AB
WB2HSS 456- 19- 2-A
W2MTM 418- 19- 1-A
K2ECJ 396- 18- 1-B
WA2HRE 380- 15- 2-B
WB2BDG/2
336- 12- 4-AB
WB2DVV 336- 14- 2-B
K2HUG 330- 15- 1-A
WA2BQP 288- 12- 2-AB
WB2VLM
286- 13- 1-AB
WB2VLM/2
264- 12- 1-AB
WB2CLF/2
242- 11- 1-AB
WB2PUH/2
242- 11- 1-B
WB2BZE 240- 10- 2-AB
WA2YAF 220- 10- 1-A
WB2TDF
220- 10- 1-B
W2KBH 196- 8- 2-B
WB2VLZ 176- 8- 1-A
WA2BRA/2
154- 7- 1-AB
WA2EAH/2
154- 7- 1-AB
WB2VMF/2
154- 7- 1-AB
WB2WVZ
154- 7- 1-AB
WA1FPS/2
144- 6- 2-AB
WB2BPS/2
132- 6- 1-AB
WA2ETB/2
110- 5- 1-A

WA2YAF/2
66- 3- 1-B
K2KVC 22- 1- 1-A
WA2YBK 22- 1- 1-A
WB2VB 22- 1- 1-B
WN2FWK 22- 1- 1-B
WN2HH 22- 1- 1-B
W2JKI (6 oprs.)
41,985-605-25-ABCD
WA2BLM (WA2s BLM
TYV)
12,006-261-13-AB
W2YPN (4 oprs.)
2106- 81- 3-AB
WB2FXB (WA1GWS,
WB2FXB)
1408- 44- 6-B
K2UKE (K2UKE, WB2-
OQU) 1170- 35- 7-B
WB2HWU (WA2BER,
WB2ZCM)
308- 14- 1-B

N. Y. C.-L. I.

K2RTH
18,414-279-23-AB
W2VA/2 WB2DIN,
opr.)
10,200-214-14-AB
WB2MZE
6834-201- 7-AB
WA2VFQ
K2RLW 3390-113- 5-AB
WB2UZU
3200- 80-10-AB



Lower Manhattan is probably not the world's best radio location, but **K2RLW** found it enough for a fifth-place finish among 31 NU single-op entries.

WB2TJE
2856- 84- 7-AB
W2TD 2908- 78- 8-AB
W2TUK 2400- 60-10-AB
WB2GWU
2144- 67- 6-AB
WB2TYR
2000- 50-10-B
WB2ZTD
2000- 50-10-B
WA2DPF
1952- 61- 6-B
W2QAN 1736- 62- 4-AB
W2KKX 1620- 54- 5-B
WA2EUS
1580- 52- 5-ABCD
WB2BNS 150- 45- 5-B
WB2TUT
1320- 44- 5-B
W2TNI 1316- 47- 4-B
WB2YYV
1260- 45- 4-B
WA2CJF/2
660- 22- 5-B
WB2BFE 504- 18- 4-B
W2AGT 448- 16- 4-B
W2NBI 308- 11- 4-B
W2ML 264- 11- 2-B
WB2YIG 216- 9- 2-B
WA2FSX 168- 7- 2-AB
W2ZPG 144- 6- 2-B
K2JFW 140- 5- 1-A
WA2YBO 22- 1- 4-B
WA2YKH 264- 11- 2-B
W2AEE (WB2WVB,
WB6NJK)
12,535-275-13-AB
WB2YZV (WB2s ESD
YZV)
12,100-275-12-AB
WA2CVS (WA2BCY,
WB2WOI)
9614-210-13-AB

WB2ENV (WA2HBP,
WB2s DRW ENV)
1156- 34- 7-B
Northern New Jersey
WA2WZP
17,496-324-17-AB
WA2YEI
3072- 98- 6-B
WB2ECU
2941- 87- 7-B
WA2GIE
1904- 56- 7-AB
WB2ZGA
1740- 55- 8-AB
W2CVW 1656- 47- 5-B
WA2FAX
1652- 59- 4-AB
W2JM 1530- 51- 5-B
W2MEO 1410- 47- 5-B
WB2HEO
1060- 38- 4-B
WB2VPR 988- 38- 3-B
WA2EO 494- 19- 3-B
WA2OOD 480- 16- 5-B
WB2GKE/2 (13 oprs.)
40,599-522-29-AB
K2OJD (4 oprs.)
18,816-336-18-AB
WA2UPK/2 (6 oprs.)
17,280-320-17-AB
W2GTF (5 oprs.)
942-259- 9-AB
W2TA/2 (K1ANV,
W2TA)
7992-222- 8-AB

K1HTV
10,179-177-19-B
WIHDQ*
3441-184-13-ABC
WAIED
6890-133-16-ABCD
W1VTV 5460-105-16-B
K1ZJH 5439-130-1-A
K1ZFE 5145-123-11-AB
W1WHL 4826-127- 9-AB
WAHQJ 4180-110- 9-AB
WA1HUE
4040-101-10-AB
WA1IGO
3924-109- 8-AB
KITZD
3528- 98- 8-ABC
WNIISD
2520- 71- 8-B
WAIUO
2412- 67- 8-AB
W1VLK 2340- 65- 8-A
K1KKK 1664- 64- 3-AB
WIENZ 1320- 55- 2-B
WILL 1312- 41- 6-A
WA1JLD
1230- 41- 5-B
WIPRT 806- 31- 3-B
WA9HHH/1*
800- 25- 6-A
W1WOG 696- 29- 2-B
WA1ICI 624- 24- 3-B
W1EXU 576- 22- 4-A
WIRNT 572- 22- 4-A
WAIGS 546- 21- 3-A
WAHCN 528- 22- 2-B
K1LELA/1*
507- 20- 3-B
W1WRE 494- 19- 3-AB
K1VIK/1 432- 18- 2-B
W1BNP 420- 15- 4-B
W1HAX 408- 17- 2-B
WA1HOL 407- 17- 2-B
W1QY 392- 14- 4-AB
WA1VD 384- 16- 2-AB
W1ICP* 336- 14- 2-B
WA1AO 312- 13- 2-B
WA1GOI 264- 11- 2-B
WNIISF 264- 11- 2-B
W1KE* 240- 10- 2-B
WA1UL/
216- 9- 2-A
K1QNF 96- 4- 2-A
WA1EHL (K1DQV,
WA1ANB)
14,560-260-18-AB
WA1HU (K1VIE, W1-
EXU, WA1UO)
8844-201-12-AB
W1ARR (W1ARR, WA9-
HHH) 1071- 33- 7-A
WA1GT (WA1s EDJ
FSK GTP)
736- 23- 6-AB
W1ORS (W1ASO, WAI-
HNL, WN1JIG)
216- 9- 2-B
Eastern Massachusetts
KIABG
9050-181-15-ABC
W1EJ
8400-168-15-ABD
K1KNI 3600-100- 8-A
WA1GXW
3486- 83-11-A
WA1FCD
3383-100- 7-AB
K1CHY
3315-111- 5-ABC
WA1GVH
2805- 83- 7-A
W1DC (K1NZQ, opr.)
2074- 81- 7-A
K1QY 160- 51- 6-A
W1BXI 1582- 57- 4-AB
W1AGN 1540- 55- 4-A
WA1GDR
1350- 45- 5-AB
WA1BLS
1280- 40- 6-A
W1JVL 1215- 41- 5-B
K1CQX 1148- 41- 4-AC
WA1HHK
1120- 35- 6-B
W1RSR 1118- 33- 3-AB
W1NPA 1008- 36- 4-A
W1CHF 702- 27- 3-A
W1EZA 264- 12- 1-A
WA1JPU 96- 4- 2-A
W1MX (5 oprs.)
10,373-226-13-ABCD
WA1HCH/1 (WA1s EIH
HRQ) 2772- 77- 8-A

New Hampshire
W1JSN 2012- 56-15-B
K1FPM 2480- 82- 5-A
WA1HZK 598- 23- 3-A
W1ALE 168- 6- 4-A
Rhode Island
K1TKN 4992-104-14-A
W1POP 2088- 58- 8-AB
K1JSG 1512- 42- 8-AB
W1CPC 900- 30- 5-A
Vermont
K1GYT 1260- 32-10-AB

Western Massachusetts
WA1HHN
8228-187-12-AB
W1VNH
5124-122-11-ABC
K1FWF/1
4408-116- 9-AB
K1DYL 3604-106- 7-AB
K1PYX 3120- 78-10-A
W1BZB 3024- 84- 8-AB
W1QWJ 2580- 86- 4-AB
W1UPH 2380- 70- 7-B
W1ALL 2310- 83- 4-AB
K1RPE 1984- 62- 6-AB
WA1EOR
1846- 71- 3-AB
K1ANF 1536- 51- 8-AB
K1ULZ 1764- 63- 4-AB
W1CJH 1760- 55- 6-A
WA1GZO
1752- 73- 2-AB
K1NJC 1710- 57- 5-AB
W1BZB 1530- 45- 7-B
W1CJH 1530- 45- 7-B
K1LMY 1344- 48- 4-AB
W1UCB 1288- 46- 4-AB
WA1CYK
1248- 52- 2-B
W1TTL 1224- 36- 7-A
K1LDT 1144- 44- 3-B
WA1GOK
1092- 39- 4-AB
W1NY 1040- 40- 3-B
W1MDM 984- 41- 2-AB
K1PMK 960- 40- 2-B
K1BNS 868- 31- 4-A
W1OBQ 832- 32- 3-B
W1KK 806- 31- 3-B
K1WXX 756- 27- 4-B
W1ALL/1
728- 28- 3-B
K1ESN 600- 25- 5-B
W1UPF 552- 29- 2-AB
K1LJH 544- 17- 6-A
W1UWX/1
468- 18- 3-B
W1KUL 448- 16- 4-A
W1UE 384- 16- 2-AB
K1CZZ 364- 14- 3-B
W1UWX 336- 14- 2-AB
WA1BTU/1 (5 oprs.)
5586-148- 9-AB
W1KXM/1 (4 oprs.)
5508-13- 3-AB
W1UKR (W1s KUE
UKR) 1792- 56- 6-A
W1A1N (WA1s HIX
1AM IAN)
1350- 45- 5-AB

NORTHWESTERN DIVISION

Oregon

WA7LJV 1392- 58- 1-AB
K7WXX
1368- 57- 2-AB
K7ZIR 1066- 41- 3-AB
WA7GFP 682- 31- 3-AB
K7VIT (K7VIT, WA7-
HAA) 1680- 70- 2-AB
WA7ECY (K7ZCB,
WA7ECY)
864- 36- 2-AB
Washington
W7FN 2718- 77- 8-A
K7OFT 2002- 73- 4-A
K7VNU 1066- 41- 3-AB
W7FQE 432- 38- 2-B
W7SBC/7 (13 oprs.)
1680- 70- 2-A

PACIFIC DIVISION

East Bay

WA6ZTY/6 (WA6ZTY,
WB6TIE)
6615-221- 5-B

Nevada

WA7GXM
512- 16- 6-A

Sacramento Valley

WB6VEO/6 (WB6VUH,
opr.) 2400- 80- 5-AB
WB6NTL
2142- 63- 7-AC
WB6YCL
1110- 37- 5-A
W6KDJ 208- 8- 3-B
WA6JDT 120- 5- 2-B

San Francisco

WA6JUV 468- 18- 3-AB

San Joaquin Valley

K6GSS/6
3306- 87- 9-AB

WA6NRV
3024- 72-11-B
W6YKS 420- 14- 5-B

Santa Clara Valley

WA6FAC
5760-160- 8-AB

K6DTR 1952- 61- 6-AB
 WA6OMJ 756- 27- 4-B
 WA6YGF/6 (4 oprs.)
 4830-161- 5-AB
 WB6YNP (WA6DXC,
 WB6YNP)
 2346- 69- 7-BD
 WB6WLE (WA4VKA,
 WB6s RGR WLE)
 1108- 43- 3-AB

ROANOKE DIVISION

North Carolina

K8YKO/4
 2100- 70- 5-A
 WB4INE
 1536- 48- 6-A
 W4HJZ 570- 19- 5-ABD
 WB4GKF 555- 19- 5-A
 WB4CES 504- 21- 2-AB
 K4DFI 374- 17- 1-B
 WB4HTR 252- 11- 2-A

South Carolina

K4GL 532- 19- 4-AB
 WB4BVF 234- 9- 3-A

Virginia

K4SUM
 5418-129-11-ABD
 W4VZR 1836- 51- 8-B
 W4HRA 1232- 44- 4-B
 W4LYX 1136- 36- 6-B
 K4TXD 352- 11- 6-B

West Virginia

WA8ZLP
 1598- 47- 7-AB
 K8JLW 1428- 42- 7-A

ROCKY MOUNTAIN DIVISION

Colorado

W0AJY 1344- 56- 2-AB
 K0YJG 704- 32- 1-AB



WA0PHZ/0 (4 oprs.)
 1320- 60- 1-AB
 Utah

K6DLY/7
 22- 1- 1-B

SOUTHEASTERN DIVISION

Alabama

K4WHW 704- 32- 1-AB
 K4EAO 264- 12- 1-AB

Eastern Florida

W4OJU 1364- 62- 1-AB
 WB4KUN
 624- 24- 3-A
 WB4HML
 594- 27- 1-B
 WB4HIR 286- 11- 3-A

Georgia

W4PYM/4 (K4KJP,
 WA4HKX, WB4FNV)
 572- 22- 3-AB

West Indies

KP4DFH 165- 8- 1-A

SOUTHWESTERN DIVISION

Arizona

WA7GUH 88- 4- 1-A

Los Angeles

WB6CKT
 3870-129- 5-AB
 WB6IMV
 3052-109- 4-ABC
 K6BPC (W6FNE, opr.)
 2472-103- 2-AB

WA6KIK
 1274- 49- 3-A
 WB6YVP/6
 384- 16- 2-B
 K6SSN 264- 11- 2-B
 WB6UZY 260- 10- 3-A
 WA6DIW/6 (WA6DIW,
 WB6s FRD RJG)
 3912-163- 2-AB

Orange

K6YNB/6
 7680-256- 5-AB
 WB6PHO 672- 28- 2-AB

WEST GULF DIVISION

Northern Texas

WA5LUM
 1210- 55- 1-A
 K5WVX 1180- 30-10-A
 W5BWV 924- 42- 1-A
 K5YKK 506- 23- 1-A
 K5ZAM 264- 12- 1-A
 K5CMC 220- 10- 1-A

Oklahoma

WA5OUU 770- 35- 1-AB
 WA5RCG 552- 23- 2-AB

Southern Texas

WA5TXI
 1638- 41-11-A

CANADIAN DIVISION

British Columbia

VE7AZG 888- 37- 2-AB
 VE7XF 312- 13- 2-A

Ontario

VE3ASO 7130-155-13-B
 VE3BQN (VE3ABG,
 opr.) 4488-102-12-BD
 VE3FWV
 3328-128- 3-B
 VE3DSQ 2091- 62- 7-B
 VE3ERQ
 1800- 75- 2-B
 VE3AIB 816- 34- 2-BD
 VE3GAF 510- 17- 5-A
 VE3OJ 480- 20- 2-AB
 VE3DNR 432- 18- 2-B
 VE3AQT 286- 13- 1-B

Quebec

VE2BMH 198- 9- 1-A
 VE2BGJ (5 oprs.)
 2288- 53-12-ABD
 Check logs: WA1KMT,
 W7MRX.

