

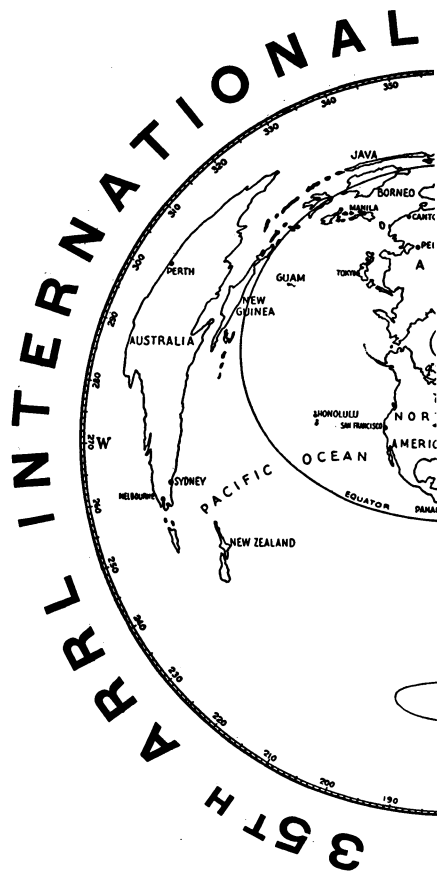
AROUND the world in 80 days, in its era, I'm sure was considered a major achievement. In modern times, through the miracle of communications, the world may be spanned in minutes with relative ease. Amateur radio, and in particular the ARRL International DX Competition, seems to illustrate this quite vividly.

Some people may comment as to the declining interest in contests but such was not the case in the 35th ARRL International DX Competition which soared to record heights in 1969 with 2468 logs received from 118 different countries. This represents an increase of over 10 percent as compared to last year and is some 41 logs greater than the previous high of 2427 entrants in 1967. With the exception of DX phone entries which dropped somewhat; all other figures rose considerably.

In entering any contest, each of us, by our actions becomes an ambassador of good will for the nation we represent. Suffice to say, our operating techniques should be of the highest caliber. Since I'd like to believe that this is the case almost 100 percent of the time, I feel only comments of a passing nature be given to the individuals who, by either lack of operating skill or just plain disregard for others, cause intentional QRM, tune up on frequency, fail to sign calls properly after each QSO, leave carriers on for long periods, etc., etc., etc. The problems remain the same from year to year, only the names (or, in our case, the calls) have been changed.

CLUBS

Thirty-two ARRL-affiliated clubs amassed 183 million points this year as compared to 27 clubs and 133 million points in 1968. Would you believe the **Potomac Valley Radio Club**, in claiming the usual lead position, increased their score by over 9 million points. How do you beat a group like that? Placing second was the **Frankford Radio Club** trailing some 4.7 million points behind. The **Northern California DX Club** unseated their rivals to the South, the **Southern California DX Club** in the show position; for what must be the upset of the year. The **128 Contest Club** was again 5th by a solid margin, while **Murphy's Marauders** nosed out the **Northern Illinois DX Association** to claim 6th place (up 1 from last year). Completing the Top 10 were the **Order of Boiled Owls of New York** who slipped from 6th place in 1968 to 8th, the **Laurentian DX Club** maintaining 9th and the **Richardson Amateur Radio Club**.

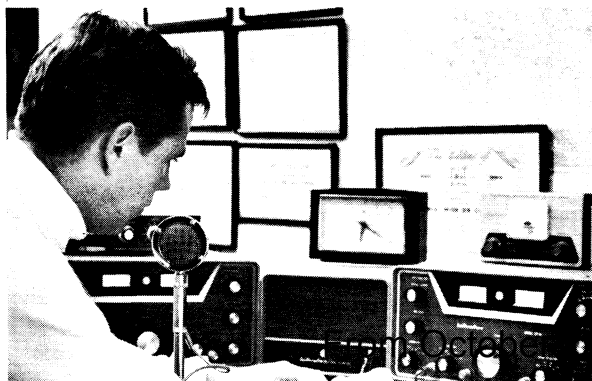


REPORTED BY

*Their sound hath
all the earth;
unto the ends*

* Communications Assistant, ARRL.

HC1TH, shown at his operation position in Quito, Ecuador. Tom's excellent score of over 4.6 million was good enough to rank him as number 2 in the Top 10 DX phone entries and also to win the South American DX Continental Championship. Sure wish we could increase participation from our neighbors to the South.



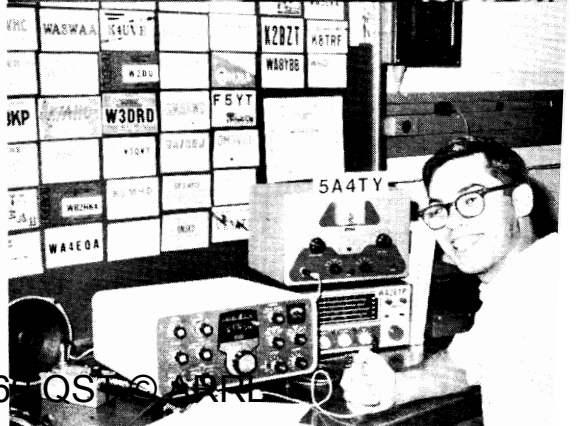


AL NOONE,* WAIKQM/WB6SAZ

*gone forth into
and their words
of the whole world.¹
— Rom. 10:18*

¹ Thanks to K9YRA

Among the rare stations which abound in each DX Test, we have (top to bottom): YK1AA, Rasheed in Damascus, Syris; KX6FJ, Stan in the Marshall Islands; KH6GPQ, Willard, Oceania Continental Champion both c.w. and phone from Hawaii; and 5A4TY, Bill (WA2ETP) from Wheelus Air Base, Libya.





Here's JX3DH checking ground conductivity on Jan Mayen Island Main Base, "Olonuik City," was site of JX3P multi-op phone operation.

Breaking down the Top 10 Affiliated Club scores by mode, we are left with an interesting grouping of each club's strong and weak points as shown by their position below:

| C.W. | Position | Phone |
|-----------------------|----------|-----------------------|
| Potomac Valley RC | 1 | Potomac Valley RC |
| Frankford RC | 2 | Frankford RC |
| 128 Contest Club | 3 | No. Calif. DX Club |
| No. Calif. DX Club | 4 | So. Calif. DX Club |
| So. Calif. DX Club | 5 | No. Illinois DX Assn. |
| Order of Boiled Owls | 6 | Murphy's Marauders |
| Murphy's Marauders | 7 | Richardson ARC |
| No. Illinois DX Assn. | 8 | 128 Contest Club |
| Laurentian DX Club | 9 | Laurentian DX Club |
| Richardson ARC | 10 | Order of Boiled Owls |

SOAPBOX

"Tried more than one band for the first time and was good fun." — *VK5FH*. . . "After dipping into the pile-ups in s.s.b. test, sure can appreciate c.w. a heck of a lot more." — *K9EUZ*. . . "Sixteen new countries, very nice contest." — *K2UNY*. . . "Ever try 7 MHz. phone with no remote v.f.o." — *WA1HNR*. . . "Had a ball operating in this test." — *K4KLC/KL7*. . . "Lots of fun, most of the boys cooperated very well." — *H18XR*. . . "Biggest thrill was being called on c.w. by 5A4TY, another highlight was working VR2DK after 3 hours of trying." — *WASATX*. . . "Lack of foreign stations on 3.5 and 7

MHz. made it a bit slow, conditions however were good." — *VE7VP*. . . "Think check sheets should be only one sided, turning them over and over again is a nuisance." — *W4NLF*. . . "Next year I hope to have a beam and better rig on all bands." — *KR6FT*. . . "Set an objective of 100 countries, which I found not too easy." — *K9GJD*. . . "Sorry it's over, I just enjoy the competition even though I only beat my own scores of other years." — *W2RFP*. . . "Found 7 MHz. conditions poor here during my operating time. Quite a few of the W/Ks didn't know whose side I was on, hi." — *VO1DC*. . . "Very first time for any c.w. contest." — *CT2AT*. . . "My first DX test and although I became hoarse and used many tranquilizers, I thoroughly enjoyed it." — *WA0TAM*. . . "Too much QRM to keep going on phone." — *K4CG*. . . "Conditions excellent to all areas of the world." — *WA9UMU*. . . "It is sure different working the contest from this end. I do not think my exotic call was an asset." — *8R1Y/W4*. . . "First time in my life I've gotten into Europe." — *WB6YWQ*. . . "It was a pleasure to take part and we are certain to do that again in the next year under the better conditions." — *UA9KAI*. . . "Sure was a lot of competition in the Sacred Segment of 15 meters." — *K1GAX*. . . "Conditions fantastic on 3.5 and 7 MHz. on first weekend, 10 meters extremely good on the second." — *W3MVB*. . . "Located at Msasani Bay north of Dar es Salaam in Tanzania." — *5H3LV*. . . "Working eight hour shifts at a local TV station on both weekends is a slight handicap." — *VE3BMB*. . . "How come so many DX stations working by call areas." — *K9PPJ*. . . "Wonder whether other fellows have as many breakdowns." — *G2QT*. . . "Lost all antennas in high winds, c u next year." — *OZ6DX*. . . "Not as much DX activity as I would have liked." — *W1YRC*. . . "Still too many W/Ks calling CQ DX right on top of the DX stations." — *W8YZE*. . . "Until this contest I can truly say that I did not know what a real pile-up was, thanks for the education." — *WA0RXQ/0*. . . "Low power doesn't get the job done, quite hard to compete from Idaho." — *WA7HOX*. . . "Back next year with an antenna farm." — *W5WMU*. . . "Good contest, enjoyed the pile-ups, got many new countries." — *WB4YZ*. . . "I was unable to enter the first weekend as I was on my way home from operation at VK0JW in Antarctica." — *VK4GU*. . . "Many thanks for the very nice contest." — *DM3XI*. . . "USA stations very fine operators, please all stations worked send me your QSL for awards." — *SP9ABE*. . . "Great contest." — *WB2ZIN*. . . "My first DX contest in years, had a ball." — *W1HRV*. . . "Damn good contest." — *W3MSK*. . . "The rules for this contest work and are accepted, please don't change them." — *W3KT*. . . "Very interesting contest, biggest thrill working VK0KJ and 5W1AR on 40 phone, a completely new experience for me. Congrats on the new check lists and the smaller page format." — *WA1DJG*. . . "Hope to be on all bands

AFFILIATED CLUB SCORES

| | Aggregate | Entries | C.W. Winner | Phone Winner |
|---|------------|---------|-------------|--------------|
| Potomac Valley Radio Club | 39,573,394 | 60 | W4KFC | W4BVV |
| Frankford Radio Club | 34,858,696 | 87 | W3WJD | W3MWC |
| Northern California DX Club | 18,395,497 | 66 | W8ISQ | K6AHV |
| Southern California DX Club | 15,398,576 | 50 | W6NJU | W6NJU |
| 128 Contest Club (Mass.) | 13,230,071 | 26 | W1BPW | W1AX |
| Murphy's Marauders (Conn.) | 9,276,130 | 42 | W1LDJG | K1THQ |
| Northern Illinois DX Association | 8,927,034 | 17 | W9LJK | W9QQN |
| Order of Boiled Owls of New York | 6,962,365 | 15 | WB2GKS | W2SUC |
| Laurentian DX Club | 4,632,561 | 15 | VE2NY | VE2NY |
| Richardson Amateur Radio Club (Texas) | 4,255,835 | 22 | W5EQT | W5KTR |
| Niagara Frontier DX Association (N.Y.) | 3,988,521 | 11 | K2KNV | K2DJJ |
| Overlook Amateur Radio Society (N.Y.) | 3,506,340 | 9 | W2DXL | W2DXL |
| Oak Park Amateur Radio Club (Mich.) | 3,127,218 | 19 | W8DQL | W8DQL |
| Central Michigan Amateur Radio Club | 2,539,134 | 12 | K1ZND/8 | W8SH |
| Virginia Century Club | 2,198,010 | 14 | W4OPM | W4SYL |
| Connecticut Wireless Association | 2,149,435 | 8 | W1B1H | W1B1H |
| West Park Radions (Ohio) | 2,028,885 | 20 | K8CFH | W81FA |
| Miami Valley Amateur Radio Contest Society (Ohio) | 1,908,270 | 13 | W8DB | W8LXU |
| South Jersey Radio Association | 1,783,959 | 37 | WB2ZPB | W2EPA |
| North Alabama DX Club | 853,087 | 5 | | W4ZNI |
| Winnipeg DX Club | 791,571 | 9 | | VE4FU |
| Four Lakes Amateur Radio Club (Wis.) | 656,634 | 7 | W9BG | |
| Louisville Active Radio Operators | 495,735 | 5 | W4LW | |
| Lincoln Amateur Radio Club (Nebr.) | 429,792 | 5 | | WA0LGR |
| Brightleaf Amateur Radio Club (N.C.) | 338,184 | 5 | | K4SK1 |
| Grand Rapids Amateur Radio Association (Mich.) | 301,950 | 6 | W8WE | W8HXZ |
| South Hills Brass Pounders & Modulators (Pa.) | 293,397 | 3 | | W2UFS |
| Lake Success Radio Club (N.Y.) | 157,280 | 9 | W2M2N | W2YFM |
| New Providence Amateur Radio Club | 91,482 | 9 | W2SE | W4OGG |
| Delta Radio Club (Tenn.) | 75,492 | 7 | | |
| Suburban Amateur Radio Club (Pa.) | 43,161 | 4 | WA3JKO/3 | |
| Chicago Radio Traffic Association | 8,028 | 3 | W9REC | |

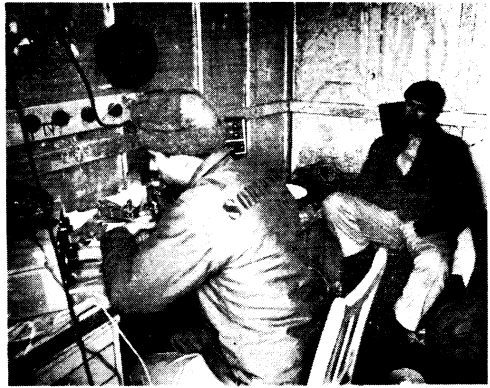
next contest." — *JX5CI*. . . "I really enjoyed the contest, North Americans are fantastic operators." — *CT11Q*. . . "I am strongly inclined to feel that single band entries should be allowed in order to increase participation." — *W6QJW*. . . "Too bad more of the really rare DXers didn't show up." — *K4II*. . . "Great contest, we all had a barrel of fun." — *W9EXE*. . . "Worked 5 new states for my WAS." — *UY5RV*. . . "First time in the c.w. part of the contest and it was a lot of fun." — *8P6CV*. . . "Your contest very good, cu agn in 1970." — *UR2LO*. . . "Suggest the contest be shortened to one weekend each, much renewed interest in the lower bands due to 5BDXCC." — *ET3USA*. . . "Tired of being called a YL since I'm only 13 years old, maybe I should go to cw." — *WA9ZCP*. . . "Had a ball, please don't shorten contest." — *W3QQL*. . . "Excellent conditions made this contest one to remember." — *W1FZ*. . . "My thanks to the DL4 station who did not want to work an F stn and carefully explained to me the contest rules." — *F3VN/W2*. . . "Despite limited time had lots of fun. Biggest thrill being called by YB0AAB, also working KA2RM on 80 thru 10 meters." — *W66SAZ/6*. . . "I suggest you change the contest to make it world-wide, I know the foreign stations get bored working only W/VE stations and I think this boredom explains the lack of Latin Americans and other countries in this contest." — *W8ILH/VE6*. . . "Power out the first weekend, had to fly to Sumatra part of the second. W/K stations most cooperative, wait till next year." — *YB0AAC*. . . "Entertained the local kids watching me try to rotate my beam out of the trees." — *WA7JCB*. . . "Best DX contest I have ever been in, a lot of pile-ups but I noticed more courteous operating than usual." — *W0UCK*. . . "I am full of admiration for the excellent operating standards of the W/VE group, their snappy procedure makes the handling of pile-ups so much easier when compared with some of the other major contests." — *EP2BQ*. . . "My first ARRL DX Test. Sure a pleasure, only sorry I could be with only some 40 hours because of my studies. CU — 70." — *OH8RC*. . . "Where was Wyoming." — *SV0WP*. . . "My roommate tells me that I was yelling QRZ Contest in my sleep following the contest, never could raise anybody!" — *WA4UXU*. . . "Please, please make it just one weekend for each mode." — *WB6URS*. . . "Conditions to Europe FB." — *K6YRA*. . . "Almost broke a rib laughing as a DX station called, CQ, won't anyone answer me. . . There must have been a thousand hams calling him." — *WA2YSQ*. . . "Special congrats to the DX stations for their patience, looking forward to next year." — *WAS1EM*. . . "Very pleased to participate in the contest again after an absence of over 10 years." — *G5COJ*. . . "My compliments to the W/VE gang who were real kind to me in the pile-ups. My first contest, really had a ball." — *KX6GS*. . . "I'm a fairly new ham and this was my first contest." — *5A4TY*. . . "What a shock when 5H3KJ said, "Mni tnx first VE1 in test," I gladly replied "Mni tnx first 5H3 ever." — *VE1AI*.

1970 ARRL DX COMPETITION

Phone: February 7-8, March 7-8

C.W.: February 21-22, March 21-22

. . . "This is really the king of all contests." — *W11HN*. . . "Pleased to see so much activity from the U.S.S.R." — *W9KYZ*. . . "Finally discovered you can work DX on 80 meters." — *WASHOM*. . . "Ten meter conditions outstanding the second weekend." — *WB2EUU*. . . "Worked only 5½ hours, couldn't spend more time due to my job." — *PA0KOR*. . . "Contest was fantastic." — *LU6ABX*. . . "My first appearance on 40 meters, so the W/VE stations were the first DX stations I worked at all. Very glad about it." — *DM3TOO*. . . "How about telling the DX stations there are W/Ks above 7.025 MHz, working the contest." — *WA8ZCO*. . . "Really got a thrill when I called CQ Test, and worked stations for about 2 hours straight." — *KH6GLP*. . . "This was my first serious attempt at contest operation and I really enjoyed every minute of it, including the moments when I lost control of my keyer. Hope to do better next time." — *VU2JN*. . . "W4BVV will be sad to learn that when I answered their CQ on 3.5 MHz, he was 439 here but my signals did not reach him." — *KR6EL*. . . "Good propagation on all bands, worked my 10,000th W/K station during the test." — *OD5LX*. . . "Conditions were exceptional on 10 meters, not so hot on 80. Where were all the VE boys?" — *VR2DK*. . . "Like the revised forms." — *K5QDV*. . . "Biggest surprise of the contest, ZD7DX on 75 phone, trying out his new rhombic!" — *K9CUY*. . . "Conditions fabulous, worked my first JAs on 40 meter phone ever." — *W3TLN*. . . "I like to work in your DX contest." — *Y04KCA*. . . "Why not separate entries for single-band operations. Thanks for a fine test, see you next year." — *I1BH*. . . "Conditions great, pile-ups and QRM murder." — *WB2NCS/VP9*. . . "Conditions of propagation very bad here." — *CR6GA*. . . "This contest was a ball." — *YB0AAB*. . . "Pet peeves — tuning up on frequency, leaving carriers on, continually calling regardless of fact DX is trying to transmit." — *W1ESN*. . . "Thanks for a good test, will be in there next year full swing on all bands." — *VE8ZZ*. . . "Nice contest, especially 10 meter band activity make nice work during test." — *SP3PL*. . . "Second weekend best radio conditions I have ever experienced in an ARRL DX Test." — *DL4FS*. . . "My first participation, real nice thrill." — *PY7VKZ*. . . "Just returned to the air after 20 years off, my first experience of the ARRL DX Competition was in 1939 and I have greatly enjoyed taking part once again." — *VK7CM*. . . "Had a great time in my first DX-pedition." — *VP7NA(W3AZD, opr)*. . . "Good to hear some



From the Subantarctic islet of Heard Island in the South Indian Ocean we present VK0WR, by far the rarest DX-pedition in many a year. Shown operating is Bill, W7ZFV with Henery, WB4HWP taking a well earned rest. At left the boys are shown wrestling the 2-element 20-meter beam into position. Brrr!

| Bold Face = Over 300 QSOs/Band — DX | | | | | |
|-------------------------------------|-----|-----|------|------|------|
| | 80 | 40 | 20 | 15 | 10 |
| CR6EI | 28 | 61 | 340 | 377 | 404 |
| EL2Y | | 259 | 622 | 340 | 326 |
| ET3USA* | 68 | 125 | 650 | 737 | 478 |
| ZD8Z | 286 | 898 | 1617 | 1587 | 1316 |
| 5H3KJ | 17 | 185 | 645 | 842 | 767 |
| 5H3LV | | 2 | 248 | 326 | 200 |
| 9J2MX | 11 | 93 | 516 | 619 | 694 |
| EP2BQ | 6 | 23 | 334 | 136 | 4 |
| EP3AM | 3 | 43 | 411 | 272 | 73 |
| HL9KQ | 13 | 94 | 243 | 363 | 125 |
| JAI1AEA | 49 | 163 | 760 | 1028 | 350 |
| JAI1LXE | | 74 | 32 | 388 | |
| JA2HO | | | 14 | 387 | |
| JA2JAA | 2 | 67 | 279 | 337 | 150 |
| JA3DGC | | 69 | 313 | 385 | 199 |
| JA3GZN | | 49 | 174 | 418 | 149 |
| UA9KAI* | | | 570 | | |
| UA9KOA | | 3 | 868 | 6 | |
| UA9OS | | | 584 | | |
| UA9PP | | | 531 | 83 | |
| UA9KFG* | 46 | 155 | 757 | 814 | 357 |
| UL7KAA | | 10 | 433 | 92 | |
| DJ4ZR | 79 | 297 | 825 | 973 | 490 |
| DL2JO | 4 | 21 | 73 | 306 | 263 |
| DL4QP | | | 96 | 337 | 149 |
| DL4QQ | 25 | 140 | 607 | 684 | 412 |
| DL6WD | 119 | 140 | 495 | 577 | 507 |
| EI9J | 80 | 128 | 534 | 511 | 270 |
| F5AH | | | 34 | 310 | |
| F5CS | 71 | 187 | 316 | 326 | 43 |
| F8TQ | 65 | 120 | 293 | 343 | 136 |
| F8VJ | 134 | 151 | 194 | 321 | 323 |
| F8ZF | 130 | 169 | 368 | 180 | 3 |
| G2QT | 93 | 156 | 320 | 280 | 333 |
| G2RO | 204 | 242 | 618 | 767 | 621 |
| G3ESF | 83 | 132 | 128 | 274 | 306 |
| G3FXB | 194 | 259 | 477 | 718 | 445 |
| G3JYP | 7 | 34 | 162 | 489 | 421 |
| G3KMA | 81 | 100 | 192 | 305 | 380 |
| G3TXF | 11 | 134 | 395 | 261 | 593 |
| GC3IEW | 156 | 165 | 725 | 621 | 703 |
| GW3ITZ | 94 | 100 | 363 | 500 | 273 |
| GW3NJV | 6 | 159 | 379 | 448 | 351 |
| HA5KDK* | 93 | 159 | 513 | 727 | 196 |
| HA8UD | 29 | 112 | 353 | 124 | 298 |
| HB9AGH | 42 | 149 | 208 | 442 | 174 |
| HB9DX | 65 | 31 | 152 | 383 | 134 |
| HB9UB | 71 | 224 | 720 | 970 | 526 |
| IIASE | | 266 | 580 | 571 | 246 |
| LA0AD | 72 | 204 | 763 | 776 | 680 |
| LZ1KAA* | 32 | 135 | 353 | 507 | 13 |
| LZ1KPG* | 20 | 209 | 215 | 116 | 311 |
| OH1AD* | 13 | 73 | 569 | 644 | 163 |
| OH5VT | | 15 | 412 | 328 | 176 |
| OH8RC | | 47 | 497 | 649 | 96 |
| OK1AOX | | | | | 157 |
| OK1ARN | | | | | 106 |
| ON4XG | 1 | 82 | 74 | 365 | 502 |
| OZ1LO | 139 | 203 | 644 | 820 | 533 |
| OZ7BG | 7 | 18 | 332 | 426 | 304 |
| OZ7G | | | | | 319 |
| OZ7X | | | 30 | 359 | 532 |
| PA0LOU | 127 | 256 | 623 | 369 | 588 |
| SK6AB* | 114 | 427 | 1166 | 1189 | 673 |
| SK6CF* | 64 | 234 | 831 | 925 | 384 |
| SM5CAK | | | 100 | 170 | 340 |
| SM6ARH | | | | | 483 |
| SM6DHU | | | 12 | 346 | 187 |
| SV0WP | | | | 575 | 503 |
| UA3KAO* | 1 | 58 | 457 | 492 | 72 |
| UB5MZ | | | 44 | 93 | 441 |
| UQ2KCT* | | | 1 | 202 | 353 |
| UR2LO | | | 25 | 387 | 55 |
| YU1BCD* | 62 | 262 | 635 | 897 | 290 |
| YU2REB | | 18 | 217 | 403 | 164 |
| HP1XHG | 388 | 443 | 883 | 814 | 759 |
| KL7IR | 99 | 285 | 588 | 811 | 591 |
| PJ2VD | 306 | 422 | 849 | 1141 | 901 |
| PJ8AA | 573 | 878 | 780 | 573 | 549 |
| VP7NA | 101 | 102 | 382 | 265 | 90 |
| VP9BY | | | 446 | | |
| XE2AAG | 152 | 187 | 607 | 879 | 425 |
| XE0GEN | 428 | 789 | 1181 | 937 | 800 |
| XE0GJR | 63 | 128 | 274 | 418 | 596 |
| 9Y4DS | | | 559 | 353 | 143 |
| 9Y4KK | | 114 | 435 | 423 | 383 |
| DX1AAV | | 79 | 508 | 337 | 135 |
| KH6GPQ | 309 | 558 | 873 | 1265 | 1115 |
| VK2EO | 90 | 373 | 925 | 497 | 497 |
| VK2GW | 20 | 25 | 392 | 343 | 225 |
| VK3APN* | 81 | 328 | 397 | 192 | 12 |
| VK6FH | 16 | 151 | 746 | 114 | |
| VK6FM | 17 | 72 | 543 | 236 | 217 |
| VK2BRJ/9 | 6 | 216 | 501 | 134 | 138 |
| VR2DK | 12 | 149 | 164 | 40 | 354 |
| ZL1AFW | 4 | 10 | 478 | 220 | 369 |
| ZL1AMO | 74 | 158 | 197 | 532 | 224 |
| ZL1LIL | 2 | 133 | 456 | 397 | 705 |
| 5W1AR | 1 | 161 | 306 | 128 | 312 |
| HK3BAE | 58 | 434 | 1033 | 855 | 1121 |
| LU2DKG* | | 2 | 307 | 235 | 370 |
| LU9DI | | | 12 | 60 | 361 |
| QA4DX | | 158 | 220 | 340 | 565 |
| YV1OB | 171 | 209 | 214 | 300 | 404 |
| YV4OY | 210 | 192 | 336 | 505 | 119 |
| K4PHY/YV5 | 323 | 558 | 669 | 551 | 339 |

* Multioperator station.

humor from KH6BZF during very crowded band conditions."—K3CFH. . . "My first DX contest, sure was exciting."—WB8BLA. . . "The operating practices of too many stations reflected unfavorably on amateur radio."—VE4MP. . . "Enjoyed the test very much, rules and organization first rate."—VE2WA. "Rotator broke just before the great 10 meter opening on the second weekend. Farewell 28 MHz. DXCC for this sunspot cycle."—W6ISQ. . . "Very good contest."—LA2Q. . . "Working mainly c.w."—F8UJ. . . "We always thought there were 50 states, but now realize there are only 49; Wyoming is a myth!—G3JOC. . . "Great contest."—W4ONO.

QRP CHAMPS

(150 Watts or Less at All Times)

| C.W. | Phone |
|---------|---------|
| W8QXQ | 635,715 |
| WA1DJG | 579,880 |
| WA3DSZ | 421,971 |
| WA4UXU | 337,980 |
| K5ABV | 384,462 |
| VE2YU | 306,327 |
| W1DXB | 376,688 |
| W4ORT | 289,152 |
| W4ORT | 292,842 |
| W3EPB | 254,667 |
| K2BMI | 277,376 |
| W2DKM | 248,472 |
| K0DQI/1 | 269,078 |
| WA5LUM | 237,864 |
| W2HUG | 265,872 |
| WB2ZPW | 236,328 |
| W2HDW | 260,475 |
| WB2ZTH | 226,284 |
| WB2RKK | 260,091 |
| VE6GN | 193,167 |

Thirty-Fifth ARRL

International DX Competition

W/VE scores are listed by ARRL division and section; DX scores are listed by continent and country-prefix. Multioperator scores follow single-operator scores within each section or country-grouping.

Awards: The operator of the first-listed single-operator station in each section or country is the winner for that area and receives a certificate award. In a section or country from which at least three valid multioperator entries were received, the top-scoring station in that category receives a certificate award. (Awards are scheduled for an October 15 mailing. The top-scoring single-operator DX entrant for each continent, each mode, receives an engraved plaque. Affiliated-club awards are shown elsewhere in this article.)

Scores: In the listing to follow, read (from left to right): call of entrant, final score, multiplier (total countries per band for W/VE; total states and Canadian call-areas per band for DX), contacts, approximate d.c. power input (A represents power up to and including 150 watts; B, over 150 and up to and including 500; C, over 500), total time of operation (to the nearest hour). Example: W3NX 594,156-268-739- C-70 indicates final score 594,156, multiplier 268, contacts 739, power over 500 watts, operating time 70 hours.

A single asterisk following a call denotes an ARRL Hq. staff member, ineligible for an award. A double asterisk following the call of a multi-operator entry denotes the use of a spotting-net.

C. W. SCORES

ATLANTIC DIVISION

Table listing call signs and scores for the Atlantic Division, including sub-sections for Delaware, Eastern Pennsylvania, and Southern New Jersey.

W3NZ (W3s NZ OV)

Table listing call signs and scores for W3NZ (W3s NZ OV) and other related call signs.

W3MSK (9 oprs.)

Table listing call signs and scores for W3MSK (9 oprs.) and related call signs.

Maryland-D. C.

Table listing call signs and scores for Maryland-D. C. and other regional stations.

Southern New Jersey

Table listing call signs and scores for Southern New Jersey stations.

Main table listing call signs, scores, and minimum number of countries for various bands. Includes a footnote: * Multioperator Station.



6Y0A, a special events multi-op station, was located at the Red Cross Building in Kingston which is the permanent QTH of 6Y5RA, the Headquarters station of the Jamaican Amateur Radio Association. Shown to the left is Chris, 6Y5CB, operating the 7/21 MHz. position; to the right, Chuck, W4WXZ and SWL Glen Little at the 3.5/28 MHz. operating table. Congrats to the gang, they have truly earned the North American DX Continental Championship, multi-op phone category.

| | | | | | |
|------------------------------|----------------------|------|-------------------------|-----------------------|------|
| WB9SCK | 1044-24-27- | C- | K3HZL | 305,153-197-517- | C-68 |
| WB2UVB | 1539-19-27- | A-2 | W43KOS | 131,703-143-307-BC-29 | |
| WA2IJS (K2CPR, W2UI, WA2IJS) | 521,850-245-710- | C-80 | K3VXV | 119,970-129-310- | A-40 |
| <i>Western New York</i> | | | | | |
| K2KNV | 1,038,258-306-1131- | C-73 | W3UT | 111,384-136-273- | B-38 |
| K2DJD | 729,468-276-881- | C-77 | W3YLJ | 81,360-120-226- | C-15 |
| W2FXA | 431,172-236-809- | C-36 | W3CTE | 35,640-90-132-BC-32 | |
| W2FBA | 386,043-217-592- | C-38 | WA3EFH | 12,834-46-93- | C-10 |
| W2FR | 209,442-201-348- | C-52 | W8SN | 3844-31-42- | A-22 |
| W2BJH | 193,386-167-389- | C-54 | W3QEI | 3780-28-45- | B-20 |
| W2QIP | 138,180-140-329- | C-36 | WA3GJU | 2376-24-33- | C-2 |
| WA2ADU | 100,206-114-293- | B-44 | W3VK | 1638-21-26- | A-12 |
| K2CD | 90,774-123-246- | C-33 | W3TV (6 ops.) | 2,737,200-400-2281- | C-90 |
| W2SSC | 80,634-151-178- | C-14 | CENTRAL DIVISION | | |
| W2CUI | 77,400-120-215- | B-41 | <i>Illinois</i> | | |
| W2BEX | 76,860-122-210- | A- | W9LKJ | 1,094,256-298-1224- | C-76 |
| W2YRH | 60,669-107-189-AC-26 | | W9RER | 499,743-249-669- | C-62 |
| W2FD | 60,588-108-187-AC-34 | | WA9IVL | 412,272-252-559- | C-64 |
| W2RPP | 51,198-108-161-AB-23 | | W9QQN | 385,710-230-559- | C-70 |
| W2PXL | 46,428-106-149- | C-30 | W9WYB | 303,408-196-516- | C- |
| W2VXA | 18,408-59-104- | A-44 | WA9LUD | 289,248-184-524- | C-53 |
| W2UJ | 9750-50-65- | B-36 | W9DWQ | 219,450-175-418- | C- |
| W2FUI | 9717-41-79- | A-60 | W9OHH | 185,148-148-417- | C- |
| WB2RXS | 6324-34-62- | B-21 | K9KDI | 139,425-143-325- | C-22 |
| W2ICO | 6120-34-60- | A-14 | W9UX | 114,258-137-278-BC-40 | |
| W2RJJ | 1380-20-23- | B-10 | W9QWM | 21,483-63-114- | A-15 |
| W2STM | 840-14-20- | B-3 | W9YYG | 14,868-42-118- | C-5 |
| W2CKM (WB2CPV, WA3HRV) | 636,740-260-817- | C-90 | K9JDV | 14,847-49-101- | C-22 |
| K2CC (4 ops.) | 225,108-156-481- | C-75 | K9UQN | 9324-42-74- | C-15 |
| <i>Western Pennsylvania</i> | | | | | |
| W3NU | 1,225,734-366-1125- | C-68 | W9REC | 7128-44-54- | B-20 |
| K7ADD/3 | 824,187-273-1007- | C-82 | W9TCU | 2016-24-28- | A-12 |
| | | | W9WR | 504-12-14- | B-11 |
| | | | W9HPG | 396-11-12- | A-5 |
| | | | W9KTB | 350-10-12- | A-16 |
| | | | K9YRA | 192-8-8-AB-16 | |
| | | | K9KXX | 60-4-5-B-7 | |
| | | | W9EXE (4 ops.) | 789,804-284-927- | C-82 |

| | | | | | |
|---------------------|--------------------------|------|------------------------|--------------------------|------|
| W9EM (4 ops.) | 323,950-209-521- | C-96 | DAKOTA DIVISION | | |
| | | | <i>Minnesota</i> | | |
| W9GEG (5 ops.) | 259,875-175-405- | C-96 | W9AKDI | 228,552-178-428- | C-61 |
| W9DY (W9DY, WA9OMM) | 254,610-230-369- | C- | W9DAK | 136,512-144-316- | C-37 |
| W9BZW (W9s BZW GAZ) | 199,656-177-376- | C- | K9EKR | 125,316-118-354- | A-56 |
| | | | <i>Indiana</i> | | |
| K9CUY | 580,644-254-764- | C-79 | W9BE | 89,655-139-215- | B-45 |
| WA9WBE | 66,000-100-220- | B-50 | K9TPF | 82,584-111-248- | B-47 |
| W9JQD | 64,802-111-194- | A-12 | K9CNC | 60,267-101-199- | C- |
| W9FN | 37,422-99-126- | C-30 | W9NHW | 43,575-83-175- | B-49 |
| K9LVK/9 | 36,738-78-157- | C-49 | W9EPG | 33,768-84-134- | A-36 |
| K9VQK | 20,085-65-103- | A-37 | W9IYP | 26,160-80-109- | C-13 |
| WA9UFO | 11,200-50-75- | A-30 | W9PAN | 25,380-60-141- | B-20 |
| | | | <i>Wisconsin</i> | | |
| W9EWC (W9AQW, opr.) | 1,100,256-313-1168-AC-85 | | W9DYA | 8077-41-66- | A-20 |
| W9GIL | 388,125-207-625- | C-65 | WA9PRT | 4929-31-53- | B-27 |
| W9KYZ | 293,322-186-526- | B- | W9FVN | 4278-31-46- | B-40 |
| W9BG | 258,888-184-471- | C-42 | WA9BMV | 75-5-5-ABC-19 | |
| W9EZ | 146,982-131-374-AC-51 | | W9AIH (6 ops.) | 1,309,620-299-1460-AC-90 | |
| W9LAX | 115,092-136-278- | C-35 | <i>North Dakota</i> | | |
| WA9NSR | 93,852-132-237- | B-30 | WA9ELO | 3210-30-37- | B- |
| W9NLI | 64,900-108-200- | C-15 | <i>South Dakota</i> | | |
| W9WEN | 45,684-81-188- | A-27 | WA9OML | 588-14-14- | C-55 |
| K9YBC | 42,897-79-181- | B-22 | W9WUU | 189-7-9- | B- |
| W9QW | 26,040-62-140- | C-17 | WA9CPY (WA9s CPX CPY) | 167,865-155-363- | C-94 |
| W9SDK | 13,224-58-78- | A-15 | DELTA DIVISION | | |
| K9EUZ | 93,201-39-53- | A-10 | <i>Arkansas</i> | | |
| WA9RTU | 2916-27-36- | A-13 | WA5RTG | 128,550-150-286- | C-55 |
| W9TXX | 3-1-1-B- | | W9BED | 35,478-81-146- | C-14 |
| W9YT (13 ops.) | 1,464,000-320-1525-AC- | | <i>Louisiana</i> | | |
| | | | W5IOU | 751,800-280-895- | C-73 |
| | | | W5WMU | 683,220-236-965- | C-88 |



If you've worked Asia, odds are you have QSOed one of the gang here at KA9MF. For the third consecutive year they have earned undisputed possession of Asia Continental Champion in the Multi-op phone category. The 175-foot tower pictured at the left of their QTH sports a TH6DX and a 2-element 40-meter beam.

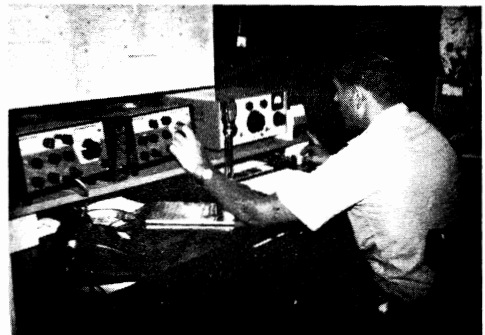
| | | | | | |
|---------------------|------------------|------|---------------------|---------------------|------|
| W6KC | 494,262-243-678- | C-55 | W8IPA | 307,296-194-528- | C-60 |
| W6BUK | 203,661-171-397- | C-64 | W8BQV | 225,765-173-435- | B-42 |
| W5QWY | 11,100-60-63- | C-30 | WA3BGE/8 | | |
| K5BLV | 6480-36-60- | A-23 | | 222,432-168-442- | C-38 |
| K5YPS (K5s SNI YPS) | | | W8BOJ | 117,888-128-307- | C-22 |
| | 570,015-239-795- | C-76 | W8KZO | 94,392-114-278- | C-60 |
| | | | W8BCIA | 93,888-96-326- | C-57 |
| | | | W8AJW | 88,578-111-266- | A- |
| | | | W8ATYF | 81,021-113-239- | C-17 |
| | | | W8YGR | 79,200-132-200- | B-16 |
| | | | W8LHW | 74,820-116-215- | B-41 |
| | | | W8GOC | 67,221-97-231- | A- |
| | | | W8MCR | 63,030-110-191-ABC- | 17 |
| | | | W8MJE | 59,592-104-191- | C-28 |
| | | | W8AQZ | 58,446-102-191- | B-36 |
| | | | W8GMX | 55,692-91-204- | B-51 |
| | | | W8RCN | 50,370-115-146- | A-31 |
| | | | W8YCP | 48,822-103-158- | C-10 |
| | | | K8NMG | 36,894-86-143- | B-20 |
| | | | W8GFH | 33,108-89-124- | C-9 |
| | | | K8BSM | 30,552-76-134- | C-18 |
| | | | WA8ZGC | 26,400-80-110- | C- |
| | | | W8NPF | 22,464-64-117- | C-21 |
| | | | W8DWP | 19,845-63-105-BC- | 22 |
| | | | W8BSR | 18,645-55-113- | A-39 |
| | | | WA8SCZ | 14,112-49-96-AC- | 15 |
| | | | W8GMC | 12,702-58-73- | B-21 |
| | | | W8ICF | 12,324-52-79- | B-20 |
| | | | W8DZG | 9234-38-81- | A-19 |
| | | | W8ELB | 8178-47-58- | A-40 |
| | | | W8EIE | 7920-45-60- | C-16 |
| | | | W8IRG | 5040-35-48- | B-19 |
| | | | W8CSK | 4452-28-53- | A-12 |
| | | | W8PCS | 3774-34-37- | B-5 |
| | | | WA8FCH | 3744-32-39- | A-6 |
| | | | K8GVK | 3612-28-43- | B-10 |
| | | | WA8SLL | 3510-30-39- | B-6 |
| | | | W8VZE | 1944-24-27- | A-4 |
| | | | W8BAPJ | 1632-16-34-AB- | 8 |
| | | | K8AMZ/8 | 864-16-18- | B-12 |
| | | | W8IDM | 816-16-17- | A-3 |
| | | | K8PYD | 75-5-5- | B-1 |
| | | | K8SJU (K8s SBZ SJU) | | |
| | | | | 207,192-176-388- | B-93 |

GREAT LAKES DIVISION

| | | | | | |
|------------------------------|---------------------|------|---------------------|----------------|------|
| | <i>Kentucky</i> | | | | |
| W4LW | 221,892-163-451- | C-46 | W8WEG | 7920-45-60- | C-16 |
| K4FU | 115,248-196-196- | A-35 | W8IRG | 5040-35-48- | B-19 |
| W4BCV | 19,656-63-104- | C-8 | W8CSK | 4452-28-53- | A-12 |
| K4KI | 15,309-63-81- | B-24 | W8PCS | 3774-34-37- | B-5 |
| WA4WWT | 13,446-64-83-AB- | 7 | WA8FCH | 3744-32-39- | A-6 |
| W4JKC | 192-8-8- | B- | K8GVK | 3612-28-43- | B-10 |
| | <i>Michigan</i> | | WA8SLL | 3510-30-39- | B-6 |
| K1ZND/8 | | | W8VZE | 1944-24-27- | A-4 |
| | 1,257,960-330-1272- | C-88 | W8BAPJ | 1632-16-34-AB- | 8 |
| W8UM (W82FIT, opr.) | | | K8AMZ/8 | 864-16-18- | B-12 |
| | 1,000,680-310-1076- | C- | W8IDM | 816-16-17- | A-3 |
| W8ROF | 499,854-227-734- | C-79 | K8PYD | 75-5-5- | B-1 |
| W8DA | 277,104-184-502-BC- | 52 | K8SJU (K8s SBZ SJU) | | |
| WA8ZDT | 152,955-135-378- | C-38 | | | |
| W8FLO | 143,616-136-352- | C-33 | | | |
| W8DQL | 135,360-141-320-AC- | 24 | | | |
| W8TJQ | 114,912-126-304- | A- | | | |
| WA8VVU | 92,856-106-292- | A-30 | | | |
| W8EW | 91,392-112-272-AC- | 28 | | | |
| W8VPC | 66,744-106-206- | C-16 | | | |
| W8WVU | 64,893-97-223- | A-34 | | | |
| W8RVU | 26,289-89-127- | C-20 | | | |
| W8JJA | 23,115-87-115- | C-10 | | | |
| WA8VRB | 18,207-87-107- | A-16 | | | |
| W8HXZ | 16,245-87-95- | B-26 | | | |
| WA8OSL | 14,628-83-92- | B-10 | | | |
| WA8GGN | 9776-47-70- | B-37 | | | |
| W8SS | 9522-46-69- | C-16 | | | |
| W8BSZG | 9270-38-55- | B-20 | | | |
| W8FI | 4851-33-49- | B-7 | | | |
| W8BCDG | 3570-34-35- | B-10 | | | |
| W8FEM | 2538-27-34- | B- | | | |
| WA8ZZZ | 2208-23-32- | 9 | | | |
| W8BAYH | 1953-21-31- | B-6 | | | |
| WA8WGM | 1863-23-27- | B-16 | | | |
| K8UDJ | 432-12-12- | C-4 | | | |
| K8BGZ | 390-10-13-AC- | 2 | | | |
| WA8ZJM | 243-9-9- | A-5 | | | |
| W8TWJ | 147-6-7- | B-2 | | | |
| W8BSO | 36-3-4- | A-7 | | | |
| WA8VZK | 27-3-3- | B-3 | | | |
| WA8LYF (K8HLR, WA8s GUF LYF) | | | | | |
| | 1,215,720-307-1320- | C-82 | | | |
| K8HKM (K8HKM, WA8LWK) | | | | | |
| | 351,000-200-585- | C-78 | | | |

HUDSON DIVISION

| | | | | | |
|----------------|-------------------------|--|----------------------|------|--|
| | <i>Eastern New York</i> | | | | |
| W2DXL | | | 1,176,852-303-1304- | C-84 | |
| WA20JD | | | 637,320-235-904- | C-62 | |
| W2HO | | | 559,251-231-807- | C-70 | |
| W8ZPW | | | 163,410-130-419- | A-35 | |
| W2AMM | | | 100,548-126-266- | C-20 | |
| W8BSH | | | 62,804-94-222- | B-33 | |
| WA2HAI | | | 23,664-69-116- | A- | |
| W8IHEM | | | 3348-31-36- | A-55 | |
| W2TIF | | | 3168-24-44- | C-9 | |
| W8IHF | | | 1188-18-22- | B-4 | |
| WA2ECF | | | 72-4-6- | B-1 | |
| K2MME (8 ops.) | | | 972,048-308-1052-BC- | 96 | |
| | <i>N. Y. C.-L. I.</i> | | | | |
| W2DCKS | | | 1,220,375-325-1260- | C-78 | |
| W2GGGE | | | 1,161,831-323-1205- | C-80 | |
| W2PCJ | | | 1,058,832-304-1189- | C-72 | |
| W2LXK | | | 524,832-336-522-BC- | 72 | |
| W2IRV | | | 358,200-199-600- | C-41 | |
| W2SUC | | | 354,105-215-549- | C-41 | |
| W2WZ | | | 342,495-215-531- | C-40 | |
| K2MFI | | | 233,784-153-514- | A-47 | |
| WB2UZU | | | 202,752-176-384- | C- | |
| W2YCW | | | 168,618-157-358- | C-40 | |
| W2MNN | | | 119,070-126-315- | C-40 | |
| W2MT | | | 111,804-121-308- | A-39 | |
| WB2YKU | | | 85,284-103-276-AB- | 25 | |
| W2AFM | | | 66,768-104-214-AB- | 39 | |
| W2CP | | | 34,020-84-135- | C-20 | |
| WA2EYW | | | 23,364-66-118- | B-30 | |
| W2HAE | | | 22,770-69-110- | B-13 | |
| W8IBX/2 | | | 15,582-53-98- | B- | |
| W2DLY | | | 15,486-58-89- | A-20 | |
| W2DUS | | | 11,232-48-78- | - | |
| WA2CXQ | | | 9855-45-73- | B-15 | |

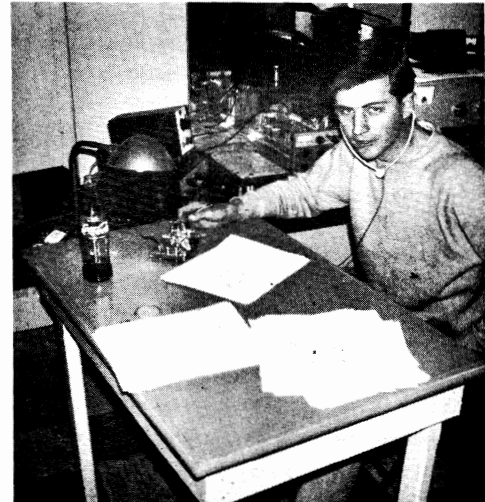


Taking the Number 2 spot in Louisiana section, W5TXN, amassed some 614 QSOs on phone for a score of 442K.

| | | | | | |
|-----------------|---------------------|------|-------------------------------|------------------|------|
| W2CKR | 4959-29-57- | B-9 | W2GLQ (5 ops.) | | |
| W2JB | 912-16-19- | A-3 | | 162,900-150-362- | C-84 |
| W2TUK | 495-11-15- | C-1 | WA2CGM (WA2s CGM HSN, WB2FEH) | | |
| WA2HBP | 273-7-13- | A-11 | | 40,290-79-170- | B-35 |
| WB2EXS | 135-5-9- | A-2 | | | |
| W2ZPG | 60-4-5- | A-3 | | | |
| WA2LQO (5 ops.) | | | | | |
| | 312,465-185-563-AC- | 74 | | | |

MIDWEST DIVISION

| | | | | | |
|--------|-----------------------------|------|--|--|--|
| | <i>Iowa</i> | | | | |
| WA8SDC | 605,340-285-708- | C-57 | | | |
| W8BX | 433,850-245-590- | C-62 | | | |
| W8EL | 177,705-165-359- | C-34 | | | |
| W8CQC | 177,504-172-344- | B-61 | | | |
| K8IR | 119,286-141-282- | C-56 | | | |
| WBBSY | 29,400-70-140- | C-22 | | | |
| WA8PKE | 2592-27-32- | B-12 | | | |
| | <i>Kansas</i> | | | | |
| W8WPL | 87,703-119-247- | B-72 | | | |
| | <i>Missouri</i> | | | | |
| WA8EMS | 652,032-256-853- | C-74 | | | |
| W8OAW | 642,095-265-811- | C-79 | | | |
| WA8RDJ | 35,700-85-140- | A- | | | |
| K8GYP | 22,500-75-100- | A-17 | | | |
| W8KVS | 19,296-67-96- | C-15 | | | |
| W8DSW | 11,454-46-83- | A-13 | | | |
| | <i>Nebraska</i> | | | | |
| W8HW | 12,096-42-96- | C-11 | | | |
| WA8GVJ | 1425-19-25- | A-4 | | | |
| | NEW ENGLAND DIVISION | | | | |
| | <i>Connecticut</i> | | | | |
| W1BIH | 921,888-288-1068- | C-59 | | | |
| WA1DJG | 698,190-255-918- | B-60 | | | |



South of the border, down Mexico way we find XEOGEN, Top Single-op c.w. entry for North America. Dale also takes 2nd place in the Top 10 DX c.w. operators listing. His three-element tri-band beam and dipoles put out a big signal from Agua Prieta.



JAIAEA, single-operator Asian Continental Champion on both c.w. and phone, shown at his operating position in Tokyo. Hajime sports an envious antenna farm with a 3.5 MHz. G/P, 2 elements on 7 MHz. and a 14 thru 28 MHz. cubical quad.

- WIARR*** 494,532-241-686-AB-48 **KH6IJ/1** 7965-45-59- A-10
WIETU* 413,253-219-629-BC-40 **K7JRE/1** 7668-36-71- A-15
K1VTM 375,210-198-632-BC-38 **WAIJKZ** 6588-36-61- B-12
WITS 373,302-223-558- B-40 **W1ESN** 4674-38-41- C-
W1CW* 274,170-130-709- C- **W1FJJ** 3813-31-41- C- 3
K1GUD 260,628-148-587- C-31 **W1PLJ** 3675-25-49- B-12
K1DPB 255,252-178-478- B-48 **W1UYU** 108- 6- 18- B- 2
WIECH 235,224-198-396-AB-28 **W1BB** 12- 2- -
K1UDD 224,048-176-425- A-33 **K1SLZ (K1s FHL SLZ)** 423,168-232-608-BC-85
W1AJO 197,001-159-413- B-34
W1AFJU 140,448-154-304- A-16
K1JHX 105,651-129-273- C-15
W1HRJ 99,750- 95-350- A-38
W1DIT 90,360-120-251- C-35
W1FBU* 85,680-119-240- C-28
W1CNU 77,283- 93-277- B-14
W1FTX 28,665- 91-105- A-12
W1AIED 14,310- 54- 89- A-12
W1YYM* 11,352- 44- 86- C-
W1TX 9954- 42- 79- B- 5
W1AHN 8379- 49- 57- A- 5
W1HSB 6633- 33- 67- B- 8
W1A1CQG 5338- 34- 53- A-17
W1LQ* 3906- 31- 42- -
W1A1QJ 918- 17- 18- A- 3
W1A1KQM/1* 918- 17- 18- B- 3
W1NJM* 540- 12- 15- C-
W1AHOL 162- 6- 9-AB- 1
W1BDI 108- 6- 6- A- 1
W1A9HHH/1* (W1AHOL, WB6 SAZ, WA9HHH) 44,010- 90-163- B-
W1AIGF (W1As GIX IGF) 8610- 41- 70- B- 8

Eastern Massachusetts **W1PEG** 34,048- 76-150- B-50
W1BPW 1,685,250-350-1607-AC-82
K1DIR 1,571,427-333-1573- C-79
W1AKX 1,569,189-359-1457- C-68
K1KTH/1 1,157,868-302-1278- C-77
W1AFHU 898,174-286-1113- C-87
W1WAI 763,689-277-921- C-68
W1AIRG/1 712,215-285-833-AC-72
W1EHT 166,044-137-404- B-36
W1MO 98,559-141-233- B-21
K1AGB 72,168- 97-248- A-38
W1CT 31,752- 84-126- C-20
W1AION 24,990- 85-100- A-15
W1EQY 21,960- 61-120- A-30
W1AIXL 17,385- 61- 95- B-17
W1BQL 17,280- 60- 96- B-18

Western Massachusetts **W1EZD** 290,460-188-515- C-51
K1BZM 30,129- 83-121- B-17
W1AFBX 9462- 38- 83- A-17
W1ABXQ 2691- 23- 39- A- 4
W1HRV 810- 15- 18- B- 5
W1YK (K1s THQ TK8, WAI-ABW) 1,038,588-284-1219-AC-96

NORTHWESTERN DIVISION
Idaho
W7DV 285,087-163-583- C-36

DJ4WN, operating 28 MHz. phone only, comments that he had real fun out of experiencing good conditions and raising a pile-up on that band.

- Montana** **W6JHV/7** 153,990-145-354- C-82
K7CTI 150,258-158-317-AC-35
W6BATY/7 5670- 30- 63- C-25

W6YL (7 oprs.)
W7YEX 75,525- 95-265-BC-45

Oregon
Washington
W7NP 216,300-140-516-AC-69
K7BSR 163,191-133-409- B-60
K7VPF 126,673-113-374- A-59
VE7ASP/W7 100,512- 96-349- A-46
WA7JCB 55,902- 77-242- B-38
W7DYQ 47,227- 83-190- B-55
W7IEU 27,690- 71-130- A-56
W7VRO 16,416- 48-114- C- 9
WA7GYR 8352- 32- 87- B-13
W7DFO 3300- 25- 44- A-22
W7SFA (7 oprs.) 1,583,205-299-1765-AC-96

PACIFIC DIVISION
East Bay
W6CNA 114,756-131-301- C-40
K6AHV 105,918-139-255- C-12
K6JB 103,635-105-329- C-48
K6AUC 70,965- 83-285- C-26
W6A1QM 10,137- 31-109- B- 8
W6IAM 2898- 23- 12- C- 9
W6EJA 540- 12- 15- C- 3
K6AN (K6s ALH AN, W6RGG) 1,133,294-298-1269- C-90

West Coast (DOD KG)
W6KG (W6s DOD KG) 428,076-188-759- C-36

Nevada
W7TVF 11,760- 49- 80- B-15
W7GVA 9828- 39- 84- C-13

Sacramento Valley
W6NKR 254,667-181-489- C-53
K6DR 240,524-157-512- -72
W6BIL 17,856- 64- 93-BC-51
K6TWE 8148- 28- 97- B-20

San Francisco
W6WB 270,270-182-495- C-
W6ERS 107,163-147-243-BC-50
WB6YMW 8778- 38- 77- B-22
K6BI 2448- 24- 34- B- 6
W6BIP (W6BIP, W6DJJ) 365,148-189-644- C-52

San Joaquin Valley
K6RKT 224,841-149-503- C-43
W6UZ 101,625-125-271- B- 3
W6KEV 14,175- 45-105- C-10
W6CLP 6816- 32- 71- B-18
W6MMH 5394- 29- 62- B- 15
W6BYH 450- 10- 15- -

Santa Clara Valley
W6ISQ 506,664-227-744- C-50
W6HOC 448,704-228-656- C-61
K6DC 253,092-161-524- C-36
W6ATO 118,989-113-351- C-68
K6ERT 92,065- 85-361- C-46
W6EBO 89,424-108-276- C-40
W6ZO 75,285-105-239- C-20
W6IXJ 73,188-144-214- C-25
W6KHS 68,880-112-205- C-26
W6EJ 57,000- 95-200-AC-
W6CLM 30,965- 55-189- C-45
W6ZHD 18,000- 60-120-AB-20
K6TZX 14,550- 60- 97- B-14
W6GBY 13,677- 47- 97- B-30
W6VK 13,209- 61- 89- C-14
K6AO 13,095- 45- 97- C-16
W6FYM 5814- 34- 57- A-16
W6CEO 5040- 30- 56- C-14
W6QDE 4743- 31- 51- C-10
W6AJDT 4350- 29- 50- A-11
W6PYS 198- 6- 11- A- 4

K4BVD/6 (5 oprs.) 1,882,539-327-1919- C-96

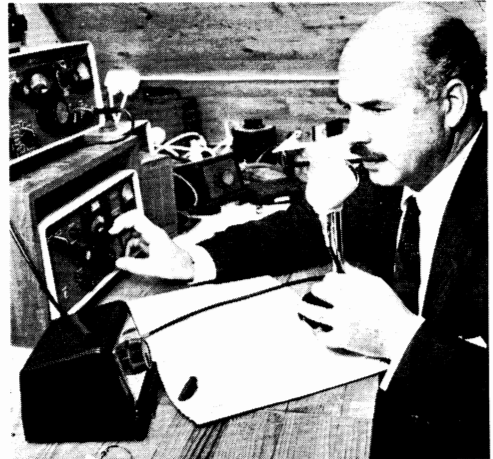
W6WX (5 oprs.) 1,531,989-289-1767- C-48

W6GFS (4 oprs.) 732,888-234-1044- C-96
W6JKJ* 79,296-112-236- C-25

- ROANOKE DIVISION**
North Carolina
W4PLL 387,090-230-564- C-45
W4TMR 242,649-117-497-AB-64
W4OMW 190,260-151-420- C-44
K4BBK/4 117,594-139-282-AC-22
K4CIA 90,072-108-278- C-22
W4BQY 31,262- 98-107- C-12
W4VON 20,022- 71- 96- C-16

South Carolina
K4II 860,559-301-953- C-37
WB4CPE 156,450-149-350- A-35
K6QPH/4 31,365- 85-123- C-15
K4AVU 4557- 31- 49- B- 5

Virginia
W4KFC1,521 108,348-1459-AC-68
W4HM 715,176-264-903- B-60
W4DM 522,576-228-764- C-56
W4UQ 366,201-243-503- C-60
W4EZ 281,050-175-542-AC-42
W4GF 278,740-181-514- C-33
WB4LEH 269,048-199-452- C-50
W4NH 258,516-172-501-BC-37
W4WBC 171,384-148-386- C-37
W4OPM 171,216-164-348- C-27
W4VC 170,655-155-367- C-53
W4W5F 168,516-151-372- C-31
W4XSD 138,281-143-323- C-18
W4DUQ 116,280-152-255- C-28



W4ZM 110,160-136-270- C-17
 K4PQL 108,108-143-252- A-27
 K4GSS 104,750-125-280- A-48
 K4CFB 97,071-131-247- C-37
 W4ZMH 96,660- 90-358- B-
 W4CQI 88,944-109-272- B-25
 K4PCL 85,874-109-262- C-32
 W4NQV 60,480-112-180-AB-29
 W4ZCY 39,078- 78-167- C-10
 W4PHL 38,880- 90-144- A-24
 W4NFM 27,521- 73-126- A-21
 W4KMS 27,258- 77-118-BC-19
 K4ORQ 23,760- 66-120- C-11
 W4IUO 13,260- 52- 85- C-13
 K4ZA 10,650- 50- 71- A- 9
 W4NXE 8550- 38- 75- B- 8
 W4LXJ 5940- 36- 55- B-12
 W4KXV 5040- 35- 48- C- 6
 W4SHJ 3744- 32- 39- C- 9
 WB4LXF 1950- 25- 26- A-10
 K4EJG 243- 9- 9- A- 7
 K6ZQB/4 18- 2- 3- B- 1
 W4BVV (7 oprs.)
 4,890,132-486-3354-AC-96
 K4CG (6 oprs.)
 1,738,053-399-1709- C-85

West Virginia

W8CDDV 75,900-110-230-AC-35
 WA8DOY 29,106- 77-126- A-39
 WA8VLM 13,260- 60- 74-BC-
 W8BJ 12,480- 60- 70- A-38

ROCKY MOUNTAIN DIVISION

Colorado

WA0GUH 221,616-152-486- A-75
 WA0CVS/Ø 93,198- 98-317- C-25
 W0JMB 6912- 36- 64- C-15

New Mexico

W5EU 498,128-191-874- C-62
 W5QNY 56,133- 99-189- B-35
 K5STL 34,680- 85-136- C-32
 WA5UAX 23,722- 58-138- C-46
 K5ELR 2775- 25- 37- B-36
 K5MAT 2772- 28- 33- A-10
 WA5ROU 450- 10- 15- A- 4
 W5QNQ 90- 5- 6- A- 4

Utah

W7HS 325,413-173-627-AC-67
 WA7KUW 180,018-146-411- C-26
 W7EZC 18,765- 45-139- A-20
 WA7ISO 15,238- 38-134- A-18

SOUTHEASTERN DIVISION

Alabama

W4GRG 474,117-211-749- C-60
 K4DY 86,873-109-269- C-44
 WB4HJN 18,513- 51-121- B-20
 WA4WED 7992- 36- 74- B-31
 W4FVY 7920- 40- 66- C- 7

| C.W. | | Phone | |
|-----------------|----------------|-----------------|----------------|
| Single Operator | Multipoperator | Single Operator | Multipoperator |
| W3GRF | W3MSK | W3MVB | W3MSK |
| W9EWC | W9YT | W9ZRX | W9EXE |
| WAØKDI | WØAIH | WØHP | KØVVY |
| W5IOU | K5YPS | W5IOU | W5WMU |
| K1ZND/8 | W8LYF | W8SH | WA8LYF |
| WØ2CKS | K2MME | W2DXL | WA2FQ/2 |
| WAØEMS | | KØDQI | WAØEMS |
| W1BPW | W1YK | W1AX | W1YK |
| W7DV | W7SFA | W7BJ | |
| W6ISQ | K4BVD/6 | K6AHV | K4BVD/6 |
| W4KFC | W4BVV | W6BVV | K4CG |
| W5EU | | W5EU | K7RAJ |
| W4LCP | W4ZXI | K4EZ | WA4QPL |
| W7IR | W6ANN | W6RR | W6ISA |
| W5WZQ | W5AC | W5KTR | W5AC |
| VE2YU | VE3ABN | VE3WQ | VE3FHO |

W4WSX 969- 17- 22- A- 7
 WB4EOW 672- 14- 16- A-16

Eastern Florida

W4LCP 1,212,534-318-1271- C-73
 K4THA 1,027,140-318-1079-ABC-90
 K4KQ 407,520-240-575- C-55
 W4HOS 359,640-216-555-BC-60
 W4ORT 292,842-187-522- A-73
 W4WHK 252,126-207-406-AB-64
 WBZYZ/4 210,904-164-430-BC-48
 W4FY 200,380-186-360- C-47
 W4BYB 153,408-188-272- C-
 WB4JSV 70,059-121-193-BC-40
 WB4IAE 56,610- 85-222- A-21
 WB4IGL 35,670- 82-145- B-30
 W4FFF 33,930- 78-145- C-11
 W4GHV 20,519- 71-103- B-25
 W4KMG 3441- 31- 37- A-12
 W4EEO 1152- 16- 24- A- 6
 W4ZXI (8 oprs.)
 2,754,956-398-2308- C-96

Georgia

W4DXI 473,223-233-679- C-70
 K4EZ 463,300-226-684- C-48
 WØRNL 114,972-134-286- A-53
 WB4EQQ 25,704- 56-153- A-30
 WB4HQA 4966- 26- 64- B-21
 WB4KVE 2346- 23- 34-AC-12
 WA4EPM 714- 14- 17- A- 5

SOUTHWESTERN DIVISION

Arizona

W7IR 1,057,179-323-1091- C-76

W7DI 660,920-260-848- C-85
 W7AAY 359,463-169-709- C-62
 W7KS 261,690-195-450- C-58
 W7UDG 19,908- 79- 84- A-13
 W7UOU 9447- 47- 67- A-17
 W7ISP 5406- 34- 53- B- 9
 W7HRE 4590- 34- 45- B-21
 W7KQL 1905- 15- 43- B-17
 W7FCD 1872- 13- 48- A- 3
 W7ISP/7 (WA7s IFD ISP)
 167,844-142-394- B-45

Los Angeles

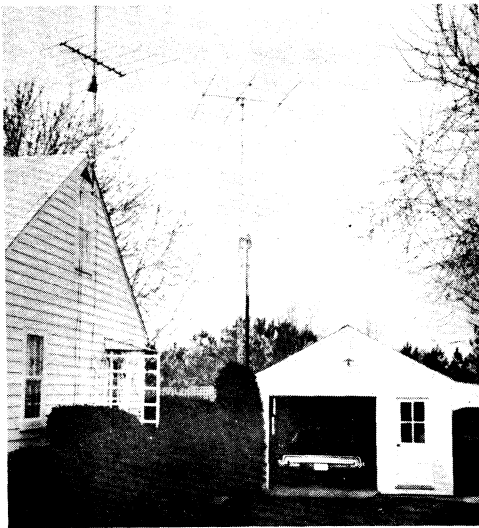
W6RR 1,056,632-269-1310- C-84
 K6NA 865,773-249-1160- C-
 W6TZD 547,548-206-886- C-
 W6DGH 445,170-209-710-AC-75
 W6EJJ 196,365-159-413- C-75
 K6YFZ 195,657-147-445- C-60
 W6RCV 139,440-112-415- C-50
 K6OC 116,802-126-313-BC-53
 WB6SKJ 114,885-115-333- C-58
 W6JKR 94,080-140-224- C-35
 K6MP 85,995-105-273- C-33
 K6OJ 85,374- 93-306- C-60
 K6BEP 80,460- 90-298- B-
 K6EV 74,420-122-204- C-24
 W6QY 53,768-103-174- C-14
 W6ONG 46,098- 78-197- A-42
 K6CNU 28,800- 75-128- A-24
 WA6DQG 26,394- 53-166- B-36
 OH3UQ/W6 21,168- 56-126- B-26
 W6CS 18,177- 73- 83-BC-12
 W6GTE 18,144- 48-126- C-25
 W6JPH 8964- 36- 83- B-
 W6BZHT 3240- 18- 60- A-34
 WB6SAZ 3120- 26- 40- B- 4
 WA6JAN 1785- 21- 29- A- 2
 W6ECM 60- 4- 5- B- 1
 W6NJU (5 oprs.)
 1,264,530-305-1382- C-90
 W6UED (W6s UED VPH)
 307,530-170-603- C-80
 WA6GLD (WA6s GLD ISP)
 111,804-154-242- C-
 K6EIV 652,470-239-910- C-
 K6CH 216,144-158-456- C-30
 WA7PHD/6
 121,023-113-357- A-54
 WA6FIT 11,088- 33-112- A-21
 WB6LMM 4498- 26- 58- B- 9
 K6OA 231- 7- 11- A- 4
 W6ANN (4 oprs.)
 1,596,744-331-1608- C-92
 K6UYC (6 oprs.)
 1,247,181-283-1469- C-90
 WB6NRK (WB6s MPE NRK
 UDC) 301,455-165-609- C-70

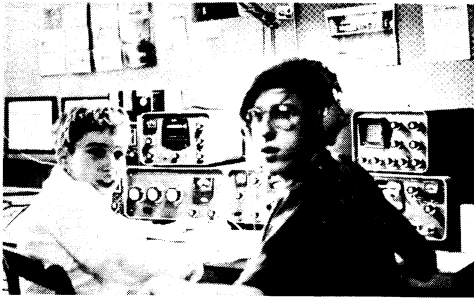
Orange

San Diego

K6HN 407,616-193-704- C-53
 WB6OLR 247,950-174-475-BC-55
 K6SDR 100,368-123-272- C-26
 W6CWW/6 96,570-111-290-AC-56
 W1IS/6 10,998- 39- 94- A-13
 WA6DMN 5580- 31- 60- B-13
 W6ITY (7 oprs.)
 1,473,771-299-1643-AC-

Representing the Maryland-D. C. section, Cliff, K3AHB had 332 QSOs from this attractive operating position. His Yagi is 53 feet above ground.

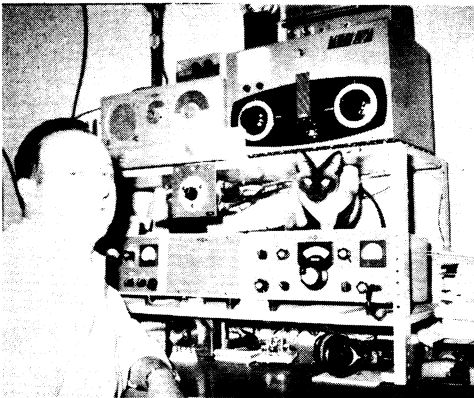




Representing our younger set, WA8WHN went multi-op for a fine score of 95K on phone. Randy, WA8SIL and Charley, WA8WHN lost 8 hours operating time due to a faulty coax relay.



Bob, VK2BRJ/9, on Norfolk Island provided a rare multiplier for 995 lucky W/VE c.w. entrants. His efforts are surely appreciated by the many who QSOed him.



First place in the Maine section goes to Phil, K1GAX, who says he didn't realize how many Extra Class licensees there were until the contest. Contrary to the picture, this was only a single-operator entry!

WB6TSJ (K3YVN, WB6KLL, WN6TNN)
17,670- 57-104-AC-76

Santa Barbara

W6GRX 100,584-127-264- C-48
W6GEB 37,818- 66-191- A-21
WB6WKC 2079- 21- 33- A- 6

WEST GULF DIVISION

Northern Texas

W6FL 574,200-264-725- C-45
W6EQT 467,856-216-737- C-82
K6ABV 384,462-234-548- A-76
W6TKB 332,850-181-613- C-56
K6YAA 247,776-178-464- A-43
W6ZSX 187,740-176-355-AC-40
W6EQ 150,258-168-317- B-55
WA5SSD 138,321-141-327- C-54
W6FCX 121,444-131-308- C-23
WA5VSL 108,945-135-269- C-38
W6KYD 108,324-108-339- C-33
WA5RXT 98,643-131-251-BC-25
W6OBS 91,176-116-282-AC-25
W6QZO 48,300-100-181-BC-18
W6IUW 48,030- 95-158- B-28
WA5UCT 22,032- 68-108-AC-24
W6QZG 1914- 22- 29-AB- 6
WA5PPZ 300-10- 10- C- 2
W6MSG 108- 6- 6- A- 3

Southern Texas

W5WZQ 1,061,424-336-1053- C-90
W5JAW 1,011,412-298-1132- C-61
W5GO 757,635-265-953- C-78
W5LJT 299,343-193-517- C-41
W5MCO 206,148-164-419- C-80
WA5AUZ 42,534-102-139-BC-14
WA5SRR 9348- 38- 82- C-15
WA5UHG 3666- 26- 47- A- 7
K2EUI/5 1173- 17- 23-AC- 2
W5AC (5 ops.) 461,016-228-674-AC-88
K5RLW (K5s LZJ RLW SOR) 205,800-175-392- C-85

CANADIAN DIVISION

Maritime

VO1HH 347,700-190-610- B-33
VE1AI 168,720-148-380- A-49
VE1WP 167,720-140-405- A-28
VO1AW 167,112-132-425- C-27
VE1EK 87,000-116-260- A-24
VE1AE 23,547- 47-167- A-

Quebec

VE2YU 618,966-251-822- C-68
VE2NV 600,525-255-785-AC-65
VE2WA 455,710-229-664-BC-63
VE2BV 301,020-174-578- B-60
VE2AYU 297,540-174-570-ABC-71
VE2AJ 182,214-159-382- B-29
VE2DCW 46,725- 89-175- A-12
VE2BGJ 19,140- 58-110- C-15
VE2DKJ 13,662- 46- 99- B- 9
VE2PJ 5940- 36- 55- A-21

Ontario

VE3DBB 176,154-157-374- B-60
VE3BMB 102,912-134-256- B-45
VE3FXZ 40,572- 84-162- A-40
VE3CWE 38,475- 95-135- B-20
VE3BWL 18,117- 61- 99-BC-15
VE3BS 17,360- 70- 83- C-10
VE3WW 12,690- 45- 94- B-12
VE3PGV 6194- 38- 55- A-14
VE3AIA 2484- 23- 36- A- 6
VE3AYR 1380- 20- 23- A-16
VE3ABN (VE3s ABN GUM, WA9VZS) 222,108-166-447-AB-80

Manitoba

VE4ZX 11,592- 42- 92- C-21
VE4JB (VE4s JB MF) 174,306-139-418- B-86

Saskatchewan

VE5PM 21,390- 62-115- B-5
VE5TT 3588- 26- 46- A-25

British Columbia

VE7EH 153,720-122-420- C-48
VE7IQ 26,560- 60-143- C-38
VE7BYG 2890- 20- 50- A- 8

Yukon - N. W. T.

VE8ZZ 25,950- 50-173- C-29

Check logs: W1IUY, W2s EGI HAZ, W3s IPS RFT, K4TRH/4, W4s FCJ JUK, K6BL, W6EYL, W8QG, K0BYC, VE3ATF, VE7-HQ.

C.W. SCORES

AFRICA

Angola

CR6EI 627,990-173-1210- A-6
CR6AI 186,645-115-541- B-

Canary Islands

EA8BK 110,952- 92-402- A-11
EA8EY 8910- 27-110- C- 3

Liberia

EL2Y 764,610-165-1547- B-50

Ethiopia

ET3USA (7 ops.) 1,105,146-179-2058- A-60

Ascension Island

ZD8Z 4,200,408-257-5704- A-87

Rhodesia

ZE1DC 348,480-110-1056- A-

South Africa

ZS6FN 254,100-140-605- A-14
ZS4AK 66,772- 63-348- A-11
ZS10 248- 8- 11- -50

Libya

5A4TY 18- 2- 3- B-

Tanganyika

5H3KJ 1,347,264-192-2456- A-58
5H3LV 323,592-139-776- A-42

Algeria

7X0RW 273- 7- 13- A-

Ghana

9G1HM 2100-14- 50- B- 2

Zambia

9J2MX 1,020,624-176-1933- A-56

ASIA

Iran

EP3AM 283,908-118-802- B-48
EP2BQ 140,058- 93-503- B-15

Korea

HL9KQ 271,512-108-838- B- 50

Japan

JA1AEA 1,357,224-194-2350- C-
JA3DGC 376,740-130-966- A-
JA2JAA 313,125-125-835- B-
JA3GZN 284,400-120-790- C-
JH1CBI 159,528- 92-578- A-29
JA1SR 137,865- 91-507- A-50
JA1LXE 94,720- 64-494- A-
JA3LGG 82,782- 73-378- A-22
JA7ARZ 70,432- 71-332-AB-19
JA2HO 60,000- 50-401- A-
JA2TH 44,289- 57-259- A-
JA1XGI 36,360- 45-271- A-25
JA6TQ 33,390- 53-210- A-23
JA2IH 32,634- 42-261- A-
JA6ED 32,396- 52-210- A-23
JA2WZ 32,240- 52-207- A-49
JH1AWI 29,300- 50-196- A-
JA2EMP 28,690- 38-255- A-13
JA2MVU 27,080- 40-227- A- 9
JA4S 25,254- 46-183- A-
JA1SKE 17,815- 35-170- A-
JA1WYQ 16,946- 37-153- A-48
JA8DIM 7722- 26- 99- A-
JA3YBQ (JA3LOK, opr.) 5200- 25- 70- B-
JA8GR 2346- 17- 46- A-
JA1AFF 1404- 13- 36- A-

TOP TEN

Single Operator

| C.W. | | D X | | Phone | | | |
|---------|-----------|-----------|-----------|-------|-----------|--------|-----------|
| W/VE | | | | W/VE | D X | | |
| W1BPW | 1,685,250 | ZD8Z | 4,200,408 | W6RR | 1,976,156 | KV4FZ | 5,927,589 |
| W4KFC | 1,521,108 | XEØGEN | 3,452,625 | W4BVV | 1,751,718 | HC1TH | 4,677,981 |
| W3GRF | 1,273,230 | KH6GPQ | 3,225,960 | W3MVB | 1,242,243 | ZD8Z | 4,116,735 |
| K1ZND/8 | 1,257,960 | PJ2VD | 2,703,393 | K6AHV | 1,239,672 | XE1WS | 3,754,974 |
| WB2CKS | 1,220,375 | HP1XHG | 2,553,999 | W8SH | 1,230,460 | KH6GPQ | 3,587,036 |
| W4LCP | 1,212,534 | HK3BAE | 2,405,187 | W1AX | 1,205,820 | H18XRM | 2,732,975 |
| W9EWC | 1,100,256 | K4PHY/YV5 | 1,660,422 | W9ZRX | 1,138,686 | KH6BZF | 2,431,395 |
| W5WZQ | 1,061,424 | DJ4ZR | 1,638,360 | W5KTR | 1,133,560 | HK3WO | 2,418,000 |
| W7IR | 1,057,179 | G2RO | 1,585,440 | W2DXL | 1,040,712 | XE1LLS | 2,336,605 |
| W5IOU | 751,800 | HB9UB | 1,581,930 | WØHP | 928,671 | VK2FU | 2,103,015 |

| | | | |
|------------------------------|--------------------|------------------|-----------------------|
| JA1BNW | 1332-12-37-C- | UAØKUA | 4209-23-62-B- |
| JA3HNV | 891-9-33-A-6 | UA9KUV | 4200-20-70-B- |
| JA6DGV | 450-6-25-A-4 | UAØKCS | 990-10-33-A- |
| JA1SMA | 240-5-16-A- | UWØBA | 456-8-19-A-2 |
| JAØDVA | 126-3-14-A-5 | UAØSE | 450-10-15-B- |
| JA2FVF | 27-1-9-A- | UAØHL | 75-5-5-A- |
| JA1RAW | 18-2-3-A- | UAØKFG (6 oprs.) | 1,100,280-173-2129-B- |
| JA1JHF | 3-1-1-A-1 | UAØKAE (3 oprs.) | 96,513-109-607-B- |
| JA9YAK (JA2FZL, JAØs ED FOJ) | 51,545-61-304-A-25 | UA9KAI (4 oprs.) | 88,920-52-570-A-26 |
| JA7YAF (5 oprs.) | 42,458-46-315-A-73 | UAØKZB (3 oprs.) | 22,995-35-219-B- |

Check log: JA1LWI.

Ryukyu Islands

| | |
|-------|---------------------|
| KR6EL | 167,992-92-609-B-C- |
| KR6NR | 56,547-61-309-C-15 |
| KR8AG | 14,454-33-146-A- |
| KR8DK | 2576-14-62-A- |
| KR6FT | 297-3-33-B-8 |

Check logs: UA9s DC KHL KJL TS, UV9XN, UAØs TP KCA KCW, UWØs AJ IW.

Lebanon

| | |
|-------|--------------------|
| OD5LX | 65,320-71-307-A-10 |
|-------|--------------------|

Asiatic Russian S.F.S.R.

| | |
|--------|---------------------|
| UAØKCO | 351,390-106-1105-B- |
| UA9KOA | 160,491-61-877-B- |
| UA9FP | 134,466-73-614-B- |
| UA9OS | 89,623-53-584-A- |
| UA9FN | 66,156-74-298-A- |
| UWØXC | 53,985-61-295-A- |
| UV9CO | 38,280-44-290-A- |
| UAØIW | 30,384-48-216-B- |
| UW9PJ | 24,024-44-182-A- |
| UA9FI | 22,496-38-199-A- |
| UWØTB | 20,706-29-238-A- |
| UA9OO | 16,761-37-151-A- |
| UAØTD | 14,670-30-163-A- |
| UA9BZ | 13,299-33-137-B-10 |
| UA9HV | 12,636-26-162-B- |
| UAØSA | 8400-25-112-A- |
| UA9JL | 6732-33-68-A- |
| UW9ER | 6111-21-97-A- |

Turkoman
UH8BO 684-12-19-B-

Uzbek

| | |
|-------|------------------|
| UI8AI | 14,214-46-103-A- |
| UI8IZ | 720-10-24-A- |
| UI8LL | 594-11-18-B- |

Tadzhik

| | |
|-------|------------------|
| UJ8AC | 17,640-40-147-B- |
| UJ8AB | 7830-30-87-B- |
| UJ8SX | 5796-28-69-A- |

Kazakh

| | |
|-------------------------|-------------------|
| UL7JG | 18,462-34-181-A- |
| UL7JE | 17,604-36-163-A- |
| UL7GP | 6804-28-81-B- |
| UL7JI | 1080-15-24-A- |
| UL7KBA | 150-5-10-A- |
| UL7HB | 60-4-5-A- |
| UL7KAA (UL7s AIG GI QH) | 139,635-87-547-B- |
| UL7KKB (3 oprs.) | 168-7-8-B- |

| | | | | |
|---------------------|-------------------|-----------|----------------------------|----------------------|
| UM8KAA | 9765-35-93-B- | Kirghiz | DM3PA | 8484-28-103-A- |
| | | India | DM3UDE | 8058-34-80-B- |
| VU2JN | 26,961-43-209-A- | Ceylon | DM2DEO | 5472-24-80-A- |
| 4S7DA | 4104-18-76-A-9 | Israel | DM6MAO | 4200-28-50-A- |
| | | Singapore | DM2AUD | 3825-25-51-A- |
| 4X4HT (4X4ZT, opr.) | 31,146-58-179-B- | | DM4SJJ | 2346-23-32-B- |
| 4Z4AG | 10,370-34-102-A-4 | | DM3JMI | 2112-22-32-A- |
| | | | DM2BCF | 1428-14-36-A- |
| | | | DM4HD | 1350-15-30-B- |
| | | | DM3UDM | 624-13-16-A- |
| | | | DM2ARE | 147-7-7-A- |
| | | | DM3TOO | 120-4-10-A- |
| | | | DL4SUN (DL4s DK SY, DL5GY) | 179,190-110-543-B-12 |

Check logs: DJ3 9RE ØTA, DL1RB DM2s BJD BOB BYO CCM CPL CUL, DM3s SBM TF, DM4s CF PKL ZWL and DM-EA-39Ø1/Ø

EUROPE

| | | | |
|-------|-----------------------|----------|----------------------------|
| CT1IQ | 570,507-147-1295-B-26 | Portugal | Spain |
| CT1MO | 179,546-107-563-A-30 | | EA2DT 260,372-119-730-A- |
| | | Azores | EA2HW 171,930-110-521-A-10 |
| | | | EA2HR 12,904-44-97-A-27 |
| CT2AT | 14,841-51-99-B-3 | | EA7LY 4836-26-63-A-8 |

Germany

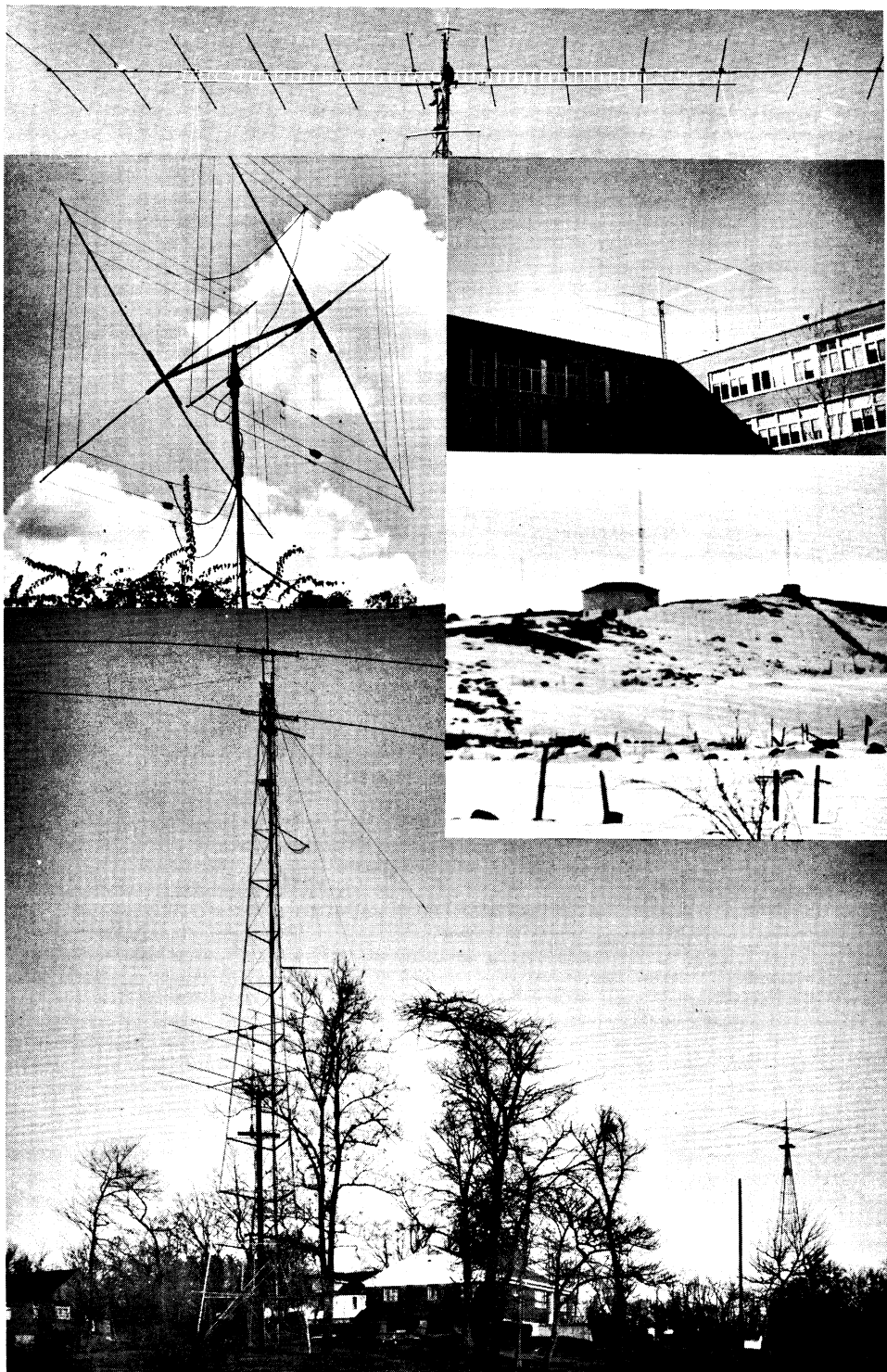
| | | | |
|--------|-----------------------|---------------------|------------------------------|
| DJ4ZR | 1,638,360-205-2664-B- | Republic of Ireland | |
| DL6WD1 | 016,532-187-1838-B- | EI9F | 885,610-194-1528-A-34 |
| DL4QQ | 980,700-175-1868-B-50 | EI5F | 15,370-29-177-A- |
| DK1CU | 623,448-168-1237-B- | | France |
| DM2AUO | 418,572-151-950-B- | F8VJ | 507,198-177-1125-A-48 |
| DL8CM | 274,536-124-753-A- | F8TQ | 495,126-173-954-A- |
| DL2JO | 230,115-115-667-C-33 | F8CS | 409,530-146-943-A-56 |
| DL4EP | 189,115-109-579-B-23 | F8FZ | 325,390-130-850-B-39 |
| DL4QP | 176,144-101-582-B-32 | F2PO | 197,208-132-499-A-35 |
| DJ4UF | 157,192-98-556-B- | FØLT | 77,760-80-324-A- |
| DL8YR | 134,724-103-436-B- | F8AH | 54,696-53-344-A-36 |
| DM3XI | 114,680-94-410-A- | FØQE | 38,136-56-227-A- |
| DJ5GG | 78,120-70-372-B- | FØBB | 15,600-50-104-A-15 |
| DL7NS | 45,504-64-234-A- | F8TM | 13,803-43-107-A- |
| DJ6SI | 43,026-71-204-A- | F8UJ | 1680-20-28-A-10 |
| DJ2YE | 35,840-64-187-B- | F8CT | 304-8-13- |
| DK2RZ | 29,964-44-227-A- | | Check log: F2SQ. |
| DM3LOG | 14,616-42-117-A- | | England |
| DLØYC | 14,548-60-148-B- | | G2RO 1,585,440-216-2452-A-70 |
| DL7BQ | 11,430-18-213-B- | | |
| DLØEM | 6225-25-83-B- | | |



ZD8Z, 1969 Africa Continental Champion on both c.w. and phone, shown riding what appears to be one of Ascension Islands local inhabitants. Do you think this could become a new fad? Bill is also the number 1 single-op DX station on a c.w. with a score of over 4.2 million.



KV4FZ shown relaxing after a rigorous contest weekend. Herb takes honors as North American Continental Champion and number 1 single-op DX station, both on phone. What a score, over 5.9 million!



Behind each good operator there is an efficient antenna system, here's just a sampling; K4SKI's 12 el 15 mtr. beam; 9V1PD's 2-el. tri-band quad; W9YT's 5 el. 20 mtr. Yagi; W8DZ antenna farm consisting of 2 el on 7, 4 on 14, 4 on 21, 5 on 28 and an inverted vee on 3.5 MHz; and LAØAD's TH3 and Hy-Tower.

G3FXB 1,306,032-208-2093- A-80
 G3TXF 716,552-172-1392- A-81
 G2QT 620,550-175-1182- A-52
 G3KMA 517,362-163-1058- A-
 G3JYP 453,333-137-1113- A-
 G3ESF 445,809-161-923- A-
 G3APN 211,629-121-583- A-40
 G6VC 136,476-102-446- A-
 G3WP 8556- 31- 92- A-

Check log: G3XNG.

Guernsey

GC3IEW 1,578,060-220-2391- A-
 Scotland
 GM2HCZ 177,905-119-500- A-

Wales

GW3NJV 660,756-164-1343- A-
 GW3JI 399,996-164-813- A-80
 GW3ITZ (6 ops.)
 659,149-167-1330- A-96

Hungary

HA8UD 395,712-144-916- B-
 HA3GF 227,416-131-579- A-
 HA8KUN 43,214- 62-234- B-
 HA8UF 39,375- 75-175- A-
 HA8KUX 20,970- 30-233- A-
 HA2ME 3420- 20- 57- A-
 HA8UU 2967- 23- 53- A-
 HA8UC 936- 12- 26- A-
 HA7LO 880- 10- 30- A-
 HA9KPE 780- 10- 26- A-
 HA1KZB 459- 9- 19- A-
 HA3NB 189- 7- 9- A-
 HA5EQ 135- 5- 9- A-
 HA5KQ (5 ops.)
 910,080-180-1688- B-
 HA5KPF (3 ops.)
 198,688-112-603- B-80
 HA8KCP (3 ops.)
 69,984- 72-325- A-
 HA8KCC (2 ops.)
 57,456- 72-267- A-
 HA3KNA (4 ops.)
 56,232- 66-284- B-
 HA9KOL (4 ops.)
 27,594- 54-171- A-31
 HA8KVC (Multi-op.)
 144- 6- 8- A-

Check logs: HA5 1VA 8VM.

Switzerland

HB9UB 1,581,930-210-2511- B-
 HB9AGH 454,896-156-1015- B-37
 HB9DX 332,775-145-765- B-
 HB9KC 221,145-115-641- B-33
 HB9AGK 132,165- 99-445- A-27

Italy

I1ASE 811,903-163-1663- B-61
 I1BLF 269,591-133-676- A-
 I1ZGA 12,285- 45- 91- A-

Jan Mayen

JX5CI (JXs 2BH, 5CI)
 25,461- 41-208- A- 8

Norway

LA6AD 1,504,485-201-2495- A-68
 LA1OA 227,355-115-659- B-
 LA3Q 72,808- 76-320- A-26
 LA5GF 2750- 22- 42- A-
 LA1P 1800- 15- 40- A- 4
 LA6CJ 72- 4- 6- A- 1

Check logs: LA4JL, LA9s JD OI.

Luxembourg

DJ6SI/LX 82,524- 92-302- A-

Bulgaria

LZ1SS 51,084- 54-322- B-
 LZ1ZQ 9- 1- 3- A-
 LZ1KPG (3 ops.)
 1,180,581-193-2039- C-96
 LZ1KAA (3 ops.)
 430,560-138-1040- B-73

Check log: LZ2KPD.

Austria

OE1DEW 306- 6- 17- A- 2

DX CONTINENTAL CHAMPIONS

C.W.

Phone

| Single Operator | Multioperator | | Single Operator | Multioperator |
|-----------------|---------------|------------|-----------------|---------------|
| ZD8Z | ET3USA | Africa | ZD8Z | ET3USA |
| JA1AEA | UA6KFG | Asia | JA1AEA | KA9MF |
| DJ4ZR | SK6AB | Europe | I1BAF | SK6AB |
| XEØGEN | | N. America | KV4FZ | 6YØA |
| KH6GPQ | VK3APN | Oceania | KH6GPQ | |
| HK3BAE | LU2DKG | S. America | HC1TH | |

(Single-operator continental DX champions win the plaque)

Finland
 OH8RC 552,981-143-1289- B-
 OH5VT 374,262-134-931- B-
 OH5AD 89,052- 82-352- B-
 OH2BAH 44,064- 54-272- B-
 OH4RH 23,940- 37-140- B-
 OH3MK 14,040- 40-117- B-
 OH5WH 12,600- 30-140- A-17
 OH5RZ 8190- 42- 65- B-
 OH2BCD 4071- 23- 59- A-
 OH1PG 1350- 15- 30- B-
 OH7RM 1232- 16- 26- A-
 OH2VZ 576- 8- 24- A- 1
 OH8VR 105- 5- 7- A-
 OH1UR 45- 3- 5- B- 1
 OH1AD (6 ops.)
 727,910-166-1500- B-
 OH2BFJ (OH2s BFJ LT)
 64,320- 80-275- B-
 OH3AG (OH3s SA YU)
 6216- 28- 76-AB-

Check logs: OHs 50D 6RC.

Czechoslovakia

OK1ARN 434,427-137-1059- B-
 OK1AOR 225,000-125-639- B-
 OK2QX 214,185-131-545-AB-
 OK1AOX 112,995- 45-852- A-
 OK1KTL 93,010- 71-450- B-
 OK1KYS 85,956- 87-330- A-
 OK2PAE 81,000- 75-361- A-
 OK4CPG/P 77,544- 72-359- B-
 OK1ATX 60,341- 83-248- A-
 OK1NB 46,032- 48-321- A-
 OK1TA 36,363- 69-179- A-
 OK2WDC 19,008- 48-139- A-
 OK3KGI 11,600- 25-155- A-
 OK2PAY 9933- 43- 77- A-
 OK1STU 5229- 21-249- A-
 OK1OO 3648- 16- 76- B-
 OK3ZMW 3610- 19- 64- A-
 OK2BCJ 3330- 18- 69- B-
 OK1AQO 3111- 17- 65- A-
 OK1EP 2184- 14- 52- A-
 OK1NW 2100- 14- 51- B-
 OK2DB 1935- 15- 43- A-
 OK1AES 1890- 14- 45- B-
 OK1AIA 1392- 16- 29- A-
 OK3CGI 714- 14- 17- A-
 OK2ZU 610- 10- 20- A-
 OK3CEX 516- 12- 15- A-
 OK2BPE 432- 6- 24- A-
 OK2YL 357- 7- 17- A-
 OK1CIJ 301- 7- 16- A-
 OK1BBJ 3- 1- 1- B-
 OK3KAP (Multi-op.)
 25,431- 49-173- A-

Check logs: OK2s BFT SFS, OK3-TAH.

Belgium

ON4XG 809,550-175-1542- A-44
 ON4EG 7260- 30- 82- A-

Denmark

OZ1LO '1,410,417-201-2339- B-85
 OZ7BG 482,332-148-1087- B-
 OZ7X 412,290-135-1018- A-
 OZ3F 104,686- 91-519- A-30
 OZ5DX 104,040- 85-408- B-
 OZ3PO 100,674- 94-362- A-
 OZ4H 51,504- 74-232- A-
 OZ7G 37,323- 39-319- A-
 OZ5WQ 27,300- 52-175- A-
 OZ2UA 17,370- 30-194- A-
 QZ7BQ 7560- 24-105- B-

OZ2NU 3750- 25- 50- A-7

Check logs: OZs 2LW 7ON.

Netherlands

PAØLOU 1,153,600-200-1963- A-60
 PAØKOR 38,688- 52-248- A- 5
 PAØWAC 29,899- 41-243- A-14
 PAØPHK 6231- 31- 67- A-
 PAØUV 4698- 27- 58- A-

Sweden

SM6DHU 207,594-114-607- B-
 SM5CAK 188,490-103-610- B-
 SM6BZE 155,628- 99-524- A-27
 SM5BXT 143,514-102-469- B-
 SM5UU 113,313-107-353- B-66
 SMØBDS 85,656- 86-343-AB-
 SM6ARH 66,787- 47-483- B-
 SM5BNX 51,354- 54-317- B-
 SM6CJ 28,764- 68-141- B-
 SM3EVB 28,320- 59-160- A-
 SM3ARE 21,780- 55-132- B-29
 SM5XX 17,952- 44-136- A-20
 SMØYF 17,640- 35-168- A-12
 SM5EXE 17,040- 40-142- A- 5
 SM2COL 15,700- 60-105- B-
 SM3BUS 13,930- 35-133- B-10
 SM6ESI 13,504- 32-141- A-
 SM4DPB 11,745- 29-135- B-
 SM5BRS 10,989- 37- 99- A-
 SM5APS 10,560- 33-107- A-
 SM3CJD 9384- 34- 92- A-
 SM5BNZ 3657- 23- 53- A-
 SM5CFH 3477- 19- 61- B-
 SM7BBV 2394- 21- 38- B-
 SMØEIH 1080- 15- 24- B-
 SM5UH 540- 10- 18- A-
 SM7CMV 352- 8- 15- A-
 SK6AB (6 ops.)
 2,228,343-221-3569- B-
 SK6CF (7 ops.)
 1,513,998-207-2438- B-90
 SK5AA (SM5s ACQ CMC)
 191,748-116-551- B-22

Check logs: SMS 2COR 5BDY
 5BFJ 5BXP 6BSM 7DMT 7TV
 ØGM.

Poland

SP9AI 166,816-104-550- B-
 SP6BZ 156,630-115-468- A-
 SP3AIJ 140,277-107-437- A-
 SP8AQ 139,842-102-461- A-53
 SP6BCA 26,712- 53-168- A-
 SP8AFS 17,787- 49-121- B-
 SP6BAA 13,572- 39-116- B-
 SP6AXF 13,489- 41-112- A-
 SP3KBW 12,573- 33-137- A-
 SP9BQX 12,510- 45- 93- A-
 SP2AUB 10,152- 24-141- B-
 SP1CNW 8928- 32- 93- A-
 SP5ATO 8316- 36- 77- A-
 SP6BFK 6930- 30- 77- A-
 SP5ZA 5957- 23- 87- A-
 SP2PI 3900- 20- 65- A- 3
 SP9AGS 2363- 17- 48- A- 1
 SP9ABE 2340- 15- 52- A-
 SP5ATO 2205- 15- 49- A-
 SP4DCR 108- 6- 6- A-
 SP7CKF 54- 3- 6- A-

Check logs: SPs 1CTN 2RW 4AVG
 6CDP 8BXT.

Greece

SVØWP 700,336-148-1606- C-33

Iceland

TF30J 10,890- 33-110- A-12

European Russian S.F.S.R.

UA1ZL 157,950- 90-585- A-
 UA1IA 91,800- 51-600- B-
 UW3KBI 60,300- 67-300- B-
 UW3CM 52,341- 73-239- B-
 UA4SM 47,328- 59-272- A-
 UV3TA 44,928- 52-288- A-
 UA4KHW 28,800- 64-150- B-11
 UA1TQ 21,240- 40-177- B-
 UW3HV 21,204- 38-206- B-
 UW1KAT 17,556- 38-154- A-
 UA3DB 17,250- 50-115- B-
 UA1AJ 17,220- 41-140- A-
 UA4QK 14,784- 32-154- A-
 UA1DF 14,523- 47-103- A-
 UW6CY 10,920- 35-108- A-
 UA3TA 9030- 35- 86- B-
 UW3NE 7655- 35- 73- B-
 UA1OE 7392- 32- 77- A-
 UA3UH 6885- 27- 85- A-
 UW3FW 6804- 27- 84- B-
 UA4QM 6549- 37- 59- B-
 UW3HY 4052- 21- 64- B-
 UA1YH 3366- 22- 51- A-
 UA6UO 2964- 19- 54- A-
 UA3MV 2520- 21- 40- A-
 UA3YR 720- 10- 24- A-
 UA3KAO (4 ops.)
 482,313-149-1080- B-56
 UA1KAG (3 ops.)
 68,228- 74-313- B-
 UA3KAG (3 ops.)
 60,864- 64-317- B-
 UA1KAQ (2 ops.)
 23,517- 39-201- A-
 UA4KHP (3 ops.)
 10,296- 33-104- A-
 UA4KHA (3 ops.)
 7446- 34- 73- B-

Check logs: UA1s TL ZZ, UA3s FT
 OL KRO, UA4LK, UA6KOD
 UN1s CQ KAL, UW4IK.

Ukraine

UB5MZ 186,048- 96-662- A-
 UB5KAB 11,124- 36-103- B-
 UT5XB 6390- 30- 71- A-
 UY5YU 3900- 22- 50- A-
 UY5U 2775- 25- 37- A-
 UY5TU 2580- 20- 43- A-
 UY5TB 690- 10- 23- A-
 UY5AB 18- 2- 3- A-
 UT5KDP (3 ops.)
 186,624- 81-768- A-
 UB5KFF (3 ops.)
 81,852- 76-359- B-

Check logs: UB5s ES NS KKO.

White Russian S.S.R.

UC2BB 45- 3- 5- A-

Azerbaijan

UD6BW 2940- 20- 49- B-

Georgia

UF6AU 57,408- 52-368- A-
 UF6HS 5376- 28- 65-AB-

Lithuania

Lt150 21,520- 40-182- B-
 UP2CG 17,028- 44-129- B-
 UP2KBA 14,715- 45-109- B-
 UP2KCB 10,914- 34-107- B-
 UP2OX 6216- 28- 74- A-

Bold Face = Over 300 QSOs/Band — DX

| | 80 | 40 | 20 | 15 | 10 | | 80 | 40 | 20 | 15 | 10 |
|---------|-----|-----|-------------|-------------|------|------------|-----|-----|------|------|------|
| CR6GA | | | 1078 | 1106 | 812 | OZ1LO | 35 | 135 | 328 | 834 | 919 |
| CR6GM | | 3 | 913 | 553 | 824 | OZ1RH | 11 | 17 | 347 | 419 | 876 |
| CR7DS | | | 474 | 470 | 550 | OZ7X | | 14 | 362 | 744 | 340 |
| EL2BD | 2 | 153 | 498 | 647 | 619 | PK3BP* | | 27 | 236 | 527 | 370 |
| ET3USA* | 4 | 29 | 566 | 275 | 292 | SK6AB* | 50 | 266 | 1489 | 1373 | 1161 |
| ZD8Z | 131 | 432 | 1801 | 1839 | 1617 | SM5CAK | | 67 | 24 | 184 | 364 |
| ZS8S | | | 165 | 328 | 523 | SM5EAC | 40 | 17 | 549 | 803 | 768 |
| ZS6ACK | | | 52 | 192 | 662 | SM6CKU | 23 | 68 | 560 | 653 | 425 |
| ZS6DW | 12 | 97 | 471 | 1115 | 1339 | UA1CS | | | 324 | | |
| 5H3KJ | | | 496 | 788 | 1065 | UA1WW | | | 1 | 362 | 51 |
| 7P8AR | | 96 | 844 | 964 | 1110 | UA2KBD* | 20 | 40 | 229 | 525 | 1 |
| 7Z3AB | | | 472 | 32 | 12 | UT5KTH | | | 333 | | |
| | | | | | | UW3BV | | | 382 | | |
| EP2BQ | | 8 | 376 | 129 | 213 | YU1BCD* | 5 | 110 | 656 | 987 | 253 |
| EP3AM | 2 | 21 | 821 | 401 | 296 | YU3EY* | | 15 | 1005 | 919 | 136 |
| JA1AEA | 11 | 148 | 651 | 607 | 1178 | | | | | | |
| JA1CG | | | 43 | 404 | 292 | FG7XL | | | 1152 | 1131 | 1483 |
| JA1DXE | 1 | 16 | 197 | 372 | 362 | H18XRM | 172 | 355 | 1023 | 1108 | 1064 |
| JA3LGG | | | 12 | 66 | 227 | HPIJC | 280 | 195 | 443 | 647 | 577 |
| JA7FGA | | | | | 68 | KL7WAH | | 55 | 368 | 785 | 237 |
| KA2RM | 60 | 149 | 542 | 692 | 746 | K4KLC/KL7 | | | 219 | 584 | |
| KA7CW* | | | 58 | 222 | 459 | KP4AN | 75 | 81 | 49 | 111 | 405 |
| KA9MF* | | | 84 | 814 | 477 | KV4FZ | 391 | 768 | 2078 | 2125 | 2159 |
| UA9KAI* | | | 1204 | | | KZ5NF | | | 161 | 1160 | 1092 |
| 4Z4HF | | | 311 | 158 | | PJ7JC | 203 | 123 | 674 | 364 | 624 |
| | | | | | | VP9MI | | | 1 | 330 | 676 |
| CT1BH | 14 | 119 | 769 | 524 | 1131 | VE3BS/VP9 | 56 | 31 | 342 | 460 | 453 |
| CT2AT | 177 | 213 | 337 | 169 | 1122 | WB2NCS/VP9 | | | 428 | 2 | |
| DJ5GI | | | 451 | 812 | 512 | KE1LLS | 78 | 409 | 743 | 1178 | 910 |
| DL2JO | | | 24 | 191 | 427 | KE1WS | 168 | 661 | 943 | 885 | 1962 |
| DL4AP | 2 | 36 | 530 | 938 | 554 | YN1GLB | 254 | | 850 | 560 | 1156 |
| DL4FS* | | | 432 | 822 | 525 | Y8A* | 442 | 553 | 1241 | 1311 | 2034 |
| DL4QP | | | 105 | 368 | 537 | Y4KK | | 16 | 113 | 272 | 363 |
| DL4QQ | 20 | 179 | 659 | 897 | 886 | | | | | | |
| DL4USN* | 3 | 54 | 835 | 1007 | 785 | DUIZAG | | 45 | 410 | 381 | 447 |
| DL6WE | | | | | 628 | KH6BZF | 30 | 183 | 599 | 1539 | 1454 |
| DL7LJ | | | | | 675 | KH6FPQ | 185 | 362 | 981 | 1249 | 1949 |
| EA1FD | 17 | 57 | 362 | 537 | 675 | KX6FJ | | | 642 | 547 | 778 |
| EA1IY | | | 394 | | 638 | KX6GS | | | 360 | 348 | 690 |
| EA3QW | 2 | 35 | 201 | 222 | 476 | YK2FU | 60 | 429 | 1079 | 495 | 920 |
| F3KW | 39 | 75 | 738 | 897 | 823 | ZL1AGO | 54 | 233 | 305 | 325 | 215 |
| F6OJ* | 43 | 116 | 646 | 1029 | 644 | ZL1HW | | | 546 | 350 | 726 |
| G2QT | 55 | 102 | 554 | 648 | 638 | 5W1AR | 31 | 183 | 373 | 13 | 246 |
| G3LAR | 17 | 156 | 602 | 466 | 1055 | | | | | | |
| G8JOC* | 47 | 327 | 1389 | 1474 | 818 | CP1HW | | 1 | 511 | 991 | 1095 |
| G8KMA | | | 157 | 121 | 554 | CX2CN | | | 21 | 221 | 514 |
| G8UQR | | | | | 1205 | HK3WO | 62 | 275 | 738 | 727 | 1422 |
| G8WTV | 2 | 27 | 288 | 368 | 728 | LU2FAO | | | 376 | | |
| G8XYP | | | 27 | 328 | 108 | LU6EAR | | | 315 | | |
| GW3NWW | 22 | 76 | 456 | 348 | 1339 | LU8DKA | | 53 | 373 | 938 | 1809 |
| I1BAF | 36 | 160 | 1425 | 925 | 463 | OA4BS | | | 335 | | |
| I1BBZ | | | 139 | 353 | 70 | OA4YW | | | 131 | 222 | 379 |
| I1BH | | | | | | OA6BU | 2 | 72 | 388 | 442 | 771 |
| I1CZW* | 14 | 164 | 1091 | 439 | 741 | PY1CHP | | | 58 | 313 | 114 |
| I1DFE | | | 104 | 332 | 263 | PY4KL | | | 392 | 457 | 668 |
| I1FLD | 14 | 88 | 950 | 604 | 1000 | PY7ASQ | | 28 | 1047 | 789 | 26 |
| I1MOL | 12 | 118 | 643 | 522 | 531 | PY7VKZ | | 80 | 325 | 413 | 712 |
| I1TAE* | 28 | 332 | 1396 | 1195 | 1438 | PZ1CK | | | 712 | 715 | |
| JX3P* | | | 445 | 174 | 4 | YV5CGT/3 | 29 | 82 | 604 | 520 | 423 |
| LA6AD | 48 | 93 | 692 | 600 | 962 | YV7AV | | | 787 | 718 | 562 |
| OE2EGL | | | 336 | 764 | 908 | WA3HXR/YV5 | 34 | 207 | 546 | 623 | 855 |
| OH9NI | 2 | 3 | 225 | 310 | 268 | 8R1G | 153 | 129 | 710 | 651 | 697 |
| ON4XG | | | 1 | 191 | 393 | | | | | | |
| ON5GQ | | | 19 | 461 | 543 | | | | | | |

* Multioperator station.

| | | | |
|--------|--------------------|-------------------------|---------------------------|
| UP2BL | 63-3-7-A | Y08FZ | 19,656-36-182-A |
| UP2KMU | (4 oprs.) | Y06AW | 12,675-25-169-B |
| | 59,220-47-420-A | Y09AFJ | 9450-30-105-A |
| UP2KAG | (2 oprs.) | Y07DL | 7355-15-163-B |
| | 382-14-21-A | Y08AEZ | 3024-24-42-A |
| | | Y04KCE | 2280-20-38-B |
| | | Y06CZ | 1488-18-31-A |
| | | Y09HO | 588-7-28-A |
| | | Y04YT | 294-7-14-A |
| | | Y04KCA | (Y04s AIP HW) 480-8-20-A |
| UQ2KCN | (UQ2AO, opr.) | Check logs: Y03s AC QO. | |
| | 56,700-63-302-AB | Yugoslavia | |
| UQ2PZ | 11,526-34-113-A | YU2REB | 278,575-115-802-B |
| UQ2CC | 7332-26-94-B | YU1SF | 32,984-62-178-A-55 |
| UQ2KAY | 324-9-13-B | YU1BCD | (YU1s HQW QBC, YU3BU) |
| UQ2KCT | (2 oprs.) | | 1,100,010-185-2146-B-67 |
| | 444,717-117-1267-B | YU3DUV | (2 oprs.) 39,246-62-212-A |
| UQ2KCR | (UQ2s PP PW) | NORTH AMERICA | |
| | 72,996-79-308-B | Cuba | |
| UQ2KBC | (2 oprs.) | CO2DR | 87,120-88-330-A-14 |
| | 26,850-50-181-A | CO2KW | 8424-26-108-A |
| | | Estonia | |
| UR2LO | 53,048-38-467-B | | |
| UR2FU | 13,284-41-108-A | | |
| | | Rumania | |
| Y08AP | 86,997-47-617-A | | |
| Y08MH | 26,235-55-180-A | | |
| Y04CT | 24,450-50-183-A | | |
| Y08DD | 20,350-50-136-C | | |

| | | | |
|--------------------------------------|-------------------------|-----------------------|--------------------------|
| <i>St. Pierre & Miquelon Is.</i> | | <i>Bahama Islands</i> | |
| FP8AP | 109,026-54-673-A | VP7NA | 501,960-178-940-B-31 |
| <i>Panama</i> | | | |
| <i>Bermuda Islands</i> | | <i>Mexico</i> | |
| HP1XHG | 2,553,999-259-3287-C-69 | VP9BY | 12,488-28-149-A-8 |
| <i>Alaska</i> | | | |
| KL7IR | 1,566,840-220-2374-C-53 | XE9GEN | 3,452,625-275-4185-AC-85 |
| W3UEQ/KL7 | 154,938-98-527-C-19 | XE2AAG | 1,476,279-219-2250-A |
| | | XE9GJR | 869,652-196-1479-A |
| <i>Virgin Islands</i> | | | |
| KV4GA | 46,980-60-262-A-14 | <i>Barbados</i> | |
| <i>Canal Zone</i> | | 8P6CV | 756-12-21-A-2 |
| KZ5KN | 14,400-30-160-A-6 | <i>Trinidad</i> | |
| <i>Netherland Antilles</i> | | 9Y4KK | 699,180-172-1355-B-24 |
| PJ2VD | 2,703,393-249-3819-A-64 | 9Y4DS | 341,820-108-1055-B-48 |
| <i>Sint Maarten</i> | | | |
| PJ8AA | 573,363-171-1117-A-33 | OCEANIA | |
| <i>Philippine Islands</i> | | | |
| <i>Dominica</i> | | DX1AAV | 409,833-129-1059-C-70 |
| VP2DAP | 57,470-70-275-A-5 | DUIZAW | 129,720-94-481-C-18 |



| | | | |
|----------|-----------------|---------|--------------------------|
| WA2ADU | 120- 5- 8- B- 2 | Indiana | |
| WA2BEX/2 | 105- 5- 7- A- 1 | W9ZRXX | |
| WA2BEX | 75- 5- 5- A- 1 | | 1,138,686-346-1097- C-90 |
| WA2SSJ | 12- 2- 2- - | K9CUY | 802,112-302-886- C-84 |
| | | WA9RQY | 87,846-121-242- C-47 |
| | | K9ODF | 80,040-120-223- C-48 |
| | | K9BUG | 66,933-111-201- B-30 |
| | | W9JQD | 36,570-106-115- A-14 |
| | | WA9WBE | 28,314- 78-121- A-24 |
| | | K9VKQ | 16,740- 62- 90- A-31 |
| | | W9FN | 12,780- 60- 71- C-20 |
| | | W9VDB | 8178- 47- 58- B-11 |
| | | W9UEM | 396- 11- 12- A- 5 |

Western Pennsylvania

| | | | |
|---------------|-------------------------|-----------|-----------------------|
| WA3GJU | 977,097-319-1021-ABC-62 | Wisconsin | |
| K7ADD/3 | 877,251-309-055- C-88 | W9EWC | 730,048-272-895- C-65 |
| W3NU | 735,396-318-776- C-60 | WA9JDT | 563,904-264-712- B-74 |
| K3HZL | 260,253-189-459- C-70 | W9KYZ | 469,350-225-696- C- |
| K3OTY | 199,398-167-398- C- | W9GIL | 405,981-237-571- C-60 |
| W3YLI | 107,586-129-278- C-21 | K9YBC | 36,450- 75-162- B-21 |
| WA3EJG | 41,724- 76-183- A-43 | W9BG | 32,058- 78-137- C-19 |
| W3PIX | 31,005- 65-159- B-26 | W9NLJ | 31,152- 88-118- C-12 |
| W3LNE | 22,656- 59-128- A-17 | K9EEF | 13,680- 60- 76- A-32 |
| WA3LJW | 18,172- 59-103- A-40 | K9DIN | 10,857- 47- 77- B-22 |
| W3KVS | 16,182- 58- 93- C-30 | W9SFK | 4608- 32- 48- C-14 |
| WA3GLA | 14,760- 60- 82- A-17 | WA9ZCP | 4590- 30- 51- A-17 |
| WA3KOS | 11,319- 49- 77-BC- 9 | W9ARTU | 2754- 27- 34- A-12 |
| K3JVT | 11,180- 53- 70- C-23 | W9WU | 1140- 19- 20- C- 3 |
| WA3EFH | 8694- 42- 69- C-11 | K9EUB | 216- 8- 9- A- 2 |
| W3VK | 1425- 19- 25- A-11 | WA9UMU | (WA9s TBA UMU UVE) |
| W3UT | 720- 15- 16- B- 4 | | |
| W3TV (4 oprs) | 162,792-133-408- C-12 | | |

CENTRAL DIVISION

Illinois

| | | | |
|--------|-----------------------|------------------------|-----------------------|
| W9QQN | 662,004-284-777- C-76 | WA9NSR (WA9s NSR OTH) | 335,699-221-507- B-85 |
| W9DWW | 425,334-247-574- C- | | 106,134-133-266- B-32 |
| WA9HJM | 411,312-209-656- C-71 | | |
| W9WYB | 213,192-168-423- C- | | |
| W9JJV | 187,605-165-379- C-62 | DAKOTA DIVISION | |
| W9OHH | 174,660-164-355- C- | <i>Minnesota</i> | |
| W9TFY | 131,703-143-307- C-45 | W0HP | 928,671-313-980- C- |
| WA9TFM | 107,100-140-255- A-45 | W0PAN | 338,832-208-543- B-60 |
| WA9NJB | 57,288- 88-217- B-22 | W0YIP | 108,392-163-328- C-39 |
| W9MZP | 33,534- 81-138- C-27 | W0AKDI | 118,860-140-283- C-36 |
| K9JDV | 30,024- 72-139- C-20 | W0WBE | 108,927-147-247- B-42 |
| K9MNT | 27,816- 76-122- A-17 | WA0NHG | 74,910-110-227- B-77 |
| WA9NPL | 27,720- 77-120- C-15 | W0WUI | 51,948-111-156- B-40 |
| W9DY | 22,568- 82-108- C-26 | WA0RUE | 32,760- 78-140- A-6 |
| W9GYN | 20,100- 67-100- A-34 | | |

| | | | |
|----------|----------------------|--------|-----------------------|
| W3GHD | 105,750-141-250- C- | W2EPA | 318,756-202-526- C-54 |
| K3UZY | 98,670-130-253- C- | K2QLL | 294,690-190-517- C-65 |
| K3JH | 87,639-131-223- C-24 | W2QKJ | 249,900-170-490- C- |
| WA3JLD | 83,520-116-240- B-59 | W2EOT | 241,113-179-449- C-29 |
| K3QDV | 75,000-100-250-AC-30 | K2PZF | 231,363-209-369- C-42 |
| W3VHV | 58,800-100-196- C- | W2EHB | 220,365-177-415- C-35 |
| K3GYS | 39,312- 78-168- C-12 | W2CME | 154,878-166-311- C-35 |
| W3CI | 34,632- 74-156- C-22 | W2PAU | 77,490-126-205- C-24 |
| W3MQ | 26,937- 73-123- C-10 | W2BCGW | 48,594- 89-182- B-20 |
| WA3KEY | 23,958- 66-121-AB-18 | W2KFL | 36,855- 91-135- C-14 |
| K3WJV | 15,048- 57- 88- A-22 | W2ZUL | 33,069- 73-151- C-26 |
| W3EAD | 15,042- 46-109- A-12 | WB2EUU | 32,400- 75-144- A-13 |
| WA3FOQ | 13,931- 41- 97- B-10 | W2ORA | 24,948- 63-132- B-22 |
| WA3IA | 10,836- 42- 86- B-12 | WB2SCK | 19,530- 62-105-BC-12 |
| W3EAN | 10,707- 43- 83- C- 6 | W2DYZ | 13,545- 43-105- B-16 |
| WA3IEM | 7791- 49- 53- B-11 | K2SQM | 13,254- 47- 94- B-18 |
| W3CGS | 5544- 33- 56- C- 6 | W2SDO | 12,768- 56- 76- C-17 |
| WA3JKO/3 | 3321- 27- 41- B- 6 | W2PFG | 12,720- 53- 80- B-12 |
| WA3AHQ | 3300- 25- 44- A- 7 | W2BHK | 9954- 42- 79- C-35 |
| WA3LXF | 1653- 19- 29- B-20 | WA2DVU | 7626- 41- 62- C- 6 |

Not one, but two entries from rare and exotic Indonesia. Gene, YB0AAB (above) on phone and Jack, YB0AAC (below) on c.w. are the 1st and 2nd U. S. hams licensed under the U. S.-Indonesian Reciprocal Operating Agreement. Back home they are WB4GCL and K1EJT respectively.

| | | | |
|-----------------|--------------------------|------------------------------|-----------------------|
| W3QIR | 1404- 18- 26- B- 4 | W2HDW | 6528- 32- 68- A- 7 |
| WA3GNL | 72- 4- 6- A- 1 | W2ITG | 6300- 42- 50-AC-19 |
| W3MG (8 oprs.) | 3,634,260-476-2545- C-96 | WB2UVB | 5940- 36- 55- A- 2 |
| W3WJD (4 oprs.) | 3,293,760-470-2336- C-91 | W2QWA | 5664- 32- 59- B-16 |
| W3AES (5 oprs.) | 726,600-280-865- C-96 | W2TQ | 3978- 34- 39- B- 8 |
| | | WB2MR | 3192- 28- 38- C- 8 |
| | | WB2MNM | 2553- 23- 37- A- 3 |
| | | WB2DRG | 1056- 16- 22- B- 9 |
| | | W2FYS | 969- 17- 19- A- 5 |
| | | K2PPQ | 510- 10- 17- A- 5 |
| | | WA2IZS (K2CPR, W2UI, WA2IZS) | 712,272-284-836- C-90 |
| | | WA2BPL (2 oprs.) | 103,740-130-266- B-33 |
| | | | 30,100- 86-117- A-11 |
| | | W2GGT (W2s GGT SDB) | 12,900- 43-100- C- 7 |

Maryland — D. C.

| | | | |
|-----------------------|--------------------------|--|--|
| W3MVB | 1,242,243-331-1251- C-88 | | |
| W3TLN | 884,070-285-1034- C-68 | | |
| W3BQN | 767,496-283-904-AB-C-80 | | |
| W3BWZ | 657,804-287-764- B-79 | | |
| WA3KEG | 628,575-289-725- C-53 | | |
| W3GRF | 439,770-214-685- C-50 | | |
| W3IN | 265,974-194-457- C-44 | | |
| W3AXW | 186,558-186-335- C-56 | | |
| K3GJD | 136,773-167-273- C-20 | | |
| K3AHB | 135,456-136-332- C-44 | | |
| W3CRE | 101,277-121-279- C-21 | | |
| W3HVM | 90,390-115-262- C-30 | | |
| W3FU | 81,792-128-213-AB-37 | | |
| WA3DCG | 73,440-153-160- C-31 | | |
| W3HH | 39,360- 82-160- C-24 | | |
| W3PZW | 20,832- 56-124- C-25 | | |
| W3ML | 16,461- 59- 93- A- 8 | | |
| W3GBB | 8856- 41- 72- C-11 | | |
| W3PWO | 7128- 44- 54- C- 8 | | |
| W3MFI | 6624- 32- 69- A- 8 | | |
| W3DPI | 1311- 19- 23-AB- 3 | | |
| WA3ENM | 459- 9- 17- B- 6 | | |
| WA3JRA | 243- 9- 9- B- 1 | | |
| W3MSK (9 oprs.) | 7,023,736-569-4152- C- | | |
| W3GN (W3s CBJ GN KMW) | 693,036-276-837- C-80 | | |

Western New York

| | | | |
|-----------------------|--------------------------|---------------------|------------------------|
| K9BJM | 16,335- 55- 99- B-18 | W0JJM | 27,132- 76-119- B-17 |
| W9PFD | 15,456- 56- 92- B-16 | WA0EPG | 22,958- 66-121- A-33 |
| W9EVX | 5406- 34- 53- A- 7 | W0FFWN | 22,344- 56-133- B-63 |
| W9JTT | 2622- 19- 46- C- 9 | K0EKR | 17,472- 64- 91- A-13 |
| W9ISF | 2040- 20- 40- B-27 | K0LJL | 4116- 28- 49- A- 3 |
| K9KXX | 352- 11- 11- B-30 | K0CNC (K0s CNC IJL) | 43,596- 84-173-BC- |
| K9YRA | 48- 4- 4-AB-15 | | |
| W9EXE (4 oprs.) | 1,544,700-380-1355- C-96 | <i>North Dakota</i> | |
| W9LKI (K9DII, W9LKI) | 700,944-272-859- C-47 | W0JWL | 44,550- 90-165- B-30 |
| K9PPJ (K9PPJ, WA9UFV) | 1,418,754-358-1321- C-95 | <i>South Dakota</i> | |
| W9BZW (W9s BZW GA2) | 652,743-273-797- C-65 | WA0CPX | 377,118-219-574- C-62 |
| WA9WXN (WA9s WAP WXN) | 148,770-145-342- A-68 | W0ACT | 241,902-178-453- C-59 |
| W9YYG (W9YYG, WA9QNU) | 45,825- 65-235- C-20 | W0BCPY | 75,597-113-223- C-30 |
| W9YH (3 oprs.) | 13,260- 60- 74- C-27 | W0OML | 32,307- 89-121- C-70 |
| | | W0WUU | 90- 5- 6- B- |
| | | K0VYV (6 oprs.) | 440,496-228-644-ABC-88 |



DELTA DIVISION

Arkansas
 WA5EFN 440,370-233-630- C-64
 WA6RTG 114,080-155-246- C-55
 W5PBZ 30,960- 86-120- B-25

Louisiana
 W5IOU 857,565-295-969- B-76
 W5TXN 442,080-240-614- C-67
 W5KC 271,920-206-440- C-35
 W5NOP 58,824- 86-228- C-28
 W5QWY 4879- 41- 41- C-15
 W5WUM (K5YPS, W5WMU, WA5OIH)
 776,628-282-918- C-88
 K5YPS (K5s SNI YPS)
 101,700-113-300- C-40

Mississippi
 W5OER 122,031-149-273- C-32
 K4ZDK/5 117,957-137-287- B-25
 K5AEU 100,388-136-246- -
 W5MUG 68,285-123-185- -
 WA5TTG 8556- 46- 62- C- 7

Tennessee

W4NBV 606,040-278-727-AC-65
 K4TTA 231,492-191-404- C-48
 W4FCJ 93,324-154-202- B-24
 W4EWR 53,550-102-175- C-23
 W4OQG 28,080- 72-130- B-17
 K4UWH 16,500- 50-110- A-15
 WA4QPM 15,000- 50-100- C-14
 W4LHE 5265- 39- 45- B- 6
 K4YXP 5244- 38- 46- B-10
 W4VSV (WA4ZZU, opr.)
 4794- 34- 47-AC- 9
 WB4IYZ 3483- 27- 43- A-11
 W4ODR (10 oprs.)
 712,332-282-842-ABC-96

GREAT LAKES DIVISION

Kentucky

K4RZK 151,209-159-317- C-41
 K4FU 123,627-203-203- A-37
 K4KI 28,359- 69-137- B-27
 WA4LMD 15,312- 58- 88- C- 7
 W4FIM 2553- 23- 37- C- 6
 WB4DQM (5 oprs.)
 7320- 40- 61-BC-24

Michigan

W8SH (K1ZN, opr.)
 1,230,460-340-1207- C-85

K8HZU 794,802-278-853- C-70
 W8TWA 521,076-258-674- C-86
 W8DQL 191,070-165-386-AC-36
 K8PAO 172,692-156-373-BC-50
 W8HXZ 166,320-144-395- A-60
 W8ZDT 163,751-153-348- C-35
 W8RXY 158,765-161-314- C-44
 W8BOSL 155,958-139-374- B-30
 WB8BLA 145,860-149-340- B-63
 W8DQL 131,685-131-355- C-38
 K8UDJ 119,505-155-257- C-28
 K8BZG 102,180-131-280- C-38
 W8FRJ 47,571-101-157- C-28
 W8AZCO 44,226- 81-182- C-15
 K8IDE 33,654- 71-158-AB-16
 W8JJA 30,099- 79-127- C- 8
 WB8BZG 16,758- 57- 98- B-19
 W8BVVU 15,480- 60- 86- A-12
 WB8CXW 14,220- 60- 79- C-19
 W8AGGN 11,700- 52- 75- B-33
 W8ZZZ 10,656- 48- 74- -
 WB8CDG 10,620- 59- 60- B-13
 W8MKO 7788- 44- 59-BC-23
 K8ATU 5640- 40- 47-AB- 1
 WB8BEG 4884- 37- 44- B- 9
 W8EGR 4386- 34- 43-BC- 6
 W8TWT 1568- 18- 29- B- 3
 WA8QJK 1368- 19- 24- A- 4
 WA8ZAA 1368- 19- 24- A- 4
 W8SS 1275- 17- 25- C- 1
 WA8VZK 663- 13- 17- B-10
 W8RVD 336- 8- 14- C- 1
 WA8VRB 264- 8- 11- A- 1
 WA8LYF (K8HLR, WA8s GUF LYF)
 1,275,120-330-1288- C-82
 W8NGO (4 oprs.)
 915,474-307-994-BC-78

Ohio

K8DOC 664,008-292-758- C-
 W8LXU 588,861-273-719-AB-62
 W8GEG 450,192-226-664- C-36
 K8AXG 355,284-213-556- B-61
 W8IFA 354,855-205-577- C-70
 W8BDO 322,890-235-453- C-96
 K8CFH 304,128-192-528-AC-53
 W8AMCR 216,999-171-423- C-25
 W8ZOK 207,360-162-428- C-64
 W8BVF 193,800-170-380- C-34
 W8DKI 159,408-162-328- C-34
 W8LAX 158,436-163-324- C-52
 W8IR 157,785-157-335- C-58
 W8BF 111,612-142-262- C-27
 W8AQZ 109,752-136-269- C-45
 K8GVK 104,910-130-269- B-
 W8HQB 91,212-132-231- C-43
 K8BSM 90,684-132-229- C-18
 W8NPF 72,207-113-213- C-38
 W8YGR 65,148-122-178- A- 8
 W8OG 62,467-109-191- C-12
 K8MMH 62,418-103-202- A-43
 WA3BGE/8

58,656-104-188- C-16
 58,509- 99-197- C-19
 53,631-101-177- A-
 W8GMX 41,820- 82-170- B-50
 W8MBW 39,990- 86-155- C-26
 W8AJV 39,342- 79-166- A-
 W8WU 35,334- 78-151-BC-15
 W8YCU 34,122- 94-121- C-10
 K8NMG 33,078- 74-149- B-24
 W8RZC 26,196- 74-118- C-30
 W8DWP 25,920- 72-120-AB-92
 W88APJ 21,228- 58-122-BC-15
 W8CFH 19,092- 74- 86- C- 6
 W8NCV 17,820- 60- 99-BC-30
 W8BQV 16,635- 61- 91- B-17
 W8XQX 15,936- 64- 83- A- 5
 W8KZL 12,852- 51- 74- C-28
 W8EUD 11,880- 44- 80- C- 6
 WA8TYF 11,880- 44- 80- C- 6
 W8SLL 10,000- 51- 66- A-11
 W8RZC 8701- 36- 75- A-18
 W8IRC 8179- 39- 63- A-20
 W8MJE 6960- 40- 58- C- 9
 W8VZE 4182- 34- 41- B- 6
 WB8BZX 3876- 34- 38- B- 1
 W8RZC 4298- 12- 13- B- 1
 W8IDM 429- 11- 7- A- 4
 W8SKC 128- 6- 13- A- 2
 K8FXD 48- 4- 4- B- 1
 K8ZGC 36- 3- 4- B- 4
 K8AMG/8 12- 2- 2- B- 1
 WA8UQH (K8RMK, WA8s SLW UQH)
 250,800-176-475- C-46
 WA8WHN (WA8s SIL WHN)
 95,226-118-269- C-80

HUDSON DIVISION

Eastern New York

W2DXL 1,040,712-309-1130- C-84

W8BZPW 238,328-172-458- A-40
 WA20J 214,200-168-425-BC-31
 W8ZAV 184,574-187-394- B-40
 K2JMY 100,500-125-268- C-23
 WA2WSH 83,475-105-267-AB-28
 W8BSH 77,112-108-238- B-29
 W8ZMOI 70,200-104-225- C-37
 WA2AM 51,464- 96-203- C-15
 W8ZTF 31,200- 80-130- B-17
 W9EFE 12,402- 39-106- B-11
 WA2CA 5145- 35- 49- B-12
 WA2ECF 4284- 28- 51- A-13
 WB2BXL 3150- 25- 42- A- 7
 VE7BNE/W2 2366- 26- 31- B-16
 K2KNL/2 546- 13- 14- A- 4
 WB2ABJ (WB2s HEM UVD WHW)
 175,560-154-380- -65

N. Y. C.-L. I.
 WA2CMV 578,952-284-731- C-65
 WB2UZU 542,340-276-655- C-56
 W9SUC 505,008-252-668- C-60
 WB2CKS 443,762-253-587- C-41
 W9CPC 317,022-222-467- C-60
 W9FSK 273,465-177-515- C-69
 W9WZ 266,295-205-433- C-41
 W2DKM 248,472-174-476- A-50
 WB2ZTH 228,284-173-436- A-59
 W9PCJ 209,118-182-395- C-34
 K2UQT 205,326-183-374- C-55



WAØEMS (WAØEMS, WNØTSI) takes over the Midwest Division leader spot for a multi-op entry. Larry (shown operating) with the assistance of Frank, WNØTSI as logger, made an impressive score of over 443K.

W2LEJ 146,700-150-326- B-46 F3VN/W2 4680- 80- 52- B- 5
 WB2EXS 144,840-138-355- A-45 WA2DFB 3300- 25- 44- A-28
 WB2YKU 144,738-129-374-AB-31 WB2DYB 1848- 22- 28- B-10
 WA2QEB 51,294-103-166- A-60 WB2YBA 1080- 18- 20- C- 3
 W2IRV 32,412- 73-148- C-15 K2SKV 1026- 18- 19- C- 1
 W2YCW 20,979- 63-111- C- 9 WA2HEJ 819- 13- 21- A- 9
 W2CKR 18,900- 50-126- B-27 WB2GPG 243- 9- 9- A- 3
 W2UFS 18,792- 58-108- A-12 WB2RKK 144- 6- 8- A- 1
 WB2WXR 14,400- 50- 96- A-20 WB2UDQ (WA2ATO, WB2UDQ)
 10,486- 48- 72- B- 649,152-276-784- C-69
 W2BNS 9159- 43- 71- A-18 W2GLQ (5 oprs.)
 W2NBI 5445- 33- 55- B-13 338,940-210-538- C-76
 WB2TBP 4992- 32- 52- A- 7 K2BMI (K2BMI, WA2DPT)
 W2ZFG 2180- 24- 30- A-26 4851- 33- 49- A- 5
 W2JB 1500- 20- 25- A- 6
 W2TUK 1449- 21- 23- C- 2
 WB2ZIN 1104- 16- 23- A- 5
 WA2FQG/2 (4 oprs.)
 904,267-321-939-AC-96

MIDWEST DIVISION

Iowa
 KØDQI 302,100-212-475- C-39
 WA8SDC 121,635-183-265- B-19
 KØIR 11,100- 50- 74-BC-16
 KØWSR/Ø 2880- 30- 32- B-18
 WA8RQ/Ø 2806- 26- 36- B-27
 WA8PKE 2650- 25- 34- B- 9

Kansas
 WØPAH 146,475-175-279- C-38
 WØECV/Ø 114,048- 96-396- C-48

Northern New Jersey
 W2JSX 710,424-286-828- C-80
 W2MB 639,090-263-810- C-70
 WB2CKB 220,941-167-441- B-48
 W2YTT 175,800-100-586- B-49
 WA2VSO 134,055-135-331- B-50
 WA2DZU 68,478-101-226- B-50
 W2W 58,812-116-169- A-14
 W2DMJ 45,318- 83-182- A-14
 W2FFQ 25,149- 83-101-BC-23
 W2CKK 16,020- 60- 89-BC-42
 W2YFM 14,905- 47-105- B-17
 WA2MYB 8504- 48- 66- A-18
 W2SE 8160- 40- 68- C-30
 W2UL 4725- 35- 45- A-14

Missouri
 KØJPG 205,630-170-403- C-70
 WØNZY 48,480-101-180-AC-15
 KØGSV 38,916- 84-138- C-28
 WØTVC 37,120- 80-156- C-40
 WØBET 30,338- 79-128- C-18
 WØUCK 26,220- 76-115- C-30
 WØBA 19,200- 64-100-AC-14



Leading the Tennessee section, W4NBV managed to bang out 677 two-ways for a fine score of 517K. His operating position doesn't leave much to be desired, does it?

| | | | | | |
|--------|------------------------|------|----------------------|------------------|------|
| W0DSW | 13,932-54-86- | A-15 | K1DIR | 41,160-98-140- | C-7 |
| WA0EMS | (WA0EMS, WN0TSI) | | K1AGB | 27,432-72-127- | A-17 |
| | 443,445-235-631- | C-52 | W1FJJ | 24,624-72-114- | C-10 |
| WA0TKV | (16 ops.) | | W1ESN | 21,800-73-100- | C-15 |
| | 75,030-122-205- | C-45 | WA1XL | 21,018-82-113- | B-14 |
| | <i>Nebraska</i> | | WA1FHU | 20,001-59-113- | C-14 |
| WA0LGR | 257,232-184-466-ABC-60 | | W1EJE | 18,968-56-101- | A-12 |
| | 152,712-168-303- | C-47 | W1CT | 12,654-57-74- | C-19 |
| W0IDW | 16,356-58-94- | B-14 | W1PLJ | 5,445-33-55- | B-18 |
| W0YOY | 10,366-58-94- | B-14 | WA1TON | 4788-38-42- | A-6 |
| K0QKW | 11,250-60-75- | C-24 | KH6JJ/1 | 1914-22-29- | A-8 |
| K0LFA | 3102-42-47- | C-7 | K1CSJ (K1CSJ, W1FJS) | 127,305-115-369- | C-40 |
| WA0GVJ | 390-10-13- | A-2 | | | |

NEW ENGLAND DIVISION

| | | | | | |
|----------------------------|-----------------------|------|-------|------------------|------|
| | <i>Connecticut</i> | | K1GAX | 199,260-180-369- | C-40 |
| K1THQ1 | 1,082,952-312-1157- | C-75 | W1PCD | 142,308-134-354- | C-53 |
| W10KG | 996,816-304-1093- | C-89 | W1MFK | 41,280-86-160- | B-32 |
| K1JHX | 773,430-254-1015- | C-50 | W1JD | 18,192-48-127- | A-42 |
| W1BIH | 729,008-283-861- | C-52 | | | |
| WA1DJG | 579,880-280-691- | A-58 | | | |
| K1GUD | 290,832-166-584- | C-32 | | | |
| K1VTM | 282,308-178-529-AB-57 | | | | |
| W1D0 | 229,272-164-466- | C-36 | | | |
| W1ETU* | 213,756-188-379-AC-30 | | | | |
| K1DPB | 212,394-182-389- | B-42 | | | |
| W1CW* | 164,268-117-468- | C- | | | |
| W1AIED | 138,150-150-307- | A-29 | | | |
| WA1IWD | 93,456-132-236- | A-60 | | | |
| W1ZUQ | 32,250-86-125- | C-19 | | | |
| WA1HSB | 31,824-78-136- | B-19 | | | |
| WA1FJU | 30,573-79-129- | A-13 | | | |
| W1ICP* | 27,729-79-117- | - | | | |
| W1CNU | 25,785-45-191- | B-16 | | | |
| W1DIT | 18,600-62-100- | C-17 | | | |
| W1ARR* | 9792-48-68- | A-6 | | | |
| WA1DIU (K3LSX, opr.) | 4929-31-53-ABC- | 9 | | | |
| W1YYM* | 2760-23-40- | C-7 | | | |
| WA1JYU | 2664-24-37- | B- | | | |
| WA1HNR | 1794-23-26- | A-2 | | | |
| K1TKS | 1296-18-24- | A-7 | | | |
| WA1KQM/1* | 1020-17-20- | B-4 | | | |
| W1LVQ* | 462-11-14- | - | | | |
| WA1CJE (WA1s CJE JAD) | 204,768-158-432- | A-25 | | | |
| WA9HHH/1* (WA1KQM, WA9HHH) | 30,480-80-127-BC-18 | | | | |

Eastern Massachusetts

| | | |
|---------|---------------------|------|
| W1AX | 1,205,820-348-1155- | C-65 |
| W9MIJ/1 | 467,670-238-655- | C-66 |
| W1UYU | 165,375-147-375- | B-59 |
| W1EHT | 119,520-120-332- | B-29 |
| W1MO | 47,736-102-156- | B-18 |

NORTHWESTERN DIVISION

Idaho

| | | |
|--------|-----------------|------|
| W7D | 89,358-106-281- | C-28 |
| WA7HOX | 31,563-63-167- | A-21 |
| W7KK | 2448-24-34- | C-5 |

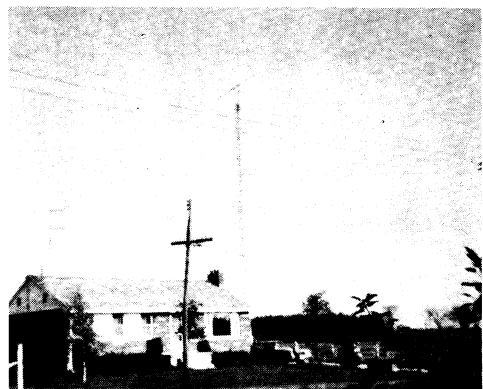
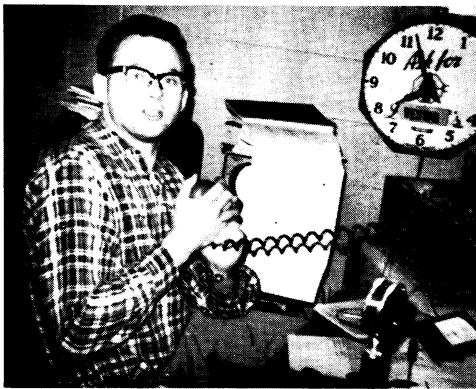
| | | | | | |
|----------|-------------------|------|---------------------------|------------------|------|
| | <i>Montana</i> | | <i>Sacramento Valley</i> | | |
| W7EOI | 116,820-132-295- | C-45 | W6SIA | 128,424-134-312- | B-32 |
| K7CTI | 12,600-50-84- | A-10 | W6KNR | 16,287-61-89- | C-18 |
| WA0ATY/7 | 330-10-11- | B-6 | WA6JDT | 1566-18-29- | A-9 |
| | <i>Oregon</i> | | <i>San Francisco</i> | | |
| WA7IHN | 12,978-42-103- | A-36 | W6PTS | 276,960-160-577- | C-48 |
| W7YEX | 11,088-48-77- | B-12 | WA6CPY | 83,592-86-324- | C-30 |
| | <i>Washington</i> | | W6ERS | 8040-40-67- | B-25 |
| W7BJ | 165,480-120-460- | C-63 | W6BYMW | 3294-27-41- | B-14 |
| W7MSI | 146,280-115-424- | C-54 | W6BIP (W6BIP, WA6DJI) | 287,271-177-541- | C-37 |
| WA7JCB | 23,088-52-148- | A-21 | | | |
| WA7JRY | 12,720-53-80- | A-22 | | | |
| W7VRO | 10,098-33-102- | C-9 | <i>San Joaquin Valley</i> | | |
| WA7GYR | 1170-13-30- | B-5 | W6JPC | 188,328-144-429- | C-35 |
| | | | W6MMH | 5376-32-56- | B-17 |

PACIFIC DIVISION

| | | | | | |
|----------------------------|---------------------|------|---------------------------|------------------|------|
| | <i>East Bay</i> | | <i>Santa Clara Valley</i> | | |
| K6AHV1 | 1,239,672-314-1340- | C-82 | W6ESI | 313,110-245-426- | C-60 |
| K6AUC | 349,332-172-677- | C- | WA6BKN | 309,970-165-626- | B-70 |
| WA6AHF | 147,396-142-346- | C-28 | W6ISQ | 249,900-175-476- | C-33 |
| K6MHD | 31,500-70-150- | C-17 | K6TXR | 219,294-186-393- | C-56 |
| WA6IQM | 7752-34-76- | C-5 | W6NTQ | 202,623-137-493- | C-42 |
| W6IAM | 7344-34-76- | C-18 | W6CCV | 192,708-159-404- | C-43 |
| W6EJA | 150-5-10- | C-1 | K6PIH | 177,708-118-502- | C-40 |
| K6AN (K6AN, W6s RGG VNH) | 962,631-303-1059- | C-94 | K6ITL | 177,165-155-381- | A-49 |
| WA6UFW (W6BH, WA6s QM UFW) | 821,340-270-1014- | C-90 | W6ZBS | 120,060-145-276- | B-57 |
| W6KG (W6s DOD KG) | 573,306-214-893- | C-36 | W6EBO | 73,509-107-229- | C-40 |
| K6ILG (5 ops.) | 374,574-163-766- | C-48 | W6ZM | 72,600-110-220- | C-22 |
| | <i>Nevada</i> | | K6ALH/6 | 65,508-106-206- | C-23 |
| W7TZL | 157,687-137-387- | C-50 | W6BHH | 54,900-100-183- | C-21 |
| W7GVA | 11,421-47-81- | C-13 | W6WX | 50,400-105-160- | C-17 |
| K7TLB | 6549-37-59- | A-28 | W6VK | 31,416-84-139- | B-10 |
| W7TVF | 3444-28-41- | A-9 | K6UXV | 21,777-61-119- | B-37 |
| | | | W6AOI | 19,005-48-132- | C-17 |
| | | | W6EJ | 16,929-57-99- | C-20 |
| | | | W6HPG | 11,250-50-75- | C-6 |
| | | | W6ZKM | 10,455-41-85- | C-11 |
| | | | WA6BYY | 10,206-42-81- | B-40 |
| | | | W6MVL/6 | 5832-36-54- | B-10 |
| | | | K6DC | 4158-33-42- | C-3 |



YU1BCD, multi-op c.w. group from Panevo, managed an excellent 2146 QSOs for a score of just over 1.1 million. Shown at the operating position are from left to right, YU1s NGX, BCD, NQW, QBC and NQM. The Radio Club "M. Pupin" QTH sports a 2-element tri-band quad which does an excellent job judging from the many awards seen on the wall.



Claude, VE3WQ, paced Canadian phone entries with a score of 578K, quite sufficient for Canadian Division leadership. He comments that he learned a lot in this contest and is hoping to improve his score next year.

| | | | |
|------------------|--------------------------|----------------------|--------------------------|
| W6KHS | 2850-25-38- C-3 | W4KMS | 22,638-77-98-BC-14 |
| WB8UOM | 2688-28-32- A-10 | W4YHD | 20,846-62-111-AC-5 |
| K6AO | 2448-24-34- C-16 | K4ORQ | 7980-38-70- C-4 |
| W6CLM | 2337-19-41- C-11 | W4EXI | 3567-29-41- B-11 |
| WB8ZHD | 2250-15-50-AB-10 | K4CG (7 ops.) | 1,574,640-360-1458- C-90 |
| W6GBY | 1248-18-26- B-23 | W4KFC | (K4OKZ, W4KFC) |
| K6TZX | 1200-16-25- A-5 | | 422,688-224-629-BC-46 |
| K4BVD/6 (7 ops.) | 1,807,056-356-1692- C-96 | | |
| K6ERV** | | <i>West Virginia</i> | |
| | 260,100-170-510- C-45 | K8YBU | 1,013,760-320-1056- C-91 |
| K6CQF** | 250,101-177-471- C-48 | K8QYG | 83,490-121-230- B-40 |
| W6JKJ** | 205,275-161-425- C-41 | W8SVM | 5781-41-47-BC-10 |
| | | W8BJ | 3876-34-38- B-30 |

| | | | |
|------------------------|-----------------------|-----------------------|--------------------------|
| WA4UFW/4 | 72,072-104-231- A-19 | K6YFZ | 31,356-78-134- C-22 |
| W4BYB | 64,239-133-161- B- | K6OC | 20,242-58-117-BC-21 |
| WB4JSV | 53,280-111-160-BC-32 | W6NWQ | 20,184-58-116- C-22 |
| W4FFF | 42,021-87-161- C-16 | W6ZHT | 2808-26-36-AB-80 |
| W2FCR/4 | 40,890-94-145- A-26 | W6EJM | 1320-20-22- A-2 |
| W4UF | 23,214-73-106-BC-12 | W6ECM | 12-2-2- B-1 |
| W4ONO | 14,880-62-80-BC-17 | W6UUI (7 ops.) | 686,616-244-938- C- |
| W4GHV | 1500-20-25- A-6 | W6BVFJ (4 ops.) | 356,400-180-660-BC-71 |
| W4EEO | 300-10-10- A-5 | | |
| W4HOS (K4SHB, W4HOS) | 195,300-175-372- B-56 | <i>Orange</i> | |
| WB4LFV (K4TRI, WB4LFV) | 28,500-76-125-AC-25 | W6BUDC | 698,112-256-909- C-80 |
| | | W6GLM | 146,124-132-369- C-25 |
| | | W6MLMN | 108,300-100-361- B-68 |
| | | W6YMV | 106,800-136-260- C-24 |
| | | W6AFT | 26,622-58-153- A-40 |
| | | W6YFM/6 | |
| | | | 26,622-58-153- A-24 |
| | | K6YNB | 19,800-60-110- C-8 |
| | | W6BYWQ | 11,424-51-78- B-21 |
| | | K6YUC (6 ops.) | |
| | | | 1,577,829-349-1507- C-90 |
| | | W6BFCR (W6Bs FCR RQM) | 160,545-139-385- B-48 |

ROANoke DIVISION

| | |
|-----------------------|-----------------------|
| <i>North Carolina</i> | |
| WA4UXU | 337,980-215-524- A-90 |
| K4HJE | 285,168-208-457- C-70 |
| W4TMR | 147,840-154-333-AB-57 |
| K4AJR | 140,553-161-291- C-27 |
| K4SKI | 125,598-121-346- C-32 |
| WB4EEM | 105,501-139-253- B-37 |
| W4BQY | 42,120-104-135- C-14 |
| K4BBK/4 | 41,223-91-151- C-11 |
| W4OMW | 17,568-61-96- C-17 |
| W4WWD | 8844-44-67- C-14 |
| WB4IRD | 3948-28-47- B-5 |
| K4CIA | 3108-28-37- C-4 |
| W4YDY | 2897-29-31- C-4 |
| W4VON | 1170-18-22- C-6 |
| WB4MHF | 810-15-18- B-4 |

ROCKY MOUNTAIN DIVISION

| | |
|----------------------|-----------------------|
| <i>Colorado</i> | |
| WA9GUH | 114,540-115-332- A-52 |
| WA9TAM | 25,773-71-121- B-48 |
| WA9NOS | 20,879-61-113- B-19 |
| WAUDS/Ø | 1242-18-23- A-8 |
| WA9CVS/Ø | 1083-19-19- C-2 |
| <i>New Mexico</i> | |
| W5EU | 433,528-188-770- C-52 |
| K5FHL (WA5VPY, opr.) | |
| | 260,568-154-566- B-78 |
| K5STL | 47,586-103-154- B-30 |
| W5QLC | 24,948-54-154-AC-26 |
| W5QNY | 21,420-68-105- A-30 |
| WA5ROU | 4896-34-48- A-16 |
| W5QNZ | 1701-21-27- A-7 |
| WA5VAL | 1152-16-24- A-20 |

South Carolina

| | |
|---------|-----------------------|
| K4II | 557,109-259-717- C-72 |
| WØDAD/4 | 112,665-145-259- C-20 |
| K6QPH/4 | 38,916-94-138- C-18 |
| WB4CPE | 30,600-68-150- A-18 |
| K4AVU | 2142-21-34- C-4 |
| WB4GGA | 1920-20-32- B-18 |
| W4ULY | 1848-22-28- A-7 |

Virginia

| | |
|--------|--------------------------|
| W4BVV | 1,751,718-362-1613-AC-74 |
| W4SYL | 865,536-322-896- C-66 |
| W4ZCY | 815,648-284-958-BC-64 |
| W4NJF | 407,517-233-583- C-62 |
| W4DFK | 369,900-225-548- C-66 |
| W4EZ | 312,000-200-520-AC-42 |
| W4VAN | 301,735-185-545- C-58 |
| W4OPM | 286,272-192-497- C-36 |
| W4WSF | 218,241-177-411- B-40 |
| WB4LEH | 145,545-155-313- C-60 |
| W4DM | 141,570-143-330- C-20 |
| K4PCL | 105,096-116-302- C-34 |
| W4LRN | 91,884-124-247- C-16 |
| W4CRW | 91,728-91-336- A-50 |
| W4JWU | 88,893-119-249- C-48 |
| K4ZA | 81,900-130-210- A-24 |
| W4WBC | 80,724-124-217- C-30 |
| W4ZM | 64,872-102-212- C-8 |
| W4GF | 60,795-105-193- B-19 |
| W4FPW | 58,080-110-176- B-24 |
| K4CFB | 57,036-98-194- C-22 |
| W4ZMH | 48,336-76-212- C- |
| W4IUO | 33,741-69-163- C-18 |
| W4IF | 29,304-74-132- B-60 |
| WB4HNV | 27,144-87-104- C-15 |
| WB4AMT | 23,562-66-119- C-16 |

Utah

| | |
|---------------------|-----------------------|
| K9LBJ/7 | 399,984-208-641-BC-36 |
| W7HS | 270,000-180-500-AC-65 |
| W47CQ | 76,320-108-240- C-30 |
| W47DTG | 31,688-58-182- A-26 |
| K7RAJ (K7s NXH RAJ) | |
| | 720,900-267-900- B-88 |

SOUTHEASTERN DIVISION

| | |
|------------------------|-----------------------|
| <i>Alabama</i> | |
| W4ZNI | 354,034-229-516- C-70 |
| WB4HJN | 48,825-93-175- B-28 |
| K4DY | 12,027-57-71- C-16 |
| K4DOY | 11,457-57-67- B-19 |
| W4RYY | 11,094-43-86- B-6 |
| W4GRG | 5922-42-47- C-4 |
| W4WJW | 816-16-17- B-4 |
| WB4EOW | 363-11-11- A-5 |
| <i>Eastern Florida</i> | |
| WB4DJQ | 377,955-227-555-AC-58 |
| W4ORT | 289,152-192-502- A-76 |
| W4AZK | 229,120-190-396- C-33 |
| W4LVV | 213,920-191-375- C- |
| WA4NYJ | 146,716-172-285- C-34 |
| W4A10 | 140,688-144-327-BC-44 |
| W4GZD | 126,567-147-287- B-70 |
| W4ALFP | 108,585-127-285- B-35 |
| W4NPE | 84,864-104-272-BC-49 |
| WB4IAE | 74,580-110-226- A-30 |

Georgia

| | |
|-----------------|-----------------------|
| K4EZ | 646,098-257-838- C-62 |
| W4DXI | 282,600-200-472- C-65 |
| W4DQD | 161,370-163-300- A-44 |
| K4HMx | 41,499-87-159- B-20 |
| K4VUD/4 | 21,630-70-103- B-22 |
| WA4QPL (7 ops.) | 385,065-215-597- A-92 |

Western Florida

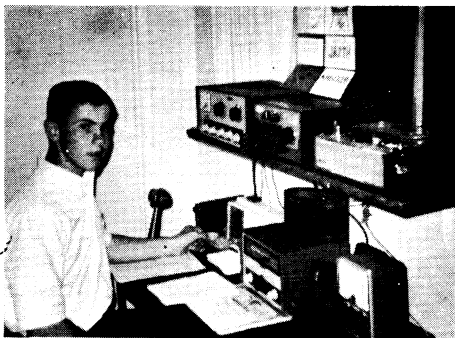
| | |
|----------|-----------------------|
| K4OSE | 265,221-209-423- C-28 |
| WB4JCV | 214,896-176-407- C-56 |
| WA7JAN/4 | 64,995-105-207- B-35 |
| W4YVW | 63,525-77-275- C-42 |
| 8R1Y/W4 | 9308-52-61- A-29 |

SOUTHWESTERN DIVISION

| | |
|----------------------|-----------------------|
| <i>Arizona</i> | |
| W7AAY | 350,175-175-667- C-61 |
| W47GFT | 341,715-209-545-BC-42 |
| W7FF | 157,942-157-337-AC-58 |
| W7UDG | 89,586-126-237- A-24 |
| W7FCD | 62,727-87-241- A-22 |
| W47DRG | 32,886-63-174- A-22 |
| W7GKV | 32,361-67-161- A-16 |
| W47HRE | 5760-40-48-BC-22 |
| W7A1SP | 2553-23-37- B-9 |
| W7AUN | 165-5-11- B-2 |
| <i>Santa Barbara</i> | |
| W6TA | 124,752-138-302- C-40 |
| W6GRX | 79,968-112-328- C-36 |
| W6GEB | 9594-41-78- A-10 |
| W6BWK | 1275-17-25- A-7 |

WEST GULF DIVISION

| | |
|-----------------------|--------------------------|
| <i>Northern Texas</i> | |
| W5KTR | 1,133,560-340-1112- C-81 |
| W5OGS | 821,712-304-901- C-88 |
| WA5RXT | 388,596-212-611-BC-60 |
| W5EQT | 301,500-201-508- C-37 |
| WA5LUM | 237,864-187-424- A-57 |
| WA5GSD | 176,472-152-387- C-60 |
| W5OBS | 163,620-180-303-AC-38 |
| W5OZO | 86,198-131-220-BC-25 |
| W5KYD | 79,055-97-273- C-39 |
| W5FCX | 64,419-109-197- C-13 |
| WA5VSL | 56,430-110-171-BC-51 |
| W5A5QU | 53,106-106-167- B-55 |
| K5MFA | 17,160-65-88- C-80 |
| W5HDD | 14,400-60-80- B-17 |
| WA5UCT | 8004-46-58- A-24 |
| W5OHE | 7506-36-70- B-12 |
| WA5TET | 6642-41-64- B-11 |
| W5KND | 3225-25-43- B-19 |
| W5QZG | 675-13-15- A-3 |
| W5MSG | 507-13-13- A-5 |
| WA5PPZ | 27-3-3- B-1 |
| W5FLP (W5s FL OPZ) | |
| | 398,663-233-571- C-55 |
| W5TKB (W5s EQT TKB) | 179,829-159-377- C-23 |



One of many Southern California entries, here's WB6ZHT operating from San Pedro. From the cards on his wall my guess is that Bill's DX6OB puts out a nice signal.

Oklahoma
 K5BOC 506,180-240-703- C-63
 WA5LOB 480,822-254-631- C-56
 W6PAA (7 oprs.)
 9555- 49- 65-AC-16

Southern Texas

W5NMA 817,749-279-977- C-70
 W5MHV 191,520-168-380- C-60
 W5LZZ 70,920-120-197- B-27
 W5LJT 59,940-108-185- C-24
 WA5AUZ 31,395-91-115-BC-16
 W5OP 17,199- 63- 91- C-21
 W5ULN 14,514- 59- 82- A-20
 W6ELN 14,160- 59- 80- A-50
 K2EJU/5 12,921- 59- 73-AB- 7
 W6EDX 10,472- 56- 64- B-30
 W6RO 8190- 39- 70-BC-23
 WA6SXR 2511- 27- 33-BC- 7
 W6AC (WB2HEY, WA4ARV,
 K5SRB)

CANADIAN DIVISION

Maritime

VO1AW 61,824- 92-224- C-18
 VO1DC 23,100- 50-154- B-14
 VE1EK 16,200- 50-108- A-12
 VO1CM 3528- 28- 42- B
 VE1AHK (VE1s ACU ASJ DH)
 552,486-242-761-AB-36

Quebec

VE2NW 551,286-249-738-AC-60
 VE2WA 459,516-257-596- C
 VE2WY 380,196-236-537- C-46
 VE2AYU 378,684-201-628-ABC-69
 VE2YU 306,327-203-503- A-52
 VE2BV 274,034-181-508- B-49
 VE2BGJ 226,748-171-442- C-45
 VE2AJV 115,311-113-289- A
 VE2DCX 78,921-111-237- B-32
 VE2AJ 9984- 52- 64- B- 3
 VE2BTQ 405- 9- 15- B- 3
 VE2BJ 270- 9- 10- B- 5

Ontario

VE3WQ 578,340-255-756- C-69
 VE3HJ 177,833-163-367- C-46
 VE3MB 99,225-135-245- B-36
 VE3BS 20,160- 80- 84- B-10
 VE3FGV 6450- 43- 50- A-19
 VE3ALF 2296- 28- 28-BC-16
 VE3BWL 1500- 20- 25-BC- 8
 VE3FHO (VE3s EUC FHO GCO)
 1,580,302-367-1436- C-93
 VE3CFP (2 oprs.)
 25,149- 83-101-AC-25

Manitoba

VE4FU 237,540-185-428- B-50
 VE4SD 136,359-139-328- B-58

VE4MP 127,140-163-260- B-54
 VE4ZX 89,362-136-219- C-
 VE4SK 53,631- 59-303- B-20
 VE4RP 37,947- 91-145- C-50
 VE4AS 28,290- 69-138- B-36
 VE4BJ 21,165- 83- 85- B-26
 VE4CJ 147- 7- 7- B- 3

Alberta

VE6GN 193,167-169-381- A-50
 VE6AP 151,302-151-334- B-55
 W8ILH/VE6
 120,663-123-327-ABC-52
 VE6AGV 99,534-106-313- A-44
 VE6BG 24,480- 68-120- A-35
 VE6MJ 675- 15- BC- 3
 VE6AVR (VE6s AED AVR)
 57,321- 99-193-AB-41

British Columbia

VE7BH 89,760-110-272- C-46
 VE7BQF 45,123- 89-169- B-23
 VE7IQ 32,565- 65-171- C-39
 VE7VP 2808- 24- 39- B-27
 VE7AZG 1776- 16- 37- A-18
 Check logs: W1FK, W2s CVW
 ECI, WB2SH, K3CBW, W3TP,
 K9YWG/4, K6s AUC JXH, W6-
 CFG, WA9AQE, VE3CEA, VE6-
 KK, VE7AAA, VO1HI.

PHONE SCORES

AFRICA

Angola

CR8GA 1,475,508-164-2999- C-86
 CR8GM
 1,023,630-149-2290- A-49
 CR8LX 259,257- 89-971- B-
 CR8GS 145,152- 96-504- B-26

Mozambique

CR7DS 640,563-141-1515- A-
 Check log: CR7s FR JQ.

Liberia

EL2BD 995,788-173-1919- C-60

Ethiopia

ET3USA (7 oprs.)
 478,952-137-1166- A-30

Ascension Island

ZD8Z 4,116,735-245-5820- A-60

Rhodesia

ZE8JY 128,898- 93-464- A-22

South Africa

ZS6DW 1,674,768-184-3034- B-

ZS6ACK 290,719-107-906- A-24
 ZS6FN 150,246-102-491- A-10
 Check log: ZS6YB.

Southwest Africa

ZS8S 405,384- 48-1016- B-

Libya
 5A4TY (2 oprs.)
 16,422- 46-119- B- 7

Tanganyika
 5H3KJ 1,081,920-160-2349- A-45

Lesotho
 7P8AR 1,690,854-187-3014- A-51

Saudi Arabia
 7Z3AB 95,976- 62-516- B-

ASIA

Iran

EP3AM 656,466-142-1541- B-48
 EP2BQ 224,334-103-726- B-18

Korea

HL9KQ 86,130- 66-435- B-29

Japan

JA1AEA 1,487,808-192-2595- C-
 KA2RM 1,300,266-198-2189- C-58
 JA1CG 560,945-155-1207- A-
 JA1DXE 389,628-137-948- A-
 JA3LGG 185,490- 90-687- A-26
 JA1IIZ 116,130- 79-491- A-22
 JH1CBI 79,395- 79-335- A-12
 JA2JAA 75,600- 72-350- B-
 JA7FGA 58,300- 53-374- A-
 JA7ERJ 32,292- 46-234- A-
 JA2BVZ 32,058- 39-274- A-
 JA6AFL 29,832- 44-226- A-
 JA2WZ 29,069- 41-237- A-
 JA4ERX 28,200- 47-200- A-15
 JA8EKU 15,390- 38-135- A-
 JA7GDW 14,926- 34-147- A-
 JA2HGA 7614- 27- 97- A-
 JA2FJP 5652- 12-157- A-
 JA2ITH 5400- 25- 75- A-
 JA7EDM 4731- 19- 83- A-14
 JA1JHF 4425- 25- 69- A-
 JA1SKE 2873- 17- 57- A-
 JA8SQ 990- 11- 30- B-
 JA8FBM 552- 8- 25- A-
 JA9BXU 145- 5- 10- A-
 JA9ANO 6- 1- 2- A-
 KA9MF (10 oprs.)
 1,000,890-165-2022-BC-90
 KA7CW (4 oprs.)
 368,550-126-975- C-72

Ryukyu Islands

KR6NR 43,524- 54-269- C-

Lebanon

OD5BA 20,952- 54-131- A- 9

Asiatic Russian S.F.S.R.

UA9FU 22,260- 35-212- B-
 UV9PP 12- 2- 2- A-
 UA9KAI (4 oprs.)
 195,048- 54-1204- A-

Syria

YK1AA 3504- 16- 73- B-10

Israel

4Z4HF 88,306- 67-469- B-13
 4Z4AG 5126- 22- 78- A- 3

EUROPE

Portugal

CT1BH 1,449,819-189-2557- B-
 CT1MO (CT1s MO TD)
 23,822- 43-186-AB- 8

Azores

CT2AT 1,142,854-194-2018-AB-39

Germany

DL4QQ 1,449,726-183-2641- B-
 DL4AP 976,440-158-2060- B-
 DJ6GI 803,773-151-1775- C-
 DL4QP 351,480-116-1010- B-27
 DL2JO 179,118- 93-642- C-20
 DL7LJ 81,000- 40-875- B-22
 DL6WE 79,044- 42-828- A-
 DJ6WX 44,415- 35-449- A-
 DL8MY 25,575- 55-157- B-16
 DL4WN 22,089- 37-199- C- 3
 DL2QB 21,195- 45-157-AB- 6
 DL6WD 8400- 28-102- B-
 DM2ARE 2737- 17- 60- A-
 DL4USN (4 oprs.)
 1,384,944-172-2684- B-75
 DL4FS (DL4s ER FS)
 675,567-131-1779- B-36

Check log: DJ8TA.

Spain

EA1FD 819,060-170-1611- B-60
 EA3QW 351,000-125-936- A-
 EA1Y 139,590- 47-990- B-33

France

F3KW 1,419,744-184-2572- B-
 F9RM 117,180- 93-420- A-
 F2JE 38,001- 53-239- A-
 F5OJ (5 oprs.)
 1,408,850-190-2478- A-

Check log: F5PW.

England

G3IAR 1,262,608-184-2296- B-77
 G2QT 1,156,263-193-1997- A-62
 G3WTV 576,232-136-1113- B-43
 G3XYP 342,468-126-906- B-
 G3KMA 259,584-104-832- A-
 G3UQR 169,905- 47-1205- B-23
 G3CJQ 18,585- 35-177- A-
 G3JOC (G3s IOR JOC LDT
 MPN)
 2,680,509-221-4055- B-90

Check log: G3XQP.

Wales

GW3NWW 1,122,407-167-2241- B-43

Hungary

HA5CQ 68,688- 72-318- A-
 HA5AM 30,240- 40-252- B-
 HA3MB 18,816- 49-129- A-

Switzerland

HB9UD 59,489- 43-461- B-
 HB9UD 3150- 25- 42- B-

Italy

I1BAF 1,778,319-197-3009- B-70
 I1PFL 1,473,155-185-2656- B-
 I1MOL 898,392-164-1826- B-48
 I1BBZ 160,170- 95-562- A-
 I1BH 44,775- 45-332- A-
 I1TAE (5 oprs.)
 2,765,070-210-4389- B-90
 I1CZW (I1s AJ CZW)
 1,307,766-178-2449- B-70
 I1DFE (4 oprs.)
 220,185-105-699- B-30

Jan Mayen

JX3P (4 oprs.)
 160,734- 86-623- A-36

Norway

LA0AD 1,382,832-194-2395- B-38
 LA8RL 74,088- 72-343- A-
 LA3K 26,640- 37-240- A-
 LA4ZB 22,722- 42-183- A-13
 LA4AF 12,540- 31-110- A-13
 LA3BG 7308- 29- 84- B-
 Check logs: LAs 1YM 4R and 90I.

| | | | |
|--|---|---|---|
| Bulgaria LZ1KAA (2 ops.) 1170-15-26- B- | Kaliningrad UA2KBD (5 ops.) 250,170-106-815- B- | VP9MI 345,060-108-1065- B-23 WB2NCS/VP9 59,386- 46- 439- A-16 | Indonesia YB0AAB 236,037-101- 770- B-21 |
| Austria OE2EGL 746,976-124-2008- A-36 | Ukraine UT5KTH 44,415- 45-333- A- UB5KIW 28,602- 42-229- A- UT6LY 4836- 26- 62- A- | Mexico XE1WS 3,754,976-271-4619- B-55 XE1LLS 2,336,605-235-3318- B- | New Zealand ZL1HW 720,168-148-1622- B- ZL1AGO 675,804-199-1132- A- |
| Finland OH4RH 54,000- 72-253- B- OH5VT 10,656- 32-112- B- OH8OW 5808- 24- 81- B- OH2BHU 3120- 20- 52- A- OH5UX (OH5s QX UX UY) 138,471-101-457- B- Check log: OH5SM. | Georgia UF6CW 1215- 15- 27- B- | Nicaragua YN1GLB 1,742,760-200-2820- B- YN1HF 69,296- 71- 326- B- | Western Samoa 5W1AR 342,630-135-846- A-24 |
| Aland Islands OH0NI 305,424-126-808- B- OH0NJ 540- 10- 18- B- 4 | Lithuania UP2WN 648- 9- 24- A- | Jamaica 6Y0A (11 ops.) 4,719,114-281-5598-AB-96 6Y5AK (2 ops.) 1584- 16- 33- B- 1 6Y5LA (2 ops.) 936- 12- 26- A- 1 | SOUTH AMERICA Bolivia CP1HW 1,215,864-156-2598- B-49 |
| Czechoslovakia OK1AGQ 94,764- 53-596- B- OK2DB 19,116- 27-236- A- | Estonia UR2OV 12,180- 29-140- A- | Barbados 8P6CV 8748- 12- 243- A- 5 | Uruguay CX2CN 242,676-107- 756- A- CX1JM 26,028- 36-241- B- |
| Belgium ON5GQ 677,820-158-1430- A- ON5MG 664,242-149-1553- A- ON4XG 441,750-125-1178- B-31 | Rumania YO3ZM 1078- 14- 26- A- | Trinidad 9Y4KK 291,084-127- 764- B-12 | Ecuador HC1TH 4,677,981-263-5931-BC-70 HC1WZ 92,520- 90- 343- B- 6 |
| Denmark OZ1LO 1,249,305-185-2251- B-80 OZ1RH 816,141-163-1670- C- OZ7X 617,580-141-1460- A- OZ3KE 129,360- 88-490-AB-18 OZ4IA 41,004- 68-201- A-15 OZ7HM 6048- 12-168- A- OZ7DX 1632- 16- 34- A- OZ4H 1134- 14- 27- A- Check logs: OZs 1CZ 2LW and 5KF. | Yugoslavia YU1BCD (YU1QBC, opr.) 838,584-152-2011- B-50 YU3EY (YU3s EY TBM) 800,028-142-2075- A-65 | OCEANIA Philippine Islands DU1ZAG 546,558-142-1283- C-26 | Colombia HK3WO 2,418,000-250-3224- B- |
| Netherlands PA0NV 45,630- 65-234- B- | NORTH AMERICA Guadeloupe FG7XL 2,035,870-163-4166- B-68 | Fr. Oceania FO8BS 342,519-127- 899- C- | Argentina LU8DKA 1,523,040-160-3173- - LU2FAO 53,016- 47- 376- B-11 LU6EAR 39,690- 42- 315- B-10 |
| Sweden SM5EAC 1,169,049-179-2177- B-51 SM6CKU 1,001,091-193-1729- B-27 SM5CAK 212,787-111-639- B- SM5GA 75,945- 83-312- B-13 SM5FC 69,498- 78-297- B- SM7ALA 32,154- 46-239- A- SM2COL 1539- 19- 27- B- SM0BDS 1488- 16- 31- A- SM2CSA 231- 7- 11- A- SK6AB (6 ops.) 2,824,038-217-4339- B- SK3BP (4 ops.) 510,825-147-1160- B- Check logs: SMs 4DPB 5CFH and 5DQG. | St. Pierre & Miquelon Is. FP8AP 66,378- 37- 598- A- | Hawaii KH6GPQ 3,587,034-253-4726- B-60 KH6BZF 2,431,395-213-3805- C-65 KH6GQB 461,472-152-1012- B- | Peru OA6BU 914,550-182-1675- C-27 OA4YW 269,985-123- 732-AC-10 OA4BS 43,172- 43- 335- C- 8 |
| Poland SP5CJT 144,780- 95-508- A- SP3PL 68,328- 78-292- B- | Dominican Republic HI8XRM 2,732,975-245-3722-AC-50 | Marshall Islands KX6FJ 896,952-152-1967- C-29 KX6GS 619,084-148-1398- B-27 | Brazil PY7ASQ 1,161,940-130-2980- B-34 PY4KL 641,691-141-1517- B- PY7VKZ 279,756-114-818- B-15 PY1BAZ 241,360-112-750- B-30 PY1CHP 134,950- 93-486- B-26 PY2BGO 48,240- 67-240- B- 7 PY2PH 23,850- 53-150- B- 6 |
| European Russian S.F.S.R. UA1WW 299,766- 94-1063- B- UA1CS 84,624- 48-591- B- UW3BV 53,721- 47-382- A- UA4KHW 34,916- 58-202- B- 3 UA4QM 9984- 32-107- B- UW6LC 3612- 28-129- A- UA1IG 1014- 13- 26- B- UA3KOB 165- 5- 11- B- UA1KBB (2 ops.) 11,414- 26-147- B-12 heck logs: UAs 3DB 3FF 4SH, UVCFD. | Panama HP1JC 1,619,352-252-2142-AB-43 | Australia VK2FU (VK2FZ, opr) 2,103,015-235-2983- B- VK3QV 39,648- 59- 224- A-10 VK4UA 23,436- 36- 217- A- | Venezuela WA3HXR/YV5 1,460,925-215-2265- C-44 YV7AV 967,356-156-2067- B-40 YV5CGT/YV3 964,956-194-1658- B-35 YV5BPG 220,966-134- 550-BC-10 Check logs: YV1SA, K4PHY/YV5. |
| | Alaska KL7WAH 684,930-158-1445- C-14 K4KLC/KL7 221,628- 92- 803- B- W3UEQ/KL7 3195- 15- 71- B- 2 Check log; KL7GJX | Papua Territory VK9RY 1254- 11- 38- B- | Surinam PZICK 362,739-131- 923- B-32 |
| | Puerto Rico KP4AN 287,679-133- 721-AB-16 | Macquarie Island VK0KJ 93,018- 74- 419- B- | |
| | Virgin Islands KV4FZ 5,927,589-303-6521- B-63 | Heard Island VK0WR 26,676- 36- 247- B- | |
| | Canal Zone KZ5NF 2,062,710-205-3354-AC-33 | Fiji Islands VR2DK 1008- 8- 42- A- 2 | |
| | Greenland OX3KM 164,115-105- 521- B-24 | | |
| | Sint Maarten PJ7JC 1,264,368-212-1988- B-33 | | |
| | Iceland TF2WLM 47,850- 58- 275- B- | | |
| | Costa Rica TI2PAS 13,230- 35- 126- B- | | |
| | Bermuda Islands VE3BS/VP9 623,720-155-1342- A-26 | | |



Shown left to right are the gang at ET3USA. Jerry, W4EJP; Dick, WA7LIP and Rosie his XYL; Marguerite, XYL of Milt, W4DIW shown seated at the 14/21 MHz. position; and Danny, WA5UKR. Their contest effort this year netted them the envied title of Africa Continental Champion, both c.w. and phone, for a multi-op entry.