



As a parting gesture before donning military garb, **K1WHS** came up with a superb 20-grand effort and showed his heels to the whole single-op pack. Dave's station, now dismantled, featured homebrew transmitters of 400 and 1000 watts for 6 meters, 500/1000 watts on 2 meters, and 35 watts on 220 MHz. Antennas: 9L at 72' for 6, a 32L quad at 92' for 2, and 11L at 80' for 220. Well done!

Results, September V.H.F. QSO Party

REPORTED BY BOB HILL,* WIARR

AURORA! It sneaked in on little cat feet Saturday evening (Sept. 7) about 2300 GMT and was still pussyfooting around at 0900, ten hours later. From Oregon to Virginia, QSO Party enthusiasts rubbed their mikes and keys in glee as section totals mounted at a dizzying pace. Two-meter c.w. was the place to be if you really wanted to take advantage of the fine condx: "CQ AU" filled the 144-MHz. airwaves from coast to coast, and 2-meter multiplier totals rivaled, and in some cases exceeded, those on 6.

In the Northeast, multiop **W3KWH** piled up 38 sections on 6 and a phenomenal 34 on 2, including such tidbits as **W5HFV** (Okla.), **W0DRL** (Kans.), **W0LCN** (Minn.), and **W0LFE** (Mo.) via the auroral route. Highest aggregate multiop scores were submitted by **W2JKI** (whose multiplier of 73 was also tops), **W1DC/1** (with the most QSOs—and from *Maine*, yet!), and the aforementioned **W3KWH**. The blistering 20,242 points of **K1WHS** paced the whole contest in the single-op category. Three thousand miles to the west, **W7EGN** worked three KL7s in a row on aurora; **K7VNU** and **VE6OH** got two of 'em and **W7FN** one. **K6YNB/6** doggedly kept at it, with no unusual propagation to help, and wound up just short of 200 QSOs to lead his part of the country; **W6YEP/6**, aided by **K6GSS** and **WB6HIL**, led the multiops. In Canada, **VE2SH** held dominion over all singletons; **VE3SAU** was boss multi.

In the central areas, it seemed to be a matter of lots of sections but a dearth of people to work. Some nice multiplier totals were turned in on 50 MHz. by **K9HMB** (33), **WA8SAJ** (31) and

WA8LRE (30); 144 MHz. Midwesterners were able to compile hefty figures, too: **W8IDU** had 29 sections, **VE3BQN** 26, **W8WEN** 25. As for the rest of the country—hang in there, fellas, your turn is coming!

With all those Northern Lights, the higher bands were left in relative darkness. But **K1PXE/1** got 13 mults on 220, **K1JIX**, **K2ACQ** and **W2JKI** had 11 on 420, and **W2OJ/2** made it to 3 on 1215-and-up. Let's not forget these micro bands: there's multiplier gold there just for a little digging.

In brief, we received 335 logs from 60 sections, with 60 single-operator and 9 multioperator awards to be mailed December 15.

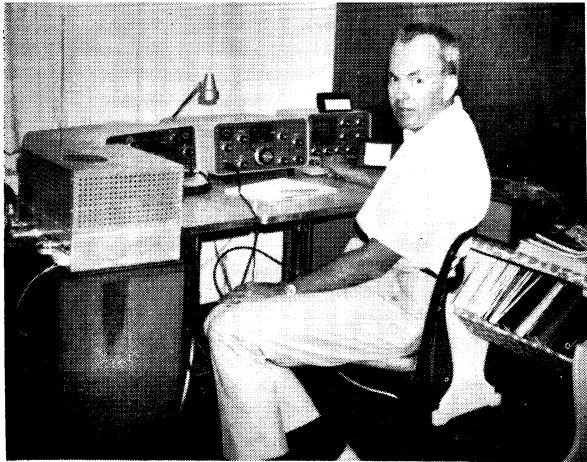
Here's how the participants themselves tell it:

Soapbox

"Very few stations knew how to slope-tune f.m. in." — **K3NYG**. "From my first experiences in a V.H.F. QSO Party a few things have emerged as necessities for contest operation: a v.f.o. (at least on 6), some means of keying the rig (could have worked several sections that I missed during the aurora by that method), higher power, and a better antenna." — **K3RBU**. "Wish the fellows up in W1 would swing their beams down this way—there are hams on the v.h.f. bands in Delaware." — **WN3KFF**. "Activity was lower this contest because of the S.N.J. Hamfest, but the conditions were great. The auroral opening really knocked off the sections and the tropo into W1 was also well above par. A good number of sections were worked on c.w." — **WA3ASL**. "Good auroral opening on 6 Saturday night where we worked several VEs, W1s and W8s on c.w. At times there was a lot of DX on c.w. when nothing could be heard on phone." — **WA3ADN**. "Competition was high and stations were many." — **WA3JWL**. "W2JKI has a fantastic signal in Phila." — **WA3FCZ**. "Worked through Friday night to get 432 going, all for one lousy contact (not even our own section)." — **K3YQS/3**. "Why place a time limit on operations? Most of the mountaintoppers are back home shortly after dark, and what is there left to work? Unless *E*s or *F*2 propagation exists on 6, the long hours are superfluous. Why not cut it back to 30 hours and

* Assistant Communications Manager, ARRL

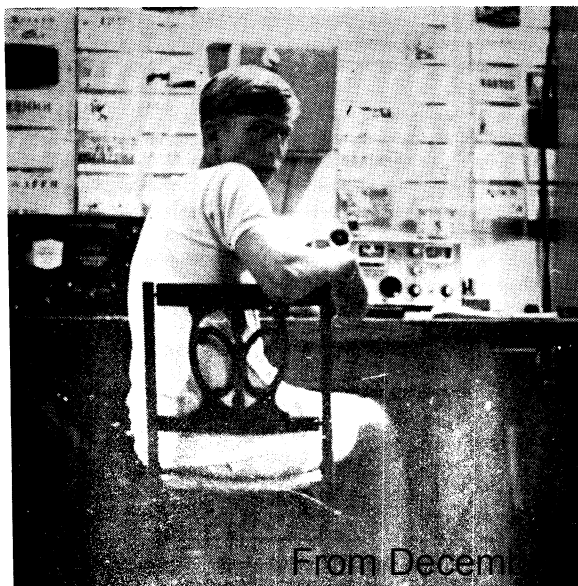
work-all-you-want." — **W3LUL**. "Contest was well timed: aurora Saturday, tropo Sunday; what more can one ask?" — **K3OPB**. "Activity on 220 was pathetic; only heard one other station. Usually hear at least 5 sections." — **WA3EOP/3**. "Terrific aurora — best heard in years. Am not a c.w. operator but jumped in with both feet on key to snag extra sections; enjoyed it and plan to put it to good use in Jan." — **W2EIF**. "Really a ball on c.w." — **W2WGL**. "I like the 28-hour time limit." — **W3BWU**. "Best contest ever! Worked 27 states in 8 call-areas on 144 MHz., 30 states in 8 call-areas on 50 MHz., mostly on aurora. Had about a two-minute-burst m.s. QSO with **W5HFV**, Okla., on 144 at 1230Z Sunday. This time 2M section totals will closely rival 6M totals. Almost all 6-meter QSOs on s.s.b.; perhaps 1% w.b.f.m. or c.w. Two meters was probably 90% c.w., 10% s.s.b. or w.b.f.m." — **W3KWH**. "Could have used some s.s.b. gear for strong aurora opening on 6 meters. Managed to work 3 c.w. stations on aurora scatter by keying the mike button on my SR46A!" — **K9GHR**. "A good chance to get a lot of QSLs." — **WN9ZGF**. "What's the good of holding the contest before the football season if no one shows up on Sunday anyway?" — **WA9WIL**. "The aurora Saturday night saved this contest from being as bad a fiasco as last year's. We went like mad for the first six hours, then sat around all day Sunday." — **W9YT**. "Although activity was quite low in our area, we still had a nice time." — **K4OPJ/4**. "Too bad the contest conflicted with the Findley, Ohio, Hamfest; otherwise I would have operated in it fully." — **K8WKZ**. "That aurora certainly saved the day, as the next day was plain nil. Add to that a couple of locals who decided this was a prime time to test out their RATT gear and covered the entire band with birdies!" — **W8NOH**. "I think that because of the 'wild' aurora on 6 and 2 everyone seemed to stay away from 432 to get those easy multipliers." — **WA8VHG**. "Except for the aurora, conditions were terrible." — **W8IDT**. "Next fall we'll beat **WA8PIE** or bust!" — **WA8JXE**. "Very good aurora. Wish I could have operated more than 9 hours, but had to go to a hamfest." — **WA8LRE**. "Conditions on 6 were very good on aurora, and also on Sunday there was a very short *E_s* opening to the southwest." — **WA8SAJ**. "Good aurora! but days for fixed-frequency operation have already been numbered." — **W8WEN**. "The aurora was just made for c.w. contacts." — **WA8KPN**. "My first v.h.f. contest; I had been on the air for a little over a week." — **WA8YHN**. "Many phone stations were so eager to work sections that they went below 50.1 in doing so." — **WA8MTS**. "Interesting and fast-moving." — **WA8UZP**. "A lot of fun." — **W8LKY**. "Tried to transmit simultaneously on 144 and 220, but my own TV set looked at both incoming signals and mixed them down to Channels 4 and 5." — **K2DNR**. "Very interesting contest. Looking at the comments about the June contest: those who grumble are very low scorers and snicker at people who put a lot of time and effort and know-how into a contest. That's the name of the game." — **W2JKI**. "Three weeks after the contest I still had a buzz

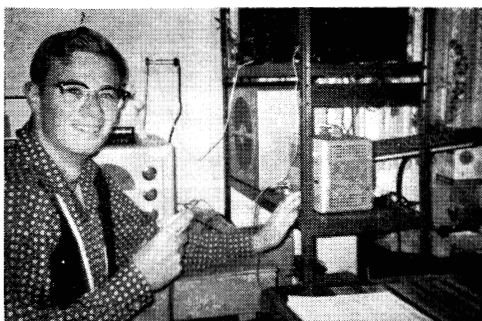


A fine 50-MHz. effort from **W7FN** turned out to be the top single-band score in the West. Don (formerly **W6PUZ**) is making a determined effort to stimulate more v.h.f. activity in Washington.

in my ear: could it have been aurora? Highest section total ever on 2." — **K2RTH**. "Worked all my 2100 points on 2-meter a.m.!" — **WB2ESD**. "If only we would use a bit more of the bands, like from 144 to 145." — **W2KXG**. "In my last hour of operation, heard many 3s, 1s and some 4s, but could not work them because they had finished the contest and were engaged in local ragchews." — **WB2GWU**. "I do not like the new 28-hour rule, as it leaves the bands pretty dead on Sunday night." — **WB2YYV**. "Choice of dates showed great foresight — thank you!" — **WA2EBT**. "Heard reports that we were being heard in W1 area on 1296 but couldn't hear anyone there." — **W2OJ/2**. "Combination of magnificent location and high power helped us amass our score. Unfortunately, we were not able to spend all our time operating; over 5000 people came up to our tower to see what was going on!" — **WB2GKE/2**. "Operated 432 for the first time — found it very profitable." — **K2DEL/2**. "Heard 35 sections during aurora, including NTex, Okla., NMex and La. Wish we could have worked them all!" — **W0EKB**. "Was on vacation and got home late Saturday night at the very end of the aurora opening." — **W9ECV/0**. "Aurora produced strong signals here from Montana to New York." — **W0UJK**. "Made my first Kansas contact but couldn't find anyone in Iowa or further east. You guys should point your beams thisaway." — **WA0TTW**. "Section totals on all bands were fantastic. This will be the last contest for a while, as we have dismantled the station and stored it away for later use when my brother and I get our military obligations out of the way." — **K1WHS**. "A lot of stations were operating portable during this Party. They deserve a lot of credit for all the effort and for all the multipliers they provided. Again it was c.w. that brought home the bacon." — **W1DZA**. "The aurora was fine, but 30 watts a.m. just couldn't make it." — **W1DYJ/1**. "This 28-hour consecutive operating period is for the birds! It gives an advantage to the multiop stations and gives the single op no chance to sleep. If you had two 14-hour segments, the single op could operate when conditions are good." — **WN11QJ**. "Many stations still refuse to believe I'm running only 300 milliwatts carrier output." — **WIENZ**. "Da zdravstvet u.k.v.!" — **KL7ELA/W1**. "Couldn't ask for better weather. A good time was had by all." — **K1PXE/1**. "Had a great time despite Murphy. Nice to hear and work **W1AW** on both 6 and 2." — **K1AGB**. "Was amazed to hear at least 30 sections on six." — **W1QXX**. "Hampered by no c.w. on 2." — **WA1FCD**. "Great to be back on v.h.f.! Worked some d.c. bands while in W6, but can't compare with 6, 2, 220, etc. All 2-meter QSOs were on c.w. — the only way to fly!" — **K1OYB**. "I think anyone who wants to work the whole contest should be allowed to." — **K1FTG**. "Seems as though we nearly always have some kind of propagation during those things. Boy, it's hard to keep the 'balanced' part of the Amateur's Code

Solo-banding on 6 with a pair of 4-400s and stacked 5L beams at 60 feet, **WA8LRE** socked away 30 sections and eased into the top W8 position with plenty to spare — and in just nine hours, too!





Running 5 watts to a Heath HW-30 and a ground-plane, Colorado's **WN0TML** was the one and only Novice entrant west of the Mississippi. C'mon, WNs, there's much fun to be had on 2-meter c.w. during one of these affairs. (Read Soapbox and see.)



Wayne, **K6YNB/6**, ran 175 watts p.e.p. on 6, only 20 watts on 2, had average antennas at average heights—and still managed 198 QSOs, 12 multipliers, and by far the biggest tally from the Wild West. Here he points to three portable locations in three different sections from which he's operated in recent contests. (How 'bout trying Mexico next, Wayne?)



"One, two, three, four—whew, all still there," is what **VE3ABG** might be thinking after a sizzling session on 2. Piloting **VE3BQN** during the Party, Joe chalked up 26 sections on 144 MHz.

during the heat of battle." — **K1ABR**. "Would like to suggest investigation into the possibility of a 2-hour addition to the 28-hour period for those single-ops who attend church." — **WA1GFG**. "Best contact on aurora: **VE4MA**." — **K1GYT**. "It was a big thrill to give many stations their first Vermont QSO, and we only regret we weren't able to work everyone who called us." — **K4GGI/1**. "Aurora Sat. night really made everything worth while. We sweated Ontario, only to work flocks of them during a brief tropo opening over Lake Ontario Sunday afternoon." — **WA2PTS/1**. "The 220- and 432-MHz. bands alone were busy enough to occupy almost the full contest period enjoyably." — **K1JIX**. "There was at least one portable on every sizeable bump in New England and New York State, from the sound of 6 and 2 from my favorite portable site: Mt. Everett, in the s.w. corner of Massachusetts." — **W1HDQ/1**. "The three Alaskans appeared to be undistorted trans-aurora." — **W7EGN**. "Most exciting event was hearing **W7FN** signing with **KL7FNL** and not being able to hear the **KL7**!" — **W7JRG**. "In spite of a low score we thoroughly enjoyed working the contest from 9500-foot Steen's Mt. in s.e. Oregon (an 800-mile round-trip). Wx was great and signals good, but there just weren't very many people on." — **K7AUO/7**. "Boy, what a difference lack of *Es* makes. Contacts are pretty scarce from this part of the country. The aurora session of Saturday evening was quite a thrill for this displaced California. Called CQ on c.w. and raised **KL7FNL** at 0714Z. Doing my best to generate more enthusiasm in the gang around this area." — **W7FN**. "Aurora first observed 072312 GMT; first contact **VE6OH**; my log entries give the rest of the details." — **K7VNU**. "Noticed increased activity on 220 and 432." — **WA7-EHE/7**. "Just to show **KH6BZF** that a v.h.f. contest in Hawaii can be won having worked more than one station!" — **KH6EQF**. "Due to temp. inversion, signals from **SVJ** were well over the usual contest reports of 'S9 OM.' Sent log sheets to **WA7GXM** in Carson City, much to the delight of the Pacific Division boys as Hal had 6 sections from the Nevada side of the Sierra." — **W6DOR**. "About the normal amount of activity except for the scarcity of hill-toppers. Some good mountains went begging this year." — **W6TEE**. "We didn't get an opening on 50 MHz., and this was a little disappointing; we could have had a much better score, as we had an excellent location." — **W6KDJ/6**. "Such lousy conditions! The aurora did not extend this far south." — **K4GL**. "Surprised to hear so many brass-pounders on." — **WA4ZSF/4**. "No skip equaled no multipliers equaled very few points." — **WA6PHZ/6**. "Lots of scatter and noise—few locals—hardly worth the time." — **K4WHW**. "My thanks to the EFla OMs for their patience with a newcomer." — **WB4KUN**. "We almost had Cuba in a c.w. QSO on 2 meters but couldn't make it two ways. Darn, we could have used the multiplier with so few stations on locally and the band closed." — **WB4HML/4**. "Except for a heated race among local Novices there was very little contest activity here. As a result, about three-quarters of my QSOs consisted of raising a non-participating station, asking him his QTH, and then telling him what ARRL section he lived in!" — **K6YNB/6**. "Slim pickings." — **WA6FJJ**. "Two-meter conditions consistently good." — **WB6TFC**. "Recommend that the high-band multipliers apply both to contact and section." — **K6OKC**. "Made contacts via m.s., iono-scatter, aurora, tropo and ground-wave. I noted no *Es*." — **W5WAX**. "Condx poor, but happy to work Ark. on ground-wave for first time with my 15 watts s.s.b." — **K5CYK**. "Imagine the utter frustration of having a 90%-completed 2-meter kw and not being able to get out on aurora with 20 watts." — **VE2DFO**. "432 very inactive in this area, possibly due to the aurora on 144." — **VE3EVW**. "The c.w. notes were from coarse aurora tone to bursts of T9. The **KL7s** were worked s.s.b. with as clear transmissions as off *E* except for the last few minutes. Absolutely no stations from the east of me came through." — **VE6OH**. "Activity better than expected. Working **K7AUO/7** in the s.e. corner of Oregon (550 mi.) made the contest for me." — **VE7BQH**.

SCORES

In the following tabulation, scores are listed by ARRL divisions and sections. The top single-operator scorer in each section receives a certificate award. Multiple-operator scores are shown at the end of each section tabulation; in sections where at least three such entries were received, the top multioperator scorer receives a certificate award. A single asterisk indicates Novice award winner; two asterisks indicate Hq. staff member, ineligible for award.

Columns show final score, total number of contacts, section multiplier, and bands used. A represents 50 MHz; B, 144 MHz.; C, 220 MHz.; D, 420 MHz.; E, 1215 MHz. and above.

ATLANTIC DIVISION

Delaware

W3CGV 2128-68-28-ABCD
W3HWC 320-32-10-B
K3NYG 220-65-12-AB
K3RBU 110-22-5-A
WN3KFF 4-4-1-B

Eastern Pennsylvania

W3ARW 4598-98-38-BCD
W3ASL 2948-134-22-AB
W3IAO 2740-137-20-AB
W3ADN

1972-116-17-AB
W3ETB 1328-83-16-AB
W3IOB 1275-75-17-AB
W3HIT 1035-115-9-AB
W3DEQ 800-80-10-A
W3JWL 280-65-12-AB
W3FCZ 160-40-4-A
K3MTK/3 (6 ops.)
18,524-421-44-AB
K3CSG/3 (8 ops.)
5874-167-33-ABC
W3SK/3 (5 ops.)
1,424-174-26-AB
K3YQS/3 (4 ops.)
3116-163-19-ABD
W3LP (W3s GFN JUZ,
W3AFB)
2730-130-21-AB

Maryland-D.C.

W3LUL 2781-103-27-AB
K3OPB 1558-82-10-B
W3HEN 968-88-11-B
W3MNE 714-51-14-AB
W3GN 658-47-14-B
WN1JHE/3
462-66-7-B
W3PGA/3 (7 ops.)
12,742-267-46-ABD
WA3JGI (K3s NXU VIR,
WA3JGI)
4082-156-26-ABD

WA3EOP/3 (WA3s EOP
FCN) 2054-158-13-AB
K3ARN (4 ops.)
1364-62-22-B
WN2HBL/3 (WN2s EWP
HBL) 124-31-4-B

Southern New Jersey

W2EIF 11,330-181-55-ABCD
K2BWR 3360-96-35-AB
WB2WVC 468-52-9-B
WB2YEH 240-30-8-A
W2ZQ (WB2LJ, K3CPF)
4770-265-18-AB
WB2UIM (WB2s PWI UIM)
10-5-2-AB

Western New York

W2CNS 12,780-198-60-ABCD
WA2TEY 1620-93-18-AB
K2SJB 990-54-18-ABC
W2WGL 968-51-19-B
WB2KYQ 912-57-16-B
K2ACQ 616-28-11-D
K2PKK 450-33-15-AB
WA2KND 360-40-9-AB
WA2UJM/2 (K2ODL, WA2s
CJK UJM)
15,517-256-59-ABC
W2OW (15 ops.)
3868-190-44-ABC
WB2LZD/2 (WB2s BBS
LZD) 1056-58-12-A
WB2MXS/2 (WB2s MXS
MXT) 200-40-5-A

Western Pennsylvania

W3BWU 2208-96-23-AB
K3QMX/3
1702-74-22-B
W3DJM 440-44-10-A
WA3HTD 240-48-5-AB
WN3KQA 132-44-3-B
WA3KYC 129-43-3-B
W3KWH (5 ops.)
34,920-485-72-AB



The splendid isolation of 9500-foot Steen's Mt., Oregon, provided this setting for the **K7AUO/7** gang: K7s BEU IUN TTK TPO WKT, W7s ADV HUY RPT SMV VOK and VRM.

K3HKK/3 (7 ops.)
18,144-277-63-ABCD
K3JRO/3 (6 ops.)
3816-159-24-AB

CENTRAL DIVISION

Illinois

K9HMB 6930-210-33-A
WA9JYR (G3PAC, opr.)
1170-117-10-AB
K9GHR 906-151-6-AB
W9GWT 408-58-7-AB
WA9FXH 360-72-5-B
WN9YZX 312-78-4-B
WA9RIJ 300-75-4-AB
WA9ZHF 201-67-3-B
W9DJZ 192-48-4-A
K9VKF 88-44-2-B
K9DTB 44-22-2-AB
K9DNW 32-32-1-A
WN9ZGF 28-28-1-B
WA9CUK 11-11-1-A
K9YHB (K9RHY, WA9s
EJD QH)
1722-123-14-AB
WA9QAD (WA9QAD,
WN9YTX)
153-51-3-B

Indiana

WA9QXZ 400-40-10-A
WA9UUE 186-31-6-A

Wisconsin

WA9WIL 1710-95-18-A
WA9MCC 407-37-11-B
WA9EZZ 72-12-6-A
W9KHH 6-3-2-AB
W9YT (6 ops.)
7872-180-41-ABE

DAKOTA DIVISION

Minnesota

W9QIN 656-41-16-A
K0PWR 341-31-11-A
W9LCN 240-20-12-BD
W9LEB 220-19-11-BD

DELTA DIVISION

Louisiana

W5MCC 160-32-5-ABD
W5JFB 24-8-3-B

Mississippi

W5AO 136-17-8-B

Minimum Number of Sections						Minimum Number of Sections						Minimum Number of Sections						Minimum Number of Sections					
20 15 4 3 2						20 15 4 3 2						20 15 4 3 2						20 15 4 3 2					
Band (MHz.)	50	144	220	420	1215	Band (MHz.)	50	144	220	420	1215	Band (MHz.)	50	144	220	420	1215	Band (MHz.)	50	144	220	420	1215
K1ABR	18	20				WA2PTS/1*	21					W2WGL		19				W8AEC		23			
K1AGB	21	22	10			K4GGL/1*	10	12	8	7		WA2WZP	25	14				WA8BCA/8*	26	15	4		
W1ALE	2	3	7	5		K2ACQ				11		K3ARN*	22					W8CCI*	29	10			
W1AW	17	20				W2AQT	22					W3ARW	22	9	7			W8IDT		23			
W1AZK		21	6			K2ARO	15					W3BWU	21	2				W8IDU		29			
K1BUB/1*	21	15	11			K2BWR	22	13				W3CGV	18	5	1	4		WA8LRE	30				
W1DC/1*	26	18	9	10	2	W2CNS	27	24	4	5		K3CSG/3*	12	13	8			K8LZF		16			
W1EUJ	21	17		6		K2DEL/2*	22	17		4		K3HKK/3*	30	25	4	4		WA8PIE		22			
K1GYT	28	7				K2DNR	9	19	12			K3JRO/3*	20	4				WA8SAJ	31				
W1HPM*	14	11	7			WA2EBT	22					W3KWH*	38	34				W8WEN		25			
K1HTV		24				W2EIF	22	19	8	6		W3LUL	7	20				K8WKZ	29	6			
WA1IED*	13	19				WB2FKJ/2*	18	20				K3MTK/3*	25	19				K9HMB	33				
WA1IOX*	23	22	4		1	WB2FXB	20					K3OPB	19					VE2RM*		22			
K1JIX		8	9	11		WB2GKE/2*	24	22	2	7		W3PGA/3*	25	17		4		VE2SH	25	19		6	
W1JJO	9	15	7			W2JKI*	28	22	12	11		K3QMX/3	23					VE3BPR	20	18		6	
WA1JTK		17		6		WB2KYQ	16					WA4CGA	14	9		3		VE3BQN		26		3	
W1LMZ		17				W2OJ/2*	20	19	8	5	3	W4FJ		6		6		VE3CUA	25	4			
K1PXE/1*	16	22	13			W2OW*	22	17	5			K4QIF	20					VE3DSQ		18			
W1QVF		4		10		K2RTH	25	24	11			K4SUM	9	15		6		VE3EVW		16		2	
W1QXX		16	9	6		WB2SIH	10	17				W4VZR	15					VE3SAU*	26	9			
K1WHS	25	24	9			W2TND	16	20		1		W4ZJA/4*	10	7		3							
K1YLU/1*	22	13	9	8		WA2UJM/2*	28	27	4			WA4ZSF/4*	27	2									
K1YON			11	5		K2VMR*	32	20				WB6KAP	9	6	1	3							
W1YTW	5	15	6			WA2VTR				3	2	K6OKC		7		4							

*Multioperator Station

Tennessee

WA4CGA 2080-80-26-ABD
WB4HLI 10-8-2-A
WA4YCL/4 WA4s HQ
PWO YCL)
1695-113-15-AB
WA4ZTH (WA4s ZTH ZWA
ZZL) 308-14-7-AB
W4ODR (WB4DFP)
WA5ERP, WA8FLK)
259-37-7-AB

GREAT LAKES DIVISION

Kentucky

WA4CQG 650-50-13-A
WA8TYF/4
459-27-17-AB
K4QPI/4 (K4s QPJ WYN)
2162-94-23-AB
W4VQA (4 ops.)
1710-90-19-AB

Michigan

K8WKZ 4165-119-35-AB
W8IDU 2929-101-29-B
WA8PTE 2552-116-22-B
W8NOH 2100-100-21-AB
W3TBF/8
1634-86-19-A
WA8REM
1488-93-16-AB
WA8VHG
1440-71-20-ABD
W8IDT 1288-56-23-B
K8HEG 980-70-14-B
K8LZF 512-32-16-B
K8CBN 363-30-11-A
WA8STV 144-36-4-AB
W8YYW 42-14-3-B
WA8JXE (WA8s JQA JXE,
WB8BYJ)
312-52-6-B

Ohio

WA8LRE 6270-209-30-A
WA8SAJ 437-141-31-A
W8WEN 2475-99-25-B
WA8KPN
1320-88-15-A
WA8STX 672-96-7-AB
WA8TTS 623-89-7-AB
WA8IKN 248-31-8-AB
WA8YHN 117-39-3-A
WA8MTS 110-22-5-A
WA8YOR 80-40-2-A
W8NYXU 52-26-2-B
WA8UZP 10-10-1-A
W8NAFP/8 10-10-1-B
WA8BCA/8 (5 ops.)
15,120-336-45-ABD
W8CCI (5 ops.)
12,714-326-39-AB
WA8VVP (K8IE, WA8VVP)
380-76-5-A
W8LKY (5 ops.)
360-30-12-AB

DIVISION LEADERS

Single Operator

W2CNS Atlantic
K9HMB Central
W0QIN Dakota
WA4CGA Delta
WA8LRE Great Lakes
WA2WZP Hudson
W0PFP Midwest
K1WHS New England
W7FN Northwestern
WB6KAP Pacific
K4SUM Roanoke
K1WYS/0 Rocky Mountain
K4WHW Southeastern
K6YNB/6 Southwestern
W5WAX West Gulf
VE2SH Canadian

Multioperator

W3KWH
W9YT
.....
WA4YCL/4
WA8BCA/8
W2JKI
W0EKB
WIDC/1
WA7EHE/7
W6YEP/6
WA4ZSF/4
WA0PHZ/0
WB4HML/4
W6IAK/6
.....
VE3SAU

HUDSON DIVISION

Eastern New York

K2DNR 6680-143-40-AB
W82SH 3024-112-27-AB
K2ARO 1590-106-15-B
WB2FXB
1440-72-20-B
WA2KUL 580-29-20-AB
WA2VTR 180-15-5-DE
WB2WVY 6-2-1-E
W2JKI (10 ops.)
43,362-555-73-ABCD
WB2FKJ/2 (5 ops.)
11,172-294-38-AB

New York City-Long Island

K2RTH
13,320-205-60-ABCD
WB2YZV 3486-166-21-AB
WB2ESD 2100-150-14-B
WA2ZPX 1292-76-17-AB
WA2BUS 784-47-14-ABCD
K2RLW 729-81-9-AB
W2KXG 621-69-9-B
WB2UZU 459-51-9-B
WB2GWU 405-45-9-AB
W2TUK 371-53-7-B
WA2DSL 325-65-5-B
WA2DPF 250-50-5-B
WB2DIJ 180-20-9-A
WB2YYV 180-45-4-B
W2NDQK 42-21-2-B
K2VMR (9 ops.)
20,696-398-52-AB
W2VA/2 (WB2s DBA DIN
MZE) 8190-270-30-ABCD

Northern New Jersey

WA2WZP
13,689-351-39-AB
W2TND 7437-201-37-ABD
WA2EBT 3464-157-22-B
W2AQT 2596-118-22-B
WA2BLB 1022-73-14-AB
WB2LDE 416-52-8-B
W2CVW 220-20-11-AB
WA2CUE 92-23-4-B
W2NEBW 54-18-3-B
W2OJ/2 (7 ops.)
31,240-510-55-ABCD
WB2GKE/2 (11 ops.)
29,755-512-55-ABCD
K2DEL/2 (9 ops.)
19,006-435-43-ABD
WB2WWB (4 ops.)
4094-178-23-AB
WB2MFD/2 (9 ops.)
3066-146-21-AB
WB2DME/2 (WB2DME,
WN2s GHO GLT)
441-40-9-AB

MIDWEST DIVISION

Iowa

W0PFP 390-26-15-A
W0EKB (K9MBC, W0EKB,
WA0ROM)
810-54-15-A

Kansas

W9ECV/0 264-22-12-A

Nebraska

W0UJK 187-17-11-A
WA0TTW 40-20-2-B

NEW ENGLAND DIVISION

Connecticut

K1WHS 20,242-338-58-AB
W1AW (K1ZND, opr.)**
8325-225-37-AB
K1HTV 3408-142-24-B
W1DZA 2760-138-20-AB
W1HUE 1702-74-23-AB
W1DYJ/1
1494-83-18-AB
W1HSD* 979-89-11-B
K1YON 896-29-16-CD
K1KKK 804-67-12-AB
W1QVF 700-50-14-BD
W1HJQ 450-50-9-B
W1ENZ 423-47-9-B
W1HJPP 26-13-2-B
K1PXE/1 (9 ops.)
24,735-445-51-ABCD
W1IOX (8 ops.)
14,900-290-50-ABCD
W1HED (4 ops.)
4544-142-32-AB
K1AU/1 (K1AU,
W1HXX)
3300-150-22-AB

K1TKJ (K1s PUG TKJ)
2375-125-19-A
WA1GTP (WA1s EDJ GTP)
253-20-11-ABCD
W1NJYU/1 (4 ops.)
186-31-6-B
W1HOL (WA1s HOL JCX)
56-14-4-AB

Eastern Massachusetts

K1AGB
10,759-182-53-ABCD
W1EJJ 8140-174-44-ABD
W1QXX 945-95-31-ABD
W1ADPP
2185-115-19-AB
W1AFCD 1577-83-19-AB
W1DOW 1095-73-15-AB
W1LMZ 493-29-17-B
W1AETC 370-37-10-AB
W1HHK 231-33-7-B
W1AGDR 180-30-6-A
W1MX (W2LOX, opr.)
158-22-7-BC
W1CTR/1 130-26-5-B

Maine

W1YTW 2600-100-26-ABCD
K1OYB 568-29-15-AB
W1GKJ 350-25-14-A
W1DC/1 (13 ops.)
41,730-588-65-ABCD

New Hampshire

W1IJO 6231-183-31-ABCD
W1JTK 2300-89-23-BD
W1AZK 1971-64-27-BC
W1ALE 765-28-17-ABCD
W1MAS 630-42-15-AB
K1FTG 128-16-8-AB
W1AIDC 100-20-5-A
W1HPM (6 ops.)
8128-241-32-ABCD

Rhode Island

K1ABR 5282-139-28-AB
W1AGF
4136-188-22-AB
K1TPK 3586-163-22-AB
K1JSG 611-47-13-AB
W1REK 156-35-7-AB
W1CPC 210-30-7-A

Vermont

K1GYT 6346-167-38-AB
K4GGI/1 (K4GGI,
WA5IOI, K9AQP)
3,020-121-37-ABCD
WA2P'TS/1 (WA2s KZV
PTS) 3906-186-21-B

Western Massachusetts

W1HNN
3640-130-28-AB
K1HJX 3052-62-28-BCD
K1ULZ 1078-77-14-AB
W1UWX/1
297-27-11-A
W1HDQ/1**
225-25-9-AB
W1UCB 200-20-10-AB
W2NG/1 96-12-8-A
W1TTL 35-7-5-A
K1YLU/1 (10 ops.)
22,672-400-52-ABCD
K1BUB/1 (6 ops.)
11,130-211-47-ABC
W1JVS/1 (K1VPS,
W1NBT, W1JVS)
4378-199-22-AB

NORTHWESTERN DIVISION

Montana

W7EGN 150-25-6-A
W7JRG 56-8-7-AB

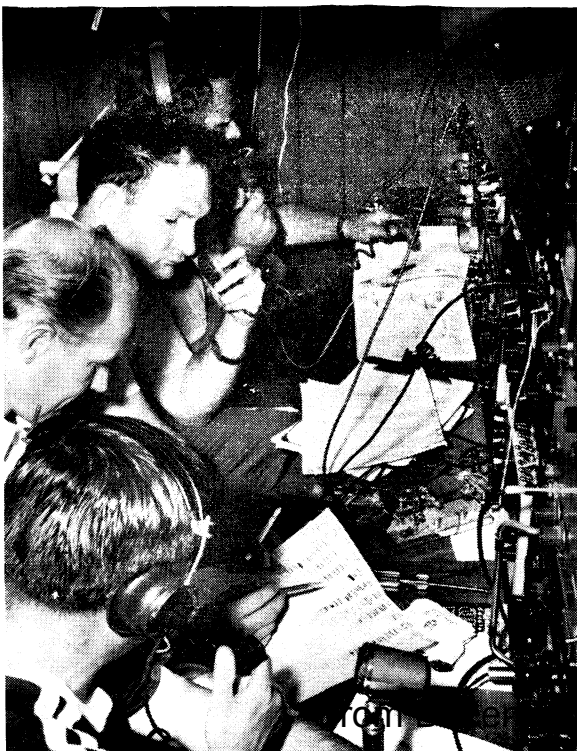
Oregon

K7GWE/7 670-67-10-ABCD
K7JZP/7 552-69-8-AB
W7TYR 205-39-5-ABCD
W7AWJ 96-24-4-AB
K7AUO/7 (11 ops.)
270-27-10-AB

W2JKI & Co. ground out the number-one score (43,362) and the biggest overall multiplier (73) in the Party. (Front to rear) WA2DND, WB2VLR, WA2JWO and W2JKI are observed methodically adding points to the score; other ops were K2AXX, W2DEG, WA2s SPL VGA VRN and VRQ.

QST for

1968 QST © ARRL



These guys aren't really as ferocious as they look, but their signals are. Hardly a v.h.f. contest goes by without big scores from some or all of this sextet: (left to right) **K2RTH, K2HLA, W1VTU, W1MEH, W1JSM** and **K1ABR**. Manning the camera was host **K1HTV**, who's been known to work a few himself.



Washington
W7FN 923- 71-13-A
WA7BTG 320- 40- 8-AB
K7VNU 252- 36- 7-A
K7YMW/7 22- 11- 2-A
WA7EHE/7 (K7s IEY MQF, WA7EHE)
 464- 58- 8-AB

PACIFIC DIVISION

East Bay
WA6BGG/6
 190- 38- 5-B

Hawaii
KH6EQF (K7DTH, opr.)
 56- 28- 2-AB

Nevada
WA7GXM 90- 15- 6-A

Sacramento Valley
WB6NTL 384- 45- 8-AC
W6DOR 216- 38- 6-A
WA6CXB 135- 27- 5-B
W6TEE 92- 23- 4-ABD
W6KDJ/6 (K6TMW, W6KDJ, WA6RUQ)
 726- 64-11-ABC

San Joaquin Valley
WB6UYG 468- 36-13-AB
W6YKS 50- 10- 5-AB
WB6UHK 2- 2- 1-A
W6YEP/6 (K6GSS, W6YEP, WB6HIL)
 2091-123-17-AB

Santa Clara Valley
WB6KAP 1254- 61-19-ABCD
WB6CKT 890- 89-10-AB
WB6WLE/6 (4 oprs.)
 215- 43- 5-B

ROANOKE DIVISION

North Carolina
K4YYJ 324- 27-12-B
K4DFI 51- 17- 3-B
K4GHR 51- 17- 3-B
K4PXU 36- 12- 3-B
W4BNU 24- 12- 2-B
W4PAR/4 (4 oprs.)
 2046- 93-22-AB
K4GHR/4 (K4s DFI GHR)
 75- 15- 5-B

South Carolina
K4GL 252- 18-14-AB

Virginia
K4SUM 4588-129-31-ABDE
K4QIF 1160- 58-20-B
W4VZR 825- 55-15-B
W4FJ 324- 17-12-BD
WA4ZSF/4 (WA4s LPR ZRP ZSF)
 4872-168-29-AB
W4ZJA/4 (8 oprs.)
 2280-108-20-ABD

West Virginia
W8AEC 1748- 76-23-B
K8WVP 403- 31-13-AB
W8SP/8 (12 oprs.)
 360- 45- 8-AB

ROCKY MOUNTAIN DIVISION

Colorado
K1WYS/0 200- 50- 4-AB
WN0TML 14- 14- 1-B
WA0PHZ/0 (WA0RFA, WN0s VEO VGH)
 80- 40- 2-AB

Regarding the contest operating period, which do you prefer:

- 1) The present 28-consecutive-hours method, or
- 2) Two segments of 14 consecutive hours, or
- 3) Another way?

PLEASE LET US KNOW! VOTE TODAY!

New Mexico
W5IXR/5 22- 11- 2-AB

Utah
K6DLY/7 3- 3- 1-B

SOUTHEASTERN DIVISION

Alabama
K4WHW 87- 29- 3-A

Eastern Florida
WA4VYP 34- 34- 1-A
W4OJU 32- 32- 1-A
WB4KUN 22- 22- 1-A
WB4HIP** 21- 21- 1-A
WB4HML/4 (WB4s FTE HML JIM)
 102- 51- 2-AB

Georgia
W4ISS 12- 4- 3-AB
K4YZE 10- 10- 1-B

SOUTHWESTERN DIVISION

Arizona
WA7JSB 14- 14- 1-A

Los Angeles
K6YNN/6 2376-198-12-AB
WB6PKA 1610-115-14-AB
WA6FJJ 136- 34- 4-B

Santa Barbara
K6OKK 946- 86-11-BD
WB6YUJ 200- 50- 4-B
W1LXE/6 72- 12- 6-A

WEST GULF DIVISION

Northern Texas
K5IVB 180- 36- 5-A
W5BWV 38- 19- 2-A
W5JWJ 9- 9- 1-A

Oklahoma
W5WAX 450- 30-15-AB
WA5OUU 105- 35- 3-AB
WA5TVY 58- 29- 2-AB
W5LOW 34- 17- 2-AB
K5CYK 4- 2- 2-A

Southern Texas
WA5TXI 186- 31- 6-A

CANADIAN DIVISION

Quebec
VE2SH 10,100-194-50-ABD
VE2DFO 216- 18-12-A
VE2BMH 9- 9- 1-A
VE2RM (4 oprs.)
 3982-181-22-B

Ontario
VE3CUA 4756-164-29-AB
VE3BPR 4576- 93-44-ABD
VE3BQN (VE3ABG, opr.)
 4147-134-29-BD
VE3DSQ 1764- 98-18-B
VE3CAF 630- 42-15-A
VE3EVW 540- 30-18-BD
VE3DNR 408- 68- 6-B
VE3CWN 160- 40- 4-B
VE3AQJ 36- 18- 2-B
VE3AQT 30- 15- 2-B
VE3SAU (7 oprs.)
 5005-143-35-AB

Alberta
VE6OH 144- 24- 6-A

British Columbia
VE7XF 128- 32- 4-A
VE7BQH 84- 21- 4-BD
VE7BNO (VE7s BDJ BNO)
 72- 18- 4-BD

QST



From the shack atop Rigaud Mt., **VE2RM** (multiopped by **VE2s ALE BU DEA** and **ZA**) cut a 22-section swath on 144 MHz. **VE2BU** is depicted turning the **SB-401** driving a pair of **4CX250Bs** to a 50'-high Long John.