

SEPTEMBER VHF QSO PARTY RESULTS

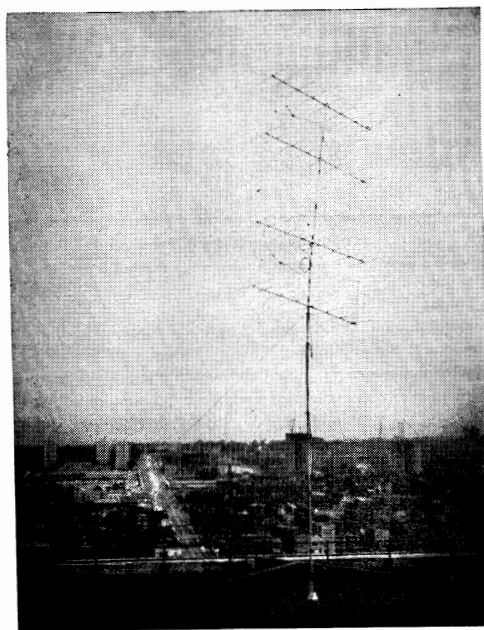
COMPILED BY ELLEN WHITE,* W1YYM

WELL, it sure wasn't anything like the June event! This pretty well sums up the September 9-10, 1967, ARRL VHF QSO Party. A total of 344 entries was received which, though below the June contest, was above that of last September when 310 participants reported their results.

The pickings were particularly slim in the western areas and a special hand to those way-out-west hilltoppers who tried hard to spark interest in the world above 50 Mc.

As a direct result of numerous comments by contest participants the ARRL Awards Committee has met and voted their approval of several changes. The first is purely an editorial treatment of the score listings so that single-band section high scorers will be shown more

* Deputy Communications Mgr., ARRL.



The elevation of the antenna here is only 30 feet. Oh yes, that's on top of a 21-story building! OM G3PAC/W9 single-operated the I.I.T. **WA9JYR** club station in Chicago catching a couple of nice 2-meter openings and topping the Illinois section in a two-band effort. Eric got a chuckle listening to the stations who couldn't convert local standard to local daylight time. Whew, we hope we fixed that one for 1968!

prominently in a bolder-face type (we'll try that one on for size this time!). We did discuss single band *awards* but they just aren't possible to handle, and maintain the standards of promptness and quality we now can supply. How then can we give recognition? It seems obvious that the best all-around performer, devoting the time and ability to the task, should be eligible for the section award. In most cases that versatile performer will top the section listing and qualify for the certificate. Let us know, however, how you like the reporting style shown in the score tabulation and if you feel that this helps to supply that special boost to the single-band entrant.

The other subject was a direct result of a hilarious exchange of letters with moonbouncer W3GKP. In a superbly written petition Bill adroitly pointed out that Public Law 89-387, by act of Congress, states that (in effect) daylight savings time does become the standard time of most zones (covered by the state-wide law). This promptly brought to a head a decision to simplify the starting and ending times of the June and September VHF QSO Parties so that they may be expressed in terms of GMT. What we came up with, on the advice V.H.F. Editor, W1HDQ, should simplify things for everyone!

Operation may be in any continuous 28-hour period beginning no earlier than 1900 GMT Saturday and ending no later than 0600 GMT Monday (starting time on the hour).

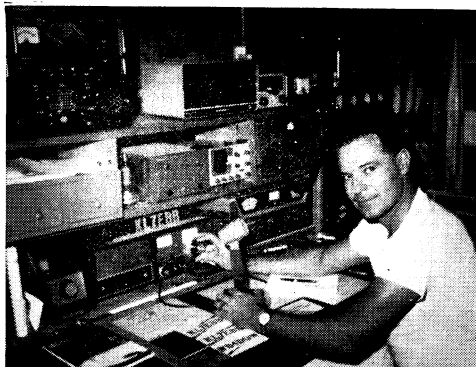
This should take care of the confusion involved in interpreting local standard time and, additionally, be a big boost to the many mountain-toppers who want to get home earlier. They could start at essentially the same time as they always have, but quit four hours earlier, leaving plenty of daylight to dismantle and get started home. We hope that the flexible starting time will help some who have to work most of Saturday and be a break for the go-for-broke-and-operate Sunday-only crew. You can now work out your own schedule for fuller participation according to your own needs and desires.

Thanks to your comments and wishes we hope the future ARRL VHF QSO Parties will be better ones and enjoy even better participation.

Those 65 certificate award winners shown in the following tabulation are reminded that their special awards are scheduled for a December 15 mailing. Nice going, OMs!

Soapbox

"A good inversion kept all sections from Delaware to Maine booming solidly into W1-band. Really made this a great contest and only 5 watts input on 2 at this QTH." — **W1DZA**. "Arrived home from the hospital Saturday morning to recover from an eye operation. I just got on briefly to give a few points. Oh well, CU in January!" — **K1TPK**. "This exercise was set up by members of the Milford (Conn.) CD Communications Group and served as an example of our ability to provide around-the-clock emergency radio service for the city." — **K1PXE/1**. "Operation was from Mt. Everett in the southwest corner of Mass., 2500 ft. elevation; battery power." — **W1HDQ/1**. "Our generator went west at 2115 GMT. Thank you, Mr. Murphy. The contest would have been better had more of the high power stations used their receivers before transmitting. All in all, it was a fun day on little Mount Equinox." — **WA2VGA/1**. "Your minimum multiplier box sure made me work a little harder!" — **WA1GFG**. "What ever happened to 2-meter activity in Vermont? I noted what seems to be an increasing tendency not to tune below 145 Mc. This cost me N.Y.C.-L.I." — **W1EIJ**. "A certain N.Y. multiop. high-power station had everything for the contest in his favor except operating sense. Never before have I seen such mal use of a v.f.o. I would think that a little more sense would come from a thousand watts." — **anon.** "Next time I'll have more rig than a Gonset III!" — **WA1FSK**. "This time 46% of my contacts were on c.w." — **W1EXZ**. "Low Sunday activity. Heavy rains fell on our contest site on Mt. Wachusett, Princeton, Mass." — **K1YLU/1**. "I am submitting this log to prove that there was a 6-meter station on in Vermont. Sorry the rig blew as I had lineups waiting for a section multiplier. Mobile operation in a Porsche 912 is tough, but fun." — **W1ADZ/1**. "The hardest part of the contest was trying to read other people's writing when recopying the log. 432 Mc. wouldn't work, but wait till Mount! This was just the second effort by our Talcott Mountain VHF Society." — **K1TZD/1**. "Tried the entire contest on 6 meter c.w. and disappointed about the number of c.w. stations active. However, this sure is a good way to get rare multipliers!" — **WB2VVQ**. "Is Vermont still in the Union?" — **W2WGL**. "Without a v.f.o. you don't stand a chance. Some means should be found to encourage a bit of spreading out." —



Alabama certificate winner **WB4DQW** (remember **KL7EBB/9?**) felt that he could have worked many more 2-meter stations if they had tuned up to 145.0-145.4 Mc. Mel reports the ground wave was exceptionally good during most of the contest period.

W2KXG. "Our location was 2470 ft. up on top of Summitt Mt. (W.N.Y.) in the fire tower." — **WB2EFH/2**. "This was a new experience for the 6220 Club. We operated from n.w. Bergen County, close to home for a change. The actual location was Hill 73 in Oakland, N. J., elevation 1000 feet. It's easy to get to and you can drive up with a car." — **W2PEZ/2**. "This was my first contest and I had a ball! I used a Two'er with one crystal and a 6-element beam 10 feet high which I rotated from my window using a yardstick." — **W2NAWX**. "I'll be back in January with more power and 220/432 Mc. capability." — **WB2KKO**. "When reaching our planned site, we find it occupied by WB2s QZZ WJV. They had gear for 6 and 2 and we had equipment for 220/432/1296. We decided to join forces and had a fine time until hit by a severe rain storm." — **K2UYH/2**. "This contest was the best I have ever entered. More activity plus good conditions with Vermont and R. I. represented." — **WB2MRK**. "Remedying our June mis-

Minimum Number of Sections (If any one minimum figure is met, all bands are shown.)						Minimum Number of Sections (If any one minimum figure is met, all bands are shown.)						Minimum Number of Sections (If any one minimum figure is met, all bands are shown.)						Minimum Number of Sections (If any one minimum figure is met, all bands are shown.)					
15 10 2 2 1						15 10 2 2 1						15 10 2 2 1						15 10 2 2 1					
Band (Mc.)	144	220	420	1215		Band (Mc.)	50	144	220	420	1215	Band (Mc.)	50	144	220	420	1215	Band (Mc.)	50	144	220	420	1215
K1ABR	15	18				K2BWR*	15	12				WA2WZP	17	10				K4QPJ/4	10	16			
W1ALE	7	6	5	3		K2CBA	15	9	4	8		WB2YQU	9	12				K4SUM	7	10			7
W1AZK		16	6			K2DNR		18	5			W3AD/3*	15	17				W4ZJA/4*	8	6			2
W1AJR	11	12	5	7		W2DLT/2*	12	15	8	7	1	W3ARW*	10	20	6	3		K7AUO/7*	2	3	2	2	2
K1BZM/1*	16	12	8			W2DZA	5	7	3	2		WA3BIV	12	10	2			K7RKH/7*	2	5			3
WA1DCI*	7	8	5	5		W2EIF	13	8	6	7		K3CUW/3*	15	14				W7TYR	2	2	2	2	1
W1EIJ	11	11		4		K2ERQ*	12	12				W3CGV	11	7	3	6	1	K7ZIR	5	3	2	2	1
WA1GFG	9	11				W2FAN				2		W3GBK		10				WA8BCA*	21	19			
K1IED		20				WA2FYE	15	10				W3GKP		12				WA8LRE	21				
W1IPJ/1*	11	13	5	4		W2JKI*	18	19	7	4		W3HIX	8	5	2	3		WA8PAR*	20	6			
K1JIX		10	9	8		WB2KHD		13				K3HKK/3*	19	16	2	6		W8PT			1	7	
W1WJS		11				WB2MRK	14	11	5	1	1	K3IPM	18	14	7	3		W8WEN	18				
W1POP	6	10				WB2MZE*	12	10				K3IUV	13	9	8	7		W9CSF/9*	5	6	1	4	2
K1PUG/1*	15	11				W2OW*	12	11	2	1		K3JRO/3*	15	12				K9OXY/9*	6	6			1
K1PXE/1*	13	19	4			W2PEZ/2*	17	16	7	3		W3KWH	31					K9ZGT					
W1QVF		5		3		WA2PBN	20					W3LCC	4	7	2	2		W0NXF					
W1QXX*	16	10	5			WB2PVB*	9	14				W3LP*	10	10				WA0SKH/0	1	3		1	1
K1TPK	12	11				WB2SEJ/2*		13				K3LUK/3*	14	4	2			VE2HW		9			2
K1TZD/1*	13	14	8		1	W2SEU	12	11	7	6		W3MMV		6		6	1	VE2SH		5	9		2
W1WHL	12	10	5			K2TXB/2*	10	15		7		K3OBU	2	14				VE3AIB		2			2
K1WHT	21	15				WB2UCS	8	12				W3PGA/3*	8	10		4		VE3BDX		2	5		3
K1YLU/1*	13	12	5	3		WB2UVP/2		15				W3SAO	3	7	2			VE3EJC		10			2
K1YON	7	10	9	2	1	K2UYH/2*	12	14		11		K3WJB	14	17									
K2ACQ				3		W2WGL		12				K3YFD*	10	12									
W2AQT	17					WB2WIK/2*	12	13				K4EJQ	3	14		3							

* Multioperator Station.

DIVISION LEADERS

Single Operator

K3IPM Atlantic
K9DZK Central
K0GJX Dakota
WA4YKN Delta
K4QPJ/4 Great Lakes
W2MRK Hudson
W0PFP Midwest
K1WHT New England
K7ZIR Northwestern
WB6YKU Pacific
K4SUM Roanoke
W0AJY Rocky Mt.
WB4FJM Southeastern
K6IBY Southwestern
W5WAX West Gulf
VE2SH Canada

Multioperator

K3HKK/3
W9CSF/9
.....
W4SGI/4
WA8BCA
W2PEZ/2
K0TLM
K1PXE/1
K7AUO/7
W6YEP/6
K4LVV/4
WA0SKH/0
WA4QPL
K7RKH/7
.....
VE2RM

take, we had 220 Mc. gear with us and it paid off (7 multipliers). 432 Mc. was a surprise with low power (15 watts). Maybe by January that will be changed to something in the order of 300 watts or so." — *W2JKI*. "Where were all the W1s on 6 meters. Good scatter Sunday morning helped for sections." — *WA2PBN*. "This was my first sideband experience and it was interesting to hear the consistent signals of W3KWH on s.s.b." — *K3MBQ/2*. "Activity in the N. Y. area was excellent, perhaps the best yet. Operating seemed unusually polite, a pleasant change!" — *W2DLT/2* (Murray Hill ARC). "The first time I've worked more than 200 contacts and conditions were only fair to poor." — *W2SEU*.

"432 c.w. and a half kilowatts really paid off this time. Next test we hope to have new antennas for 6 meters plus 220/432 Mc. Two meter s.s.b. activity is increasing. W9JZI was S-9!" — *K3HKK/3*. "I'd have scored twice as many points if I had been set up on c.w." — *WA3ADN*. "Rain and colder weather put a damper on conditions late Saturday and through Sunday. We're already planning for next June and hope to work 220/432/1296 and possibly 3400 in addition to 6 and 2." — *W3AD/3*. "The FAA once again gave me permission to use the 100 foot tower on Mt. Minsimat at the Delaware Water Gap. Most signals at the mountain were very good this time and I heard, though missed, Maine and R. I." — *K2VPV/3*. "In general very good 'closed band' 50 Mc. conditions with 20 sections worked by ground wave and 11 by iono-scatter. W9ECV/0, W0PFP and W5WAX were heard most consistently here on scatter. Activity was apparently better than last September too. All transmissions were s.s.b., all multipliers (except R. I.) were worked 2-way s.s.b. We hope to be multiop. in January with sideband KWs on 6 and 2." — *W3KWH*. "We would have increased our section total if

we had closed down our Novices. However, when the groundwave conditions started to get really good, the Novices were having such a swell time of it no one had the heart to turn off the SR-42 and fire up the Zeus. It was a good time in spite of poor band conditions." — *K3YFD*. "I had only been on 6 for a week when the contest started and I think that I had more fun than all of the OTs put together." — *WA3GLZ*.

"Too many of the stations had to QRT early and missed the tropo on 144 and 432 Mc. During tropo I worked states #32 (S. Dak.) and #33 (Minn.) on 144 Mc. Also worked Va., Ind., Ill. and Mich. for four new ones on 432 Mc. I was heard by K9ZUF/0 in Iowa who did not have a working 432 Mc. transmitter. Sob!" — *K4EJQ*. "You are most likely wondering why I'm turning in a score of 3. Well, until the fellows recognize that there is somebody on down here in Tennessee and turn their beams south, the score I'm listing will remain the same." — *WB4DCW*. "Very poor a.m. activity in the Alabama area and bad weather kept me from operating on a hilltop so I stayed home. Guess I'll have to go s.s.b., seems like they were doing OK." — *K4WHW*. "It took about 9 hours to get the 2-meter rig going but lots of action on Sunday so it was worth it. Lots of a.m. and c.w. this time but s.s.b. was the points maker." — *K8SNR/4*. "The portable location was atop Big Black Mountain in Harlan County, Kentucky, the highest point in the state and about 1 mile from the Virginia state line." — *K4QPJ/4*. "Two was very good during the contest and the number of s.s.b. stations heard but not worked convinced me that sideband is a contest must." — *K4HQI*. "From our location on top of Mt. Jefferson we experienced good local and extended ground wave on six and moderate local and ground wave on two. No openings, but some early morning scatter. We'll be back for our fourth year on Mt. Jefferson next June under the call of WA4BNX." — *K4LVV/4*.

"The few contacts I did make were hard work without band openings but I did enjoy the contest." — *WA5LTA*. "Two was in better shape than in June, but no skip." — *K5BDQ*. "W3KWH was in very good all day Sunday morning on 50 Mc. scatter. Tropo was very good both Saturday and Sunday evening on 144 Mc and I worked as far as 850 miles. Worked S. Dak. and Ohio for two new states on 2 meters. W. Pa. and S. Tex. were worked iono-scatter on 50 Mc. All in all my best section total for a September Party since I started in 1963. The opening on 144 Mc. peaked after the contest ended Sunday night or my two-meter section total would have been much higher." — *W5WAX*.

"Just moved into a new home and the XYL had me planting shrubs. Thanks to WA6GER/7 I did work Nevada for a new state although conditions on 6 were very bad." — *W6DOR*. "Not as much activity on 2 as there should have been. Somebody boobooed by scheduling our combined Southwestern/Pacific convention on the same weekend." — *WB6TFC*. "Lets exchange handle and QTH." — *WB6KBZ/6*. "Sorry to see such a poor showing. I think



K6DYD/6 went to the highest location (14,496 feet) and made the lowest score (zero). Jerry had only one crystal on 50.012, input 2 watts. He pleads for the s.s.b. stations to keep an ear peeled for these mountain-top c.w. mini-watters.





On the left, 15-year-old **WA5KID** of Louisiana reporting a lack of 6-meter openings although ground wave was fair. On the right, one of the **WB2MZE** crew (WB2s MZE QLP RIR) with nice results on six and two for 6600 points.



some were boycotting because of the change in rules (FCC). I personally think the change is a good step in the right direction." — **K6IBY**. "We need more publicity about the September contest." — **WB6WLF**.

"What with rain, lightning and wind, no wonder there's nobody in Idaho! I had to QRT with a dead battery at 0400 GMT." — **K7ZFG/7**. "The contest was loads of fun although the lack of local Washington participants was observed. Only a few locals on 6 although I worked 35 Oregon stations on 2." — **WA7ECY**. "I'd sure like the Washington hams to get the prod for their inactivity. It's getting so we have to send out satellite groups to ensure contacts! The first storm in over 2 and a half months of superb weather hit — guess when. Yep, the second weekend in September. That, and no 6-meter openings kept scores down but the addition of 1296 Mc. to our operation helped offset this. It is interesting to see s.s.b. becoming the dominant mode on 6." — **K7AUO/7**. "Murphy's Law really struck everywhere including here and me (Doug Murphy). Antenna problems before and during the contest, poor 6 and 2 meter activity. Thanks to **K7ZFG/7** for our only additional section multiplier." — **WA7IAW**. "Almost all of the two meter rigs were still up in Fairbanks so there weren't very many on from Anchorage. I think that is the only way I stand a chance of winning, hi!" — **KL7GCK**. "We were located east of Mt. Vernon, Wash., at an elevation of 2000 feet, at Devil's Mountain lookout." — **WA7EHE/7**.

"Club station and hilltop efforts would be more worthwhile if the contest ended at around 1900 GMT Sunday and some confusion might be avoided if all time zones started together." — **WA8TYF**. (See the lead Tim — **Ed**.) "K4EJQ is my 13th state on 432 Mc." — **W8PT**. "The best 2-meter opening of the summer was noted here as the contest closed." — **K8MWA**. "Good 6-meter ground wave during the whole contest. I made nearly as many contacts in Wisconsin and Illinois as I made in Michigan. Local activity fair but not very many stations trying hard." — **W8EOW**. "S.s.b. accounted for 90% of the QSOs on 6." — **WA8LRE**.

"Curious to know how many contest participants were running commercial vs. home-built rigs. A need for more operators to listen for and then copy c.w." — **W9KHH**.

"I suggest future v.h.f./u.h.f. contests be judged solely band-for-band. 6 is a snap, 2 is hard, 432 is mighty rough and 1296 is a bear cat." — **W0NXF**. (Bob, handling perhaps 5 or 6 times the volume of certificates now handled is a formidable problem but we will indicate single band. — **Ed**.) "Heard several 3s, 8s and 9s calling CQ Contest towards the end on scatter but was unable to copy the complete calls." — **WA0MRH/0**. "Lots of enthusiasm sparked by this first attempt of our newly formed hp-Loveland ARC. Several new stations have been added to 2 locally as a direct result. Hope to see some 220/432 Mc. stations result too. Two meters into Wyoming and Nebraska proved so easy that future contests may see us put up a portable site in each state to provide contacts for other contest stations at least on 6 and 2." — **WA0SKH/0**.

"One of the worst contests I've ever operated with poor conditions, high noise level and worst of all, no rotator!" — **K2PCG/0**.

"Please accept my fantastic score of 2 points. What else can I say?" — **VE6MC**. "Ours was a group activity of the Hamilton & District AREC." — **VE9RCB**. "The band seemed to be fine in the first 6-hour period and then it was tough to work out, high noise levels. Anyway, it was worth the QSO with VE3BDX in Ottawa on 432 Mc. I flew home from VO1-land for the test." — **VE2HW**. "Look for me on 1296 Mc. in the next contest, the extra points are worth it." — **VE3BDX**. "Unable to operate the entire period as I had to fly to Baltimore Sunday afternoon. I got a real kick out of flying over such states as Pa., N. J. and landing in Md. only a few hours after trying to work them on 2 meters. Generally poor conditions and I didn't hear one signal west, except for Ohio. Don't know where all the Michigan boys have gone to!" — **VE3EZZ**.

SCORES

In the following tabulation scores are listed by ARRL Divisions and Sections. Unless otherwise noted, the top scorer in each section receives a certificate award. Columns indicate the final score, the number of contacts, the section multiplier, and the bands used. A represents 50 Mc.; B, 144 Mc.; C, 220 Mc.; D, 420 Mc.; and E, 1296 Mc. or higher. Multiple-operator stations are shown at the end of each section tabulation. An asterisk denotes a Headquarters staff member, ineligible for an award. A double asterisk denotes a Novice Award winner. Bold-face listings denotes single-band high scorers.

ATLANTIC DIVISION

Delaware
W3CGV 3584-108-28-AB CDE
K3OBU 848-53-16-AB
K3NYG 322-46-7-AB

Eastern Pennsylvania
K3IPM 18,564-411-42-AB CD
K3WJB 10,385-335-31-AB
K3IUV 6660-146-37-AB CD
WA3BIV 4944-196-24-AB CD
K2VPV/3 3876-204-19-AB

WA3ADN 2880-180-16-AB
WA3EIO 1836-101-18-AB D
K3QGO 1650-165-10-A
W3HLX 918-37-13-AB CD
W3ETB 704-38-8-A
W3FYL 693-77-9-B
W3SAO 624-48-12-AB C
WA3GLZ 576-64-9-A
W3MMV 559-31-13-B DE
WA3HIT 504-84-6-B
K3AZH 440-40-11-A
WA3BSC 400-80-5-A
WA3BRW 238-34-7-AB
WN3HMK/3 100-20-5-B
W3AD/3 (7 ops.) 10,240-320-32-AB
K3YFD (9 ops.) 6754-307-22-AB

W3ARW (W3s ARW PMG, K38QO) 1131-87-13-AB
W3BN (10 ops.) 5460-266-20-AB CD
WA3AAN (WA3s AAN HGX) 3856-241-16-AB
W3LPJ (W3s GFN JUJ, WA3FBP) 2560-128-20-AB
K3YQS/3 (K3YQS, WA3s BCD DXY) 1386-126-11-A
WA3DBF (WA3s BOC DBF) 1232-112-11-AB
K3VZI/3 (3 ops.) 906-83-12-AB

Maryland-D. C.
K3HCE 2492-178-14-A
WA3AZK/3 1131-87-13-AB
W3LCC 1125-68-15-AB CD
WA3GBK 730-73-10-B
WA3HEN 588-84-7-AB
W3TFA 441-49-9-AB
WA3GWK 432-54-8-AB
W3HB 414-46-9-B
W3GKP 396-33-12-B
W3MHB 329-47-7-B
W3MNE 144-36-4-AB
W3MSR 28-7-4-B
WA3ILO 26-13-2-B
WA3GUI 22-11-2-B
K3CUW/3 (7 ops.) 7482-258-29-AB

W3PGA/3 (6 ops.)
3652-161-22-ABD
K3LUK/3 (5 ops.)
3640-178-20-ABC
WA3FCN/3 (WA3s EOP
FCN) 2538-167-14-AB
WA3GLP/3 (WA3s GDB
GLP) 1092-91-12-AB
WA3AQS (multiopr.)
395-79-5-AB

Southern New Jersey

W2EIF 8942-225-34-ABCD
WB2UVB 1573-143-11-AB
WB2YEH 1562-142-11-AB
WB2TLT 1008-112-9-A
WA2URU/2 (WB2WLP,
opr.) 688-86-8-A
WB2WVC 549-61-9-B
WB2LZW 246-41-6-AB
K3MBQ/2 208-26-8-A
K2BWR (K2s BWR ZRJ)
3267-121-27-AB

Western New York

K2LZF 3160-151-20-ABD
K2YCO 3090-85-30-ABCD
WB2OE 945-105-9-AB
WA2TEY 693-77-9-AB
WA2KND 492-75-6-ABD
K2MBZ/2 350-70-5-B
W2WGL 324-27-12-B
WB2WLL 296-74-4-AB
WB2KYQ 126-21-6-B
WB2GHO 122-61-2-A
K2PKK 105-71-5-AB
WA2HWC 87-26-3-ABD
K2ACQ 78-13-3-D
WA2KVN 52-26-2-AB
WN2AWX 46-23-2-B
WN2BSG 30-15-2-B
W2EAN 8-2-2-D
W2OW (WA2QGF, WB2s
NJN YJT)
5044-188-26-ABCD
K2TXB/2 (K2TXB
WA2CJ, K3BBO)
4544-124-32-ABD
K2ERQ (10 ops.)
4176-174-24-AB
K2LFB (K2LFB, WA2GJA)
1330-93-14-ABD
WB2SEJ/2 (WB2s RNS SEJ)
858-66-13-B
WB2VPY (9 ops.)
623-89-7-A
WA2VMB (5 ops.)
504-63-8-AB
WB2EFH/2 (5 ops.)
232-58-4-B

Western Pennsylvania

W3KWH (W3ZGI, opr.)
6851-221-31-A
W3BWU 1100-99-11-ABC
WA3ISY 378-63-6-AB
W3DJM 124-31-4-A
W3HTD 112-28-4-AB
WA3BGE 48-16-3-A
K3HKK/3 (9 ops.)
10,492-235-43-ABCD
K3JRO/3 (4 ops.)
5670-210-27-AB
WA3CFK/3 (WA3s
EQQ) 686-49-14-AB
WNAV (WA3s FTS GJ)
GPD 2-2-1-A

CENTRAL DIVISION

Illinois

WA9JYR (G3PAC, opr.)
2379-183-13-AB
K9ZGT 1130-113-10-B
WA9NVB 819-91-9-AB
WA9BQ 400-100-4-B
WA9EXH 384-06-4-B
WA9ONN 308-77-4-B
W9DJZ 216-54-4-A
WA9MSZ 188-47-4-B



Here's a view of the **K7AUO/7** microwave activity with **W7UDM** working on the 2300-Mc. equipment. The crew manned seven v.h.f. bands for a total of 13 multipliers.

WA9UCX 150-50-3-B
WA9NRI 92-46-2-B
W9EET 11-11-1-B
WA9LIV (5 ops.)
2338-167-14-AB
K9JAM (K9V KF, WA9NPS)
2184-182-12-AB

Indiana

K9DZK 3927-187-21-AB
K9QCB 2070-135-15-ABCD
WA9SSX 150-30-5-A
W9CSF/9 (7 ops.)
3024-157-18-ABODE

Wisconsin

WA9JXC 688-86-8-A
WA9JFM 612-51-12-AB
W9KHH 39-13-3-A
WA9POV 6-6-1-A
WA9ULK 3-3-1-A
K9OXY/9 (K9OXY, W9GJJ,
WA9LZM)
1066-76-13-ABC
W9HHX (WB2TTK,
K8OOV, WA9IOC)
720-90-8-AB
K9DKW (K9DKW, WA9s
MCC SRV)
550-50-11-AB

DAKOTA DIVISION

Minnesota

WA9QCZ 68-34-2-A

South Dakota

K9GJX 351-27-13-AB
K9FKJ 60-12-5-AB

DELTA DIVISION

Arkansas

WA5LTA 72-12-6-AB

Ohio

WA8LRE 3465-165-21-A
W8WEN 1800-100-18-B
K8ZES 936-117-8-B
WA8RMZ 505-101-5-AB
WA8RCN 78-39-2-A
WA8WSP 53-53-1-A
WA8STY 40-8-5-AB
K8LUC (WA8STX, opr.)
12-6-2-A
WA8SPA/8 12-12-1-B
WA8BCA (8 ops.)
18,500-464-40-AB
WA8PAR (5 ops.)
5668-218-26-AB
WB8ND (WA8s DFD STX
TYF) 1404-117-12-AB

HUDSON DIVISION

Eastern New York

K2CBA 7848-193-36-ABCD
WA2FYE 5300-212-25-AB
K2DNR 2714-107-23-BC
WB2YQU 1848-88-21-AB

WB2VQK 1242-138-9-B

WB2OIM

1212-101-12-A
WA2VAZ 840-60-14-AB
WN2BLM 776-97-8-B
WB2SH 676-52-13-AB
WN2BND 312-52-6-B
W2IP 196-28-7-B
WA2ZPD 160-20-8-AB
WB2AEB 136-34-4-B
WB2VQV 60-12-5-A
W2JKI (6 ops.)
22,368-432-48-ABCD
WB2VVS/2 (5 ops.)
2625-175-15-AB

N.Y.C.-L.I.

WB2MRK 10,592-307-32-ABODE
W2SEL 8784-218-36-ABCD
W2KKX 440-55-8-B
WB2TJE 225-45-6-B
WB2MEO 204-34-6-B
WB2UZY 145-29-5-B
W2QPP 84-14-6-B
WB2WOI 66-6-8-B
W2SD 36-12-3-B
WB2MZE (WB2s MZE QLP
RIR) 6600-300-22-AB

Northern New Jersey

WA2WZP 6669-247-27-AB
WA2PBN 3500-175-20-A
WB2UCS 2720-136-20-AB
W2AQ 2210-130-17-B
WB2KHD 1768-136-13-B

WB2UVP/2 1380-92-15-B

W2CVW 1140-76-15-AB

WN2ANI 904-113-8-B

WB2WBB 900-100-9-B

W2MKN/2 744-62-12-A

W2DZA 680-31-17-ABCD

WN2ZHL 400-80-5-B

WA2ACP 15-5-3-B

W2PEZ/2 30,143-664-43-ABCD

W2DLT/2 (5 ops.)
27,047-584-43-ABODE

K2UYH/2 (5 ops.)
10,175-243-37-ABD

WB2WIK/2 (6 ops.)
5875-236-25-AB

WB2KKO (6 ops.)
4368-208-21-AB

WB2PVB (WB2s GMR PVB)
3565-155-23-AB

MIDWEST DIVISION

Iowa

W9PFP 715-55-13-A

Kansas

W9ECV/9 552-46-12-A

W9SPF 65-13-5-AB

Missouri

W9LFE 287-41-7-B

K9TLM (WA2BXL,
WA9IKI, K9TLM)
610-61-10-AB

Nebraska

W9NFX 394-32-12-B

W9MRH/9 216-36-6-A

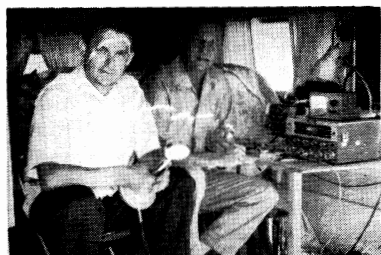
K9MBC 130-26-5-A

K2PCG/9 114-19-6-A

NEW ENGLAND DIVISION

Connecticut

K1WHT 12,708-353-36-AB



This is a mighty fine way to go hilltopping! **WB6ODM** (left) joined forces with **WB6PXN/6** to operate two bands at Leek Springs, El Dorado County, Sacramento Valley.

KIHD 4100-205-20-B
WIWHL 3456-120-27-ABC
KIYON 3132-84-29-ABCDE
WIDZA 876-73-12-B
KIKKK 567-63-9-AB
WAIGTP 496-31-16-AB
WNIHUE 276-46-6-B
WAIGIS 245-35-7-AB
WIQVF 232-25-8-BD
KIPCC/I 216-27-8-A
WAIGOI 152-38-4-B
WIWHR 140-28-5-B
WAIFSK 65-13-5-A
KIWHIS 30-6-5-A
WNIHOL/I

5-5-1-B
KIPXE/I (14 oprs.)
13,932-378-36-ABC
KITZD/I (12 oprs.)
11,088-290-36-ABCDE
KIPUG/I (K1s PUG TKJ)
4316-166-26-AB

Eastern Massachusetts

WIEUJ 4446-164-26-ABD
WAJETC 1469-113-13-AB
WIDOM 1008-84-12-AB
WIJSM 627-57-11-B
WAIDYU 276-46-6-A
KIPCC/I (14 oprs.)
238-34-7-B
WICTR/I 160-31-5-BD
WIMCR 150-25-6-AB
WICTR 75-25-3-A
WIQXX (WIQXX, KISLZ, WAIBGB)

8355-193-31-ABC
WAIDCI (4 oprs.)
5075-186-25-ABCD
WAIACD (WA1s ACD BIQ)
3009-177-17-AB

Matne

WIIPJ/I (14 oprs.)
13,530-387-33-ABCD

New Hampshire

KIMFQ 2125-125-17-AB
WIALE 1701-67-21-ABCD
WIAZK 1474-56-22-BC
K1BJT 975-75-13-AB
WIJJO 880-80-13-AB
WICYB 250-25-10-AB
KITHG 65-13-5-A
WAIDWS/I (WA1s DWS ECY HVZ)
2912-224-13-A

Rhode Island

WAIGFG 4640-232-20-AB
WIAJE 4305-105-35-ABCD
K1ABR 3102-94-33-AB
K1TPE 3082-134-23-AB
WIPOP 1680-105-16-AB

Vermont

W1GZG/I 1053-81-13-A
K1GYT 832-64-13-AB
W1ADZ/I 192-24-8-A
W1EXZ 91-13-7-AB
WA2VGA/I (WA2VGA, WB2YEM)
160-20-8-A

Western Massachusetts

K1JIX (WA2BVU, oprs.)
2308-72-27-BCD
K1ULZ 900-75-12-AB
W1HDQ/I 784-49-16-AB
WB4BY/I 700-70-10-A

WIUCB 15-5-3-AB
K1BZM/I (8 oprs.)
9468-252-36-ABC
K1YLU/I (10 oprs.)
7656-217-33-ABCD

NORTHWESTERN DIVISION

Alaska

KL7GCK 15-15-1-B
Idaho
K7ZFG/7 (K7GWE, opr.)
24-8-3-AB
K7UGD/7 14-7-2-B

Oregon

K7ZIR 1183-81-13-ABCDE
W7TTR 486-45-9-ABCDE
W7HBH 90-17-5-ABC
WA7ECY 35-35-1-B
K7AUO/7 (11 oprs.)
1404-93-13-ABCDE
W7ICS/7 (W7ICS, K7ELM)
81-23-3-ABD

Washington

W7FIM 20-5-4-AB
WA7EHE/7 (5 oprs.)
260-65-4-AB
K7OUV/7 (5 oprs.)
4-4-1-B

PACIFIC DIVISION

Nevada

K7ZOK 35-7-5-AB

Sacramento Valley

W6DOR 57-19-3-A
W6HBU/6 (6 oprs.)
558-62-9-AB
WR6PXN/6 (WB6s ODM PXN)
520-52-10-AB

San Francisco

WB6YKU 246-41-6-B
WR6WLF 148-37-4-A

San Joaquin Valley

K6UJG 168-21-8-AB
W6YEP/6 (4 oprs.)
1905-127-15-AB

Santa Clara Valley

WB6WLH (4 oprs.)
792-87-9-ABD
WB6KBZ/6 (WB6s KBZ PGN)
696-58-12-AB

ROANOKE DIVISION

North Carolina

WA4BVW 728-56-13-AB
W4EPV 174-29-6-AB
W4HJZ 147-21-7-AB
K4LVV/4 (K4LVV, WA4s RNX VCC)
2304-144-16-AB

South Carolina

W4GCB 33-11-3-B

Virginia

K4SUM 4752-181-24-ABD
WB4FOR 310-62-5-A
WN4GFC 117-39-3-B
W4ZJA/4 (6 oprs.)
2112-128-16-ABD



WA2PBN concentrated on 6 meters and came up with 20 sections. John just got on to give out a few points and wound up by operating from midnight on! Input 700 watts, and antenna a 6-element Telrex up about 50 feet.

WA3HQD 4 (WA3s ELA HQD HQE)
1034-94-11-AB

Los Angeles

K6BPC (K6QPH, opr.)
72-24-3-AB

Orange

K6IBY 352-32-11-AB

San Diego

WB6TFC 176-44-4-B

ROCKY MT. DIVISION

Colorado

W0AJY 154-77-2-AB
WA0SKH0 (14 oprs.)
546-87-6-ABDE
WA0PHZ/0 (5 oprs.)
114-57-2-AB
WA0HFS (WA0s HFS QNR)
48-24-2-AB

New Mexico

W5IXS/5 40-20-2-AB
W5OJM 28-28-1-B

Utah

WA7IAW 48-12-4-AB

SOUTHEASTERN DIVISION

Alabama

WB4DQW 495-55-9-AB
K4WHW 184-46-4-AB
K4EOA 76-19-4-AB

Eastern Florida

WA4STJ 9-9-1-A

Georgia

WB4FMJ 570-57-10-AB
K4HQJ 360-30-12-AB
W4CAH 76-19-4-A
WA4QPL (6 oprs.)
225-45-5-AB

SOUTHWESTERN DIVISION

Arizona

K7RKH/7 (4 oprs.)
260-21-10-ABD

WEST GULF DIVISION

Oklahoma

W5WAX 602-43-14-AB

Southern Texas

K5BDQ 20-20-1-B

CANADIAN DIVISION

Quebec

VE2SH 1408-82-16-ABD
VE2HW 407-33-11-BD
VE2RM (8 oprs.)
1462-84-17-ABD

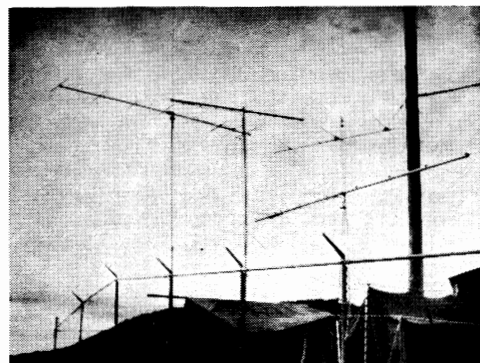
Ontario

VE3EJC 864-64-12-BD
VE3DSQ 814-74-11-AB
VE3BDX 570-51-10-ABD
VE3CRA/3
330-33-10-AB
VE3FIB 165-55-3-B
VE3AIB 136-32-4-BD
VE3ESE 132-33-4-B
VE3CIT 90-17-5-ABD
VE3DNR 40-20-2-B
VE3SAU (7 oprs.)
1230-82-15-AB
VE3RCB (10 oprs.)
110-55-2-B

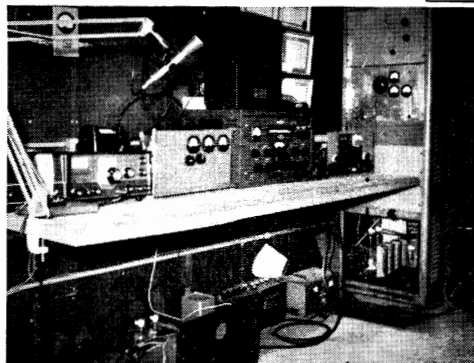
Alberta

VE6MC 2-20-1-A
CHECK LOG: WB4HIP, WA9CUK, VE3FCH/W9

QST



The new hp-Loveland ARC, **WA0SKH/0**, operated near Loveland, Colorado was taken over by an enthusiastic crew of 14 manning 4 bands, 50/144/42/1217. Gear on 220 and above was homebuilt or modified surplus. They doubt trying that hilltop in January but wait till June '68!



The Cleveland 50 Mc. DX Club, **WA8BCA**, is an old hand at racking up big contest scores. The crew of 8 manned two bands for a total of 464 exchanges and 40 multipliers (21 on 6, 19 on 2). Here's the 6-meter position, 20 minutes before zero hour.