

Results

571	W
352	WB
43	WIWA
546	K4AE
104	WIADW

ENTER SUMMARY BELOW ON LAST S

ns wkld 75, Input 150 watts, to

sections X 1.25 power Mult.*

.5 for 150 watts, or less, at all times.

DRAKE TR 3

Ante

34th ARRL

NOVEMBER

SWEEPSTAKES

REPORTED BY BOB HILL,* WIARR

JOWLS went unshaven, leaves went unraked, homework went undone: the Silly Season was here again. The OM muttered incoherent warnings to the rest of the family and disappeared into the shack, slamming the door behind him. It was the 34th ARRL November SS!

This year's wild doings (Nov. 11-13, 18-20) resulted in 842 phone and 1088 c.w. logs adding to the mailbag sag at Hqs., with some interesting trends to be noted. Phone activity edged ever closer to parity with c.w. as many participants found that QSOs went faster and were more numerous on sideband. Section-hunters flourished: 59 marksmen (21 voice, 38 code) found the range for all 75 multipliers — quite an increase from last year's total of 26. A third and somewhat peculiar phenomenon: of the 1947 logs submitted, 314 (almost one in six) represented either portable, multi-, or "guest" operation.

Logs, logs, logs. About half a dozen were computer printouts, while W4BVV went one better with a computerized dupe sheet. Some handwritten logs, like W7FCD's, were almost works of art in their neatness and precision; others — well, we were unable to award the Larson E. Rapp Memorial Booby Prize to the deserving entrant because we couldn't read his name or address, and he didn't put his call down anywhere anyway. Nearly everyone had something to say, so don't feel offended if your comments didn't make the writeup: we'd have to print a special issue of *QST* to include them all! But remember that *all* comments are read and *all* suggestions evaluated.

As usual, most comments fell into one of five categories: (1) "Had a ball," (2) "Where was [fill in a section]?" (3) "Murphy," (4) "Wait

till next year," and (5) "Let's-drop-let's-add-let's-change." We had the customary quota of broken bones, defunct rigs, tilt-over towers that weren't supposed to, babies being born between NR 286 and NR 287 — make your own list! Suggestions for improving the SS included: drop the power multiplier, increase the power multiplier, change the criteria for a score multiplier, go back to two weekends, more hours, fewer hours, restore signal report to the CK — and a few strange characters even said they like the SS just the way it was. Several guys still stuck on a.m. commented sadly on the hopelessness of it all; several comments about that cloddish clique that runs a kilowatt (or more) and claims the low-power multiplier, implied that some entrants who signed the "I-have-observed-all-competition-rules" must have observed them from a considerable distance. And to you fellows intrigued by what effect the new FCC regs will have on the '68 Sweeps: you'll have to wait another year, since both weekends of the upcoming fracas will be over before November 22!

LED SECTION BOTH MODES

K1GAX	W4NQA	K7RAJ
K1LPL	W4USM	W9YT
W1BGD/2	K5RHZ	WA9ITB
W3BES	K2EIU/5	WA0CVS
W3GAU	W5WMU	VE1APP
K4BAI	KZ5FX	VE2BMS
K4PUZ	W6BIP	VE5US
K4WJT	WA6IVN	VE7EH
W4BVV	KH6IJ	3C8BB

* Assistant Communications Manager, ARRL.

"Long may that haunting DIDIDIT-DIDIDIT ring out across the airwaves." — K2KUA

For the third year, a thousand-point bonus was offered to each entrant attaching an SS message in proper form with proper handling data included. One-third (647) of the troops went forth to battle this MSG dragon; 70% succeeded in slaying the beast, but the others returned with nothing but singed sideburns to show for their efforts. If you were in the latter platoon, most likely you (1) omitted the precedence, (2) miscounted text word-count for the CK, or (3) put down inadequate handling data.

As long as we're on a military kick, let's look at the big guns for '67:

Phone. Single operator: K4WJT 193,918, W2RLM 189,550, K8DOC (WA8LEO, opr.) 178,707, K1LPL 176,904, WA6IVN 176,400, WA4PXP 174,886, K5RHZ 168,276, K4PUZ 167,610, W3GRF (K1ANV, opr.) 167,056, W5WMMU 166,140. **Multioperator:** WA0CHH 172,563, K0VVY 167,112, WA9HEU 133,809, WA0CJU 129,717, W3ZKH 108,091.

C.W. Single operator: W9YT (K9ZMS, opr.) 139,563, K1LPL 138,883, W6RW (W6DQX, opr.) 135,563, W1BGD/2 134,313, K4GSU/3 131,123, K2EIU/5 130,281, WA9ITB 130,028, W3BES 128,813, K4PUZ 125,013, W9LKJ 124,921. **Multioperator:** K4VDL 128,438, K5LZO 125,550, WA3EPT 117,250, K0VVY 115,610, WA0DKA 103,410.

(Parenthetically, VE5US deserves honorable mention for topping Canada both modes: 151K with VE5DK behind the mike; 115K with VE5UF sending Morse. Extra-FB performances from VE-land!)

Intra-sectional struggles are always a highlight of any SS. Most of the real Pier-Sixers were on c.w. this time. In EMass, W1MX (K3QDD, opr.) nosed out K1EUF by *nine points* (98,790 to 98,781); in WPa we had a thriller among WA3BLE (104,843), K3HKK (K3AHT, opr.) (104,483), and WA3IXN (103,660); Michigan was the scene of a spirited struggle among K8UDJ, W8UM, and W8SH, operated by K8MFO, W8CQN, and K1ZND, respectively. Other close races were in SNJ (WB2TEN and W2HDW), Miss. (K5AEU and K5IIN), NLI (W2GGE and W2AJR), NNJ (WB2RKK and W2NNL), Vt. (WA1HXU and W9BLQ/1), Alaska (KL7JDO and KL7MF), SJV (W6QMC and K6RTK), NC (W4NQA and K4MPE) and Alberta (VE6ATH and VE6VV). Only four sections had really intense battles on phone: MDC (W3GRF and W3AZD), Wis. (W9YT and K9LBQ), Nebr. (WA0HSX and K0CVA) and Va. (W4BVV and K4CG). It doesn't pay to let up even for a minute!

Novice entrants were paced by Minnesota's WN0RAG with a score of 8,505; other WN certificate winners were WN1HGS WN1HHA WN1IUE WN2ANI WN2ARD WN2BND WN2CAL WN3HOM/3 WN4GTG WN6VXJ WN8WIA WN9ULI and WN9UOP.

Clubs

Forty-six ARRL-affiliated clubs submitted the necessary three individual entries and secretary's letter in order to vie for the handsome cocobolo gavel that goes to the highest-scoring club each year. For the fourth year in a row, the potent **Potomac Valley Radio Club** crew grabs that gavel! PVRC's active Activities Manager W3TMZ had what one car manufacturer calls "a better idea": rather than split the boys into just two large intra-club competing teams, Jack appointed *ten* team captains, each to have nine or ten members on his squad. The result was spectacularly successful, as 92 PVRCers turned out, blitzing the opposition by a margin of more than two million points! Special recognition goes to K1ANV, whose stout performances from W3GRF (on phone) and W4BVV (on c.w.) led the club on both phone and c.w. — no easy feat when you look at that roster of Potomackers.

Oddly enough, one man topped both modes for the second- and third-place clubs, too. W3BES stands at the head of runnerup **Frankford Radio Club's** 64 entries, and W8QXQ is champ of the fast-rising **Indian Hills Radio Club**, whose fine effort moved them from eighth in '66 to third in '67. **Central Michigan ARC** was the only other club to go over the million mark. **Connecticut Wireless**, with nearly the same



If the faces aren't familiar, the voices should be. At left is **K0CVA**, whose 834 phone contacts was fourth high nationally; at right is **WA0CHH**, chief op of the Missouri multiop effort that garnered a "multi-top" 172,563 points and a "75 sweep." Behind CHH is an unidentified stationary object.

FB total as last year, still slipped a bit from third to fifth. Germantown RC's talented teenyboppers moved up a notch, from 7th to 6th. The top ten is rounded out by the University of Rhode Island RC, Miami Valley Amateur Radio Contest Society, and South Jersey RA.

Here are the standings by mode:

Phone	Rank	C.W.
Potomac Valley RC	1	Potomac Valley RC
Frankford RC	2	Frankford RC
Indian Hills RC	3	Indian Hills RC
Germantown RC	4	Conn. Wireless Ass'n
Miami Valley ARCS	5	Central Mich. ARC
Central Mich. ARC	6	Minn. Wireless Ass'n
Univ. of Rhode Island RC	7	Nittany ARC
South Jersey Radio Ass'n	8	Massillon ARC
Conn. Wireless Ass'n	9	Univ. of Rhode Island RC
Synton ARC	10	South Jersey Radio Ass'n

We look forward to a very interesting future competitive situation in Minnesota, where two new and promising clubs have recently been formed: the Minnesota Wireless Association, whose membership is 100% ARRL and which, under the guidance of WØTKX, gathered over 586,000 points in its initial venture; and the Viking Amateur Radio Society, which, in the words of Secretary WØBMY, "has dedicated itself to becoming a real factor in amateur radio," and whose club station WAØCJU turned in a cool 130 kilopoints multiopping phone. So have at it, you two clubs, and Gopher that gavel next year!

Musings

... on *Doing Better*. "Didn't have much operating time, but did real crummy, even for 20 minutes. Will go all out next year and break the 25-point barrier." — WØ6YAX. ... Germantown RC's WA3DNV broke said barrier, going from 24 phone points in 1966 to 14,040 this year. A 5,850% score increase is not to be sneezed at. ... "I think the SS is trying to tell me something about my c.w. By switching to phone this year my score is eight times as high. Now if only I could do the same next year." — WAØOTE. Now if you only could, Jim, you'd wind up with — um — 642,843 points, a very creditable showing indeed. ...

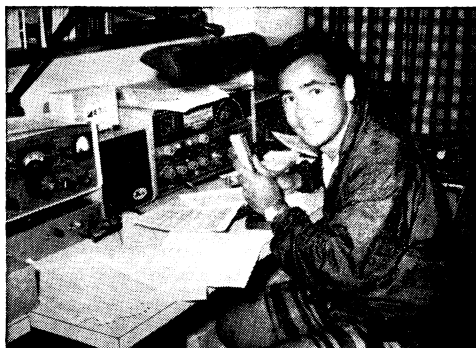
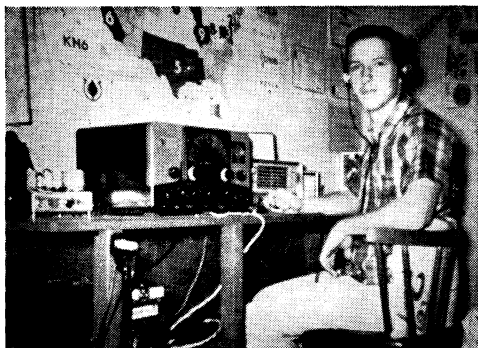
... on *Time, the Subtle Thief*. "Been in every SS since #1, the marathon affair which lasted nine days, like the Novice Roundup." — WØBIP. At least two other original SSers were still at it this year, W7EKE (ex-WØERU) and the 1930 winner, W1ADW, who says the SS is better than ever. ... "I nominate W2WE longest licensed in the contest (CK 13)." — WA6JDT. Waal, W6AM has him beat by a year. "It's good to meet old friends in the SS," Don says. ... "It is a sobering thought to find that out of 343 stations worked, only 11 have licensing dates older than mine. Time QRQs." — W2LEJ. ... "Nice contest — a lot like old times back in the 30's." — W5WG. ... "A certain WB2 gave me CK 71 three times, until I told him what it was." — WA8RUJ. Best wishes to that WB2 for his next 96 years in ham radio, too. ... "My CK 17 (first licensed as 1ABW Feb. 1917) really caused 'em to flip." — WØIP. "Enjoyed meeting again many of the oldtimers I used to work years ago as W6PBV from SCV Section." — K7KOK. ...

... on *Sweeping Clean*. "A funny thing happened on the way to a clean sweep: needed SF and couldn't find one, so called CQ SF. W6BIP answered and it shook me so, I almost lost him. VE8ML was an anticlimax." — W4FRO. "What a delight working VE8MP for my 75th section. The DX contests really teach you how to dig for the hard stuff." — K8HZU. "Didn't mean to be very active this year, but once I heard the normally-rare sections blast-

CLUB SCORES

Club	Score	Valid Entries	Phone Winner	C. W. Winner
Potomac Valley Radio Club	4,948,841	92	W3GRF (K1ANV, opr.)	W4BVV (K1ANV, opr.)
Frankford Radio Club	2,934,247	64	W3BES	W3BES
Indian Hills Radio Club (Ohio)	1,345,245	41	W8QXQ	W8QXQ
Central Michigan Amateur Radio Club	1,054,162	21	W8VPC	K8TIDJ (K8MFO, opr.)
Connecticut Wireless Association	928,580	19	K1HTV	W1BGD/2
Germantown Radio Club (Pa.)	879,192	19	W43CQW	WA3DCM
University of Rhode Island Radio Club	766,557	10	K1LPL	K1LPL
Miami Valley Amateur Radio Contest Society (Ohio)	739,159	18	W48MCR	K8BFX
South Jersey Radio Association	723,174	33	W2ORA	K2AA (W2FYS, opr.)
Minnesota Wireless Association	586,383	11	WØAA (WØTKX, opr.)
Nittany Amateur Radio Club (Pa.)	529,330	17	K3HKK (K3AHT, opr.)	K3HKK (K3AHT, opr.)
Massillon Amateur Radio Club (Ohio)	528,142	19	W5YHU	K3QJL
Synton Amateur Radio Club (Ill.)	505,663	7	K9YNG	W9JCK
Order of Bolled Owls (Ohio)	390,865	7	W48RWU	W8ETU
Wisconsin Valley Radio Association	384,309	12	W9RQM	W9RQM
West Park Radiops (Ohio)	374,273	17	W8IPA/8	W8AJW
Buckeye Shortwave Radio Association (Ohio)	326,835	11	W8VQ1	W8OYT
Candlewood Amateur Radio Association (Conn.)	321,492	7	W1CSM
Huntsville Amateur Radio Club (Ala.)	310,783	13	W4USM	W4USM
Suffolk County Radio Club (N. Y.)	302,013	16	WA2QEB	K2ZYR
West Valley Amateur Radio Club	301,080	8	WB6UHF	WB6KPN
Westside Amateur Radio Club (La.)	282,937	5	W6BUK
1200 Radio Club (Mass.)	270,165	9	K1KNI	W1AHRG
Niagara Frontier DX Association (N. Y.)	269,247	7	WA2BEX	W2SSC
Rochester Amateur Radio Association (N. Y.)	252,817	16	WB2RCB	W2ADN
Viking Amateur Radio Society (Minn.)	249,395	5	WØIVZ
Tri-County Radio Association, Inc. (N. J.)	222,211	11	W2WE	WA2ASM
Radio Club of Tacoma (Wash.)	217,073	10	W7BUN	K7VPF
Springfield Amateur Radio Club (Ohio)	212,091	9	W8EQX	WA8GCG
Gallatin Amateur Radio Club (Mont.)	197,044	6	WAØATY/7	K7KOK
Louisville's Active Radio Operators (Ky.)	189,038	8	W4CVI	W4CVI
Casper Amateur Radio Club (Wyo.)	173,555	4
West Allis Radio Amateur Club (Wis.)	172,164	5	WA9NVY
Johnson City Radio Association (Tenn.)	149,192	5
Oak Park Amateur Radio Club (Mich.)	142,709	4	W8DQL
Morton West High School Amateur Radio Club (Ill.)	122,016	6	W9RJL	WA9RJL
Northtown Amateur Radio Club	111,925	6	VE3EVZ
Cincinnati Buckeye Netters	83,754	5	WA5TYF
Motor City Radio Club (Mich.)	81,924	5	W8SS
North Penn Amateur Radio Club	54,089	3
Boeing Employees Amateur Radio Society (Wash.)	45,476	9	W7CJL	W7ERH
Chicago Radio Traffic Association	24,600	3	WØECC
R. F. Hill Amateur Radio Club (Pa.)	20,836	10	W3BUR	WA3ABN
Louisiana Tech Amateur Radio Club	18,460	3	WA5JWU
Lake Success Radio Club (N. Y.)	10,810	5	K2HGR
Northern Chautauqua Amateur Radio Club (N. Y.)	4,833	4	WB2VVW

Clean sweeps were numerous this year, and pictured right (top to bottom) are three reasons why. Neatness and portability are the characteristics of the setup at **W6NTY** ("Nuts To You—it's cold in North Dakota"), a popular signal in the phone affair. The Heath-line equipment is mounted in a 3/4-inch plywood console that can be readied for shipping in just half an hour, should Al ever feel the urge to silently steal away to a more temperate climate—like maybe South Dakota. . . . **KP4BJD** looks *my contento* in his VP9 shorts, and no wonder: he had 500 A3 QSOs, with over 200 on 28 Mc. alone, to go along with the balmy weather in Santurce. *Bien hecho, Gabriel*. . . . If your c.w. operation didn't include 40 or 15 you probably didn't work Nevada, because you didn't work **WA7GCV** (below). Mark and helper **WA7GUF** sent out sparks from Sparks to 137 eager section-chasers.



ing through on 15 I decided to try for the clean sweep. KV4AM saved the day by providing the West Indies Section. I never even heard any of the KP4 gang." — **K8KFP**. Al got all 75 in 100 QSOs and only 14 hours of brasspounding. . . .

. . . on *Being Rare Game*. "The pileups for Maine were great fun and I hope I didn't miss too many that needed the multiplier." — **K1GAX**. "At some of the reactions some people gave when they learned my section, you'd think I was the only ham in Wyoming!" — **WA7EWC**. Local QRM is provided for Bruce by **WA7DNZ**, who lives across the street. And the same section's **W7TSM** un-anxiously awaits the mess of QSLs that his SS activity is sure to stimulate. . . . Reliable **KZ5FX** offers a chilling thought: "Next year I'll be a W, and who from KZ5 will make clean sweeps possible?" Who indeed? Say it ain't so, Clem! . . . Here's why you missed W.I. on c.w.: "Relay went out in rig between phone and c.w. contests, so wasn't able to keep promise to be back for c.w." — **KP4DBJ**. "Ordinarily, being a California ham is not much of a treat. But during the Sweepstakes any station here in the Santa Barbara Section does cause a sensation!" — **W6RFU** (**WB6DPV**, *opr.*). Jim took the '64 SBar award with 30 watts of a.m. and 80 QSOs. . . . "Enjoyed working SS from Nevada; it's almost like being a DX station. First SS in about 10 or 12 years for me. Last one was using my other call, **K6BWD**. Ran into several longtime friends." — **W7EJU**. "I must have been the only VE2 in the contest. Now I know what the DX feels like, and they can keep it! Even had a K2 on c.w. pick me up in the Canadian 75-meter phone band and entice me above 3800. We must have been really rare." — **VE2BMS**. "Had fair propagation the first day [of the phone weekend], was all set for a big second day, but condx were the worst I ever saw during SS; also had power interruptions on Sunday for approximately 3½ hours. Glad to give some stations a NWT multiplier." — **SC8BB**. Marsh even managed to work his own call-area on c.w. by nabbing **VE8YM**. . . .

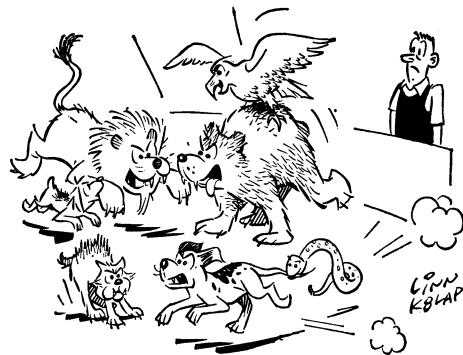
. . . on *Cheating*. "I cannot but feel that misuse of the QRP multiplier must result in a hollow victory, if you win and God-only-knows-what if you do not." — **W4BRB**. . . . "After hearing a couple of guys on the air bragging about their always cheating in the SS by running high power and claiming low power, I decided I would get my linear out of the house for the weekend so no one could

accuse me of cheating. So I dropped it off at **W5UKK**'s house for safe keeping. I am going to do this every year, because I have no desire to have anyone include me in with such a bunch of slobbs." — **W5JAW**. . . . "KILL SS cheaters!" — **WA3FHB**.

Vox Pop

"There were some contacts given same number due to error in my logkeeping. Next year I'll use ARRL logs." — **W6JVA**. And what about you other nonconformists? . . . "My first SS, and I should not even have attempted it without a direct-readout numerical clock." — **WB4HFJ**. "We gave up a weekend leave to operate the SS, and we're glad we did," enthuses Navy's **W3ADO**. "Losing to Navy doesn't make us too happy but it did provide a lot of good experience for our new ops," counters West Point's **W2KGY**. . . . "Worked **KH6IJ** through a W6 pileup!" — **WA4UAZ**. "Special thanks to Dick, **KV4AA**, who is *always* there on 14081 when you need W.I." — **W8UM** (**W8CQN**, *opr.*). "Many sections rare in CD Party easy here, but many easy in CD rare here." — **WA8MCQ**. "Ever try to send with a cast on your thumb?" — **WA8UPU**. . . . **K9ZMS** and **W4USM**, among others, mentioned the conflict with pro football on TV. Wish Pete Rozelle would get smart and reschedule the games — after all, we were here first. . . . "Using last year's check-sheet, after having crossed out the old call letters, I was surprised to see most of the same stations back in the contest this year, on the same bands." — **W2QFQ**. "An outstanding factor was the discrepancy in the times of contacts. My clock was checked against WWV, but I noticed variations of 2 to 4 minutes in reports received. Lack of transceive capability was very detrimental to speed of zeroing in." — **W4ZNI**. "Ten-meter phone was excellent. Like we say here in San Juan, '*Estaba de película*.'" — **KP4BJD**. "To future Novices: learn to listen more and send less — it helps in picking up section multipliers." — **WN7HPK**. "Drank 2.76 gallons of coffee and 6 quarts of beer. Hic!" — **WB6BBC**. "Sending **CK 54 SV** was 'tongue-twister' on c.w.; either that, or I have a lousy fist." — **WA6JDT**. "My stupendous score is directly a result of Murphy's Law. After 13 years in amateur radio, this was to be my first attempt at the SS. And how I planned it! Alas, come Saturday at 5 P.M. my wife presented me with the winner: my #1 son, who scored 8 lbs., 8 oz., a good one in that league, hi." — **K2KGE**. "Nearly

went permanently QRT when lightning hit 100 feet away from my antenna." — **WB2ZSG**. "They sure do send fast, don't they!" — **WB2UZU**. "I wouldn't wish having 73 multipliers on my worst enemy. You could have a nervous breakdown looking for the other two. I wonder what it must be like winding up with 74." — **K2BMI**. "To pad out my low score a bit I drafted my first message and set about trying to get it into a net. Broke into the Grey-Bruce Net with my twenty-five 80-meter watts and found the NCS, **VE3FGV**, was most cooperative and even took the trouble to make some kind comments at the end of the session. If I'm not careful I'll find myself hooked on traffic handling — have to find some use for the rest of my pad of message-blanks." — **VE3FXZ**. "My 2nd op never called, never showed, and I haven't heard from him since." — **WB2MJD**. "My first big c.w. venture since Novice Round-up in 1953!" — **W0PAN**. "Bumped into 3C8BB right at the start of the SS again — honest, no skedd! Surprised to see N.H. among the hard-to-work this year for the first time in ages." — **W4KFC**. "One fascinating aspect of the Sweepstakes is looking at the statistics after the contest. I tested the high-power vs. low-power argument this year, and a complicated analysis of my statistics convinces me that high power produced no more than 10% more QSOs than low power would have (and I threw away that 1.25 score multiplier to do it). To heck with high power!" — **W4DVT**. "What an exercise in the gentle art of zero-beating. (Too bad some of us flunked the course.)" — **W4ZM**. "One could feel the tension on 15 metres a few minutes before Z hour as everyone watched their clocks count down. Thereafter it was sheer bedlam, but the contest was a rag, nevertheless." — **VE7BHN/W0**. "This was my first contest. Hope to do better next year with more operating time." — **K9YNG**, who led Ill. on A3 with 114K. "Passed out after my 527th QSO, and that ended it." — **WA9LVJ**. . . . We salute: **W0IYH**, who operated 20 s.s.b. only and still got all 75 mults; Technician **WB2VZV**, who worked six stations on 6 meters with 5 watts to a 40-meter dipole; and 15-year-old **WA7CSK**, who ran 100 watts on c.w. for 14 hours with an indoor dipole in a house at the bottom of a deep gully — and made the clean sweep in just 170 exchanges. . . . "My sincerest thanks to **WA3IID**, who missed his first chance to operate an SS and probably the last chance for the next five years, for loaning me his receiver so I might operate." — **WA5GKI**. "As usual, managed to get the hard sections and miss the easy ones." — **W3CSZ**. "QRM was heavy on the Novice bands." — **WN3HYJ**. (Yeah, and about those other bands . . .) . . . "First SS for me since '63; been QRL as **DL4LA**." — **W5QGZ**. "Three cheers and a tiger for all those guys like 3C8BB and **KL7AIZ** who took a spin up into the Novice band to give us peons (hi) a chance at the goodies," praises **WN0RAG**, who deserves some cheers himself for piling up the highest Novice score in the affair. Tim adds, "My biggest kick was working **F3VN/W2** in **NNJ**. Made the afternoon more enjoyable for me and I hope he liked our American-style contest." Okay, let's find out: "Really enjoyed my first SS. I was impressed by the courtesy of the operators, in spite of the high level of activity and QRM — but where were the old-timers? I felt like a grandfather passing out **CK 501**" — **F3VN/W2**. The Gallic touch was evident in the second call area, as **F2YS** also was on helping out at **K2RDM**. *Vive les Suisptecques!* . . . "I worked California on 80 meters!" — **WN8YVV**. . . . **K1KDP** used the phonetics "Kosher Dill Pickle" and found they attracted more attention than his section, **WMass**. . . . Not every member of the Potomac Valley Radio Club is an enthusiastic SSer. **K3NPV** did his duty and participated both weekends, but John's comment is merely "Bah, humbug." . . . **WA8TKW**, at the tender age of 12, ran up



"WHAT A ROARING AND NOISY CHALLENGE!"
"VE1AKA"

almost 50K in the A3 portion and may have his Advanced ticket by this time. . . . "Who sez you can't work anyone on 6 meters — **K8MMM** gave me NR 286 after only 3 hours contest time!" — **WA8NVW**. Hmmm . . . "Forty meters never closed. I was constantly surprised by the Sixes that called me in the wee hours; couldn't even get a cat-nap. Biggest thrill was 3C8BB coming back to my CQ." — **K2UAR/2**. . . . "I thought some Novice operators were better than some General Operators. Had to go hunting through the Novice band to get the last of 75: Oklahoma!" — **WA0KXJ**. . . . This year's Edsel Murphy Award goes to the crew at **W0GHZ**, who report, "We heard on ten meters Sunday morning that the hamburger drive-in across the street was robbed. We had a clear view of it all night but nobody was watching." . . . What a pleasant jolt to get 49 c.w. logs from Connecticut and five multi-operator phone entries from — of all places — Montana. . . . "First evening of phone SS 75 meters was skipping to East Coast as if it were 10 meters." — **W6VUZ**. "The East and West Coasts have one thing in common: the Midwest stations with big signals." — **K3DVS/6**. "Had so much trouble finding an **SJV** station last year that I decided to pack my gear and portable quad and go there myself. But near the end of the contest I heard another **SJV** station giving numbers well above 500." — **K6YNB/6**. "Borrowed about 20 crystals — almost as good as a v.f.o." — **WN1HHA**. "Would have put in more time, but the USA skip up this way real good for only about 9 or 10 hours a day. The rest of the time you might as well spare the iron, for they just don't hear you." — **KL7JDO**. "I've had it! After nine years of Sweepstakes, I've decided that to go all out one more time would be sheer suicide. You can only go so far, and after a while operating skill becomes irrelevant, with physical endurance taking over as the deciding factor." — **K7CTI**. Want to bet that Mac won't be in there dispensing 600-or-so Montana QSOs again next year? . . . "Enjoyed contest very much. Hardest part was recopying the score sheet into my station log. Didn't find one lid in the entire contest. Everyone was very patient and considerate in the heavy QRM. My congratulations to everyone connected with Sweepstakes." — **WA9LED**. "Missed San Diego — thought I'd worked it early!" — **W3GAU**. "What a roaring and noisy challenge," marvels 15-year-old **VE1AKA**. "It was a weekend of constant distraction, with out-of-town visitors galore and domestic chores aplenty, but I did manage to have a ball and meet a new friend: **K5IIN** dropped in a week after the SS to shake hands and visit awhile. Next year we will both 'come out fighting' again, but until then we are the best of friends, hi." — **K5AEU**. Attention **W4KFC**: **K5IIN** lives on Signal



The loudest noise from Potomac-land was generated by **K1ANV**, who led **PVRC** on both phone (from **W3GRF**) and c.w. (from **W4BVV**). Gene was a big reason for that whopping club total!

Hill Drive. . . "One of the biggest advantages of using VOX is that you don't get the mike-stand dirty while you're eating." — *WB6KPN*. "Wasted many minutes trying to get my section across. One W3 even argues that there was no such section as Orange!" — *K0GJD/6*. "Suggest an expedition to Maine in 1968." — *W3AXW*. "Murphy struck about two o'clock: my mother." — *W3AMH*. . . One Central Division entrant was very emphatic in his avowal that he had operated alone, by himself, with absolutely no outside help, aid, or assistance. His score: 3. . . "With *everybody* calling CQ SS, who's left to come back to 'em?" — *WA9RPD*. "Screech-owl perched on dipole all night long — added two S-units to my signal." — *WN2CAL*. Calling H0OT, no doubt. . . "If this year's SS can be used as an indication, WPA may one day be as competitive as EPa and MDCI!" — *K3KMO*. "Ever try to find a drugstore that has a 6CL6 at 12:15 Saturday night?" — *VE2BMS*. "I wish that the only VO1 was answering calls instead of choosing who to call, and that the KP4 had given me an exchange, but that's life on 7 Mc! This was the best-mannered, most professional-sounding SS I have ever heard. It was as if *everyone* cared enough to send his very best." — *W5WQN*. "Forty meters was really great until the BBC came on." — *WN5IJR*. "Worked a KL7 for 50th state. Also worked other 'easy' sections like NWT, Wyo., KZ5, etc., but never even heard a San Diego or SF." — *WA9IXF*. "My apologies to those who had to QRX while I replaced the fuse in my keyer. Luckily I discovered the problem before running out of fuses!" — *WA3DCM*. "Used a small heater to ward off frostbite in my uninsulated 5' X 8' shack up on Kickapoo Mountain." — *WA5ATX/3*. "My cold made my ears ring so bad I couldn't tell the dits from the dahs." — *W3QMZ*. "Next year, back to the old VE3 prefix instead of 3C3, which I'm sure confused a lot of people. Missed Idaho for 70, because a W7 there refused to work anybody in the Test." — *3C3EEW*. . . After being dormant for 15 years, *VE9PJ* rejoined the SS madness and says, "My impression is that today there are more good c.w. operators than ever before." . . . "Happy to hear 10 open on Sunday. KH6J and KH6GGU/mobile running S9 with the beam the other way. Heard many rare sections: KL7, KP4, VE8, Wyoming, Nevada." — *K9UCR*. "First phone entry in several years and I overestimated my antenna and underestimated the QRM." — *K9HCK*. "After 4500 revolutions in 24 hours my 'CQ Sweepstakes' voice tape-loop and me were worn pretty thin. The tape-loop seemed to pull them in better than I could live. Hmmm. . ." — *K9LBQ*. . . In a thrilling intra-family c.w. contest, *W2ZVW* nosed out sibling rival *W1NJM*, 4756 to 3760. . . "Murphy, you dirty rat. Got in only 13 hours operating because of having to work both Saturday night and Sunday afternoon, thus few contacts — lotta tears. Going back to 2 meters, where I know I won't work anybody." — *K6ATT*. . . *W9SZR* and *W3DVO*, at the latter's QTH, racked up 611 two-ways in 73 sections on 40 c.w. Ray reminisces: "I was on the key and SZR was presumably asleep in the next room. He ran in and yelled, 'Get that NWT CQ' when I was fishing around and did not hear him and SZR zeroed the receiver for me. The guy apparently sleeps with one ear open for DX when there is a speaker blasting in the vicinity." *W9SZR* enjoyed no small measure of fame as *H18XAL*. . . "I feel left out, didn't work *W4KFCI*!" — *K3VXV/3*. Never mind, there were several people that didn't. One, two, three. . . "Sending with a straight key for 15 hours sure gets the arm tired." — *WB2ZEU*. "Herewith my ARRL Sweepstakes log for 1967. I have several excuses for it, like this: (a) Since I do not expect to be around for the next Canadian Centennial in 2067, I decided to use my Centennial 3C prefix. This is definitely a handicap in bauds! (b) Could not work the contest full time due to lack of sleep, as I was brutally forced to attend a wild party the night before the contest. (c) I need a new receiver. (d) Everybody else needs a new receiver. (e) A temperature inversion over Alliston during the contest. I couldn't get out! (f) A diabolical plot on the part of sections such as Vermont, Nevada, VE8, Oregon and others not to work me. (g) There must be others, but either I can't think of them or prefer not to mention them! It was a most interesting contest, though, and I hope to overcome all the aforementioned obstacles for the one next year!" — *3C3ON*.

THIRTY-FOURTH SWEEPSTAKES CONTEST

Scores are grouped by Divisions and Sections. . . The operator of the station first-listed in each Section is award winner for that Section unless otherwise indicated. . . Likewise the "power factor" used in computing points in each score is indicated by the letter A or B. . . A indicates d.c. power up to and including 150 watts (multiplier of 1.25 c.w., 1.5 phones), B over 150 watts (multiplier of 1). . . The total operating time to the nearest hour, when given for each station, is the last figure following the score. . . Example of listings: *W3GAU* 112, 333-508-74-A-19 or final score 112, 333, number of stations 508, number of multipliers 74, power factor of 1.5, total operating time 19 hours. . . An asterisk denotes Headquarters Staff members, ineligible for awards. Superscript one denotes Novice certificate winners. Multi-operator stations are grouped in order of score following single-operator station listings in each section tabulation.

Phone Scores

ATLANTIC DIVISION

Delaware

W3GAU 112,333-508-74-A-19
W3CKH 28,886-201-49-A-11
K3NMY 26,391-233-57-B-12
W3RMD 23,938-367-67-B-24
WA3DUM 15,122-147-32-A-15
W3IYE 14,766-107-46-A-9
W3NNK 1350-25-18-A-2

Eastern Pennsylvania

W3BES 153,144-714-72-A-24
K3MND 120,998-655-63-A-22
WA3CQW 120,998-655-63-A-22
W3GHM 108,155-507-70-A-20
K3QDV 94,500-500-63-A-19
K3QQQ/3 93,686-453-69-A-24
K3TUF 90,576-448-68-A-17
WA3DCM 86,784-452-64-A-24
WA3CEJ 71,082-361-16-A-19
K3DPQ 62,985-324-65-A-21
K3BNS 60,705-429-71-B-22
K3HTZ 56,200-403-69-B-16
K3PSW 52,366-269-66-A-18
W3QMZ 42,545-320-67-B-15
W3MWC 42,252-255-62-B-12
WA3FUE 42,210-340-63-B-21
W3KTT 31,659-173-61-A-13
W3EAN 30,210-266-57-B-12
WA3DSZ 30,040-220-44-A-10
WA3EVU 29,232-174-56-A-14
W3R3S 27,187-131-59-A-9
W3BGN 20,684-184-42-A-4
K3MCO 16,920-118-48-A-9
W3CGB 16,014-157-51-B-10
WA3DNV 14,040-121-39-A-14
W3BUR 5640-80-29-B-4
K3XYS 4805-80-31-A-8
WA3BSC 3881-56-23-A-4
W3CXO 1998-37-18-A-8
W3KDF 1581-31-17-A-2
K3LBB 1075-5-5-A-1
W3EQA 616-22-14-B-1
WA3CFZ 369-41-3-A-5
W3NLI 75-5-5-A-1
WA3CMD 75-5-5-A-1
WA3EMQ 60-10-2-A-6
WA3EGD (4 oprs.) 38,211-272-47-A-24

W3YF (5 oprs.) 36,040-265-68-B-21
WA3AAN (WA3s AAN HGX) 29,253-199-49-A-22

Maryland-D. C.

W3GRF (KLAN, opr.) 107,056-749-74-A-23
W3AZD 102,115-485-70-A-24
W3DPJ 102,115-485-70-A-24
W3EIS 95,050-475-66-A-24
WA3AMH 76,356-404-63-A-24
K3JYJ 72,355-335-71-A-18
WA3PHB 68,891-366-63-A-18
WA3ATG 66,306-436-66-B-16
WA3DSD 59,400-330-60-A-20
W3JPT 44,920-240-61-A-23
K3NPV 37,642-319-59-B-10
W3CSZ 36,423-214-57-A-14
W3KMW 29,559-169-59-A-19
W3R3S 29,104-214-63-B-14
W3EFZ 26,630-150-57-A-8
W3HVM 21,840-182-60-B-13
W3AXW 21,294-169-63-B-10
W3HRE 16,986-149-38-A-17
K3CYA 15,469-91-53-A-10
W3OTC 14,445-110-45-A-17
W3MSR 14,051-39-10-A-0
W3KDP 7245-69-35-A-6
W3MCG 2887-38-17-A-4
W3TMZ 1520-20-13-B-1
W3DVA 1351-13-9-A-2
WA3DNH 600-20-15-B-6
K3AE3 485-15-11-A-1
WA3EOP 3-1-1-A-1
W3ZKH (K3EST, W3s TMZ ZKH) 108,091-735-73-B-24

W3MVB (W3MVB, W0SZR) 85,000-600-70-B-23
WA3EPT (7 oprs.) 62,136-432-72-B-24
W3ADO (4 oprs.) 58,100-415-70-B-24
K3AIB (6 oprs.) 34,510-301-58-B-23
K3AIB (K3AIB, K0ECG) 31,995-197-54-A-19

Southern New Jersey

WA2BLV 101,008-463-72-A-20
W2OWB 80,640-385-70-A-24
WB2RVX 67,980-515-66-B-4
K2PZF 54,549-277-66-A-21
WB2BYF 45,837-233-66-A-17
WB2CGW 29,250-150-65-A-16
K2AGU 23,610-197-65-B-16
W2QDY 23,010-195-59-B-15
K2CPR 22,750-125-58-A-10
WA2DVU 21,240-177-60-B-10
WB2TEN/2 19,836-174-38-A-23
WB2UVB 19,026-151-42-A-20
W2OWA 16,554-194-42-A-24
WB2FOC 15,904-108-46-A-12
W2QJK 15,616-128-61-B-15
W2DAJ 13,800-138-50-B-5
W2PFG 11,316-92-41-A-13
W2UGL 10,488-92-38-A-14
W2QWJ 9720-90-36-A-13
WA2ZVY 8743-73-31-B-5
W2UEM 5880-70-28-A-15
W2EWN 1300-15-10-B-2
W2ITG 520-20-13-B-2
K2IEO 510-17-10-A-2
W2EWO 320-15-10-B-1
WB2SCK 260-10-0-B-2
W2PAU (W2s PAU) 72,820-346-70-A-23
WB2ZJR (W2s WRP ZJR) 16,014-158-34-A-9
WB2CPS (K2XBN, WB2CPS) 14,352-151-45-B-17

Western New York

WB2YNU 65,565-355-62-A-17
WB2RNB 47,025-275-57-A-13
W2ADN 44,982-296-51-A-19
W2YDX 43,216-296-73-B-18
W2DIZ 37,372-217-50-A-15
WA2BEX 35,400-200-59-A-9
WB2QH 34,200-200-57-A-11
WB2UJ 31,147-304-53-B-22
WB2SMD 26,116-161-52-A-12
K2CEI 22,133-114-66-A-13
WB2S/2 20,898-135-54-A-19
WA2GXC 19,296-134-48-A-10
W2SSC 13,230-105-42-A-10
K2KIR 10,179-89-39-A-4
K2SWT 9306-99-48-B-9
W2SNI 8960-112-40-B-10
W2CQW 6600-160-23-A-13
K2EQB 3540-89-20-B-2
W2ZCC 3300-50-28-A-4
WA2WHA 3219-37-29-A-8
WB2VVP 2272-44-21-A-5
WA2SWW 1800-45-20-B-4
W2GYY 1522-33-22-B-2
W2PDS 1352-45-15-A-1
WB2YQO 360-15-8-A-2
WB2VZO 18-6-1-A-1
W2HNE 3-1-1-A-1
WB2YUT (W2s OYE YUT) 37,779-259-49-A-24
WB2VZV (multiplier) 28,077-191-49-A-20
K2CC (WA2SJC, WB2AFS) 3976-72-28-B-4

Western Pennsylvania

K3KHK (K3AHT, opr.) 85,252-413-68-A-21
K3KMO 54,969-272-67-A-21
WA3GGV 47,125-364-65-B-18

K3FCK 45,000-250-60-A-20
 WA3ENR 41,013-217-63-A-20
 WK3QD 31,449-181-65-A-18
 K3SJS 25,828-247-44-B-16
 K3SJK 24,338-169-72-B-12
 WA3EJG 20,115-149-45-A-18
 WA3BRE 14,580-110-45-A-12
 WA3BRY 13,209-119-37-A-20
 W3NEM 8,741-39-29-B-5
 W3NLM 5400-75-38-B-6
 K3JUGM 5025-67-25-A-16
 W3WLF 2961-47-21-A-4
 WA3GUJ (4 oprs.)

67,200-350-64-A-24
 WA3HAE (WA38 AYU H3A
 HadV) 23,481-142-57-B-24
 WA3DET (WA38 BHM DET1)
 22,523-194-39-A-17

CENTRAL DIVISION

Illinois

K9NYG 114,161-560-69-A-18
 WA9LVJ 104,319-520-67-A-20
 W9JCK 101,013-445-75-A-24
 W9MFD 87,156-406-72-A-24
 WA9EOD 76,581-386-67-A-16
 K9HJZ 73,161-366-69-A-21
 W9GGE 71,614-300-42-B-24
 K9CZU 65,124-324-67-A-21
 WA9IVB 63,685-300-70-A-23
 W9YRU 55,074-412-67-B-21
 WA9RLL 51,913-258-68-A-22
 WA9OJD 48,149-163-67-A-21
 W9HVV 48,149-250-65-A-20
 K9JLQ 48,149-277-88-A-10
 WA9UCE/9

45,540-220-69-A-19
 WA9NWK 42,930-239-60-A-23
 WA9LED 42,930-239-60-A-18
 WA9TCW 33,284-200-56-A-15
 WA9RAQ 32,718-299-57-B-17
 W9JTT 27,888-166-56-A-16
 WA9RBC 22,688-139-55-A-12
 WA9NJB 20,140-116-55-A-11
 W9YDX 19,140-116-55-A-8
 K9VGT 17,955-143-63-B-12
 K9MDO 17,201-120-45-A-13
 WA9FXH 16,380-105-52-A-12
 WA9QCH 15,035-133-39-A-11
 W9OUS 12,120-101-40-A-13
 K9UCR 11,468-122-47-B-6
 W9JMY 10,490-81-35-A-10
 W9BVB 6510-70-31-A-4
 W9NLF 4800-50-32-A-5
 K9BQL 4320-60-36-B-6
 WA9EKJ 2700-45-20-A-5
 WA9KLU 45-5-3-A-1
 WA9HEU (multiopt)

133,809-611-73-A-23
 WA9NDK (WA98 NDK QBM)
 62,580-298-70-A-21
 W9EUN (7 oprs.)
 51,054-387-67-B-22
 W9BXU (WA98 KJL QOS)
 42,163-251-56-A-23
 WA9NFS/9 (K9UJK)
 WA9NFS) 32,712-282-58-B-19
 WA9TQW (WA98 RPD TQW,
 WN9UDX) 31,590-206-52-A-24
 WA9KVA (WA98 KVA RXX)
 23,036-222-62-B-24

Indiana

WA9ITB (WA9NFS, opr.)
 155,925-64-75-A-24
 W9ZRK 141,885-605-74-A-18
 K9DVZ 100,013-447-75-A-24
 K9UCY 70,409-323-73-A-23
 WA9AUM 60,858-322-63-A-13
 WA4WIN/9
 59,904-312-64-A-20
 46,400-250-63-A-14
 WA9ACZ 35,452-262-44-A-20
 WA9SSM 28,379-242-59-B-13
 K9UBF 22,593-222-34-A-17
 W9RJD 18,144-168-54-B-13
 WA9TKK 9045-101-30-A-13
 W9JVF 6100-50-31-B-9
 K9HCK 3100-50-31-B-9
 W9VDB 3038-49-31-B-6
 W9DGA 1180-15-6-B-1
 K9UKM/9 816-24-17-B-1
 W9UEM/9 750-21-12-A-6
 WA9HFM (WA98 TFKH
 TJJ) 58,216-299-64-A-23

Wisconsin

W9YTT (K9KGA, opr.)
 147,298-664-74-A-24
 K9LBO 142,750-876-70-A-24
 W9RQM 135,570-876-70-A-24
 WA9JDT 60,410-320-63-A-16
 WA9NVT 55,168-298-61-A-18
 W9GMV 44,680-312-70-B-20
 WA9ETL 44,239-250-58-A-20
 W9RXJ 40,558-218-65-A-18
 WA9SSQ 30,733-188-53-A-15
 WA9HCZ 30,444-190-73-A-24
 W9HZE 28,600-221-65-B-6
 K9HFR 18,136-109-48-A-12
 WA9NSR 13,168-104-39-A-8
 K9VUJ 10,388-106-49-B-10
 W9UUM 9988-82-18-B-6
 WA9RKL 86-73-34-A-8
 W9NYJ 6990-117-20-A-7

WA9EDU 3591-60-21-A-8
 WA9TZU 3270-55-20-A-6
 K9KSA 2930-31-20-A-3
 W9NUW (WA98 RAK, opr.)
 1288-28-15-A-2
 W9VHA 720-20-12-A-2
 WA9NDV 240-16-5-A-1
 K9GDF/9 189-9-7-A-1
 W9HHX (4 oprs.)
 91,944-640-72-B-24

DELTA DIVISION

Arkansas

WA8RT 45,143-233-65-A-16
 WA5QPI 37,982-225-57-A-15
 WA8KQU 7110-80-30-A-10
 Louisiana
 W5WUM 168,140-789-71-A-24
 WA8LGO 103,275-459-75-A-21

K4LIA/4 2795-42-23-A-4
 WB4AXQ 792-44-18-A-2
 WA4SMS 750-19-14-A-3
 WA4RA 683-15-18-B-1
 W4LDL 600-25-12-B-1

Michigan

K8SZU 149,163-660-75-A-23
 W8SPZG (WA8SPZ, opr.)
 110,547-520-71-A-24
 71,273-366-A-18
 67,340-367-20
 W8QWG 62,125-451-71-B-23
 K8BGZ 58,378-262-73-A-24
 WA8RJU 54,036-310-07-A-24
 W8TBF/8 49,572-365-68-B-20
 K8UJL 47,286-222-71-A-18
 W8QGL 46,987-366-64-B-18
 WA8GGN 35,472-172-67-A-17
 W8ELE/8 33,256-169-64-A-14
 W8DQL 25,465-234-55-B-8
 WA8U8Q 21,328-244-42-B-11
 W8DUS 20,880-183-58-B-7
 W8TDF/8 15,872-124-64-B-10
 WA8VYU 14,970-164-30-A-19
 W8MFU 11,400-114-50-B-13
 K8MFO/8 6090-70-29-A-2
 WA8SOP 5175-70-25-A-5
 WA8KME 3760-40-23-A-5
 W8JDM 3250-74-22-B-5
 W8NBN 2862-53-27-B-8
 WA8MCG 1733-28-21-A-4
 WA8MAM 1486-20-9-A-7
 W8F8Z 1125-25-15-A-3
 W8WVY 616-22-14-B-1
 WA8VQY 300-10-0-A-1
 WA8SKG 60-5-4-A-1
 WA8LAY (W8CRP, WA8S
 LAY QCW) 60,480-280-72-A-21

"CLEAN SWEEP" HONOR ROLL

Worked All 75 Multipliers

Phone: W2RLM WA2BVU W4KFC
 K5AEU K5IIM WA5CBE WA5LGO
 W6TZN WA6IVN WB6WEG W7BUN
 WA7FFU K8HZU WA8MCR K9DVZ
 W9JCK WA9ITB W9IYH W9SOZ
 WA9CHH* WA9SDC



C. W.: K1EUF W1BIH W1EOB W1TS
 WA1DJG W1BGD/2 W2SZ* K3HTZ
 W3BES W3DPJ W3GHM WA3EPT*
 K4AEV K4BAI K4CG K4VDL* W4DVT
 W4FRO W4KFC W4MCM W4NQA
 W4PTR WA4UBH/4 K2EJU/5 K5LZO*
 K6AEH W6RW K7CTI K7RAJ K7UKC
 WA7CSK K8KFP K8UDJ W8SH W8UM
 W9YT WA9KXJ WA9SDC
 * multioperator

DAKOTA DIVISION

Minnesota

WA9KDS 93,671-484-69-A-22
 K9IUZ... 86,184-400-72-A-24
 WA9KFC 79,858-413-65-A-22
 W9EY M 65,637-334-66-A-24
 WA9JKT 49,093-349-69-B-22
 W9IVZ 24,771-150-53-A-9
 WA9QAK 7410-65-38-A-9
 K9BPT 4368-52-28-A-8
 WA9FWC/9 4176-87-16-A-9
 W9A (W9TKX, opr.)
 1539-27-19-A-6
 W9YDX 1162-14-6-B-2
 W9TJS 1001-1-1-A-1
 WA9CJU (8 oprs.)
 129,717-619-71-A-24
 W9YC (5 oprs.)
 60,652-327-67-B-24

North Dakota

W9SHC (WA9HYL, opr.)
 154,505-719-75-A-23
 129,275-376-67-A-24
 WA9NTY 48,564-284-57-A-16
 WA9PPK 28,305-185-51-A-17
 K9FRP 12,168-105-39-A-12
 WA9LJN 5856-61-32-A-8
 K9RSA/9 1716-33-26-B-4

South Dakota

WA9CPX 110,947-551-67-A-21
 K9OZT 19,458-138-47-A-8
 WA9OML 4617-62-27-A-16
 WA9QMV 624-16-13-A-3
 K9VYV (W9GKC, W9AQC)
 167,112-775-73-A-24
 W9BXO (WA9S ARZ DNG
 MWN) 67,600-373-60-A-22

K5AGI 94,032-641-73-B-22
 W5ERR 56,175-275-67-A-20
 WA5MMD 34,733-211-55-A-23
 W5QPS 31,920-190-56-A-16
 WA5KAJ 25,480-165-51-A-6
 W5JFB 19,188-123-52-A-9

Mississippi

K5IIN 102,075-681-75-B-24
 K5AEU 85,575-575-75-B-18
 K8SVK 76,212-438-58-A-14

Tennessee

K4PUZ 167,610-758-74-A-24
 K4UWH 58,563-305-64-A-13
 W48QE 54,610-263-70-A-21
 WA9GG 25,926-149-58-A-12
 W9BDM 7152-78-32-A-6
 W4ACM 5932-77-33-B-14
 WA4COU 2754-51-18-A-4
 WA4YNE 1917-36-24-B-6
 WA4ZU 300-10-10-A-15
 W4ODR (WA1EVN, W8BEIU,
 W9MFK) 58,145-329-50-A-19
 WA4UCE (5 oprs.)
 48,620-374-65-B-14
 W4BEHK (WB4S EHK FNN)
 2550-51-25-B-16

GREAT LAKES DIVISION

Kentucky

K4RZK 59,760-415-72-B-14
 WA4UAZ 55,489-392-70-B-14
 W4CVI 59,932-229-73-A-15
 W4NVT 48,723-232-70-A-23
 10,881-93-39-A-11
 W4HTQ 9291-82-38-A--

Ohio

K8SDOC (WA8LEO, opr.)
 178,707-841-71-A-24
 W8ILC 147,742-681-74-A-24
 WA8MCR 146,913-651-75-A-21
 W8MEL 85,420-610-47-A-24
 W8WPC 128,677-583-73-A-22
 W8XQX 93,907-419-74-A-22
 WA8RWU 81,342-368-73-A-20
 WA8PZA 81,282-437-62-A-20
 K8BXC 77,800-400-64-A-10
 W8TDF/8 72,989-119-8-A-16
 K8EJU 70,720-332-70-A-23
 W8HSK 62,380-341-60-A-19
 WA8TKW 49,647-247-67-A-18
 W8SSU 49,446-240-67-A-19
 W8XMC 45,606-222-71-15
 K8BML 42,163-330-71-B-6
 WA8UQH 47,637-237-67-A-18
 W8YHU 46,647-219-71-A-21
 W8WDU 44,313-264-55-A-22
 WA8SLW 43,875-225-65-A-20
 WA8VQK 42,980-260-54-A-14
 K8RMJ 42,102-280-53-A-13
 W8ZJM 40,187-185-73-A-13
 W8CEA 39,544-176-73-A-13
 W8VQJ 37,400-275-68-B-22
 WA8BZE 36,326-194-61-A-17
 W8TDF/8 35,720-156-68-A-15
 W8UPH 33,320-151-53-B-19
 W8DWP 32,792-156-68-A-15
 W8HQX 30,426-252-39-A-22
 29,993-223-65-B-14
 28,984-212-66-B-11
 W8VZE 28,989-130-40-A-16
 W8LHV 27,984-212-66-B-16
 W8TKM 27,750-185-50-A-20
 W8AJV 27,361-153-58-A-10
 W8USP 27,196-148-59-A-10
 WA8F8Z 26,489-173-51-A-16
 W8F8Z 26,489-173-51-A-16
 WA8XCV 25,740-131-66-A-20
 22,800-220-57-B-15
 24,888-136-61-A-16
 24,868-204-39-A--
 24,255-193-63-B-19
 23,142-183-58-A-8
 21,475-175-39-B-1
 WA8LJR 21,370-196-35-A-20
 21,079-146-46-A--
 21,000-125-56-A-11
 20,433-138-49-A-8
 WA8UHN 19,960-133-50-A-13
 WA8JUJ 19,225-133-45-A-14
 W8DZG 16,390-114-45-A-10
 W8OYL 15,795-117-45-A-9
 W8NHO 15,744-164-48-B-18
 W8IDM 15,613-108-45-A-9
 15,400-121-40-B-13
 WA8EYA 15,150-152-50-B-12
 K8ISS 14,664-104-47-A-13
 WA8ZDK 13,852-102-42-A-11
 W8VYU 13,789-147-29-A-7
 WA8RQL 12,817-101-39-A-7
 W8LIZ 12,817-101-39-A-7
 K8NEB 12,700-100-39-A-9
 W8BIM 12,300-100-41-A-8
 WA8F8Z 12,150-135-30-A-15

W8YCP 12,088-77-72-B-7
 K8STP 19,190-104-35-A-15
 W8GSD 10,750-130-25-A-12
 K8SWE 8708-64-44-A-6
 WA8TYF 7830-87-30-A-4
 W8ENH 6615-65-34-A-3
 W8EKI 6615-65-34-A-3
 K8SHD 6612-87-38-B-7
 W8GMK 6200-65-40-A-7
 WA8NYS 5394-62-29-A-5
 W8AEB 4150-42-25-A-4
 K8CQA 3564-60-24-A-6
 W8TWJ 2071-26-1-B-3
 W8SRCN 2220-37-20-A-3
 W8POR 1924-22-14-A-5
 WA8IGD 1824-38-24-B-4
 K8SEV 1750-25-10-A-1
 WA8SCZ 1408-32-22-B-2
 WA8RMV 1405-46-3-A-16
 WA8NWF 2071-26-1-B-3
 W8ASGV 985-29-17-B-6
 WA8LWH 675-25-9-A-3
 W8MOH 405-15-9-A-3
 WA8WSP 111-37-1-A-10
 W8TNF 81-9-3-A-3
 K8HS 13-1-1-A-1
 WA8VBY 13-1-1-A-1
 K8WBL (4 oprs.) 69,510-499-70-B-23
 W8EDU (6 oprs.) 59,100-415-68-B-24
 WA8IXI/8 (8 oprs.) 49,680-280-60-A-24
 W8GYG (KAJYN, WA8WRO) 11,610-130-45-B-7

HUDSON DIVISION

Eastern New York
 WIBGD/2 72,820-380-63-A-11
 K2UAW/2 50,268-285-59-A-24
 W2HES 38,584-311-62-B-16
 WB2UUD 23,072-264-14-14
 WB2ZCZ 27,202-235-58-B-24
 WB2ROU 23,220-180-43-A-13
 WB2YIL 7161-17-31-A-9
 W2IPI 1425-25-19-A-4
 WB2FXB 360-15-12-B-2
 W2S2 (7 oprs.) 64,860-473-69-B-24
 K2RDM (F2YS, K2RDM) 56,680-447-65-B-24
 W2KGY (7 oprs.) 49,660-382-65-B-24
 W2AEE (WA2EN, LEN) 15,545-121-43-A-14

New York City — Long Island
 W2RLM 198,550-349-75-A-24
 WA2BVU 15,235-690-75-A-24
 WA2FTS 89,970-637-70-B-24
 WB2ZTQ 84,904-443-64-A-24
 WA2QEB 62,370-330-63-A-20
 WA2AJR (WA2UWA, opr.) 55,800-310-61-A-19
 W2LEJ 41,846-343-61-B-23
 WB2YJZ 38,115-231-55-A-24
 WB2UZL 32,712-188-58-A-15
 WB2YKU 26,100-150-58-A-18
 WB2ZBM 23,100-210-55-B-13
 W2ZYV 21,100-205-A-16
 W2WKKZ 19,728-149-62-B-10
 WB2ZKJ 18,840-158-40-A-18
 K2RAR 17,192-154-56-B-8
 WB2VIA 9324-126-37-B-9
 WB2MJD 7020-78-30-A-6
 WB2SZZ 6820-67-32-A-6
 WA2AFC 4526-74-31-B-15
 WB2ROV 2160-45-16-A-8
 WN2DBA 1434-64-7-A-17
 WB2HTW 1380-19-10-B-3
 W2TUK 1050-25-14-A-1
 WB2QIL 1025-3-3-A-2
 WB2VFP 840-10-8-A-4
 W2UNS 120-10-4-A-2
 K2HGR 36-5-4-B-1
 WB2OLD 10-3-2-B-1
 WB2VYM (WB2s MVA, VYM VZC) 101,760-530-64-A-24
 WB2UIY (WB2s UIY ZGG) 88,255-418-70-A-24
 WB2ZAB (WB2s ZAB ZQE) 61,620-316-65-A-24
 WA2PXB (4 oprs.) 54,660-458-60-B-20
 W2DSC (WA2s APT UNC) 31,784-274-58-B-17
 WB2UNT (WB2s MGH PUX UNT) 29,040-177-55-A-18
 WB2UOA (WB2s UOA UPB) 16,667-139-41-A-12

Northern New Jersey
 WB2SSZ 116,513-605-65-A-20
 W2JKH 87,296-67-67-B-24
 W2NNL 76,500-375-68-A-20
 W2DMJ 72,252-336-72-A-19
 WB2WIX 43,680-371-59-B-18
 W2WE 25,984-205-64-B-16
 WB2UAQ 25,521-181-47-A-22
 WB2KNN 21,204-186-38-A-24
 WB2RKH 17,780-148-40-A-19
 WA2ASM 17,066-161-53-B-11
 F3VN/W2 16,060-146-55-B-13
 WB2ZCI 15,415-155-31-A-13
 W2QFC 12,960-135-48-B-14
 W2ECC 12,940-104-3-A-11
 WB2VLC 11,530-135-26-A-13

WB2ZCJ 11,125-125-27-A-13
 WB2TSY 10,120-110-46-B-10
 WB2JYM 5346-66-27-A-4
 WB2LDV 5100-75-34-B-5
 WB2QGB 4050-50-27-A-3
 W2QVY 78,206-35-21-A-3
 WB2YBE (WB2RKK, opr.) 1428-34-14-A-1
 W2GLQ/2 (4 oprs.) 85,630-434-65-A-24
 WB2HLH (WB2s HLH HMS) 56,476-276-67-A-18

MIDWEST DIVISION

Iowa
 WA0LEW 136,728-636-72-A-24
 WA0SDC 121,750-805-75-B-22
 WA0ETE 80,356-389-68-A-20
 W2CVY 78,296-359-70-A-24
 WA0PUJ 78,296-354-71-A-23
 WA0KXJ 41,654-355-59-B-23
 W0IYR 34,200-228-75-B-19
 WA0PTV 17,959-129-46-A-21
 WA0JSD 2442-37-22-A-3

Kansas
 K0RNRZ 104,932-736-74-B-24
 W9ECV/0 67,065-460-73-B-23
 WA0LGS 44,510-236-63-A-18
 WA0KDI 38,044-196-63-A-19
 WA0PJI 24,645-155-53-A-13
 W0SIV 17,852-102-42-A-11
 W0LKA 11,880-110-54-B-6
 WA0JRX 6384-84-38-B-9

Missouri
 WA0EMS 147,621-673-73-A-23
 W9DWS 103,356-481-72-A-20
 W0KED/0 77,952-406-64-A-16
 K0DEQ 58,942-394-74-B-19
 W0PEM 50,266-238-69-A-22
 K0VVH/0 46,072-315-72-B-23
 K0REV 45,549-362-63-B-17
 W0FCV 35,400-200-59-A-16
 K0BPI 25,472-200-64-B-11
 W0SOZ 24,600-164-75-B-16
 WA0PFW 18,156-165-51-B-12
 W0ULV/0 16,660-116-45-A-15
 K0BTV 10,260-114-45-B-6
 W0SIV 3700-50-18-A-4
 WA0PUL 1242-25-18-A-12
 WA0CHH (4 oprs.) 172,563-764-75-A-24
 WA0JBY (5 oprs.) 61,030-437-69-B-24
 W9ZLN 46,984-371-63-B-24

Nebraska
 WA0HSX 125,542-611-88-A-23
 K0CVA 121,764-834-73-B-22
 K0LFA 60,522-459-96-B-19
 W0AVO 45,504-320-72-B-19
 WA0GVJ 30,600-170-60-A-8
 WA0OPQ 26,280-219-60-B-19
 WA0KAQ/0 12,160-94-40-A-11
 K00DF 11,586-89-41-A-8
 W9WLO 9491-87-37-A-9

NEW ENGLAND DIVISION

Connecticut
 KIHTV 108,676-501-72-A-24
 W1CSM 87,265-405-71-A-24
 WK1NY* 84,214-414-67-A-23

W1BIB 72,388-331-72-A-13
 WIARR/1* 52,020-437-60-B-13
 K1DDP 40,455-220-62-A-18
 WA1FIR 34,047-291-39-A-24
 WA1FGN 32,256-224-48-A-12
 WA1FJK 22,545-167-45-B-12
 K1LWC 22,313-214-53-B-12
 WA1ED 14,184-99-48-A-9
 K1MOT 10,824-123-44-B-10
 WA1DJG 6045-65-31-A-4
 W1EEN* 1045-5-3-A-1
 K1WIM/1 (K1s WIM YXK) 61,132-451-68-B-21
 WA1CJE (W1s CJE CYT) 15,210-130-39-A-14

Eastern Massachusetts

K1KNI 91,825-435-70-A-24
 WA1EOT 73,216-354-68-A-24
 WA1FZK 42,770-333-65-B-16
 WA1HRG 31,286-195-54-A-17
 K1KZL 30,739-266-59-B-23
 K1YRG 25,821-151-57-B-9
 W1PLJ 7181-84-43-B-9
 W1BEG 5560-60-38-B-10
 W1RFP 4290-52-3-A-8
 WA2ZEW/1 4704-50-32-A-10
 K2AJA/1 627-19-11-A-1
 W1KBN (4 oprs.) 95,777-483-67-A-23
 W1FV (5 oprs.) 91,228-174-61-B-12
 WA1FMM (W1s FMM HES) 29,253-200-49-A-16

Maine

55,948-395-71-B-16
 91,228-174-61-B-12
 1,900-100-47-B-8
 2704-52-26-B-6

New Hampshire

W1BUT 47,410-432-55-B-19
 WA1HXH 11,736-163-24-A-12

Rhode Island

K1LPL 178,904-819-72-A-24
 W1KMV (K1YUN opr.) 127,980-598-72-A-20
 W1YNP 100,232-755-67-B-20
 WA1FNK 49,860-277-60-A-19
 K1KYT 45,933-251-61-A-23
 K1RMO 39,564-314-63-B-24
 WA1EEJ 11,488-152-23-A-10
 K1YDA 990-132-25-A-11
 WA1GND 3692-17-26-B-10

Vermont

W9BLQ/1 1-1-1-B-1

Western Massachusetts

K1KNQ 98,601-476-69-A-23
 K1KDP 87,536-436-67-A-24
 K1DQG 48,393-283-57-A-21
 WA1GIH 21,242-145-49-A-12
 W1E0B 17,464-98-56-A-8
 K1YK (K1s THG TKR) 11,488-152-23-A-10
 W1E0B (K1s THG TKR) 48,591-259-63-A-19

NORTHWESTERN DIVISION

Alaska
 K1LTF 33,800-260-65-B-14
 K1TAIZ (4 oprs.) 71,001-567-63-B-23

Idaho
 W7IY 19,000-100-40-A-21
 WA7EWW 10,600-81-40-A-9

Montana

W7TYN 88,332-433-68-A-20
 WA0ATY/7 33,488-264-62-B-21
 WA7BQS 28,236-181-52-A-13
 K7LTV/7 21,840-130-56-A-13
 K7PGL 10,800-90-40-A-1
 W7CBY 5106-69-37-B-5
 WA7BKW (WA7s BKW CWF DCF) 108,000-525-72-A-24
 WA7IY (K7IY) 73,390-391-67-A-23
 WA7IQY 73,390-391-67-A-23
 W7ED (WA7s GHW HOD IAL) 60,300-336-60-A-24
 K7CTI (K7CTI, WA7DMA) 55,800-300-62-A-13
 W7FO/7 (7 oprs.) 39,323-255-59-B-23

Oregon

K7WWR 66,030-310-71-A-18
 K7STK 38,336-301-64-B-11
 K0YSW/7 10,578-86-41-A-12
 W7ZUL (K7HBN, W7ZUL IAL) 73,485-355-69-A-21
 WA7EFP (WA7s EFP HVM) 72,009-384-63-A-22

Washington

W7BUN 122,500-540-75-A-20
 K7UKC 114,318-786-73-B-24
 WA7FPU 75,800-502-75-B-24
 K7ONH 65,856-417-64-A-21
 WA7BHH 58,372-304-54-A-18
 W7IEU 15,835-115-43-A-12
 WA7CXD 8920-80-33-A-5
 K7INE 8600-100-43-B-4
 W7CJL 8325-75-37-A-12
 K7CZC 5699-70-41-B-9
 K7RSB 4950-15-11-A-2
 K7IND 4284-51-28-A-9
 WA7ACQ 2772-42-22-A-4
 K7KYG 2188-22-18-A-6
 K7EKK 2016-42-16-A-7
 WA7IOL 1260-30-21-B-9
 K7VFF 450-15-10-A-3
 W7OS 12-2-2-A-1
 WA7FID (4 oprs.) 14,382-141-51-B-13

PACIFIC DIVISION

East Bay
 WA6IVN 176,400-793-75-A-24
 W6VNH 69,877-480-73-B-18
 W6BBD 13,974-137-51-B-8

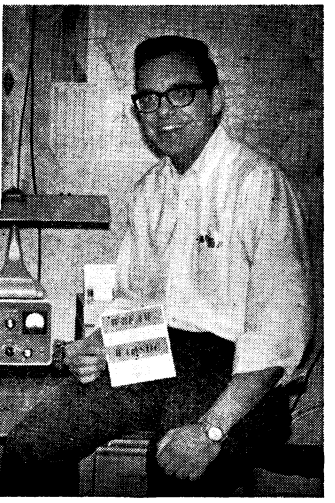
Hawaii
 KH6IJ 75,744-526-72-B-20

Nevada
 W7EJU 44,744-332-68-B-20
 WA7DIA/7 10,047-100-34-A-8

Sacramento Valley

W6BUNP 79,074-357-73-A-24
 W6BZXZ 70,380-340-69-A-19
 W6BWLZ 38,513-198-65-A-13
 WA6ITJ 8820-70-42-A-7
 W6VUZ 3096-43-24-A-4

Whether he's in Iowa, Michigan, or Ouagadougou, enthusiastic WA0SDC can always be counted upon for a superlative performance in any contest. Tom (who formerly operated W8UM while at the University of Michigan) demonstrated his SS versatility by racking up 121K on phone and 122K on c.w., and joined W4KFC (who else?) in the difficult feat of sweeping clean on both modes.



San Francisco
W6BIP 45,360-216-70-A-18
K3DVS/6 1173-23-17-A-3

San Joaquin Valley
K6YNB/6 118,104-534-74-A-21
W6TZN 77,550-517-75-B-24
W6HYK 1612-31-26-B-3

Santa Clara Valley
WB6ZGJ 59,228-442-67-B-19
WB6MOE 22,272-193-58-B-17
W6ISQ 5310-59-45-B-1
W6ATZLN 429-13-11-A-2
K6LY (5 oprs.) 81,622-565-74-B-24

ROANOKE DIVISION

North Carolina
W4NQA 95,973-652-73-B-22
W44FW 56,780-427-68-B-21
W441E 31,584-189-56-A-19
K4EWF 20,448-96-71-A-14

South Carolina
K4WJT 193,918-870-74-A-24
W4YDD 108,524-517-71-A-19
W44VZK 87,437-412-71-A-13

Virginia
W4BVV 112,887-512-74-A-19
K4CG (K3WUW, opr.) 111,528-776-72-B-24
W4KFC 108,900-706-75-B-20
W4PTR 93,820-442-70-A-19
K4CCG 92,556-429-72-A-23
W4DKU 77,479-346-74-A-22
W4ZM 61,588-306-66-A-15
K4VLD 53,064-270-66-A-19
W4YGY 48,250-226-70-A-17
K4ORQ 42,315-228-62-A-18
W4JVN 39,060-211-62-A-12
K4ZA 26,380-141-60-A-15
W3IZL/4 24,825-166-50-A-11
W4WBC 23,230-143-52-A-14
K4AEV 21,532-160-45-A-6
K4ASU 20,440-150-68-B-6
W4MJO 20,224-180-54-B-17
W4PHL 12,218-92-45-A-10
K4JQO 10,280-129-40-B-12
K4CBP 9936-138-36-B-16
WB4HIP* 9309-107-29-A-1
W4GF 9062-100-46-B-6
WA4KYR 8876-90-44-B-6
W4YZC 7095-22-11-A-3
WB4BLJ 2254-49-23-B-6
W4OP 1180-28-20-B-4
WA2UFI/4 1018-3-3-B-1

West Virginia
WASVQT 60,940-558-55-B-24
WAS7WR/8 1134-27-14-A-3
WASUUY 48-10-2-A-10
K8SQZ 8-2-2-B-1

ROCKY MOUNTAIN DIVISION

Colorado
WA9CVS 148,355-702-71-A-23
K6JGF 88,775-689-67-B-16
W6KYI 54,992-302-61-A-17
W6BWW 15,616-87-56-A-8
W5NML/6 8992-74-36-A-5
K9GVA 4154-67-31-B-6
W0HEP/0 2565-45-19-A-6
W0ATA 311-12-9-A-2

New Mexico
WA5QJQ 84,533-440-65-A-15
W5MYM 48,328-247-64-A-21
WA5POK 38,661-265-49-A-16
K6STL 12,087-119-34-A-5

Utah
K7RAJ 138,106-622-74-A-23
W7CYH 78,730-687-66-B-22
W7GXC 66,990-391-58-A-22
W7AUA 31,713-163-63-A-7
W7AHQU/7 (K7QEZ, W7AHQU)
WA7EVI (W7As EVI QGD) 65,205-311-70-A-24
WA7EVI (W7As EVI QGD) 25,300-176-50-B-22

Wyoming
WA7EWC 99,087-463-71-A-24
W7TSM 44,856-405-56-B-16
WA7DNZ 8991-81-37-A-3

SOUTHEASTERN DIVISION

Alabama
W4USM 39,367-203-63-A-9
W4AKS 28,275-192-50-A-13
W4HFU 23,272-128-58-A-11
W4DS 18,492-134-69-B-13
W4ZNI 16,146-104-52-A-12
W4AQVQ 15,821-100-55-A-6
K4IKR 15,444-99-52-A-6
W4NLI 15,180-110-46-A-4
WA4RBH 3864-43-23-A-4
WB4EOW 84-7-4-A-6
WB4BNO (WB4s BNO RNP) 60,882-280-73-A-24

Canal Zone
KZ5FX 47,817-255-63-A-1

East Florida
W44PXP 174,886-798-73-A-24
W4PZV (W44SVO, opr.) 123,516-570-73-A-24
W44VLO 76,582-371-68-A-23
W44LFP 65,789-363-61-A-20
W44VBN 58,080-305-64-A-15
W44UFW 55,068-344-52-A-18
W4PKD 4864-64-38-B-16
W4ILE 297-11-9-A-1

K4IXG 171-10-9-B-1
WA4RDA (4 oprs.) 19,580-181-55-B-12
W4SVX (K4GIE, W4SVX, WA4COD) 16,072-165-49-B-21

Georgia
K4BAI 137,944-635-72-A-24
WB1DWD 120,855-589-70-A-15
K4RIN 56,004-359-52-A-15
WA4YEJ 52,740-293-60-A-17
WB4AJR/4 16,952-164-52-B-9
K4FLA 4959-57-29-A-5
K4EZ 3712-58-32-B-3
WB4HSG 3-1-1-A-10
K4YSG (K4s NVN YSB) 77,724-383-68-A-24
WB4FWK (WB4s EMF GDO) 26,776-180-48-A-12
WB4FAM/4 (W4WKF, WB4FAM) 1156-34-17-B-3

Western Florida
WA4VIY 57,960-415-70-B-24
WA4EPH 2000-40-25-B-4
WA4ECY (4 oprs.) 83,785-644-65-B-24

West Indies
KP4BJD 67,728-505-68-B-20
KP4DBJ (W49QJB) 22,275-165-45-A-13

Arizona
K7PXI 114,099-521-73-A-22
W7FCD 33,174-194-57-A-10
W7HNF/7 9177-81-38-A-6
WA7ERH 2040-34-20-A-1

Los Angeles
WB6HGU 107,139-507-71-A-24
WB6YKM 94,424-642-74-B-24
WB6UHF 72,863-644-67-A-24
WB6KPN 67,001-356-63-A-22
K6YFZ 62,928-305-69-A-17
K6BEP 44,640-242-62-A-22
WB6TNS (K6OIZ, opr.) 22,792-206-56-B-14
W6SBB 21,216-136-52-A-14
WB6TVH 20,727-141-49-A-24
WB6JOI 16,832-116-49-A-13
W6EIG 13,745-94-49-A-9
WB6ROR 12,771-99-43-A-13
W6QYT 9204-119-30-B-5
WB6ZEP 7440-80-31-A-9
W46STJ 7161-77-31-A-9
K6QFG 4752-73-33-B-11
WB6ARH 3456-49-24-A-6
WA6RQQ 2553-37-23-A-6

SOUTHWESTERN DIVISION

California
K9GJD/6 151,416-701-72-A-24
WB6UDC 99,960-490-68-A-22
WB6WEG 89,213-399-75-A-20
WB6FCF 63,054-339-62-A-23
W46WFW 16,335-149-55-B-18
WB6YXP (W6DLE, WB6s WRX ZID) 78,660-380-69-A-12

Northern Texas
K5RHZ 186,276-758-74-A-22
WA5CBE 144,788-644-75-A-24
WA5LUM 99,070-470-70-A-23
W5TMM 94,973-509-63-A-20
WA5QXD 86,940-621-70-B-21
K5BWK 66,980-502-68-B-24
WA5QER 63,440-522-61-B-24
WA5NGH 62,937-335-63-A-22
W5QZG 58,500-300-65-A-21
W1ZGH/5 33,432-199-56-A-1
K5WJQ/5 1431-27-18-A-6
WA5QQQ (WA5s QQQ QQR) 60,583-369-55-A-24
WA5QEZ (WA5s PQR QZR) 38,830-353-55-B-23

Oklahoma
K5JIT 55,965-288-65-A-19
K5HWO/5 1275-36-17-B-5
WA5RMP (WA5s QJ RMP) 37,497-221-58-A-24

Southern Texas
K2EUT/5 132,202-591-74-A-24
K5ATT 57,888-304-64-A-13
WA5SFO 31,311-215-49-A-18
K5JCC 24,675-239-55-A-5
WA5AOI 22,278-159-47-A-6
WA5LVJ 19,030-175-55-B-1
W44YPM/5 18,750-188-50-B-16
WB2LZF/5 9916-74-67-B-13
WA5GZX (WA5s GZX QVE RLZ) 70,174-384-61-A-23

Orange
K9GJD/6 151,416-701-72-A-24
WB6UDC 99,960-490-68-A-22
WB6WEG 89,213-399-75-A-20
WB6FCF 63,054-339-62-A-23
W46WFW 16,335-149-55-B-18
WB6YXP (W6DLE, WB6s WRX ZID) 78,660-380-69-A-12

San Diego
K6JLJ 21,709-117-59-A-12

Santa Barbara
W6RFU (WB6DPV, opr.) 36,380-270-68-B-14
W6GEB 17,316-111-52-A-9
W6BHZ (W4CWM, opr.) 11,880-90-45-A-12

WEST GULF DIVISION

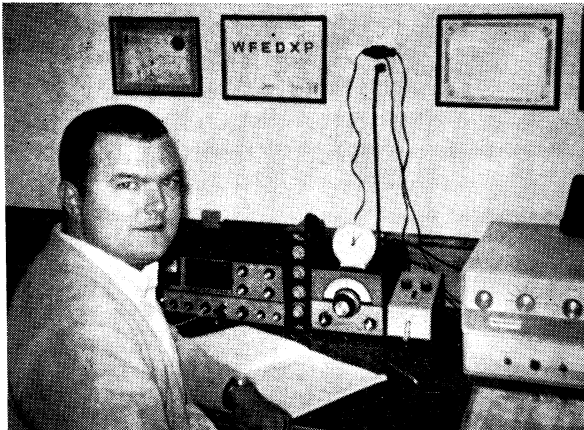
Northern Texas
K5RHZ 186,276-758-74-A-22
WA5CBE 144,788-644-75-A-24
WA5LUM 99,070-470-70-A-23
W5TMM 94,973-509-63-A-20
WA5QXD 86,940-621-70-B-21
K5BWK 66,980-502-68-B-24
WA5QER 63,440-522-61-B-24
WA5NGH 62,937-335-63-A-22
W5QZG 58,500-300-65-A-21
W1ZGH/5 33,432-199-56-A-1
K5WJQ/5 1431-27-18-A-6
WA5QQQ (WA5s QQQ QQR) 60,583-369-55-A-24
WA5QEZ (WA5s PQR QZR) 38,830-353-55-B-23

Oklahoma
K5JIT 55,965-288-65-A-19
K5HWO/5 1275-36-17-B-5
WA5RMP (WA5s QJ RMP) 37,497-221-58-A-24

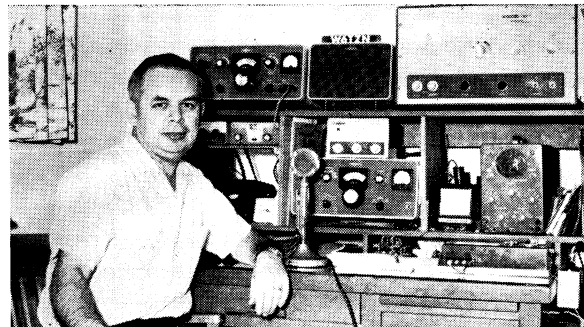
Southern Texas
K2EUT/5 132,202-591-74-A-24
K5ATT 57,888-304-64-A-13
WA5SFO 31,311-215-49-A-18
K5JCC 24,675-239-55-A-5
WA5AOI 22,278-159-47-A-6
WA5LVJ 19,030-175-55-B-1
W44YPM/5 18,750-188-50-B-16
WB2LZF/5 9916-74-67-B-13
WA5GZX (WA5s GZX QVE RLZ) 70,174-384-61-A-23

CANADIAN DIVISION

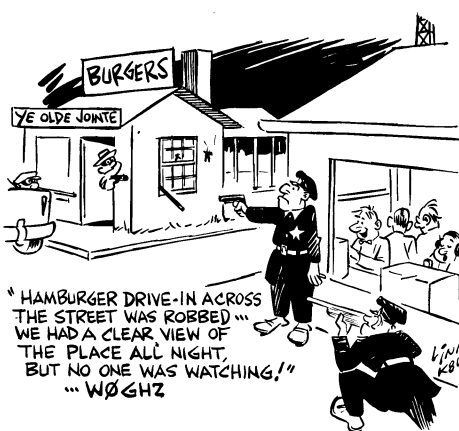
Maritime
VE1APP 4726-46-27-A-9
VE1EKA 1092-27-14-A-7



Here's a talented trio of Californian S5ers. Air Force Capt **K6GJD/6** (upper left) piloted his Swan 400, TA-33 and V-4-6 vertical to a supersonic victory in the A3 mission John soared over the opposition with 700 two-ways 151K, and highest altitude in both Orange and the Southwestern Division. (Yes, W3—, there is an Orange Section.) . . . Contact QSOs from San Joaquin Valley are seldom plentiful, but this year **K6YNB/6** and Fresno's **W6TZN** (bottom left) handed out a total of more than 1050 exchanges during the voice weekend. One of 21 mikesmen to cross off all 75 on the multiplier list, Art became a firm believer in transceive operation as a result of his Sweepstakes doings. . . **WA6IVN** totaled 1456 contacts and 300,000 points for two weekends' work—which, may we say, is making hay in a big way in East Bay. Steve, who pleads for an end to unnecessary repetition of preamble info on c.w., utilized a Gonset GSB-100 transmitter to pump r.f. into a TH6-DX at 78 feet, 40-meter rotary dipole up 65 feet, and an 80-meter wire vertical.



- VE1NV (VE1s AKW NV)
52,650-411-65-B-23
- Quebec*
VE2BMS 75,028-398-62-A-21
VE2WA 558-16-12-A-1
- Ontario*
VE3EVZ 46,045-231-65-A-16
3C3ES 29,382-166-59-A-8
3C3CKW 13,630-145-47-B-10
VE3GLZ 7980-86-35-A-6
VE3DPG 7752-69-38-A-6
VE3DMU 3870-85-29-A-1
VE3E2M 3-1-1-A-1
- Manitoba*
VE4SD 57,992-434-68-B-20
3CA5T 20,706-170-58-B-15
VE4UM (8 oprs.)
39,600-313-66-B-24
- Saskatchewan*
VE5US (VE5DK, opr.)
151,626-686-74-A-24
3C5TU 21,988-132-53-A-21
- Alberta*
VE6AGV 34,580-266-65-B-16
VE6MA 29,621-403-49-A-13
- British Columbia*
VE7EH 63,280-452-70-B-18
VE7BAV 7278-79-27-A-22
- Yukon - Northwest Territories*
3C8BB 19,968-192-52-B-17



- WB2OYE/2
60,559-385-63-A-23
WB2YQH 56,875-350-65-A-20
WA2PCW 36,652-273-54-A-22
WA2BEX 36,225-230-63-B-10
W2ADN 35,126-247-57-A-13
WA2BPH 33,930-261-52-A-21
WB2FWG 32,940-216-61-A-20
W2TFL 31,123-211-59-A-19
WB2SMD 27,859-221-51-A-18
W2SEI 27,230-190-70-B-11
WA2UXZ 21,945-154-57-A-10
K2KKH 21,315-203-42-A-15
K2DDJ 18,696-165-57-B-9
WA2SWW 14,040-160-45-B-14
W2GB 13,500-120-45-A-13
WB2YQ 11,270-98-45-B-18
W2DIZ 7995-82-39-A-8
W2QY 6000-100-24-A-9
WA2AIV 4880-61-32-A-20
WB2VWV 4030-62-26-A-13
WB2YGO 3300-60-22-A-8
W2PDS 3260-50-26-A-3
K2DNN 2596-42-19-B-6
WB2ZCC 2350-52-25-B-20
WN2CAL¹ 2028-26-18-A-24
W2ZCC 1440-32-18-A-4
W2UJS 1375-15-10-A-5
WN2ZOW 1170-26-18-A-14
W2PZH 1046Z
WN2AWX 618-19-13-A-9
WIBUS/2 399-15-11-A-4
K2UAN 230-12-8-A-3
WN2BSG 175-14-5-A-15
WB2ZYW 28-4-4-B-1
W2ACZQ 10-4-1-A-1

C.W. Scores

ATLANTIC DIVISION

- Delaware*
W3GAU 94,980-509-74-A-21
W3IYE 43,120-308-70-B-16
K3COO 37,048-176-62-A-19
W3DRD 37,048-176-62-A-19
W3NNK 19,575-135-58-A-13
WA3GKI 10,335-106-39-A-17
- Eastern Pennsylvania*
W3BES 128,813-687-75-A-24
W3YUW 114,608-623-74-A-23
W3GHM 109,875-510-72-A-21
W3TGH 98,273-533-73-A-21
K3MNJ 85,680-476-72-A-16
W3BGN 83,640-492-68-A-15
WA3DSZ 81,000-450-72-A-18
W3CPS 78,030-477-68-A-24
WA3DCM 77,655-501-62-A-12
K3HTZ 76,525-506-75-B-22
W3KDF 66,869-413-65-A-16
WA3EQ (WA3BJD, opr.)
61,360-416-59-A-17
K3JGJ 58,800-280-70-A-15
W3ISE 58,752-408-72-B-7
W3BP 58,575-330-71-A-17
WA3ATX/3 51,836-301-69-A-23
W3MWC 50,881-350-73-B-12
W3KLT 43,690-257-68-A-17
K3LWR/3 37,800-230-72-A-11
W3EER 27,985-193-58-A-14
WA3CEJ 27,500-251-55-B-15
K3MCO 27,480-229-48-A-11
W3EAN 26,510-241-55-B-10
W3JET 20,100-120-67-A-19
WA3GAT 19,875-111-50-A-19
W3BENY 18,963-207-37-A-15
W3GHS 18,240-114-64-A-7
W3QGB 16,807-172-49-B-11
W3QMZ 16,400-164-50-B-8
W3MPX 14,500-100-54-A-7
K3RFB 13,160-140-47-B-15
W3INH 13,000-100-52-A-4
K3FSV 12,275-110-41-A-7
WA3GLX 10,140-108-39-A-14
W3EQA 9504-104-44-B-5
W3DVC 9405-100-38-A-8
W3BPR 7750-90-30-A-14
WN3HOM/3¹ 6145-74-28-A-19
WA3EMO 6130-77-27-A-8
W3QOR 5475-73-30-A-4
K3EUR 5325-71-30-A-5
W3ADE 4785-82-29-B-6
WA3ABN 4165-60-28-B-19
W3BUR 4125-50-25-A-2
WN3HMU 3760-51-24-A-24
WA3CTW 3476-52-27-A-7
K3HNP 3378-52-26-B-9
K3SXR 3258-49-29-A-9
K3LL 2375-50-19-A-5
WA3GMS 2168-51-17-A-4
WN3IPE 2125-48-20-A-24
K3LBG 2102-29-19-B-3
K3ZOL 1580-31-20-A-2
WN3HYJ 1291-18-A-9
W3STA 1200-30-20-B-3
W3CEI 1080-27-16-A-5
W3CXO 1080-30-18-B-5
K3DPQ/3 650-20-13-A-4
WA3CMD 601-19-13-A-4
WN3IGU 385-16-11-A-19
W3ADNV 315-15-9-A-2
W3PNL 150-10-6-A-1
K3PSW 23-3-3-A-1
K3BNS (K3BNS, WA3JCA)
41,876-360-58-B-21

W3YP (4 oprs.)

- 34,524-274-63-B-24
WN3IMG (WN3s HST IMG)
1876-44-19-A-12

Maryland-D. C.

- K4GSU/3 131,123-720-73-A-24
W3BIS 112,325-611-73-A-24
W3MSR 95,900-651-73-B-24
W3AZD (K3OAE, opr.)
93,592-643-72-B-24

Southern New Jersey

- WB2TEN 92,440-508-72-A-24
W2HDW 90,165-525-68-A-21
WB2MOQ 75,140-442-68-A-21
WA2BL 70,125-425-66-A-1
K2AA (W2PYS, opr.)
61,425-351-70-A-23

W3DVO (W3DVO, W9SZR)

- 89,206-611-73-B-25
W3MVB (W3MVB, WA3AUS)
70,414-509-69-B-24

W3EPT (8 oprs.)

- 117,250-621-75-A-24
W3DVO (W3DVO, W9SZR)
89,206-611-73-B-25
W3MVB (W3MVB, WA3AUS)
70,414-509-69-B-24

Western Pennsylvania

- WA3BLE 104,843-571-73-A-24
K3HKK (K3AHT, opr.)
104,483-583-71-A-23
WA3IXN 103,680-585-71-A-24
K3KMO 76,060-418-72-A-22
W2KAT/3 52,785-306-69-A-19
K3EXE 45,958-300-62-A-24
W3MLM 45,500-280-70-A-15
W3NME 44,740-324-54-A-18
W3KQD 29,225-190-63-A-4
WA3GJU 26,438-225-47-A-13
WA3ENR 23,002-186-62-B-15
K3AFC 19,448-187-52-B-23
K3RZE 10,180-127-32-A-9
WA3GPK 8960-113-32-A-13
K3VXV/3 5873-81-29-A-8
K3UGM 2550-31-20-A-8
WA3GZQ 1200-30-16-A-5
K3RXC 1080-36-12-A-4
WA3CQG/3 935-22-17-A-5
K3CFA 855-14-13-A-7
WA3HMV (4 oprs.)
23,954-204-50-B-24
WA3HAL (WA3E GTE HAL)
5670-108-21-A-19

W3RGR (8 oprs.)

- 90,946-616-73-B-18
W3DPJ 88,375-587-75-B-24
W3ORE 81,738-503-65-A-23
W3AEL 69,458-441-62-A-16
W3IXS 69,010-412-67-A-23
W3MFR/3 67,200-381-66-A-20
W3CSZ 62,808-372-67-A-17
W3AXW 57,816-397-73-B-12
W3TMZ 55,714-415-66-B-21
K3IYZ 49,260-257-72-A-23
W3JYF 41,316-313-66-B-15
W3AFM 37,668-258-73-B-14
W3FY5 37,465-256-59-A-24
WA3GZM 35,075-231-61-A-24
W3MCG 34,720-231-48-A-16
W3EZF 34,433-233-67-B-11
K3NPV 33,390-265-63-B-6
WA3AMH 28,296-211-55-A-22
K3CYA 27,815-173-62-A-2
W3MNE 23,936-187-64-B-24
WA3GMC 20,690-190-44-A-18
WA3GJU 15,625-164-36-A-13
W3KDP 14,250-114-50-A-9
W1QMM/3 12,573-107-47-A-13
W3TN 11,830-114-38-A-14
W3KMF 9640-98-36-A-17
W3AGAU 7588-85-31-A-10
W3ASHN 5092-67-38-B-6
W3QCB 4179-77-25-A-9
WN3IJR 4219-53-25-A-22
WA3HFR 3300-66-20-A-13

W2QDY (8 oprs.)

- 21,800-200-52-B-17
WB2UVB 18,498-151-49-A-13
K2ERC 16,125-150-43-A-15
WB2VHU 16,100-184-35-A-18
WB2SCK 16,048-131-49-A-13
K2BG 13,950-140-50-B-9
W2PU (K3JL, opr.)
22,538-191-59-B-13
21,800-200-52-B-17
18,498-151-49-A-13
16,125-150-43-A-15
16,100-184-35-A-18
16,048-131-49-A-13
13,950-140-50-B-9
10,413-119-35-A-21
7020-108-26-A-15
5135-79-26-A-14
4766-82-29-B-2
4740-79-24-A-6
3705-67-26-A-17
3024-64-28-B-3
1155-33-14-A-4
420-14-12-A-3
K2PI 82,271-465-71-A-23
W2PAZ 420-14-12-A-3
W2PAU (W2s PAF)
82,271-465-71-A-23
WB2ZGR (WB2s YCZ ZGR)
35,563-312-50-A-22
W2REB (K2PWW, W2REB)
28,560-340-42-B-20

Western New York

- 116,523-638-73-A-24
92,889-505-73-A-24
74,621-449-67-A-12

W2TOP (W2TOP, WA2CUZ)

- 24,116-182-53-A-21
WA2BCI (WA2BCI, WB2WI)
8815-86-41-A-7

W2YUW (W2YUW, WA2CUZ)

- 25,200-210-60-B-21
24,116-182-53-A-21

W2ZCC (W2ZCC, WA2CUZ)

- 10-4-1-A-1

W2ZCW (W2ZCW, WA2CUZ)

- 10-4-1-A-1

W2ZCY (W2ZCY, WA2CUZ)

- 10-4-1-A-1

W2ZDZ (W2ZDZ, WA2CUZ)

- 10-4-1-A-1

W2ZEZ (W2ZEZ, WA2CUZ)

- 10-4-1-A-1

W2ZFG (W2ZFG, WA2CUZ)

- 10-4-1-A-1

W2ZGJ (W2ZGJ, WA2CUZ)

- 10-4-1-A-1

W2ZGK (W2ZGK, WA2CUZ)

- 10-4-1-A-1

W2ZGL (W2ZGL, WA2CUZ)

- 10-4-1-A-1

W2ZGM (W2ZGM, WA2CUZ)

- 10-4-1-A-1

W2ZGN (W2ZGN, WA2CUZ)

- 10-4-1-A-1

W2ZGO (W2ZGO, WA2CUZ)

- 10-4-1-A-1

DIVISION LEADERS

Phone		C.W.	
Single Operator	Multipoperator	Single Operator	Multipoperator
W3GRF	W3ZKH	K4GSU/3	WA3EPT
WA9ITB	WA9HEU	W9YT	W9JDJ
W0HSC	K0VYV	WA0HYI	K0VVY
K4PUZ	W4ODR	K4PUZ	WA4UCE
K8DOC	K8WBL	K8UDJ	K8BFT
W2RLM	WB2VYM	W1BGD/2	W2SZ
WA6EMS	WA0CHH	WA6GCR	K0GXR
K1LPL	W1KBN	K1LPL	K1DFC
W7UBN	WA7BKW	K7CTI	W7TRE
WA6IVN	K6LY	WA6IVN	WB6QIT
K4WJT	WA6VW	K4VLD
WA6CVS	WA7HQU/7	WA6CVS
WA4PXP	WA4ECY	K4BAI	WA4UBH/4
K9GJD/6	WB6YXP	WB6RW	WB6NWK
K5RHZ	WA5GZX	K2EIU/5	K5LZO
VE5US	VE1NV	VE5US	VE3EZM



Louisiana is represented on the clean-sweep honor roll by **WA5LGO**, who turned up a Vermont station only an hour before the voice contest ended. Larry radiated with a 20-15-10 beam, 40-10 vertical and 80-40 dipole.

K9DWDG 56,088-321-70-A-19
 WA9NWK 53,257-300-71-A-24
 WA9FBC 57,841-311-67-A-20
 WA9EJ 46,140-297-61-A-15
 WA9OKJ 45,209-260-68-A-10
 W9GFF 38,609-231-67-A-11
 WA9MFM 35,598-289-86-B-16
 W9RCJ 34,618-227-61-A-8
 WA9QBM 28,835-165-67-A-18
 K9DMW 21,730-212-41-A-21
 WA9RJM 15,676-153-51-B-19
 WA9SML 14,960-139-44-A-12
 W9REC 14,170-109-52-A-17
 WA9UOS 12,249-129-41-A-16
 WA9UAG 12,240-149-34-A-18
 W9SZQ 11,993-123-39-A-12
 W9UDK 11,825-112-44-A-7
 WA9QQB 9,435-102-37-A-9
 K9EFC 7,401-98-31-A-11
 W9HFG 7,000-70-46-A-7
 WA9JIS 6,480-73-36-A-4
 WA9AGM 5,760-85-36-B-5
 WA9RFF 5,696-75-31-A-7
 W9QMW 5,001-49-33-A-4
 WA9QMB 3,540-50-24-A-8
 W9WR 3,430-49-35-B-13
 K9TDB/9 3,375-55-25-A-7
 WA9SV 1,805-39-19-A-9
 WA9VPP 1,670-35-18-A-4
 WA9RPD 1,238-28-18-A-4
 W9JUN 1,216-32-19-B-2
 WN9ULI 1,200-37-15-A-9
 W9YAC 1,020-31-12-A-10
 W9VBY 945-27-14-A-2
 WN9UOQ 363-15-10-A-3
 WN9VQF 70-7-4-A-17
 WA9KLU 30-8-3-A-1
 W9JDU (WA9E OES HSS LGT) 58,338-363-65-A-22
 WA9RXX (WA9E KYA RXX) 23,934-294-41-A-24
 W9EUN (4 ops.) 2772-55-28-B-4

W9GMV 7972-83-42-B-5
 WN9TOP 7146-79-33-A-16
 WA9RTP 4520-59-32-A-17
 WA9TPQ 4063-64-26-A-15
 W9WYL 3375-50-27-A-12
 WN9USA 3105-46-27-A-22
 WN9VNJ 2656-40-19-A-14
 W9VZ 2313-37-25-A-4
 WA9NDV 640-32-8-A-3
 WA9RUD 3-1-1-A-1
 W9KMM (4 ops.) 19,392-203-48-B-17

DAKOTA DIVISION

Minnesota
 W0AA (W0TKX, opr.) 92,525-526-70-A-20
 K0ZXE 82,449-463-71-A-24
 W0LKL 76,631-463-67-A-23
 K0LJ 76,415-445-69-A-21
 W0YC (WA0PME, opr.) 74,520-418-72-A-24
 WA0KDS 64,571-392-67-A-20
 W0YLP 63,054-439-71-B-24
 K0CNG 15,975-142-45-A-17
 WA0PRT 13,600-160-34-A-21
 W0LAJ 11,340-108-42-A-8
 W0PAN 8900-100-44-B-7
 WN0RAQ 8505-82-38-A-16
 WN0SEN 4750-52-30-A-20
 K0BPT 405-14-12-A-3
 W0KUL 50-5-5-B-1
 WN0RWH 10-2-2-A-1
 WA0DKA (WA0S DKA PRL) 103,410-578-72-A-24
 WA0CJU (6 ops.) 92,744-527-71-A-24
 WN0RVN (5 ops.) 4909-73-33-A-23

North Dakota
 WA0HYI 112,950-637-72-A-24
 WA0VOW 25,043-189-53-A-9
 WA0ELO 11,855-118-46-B-10
 WA0PK 950-95-40-A-12
 K0RSA/9 4760-68-35-B-6

South Dakota
 W0SMV 87,407-617-71-B-24
 WA0OML 1475-33-20-A-14
 K0ZTV 930-21-12-A-1
 K0VVY (W8GBB, WA0QC) 115,610-637-73-A-24

DELTA DIVISION

Arkansas
 K5TYW 59,538-405-73-B-14
 WA5KUD 49,806-309-65-A-20

Louisiana
 W5WML 100,731-574-71-A-22
 W5BUK 84,135-474-71-A-24
 W5GZE 73,425-445-96-A-21
 W5EKF 63,440-435-64-A-17
 WA5PWX 39,589-329-61-B-14
 W5ERR 33,698-221-59-A-20
 WA5GVB 35,375-270-50-A-15
 W5WG 14,678-153-57-A-18
 WA5JW 13,999-127-43-A-7
 WA5NRL 4858-67-29-A-9
 WA5ADT 3-1-1-A-1

Mississippi
 K5AEU 81,570-577-70-B-22
 K5IIN 78,313-553-71-B-24
 WA5OYU 8360-105-32-A-21

Tennessee
 K4PUZ 125,013-689-73-A-24
 W4SQE 83,880-466-72-A-24

K4UWH 79,100-440-71-A-18
 WA4VYL 51,000-300-68-A-17
 W4DRT 37,193-258-58-A-23
 WA4OCG 36,603-246-17-A-15
 WA4ZUI 5895-67-36-A-16
 WB4DAM 4050-70-30-B-8
 WB4FNN 3900-60-26-A-8
 WN4GSS 650-23-13-A-7
 WA4UCE (4 ops.) 32,450-275-59-B-24

GREAT LAKES DIVISION

Kentucky
 W4CVI 83,603-447-74-A-22
 WB4AIN/4 73,420-510-71-B-23
 WA4TWB 56,430-342-66-A-20
 WA4UAZ 24,920-184-65-B-12
 K4LIA/4 20,625-167-50-A-19
 W4DHE 18,978-163-47-A-13
 W4YDL 10,605-115-34-A-11
 WA4UIH 7313-75-39-A-10
 WB4BEO 5845-57-34-A-5
 WA4SMS 2350-27-20-A-4
 W4NWT 1950-39-25-B-4
 K4YUZ 1164FOT
 W4LDD 960-30-16-B-2
 WA4ZIR 210-12-7-A-1

Michigan
 K8UDJ (K8MFO, opr.) 124,313-663-75-A-24
 W8UM (W8CQJ, opr.) 120,900-806-75-B-24
 W8SH (K1ZND, opr.) 120,138-611-75-A-24

W8DQL 99,330-609-66-A-23
 W8CRD 63,528-402-61-A-24
 W8VPC 89,113-534-70-A-23
 W8P'GW (W8SRD, opr.) 73,765-444-67-A-22
 72,719-455-65-A-23
 W8NDZ 64,040-399-64-A-15
 W8MAM 62,305-366-87-A-24
 W8KME 62,305-366-87-A-24
 W8TQN 53,544-338-65-A-24
 W8HFM (WA8QA, opr.) 52,640-335-64-A-22
 K8HKM 51,120-286-72-A-23
 K8ZHU 49,695-301-66-A-15
 W8SFD (K8SZZ, opr.) 39,528-328-61-B-20
 39,088-266-59-A-20
 W8ELE/8 38,837-275-71-B-20
 W8V'U 27,413-215-51-A-11
 W8OPW 27,003-200-62-A-13
 W8MCCQ 22,756-166-55-A-15
 W8DOI 16,600-166-40-A-12
 W8DM 13,910-107-52-A-9
 W8WSTJ 11,050-85-52-A-8
 W8MSK 11,019-108-41-A-13
 W8GCI 8080-101-32-A-20
 WA8UML 7440-98-31-A-16
 WA8VRB 5425-70-31-A-16
 W8JUP 5425-73-31-A-15
 WN8VJT 5256-73-36-B-14
 K8ETU 5250-90-35-A-5
 W8MFD 4750-75-20-A-5
 W8PDU 3640-53-28-A-7
 K8BGZ 2523-29-21-A-5
 W8SV 595-17-14-A-2
 W8VQ 50-8-4-A-6
 W8W 35-2-2-A-1

W8REN (W8S NKA RVE) 52,345-361-58-A-24
 WN8ZDR (WN8S VMS WZ) 5950-70-34-A-19
 W8RRLW (multiopr.) 4788-57-42-B-10

Ohio
 W8WQX 110,774-603-73-A-24
 W8QDH 101,835-568-73-A-24
 W8ABE 97,360-529-73-A-22
 W8SZC 90,713-429-65-A-24
 W8OYI 92,300-520-71-A-19
 W8SETU 87,688-475-73-A-22
 K8QJH 86,250-502-69-A-24
 K8RMK 85,055-505-67-A-23
 K8NEB 81,353-489-69-A-23
 K8BEK 71,550-432-63-A-19
 W8V'U 62,583-357-60-A-23
 W8LQA 65,880-433-61-A-16
 W8VYU 64,970-418-62-A-18
 4,268-451-57-A-22
 W8SHK 63,280-346-72-A-23
 W8SFA 63,135-414-61-A-24
 K8BLT 62,360-385-64-A-19
 W8AOCG 60,463-357-67-A-17
 W8A'TWC 58,720-367-64-A-24

54,750-300-73-A-14
 51,040-417-60-B-21
 48,914-333-74-B-21
 46,632-350-61-B-15
 44,668-366-18-B-18
 43,200-270-64-A-20
 42,713-255-67-A-16
 42,529-300-71-B-20
 41,063-225-73-A-17
 40,455-308-65-B-15
 40,100-330-68-B-17
 39,570-268-58-A-17
 39,125-250-61-A-20
 36,228-231-61-A-21
 33,500-250-67-B-20
 29,869-206-59-A-13
 28,981-204-55-B-18
 28,587-252-57-B-23
 28,288-185-59-A-16
 25,784-227-57-B-14
 25,750-165-60-A-12
 24,795-171-58-A-15
 24,375-150-65-A-9
 23,861-161-55-A-7
 22,815-169-54-A-12
 21,188-162-50-A-19
 20,140-132-58-A-9
 19,895-174-46-A-19
 19,750-175-43-A-13
 19,360-136-54-A-20
 18,750-100-75-A-14
 17,800-150-56-B-9
 17,415-129-54-A-10
 16,675-145-46-A-13
 16,665-122-52-A-14
 15,574-201-31-A-14
 14,850-111-54-A-12
 14,846-164-43-B-10
 14,345-151-38-A-15
 12,524-134-43-B-13
 12,420-134-43-B-13
 12,255-114-43-A-18
 W8EDU (WA3BGE, opr.) 11,844-141-42-B-5
 11,670-98-44-A-7
 10,690-85-67-B-9
 10,165-117-36-A-11
 9690-95-61-B-8
 9688-125-31-A-8
 9678-79-49-A-7
 8600-80-40-A-14
 7800-104-30-A-10
 7819-117-34-A-14
 6250-50-30-A-12
 6050-61-40-A-17
 5775-77-30-A-3
 5557-74-31-B-9
 5270-62-34-A-9
 5175-69-30-A-4
 3944-64-23-B-5
 3375-56-25-A-16
 3263-46-29-A-4
 3010-43-28-A-13
 2990-52-23-A-15
 2880-43-28-A-15
 2728-45-31-B-3
 2400-40-24-A-4
 1829-45-19-A-14
 1568-34-19-A-3
 1396-33-21-B-5
 1343-22-66-B-22
 1026-27-19-B-6
 700-24-15-A-10
 708-32-12-B-2
 624-20-16-B-2
 574-23-14-B-6
 554-17-13-A-6
 230-2-2-A-1
 WN8YSV 163-17-5-A-10
 WN8YHN 113-8-6-A-3
 WN1HNQ/8 106-12-5-A-8
 WN8VNW 3-1-1-A-1
 K8BFT (K8S BOY DHT NPH) 60,638-383-60-A-24

Wisconsin
 W9YT (K9ZMS, opr.) 139,563-743-75-A-24
 W9RQM 86,285-487-71-A-24
 WN9NJ 61,635-382-68-A-21
 WA9JGO 57,603-321-72-A-19
 W9PJT 55,628-382-73-B-22
 WA9HRS 46,935-301-63-A-6
 WN9WU (WA9EAK, opr.) 31,628-225-57-A-16
 WA9HCZ 29,839-2155-por-64
 W9GOC (WA9LBN, opr.) 28,481-179-64-A-12
 WA9TIA 22,915-174-52-A-21
 WA9NSR 16,238-115-53-A-6
 WA9MCC 13,628-125-51-B-22
 W9TXF 12,60-90-56-A-13
 K9GDF 11,324-150-38-B-4
 WA9SQN 10,000-100-36-A-10

HUDSON DIVISION
Eastern New York
 W1BGD/2 134,317-711-75-A-24
 W2C8Y 49,280-311-64-A-23
 W2MEL 43,633-283-62-A-11
 W2BYM 38,940-265-59-A-21
 W2ALX 37,043-225-66-B-2
 W2PTR 36,815-247-58-A-20
 W2HES 33,225-288-63-B-17
 K2KUA 25,020-210-48-A-13
 W2BND 24,720-210-36-B-15
 W2BRZ 12,510-139-36-A-8
 W2AGS 12,420-139-36-A-8
 W2BYX 8250-100-33-A-15
 W2AEE (WA2BNK, opr.) 7562-101-38-B-8

WB2YBQ 7000- 75-32-A-9
WA2BHN 3410- 44-21-A-4
WN2BND 3185- 51-26-A-10
WN2BRI 1475- 20-10-A-12
W2FL 975- 26-15-A-5
WN2BHK 735- 22-14-A-10
WB2UHZ 494- 19-13-B-1
WN2CRW 45- 6-3-A- -
K2KGE 10- 2-2-A-1
WB2UUD 10- 2-2-A-1
W2SZ (5 oprs.)
70,500-477-75-B-24

New York City-Long Island

W2GGE 98,272-666-74-B-23
W2AJR (WA2UWA, opr.)
K2ZYR 97,738-545-71-A-24
WB2FAJ 73,899-445-71-A-23
WB2VTM 53,760-420-64-A-19
WA2KSD 45,795-323-71-B-17
W2GKZ 39,836-266-73-B-12
WB2SZZ 34,223-256-54-A-20
WB2KLL 27,280-176-62-A-20
W2WJ 27,070-158-66-A-20
WB2SDA 23,830-181-52-A-12
WA2YDA 20,273-159-51-A-16
W2IIG 17,425-206-34-A-19
W2DUS 16,875-150-45-A-8
WB2BCI 12,095-118-41-A-17
W2HAF 11,809-100-45-A-8
WB2UJS 10,000-95-43-A-14
WB2ROV 8625-115-30-A-14
W2UAL 8269-123-27-A-11
K2HGR 8118-100-41-B-7
W2GQL 7000-100-24-A-16
WA2URD 6107-100-31-B-6
WB2YFF 5470-100-24-A-16
W2LPA 5040- 84-24-A-10
WB2WXR 4900- 70-28-B-6
WB2WXP 4089- 71-29-B-6
WN2ARD 4088- 67-30-A-16
K2OH 35- 3-29-B-6
WB2ZSG 44- 4-29-B-6
WB2HIR 3063- 49-25-A-14
WN2AXL 2205- 42-21-A-11
WN2ZWT 1775- 40-20-A-16
WB2ZXR 1275- 35-15-A-11
WB2VIA 1173- 26-15-B-3
W2TUK 1083- 25-7-B-1
W2UNS 825- 30-11-A- -
W2TNI 553- 17-13-A-7
WB2UZU 390- 13-12-A-3
WB2BFP 375- 15-10-A-4
WB2UZC 198- 11-7-A-2
WB2OLD 183- 6-6-A-4
WN2AXH 15- 3-2-A-1
WB2HMS (WB2s HLM HMS)
54,640-373-72-B-23
WB2YCC (WB2s YCC YKU)
35,630-255-56-A-24

Northern New Jersey

WB2RKK 96,030-534-72-A-23
W2NNL 91,263-522-70-A-24
WB2NZU 89,750-500-71-A-23
K2CQR 76,466-493-62-A-23
K2BMI 75,464-417-73-A-22
WB2TFK 72,400-400-72-A-24
WB2SSZ 64,790-430-62-A-15
WA2ASM 61,450-391-62-A-11
WB2YFM 55,913-355-63-A-17
WB2RJI 55,406-365-65-A-17
WB2UEK 37,890-284-56-A-16
WB2YEW 37,500-300-50-A-19
WA0N0R/2
32,463-245-53-A-19
W2DMJ 30,800-193-64-A-9
WB2ZU 27,456-110-50-A-13
W2GBY 24,380-184-53-A-16
WB2ZSH 21,130-245-33-A-17
W2WE 15,813-128-50-A-16
W2ECO 15,210-117-52-A-15
WB2GQU 14,125-150-35-A-22
WB2CGO 13,750-110-50-A-13
W2IBZ 13,080-154-34-A-9
W2NEP 12,250- 70-70-A-11
W2EWZ 10,125-150-27-A-11
W2OPE 8400-160-28-B-6
WB2NSV 6000-100-24-A-17
K2BWB 5400- 90-30-B-7
W2ZEP 5400- 90-24-A-6
WB2OHK 4608- 82-22-B-3
W2VJN 4464- 93-24-B-4
W2ABL 4332- 97-38-B-4
WN2ANI 4185- 82-27-A-19
W2CJY 3300- 55-30-B-7
WN2AXY 2588- 46-23-A-16
W2KHK 2375- 63-19-B-3
WN2AMM 2370- 40-24-A-7
WN2CHJ 1995- 38-21-A- -
W2LRO 1710- 36-19-A-2
K2PL1/2 1705- 31-22-A-3
W2MPP 633- 23-11-A-2
W2JDH 595- 17-14-A-3
WN2BRW 140- 8-7-A-10

QSO LEADERS

(Single-operator)

Phone	C.W.
K4WJT 870	W8UM 806
W2RLM 849	K1LPL 761
K8DOC 841	W9WT 743
K0CVA 834	W6RW 724
K1LPL 819	K4GSU/3 720
WA0SDC 805	W1BGD/2 711
WA4PXP 798	WA9ITB 707
WA6IVN 793	W1MX 699
W5WUMU 789	K2EIU/5 690
K7UKC 786	K4PUZ 689

MIDWEST DIVISION

Iowa
WA0SDC 122,875-652-75-A-23
K0AZJ 83,600-473-70-A-18
K0AKXJ 67,825-447-75-B-24
WA0JSD 27,825-210-53-B-16
W0QVA 18,800-200-47-B-9
WA0QYS 14,331-119-45-A-20
W0YSE 9009- 75-43-A-11
WAJTC 5694- 73-39-B-9
W0TLH 3270- 55-24-A-10
W0QND 2363- 47-21-A-16
W0QZR/ø 1838- 35-21-A-13
WA0RJ 220- 11-8-A-10
K0GXR (K0GXR WLGJ)
85,733-486-71-A-24
W0GHZ (4 oprs.)
3273- 62-22-A-24

Kansas

K0BWI 38,280-240-66-A-16
K0PFW 18,800-161-47-A-18
K0KED 16,880-162-49-A-11
W0YRN 9225- 90-41-B-13
WA0KDJ 6600- 66-35-A-7
W0ECV/ø 6408- 52-52-B-4
WA0LWC (K3ZML, opr.)
3094- 50-25-A-4
W0QQQ (5 oprs.)
28,072-246-58-B-15

Missouri

K0JPL 113,055-628-73-A-23
KSKJN/ø 86,395-467-74-A-24
W0QWS 71,730-403-72-B-23
K0DEQ 55,924-398-69-B-19
WA0EML 46,899-297-63-A-11
W0KCG 38,413-223-70-A-17
K0JPL 27,720-176-63-A-10
WA0PUL 13,210-111-44-A-16
WA0LJV 10,106-116-35-A-17
WN0RVR 5950- 70-34-A-16
K0YGR 2100- 41-21-A-8
WN0QXN 275- 11-10-A-10
WA0PEU 3- 1-1-A-1
W0QEV (5 oprs.)
66,409-391-67-A-24
W0EEE (WA0s CXI IKI OXO)
56,736-394-72-B-23

Nebraska

W0WLO 71,820-402-72-A-21
WA0GVJ 41,950-260-63-A-9
K0OAL 3565- 46-31-A-4
K0ODF 2283- 27-19-A-3
WN0RSK 75- 10-4-A-4

NEW ENGLAND DIVISION

Connecticut
W1EHC 117,180-632-74-A-24
W1CSM 94,670-565-68-A-23
K1UHX 88,048-605-72-B-24
W1AFCB 67,184-494-68-B-18
WA1FJU 64,000-400-63-A-20

Eastern Massachusetts

WIMX (K3QDD, opr.)
98,790-699-70-B-24
98,781-522-75-A-24
76,420-420-72-A-23
K1EUF 58,709-353-67-A-24
W1AFHU 56,595-15-68-B-3
K4LEU/1 55,770-335-64-A-20
K1CUD 52,699-306-69-A-20
W1HRG 30,994-220-57-A-24
W1AQE 27,555-167-66-A- -
K1VUT 23,273-161-58-A-14
W2AZO/1 19,500-156-50-A-20
W1AIEOT 13,116-14-46-A-8
W1EIQ 12,600-116-50-B-18
K1KNI 10,250-100-41-A-12
K1QFC 8568-119-36-B-4
W1PLF 7884-110-36-B-11
W1AFCD 2785- 55-26-B-15
W1DYU 2778- 51-22-A-12
W1HGS 2365- 45-22-A-20
W1WLZ 2100- 50-21-B-2
W1NHRT 2035- 37-22-A-8
W1RSR 1344- 32-21-B-6
W1NISH 90- 7-6-A-13
W1BET 83- 6-6-A-2
W1KBN (K1FVS, WBZs NGI WJF)
57,443-333-69-A-20

Maine

W1GAX 29,915-193-62-A-9
W1GKJ 13,440-140-48-B-7
W1PBN/1 32- 4-4-B-1

New Hampshire

W1DXB 58,823-357-66-A-22
W1EEF 53,520-451-60-B-23
W1BUT 12,052-131-46-B-8
W1AFPCN 8305- 76-44-A-14
K1POV 3063- 50-25-A-8
K1AC 1725- 30-23-A-4

Rhode Island

K1LPL 138,883-761-73-A-24
W1KMW (K1JYN, opr.)
102,240-568-72-A-20
W1ALBC 44,400-279-64-A-18
W1AFNK 42,700-280-61-A-24
W1EIR 31,920-230-56-A-19
K1TAV 9188-105-35-A-12
K1YDA 8670-102-34-A-13
W1AHHB 1800- 40-18-A-9
W1AGND 1240- 31-20-B-9

Vermont

W1AHXU 34,716-289-66-B-18
W9BLQ/1 32,988-207-65-A-14
K1UZZ 17,663-157-45-A-12
W1PEG 13,566-166-42-B-21

Western Massachusetts

W1EOB 101,875-538-75-A-22
K1KDP 60,210-355-72-A-24
W1EIZ 47,232-369-64-B-15
W1WLF 18,590-150-52-A-11
WN2HHA 2500- 40-16-A-14
K1DQC 1838- 35-21-A-3
WN0WKN/1 1823- 24-14-A-7
W1NHHF 304- 16-9-A-4
K1DFC (K1DFC, W1AIFB)
78,192-543-72-B-24
W1AHEC (4 oprs.)
22,998-200-58-B-23

NORTHWESTERN DIVISION

Alaska
KL7JDO 38,354-255-61-A-15
KL7MF 38,052-302-63-B-12

That proud smile belongs to Larry, WA3BLE, c.w. winner for WPa after a furious struggle with K3HKK and WA3IXN —would you believe three 100K-plus scores from that section? BLE did the trick with a DX-60, Drake 2B, TH6-DX, inverted veed, and a dipole. You'll be hearing him from Lehigh University next year.





Missouri's 13-year-old **WNØRVR** breezing along on a TO keyer en route to 5,950 Sweepstakes points. Tom's FB setup also includes a Drake 2NT transmitter, 2C receiver and a 14AVQ vertical.

KL7FRZ 15,520-134-55-B-20	WN7HPK 2073-33-13-A-17
KL7EWA 11,985-115-54-B-15	WA7EYN 1857-39-17-A-16
KL7AIZ (5 oprs.) 50,317-378-67-B-24	W7DRA 1496-29-21-A-5
	WA7GLC 1403-26-22-A-7
	K7RSB 1350-27-20-A-6
	W7EVT 1250-25-20-A-3
W7IUO 50,490-312-66-A-24	W7BUN 3-1-1-A-1
K7CPC 13,536-111-49-A-6	

K7CTI 114,750-614-75-A-20	WA6IVN 121,265-663-74-A-24
K7KOC 51,350-320-65-A-22	K6AUD 46,900-280-67-A-17
W7FLB 25,436-181-57-A-6	K6BXI 45,608-371-64-B-22
WAØATY/7 23,220-203-55-B-21	W6BETV 40,975-248-65-A-24
K7LTV/7 22,545-167-54-A-13	W6BBC 34,650-220-63-A-24
WA7BQS 450-15-12-A-2	K6LRN 203-9-9-A-2

W6FAR 3-1-A-1	W6WFN (WN6s WFN YMB)
K7BFR 94,276-530-71-A-24	W6WFN 1418-35-18-A-9
K7WWR 7080-76-32-A-4	
WA7ETL 2300-58-16-A-24	
WA7DGF 1480-37-20-B-8	KH6LJ 80,240-590-68-B-18
WA7HGD 486-17-13-A-8	
W7TRE (KT7DSs, W7TRE) 58,658-362-66-A-23	

K7UKC 93,656-504-75-A-24	W6NKR 65,213-353-74-A-21
W7ETZ 61,132-453-69-B-19	W6GEX 51,405-298-59-A-20
K7ONF 46,970-312-61-A-15	WA6JDT 19,415-127-58-A-12
K7EXT 45,900-270-68-A-15	W6VUZ 8075-85-38-A-9
W7GYF 38,865-243-62-A-10	
WA7CSK 31,875-170-75-A-15	
WA7FOE 24,125-195-50-A-17	
W7IEU 23,200-148-60-A-19	
WA7CXD 21,250-150-54-A-8	
W7ZOI 19,305-143-54-A-13	
W7ERH 17,500-143-50-A-22	
K7VFF 15,180-132-46-A-14	
K7KYG 5125-50-33-A-11	
K7BFL 2243-44-23-A-3	



It looks as if **K8MFO**, operator of **K8UDJ** during the A1 event, is trying to tell us something about the key to a clean sweep. Don obviously knows whereof he speaks, since he got all 75, plus the Michigan winner's certificate, in a close race with **W8UM** and **W8SH**. All three lads made the sweep: could it be something in that bracing Michigan air?

WB6RSS 14,025-128-44-A-15	WN8YCD (WN8s YCD YCE)
WB6YH 10,238-91-45-A-7	123-7-7-A-8
WB6MCA 6480-81-32-A-19	

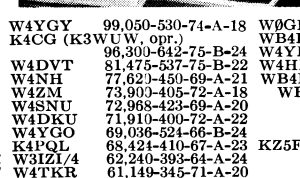
Santa Clara Valley		ROCKY MOUNTAIN DIVISION	
K6EBB 110,960-608-73-A-24	K6QEZ (WA6AMW, opr.)	Colorado	
WA6LFA 96,915-549-71-A-24	WA6TZN 32,815-253-63-B-24	WAØCVS 120,345-680-71-A-24	WØWME 71,663-417-70-A-22
W6GJV 25,296-172-59-A-13	W6GJY 23,375-170-55-A-15	WN8ML/Ø 62,600-390-64-A-24	VE7BHN/VØ
W6AIG 5868-42-31-A-21	WB6AIG 5376-84-32-B-9	KØPED 41,974-270-63-A-21	WØLBP 36,280-224-63-A-23
WB6QIT (4 oprs.) 80,808-546-74-B-24		WØKAU 20,956-202-52-B-6	WØUAT 16,184-146-52-B-6
K6LY (4 oprs.) 64,440-449-72-B-24		WØAT 12,760-95-45-A-9	WØAMB 8,312-51-24-A-11
		WØMBL 1860-31-24-A-11	WØHEP 96-8-6-B-1

ROANOKE DIVISION		North Carolina	
W4NQA 98,875-653-75-B-23	K4MPE 97,108-520-74-A-24	WA4JPFW 64,940-387-68-A-21	K4EOP 59,635-350-67-A-19
W4VON 16,808-155-52-B-18	KH6FON/4 14,606-143-41-B-9	WA4WSU 9975-95-42-A-22	W4BGL 4750-60-25-A-2
W4BGL 4750-60-25-A-2	W4B3N 4000-50-30-B-7	W4EQW 336-14-12-B-2	

South Carolina		Virginia	
K4WJT 118,475-635-74-A-24	WA4VZK 64,255-362-71-A-4	W4CPE 2498-37-27-A-6	K4YTZ (WB4DFW, opr.) 1015-30-14-A-4
W4B3N 124,765-670-74-A-22	W4KFC 108,100-716-75-B-19	W4PTR 106,750-564-75-A-24	K4AEV 102,000-550-75-A-18

Utah		Wyoming	
K7RAJ 117,438-625-75-A-24	W7QDM 110,760-626-71-A-24	K7VWG 20,719-169-51-A-15	WA7BSG 1829-20-17-A-1

WØQZR/Ø had 35 contacts, 21 sections and 13 hours of fun with this mini-power rig. The transmitter consists of a 2N918 oscillator, 2N918 doubler and 2N3866 final; the receiver is a Regency transistor converter working from a pocket radio; the antenna was a dipole taped to the ceiling. Joe's signal may not have been a rock-crusher, but it was at least a stone-grinder (No? How about a pebble-pusher?)



W4YGY 99,050-530-74-A-18	K4CG (K3WUW, opr.) 66,300-670-75-B-24	W4DVT 77,621-457-65-B-22	W4NH 81,475-530-75-B-22
W4ZM 73,900-405-72-A-18	W4SNU 72,968-423-69-A-20	W4DKU 71,910-400-72-A-22	K4PQL 68,424-10-67-A-23
W4TKR 61,149-345-71-A-20	W4YZC 53,150-373-56-A-18	W4GF 49,725-307-65-A-15	W4NHF/4 48,060-267-72-A-19
W4WBC 31,744-248-64-B-12	W4MOJ 30,550-240-65-B-23	K4MXF 27,500-200-53-A-10	W4BDRD 27,280-250-44-A-23
W4WJW 20,315-125-65-A-15	W4YØX (WB4VD, opr.) 20,055-191-42-A-19	W4IA (W4TFX, opr.) 13,035-162-33-A-10	W4PNK 9430-93-41-A-4
W4ASU 8520-94-40-B-5	W4CHW 7262-95-31-A-22	W4AGT/1 7200-91-32-A-18	W4FZG 4590-51-36-A-4
W4JAT 3625-50-29-A-5	K4UYU 3408-47-29-A-4	W4HOU 3048-54-23-A-13	K4VDL (K4VLD, WB2ZFX) 128,438-680-75-A-24

W4YGY 99,050-530-74-A-18	K4CG (K3WUW, opr.) 66,300-670-75-B-24	W4DVT 77,621-457-65-B-22	W4NH 81,475-530-75-B-22
W4ZM 73,900-405-72-A-18	W4SNU 72,968-423-69-A-20	W4DKU 71,910-400-72-A-22	K4PQL 68,424-10-67-A-23
W4TKR 61,149-345-71-A-20	W4YZC 53,150-373-56-A-18	W4GF 49,725-307-65-A-15	W4NHF/4 48,060-267-72-A-19
W4WBC 31,744-248-64-B-12	W4MOJ 30,550-240-65-B-23	K4MXF 27,500-200-53-A-10	W4BDRD 27,280-250-44-A-23
W4WJW 20,315-125-65-A-15	W4YØX (WB4VD, opr.) 20,055-191-42-A-19	W4IA (W4TFX, opr.) 13,035-162-33-A-10	W4PNK 9430-93-41-A-4
W4ASU 8520-94-40-B-5	W4CHW 7262-95-31-A-22	W4AGT/1 7200-91-32-A-18	W4FZG 4590-51-36-A-4
W4JAT 3625-50-29-A-5	K4UYU 3408-47-29-A-4	W4HOU 3048-54-23-A-13	K4VDL (K4VLD, WB2ZFX) 128,438-680-75-A-24

W4YGY 99,050-530-74-A-18	K4CG (K3WUW, opr.) 66,300-670-75-B-24	W4DVT 77,621-457-65-B-22	W4NH 81,475-530-75-B-22
W4ZM 73,900-405-72-A-18	W4SNU 72,968-423-69-A-20	W4DKU 71,910-400-72-A-22	K4PQL 68,424-10-67-A-23
W4TKR 61,149-345-71-A-20	W4YZC 53,150-373-56-A-18	W4GF 49,725-307-65-A-15	W4NHF/4 48,060-267-72-A-19
W4WBC 31,744-248-64-B-12	W4MOJ 30,550-240-65-B-23	K4MXF 27,500-200-53-A-10	W4BDRD 27,280-250-44-A-23
W4WJW 20,315-125-65-A-15	W4YØX (WB4VD, opr.) 20,055-191-42-A-19	W4IA (W4TFX, opr.) 13,035-162-33-A-10	W4PNK 9430-93-41-A-4
W4ASU 8520-94-40-B-5	W4CHW 7262-95-31-A-22	W4AGT/1 7200-91-32-A-18	W4FZG 4590-51-36-A-4
W4JAT 3625-50-29-A-5	K4UYU 3408-47-29-A-4	W4HOU 3048-54-23-A-13	K4VDL (K4VLD, WB2ZFX) 128,438-680-75-A-24



COULDN'T WORK THE CONTEST FULL TIME DUE TO LACK OF SLEEP AS I WAS BRUTALLY FORCED TO ATTEND A WILD PARTY THE NIGHT BEFORE " ... 3C3ON

- | | |
|--|--|
| WAAQPL (WA4VOA, WN4FJG) 2438-53-23-B-11 | WB6HGU 85,470-581-74-B-24 |
| Western Florida | W6EJJ 75,790-416-72-A-24 |
| WB4DHZ 23,595-226-55-B-20 | WB6KPN 70,015-420-67-A-24 |
| WB4GYX 14,365-122-44-A-13 | WB6UHF 58,123-347-67-A-24 |
| WA4EYU (WA2VIV, WB4HKM, WA9JWI) 48,256-416-58-B-24 | W6SBB 54,513-313-70-A-15 |
| West Indies | W6OEO 32,915-247-52-A-14 |
| KV4AM 3312-72-23-B-4 | W6RCV 26,164-211-62-B-17 |
| SOUTHWESTERN DIVISION | W6UME 23,798-171-57-A-19 |
| Arizona | W6L6S (W6DDB, opr.) 23,585-178-53-A-19 |
| W7EKE 118,165-639-73-A-23 | K6BEP 16,740-141-48-A-13 |
| W7FCD 28,215-199-57-A-12 | WB6TMC 7220-77-38-A-7 |
| W7KRW 3878-50-33-A-4 | WB6KYA 6273-57-37-A-5 |
| WA7FCV (WA7S DAZ FCV) 47,250-300-63-A-24 | WN6VX ¹ 5525-65-34-A-7 |
| Los Angeles | WB81QT 5456-59-31-A-7 |
| W6RW (W6DQX, opr.) 135,563-724-75-A-22 | WB6ZEP 4888-58-34-A-7 |
| K6AEH 123,156-661-75-A-24 | K6CDW 4263-55-31-A-6 |
| | WB6VVS 1575-35-18-A-15 |
| | K6YFZ 813-25-13-A-3 |
| | WN6VUS 648-22-14-A-10 |
| | W6AM 380-16-9-A-6 |
| | W6A8R 288-12-12-B-1 |
| | WA6RQQ 270-12-9-A-4 |
| | WN6YWM 203-16-6-A-3 |
| | WB6ROR 138-11-5-A-1 |
| | WN6ZEC 98-7-6-A-3 |
| | WB6TVH 23-3-3-A-1 |
| | WB6YAX 23-3-3-A-1 |

- | | |
|--|--|
| WB6VBM 10-2-2-A-2 | VE1AE 13,065-134-39-A-17 |
| WB6NWK (WB6s NWK OLD) 88,995-525-68-A-23 | VE1AKA 6040-78-32-A-12 |
| WB6RZH (WB6s RZH VFJ) 65,325-402-65-A-24 | VO1GF (4 oprs.) 19,500-196-40-A-24 |
| WA6WZD (WA6s WOY WZD) 53,680-448-61-B-24 | Quebec |
| WB6WMT (WB6s PXA RGO WMT) 22,880-208-55-B-16 | VE2BMS 91,125-515-70-A-24 |
| WN6VOF (4 oprs.) 6545-77-34-A-21 | VE2VA 38,588-222-70-A-13 |
| WN6WCS (WN6s WCS WQA) 2075-44-20-A-24 | VE2ZT 23,525-170-53-B-13 |
| WN6YUQ (WN6s YUP YUQ) 1024-37-13-A-24 | 3C2AWR 3625-74-25-B-4 |
| Orange | Ontario |
| WB6NRK 86,400-480-72-A-20 | 3C3EEW 61,583-357-69-A-21 |
| WB6WEG 74,938-432-70-A-21 | VE3GCE 43,555-282-62-A-18 |
| K6OIZ 58,788-426-69-B-22 | 3C3ON 35,840-225-64-A-16 |
| WB6TYZ 15,100-120-47-A-14 | VE3BC 27,056-241-45-A-14 |
| K6OVJ 13,380-113-48-A-13 | VE3FXZ 22,600-136-64-A-15 |
| K6YNB 5185-61-34-A-5 | VE3BMR 16,425-146-45-A-13 |
| San Diego | VE3DH 14,688-129-47-A-8 |
| W6JVA 60,528-342-71-A-15 | 3C3CKW 11,025-123-45-B-9 |
| K6CAG 14,445-107-54-A-7 | VE3BQL 10,890-122-36-A-13 |
| Santa Barbara | VE3EJ 24,650-171-58-A-11 |
| W6GEB 75,004-407-73-A-23 | VE3CW 3900-58-20-A-8 |
| W6BHZ (WA7CWM, opr.) 36,450-261-60-A-- | VE3DPG 1458-35-17-A-4 |
| | VE3BLK 1093-23-19-A-9 |
| | VE3ABN 200-10-8-A-2 |
| | VE3E2M (VE3s EVE EVZ EZM) 56,610-338-68-A-24 |
| | Manitoba |
| | VE4EO 16,445-158-44-A-16 |
| | VE4YZ 646-19-17-B-1 |
| | VE4AR 12-3-2-B-2 |
| | VE4UM (VE4s EI JI LG) 42,903-352-63-B-20 |
| | Saskatchewan |
| | VE5US (VE5UF, opr.) 115,300-641-72-A-24 |
| | Alberta |
| | VE6ATH 36,359-225-63-A-15 |
| | VE6VY 35,004-258-09-B-15 |
| | VE6FN 23,798-171-57-A-12 |
| | VE6MA 17,684-151-47-A-12 |
| | VE6AUH 3031-55-25-A-15 |
| | British Columbia |
| | VE7EH 78,225-449-70-A-20 |
| | VE7AM 68,000-400-A-24 |
| | VE7AC 22,948-188-59-B-12 |
| | VE7BVA 22,560-155-58-A-22 |
| | VE7AGN 1760-32-22-A-9 |
| | VE7RZ 1105-34-17-B-2 |
| | Yukon-Northwest Territories |
| | 3C8BB 57,915-353-66-A-23 |

- | | |
|---|-----------------------------|
| WEST GULF DIVISION | Northern Texas |
| K5RHZ 109,865-602-73-A-21 | WA5CBE 85-008-460-74-A-20 |
| WA5DWT 73,695-439-68-A-13 | W5DWT 60,235-359-66-A-23 |
| W5QGZ 45,850-345-52-A-17 | WA5FQI 41,600-261-16-16 |
| W5ONL 40,194-319-63-B-22 | W5ARI 2473-43-23-A-16 |
| W5NHI 1710-36-19-A-5 | W5NHS 450-20-10-A-12 |
| W5QEZ (WA5s PFG QEZ) 37,490-304-60-B-23 | Oklahoma |
| K5OCX 120,970-675-72-A-24 | K2EIU/5 130,281-690-75-A-24 |
| Southern Texas | W5JAW 112,580-613-74-A-24 |
| W5WQN 23,068-158-73-B-24 | K5IAE/5 21,195-159-54-A-21 |
| W5RIT 3675-56-23-A-10 | W5AR 2750-58-25-B-13 |
| W5AL 125,550-848-75-B-21 | CANADIAN DIVISION |
| | Maritime |
| | VE1APP 27,198-237-46-A-13 |

Strays



A contest without **W9YT** would be like a BPL listing without **W3CUL**. Operators **K9KGA** (left) and **K9ZMS** (right) wound up at the top of the Wisconsin heap on both phone and c.w., respectively, with the A1 entry also high score among Central-Division competitors. The boys enjoyed the luxury of a photoelectric CQ-wheel and a voice tape-loop.

QST congratulates . . .

W. Walter Watts, W4VI, on his promotion to senior executive vice-president of **RCA**.

Paul Kinas, WN9VKF, on his appointment to the Merchant Marine Academy.

Frank A. Gunther, W2ALS, named President of the Armstrong Memorial Research Foundation.

Cho Yo-Sung, HM1AA, on receiving his doctorate in engineering from Yale University.

Mary Stockstill, WB6SSZ, the first deaf-blind Novice, on receiving her Conditional Class license.

Wayne E. Overbeck, K6YNB, appointed editor-in-chief of the Daily Record-Gazette (Banning, Calif.).

Stuart D. Cowan, W1RST, on publication of his book (co-authored with Dr. W. R. Guild) *Vigor for Men Over 30*.

Arthur K. Meen, VE3RX, ARRL Associate Counsel, on his election to the Ontario Provincial Parliament.

Dr. Harold Rosen, W5JKW, named "Edison of space" for his design of the Early Bird satellite.

Kenneth M. Gleszer, W1KAY, presented Connecticut's special achievement award for service to the handicapped by Governor Dempsey.