

1947 '48 '49 '50 '51 '52 '53 '54 '55 '56 '57 '58 '59 '60 '61 '62 '63 '64 '65 '66 '67 '68

COMPILED BY ELLEN WHITE\*, W1YYM

**M**AKING this Fall issue of *QST*, with approximately a third more entries than in 1966, calls for some adroit footwork on the part of your reporter and a patient understanding on the part of you, the reader. The magical combination of generally superb conditions, the removal of the W/VE c.w. quota, returning KH6/KL7 to DX status and changing of the DX multiplier from W/VE call areas to the 48 conterminous United States and VO plus VE1-VE8 (sort of a Heinz-57 variety!) led to what we can now record as the biggest reported turnout in the classic ARRL International DX Competition. A total of 2427 logs from con-

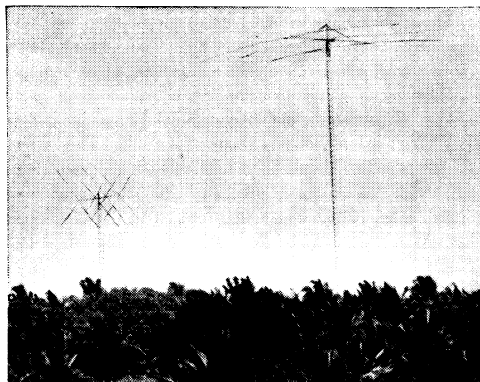
\*Deputy Communications Mgr, ARRL.

testants in 135 different countries reported their activity for the first and third weekends of Feb./Mar. and in no uncertain terms voted their approval of the rules modification.

"The change to states as multipliers makes the contest more interesting." — **G2QT**. "The new rules are the best of all. Let them be the final ones." — **OZ3KE**. "Let's keep KH6 and KL7 on the DX roll." — **KH6BZF**. "The two weekends is still a sound idea and the new system of multipliers by states is more interesting." — **HPIJC**. "I like the new scoring system." — **KA7AB**. "Thanks for changing from call areas to the states/provinces. It makes it more interesting and gives better satisfaction when you come up with something new more often." — **SM0BDS**. "Removal of the quota produced a substantial rise in the QSO-rate through all four days. From the scoring point of view the scarcity of VE signals was a disappointment. I'm in favor of the rules changes." — **G2RO**. "New multipliers made it much more interesting and the rare states were present this year." — **PY2SO**. "I appreciate the new rules and think it has made a tremendous improvement on the interest to the outsiders." — **VK2EO**.

"I was surprised that the drop in the c.w. quota system stirred up a lot more activity in Europe." — **W1BPW**. "Please accept my vote in favor of the no-quota rule for c.w." — **K2GUN**. "I like the no-quota idea; keep it like that." — **W6CNA**. "Quota removal a welcomed change; never a dull moment now." — **W6CUF**. "The removal of quotas plus using states as multipliers is the best move you've made yet. Now the contest is really interesting." — **W7PGX**. "Glad to see the quotas gone, I think that they hurt the little guns rather than the big ones." — **K9DWG**. "New contest rules seem to have stimulated more phone DX activity." — **W1YRC**.

After analyzing some 2400-plus entries in a contest you become aware of areas needing improvement. The log-keeping this year seemed painful for the participants. Whatever system you use should be kept either in duplicate *at the time* or be painlessly reproduced later. There shouldn't be a need to recopy the logs. The check sheets provided, for the W/VE crew, are meant to be used during the contest to both avoid duplicate contacts and help you keep track of those multipliers you still need. They're not designed to be used to eliminate duplicate contacts



The top DX single-operator score on both modes by **H18-XAL** will set a mark for all future DXers. This antenna shot, taken with a telescopic lens from about 2000 feet away (at the shoreline of the Caribbean), shows Fred's 75-foot tower on the left holding a 4-element 10-15-20 meter quad. On the right, the 130-foot tower holds a 3-element 40-meter beam. Between the two towers runs the 80-meter half-wave doublet at a mean height of 70 feet. In addition, the taller tower supports various wire antennas.

after the contest. Many of the DXers in the test commented on the large numbers of duplicate contacts which reduced their hoped-for score. If our system isn't working for you, use your own, but in fairness to all participants find and use a system that will prevent duplicate contacts. More marked this year were the comments on those calling CQ DX. They went all the way from writing a ban into the rules to other extremes! One WØ put it nicely by saying "If the so-called experts at DX contest hadn't raised such a racket calling CQ DX the rest of the gang would have heard something."

There are a few additional thoughts that occur as we wind up this report and they include a plea for more frequent signing by the DX station, a reminder that all awards are scheduled for mid-October mailing, a reminder too that the first and third weekends in Feb. and March of 1968 are on the schedule for the next one and, perhaps most of all, a personal note of congratulations to all participants who came, worked and reported.

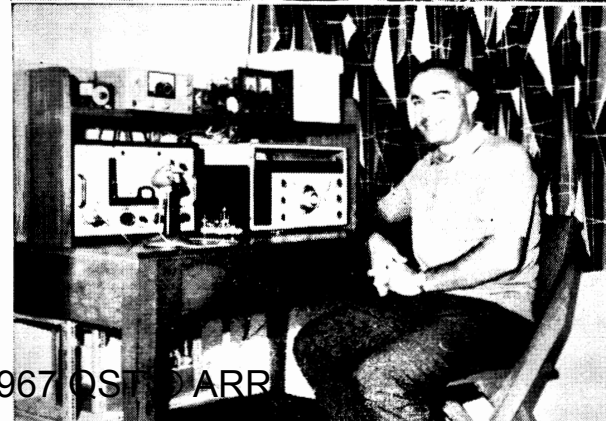
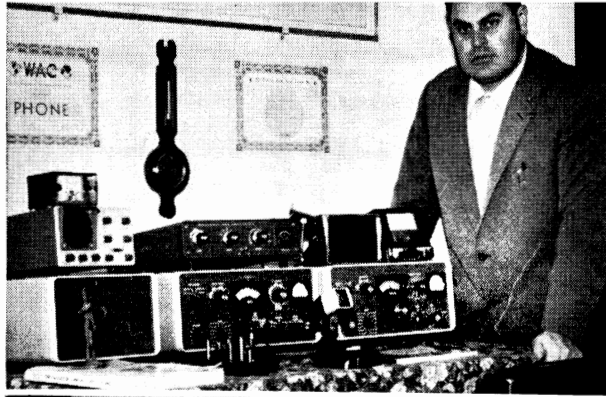
In order to have room for some 600 additional listings, the usual tabulated comparisons, etc. the full "Soapbox" will have to appear in an abbreviated fashion. Taking the editorial prerogative, let's just say that this cross-section of W/VE comment appeals to us!

### Soapbox

"I'm fifteen years old and my voice hasn't changed yet. This proved helpful in the pileups." — **WB2UVD**. "The first time I've stayed up past midnight, I'm 15" — **WB2YNX**. "My first DX test, I'll be back next year to give W2FXA some competition." — **WN2YQH**. "Finished my WAS during the DX test, I'm looking forward to finishing off my DXCC during the SS." — **WA3BGE**. "Remember the DX Tests when we exchanged messages for a week?" — **W3LMZ**. "Suggest you retire the winners that repeat year after year, with proper honors recognizing them as masters. This would give the rest of us a chance." — **W4GKD**. "This would be a wonderful contest if you could get the east-coast stations to QRT." — **K5JVF**. "Yahoo, L-path is open!" — **W6QQW**. "It seems as though my beam works best 180 degrees out of phase, you might say I plunge at DX backwards." — **WA6JDT**. "It would be interesting to review a series of pictures of the contestants at about 2330Z on the last day of each session." — **W6WX**. "There should be a 5000 point bonus for each W/K who could honestly claim that he did not call CQ DX during the period." — **W7RGL**. "If all DXers had KH6LJ's operating skill, I could have doubled my score with the old junk heap I call my station." — **W8AJW**. "There must have been several thousand WB2s on. Half were calling CQ DX and the other half were holding the key down." — **W8ZCQ**. "Say, that PussY cat-2SO sure gets around, doesn't she?" — **KØYBC**. "How about an honorary membership in the American Dental Association for all contest participants. Working in those pile-ups is just like pulling teeth!" — **WA6QFC (K5PKA, opr.)**.

"Most of the operators were real gentlemen. That is, until a real rare one came along." — **WIDTY**. "Why does U5ARTEK rate a homebrew call?" — **WB2OIV**. (Located at a pioneer youth camp in the Ukraine, Ed.). "Do the stations using the services of local v.h.f. spotting nets qualify as single operator?" — **W2QWS**. (No, Ed.)

From top to bottom, a collection of exotics to quicken the pulse of any DXer: **I51VAZ** with better than a half-million phone points; **FG7XF** with a nice c.w. showing with 462 exchanges; **EP2BQ** giving it a go on both phone and c.w. for well over 1300 combined two-ways; **CR7CI** trying hard in both sessions to provide a Mozambique multiplier.



October 1967

From October 1967 QST ARR

## AFFILIATED CLUB SCORES

	Aggregate	Entries	C.W. Winner	Phone Winner
Potomac Valley Radio Club	34,376,243	53	W4KFC	W3KMY
Frankford Radio Club	33,320,718	77	W3BES	W3BES
Northern California DX Club	14,367,020	47	W6WX	K6OHJ1
Southern California DX Club	12,538,661	59	W6ITA	W6ITA
128 Contest Club (Mass.)	9,043,877	13	K1DIR	K1DIR
Honolulu Amateur Radio Club	7,840,304	6	KH6JJ	KH6JJ
Niagara Frontier DX Assn. (N. Y.)	6,655,504	22	K2LWR	K2GXI
Order of Boiled Owls of New York	6,577,479	18	WB2CKS	W2SUC
Connecticut Wireless Assn.	4,309,573	14	W1BIH	W1BIH
North Alabama DX Club	3,206,568	24	W4GRG	WA4WAO
Golden Triangle DX Club (Fla.)	2,819,649	3		W8LXJ1
Miami Valley Amateur Radio Contest Society (Ohio)	1,972,663	14	W8ZJM	W8ZJM
Suffolk County Radio Club (N. Y.)	1,713,373	13	W2GKZ	WB2FON
South Jersey Radio Assn.	1,445,232	22	W2GGT	W3UNJ/2
Central Michigan Amateur Radio Club	1,301,991	7	W8RXY	W8RXY
Louisville's Active Radio Operators (Ky.)	1,197,069	6	W4CVI	W4BCV
Order of Boiled Owls of Ohio	1,130,970	8	W8ZCQ	K8EHU
West Park Radiops (Ohio)	820,734	15	W8AJW	K8WUG
Indian Hills Amateur Radio Club (Ohio)	611,406	11	W8QXQ	K8AXY
Ohio Valley Amateur Radio Assn.	541,488	6		W8AJI
Forestville Amateur Radio Assn. (Conn.)	505,290	6		W1CKA
Tri-Town Radio Amateur Club (Ill.)	332,810	6	K9YOE	
Friendship Amateur Radio Club (Pa.)	145,215	3		W3KDD
Delta Radio Club (Tenn.)	34,737	5		W4OGG
West Allis Radio Amateur Club (Wis.)	27,384	5	WA9IAT	

1 W6BHY, opr.

"Conditions fabulous, but little time. Gave up the first weekend so my Jr. op. WN2YQH could participate in the Novice Roundup." — W2FXA. "California stations were giving the east coast heavy competition this year." — W3LNE. "Wish I could understand this blasted s.s.b." — W3GHS. "Bet Bayer made a fortune in this contest." — WA3DCG. "Losing your linear the beginning of the second day is like losing your right arm." — W3NM. "Neither frozen rotators, nor snow static, nor a midnight visit from the FCC (they came, they saw, they were satisfied), failed to diminish our fun. That is, except W3MSK." — K2GL. "It's no place to go barefoot." — W4KFC. "Heard a G-station say during the contest, to the strong carrier on frequency, if you don't mind, I'll inject the carrier in my receiver from this end." — W5OER. "The pileups were like a turkey ranch at feeding time." — WB6IMN. "Wait till next year, I have K2GL/W3MSK-West under construction." — W7ESK. "Enjoyed the world-wide chuckles my call produced." — K9BUG. "During the second half our cat ran off with my only earphone cord and plug and I had to operate the rest of the contest with a small speaker cannibalized from the children's portable phonograph. As soon as the test was over, and I was reassembling the record player, in walked the cat dragging the missing cord and plug." — W6IJM.

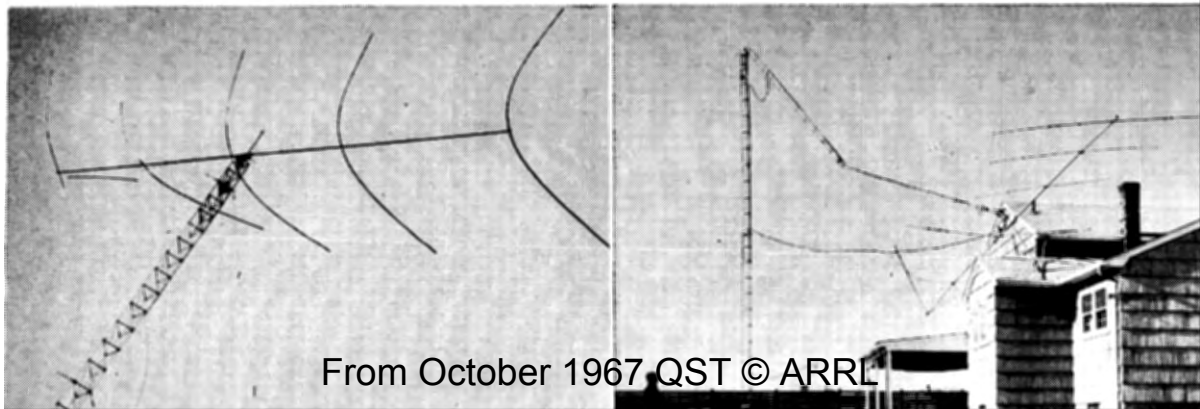
### The Clubs

The brand-new contest format turned in some brand-new looking club tallies, easily doubling the 1966 sums. It was turnabout time too for the Potomac Valley Radio Club, registering 34,376,243 points and winning another engraved gavel. The Frankford Radio Club was tough competition with 33.3 million points and a lot of strength in the phone portion of the test. Position-

wise, the Northern California DX Club tacked down the third spot with 14.3 million and some real rivalry by the big signals from the Southern Southern California DX Club. A major voice in this year's test was the 128 Contest Club of Eastern Massachusetts and 9-million-plus points with just 13 entries. A brand new entry in this club group is the newly affiliated 100% ARRL club, the North Alabama DX Club. Spearheaded by WA4WAO, the group represents some of the biggest and best signals in the south. In addition, the club submitted the best-looking club letter. The highest total points per member goes to the Golden Triangle DX Club. Fine increases too were registered by the Miami Valley Amateur Radio Contest Society, the Suffolk County Radio Club and others. For the first time, we'll present a comparison of the top ten clubs by mode, a popular feature introduced in the November Sweepstakes reporting:

C.W.	Position	PHONE
Potomac Valley RC	1	Frankford RC
Frankford RC	2	Potomac Valley RC
No. Calif. DX Club	3	Honolulu ARC
So. Calif. DX Club	4	No. Calif. DX Club
128 Contest Club	5	Niagara Frontier
Order of Boiled Owls	6	So. Calif. DX Club
Conn. Wireless Assn.	7	128 Contest Club
Honolulu ARC	8	No. Alabama DX Club
Niagara Frontier	9	Conn. Wireless Assn.
No. Alabama DX Club	10	Order of Boiled Owls

Short and very sad stories. On the left an action scene at K6YNB during an 80 m.p.h. wind storm just prior to the start of the first phone weekend. An adequate explanation of why he operated the entire test with a 15 meter four and a half element yagi! W2AGM is on the right with a very clear explanation of why he operated just the first phone weekend.



HC1TH did a fantastic job amid hot phone competition in South America with a 2nd high continental total of 2.7 meg. Tom really attributes the fine results to his "chief operator" Rita since she kept the kids quiet, she fed him, she told people he wasn't home, she let him yell throughout the night without a bad word and she treated him like a human being.



### Continental Comments

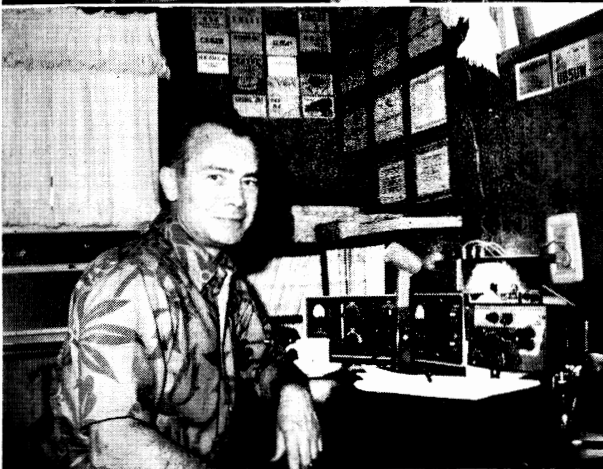
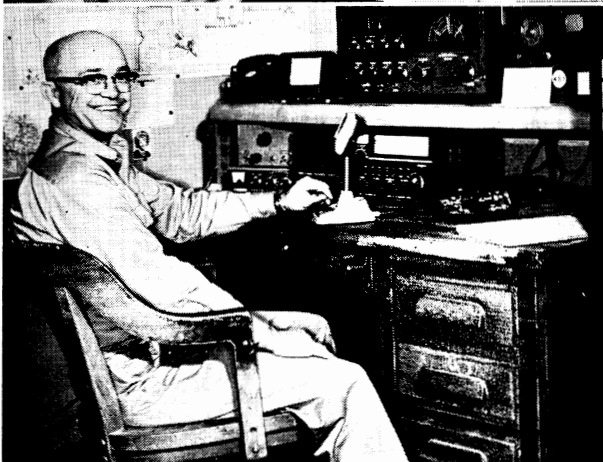
"Next year I'll be there both weekends with a quad and vee." — 5H3KJ. "It seems strange that people one hasn't seen in years have to pick the contest weekend to visit." — ZS5RS. "A nice contest but I regret that so many stations gave me duplicate QSOs." — CR6GO. "An unscheduled business trip to the states kept me from competing in the second half of the c.w. test." — ZD8J. "Quite a lot different from VP5 but still a lot of fun. You need a beam for 40 out here." — VQ9AR.

"Only free from duty for one day and decided to give some licks on forty with all of my 25 watts." — 9V1OB. "The Wstrong on 40. I enjoyed 4-band QSOs with W3TMZ

W4GRF W3MCG W4BVV W3WJD and K1DIR." — VU2MSK/W3MSK. "The W/VEs operated in an orderly fashion." — MP4BFK. "Good fun and the sun spot im-

Minimum Number of Countries					Minimum Number of Countries					Minimum Number of Countries					Minimum Number of Countries							
Band	75	40	20	15 10	Band	75	40	20	15 10	Band	75	40	20	15 10	Band	75	40	20	15 10			
W1AXA	23	33			W3HA				84	WA5ALB	17		81	62 77	WA8RXU				65			
W1BFA				77	W3HHA*				68	K5AKQ				63	W8RXY				68 66			
W1BIH		30		72 74	W3HHK			63	88	W5EHY*				82	W8SKV				60			
W1CBW				62	W3IYE*			60	71	K5JZY			82	64 81	W8TWA/8	15			72 65			
W1CKA				71 70	W3KDD				89	W5KC			60	65	W8WT				77			
K1DIR	34	45	103	89 81	W3KRV	25			68	69	W5KGJ			80	K8YBU			141	61			
W1DIT	18				W3LOE	15	35	105	89	86	W5KTR	16	35	73	95	WA9CYV			62			
W1FJJ	21				W3MDE/2				99	W5LZZ			64		W9EWC	22			86 66			
WA1DJG				60	W3MSK*	58	77	157	135 118	K5MDX			87	58	W9GIL				81 77			
W1HQV				63	K3MTK/3*				70	60	W5NMZ			65	62	W9GMV			66			
W1JYH	17	34	101	84	64	W3MVB			61	W5OGS			102	65	69	WA9HJM			61			
K1OBT				61	K3NHL	28	43	107	73	86	W6CCP*			78	79	W9IRH			79 75			
K1OKG				66	61	W3NKM			91	K6ERV			61		78	WA9IVL			74 62			
W1RF				60	77	K3NMY			105	W6IBD			78		78	W9JQD			88			
K1SHN				86	K3PSW				70	W6ISQ			86		78	W9LKI			71 67			
W1UOP				74	72	K3TPL	18	49		82	W6ITA	17	37	106	87	83	W9MLJ/1			66		
W1YQF				70	60	W3U...*			61	W6JTA			3	96	61	K9PPX			70			
WA2BEX				93	W3V...*	54			107	W6L...*			7	3	96	61	W9RQM			65		
WB2CON				63	73	W3Y...*			75	W6M...*			3	96	61	W9TYT			71			
W2EGG				61	W4A...*	40			100	W6N...*			5	71	69	K9TZH			65 64			
WB2FON	19			81	80	W4B...*			87	W6O...*			5	71	69	W9VZP			65			
W2FXA				69	69	W4B...*	42	72	132 118	99	W6YMN			62		W9WTD			82			
W2FZJ	26	39	95	52	W4BYB			52		68	W7ESK			32	83	64	60	K9ZJV			65	
K2GL*	66	81	151	140	110	K4EZ			97	76	K7PXI			71		70	W9BAA			64 72		
K2GX1	30	60	103	81	87	W4FVY			65		WA8AJ1			78		70	K9BHT*			87 73 61		
K2LWR	15	115	68	69	69	WA4GCS	16	30	88	88	80	K8AXG			81	68	70	WA9CPX			77	
WB2MDH*				81	67	68	W4IHK	49			61	W8BF			103		60	W9CUC	20	31	89	123
WB2NXL				92	WA4IKU				61		61	K8BGZ			60		60	W9LBB			67	
WB2OIV				60	K4KJD				67		67	W8BVF			111		60	K9EIA			61	
W2PDB				81	84	K4KZZ	22	31	88		88	K8DOC	52	42	80	98	86	W9IEM			68	
W2QWS				95	89	90	W4MBV			66	68	W8ECA			73	69		W9IVZ*			62 73	
W2SSC				92	W4NBV	19			83	78	60	W8EEZ			41			W9IYH			117	
W2SUC				69	71	W4OGG			66	66	K8EHU				62			W9LBB			75	
K2TQC				60	W4QBK	19			115	83	W8GGE			63				W9LTE*	16	31	82	83 68
K2USA*				32	75	75	W4QCW	31	46	122	107	99	W8GKA			72		VE1PL	28	35	101	86 63
W2WZ				90	W4AQVQ*				60	68	W8AGUF*			76	76			VE2WA			97	
W3BES	22			90	91	87	W4RQE	53				W8HBR			82			3C3FHO*			95	64
W3BGN*	15	33	103	88	96	K4RZK			71		71	K8HZU			60			VE3UX			81	
W3BQN				62	60	K4VYN			99		99	WA8LEO			60	83		3C6SF			85	
W3BYX				66	65	WA4VZK			69		69	W8LXU			103	66	68					
W3DHM				69	64	WA4WAO			92	93	90	WA8LYF			102							
W3FYS				65	68	K4WSE			61		61	WA8MCR			70	68						
W3GRS				66	W4ZYS*	16			102	73	80	WA8RGT			77	82						

\* Multi-operator Station



provement meant the bands were open to a certain extent during the nights." — EP3AM. "Next year may be back from Liechtenstein." — HB9Z.

"One operator is continuously needed to tranquilize the TV-watchers." — OH2AC. "Great to be back after 8 years." — OZ7BG. "Impressed in my first big contest by the discipline, courtesy and skill of most American operators, which contributed to my pleasure." — SM0BUO. "Still going strong with QRP. My outputs are now 4, 6 and 10 watts on 28, 21 and 14 Mc." — OH3YI. "Near the end of the contest everytime I worked a W9 in ILL I had a great urge to send HPE SN BTR, but I managed to refrain." — G3JYP. "VE7 and VE8 before and after but not a single one during the test." — HA1KSA. "Nicest experience was receiving a QSL from K7UCT in Utah saying he couldn't understand how I could pick his 50-watt signal out from the layers of QRM. Guess it was because I needed the multiplier!" — PA0XPQ. "Please try to organize better weather for next year. It is difficult climbing a pole in a gale to straighten a quad." — G3GRS. "Lightening and thunder helped keep our operators awake during early hours and on occasion provided shack illumination." — GW3ITZ. "Outstanding this year was the marked decay of conditions on 160 and 80 and the great improvement on 10." — VK5KO. "Started the phone contest with K1DIR and ended the c.w. contest with K1DIR." — W0PAN/KH6. "A lot of fun working the gang from PY7SOL. A highlight was working Ed, VU2MSK, through the W/K pileup." — PY7SOL (W3PZW, opr.). "Thanks to all who stood in the pile up to give me their points." — CE2CR.

"If ten improves further, a vapor-cooled ballpoint pen will be needed. Water cooling just won't do it!" — OZ7DX. "U-stations can only operated s.s.b. on 80 between 3600 and 3650 kc. but only a few W/VE stations know this." — UA3KBO. "Would appreciate it if the boys back in the states would not take over the frequency from us QRP DX stations after getting their report. I had to move constantly on account of this." — DL5KS. "You certainly had your crystal ball correctly loaded this year, a pair of weekends with excellent conditions on all bands." — G3UML. "First place in our 'duplicate contest' was a certain W7 with 6 QSOs on 20 meters." — OH2AM. "Disappointed after reaching the million mark to see the figure drop below that as duplicates were deleted." — ZK1AR. "Most outstanding phone signal was K2GL on all bands except forty where W7SFA was tops." — ZLIAGO. "Rounded up my WAS." — 8R1G. "Fair play was the prevalent climate in the W/VE phone boys . . . congratulations!" — CX2CN. "At one point during the contest I had a cigar lit, an 807 in one hand and a pencil in the other and during a QSO I fell asleep for five minutes." — HC1TH. "The rapidity of s.s.b. in passing exchanges is finally producing higher phone than c.w. scores. I had peak hours of 160 QSOs on sideband, an impossibility on c.w." — HI8XAL. "What good are checklists if not used? I found 135 stations worked more than once and one guy worked me four times." — VP7NH. "Terrific phone QRM, all bands. Contest operation is hindered by the fact that here, in Afghanistan we have to work on Saturday and Sunday." — YA5RG. "My last effort from Japan. My next effort will be with a W1 group trying to top W3MSK." — KA7AB.

### Disqualifications

The calls listed in this paragraph are all deemed ineligible for score listings or awards. In each case, disqualification was under contest rule 14 in view of non-observance

From top to bottom, DX test performers *par excellence*: **K8YBU** leading West Virginia with close to 590-K phone points and with big antenna plans for 1968; **W7NPU** active in both modes and supplying a welcome Utah multiplier, **W6PQW** specializing in a 15-meter performance while utilizing his own antenna design (5 elements, three driven, two parasitic) amid terrific competition from the East Bay area, **W9ERU/7** a familiar call from the unfamiliar section of Arizona with a half-million plus c.w. points and a brand-new call to watch for in future contests, **W7EKE**.

of FCC rules as reported by at least two accredited Official Observers, or by a single FCC citation or advisory notice. Such violations as out of band operation (sidebands or carrier), spurious emissions, etc. were the basis for these disqualifications. C.w.- KIDPB, W1EVT, WA1FHU, WB2RHW (WB2s PAR RHW, opr.), W3HHA (W3HHA, K3YQL, opr.), W4JD (WA4HHW, W4JD, opr.), W4JDR, K4CL, WA4VZK, W5WZQ, K5BXG, W5ODJ, W6ITY, WB6LIV, W9FTK/8, W8AZD, K8UZX, K9LOK,

W9QQG, K9HDP, W0VXO (WA0BWM, opr.), K0FLJ. Phone — W2JSX, W2FSK, K3JYZ (K3JYZ, W3DVA, opr.), W3AXW, W3ARU, W3OK (K3s MAZ QDU, WA3s ATK CXM FGS, W3IZI, opr.), K4MSK, W4ETO (K4s GRD IIF RLO, W4s ETO JDR, WA4s LUG PXP WIP, W0LNE, opr.), K4QVK, WB4AMT, K5IIN, W6KJS, K3LY (W1DIT, W5TEH, K5LKI, K6MUX, WA6WJX, W7YAQ, W8HVN, WA0PHM, VE3DRV, opr.), W8BQH (W8s BQH HDB, opr.), WA0EMS.

Minimum Number of Countries					Minimum Number of Countries					Minimum Number of Countries					Minimum Number of Countries				
Band	30	50	80	60 60	Band	30	50	80	60 60	Band	30	50	80	60 60	Band	30	50	80	60 60
W1BHI	37	53	93	79 74	W3AFM			140		W4PTR	32		80	63	WA8CIA				85
W1BPW	45	66	95	80 64	W3AYD			88		W4ATWB				63	W8DUS				81 76
K1CDN			104	74	W3BES	32	56	99	84 72	W4WYJ	33				W8ELE				80
W1CNU				101	W3DFL			76		W4YGY			92	71	WA8FDL				72
K1DIR	53	69	103	84 73	W3DRD				62	K4YYL	32	62	98		WA8GLY*				79
W1ECH		66	87	67	W3EKN	38	61	82	67 64	K4ZA/4*	48	67	84	81 71	W8GQU				88 63
W1EOB	31	57		64	W3EOP	41	56			W4ZSH			88		W8HSK	60			
K1EUF			82	74 67	W3EYF			60	73	W4ZYQ*			92		W8MKE				64
W1FJJ	33			60	W3GHD*	32	53	67		W4ZXI*	34	63	109	76 65	WA8RGT				65
W1FTX				61	W3GRF	35	63	95	73 70	K5ABV				76 71	W8RWU				92 61
W1GOG				61	W3GRS			81	61	W5AC*				60	W8RXY				65
W1GYE				90	WA3GTX				66	W5ABFB*			84	68	K8SBZ				62
W1JYH	37	67	101	85 69	W3HHK				68 68	W5BRR		50	90	70 63	WA8TNO				61
W1UUK				85	K3HTZ				85 69	W5CKY	31	58			WA8TPL				80 69
W1WPO			117		W3ISE				60	W5DQV				67	W8UM*	52	82	123	109 84
K1YKT	46			61	W3IWS				62	K5IIN				67	W8ZCQ				98 77
K1ZND	31			67 66	W3IYE*	40	51	82	69	WA5JMK				69	K9CSW				77
W2AYJ		53		61	K3JH			56		K5JVF			55		K9CUY				60
WA2BEX				93	K3JYZ				62	W5KC				83	K9DWK				61
WA2BLV*	63	83	70		W3KDF				80 70	W5KGJ				63	W9ERU/7				85 66
K2CC*				77	W3LOE	34	66	106	86 79	W5OBS			101		W9EWC	36	68	102	78 65
K2CHQ/1	35				K3MBF*			86		K5STL				85	W9GIL				64 68
WB2CKS	42	65	90	75 67	W3MCG	5		86		W5VW				70	W9GIM*				67
WB2CON				83 66	W3MFW	47	92	107	67	W5W				97	W9HUZ				66
WB2CRX				64	W3MSK*	43	16	88 70		W5X				70	W9IHN				62
K2DCA	38	54	89	76 72	W3MSR			84 83		K5Y				98	W9IOP	71	96	86	63
W2FXA				71	W3MVB			5		W6CCP*				85 60	W9IRH				80 63
W2GGE	30	61	95	75 68	K3NHL	37	57	93	62	W6CUF				101 77	W9JQR				117
W2GGT				61	K3NMY			105		W6CWD			53	89 70	W9KDR				62
W2GKT				68	W3NOH				61	W6CYV				94	W9LKI				64
K2GUN	37	51	91	69	W3PZW				82	W6EPQ				93	W9MQZ				67
W2HO				81	W3TMZ/3*	51	76	97	93 81	W6ERS				84 60	W9RQM				68
W2IRV				64	W3VKD*	30		86	83 78	W6ES				94 73	W9S9Z				81
K2KFA				69	W3WJD*	57	87	136	100 83	W6GQK*				80 64	W9VZP				63 70
K2LWR				116 66	W3YUW*	53	80	118	95 86	W6HOC				81 64	K9YOE				84
K2KTK	36				W4BRB	36			67 66	W6ISA				100 84	W9YT*				69
W2LXK	37	66		65 63	W4BVB*	55	92	131	107 86	W6ITA			53	85 71	W9YYG*				51
W2MEL	42	65	85	72 67	W4BYB			81		W6KEV				68	W9ZTD				86
WA2OJD				68	W4CKD	30	53	93	84 67	W6LDD				80 62	W9CQC				61
W2PCJ	36	64	101	81 68	W4CQI				70	WB6LED				61	WA0CVS				60
WB2PGM				62	W4DKU				85 64	W6MUB				102	WA0EMS				67
K2QIL				61	W4DVT	46			64	W6NJJ				82 61	W0FDL				64
W2RDD				83	W4DXI	30			68 62	W6NKR				77 90	W0IDW				80
W2SEI	34	68			W4FVY				75	W6PQW				101	W0OAW				64 63
W2SSC				94	W4GRG				91 76 70	W6RGG*				94 66	K0ORK				63
W2SUC				85 62	K4GSS				74	W6RW*	47	82	119	93 70	W0TDR				68
WA2UJM				78	K4GSU/3			81		W6SRF				81	3C2BV				82
WA2UWA				70	WA4IKU				65 68	W6TZD				86 62	3C2NV	38			62
W2VJN	50	83	106	91 82	W4KET				63	W6UJ				61	VE2WA				94
W2WZ				82	W4KFC	41	68	103	86 70	W6UMI*				90 76	VE3ES				96
WA2ZEZ				90	W4KXV*	37	61	84	76 62	WA6URY				93	3C5US*				61 63
W2ZKQ				82 70 62	W4LCP				51 98 82 71	W6WX				104 84					
W3ADZ				86	W4NBV				98 68	W7SFA*				59 86 69					

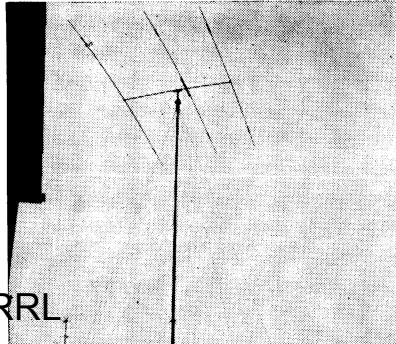
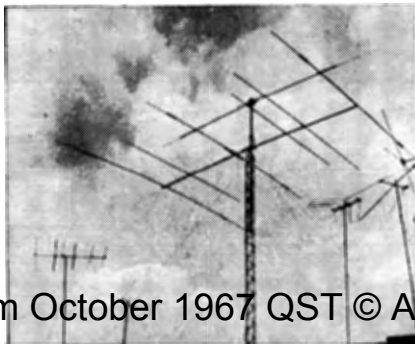
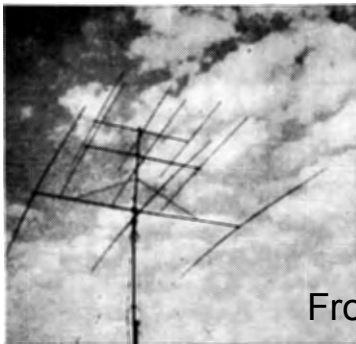
\* Multi-operator Station.

Over 300 QSOs/band — DX

	49	40	20	15	10		80	40	20	15	10
CR6AI			679	402		OK1AHZ				348	
CR6CK		325	408	424	555	OK1PD			479	497	
CR6GO			839	886	628	OK1ZL			729	688	
VQ9AR			898	388		ON4NM				388	
ZD8J		434	583	701	366	ON4XG			401	432	
ZS5RS			726		653	OZ1LO			362	471	
5H3KJ			330			OZ5DX			304	488	362
6O6BW			428	343		OZ7BG			439	313	
9L1TL			567	392	325	OZ7G					385
EP2BQ			377			PA0LOU			559		
EP3AM			521	311		PA0SNG			702		
JA1CWZ			438	585		PA0XPQ			490	430	362
JA1EUV				684		SM4CMG			479	522	
JA1MIN				457		SM5BNX			326		
JA1NEC				355		SM0CCE			435		
JA2HO			435	351		SP3AJ				332	
JA2JAA				348		SP8AG				400	
JA3LGG				386		SP9AKY			330		
JA5AB				341		TF2WIN			340	460	
JA6AKW				538		U5ARTEK*			416		
JA6TQ				569		UA3KB0*			491		
OD5EJ			323			UB5KED*				330	
TA2AC			420			UB5WJ			339		
UW9OU			846			UF6LA			473		
UA9PP			523			UQ0KCR*			510		
UA9KC0*				330		Y0SCR					306
UA9KFG*			481	790		YU1BCD*			469	327	319
UA9KZB			371	510		YU5LB*		454	1457	1127	
VU2KV			408			ZU1ITU*		313	957	1102	335
DJ7IK*			700	877	328	FG7XX				341	311
DL1JW			433	661		H18XAL	475	840	722	962	746
DL6WD			455	478	375	HK0AI		300	1095	1198	987
DL7AA			480	479	359	HP1BR				310	323
DL8KJ			502	476		KL7AIZ*				450	466
DL8K0*			642	598		KL7FRY				354	366
DL0FR*			513	509		KL7IR				376	443
DM4WPL			426	468		KL7MF				352	
EI9J			440	383		KP4CRT		456	688	1039	905
F5SF			373			KV4AM		372	634	473	737
F8TM				346		LV5JF	341	572	669	615	
F8VJ			318		37	E2AAG		403	307	480	402
G2DC			305	458		E2OK		334		353	
G2MI			354			IN3KM				448	
G2QT			330	503		Y5BS					351
G2RO				431	514	KH6FON			332	371	
G3GRS*			635	528		KH6FSP		383			431
G3IAR				303	367	KH6LJ		529	954	1127	890
G3JYP				369	383	KH6UL		324	581	945	709
G3LPC*			349	638		VK2EO		349	851	721	403
G3SSO		485	871	784	480	VK2GW			510		
G4CP			643	564	586	VK3AXK		342	587	375	
G5AGA					327	VK5TC			392		
G130QR		409	829	933	482	VR2DK			478		305
G13SXC*			661	867	491	VR4CR			417		
GM3SVK				313		ZL1AMQ			562		
GW3JI			377			ZL1HW			417		525
HA1KSA			645			ZL3QH			738		
HA4KYB*			577	392		HK3BAE			989	1004	863
HA5KDQ*			303	375		HK3RQ		357	1043	1127	601
HB9RX				354		LUIDAY*			492	764	804
HB9Z*			436			OA4PF			417	675	686
I1HCJ					338	PY1BYK/7				302	
I1KE			612	565		PY1CQ			331		
I1NT			1173	872	452	PY1NO					344
LA1H			385			PY2BGL			1288	871	1050
LA5SH				370		PY2SO			1354	850	910
OE3PWW				347		PY7AKQ		369	827		
OE5KE			398	536		YV1DP/5			370	521	
OH1AD					364	YV1OB			376	422	
OH2AC*			354	443	353	YV4NS			418		
OH2AM*		427	1430	1129	443						
OH2BCZ			375	329							

\* Multi-operator Station.

From left to right; radiators at **KP4CRT** (2.5 meg c.w.), **YV1DP/5** (1470 c.w. exchanges in just 36 hours), **PA0XPQ** (a fabulous performance both modes, 1.2 meg phone and almost 800-K.c.w.).



# Thirty-Third ARRL

## International DX Competition

Operator of the station first listed in each section and country is winner for that area. . . . The multiplier used by each station in determining score is given with the score — in the case of continental U.S.—Canada this is the total of the countries worked on each frequency-band used; in the case of non-W/K/VE/VO entries it is the total of the continental U.S. states and Canadian districts worked on each band. . . . The total number of contacts is listed next. . . . The letters A, B, and C approximate the d.c. input to the final stage at each station; A indicates power up to and including 150 watts; B indicates over 150 watts, up to and including 500 watts; C indicates over 500 watts. . . . The total operating time to the nearest hour is given for each station and is the last figure following the score. . . . Examples of listings: K3NHL . . . 944,622-306-1032-C-71, or final score 944,622 multiplier 306, 1032 contacts; power over 500 watts; total operating time 71 hours. . . . Stations manned by more than one operator are grouped in order of score following single-operator listings in each section or country tabulation; calls or numbers of participants at multi-operator stations are listed in parentheses. . . . In sections or countries where three or more multiple-operator entries appear, the top-scoring station is being awarded a certificate. An asterisk denotes a Hq. staff member, not eligible for an award.

### C. W. SCORES

#### ATLANTIC DIVISION

##### Delaware

K3NHL 944,622-306-1032-C-71  
 W3DRD 266,910-205-434-C-  
 K3NMY 90,132-148-203-C-  
 WA3CRU 2,093-23-33-B-9  
 W3IYE (W3 IYE TGF)  
 922,500-300-1025-BC-87

##### Eastern Pennsylvania

W3BES 1,472,499-343-1431-C-80  
 W3MPW

1,296,552-356-1214-AC-83  
 W3HHK 813,900-266-1020-C-54  
 K3HTZ 721,189-276-873-BC-54  
 W3KDF 566,820-235-804-C-66  
 K3JH 538,650-210-855-C-52  
 WB2MZJ/3

305,982-191-534-B-73  
 W3ISE 265,056-176-502-B-43  
 K3EVR 213,486-161-442-A-60  
 W3KVT 210,807-177-397-C-7  
 W3EYV 195,195-169-385-C-42  
 K3AIG 175,104-152-384-A-4  
 W3NOH 172,914-161-358-C-18  
 W3EQA 168,329-173-326-C-20  
 W3GRS 157,206-197-266-C-15  
 W3KFP 148,404-149-332-C-24  
 WA3ATX/3

136,353-151-301-B-45  
 W3EOP 128,703-150-286-C-29  
 W3INH 122,958-138-297-C-15  
 W3QOR 122,760-120-341-A-28  
 W3GHM 113,652-132-287-C-20  
 K3JGJ 113,184-131-288-C-70  
 W3FNP 89,787-173-173-C-24  
 W3AEQ (WA8BJD, opr.)

77,592-122-212-C-20  
 W3CAA 68,328-104-219-C-16  
 W3ADZ 67,500-103-225-C-25  
 W3BYX 66,822-86-259-C-32  
 WA3BGN 62,988-116-181-A-42  
 W3CBF 57,783-107-180-B-20  
 W3QLW 46,803-83-195-B-35  
 K3RLV 34,713-87-133-B-32  
 K3PTK 32,994-78-141-A-21  
 W3QME 27,000-72-125-C-19  
 W3JBT 24,750-66-125-A-40  
 W3DBX 24,150-70-115-B-6  
 K3RFB 16,986-57-100-B-26  
 W3DNI 13,865-47-99-C-16  
 WA3DQR 11,934-51-78-A-36  
 WA3CUI 10,212-37-93-C-16  
 K3HNP 6,201-39-53-C-16  
 W3GHD 1,596-19-28-B-  
 W3IFS 96-4-8-A-4  
 W3YUW (5 oprs.)  
 3,370,896-432-2601-C-  
 W3GHS (W3GHS, W3YOV)  
 701,892-268-873-C-86  
 W3OK (4 oprs.)  
 388,960-170-763-C-93

#### W3RRV (W3s ECR RRV)

291,000-200-485-C-70  
 K3MBF (4 oprs.)  
 215,424-176-410-C-31  
 K3BNS (K3s BNS JFY)  
 145,200-121-402-C-45

##### Maryland-D.C.

W3GRF 1,417,248-336-1406-C-70  
 W3EKW 856,994-313-918-AC-68  
 W3MSR 776,397-257-1007-C-78  
 W3MCG 597,565-271-735-AC-60  
 W3PZW 404,580-220-613-C-30  
 W3HQU 390,744-201-648-B-65  
 W3MVB 384,330-230-557-C-41  
 W3EYF 362,341-250-467-AC-53  
 W3QQZ 352,070-190-621-B-58  
 W2NQQ/3 317,952-225-471-C-66  
 W3DPJ 260,004-188-461-A-3  
 WA3GT 256,836-204-420-A-53  
 W3AFM 240,100-140-573-C-64  
 W3AYD 236,500-217-364-C-53  
 K3JYZ 201,249-177-379-C-32  
 W3MPJ 133,840-140-322-C-22  
 W3AXW 125,452-158-266-C-29  
 W3HYM 124,845-145-287-C-33  
 W3BQN 119,472-131-304-C-65  
 K6AGU/3 68,040-81-280-B-24  
 W3JXS 61,880-91-228-A-41  
 W3AYS 56,052-108-173-C-3  
 W3KA 44,226-81-182-C-20  
 W3IMZ 35,972-93-131-A-35  
 W3FBE (W4TFP, opr.)  
 30,024-72-139-B-15  
 W3RNY 28,968-71-136-C-14  
 WA3HAN 28,116-71-132-B-18  
 W3CSZ 22,110-67-110-B-11  
 W3DFL 22,726-76-76-C-6  
 W3IWS 13,362-62-72-C-36  
 W3AEL 11,628-51-76-C-5  
 W3AZD 7,215-37-65-C-10  
 W3DPR 5,292-42-42-B-6  
 WA3DSD 3,066-24-43-A-3  
 W3ONQ 492-12-14-A-12  
 W3TMZ/3 (7 oprs.)  
 2,531,394-102-2099-AC-48  
 W3MSK (9 oprs.)  
 2,492,037-409-2031-AC-48

##### Southern New Jersey

K2DCA 1,106,820-330-1118-AC-80  
 K2QLL 505,784-223-756-B-70  
 W2GGL 318,120-220-482-AC-67  
 W2GQY 291,375-185-525-C-60  
 W2SDP 280,368-177-528-C-58  
 W2HDW 233,016-152-511-A-30  
 W2QDY 228,435-157-485-B-50  
 W2FYS/2 190,230-170-373-A-45  
 K2AA/2 (W4HSEF, opr.)  
 164,160-180-304-A-33  
 K2AGU 61,713-111-195-C-20  
 WB2TEN 60,600-101-200-C-13  
 K2BG 21,105-67-105-B-11

### TOP TEN W/VE High Scorers

#### Under 150 Watts Only

##### C.W. Phone

K1ZND . . . . . 731,557  
 W4BRB . . . . . 707,183  
 3C2NV . . . . . 605,472  
 WB2CON . . . . . 494,988  
 WB2PGM . . . . . 424,110  
 K5ABV . . . . . 361,383  
 K4GSS . . . . . 309,843  
 W4WYJ . . . . . 288,360  
 W3DPJ . . . . . 260,004  
 WA3GTX . . . . . 256,836  
 W8ECA . . . . . 320,544  
 K1THQ . . . . . 306,600  
 K9DVZ . . . . . 271,544  
 WB6LCS . . . . . 237,600  
 WA1DJG . . . . . 235,343  
 W5HVV/7 . . . . . 220,158  
 WB2CON . . . . . 189,618  
 WA9HJM . . . . . 164,472  
 W1DYE/1 . . . . . 159,996  
 K3TGM . . . . . 152,295

K2OEA 19,467-63-103-A-12  
 WA2IZS 14,742-54-91-C-  
 K2IEO 11,076-52-71-A-14  
 W2NSJ 9,945-51-65-A-  
 W2EBW 8,892-38-78-B-16  
 K2SQM 8,610-41-70-B-17  
 W2HAZ 468-12-13-A-2  
 WB2GTE 405-0-15-C-3  
 K2VU 48-4-A-  
 WA2BLV (WA2BLV, WB2MOQ)  
 558,750-250-745-C-

##### Western New York

K2LWR 876,876-286-1022-C-76  
 WA2UJM 600,807-271-739-B-83  
 WB2CON 494,988-247-668-A-78  
 WB2PGM 424,110-211-670-A-66  
 WA2BEX 344,100-185-620-B-66  
 W2LJX 282,240-192-490-B-80  
 K2KTK 220,272-208-353-C-30  
 W2SSC 204,051-161-497-C-33  
 W2BJH 219,618-189-388-C-58  
 WA2GHW 190,881-167-381-C-73  
 W2UVE 168,744-178-316-C-36  
 K2INP 160,512-176-304-C-63  
 W2FXA 141,825-155-305-C-14  
 W2SEI 103,161-137-251-BC-39  
 WB2HZH 93,062-158-198-C-45  
 W2PGU 68,532-89-256-A-31  
 W2CUI 40,890-94-155-B-17  
 W2FTU 23,424-61-129-A-45  
 W2QQ (W2PZL, opr.)  
 13,500-43-100-C-  
 W2VXA 11,520-48-80-B-34  
 W2LCO 10,692-44-81-A-17  
 WA2OIL 3,648-32-38-A-6  
 W2DGV 3,240-30-36-B-6  
 K2KNV 1,425-10-25-C-3  
 W2KYH 819-13-21-A-3  
 K2CC (4 oprs.)  
 218,943-159-459-BC-62

##### Western Pennsylvania

W3LOE 1,151,213-371-1035-C-78  
 WA3EIN 86,766-124-233-C-53  
 WA3BGE 18,166-62-98-A-14  
 WA3AWR 4,284-34-44-A-11  
 WA3DTI 4,224-33-43-A-  
 K3PZU 2,475-25-33-A-8  
 W3KQD 482-10-16-A-2  
 W3VKD (4 oprs.)  
 1,521,450-322-1575-C-

### CENTRAL DIVISION

##### Illinois

W9IRH 655,659-263-831-C-69  
 W9HUZ 450,241-268-560-C-69  
 W9KKG 208,334-161-440-C-52  
 K9YOE 206,400-160-430-A-55  
 W9JGJ 135,054-164-312-C-34  
 W9UX 148,680-145-328-BC-  
 W9WIO 119,952-136-294-C-18  
 W9BUD 113,014-121-313-C-33  
 K9UFO 113,004-146-258-C-37  
 K9CSW 79,704-108-246-C-29  
 W9EFS 67,965-115-197-AC-31  
 K9DVG 58,500-99-197-B-23  
 45,540-92-165-A-48  
 K9UIY 38,376-78-164-C-23  
 30,284-67-155-B-25  
 WA9PFB 21,336-56-127-BC-10  
 20,460-62-110-AC-42  
 14,352-52-92-A-19  
 10,080-48-70-A-19  
 8,280-40-69-A-14  
 7,257-41-60-B-11  
 W9EYB 5,292-36-49-A-26  
 WA9QBM 4,212-27-52-A-13  
 WA9NWK 3,276-28-39-A-5  
 WA9REN 1,980-22-30-A-7  
 WA9PPY 1,020-17-20-A-14  
 WA9RAT 885-14-20-A-6  
 W9MKL 867-17-17-AC-7  
 WA9QXT 147-7-7-A-5  
 WA9SVR 108-6-6-B-4  
 WA9RFL 48-4-A-1  
 W9GIM (W9s ERC EVX GIM)  
 390,949-221-595-C-92  
 W9YYG (K9ATZ, W9YYG)  
 370,071-231-547-C-55

##### Indiana

W9IOP 1,512,618-339-1489-C-90  
 W9LKI 291,276-174-558-C-35  
 K9CUI 241,362-198-425-C-71  
 K9DWK 205,350-185-370-C-41  
 W9JQD 87,043-117-248-C-25  
 W9ZTD 61,416-86-237-C-37  
 62,042-87-161-A-20  
 W9AUM 62,042-86-237-C-37  
 K9IHG 38,475-95-135-C-25  
 K9VQK 20,493-93-99-A-37  
 W9UTQ 3,600-30-40-B-20  
 W9DGA 495-11-15-A-2

##### Wisconsin

W9EWC (W9LJK, opr.)  
 1,358,016-352-1298-AC-94  
 W9GIL 560,712-24-766-C-  
 W9VZP 507,840-230-736-C-71  
 W9RQM 506,268-248-688-C-58  
 W9IHN 361,638-222-543-C-70  
 W9SCZ 62,694-81-258-C-49  
 W9QW 29,475-75-131-C-11  
 WA9LAT 14,151-53-89-B-15  
 W9RH 3,432-28-44-C-8  
 WA9RQK 2,829-23-41-A-4  
 W9BOTH 2,808-24-39-A-4  
 WA9NSR 1,994-24-27-A-4  
 W9AEM 1,650-22-25-A-4  
 K9YDY 1,248-16-27-A-4  
 W9APT 798-14-19-B-7  
 K9DZG 351-0-13-AB-4  
 W9YT (K9s LBQ PZMS)  
 382,392-226-564-C-44

### DAKOTA DIVISION

##### Minnesota

K9ORK 338,688-196-576-B-48  
 W9YCR 337,168-183-437-BC-69  
 W9AII 223,110-185-402-C-18  
 WA9KDI 64,020-110-194-C-40  
 WA9KDS 55,242-99-186-A-38  
 K9XZE 35,910-90-133-C-41  
 W9VWP 20,130-61-110-C-17  
 WA9EPG 15,015-55-91-A-19  
 12,240-51-80-B-22  
 W9BHA 9,234-38-81-B-20  
 WA9MKF 3,198-26-41-C-7  
 WA9KIP 1,320-20-22-A-2  
 W9KUI 390-10-13-B-8

##### North Dakota

WA9QFG (K5PKA, opr.)  
 117,528-156-380-B-59  
 K9EIA 34,935-85-137-B-25  
 WA9QVW 9,936-46-72-A-34  
 W9CAQ 882-14-21-C-5

##### South Dakota

W9BLZ 139,896-134-348-C-24  
 W9CUC 24,780-50-140-C-  
 W9CJI 9,360-40-78-B-12



WA0CPX 5,184-36-48 C-15

**DELTA DIVISION**

*Arkansas*

K5TYW 80,724-124-217- C-20  
WA5OWZ 21,240-60-118- A-18

*Louisiana*

W5KC 427,314-229-622- C-60  
W5BUK 271,488-202-448- C-57  
W5BJG 14,400-60-80- B-35  
W5MOQ 13,338-57-78- C-16  
WA5JWU 8,241-41-67- B-11  
W5JFB 540-12-15- A-

*Mississippi*

K5IIN 443,538-246-601- C-66  
W5CKY 308,256-247-61- C-38  
W5MUG 119,472-152-262- -  
W5WZ 25,185-73-115- A-30  
WA5HEC 10,500-50-70- A-30

*Tennessee*

W4NBV 595,602-261-763- C-70  
W4RKY 150,630-149-337- C-60  
W4EWR 3,132-29-37- B-  
W40GG 288-8-12- B-3

**GREAT LAKES DIVISION**

*Kentucky*

WA4TWB 73,500-100-245- C-37  
W4CVI 66,120-145-152- A-39  
W4MPV 35,298-74-159- C-10  
K4GOU/4 13,356-53-84- B-  
K4DZM 5,880-40-49- B-11  
WA4ZIR 1,518-22-33- A-3

*Michigan*

W8DUS 577,710-262-735- C-85  
W8RXY 453,435-215-703- C-80  
W8RGRT 233,037-189-411- C-40  
W8VPC 201,402-167-402- C-45  
W8EW 143,445-131-365-AC-48  
K8HZU 140,094-129-362-BC-31  
W8SCU 79,500-106-250- C-34  
W8WVV 49,350-94-175- A-57  
K8CGD 35,697-73-163- B-34  
W8DGP 29,028-59-164- A-20  
W8EEZ 15,456-46-111- C-19  
W8SS 11,232-48-78- C-14  
WA8CZ 5,766-31-62- B-  
W8TWJ 4,590-34-45- C-8  
WA80PW 4,092-31-44- C-18  
W8EYP 1,425-19-25- A-7  
K8HKM 972-18-18- A-18  
WA80SL 900-15-20- A-6  
WA8MCC 588-14-14- A-4

W8UM (8 oprs.) 3,007,800-450-2228-BC-96

WA8GLY (WA8s GLY HPJ) 504,804-236-713- C-91  
W8REN (WA8s MAM QAF RVE) 27,729-70-117- B-48

K8ZXM 42,660-79-180- A-33  
W8UEX 42,042-98-143- C-16  
W8GOC 35,313-79-149- A-  
W8LZU 34,125-91-135- C-14  
K8SBZ 32,550-62-175- B-42  
WA8TYF 31,098-71-146- A-24

W2GGE 1,118,271-329-1139- C-70  
W2LXK 906,300-300-1077-BC-72  
WA2UWA 588,336-238-824- B-60  
W2IRV 502,994-248-676- B-57  
W2SUC 423,384-236-598- C-47  
W2AYJ 389,856-248-524- C-35  
W2GKZ 283,095-233-405- C-30  
W2WV 263,520-180-488- C-27  
W2YCW 262,086-209-418- C-35  
W2ZKQ 244,602-214-381- C-70  
W2BFON 213,954-169-422-AC-32  
W2RDD 178,011-171-347- C-31  
W2AZS 174,348-167-348- C-43  
W2ZV 90,750-133-250- A-51  
W2BPCF 52,020-85-204- B-26  
W2HAE 37,638-82-154- B-21  
W2CKR 33,102-54-205- B-36  
W2TVT 29,250-65-150- B-54  
DJ1ZN/W2 26,151-69-127- B-30  
W2NCG 25,480-70-122- A-30  
W2BJOX 23,856-71-112- C-62  
W2FQG 22,875-61-125- A-24  
W2BRNL 22,374-66-113- A-21  
WA2FNY 11,139-47-79- C-10  
WA2YJN 7,068-38-62-AB-13  
W2JB 6,018-34-59- A-12  
K2UVV 5,106-37-46- B-3  
W2AFM 4,500-30-50- B-21  
K2QOU 2,464-28-30- B-4  
W2BHQ 2,028-26-26- A-4  
W2RPZ 1,254-19-22- B-7  
W2NHH 1,122-17-22- A-12  
K2HGR 396-11-12- B-1  
WA2LQO (7 oprs.) 232,686-186-417- C-60



That little message reflects the feelings of the W8UM crew after two months of preparation in cold snowy weather that saw the main tower fall two days before the first weekend. Last year they thought it couldn't be done but (left to right) here's the successful task force, W2FIT W8FAW W8VSK W8CQN and K2SIL.

*Ohio*  
W8ZJM 544,492-283-644- C-61  
W8GQU 381,231-231-551-BC-76  
W8ZCQ 373,824-236-528- C-50  
WA8RWU 358,248-236-506-AC-67  
WA8FDL 292,608-192-508- B-56  
WA8TPL 283,662-206-459- B-67  
W8CLD 187,995-151-415- C-70  
W8AJW 152,496-144-353- A-49  
W8ELE 147,201-139-353-AC-65  
W8GMK 129,987-143-303- B-37  
K8EHW 123,255-165-249-AC-29  
W8FDC 110,550-134-275- C-59  
WA8CIA 100,464-104-322- B-66  
W8NPF 91,134-122-249- C-43  
WA8KPO 89,250-125-238- C-28  
W8YGR 83,952-132-212- B-18  
W80BK 79,596-134-198- C-  
WA8MCR 73,485-115-213- C-21  
W8QXQ 68,310-115-198- A-32

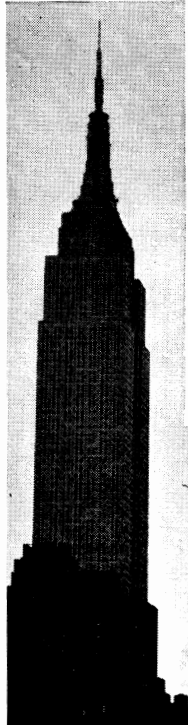
W8YCP 26,880-80-112- C-20  
W8MKE 25,920-64-135- A-20  
K8BSM 24,570-78-105- C-16  
W8PKU 22,230-65-114- C-10  
WA8TNO 20,670-65-106- A-31  
W8QDH 19,758-74-89- B-15  
W8HSK 19,404-66-98- C-19  
K8NMG 18,786-62-101- B-11  
WA8LVT 17,472-52-112- C-26  
W8DUM 16,848-72-78- B-13  
W8KC 16,005-55-97- C-16  
W8PCS 15,120-60-84- B-10  
W8KMF 13,311-51-87- B-10  
K8BFX 12,768-56-76- C-10  
W8LIC 11,928-56-71-AB-25  
K8GVK 8,985-43-65- C-15  
W8LLO 7,296-36-67- A-  
W8YBT 5,528-37-48- B-8  
W8BSR 5,310-30-59- A-37  
W8WZE 4,653-33-42- C-13  
K8AJH 4,536-36-42- C-13  
W8EJH 3,996-36-37- C-9  
W8KYD 3,967-27-49- A-12  
W8MQQ 2,958-29-34- A-8  
W8DZG 2,112-22-32- B-12  
W8LWH 2,046-22-31- B-4  
W8AEB 1,482-18-26- A-4  
K8KRN 243-9-9- B-9  
K8DZR 168-7-8- A-2  
K8PYD 168-7-8- A-2  
K8PXD 3-1-1- A-1  
W8EDU (W8s AJR AZA, WA8MG1) 237,762-189-420- C-64  
WA8LJK (WA8s ADJ OHS RCN) 51,243-93-184-AB-39  
W8DKI (W8DKI WA8PZA) 6,692-39-57- C-8

*Northern New Jersey*

W2VJN 1,543,566-400-1258- C-78  
K2GUN 731,442-303-808- C-71  
W2BCRX 471,096-216-727-AC-70  
W2HUG 240,054-186-481- A-56  
WA2HU 200,940-170-394- B-60  
WA2VSO 167,844-142-394- B-65  
K2NDL 165,825-165-335- B-60  
W2KHT 150,213-161-311- B-40  
K2KFP 147,888-158-312- B-40  
W2LYO 121,365-155-261- B-32  
W2BRJ 87,123-113-257- A-54  
W2BRK 85,122-132-324- A-4  
W2IWP 74,520-120-207- A-31  
W2HL 72,324-123-196- C-18  
W2BNZU 71,253-91-261- A-10  
W2BGO 66,708-109-204- A-42  
W2NEP 61,605-111-185- A-18  
W2DMJ 55,536-104-178- A-22  
W2BTF 55,200-92-200- A-32  
K2AEC 45,600-80-190- B-55  
WA2ZEZ 42,120-90-156- B-38  
W2JKH 18,863-73-77- A-10  
W2BPMK 8,775-39-75- A-9  
W2CIY 8,178-47-58- B-12  
W2ADP 5,957-37-55- A-26  
W2OHK 5,358-38-47- C-  
WA2IDM 2,772-28-33- B-6  
W2BNLV 2,415-23-36- A-21  
W2VLS 330-10-11- A-  
W2MNV 243-9-9- A-7  
K2USA (4 oprs.) 529,970-226-785- C-60  
WB2WID (WB2s UGX WID) 31,434-62-160- A-34

**MIDWEST DIVISION**

*Iowa*  
W0FDL 443,667-259-571- C-60  
W0HNA 300,120-205-488- C-60  
W0CQC 139,464-156-298- B-49  
W0BSY 130,032-144-301- C-46  
WA9KXJ 5,700-38-50- A-12  
WA9KST 2,550-25-34- B-13  
*Kansas*  
W0INH 70,110-123-190- C-31  
K0BYC 24,024-77-104- A-53  
W0WPL 13,635-45-101- B-44  
W0IEM 9,798-46-71- B-29  
*Missouri*  
W0BMM 402,054-226-593- C-75  
W0TRD 347,424-224-517- C-63  
WA0EMS 336,384-192-584- C-55  
W0OAW 267,243-229-389-BC-74  
W0RSZ 74,400-120-207- B-55  
K0GVS 44,982-98-153- C-12  
W0GAX 42,777-97-147- B-  
WA0FV 40,185-95-141- A-48  
K0TPI 31,050-75-138- C-  
K0GPF 16,356-47-116- A-



You think you have a poor location? This is where W2LEJ radiates from! As Dick puts it, "this QTH is hardly ham's heaven. The beam is 16 floors above street level right in the middle of Manhattan, only a few blocks from the Empire State building." Gear in use for the test was a KWM-2, 30L-1. Final phone score, in spite of the high-noise problem, a respectable 118-K.

**HUDSON DIVISION**  
*Eastern New York*  
W2MEL 1,173-395-331-1183- C-80  
WA2OJD 576,816-244-788- C-54  
W2HO 559,802-241-744- C-72  
W2HSZ 327,375-225-485- B-45  
WB2YXN 47,376-112-144-AC-39  
WB2UDF 38,916-69-188- A-33  
W2A WF 34,428-76-151-BC-15  
K2AJA 28,560-83-119- B-7  
WB2HBI 20,460-62-110- A-  
WB2UVD 10,767-37-97- A-37  
W2IP 3,132-29-36- B-  
WB2WRH 192-8-8- A-1  
K2SSX/2 48-4-4-AC-1  
W2YWQ (W2Y WQ, WA2CFG) 339,270-215-526- B-84  
N.Y.C.-L.I.  
WB2CKS 1,166,499-339-1157- C-80

K6JPL 12,996-57-76-B-12  
 WA6NOH 10,086-41-82-A-33  
 WA6OXO 2,139-23-31-A-24

Nebraska

W0IDW 258,630-185-466-ABC-  
 K9OAL 2,214-18-41-A-9

NEW ENGLAND DIVISION

Connecticut

W1BIH 1,268,064-336-1258-C-71  
 W1ECH 850,626-301-942-B-70  
 K1ZND 731,557-277-381-A-70  
 W1BGD\* 429,885-233-615-C-40  
 K1ZVU 340,416-192-591-C-35  
 W1DIT 220,800-184-400-C-51  
 W1CNU 211,464-189-356-B-45  
 W1TX 176,472-152-387-ABC-33  
 W1WPO\* 157,950-117-450-C-  
 W1AH 150,398-139-367-BC-55  
 W1AJO 134,808-137-328-B-33  
 W1BDI 113,230-130-291-BC-37  
 W1FTX 94,119-137-229-B-28  
 W1GYE 85,320-90-316-C-30  
 W1ZJZ 75,810-95-266-AC-  
 K9CVO/1 73,715-115-214-AB-50  
 W1WY 53,217-81-225-AC-21  
 W1AICQW 27,454-74-124-A-37  
 K1ETW 25,620-70-122-A-37  
 W1EZM 17,172-54-106-A-29  
 K1THQ 3,978-26-51-A-3  
 W1AFGN 1,932-23-28-B-4  
 W1LVQ\* 300-10-10-B-1  
 W1AW (W1s QIS WPR,  
 W1ACYT)  
 97,920-120-272-C-

Eastern Massachusetts

K1DIR 1,817,174-382-1583-C-81  
 W1BPW 1,470,450-350-1428-AC-68  
 W1JYH 1,401,177-359-1301-C-64  
 K1UHY 929,781-309-1003-C-60  
 K1YKT 638,006-286-800-C-65  
 K1EUF 591,336-258-784-C-  
 K1CDN 453,960-291-520-C-66  
 K2CHQ/1 400,527-233-573-C-56  
 W1FJZ 376,380-246-510-C-53  
 W1EHT 255,348-164-519-B-50  
 W1NTY 108,120-136-265-C-30  
 W1MO 80,400-134-200-AB-17  
 W1BQL 72,930-110-221-A-33  
 W1AGR 72,105-115-209-B-  
 K1ETN 37,350-75-166-C-18  
 W1DDO 29,700-99-100-A-19  
 W1PLJ 4,836-31-52-B-12  
 K1UCA 3,552-32-38-B-12

Maine

W3MQR/1 2,442-22-37-B-

New Hampshire

W1DITY 209,520-180-388-C-53  
 W1DYE/1 156,738-151-346-A-20  
 W1DXB 37,944-72-177-A-47  
 W1AFCN 21,905-65-113-A-4  
 K7LUP/1 11,868-46-86-B-20

Rhode Island

W1GOG 287,028-201-476-B-51  
 W1AGP 127,800-150-284-A-38  
 W1YRC 70,308-108-217-C-15  
 K1UKC 34,272-84-136-B-36  
 W1ALBC 31,317-73-143-A-  
 W1RFQ 10,665-45-79-B-8  
 K1UJX 765-15-17-A-4  
 K1NQG/1 (W1s BOP GG)  
 22,525-53-178-AB-37

Vermont

K1NHR 44,175-93-158-B-24  
 W1ETV 22,557-73-103-A-15

Western Massachusetts

W1EOB 472,149-261-603-C-40  
 W1EUD 285,120-180-533-C-  
 W1UUK 252,486-169-498-B-49  
 W1YK (4 oprs.)  
 72,261-111-217-A-21

NORTHWESTERN DIVISION

Idaho

K7CPC 44,229-69-208-A-40  
 K7MKW 1,260-20-21-AC-5

DIVISION LEADERS

G.W.

Single Operator Multioperator

W3BES W3YUW Atlantic  
 W9IOP W9GIM Central  
 K0ORX ..... Dakota  
 W4NBV ..... Delta  
 W8DUS W8UM Great Lakes  
 W2VJN K2USA Hudson  
 W0FDL ..... Midwest  
 K1DIR W1AW New England  
 W7MX W7SFA Northwestern  
 W6WX W6UMI Pacific  
 W4KFC W4BVV Roanoke  
 W5DQV ..... Rocky Mountain  
 W4LCP W4ZXI Southeastern  
 W6ITA W6RW Southwestern  
 W5BRR W5AC West Gulf  
 3C2NV 3C5US Canadian

Phone

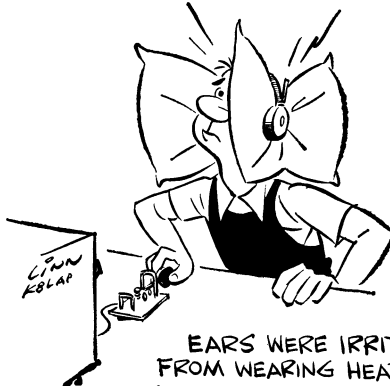
Single Operator Multioperator

W3BES W3MSK  
 W9EWC .....  
 K0EIA W0IVZ  
 W4NBV .....  
 K8DOC WA8GUF  
 W2FON K2GL  
 WA0EMS W0LTE  
 K1DIR W1YQF  
 W7ESK .....  
 W6OHJ W6UMI  
 W4QCW W4BVV  
 W0GAA .....  
 W4AXE W4ZY8  
 W6ITA W6CCP  
 W5KTR W5EHY  
 VE1PL 3C3FHO

Montana  
 K7ABV 114,912-126-304-C-25  
 W7QB 20,223-63-107-A-20  
 Oregon  
 W7BTH 64,386-98-219-C-21  
 W7GCR 57,672-72-272-A-39  
 W7PJC 52,248-84-209-C-35  
 WA7DAC 28,896-43-224-A-50  
 WA7ANB 27,537-67-137-BC-26  
 W7YEX 21,546-57-126-C-24  
 W7ACC/7 10,701-41-87-C-24  
 WA7CAC 9,657-37-87-A-24  
 K7KCZ 231-7-11-B-5

W6CNA 94,572-111-284-C-60  
 WB8TOJ 90,210-97-310-B-68  
 W6AW 16,680-40-139-B-17  
 W6RGG (K6ALH, W6RGG)  
 532,080-240-739-C-80  
 Sacramento Valley  
 W6NKR 390,661-241-541-C-72  
 W6GRX/6 309,843-199-519-C-66  
 W6EOU 237,744-156-508-C-76  
 WA6JDT 19,293-59-109-A-21  
 K6DQB 4,500-30-50-A-19  
 K6TWE 2,601-17-51-A-8  
 W6BLL 756-14-18-B-

W6JKJ 275,310-190-483-C-42  
 W6ISQ 258,336-184-468-C-45  
 WA6YMX 210,864-184-382-C-76  
 W6DZZ 199,920-170-392-C-50  
 VE3DXV/W6  
 196,992-152-432-C-57  
 K6HOR 157,320-152-345-C-44  
 W6VWR 124,848-136-306-C-30  
 W6BKBK 81,732-98-278-B-59  
 W6PLS 77,409-109-237-C-32  
 K6CQF 56,604-106-178-C-  
 W6CBE 55,350-90-205-C-24  
 W6BKRW 50,160-80-209-A-36  
 W6ATO 42,240-64-220-C-  
 W6KHS 36,654-82-149-18  
 W6QDE 28,296-72-131-C-33  
 W6CLM 27,456-64-143-C-39  
 K6TZX 16,929-57-99-A-20  
 WB6MBL 9,360-40-78-A-11  
 K6VFN/6 3,000-25-40-A-8  
 W6CLZ 2,736-19-48-B-7  
 WN6UOL 84-4-7-A-2  
 W6UMI (W6UMI, WA6SII,  
 WB6KIG)  
 657,066-246-933-C-  
 W6GQK (W6s GQK SR)  
 580,554-234-827-C-87  
 K6LY (W5FPI, W7YAQ,  
 VE3DRV)  
 236,493-171-461-C-49



ROANOKE DIVISION

North Carolina

W40MW 210,160-142-494-C-54  
 W4TMR 125,874-126-333-A-60  
 W4DUQU/4 76,590-111-230-A-23  
 WA4UX0 27,864-72-129-A-30  
 WA4LSA 24,388-67-122-C-  
 W4VON 912-16-19-C-6  
 WN4ERT 528-11-16-A-0

South Carolina

WA4IKU 657,720-290-756-C-80  
 W4DMT 263,670-170-517-AB-70

Virginia

W4KFC 1,749,840-368-1585-C-74  
 W4CKD 659,232-327-672-C-68  
 W4PTR 649,587-271-799-C-72  
 W6YTR 620,046-266-777-B-66  
 W4DKU 392,418-234-559-C-47  
 W4ZSH 359,315-235-511-C-65  
 W4CQI 316,992-208-508-B-42  
 K4GSS 309,843-199-521-A-54  
 W4DVT 271,846-218-415-C-55  
 WA4IVL 201,960-153-441-C-48  
 W4MOJ 189,366-178-351-C-54  
 K4WUY 167,739-143-391-C-31  
 W4CRW 158,925-163-325-A-62  
 W4ZM 129,438-153-282-C-18  
 K4AEV 119,136-136-292-C-12  
 W4GF 85,120-112-254-C-18  
 W4AMP 21,948-62-118-B-22  
 W4ZSH 12,535-57-85-B-  
 W4KMS 12,084-53-76-B-15  
 K4UYZ 8,556-46-62-A-15  
 W4YZC 5,916-34-68-C-5

Washington  
 W7MX 246,510-165-498-C-56  
 W7VRO 214,245-135-529-C-55  
 W7RGL 36,893-79-156-C-25  
 W7CRF 17,568-48-122-B-10  
 W7IEU 13,923-61-91-A-  
 WA7BDF 9,849-49-67-A-30  
 WA7FOE 5,184-24-72-A-15  
 W7DZW 3,425-25-47-B-10  
 W7SFA (W7s DC HAX SFA)  
 1,095,120-270-1352-AC-96

PACIFIC DIVISION

East Bay  
 WA6IVN 406,575-195-698-C-51  
 W6LLD 387,168-218-593-C-60  
 W6BSY 217,405-183-396-C-44  
 W6EWN 208,656-168-414-C-23  
 W6PQW 180,960-104-580-C-  
 W6KJS 159,294-139-382-C-33  
 W6FLT 117,936-112-351-C-50  
 WA6HAE 101,205-117-293-C-30

San Francisco

W6WB 393,543-219-599-C-75  
 WA6IVM 337,746-181-622-C-61  
 W6ERS 560,232-251-744-C-85  
 K6ANP 249,975-165-506-C-70  
 W6BIP 176,565-149-395-C-40  
 W6CYV 65,007-93-233-C-20

San Joaquin Valley

W6UJ 429,495-209-685-C-80  
 W6KTW 261,096-184-473-C-61  
 W6QQW 15,411-49-103-C-37  
 W6BYH 2,310-32-35-A-7  
 W6FYM 1,827-21-29-C-7  
 W6MMH 1,425-19-25-B-7

Santa Clara Valley

W6WX 828,828-276-1001-C-68  
 W6CUF 792,945-263-1005-C-66  
 W6HOC 582,876-252-771-C-68  
 K6ERY 323,010-185-582-C-40  
 W6KEV 316,932-196-539-C-48  
 WA6QGW 288,900-214-450-C-36

W4NKE 5,250-35-50-B-13	K5STL 335,475-213-525-C-72	W4AHOM 3,534-31-38-C-	Georgia
W4JVN 390-10-13-A-3	W5DWB 202,491-151-477-AB-40	W4AWAO 3,108-28-37-C-7	W4DXI 574,740-279-689-AC-79
W4BVV (7 opers.)	W5QBV 23,010-65-118-C-18	K4KJD 1,326-17-26-C-7	W4ACZM 12,831-47-91-A-25
4,790,980-477-3348-AC-96	K5MAT 10,056-48-74-A-17	WB4ADT 1,134-18-21-A-9	W4AEPM 2,886-26-37-A-12
K4ZA/4 (5 opers.)	Utah	WN4ENX 48-4-4-A-1	WB4DRA 75-5-5-A-6
1,441,650-350-1373-3-48	W7NPU 280,670-170-565-C-65	Eastern Florida	Western Florida
W4KXV (5 opers.)	K7OXB 94,500-195-300-C-30	W4LCP 949,494-329-962-C-76	K4OA 274,023-199-459-C-49
1,199,622-323-1238-AC-48	W7EZC 5,538-26-71-A-14	W4BRB 707,183-287-819-A-85	
West Virginia	Wyoming	K4YYL 508,515-251-755-C-65	
W48QYK 10,920-56-65-A-34	W7PSO 70,886-102-231-C-29	W4WYJ 288,363-216-447-A-44	<b>SOUTHWESTERN DIVISION</b>
W8BKK 2,016-24-28-A-		W4KET 243,747-219-371-C-39	Arizona
W48HSB 1,350-18-25-A-11		W4HOS 219,024-208-351-B-56	W0ERU/7 552,500-260-714-C-87
	<b>SOUTHEASTERN DIVISION</b>	W4EIE 194,856-184-353-C-53	W7PGX 440,073-243-605-C-66
	Alabama	W4FRO 119,103-150-285-A-27	W7AAY 284,598-163-582-C-61
	W4GRG 635,964-268-791-C-80	W4FZW 108,054-138-261-A-35	W7IMA 272,550-230-395-B-48
	W4FVY 205,590-178-385-C-39	W4BYB 70,956-81-292-A-58	W7ATV 208,054-193-360-C-51
	W4CGS 187,813-188-333-C-42	WB4DJT 68,587-107-214-B-58	W7ENA 9,980-72-151-A-20
	W4KVC 177,855-167-355-C-65	K4DGL 20,352-72-122-A-19	K7TVS 9,960-40-83-A-49
	W4DII 101,010-130-259-C-31	W4ZOK 21,390-02-115-B-34	W7UUU 2,574-26-33-A-16
	W4NML 67,710-122-185-C-33	K4YBE 5,880-40-49-B-14	Los Angeles
	W4USM 62,376-113-184-C-14	W4ASDK 2,958-29-34-A-12	W6ITA 1,160,583-283-1367-C-84
	K6SRM/4 43,776-96-162-B-30	W4ZXX (5 opers.) 1,213,112-347-1166-C-96	W6NJU 663,000-250-884-C-60
	K4WSE 25,338-82-103-B-47	W4ZYQ (W4s ZYQ 63) 27,784-92-102-C40	W46EPQ 605,772-237-852-C-76
	K9KBW/4 22,152-71-104-B-18		

Over 300 QSOs/band -- DX

	75	40	20	15	10		75	40	20	15	10
CR6GM					333	OH2AM*			1388	1159	504
VQ9AR			420			OK1MP			343	613	315
ZD3G			1966			ON4NM				503	
ZD5R			483	954	573	ON4ZU			366		620
ZS4B			505			ON5GF				445	
ZS6DW			799	471	921	OZ7BG					359
ZS6FN					323	OZ9SL			327	963	430
ZS8L			368	418	492	PA0DEC				359	
3C3FJZ/SU*			1034	466	341	PA0UC					384
5N2AAF			395	437	838	PA0XPQ			445	668	1115
7X0AH			457			SM4CLH					338
9Q5FV				327	411	SM4CMG				483	413
						SM6CAS*			646	752	726
EP2BQ			648			SM6DLL			363	731	
EP3AM			847	587	440	SM0BUO				343	365
HL9US*				440		V0WL					
JA1CIB				633		VFXWKE					345
JA1CG				647		V5ARTEK*				492	
JA1OCA				455		V3ADR					507
JA1MIN				521		V46XG				651	
JA8SW				404		V1ITU*			438	775	647
KA2JP				437							
KA7AB			460	764	722	W0ORA				522	
KA9MF*			401	336	820	W18XAL	388	807	794	1216	1224
KG6IJ*				482	428	W1K9AI					318
KR6AB						W1PJC			352	666	785
VU2KV			355			W17EBK			918	560	
ZC4FN					603	W17GAK		407			
						W17WAH*				570	341
DJ2YA			1046	1042	843	W1P4AST			1498	915	913
DJ2YA				627		W1V4AM			842	584	1092
DJ6QT			987	1150	1101	W1Z5SQ			379		682
DJ6TS*			1111	874	429	W1Z2AZ					530
DJ9LI				559		W1Z2KR					430
DL4NS				321		W1Z5RB			694	1328	567
DL6VP					442	W1Z5RS			516	655	1378
DL6WE					308	W1Z7NH			633	589	691
DL7LJ					370	W1ZSOB			379	525	922
DL8PC				421							
DL8RM			334			DUIFH			678		330
DL9PU				577	683	W1G6AQ					472
DL0EV*				339	351	W1H6BZF					802
EA2EL				320		W1H6IJ			1027	1107	1686
F2SI			311	532		W1H6UL			686	890	1498
F2YS					325	W1PAN/KH6		494	555	553	1062
F3KW			938	1375	729	W1X6DB			462	445	
G2QT				467	562	W1K2FU		318	1197	329	553
G3CAZ			448	338	612	W1K3ARX			404		
G3IAR			335	665	670	W1K1AR			664	429	595
G3LNO				443		W1K1AG			328	334	337
G3SME*			380	509	514	W1K1KG			871	685	732
G3UML			650	557	650	W1L3QH			888	450	477
G3USF					561						
G4JZ			451	394	1234	W1E6EF					574
GB2DX*			607	1232	636	W1E6EZ			763	999	1382
GM3BCL					874	W1CX2CN					815
HB9DX				339		W1CX9CO			556	432	522
I1BAF			1197	1365		W1HK3RQ			1961	1588	773
I1FLD			363	433	377	W1HK4KL			1360	1280	527
I1KPK			418		425	W1B1BYK/7			424	724	367
I1MOL			1014			W1Y1CK			371		
I1QMJ			563			W1PY2NM*			1378	571	527
I1RB*			534	690		W1YV5BPG			667	689	339
IS1VAZ			560	459	375	W18RIG					468
LA1H			335	371							

\*Multi-operator Station.

W6TED 493,506-222-741- C-50  
W6MUB 340,380-185-610- C-68  
WB6IQI 255,430-178-479- C-45  
W6VNJ 234,468-167-468- C-47  
W6FSJ 228,150-169-450- -  
W6RCV 170,940-140-407- C-46  
K6YYQ 162,540-140-387- C-68  
WB6LED 157,500-125-420- C-50  
WB6NEX 152,862-146-349- C-53  
K6YRD 148,365-135-367- C-54  
W6AM 119,246-109-366- C-40  
W6PQT 94,656-136-232- C-30  
W6EJJ 80,640-112-240-A-C-56  
WB6MOC 60,300-100-201- C-6  
W6JZP 52,170- 94-185- C-26  
W6FRZ 50,730- 89-190- C-32  
W6AURY 49,170-110-149- C-32  
W6AKHK 45,075- 75-201- A-50  
W6APH 43,788- 89-164- C-54  
W6ONG 41,736- 74-188- A-30  
W6IBD 41,712- 88-158- -  
WB6UHF 36,465- 65-187- A-22  
W6UED 23,598- 57-414- -  
W6TMP 21,384- 66-108- -  
W6HS 4,875- 25- 65- C- 8  
W6BUD 2,052- 18- 38- C- 4  
W6FZX 1,638- 21- 26- A- 6  
WB6TMC 1,620- 18- 30- A- 7  
W6DGH 1,482- 19- 26- C- 2  
K6SUC 990- 15- 22- B- 4  
WB6LCS/6 210- 7- 10- B- 1  
W6AM/6 27- 3- 3- C- 1  
W6RW (9 oprs.)  
2,734,884-418-2180-AC-94  
K6CEO (K6s CEO DDO)  
217,800-150-484- C-70  
WB6HGU (WB6s HGU NWK)  
105,948-108-327- C-96  
K6OYG (K6s OYG TTJ)  
55,404- 76-245- C-67

**Orange**

WB6CWD 466,320-240-650- C-60  
W6SRF 264,075-175-503- C-40  
W6ATLL 146,700-150-326- A-56  
W6AMO 44,814- 77-194- A-50  
W6QFU 33,406- 85-131- B-34  
WB6RTJ 21,285- 55-129- C-19  
3C2ATU/W6  
15,264- 53- 96- C-  
WB6PFV 1,152- 13- 32- A-10  
W6ANN (W6s ANN DFY,  
WA6GLD)  
737,586-261-942- C-88  
W6CCP (W6s CCP HOH)  
436,278-178-838-

**Santa Barbara**

W6AGV 219,000-200-365- C-52  
W6ULS 150,732-159-316- C-28  
WB6SCQ 12,804- 44- 97- A-  
W6GEB 3,276- 28- 39- A- 6  
WB6DPV 3,128- 23- 46- A-10

**WEST GULF DIVISION**

**Northern Texas**

WA5BFB (WA5CBE, opr.)  
544,877-279-651- C-79  
WA5JMK 182,880-160-381- C-35  
WA5RQA 102,582-139-246- C-39  
W5OBS 67,628-106-214- C-53  
WA5JSI 44,232- 97-152- C-50  
WA5PQI 31,440- 80-131- A-25  
W5QG 9,348- 41- 76- A-13  
W5PQY 8,280- 40- 69- C-19  
WA5LFD 5,022- 31- 54- A-  
WA5BC 4,752- 33- 48- B-28  
WA5AUR/5 1,122- 17- 22- A-10  
W5MSG 540- 12- 15- B- 7  
WA5NHI 126- 6- 7- A- 5

**Oklahoma**

W8KGJ 265,065-205-431- B-55  
K5VTA 170,172-163-350- B-65  
K5JVF 24,603- 59-140- B-40

**DX CONTINENTAL CHAMPIONS**

**C.W.**

**Phone**

Single Operator	Multipoperator	Single Operator	Multipoperator
ZD8J	.....	Africa	ZS6DW
JA1CWZ	UAØKFG	Asia	KA7AB
G13OQR	OH2AM	Europe	DJ6QT
H1XAL	KL7AIZ	N. A.	H1XAL
KH6JL	.....	Oceania	KH6IJ
PY2BGL	LU1DAY	S. A.	HK3RQ

Single-operator continental DX champions win the plaque.

K5JZN (K5JZN, WA5KFS)  
47,460- 70-226- C-26  
**Southern Texas**  
W5BRR 790,128-279-944- C-89  
K5ABV 361,383-233-517- A-72  
W5MCO 109,388-147-248-AC-48  
K5QMC 81,360-120-226- B-72  
W5LJT 54,495-105-173- C-13  
WA5OKC 7,296- 38- 64- A-14  
WA5ENK 3,042- 26- 39- A-36  
W5ULN 612- 12- 17- A- 4  
W5ACL 126- 6- 7- C- 1  
W5AC (7 oprs.)  
386,022-202-637- C-96

VE3FID 12,528- 58- 72- C- 9  
VE3BS 11,715- 55- 71- A- 9  
3C3MZ 6,480- 40- 54- B-10  
3C3EUP 3,627- 31- 39- A-  
3C3FYF (3C3s FVY GCS)  
100,764-108-311- B-55  
VE3UR (VE3s CTJ UR)  
**Saskatchewan**  
VE5PM 56,448- 98-192- B-  
VE5DP 15,219- 57- 89- B-25  
VE5DZ 1,326- 17- 27- A-12  
3C5US (VE5s DK UF)  
491,385-235-722- C-85

**Seychelles**  
VQ9AR 602,280-140-1463- A-26  
**Swaziland**  
ZD5M 25,245- 51- 165- A- 7  
**Ascension Island**  
ZD8J 1,380,942-214-2151- A-48  
ZD8BUD 123,165-105- 391- A-  
**South Africa**  
ZS5RS 700,770-142-1645- A-44  
ZS6FN 258,984-132- 654- A-24  
ZS6AJU 152,746-106- 481- A-18  
ZS6CW 28,812- 49- 196- A- 7  
ZS10 56- 4- 5- A-18

**CANADIAN DIVISION**

**Maritime**

VO1HH 195,951-147-475- B-33  
VO1AW 187,085-141-395-AC-40  
VE1EK 55,536- 89-208- A-32  
VE1IM 47,472- 92-172- -  
VE1AE 28,224- 49-192- A-30  
3C1ZT 10,125- 45- 75- A-31

**Quebec**

3C2NV 605,472-272-742- A-85  
VE2WA 377,316-233-564- C-55  
3C2BV 305,250-185-550- B-49  
VE2AYU 278,970-170-547- A-81  
3C2DCW (VE2s BOW DCW)  
92,344-119-259- A-49

**Ontario**

VE3ES 126,048- 96-438- C-41  
VE3DBB 53,400- 89-200- B-35  
VE3WB 52,155- 95-183- B-47  
VE3LJ 26,331- 67-131- C-36

3C6ASH 43,452- 71-206- A-40  
VE6SX 18,144- 54-112- A-  
VE6VV 4,563- 33- 47- B-11  
3C6ATH 2,604- 28- 31- C- 6

**British Columbia**

VE7HQ 8,330- 35- 80- A-25

**AFRICA**

**Angola**

CR6GO 1,363,635-185-2457- B-70  
CR6AI 727,668-164-1479- B-52  
CR6CK 633,786-146-1447- A-  
**Mozambique**  
CR7CI 1,536- 16- 32- A- 2

**Canary Islands**

EA8FJ 18,048- 47- 128- A- 5  
EL2Y 253,800-120- 705- B-26

**Liberia**

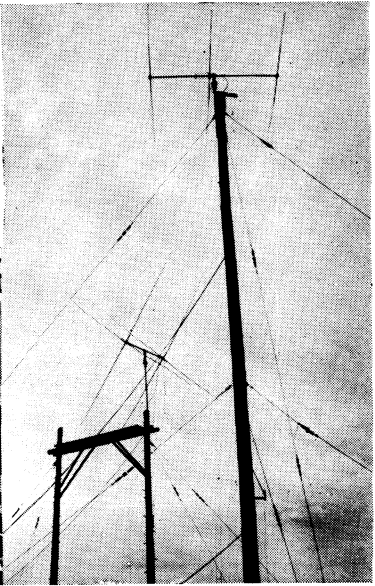
EP3AM 284,148-108- 877- B-44  
EP2BQ 142,290- 85- 558- B-  
**Tanzania**  
5H3KJ 243,712-112- 726- A-32  
**Somali Republic**  
606BW 229,308- 97- 788- C-  
**Senegal Republic**  
6W8BF 612- 12- 16- A-  
**Algeria**  
7X9AH 22,278- 47- 158- A-  
**Sierra Leone**  
9L1TL 702,918-162-1451- A-52

**ASIA**

**Iran**

EP3AM 284,148-108- 877- B-44  
EP2BQ 142,290- 85- 558- B-

A final phone effort from Asia for KA7AI did the trick to lead the continent with 1,104,846 and take a trophy back home to the U.S. Noteworthy too this year was the excellent participation by JAs on both phone and c.w.



Japan

JA1CWZ	707,940-171-1382-	A-71
JA1EUV	503,490-157-1069-	A-
JA2JAA	270,750-125-722-	B-45
JA6TQ	208,104- 92- 756-	A-28
JA5AB	184,590-105-586-	A-
JA6TQ	208,104- 92- 756-	A-28
JA5AB	184,590-105-576-	A-
JA6AKW	183,744- 87- 707-	A-
JA1MIN	182,736- 94- 648-	A-
JA1E2T	161,298-103-522-	C- 8
KA2JP	151,872-113-448-	C-17
JA1JGK	137,514- 86- 533-	A-
JA3IGG	126-144- 73- 576-	A-42
JA7FC	92,133- 87- 359-	A-
JA2HO	81,120- 80- 338-	A-
JA2LA	65,650- 65- 338-	A-40
JA8SW	52,058- 67- 259-	A-26
JA1NEC	47,336- 97- 488-	A-29
JA2CPK	24,976- 56- 149-	A-49
JA8BYP	16,695- 45- 124-	A-
JA2FCR	14,314- 34- 140-	A-
JA1JUQ	12,750- 34- 128-	A-
JA2BTE	12,750- 34- 128-	A-
JA2BTE	11,375- 35- 109-	A-23
JA2JTH	10,836- 36- 103-	A-22
JA8GR	10,296- 22- 156-	A- 5
JA1LXE	9,594- 26- 133-	A-10
JA1QXC	6,678- 18- 124-	A-
JA7UQ	6,650- 25- 90-	A-
JA8BZL	5,038- 22- 77-	A-10
JA2HFB	4,810- 26- 62-	A-
JA3HCJ	4,460- 20- 75-	A-14
JA2IRI	4,095- 21- 65-	A-
JA1SKE	3,927- 17- 77-	A- 8
JA1SMA	3,102- 22- 49-	A-17
JA7BP	3,021- 19- 63-	A-
JA8BVX	2,890- 13- 57-	A-16
JA8QA	2,720- 16- 57-	A-
JA1ACA	2,538- 18- 47-	A-
JA1RST	1,441- 11- 44-	A-
JA2BNN	1,248- 16- 28-	A-
JA2AIR	990- 10- 33-	A- 5
JA5BWW	840- 10- 28-	A-
JA1BZM	495- 11- 15-	A- 3
JA7JW	483- 7- 24-	A- 3
JA2GRM	440- 10- 15-	A-
JA3EGC	264- 8- 11-	A-
JA1WWY	198- 6- 12-	A-
JA8JI	15- 1- 5-	A- 3
JA4AEZ	6- 1- 2-	A-
KA9MF	(6 ops.) 213,900-115- 620-	C-

Ryukyu Islands

KR6AG	606- 6- 37-	AB- 3
-------	-------------	-------

Bahrain

MP4BFK	6,048- 24- 84-	A- 5
--------	----------------	------

Lebanon

OD5EJ	245,767-118- 694-	A-
OD5FC	12,936- 42- 103-	A-

Turkey

TA2AC	178,752- 98- 608-	A-36
-------	-------------------	------

Asiatic Russian S. F. S. R.

UA0KCO	200,208- 97- 688-	B-
UW9OU	131,976- 52- 846-	A-
UA9PP	102,204- 51- 523-	B-
UA0LH	62,400- 52- 400-	A-



Russian c.w. multioperator competition is terrific. The UA0KFG crew led all activity from the Asiatic Russian S.F.S.R. with 826-K points. From left to right, relaxing after the rigors of 1659 exchanges are UW0FM, UW0FK and UA0ER.

UA0TD	25,650- 38- 225-	A-
UA9WS	25,272- 54- 159-	A-
UA0TR	20,039- 29- 231-	A-13
UA0KCA	14,964- 29- 172-	B-
UA9MR	13,405- 35- 130-	A-
UA9FV	11,616- 32- 121-	A-
UA9AB	11,556- 36- 107-	B-
UA9WR	7,599- 29- 87-	A-
UA0LS	7,344- 24- 102-	A-
UA9PO	4,347- 23- 63-	A-
UA9JL	1,482- 19- 26-	A-
UW0PT	1,260- 15- 28-	B-
UA9KCC	900- 15- 20-	B-
UA0KDA	396- 3- 44-	B-
UA0KFG	(5 ops.) 825,684-166-1659-	B-67
UA0KZB	(multiopr.) 352,170-105-1118-	B-
UA0KCO	(2 ops.) 207,854-103- 668-	B-
UA0KUV	(3 ops.) 161,280- 80- 672-	B-
UA0KIA	(4 ops.) 79,797- 67- 397-	B-
UA0KCS	(2 ops.) 10,602- 31- 114-	A-
UA9KTE	(2 ops.) 3,935- 19- 69-	A-

Turkoman

UH8DH	4,248- 24- 59-	A-
-------	----------------	----

Uzbek

UI8AI	15,840- 30- 176-	A-
-------	------------------	----

Kazakh

UL7CG	21,600- 45- 162-	B-
UL7JE	19,920- 40- 169-	A-
UL7RL	15,327- 39- 131-	A-
UL7GW	13,020- 31- 140-	A-
UL7KAA	3,240- 20- 54-	B-

Andaman and Nicobar

VU2DIA	18,768- 34- 184-	A-
--------	------------------	----

India

VU2KV	54,990- 45- 408-	A-
-------	------------------	----

VU2MSK	48,896- 64- 261-	A-16
VU2GW	6,075- 27- 75-	A-

Saudi Arabia

7Z3AB	25,812- 36- 239-	B-11
-------	------------------	------

Singapore

9V1MT	2,256- 16- 47-	A-
9V1OB	76- 2- 13-	A- 6

EUROPE

Portugal

CT1OI	314,900-134- 785-	A-
CT1IQ	73,073- 77- 321-	A-
CT1LN	8,568- 34- 84-	A-

Germany

DL6WD	913,740-194-1570-	B-
DL7AA	891,990-187-1595-	B-80
DL1JW	782,320-176-1507-	B-55
DL8KJ	666,630-162-1374-	B-55
DM4WPL	567,900-150-1262-	B-
DJ2XP	532,800-200- 888-	A-
DL1RK	381,120-160- 794-	A-
DJ2RT	285,798-109- 874-	B-
DK1CU	192,920-106- 609-	A-
DL6WE	125,557-103- 409-	A-
DL6VP	108,288- 94- 387-	B-27
DJ4HR	95,496- 92- 346-	A-
DL6DF	77,292- 76- 339-	A-
DL7MQ	77,112- 84- 306-	A-27
DL9EM	67,782- 82- 284-	B-
DL2JO	62,964- 81- 259-	AB-17
DM3LOG	59,882- 79- 257-	B-
DL1JC	49,794- 86- 205-	A-
DL1QT	49,608- 78- 212-	B- 9
DL3CM	49,059- 79- 207-	B-
DM3YPD	46,605- 65- 239-	A-
DL4ZI	45,990- 70- 219-	B-
DL1TA	41,280- 64- 215-	A-15
DK1DB	37,725- 75- 168-	A-
DL4LA	35,055- 57- 205-	A-34
DM3VGO	30,105- 45- 223-	A-
DM4YEL	24,705- 61- 135-	A-

DL5TK	24,552- 44- 187-	A-25
DL1MD	18,792- 58- 108-	B-20
DJ6OM	6,231- 31- 62-	A-
DL4EC	3,795- 23- 55-	B-
DL3WF	3,381- 23- 49-	-
DM3RMA	1,890- 14- 45-	A-
DL1LP	756- 12- 21-	A-
DM2AUG	378- 9- 14-	A-
DJ7IK	(DJ6TS, DJ7IK) 1,169,532-189-2122-	B-
DL8KO	(DJ6WD, DL8KO) 942,462-186-1689-	B-71
DL0FR	(5 ops.) 866,187-189-1528-	B-
DK1FZ	(4 ops.) 224,409-127- 589-	B-

Spain

EA3KT	201,223-121- 557-	A-55
EA3NA	45,927- 63- 243-	A-
EA2CR	11,220- 34- 110-	A-

Balearic Islands

EA6BH	10,350- 23- 150-	-
-------	------------------	---

Republic of Ireland

EI9J	662,590-193-1280-	A-
EI5F	252,72- 54- 156-	A-
EI3AK	(multiopr.) 664,200-135-1246-	BC-

France

F8VJ	697,424-182-1278-	A-49
F8ZF	254,001-129- 711-	A-40
F5SF	251,442-122- 687-	A-49
F8TM	135,309-111- 409-	A-
F2PO	134,748-114- 395-	A-
F8TQ	51,173- 73- 235-	A-
F9BB	6,876- 36- 64-	A- 5

England

G4CP	1,446,552-222-2199-	A-40
G2RO	861,883-187-1538-	A-62
G2QT	610,050-169-1225-	A-55
G3IAR	457,530-151-1010-	A-
G2MI	432,790-162-1010-	A-52
G2DC	447,447-149-1001-	A-
G3JYP	441,450-150- 981-	A-
G3APN	233,610-130- 599-	A-
G6KQ	215,855-115- 626-	A-40
G3KMA	200,970-110- 609-	A-48
G2ATF	126,090- 90- 467-	A-24
G3XJB	64,242- 83- 258-	A-
G3VNR	55,160- 70- 263-	A-
G5AGA	42,570- 43- 330-	B- 7
G3OXI	14,835- 43- 115-	A-23
G3WP	10,179- 39- 87-	A-11
G3JFY	6,612- 38- 59-	A- 6
G3SSO	(7 ops.) 1,912,464-228-2796-	A-94
G3GRS	(8 ops.) 1,007,064-197-1704-	A-96
G3LPC	(4 ops.) 787,169-181-1454-	A-96

Ile of Man

GD3AIM	50,688- 64- 264-	A-
--------	------------------	----

Northern Ireland

G13OQR	1,886,304-224-2807-	A-70
G13SXG	(G13s OTV SXG) 1,170,112-188-2171-	A-58

TOP TEN  
Single Operator

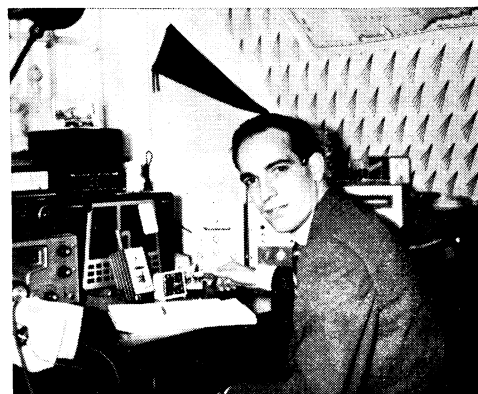
C.W.	DX	W/VE	Phone	DX
K1DIR	1,817,174	HISXAL	3,257,550.	3,727,719
W4KFC	1,749,840.	KH6IJ	3,000,954.	3,142,500
W2VJN	1,543,566.	PY2BGL	2,572,434.	3,045,120
W91OP	1,512,618.	KP4CRT	2,465,100.	2,876,246
W1BPW	1,479,450	HK0AI	2,425,686	2,798,712
W3BES	1,472,499	PY2SO	2,315,502	2,676,398
W3GRF	1,417,248	HK3RQ	2,303,235.	2,269,944
W1JYW	1,401,177.	KH6UL	2,083,200.	2,247,264
W9EWC	1,358,016.	HK3BAE	2,076,737.	2,053,350
W3MFW	1,296,552.	GI3OQR	1,886,304.	2,012,208
K8DOC	1,438,086	W6ITA	1,369,170.	
K1DIR	1,308,384.	W4QCW	1,243,350.	
W3BES	1,212,435	W3BGN	1,157,760	
W4AXE	1,157,652.	K2GXI	1,083,361.	
W4BCV	1,078,398.	K3NHL	1,065,594.	

<i>Scotland</i>		LA5GF 17,950-50-120- A-
GM3SVK 119,277- 87- 457- A-		LA2Q 14,964- 43- 116- A-24
GM2HCZ 47,586- 77- 206- A-21		LA7HJ 8,816- 38- 78- A-
<i>Wales</i>		LA1P 5,313- 23- 77- A- 5
GW3JI 828,240-203-1360- A-88		LA5SH (LA2QK, LA5SH) 264,942-123- 718- A-
GW3ITZ (6 oprs.)		
735,098-182-1347- A-96		
<i>Hungary</i>		<i>Luxembourg</i>
HA1KSA 548,640-160-1164- B-67		DJ6SI/LX 25,116- 46- 182- A-
HA5DJ 213,405-123- 590- A-		LX1LF 7,560- 30- 84- A-
HA8UH 36,835- 53- 235- B-		
HA1ZH 25,338- 41- 206- A-		<i>Bulgaria</i>
HA3MB 22,500- 60- 125- A-		LZ1YW 6,324- 31- 68- A-
HA8UF 14,157- 39- 121- A-		LZ2KDO (2 oprs.) 8,160- 34- 80- A-
HA1VE 13,968- 24- 194- B-		LZ2KRS (3 oprs.) 4,230- 15- 94- A-
HA5DA 12,936- 28- 154- A-		
HA5FE 12,330- 30- 137- B-		<i>Austria</i>
HA1VA 10,323- 37- 93- A-		OE5KE 538,720-148-1214- B-
HA3GA 4,050- 25- 54- A-		OE3PWW 309,888-128- 807- A-
HA5BI 3,705- 19- 65- A-		OE9SKI 116,430- 97- 397- A-30
HA8CT 576- 8- 24- A-		OE5CA 85,860- 81- 355- A-
HA0LL 570- 10- 19- A-		OE3AX 1,581- 17- 31- A- 8
HA5DL 168- 7- 10- A-		
HA5KDQ (HA5s DE DI FK)		<i>Finland</i>
569,772-171-1133- B-96		OH2BCZ 406,215-135-1003- B-
HA4KYB (2 oprs.)		OH1VA 353,808-144- 827- B-
534,180-145-1228- B-86		OH1AD 322,920-138- 780- B-
HA8KUC (multiopr)		OH2BCP 141,435-105- 457- A-
128,412- 87- 492- A-		OH5UQ 82,410- 82- 335- B-
HA9KOB (2 oprs.)		OH2BR 74,460- 85- 304- A-
105,588- 84- 419- B-		OH3MK 57,456- 76- 252- B-
HA1KVM (3 oprs.)		OH3MF 55,224- 78- 240- A-
88,620- 70- 423- A-		OH3YI 45,240- 65- 232- A-
HA9KOL (2 oprs.)		OH3WW 19,872- 46- 144- B-
50,034- 62- 269- A-		OH3MU 14,766- 46- 107- A-
HA8KCC (multiopr.)		OH2YL 13,299- 39- 117- B-
26,649- 47- 191- A-		OH5WH 10,197- 33- 103- A-15
HA6KNB (2 oprs.)		OH5WF 10,185- 35- 102- A-
8,439- 29- 97- A-		OH4PX 8,126- 34- 239- B-
HA5KFZ (2 oprs.)		OH6NH 6,061- 29- 70- B-
7,632- 24- 106- A-		OH5VT 4,161- 19- 73- B-
		OH1UR 1,104- 16- 23- B-
<i>Switzerland</i>		OH2AM (7 oprs.) 2,092,524-203-3436- B-
HB9JG 322,245-135- 798- B-		OH2AC (4 oprs.) 525,150- 150-167- B-44
HB9KC 229,068-126- 606- B-22		
HB9RX 137,190- 85- 556- B-20		<i>Aland Islands</i>
HB9DX 135,072- 96- 469- B-		OH0NM 54,054- 63- 286- A-
HB9AFG 2,760- 23- 40- A-		
B9Z (HB9s AFG AGH)		<i>Czechoslovakia</i>
489,978-163-1002- A-		OK1ZL 1,029,108-191-1796- C-56
<i>Italy</i>		OK1PD 622,278-181-1154- A-45
I1NT 1,248,060-155-2684- B-68		OK1AHZ 296,958-129- 752- B-
I1KE 498,582-126-1319- A-54		OK3DG 212,553-113- 630- A-
I1BLF 228,045-115- 661- A-		OK1XW 141,775-107- 459- A-
I1LGR 59,736- 76- 262- A- 8		OK1AFN 138,031- 97- 475- A-
I1HCJ 47,658- 47- 338- A-21		OK1AJR 137,196-103- 444- A-
I1HL 38,308- 61- 211- A-18		OK1SV 105,072- 88- 398- B-14
I1ER 4,743- 31- 51-AB-		OK2QX 104,805- 85- 411- A-
<i>Jan Mayen</i>		OK3CDL 100,800- 80- 420- A-
JX6XF 1,305- 15- 29- A-		OK1ACF 88,620- 84- 358- A-
<i>Norway</i>		OK3CGI 48,720- 80- 203- A-
LA1H (LA9OI, opr.)		OK2ABU 29,223- 51- 191- B-
190,855- 95- 676- A-25		OK1BV 28,476- 42- 226- B-
LA3X 36,516- 68- 179- A-29		OK1ARN 19,800- 44- 150- A-
LA6U 24,960- 65- 128- A-		OK3CGP 18,963- 49- 129- A-
LA7QI 21,546- 54- 133- A-		OK3CEG 18,093- 37- 163- A-

1968 ARRL DX COMPETITION

Phone: February 3-4, March 2-3

C.W.: February 17-18, March 16-17



On the left is **ZK1AR** with almost a million phone points and an admonition to those with duplicate contacts causing him to miss that mighty mark. From top to bottom we have **OH3YI** with 232 c.w. exchanges running all of 4 watts output on 10, 6 watts on 15 and 10 watts on 20, using a 3-band quad; **9A1AA** (DL2AA, opr.) and a very tired look after 35 hours in the car caught in an Alpine snowstorm prior to arrival in San Marino; **HK3BAE** a Colombian crackerjack operator and a close second only to **HK3RQ** for Colombian c.w. plaudits.