

Western hilltoppers (left to right): **WB6KBZ/6** of Santa Clara Valley on top of Mt. Hamilton (Lick Observatory location), George says that the  $\frac{3}{8}$  base-loaded whip mounted on the camper top worked well from that 4300-ft. spot; **K7AUO/7** multioperated by **K7IUN** **K7BVT** **W7ADV** and **W7RPT** at Timberline Campground, Mt. Adams in Washington; and **K8REG/8** at the side of Mt. Evans in Colorado, the peak is 14,240 ft. and the highest auto road in the world.

## September V.H.F. QSO PARTY RESULTS

*Enthusiasm up — Conditions down*

COMPILED BY ELLEN WHITE\*, W1YYM

SEPTEMBER 10–11, 1966, the weekend scheduled for the September ARRL VHF QSO Party was heralded earlier that week by fine conditions. By the time the contest period got under way, however, you might have known it — conditions had changed. Once again, it was a contest for the persevering.

Approximately 310 reports were received from the W/VE group, with unusually fine comments, shown elsewhere in this report.

Looking down the multiplier/band chart we can see the obvious results of poorer 6-meter conditions. Only 13 stations topped 15 sections on that band. Two, on the other hand, was the interesting band for multipliers this time around, with many stations making the minimum chart figure of 10 sections. The sixth call area was most consistent with 220 and 432 Mc. activity reports.

This was the test that took a mountain top, operators and transmitters plus all the trimmings to bring in a top score. The mountaintoppers brought in the big scores led by **K1UGQ/1** with over 48-K, **W2PEZ/1** 37-K and **K1YLU/1** with close to 24-K.

The next big ARRL V.H.F. Test will be the V.H.F. Sweepstakes, January 7–8, 1967. Rules are shown elsewhere in this issue.

Single and multioperator V.H.F. QSO Party awards are scheduled for mid-December mailing

### Soapbox

"The 6220 Club of N. J. operated from a new portable location, in New Hampshire on Pack Monadnock. In general, activity was not as good as usual and we lost out in operating time as we only had 8 operators (compared to the 12 to 14 when we are in N.J.). A wonderful contest

and camping weekend with great weather." — **W2PEZ/1**. "Just got home from Europe and lucky to find the contest on." — **K1MTJ**. "Enjoyed working the contest and look forward to January." — **K1KKK**. "**W2PEZ/1** was the top signal from N. H. and **W1DRO/1** the tops from E. Mass. These Parties are fun!" — **W1HIL**. "I was on a short trip to enjoy early autumn in Northern New England but had no contest luck until I worked **VE3CDX/W1** on Mt. Mansfield in Vermont while I was mobile." — **WA2ZPD/1**. "Ninety percent of my 2-meter contacts were on c.w. My operating time was limited due to time outs to rest my left leg which was in a cast. Conditions in R. I. were poor and where were all the So. Jersey VHFers? Kudos, again, to **K1TPK**." — **K1ABR**. "Too bad 522s can't copy s.s.b., I heard only one other station on s.s.b. during the weekend, my neighbor **W1WK**." — **K1OJQ**. "My first contest, and a lot of fun." — **W1GRK**. "Operation on 144 was with a Communicator from the car. On 6, the station was a one-half watt transistor converter with a 3-element portable beam packed up 3 miles (on the hoof) to the summit of Stratton Mountain at a 3856 ft. elevation in South-central Vermont. DX was Mt. Washington, N.H. (**WA6ADI/1**) 100 miles northwest and **W1BAR** Portland, Conn. 90 miles to the south." — **W1HDQ/1**. "C.w. on the low end of 6 and 2 was helpful in picking up **VE2**, **VE3** and **W8** for us. Good weather on Mt. Wachusett." — **K1YLU/1**. "Having 2 small children and lots of weekend company doesn't give one much time for contest operation." — **K1BUF**. "Friday night before the contest, the two-meter band was open to **VE3** and **W8**." — **W1JSM**. "A great time although I was disappointed in the 2-meter activity." — **W1DRO/1**. "Below average conditions. No temperature inversion. I heard Florida stations on bursts Saturday night but couldn't make contact. Few stations south of Connecticut were good copy on either six or two." — **K1TPK**. "We were generator powered and the generator began spewing out oil early Sunday afternoon. We thus had to close down before the closing hours. Until then, the going seemed slow at our location atop Grace Mountain, about 1650 feet above sea level." — **W1NBN/1**. "One of the highlights was working **W2PEZ/1** on 1215 Mc., 5–9 signals both ways over a distance of about 55 miles. Conditions on 220 and 432 were poor. However, real team effort seems to have paid off. **WA2FQA** saved the day, by working 7 hours to put the high power 220 Mc. rig back on the air. While it was out of commission, we heard **W2UFT/8** in West Vir-

\* Asst. Communications Mgr., ARRL.

ginia 5-8 calling CQ 220. He didn't hear our 10 watter. We'll get him next time."—*K1UGQ/1*. "My single-operator venture was quite dull with the exception of 220 Mc. and six-meter iono-scatter. The 19 sections on six were obtained without the benefit of sporadic-E or aurora. 220 was useful in providing 7 sections and 12 contacts to bolster our mediocre score. At first there was no keying in the rig because I had just completed it. When I couldn't raise W3ARW on a.m., I clipped a key into the circuit and made the contact right away. LESSON: always have c.w.!"—*K1WHS*.

"I only recently completed installing the Benton Harbor lunchbox with homebrew supply in my car and welcomed the opportunity to check it out. Eureka it worked!"—*WA2DAH/2*. "All operation was on 144 Mc. c.w. Thanks to the gang for getting on."—*W2LWI*. "A very unusual contest from many angles. WA2SOO was not competing so I had no real trouble with QRM. Most contacts were in excess of 100 miles and there was little local activity. Two meters paid off better than in the past couple of years. There seemed to be less pressure, with more time used for comments from other stations."—*K2DUR*. "The guys who have six-meter TVI should try sideband and watch their troubles disappear."—*WB2OYK*. "Not only my first v.h.f. contest but my first time on v.h.f. and it sure was a lot of fun."—*WB2JYV*. "This is the call of a military station at USA STRATCOM-CONUS Facility at Fort Monmouth, formally the Radio Propagation Agency. The site was Red Hill in Middletown, N. J. with an elevation of 220 feet. The two portable eight in West Virginia came back to us on 2 but couldn't copy us. We wish there had been more activity above 1 Kmc. Look for us in the future with higher power and better antennas."—*WB2RWB/2*. "About average band conditions for this particular time of the year. Activity on 220 and 432 in Maryland and around New York City seems to be very poor. This is one of the most enjoyable contests to work during the year."—*W2EIF*. "The Murray Hill Amateur Radio Club operated under this call."—*W2GKR/2*. "The chart you used in Sept. QST for the June report is, in my opinion, an excellent idea. Your presentation lets us check quickly and easily how our friends around the country made out. Although band conditions were not especially good here, I beat all previous efforts on 144 Mc. sections and my contacts on 432 were up. I missed skeds with K1JIX in E. Mass. and W1QWJ in W. Mass. Managed to work two stations on all four bands, W3ARW and VE3ZZZ. Next year I hope to add 1296. Keep up the good work."—*K2YCO*. "We heard W2PEZ/1 on both 6 and 2 no matter what direction our antenna faced throughout the contest."—*WB2TEO*.

"Where was everybody?"—*W4SEOP/3*. "Operated the entire contest under emergency power in the field. Finished homebrew 6-meter rig the morning of the contest."—*K3YQS/3*. "Sideband, c.w. and u.h.f. really paid off this time in spite of the efforts of a four foot black snake to provide QRM. We'd like to see more u.h.f. stations dust off their gear. 220 seems very inactive in Pennsylvania although we got and gave good signal reports."—*K3HKK/3*. "Although band openings were just a little above average and no spectacular openings developed, eager operators led to a respectable score. The new two meter 32-element collinear got a good workout. We're planning expanded operating on the higher bands in June

## DIVISION LEADERS

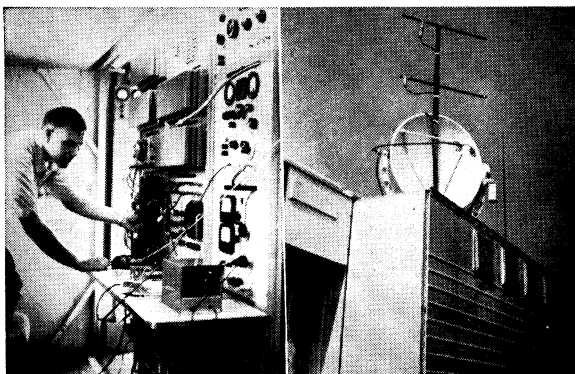
Single Operator		Multipoperator
W2EIF	Atlantic	K3MTK/3
WA9JFM	Central	WA9LIV
W0LCN	Dakota	.....
WABDXA	Delta	WA4VNP/4
WA8MPW	Great Lakes	WA8BCA
WB2PMP	Hudson	W2GKR/2
K0TLM	Midwest	W0LB/0
K1WHS	New England	K1UGQ/1
K7BBO	Northwestern	K7DBR/7
W6GDO	Pacific	WB6PXN/6
WA4LTS	Roanoke	W4TRC/4
W0AJY	Rocky Mt.	K8REG/0
K4ABT	Southeastern	.....
WB6GFD	Southwestern	W6NLO/6
W5WAX	West Gulf	K5CFM
VE2BZH/2	Canadian	VE3ZZZ

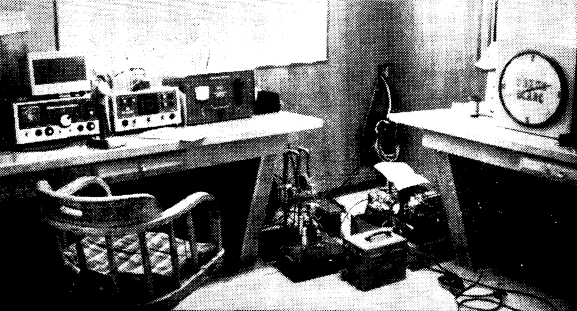
and also expect to be on in the January contest from the mountaintop."—*W3AD/3*. "A highlight for me was working Ohio on two meters, the first time in almost two years."—*WA3CBC*. "We were set up on Backbone Mountain, the highest point in Maryland, near the western border. All operation was on emergency power, and to conserve power, both receiving setups were totally transistorized."—*W8ASA/3*.

"Due to some misfortunes, the Greenville VHF Society did not get to the mountain. Of all the many contests operated, however, this was the most rewarding. I had many schedules that paid off with added sections. I found that the ability to operate all bands at the same time was profitable and lastly, morning scatter on 6 can be one of your best section helpers. Hopefully the next one will be from the mountain with K4GWY."—*WA4LTS*. "The only ones having any luck were the portables in the mountains."—*WA4UCE*. "More contacts due to more local activity. Excellent scatter on the 11th, early morning. With c.w. we could have picked up many needed sections."—*K4HQI*. "Worst local activity ever experienced, with only one very short 6-meter or opening."—*K4FJW/4*. "A typical mountain-top contest for us. Once on top of the mountain some of the gear wouldn't work. A bad generator forced us to use low power and none of our 220 and 432 skeds panned out, and it was cold."—*W4FDO/4*.

"I did work more sections than in any other contest, (skip not counting) by groundwave. I heard Oklahoma City stations working skip in Virginia, N. C. and Tennessee about 2300 GMT Sept. 10. I couldn't hear anything here, so guess I was just on the edge of the skip zone. The use of c.w. added several sections that I couldn't work on phone. My best contact was c.w. to c.w. with WA4MBZ in Memphis, about 300 miles. Iono-scatter Sunday morning but no takers. I heard K8OXC on sideband very well."—*W5WAX*. "No openings at all but ground wave was in and out."—*WA5DXA*. "The generator failed, the two-meter converter was ineffective and no 6-meter opening. Not the lowest score I've posted, but close!"—*W5IXR/5*. "This is a new experience, quite different from low-band contests. Six was shot. However, I did manage

New multipoperator muscle in the Hudson Division and a group to watch in the future, the Red White and Blue Group, **WB2RWB/2**. Shown is WA4HRX at the 220 and 432 station inside a mobile van. Antennas used for those bands, 7-L 220 Mc. and 11-L 432 Mc., fed with RG-9 and 1/4-wave beercan coaxial sleeve matching—wooden booms. The six foot dish covers 1-10 Kmc.





The top six-meter section total in the country (21) was posted by **W3KWH**, the Steel City Amateur Radio Club of W. Pa., manned solo by **W3ZGI**. Here's the six-meter operating position with an old **6C21** experimental final on the right.

to gain quite a few points through working locals." — **WA5KBH**.

"Here in the Orange Section activity was nil. Even usual activity was low on both 6 and 2. Sorely missed were **K6BPC/6** and **K6OKC/6** which usually supply a Santa Barbara multiplier. Plan to have beams up 50 feet and a two-meter converter by VHF SS time." — **WB6PHO**. "Longhaul tropo-propagation seemed worse than usual but local low power activity was higher than usual. None of my 2-meter Utah skeds (coordinated on 75 meters) panned out although I did get pings from **W7RQT/7**. It is embarrassing not to work your own section. My only 1296 QSO was with **K6HCP** 100 miles away in SCV, as there isn't any activity here in Sac. V. on this band." — **W6GDO**. "We were portable at Leek Springs Hill at an elevation of 7621 feet, approximately 60 miles east of Sacramento in Eldorado County." — **WB6PXN/6**. "I had hopes of doing better but I had to take time out to take my wife to the hospital. We now have a 9 lb. 4 oz. baby girl. It isn't a contest multiplier but it sure is one around home." — **WB6GFD**.

"We were located at an altitude of 7626 msl." — **W7-DAY/7**. "We were in Washington at a campground near timberline between six and seven thousand feet. Except for a few lapses, 75 meter sideband (around 3810) served excellently as a much-needed liaison for setting up schedules. I'd say it is a necessary part of every mountain-top excursion. In case **W7UDM** didn't send comments along with his log, let me say those guys sure knocked themselves out for very few contacts. They drove 1000 miles round trip for 5 or 6 contacts. They took 144 and 432 KWs along, big antennas and then found hardly anybody to talk to. Kind of discouraging, but DX can be done from there if people will only put out the effort. My experience is that from 8 to 11 a.m. local time is far better than any other time, at least for 2-meter tropo dx. Does this concur with others' experience?" — **K7AUO/7**. "Contest location was on top of 8200 foot Scott Mountain, 50 miles north of Boise, Idaho. Poor tropo conditions prevented two-way contacts with **W6GDO** in SV and **W7JRG** in Montana. First known Idaho-Utah and Portland, Oregon-Idaho contact." — **W7UDM/7**. "We had our usual cold front v.h.f. contest weather. Despite this, I was able to work Idaho for state #9 on 2 meters." — **K7ZIE**.

"As always a lot of fun, but conditions way down from the excellent June contest tropo. Activity in Ohio, Indiana



Highlighting activity from the Central Division was the two-band Wisconsin effort by **WA9JFM**, topping his section and division with 5010 points.

and Michigan took a nosedive Sunday when an Ohio hamfest took the attention of a great many of the two-meter gang. Once again thanks to the mountain toppers, mainly **W8ASA/3**, **W2UFT/8** and **W4TRC** who handed out Md., W. Va. and Va. The ARRL VHF contests are a big boon to VHF interest and activity." — **W8QOH**. "There seemed to be a dearth of activity, particularly on 220/432. We were surprised not to hear New England stations particularly because **K2HLA** on Eastern L. I. had a terrific signal. We heard **W1AZK** but Don apparently didn't have his beams to the SW. Ditto **K1ABR** (these on 144 Mc.) The **VE3** stations had very strong signals on 2 meters. Most of 2 meter operation was via c.w. This group will operate from a fixed location from **W2UFT** in June, provided we can solve the 50 Mc. TVI problem, which is horrendous. This amounts to a mammoth public relations program." — **W2UFT/8**. "None of those 'CQ Contest' operators operating at 145 Mc. took time out to tune down to 144.11 Mc. where easy extra points were waiting for them. At least they could have had the courtesy of specifying where they were tuning and saved some of us a lot of frustration. It was fun anyway (at least after the heat of the contest cooled us down!)." — **W8FAZ**. "Don't wait till tomorrow to work them as they won't be on!" — **W8WEN**. "Missed Indiana, W3 and VE3 for additional sections. Handicapped by an 8-month old Jr. op., but he cooperated exceptionally well. Looking forward to the next one and better two-meter conditions." — **W8HQL**.

"Conditions here in Chicago were extremely bad. Just one week earlier would have been great since there was a very respectable aurora opening covering Colorado to N. Y., but that's just the way the ball bounced. The noise level was much higher than even our normally very high noise level and signals were only better than normal ground wave levels in a narrow band running from Cincinnati to Sturgeon Bay, Wisc., on the two-meter band. We could have added Mo. on 2 and Ohio on 6, however we didn't have s.s.b. available. **K9VKF** is a sightless op. and kept his log in Braille, transcribing it after the test. We both enjoyed the QSO Party and hope to participate again in the future." — **K9JAM**. "Conditions seemed great. Either our added ten feet on the tower helped or those boys to the south know that we are up here in north-central Wisc." — **K9EWG**. "The worst 6 and 2 meter band conditions in five years of contest participation. There was about 5 minutes of 'E' skip on 6 and 2, both south and east. We used to work under the call of **K9PAF**." — **WA9LIV**. "Heard six sections on two, but worked only one. Next time I'll have more than a 'TWOer'." — **WA9NVY**. "Never heard or worked so many on two in any contest. Six was fairly good but not as active as during the June Party as far as states worked." — **WA9JFM**. "Didn't realize v.h.f. contests could be so much fun. Lots I worked felt they had to give a time check as part of every exchange, hi." — **W9GFF**. "One of the operators at **WA0POY** (during a short nap away from the rig) dreamed he was working a VK on 50 Mc.! Activity in greater Kansas City was noticeable by its absence. The Kansas SCM **K0BXF** was good for a contact on six and two." — **WA0FLL/0**. "Six meter conditions were poor even from 13,000 foot on the side of Mt. Evans, Colorado, the highest accessible Mt. peak (by road) in the world! No DX, no groundwave and no activity. Besides all this, we experienced freezing rain, snow, hail and temperatures of 25 degrees. But boy what a view!" — **K8REG/0**.

"I operated portable on a hill about 600 foot above the mean altitude around the Montreal area, some 35 miles west of the city. Conditions were poor to fair. Activity was poor in Quebec but appeared good south of the border. Looking forward to the January VHF SS." — **VE2BZH/2**. "My city QTH is difficult because of many trees. So, the cottage again seemed to be it. Again I got the 32 elements up, but also added the 5-L for 50 Mc., not knowing at the time whether I'd be able to get any worthwhile signal on either band. This year the test was a real challenge because conditions were not at all good. Of my 27 contacts, all but 3 were on c.w. or s.s.b. I've been moni-

toring the f.m. band and think it is a very good indicator of 2-meter conditions. When things look promising, I am able to hear both Montreal and Syracuse area stations. I'm sure that if I could get a few guys interested in turning out about 6 to 7 a.m. EDT we could work all over the eastern seaboard. Next year I think I'll try to get something on for 220 and 432 although I don't want to bite off too much and I already have about a ton of gear at the cottage." — VE3CRA/3.

### Disqualifications

In accordance with V.H.F. QSO Party Rules, the entry of WA9HKP has been found invalid.

### SCORES

In the following tabulation, scores are listed by ARRL Divisions and Sections. Unless otherwise noted, the top scorer in each section receives a certificate award. Columns indicate the final score, the number of contacts, the section multiplier, and the bands used. A represents 50 Mc.; B, 144 Mc.; C, 220 Mc.; D, 432 Mc.; and E, 1296 Mc. or higher. Multiple-operator stations are shown at the end of each section tabulation. An asterisk denotes a Novice Award Winner. A double asterisk denotes a Headquarters staff member, ineligible for an award.

#### ATLANTIC DIVISION

*Delaware*  
W3CGV 1533-64-21-ABCD  
W3HC 846-47-18-AB  
K3UHU 462-42-11-A  
W3BDP 324-26-12-BD  
K3QBD/3 (12 ops)  
1584-132-12-AB

*Eastern Pennsylvania*  
K3WJB 3276-182-18-AB  
WA3AAN 1812-151-12-A  
W3MPX 690-69-10-A  
K3JHE 350-35-10-A  
WN3FFK\* 170-34-5-B  
WN3FDB 140-28-5-B  
WN3FZF 2-2-1-B  
K3MTK/3 (4 ops)  
16,135-461-35-AB  
W3AD/3 (6 ops)  
7983-264-27-AB  
K3ZSG (K3ZSG, WA3s DNC  
FVK)  
7326-220-33-ABC  
W3ARW (K3SQO, W3s ARW  
PMG)  
6273-142-41-ABCD  
K3TYJ/3 (6 ops)  
2412-134-18-AB  
K3YQS/3 (K3s QGQ YQS,  
WA3BCD)  
2329-137-17-AB  
K3YGH (W3s GFN JZG)  
1617-66-21-AB

*Md.-D.C.*  
WA3CBC 2660-140-19-AB  
WA3EOP/3 1012-92-11-AB  
W3GKP 689-53-13-B  
WA3GBK 296-37-8-B  
WN3ELA\* 260-52-5-B  
WN3FYZ 1-1-1-B  
W3PGA/3 (5 ops)  
5808-264-22-AB  
K3SNL/3 (K3s QMD ZSS,  
WA3AKZ)  
2176-136-16-AB  
W8ASA/3 (4 ops)  
1666-98-17-AB

*Southern New Jersey*  
W2EIF 5915-150-35-ABCD  
WN2UVB\* 200-40-5-B  
WB2MNM 155-31-5-A  
WB2RVE 150-25-6-AB  
WB2SPJ 102-17-6-A  
WA2HSP 60-15-4-B  
WB2IGC 32-8-4-B  
WN2UOX 1-1-1-B  
WB2NVG (5 ops)  
4488-203-22-ABC  
WB2UEY/2 (WB2s UEY  
YJL)  
420-70-6-AB

*Western New York*  
K2YCO 3192-95-28-ABCD  
K2LFB 1710-89-19-ABD  
K2DUR 1488-93-16-AB  
WA2TEY 1260-105-12-AB

WB2OEU/2 1064-76-14-AB  
WA2KND 490-68-7-ABD  
WB2PXC 392-56-7-AB  
K2ACQ 150-15-5-D  
WA2YRH 88-21-4-ABD  
WB2KYQ 33-11-3-B  
W2ADN 14-14-1-A  
W2UOX/2 (5 ops)  
8995-257-35-AB  
W2OW (14 ops)  
5249-181-19-AB  
W2OFQ/2 (9 ops)  
3294-183-18-AB  
K2ERQ (11 ops)  
2465-145-17-AB  
WB2SEJ/2 (WB2s HQL SEJ  
VFC)  
424-53-8-B

*Western Pennsylvania*  
W3KWH (W3ZGI, opr.)  
1869-89-21-A  
W3BWU 1196-90-13-ABC  
W3RUE 1121-53-19-ABD  
WN3FUF 188-47-4-B  
W3DJM 140-35-4-A  
K3TTP 45-9-5-AB  
K3HKK/3 (10 ops)  
14,280-313-40-ABCD

#### CENTRAL DIVISION

*Illinois*  
WA9OUU 2310-165-14-AB  
K9RVG 1557-173-9-B  
W9VWY 812-116-7-B  
WN9RNQ\* 530-106-5-B  
WA9MSZ 280-70-4-B  
WA9OBQ 268-67-4-B  
WN9RSN\* 268-67-4-B  
W9GFF 236-59-4-B  
WA9FXH 204-51-4-B  
WA9SKJ 196-49-4-A  
WA9NVG 184-46-4-B  
W9AXT 174-27-6-BD  
WA9CUK 170-34-5-A  
WA9RIF 165-55-3-B  
WA9FIH 112-28-4-AB  
W9VPU 102-14-6-BD  
W9DI 4-4-1-A  
WA9LIV (11 ops)  
3512-203-16-ABCD  
K9JAM (K9VIF, W9LPO)  
2574-234-11-AB

*Indiana*  
K9QCB 1344-109-12-ABCD  
K9MMH 1092-78-14-AB  
WA9NLA/9 664-83-8-AB  
WA9NJJ 210-30-7-A  
W9BRN (W9BRN, K9MRI)  
1760-160-11-B

*Wisconsin*  
WA9JFM 5010-334-15-AB  
WA9OFF 657-73-9-AB  
K9VNM 456-76-6-B  
K8IFL/9 168-42-4-B  
W9TQ 144-36-4-B  
WA9MCC 42-21-2-B  
WA9NRY 7-1-1-B  
K9OXY/9 (K9OXY,  
W9GJJ, WA9LZM)  
1430-126-11-ABE

K9EWG (5 ops)  
146-81-6-B  
WA9RNW (5 ops)  
330-55-6-A

#### DAKOTA DIVISION

*Minnesota*  
W0LCN 154-22-7-B

#### DELTA DIVISION

*Louisiana*  
WA5DXA 176-44-4-AB  
WA5OZH 102-34-3-A  
WA5KBH 52-26-2-AB  
WA5DRK 24-24-1-A  
WA5JVL 7-7-1-A

*Mississippi*  
W5CKY 126-16-7-BD  
W5CUU (W4WZC, W5CUU,  
WA5NLO)  
15-5-3-AB

*Tennessee*  
K4FJW/4 80-16-5-A  
WA4VNP/4 (5 ops)  
940-94-10-AB  
WA4UCE (WA4CKP,  
WB4CDE)  
45-15-3-A

#### GREAT LAKES DIVISION

##### Michigan

W8CVQ 630-61-10-ABD  
W8HQL 280-70-4-B  
W8HPZ 116-29-4-AB  
W8IBB 80-16-5-B  
W8SQK (K8UCQ, W8MOA)  
105-21-5-A

##### Ohio

WA8MPW 2220-222-10-AB  
W8QOH 1391-107-13-B  
W8WEN 1302-93-14-B  
W8LRO 1274-91-14-AB  
W8JRN 777-111-7-AB  
WN8SJJ\* 156-52-3-B  
WN8SOW 57-19-3-B  
WN8UPC 34-17-2-B  
W8FAZ 12-4-2-BD  
WA8BCA (14 ops)  
8088-337-24-AB  
WA8MSF (WA8s MRW  
MSF SVV)  
2340-156-15-AB

Minimum Number of Sections	(Calls in bold-face type denote single- operator section leaders.)					Minimum Number of Sections	(Calls in bold-face type denote single- operator section leaders.)				
	15	10	2	2	1		15	10	2	2	1
Band (Mc.)	50	144	220	432	1296	Band (Mc.)	50	144	220	432	1296
K1ABR	14					W2WEB/2*	15				
W1ALE			3			WN2WVA	10				
W1CB/J1*				3		W3AD/3*	15				
W1DHT*	10					W3ARW*	18	6	4		
W1DRO/1	11					W3BDP	11				
K1FFE	11		4			WA3CBC	10				
W1JSM	12					W3CGV		2	4		
W1LUA/1*	16	13	5			W3GKP	13				
W1NBN/1*	10	2	4			W3HC	13				
W1OOP			5	6		K3HKK/3*	17	18	2	3	
K1QIZ/1*	10					W3KWH	21				
K1TPK	10					K3MTK/3*	18	17			
K1TZD			2		1	W3PGA/3*	12				
K1UGQ/1*	18	20	10	11	2	W3RUE	11			4	
K1WHS	19	15	7			K3ZSG*	15	16	2		
K1YON			10		1	WA4LTS	18			2	
K1YLU/1*	15	16	6	3		K4SUM			2	5	
K2ACQ				5		W4TRC/4*	15				
W2AQT	14					W5CKY			2		
W2AQV	20					W6GDO			3	6	1
K2ARO	10					W6GFD			4	3	2
WA2BNK	10					K6HMS				4	
K2CBA/2			2	6		W6KAP			3	5	1
K2DNR	17					K6KLY				4	
W2EIF	13	4	4			W6NLO			4		
K2ERQ*	15					W6PUZ				4	
WA2EUS			2			WA8BCA*	12				
W2GKR/2	16	4				W8CVQ				2	
W2GKZ	10					W8QOH	13				
W2HF	11					W8WEN	14				
W2LWI	21					W9AXT				2	
WB2OJJ*	11					W9BRN*	11				
W2OW*	17					W9LIV*			2		
W2PEZ/1*	16	16	7	4	1	K9OXY/9*					1
W2PMP	15					VE2BZH/2	10				
WB2QLP*	11					VE3AIB				3	
WB2QZZ	18					VE3BPR				7	
WB2RWB/2*	12		2	1		VE3DBE				3	
WB2TEO*	12					VE3ZZZ*	14	4	2		
W2UFT/8*	19	2									
W2UOX/2*	19	16									

\* Multi-operator Station.

## HUDSON DIVISION

### Eastern New York

K2CBA/2 (W2JKI, opr.)  
 W2AQV 1500- 75-20-B  
 W2LWI 1365- 65-21-B  
 K2DNR 1156- 68-17-B  
 K2ARO 704- 63-11-BD  
 WB2TNM 318- 53- 6-A  
 W2HFF 252- 10-12-BC  
 W2IP 224- 28- 8-B  
 WB2VQV 192- 32- 6-A  
 WA2USG 174- 29- 6-B  
 WA2DAH/2 27- 9- 3-A  
 WA2MMI (WA2MMI,  
 WB2UHZ) 1568-112-14-AB  
 WB2OJJ (WB2s MYK OJJ)  
 605- 55-11-B  
 WB2JYV 4 oprs.)  
 459- 51- 9-AB  
 WA2UIY (4 oprs.)  
 350- 35-10-AB  
 WN2WUS (4 oprs.)  
 250- 50- 5-B

### N.Y.C.-L.I.

WB2PMP 6960-240-29-AB  
 WB2QAF 1350- 90-15-AB  
 WN2WVA\* 1180-118-10-B  
 WA2EUS 810- 52-15-ABD  
 WB2UKQ 560- 70- 8-AB  
 WN2WVU 44- 69- 7-B  
 WB2JTE 420- 60- 7-AB  
 W2GKZ 360- 36-10-B  
 WB2HME 330- 55- 6-A  
 WN2VGR 240- 40- 6-B  
 WN2UZU 172- 43- 4-B  
 K2EVE 168- 26- 6-A  
 W2KXG 145- 29- 5-B  
 WB2MEO 140- 35- 4-B  
 WB2TEO (WB2s EDF TEO  
 TFJ) 7098-273-26-AB  
 WB2QLP (WB2s MZE QLP)  
 6720-280-24-AB

### Northern New Jersey

WB2QZZ 2736-152-18-B  
 WA2BNK 1080-108-10-B  
 W2CVV 600- 50-12-AB  
 W2AQT 434- 31-14-B  
 WB2OYK 48- 12- 4-A  
 WN2YRD 40- 20- 2-B  
 W2GKR/2 (6 oprs.)  
 15,470-432-35-ABCD  
 WB2RWB/2 (6 oprs.)  
 12,818-360-34-ABCDE  
 WA2WEB/2 (9 oprs.)  
 4830-160-30-ABC  
 WB2MZH (WB2 MZH  
 NCX) 1392-116-12-AB

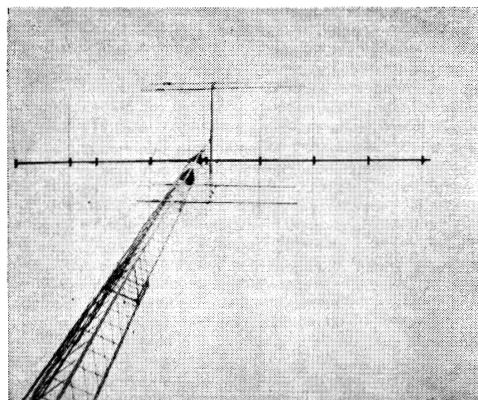
## MIDWEST DIVISION

### Iowa

K0KPK 354- 59- 6-A

### Kansas

W0FII 168- 28- 6-AB  
 WA0FLL/0 100- 25- 4-AB



The top New England Division and Connecticut single-operator score was posted by **K1WHS**. Dave's v.h.f. antenna array consists of a Tri-ex crank-up tower supporting 9 elements on a 31-ft. boom for 50 Mc., a 32-element Telrex Quad array for 144 Mc. and a temporary 6-element 220 Mc. Yagi. The top two meter antennas are 93 feet off the ground.

W0LB/0 (7 oprs.) 1290-129-10-AB  
 WA0POY (4 oprs.) 945-105- 9-AB  
 Missouri  
 K0TLM 432- 54- 8-AB

## NEW ENGLAND DIVISION

### Connecticut

K1WHS 13,448-316-41-ABC  
 K1YON 3286- 86-31-ABCE  
 WA1EAZ 2190-146-15-AB  
 KITZD 1728-101-16-ABCE  
 WA1EQC 352- 44- 8-B  
 W1AW (W1WPR, opr.)\*\*  
 256- 32- 8-AB  
 W1QJL 130- 26- 5-AB  
 WA1GS 105- 21- 5-B  
 K1QPN 60- 20- 3-B  
 WA1FLC 33- 11- 3-B  
 W1GRK 24- 8- 3-A  
 W1LUA/1 (9 oprs.)  
 12,070-349-34-ABC  
 W1DHT (5 oprs.)  
 2415-115-21-AB  
 K1KKK/1 (K1s KKK SUB.  
 W1DWE)510- 85- 6-A  
 Eastern Massachusetts  
 W1DRO/1 3780-210-18-AB

K1FFE 1110- 65-15-BD  
 W1DOM 1044-116- 9-AB  
 WA1BFD 990- 90-11-A  
 W1HIL 793- 61-13-AB  
 W1JSM 780- 65-12-B  
 W1KBN (K1OPW, opr.)  
 690- 69-10-AB  
 W1OOP 594- 27-11-CD  
 WA1FBQ 368- 46- 8-AB  
 WA1AEZ 357- 51- 7-A  
 WA1FCD 288- 36- 8-AB  
 K1BUP 125- 25- 5-A  
 W1DPPX 110- 22- 5-A  
 W1CTR/1 104- 26- 4-B  
 WA1EJE 84- 21- 4-B  
 K1OJQ 68- 17- 4-A  
 W1DYU 42- 14- 3-A  
 W1CTR 36- 12- 3-A  
 W1CB/1 (K1s AYZ ZTA,  
 W1DICI)  
 2975-166-17-ABD  
 WA1ACD (WA1s ACD FGZ  
 BIQ) 1716-156-11-AB  
 Maine  
 K1MTJ 372- 31-12-AB  
 New Hampshire  
 W1ALE 1826- 72-22-ABCD  
 WA1CR 132- 22- 6-B  
 W2PEZ/1 (8 oprs.)  
 37,048-809-44-ABCDE  
 Rhode Island  
 K1TPK 5676-258-22-AB  
 K1ABR 1743- 83-21-AB

## Vermont

W1HDQ/1\*\* 170- 17-10-AB  
 W1EXZ 32- 8- 4-AB  
 W1QQ 2- 2- 1-B  
 WA2ZPD/1 1- 1- 1-B  
 K1QIZ/1 (4 oprs.)  
 2457-117-21-AB  
 W1IPJ/1 (4 oprs.)  
 1980-110-18-AB  
 W1ARE (W1s ARE DAO)  
 330- 30-11-AB  
 Western Massachusetts  
 K1ULZ 1032- 86-12-AB  
 W1UWX 754- 58-13-AB  
 W1UCB 216- 23- 9-ABC  
 K1UGQ/1 (12 oprs.)  
 48,190-742-61-ABCDE  
 K1YLU/1 (8 oprs.)  
 23,880-571-40-ABCD  
 W1NBN/1 (5 oprs.)  
 5510-177-29-ABCD

## NORTHWESTERN DIVISION

### Idaho

W7UDM/7 (W7s DPE SMV UDM)  
 20- 5- 4-B  
 W7LIQ (4 oprs.)  
 16- 8- 2-B

### Montana

W7CJN 22- 11- 2-AB  
 W7TQC 20- 10- 2-AB  
 W7TYN/7 10- 10- 1-B

### Oregon

WA7BJU/7 396- 63- 6-ABCD  
 W7TYR 330- 50- 6-ABCD  
 K7ZIR 234- 37- 6-ABCD

### Washington

K7BBO 1089-121- 9-AB  
 WA7FHG 182- 61- 3-AB  
 W7GZN/7 36- 18- 4-A  
 K7DBR/7 (K7s DBR IVC)  
 300-100- 3-AB  
 K7AUO/7 (4 oprs.)  
 96- 32- 3-B  
 WA7BTG (WA7BTG,  
 WN7CVZ)  
 58- 29- 2-AB

## PACIFIC DIVISION

### East Bay

K6KLY 88- 11- 4-D  
 WB6FHH 12- 4- 3-B  
 WB6LFJ 6- 3- 2-B

### Nevada

K7ICW 216- 17-12-ABD

### Sacramento Valley

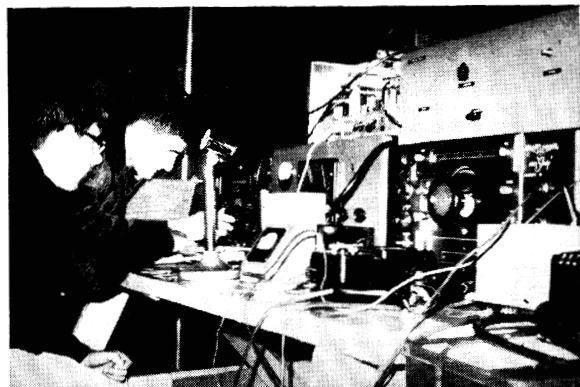
W6GDO 4158-136-27-ABCDE  
 WN6TOA 44- 22- 2-B  
 WA6CXB 22- 11- 2-B  
 WA6JDT 4- 4- 1-B  
 WB6FXN/6 (WB6KVB,  
 WB6FXN, K7BCD)  
 630- 70- 9-AB

### San Joaquin Valley

K6UJG 248- 31- 8-AB

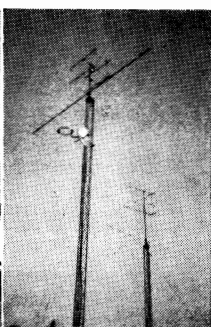
(Continued on page 148)

The top score in the contest was amassed through the multioperator-efforts of **K1UGQ/1**, with close to 50-K for a 5-band performance. Antennas for the Mt. Greylock (W. Mass.) operation were 3/3 yagis for 50 Mc., 8/8/8 J-beams for 144 Mc., 15-L yagi for 220 Mc., 24-L colinear for 432 Mc. and an 8 ft. dish for 1215. On the left, 220 Mc. operator WB2RDF seems to be saying to K1KSG "It's a WA6 alright, but he's portable 2!"



# September V.H.F. QSO Party Results

(Continued from page 66)



**K7ICW** is an outstanding "regular" from Nevada who really has to work for the few contacts shown on his log. He is in there trying every time with an excellent setup, running 600 watts on six and two, 25 watts on 432 and an interesting antenna farm, 8-L on 6, 20-L on 2 and 44-L on 432 Mc. Nice going All

## Santa Clara Valley

WB6KAP 2318-106-19-ABCDE  
WB6KBZ/6 1650-165-10-AB

## ROANOKE DIVISION

### North Carolina

WA4BVW/4 1717-101-17-AB  
WA4UJI 246- 41- 6-AB  
W4HJZ 162- 27- 6-AB  
W4FDO/4 (W4FDO,  
WA4BBY) 2250-150-15-AB

### South Carolina

WA4LTS 5292-189-27-ABD

### Virginia

K4SUM 2556-127-18-ABCD  
W4TRC/4 (7 oprs.) 5040-207-24-ABD

### West Virginia

K8WVP 150- 15-10-AB  
W2UFT/8 (4 oprs.) 2750-121-22-BCD

## ROCKY MOUNTAIN DIVISION

### Colorado

W0AJY 108- 54- 2-AB  
WA0HFS 44- 22- 2-AB  
K8REG/0 (W4SEX,  
K8REG) 29- 29- 1-A

### New Mexico

W5IXR/5 20- 10- 2-AB

## SOUTHEASTERN DIVISION

### Alabama

K4ABT 488- 61- 8-A  
K4WHW 408- 68- 6-AB  
K4BEI/4 392- 56- 7-A  
K4UEC 180- 36- 5-AB  
WA4DBQ 114- 38- 3-A  
WB4ALN 26- 13- 2-A

### Georgia

K4HQI 162- 27- 6-A  
K4YZE 6- 6- 1-B

## SOUTHWESTERN DIVISION

### Arizona

W7DAY/7 (5 oprs.) 60- 20- 3-AB

## Los Angeles

WB6GFD 1470- 76-15-ABCDE  
W6PUZ 1243- 96-11-ABD  
WA6FJJ/6 120- 24- 5-AB  
W6QCV 112- 28- 4-A  
WN6SJI 28- 28- 1-B

## Orange

K6HMS 488- 50- 8-BD  
WB6PHO 27- 9- 3-AB

## San Diego

WA6ZQU 245- 49- 5-AB  
WB6BIH 150- 30- 5-AB  
WB6JLC 120- 30- 4-B  
WB6MEI 30- 10- 3-A  
W6NLO/6 (W6s BLL  
NLO) 1560-119-12-ABC

## WEST GULF DIVISION

### Northern Texas

K5IVB 134- 67- 22-A  
WA5LPA 84- 42- 2-A  
WA5HWI 56- 14- 4-AB  
WA5LUM 53- 53- 1-A

### Oklahoma

W5WAX 624- 52-12-AB  
W5LOW 38- 19- 2-AB  
K5CBA 32- 16- 2-AB  
K5CFM (K5CFM,  
WA5JRH) 1188- 99-12-AB

### Southern Texas

WA5AUA 305- 61- 5-AB

## CANADIAN DIVISION

### Quebec

VE2BZH/2 1260- 90-14-AB  
VE2BMQ 260- 25-10-ABD

### Ontario

VE3BGA 804- 67-12-AB  
VE3AIB 480- 40-10-ABCD  
VE3BPR 320- 18-10-BD  
VE3BSM 290- 58- 5-B  
VE3CRA/3 189- 27- 7-AB  
VE3DSE 185- 26- 5-BD  
VE3GAF 172- 43- 4-AB  
VE3DNR 140- 35- 4-B  
VE3EVW 108- 16- 6-BD  
VE3CIT 64- 16- 4-AB  
VE3CIV 58- 29- 2-A  
VE3ZZZ (VE3s AGB BQN)  
3888-133-27-ABCD  
VE3SAU (10 oprs.)  
1938-114-17-AB  
VE3VM/3 (VE3s CBG DVE  
GEJ 484- 121- 4-B

QST