

NAME	OPER	OPERANDS	AND COMMENT	IDENT	SEQ
<b>1966 SWEEPSTAKES</b>					
<b>Complete Results 33rd SS</b>					
<b>Phone C.W. Club</b>					

A look at the future, perhaps, with the aid of **W1DYE/1** who filed his logs with the help of the 1620 computer. On the small computer Den figures it took about 1/2 hour to do the work (AFTER the cards were punched) and using a big System 360 an estimate of about 3 minutes. A major catch here is that the time needed to punch the cards for everyone's entries would require the entire Hq. crew to work on the SS!

**COMPILED BY ELLEN WHITE,\* W1YYM**

**I**n a nutshell the 33rd ARRL Sweepstakes was indeed a great one — the year for a terrific phone showing and extra effort by the west coast. Going to press for March QST, the earliest this author can recall making this compilation, we can report that the 1966 Sweepstakes of November 12-14, 19-21, was no record breaker in terms of gross numbers (with close to 1900 reports received) but did show an ever-increasing proportion of phone interest. Just five years ago the general proportion of c.w. to phone averaged out to about 3 to 1, this year the ratio became much closer, about 5 to 4!

Let's take a look at the top ten c.w.: *single operator* **W6CUF 150,468**, **WA6SBO** (W1YNP/W6EGP, opr.) 142,201, **W6RW** (K9ELT, opr.) 139,469, **W9IOP 134,325**, **W4KFC 133,469**, **W3BES 133,368**, **W8UM** (W8CQN, opr.) 132,813, **W1BGD 130,188**, **W2VJN 127,656**, **W9YT** (K9ZMS, opr.) 124,858; *multioperator* **K5LZO 157,800**, **K2ZWI 117,600**, **WA3EPT 97,900**, **WA0DKA 84,310**, **W0YC 81,428**, **WA2HSP 81,295**, **W0EEE 79,242**, **W9HHX 70,290**, **WA9LUD 69,530**, **W2SZ 67,620**.

Top ten phone: *single operator* **W7ESK 202,050**, **K5LZO 180,113**, **W2RLM 166,780**, **K8DOC** (K8TAH, opr.) 165,165, **W3GRF** (K1ANV, opr.) 164,141, **K3JJG/3 158,118**, **W3BES 155,224**, **W7DK** (W7BSW, opr.)

152,425, **WA5HID 146,880**, **W8UM** (W8FAW, opr.) 146,197; *multioperator* **WA0CHH 138,937**, **WA8GUF 120,225**, **W0HSC 104,142**, **W0EEE 100,764**, **WA7BKW 90,894**, **K6BPC 88,760**, **W2SZ 87,016**, **WA6URY 85,697**, **W9HHX 85,555**, **K4WJV/4 85,145**.

Now for a closer look at the stations in the top three of each of the above groups: **W6CUF**, top single operator c.w. used a **KWM-2** and **75S-1** with a half-wave dipole on 80, 2 elements on 40 and a **TH-6** for 20-15-10. Jim was licensed back in 1948 and is an old pro at winning SCV awards. Second place c.w., **WA6SBO** keyed by **W1YNP**, is what Bob calls a "classic station" one thousand feet above the city of San Diego with dipoles on 80, 2 elements on 40, 5 elements on 20 and 5 on 15 with a mean height of 75 feet. The station equipment included an **HT-32B** and **75A-A**. Third place c.w. **W6RW**, manned by **K9ELT**, is another big antenna set-up with 5 elements apiece on 15 and 20, 3 elements on 40 and a zepp on 80. Phil reports that the station lineup at **W6RW** included a **310-B**, **4-250A**, **75A-4** and **R4-A**. Multioperator c.w. leader **K5LZO**, aided by **WA5LES**, topped the 1000-QSO figure in a terrific 5-band operation. Chuck reports they ran high power, made the clean sweep, and even forwarded a photo! Radiators include an **Inverted Vee** for 80, 2-elements on 40,

\* Deputy Communications Mgr., ARRL.



**KH6IJ**, active in both sections for over 900 exchanges, is among the most sought-after multipliers in any contest. Nose's new QTH, just behind Diamond Head, houses a **32S-3/4-1000A**, **75S-3B**. The antenna in use for the SS test was a **Tri-band Yagi**.

**QST for**

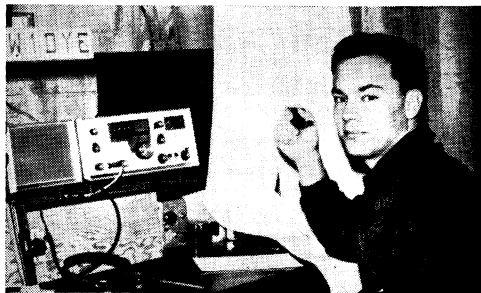
a 3-element beam plus a 2 element beam on both 20 and 15 and a 4-element plus a 2-element beam on 10; antenna heights between 35 and 70 feet. They found participation excellent and conditions very favorable particularly for 15. Vermont proved to be their toughest section. The station gear included the following: 75S3-B, 2-B, 32S-1, CE-100V, p.p. 4-400A and 4-811A. Second high multiplier c.w., K2ZWI of W. N. Y., posted 117,000 points through the efforts of K1USD and K21MK and an SB-400, R4-A, trap dipole and 3-element tribander. Third c.w. high multiplier, the WA3EPT crew of the Hopkins Amateur Radio Club, looks for 100-K *this* year, or bust. The group ran high power, HX50-A, Ranger-4-250As and used a pair of HQ-129Xs and an SX-101A. Dipoles were used on 80 and 40. Additionally, 40 saw service from a vertical *plus* a 3-element optimum spaced beam while a quad turned the trick on 20 and 15.

Looking at the phone leaders we find that the top SS tally by anyone was submitted by Rush Drake, W7ESK, topping 200-K with over 900 phone two-ways and a clean sweep of the sections. The gear: a 32S-3/75S-3 — the antennas present an eye-popping rundown; 10 meters, 4 stacked 3 elements (top at 110 ft.); 15 meters, 2 stacked 3 elements (top 115 ft.); 20 meters, 2 stacked 3 elements (top 120 ft.); 40 meters, 2 elements at 105 ft. and 80 meters, a dipole at 110 feet! Second high solo phone, K5LZO also topped all c.w. totals, including his own multiplier c.w. sum! With the exception of the amplifiers shown in the preceding paragraphs, all the gear was the same. Chuck feels that ten proved very helpful during the first few hours of the test and that the low power contact rate should increase over the next few years as 10 and 15 play a larger role in the SS. The number three "show" spot on phone includes another score higher than any of the code totals, W2RLM of the N.Y.C.-L.I. section operating from Northport, Long Island for 785 exchanges in 72 sections. The transmitter used as a TR-3 and receiver an RME-6900. Antennas were a Mosley CL-33 up 80 feet, an Inverted Vee for 75 and two half-waves in phase for 40.

The top phone multiplier score, 139-K by the WAØCHH crew (manned by some of the best of the St. Louis Contest Operators), itemized 620 two-ways and a clean sweep. The group used a TR-3 on 80 and 40, a TR-3 on 20 and a Galaxy 5 on 80, 40, 15 and 10; none operated simultaneously in case you're confused! Radiators were dipoles plus 4 elements on 20 and 3 elements on 15 and 10. WA8GUF of Michigan posted number 2 spot in the phone multiplier grouping with 120-K, 575 exchanges and 70 sections. WA8s GUF HHO and RGT manned the station which included an HT-37, T4-X, R-4, 3-element beam and assorted dipoles. At the time of this writing no equipment breakdown was available from third-spot multiplier phone WØHSC.



This makes 6 in a row for reliable **VE6MA**, activity in both modes and top Alberta c.w. score.



**W1DYE/1**, top phone and c.w. in N. H., against a backdrop of computerized SS logs.



**K4GSU/3** found the going tough in Maryland and looks forward to a return to Kentucky! Bill's winning 118-K c.w. effort led a difficult section. Gear shown includes an HT-46, homebrew pair of 6146A's, Handbook Keyer, T-O Keyer v.f.o. and 75S3-B.



It took three years doing but here's a picture of **K5LZO** (left) aided by **WASLES** for 158-K during the c.w. SS. Chuck, K5LZO, operated solo during the phone portion for one of the top single-op. tallies, 180-K leading So. Texas and the West Gulf Division.

For the second year in a row, a message credit bonus of 1000 points was offered for a post-SS message origination. The message, a brief resume of test results, was tried by hundreds of participants. Many failed, however, pretty much for the same reasons as the past year—no message precedence, inadequate (or missing) handling data, incorrect word count.

— . . . —

In order to make this unusually early issue of *QST* several of the customary "bits and pieces" just had to be overlooked. In the coming months we hope to have a new face to introduce to you in the field of contest reporting, one who has had more than a small hand in producing these results—WA2BAH/1.

A reminder too, all section and club awards are scheduled for mid-March mailing. Stand by!

### Club Scores

Did *your* club qualify for listing in the club box? If your group is affiliated, submitted a "secretary's letter" and had a minimum of three valid entries then your club name will be shown in the total of 43 clubs to qualifying this year, up nicely over last year (when only 33 so qualified). On the negative side, approximately 3 dozen clubs failed to make this listing through non-compliance with the rules.

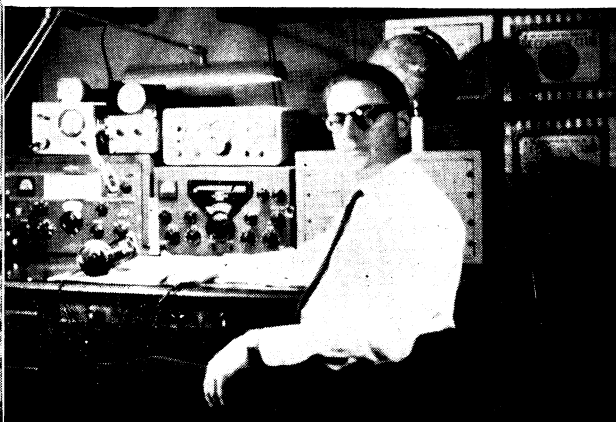
A comparison with the previous SS reveals the same number one and two positions, PVRC and FRC, respectively. Number six last year but number three this year is the Connecticut Wireless Association moved along under the guidance of W1BGD. Brand new to the list and just recently affiliated, the St. Louis Contest

Operators of Missouri presented a fine 841-K aggregate for number four position. Other significant position changes this year: the SJRA up from 8 to 5; the Germantown RC up from 9 to 7; the Indian Hills RC (which did not appear last year) showing up as 8 this year; ditto the University of Rhode Island RC shepherded along by K1LPL for the 9th spot.

The SJRA reports that a brief but extensive campaign to bolster activity seemed to have been quite successful with a score increase over the previous year, with but a few more entries. Their theme has been, and will continue to be, "the fun of amateur radio." Their entry by WA2HSP proved to be the most accurately done of all the bigger groups. The Miami Valley AR Contest Society reported that the annual "November madness" kept them on their toes while awaiting the Field Day in June and the opportunity to again challenge one and all for their undisputed title as kings of the 2-A Class. The Germantown Radio Club reports their club's main concern is the development of excellence in the technical and operational aspects of communications. They feel that contests such as the SS provide them an excellent opportunity to develop the latter. Their fine report by K3DVS, pays tribute to their club trustee W3LUW who conceived the organization several year ago. The group feels that his untiring efforts and most generous financial help have made the club what it is today. For his help to hundreds over the years the group names Don their "ham" of the year. The Chesapeake ARC finds the SS the proving grounds for operator improvement and advancement of proficiency. This year,



Numerous E.N.Y. phone logs were prefaced by comments similar to—"Who is **W2BIU?**" It suffices to say this is old contest pro **WØEDX** putting to good use a 32S-3 and a modified 75A-4 and 75A-1. Al used a wide-spaced tri-band quad up 75 feet and a 50-ft. high dipole for 40 and 80. His final result topped 130-K. He reports having a lot of fun with a slightly depressing sidelight, having one of the earlier license dates.



CWA tried a little different approach to the SS. Quotas were assigned to each member as his expected contribution to the club aggregate. The group was motivated by their desire to keep up their first string record in contests, number 1 spot in the SS (after PVRC and FRC, hi!), the record breaking PJ5ME 1966 DX score up through the 1967 FD where they hope to regain command of the 2-A standings.

The following list, a popular comparison the past few years, shows a breakdown of the top ten clubs by mode.

C.W.	Position	PHONE
Potomac Valley RC	1	Potomac Valley RC
Frankford RC	2	Frankford RC
Conn. Wireless Assn.	3	St. Louis
South Jersey	4	Miami Valley
Indian Hills	5	Germantown RC
Univ. of R. I.	6	Conn. Wireless Assn.
St. Louis	7	South Jersey
Wisconsin Valley	8	Indian Hills
Miami Valley	9	Univ. of R. I.
Germantown RC	10	Wisconsin Valley

### CLUB SCORES

Club	Score	Valid Entries	C. W. Winner	Phone Winner
Potomac Valley Radio Club	3,491,545	69	W4KFC	W3GRF <sup>1</sup>
Frankford Radio Club	2,297,833	53	W3BES	K3JG/3
Connecticut Wireless Assn.	940,852	22	W1BGD	W1BGD
St. Louis Contest Operators (Mo.)	841,129	25	W0TJR	K0LGG
South Jersey Radio Assn.	703,708	34	W82FN	W82FA
Miami Valley Amateur Radio Contest Society (Ohio)	605,951	17	W8ZJM	W8MCR
Germantown Radio Club (Pa.)	572,424	19	WA3DCM	W83CQW/3
Indian Hills Radio Club (Ohio)	561,576	20	W8AEB	W8AEB
University of Rhode Island Radio Club	475,305	7	K1LPL	K1LPL
Wisconsin Valley Radio Assn.	423,734	15	W9RQM	W9RQM
West Park Radios (Ohio)	410,974	31	W8EJA	W8KTI
Suffolk County Radio Club (N. Y.)	384,105	22	K2ZYR	W8QEB
Communications Club of New Rochelle (N. Y.)	381,605	7	K2AJA	
Rochester Amateur Radio Assn.	376,607	23	W2GB	WB2RCB
Niagara Frontier DX Assn. (N. Y.)	359,660	8	WB2VON	WA2BEX
Nittany Amateur Radio Club (Pa.)	351,116	17	K3KMO	K3KMO
Lincoln Amateur Radio Club (Nebr.)	333,771	5		W8MOB
Red Bud Amateur Radio Club (Mich.)	325,736	4	W9IOP	
Central Michigan Amateur Radio Club	318,083	9	W8VPC	W8VPC
Buckeye Shortwave Radio Assn. (Ohio)	272,573	13	W8OYI	W8VQI
North Dakota State University Amateur Radio Society	255,493	4		
Westside Amateur Radio Club (La.)	239,430	7	W5BUK	
Order of Boiled Owls of Ohio	208,481	4	W8ETU	
Huntsville Amateur Radio Club (Ala.)	201,696	5		W8USM
Arrowhead Radio Amateurs (Minn.)	172,525	4		
Argonne Amateur Radio Club (Ill.)	145,332	5	W9RCJ	
Boeing Employees Amateur Radio Society (Wash.)	131,015	12	W7WMY	W7WMY
West Allis Radio Amateur Club (Wis.)	129,261	5	WA9GAK	
Atlanta Society of Teenage Radio Operators (Ga.)	115,705	5		W8AXX/2
Columbia University Amateur Radio Club	112,384	5		W8CZH
Motor City Radio Club (Mich.)	103,695	8	W80FJ	
Tri-County Radio Assn. (N. J.)	100,279	7	WA2ASM	
Louisville's Active Radio Operators (Ky.)	99,099	6	W4CVI	W4CVI
Drexel Electronics Society (Pa.)	97,524	6	K3PLJ	K8HYT
North Penn Amateur Radio Club	88,126	6		W8EWE
Walton Radio Assn. (N. Y.)	85,013	7	W2TFL	
Radio Amateurs of Greater Syracuse (N. Y.)	83,279	7	K2KTK	WA2QKT
Chesapeake Amateur Radio Club (Md.)	76,257	8	W3CBP	K3KEE
Penn Wireless Assn.	75,232	5	K3HNP	
1200 Radio Club (Mass.)	64,301	4		K1KNI
Morton West High School Amateur Radio Club (Ill.)	27,406	4		W8KWP
Lake Success Radio Club (N. Y.)	5,273	3		
Blackhawk Amateur Radio Club (Wis.)	1,294	6	WA9MJG	WA9MJG

<sup>1</sup> K1ANV. opr.

MIDWAY BETWEEN POTOMAC VALLEY AND FRANKFORD TERRITORIES IS MURDER -- W3DPR "



**W9YT** (keyed by **K9ZMS**) topped Wisconsin c.w. fans with close to 125-K. Glenn, who is also club prexy for the Badger AR Soc. (**W9YT**), hopes other college clubs will note their modest station. **K9ZMS** recalls **K9ELT** telling him 3 or 4 years ago that beating **W9RQM** in an SS would be a momentous occasion and Glenn claims all his on-the-air time has been devoted to improving his contest skills, ham friendships in rare sections etc. Fortunately he feels it paid off before he had a chance to flunk out of the Univ. of Wis.!

### C.W. SOAPBOX

"Certainly a great c.w. contest. Glad to pass out a few WVs." — **WASPOS**. "Is there a prize for making the least amount of contacts?" — **WA4NUO**. "Fun, fun, fun." — **WN9SRA**. "I would like to see this year's CHECK and DATE used in all future events, very useful information." — **W3QCB**. "Didn't work a soul that I worked in 1930 and, somehow, I didn't expect to. It was a very fine contest with many, many competitors, and well spread out over the bands." — **WIADW**. "And some people seem to think this monkey business is fun." — **WA9UFI/4**. "Next year a keyer and a new receiver are in the works." — **WIDAL**. "The last station I worked, **WA9ITB**, took time out to warn me of my rough note even though the band was very active and he was in the contest. I stopped operating right then, but the League's Official Observers are so alert that two of them heard me and sent me notices. My hat is off to the OOs who spend their time helping us and to 1st-class operators like **WA9ITB** who take time out in a hot contest to warn of trouble." — **W8MKM**. "I remember that when I won the SS for S.F. in 1932 we had to send and receive a ten-word message. That would be something nowadays." — **W8JQP**. "I was pretty worried about this c.w. contest. My horoscope for Saturday warned me about entering anything big, saying it might be disastrous." — **W8MAM**.

"SPRAINED THUMB, THEN LARYNGITIS -- THE BEST PAIR OF EXCUSES A CLUB MEMBER EVER HAD."



"The gory statistics are as follows: I lived it up for 18 hours and 47 minutes, caused 356 other fellows to make log entries and ranged this contempt into 60 sections, failed to enter in my log a single one I heard and didn't work out of sheer cussedness." — **W3DVO**. "The c.w. section, more than the phone, brings out the OTs. It is nice to QSO the same old gang each year." — **W8ZJM**. "I like those beautiful log forms, don't ever change them." — **WA9JIS**. "Why not double points if you work someone with the same birthday, hi!" — **WN1GGN**. "I learned the value of Op. Aid #6 the hard way. After making 20 dupes in 300 QSOs I hereby request a lifetime supply." — **W9GJJ**, *opr.* **W9NGV**. "Some would say it just isn't possible to work all sections but VE1, but I did it." — **WA2OJD**. "Suggest a simulated precedence of M for married or S for single. It'll add additional flavor as well as getting the precedence to be used." — **W4ILE**. "As an old timer it was fun to try the SS again. It reminded



me of the old days at **W1AO** in Mass. and N. H. Really hope to go at the contests in earnest next year." — **K4EN**. "A few people said 'why aren't you in Vt.?' I wish I had been!" — **K1YRB/2**. "Try taping your check sheets and a section list to the operating table to avoid losing them, and put your log sheets on a clip board for convenience in moving around during the test." — **K1THQ**. "After missing the last 4, I find the SS is better than ever, the best contest going." — **K9HCK**. "Even if one doesn't do too well, the SS is the most delightful aspect of ham radio." — **W0YRN**. "Very courteous and efficient operators with few repeats." — **K3EGE**. "Sixty of my 200 contacts were with operators licensed 25 years or more. Is the SS popular? You bet! My hat is off to the new crop, just licensed, who got in there and slugged it out." — **W0RCV**. "After 0300Z the silence was deafening." — **WA0PYJ**. "Everytime I'd get one equipment problem solved, another popped up. Although I was only on for 7 hours I sure learned a lot of lessons while using and repairing my Q-multiplier, monitor, TR switch and receiver." — **W0IBN**. "Why not a multiplier for low-low power rigs under 10 or 15 watts?" — **W0YSE**. "After missing the SS for several years, the short operating time and new format were pleasant surprises." — **K6CYX**. "Courtesy and patience were outstanding this year." — **K9SLK**. "My first SS and next year I plan to spend 2 months prior to the SS copying tube numbers on **W1AW** code practice." — **K7TVS**. "Looks like we need some expeditions to those western sections like W. Mass., W. Va., and W. Fla." — **VE3DDU**. "I'll QSL anyone needing Vernon County, Mo." — **WA0JNF**. "Due to a terrific lack of sleep before and during the SS, many times upon finding a new station I would think 'what am I supposed to do now?'" — **W8MQE**. "I'm sure that the operator of **W8FAW** (**WB2FIT**) could add 100 QSOs if he gave up cigarettes and coffee." — **W8FAW**. "Glad to be back and the first time with time to spare. I just wish I knew the secret of those guys who can make 478 contacts with the contest only 7 hours and 35 minutes old." — **W5BUK**. "Competition is rough in L. A., especially with only a fair location." — **W8EJJ**. "The experience was more than helpful. Tnx." — **K9FZU**. "I wish to place a want ad for a schedule with a KP4 ten minutes prior to the 1967 c.w. SS." — **WA0HYI**. "Got the clean sweep this time, too bad it took both weekends to do it!" — **W4SQE**. "Surprised to work three Maine stations in 25 minutes." — **WA6KHK**. "Some of the times received suggests that some of the guys and gals need to check their sun dials with **WVW** before firing up for the SS, hi!" — **W8APC**. "Our 3-element beam was tuned for the phone portions of the bands, and our c.w. score shows it." — **K6LY**. "Even though I knew Kansas was a bit rare in the SS, I wasn't prepared for the onslaught! I did my darnedest to get Kansas out of the rare N.W.T.-Yuk. category." — **K0BHM**. "After getting 74 sections, it broke my heart not to get nr. 75, KP4, for a clean sweep." — **WA9ITB**. "Big thrill was in working the west coast on 80 in broad daylight." — **K9UIY**. "Your soapbox is the best reading in the SS report." — **W8KCO**. "No prize winner here but I'd never miss an SS. I sure like the earlier starting time compared with a few years ago . . . it gets you off to a flying start while 15 and 20 are still open." — **K9DWG**. "The temperature was 20 degrees and we had to go multioperator so one could keep wood in the fireplace." — **W8KAD**.

## PHONE

"I had a great time in my 1st Phone SS Test. I had to borrow s.s.b. gear this year, but hope to have some of my own by next SS." — *WA3DCM*. "My congratulations to W3BES and K3JJG/3 for their outstanding scores. A beginner observing their techniques can't go wrong." — *K3DVS*. "I operated for 24 hours straight and my math teacher didn't appreciate it when I fell asleep in class the next day." — *WB2VPB* (opr. *W2GLQ/2*). "Amateur radio is the height of 'lunacy'. I drove 385 miles home from college to spend the weekend in the basement working SS . . . but I'd do it all over again. Thanks for another enjoyable contest year." — *K7PGL*. "A homemade weeping-willow antenna for 20 was finished 15 minutes before the start and worked like a dream." — *WA9QFT*. "75 was in excellent condition, poor activity on 10, 40 a mess, and 20 and 15 active with 15 the better of the two for coverage." — *W6AMJ*. "My first SS and quite enjoyable. However, the doggone beam does as good to the rear as to the front." — *K9WKK*. "After my last QSO (with VE6AGV), I got ready to fly my trip (Western Airlines) and five hours later I was in Calgary having a personal visit with VE6AGV to compare comments about the phone SS. Acres of space on 10, with good skip, but where were the contestants? It could have relieved congestion 20." — *W0BWJ*. "Hoping for better 6-meter activity in the January VHF SS!" — *WA8SSQ*. "Hopefully this was the last time I'll have to operate from my college dorm room with antennas slung out the window. I'll graduate Colby in June and it is safe to say that this was my last contest from Maine." — *WINJL/1*. "Operated the phone portion for the first time and found it very stimulating but I'll be more forceful next year." — *K9SLK*. "Had my usual bout with Murphy's Law; transmitter quit, kids knocked mike on floor, plagued with visitors." — *K8ZSZ*. "Our first sideband test and the operating was fun. However, keeping the exciter in business was a full-time job." — *W4SEPT*. "I wanted to see if a monoband station (20 meters) could make a good showing in the SS and I was very disappointed." — *K7STK* (507 two-ways in 67 sections, all on 20 meters — Ed.) "I knew the contest was almost over when W4KFC gave me number 600." — *W1EZZ*. "I'm for using just one phonetic alphabet, the International, there are just too many variations in use. This would make for better transmissions in contests and in traffic work." — *W4ILE*. "Enjoy the SS more than any other contest." — *W8NBN*. "My biggest problem was in making people understand and accept the 55 check for W8UM. People must be made to realize that the check applies to the operator." — *W8FAW*, opr. *W8UM*. "Half of all the SJV hams moved to Missouri and the other half to E. Pa. The Wyoming hams went with them." — *WA4LSA*. "Enjoyed the good competition and didn't hear even one discourteous operator." — *W0PAN/KH6*. "I move this be renamed the 'Sleepstakes,' at least that is what one

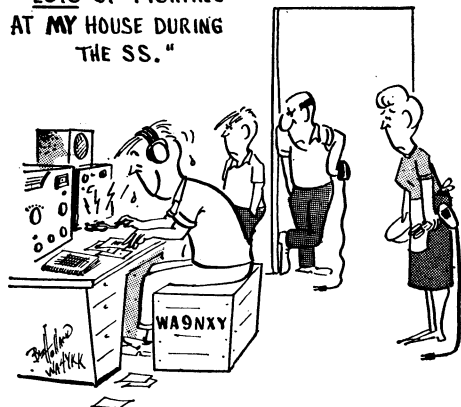
## Novice Certificate Winners

WN1GLS  
WN2YQH  
WN3FLN  
WN5QXD

WN6THT  
WN6UHF  
WN7GFT  
WN8SOV

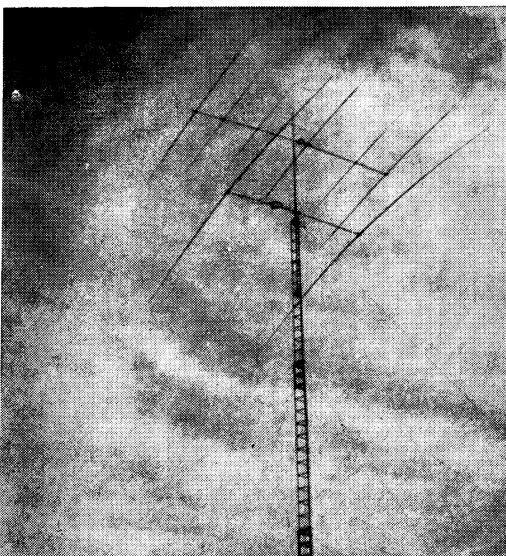
WN8TOB  
WN9SRA  
WN0VW  
WN0PHA

"NO SLOT CARS, NO DRILL, NO MIXER --  
-- LOTS OF FIGHTING  
AT MY HOUSE DURING  
THE SS."



operator seemed to be saying about 0400 CST!" — *K5SGH*. "Ten open, but no contestants — why?" — *K5BVM*. "Operated just on 40 sideband with the beam aimed west, for 325 exchanges in 51 sections." — *W4MPF*. "Early in the contest a YL sent me all the necessary exchange, except the month and day of birth. I asked her twice for the birth date, then finally came the reply 1924. I was guilty, embarrassed, and finally explained but I'm afraid the cat was already out of the bag." — *W9GXR*. "A gallon of cider about midnight cut operating time down." — *WA9PIM*. "Each SS points up faulty equipment. This year has left quite an impression on me. The first thing I am going to do is to repad the seat of my operating chair." — *WA0KDJ*. "Didn't really plan to compete, but the demand for New Mexico was really something. Sure different from my WB2LRU (New Jersey) or my Virginia (WB4CNB) locations!" — *WA5QJQ*. "First time in 25 years that I turned in a higher phone SS score. Baby sitting with grandchildren on the c.w. weekend explains that. The new logs are f.b. and good signals and operating made this an outstanding SS." — *W9LNQ*.

It was clearly victory year for the west coast. **W6CUF** topped the S.C.V. c.w., as well as the Pacific Division and the entire field with 150-K. In general Jim found conditions somewhat improved over the 1965 SS and puts in a strong bid for the return of the RS(T) to the message preamble.





K0JLL 50,418-303-67-A-13  
 WA0JHB 47,025-333-57-A-24  
 WA0LKL 37,433-244-62-A-20  
 W0KMH 21,825-173-50-A-21  
 WA0QQC 9379- 93-41-A-15  
 WA0MKF 5104- 63-29-A-7  
 WA0KNP 5040- 64-32-A- 9  
 WA0HVR 3375- 50-27-A- 4  
 K0MPH/0 3048- 58-23-A- 5  
 W0KUI 2968- 53-28-B-11  
 WN0PRT 1069- 30-15-A-20  
 WN0PRS 451- 17-18-A-16  
 WA0DKA (WA08 B/W DKA) 84,312-485-89-A-24

W0YC (K08 OTH UXQ, WA0BPU) 81,428-517-63-A-24

**North Dakota**

WA0HYI 97,891-563-71-A-24  
 WA0OAT 15,986-134-49-A-19  
 WN0OVW1 6651- 73-33-A-22  
 W0KON 3500- 50-28-A- 2

**South Dakota**

W0SMV 83,417-569-73-B-24  
 W0CIUC 73,576-506-72-B-20  
 K0ZTV 5220- 72-29-A- 4  
 WN0OML 1105- 30-17-A-21

**DELTA DIVISION**

**Arkansas**

K5TYW 51,268-355-71-B-13  
 WA5KUD 34,375-255-55-A-17  
 W5DTR 30,200-183-64-A-14  
 W5RIT 4520- 57-32-A- 4

**Louisiana**

W5BUB 74,054-424-69-A-24  
 W5ABD (W5EKF, opr.) 44,147-47-17  
 WA5GVB 11,930-301-56-A-19  
 WA5PWX 35,860-257-56-A-18  
 W5ERR 24,060-203-48-A-15  
 WA5MMD 6614- 73-37-A-14  
 WA5NXX 5795- 69-28-A-14

**Mississippi**

K5IIN 65,340-498-66-B-24  
 WA5OYU 1188- 28-19-A-12  
 WA8LHH/5 (WA1DWF, WA8LHH) 11,408-125-45-B-11

**Tennessee**

K4RIN 95,174-525-73-A-24  
 W4WZC 76,720-427-7-A-20  
 WA5QC 71,000-400-70-A-24  
 K4UWH 62,427-353-73-A-20  
 WA4JA (K4LRL, opr.) 39,353-297-53-A-17  
 W4DRT 31,928-243-54-A-22  
 W4OQG 3375- 50-27-A- 3  
 W54AFE 200-10- 8-A- 3  
 WN4CRU (WN4AE, opr.) 1300- 29-20-A-21

**GREAT LAKES DIVISION**

**Kentucky**

WA4CVI 64,800-360-72-A-21  
 WA4TWB 50,600-320-62-A-22  
 W4BEE 11,475-103-45-A-16  
 K4GEZ 9800- 70-70-B-20  
 W4BCV 1628- 31-21-A- 1  
 WA4ZIR 64- 9- 5-A-24  
 WN4CJM 94- 9- 5-A-24

**Michigan**

W8UM (W8CQN, opr.) 132,813-703-75-A-24  
 W8FAW (W3ZFT, opr.) 105,188-561-75-A-24  
 W8VPC 95,809-520-73-A-22  
 W8DQL 86,713-501-70-A-24  
 W8OQH 73,219-413-71-A-23  
 W8CRD 72,420-408-71-A-23  
 WA8GUF 70,428-403-70-A-20  
 W8DUS 63,963-374-70-A-22  
 WA8MAM 57,348-343-66-A-24  
 W8GAI 55,605-340-66-A-16  
 K8ZQE 55,028-320-89-A-24  
 K8CGD 44,100-294-60-A-22  
 WA8MMV 41,791-251-67-A-16  
 K8RDE 33,473-210-62-A- 9  
 WA8FKY 31,500-216-60-A-14  
 W8PVI 28,620-216-53-A-15  
 WA8TON 27,300-301-42-A-24  
 WA8OFJ 24,111-212-57-B-18  
 WA8RSD 22,147-188-57-B-22  
 W8KZM 20,300-140-58-A-16  
 K8HKM 17,868-173-39-A-21  
 K8QKT 17,550-135-52-A- 8  
 WA8FLK 15,000-141-40-A-12  
 WA8MCQ 14,806-120-47-A-10  
 W8MKM 14,681-122-45-A-13  
 WA8LBH 12,300-127-40-A-18  
 W8DM 7800- 80-39-A- 7  
 WN8TOB1 7200- 87-36-A-22  
 WA8QAF 5225- 68-26-A- 5  
 K8UDJ 5100- 60-34-A- 5  
 W8JUP/8 473- 19- 8-A- 8  
 W8VWY 4075- 41-30-A- 4  
 WN8SOP 3188- 57-25-A-17

WA8PVR 2375- 50-19-A-10  
 WASIML 683- 21-13-A- 4  
 WN8UMC 260- 13- 8-A- 6  
 W8SS 120- 8- 6-A- 1  
 W8REN (WA88 NKA RVE) 49,250-316-51-A-24  
 WA8BBB (W8HFM, WA8QAF) 22,381-160-55-A-14  
 WA8CQR (8 oprs.) 12,425-180-28-A-24

**Ohio**

WN8BK 106,575-609-70-A-24  
 W8AEB 90,503-549-66-A-23  
 W8QDH 85,775-470-73-A- 8  
 K8YSO 81,030-447-73-A-23  
 W8ETU 80,450-454-70-A-20  
 W8OYI 78,894-539-73-B-23  
 W8CJNY 76,920-416-73-A-23  
 WA8OCG 74,755-450-66-A-23  
 W8LQA 68,873-442-58-A-17  
 W8QXQ 66,255-424-62-A-23  
 WA8PJA 63,653-369-69-A-24  
 W8DQG 60,635-362-67-A-22  
 W8AQM 60,550-347-70-A-17  
 K8CFH 59,132-415-57-A-21  
 WA8NTA 56,970-422-54-A-24  
 WA8PZA 54,248-361-59-A-24  
 WA8GYT 53,388-320-66-A-16  
 W8ZJM 50,781-267-75-A-17  
 W8AJW 50,563-307-65-A-16  
 W8AKUW 48,275-312-61-A-12  
 W8CQUR 48,398-305-51-A-15  
 W8ELE 46,725-297-62-A-23  
 K8EKG 44,100-296-60-A-11  
 WA8ADJ 42,776-281-61-A-16  
 K8BQY 42,504-392-56-B-17  
 WA8RWU 41,985-288-62-A-21  
 W8QKQ 40,926-277-63-A-24  
 W8FTK/8 40,185-282-57-A-24  
 K8CWA 40,040-256-61-A-23  
 K8EHU/8 39,611-252-63-A-24  
 WA8NSL 38,475-286-54-A-22  
 K8ANA 38,273-205-63-A-18  
 W8EKI 36,013-215-67-A-17  
 K8RSZ 35,400-236-60-A-16  
 K8NBE 35,368-329-43-A-17  
 WA8SHL 34,583-261-53-A-18  
 W8GFF 33,163-190-70-A-16  
 W8VQI 33,188-263-63-B-20  
 W8DWP 32,446-205-62-A-16  
 W8YPT 31,964-263-61-B-12  
 W8OVQ 30,495-214-57-A-15  
 W8SUZ 30,324-266-57-B-14  
 WA8APC 29,280-241-61-B-15  
 W8VCR 25,408-200-64-B- 8  
 W8MCR 25,050-186-65-B-12  
 W8LWZ 22,113-145-61-A- 9  
 W8CEA 21,315-174-49-A- 8  
 K8IKO 18,360-136-54-A-13  
 W8IDM 17,425-147-45-A-11  
 W8COE 17,349-160-41-A-10  
 WA8SLW 16,320-136-48-A-22  
 W8HSK 15,120-126-48-A- 7  
 WA8RCN 14,570-124-47-A-16  
 W8EWF 14,145-123-46-A-10  
 K8BSM 13,668-134-51-B-11  
 WA8RYC 12,850-130-40-A-14  
 WA8FDL 12,690-135-47-B-11  
 WA8NAZ 12,535-111-46-A- 9  
 WA8MGD 12,100-110-44-A-16  
 W8AGGK 11,780-155-38-B-13  
 WA8TYF 10,891- 97-41-A-16  
 K8ELE 10,512-116-41-B-11  
 W8ALE 9855- 78-49-A- 1  
 W8ASKV 9300-123-31-A-17  
 W8NPF 9138-108-34-A-14  
 WA8SCZ 8993-109-33-A-10  
 K8GHS 8740- 92-38-A- 5  
 WA8REN 8693-106-39-A-15  
 K8BPX 8048- 87-37-A- 4  
 K8DZR 7500-100-30-A- 8



K7CTI (W6BZZ) topped both Montana and the North-western Division on c.w. with an impressive 112-plus K. Tom was first licensed when 11 years of age (back in 1958) and holds Amateur Extra as well as Commercial First Phone. His main concern at this time is attending the University of Montana as a Junior majoring in Philosophy.

W8DZG 6825- 70-39-A-17  
 W8CHT 5843- 75-26-A- 6  
 W8KMF 5785- 68-33-A- 7  
 WA8RLW/8 5624- 68-34-B- 9  
 WA8CPT 5290- 62-33-A- 9  
 WN8SOV1 5120- 67-32-A-14  
 WA8FKD 3730- 42-26-A- 3  
 WA8IXI (K8QJ, opr.) 3291- 40-29-B- 7  
 K8KEG 3000- 50-20-A-11  
 W8VZE 2594- 42-25-A- 6  
 WA8SXK 2563- 43-25-A-11  
 WA8TCW 2408- 57-18-A-11  
 WA8UAV 2075- 47-20-A-11  
 W8ZIP 1875- 50-15-A- 8  
 W8SON/8 1780- 26-12-A-14  
 W8VDF 1466- 34-17-A- 6  
 W8RO 1430- 44-13-A- 5  
 WA8SLL 1410- 24-14-A-10  
 WA8EYA 1274- 47-14-B- 9  
 K8MLV 1149- 9- 7-A- 1  
 WN8UIA 1045- 5- 4-A- 9  
 W8SZF 796- 25-13-A- 3

**HUDSON DIVISION**

*Eastern New York*

K2AJA 105,213-596-70-A-24  
 W2MEL 92,565-548-68-A-24  
 WA2OJD 64,528-436-74-B-23  
 WB2DXL 56,645-360-62-A-20  
 WB2UHZ 41,238-279-58-A-24  
 WB2JW 40,480-253-64-A-19  
 W2TFE 30,813-226-53-A-18  
 W82KOY 16,875-150-45-A- 6  
 WB28OA 16,373-177-37-A-17  
 K8SSX/2 10,360-156-24-A- 5  
 W6BZZY 7695- 81-38-A- 5  
 DJ1JN/W2 1736- 36-24-B- 6  
 W2FSL 1575- 42-15-A- 8  
 W2SZ (6 oprs.) 67,620-490-69-B-23

*N. Y. C. - L. I.*

W2GGE 84,600-589-72-B-24  
 K2ZJR 75,970-535-71-B-22  
 W2AJR (WA2UWA, opr.) 66,980-388-68-A- 9  
 K2UQT 60,289-350-69-A-20  
 WB2FTS 50,220-324-62-A-19  
 W2GKZ 47,240-340-68-B-17  
 K1YRB/2 46,903-301-61-A-21  
 K2KD 37,781-235-65-A-21  
 W2D8C (WA2APT, opr.) 26,228-269-39-A-10  
 W2RBA 21,430-172-51-A-18  
 W2RFON 21,838-180-61-B-10  
 K2QMF 21,450-220-39-A-13  
 W2LXK 18,300-125-75-B-22  
 W2DUS 14,175-135-42-A-10  
 W2GQNF 13,640-124-44-A-12  
 WA2YDA 13,340-116-46-A-17  
 WB2WMJ 13,225-115-46-A-15  
 W2BPHO 13,126-125-42-A-17

**DIVISION LEADERS**

**C.W.**

**Single Operator Multioperator**

W3BES K2ZWI Atlantic  
 W9IOP W9HHX Central  
 WA0HYI WA0DKA Dakota  
 K4RIN WA8LHH/5 Delta  
 W8UM W8EDU Great Lakes  
 W2VJN W2SZ Hudson  
 W8TRD W8EEE Midwest  
 W1BGD W1AW New England  
 K7CTI KL7AIZ North-western  
 W6CUF K6LY Pacific  
 W4KFC W4BVV Roanoke  
 K7RAJ W0ANA Rocky Mt.  
 K4VFY WA4UBH Southeastern  
 WA6SBO WA6WOY South-western  
 K6OCX K5LZO West Gul  
 VE5US VE2DCW Canadian

**Phone**

W3GRF WA2HSP  
 W9RQM W9HHX  
 WA0CPX W0HSC  
 K5IIN WA5JWU  
 K8DOC WA8GUW  
 W2RLM W2SZ  
 WA0MOB WA0CHH  
 K1LPL WA1FEH  
 W7ESK WA7BKW  
 WA6LVN K6LY  
 W4KFC K4WJV/4  
 WA0CVS WA7EHB/7  
 W4PZV K4YSB  
 W6ELF K6BPC  
 K5LZO K5VTA  
 VE5US VE3VX





W6KHS 7912-93-43-B-6  
W6NTH/1 6753-73-37-A-16  
W6CLM 7618-82-B-10  
W6BTM 5810-66-34-A-6  
W6AVAS 5184-72-29-A-14  
K6LY (6 oprs.) 56,520-400-72-B-24

**ROANOKE DIVISION**

*North Carolina*

K4E0F 46,655-386-67-A-23  
W0YFT/4 65,632-348-67-B-26  
W4AFFW 46,521-310-61-A-21  
W4OMW 34,999-230-61-A-13  
W4AZQM 32,700-273-48-A-21  
K4QWQ 10,699-103-27-A-7  
W6ABGL 7,811-74-27-A-7  
W4AVVT 5670-81-35-B-11  
W4AWSU 4638-55-35-A-13  
W4AWML 3030-60-24-A-16  
K4KLC/4 2700-50-27-B-8  
W4ANUO 135-9-6-A-2

*South Carolina*

K4WJT 94,313-503-75-A-24  
W4YDD 68,985-438-63-A-24  
W4AVZK 43,605-258-68-A-22  
W4PED 35,000-200-68-A-15  
W4YSJ 14,375-115-50-A-18

*Virginia*

W4KFC 133,469-708-75-A-19  
K3EST/4 109,964-750-74-B-21  
W4YCY 107,005-573-74-A-24  
W4PTR 94,275-532-70-A-23  
K1ANV/4 93,240-632-74-B-23  
K4CG (K3WUW, opr.) 87,095-514-67-A-24  
W4YZC 84,780-472-71-A-22  
W4DVT 84,713-453-74-A-24  
W4ZM 73,540-183-58-A-18  
W4NH 72,243-407-71-A-19  
W4DKU 72,191-419-69-A-22  
K4AEV 48,650-281-70-A-9  
W4GF 37,249-231-63-A-13  
K4FJW 28,875-231-50-A-18  
W4KXV 28,200-183-60-A-12  
W4A4WRW 26,450-183-58-A-15  
K4UY 26,163-184-55-A-19  
K4ASU 21,200-160-53-A-8  
W4CRL 21,165-172-51-A-21  
K4MXF 19,000-150-48-A-8  
W4JAT 18,721-144-42-A-11  
W4MOJ 18,611-141-49-B-7  
K4QY/4 16,170-154-42-A-9  
W4O1DK/4 15,216-165-37-A-16  
K4ORQ 10,448-100-42-A-5  
W4BEGR 10,400-118-32-A-13  
W4NTH 6,708-86-29-B-6  
W4ZUFT/4 423-7-22-B-2  
W4BDHT 3885-57-28-A-9  
W4JXD 3498-37-27-A-9  
W4WBC 2145-39-22-A-3  
W4JJC 1765-18-17-A-2  
W4A4CWN 875-35-13-A-10  
W4IGUP/4 675-29-13-A-3  
W4NDVD 638-17-15-A-7  
W4AVXR 313-13-10-A-3  
W4BVV (W3TMM, W4BVV) 27,000-200-54-A-8

*West Virginia*

W8AKCO 38,976-267-67-A-16  
W6EYF/8 26,860-158-68-A-18  
W8APOS 21,640-192-43-A-16  
W8KX 14,263-163-35-A-7  
W8JWX 5490-61-36-A-10  
W8STWR 413-10-10-A-15

**ROCKY MOUNTAIN DIVISION**

*Colorado*

W6CDP 96,660-537-72-A-22  
W4OCVS 83,800-482-69-A-19  
K9VFN 61,458-408-61-A-24  
W4A1ZS 39,513-284-73-A-19  
K9RTI 37,423-260-60-7  
W6KFX 13,223-129-41-A-9  
W4ONJU 12,852-167-43-B-9  
W6KAU 12,138-119-51-B-7  
W6KPP 7150-81-40-A-6  
W6HEP 7328-82-36-A-13  
W6ACOG 6958-95-37-B-9  
W9ANA (K0PXB, W4OGST) 43,200-360-60-B-20

*Utah*

K7RAJ 113,785-825-73-A-24  
W7QDM 98,153-579-69-A-24  
W4TEBR/7 42,265-262-63-A-20  
K7CLS 41,023-270-61-A-19  
W4AUW 30,400-198-64-A-13  
W47BSG 25,034-195-51-A-18

*New Mexico*

W6JPH/5 102,283-586-70-A-24  
W8BZY/5 63,630-406-63-A-23  
W5DQV 8628-102-34-A-3  
K5MAT 1313-25-21-A-6  
W6ODJ 2065-41-26-A-6  
W45IFX 1040-26-16-A-7

*Wyoming*

W7TSM 57,152-456-64-A-21  
W4TEWC 23,860-225-52-B-24

K7IVJ 24,453-178-53-A-16  
W47CLF 20,999-156-51-A-14  
W4HRM 4184-42-26-B-3  
W47DNZ 1030-4-3-A-1

**SOUTHEASTERN DIVISION**

*Alabama*

W4USM 103,675-556-74-A-24  
K4BQP 35,573-277-54-A-24  
W64AKE 10,810-116-47-B-19  
K4YUP 8500-85-40-A-10  
W4CBG 5133-57-37-A-12  
W4SBD 825-22-15-A-8

*Canal Zone*

KZ5FX 75,880-546-70-B-20

*Eastern Florida*

W4BRB 71,400-444-64-A-23  
W4KET 64,328-350-73-A-15  
W4UQZ 58,511-374-63-A-22  
W4APXP 52,560-329-64-A-15  
W4WYJ 51,536-312-65-A-14  
W4ILE 48,489-304-63-A-16  
W4ALCO 32,470-194-68-A-22  
W44HDH 32,450-220-59-A-20

K7TNW 67,900-400-70-A-16  
W47BNA 51,848-341-62-A-24  
K7RQJ 48,620-293-68-A-9  
K7NTG 41,623-279-60-A-24  
W7CCQ/7 31,270-213-59-A-4  
W7FCD 28,073-200-57-A-15  
W47ETQ 25,436-181-57-A-24  
K7TWS 24,581-173-37-A-24  
W7ATV 19,110-159-49-A-12  
W47GFT 6458-74-41-A-19  
W7KRW 3680-47-32-A-5  
K7HQJ 2130-37-24-A-7  
W47BKJ (W478 BKJ PDJ) 63,456-398-65-A-24  
W47DAZ/7 (W478 DAZ PCV) 20,410-157-52-A-24

*Los Angeles*

W6W (K9ELT, opr.) 139,469-740-75-A-24  
W46URY (W46WSO, opr.) 118,275-807-75-B-24  
K6AEH 103,599-600-71-A-24  
W6OEO 60,714-359-67-A-24  
W6EJJ 60,093-338-70-A-24  
W6BAB 58,115-370-63-A-19  
K6WXX 59,034-402-66-B-20  
W47031-300-60-20  
W6B6KFN 44,103-300-59-A-14  
W6B1QI 44,103-300-59-A-14

W6B6UD 29,435-203-58-A-16  
W6B6CV 20,020-154-52-A-20  
K6BPC (K6GPH, opr.) 17,034-167-51-B-6  
W6B6BH 12,900-108-48-A-20  
W6B6TM 9610-82-42-A-14  
W6B6AHY 8955-103-36-A-11  
W41GTE/6 3713-50-37-A-14  
W6TMC 5280-66-32-A-9  
W6NUHF 4568-67-29-A-24  
W6RCV 2400-200-60-B-13  
W6MHI 1705-32-22-A-8  
W6NSMP 998-34-14-A-16  
K6YFZ 135-9-6-A-5  
W6FTYK 56-8-3-A-1  
W6B6VA 3-1-1-A-1  
W46WOY (W468 WOY WZD) 65,274-499-66-B-16

*San Diego*

W6B6PE (4 oprs.) 42,109-327-66-B-16  
W6B6NR/6 (W686 NFR ROR) 8610-168-41-A-23

*Orange*

W6EIF 79,725-481-67-A-24  
K6CYX 60,996-447-69-B-23  
W6GRTI 36,480-235-64-B-21  
K6DLY/6 44,003-300-60-20  
W6BRND 1913-51-15-A-5  
W4B6TFP 1900-40-19-A-4  
W46YWS 225-14-9-B-10

*San Diego*

W6B6SO (W6EGP/W1NYP, opr.) 142,201-796-71-A-24  
W6B6EX 50,050-286-70-A-23  
W6B6OZH 28,668-179-62-A-15  
W6Y2D 3366-51-33-B-7

*Santa Barbara*

W6GEB 76,600-433-70-A-24  
W6JTA 33,696-304-62-B-14  
K6LBV 32,900-235-56-A-16  
W6BLIV 10,500-101-42-A-9  
W6BSLT 7760-97-32-A-15  
W6BLJL 7556-69-31-A-17  
W6B6FV/6 (W468 CCF DPV) 8405-104-41-B-9

**WEST GULF DIVISION**

*Northern Texas*

K5RHZ 121,545-657-74-A-24  
K2EUI/5 120,081-654-73-A-24  
W4AJMK 51,188-325-63-A-20  
K5PXV 10,868-95-46-B-13  
WN5CXD 3150-60-25-A-15  
W6DYP 3004-48-27-A-8  
W45MZI 220-13-8-A-3

*Oklahoma*

K5OCX 122,638-666-74-A-24  
W5NML 76,653-490-66-A-23  
W6ENOM 46,895-274-67-A-23  
W45NTI 330-12-11-A-2

*Southern Texas*

K5LWL 76,500-452-68-A-22  
W4ZJF/5 59,730-302-66-A-18  
K5ABV 49,440-310-64-A-18  
W45AXS 24,724-180-57-A-9  
W45CXZ 20,865-161-52-A-8  
W5AR 3240-67-27-B-12  
K6RLX/5 2310-45-21-A-5  
W7WJL/5 1800-20-16-A-3  
W45MTE 166-10-7-A-10  
K5LZO (K5LZO, W4LESB) 157,800-1058-75-B-24



"CHECK THOSE ACCURATE TIME PIECES AGAINST WWW BEFORE THE SS--W0APC"



W9DOB/9, top Illinois phone with over 100-K, claims all his friends say he should get a special award because of his antenna system. Spence claims that his dipoles hold his mast up!

**CANADIAN DIVISION**

**Maritime**  
**VE1AE** 11,310-116-39-A-12  
**VO1GF** (4 oprs.) 16,900-162-40-A-24

**Quebec**  
**VE2BUW** 47,598-328-57-A-21  
**VE2AYU** 46,500-375-62-B-24  
**VE2DCW** (VE2s BOW DCW) 40,973-304-54-A-24

**Ontario**  
**VE3REW** 56,420-364-62-A-19  
**VE3AWE** 46,375-303-60-A-13  
**VE3E2M** 45,820-325-58-A-20  
**VE3ON** 45,150-302-60-A-19  
**VE3DDU** 43,218-293-58-A-17  
**VE3GCE** 28,050-204-55-18  
**VE3BQL** 23,850-214-45-A-20  
**VE3DJI** 21,600-204-58-A-9  
**VE3ES** 19,825-163-61-B-11  
**VE3EFV** 14,965-148-41-A-23  
**VE3FIN** 3750- 60-25-A-9

**VE3BLY** 3533- 81-18-4-6  
**VE3CNA** 2875- 52-23-A-6  
**VE3DGB** 2190- 53-16-A-4  
**VE3VX** (5 oprs.) 17,637-199-36-A-24  
**VE3UOT** (VE3s AED EOL FBY) 13,200-163-33-A-24

**Manitoba**  
**VE4SC** 31,968-279-56-B-22

**Saskatchewan**  
**VE5US** (VE5UF opr.) 100,721-603-68-A-23  
**VE5VP** 30,281-218-57-A-14

**Alberta**  
**VE6MA** 30,785-259-46-A-20

**British Columbia**  
**VE7ANP** 43,865-283-62-A-14  
**VE7AGN** 14,159-123-47-A-23  
**VE7BRV** 4153- 77-22-A-15  
**VE7VT** 3875- 50-31-A-9

**Yukon-N.W.T.**  
**VE8BB** 32,700-220-60-A-14

**K3UID** 990-30-11-A-4  
**W3ONP** 432- 16- 9-A- -  
**WA3ENM** 153- 9- 6-A- 3  
**K3GLJ** 147- 11- 7-B- 4  
**W3CBP** 120- 8- 5-A- 3  
**WA3EPT** (7 oprs.) 64,668-478-68-B-24

**Southern New Jersey**  
**W2ORA** 65,178-307-71-A-24  
**K2PZF** 40,788-309-66-B-20  
**W2QDY** 38,200-300-62-B-20  
**K2CPR** 39,728-152-63-A-19  
**K2AA/2** (W2FY3 opr.) 28,800-150-64-A-19  
**W2B2YF** 22,624-205-56-B-12  
**K2AGU** 18,473-190-49-B-12  
**W2B2FOC** 13,200-100-44-A-11  
**W2ADVU** 7378-109-34-B-10  
**W2DAJ** 5082- 61-28-A- 4  
**W2BWX** 3916- 54-27-B- 7

**W2BQEV** (WB2s QAC QEV) 18,477-143-43-A-16  
**W2WVW/2** (WB2s NUC P8X) 4088- 74-28-B-19

**Western Pennsylvania**  
**K3KMO** 112,573-540-69-A-24  
**K3FNW** 54,809-300-61-A-22  
**K3SIQ** 34,572-258-67-B-17  
**WA3BGE/3** 30,754-175-57-A-18  
**K3UGM** 9300-100-31-A-19  
**WA3AWH** 4368- 52-28-A- 9  
**WA3RD/3** 4248- 59-24-A-13  
**K3HKK** (W2KAT, opr.) 4000- 50-20-A- 6  
**W3WLF** 3750- 50-25-A- 6  
**W3KQD** 1275- 25-17-A- -  
**K3SRB** 891- 27-11-A- 4  
**W3SMX** 360- 12-10-A- 5  
**K3LVA** 78- 13- 2-A- 6

**PHONE SCORES**

**ATLANTIC DIVISION**

**Delaware**  
**W3GAU** 50,530-256-65-A-9  
**WA3DUM** 11,215-115-36-A-11  
**W3IYE** 6816- 71-32-A- -  
**W3DRD** 6660- 60-37-A- 8  
**W3HC** 5690- 68-35-B- 6

**Eastern Pennsylvania**  
**K3JJG/3** 158,118-730-73-A-24  
**W3BES** 155,224-719-72-A-24  
**W3LWU/3** (K3DVS, opr.) 117,504-650-72-A-24  
**WA3COJ** 99,756-489-58-A- 9  
**W3GHM** 83,020-598-70-B-18  
**WA3CQW/3** 79,002-420-63-A-24  
**WA3DCM** 69,948-406-58-A-24  
**WA3CEJ** 53,244-307-58-A-21  
**K3TGM** 50,634-291-58-A-21  
**WA3XZ** 49,572-324-51-A- -  
**K3DPQ** 48,192-251-64-A-21  
**W3EWE** 38,877-223-57-A-22  
**K3PSW** 35,910-201-60-A-19  
**W3QMZ** 32,981-280-59-B-18  
**K3LJZ** 30,677-201-51-A-13  
**W3KDF** 29,376-192-51-A-10  
**W3NOH** 29,025-225-43-A- 8  
**K3EGE** 27,352-216-61-B-17  
**W3MWC** 25,946-179-49-A- 6  
**K3BNS** 25,650-285-45-B-14  
**W3DHM** 24,840-138-60-B- -  
**K3HYT** 20,625-125-55-A-13  
**K3GGQ** 18,768-136-46-A- -  
**W3ISE** 15,750-125-42-A-11  
**K3GNI** 12,870-110-39-A- 9  
**WA3CDZ** 12,402-163-39-B-16  
**WA3DQR** 9135-105-29-A-17  
**WA3FUE** 4703-106-15-A-10  
**K3MCO** 4248- 59-24-A- 4  
**W3STA** 3363- 59-19-A- 6  
**WA3ERJ** 2836- 36-17-A- 4  
**K3JLI** 2160- 36-20-A- 4  
**WA3DHV** 1890- 46-14-A-16  
**W3BUR** 1584- 36-22-B- -

**W3BN** (K3TEJ, opr.) 1224- 36-17-B- 2  
**W3EQA** 1200- 30-20-B- 2  
**W3KT** 1152- 24-16-A- 3  
**WA3GGH** 1020- 34-10-A-17  
**WA3CMD** 759- 23-11-A-10  
**W3EMH** 702- 20-12-A- 6  
**K3YWJ/3** 495- 15-11-A- 1  
**K2VPL/3** 396- 44- 3-A-13  
**W3PNL/3** 360- 13-10-A- 3  
**K3FSV** 336- 16- 7-A- 1  
**K3PLJ** 288- 12- 8-A- 1  
**WA3DNV** 24- 4- 2-A- 1  
**K3HNP** 3- 1- 1-A- 1  
**W3OK** (6 oprs.) 55,060-340-53-A-22

**Maryland-D. C.**  
**W3GRF** (K1ANV, opr.) 164,141-753-73-A-23  
**W3AZD** 123,475-575-71-A-24  
**W3ZKH** 105,525-705-75-B-23  
**K3EST** 102,934-700-74-B-23  
**W3TOO** 93,827-441-71-A-24  
**W3MVB** 86,560-460-62-A-18  
**W3EIS** 66,228-335-65-A-24  
**K3JYZ** 54,932-376-71-B-19  
**W3MCG** 43,024-206-68-A-19  
**W3KMV** 40,000-313-64-B-15  
**WA2DHF/3** 36,816-236-52-A-24  
**K3FKU** 31,992-250-43-A-24  
**W3JPT** 27,448-152-58-A-23  
**W3NPZ** 26,130-201-65-B- -  
**W3ZA** 23,230-124-60-A-16  
**W3AYS** 21,285-129-55-A- 9  
**WA3AMH** 19,467-170-42-A-19  
**WA3BNT** 13,200-100-66-B- -  
**WA3XW** 10,812-106-51-B- 7  
**K3KEE** 10,611-197-27-B-11  
**W3ZNH** 9234- 86-36-A- 4  
**W3HRE** 8358- 99-28-A-13  
**W3MFI** 8100- 75-36-A-11  
**K3ANA** 6603- 71-31-A-11  
**WA3AFY** 1536- 48-16-B- 6  
**W3CSZ** 1224- 26-16-A- 3



"I WISH TO PLACE A WANT AD FOR A SCHEDULE WITH A KP4 TEN MINUTES PRIOR TO THE 1967 C.W. SS."

**W2H2W** 3864- 43-23-A- 4  
**W2BLY** 3075- 41-25-A- 3  
**W2MNM** 2335- 41-25-A- 3  
**W2OWA** 2250- 27-20-A- 8  
**W2VX** 1305- 29-15-A- 3  
**W2BQL** 1238- 29-15-A- 4  
**W2PZD** 1144- 16- 3-A-17  
**W2AAL** 1122- 34-17-B- 9  
**K2IEO** 943- 8- 2- -  
**W2ZVW** 98- 7- 7-B- 1  
**WA2HSP** (WA2s EMB HSP) 77,527-385-66-A-23  
**WB2RVX** (W2PJC, WB2RVX, WN2UVB) 31,311-213-49-A-20  
**K2ZOM** (K2ZOM, K3NQG) 9741- 67-34-A-14

**W3KJM** 9- 3- 1-A- 1  
**WA3BLE** (WA3s BHT BLD) 26,838-216-63-B-21  
**WA3AOQ** (WA3s AOQ AYC) 26,838-216-63-B-21

**CENTRAL DIVISION**

**Illinois**  
**W2DOB/9** 104,580-504-70-A-22  
**W9LNU** 65,700-300-73-A-18  
**WA9HW** 61,386-324-63-A-23  
**W9XCO** 55,787-292-89-A-20  
**W9GXR** 51,225-255-67-A-22  
**K9MFD** 46,058-224-69-A-18  
**W9GEG** 43,400-316-70-B-18  
**W9YRU** 40,656-308-66-B-22  
**K9QFJ** 31,902-206-52-A-19  
**W9KRV** 29,406-169-58-A-16  
**K9DMW** 27,666-174-53-A-22  
**WA9FBC/9** 26,856-189-48-A-21  
**W9JTT** 25,740-156-55-A-15  
**W9HBJ** 23,814-163-49-A-15  
**W9YWX** 17,613-155-57-B- 8  
**W9CRN** 17,014-105-67-A-13  
**W9YDX** 14,835-115-43-A- 9  
**K9SLK** 14,523-103-47-A-13  
**WA9QFT** 10,887- 96-38-A-18  
**WA9NFS** 8190- 91-30-A- 7  
**WA9NFK** 6160- 90-35-B-13  
**WA9KWP** 4352- 64-34- 6  
**WA9RRT** 2052- 36-19-A- 3  
**WA9QXT** 1666- 19-12-A- 5  
**WA9NWK** 1488- 31-16-A- 7  
**WA9JIS** 810- 27-10-A- 6  
**WA9QOQ** 690- 24-15-B- 3  
**WA9KLU** 51- 72- 6- 4- 4  
**WN9TFY** 50- 6- 3-A-14  
**WA9QMB** 48- 4- 4-A- 1  
**WN9RLJ** 6- 2- 1-A- 1  
**WA9LUD** (WA9s LUD NQ) 24,474-413-66-A-24

**Western New York**  
**WA2UJM** 109,038-537-68-A-23  
**W2VDX** 77,106-382-71-A-22  
**WA2BEX** 35,757-206-58-A-15  
**W3TBF/2** 35,108-263-67-B-21  
**W2PDB** 34,776-168-69-A-14  
**WB2SJT** 33,549-211-53-A-18  
**W2RHT** 24,666-150-55-A-19  
**WB2RCK** 23,310-222-35-A-13  
**W2SSC** 21,945-200-55-B- 6  
**WB2PCP** 18,240-152-40-A-15  
**WA2AQW** 12,702-73-58-A- 4  
**WB2SNS** 11,264-128-44-B- -  
**WA2QKT** 8604- 81-36-A-13  
**WB2SRV** 4995- 67-30-A-14  
**W2CZT** 3844- 62-31-B- 6  
**WB2RMM** 2070- 45-23-B- 3  
**WB2HZZ** 1368- 29-16-A- 2  
**WA2SEY** 945- 21-15-A- 1  
**WB2AGX** 398- 12-12-B- 2  
**WA2KMI** 260- 13-10-B- 2  
**WB2SMD** 27- 3- 3-A- 1  
**K2KTK** 3- 1- 1-A- 1  
**W2SEI** 3- 1- 1-A- 1  
**W2ABV** 3- 1- 1-A- 1  
**K2ZWI** (4 oprs.) 64,608-339-64-A-22  
**WB2HEX** (4 oprs.) 46,965-253-62-A-23  
**WB2NJJ** (WB2s NJN SXJ) 49,948-356-58-B-20  
**K2CC** (11 oprs.) 40,260-337-60-B-23  
**W2OFQ/2** (8 oprs.) 31,050-337-50-B-24



**K4RIN**, top c.w. for Tennessee and the Delta Division, claims the sick expression was due to trying to eat, sleep and operate simultaneously plus hearing W9IOP's number 846 to his 501!

WA9PIM (WA9s JDV PIM)  
18,603-117-53-A-14  
WA9BRE (6 oprs.)  
6438-74-29-A-18

**Indiana**

K9KLR 97,485-485-87-A-21  
WA9AUM 54,091-348-51-A-13  
W9LKI 53,723-286-65-A-18  
K9DYZ 45,927-389-54-A-23  
K9WKK 41,989-358-54-A-19  
WA9BRD 33,825-208-55-A-16  
K9FIC 31,320-174-60-A-17  
WA9FHF 26,145-125-7-A-10  
WA9AQZ 25,540-206-40-A-18  
W9BF (K9ULF, opr.)  
22,176-168-44-A-10  
W9JOO 14,000-140-50-B-11  
WA9MQI 11,824-90-41-A-11  
WA9QMX 11,439-124-31-A-11  
W1DRN/9 11,400-100-38-A-4  
W9JFX (WA9CYG, opr.)  
3510-60-20-A-9

W9DGA 1084-7-4-A-1  
K9MMH (K9MMH,  
WA9AMZ)  
63,160-358-64-A-24  
WA9KOH (WA8ETV,  
WA9MXG 8658-78-37-A-14

**Wisconsin**

W9RQM 132,400-601-73-A-24  
W9YT (K9LBQ, opr.)  
126,540-580-74-A-24  
WA9AIB/9 42,950-225-25-A-13  
W9QQQ 37,768-217-58-A-16  
W9GWF 32,080-222-70-B-10  
WA9NPB 28,540-154-60-A-8  
WA9IQN 18,300-127-50-A-19  
W9FBC 13,500-125-36-A-11  
WA9HCZ 12,475-89-24-A-15  
WA9NVY 11,692-109-33-A-10  
K9HFR 10,320-120-43-B-11  
W9GIL 10,296-66-52-A--  
K9EBL 10,200-100-34-A--  
WA9FGL 8505-124-35-B-11  
K9LJU 7768-217-58-A-16  
W9KXK 5680-11-40-B-6  
WA9NDV 3240-55-20-A-6  
K9GDF 1326-26-17-A-2  
WA9MJG 1272-27-16-A-7  
WA9IAT 1135-23-15-A-2  
K9BCB 1035-27-6-A-2  
K9JPS 468-27-6-A-2  
WA9OMO 252-14-6-A-11  
W9GJV/9 9-3-1-A-1  
WA9NLT 6-2-1-A-1  
WA9SZC 6-2-1-A-1  
W9HXH (5 oprs.)  
85,553-614-71-B-24  
K9YBC (K9s LYB)  
79,295-398-87-A-22

**DAKOTA DIVISION**

**Minnesota**

K9IUZ 76,809-360-70-A-21  
WA9KEQ 54,371-274-87-A-17  
WA9HVR 50,707-369-65-A-19  
WA9BWM 43,719-247-59-A--  
W9YX (WA9GVV, opr.)  
43,148-263-55-A-20  
WA9GYQ 40,920-220-62-A-9  
WA9BJK 37,376-293-64-B-22  
K9ZXE 35,457-202-57-A-20  
WA9IKP 17,848-117-48-A-10  
W9SZW 9024-95-32-A-9  
K9MPH/9 7527-97-26-A-3  
WA9KWO 4450-53-23-A-10  
WA9JHB 777-20-10-A-3  
W9KUI 28-4-B-9

**North Dakota**

W9KON 73,926-335-74-A-10  
WA9FWC 53,010-291-62-A-18  
W9KZZ 26,901-228-59-B-9  
WA9EYI 450-15-10-A-1  
W9ESC (multiopr.)  
104,142-549-68-A--  
WA9LJN (WA9s LJM LNJ)  
20,360-140-49-A-17

**South Dakota**

WA9CPX 80,380-379-70-A-19  
W9CUC 79,994-542-74-B-19  
WA9CJI 47,778-284-55-A-15  
WA9MWN 25,758-169-54-A-21  
K9ZTV 3366-51-22-A-2

**DELTA DIVISION**

**Arkansas**

WA5NCJ 41,194-322-63-B-20  
WA5MUD 39,162-214-61-A-23  
WA5BQI 6831-70-33-A-11

**Louisiana**

W5ZBC 85,600-470-60-A-19  
K5AGI 48,992-281-57-A-18  
WA5LGO 46,332-234-66-A-19  
WA5EAM 31,203-300-52-B-9  
W5ERR 23,616-165-48-A-15  
K7YUC/5 18,998-161-59-B-20  
W9FPS 10,658-45-19-A-10  
WA5LJB 5040-53-32-A-8  
K5YMM 2988-42-24-A-6  
WA5JWU (WA5s JWU NWB)  
39,480-238-56-A-17

WA5NLJ (WA5s GVB NLJ)  
32,157-204-54-A-22  
W5ABD (9 oprs.)  
31,941-257-63-B-17

**Mississippi**

K5IIN 89,625-600-75-B-24  
K5SVC 48,972-371-66-B-23  
W5NCB 16,368-124-44-A-15

**Tennessee**

W4SQE 44,485-223-65-A-18  
WA4WTO 42,030-236-60-A-18  
WA4GW 25,522-134-61-A-18  
WB4BOV 14,664-154-61-B-8  
K4UPH 7554-78-24-A-6  
W4OGQ 3970-43-23-A-3  
WN4CRU 11-5-1-A-5

**GREAT LAKES DIVISION**

**Kentucky**

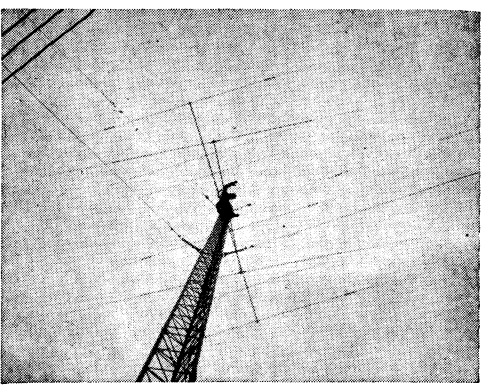
W4WYX 48,735-285-57-A-24  
WA4UAZ 36,000-200-80-A-8  
W4CVI 29,967-142-88-A-13  
K4RZK 27,136-212-64-B-11  
WA4TWB 25,758-159-54-A-24  
K4VZI 5005-46-30-A-9  
WA4ZLR 1860-31-20-A-4  
W4BCR 3-1-1-A-5

**Michigan**

W8UM (W8FAW, opr.)  
146,197-665-73-A-24  
WA8CZH 71,073-370-65-A-13  
W4CWT 55,275-370-87-A-19  
WA8RYT 47,345-292-83-A-13  
W8QQL 46,512-272-57-A-20  
K8BGZ 37,352-284-64-B-20  
W8GAI 33,852-184-62-A-10  
WA8SQN 27,032-170-52-A-11  
WA8RIL 22,820-141-89-B-14  
WA8OSL 14,280-119-40-A-13  
W8DQL 8037-71-38-A-6  
WA8OEE 3696-56-28-B-3  
W8GS 2726-47-29-B-3  
W8CQB 1768-24-16-B-2  
W8NBN 1504-47-16-B-2  
W8VWY 1230-41-10-A-2  
W8MAM 1024-4-2-A-1  
K8ZJU 630-21-10-A-2  
WA8GVF 585-15-13-A-9  
W8GUF (W8s GUF, HHO)  
120,225-575-70-A-24  
K8TFO (K8s AXV TFO,  
WA8MOA)  
45,078-342-66-B-23  
WA8CQR (9 oprs.)  
26,785-247-55-B-24  
W8MF (WA8s LK MCJ)  
PVR)  
156-180-41-A-24  
WA8LAY (W8CPR, WA8s  
LAY QCW)  
19,252-117-52-A-11  
W8RVD (K8GD, W8s HXZ  
RVD)  
18,814-205-46-B-23

**Ohio**

K8DOC (K8TAH, opr.)  
165,165-796-70-A-24  
W8MCR 133,273-621-71-B-22  
W8AEB 69,490-440-70-A-23  
W8AFKD 86,200-403-71-A-22  
W8HDB 80,640-567-72-B-24  
W8LEO 74,800-551-68-B-22  
W8CWU 64,908-301-72-A-22  
K8JED 62,920-484-65-B-24  
W8WPC 51,285-264-65-A-22  
W8AKTI 50,244-318-53-A-22  
W8CEA 47,532-233-68-A-14  
W8PZA 47,254-297-52-A-23  
K8BSM 46,944-326-72-B-16  
W8NAAZ 43,461-220-66-A-13  
W8NBK 42,780-345-62-B-17  
W8SHK 40,430-311-65-B-17  
W8SRLW/8  
37,000-201-60-A-24  
W8FIDL 36,018-207-58-A-17  
W8XGQ 24,251-213-54-A-17  
W8TUPH 31,771-263-39-A-12  
W8SUS 31,755-183-58-A-15  
29,905-208-47-A-20  
W8OQV 27,693-181-51-A-13  
W8CHX 26,870-200-85-A-19  
W8YQI 24,536-214-62-B-21  
W8AJW 25,251-160-51-A-13  
W9FTK/8 24,804-157-53-A-24  
K8BPX/8 21,060-156-45-A-7  
20,320-115-56-A-11  
W8ZJM 20,236-115-56-A-11  
19,508-130-11-A-18  
19,202-126-51-A-12  
19,110-137-70-B-8  
16,686-103-54-A-12  
16,497-117-47-A-10  
W8VZE 14,378-107-45-A-14  
W8ICN 13,500-131-30-A-11  
K8CQA 10,578-82-43-A-19  
W8IDM 10,379-94-37-A-11  
10,101-130-26-A-11  
W8GPE 9824-89-37-A-5  
9554-81-15-A-5  
8400-100-42-B-18  
8290-81-45-B-10  
7956-78-34-A-4  
7524-66-38-A-4



Leading E. Pa. takes some doing with one of the FRC crew managing to do so. Once again this year this was the case as **K3JJG/3** posted 158-K during the phone weekend. Ed is shown atop a 70-ft. tower with that 2-L 40 and the tribander at 80 and 70 feet respectively.

WSPOR 7020-65-36-A-8  
WA8GYT 6930-66-35-A-6  
W8SKV 6782-69-33-A-5  
K8EKG 5037-73-23-A-3  
W8DWP 4774-37-34-A-2  
W8HYV 4036-73-22-B-9  
W8EPP 3978-51-26-A-9  
W8SSL 3690-43-30-A-10  
W8EYA 3113-42-25-A-14  
W8LVT 2907-51-19-A-8  
W8SZF 2310-35-22-A-3  
W8SDV 2268-42-15-A-7  
K8VJG 1896-40-24-B-3  
W8APC 1824-32-19-A-7  
K8EHE 1485-33-15-A-8  
W8SQNJ 1260-31-14-A-3  
K8GVK/8 1036-12-1-A-7  
W8SJV 1020-7-1-A-3  
W8YPT 1018-3-2-A-1  
W8FZS 960-20-16-A-3  
W8BIM 796-19-14-A-3  
W8SLW 612-17-1-A-6  
W8AREN 360-15-8-A-6  
W8PTN 224-13-6-A-1  
K8VVB 180-10-6-A-2  
K8SLF 84-7-4-A-2  
63-5-5-A-1  
60-5-5-A-2  
36-4-3-A-1  
18-6-1-A-2  
15-5-1-A-2  
15-5-1-A-2  
W8SSQ 14-7-1-A-11  
K8WUD 12-4-1-A-6  
W8RZD 11-6-1-A-3

**HUDSON DIVISION**

*Eastern New York*

K2JIA 133,408-614-72-A-24  
W2BJA 125,102-588-71-A-24  
W2ZTF 64,072-330-64-A-22  
W2MBI 30,000-200-50-A-20  
W2KXZ 15,840-180-44-B-24  
W2DTE 14,500-147-50-B-11  
W2PPK 11,730-115-34-A-8  
W2BZH 11,700-100-39-A-6  
W2PUH 9161-100-31-A-13  
W2BUU 5400-100-18-A-9  
W2BYI 2500-50-25-B-13  
W2BRBG 300-20-5-A-3  
W2SZ (5 oprs.)  
87,016-600-73-B-23  
W2GMM (W2s DXL GMM  
JYV)  
35,160-293-60-B-14  
N. Y. C. L. I.  
W2RLM 166,780-785-72-A-24  
W2ZQE 84,456-406-69-A-23  
W8AXX/2 56,210-391-73-B-20  
K2UQT 53,448-264-68-A-19



**W9ISJ**, top c.w. for Minnesota utilizes dipoles just 2.5 feet up on 80, 40 and 20.

WB2FON 43,974-350-63-B-18  
WB6NFK/2 42,215-273-53-A-17  
W2GKZ 38,740-278-68-A-17  
WB2WBT 25,776-179-48-A-19  
W2AJR (WA2UWA opr.)  
24,865-185-43-A-18  
K2BAR 20,784-220-48-B-8  
W2LEJ 17,278-163-53-B-16  
WA2YJN 15,876-129-42-A-10  
WB2RSW 12,087-80-51-A-9  
WB2PJH 12,084-106-38-A-16  
W2MGV 10,584-84-42-A-14  
W2ZV 6,318-54-39-13-B  
WA2ZTG 5,378-84-32-B-7  
WB2GCD 5,162-89-29-B-12  
WB4AFN/2 4,506-70-25-B-6  
WB2BNK/2 4,148-60-23-A-6  
WB2VIO 4,275-57-25-A-6  
WB2UQP 4,090-52-20-A-5  
W2OQI 2,890-80-18-B-9  
W2HAE 2,680-23-20-A-4  
WB2RZF 2,416-26-21-B-5  
W2INT 1,800-80-15-A-6  
WB2UPV 1,536-48-16-B-4  
W2NBI 1,260-30-14-A-4  
WB2YZU 1,095-38-10-A-4  
WB2QIL 1,092-26-14-A-7  
WB2EMJ 1,002-1-1-A-3  
W2DID 839-22-13-A-3  
W2ADE (WAZZFW, opr.)  
468-26-6-A- -  
WB2PHO 225-15-6-A- -  
W2UNS 180-10-8-A-1  
W2XQW 15-3-2-A-1  
W2D8C (5 oprs)  
66,402-357-62-A-24  
WB2MYA (WB2s MVA VYM)  
54,069-272-67-A-24  
WB2UPB (4 oprs)  
43,983-318-47-A-24  
WB2MDH (WB2s MDH QZD)  
43,960-314-70-B- -  
WB2COL (WB2s COL LBJ)  
33,936-202-56-A-22  
WB2MJD (WB2s MJD PLF)  
31,200-200-52-A-21  
WA2PXB (WB2s RKB WNJ  
WXP) 23,079-243-49-B-22  
WA2LEN/2 (multiopt.)  
8775-117-25-A-19  
WB2UGP (WB2s EMJ UG)  
1405-15-9-A-2

**Northern New Jersey**

K2OMP 53,064-401-67-A-19  
WB2SSZ 49,870-282-60-A-19  
WB2CHK 47,817-380-63-B- -  
W2DMJ 33,090-197-56-A-11  
WB2PAR 14,700-140-35-A-14  
W2ECO 11,211-101-37-A-12  
WB2RKK 10,200-100-34-A-13  
WB2UCC 4636-52-24-A-6  
WB2JYM 3682-48-26-A-3  
WB2TSY 3808-68-28-B-8  
WB2NHT 2430-45-18-A-5  
W2IHA 2400-40-20-A-4  
WB2UOQ 1368-38-18-B-6  
WA2ASM 1104-23-16-A-5  
WB2KCN 567-21-9-A-4  
WB2JHQ (WB2s JHQ PIA  
RTF) 55,052-379-49-A-24  
W2GLY/2 (W2TJD, WB2s  
RSS VPB)  
37,179-244-51-A-19  
WB2FBO (4 oprs)  
31,773-312-51-B-23  
WB2KQC (WB2, KQC VFT)  
11,876-102-39-A-11

**MIDWEST DIVISION**

**Iowa**  
W07YK 89,556-439-68-A-20

WA0JJA 87,220-430-68-A-22  
W0BVR 47,265-347-69-B-21  
WA0KXJ 26,136-244-54-B-22  
W0ATA 21,303-132-54-A-12  
WB2FCA/0 14,112-112-42-A-6  
WA0JSD 10,268-94-37-A-14  
W0GHZ/0 (WA0s JEG MTZ)  
66,924-506-66-B-23  
W0CRG (5 oprs)  
61,650-360-60-A-21

**Kansas**  
K0BHM 97,500-500-65-A-18  
W0LXA 58,504-412-71-B-21  
WA0LWC 33,300-187-60-A-15  
WA0KDJ 20,881-141-47-A-15

**Missouri**  
K0LGG 113,200-551-68-A-21  
WA0APC 99,774-432-69-A-24  
K0REY 96,000-503-64-A-23  
K0BXI (WA0EMS, opr.)  
72,400-341-70-A-24  
W0TDR 55,378-318-57-A-16  
W0PEE 42,958-222-63-A-24  
W0QWS 23,432-134-65-B-18  
WA0KBZ 41,145-211-65-A-2  
WA0AHL 39,498-343-58-B-16  
WA5EFN/0 37,500-314-60-B-18  
K0GVS 34,056-172-66-A-12  
K0YIP 24,960-130-64-A-9  
WA0KXZ 20,160-233-49-B-13  
WA0ICK 9102-82-37-A-7  
K0JPL 8436-112-33-B-7  
WA0PYJ 8400-100-28-A-9  
K0JPG 5290-55-26-A-4  
WA0BWX 2592-36-24-A-5  
W0ICQY 288-12-8-A-2  
WA0CHH (4 oprs)  
138,937-620-75-A-24  
W0EEE (6 oprs)  
100,764-469-72-A-24  
WA0FAE (K0IOG, WA0FAE)  
30,444-258-59-B-23

**Nebraska**  
WA0MOS 144,504-674-72-A-24  
WA0H8B 109,603-555-66-A-24  
WA0JZY 87,800-451-65-A-20  
W0GYM 27,280-221-62-B-3  
K0LFA 16,684-194-43-B-10  
WA0HGY 7905-85-31-A-4

**NEW ENGLAND DIVISION**

**Connecticut**  
W1BGD\* 103,200-700-73-B-23  
K1THQ 94,370-471-67-A-23  
WA1AWX 73,030-515-70-B-22  
K1ZND 63,063-319-66-A-21  
KBSH/1 54,545-355-51-A-21  
W1CNY 52,008-344-66-B-24  
W1CSM 50,991-267-63-A-24  
W1BIH 49,920-290-74-B-13  
W1ECH 42,548-234-61-A-14  
K1HTV 37,800-200-63-A-12  
W1LVL 30,784-296-52-B-12  
W1ACNB 21,150-150-47-A-11  
W1JMY\* 17,120-156-52-B-6  
WA1GHV 12,400-124-50-A-22  
WA1PBR 14,400-150-32-A-14  
K1DPB 12,137-132-31-A-15  
W1BDJ\* 12,126-94-43-A-13  
W1TCJ\* 5992-78-32-B-6  
W1AW\* (W1QIS, opr.)  
5427-102-27-B- -  
W1DJD 487-13-11-A-1  
W1LXV (WA1BGX, WA2YTJ)  
39,136-341-56-B-20

**Eastern Massachusetts**  
K1KNI 51,504-297-58-A-24  
WA1FZK 25,864-246-53-B-20  
WA1GRP 22,842-163-47-A-21  
K1ZQV 18,040-207-44-B-24  
WA1BYA 14,535-70-31-B-15  
W1JYH 13,200-100-66-B-9  
WA1EIH 11,325-76-50-A-9  
K1YRG 10,692-100-36-A-7  
W1TKG 7248-76-32-A-13  
W1MRQ 7128-99-36-B-6  
WA1BQ 7115-70-31-B-5  
W1LHY 7095-108-33-B-5  
WA1BFD 6150-75-41-A-5  
W1PLJ 5112-71-36-B-10  
W1BIEJ 1364-31-22-B-7  
K1WJD 390-13-10-A-4  
K1WLM 288-16-6-A-2  
WA1FEK 108-6-6-A-1

**Maine**  
K1ACT 57,173-304-63-A-22  
K1GAX 51,188-283-65-A-19  
W1DIS 45,720-254-60-A-18  
W1NJL/1 14,490-138-35-A-10  
W1GKJ 12,900-100-43-A-10

**New Hampshire**  
W1DYE/1 70,894-357-66-A-16  
W1PZ 18,920-160-56-B-11

**Rhode Island**  
K1LPL 142,569-651-73-A-24  
W1HQL 97,696-697-71-B- -  
W1BFB 62,424-306-68-A-18  
W1KMW (K1JYN, opr.)  
45,720-254-60-A-18  
K1IHM 37,632-295-64-B-22  
WA1FNK 27,768-178-52-A-22  
WA1EEJ 19,000-50-12-A-6  
K1NQG (W1NIGD, opr.)  
2008-38-22-A-13

**Vermont**  
W1UOP/1 47,120-381-62-B-18  
K1UDP/1 4608-77-32-B-8

**Western Massachusetts**  
K1NWE 90,072-417-72-A-24  
K1KNE 49,295-292-59-A-22  
W1EED 35,742-27-63-B-15  
K1DGG/1 18,954-162-39-A-19  
W1EOB 18,252-119-54-B- -  
W1WIF 14,016-146-48-B-9  
WA1FEH (K1DFC, WA1FEH)  
51,100-365-70-B-24

**PACIFIC DIVISION**

**East Bay**  
WA6IVN 95,400-668-72-B-24  
W6VNH 72,030-345-70-A-21  
WB6PPP 38,208-200-64-A-21  
WB6BID 33,129-205-54-A-22  
WB6LRV 28,236-181-52-A-24

**Hawaii**  
KH6IJ 57,270-415-69-B-19  
W0PAN/KH6  
20,097-160-63-B-9

**Nevada**  
WA7EJZ 30,225-156-65-A-19  
K8RQO/7 8438-76-37-A-19  
WAD7IA 2805-49-22-A-9

**Sacramento Valley**  
WB6LTY 48,945-252-65-A-17  
WA6JDT 29,440-164-58-A-14  
W6VUZ 28,260-157-60-A-13  
WB6UNP 22,842-141-54-A-15  
WB6ONU 16,500-110-50-A-19  
WB6MZC 15,382-154-47-B- -

**San Francisco**  
W6BIP 48,580-244-65-A-21  
WA6AUD 39,902-281-71-B-20  
WA6RGM 13,530-110-41-A-13  
W6BOGF 11,448-106-36-A-9

**San Joaquin Valley**  
WB6NCJ 20,732-136-51-A-16

**Santa Clara Valley**  
WB6ITM 20,904-134-52-A-16  
18,700-173-55-B-17  
WB6GRX 15,382-154-47-B- -  
K6CQF 450-15-10-A- -  
K6LY (5 oprs)  
77,420-567-70-B-23  
WB6GFJ (4 oprs)  
21,960-514-70-B-24  
WB6AAZ (WB6L IQL LWO)  
37,364-222-57-A-23  
WB6JOD (W6KHS, WB6FFB)  
24,949-211-61-B-16

**ROANOKE DIVISION**

**North Carolina**  
W0YFT/4 44,200-341-65-B-14  
WA4LSA 37,059-204-80-A-16  
W4MPT 32,895-325-61-B-16  
WA4IWE 15,382-154-47-B- -  
WA4EFW 16,296-201-42-B-12  
WA4KWC 10,240-77-40-A-9  
WA4NUO 4050-54-25-A-11

**South Carolina**  
K4WJT 86,478-406-71-B-19  
W4YSJ 24,400-200-61-B-17  
WA4VZK 17,250-126-46-A-18  
W4ULY 14,700-100-49-A-12  
K4WJV/4 (8 oprs)  
85,145-522-63-A-24

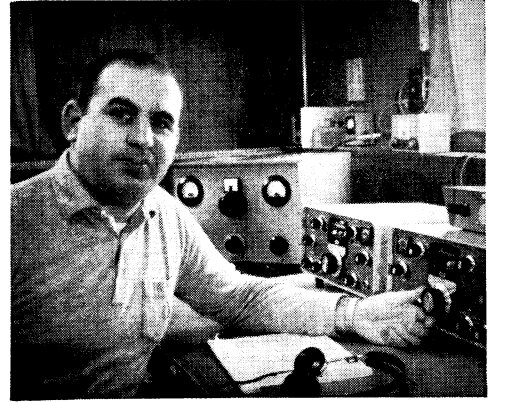
**Virginia**  
W4KFC 138,250-611-75-A-21  
W4BVV 127,161-601-71-A-24  
K4CG (K3WV, opr.)  
118,810-70-24-A- -  
W4PTR 82,310-410-67-A-23  
W4MZR 41,950-210-65-A-11  
W4YQY 41,716-234-58-A-20  
WA0IDK/4 31,824-221-48-A-23  
WA4TGA 15,686-186-48-A-15  
W4JVN 14,108-105-45-A-4  
W4BIZ 14,040-117-40-A-7  
K4ORQ 13,739-107-43-A-11  
W4WBC 11,160-124-45-B-8  
W4MOJ 8424-117-36-B-6  
W4CF 4747-55-16-A- -  
W4DKU 3312-48-23-A-3  
W4YCC 2565-45-19-A-3  
W4BCRL 1305-29-15-A-6  
W4JXD 1144-8-6-A-2  
K4LMB 819-9-14-A- -  
WB4BLJ 684-19-12-A-6

**West Virginia**  
WA8QND 49,006-256-63-A-21  
K8QYG 47,500-337-70-B-11  
WA8FMA (WA8s FMA KQX)  
72,175-367-65-A-20

**ROCKY MOUNTAIN DIVISION**

**Colorado**  
WA0CVS 128,694-610-71-A-24  
K0OER 69,795-358-66-A-18  
K0SUB 44,321-241-63-A-14  
W0BNW 26,326-134-63-B-17  
WA0DDW 22,550-05-65-B-15  
W0HEP 14,635-101-45-A-12  
W0KFX 5624-89-23-A-6  
W0HRB/0 (W4CIQ, K7VRT)  
9348-76-41-A-6

**New Mexico**  
K5FOV 94,806-460-69-A-24  
W5DQO 86,824-449-64-A-15  
W5AQOQ 32,588-199-55-A-16  
WB5ZY/5 9600-116-42-A-10



Top E. Mass. c.w. **W1WLZ** and his neat station featuring an SB-301 and 401—final score 72-K.

(Continued on page 166)

# Glen Sez:

The following list reflects the manufacturers of some of the items we have in stock, strictly for the ham.

AMECO	HY-GAIN
AMPHENOL	JOHNSON
BELDEN	MARS
BTI	MOSLEY
COLLINS	NATIONAL
CUSHCRAFT	NEWTRONICS
DRAKE	REYCO
EICO	SBE
FINCO	SQUIRES-SANDERS
GONSET	SWAN
HALLICRAFTERS	UNADILLA
HAMMARLUND	VIBROPLEX
HI-PAR	WATERS

Contact us for the best deal—trade or cash.

Glen—W1ZQA/2

## ADIRONDACK RADIO SUPPLY, INC.

185 W. Main St., Amsterdam, New York 12011

Phone: 518-842-8350

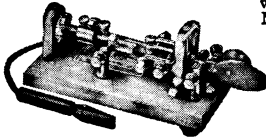
## CQ de W2KUW 5% BONUS!!

Paid over any top offer for any piece of aircraft or ground radio units, also test equipments. All types of tubes. Particularly looking for 4-250 • 4-400 • 833A • 304TL • 4-1000A • 4CX5000A et al. 17L • 51X • 390A • ARM • GRM • GRC • UPM • URM • USM units.

TED DAMES CO. • 308 Hickory St., Arlington, N.J.

## ENJOY EASY, RESTFUL KEYING

# With VIBROPLEX



Sending becomes fun instead of work with the SEMI-AUTOMATIC Vibroplex. It actually does all the arm-tiring nerve wrecking work for you. Adjustable to any desired speed. Standard models have polished Chromium top parts and gray base. DeLuxe models also include Chromium Base and red finger and

thumb pieces. Five models to choose from, priced at \$19.95 to the 24K Gold Plated Base "Presentation" at \$39.95.

## VIBRO-KEYER

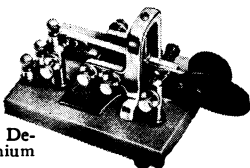
Works perfectly with any Electronic Transmitting Unit. Weighs 2½ lbs., with a base 3½" by 4½". Has Vibroplex's finely polished parts, red knob and finger, and thumb pieces. Standard model \$18.95; DeLuxe model includes Chromium Plated Base at only \$24.95.

Order today at your dealers or direct

## THE VIBROPLEX CO., INC.

833 Broadway New York, N. Y. 10003

FREE Folder



## 1966 Sweepstakes

(Continued from page 72)

<b>Utah</b>	<b>WA6URY (5 oprs.)</b>
K7RAJ 110,056-517-71-A-23	85,697-618-71-B-24
K7AQB 78,000-400-65-A-21	WB6CPE (WB6s GZM JAT
W7GXC 28,958-224-45-A-17	JJT) 62,377-468-67-B-21
WA7BMP 18,696-162-38-A-15	<b>Orange</b>
WA7EBR/7 3262-45-26-B-7	W6EIF 140,860-657-72-A-24
<b>Wyoming</b>	K6GJD/6 125,325-557-75-A-24
W7QPV 53,200-380-70-B-19	WB6LMN 15,625-116-45-A-11
W7ASD 26,220-233-57-B-12	WA6WFV 7224-86-42-B-18
W7TSM 21,750-221-50-B-17	<b>San Diego</b>
WA7EHB/7 (WA7EHB, WA9JEK)	WA6TBY (WA8KHP, opr.)
58,064-283-69-A-24	85,960-625-70-B-24
<b>SOUTHEASTERN DIVISION</b>	W6LWM 59,271-284-69-A-24
<b>Alabama</b>	W6NAT 44,826-241-62-A-20
W4USM 78,319-366-71-A-19	WB6GMM 43,998-228-63-A-20
K4FHR 49,245-336-49-A-14	WB6BKB 23,850-150-53-A-6
W4DS 18,216-132-69-B-17	W6B1EX 23,769-139-57-A-20
W4CBG 10,143-74-46-A-14	<b>Santa Barbara</b>
WA4PVK 9312-97-48-B-16	WB6LIV 40,800-214-64-A-15
W4YFN 1890-30-21-A-6	W6GEB 120-8-5-A-1
<b>Canal Zone</b>	WB6ULR (W6GEB, WB6ULR)
KZ5FX 15,548-173-46-B-9	69,440-498-70-B-24
<b>Eastern Florida</b>	WB6DXY/6 (WB6s DFV DXY)
W4PZV (WA4SVO, opr.)	7728-82-32-A-12
113,529-536-71-A-24	<b>WEST GULF DIVISION</b>
W4ETO 109,917-535-89-A-15	<b>Northern Texas</b>
W4FPM 69,156-329-68-A-17	WA5HID 146,880-680-72-A-24
WA4UFW 34,658-225-46-A-23	K2EUF/5 130,101-591-73-A-19
W4MVB 29,190-210-70-B-11	WA5ALB 85,224-432-67-A-16
W4ILE 27,010-172-51-A-15	WA5LCF 45,927-250-61-A-20
W4AHXY 21,735-158-46-A-10	K5SGE 18,424-196-47-B-15
K4FGU 20,224-128-36-A-14	K5BVM 15,696-109-48-A-12
W4HCA 14,476-155-47-B-11	WA5DAF 10,148-104-33-A-15
W4UGD 2928-61-24-B-18	W5OPV 1008-25-14-A-3
W4JQU 1008-2-2-B-1	<b>Oklahoma</b>
<b>Georgia</b>	K5JIT 38,055-217-59-A-21
K4BAI 106,624-489-72-A-23	K5JKG 16,708-155-51-B-21
WA4TWW 57,538-452-64-B-22	K5HWO 3816-154-36-A-14
W4FQQ 26,555-141-63-A-8	WA5NTI 1741-19-13-A-2
W4HBS 18,603-117-53-A-9	K5VTA (K5VTA, W5EHY, WA5EQA)
WB4AYP 18,081-126-49-A-14	73,146-505-73-B-22
K4HAV 14,283-104-46-A-10	<b>Southern Texas</b>
K4SES 32-4-4-B-2	K5LZO 180,113-808-75-A-24
K4YSB (K4s NVN TSB)	W5ULN 1008-21-16-A-2
70,119-373-61-A-24	<b>CANADIAN DIVISION</b>
K4CRS (K4CRS, WA4AIB)	<b>Maritime</b>
58,800-353-56-A-24	VE1NV 41,126-242-57-A-23
WB4CPV (4 oprs.)	<b>Ontario</b>
21,060-106-45-A-20	VE3ECI 37,783-201-61-A-21
<b>Western Florida</b>	VE3ES 23,700-158-50-A-11
W4POY (WA4YPM, opr.)	VE3FBY 20,577-182-38-A-23
31,892-236-65-B-13	VE3CCB 8055-77-35-B-7
WA4AZZ (WA4s WNB ZAZ)	VE3CKW 5472-76-36-B-7
29,238-227-44-A-20	VE3DPG 2184-42-26-B-7
<b>SOUTHWESTERN DIVISION</b>	VE3VX (5 oprs.)
<b>Arizona</b>	22,589-204-37-A-24
K7PXI 77,544-360-72-A-22	<b>Manitoba</b>
K7ZEH 31,236-278-57-A-16	VE4SD 64,837-336-65-A-18
K7UHE 18,860-109-44-A-7	VE4SC 35,122-262-66-B-22
W7CCQ/7 10,598-84-45-A-7	<b>Saskatchewan</b>
WA7BNA 7800-65-40-A-11	VE5US (VE5UF, opr.)
W7FCD 6847-85-41-B-6	65,076-481-68-B-19
W9HNF/7 1682-30-19-A-2	<b>Alberta</b>
<b>Los Angeles</b>	VE6NE 46,477-245-62-A-21
W6KPM 89,900-430-73-A-18	VE6AKV 24,168-212-57-B-12
K6VFF 69,550-538-65-B-18	VE6VV 19,656-126-52-A-7
W6AMJ 49,104-265-62-A-16	VE6MA 17,974-123-46-A-13
K6YFZ 20,436-132-52-A-14	VE6AKV 1170-26-15-A-3
W6EOO 16,996-125-43-A-15	<b>British Columbia</b>
WB6FRP 14,960-136-55-B-11	VE7FO 33,310-184-80-A-13
W6QCY 1196-46-13-B-3	VE7ANP 3924-55-24-A-5
WB6IQI 11,880-120-33-A-5	VE7BRV 113-13-3-A-3
W6LS (W6DDB, opr.)	<b>Yukon-N. W. T.</b>
6165-137-40-A-7	VE8BB 31,040-246-64-B-16
WB6SST 2205-52-21-A-12	
W6KHK 1368-30-16-A-7	
WB6NPP 1196-46-13-B-3	
WB6DHG 270-10-9-A-1	
K6BPC (K6QPH, W6FNE)	
88,760-634-70-B-24	

In case you missed the score above, our picture "guess who" candidate is VE8BB!

ARRL thanks the following amateurs for submitting their logs for checking purposes: C.W.: WB4BXQ W4JUK K4VGI WA5LFC W4TAFQ W7WYH W9YAC W0JZV W6TRZ; Phone: W2BLL WB2THL W5BWK K6AM W6ARXB/6 W8VUV W9EWC (W9AQW, opr.) VE6AAV VE7AXJ.

QST

# SWITCH TO SAFETY!

