

IN a half-dozen years of watching the various contests engulf the Communications Dept., this reporter has never seen anything approaching the 25th Sweepstakes avalanche. It began with the October *QST* preliminary announcement which, on reaching the ARRL membership, precipitated a flood of requests for forms and rules interpretations. November 3, the Monday before the starting gun, 300 requests for log sheets were received, Tuesday 60, Wednesday over 100. Two ladies devoted their energies exclusively to getting the sheets mailed, handling some 600 orders that week of Nov. 3-7, including last minute telephone callers (San Francisco, Los Angeles, Chicago, etc.) begging for rapid service. It was a rough go.

For posting 235,790 points and 1296 contacts, W4KFC (left) receives 21½-inch trophy from President W3EIS at recent Potomac Valley Radio Club meeting. W3EIS made the presentation on behalf of W3GJY, who donated this Raymond R. Rosenberg (W3NCJ) Memorial Award to the top scorer in the 25th Sweepstakes.



Three guesses who the top Four was! Cutting loose with 1296 QSOs and a blazing 235,790 pointer, W4KFC landed (1) the Virginia award, (2) the PVRClub award, (3) plaudits for top tally among the 1677 code entrants, (4) the W3NCJ Memorial Award donated by W3GJY. Vic was two QSOs and 500 points shy of W2IOP's 1298-236,246 killing in 1957, both of Larry's records thus continuing in force. Elsewhere in Four-land, Tennessee's K4LPW claims he's not getting any younger (who is?) but with 214,529 points worth fifth nationally, Mel scarcely seems doddering. K4HXF and W4BWZ rode roughshod over the Carolinas and W4WKQ, albeit slowed by queries from people who don't realize most of West Florida is on CST, won anyway. See East Florida and Georgia for nip and tuck skirmishes where, as always, the fellow who kept the most accurate dupe check, who waited to copy receipts for information sent, and who submitted the least illegible log, emerged with sheepskin to grace his walls.

K5DGI nosed out W5YDC in Louisiana last time but the tables were turned in 1958, YDC whumping up 191,625 on 14 Mc. alone, the highest one-bander of all time. Other Five-land highlights: W5FPI's powerful little 30-watter grabbed Mississippi and New Mexico's W5CK became one of two Stateside two-letter men earning a certificate. That K5LZO who triumphed in South Texas was none other than ex-KN5LZO, whose 1957 score of 37K still stands as best Novice work.

California has the Top o' the Mark, sunshine, more hams and ARRL Sections than any state, and movie stars. It also has a healthy share of contest stars, one being Sac Valley's young K6SXA. As a KN, Jim started off with the country's top score in the 1957 Novice Roundup, moved up to lead the Sixes in this SS. W6TT, a fan since the Thirties, took East Bay again 'though K6QHC pushed hard, while W6MVQ lost a toughie to W6UTV in S.C.V. Down south K6VTQ's 162,768 paced 62 L.A. entries and W6ZVQ fared famously in San Diego. Penned K6VTQ: "Please try to impress on the gang that QSZ is seldom necessary and only slows things down. Repeat *only* if requested."

Hearing a Seven, any Sweepstaker with ears

wide open for multipliers does a fast double take and cranks up the r.f. gain for a closer listen. The top W7 with 188,683, Las Vegas' W7KEV rolled his fifth straight "natural" in Nevada (maybe Baby needs a new pair of shoes) while neophytes W7YGN and W7YKT dominated Washington and Oregon. Wrote W7RGL: "A 440-watt rig, I've found, is about as handy during an SS as telescopic sights on a muzzle-loader! I'm also convinced that a traveler wandering through East Mass. couldn't go more than 17 feet in any direction before becoming snubbed up tight by assorted ham antennas. I'd have given my left arm (I'm left-handed) for a Maine come Sunday evening."

Like a highballing freight train, Ohio's W8LQA steamed over Eight-land with 198K. Meanwhile W8DUS's KW-1 was outdoing 50 Wolverines by



K6VTQ took Los Angeles entrants over the hurdles with 162,768 points and 921 contacts. President of Hughes Amateur Radio Club and ex-W2UZS, Ed favors DX, contests, experimentation and s.s.b.

kicking the gong to 111,399. And you could cry yourself a river over the grumblings at missing W. Va., except that W8s DIE FNI TDG and nine more were dishing out the section all over the place.

In W9/K9, W9RQM sprinted to a thirteenth consecutive Wisconsin victory by outmaneuvering K9CAN 198 to 187 kilopoints. Indiana belonged to W9YSX hands down and, believe it or not, somebody besides W9YFV and W9ERU finally captured Illinois.

W0YCR, as sharp an op as there is in the busi-

ness, clobbered Minnesota and the other Zeros with 209,328 points and 1153 QSOs, and ARRL Dakota Director W0PHR, coursing through 37 time-on-air hours at his habitual lightning pace, conquered South Dakota again. Out in Colorado W0CDP, testing a combination log-duplicate card-index system developed by W4KVV, found it a highly successful dupe-reducer. After defeating 35 Iowans, W0VXO weeped, "I've heard some hard luck stories but think mine takes the cake. During the contest I replaced the receiver rectifier tube and three 6146s in the transmitter.

C. W. WINNERS, 25TH A.R.R.L. SWEEPSTAKES

Section	Call	Score	Transmitting Equipment	Receiving Equipment	Bands Used
E. Penna.	W3JNQ	221,555	Ranger-813.	75A4	80, 40, 20, 15
Md.-Del.-D. C.	W3EIS	217,266	Ranger-813.	51J	80, 40, 20, 15, 10
S. N. J.	W2HDW	157,413	DX100.	HQ140X, Heath Q mult.	80, 40, 20, 15
W. N. Y.	W2SSC	185,603	Viking II.	75A3	80, 40, 20, 15, 10
W. Penna.	W3ZHQ	142,355	DX100.	SX100	80, 40, 20, 15, 10
Illinois	W9IRH	177,210	Viking II.	SX101	80, 40, 20, 15
Indiana	W9YSX	146,183	32V3.	75A4	80, 40, 20, 15, 10
Wisconsin	W9RQM	198,450	VFO-807-813.	HRO50T	80, 40, 20, 15, 10
No. Dakota	K0CNC	106,760	Heath VFO-6AG7-6146-837s.	HQ100, QF1	80, 40, 20, 15, 10
So. Dakota	W0PHR	193,550	Pacemaker-814	NC183D	80, 40, 20, 15, 10
Minnesota	W0YCR	209,328	VFO-dblrs-807s (5 separate finals).	Super Pro	80, 40, 20, 15
Arkansas	K5LNN	82,500	Ranger.	RME 4350	20, 15
Louisiana	W5YDC	191,625	VFO-811As.	NC183	20
Mississippi	W5FPI	134,959	TBS50.	S76	80, 40, 20, 15
Tennessee	K4LPW	214,529	HT32.	SX101	80, 40, 20, 15
Kentucky	K4GEZ	174,653	Ranger; Valiant.	75A1	80, 40, 20, 15
Michigan	W8DUS	111,399	KW1.	75A4	80, 40, 20, 15, 10
Ohio	W8LQA	198,378	VFO-807-813.	HQ129X, Q mult.	80, 40, 20, 15, 10
E. N. Y.	W2VCB	111,873	Ranger-4-125A.	NC183	80, 40, 20, 15, 10
N. Y. C.-L. I.	W2AYJ	166,440	DX100.	NC300	80, 40, 20, 15, 10
N. N. J.	W2DMJ	184,500	Subraco-75T; Collins VFO.	HRO5	80, 40, 20, 15, 10
Iowa	W0VXO	191,430	DX100.	HQ129X	80, 40, 20, 15, 10
Kansas	K0BJR	143,464	Ranger.	HQ170	40, 20, 15, 10
Missouri	W0TDR	142,898	DX100.	75A2	40, 20, 15
Nebraska	W0NYU	131,488	Valiant.	75A4, SX25	80, 40, 20, 15, 10
Connecticut	W1FEA	180,000	VFO-exciter-6146-7094.	SX101	80, 40, 20, 15, 10
Maine	W1DEO	71,175	Millen VFO-exciter-813.	75A3	20
E. Mass.	K1CQO	149,455	Viking VFO-Viking II.	75A1 (mech. filter)	80, 40, 20, 15, 10
W. Mass.	W1JYH	181,843	VFO-4-250A.	Homebuilt	80, 40, 20, 15
N. H.	W1HKA	80,500	VFI-AT1	RME99	80, 40, 20, 15
R. I.	W1CJH	126,913	VFO-807s.	75A1, Q5er	80, 40, 20, 15, 10
Vermont	W1QMM	91,170	VFO-6AG7-6DQ6-813.	Homebuilt (triple conv.)	40, 20, 15
Alaska	KL7CRE	55,725	Ranger.	Super Pro	40, 20, 15, 10
Idaho	W7WMO	51,699	DX35.	NC45	40, 20, 15
Montana	W7HAH	116,424	Valiant.	HQ140X	80, 40, 20, 15, 10
Oregon	W7YKT	142,375	Navigator-1625s.	HQ129X	80, 40, 20, 15, 10
Washington	W7YGN	167,353	DX100.	NC300	40, 20, 15, 10
Hawaii	KH6JJ	104,609	HT32-4-250As.	75A4	40, 20, 15, 10
Nevada	W7KEV	188,683	VFO-807-4-65A.	HQ129X	40, 20, 15, 10
Santa Clara V.	W6UTV	156,768	VFO-4X150B.	75A4	80, 40, 20, 15
East Bay	W6TT	167,760	32V3.	75A4	40, 20, 15, 10
San Francisco	K6OPI	126,000	HT32.	SX100	80, 40, 20, 15, 10
Sacramento V.	K6SXA	193,633	Ranger.	NC300	80, 40, 20, 15, 10
San Joaquin V.	W6VPV	69,513	10B-4X150As.	75A3	40, 20
No. Carolina	K4HFX	138,361	HT32.	75A4	80, 40, 20, 15
So. Carolina	W4BWZ	75,863	VFO-6AG7-6BQ6.	SX71	80, 40, 20, 15, 10
Virginia	W4KFC	235,790	VFO-807-4E27.	75A2	80, 40, 20, 15, 10
West Virginia	W8DIE	129,500	VFO-Viking II.	HRO	80, 40, 20, 15, 10
Colorado	W0CDP	133,020	Valiant.	NC300	80, 40, 20, 15, 10
Utah	W7BAJ	100,909	DX100 (modified).	75A4	40, 20, 15, 10
New Mexico	W5CK	135,720	DX100.	RME 4350	80, 40, 20, 15, 10
Wyoming	W7ABO	72,562	Viking II.	HQ150	80, 40, 20, 15
Alabama	K4HPR	87,763	DX35.	NC98	80, 40, 20, 15, 10
E. Florida	W4LVV	138,700	310B-4-250A.	HRO50T1	40, 20, 15, 10
W. Florida	W4WKQ	104,190	Lysoe 600-813.	HQ140X	80, 40, 20, 15
Georgia	K4BAI	116,830	VFO-100THs.	SP400X	80, 40, 20, 15
West Indies	KP4AOO	43,792	Ranger; BC610 (14 Mc.)	SX71	40, 20, 15, 10
Canal Zone	KZSCN	98,340	Phasemaster 2A-P400 (g.g.amp).	Collins R-390A	80, 40, 20
Los Angeles	K6VTQ	162,768	20A-4E27s.	NC300	80, 40, 20, 15, 10
Arizona	K7AIH	97,020	Sig. Shifter (modified)-829.	BC342 (conv. 15) HC10	40, 20, 15
San Diego	W6VZQ	158,330	5100.	75A3	40, 20, 15, 10
Santa Barbara	W6ULS	114,245	HT32-PL172	75A1	40, 20, 15, 10
No. Texas	W5MCT	153,810	VFO-Viking I.	NC303	40, 20, 15, 10
Oklahoma	W5YJS	114,835	32V2.	75A3	80, 40, 20, 15, 10
So. Texas	K5LZO	156,690	HT32.	75A4	40, 20, 15, 10
Maritime	W2ZRZ/V01	44,672	Pacemaker-4X250Bs.	75A4	20, 15, 10
Quebec	VE2AD	49,445	VFO-6AG7-6N7-6146-813.	NC125	80, 10
Ontario	VE3UOT	130,889	Pacemaker-Thunderbolt.	75A1, Q5er	80, 40, 20, 15, 10
Manitoba	W3MCC/V04	72,720	KWS1.	51J4	40, 20, 15, 10
Saskatchewan	VE5VP	48,454	6AG7-6L6-807s.	S76	40, 20, 15
Alberta	W7PSO/VE6	42,210	HT32.	75A3	80, 40, 20, 15, 10
B. C.	VE7JO	87,675	6AC7s-6L6-813.	Homebuilt (double conv.)	40, 20
Yukon	VE8JW	108,186	DX100.	HRO60	20, 15, 10

Murphy's Law, which loosely defined means "If anything can possibly go wrong, it will," received initial QST mention in connection with the generator-weather-equipment troubles that normally keynote Field Day participation. It must now be conceded, however, that M.L. may strike even the comparative safety of the home shack, especially during contests. How many applications can you spot in Gil's cartoon? The law also explains why your first-born, your mother-in-law, or those friends unseen in 20 years arrive while the SS is on. Other grounings appear in Soapbox.



My E-bug was sticking and I burned up two 6AH6s and an assortment of resistors in the t.r. switch. To top it off, a neighbor chopped down my 40-foot wooden tower the eve of the second week end." Another Murphy's Law tale comes from W0ATA: "Had to race to the hospital at midnight the first Saturday to beat the stork with our first-born, and my mother-in-law came the second week end to live in our small apartment. Tell the boys who had equipment failures they were fortunate." You boys who had equipment failures were fortunate.

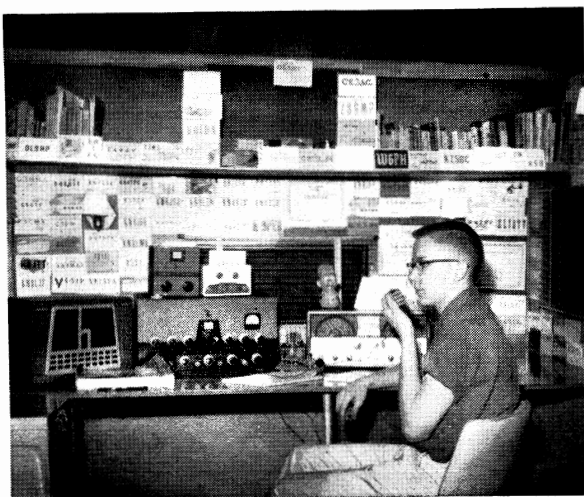
Pumping the key at University of Toronto's VE3UOT, VE2NI relied on a 750-watt Johnson rig to amass 899 QSOs and 130,889 points and lead the VE/VO bunch on both counts. VE3DSU's 115,575 and VE8JW's 108,186, latter registered in chilly Whitehorse, rounded out Canada's six-digits. Just VE3UOT and VE7CQ qualified for the perfect multiplier of 73. Clunker calls notwithstanding, Yanks W2ZRX/VO1, W3MCG/VE4, W7PSO/VE6 mopped up in three of the eight Dominion Sections.

In the Possessions, renowned contester KH6IJ seized Hawaii with 104,609 points, KZ5CN got 98,340, KL7CRE 55,795, KP4AOO 43,792.

Sorted by descending order of score, the code leaders line up as follows: W4KFC 235,790, W3JNQ 221,555, W3BES 220,643, W3EIS 217,266, K4LPW 214,529, W0YCR 209,328, W3GAU 204,583, W3GHM 201,028, W9RQM 198,450, W8LQA 198,378, W3ALB 196,370, W3FYS (multiop) 194,185, K6SXA 193,633, W0PHR 193,550, W5YDC 191,625, W0VXO 191,430, K5DGI 188,888, W7KEV 188,683, K9CAN 187,793, W2SSC 185,603, W2DMJ 184,500, W3KLA 184,051, W9LVR/9 183,230, W3TMZ/3 (he got married and moved) 183,060, W3AEL 182,880, W1JYH 181,843. For statistical kicks, howdja like to have *those* 26 in your club?

A record 104 sharpshooters landed the 73-section perfect multiplier: W1s BIH BOD DEO EOB JSM JYH UBC VG, W2s AYJ EMW FZY GND GSJ NOY PRE SSC VCB, K2s CPR IAD LGN OMT, W3s ALB BES BQA CPS DBX EIS

These two yearlings give early promise of becoming SS VIPs. At left is KN5PFL of Southern Texas, the contest's top Novice scorer with 31,608 points and 270 QSOs. On the right we have Indiana's KN9PDH whose 19,635-pointer ranked second among the WN/KN/WV clan.





In the Northwest, W7YGN (left) walked off with Washington while W7YKT (below) was performing identically in Oregon. The youngster's score-contact totals were respectively 167,353-933 and 142,375-861.



EQA EVW FYS GAU GHM GQF GRF GRS
HHK IYE JNQ KLA KT LEZ MFJ QMZ VAN
WG WJD WSF WV, K3s CBQ CIO CYA GUR,
W4s CVI GF JAT KFC LVV PRO RPZ RQR
ZM, K4s GEZ LPW, W5s DRW FPI YDC, K5s
DGI JZY, W6s HOC JVA ULS UTV, K6s GS
SXA, W7s PQE YGN, W8s DQG LQA RSW
SDJ TJQ ZJM, W9s DYG FDX GFF GRF
KLD KXK KZZ LNQ LVR/9 PZT YSX ZAB
ZRG, K9s CAN ELT, W0s CXN FZO TDR
YCR, VE3s 3UOT 7CQ, KH6IJ.

Here are the 24 Novice winners: KN3DJN
KN2JXF KN9OUU KN9PDH KN9LWV
KN0OLM KN0QMU KN5RFL KN5OPM
KN4UUH KN8KNT KN2QBD KN2POB
WV2BDV KN0PVJ KN1HTV KN1GTW
KN7CEO KN6ROU KN4SSM KN5OWH
KN4ZRU KN6TUN KN5PFL.

Soapbox

"It was interesting to see what could be done when the rig held together for a change. Put on the wrong antenna sometimes but this made no difference to KH6IJ and others as conditions were sizzling hot. Didn't beat the bushes for KP4AIO on 14 Mc. and paid for it. One Idaho in 8 SS's.

Next year I'm going to have an antenna that will singe the trees here!" — W1RAN.

"Hope I did better than in '57 when I was 1346th nationally, hi. Happy to hook W0BLZ and W3GAU for my 47th and 48th states." — K9HCP. . . . "My log represents ten hours and two minutes of the most fun I've had since becoming a ham in January, 1958. It also represents one tired fist (a straight key is no match for a bug no matter how fast you can send), one tired finger (the log had to be typed), two ringing ears and one splitting head (I've just gotta get a looser-fitting pair of earphones).

Thanks for sponsoring this worthwhile activity which builds such high-ranking proficiency." — K2KUA. . . . "500 QSOs and no Maine! My head hangs in shame. Sob." — W1MIX. . . . "Why must those long lost friends call on a guy just on those two week ends?" — K0PML. . . . "Been punching at the SS since '32 when I won in E. Pa. One of these days I'll crack the 1000 mark and retire." — W3ARK. . . . "My mother showed unprecedented interest in ham radio by asking, 'When's this thing over?'" —



W6UQC. . . . "This rat race gets better and better but even with Operating Aid Six I goofed on a few. WOE is me!" — W2WOE.

"I jumped to 82,500 points over my '57 Novice score of 426, but filling out the log was a most unpleasant task. I made 22,500 above my goal and in '59 I'll try for more. Thanks for making this wonderful contest possible." — K5LNN. . . . "Last time I had 91,433 points, recopied the station log into smooth form in many evenings of longhand, then forgot to mail it! That explains the carbon copies." — W8TJQ. . . . "What a contest! After several phone tries this is my first c.w. entry and by far the best of them all. How else can you land WAS and 69 sections in four days of one-band operation? Twenty meters was really fantastic. Hats off to the ARRL Staff for making this marvelous event possible!" — K2BWR. . . . "Last one for a while due to college. I squeezed about everything out of the 1625s but not enough to equal the all-band boys. Conclusion: It can't be done on 80 and 40 alone." — W8FNI. . . .

"Really had a ball working every state except Vermont. With 30 watts, ten and 20 came through with the western sections to improve my '57 score by 233 per cent." — K2UZJ. . . . "To keep an accurate account, I used a spare electric clock plugged in only when actually operating. I've never before heard of this method. Is it old stuff?" — W9FDX. . . . "I had hoped to work all 73 and score 100,000 and, this accomplished, I am retiring (until next year). The Frankford Radio Club issues a certificate for working 25 of its members. Checking my log for the few needed to qualify, much to my surprise I found a total of 27 of them contacted on c.w. I think Frankford should be commended for being such an active organization of top-notchers." — W3BQA.

"Thought I'd dabble around and perhaps pick up the few remaining states but soon I was completely engrossed in the spirit of the thing. The operating tactics on 14 Mc. were swell. Though a ham since '38 and a commercial air-line of five years, I learned many new tricks. A wonderful experience." — W5HHE. . . . "QRP disappointing on 20 but 40 was fabulous. Never again without perfect one-switch control." — K6BEP. . . . "Where was New Hampshire? More than doubled the '57 score due to more time and sections and better operating position but noted little QSOs-per-hour improvement. The Tattoo (a break-in system, August 1956 QST) functioned FB. Now if I can just double my score in '59 and again the year following!" — K9DWG. . . . "I found out right quick that the SS is no place for an SW-3." — K0DCF. . . . "Starting a 700-calorie diet two days before does *not* make one sharper. H.v. arc in nearby TV set killed my communications receiver good." — W6VNQ. . . . "Really enjoyable although quite a change from my Alaska operations. Surprised at the performance of the 25-watt portable rig in picking up 37 states toward WAS at the new location." — W4AMP

(ex-KL7BPK). . . "Didn't break any records or come close to the leaders but got some real operating pleasure. Expect to enjoy many more of these annual band-scamblers." — W2OWX. . . "Spent as much time filling out the sheets as operating. Would like a robot logger for the next one." — K4MUP. . . "Not much homework got done but it was the best SS in my three years of experience. Sigs clean and operators excellent." — K2QIX.

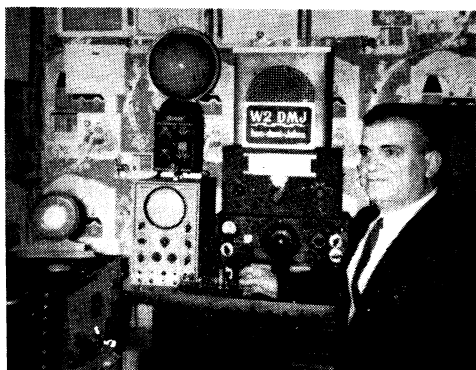
"Since '54 as WN0TDR I have participated in each SS. Working all 73 this time has given me a thrill I'll never forget. QST back issues reveal this has never before been done from Missouri so don't blame me if I throw out my chest a little. The first week end was devoted to trying for the harder sections on 15 and 20; the second, with six states and West Indies lacking, mainly to 40 where more QSOs could be made. When W3HHK told me about KV4AA I immediately shifted to 14 Mc. to land the 73rd. Eureka! A suggestion: With scores increasing tremendously each year, one week end should be ample. Surely more ops would participate except that they cannot arrange for both periods. I really believe it would improve competition among the top c.w. men." — K2LZW. [In '48 ARRL announced an SS so patterned but did a fast reversal after cries that: (1) score-contact-club totals would no longer be comparable; (2) year-to-year improvement wouldn't be measurable; (3) an ionospheric disturbance might wreck the SS for everyone; (4) chances of grabbing all sections, a popular side project, would be decreased, as would the newcomer's WAS opportunities; (5) no one need kill himself with a maximum 40 of

with v.f.o. and a 21-Mc. wire with s.w.r. better than 27:1. Now back to the relatively quiet life of chasing DX on 40 c.w." — K2UBW. . . "There should be few complaints about North Dakota activity with W0EOZ making over 500 QSOs, K0CVC 200, W9NLJ/0 'DXpeditioning' here, and my greatest effort so far. Happily, Murphy's Law was not in effect. My beautiful 50-foot pole did not collapse until the day after the SS in an ice windstorm. Operating seemed better but there is still much time-consuming, unnecessary repetition." — K0CNC. . . "Would have broken 100,000 but had to QRT the final night to study for calculus exam. These contests are rough on engineering students." — W4HBK (W4JLW op).

"When November QST arrived I immediately ordered a v.f.o. sent special delivery (bless the Heath Company for fast service!) and finished adjusting it minutes before. Still haven't put all the screws in the thing. Took an hour off for church where they had trouble with a ciphering pipe organ. Could have sworn it went 'dahdidahdit dahdahdida dididit dididit' during the sermon." — W2SXV/2. . . "Even with many difficulties, including equipment malfunctions and hooking K7AXO on his CQ DX for my 73rd, I still find the SS one of the most stimulating and challenging of the many ARRL activities." — W3WJD. . . "Heard several stations giving numbers around 1000 early Sunday p.m. so there should be some whopping, record-breaking scores. Was especially pleased to work W7BAJ and W7HRM to finish WAS and KX6CW for a new country. Now if they only QSL!" — K2DXV. . . "While everyone else was smoking and drinking coke and coffee, I went through one lb. of cookies, one lb. of mixed nuts, and 1/2 lb. of candy. Thanks to all those who repeated preambles while I munched noisily." — K6RFT. . . "Have been in nearly every one of the 25 holdings and this one seemed to be a peak for activity with operation around the clock on 14 Mc. and even 21 Mc. adding to the totals. Often before I have missed only one section but for the first time I got them all. Not the distinction it used to be, perhaps, but still very gratifying to me." — W3LEZ. . . "The goal was 100,000 with 50 watts and was going great until I took a short rest, forgot to set the alarm, and slept through the last five hours of the contest." — W1KGI.

"Since I use a kw. all year and if they don't come back the antenna has fallen down, I thought it might be more sporting to enter with my HT-18 v.f.o. which puts out 1.3 watts on 28, 14 and 7 Mc. and 1.8 watts on 21 Mc. Antennas are dipoles and 28- and 14-Mc. beams. Working with a peanut whistle calls for perseverance and an entirely different technique.

1. Look for stations just finishing an exchange and sending a fast QRZ. It's a waste of time calling CQ or answering a long CQer.
2. Answer the stronger stations.
3. Best results are obtained during the waning hours when the big guns are searching around for contacts.

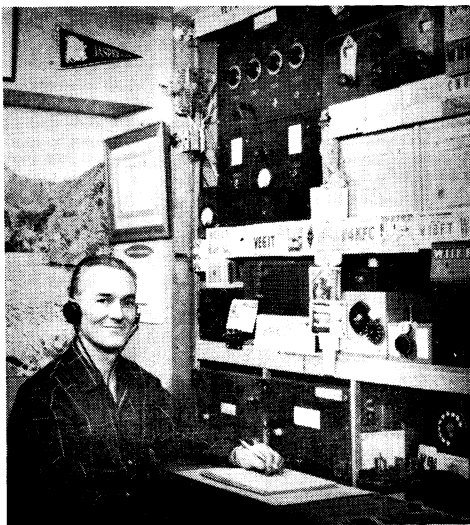


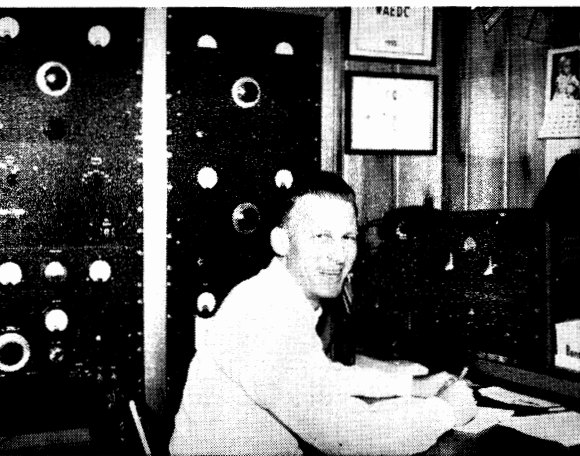
A score of 184,500 netted Northern New Jersey plaudits for W2DMJ. Frank has signed that call since '31, is active in RACES and other civil defense work, and may be heard on the bands 160 through 2, c.w., a.m., p.m. and s.s.b.

the 66 stretch usable, 26 hours remaining for sleep, chow, church, family, etc.; (6) no one has to operate 40 hours anyhow; (7) the tabulations carry a time-on-air figure enabling those unable to work full time to make their own comparisons; (8) the 'wheels', many of whom average over 40 QSOs per hour at the start, would probably win by a larger margin in a shorter contest. — W1ZDP]

"I seem to have survived my first SS. A poor receiver, a sick v.f.o., an ailing transmitter, stirred up with a great deal of school work doesn't mix into a cocktail befitting a decent score. Even managed to goof up my serial numbers. The summary is correct and true 'though (I hope). Will be improving the station and looking forward to many more SS's." — K6SXX. . . "Started out searching for all sections but simply couldn't resist answering all those CQs." — K5IDZ. . . "Everything FB except for a tube socket falling apart and a receiver bandspread failure forcing use of the 1:1 direct drive. Crystal control doesn't help a person win either. Hope to give the boys a go in the future

British Columbia went to VE7JO and his vertically-oriented station. Art doffs his hat to the many fine operators contacted, noting "speed with courtesy seemed much in evidence this year." How many OTs recognize that piece of gear in the upper right corner?





(During the opening two hours I almost lost faith. Beaucoup calls, no answers.)

Biggest thrill was raising KX6CW on ten meters. Had the time of my life." — *W3KDD*.

"Pushed for 100,000 but fell short because of various operating inconveniences. Need right and left foot pedal switches, a gross of right-handed pencils and a left-handed bug." — *W6PZH*. . . . "The rig did a respectable job but it became obvious a t.r.-switch and more comfortable operating position were required. The old back and seat got awfully tired and the call KØKWR/Ø was a real killer. Worked 45 states and 61 sections but just couldn't find Miss., W. Va. or Vermont. Hope to double the score and take Missouri in '59." — *KØKWR/Ø*. . . . "Good practice at copying through QRM but why do some Generals park in the middle of the Novice band and block the whole works? Great fun anyhow." — *KNØOLM*. . . . "A delightful SS, because I finally hit 73 sections after four years of trying. For me with a measly (by Potomac Valley Radio Club standards) 666 contacts it was a maximum effort. Some day I'm going in one of these things just for the fun of it and not because a gavel is hanging on each contact." — *W4ZM*. . . . "It was my first SS and I was amazed at the amount of interest. I will be back with a v.f.o., more power and a bug. Never again with a straight key!" — *K8LUS*. . . . "My second try in the king of all contests. Score of 43,313 was a sharp improvement over '57's 630 points." — *K1IPI*. . . . "How about an extra multiplier for us high school kids who have to explain sleeping in class to the teachers?" — *K4DAS*. . . . "W4KFC told me once that anyone who goes over 900 contacts in the SS is somewhat nuts. He was right." — *W1JYH*.

"My age is 11. Am I the youngest ham to get over 4000 points?" — *K2MIG*. [No. Ten-year-old KN2POB took the N. Y. C.-L. I. Novice certificate with a score of 10,050. — *W1ZDP*. . . . "Be back with General and v.f.o. to quadruple my score." — *KN3DJN*. . . . "Sincerest thanks for every fun-packed minute and will return in '59 to break all existing records!" — *K2IMK*. . . . "After a certain Novice had sent most of the dope I asked him for the date. He came back, 'Don't you have a calendar?'" — *W4BUU*. . . . "One crystal, five watts output, a loose antenna connection and lots of QRM = 135 points. Do I qualify for the booby prize?" — *KN8MGK*. . . . "I used the two-tube regen and the one-tube 25-watt 80-meter rig which I built from instructions in *How to Become a Radio Amateur* and one 3645-kc. crystal. I don't claim any outstanding record but it does show that something can be done with a very simple outfit. Novices, take note." — *K9JPS*. . . . "Where was W9IOP?" — *K1CCA*. . . . "Just stick around long enough and Vic (W4KFC-W1EOB-W1TYQ) tory will be yours." — *W3UE*. . . . "Recommend that smokers keep a candle burning at the operating position to permit light-up and avoid nicotine fits during QSO." — *W1GFG*. . . . "No big score but had fun trying and won't miss another. Some day hope to beat W8LQA." — *K8GWK*. . . . "Absolutely no assistance, no spotting, no logging, no telephone help, no intercom. This vehement insistence on 'no help' stems from one poor loser's increasing suspicions

WØYCR administered a 209,328-point shellacking to Minnesota contenders, became the first Zero to transcend 200K. Bill owns five completely bandswitched 150-watt finals, two 807s in each, and a very pretty fist.

that some of the brethren are not playing the game fairly. It is supposed to be a hobby." — *W3CPS*.

"This is a U. S. A.-Possessions-Canada contest. Every one of these locations can be contacted on 3.5 or 7 Mc. Why clutter up the DX bands of 14, 21, and 28 Mc. with Sweepstakes garbage? I can also well imagine what some DX stations think. No wonder you can hear them call CQ NO W. After hearing the rat race we call a contest, they think we are nuts. I'm not too sure they haven't got something there." — *W9ABI*. . . . "Once a year it doesn't hurt anybody to go wacky, so please ignore the bluenoses and set up another madhouse in '59! Suggest a multiplier of 0.5 for anyone who uses a CQ SS longer than 3×3 . These 20×10 calls drive us all batty. On second thought no 0.5 multiplier is needed. Long calls are an automatic score reducer." — *W3NNL*. . . . "Fabulous! Had a ball. Let's have more contests. How about having the SS twice per year?" — *K2PGB*. . . . "I wore right through the paint on the panel where the transmit-switch is. Never again without full break and a foot-operated v.f.o. spotter-switch." — *W3VDV*. . . . "KL7, Ark., S.J.V., Wyo., Idaho, Sask. seemed scarcest. Pulled VE5YJ off ten phone for number 73, then after all that effort worked VE5DZ an hour later on 14 Mc." — *W9KLD (ex-KL7CDF)*. . . . "What a pile-up on VE6NX!" — *W3UGV*. . . . "I don't know why but this one just didn't appeal to me. Murphy and his law didn't even show. Think I'll stick to Field Day and CD Parties." — *K9JIN*. . . . "Copying the log is a large job but necessary after the flop of the carbon-copy method last year. Too messy." — *W3GYP*.

"Never had so much fun. I made more QSOs in this SS than in my whole Novice year!" — *W2RZK*. . . . "I got all shook up when I got 589 from F8MG on 40 with only ten minutes SS time lost. Too bad France isn't a section. When I have my General and v.f.o. you will see some sparks fly, hi hi. 73 and long live the SS!" — *KN1HTV*. . . . "A good example of the power-ns.-multiplier argument is the result between WØWWA and myself. We both operated the limit, and with a kw. I had 155 more QSOs than he but was edged out with the multiplier afforded his DX-100. I'm not griping. In fact, it was so close I think the 1.25 multiplier is just about right." — *KØITF*. . . . "Two terrific week ends. Conditions, especially on the higher frequencies, were about as good as one could ever hope for." — *W9KZZ*. . . . "This year I kicked the OM (W1SAD) off the air and had the rig to myself. The score proves he is the better op so next year he gets the rig." — *Marie, W1COL*. . . . "Please place more emphasis on keeping a running check list to eliminate time lost in replying to stations already worked. Can't a penalty system be set up for such actions? Some called me four and five times. Despite my efforts, one duplicate still crawled into my list." — *WØCXN*. . . . "Spent too long digging for sections to run up a big score but got all 73 for the second time in a row, this time on 14 Mc. only. Conditions were excellent and QRM terrific, especially with my ancient receiver." — *W2EMW*.

"Boy, what QRM. 'Twas wonderful. On 40 the band was solid six deep for hours on end and don't know how some guys were able to pull 'em out of the mud. As usual the most consistent sigs were W4KFC, W3TMZ/3, W1JYH, W1EOB, W3BES, W3GHHM." — *W2GP*. . . . "Worked 72 sections the first period and without prearrangement got S.C. in the first eight minutes of the second leg, although I had a 9 p.m. sked just in case. No one runs up a score by looking for sections." — *W2FZY*. . . . "Wonderful conditions prevailed throughout. Until late the second Sunday thought Arkansas had seceded from the Union, hi." — *W1HKA*. . . . "How could I ever miss Idaho when it's so close!" — *W7LEV*. . . . "It seems that any time I try this contest we have hurricanes, plumbing or power failures, dry wells, lost antennas, poor connections in the setup, etc. This one was no exception. Had a terrific blow and lost a 45-foot 4 × 4 mast and was feeding 100 watts of

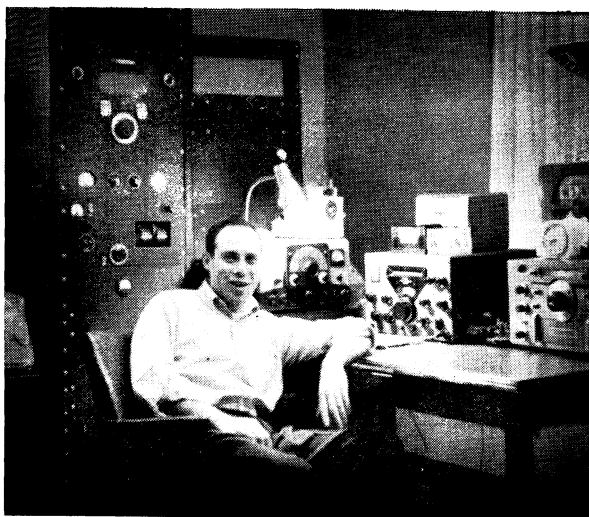
W3JNQ relaxes happily after grueling battle for Eastern Pennsylvania and Frankford Radio Club certificates and second high national tally. Licensed since '41, Dick likes contests and DX, is presently E. Pa. Section Communications Manager.

r.f. into the Atlantic Ocean for an hour. Was wondering why I wasn't making any contacts. Those pi-nets will load anything, even the ocean." — VE1AR. . . . "Guess I will never get too old to enjoy the SS. Bought a new HQ-170 the day before and learned to use it during the contest. Now a decent antenna and maybe the fellows will hear me better." — W9WEN. . . . "Swell contest but missed the clean sweep again. Where was S.C.? How about SCMs in some of these hard ones stirring up some activity?" — W6CIS. . . . "1956, 'way down in Connecticut; 1957, 12th; 1958, 4th or 5th? Worked 81 W4/K4 stations but no S.C." — W1ECH.

"The way everyone kept away from us, we must have B.O. Were there any other father-son teams on?" — KN3DUX and KN3DUY. . . . "An orchid to W3MCG/VE4 for the Manitoba multiplier and my nomination for the worst call." — W7QLH. . . . "The best yet, with good conditions and competition sharp. We should have these SS tests twice a year." — KH6HAA. . . . "Will return with new receiver and antenna farm for top score or bust!" — K8HLE. . . . "When I snagged Idaho for my 73rd it made all the time spent on 20 and 15 worth while. Pleased with the general high level of operating but some stations had bad clicks." — W2GSJ. . . . "The newcomers certainly should be commended for their fine operating. A great turnout of Novices." — W8ZAU. . . . "Got Wyoming for my 48th." — K2QYL. . . . "Since I couldn't be on the first week end, thought it might be interesting to try for 73 sections in 73 QSOs. It was!" — W6HOC. . . . "My first contest of any kind and even though I made a poor showing, judging from some transmissions heard others did worse. I was 'forced' into it because joining was the only way to get a contact. Once in there was nothing left but to continue. Believe techniques were learned which will help with the next one. While working as a General will be fine, the competition will surely be tougher. I'm game to try anyhow." — KN3DIJ. . . . "Poor planning. The XYL delivered a baby boy the second week end!" — K3CBQ. . . . "The 25-watt QRP made the going slow but got my 25 w.p.m. code proficiency sticker as a result." — W3HRE.

"It's over, thank goodness! My legs are frozen from the basement floor and there were too many interruptions. Three sick kids and I spent three days in bed with flu between week ends. 'Twas as rough a one as I ever went through. Never again, till the next SS!" — W0RCJ. . . . "One day I will finally take W.N.Y. I am 16 and have scored 100K twice already. With secrets stolen from JNQ, IOP and others, I expect to break 7 or 8 million soon." — K2MWK. . . . "Wow, what a contest! Insofar as I can tell I'm about 6th in the section and here I went and got me over 1000 QSOs. The harder you chase the Md.-Del.D.C. gang, the faster they run. Guess my only hope of winning an award is to move back to W8-land." — W3KLA (ex-W8QOL). . . . "FB conditions throughout. Now let's try to pick a comparable week end for ARRL Field Day some time." — W8OYI. . . . "Celebrated my 25th anniversary in ham radio during the 25th SS. My only suggestion is that some special dispensation be given us 'poor preachers' who find the contest coming at the busiest time in our week. Perhaps a special multiplier of ten or an extension including some midweek holiday or a letter to our congregations advocating off-time in November would help. Seriously, I enjoyed every hectic moment. I learned how rusty I was at message procedures and how unskilled at rapid sending, but rediscovered the fact that amateurs are among the most completely cooperative human beings alive. Congratulations to ARRL on this one of many outstanding contributions to the hobby. I hereby promise not to wait another 25 years before loosening up the fist and burning the midnight oil." — W8JUP.

The final tabulations of phone and club winners are now being prepared. We'll spill the beans in June QST.



C. W. SCORES

Twenty-Fifth Sweepstakes Contest

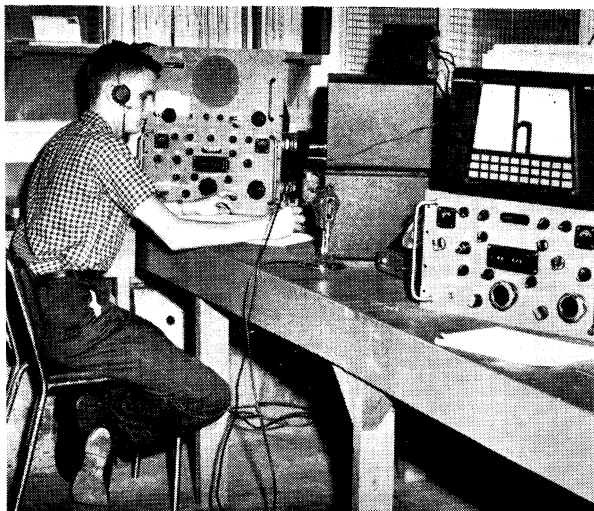
Scores are grouped by Divisions and Sections. . . . The operator of the station first-listed in each Section is award winner for that Section unless otherwise indicated. . . . Likewise the "power factor" used in computing points in each score is indicated by the letter A or B. . . . A indicates power up to and including 150 watts (multiplier of 1.25, c.w.), B over 150 watts (multiplier of 1). . . . The total operating time to the nearest hour, when given for each station, is the last figure following the score. . . . Example of listings: W3JNQ 221,555-1215-73-A-39, or final score 221,555, number of stations 1215, number of sections 73, power factor of 1.25, total operating time 39 hours. . . . An asterisk denotes Novice certificate winners in sections where at least 3 Novice logs were submitted. . . . Multioperator stations are grouped in order of score following single-operator station listings in each section tabulation.

ATLANTIC DIVISION

Eastern Pennsylvania
W3JNQ. 221,555-1215-73-A-39
W3BES. 220,643-1210-73-A-40
W3GDM. 202,029-1107-73-A-38
W3ALB. 196,370-1078-73-A-40
W3CPS. 169,543-960-73-A-38
W3HHK. 158,501-869-73-A-39
W3MWC. 146,970-834-71-A-40
W3MFW. 144,540-803-72-A-34
W3LEZ. 143,080-785-73-A-31
W3WJD. 131,856-725-73-A-37
W3KFQ. 131,400-730-72-A-35
W3EQA. 129,210-716-73-A-30
W3KTY. 128,115-702-73-A-31
W3ARK. 126,822-920-69-B-38
W3WKK. 124,100-730-68-A-39
W3GYP. 121,958-707-69-A-40
W3BQA. 110,230-604-73-A-53

Using only 14 Mc., Louisiana's W5YDC ticked off 1063 exchanges in 73 sections for 191,625 points and all-time high W5 and one-band score. Novel QSL display features SS cards sorted by ARRL Divisions and Sections.





Rare multipliers were dispersed by two former W's now hanging out in the Possessions. Left is KZ5CN, who was able to borrow those two snazzy Collins R-390 receivers for the contest. KL7CRE, the gentleman above, a Philco TechRep in Alaska, was snapped studying his SS QSLs. KZC5CN is ex-WØMVH and KL7CRE ex-W8FGB.

W3GRS...110.048- 603-73-A-31
W3EAN...109.624- 640-69-A-31
W3AFF...108.290- 641-68-A-39
W3LQO...108.275- 610-71-A-34
W3BOH...107.920- 608-71-A-32
W3SOH...107.210- 604-71-A-40
W3DOQ...105.080- 592-71-A-40
W3EYW...95.813- 525-73-A-34
W3IXN...91.770- 532-69-A-35
W3DVF...92.565- 563-66-A-39
W3VDV...91.350- 653-70-B-39
W3EER...91.120- 536-68-A-39
W3ADZ...90.880- 512-71-A-24
W3HUA...89.278- 533-67-A-40
W3DWC...77.089- 507-61-A-28
W3KDF...75.815- 514-59-A-23
W3ISE...74.800- 440-68-A-34
W3GSD...74.200- 530-56-A-35
W3NLL...73.048- 482-61-A-39
W3CSS...71.190- 452-63-A-30
K3ALD...66.000- 400-66-A-32
W3RCV...65.993- 419-63-A-31
W3YLL...63.550- 411-62-A-36
W3DBX...63.510- 348-73-A-37
W3DAO...63.350- 362-70-A-32
W3GOQ...60.545- 351-69-A-36
K3DEK...56.685- 398-58-A-35
W3CGS...55.025- 310-71-A-22
W3FHR...54.960- 344-64-A-40
W3HHK...53.763- 391-55-A-36
W3BYX...50.320- 296-68-A-31
W3NHX...46.020- 312-59-A-32
W3KVQ...42.840- 272-63-A-21
W3ADP...40.020- 276-58-A-18
K3AHT...40.000- 400-40-A-20
W3BVR...36.000- 300-60-B-21
W3FAF...34.480- 255-48-A-17
W3NOH...33.600- 280-48-A-8
K3ALL...32.400- 300-54-B-27
W3ABZ...30.600- 255-48-A-21
W3ZBN...28.373- 291-39-A-24
W3VXP...27.545- 170-65-A-25
K3CTS...26.125- 209-50-A-29
W3BHP...23.870- 175-56-A-24
W3ZCZ...23.513- 172-55-A-19
W3JPW...23.288- 207-45-A-20
W3EYF...20.396- 187-49-A-32
W3QKV...15.730- 143-44-A-10
W3MDE...14.500- 145-40-A-16
W3KFK...14.385- 137-42-A-10
W3HNE...14.256- 200-36-B-18
K3ACD...14.065- 198-29-A-21
W3JA3...14.000- 300-28-A-14
W3NCW...13.395- 114-47-A-20
K3BFW...11.503- 107-43-A-12
W3GYS...11.300- 113-40-A-12
K3DZH...11.010- 154-26-A-25
K3ATL...11.000- 139-32-A-14
K3ANU...10.750- 100-13-A-7
K3PHX...10.695- 186-23-A-10
W3TJW...8.585- 100-34-A-12
W3HKN...7.855- 121-26-A-9
W3PNL...7.350- 100-30-A-13
W3ZON...6.510- 84-31-A-6
W3HUS...6.380- 60-32-B-5
W3HIO...6.120- 61-17-A-8
K3BKL...5.575- 65-22-A-13
W3GHD...5.562- 57-23-A-9
K3BPL...3.375- 50-27-A-9
K3NDJN...3.188- 53-25-A-19
W3NPF...3.000- 75-16-A-3
W3EJC...2.960- 61-17-A-8
W3DEF...2.550- 51-20-A-8
K3AYY...2.415- 46-21-A-4
K3NDPQ...2.300- 40-23-A-14
W3CBH...2.125- 50-17-A-10
W3FKX...2.115- 47-18-A-12

W3JLL...1890- 42-18-A-6
W3QKU...1820- 55-14-A-9
K3BHX...1140- 29-16-A-6
W3DVB...1120- 28-16-A-3
K3N3DLX...1015- 37-14-A-20
K3N3CNN...940- 27-16-A-29
W3UUT...368- 21- 7-A-7
W3LWC...150- 10- 6-A-2
W3RNF...45- 5- 4-A-5
W3QMZ (K2JXX, W3QMZ)
91.798- 503-73-A-31
W3IIF (W3S IIF IKB)
67.063- 537-50-A-31
W3RBP (K2S INO OSY)
36.225- 230-43-A-21
K3N3DUX (K2N3S DUX DUY)
2205- 49-21-A-37
W3AEQ (K2S KDW KFF SCU)
2100- 41-21-A-5

Md.-Del.-D. C.
W3EIS...217.266-1192-73-A-40
W3GAU...204.583-1129-73-A-40
W3KLA...184.051-1010-73-A-39
W3TMZ/3
183.060-1017-72-A-37
W3AEL...182.880-1016-72-A-40
W3VAN...168.265-1153-73-B-39
W3MSR...166.824-1160-72-B-40
W3GRF...154.213- 845-73-A-36
W3IYE...153.483- 841-73-A-40
K3CBQ...148.829- 816-73-A-40
K3CJO...141.346- 777-73-A-40
W3DRD...140.760- 782-72-A-40
W3MFI...138.244- 758-73-A-39
K3GUR...132.313- 725-73-A-37
W3HQU...99.648- 692-72-B-40
W3IWI...85.388- 506-69-A-40
K3CYA...76.650- 420-73-A-20
W3BKE...76.250- 500-61-A-32
W3KA...75.075- 455-66-A-28
W3FRZ...58.500- 362-65-A-34
W3KZQ...57.600- 320-72-A-31
W3HVM...56.250- 375-60-A-25
W3UE...56.000- 350-64-A-33
K3CWF...50.850- 339-60-A-40
W3WVG...46.538- 255-73-A-21
W8YKM/3
44.820- 332-54-A-25
W3ZAQ...44.280- 416-54-B-31
W3ZQ...41.088- 323-64-B-20
K3B6J/3...38.360- 276-70-B-21
W3MOU...31.695- 258-54-A-26
W3PYZ...26.962- 223-61-B-20
K3ANA...19.805- 233-34-A-25
W3DCN...15.150- 202-30-A-27
W3HRE...12.420- 184-27-A-17
W3KDD...11.750- 100-47-A-14
W3CYL/3...8680- 113-31-A-22
W3YAC...70.000- 70-40-A-8
W3QC...52.570- 75-35-B-12
W3FDJ...30.888- 65-19-A-6
K3N3EST...28.200- 50-24-A-31
W3RNY...27.500- 45-25-A-6
W3WSE/3...20.43- 43-19-A-7
K3N3DDY...520- 16-13-A-22
W3LHE...388- 16-10-A-6
W3NHA...18- 3- 3-B-6
W3MTU...3- 1- 1-A-9
W3FYS (W3EYS, W6HOH)
194.185-1065-73-A-37
W3WV (W3WV, K1B8J)
157.280- 545-73-A-37
W3WSF (W3S CPB WSF)
99.280- 545-73-A-36
W3GQF (7 oprs.)
99.006- 548-73-A-40

W3EAX (W3s JWN YVQ YYC
ZCN)...58.515- 503-47-A-40
W3FQR/3 (W3s FOR GHX
HQX)...20.504- 175-47-A-15

Southern New Jersey
W2HDW...157.413- 903-70-A-40
W2SHM...151.230- 852-71-A-39
K2CPR...125.255- 680-73-A-34
K2OMT...120.450- 660-73-A-32
W2QDY...102.850- 605-68-A-37
W2EXB...99.400- 560-71-A-33
W2ILN...95.794- 591-65-A-28
K2UFE...79.670- 514-62-A-31
K2OOK...61.278- 522-47-A-29
W2DAJ...59.264- 463-64-B-29
W2SDB...54.450- 330-66-A-27
W2BUI...49.500- 300-66-A-22
K2BWR...40.279- 234-69-A-37
K2OEA...37.375- 300-50-A-24
K2MIO...35.150- 211-60-A-26
W2FXN...27.560- 210-62-A-23
W2REB...24.666- 215-46-A-13
W2APD...24.150- 210-46-A-25
K2KML...23.188- 187-50-A-24
K2BG...18.105- 142-51-A-12
W2BCV...16.760- 210-40-B-19
K2MPV...16.275- 170-37-A-21
K2ERC...12.505- 122-41-A-6
K2KFJ...12.480- 104-48-A-9
K2ZOM...12.355- 183-28-A-30
W2MEO...10.936- 142-31-A-27
W2TBD...10.260- 114-36-A-16
K2PGB...9.025- 95-38-A-20
K2BZK/2...7.800- 80-39-A-12
W2UAP...4.995- 111-18-A-11
K2AIM...2.875- 50-23-A-13
K2VQH...1.620- 36-18-A-11
W2VCN...1.120- 28-16-A-5
W2PAZ...1.060- 21-16-A-3
K2SUL...1.018- 7-11-A-6
K2UTA...1.008- 31-13-A-1
W2ISZ...220- 12- 8-A-2
W2PAU (W2S ESX PAU)
135.888- 783-70-A-39

Western New York
W2SSC...185.603-1017-73-A-34
K2MWW...131.920- 782-68-A-30
W2FXA...127.620- 712-72-A-29
W2FEB...124.373- 721-69-A-40
K2MWM...112.880- 710-64-A-39
W2GSL...112.146- 617-73-A-40
K2EVP...108.955- 615-71-A-9
W2WOE...103.106- 636-65-A-35
K2SSX...75.375- 511-60-A-32
K2UNR...73.125- 565-52-A-4
W2EMW...70.810- 388-73-A-31
W2MTA...65.845- 214-67-A-9
K2UZJ...62.963- 345-66-A-33
K2UCF...62.370- 449-59-A-31
K2JVV...51.548- 364-58-A-21
K2PKL...46.500- 304-62-A-31
W2STJ...46.480- 332-56-A-40
K2IMK...39.600- 362-44-A-35
K2DNV...35.845- 214-67-A-9
W2VJO/2...34.935- 274-51-A-23
K2VRD...29.356- 337-35-A-20
W2RHQ...26.390- 182-58-A-20
W2NZA...25.650- 285-45-B-15
K2PKK...24.049- 298-33-A-40
W2MTA...22.301- 157-37-A-14
W2TPV...20.875- 163-50-A-16
W2ZFI...18.743- 147-51-A-15
W2KKT...18.630- 162-46-A-18
K2VPB...15.258- 182-34-A-33
K2BFF...15.139- 188-33-A-15

W2CJQ...12.857- 139-37-A-15
K2DWR...12.730- 135-38-A-10
W2KRC...9.620- 148-26-A-7
K2KEC...9.400- 100-47-B-3
W2QYU...8.776- 125-33-A-23
K2TDW...7.125- 76-38-A-16
W2VOP...5.100- 85-24-A-8
K2PKI...3.939- 71-23-A-19
W2EBE...2.750- 56-20-A-4
K2KXX...2.556- 52-11-A-20
W2VBEX...1.953- 38-22-A-38
K2RTZ...1.900- 48-16-A-8
K2SSB...1.573- 37-17-A-3
K2NRX...1.445- 37-17-A-18
K2MPM...1.040- 26-16-A-4
K2KTCG...9.000- 10-A-26
K2MTW...358- 13-11-A-1
K2UCJ...105- 7- 6-A-2
W2MSN (W2MSN, K2OVO)
32.849- 279-47-A-40

Western Pennsylvania
W3ZHQ...142.355- 803-71-A-40
W3NRE...109.518- 617-71-A-35
W3YDK...95.134- 555-69-A-34
W3RNL...66.500- 380-70-A-33
W3TXQ...50.240- 378-68-B-32
W3UGV...50.408- 314-64-A-22
W3CKY...41.038- 245-67-A-20
W3NUG...32.680- 304-43-A-26
W3MEE...30.198- 260-47-A-28
K3APY...24.799- 197-51-A-26
K3BBJ...2.924- 166-44-A-26
W3JHT...13.100- 132-40-A-13
K3GPP...5.250- 60-35-A-11
K3BDT...3.768- 70-22-A-9
K3BVV...3.500- 56-25-A-6
K3BZT...2.168- 55-17-A-8
K3CJC...2.094- 55-17-A-8
W3KQD...1.275- 30-17-A-2
K3NDJ...1.160- 29-16-A-16
K3NCWB...860- 22-16-A-8

CENTRAL DIVISION

Illinois
W9IRH...177.210- 988-72-A-39
W9ZAB...159.870- 876-73-A-36
W9NFC...158.153- 891-71-A-39
W9KLD...157.224- 863-73-A-40
W9NII...151.940- 858-71-A-40
W9PZT...146.965- 802-73-A-40
W9GFF...132.810- 792-73-A-38
W9ACM...127.900- 809-71-A-38
W9JNL...141.400- 811-70-A-35
W9LNC...139.065- 762-73-A-35
W9AMU...138.600- 770-72-A-37
W9YVG...137.160- 764-72-A-40
W9BZW...105.525- 635-67-A-37
W9MAK...105.210- 585-72-A-37
K9IND...92.700- 515-72-A-40
W9VYZ...86.790- 500-71-A-27
W9ZYD...85.470- 519-66-A-31
W9ZRG...78.840- 435-73-A-25
W9NCP...72.975- 417-70-A-40
W9ARV...70.587- 500-69-B-30
W9PCQ...67.200- 408-66-A-30
W9NLF...64.103- 390-66-A-40
W9FVT...60.000- 400-60-A-27
W9WTO...54.648- 396-69-B-17
K9IDW...54.079- 315-69-A-30
K9HMY...50.706- 332-61-A-23
W9ACM...50.250- 300-67-A-18
K9AWV...49.000- 356-56-A-26
K9KYR...47.175- 318-60-A-36
W9PXX...43.323- 280-62-A-22
K9ISP...40.500- 300-54-A-32
K9IYW...34.272- 252-68-B-32

W9IDO. 34.100-248-55-A-16
W9FET. 33.790-218-62-A-26
W9REC. 32.500-190-68-A-26
W9NIU. 32.376-220-59-A-35
K9C9V. 31.813-247-50-A-40
W9DWQ. 31.775-210-62-A-16
K9CAK. 31.600-215-56-A-33
W9HPG. 25.960-176-59-A-24
K9HPC. 25.086-220-47-A-24
K9HLW. 24.625-204-50-A-19
K9HEA. 24.030-180-54-A-18
W9YDQ. 20.588-155-54-A-14
W9ZEN. 23.230-202-46-A-18
K9ECJ. 24.600-182-42-A-17
K9JOO. 21.533-160-54-A-19
K9KWB. 21.120-192-44-A-27
K9EIS. 20.475-205-42-A-19
W9VLR. 19.380-190-51-B-21
K9JBK. 18.288-194-38-A-24
K9JSY. 17.938-206-35-A-35
W8KAL/9. 17.800-183-40-A-31
W9QET. 17.600-160-44-A-16
K9JUU. 17.430-251-28-A-26
W9UKY. 17.160-220-39-B-22
K9DUA. 16.663-215-31-A-11
K9CDD. 16.476-136-49-A-16
W9LFE. 15.375-150-41-A-23
K9KWD. 15.300-182-42-A-17
K9DDT. 14.335-123-47-A-11
K9HQM. 14.041-123-47-A-19
K9BJM. 13.140-145-45-B-13
K9KIM. 12.200-126-41-A-14
K9IRP. 11.815-105-45-A-13
K9L5N. 11.800-100-47-A-19
W9UXM. 11.563-125-37-A-18
K9GSR. 11.360-145-32-A-19
W9VPD. 11.353-120-38-A-11
W9WFS. 11.221-115-49-B-5
W9AOU. 10.658-102-42-A-12
K9NQUU*. 10.200-113-40-A-29
K9IRF. 10.100-102-42-A-19
K9JLG. 8.645-125-28-A-8
K9GCI. 8.500-100-34-A-13
K9IMX. 7.718-150-21-A-17
K9NMF. 7.136-110-33-A-30
W9VCZ. 6.975-93-30-A-7
K9CVU. 6.490-121-22-A-17
K9NOCU. 5.193-76-31-A-28
K9NMBW/9. 5.175-72-30-A-39
W9HXCW. 4.785-66-29-A-7
W9YAC. 4.680-104-18-A-19
K9NMT. 4.260-82-24-A-31
K9RUT. 3.955-51-31-A-6
W9BJN. 3.949-59-27-A-18
K9JIN. 3.806-53-29-A-8
K9JDJ. 3.565-62-23-A-15
K9KZW. 3.469-95-15-A-11
W9BIZ. 3.192-67-24-B-13
W9HWN. 2.970-55-27-B-9
W9ECY. 2.963-61-28-B-5
W9YFY. 2.813-45-25-A-12
K9ZKSQ/9. 2.698-43-26-A-22
K9ORC. 2.498-51-27-A-23
W9KYW. 2.358-41-23-A-9
W9FDY. 2.178-34-26-A-7
K9NLIA. 2.154-49-19-A-20
K9IXK. 2.061-52-03-A-19
W9NGG. 1.943-56-14-A-7
K9NLOK. 1.805-43-19-A-12
K9IKX. 1.509-38-17-A-12
W9EDH. 1.395-31-18-A-4
K9BUB. 1.190-28-17-A-14
K9NMMR. 1.116-28-10-A-26
K9NLRV. 1.033-23-18-A-20
W9MYJ. 920-23-16-A-4
K9IFB. 770-22-14-A-8
W9VAV. 713-20-15-A-5
W9BIN. 690-24-12-A-5
K9IWS. 500-21-10-A-6
W9BZZ. 465-12-18-A-16
K9NKLK. 481-81-11-A-9
K9NKKUN. 450-22-9-A-22
W9TAL. 375-15-10-A-2
W9KYM. 353-23-7-A-2
W9EFZ. 236-11-9-A-4
W9TLC. 241-11-8-A-2
W9VOK. 120-10-6-B-9
W9SXL. 60-6-A-3
K9EEC. 8-2-B-1
W9NXN. 3-1-A-1
K9GVD. 3-1-A-1
K9NMD/9. 3-1-A-1

Indiana
W9YSX. 146.183-801-73-A-36
K9DWK. 126.734-757-19-A-37
K9KJD. 83.545-544-62-A-40
W9VAY. 81.015-492-66-A-30
W9PGO. 53.590-332-65-A-25
K9AUE. 53.338-365-59-A-24
W9ZTD. 43.494-333-66-B-18
K9JKO. 27.650-203-56-A-16
W9WCS. 24.644-192-11-B-21
K9NPDH*. 19.635-156-51-A-37
K9AYI. 15.275-130-47-A-13
K9C9V. 7.169-78-37-A-6
K9NMAF. 6.758-80-34-A-33
W9YDP. 4.766-62-31-A-9
K9N9B. 4.665-68-24-A-10
K9N9JO. 3.605-53-28-A-20
K9JWJ. 3.600-62-25-A-12
K9HCK. 585-21-12-A-13
K9NXLX. 495-17-12-A-5
W9YB (W5EC) K9HJK.
K9N9OC. W9GC. 126.360-704-72-A-40

K9IHG (K9S GEN IHG,
KN9QAD). 48.840-407-60-B-39
KN9LIX (K9EJR, KN9LIX)
1163-61-30-A-16

Illinois
W9RQM. 198.450-104-72-A-40
K9CAN. 187.793-1029-73-A-40
W9LVR/9. 183.230-1004-73-A-38
W9DYG. 161.980-891-73-A-40
W9KZZ. 157.224-866-73-A-36
W9WEN. 140.153-302-70-A-40
K9ELT. 132.213-725-73-A-34
W9CBE. 132.213-758-70-A-36
W9QYW. 126.735-714-71-A-39
W9UFV. 106.500-600-71-A-34
K9LQF. 105.710-596-71-A-39
W9RKP. 100.625-75-70-A-33
W9QQQ. 90.588-586-62-A-36
W9CHD. 85.750-492-70-A-25
W9KXK. 79.023-433-73-A-37
W9VCH. 74.993-457-66-A-38
W9CAS. 73.500-525-70-B-36
W9NYJ. 73.381-499-59-A-35
W9VZK. 69.143-448-63-A-38
W9PJT. 60.000-500-26-A-22
K9GDF. 51.393-337-61-A-14
K9ENB. 42.742-301-71-B-33
W9KQD. 37.606-280-55-A-9
K9HFR. 35.411-249-57-A-36
W9FBC. 30.728-241-51-A-32
K9RKB. 29.295-219-54-A-20
W9DPN. 28.560-191-60-A-10
W9MDG. 25.704-204-63-B-13
K9CBE. 24.710-172-56-A-10
W9GQO. 21.739-173-51-A-26
K9BHS. 14.950-130-46-A-10
W9VZK. 13.870-76-73-A-11
K9ECV. 14.414-55-33-A-1
W9TUU. 13.073-125-42-A-20
K9OUA. 11.560-147-32-A-26
K9GSC/9. 10.750-103-43-A-23
W9ILR. 10.628-111-39-A-18
W9BOA. 9570-119-33-A-23
W9HBB. 9045-135-27-A-11
K9NWT*. 8973-127-37-A-24
W8SIE. 7111-100-31-A-19
VE3DQB/W. 5873-84-29-A-9
W9WUQ. 5531-89-25-A-9
W9OVZ. 5239-64-33-A-4
K9EQK. 5198-100-21-A-18
W9ZLA/9. 4414-55-33-A-1
K9NLC. 4208-87-22-A-30
W9LTD. 3754-72-21-A-9
K9HLY. 2573-49-21-A-10
K9NMA. 1620-43-16-A-7
W9UDK. 946-24-17-A-4
K9JPS. 810-26-12-A-10
K9NLC. 641-31-9-A-15
K9JZE. 360-16-9-A-2
K9NMQW. 294-24-5-A-10
K9NPD. 203-17-6-A-9
K9ALP. 180-9-8-A-1
K9NMR. 26-4-3-A-3
K9GJG. 2-2-A-1
W9FDX (2 ops). 101,105-559-73-A-33
W9LYH (W5YSC, W9S LYH)
SZR). 51,380-367-56-A-9
W9BTM (W9S BTM GW S)
K9NOLM*. 5,965-300-23-A-33
W9YT (W9S YTDK VOO Z)
K9NMAV. 32,450-275-59-B-13
K9NMAV (K9N MAW MKV)
4744-77-33-A-38
W9HHX (W9S HHX UO)
K9CMP). 780-20-16-A-4

Dakota Division
North Dakota
K9CNC. 108.780-628-68-A-24
K9IVQ. 56.806-378-61-A-40
K9JEP/9. 54.290-363-61-A-39
W9YSO. 50.065-330-62-A-38
K9HCY. 43.388-287-81-A-34
W9NLJ/9. 26.000-202-52-A-16
K9NOLM*. 7565-90-35-A-20
W9CAQ. 68.930-142-61-A-23
K9ADI. 4295-64-28-A-13
K9NMPH. 788-26-14-A-24
K9NRHE. 385-14-11-A-7
South Dakota
W9PFR. 193.550-1106-70-A-37
W9SMV. 92.136-70-66-B-35
W9WUU. 5610-66-34-A-6
K9BMU. 4260-72-24-A-20

Minnesota
W9YCR. 20.325-153-73-A-40
W9TKX. 179.630-1012-71-A-40
K9IDV. 105.484-61-69-A-28
K9JUL. 57.440-306-64-A-28
K9AOU. 40.950-256-65-A-39
W9DAK. 18.200-142-52-A-16
K9LAX. 6078-76-34-A-10
K9NOMU*. 320-50-27-A-25
K9PML. 2188-36-25-A-11
K9RHO. 2000-46-20-A-20
K9OVI. 1325-27-20-A-14
K9RKF. 569-21-13-A-6
K9DFC. 513-19-10-A-2
K9LIX (K9S BIL LIX)
43,623-310-71-B-30

K9JMV (K9JMV, KN9QMU)
8373-102-54-A-15

DELTA DIVISION

Arkansas
K5LNN. 82.500-600-66-A-36
W5BYJ. 73.440-465-64-B-36
W5DRW. 56.484-312-73-A-33
K5GRT. 45.600-309-60-A-28
K5HOL. 11.341-106-43-A-13
KN5SCH. 3480-46-32-A-13
K5JER. 358-13-11-A-1
K5JBP. 106-7-37-A-22
W5YMW. 32-4-4-B-1

Louisiana
W5YDC. 191.625-1063-73-A-40
K5DGL. 188.888-1035-73-A-40
W5BUK. 111.435-648-69-A-39
W5VU. 91.050-617-60-A-31
W5WMU. 76.326-627-61-A-30
W5JTB. 69.120-395-72-A-31
W5ERR. 52.689-348-61-A-39
K2OWE/5. 45.338-268-65-A-30
K5JZZ. 42.996-294-59-A-30
K5JER. 26.055-205-54-A-27
KN5RFL*. 19-37-A-22
K5IZO. 3430-51-28-A-8
W5UDL. 2940-56-21-A-11
KN5OGU. 1138-35-13-A-27
KN5SGU. 481-22-11-A-5

Mississippi
W5FPI. 191.625-1063-73-A-40
K5IIN/5. 104.040-612-68-A-40
W5AMZ. 33.596-267-51-A-20
KN5OPM*. 16.875-163-45-A-32
KN5QNE. 6560-83-32-A-20
W4YD/5. 3625-50-29-A-11
K5OTB. 2214-70-38-B-8
KN5PYX. 1943-44-21-A-14
KN5RRG. 675-19-15-A-14
K5OTI. 488-15-13-A-4

Tennessee
K4LPV. 214.529-1176-73-A-40
W4YD. 155.252-1078-72-B-40
W4ODR*. 95.200-61-73-A-37
W4EQE. 58.860-441-54-A-38
K4ZWR. 52.763-302-70-A-35
W4SQE. 48.913-301-65-A-32
K4PHY. 33.150-256-52-A-24
W4TJI. 19.388-141-55-A-12
K4BYZ. 16.963-146-46-A-28
W4IFN. 11.448-108-53-B-3
K4NUH*. 4130-59-28-A-15
K4RSY. 3283-51-26-A-8
W4UO. 3080-56-22-A-4
KN4SXX. 1283-30-18-A-9
KN4VAM. 210-12-8-A-8

GREAT LAKES DIVISION

Kentucky
K4GEZ. 174.653-965-73-A-40
K4CVI. 129.940-715-73-A-37
W4RPZ. 126.728-688-73-B-40
W4BJB. 115.538-711-65-A-30
K4KSB. 72.600-440-66-A-33
K4KHG. 56.779-364-63-A-34
W4OMW. 33.150-222-60-A-16
W4RHZ. 31.620-145-61-A-26
K4QPI. 21.611-131-61-A-23
K4JOP. 20.250-205-40-A-12
KN4YFB. 5180-78-28-A-29
KN4UEW. 5130-62-36-A-18

Michigan
W8DUS. 111.399-798-71-B-38
W8PWQ. 103.845-602-69-A-40
W8IZS. 89.026-532-67-A-39
K8CPR. 86.275-508-68-A-34
K8KVV. 82.538-536-62-A-37
W8TJV. 83.311-457-73-A-37
W8WPC. 74.865-436-69-A-36
W8PVL. 72.105-437-66-A-36
K8DD. 68.930-142-61-A-23
K8GKX. 63.545-358-71-A-40
W8APN. 62.390-372-68-A-32
W8PXA. 56.875-439-62-A-30
K8IUZ. 52.909-409-53-A-32
W8DM. 52.250-384-55-A-26
W8PFA. 47.663-309-62-A-33
K8EPZ. 46.305-348-54-A-33
K8GUM. 41.804-316-63-A-17
W8GB. 39.300-262-60-A-21
W8UAS. 37.440-288-72-A-21
K8HZU. 36.960-353-42-A-36
W8PFA. 35.150-221-60-A-23
W8SCW. 32.400-225-72-B-13
W8GEB. 28.950-193-60-A-23
W8TKW. 26.460-196-54-A-34
K8HAH. 22.680-191-48-A-24
W8WBQ. 22.500-150-60-A-26
W8KNP. 22.360-203-27-A-33
K8LKS. 17.789-197-6-A-10
W8KTR. 20.865-214-39-A-25
W8MPD/8. 19.793-208-39-A-24
K8BGZ. 18.315-196-37-A-36
W8ZB. 18.260-203-27-A-33
W8FX. 16.000-200-36-A-17
W8EGI. 16.100-140-46-A-8

K5IYN. 14.478-149-38-A-19
W5IVK. 14.204-178-32-A-17
K8HKM. 9625-138-28-A-14
W8JXX. 7178-99-29-A-7
KN8JUG. 6560-92-32-A-21
K8DJQ. 5606-100-23-A-18
W8OAF. 4314-80-29-A-8
K8HBJ. 3190-81-19-A-11
K8JXL. 3478-55-26-A-8
W8MGQ. 3080-70-22-B-4
K8HBI. 2625-71-15-A-5
W8TRN. 2145-39-22-A-6
W8SPO. 2100-35-24-A-8
W8LEU. 263-18-6-A-1
W8LBU. 150-10-6-A-5
K8IGI (K8S GWZ IGI)
118,602-900-66-B-40
W8ZZ (W8S GEB IDJ)
3000-48-25-A-4

Ohio
W8LQA. 198.378-1088-73-A-39
W8OYL. 172.708-973-71-A-36
W8EYV. 147.143-853-69-A-36
W8ZAA. 137.518-821-67-A-35
W8YPT. 135.360-758-72-A-34
W8QHW. 131.220-730-72-A-40
W8DQC. 121.180-664-73-A-39
W8RSW. 114.063-625-73-A-36
W8ETU. 112.000-640-70-A-36
W8ZJM. 104.481-574-73-A-26
W8BOJ. 100.465-566-71-A-21
W8APC. 75.757-551-18-B-37
W8VQL. 73.865-438-68-A-34
W8LHW. 72.800-416-70-A-9
W8NWR. 71.040-445-64-A-39
K8AJV. 68.723-430-66-A-37
W8LHV. 68.085-402-68-A-39
W8DWP. 65.450-357-60-A-32
W8CSK. 62.303-351-71-A-28
K8GID. 62.300-445-56-A-36
W8UPH. 61.703-433-57-A-30
W8UMA. 60.456-458-66-B-34
K8HLE. 59.535-386-63-A-39
K8DEO. 58.800-398-60-A-40
W8HBN. 57.120-357-60-A-39
K8BXT. 52.841-348-61-A-39
W8IDM. 52.320-329-64-A-32
W8NMR. 51.765-305-68-A-37
K8BXU. 51.645-313-66-A-37
K8GWC. 51.280-325-64-A-37
K4GSU/8. 51.055-351-59-A-40
W8UJZ. 52.400-352-60-A-15
K8HGT. 48.300-276-70-A-34
K8HJF. 47.250-350-54-A-39
K8HZN. 45.220-328-56-A-33
W8EXI. 44.950-298-62-A-26
K8JPA. 40.538-352-47-A-36
W8ALP. 40.280-304-69-A-32
W8BYF. 39.825-266-60-A-18
W8VZE. 38.775-259-60-A-25
K8HVT. 36.563-230-65-A-31
W8CKK. 34.720-219-64-A-25
K8EBG. 33.313-205-65-A-14
W8BDO. 32.775-224-60-A-17
K8EKC. 30.938-225-52-A-23
K8BSM. 30.090-204-59-A-16
K8DTZ. 29.389-233-51-A-18
W8AGC. 28.820-268-44-A-21
W8NPF. 28.819-225-53-A-20
K8BKT. 27.981-304-37-A-21
W8JKB. 27.765-224-60-A-17
W8NNX. 26.740-192-56-A-17
W8MXX. 26.660-215-62-B-25
W8MAE. 25.080-152-66-A-17
K8NGG. 24.875-199-50-A-20
K8IPS. 23.888-196-49-A-20
W8SJU. 23.280-192-53-A-21
K8DHJ. 21.100-211-40-A-20
W8KMF. 21.025-145-58-A-23
W8STR. 20.520-217-38-A-18
W8RO. 20.200-203-40-A-19
KN8KNT*. 19.544-156-53-A-39

W8MOH. 19.350-180-43-A-24
W8IBX. 19.227-189-51-B-7
W8TJJ. 17.700-148-48-A-4
K8WJL. 16.211-203-33-A-25
K8EJL. 15.910-172-37-A-13
W8JAE. 15.713-210-30-A-11
W8BAP. 14.200-192-53-A-21
K8CFT. 10.595-163-26-A-13
K8HTI. 9595-101-38-A-12
K8AAG. 9000-100-36-A-9
K8IDH. 7781-128-25-A-21
W8GRG. 741-78-38-A-15
W8OYV. 713-70-14-A-9
K8DZX. 5500-100-22-A-9
K8DCP/8. 5390-70-31-A-23
K8NLEI. 5348-70-31-A-23
K8JIC. 5198-77-27-A-8
K8EDT. 3548-43-33-A-12
K8EYV. 3548-43-33-A-12
W8FRD. 2900-50-32-A-7
K8IAE. 2969-54-25-A-10
K8GUV. 2900-41-29-A-6
W8KJZ. 2280-38-24-A-12
K8NKR. 2075-43-20-A-14
W8JUP. 2074-40-21-A-9
K8DFY. 1973-40-14-A-9
K8KFV. 1890-36-21-A-9
W8BUM. 1836-34-27-B-3
K8BZF. 1700-41-17-A-12
K8BAL. 1500-40-15-A-8
W8DNC. 1300-40-15-B-4
W8DLJ. 1200-40-15-B-4
K8NLWF. 1103-34-14-A-2



Says Michigan winner W8DUS, who has a KW-1 rock-crusher and 200 confirmed: "My ham career dates back to spark and although my business has been concerned with microphones and audio products, I am a card-carrying c.w. man." Incidentally, AI is W9IOP's boss.

KNSLWV... 893- 26-14-A-12
KNSLVR... 413- 19-10-A-10
W8VUV... 289- 11-11-A-6
KNSLGB... 160- 8-8-A-6
KNSMGB... 135- 10-6-A-2
W8UNE... 95- 10-4-A-6
KSLXL... 75- 6-5-A-1
W8TLT... 70- 7-4-A-1
W8PLQ... 45- 5-4-A-1
W8SDJ (W8s IFX SDJ)
166,258- 911-73-A-39
W8MAX (W8s OHN QWI, K8s
DXW HKB IQQ)
86,460- 524-66-A-40
K8DVG (K8s CTQ DVJ)
53,750- 500-43-A-40
K8JIX (K8s EHE JIX)
51,621- 340-61-A-34
K8WBL (4 opers.)
44,220- 264-66-A-25
K8CZJ/S (W8TNN, K8CZJ)
37,700- 261-58-A-36
W8ODJ/S (W8GKB, K8s BSV
DFW)... 19,580- 178-44-A-11

Hudson Division

Eastern New York

W2VCB... 111,873- 614-73-A-39
K2VHU... 80,800- 508-64-A-34
K2EUI... 63,830- 492-52-A-32
K2QIX... 59,378- 411-58-A-24
K2MBU... 50,515- 461-45-A-40
K2TII... 46,800- 312-60-A-29
W2BAC... 45,000- 300-60-A-20
K2HJX... 39,780- 307-52-A-34
W2TER... 35,640- 298-48-A-36
W2AZO... 34,298- 269-51-A-33
W2CMI... 27,849- 167-58-A-29
W2PKY... 26,031- 113-49-A-27
K2YAZ... 25,691- 203-51-A-20
K2YXB... 23,445- 263-36-A-17
K2MKC... 15,180- 255-24-A-9
W2NOY... 14,600- 100-73-B-17
W2RZX... 9,974- 162-25-A-19
K2BIG... 9,010- 107-34-A-15
K2KUA... 8,706- 100-35-A-10
K2ZAU... 8,040- 102-40-B-7
K2QBD... 8,003- 100-33-A-40
K2GFH/2... 7,468- 103-29-A-8
K2YFI... 6,400- 73-37-A-5
W2AYM... 5,938- 66-38-A-28
W2GRI... 4,725- 70-28-A-11
K2YTK... 4,263- 55-31-A-9

WV2AKK... 2779- 63-19-A-25
K2LZW... 2704- 64-21-A-19
K2IOV... 2675- 65-20-A-7
K2PRB... 2530- 44-23-A-4
K2OHG... 2256- 49-19-A-15
K2YTD... 1950- 32-15-A-6
W2KXS... 1378- 29-19-A-5
WV2ATC... 1340- 41-16-A-10
K2NSJ... 1243- 32-14-A-25
W2GTC... 748- 23-13-A-2
W2WOH... 3- 1-1-A-1
WV2BMC... 3- 1-1-A-1

N. Y. C. - L. I.

W2AYJ... 166,440- 912-73-A-37
W2PZE... 143,640- 798-72-A-40
K2DGT... 142,625- 815-70-A-37
W2MZB... 132,300- 735-72-A-35
K2IAD... 131,400- 720-73-A-38
W2OWO... 123,506- 722-69-A-40
W2CWD... 123,090- 754-66-A-40
K2PRP... 111,860- 658-68-A-39
W2DUS... 100,595- 649-62-A-38
K2LYC... 94,180- 557-68-A-40
K2PTT... 83,160- 505-66-A-37
W2MDM... 73,932- 606-61-A-33
K2UQX... 73,080- 505-58-A-36
K2JQO... 70,150- 460-61-A-31
K2RAR... 69,694- 445-63-A-31
W2ABE... 68,407- 513-67-B-32
K2YGM... 63,075- 440-58-A-34
K2LTI... 56,875- 350-65-A-9
K2QBV... 56,719- 414-55-A-25
K2QBJ... 49,665- 301-66-A-12
W2WUM... 40,000- 250-64-A-9
K2PC... 39,139- 250-63-A-9
W2WUC... 37,969- 339-45-A-26
W2YUQ... 37,875- 253-60-A-21
K2UQT... 37,605- 327-46-A-36
W2NCG... 37,034- 282-53-A-26
K2KQH... 33,565- 277-49-A-27
K2MVC... 31,750- 254-50-A-10
K2NJA... 30,400- 304-50-B-19
W2JBQ... 29,186- 272-43-A-11
K2TVP... 28,600- 209-55-A-14
W2GPF... 28,438- 325-35-A-19
K2LFL... 27,869- 234-49-A-9
K2LXC... 24,994- 233-43-A-9
W2UBU... 24,885- 238-42-A-38
W2OBU... 24,238- 272-35-A-14
W2AIZ... 23,000- 230-40-A-25
K2UOL... 21,675- 174-51-A-19
W2III... 21,420- 180-48-A-30

W2ICO... 18,550- 130-58-A-15
K2HTX... 18,522- 189-49-B-26
W2YKQ... 15,400- 157-40-A-20
W2IRV... 15,050- 150-43-A-6
K2BUI... 14,520- 121-48-A-10
W2KGN... 14,210- 98-58-A-8
K2UTY... 13,650- 200-35-B-15
W2THZ... 13,125- 210-25-A-15
W2DQN... 12,094- 110-45-A-11
W2UAL... 12,000- 120-40-A-10
W2QFD... 11,970- 171-28-A-16
W2KVL... 11,288- 105-43-A-15
W2TNI... 10,625- 125-34-A-11
K2BH... 10,300- 103-40-A-9
K2NPOB... 10,050- 102-40-A-16
K2PCN... 9,019- 98-37-A-21
K2HGR... 8,446- 120-29-A-15
W2JGU... 7,280- 91-32-A-19
K2CJS... 6,383- 70-37-A-17
K2VNS... 6,156- 100-25-A-16
W2ESO... 5,754- 69-42-B-4
K2JLD... 5,534- 117-19-A-10
K2DHC... 5,502- 131-21-B-3
W2BIB... 5,460- 84-26-A-24
K2UMO... 5,031- 81-25-A-10
K2NPEQ... 4,615- 74-26-A-28
W2TUK... 4,080- 68-24-A-3
K2MIG... 4,000- 81-20-A-9
K2NUUV... 3,249- 64-23-A-19
W2QED... 3,126- 82-10-A-20
W2CUE... 2,480- 62-16-A-9
K2N2TG... 2,126- 50-21-A-25
K2OEG... 2,025- 45-18-A-6
W2JCA... 1,575- 30-21-A-6
W2YBK... 1,200- 31-16-A-23
W2YUQ... 1,100- 29-15-A-6
K2UYG... 1,023- 27-15-A-2
K2OFT... 938- 38-10-A-7
W2YBQK... 915- 32-12-A-19
W2OBX... 748- 23-13-A-9
W2JGQ... 630- 21-12-A-2
K2N2KF... 618- 21-13-A-17
K2N2TFB... 598- 7-7-A-7
K2N2JOK... 193- 12-7-A-11
W2MGV... 175- 10-7-A-4
K2PVC... 120- 8-6-A-1
K2N2JW... 113- 8-6-A-6
W2YUQ... 100- 9-5-A-4
K2MQJ... 98- 7-6-A-2
W2HBO... 90- 6-6-A-2
K2N2OFD... 75- 8-4-A-7
K2S8G... 63- 5-5-A-1
W2YAPW... 63- 5-5-A-1
K2ZYR... 18- 3-3-B-2
K2N2EP... 2- 1-1-A-1
W2RLM (W2RLM, K2KJL)
107,888- 694-63-A-40
W2ABC (W2ABC, ABC AHM)
63,128- 446-57-A-34
K2AAW (K2AAW, ZYR)
18,450- 164-45-A-16
K2VWVZ (K2KQH, K2VWZ)
10- 2-2-A-1

W2BWW... 25,350- 169-60-A-34
K2UBW... 24,559- 260-38-A-29
W2GBY... 21,700- 217-40-A-13
W2VMX... 21,000- 203-42-A-22
W2OPE... 18,866- 176-43-A-30
K2BJA... 18,640- 186-40-A-13
W2ABL... 16,720- 152-44-A-9
K2HRS... 15,360- 192-32-A-19
W2SXX/2... 12,900- 135-40-A-18
W2IBZ... 12,788- 166-31-A-11
W2TJD... 12,240- 136-45-B-1
K2PIM... 12,160- 128-38-A-9
K2PGH... 11,715- 143-33-A-11
W2LTI... 11,550- 200-24-A-24
W2WV... 11,408- 117-39-A-9
W2PRE... 10,658- 73-73-B-22
W2ZVW... 9,975- 105-38-A-7
W2A... 9,400- 100-74-A-9
W2RWM... 9,240- 112-33-A-9
K2VVL... 8,619- 111-39-B-12
K2DSW... 8,578- 73-47-A-5
K2TEO... 8,505- 81-42-A-19
K2ZHK... 8,443- 154-22-A-14
W2BDV... 7,719- 85-35-A-33
W2UCA... 7,088- 105-27-A-19
W2GFW... 6,698- 100-34-B-5
W2BOL... 6,030- 102-24-A-15
W2CFW... 5,735- 74-31-A-11
W2BU... 5,320- 76-28-A-5
W2BSL... 5,302- 70-27-A-19
W2PY... 3,740- 68-22-A-10
W2JIB... 3,563- 75-19-A-7
K2DNN... 3,500- 70-20-A-8
K2ZSN... 2,800- 56-20-A-20
W2VBLK... 2,678- 53-21-A-20
K2N2AB... 2,221- 44-21-A-16
W2DED... 1,640- 37-16-A-5
W2COG... 1,480- 37-16-A-22
W2LFE... 1,225- 35-14-A-9
K2RXN... 1,120- 33-14-A-5
K2DWL... 720- 22-18-A-2
K2VAB... 682- 31-11-B-2
K2NSBW... 440- 6-6-A-2
K2SXX... 288- 12-10-A-9
K2ZOGY... 280- 14-8-A-4
W2ZAPT... 254- 19-7-A-22
W2LRO (W2s LRO SJU)
53,375- 350-61-A-24
K2COY (K2s COY)
22,570- 257-37-A-31
K2NOUX (2 opers.)
480- 22-12-A-26

MIDWEST DIVISION

Iowa

W0VXO... 191,430- 1088-72-A-40
W0FZO... 149,285- 818-73-A-39
W0CXN... 141,985- 778-73-A-37
K0CXR... 116,756- 863-68-A-40
W0QCN... 96,061- 804-67-A-31
K0AZJ... 92,480- 547-68-A-34
K0HXX... 87,630- 518-69-A-39
W0GXX... 79,530- 482-66-A-25
W0BSY... 59,940- 333-72-A-31
K0L... 39,738- 275-58-A-34
K0CZQ... 3,793- 276-59-A-30
K0AAU... 34,200- 300-57-B-26
K0LPI/0... 28,669- 212-55-A-40
W0SP... 27,800- 199-56-A-22
W0TLX... 27,170- 218-52-A-28
K0BLJ... 27,120- 218-52-A-28
W0ATA... 21,420- 154-56-A-10
W0SNL... 20,825- 119-70-A-25
K0DJV... 20,460- 175-48-A-24
K0JRT... 18,900- 181-45-A-29
K0OVR... 15,803- 158-43-A-36
W9WJD/0... 14,700- 120-49-A-19
W0DSP... 7,600- 80-38-A-5
K0AVZ... 5,495- 79-28-A-12
K0PCG... 5,493- 87-26-A-7
K0PJ... 1,995- 51-19-A-7
K0PFV... 1,306- 28-19-A-21
K0NQA... 718- 22-14-A-16
K0LFA (K0s DPH LFA)
97,650- 550-72-A-35
K0CLS (W0PKH, K0s APS
CLS DLO)
76,032- 576-66-B-40
W0LNI (W0DSP, K0MTM)
50,873- 323-63-A-28
K0EIZ (W0s SMS ZAQ, K0s
EUV IEZ)
20,800- 200-52-B-9
W0YSE (2 opers.)
8550- 96-40-A-14
K0BSK (K0s BSK GTF,
K0MTL)
6435- 73-36-A-17



Meanwhile-Back-at-the-Ranch idea courtesy Lower Yakima Valley Radio Amateurs.

W9IRH got a Novice ticket in '54, rose to earn his SS spurs by clobbering 124 Illinois brasspounders in '58. Johnny eyes 200K hungrily, is serving a short Army hitch now but returns to mufli in July, "just in time to ready the station for the '59 SS." A CQ-SS wheel is in the offing.



KØGTF (KØs BSK GTF,
KNØMTL) 2903- 43-27-A-14
KNØQAI (2 oprs.) 2145- 40-22-A-24

WIASO...2550- 68-15-A-9
KNIGIF...2520- 52-21-A-18
WIOPB...880- 22-16-A-7
KILJ...77-12-A-6
WIAMY...750- 30-10-A-1
KNIHOP...263- 16-7-A-8

Kansas
KØBJR...143,464- 865-67-A-40
WØJQJ...122,850- 709-70-A-34
WØWWA...117,150- 660-71-A-40
KØITF...116,784- 815-72-B-40
WØBYV...56,608- 404-61-B-32
KØBYC...32,700- 218-60-A-19
KØIWK...24,700- 190-52-A-39
KØKMX...19,373- 185-42-A-26
KØGZP...15,125- 122-50-A-14
WØJFG...9,506- 99-39-A-20
WØCFH...8,200- 83-40-A-12
WØITO...4,556- 69-34-B-8
WØCHJ...4,016- 60-27-A-5
WØSFF...2,010- 34-24-A-8
KNØPFV...1,069- 32-15-A-18
WØQQQ (WØIPV, KØs HGJ
JHC JRO) 33,626- 280-49-A-36

Matne
WIDEO...71,175- 380-73-A-30
WYIYS...69,595- 452-62-A-1
KIGOG...26,048- 229-46-A-39
WILCX...14,985- 166-37-A-18
KIBAZ...13,213- 153-35-A-30
KIAHS...1880- 47-20-B-10

Eastern Massachusetts
KICQO...149,455- 842-71-A-40
WIBOD...140,890- 772-73-A-40
WIAQE...115,500- 660-70-A-40
WUBC...110,139- 605-73-A-33
WIMQV...109,260- 607-72-A-30
WJISM...100,101- 555-73-A-30
WIMIX...78,750- 500-63-A-36
WIEIQ...75,310- 443-68-A-32
WICOL...74,728- 421-71-A-38
WINS...62,883- 325-66-B-26
KICUD...46,894- 309-61-A-33
WILJO...42,333- 287-59-A-28
WIIWL...41,738- 316-53-A-25
WIMKW...39,300- 393-50-B-30
KICLO...37,730- 311-49-A-23
WIPSS...36,465- 215-68-A-33
WISMO...34,830- 258-54-A-13
WILPJ...31,493- 221-57-A-26
WIONP...30,148- 195-62-A-22
KIBYL...27,405- 379-29-A-24
KIAKI...24,149- 300-41-B-33
KIBYB...19,440- 162-48-A-17
WICWU...17,380- 149-47-A-21
WINJL...17,270- 157-44-A-13
WINQT...12,208- 130-38-A-22
KIDBR...9,215- 105-31-A-18
WIOBO...8,121- 24-18-A-16
WIMLI...4,495- 55-31-A-4
WICMW...3,915- 87-18-A-21
WILGO...2,850- 57-20-A-7
WIKIN...1,600- 40-16-A-4
WIMEG...1,203- 37-13-A-3
WIEIH...1,084- 24-18-A-2
WIEIF...615- 21-12-A-5
WIMMW...538- 22-10-A-5
WIOJP...455- 14-13-A-1
KIDEX...166- 10-7-A-1
KICAC...114- 8-7-A-2
KNIGND...100- 6-5-A-1
KICEH...45- 5-4-A-3
WIMX (6 oprs.) 106,780- 785-68-B-35
WIIWA (W1s DDF WAI) 97,155- 762-68-A-29
WIAF (K2s DLJ HGM,
WSHIP) 35,100- 330-54-B-22
WJIMS (W1s JMS KFF, K1s
BID BIE) 10,902- 122-46-B-25
K2KIR/1 (W1s AJ, K2KIR) 5495- 79-28-A-7

Massachusetts
WØTDR...142,808- 783-73-A-40
KØGJD...96,080- 582-66-A-40
KØJPL...79,200- 489-66-A-37
WØQWS...75,225- 447-68-A-40
KØHIM...68,000- 427-64-A-34
WØMCX...54,405- 351-62-A-32
KØKWR...48,648- 325-61-A-33
WØETV...43,039- 250-69-A-18
WØFIN...43,120- 308-56-A-28
WØARO...38,880- 288-54-A-16
KØQCC...28,275- 222-52-A-33
KØLGZ...24,840- 216-46-A-16
KØPFF...7,350- 80-37-A-16
KØPREF...6,800- 87-34-A-27
KØHOK...4,226- 81-18-A-7
WØKIT...1,900- 41-19-A-16
WØJTC...1,425- 29-20-A-7
KØHUV...523- 25-14-A-7
KØAXU (7 oprs.) 57,184- 332-69-A-39
WØEEE (6 oprs.) 43,064- 387-56-B-20
KØCQA (KØs CPN CQA) 27,650- 200-56-A-16

Western Massachusetts
KICQO...149,455- 842-71-A-40
WIBOD...140,890- 772-73-A-40
WIAQE...115,500- 660-70-A-40
WUBC...110,139- 605-73-A-33
WIMQV...109,260- 607-72-A-30
WJISM...100,101- 555-73-A-30
WIMIX...78,750- 500-63-A-36
WIEIQ...75,310- 443-68-A-32
WICOL...74,728- 421-71-A-38
WINS...62,883- 325-66-B-26
KICUD...46,894- 309-61-A-33
WILJO...42,333- 287-59-A-28
WIIWL...41,738- 316-53-A-25
WIMKW...39,300- 393-50-B-30
KICLO...37,730- 311-49-A-23
WIPSS...36,465- 215-68-A-33
WISMO...34,830- 258-54-A-13
WILPJ...31,493- 221-57-A-26
WIONP...30,148- 195-62-A-22
KIBYL...27,405- 379-29-A-24
KIAKI...24,149- 300-41-B-33
KIBYB...19,440- 162-48-A-17
WICWU...17,380- 149-47-A-21
WINJL...17,270- 157-44-A-13
WINQT...12,208- 130-38-A-22
KIDBR...9,215- 105-31-A-18
WIOBO...8,121- 24-18-A-16
WIMLI...4,495- 55-31-A-4
WICMW...3,915- 87-18-A-21
WILGO...2,850- 57-20-A-7
WIKIN...1,600- 40-16-A-4
WIMEG...1,203- 37-13-A-3
WIEIH...1,084- 24-18-A-2
WIEIF...615- 21-12-A-5
WIMMW...538- 22-10-A-5
WIOJP...455- 14-13-A-1
KIDEX...166- 10-7-A-1
KICAC...114- 8-7-A-2
KNIGND...100- 6-5-A-1
KICEH...45- 5-4-A-3
WIMX (6 oprs.) 106,780- 785-68-B-35
WIIWA (W1s DDF WAI) 97,155- 762-68-A-29
WIAF (K2s DLJ HGM,
WSHIP) 35,100- 330-54-B-22
WJIMS (W1s JMS KFF, K1s
BID BIE) 10,902- 122-46-B-25
K2KIR/1 (W1s AJ, K2KIR) 5495- 79-28-A-7

Nebraska
WØNYU...131,458- 785-67-A-40
WØWLO...114,576- 651-71-A-40
WØURB...108,268- 700-62-A-38
KØMRS...63,975- 439-60-A-32
WØDW...33,999- 231-59-A-23
KØLOK...5,880- 76-32-A-13
KØGVM...1,812- 16-12-A-5
KØOBF (WASO, KØOBF) 62,434- 509-62-B-36

Rhode Island
WICJH...126,919- 718-71-A-39
WISMU...17,250- 700-67-A-40
KICBR...61,045- 421-58-A-4
WIRFQ...56,883- 376-61-A-38
WILWA...47,453- 333-57-A-19
WIIWQ...44,888- 289-63-A-19
KIBYB...43,318- 275-63-A-37
WIFIL...39,345- 325-61-B-30
KIBRJ...11,224- 110-41-A-27
WILQJ...9,690- 163-24-A-19
KIDKF...5,890- 76-31-A-6
WICMH...5,858- 71-33-A-2
WITNH (K2OYJ, K4AKP, K9AOX) 57,640- 610-62-B-1
WISKT (WIIWQ, KIEJI, WØQQG) 69,818- 487-58-A-40

NEW ENGLAND DIVISION

Connecticut
WIFEA...180,000-1007-72-A-39
WIBIH...179,945- 990-73-A-40
WITYQ...172,441- 978-71-A-40
WIAWV...171,110- 120-71-B-40
WIRAN...142,568- 1007-71-B-40
WIMHE...126,000- 700-72-A-24
WILVQ...122,500- 703-70-A-36
WIECH...113,710- 667-68-A-38
WIEKE...111,720- 798-70-B-38
WIDHU...108,325- 670-65-A-38
WIZDP...107,920- 600-71-A-29
WITUW...104,198- 638-66-A-38
WITST...90,000- 500-72-A-30
KICCA...78,461- 615-61-A-28
WIVG...71,613- 491-73-B-27
WIMBX...68,395- 451-58-A-36
WIFGF...56,115- 387-58-A-28
KIAJG...55,080- 460-48-A-38
KIAAC...50,460- 348-58-A-19
WITX...46,434- 327-71-B-17
WIBDI...37,570- 221-68-A-17
WIMWB...35,350- 316-45-A-20
WICHR...32,630- 252-52-A-15
WINJM...25,300- 230-44-A-11
WIADW...24,300- 203-48-A-14
WIEFW...22,945- 177-52-A-13
WIZJJ...16,370- 126-52-A-20
WIFJD...15,812- 65-65-A-4
KICSH...14,026- 116-49-A-21
KNIGHT* 13,018- 132-41-A-38
KNIGMS...11,495- 105-44-A-20
WIIYM* 7,410- 74-26-A-3
KNIGRJ...4,689- 65-31-A-21
WIRFJ...4,079- 70-73-A-27
KIGUD...3,623- 63-23-A-29
WIIUV...3,480- 48-29-A-11
WINLM...3,344- 44-38-B-8
KNIEBY...2,915- 53-22-A-11

Vermont
WIQMM...91,170- 507-72-A-34
KIGBF...65,859- 450-59-A-40
K2HVN/1 58,125- 375-62-A-30
WISWX/1 20,425- 190-43-A-1
KNIHCO/1 5,366- 20-11-A-22
K4KGZ/1 (KNIHCO, K4KGZ) 7670- 111-28-A-22

Western Massachusetts
WIBOD...140,890- 772-73-A-40
WIAQE...115,500- 660-70-A-40
WUBC...110,139- 605-73-A-33
WIMQV...109,260- 607-72-A-30
WJISM...100,101- 555-73-A-30
WIMIX...78,750- 500-63-A-36
WIEIQ...75,310- 443-68-A-32
WICOL...74,728- 421-71-A-38
WINS...62,883- 325-66-B-26
KICUD...46,894- 309-61-A-33
WILJO...42,333- 287-59-A-28
WIIWL...41,738- 316-53-A-25
WIMKW...39,300- 393-50-B-30
KICLO...37,730- 311-49-A-23
WIPSS...36,465- 215-68-A-33
WISMO...34,830- 258-54-A-13
WILPJ...31,493- 221-57-A-26
WIONP...30,148- 195-62-A-22
KIBYL...27,405- 379-29-A-24
KIAKI...24,149- 300-41-B-33
KIBYB...19,440- 162-48-A-17
WICWU...17,380- 149-47-A-21
WINJL...17,270- 157-44-A-13
WINQT...12,208- 130-38-A-22
KIDBR...9,215- 105-31-A-18
WIOBO...8,121- 24-18-A-16
WIMLI...4,495- 55-31-A-4
WICMW...3,915- 87-18-A-21
WILGO...2,850- 57-20-A-7
WIKIN...1,600- 40-16-A-4
WIMEG...1,203- 37-13-A-3
WIEIH...1,084- 24-18-A-2
WIEIF...615- 21-12-A-5
WIMMW...538- 22-10-A-5
WIOJP...455- 14-13-A-1
KIDEX...166- 10-7-A-1
KICAC...114- 8-7-A-2
KNIGND...100- 6-5-A-1
KICEH...45- 5-4-A-3
WIMX (6 oprs.) 106,780- 785-68-B-35
WIIWA (W1s DDF WAI) 97,155- 762-68-A-29
WIAF (K2s DLJ HGM,
WSHIP) 35,100- 330-54-B-22
WJIMS (W1s JMS KFF, K1s
BID BIE) 10,902- 122-46-B-25
K2KIR/1 (W1s AJ, K2KIR) 5495- 79-28-A-7

Alaska
KL7CRE...55,725- 381-60-A-39
KL7CUR...18,105- 142-51-A-4
KL7KFB...15,921- 139-47-A-20
KL7CTB (KL7s CND CTB) 7254- 93-39-B-1

Idaho
W7WMO...51,699- 354-59-A-31
K7CPC...10,660- 115-41-A-23

Montana
W7HAH...116,424- 825-72-B-40
W7VGG...64,756- 401-65-A-31
W7KFE...59,278- 440-73-A-40
W7TPE...59,710- 430-56-A-29
K2OUK/7...6525- 89-30-A-1

Oregon
W7YKT...142,375- 861-68-A-40
W7TML...122,751- 890-69-B-39
W7OFC...93,060- 750-66-A-39
W7JHA...79,730- 469-68-A-40
W7KMU...64,080- 405-64-A-34
K7AWH...51,170- 303-68-A-32
W7LTL...30,800- 224-55-A-27
W7KFE...15,921- 139-47-A-20
K7BBD...12,758- 122-41-A-16
K7BBD...11,020- 116-38-A-17
K7NCSN...590- 37-8-A-17
W7DMC (9 oprs.) 26,500- 213-53-A-33

Washington
W7YGN...167,353- 933-73-A-40
W7HMQ...160,020- 889-72-A-40
W7LEV...150,938- 864-70-A-40
W7PQE...129,393- 714-73-A-40
W7AJS...119,510- 705-68-A-40
W7RGL...82,524- 600-69-B-34
W7JC...73,308- 413-71-A-1
K7CHH...73,185- 437-68-A-39
W7VRO...70,703- 431-66-A-19
W7AVY...58,240- 366-64-A-36

Western Massachusetts
WIBOD...140,890- 772-73-A-40
WIAQE...115,500- 660-70-A-40
WUBC...110,139- 605-73-A-33
WIMQV...109,260- 607-72-A-30
WJISM...100,101- 555-73-A-30
WIMIX...78,750- 500-63-A-36
WIEIQ...75,310- 443-68-A-32
WICOL...74,728- 421-71-A-38
WINS...62,883- 325-66-B-26
KICUD...46,894- 309-61-A-33
WILJO...42,333- 287-59-A-28
WIIWL...41,738- 316-53-A-25
WIMKW...39,300- 393-50-B-30
KICLO...37,730- 311-49-A-23
WIPSS...36,465- 215-68-A-33
WISMO...34,830- 258-54-A-13
WILPJ...31,493- 221-57-A-26
WIONP...30,148- 195-62-A-22
KIBYL...27,405- 379-29-A-24
KIAKI...24,149- 300-41-B-33
KIBYB...19,440- 162-48-A-17
WICWU...17,380- 149-47-A-21
WINJL...17,270- 157-44-A-13
WINQT...12,208- 130-38-A-22
KIDBR...9,215- 105-31-A-18
WIOBO...8,121- 24-18-A-16
WIMLI...4,495- 55-31-A-4
WICMW...3,915- 87-18-A-21
WILGO...2,850- 57-20-A-7
WIKIN...1,600- 40-16-A-4
WIMEG...1,203- 37-13-A-3
WIEIH...1,084- 24-18-A-2
WIEIF...615- 21-12-A-5
WIMMW...538- 22-10-A-5
WIOJP...455- 14-13-A-1
KIDEX...166- 10-7-A-1
KICAC...114- 8-7-A-2
KNIGND...100- 6-5-A-1
KICEH...45- 5-4-A-3
WIMX (6 oprs.) 106,780- 785-68-B-35
WIIWA (W1s DDF WAI) 97,155- 762-68-A-29
WIAF (K2s DLJ HGM,
WSHIP) 35,100- 330-54-B-22
WJIMS (W1s JMS KFF, K1s
BID BIE) 10,902- 122-46-B-25
K2KIR/1 (W1s AJ, K2KIR) 5495- 79-28-A-7

Western Massachusetts
WIBOD...140,890- 772-73-A-40
WIAQE...115,500- 660-70-A-40
WUBC...110,139- 605-73-A-33
WIMQV...109,260- 607-72-A-30
WJISM...100,101- 555-73-A-30
WIMIX...78,750- 500-63-A-36
WIEIQ...75,310- 443-68-A-32
WICOL...74,728- 421-71-A-38
WINS...62,883- 325-66-B-26
KICUD...46,894- 309-61-A-33
WILJO...42,333- 287-59-A-28
WIIWL...41,738- 316-53-A-25
WIMKW...39,300- 393-50-B-30
KICLO...37,730- 311-49-A-23
WIPSS...36,465- 215-68-A-33
WISMO...34,830- 258-54-A-13
WILPJ...31,493- 221-57-A-26
WIONP...30,148- 195-62-A-22
KIBYL...27,405- 379-29-A-24
KIAKI...24,149- 300-41-B-33
KIBYB...19,440- 162-48-A-17
WICWU...17,380- 149-47-A-21
WINJL...17,270- 157-44-A-13
WINQT...12,208- 130-38-A-22
KIDBR...9,215- 105-31-A-18
WIOBO...8,121- 24-18-A-16
WIMLI...4,495- 55-31-A-4
WICMW...3,915- 87-18-A-21
WILGO...2,850- 57-20-A-7
WIKIN...1,600- 40-16-A-4
WIMEG...1,203- 37-13-A-3
WIEIH...1,084- 24-18-A-2
WIEIF...615- 21-12-A-5
WIMMW...538- 22-10-A-5
WIOJP...455- 14-13-A-1
KIDEX...166- 10-7-A-1
KICAC...114- 8-7-A-2
KNIGND...100- 6-5-A-1
KICEH...45- 5-4-A-3
WIMX (6 oprs.) 106,780- 785-68-B-35
WIIWA (W1s DDF WAI) 97,155- 762-68-A-29
WIAF (K2s DLJ HGM,
WSHIP) 35,100- 330-54-B-22
WJIMS (W1s JMS KFF, K1s
BID BIE) 10,902- 122-46-B-25
K2KIR/1 (W1s AJ, K2KIR) 5495- 79-28-A-7

Western Massachusetts
WIBOD...140,890- 772-73-A-40
WIAQE...115,500- 660-70-A-40
WUBC...110,139- 605-73-A-33
WIMQV...109,260- 607-72-A-30
WJISM...100,101- 555-73-A-30
WIMIX...78,750- 500-63-A-36
WIEIQ...75,310- 443-68-A-32
WICOL...74,728- 421-71-A-38
WINS...62,883- 325-66-B-26
KICUD...46,894- 309-61-A-33
WILJO...42,333- 287-59-A-28
WIIWL...41,738- 316-53-A-25
WIMKW...39,300- 393-50-B-30
KICLO...37,730- 311-49-A-23
WIPSS...36,465- 215-68-A-33
WISMO...34,830- 258-54-A-13
WILPJ...31,493- 221-57-A-26
WIONP...30,148- 195-62-A-22
KIBYL...27,405- 379-29-A-24
KIAKI...24,149- 300-41-B-33
KIBYB...19,440- 162-48-A-17
WICWU...17,380- 149-47-A-21
WINJL...17,270- 157-44-A-13
WINQT...12,208- 130-38-A-22
KIDBR...9,215- 105-31-A-18
WIOBO...8,121- 24-18-A-16
WIMLI...4,495- 55-31-A-4
WICMW...3,915- 87-18-A-21
WILGO...2,850- 57-20-A-7
WIKIN...1,600- 40-16-A-4
WIMEG...1,203- 37-13-A-3
WIEIH...1,084- 24-18-A-2
WIEIF...615- 21-12-A-5
WIMMW...538- 22-10-A-5
WIOJP...455- 14-13-A-1
KIDEX...166- 10-7-A-1
KICAC...114- 8-7-A-2
KNIGND...100- 6-5-A-1
KICEH...45- 5-4-A-3
WIMX (6 oprs.) 106,780- 785-68-B-35
WIIWA (W1s DDF WAI) 97,155- 762-68-A-29
WIAF (K2s DLJ HGM,
WSHIP) 35,100- 330-54-B-22
WJIMS (W1s JMS KFF, K1s
BID BIE) 10,902- 122-46-B-25
K2KIR/1 (W1s AJ, K2KIR) 5495- 79-28-A-7

Western Massachusetts
WIBOD...140,890- 772-73-A-40
WIAQE...115,500- 660-70-A-40
WUBC...110,139- 605-73-A-33
WIMQV...109,260- 607-72-A-30
WJISM...100,101- 555-73-A-30
WIMIX...78,750- 500-63-A-36
WIEIQ...75,310- 443-68-A-32
WICOL...74,728- 421-71-A-38
WINS...62,883- 325-66-B-26
KICUD...46,894- 309-61-A-33
WILJO...42,333- 287-59-A-28
WIIWL...41,738- 316-53-A-25
WIMKW...39,300- 393-50-B-30
KICLO...37,730- 311-49-A-23
WIPSS...36,465- 215-68-A-33
WISMO...34,830- 258-54-A-13
WILPJ...31,493- 221-57-A-26
WIONP...30,148- 195-62-A-22
KIBYL...27,405- 379-29-A-24
KIAKI...24,149- 300-41-B-33
KIBYB...19,440- 162-48-A-17
WICWU...17,380- 149-47-A-21
WINJL...17,270- 157-44-A-13
WINQT...12,208- 130-38-A-22
KIDBR...9,215- 105-31-A-18
WIOBO...8,121- 24-18-A-16
WIMLI...4,495- 55-31-A-4
WICMW...3,915- 87-18-A-21
WILGO...2,850- 57-20-A-7
WIKIN...1,600- 40-16-A-4
WIMEG...1,203- 37-13-A-3
WIEIH...1,084- 24-18-A-2
WIEIF...615- 21-12-A-5
WIMMW...538- 22-10-A-5
WIOJP...455- 14-13-A-1
KIDEX...166- 10-7-A-1
KICAC...114- 8-7-A-2
KNIGND...100- 6-5-A-1
KICEH...45- 5-4-A-3
WIMX (6 oprs.) 106,780- 785-68-B-35
WIIWA (W1s DDF WAI) 97,155- 762-68-A-29
WIAF (K2s DLJ HGM,
WSHIP) 35,100- 330-54-B-22
WJIMS (W1s JMS KFF, K1s
BID BIE) 10,902- 122-46-B-25
K2KIR/1 (W1s AJ, K2KIR) 5495- 79-28-A-7

Sweepstakes

(Continued from page 63)

Sacramento Valley

K6SXA...193,633-1061-73-A-40
K6RFT...12,555-143-36-A-26
K6SXX...6738-124-22-A-30
W6DWJ...1620-36-18-A-14

San Joaquin Valley

W6VPV...69,513-419-67-A-36
W6BVM...41,844-260-65-A-12
W6BYH...31,560-263-60-B-8
K6LZU...25,740-201-52-A-35
K6ZJY...24,180-202-48-A-38
W6QXF/6...20,800-130-64-A-31
W6VMB...12,146-120-41-A-16
W6UWF...6705-149-18-A-30
KN6ROU*...1890-43-21-A-16
KN6RQM...585-20-12-A-18
KN6QDQ...5-2-1-A--

ROANOKE DIVISION

North Carolina

K4HXF...138,361-780-71-A-34
K4RID...90,000-500-72-A-31
K4LXO...66,953-430-62-A-40
K4MWB...58,179-386-61-A-25
K4DNW...56,070-356-63-A-27
W4LYV...52,675-305-70-A-19
W4ATC...43,549-277-63-A-19
K4LXT...23,130-268-36-A-19
K4JSC...13,490-145-38-A-16
W4AGI⁹...10,638-115-37-A-5
KN4SSM*...5250-65-35-A-24
KN4YEP...2220-41-24-A-15
KN4ZIW...615-21-12-A-14
W4BUU...88-7-7-A-4
K4VNY (K4s RAF VNY)
70,640-448-64-A-37

South Carolina

W4BWZ...75,863-436-70-A-39
K4MUP...59,933-393-61-A-29
W4IFT...9785-104-38-A-23
W4JA...5015-59-34-A-6

Virginia

W4KFC...235,790-1296-73-A-40
W4CXA...176,400-981-72-A-38
W4RQR...176,113-967-73-A-40
W4PNK...174,150-970-72-A-34
W4JAT...166,075-911-73-A-40
K4GMX...154,530-865-72-A-39
W4BZE...138,450-780-71-A-27
W4JFE...135,975-777-70-A-38
W4GF...135,324-743-73-A-37
W4TKR...125,825-721-70-A-40
K4CAX...123,750-750-66-A-37
W4ZM...121,545-666-73-A-31
W4PRO...110,504-610-73-A-39
W4YHD...110,141-639-69-A-21
W4NH...108,850-622-70-A-31
W4SNH...107,565-607-71-A-39
K4OAG...75,826-622-62-B-30
W4WBC...73,780-434-68-A-30
K4MXF...68,000-400-68-A-36
W4HZZ...57,936-409-71-B-25
W4CQI...57,900-387-60-A-23
W4JUQ...57,566-456-51-A-22
W4MXU...48,705-383-51-A-31
W4FZG...46,373-344-54-A-18
K4CQM...45,600-325-57-A-30
K4JVE...42,953-252-69-A-14
W4THM...37,932-327-58-B-24
W4JUJ...33,040-207-64-A-15
K4ELJ...31,894-203-63-A-16
K4IKF...27,430-211-52-A-14
VE2BX/W4
23,306-170-55-A-15
W4DAK...21,884-218-41-A-21
W4AMP...21,490-154-56-A-20
W4YE...20,300-204-40-A-9
K4REH...17,078-150-46-A-12
W4SXE...13,324-105-51-A-10
W4ATQ...11,440-143-32-A-15
W4FJ...9600-80-48-A-18
K4AK...9113-81-45-A-6

W4LK...8820-90-49-B-7
K4QET...7508-137-22-A-22
K4QXS...6860-100-28-A-8
K4RBQ...6265-95-28-A-29
W4NHX...5720-88-26-A-10
K4TFL...5240-69-32-A-18
K4EJG...2520-36-28-A-8
K4KOX...1700-43-16-A-4
K4OJZ...1369-37-15-A-6
K4PRO...495-18-11-A-2
W4WSF...75-6-5-A-1
K4PYR...19-4-3-A-1
W4APM (W4s APM TFX)
13,195-182-29-A-12
W4TFX W4s APM TFX)
1688-45-15-A-4

West Virginia

W8DIE...129,500-740-70-A-35
W8FNI...75,881-533-57-A-34
W8TDG...61,223-454-54-A-35
K4CQA/8...26,898-188-58-A-25
K8KFK...24,026-230-43-A-24
K8JPV...15,631-162-41-A-19
K8ELF...14,250-150-38-A-18
W8BZY...13,110-115-46-A-11
K8GWT...2250-45-25-A-13
K8LUS...1781-49-15-A-12
W8UYR...782-23-17-B-2
K8JLF (K8s BRM JLF)
35,880-277-52-A-24

ROCKY MOUNTAIN DIVISION

Colorado

W0CDP...133,020-739-72-A-32
W0ANA¹⁰...105,315-627-68-A-36
W0WME...90,390-525-69-A-36
K0IIT...80,058-530-62-A-40
K0EDH...59,850-399-60-A-26
K0IUI...47,600-298-64-A-29
K0EDK...45,600-304-60-A-17
K0IUB...41,114-341-61-B-33
K0GEU...38,055-258-59-A-32
W0MYB...34,618-228-61-A-27
K0EDG...21,450-156-55-A-24
K0KLB...19,910-185-44-A-28
W0BON...19,676-150-53-A-12
K0ITW...13,579-135-41-A-15
K0LMD...10,395-103-42-A-17
W0SGG...5160-48-43-A-9
KN0PGM...1193-31-18-A-11
K0HXC...688-25-11-A--
KN0RGY (KN0s PNM RGY)
11,250-100-45-A-27
KN0PVI (KN0s PVI RQG)
3278-64-23-A-13

Utah

W7BAJ...100,909-570-71-A-38
W7JQU...86,540-561-62-A-24
K7AXO...26,898-207-53-A-21
K7BNK...20,670-158-53-A-22

New Mexico

W5CK...135,720-755-72-A-37
W5NTM...60,803-365-67-A-35
K5LXE...37,515-250-61-A-24
K5QBV...21,621-178-49-A-20
K5IQA...10,064-99-41-A-22
KN5OWH*...5720-80-32-A-28
KN5QIN...5040-71-32-A-23
W5LMI...3713-55-30-A-6
KN5QCP...1235-27-19-A-11

Wyoming

W7ABO...72,562-511-71-B-34
W7HRM...45,480-379-60-B-22
W7BHH...35,650-234-62-A-26
W7SQT...455-14-13-A-2
KN7CRL (K7DTD, KN7CRL)
18,590-166-52-A-40

(Continued on page 178)

SOUTHEASTERN DIVISION

Alabama

K4HPR... 87,763- 505-70-A-35
W4KAC... 67,650- 518-66-B-39
K4RJM... 62,914- 442-57-A-35
K4IWI... 27,913- 193-58-A-23
K4LNA... 19,916- 208-52-B-27
W4WOG... 16,231- 125-53-A-10
W4PPK... 9928- 105-38-A-10
KN4ZXX... 1530- 37-18-A-21
W4CIU... 176- 11- 8-B- 3
K4MMO K4s AMO SSB)
81,765- 474-69-A-35
K4UEE (K4UEE, KN4YKL)
32,873- 250-52-A-29

Eastern Florida

W4LVV... 138,700- 761-73-A-40
K4DAS... 138,006- 793-71-A-40
W8DJN/4120,420- 670-72-A-40
W4VPD... 116,100- 645-72-A-40
K4QHG... 68,288- 535-64-B-37
W4BTO... 66,833- 400-67-A-26
K4JLD... 55,360- 350-64-A-39
K4KDN... 47,600- 340-56-A-18
K4MZN... 18,988- 155-49-A-19
K4UHH... 14,263- 149-38-A-39
K4QPT... 13-633- 144-38-A- 7
K4RJJ... 11,788- 115-41-A-10
W4MW... 10,725- 116-39-A-13
W4EFV... 6795- 76-36-A-10
K4HOK... 5160- 67-32-A- 7
KN4ZRU*... 5119- 62-35-A-27
KN4ZRT... 3535- 55-28-A-15
K4DRO... 2600- 40-26-A- 2
W4SAS... 2400- 49-20-A-11
KN4ZDW... 900- 24-15-A-17
W4JO... 63- 5- 5-A- 1
K4TGY... 3- 1- 1-A- 1
K4NCN (W4KXV, W0GHX)
97,808- 629-63-A-40
W4DFU (8 oprs.)
54,150- 365-60-A-35
K4VRW (K4s PVH VRW)
2970- 52-24-A-10

Western Florida

W4WKQ... 104,190- 604-69-A-34
W4JLW¹¹... 98,140- 717-70-B-40
K4MFI... 21,895- 151-58-A-18
W4AXP... 66- 6- 6-B- 2

Georgia

K4BAI... 116,830- 836-70-B-40
W4HBO... 116,375- 665-70-A-35
K4MOF... 97,625- 550-71-A-31
W4BXV... 90,304- 525-69-A-24
W4ZKU... 90,000- 625-72-B-40
K4EWG... 82,626- 503-71-A-27
K4ATM... 79,950- 492-62-A-40
K4PEG... 42,415- 250-68-A-34
W4LG... 38,088- 281-69-B-32
W4LDD... 32,603- 207-63-A-21
K4EEK... 30,674- 243-53-A-16
K4KZP... 19,736- 140-57-A-16
K4HIG... 17,438- 155-45-A-18
W4BFR... 16,730- 120-56-A-11
W4GGD... 13,228- 143-37-A-15
K4PIC... 11,858- 140-34-A-14
K4LAX... 10,120- 95-44-A-20
K4OLQ/4... 853- 34-11-A- 7
K4QYW... 701- 26-11-A- 9
KN4VSV... 20- 4- 2-A- 1
K4SVT (W4WKP, K4s JBY
SVT UWL VGO)
84,056- 532-68-B-40
W4BKJ (W4BKJ, WKP, KN4-
ZMR)... 7725- 108-30-A-17
K4UJS (K4UJS, KN4YAU)
450- 15-12-A-13

West Indies

KP4AOO... 43,792- 392-56-B- -
WP4API... 210- 13- 8-A- 6

Canal Zone

KZ5CN... 98,340- 600-66-A-31
KZ5LC... 7613- 88-35-A-12

SOUTHWESTERN DIVISION

Los Angeles

K6VTQ... 162,768- 921-71-A-35
K6CEF... 159,218- 897-71-A-39
K6CTV... 156,060- 871-72-A-40
W6WII... 150-520- 850-71-A-40
W6SBB... 146,965- 865-68-A-37
K6GLC... 117,540- 663-72-A-39
K6IBE... 112,778- 690-66-A-40
K6CYX... 100,013- 572-70-A-37
K6OJV... 92,300- 520-71-A-40
W6NKR... 91,501- 517-71-A-36
W6HAL... 86,310- 619-70-B-40
W6PZH... 85,520- 536-64-A-40
W6JNX... 72,864- 529-69-B- -
K6JSD... 69,550- 428-65-A-36
K6ELQ... 65-410- 436-62-A-31
K6TVL... 62,744- 520-62-B-23
W6SRT/6... 57,333- 323-71-A-32
K6JBV... 53,925- 366-60-A-17
W6OIV... 49,613- 329-63-A-28
K6MSG... 42,701- 291-59-A-33
K6GLS... 41,118- 312-66-B-28
K6UYK... 40,413- 265-61-A-25
K6SHJ... 40,350- 270-60-A-20

K6BEP... 32,373- 283-46-A-35
K6PXQ... 31,070- 241-52-A-29
W6VIV... 29,754- 260-58-B-38
K6KYH... 26,000- 202-52-A-20
W6UQC... 24,360- 233-42-A-32
K6VDK... 19,020- 161-48-A-10
K6CQF... 18,596- 131-57-A- 8
W6OEO... 16,819- 153-45-A-28
K6HSQ... 11,320- 143-32-A-35
W6VRJ... 10,850- 156-28-A-21
W6CIS... 10,368- 72-72-B- -
K6ZDL... 9345- 89-42-A- 7
K6YNB... 9258- 92-46-A- 7
KN6TUN*... 8740- 94-38-A-17
W6WDH... 8400- 105-32-A- -
W6ACL... 7553- 80-38-A-11
W6UFJ... 6219- 100-25-A-31
K6CDW... 6160- 77-32-A- 7
K6VVD... 5981- 73-33-A-11
K6QQB... 5184- 75-29-A-14
KN6PVS... 4169- 64-29-A-24
K6MKG... 3648- 57-32-B-14
W6UGU... 3120- 55-24-A-11
K6QIP... 2560- 64-16-A- 8
K6BFZ... 1980- 33-24-A- 5
W6MHS... 1978- 44-23-B-13
WV6BDQ... 1420- 40-16-A-24
W6RPX... 543- 31- 7-A- 4
KN6SJH... 525- 15-14-A-12
K6DNG... 523- 19-11-A- 4
K6TZY... 481- 18-11-A- 6
K6RVE... 315- 14- 9-A- 8
K6PUS... 90- 6- 6-A- 4
K6ICS... 30- 4- 3-A- 1
K6PZN... 14- 7- 1-B-12
KN6SWI... 8- 3- 1-A-12
KN6LFO... 5- 2- 1-A- 5
K6QEH (3 oprs.)
64,268- 392-66-A-34
K6KIV (K6s KIV QIP)
5100- 68-30-A- 9
WV6AFA (W6UGU, WV6AFA)
3- 1- 1-A- -

Arizona

K7AIH... 97,020- 596-66-A-40
W7ZMD... 93,365- 526-71-A-36
W7SAT/7... 36,304- 231-63-A-18
W7GNL... 13,178- 127-42-A-18

San Diego

W6ZVQ... 158,330- 892-71-A-30
W6JVA... 138,883- 765-73-A-40
W6VNQ... 79,170- 609-65-B-35
K6VZA... 75,438- 427-71-A-36
WA6CEZ... 55,263- 322-70-A-35
K6BCG... 44,688- 275-65-A-35
K6OLS... 21,890- 199-55-B-16
K6EQL... 18,143- 123-59-A- 9
K6LLE... 10,865- 113-41-A-15
K6LLI... 6425- 130-20-A-16
WV6AJB... 5458- 64-37-A-19
K6CEQ... 4530- 76-24-A- -
K6EJK... 3113- 83-15-A-16
W6YZD... 128- 8- 8-B- 1

Santa Barbara

W6ULS... 114,245- 785-73-B-33
W6JTA... 51,480- 315-66-A-33
W6DTY... 41,669- 283-59-A-26
K6OFO... 10,800- 96-45-A-21
W6OUL... 4000- 50-32-A- 6
KN6TTS... 140- 8- 7-A- 1

WEST GULF DIVISION

Northern Texas

W5MCT... 153,810- 862-72-A-40
W5GNE... 76,456- 475-65-A-37
W5HCL... 75,311- 537-57-A-25
W5TPZ... 62,134- 401-63-A-40
W5DLM... 45,744- 283-65-A-29
K5IDZ... 41,250- 250-66-A-40
W5RVI... 38,640- 278-56-A-22
K5GHP... 31,590- 235-54-A-24
K5PXV... 27,560- 209-53-A-37
K5IRQ... 12,656- 116-45-A- -
K5GFM... 10,593- 112-38-A-12
W5LR... 5981- 73-33-A- -
KN5QJH... 1350- 33-18-A-11
K5LSY... 525- 18-12-A- 4
K5DRC (K5s ATD DRC)
91,375- 540-68-A-40

Oklahoma

W5YJS... 114,835- 683-68-A-34
K5IZM... 112,158- 644-67-B-39
K5MRJ... 97,536- 557-71-A-40
W5LW... 76,680- 426-72-A-30
K5ETM... 27,030- 215-51-A-27
W5YKB... 13,892- 151-46-B-12
KN5OKY... 5005- 80-28-A-21
W5LPL... 2013- 35-23-A- 8
KN5OJD... 875- 32-14-A-22

Southern Texas

K5LZO... 156,690- 872-72-A-40
W5WZQ... 146,340- 819-72-A-40
K5BSZ... 93,600- 520-72-A-26
W5LGG... 78,633- 443-71-A-19
K5JZY... 77,563- 431-73-A-40
W5HHE... 71,190- 452-63-A-31
K5JEH... 63,315- 404-63-A-40
W1PVF/5... 37,520- 269-56-A-30
KN5PFL*... 31,608- 270-47-A-40
K5LWL... 27,623- 191-58-A-29
W5DB... 9068- 117-31-A-12

(Continued on page 180)

K5DJK....8000- 80-40-A-13
 KN5QFM...1918- 37-21-A-10
 W5QLT....1643- 37-18-A- -
 KN5QJR....1073- 49-11-A-30
 KN5RQI....1065- 37-12-A- -
 W5NIY....413- 15-11-A- -
 KN5QPX....270- 12- 9-A-10
 W5MPE.....40- 4- 4-A- 2

CANADIAN DIVISION

Maritime

W2ZRX/VOI
 44,672- 349-64-B-24
 VE1EP....1088- 34-16-B- 1

Quebec

VE2ADD...49,445- 322-62-A-25
 VE2AZN...44,530- 293-61-A-35
 VE2OL....42,750- 285-60-A-20
 VE2AWR...14,513- 219-27-A-27
 VE2AHW...3115- 45-28-A- 7
 VE2AJD...2970- 51-24-A-12
 VE3ARA....2050- 42-20-A- 6
 VE2PZ....1575- 35-18-A- -
 VE2AZI....120- 8- 6-A- 5

Ontario

VE3UOT¹²
 130,889- 899-73-B-40
 VE3DSU...115,575- 670-69-A-35
 VE3AGX...85,994- 699-62-B-40
 VE3EAM...75,600- 500-63-A-21
 VE3EU...70,875- 405-70-A-28
 VE3DH...67,519- 416-65-A-34
 VE3ACB...61,880- 364-68-A-34
 VE3DBP...53,760- 454-48-A-35
 W0AIH/VE3
 48,320- 303-64-A-17
 VE3AVS...38,860- 290-67-B-28
 VE3MI...29,160- 324-36-A-31
 VE3AWE...28,767- 335-43-B-16
 VE3DDU...20,329- 209-39-A-13

VE3DDP...17,786- 140-51-A-19
 VE3YV....17,776- 202-44-B-21
 VE3GI....17,360- 112-62-A-10
 VE3DPG...15,800- 159-40-A-17
 VE3EIL...12,960- 108-48-A-18
 VE3AUS...7,140- 103-28-A-15
 VE3CLF...4,620- 90-21-A-14
 VE3DVT...2,420- 44-22-A-14
 VE3DYJ...1,424- 34-17-A- 6
 VE3EGV...1,340- 34-16-A-11
 VE3CNK...1,251- 34-13-A- 9
 VE3DQL...413- 15-11-A- 2
 VE3ENL (VE3s BHS ENL)
 22,748- 171-54-A-16

Manitoba

W3MCG/VE4
 72,720- 610-60-B-24
 VE4BK...20,719- 166-51-A-27
 VE4WI....1,760- 32-22-A- 6

Saskatchewan

VE5VP....48,454- 330-59-A-19
 VE5DZ....28,520- 242-62-B-29

Alberta

W7PSO/VE6
 42,210- 272-63-A-24
 VE6QV....30,495- 216-57-A-27
 VE6CX....26,036- 204-53-A-30
 VE6UW...15,060- 126-48-A-15
 VE6TY....7,438- 85-35-A-11

British Columbia

VE7JO....87,675- 501-70-A-36
 VE7CQ....81,578- 448-73-A-30
 VE7LB....32,900- 236-56-A-14

VE7AGN...26,505-233-57-B-20

Yukon/N.W.T.

VE8JW...108,186- 613-71-A-35

¹ WA2AAX, opr. ² W7UHK, opr. ³ W3AFD, opr. ⁴ K2JVB,
 opr. ⁵ W7YQA, opr. ⁶ W1WPR, opr. ⁷ Hq. staff, not eligible for
 award. ⁸ W1FSJ, opr. ⁹ W4YZC, opr. ¹⁰ W0FVD, opr. ¹¹ W4HBK,
 opr. ¹² VE2NI, opr.

Non-competing: W3CDQ, W4ISS, W7PUV, W8s KJK TZO,
 W9QGR, W0KTR, KL7PI, VE1AR.

From May 1959 QST © ARRL