

September V.H.F. Party - Final Results

THE 290 logs turned in following the V.h.f. Party Sept. 15th and 16th represent a slight falling-off from recent totals for the spring and fall contests. This was to be expected, in view of dismal weather and subnormal propagation conditions over most of the country. But interest in v.h.f. contests has reached a point now where even the worst the weatherman can cook up for us fails to dampen enthusiasm appreciably.

Highlights of the party reported last month, mentioned the increase in 50-Mc. activity. At an all-time low of 12 per cent participation in the last contest before the band was opened to use by Technician licensees, 6 has bounded back to major status in the v.h.f. contest picture. The number of contestants reporting use of the 50-Mc. band has increased steadily since the June, 1955, party, with the September contest showing 58 per cent of contestants active on the band. The 2-meter band continues to lead the way, however, with 78 per cent operating there. 220 shows a slow but steady growth, with 13 per cent of the stations using it. The 420-Mc. band was used by 8.5 per cent. There was scattered activity on 1215 and 10,000 Mc. as well. Here's how the final tabulation shapes up:

SCORES

In the following tabulation, scores are listed by ARRL Divisions and Sections. Unless otherwise noted, the top scorer in each section receives a certificate award. Columns indicate the final score, the number of contacts, the section multiplier, and the bands used. A represents 50 Mc.; B, 144 Mc.; C, 220 Mc.; D, 420 Mc.; and E, 1215 Mc. or higher. Multiple-operator stations are shown at the end of each section tabulation.

ATLANTIC DIVISION

E. Pennsylvania

W3TDF	2584-136-19-B
W3ARW	1738-76-22-ABCD
W3DEX	660-60-11-AB
W3HYO	642-107-6-B
W3WED	582-97-6-B
W3CLQ	536-67-8-B
W3TXO	450-50-9-A
W3MFT	225-25-9-B
W3MDO	108-27-4-B
W3UQJ	92-23-4-A
WN3GVV	75-15-5-B
W3OWP	36-18-2-B
W3BNR	22-11-2-B
W3KX/3	(3 oprs.)

12,600-301-40-ABCD

W3LXM/3	(W3s BPZ BYF HPL LXM TEB)
	1895-113-15-AB
W3TF	(W3s HPD RVU TF UCA VUF)
	1122-102-11-B
W3ZRQ/3	(W3s CMA FLJ ZRQ)
	70-35-2-B

Md.-Del.-D.C.

W3TOM	2106-117-18-AB
W3CGV	1462-82-17-ABCD
W3GKP	1442-103-14-B
W3OTC	294-42-7-A
W3LCC	144-24-6-A
KN5GW/3	115-23-5-B

KN5GXZ/3	95-19-5-B
W3EAW	92-23-4-A
WN3FYL	39-13-3-B
W3WAF	14-21-2-A
W3PGA/3	(4 oprs.)
	2790-150-18-ABC
W3BBG	(W3s BBG YQO)
	804-67-12-AB

S. New Jersey

K2ITP	2790-155-19-AB
K2DCF	1580-130-12-B
K2IVX	1220-122-10-B
W2ZUL	1089-99-11-AB
K2HOD	624-48-13-B
W2BLV	585-42-13-BD

Western New York

W2ALR	891-81-11-B
W2ERX/2	867-63-9-B
W2QNA	305-61-5-AB
W2RXG	248-31-8-B
W2EQO	126-21-6-B
W2QY	66-22-3-B
W2GBN	56-14-4-B
K2AJN	41-21-2-A
W2SJV	28-14-2-B
K2DYC	28-28-1-A
W2UPT/2	(W2s JGJ RZP UPT)
	2877-137-21-AB
K2DLW/2	(K2s DLW QLH)
	231-01-23-ABC
K2IXJ	(W2S GU K2s DBB IXJ)
	1230-82-15-AB
K2CEH/2	(W2s ALL JTE K2s CEH HIT)
	1155-77-15-AB
K2ERQ	(W2L M KZSRU)
	328-41-8-A
W2TQY/2	(6 oprs.)
	129-43-3-B

W. Pennsylvania

W3HFF/3	462-42-11-AB
W3TFP	66-25-3-A
W3HZU/3	(11 oprs.)
	962-74-13-AB
W3KWH	(W3s RXT WHY ZPZ ZUZ)
	432-54-8-AB

CENTRAL DIVISION

Illinois

W9DRN	1391-100-13-ABCD
W9QKM	1320-120-11-AB
W9OBW	1030-102-10-ABD
W9EET	774-86-9-AB
W9USL	558-61-9-ABC
W9PBP	490-70-7-B
W9YLY	490-70-7-B
W9ULF	480-80-6-AB
W9KLD	476-68-7-B
W9GLR	427-61-7-B
W9ROS	372-93-4-A
W9PPA	270-54-5-B
W9CT	256-64-4-B
K9BBK	240-60-4-B
W9BOZ	225-45-5-B
W9BTK/9	162-42-4-B
W9ADO	60-20-3-B
W9IFA	45-18-3-B
W9KCW	44-22-2-B
W9XC	20-10-2-B
W9DUP	(KN9s DEM DUD)
	25-51-5-B
W9AML	(6 oprs.)
	52-13-4-B

Indiana

W9KLR	2754-151-18-ABC
W9SWH	504-84-6-A
W9MHP	312-61-6-AB
W9ORW	228-38-6-B
W9OVL	195-36-5-AC
W9BUM	84-21-4-B

Wisconsin

W9JFF	312-78-4-A
W9TC	195-39-5-B
K9AKI	128-32-4-A

W9UZ	116-29-4-B
W9GXC	90-30-3-A
W9DSF	50-10-5-AB
W9PTV/9	9-9-1-B
W9UJM	4-2-2-B

DAKOTA DIVISION

Minnesota

W9RO	46-23-2-A
W9HGH	45-15-3-B

DELTA DIVISION

Tennessee

W4HHK	216-27-8-AB
-------	-------------

GREAT LAKES DIVISION

Kentucky

W4VLA	660-66-10-AB
K4HTO	24-8-3-A

Michigan

W8RMH	2310-151-15-ABC
W8NOH	1000-100-10-AB
W8URO	684-76-9-AB
W8PT	600-75-8-B
W8ARR	330-55-6-AB
W8FEU	300-60-5-AB
W8JCY	144-45-5-B
W8HJR	140-35-4-A
W8SDK	117-39-3-A
W8CBM	108-36-3-B
KN8AYR	108-36-3-B
W8BGY	91-27-3-B
W8GYU	78-26-3-B
W8RFW	76-19-4-A
W8TIN	76-19-4-A
W8DDO	75-25-3-AB
W8MMS	54-27-2-B
W8SEP	62-31-2-B
KN8AQ	60-30-2-B
W8UML	9-9-1-A
W8CQU	(2 oprs.)
	680-68-10-AB
W9SEK/8	(W9s RPH SEK K9s APQ CTT)
	513-57-9-AB

Ohio

W8LPD	2235-144-15-ABC
W8LCL	1469-113-13-B
W8JSW	1035-115-9-AB
W8HQK	774-86-9-AB
W8TPL	666-74-9-AB
W8LIZ	546-78-7-B
W8NEE	350-60-5-AC
W8NAF	280-70-4-AB
W8INQ	272-67-4-AC
W8SVU	264-66-4-A
W8EDS	228-38-6-B
W8IPT	220-55-4-B
W8LOF	198-33-6-B
W8PLQ	168-42-4-AB
W8WUP	148-37-4-AB
W8BMO	132-44-3-AB
W8LCT	112-31-3-AB
W8VZE	68-22-3-B
W8RXM	22-22-1-B
W8RLY	10-10-1-B
W8IFZ	1-1-1-B
W8SPG	(W8s BVJ SFG SRW)
	1843-97-19-AB

HUDSON DIVISION

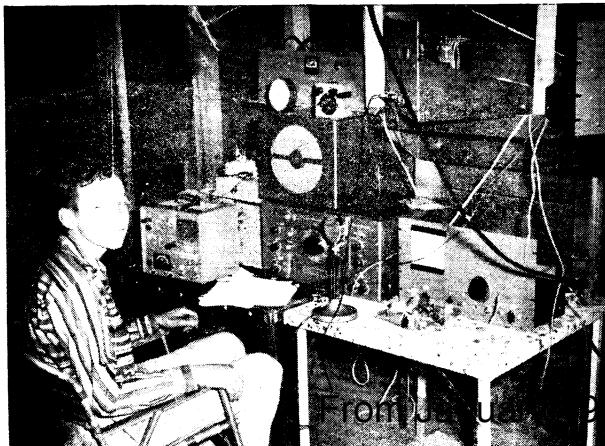
Eastern New York

K2HPN/2	3380-126-26-ABC
W2WHX	1040-80-13-B
K2LBI	155-31-5-A
K2OAV	80-40-4-A
W2HBC/2	(6 oprs.)
	5746-122-26-ABC
K2JQY/2	(K2s CIB JQY)
	1364-124-11-A

N.Y.C.-L.I.

K2JLR	1170-117-10-B
K2DDK	837-93-9-B

(Continued on page 144)



Two-meter operating position of W7PUA/7, Pack Mountain, Wash., top-scoring station in the Northwestern Division in the September V.h.f. party. WN7CNN is the operator.

QST for

Results

(Continued from page 52)

K2MBY ³ ...	693-	63-	11-A	W2IN.....	112-	16-	7-AB
W2YHP...	287-	41-	7-B	W2AOD...	84-	21-	4-B
W2IYS...	210-	30-	7-B	K2AZT...	33-	11-	3-A
K2GYR....	165-	33-	5-B	W2TUK...	8-	8-	1-B
K2OIL....	128-	32-	4-A	K2IEJ/2 (W2MFN K2IEJ)			
W2JBQ....	126-	21-	6-B		5278-	203-	26-AB

(Continued on page 146)

From January 1957 QST © ARRL

N. New Jersey

W2PRF... 8091-272-29-ABC
W2BVU/2. 5600-187-28-ABCD
W2CXY... 4473-213-21-B
W2ONV... 2970-198-15-B
W2DZA... 750- 39-15-ABC
W2CBB... 728- 52-14-B
W2NYY... 558- 62- 9-B
K2ICE... 372- 62- 6-B
K2KIB... 340- 85- 4-B
K2DIG... 144- 17- 6-AC
W2AFU/2 (W2s MQT VIM
K2s PZV RWF SBG)
1650-150-11-AB
K2GLQ (K2s GLQ JLQ)
1060-106-10-AB

MIDWEST DIVISION

Iowa

W0USQ... 240- 30- 8-AB
W0SMJ... 44- 11- 4-AB

Missouri

W0IHD... 480- 60- 8-AB
K0BVL... 46- 23- 2-A
W0WKG... 32- 16- 2-A
K0DOK (W0TGC K0s DOK
DTP DUV)
440- 88- 5-AB

Nebraska

W0WRT... 28- 14- 2-B

NEW ENGLAND DIVISION

Connecticut

W1PHR... 2000-100-20-AB
W1OS... 924- 66-14-B
W1RMU... 312- 52- 6-B
W1SUZ... 180- 18-10-A
W1BDI⁴... 100- 25- 4-B
W1KFS... 81- 27- 3-B
W1KHM... 5- 5- 1-A
W1QAK/1¹ (W1s EYF KAC
PTG QAK)
6048-224-27-AB
W1LGE/1 (multioperator)
3874-144-26-ABC
W1ORS (6 oprs.)
800- 80-10-B
W1AW⁴ (W1s QIS WPR)
312- 39- 8-AB

Maine

W1TAM... 728- 54-13-ABCD
W1KID/1(W1s AHE AQE
AQR EHF KID)
5267-220-23-ABC

E. Massachusetts

W1HOY... 2388-199-12-A
W1OOP... 2254- 91-23-ABCD
W1JSM... 1807-139-13-B
W1KBN⁵... 1548-129-12-AB
W1FZJ... 1159- 61-19-AB
W1HDQ/1⁴ 994- 71-14-AB
W1AAI... 670- 67-10-B
W1VYS... 650- 50-13-AB
W1PYM... 522- 58- 9-B
W1BDF/1. 261- 29- 9-B
W1AQE... 135- 27- 5-B
W1ZAW... 72- 12- 3-C
W1MEG... 24- 12- 2-B
W1AHE... 18- 9- 2-B

W. Massachusetts

W1RFU... 8954-225-37-ABC
W1VNH... 4089-137-29-ABCD
W1MNG... 1540- 77-20-AB
W1ZWL³... 1200-100-12-A
W1HUN... 264- 33- 8-A
W1STR... 252- 36- 7-B
W1DRZ... 55- 11- 5-A
W1TDS/1 (W1s FVT TDS)
2310-110-21-AB

New Hampshire

W1FZ/1... 7000-238-28-ABCD
W1AZK... 2808-103-26-ABC
W1IQD... 112- 14- 8-AB
W1WUR... 27- 9- 3-B
W1MHL/1¹ (W1s DDN
LUW QMN VXW)
12,099-302-37-ABCD
W1OAI/1 (W1s LUW OAI)
90- 15- 6-B
W1WMK/1 (W1WMK
W7VGW) 52- 13- 4-B

Rhode Island

W1KCS... 3213-112-27-ABCD
W1UHE³... 1200- 72-15-AC
W1FVZ... 450- 50- 9-A
W1CPC... 324- 54- 6-A
W1WTR... 125- 25- 5-A
W1NFD... 57- 19- 3-A
W1NFA... 54- 18- 3-A

W1WED... 39- 13- 3-A
W1FEO... 18- 6- 3-B
W1N1YT (W1N1s LXN
LYT).... 88- 22- 4-B

Vermont

W1QXX/1. 836- 76-11-B

NORTHWESTERN DIVISION

Oregon

W7INX... 280- 56- 5-AB
W7NGW... 140- 35- 4-AB
W7HBH... 120- 40- 3-AB
W7RGS³... 116- 29- 4-A
W7VJV... 56- 28- 2-A
W7WSP/7. 26- 13- 2-A

Washington

W7LHL... 735- 99- 7-ABD
W7JHX... 210- 38- 5-ABD
W7WSP/7. 70- 35- 2-A
W7NDWC/7 63- 21- 3-B
W7PUA/7 (multioperator)
927- 90- 9-ABCDE

PACIFIC DIVISION

Hawaii

KH6OS.... 5- 5- 1-B

Nevada

W6GCG/7 (W6s CUB GCG
K6DTR). 648- 54-12-AB

Santa Clara Valley

W6TZR... 148- 37- 4-B
K6HYX/6. 60- 15- 4-B
K6GWE/6¹ (10 oprs.)
3724-179-19-ABCDE
W6UW/6 (W6s MTV NOG
WAI)... 2752-160-16-ABD
K6HHL/6 (W6KFS K6s
HHL HYW JFS)
714-119- 6-A
K6JEU/6 (K6s HWJ JEU
JWZ).... 236- 59- 4-A

East Bay

K6AXN... 1500- 86-15-ABCDE
K6APB... 63- 21- 3-A
W6JOX/6 (W6s GWQ JOX)
2664-139-18-ABCD

San Francisco

W6BAZ... 2106-109-18-ABCDE
K6GOW... 648-108- 6-A
W6SIJ... 492- 82- 6-A
K6EOW... 455- 91- 5-A

San Joaquin Valley

W6OHQ/6. 825- 73-11-ABD
W6GQZ... 550- 50-11-AB
W6HAB... 27- 9- 3-B
W6BXN/6 (multioperator)
205- 41- 5-B

ROANOKE DIVISION

North Carolina

W4SOP... 145- 29- 5-B
W4NHV... 96- 24- 4-B
K4DVE/4 (W4s YJG YLU
YSB K4DVE)
63- 21- 3-B

Virginia

W4UMF... 4080-161-24-ABC
W4JCJ... 1734-102-17-AB
W3MSR/4. 490- 70- 7-B
W4WSF... 6- 3- 2-B

West Virginia

W8BKI... 33- 11- 3-B
W3SFY/8 (W3s CIK MUO
SFY WBY)
3860-191-20-ABC

SOUTHEASTERN DIVISION

Eastern Florida

W2WFB/4. 16- 8- 2-B

Georgia

W4FWH... 96- 16- 6-AB
W4IKK... 64- 16- 4-A
W4GIS... 30- 10- 3-B
W4ABP... 24- 8- 3-B
W4LNG... 10- 5- 2-AB

SOUTHWESTERN DIVISION

Los Angeles

W6NTC... 836- 70-11-ABD
W6NLZ... 540- 35-12-ABD
W6MMU... 290- 23-10-BD

(Continued on page 148)

San Diego

K6COE/6... 393-131- 3-A
W6RDF (5 oprs.)
834-128- 6-BD

**WEST GULF
DIVISION**

Northern Texas

W5FEG.... 32- 32- 1-A
K5BDL.... 29- 29- 1-A
W5GMA... 26- 26- 1-A

K5DCQ.... 24- 24- 1-A

Oklahoma

W5NDE... 80- 20- 4-AB
W5DFU... 52- 13- 4-AB

CANADIAN DIVISION

Ontario

VE3DSU... 376- 47- 8-AB
VE3AIB... 198- 33- 6-AB
VE3DSP... 26- 13- 2-B

¹ Multioperator award winner; ² Novice award winner;
³ Technician award winner; ⁴ Ho. Staff, not eligible for
award; ⁵ W1EU Dpt

From January 1957 QST © ARRL