

1955 V.H.F. Sweepstakes

8th Annual Winter Contest Activity at All-Time High

IN 1951, the low point in the history of the Annual V.H.F. Sweepstakes, 299 logs were sent in. Since then, the curve has shown a constant upswing: 365 in 1952, 385 in 1953, 610 in 1954. In the 8th running, January 8 and 9, 1955, the total climbed to 747, and this does not include a handful received after the mailing deadline. In just about any other category you can name, the 1955 V.H.F. SS was also a record-breaker.

Significantly, this came about under strictly normal conditions. Not a contestant reported any real break from conditions, yet in the more densely populated areas the contest ran hot right up through the last minute before midnight Sunday. Where heretofore more than 200 contacts by any one contestant has been a distinct rarity, no less than 15 made or exceeded the 200 mark this year, and quite a few of them turned the trick with just one band, 2 meters. W3IBH was the country's top man from the standpoint of contacts on one band, with 245 on 144 Mc., but it took W2UK's unheard-of section multiplier of 18 to post the country's top score. Tommy worked 176 stations for 6336 points, far exceeding the record of 4104 set by W2SAI, way back in 1950. And W2UK made them all on 144 Mc., and with the band dead! K2CMB's 248 contacts on 144 and 220 was the top in QSOs on more than one band.

How far the 1955 contest exceeded previous marks can be seen from the fact that nine contestants broke the old W2SAI record. As might be expected, most of these were in that hotbed of v.h.f. activity, the stretch of heavily-populated country between New York and Philadelphia, but not all the big scores were made there, by any means. W1UIZ/1, who had the temerity to take to the site used so successfully in past warm-weather contests by W1MHL/1 (Pack Monadnock Mountain, near Peterboro, N. H.) made 216 contacts in 13 sections, for 5603 points, and the No. 3 spot nationally. W1RFU, who lives on his mountain, in Wilbraham, Mass., landed in No. 2, with 218 contacts in 13 sections, for 5668. W6WSQ showed what can be done from the Los Angeles area, with 210 contacts on 144 Mc. alone. The lower section multipliers that prevail outside the small-section East kept his score out of the top ten, but his 2100 points belongs right up there with the best of them. The same goes for W8SVI, Fairborn, Ohio, who led all the inlanders with 146 contacts in 7 sections, for 2044 points.

Novices and Technicians were out in force, and there were 15 certificate winners in the newcomer categories. Novices won over-all section awards in Eastern New York and Indiana, and KN6GMV must have set some kind of

Novice record with 163 contacts on 2 meters in the Los Angeles Section.

Unlike the spring and fall contests, the SS doesn't give extra credit for use of higher bands than 144 Mc., but 31 contestants worked on 220 Mc. and 14 used 420. W6MMU managed several contacts on 1215, and W7JIP and W7OKV put their 10,000-Mc. gear to work for the party. W7AXS says that the first 220-Mc. work in the Seattle area came off during the contest.

It's the club incentive that makes the V.H.F. Sweepstakes what it is, the fourth-ranking ARRL operating activity, and the club activity was terrific in this year's event. It was a contest between two Philadelphia-area clubs, as often before, but combinations from other areas are gaining ground on the perennial leaders. The South Jersey Radio Association won another gavel award, with the first aggregate of more than 50,000 points in the history of V.H.F. SS competition, leaving their rivals, the York Road Radio

CLUB SCORES

| Club | Aggregate | Certificate Winner |
|---|-----------|---------------------|
| South Jersey Radio Assn..... | 52,361 | W2PAU |
| York Road Radio Club..... | 33,620 | W3IBH |
| Hartford County Amateur Radio Assn..... | 29,464 | W1VLE |
| Hampden County Radio Assn..... | 18,842 | W1RFU |
| Dayton Amateur Radio Assn..... | 13,715 | W8SVI |
| Windblowers V.H.F. Society..... | 13,010 | K2CMB/2 |
| Waltham Amateur Radio Assn..... | 9242 | W2BVU/1 |
| Lakeland Amateur Radio Assn..... | 6818 | W2RGV |
| Morris Radio Club..... | 6563 | K2BI |
| North Penn Amateur Radio Club..... | 6514 | W3TDF |
| Northeast Radio Club..... | 6158 | W3TYX |
| Lake Success Radio Club..... | 6064 | W2BNX/2 |
| El-Ray Amateur Radio Club..... | 3386 | W1JSM |
| Rochester V.H.F. Group..... | 2593 | W2UTH |
| Lockport Amateur Radio Assn..... | 2548 | W2ALR |
| Stratford Amateur Radio Club..... | 1946 | W1VIY |
| IBM Radio Club..... | 1910 | W2MHE |
| Queen City Emergency Net..... | 1714 | W8JSW |
| Framingham Radio Club..... | 1532 | W1NZWL |
| Buckeye Shortwave Radio Assn..... | 1328 | W8CEQ |
| Levittown Amateur Radio Club..... | 1206 | W2JUN/2 |
| West Side Radio Club..... | 1088 | VE3AIB |
| Burlington County Radio Club..... | 868 | K2DAP |
| Radiation Lab. Radio Club..... | 780 | W3LMC |
| Albuquerque V.H.F. Club..... | 582 | W5FAG |
| Johnson County Radio Amateurs Club..... | 562 | W6s GLN IJJ NNY* |
| Kenosha Radio Communications Society..... | 364 | W9ELO |
| Greensboro Radio Club..... | 183 | W4NHW |
| Winston-Salem Civil Defense Net..... | 118 | W4MRH |
| Hardin County Amateur Radio Assn..... | 74 | W4WNH |

* Three-way tie

The following clubs were also mentioned on less than three valid entries: Aero ARC, Albany ARA, Alma College RC, ARC of Falls Church, Capitol City RC, Chesapeake ARC, DuPage RC, Electric City ARC, Hamden ARA, Hamilton ARC, Kalamazoo ARC, Lake Washington ARC, Lower Columbia ARC, Mid-Island RC, Milford ARC, Milwaukee AREC, Nortown ARC, Ohio Valley ARA, Palo Alto ARA, Portland ARC, Providence RA, Quannapowitt RA, RA of Western New York, RA Open House RC, Sandusky Valley ARC, San Mateo County ARC, Santa Clara County ARA, Staten Island ARA, Steel City ARC, Tri-County RA, Tulsa ARC, Yale ARC, York ARC.

Club, far behind. The fierce competition (a private matter) between the Hampden and Hartford County clubs, "brought out the vote" in the Connecticut Valley, with the Hartford County Amateur Radio Association pulling up a good third in the country. Dayton turned out in force, but lost ground to 5th place from their No. 3 spot of last year.

In the following tabulation, scores are listed by ARRL divisions and sections. Unless otherwise noted, the top scorer in each section receives a certificate award. The highest-scoring Novice and Technician licensee also receives a certificate in each section where at least three such licensees submitted valid contest logs; asterisks denote these winners. Columns indicate the final score, the number of contacts, the section multiplier, and the bands used. A represents 50 Mc., B 144 Mc., C 220 Mc., D 420 Mc. and E 1215 Mc. and above. Multiple-operator stations, with calls of participating operators, are shown at the end of each section tabulation.

ATLANTIC DIVISION

E. Pennsylvania

W3IBH... 4410-245- 9-B
W3TDF... 4270-215-10-AB
W3KKN... 3762-209- 9-AB
W3UKI... 3472-217- 8-AB
W3TYX... 3330-185- 9-B
W3SAO... 2576-181- 8-B
W3RZU... 1848-132- 7-B
W3PKJ... 1722-123- 7-B
W3SOB... 1554-111- 7-B
W3UML... 1526-109- 7-B
W3NKD... 1488-124- 6-B
W3ARW... 1474-67-11-AB
W3UMT... 1246-89- 7-B
W3HWV... 1200-100- 6-B
W3AJF... 1024-128-4-AB
W3UXI... 1020-102-5-B
W3QVK... 940-94- 5-B
W3GRY... 860-86-5-AB
W3HYJ... 840-60- 7-B
W3MYL... 600-100- 3-B
W3VGN... 546-91- 3-B
W3NZKG*... 510-85- 3-B
W3UZF... 496-83- 3-B
W3DHH... 380-95- 2-B
W3TEC... 360-90- 2-B
W3ULC... 342-57- 3-B
W3HIX... 320-40- 4-B
W3WED... 312-78- 2-B
W3BW... 300-50- 3-B
W3DJ... 284-71- 2-B
W3SMO... 280-70- 2-B
W3IMW... 270-45- 3-B
W3GBT... 264-44- 3-B
W3CLC/3... 248-62- 2-B
W3YIW... 220-55- 2-B
W3NYXC... 216-27- 4-B
W3IND... 208-52- 2-B
W3NZTB... 200-50- 2-B
W3OIX... 188-47- 2-B

W3WHJ... 180-45- 2-B
W3DYL... 160-40- 2-B
W3EDO... 156-26- 3-B
W3NZJF/3... 150-25- 3-B
W3VMJ... 144-36- 2-B
W3TEA... 140-35- 2-B
W3VSQ... 132-33- 2-B
W3SQX... 124-31- 2-B
W3WIM... 124-31- 2-B
W3KBB... 120-30- 2-B
W3BNU... 100-25- 2-B
W3NZNU... 96-24- 2-B
W3PNL... 80-20- 2-B
W3A2/3... 68-17- 2-B
W3PFC... 60-15- 2-B
W3IHF... 32-4- 4-B
W3QVI... 28-14- 1-B
W3NZXU... 26-13- 1-B
W3YCL... 14- 1-B
W3EDU/3 (W3 EDO MMV
RAF ZPT W3YQJ)
3360-140-12-B
W3UCA/3 (W3s UCA UQC
VUF)... 656-82-4-B

Md.-Del.-D. C.

W3CGV... 1750-125- 7-ABCD
W3TOM... 1416-118- 6-AB
W3WOD... 1080-108- 5-AB
W3LZZ... 660-66- 5-B
W3BYC... 472-59- 4-B
W3ONP... 445-45- 3-B
W3YLYLQ... 340-43- 4-B
W3JES... 270-45- 3-AB
W3AHM... 252-42- 3-B
W3OTC... 208-26- 4-A
W3LMC... 184-23- 4-B
W3MLV... 180-30- 3-B
W3KML... 176-22- 4-A
W3HQX... 152-38- 2-B
W3YPW... 132-22- 3-B

W3KLA/3... 126-21- 3-B
W3ZMK... 120-30- 2-B
W3NYZJ... 104-26- 2-B
W3PPY... 36-9- 2-B
W3PGA (W3KLA, W3NZAQ)
630-53- 6-B
W3ZIB/3 (W3s JCI LMC
RQP SSF WYJ YPW)
464-58-4-AB

Southern New Jersey

W2UK... 6336-176-18-B
W2PAU... 4720-236-10-AB
W2TBD... 4480-225-10-B
W2GLV... 3636-202-9-B
W2QED... 3573-200-9-ABCD

W2BLV... 3536-221-8-B
W2NFL... 2184-156-7-B
K2DCP... 2160-120-9-B
W2LBD... 1904-119-8-B
K2GOD*1840-115-8-B
W2YRW... 1820-130-7-B
W2JAV... 1680-120-7-B
W2REB... 1464-122-6-B
W2EWN... 1152-96-6-B
W2DAJ... 1130-113-5-B
W2GGQ... 1000-106-7-B
K2JUW... 980-70-3-B
W2SPV... 852-71-6-B
W2KHW... 848-106-4-AB
W2OQN... 824-103-4-AB
W2EIF... 816-102-4-B
K2JVX... 736-92-4-B
W2BAY... 672-84-4-AB

W2ZUL... 688-86-4-B
W2OSD... 654-109-3-B
W2JRO... 648-108-3-B
W2QBH... 642-107-3-B
W2EGP... 630-105-3-B
W2NSJ... 630-63-5-B
W2LYL... 624-104-3-B
W2EGQ... 576-72-4-B
W2HEK... 574-41-7-B
W2ASG... 486-81-3-B
W2EFM... 486-81-3-B
W2ORA... 470-47-5-B
W2LEN... 390-65-3-B
W2EH... 350-35-5-B
K2DAP... 318-53-3-B
W2MGZ... 306-51-3-B
KN2KIQ... 296-74-2-B
W2VX... 282-47-3-B
KN2HHO... 260-65-2-B
KN2INQ... 260-65-2-B
K2CJX... 254-64-2-B
KN2JXF... 248-62-2-B
W2LYD... 240-30-4-B
W2SDO... 240-60-2-B
K2DQG... 236-59-2-B
W2PFG... 228-57-2-B
K2DWY... 220-55-2-B
W2UCV... 204-51-2-B
KN2JEI... 188-47-2-B
K2DFE... 180-30-3-B
W2RBF... 176-44-2-B
W2WKI... 172-43-2-B
K2AIM... 168-42-2-B
W2UQ... 164-41-2-B
W2ABQ... 160-40-2-B
W2DBP... 160-40-2-B
W2FNT... 160-40-2-B
W2BDI... 156-39-2-B
W2PTM... 114-19-3-B
W2HV... 112-28-2-B
W2WUP... 108-27-2-B
W2OXV... 84-21-2-B
W2SEZ... 78-13-3-B
W2NFB... 68-17-2-B
W2UA... 24-6-2-B
W2EVR... 14-7-1-B
K2AFJ... 8-4-1-B

W2NYY/2 (W2s FCB NYY)
1310-67-10-B
W2EBW (W2s EBW EVR)
12-6-1-B

Western New York

W2ORI... 1666-119-7-B
W2AIR... 1416-118-6-AB
W2WFB... 984-82-6-B
W2TFH... 960-82-6-B
K2EPV... 852-42-4-B
W2ZOC... 480-60-4-B
K2CEH... 459-77-3-AB
W2RHQ... 396-66-3-AB
K2DEB... 366-62-3-B
W2LXE... 280-70-2-B
W2UXP... 252-62-1-BC
KN2HIT*... 240-40-3-B
KN2INO... 222-37-3-B
W2QNA... 200-50-2-B
KN2HJB... 192-48-2-B
W2CIA... 162-27-3-B
W2SWC... 120-30-2-B
KN2IQD... 44-11-2-B
W2BLP... 34-17-1-B
W2BYJ... 26-13-1-B

Western Pennsylvania

W3KXI... 470-47-5-B
W3KWH (W3s MPK UHM
WHY ZDW, W3s ANX
ATG)... 612-51-6-AB

CENTRAL DIVISION

Illinois

W9EQC... 1476-123-6-BC
W9QXP... 1200-100-6-B
W9ZEX... 840-84-5-B
W9DRN... 736-92-4-BC
W9KMC... 664-53-4-AB
W9ILO... 552-42-3-B
W9JYG... 536-67-4-B
W9ALR... 520-65-4-B
W9USI... 440-55-4-B
W9MYC... 408-51-4-B
W9NEGB*... 324-64-3-B
W9NMBU... 252-42-3-B
W9KCV... 172-43-2-B
W9OTV... 168-28-3-B
W9CRN... 140-35-2-B
W9ADO... 80-20-2-B
W9PZP... 64-32-1-B
W9GPMH... 30-15-1-B
W9KLD... 12-3-2-B

Indiana

W9NIOC... 356-5-5-B
W9BUM... 138-23-3-B
W9JYI... 126-21-3-B
W8ILC/9... 72-18-2-B
W8FPZ/9... 32-8-2-B

Wisconsin

W9RXS... 480-60-4-B
W9GJE... 328-41-4-B
W9ELO... 280-35-4-B
W9WQ... 276-46-3-B
W9NVK... 232-29-4-B
W9NMQW*... 216-36-3-B
W9ESJ... 174-29-3-B
W9UJM... 156-26-3-B
W9BFJW... 60-15-2-B
W9BTI... 40-20-1-B
W9NJCI... 40-20-1-B
W9AAx... 38-19-1-B
W9UZK... 34-17-1-B
W9NMPY... 32-16-1-B
W9ICM... 28-14-1-B
W9JTF... 28-14-1-B
W9SOF... 18-9-1-B
W9FHT... 16-8-1-B
W9ILR... 8-4-1-B



A. J. "Tony" Sheppard, VE3DIR, Toronto, made 92 contacts on 144 Mc. in 6 sections, for 1104 points and the Ontario Section award.

DAKOTA DIVISION

South Dakota

W0RSP...24- 6- 2-B

Minnesota

W0DXY...72- 12- 3-B
W0OFY...14- 1- 1-C
W0OFZ...14- 7- 1-C
W0MVP...12- 6- 1-C
W0HPS...10- 5- 1-C
W0IMG...10- 5- 1-C
W0GRZ...10- 5- 1-C
W0PYC...10- 5- 1-C
W0HGH...8- 4- 1-C

DELTA DIVISION

Arkansas

W5HEH...12- 6- 1-B

Tennessee

W4HHK...144- 18- 4-B

GREAT LAKES DIVISION

Kentucky

W4VLA...384- 64- 3-B
W4ZPY...56- 14- 2-B
W4WNH...36- 9- 2-B
W4HJQ...32- 8- 2-B
KN4AKT...6- 3- 1-B

Michigan

W8PFU...1236-103- 6-B
W8DX...680- 85- 4-B
W8NSH...664- 83- 4-B
W8NOH...480- 40- 6-B
W8UML...400- 50- 4-B
W8AAE...350- 35- 5-B
W8TGH...285- 48- 3-B
W8DIV...270- 45- 3-B
W8NJH...270- 45- 3-B
W8CVQ...250- 25- 5-B
W8GYU...228- 38- 3-B
W8DDO...222- 37- 3-B
W8XTU...210- 37- 3-B
W8BGY...198- 33- 3-B
W8HRC...192- 32- 3-B
W8ARR...76- 19- 2-B
W8OKT...24- 12- 1-B
W8NQR/8...22- 11- 1-B

Ohio

W8SVI...2044-146- 7-B
W8LPD...1848-154- 6-ABC
W8H0H...1260-126- 5-B
W8LOF...1224-102- 6-B
W8NRM...736- 92- 4-ABC
W8SRW...704- 7- 1-B
W8HCD...660-110- 3-B
W8BAX...600- 60- 5-BC
W8NQFA*...594- 99- 3-B
W8K0M...588- 98- 3-B
W8KFC...570- 95- 3-B
W8LUZ...570- 95- 3-B
W8FDK...536- 4- 1-B
W8ZCV...527- 88- 3-B
W8HUX...525- 53- 5-B
W8SDJ...510- 85- 3-AB
W8JL...480- 60- 4-B
W8UMF...476- 60- 4-B
W8LAI...472- 58- 4-B
W8NSVW...468- 78- 3-B
W8GFN...438- 73- 3-B
W8ILC...438- 73- 3-B
W8CEQ...416- 62- 4-B
W8LCY...400- 36- 4-B
W8JSW...396- 66- 3-B
W8VQL...392- 49- 4-B
W8VSI...390- 65- 3-B
W8KTM...366- 61- 3-B
W8MCW...360- 90- 2-B
W8MBI...352- 44- 4-B
W8WRN...328- 1- 1-BC
W8BMO...324- 81- 2-BC
W8SEM...272- 68- 2-B
W8MVL...270- 45- 3-B
W8N8XL...258- 43- 3-B
W8MVA...252- 42- 3-B
W8SQU...246- 41- 3-B
W8NAF...240- 60- 2-B
W8N2VU...240- 40- 3-B
W8WUP...236- 59- 2-B
W8IUX...168- 28- 3-B
W8BAJ...164- 41- 2-B
W8JPD...164- 41- 2-B
W8ODQ...162- 27- 3-B
W8N8SZ...144- 36- 2-B
W8AQT...140- 35- 2-B
W8DPW...138- 69- 1-B
W8NHW...138- 69- 1-B
W8NRK...138- 69- 1-B
W8SPU...135- 23- 3-B
W8IPT...132- 66- 1-B
W8ZSK...132- 66- 1-B
W8NRIP...128- 32- 2-B
W8G0G...118- 57- 1-B
W8SUK...118- 57- 1-B
W8BOV...98- 49- 1-B
W8FV...96- 48- 1-B
W8N8UT...96- 24- 2-B
W8NFG...94- 47- 1-B
W8PLQ...94- 47- 1-B

W8PKS/8...92- 23- 2-B
W8RUSM...92- 23- 2-B
W8MYB...88- 44- 1-B
W8YCP...81- 41- 1-B
W8SXT...80- 40- 1-B
W8ZPH...78- 39- 1-B
W8NJP...76- 38- 1-B
W8PFX...76- 38- 1-B
W8PQZ...72- 36- 1-B
W8CEA...70- 35- 1-B
W8KQY...69- 35- 1-B
W8FPZ...68- 34- 1-B
W8DMV...62- 31- 1-B
W8MDK...60- 30- 1-B
W8ZJH...60- 30- 1-B
W8NRKL...60- 30- 1-B
W8ZOF...58- 29- 1-B
W8NGE...56- 28- 1-B
W8KWS/8...54- 27- 1-B
W8OUW...50- 25- 1-B
W8IFZ...49- 25- 1-B
W8BTP/8...46- 23- 1-B
W8RXM...46- 23- 1-B
W8KDY...44- 22- 1-B
W8ZFM...44- 22- 1-B
W8RKB...42- 21- 1-B
K8WBP...42- 21- 1-B
W8JRN...32- 16- 1-B
W8TH...32- 16- 1-B
W8NSDX...32- 16- 1-B
W8SGK/8...26- 13- 1-B
W8TBY...24- 12- 1-B
W8TFJ...20- 10- 1-B
W8ARN...14- 7- 1-B
W8INQ...8- 4- 1-C

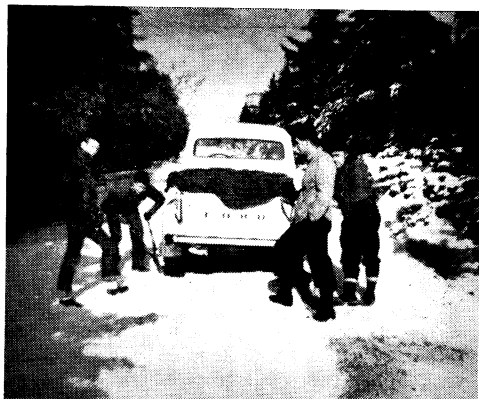
HUDSON DIVISION

Eastern New York

KN2HPN/2...1184- 74- 8-B
W2PCQ...1072- 67- 8-B
W2MHE...864- 54- 8-B
W2ZBS...800- 50- 8-B
W2AUF...380- 38- 5-B
W2IDY...260- 25- 5-B
W2LWI...160- 20- 4-B
W2GPH...112- 28- 2-B
K2CXP (K2s GCI GIA, KN2XJX) 490- 36- 7-B
K2GCH/2 (K2GCH, KN2HPK) 396- 33- 6-B
N. Y. C.-L. I.
K2IEJ/2...2360-118-10-B
W2FYQ...1596-136- 6-B
W2LID...1320-110- 6-B
KN2IBV/2...1170- 65- 9-B
W2AOD...1158- 97- 6-B
W2BNX/2...888- 74- 6-B
W2JUN/2...780- 65- 6-B
W2YHP...770- 77- 5-B
W2QV...64- 6- 1-B
W2DLO...672- 56- 6-B
W2FCN...650- 65- 5-B
W2EEN...640- 64- 5-B
W2JBQ...612- 61- 6-B
W2YSL...496- 62- 4-B
W2JN...480- 60- 4-B
K2DVB...470- 57- 5-B
K2CMV...424- 53- 4-B
W2JCI...370- 37- 5-B
W2TNF...304- 38- 4-B
W2ODB...276- 46- 3-B
K2GXL...156- 26- 3-B
K2BIC...152- 19- 4-B
W2KJC...114- 19- 3-B
W2EXE...104- 13- 4-B
KN2JTS...102- 17- 3-B
W2PBI...84- 14- 3-B
KN2IRH...84- 14- 3-B
W2TUK...64- 32- 1-B
W2SOB...40- 20- 1-B
K2CFB...34- 17- 1-B
KN2IBH...32- 16- 1-B
W2TNI...24- 12- 1-B
K2EUN...18- 9- 1-B
W2GGG...8- 4- 1-B
KN2GSI...4- 2- 1-B
W2KDO/2 (W2s AZA BNZ FSM JGR KDO KEB KFY, K2EQH) 2170-155- 7-B
W2HJM (W2s HJM JZT) 1106- 79- 7-B
W2RB (W2s RB TUK) 376- 47- 4-B

Northern New Jersey

W2RGV...5544-231-12-ABC
K2CMM...2490-248-10-BC
W2AZP...2750-125-11-B
K2BI...2290-115-10-B
K2BC...1488-124- 6-B
W2MM...1458- 81- 9-B
K2CBH...1360- 93- 7-AB
W2DZA...728- 72- 8-BC
W2PWX...1080- 54-10-B
W2IMG...960- 80- 6-B
W2ISK...930- 93- 5-B
W2FPM...870- 87- 5-B
W2ZDR...800-100- 4-B



Nearing the top of Pack Monadnock, near Peterboro, N. H., after 4½ hours of pushing, shoveling, and replacing worn-out cross-links. About to make last chain repair is W1UIZ, operator. Onlookers are Butler, Meade and Finan, the last a New Hampshire State fire warden. Fifth member of the expedition was the photographer, W1WID. A total of 216 contacts on 50 and 144 Mc., in 13 sections, netted 5603 points, third highest in the country.

W2CBB...760- 38-10-B
W2IMI...736- 92- 4-B
W2QCY...702- 59- 6-AB
K2DHE...672- 48- 7-B
W2OAE...630- 63- 5-B
K2CSM...600- 60- 5-B
W2PEV...570- 57- 5-B
K2BO...530- 50- 5-B
W2IBM...464- 58- 4-B
W2NUL...416- 52- 4-B
W2RQI...384- 48- 4-B
W2WBY/2...330- 33- 5-B
W2ZKE...276- 46- 3-AB
W2ESC/2...264- 44- 3-B
K2DFS...264- 33- 4-B
K2AIO...240- 40- 3-B
W2ESW...192- 48- 2-B
W2SYR...180- 15- 6-B
W2IDZ...172- 22- 4-AB
W2NYB...148- 19- 4-AB
K2DER...36- 13- 2-B
W2SCV...12- 6- 1-AB
K2DO...11- 8- 1-B
K2CM...10- 4- 2-B
W2JEP...8- 4- 1-B
W2YTH...8- 4- 1-AB
W2YTI...8- 4- 1-A
W2WCM...7- 4- 1-A
KN2GLQ...3- 3- 1-B
W2BDL...2- 1- 1-B
K2AWY (K2s AWY GLQ) 530- 53- 4-B
KN2KFE (KN2s KFE KNS) 512- 64- 4-B

MIDWEST DIVISION

Iowa

W0UOP...200- 25- 4-B
W0GUD...168- 21- 4-B
W0EMS...144- 18- 4-B
W0USQ...28- 7- 2-B

Kansas

W0ILI...126- 21- 3-B
W0GLN...126- 21- 3-B
W3IHS/0...60- 15- 2-B
W0MOX/0...60- 10- 3-B

Missouri

W0NNY...126- 21- 3-B
W0IHD...96- 12- 4-B
W0DWB...90- 15- 3-B
W0MOJ...80- 20- 2-B
W0MPX...80- 20- 2-B
W0MAQ...68- 17- 2-B
W0NVE...68- 17- 2-B
W0MLW...64- 16- 2-B
W0NYUH...64- 16- 2-B

Nebraska

W0HXH...20- 5- 2-B

NEW ENGLAND DIVISION

Connecticut

W1HDQ...5681-219-13-ABC
W1REZ/1...3336-140-12-ABCD
W1VLE...3201-146-11-B

W1LEO...2840-142-10-B
W1VLH...2568-107-12-B
W1WHO...2280-115-10-B
W1PHER...2096-131- 8-ABD
W1UFPV/1...2010-101- 8-B
W1TXI...1936-121- 8-B
W1NAT...1680-120- 7-B
W1UPW/1...1548- 86- 6-B
W1YDM...1500-125- 6-AB
W1VLK...1400-100- 7-ABCD
W1SPX...1152- 96- 6-AB
W1HDF...1106- 79- 7-ABCD
W1RVZ...1078- 77- 7-B
W1KBI...1064- 76- 7-B
W1YOB...940- 94- 5-AB
W1ZDP...900- 90- 5-B
W1VIV...792- 66- 6-B
W1NQA/1...672- 56- 6-B
W1AW*...644- 81- 4-AB
W1IANU...616- 77- 4-B
W1HXD...588- 98- 3-AB
W1UUY...544- 68- 4-AB
W1AW...486- 41- 3-B
W1VLL/1...480- 40- 4-B
W1RUM...450- 75- 3-B
W1VXJ...440- 58- 4-B
W1STU...360- 60- 3-B
W1URC...352- 44- 4-B
W1WRG...312- 32- 4-AB
W1KXM...252- 63- 2-B
W1NIAES/1...212- 27- 4-B
W1WRV...208- 52- 2-B
W1WQ...164- 41- 2-B
W1JNZ/M...153- 27- 3-B
W1ASO...152- 38- 3-B
W1TCW...152- 38- 2-B
W1KHM...148- 37- 2-B
W1WEA...144- 36- 2-B
W1WHR...142- 37- 2-B
W1NIGHT...140- 35- 2-B
W1CGD...128- 32- 3-B
W1QJL/1...124- 31- 2-B
W1WYM...124- 31- 2-B
W1WIG...120- 30- 2-B
W1NIDGC...120- 30- 2-B
W1WYK...116- 29- 3-B
W1GYK...114- 29- 4-B
W1NIDW...112- 28- 2-B
W1JBK...108- 27- 2-B
W1UQG...108- 27- 2-B
W1UJG...92- 23- 2-B
W1RFJ...88- 44- 1-B
W1QJL...84- 21- 4-B
W1OKT...52- 13- 2-B
W1IKL...48- 24- 1-B
W1ZTY...24- 12- 1-B
W1IRON...22- 11- 1-B
W1ORS...16- 8- 1-B
W1BDL...14- 7- 1-B
W1ADW...6- 3- 1-B
W1QAK/1 (W1s EUG LTZ QAK VRR) 3102-142-11-B
W1HCU (W1s BGT HCU) 707- 51- 7-B
W1YU (W1s URD YBZ, W2s BMF IQB K2GIO) 424- 53- 4-B

(Continued on page 138)

V.H.F. SS

(Continued from page 59)

Maine

W1TAM...216- 27- 4-AB
W1TJN...32- 8- 2-BC
WN1BBB...12- 6- 1-B

Eastern Massachusetts

W1ELP...1274- 91- 7-AB
W1NCO...868- 62- 7-B
W1JSM...830- 83- 5-B
W1VXW/1.800- 80- 5-B
W1YVB...696- 87- 4-B
W1JNX...584- 73- 4-B
W1AHE...540- 54- 5-B
W1LUW...520- 65- 4-AB
W1ZEN...400- 50- 4-B
W1DJ...384- 32- 6-A
W1AGN/M
300- 30- 5-AB
W1SIV...300- 50- 3-B
W1PYM...294- 49- 3-B
W1AQE...264- 44- 3-B
W1NXY...252- 42- 3-B
W1QMN/1.246- 41- 3-B
W1LHV...240- 40- 3-B
W1ROC...240- 40- 3-B
W1IHL...222- 37- 3-B
W1NCGU...210- 35- 3-B
W1PEX...168- 28- 3-B
W1JYC...132- 17- 4-A
W1QIB...112- 14- 4-A
W1JCI...110- 23- 2-B
W1PBM...104- 26- 2-B
W1YBT...96- 16- 3-B
W1RGY...84- 14- 3-A
W1YHM...84- 21- 2-B
W1CTR...48- 8- 3-B
W1QQW...48- 12- 2-B
W1OMI...40- 20- 1-B
W1TVK...18- 9- 1-B
W1OOP (W1OOP, W6JWA)
1716-143- 6-
ABCD
W1CBA (W1s BOA CBA
ZCQ)...390- 65- 3-B
W1MHL (W1s VZR YTL,
WN1DDN)
390- 65- 3-B
W1YIZ (W1s LJN YIZ)
240- 40- 3-B

Western Massachusetts

W1RFU...5668-218-13-AB
W2BVU/1.4764-199-12-AB
W1VNH...3410-155-11-
ABCD
W1OBQ...1602- 89- 9-B
W1CJL...1092- 78- 7-B
WN1ZWL*
1078- 77- 7-B
W1RVW...840- 84- 5-AB
W1BXB...664- 83- 4-AB
W1NY...504- 63- 4-B
W1NLE...480- 60- 4-B
W1ESA...435- 47- 5-B
W1MNG...432- 72- 3-B
W1SWJ...408- 51- 4-B
W1CNS...368- 46- 4-B
W1TDO...330- 55- 3-B
W1RRX...312- 52- 3-B
W1JWV...280- 35- 4-B
W1TAY...264- 33- 4-B
W1KUE...240- 40- 3-B
W1EVZ...231- 39- 3-B
W1OY...208- 52- 2-B
W1PHU...204- 34- 3-B
WN1DHA/M
174- 29- 3-B
WN1ZXM...144- 24- 3-B
WN1CSF/1.116- 29- 2-B
W1WDW...84- 22- 2-B
W1BH...72- 18- 2-B
W1SRM...72- 18- 2-B
W1LPC...64- 16- 2-B
W1SQY...54- 9- 3-B
W1COD...52- 13- 2-B
W1ICY...48- 12- 2-A
W1OJV...24- 6- 2-B
W1MOK...10- 5- 1-B
W1VDE/1 (W1VDE,
W3QKY)
1414-102- 7-B

New Hampshire

W1UIZ/1.5603-216-13-AB
W1AZK...1562- 71-11-AB
W1PDN...432- 27- 8-B
W1FZ...232- 29- 4-AB
W1WBM...102- 17- 3-AB
WN1CFL...28- 7- 2-B

Rhode Island

W1KCS...1302- 93- 7-AB
W1PXI...636- 53- 6-B
W1AJR...420- 35- 6-B
W1VDI...360- 45- 4-B
WN1CVF...222- 37- 3-B
W1UEF...120- 30- 2-B
WN1CPC...84- 21- 2-B

Vermont

W1MMN...368- 23- 8-B

NORTHWESTERN DIVISION

Oregon

W7INX⁵...156- 39- 2-AB
W7OKV⁵...156- 39- 2-BE
W7HBH...148- 37- 2-AB
W7NGW...144- 36- 2-AB
W7MTT...92- 23- 2-B
WN7WRA...88- 22- 2-B
WN7WQZ...48- 12- 2-B
W7BTF...44- 22- 1-B
W7SQP...38- 19- 1-B
W7JIP (W7s JIP OAY)
188- 47- 2-ABE

Washington

W7JHX...300- 50- 3-B
WN7WSP...188- 25- 2-B
W7NNR...104- 26- 2-B
W7LMZ...74- 37- 1-B
W7QKE...68- 34- 1-B
WN7VVB...68- 34- 1-B
W7AXS...46- 23- 1-ABC
W7KO...44- 22- 1-AB
W7PVZ (W7s POP PVZ
RKS, WN7s VXR WGG
YCN)...78- 39- 1-B
W7IYV (W7s GRM LCS)
38- 19- 1-B

PACIFIC DIVISION

Nevada

W7JU...12- 3- 2-B

Santa Clara Valley

W6SAW...1140-114- 5-B
W6RQG...440- 45- 5-B
KN6HYW/6
360- 45- 4-B
W6ZBS...224- 28- 4-B
W6UW⁸...78- 13- 3-B

East Bay

K6ERR...940- 94- 5-B
W6UTX...450- 75- 3-B
W6SXX...432- 54- 4-B

San Francisco

W6AJF...510- 51- 5-ABD

Sacramento Valley

W6WFW...750- 75- 5-B
KN6HIT*...640- 64- 5-B
W6LSB...550- 55- 5-ABD
W6PIV...390- 39- 5-B
W6MIW...265- 27- 5-B
KN6HIK...260- 26- 5-B
KN6IYD/6.180- 30- 3-B
W6CIS...4- 2- 1-B

San Joaquin Valley

W6OHQ/6.510- 51- 5-BD
W6GQZ...204- 34- 3-AB
W6EXH...120- 20- 3-AB

ROANOKE DIVISION

North Carolina

W4NHW...48- 24- 1-B
W4MRH...34- 17- 1-B
W4BUZ...32- 16- 1-B
W4CVQ...32- 16- 1-B
K4AMX...30- 15- 1-B
W4YSB...24- 12- 1-B
W4YLU...22- 11- 1-B
W4ACY...20- 10- 1-B
W4EKB...20- 10- 1-B
WN4EJU*...20- 10- 1-B
W4SMA...18- 9- 1-B
W4YJG...18- 9- 1-B
W4MDA...16- 8- 1-B
W4CPI...14- 7- 1-B
W4WDH...12- 6- 1-B
KN4AXF...12- 6- 1-B
KN4BJM...11- 6- 1-B
KN4AWL...8- 4- 1-B

Virginia

W4AO...3806-173-11-B
W4UBY...1862-133- 7-AB
W4DWU...1212-101- 6-B
W4JCJ...984- 82- 4-B
W4UMF...524- 66- 4-ABC
KN4ARV...228- 38- 3-B
W1BJS/4...156- 39- 2-B
W4RL...150- 25- 3-AB
W6LON/4.108- 27- 2-B
W4APQ/4 (W4APQ,
WN4EMN)
352- 44- 4-B

(Continued on page 140)

West Virginia

W8EP.....60- 10- 3-AB
W4SRD/8 (W4s JCJ SRD)
192- 24- 4-B

ROCKY MOUNTAIN DIVISION

Utah

W7QDJ.....10- 5- 1-B

SOUTHEASTERN DIVISION

Alabama

W4LNG/4..28- 7- 2-B
W4LSQ.....18- 3- 3-B
W4TKL.....6- 3- 1-B

SOUTHWESTERN DIVISION

Los Angeles

W6WSQ...2100-210- 5-B
K6ACF...1368-171- 4-B
KN6GMV*

1304-163- 4-B

KN6GHJ...500-125- 2-B
W6LIT...492- 82- 3-B
W6MRH...420-105- 2-AB
W6MMU...348- 58- 3-

ABDE
K6CJQ...240- 60- 2-B
W6HZ...184- 46- 2-ABC
KN6HDO...28- 14- 1-B
K6BNV (K6s BNV CFX,
KN6IDB) 66- 22- 1-B

WEST GULF DIVISION

Oklahoma

W5HGH⁵...36- 9- 2-B
W5HXX⁵...36- 9- 2-B

W5NDE....32- 8- 2-B
W5DFU....28- 7- 2-B
W5VKH....28- 7- 2-B
W5PZ....24- 6- 2-B
W5EGC....6- 3- 1-B

New Mexico

W5FAG....50- 25- 1-BD
W5FPB....48- 24- 1-B
W5WIY....44- 22- 1-B
W5CGE....42- 21- 1-B
W5ECS....42- 21- 1-B
W5YXM....40- 20- 1-B
WN5DFJ*..40- 20- 1-B
W5DED/5..36- 18- 1-B
W5UEO/5..32- 16- 1-B
W5HAG....28- 14- 1-B
W5DNK....24- 12- 1-B
W5FJE....22- 11- 1-B
W5WBA....22- 11- 1-B
W5EEM....20- 10- 1-B
W5FMM....20- 10- 1-B
WN5DJQ...20- 10- 1-B
W5CFJ....18- 9- 1-B
W5OIA....18- 9- 1-B
WN5IUE...12- 6- 1-B
W5NSJ.....4- 2- 1-D

CANADIAN DIVISION

Ontario

VE3DIR...1104- 92- 6-B
VE3AIB...712- 89- 4-AB
VE3DNX...576- 72- 4-B
VE3BOW...312- 52- 3-AB
VE3ATB...140- 35- 2-AB
VE3DMQ...108- 27- 2-B
VE3UT...108- 27- 2-B
VE3DHG...96- 24- 2-B
VE3CAU...84- 14- 3-AB
VE3BWE...64- 16- 2-B
VE3OJ....56- 14- 2-AB
VE3PL....36- 9- 2-AB
VE3KM....18- 9- 1-B
VE3DRV...10- 5- 1-B

¹ W3VB, opr. ² Two-way tie for Technician award. ³ W2JCI, opr. ⁴ W2TUK, opr. ⁵ Two-way tie for section award. ⁶ Hq. staff; not eligible for award. ⁷ W1QIS, opr. ⁸ K6BBD, opr.

Logs for checking purposes were also received from W1AGB, W1BJP, W1LMU, W1MGP, W2VKP, W3AHQ, W4MKJ, W6DEF and W6UCB. Thank you.

From April 1955 QST © ARRL