

# September V.H.F. Party Results

## *Increased Western Activity Nets Record Number of Logs*

**W**E MAY never be able to set up any wholly fair system for scoring v.h.f. contests, or any other operating activity, on a national scale, but the disparity between various sections of the country is dropping with every v.h.f. party. Of course, a "national high" is only a mythical honor, anyway, as there is competition only within your own ARRL section, but it is interesting to look through the tabulation at the end of this report and see where the really high scores were made.

Of the geographically small and densely populated ARRL sections along the Eastern Seaboard, only Northern and Southern New Jersey, Western Massachusetts, New Hampshire and Connecticut reported September V.H.F. Party totals higher than the 2095 points piled up in the East Bay Section by K6GWE, Berkeley, Calif. Five eastern sections, supposedly cinches for high spots in a national ranking, were topped by Illinois, Ohio, Michigan, Santa Clara Valley, East Bay and Los Angeles.

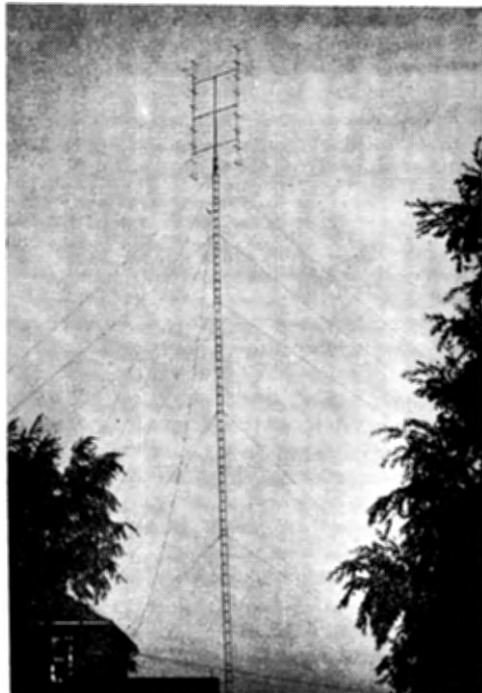
Ignoring the section multiplier, an unfair factor in national comparisons, we find that the number of contacts made is becoming more uniform, the country over, with every contest. In only two ARRL sections, Northern New Jersey and Los Angeles, were more than 200 contacts reported. In the bracket between 150 and 200, we find Illinois, Ohio, Western Massachusetts and New Hampshire. Of the sections reporting 100 to 150 contacts, Indiana, Michigan, Santa Clara Valley and East Bay are outside the "favored" Atlantic Seaboard states. The country's highest one-band score was made, not by an East Coast station, but by W8WXV, Shiloh, Ohio, who worked 196 stations in 17 sections, 3332 points, on 144 Mc. alone.

The ability to work several bands is the most important factor in high scoring, in any section. The rules were set up with that in mind: to promote versatility and encourage the use of our higher bands. Working all bands from 50 to 1215 Mc. enabled K2CMB, Paterson, N. J., to make 280 contacts for 8456 points, the country's high for a single-operator set-up. The 230 contacts of W6WSQ, Pasadena, Calif., made on 50, 144 and 420 Mc., is second in number of QSOs. Lee Waite, W2FBZ, a frequent Northern New Jersey winner, worked 4 bands for 206 contacts and 7488 points, running K2CMB a close second for national single-operator high.

Mountain expeditions, as always in spring and fall parties, contributed greatly to the success of the contest. For once, the W1MHL/1 team came off second best. A combination new to v.h.f. contests but with long Field Day experience, W2GSA/2, Garden State Amateur Radio Association, nosed out the Waltham

group, with 327 contacts on 50, 144 and 220 Mc., for 9715 points. Some nice 2-meter DX was worked in the Northwest by mountain portables. W7PVZ/7 in a fire lookout on Capitol Peak, near Olympia, Wash., worked W7LHL/7 on Bolan Peak in Southern Oregon, about 350 miles. An indication of the growth of 2-meter interest in that region: W7PVZ/7 worked 83 different stations on 144 Mc.

The 1215-Mc. band loomed as a v.h.f. contest factor of some proportions. As the result



Sixty-four element beam atop a 100-foot tower — W8WXV, Shiloh, Ohio, country's top one-band scorer. Al worked 196 stations on 144 Mc.

of cooperative effort by K2CMI, K2DFS and W3UQB, five nearly identical 1215-Mc. stations were built. These used 2C39 cavity oscillators, delivering about 12 watts output. Tuned-cavity crystal mixers with 144-Mc. output worked into Gonset Communicators as tunable i.f.'s. Duplicate corner-reflector arrays were used for transmission and reception. The rigs were used by W1JRV/1 at Mead Pond, just over the line in Connecticut, W3UQB/2 at Balanced Rock, Nyack, N. Y., K2DFS, at his home in Bergenfield, N. J., and K2CMI/2 and W2FSN/2 in Manhattan high spots, to give K2CMB five contacts in four ARRL sections on 1215 Mc.

Around San Francisco there was enough doing

on 144 Mc. so that W6TDP made 56 contacts with 5 watts input to a 5763 doubler (rig built from W2IHW's description in February, 1954, QST), and a cut-down TV Yagi hung in his basement!

Two 0-0-0 scores don't appear in the tabulation, but they represent effort and good intentions. One goes to W7RCC, Panguitch, Utah, who was in there trying, but heard no signals. The other was earned by W1HDQ/Ø. Your conductor got up before 0600 Sunday morning and drove out from the Dakota Division Convention Headquarters in Rapid City, S. D., to a fine clear spot in the Black Hills. Having been in every v.h.f. contest since the first one in 1939, he was going to give this one the "college try," but he didn't reckon with the effects of the bright South Dakota sun. With the car parked, windows closed, all the previous day, the crystal mike just couldn't take it. Having no provision for keying the rig or copying c.w., on the mobile receiver, W1HDQ/Ø folded his beam and silently stoke back to Rapid City.

In the following tabulation, scores are listed by ARRL Divisions and Sections. Unless otherwise noted, the top scorer in each section receives a certificate award. Columns indicate the final score, the number of contacts, the section multiplier, and the bands used. A represents 50 Mc.; B, 144 Mc.; C, 220 Mc.; D, 420 Mc.; and E, 1215 Mc. Multiple-operator stations, with calls of participating operators, are shown at the end of each section tabulation.

### ATLANTIC DIVISION

#### E. Pennsylvania

W3TDF...2016-112-18-AB  
W3TYX...1024-128-8-B  
W3MRQ/3...714-45-14-BCD  
W3YWF...644-89-7-BC  
W3SAO...595-85-7-B  
W3OLV/3...540-60-9-B  
W3WED...112-28-4-B  
W3THB...48-16-3-B  
W3LGM...64-8-2-B  
W3KX/8\* (W3s DXG LZD  
YPG NNH QGX PMT)  
4288-117-32-

ABCD  
W3LCK/3 (W3s LCK NEP)  
228-32-6-BD

#### Maryland-Delaware-D. C.

W3TOM...988-76-13-AB  
W3CGV...832-63-13-ABC  
W3YHI...792-88-9-B  
W3LMC...729-81-9-B  
W3UJG...648-51-12-ABC  
W3LZZ...200-44-5-B  
W3OJU...189-27-7-A  
W3OTC...116-21-6-A  
W3NZR...115-23-5-B  
W3KMW...114-19-6-A  
W3PGA...110-22-5-B  
W3NEH...104-26-4-B  
W3ONP...104-26-4-B  
W3NYLQ...93-31-3-B  
W3BYG...88-22-4-B  
W3ZMK...75-25-3-B  
W4WFL/3...36-18-2-B

#### S. New Jersey

W2QED...3425-127-25-  
ABCD  
W2UK...2006-118-17-B  
W2BLV...561-47-11-BD  
W2ORA...248-31-8-AB  
W2BAY...16-4-4-A

#### Western New York

W2ALR...1177-107-11-AB  
W2RUL...1144-79-13-  
ABCD  
K2CEH...750-75-10-AB  
W2UTH...700-70-10-AB  
W2ORL...432-72-6-B  
W2WFB...400-50-8-B  
W2RHQ...384-63-6-AC  
K2NHAC...249-24-4-AB  
W2FCC/2...204-34-6-B  
W2KZ...200-50-4-B  
W2QNA...152-38-4-B  
W2RXG...125-25-5-B  
K2CXV...52-13-4-B

W2CTA...46-23-2-B  
W2QY...42-21-2-B  
W2EFO...38-19-2-B  
W2BLN/2...24-8-3-B  
K2BKM...23-1-1-B  
W2BLP...10-10-1-B  
W2BJL...10-5-2-A  
W2TBJQ...7-7-1-B  
W2JGJ\* (W2s JGJ UPT)  
1660-83-20-AB

W2OFQ/2 (W2s OXS MSM  
HAX K2s HW AQP)  
715-54-13-BD

#### W. Pennsylvania

W3FFH...517-47-11-AB  
W3KWL...342-57-6-AB  
W3KXL...275-55-5-B  
W3QCN...9-5-2-B  
W3KWH (W3s UHM SVJ  
ZDW MPK WHY)  
585-65-9-AB

### CENTRAL DIVISION

#### Illinois

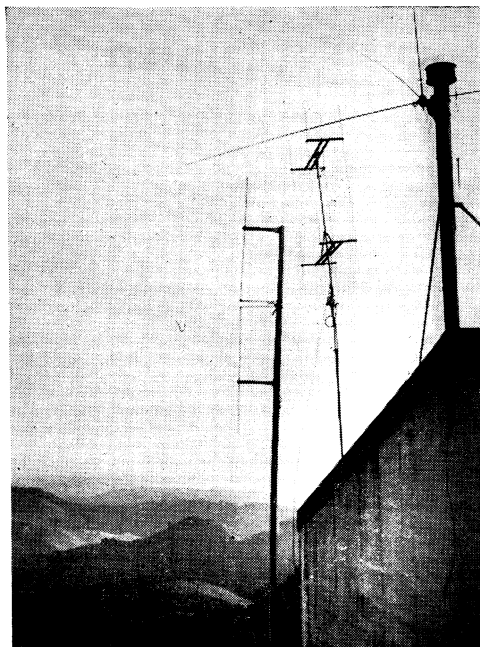
W9WOK...2325-155-15-AB  
W9EQC...1120-112-10-B  
W9DYN...1070-108-10-BC  
W9QKM...890-89-10-AB  
W9VIT...525-75-7-B  
WN9HYG...434-62-7-B  
W9VNW...402-67-6-B  
W9ALR...390-65-6-B  
W9USI...345-69-6-B  
W9EGB...312-24-6-B  
W9ADO...216-36-6-B  
W9BOI...200-40-6-B  
W9KCV...170-34-5-B  
W9KLD...160-32-5-B  
W9IFA...150-25-6-B  
W9KCM...120-24-6-B  
W9OEV...100-20-5-B  
W9ZEX...80-20-4-B  
W9MYC...46-23-2-B  
W9XC...45-15-3-B  
W9PMN...30-10-3-B  
W9OTV...9-9-1-B

#### Indiana

W9KLR...1441-131-11-B  
W9ZHL...732-61-12-AB  
W9NIMO...112-16-7-B  
W9TEW...90-18-5-B  
W9VY...88-22-6-B  
W9NIOC...50-10-5-B

#### Wisconsin

W9RXS...408-68-6-B  
W9ZAD...378-54-7-AB



Antennas and part of 360-degree view at the location of K6GWE, Vollmer Peak, Berkeley, Calif., East Bay Section leader.

W9TQ...210-35-6-AB  
W9BTI...150-25-6-AB  
W9UJM...144-36-4-B  
W9GJE...100-25-4-B  
W9DSE...80-16-5-B  
W9ZJA...56-14-4-B

### DAKOTA DIVISION

#### Minnesota

W0TJF...60-12-5-B  
W0OAC...48-12-4-B  
W0MVP...4-2-1-C  
W0OFY...4-2-1-C  
W0OFZ...4-2-1-C

### DELTA DIVISION

#### Tennessee

W4HHK...320-32-10-B  
W4HS...69-23-3-B

### GREAT LAKES DIVISION

#### Kentucky

W4PCT...935-85-11-AB

#### Michigan

W8RMH...2040-115-17-  
ABCD

W8DX...1320-80-15-  
ABCD

W8NOH...288-48-6-B  
W8NSH...240-48-5-B  
W8SPNX...205-41-5-B  
W8CYU...200-40-5-B  
W8DDO...180-36-5-AB  
W8PFSN...164-41-4-B  
W8BGY...152-38-4-B  
W8GTK...148-37-4-B  
W8JXU...90-30-3-B  
W8TGH...62-21-3-B  
W8NPFCE...57-19-3-B  
W8HLQ...52-26-2-B  
W8NQOC (W8s PJS QOO  
SXZ)...144-36-4-B

#### Ohio

W8WXV...3332-196-17-B  
W8LFD...2100-133-15-ABC  
W8NRM...1722-112-14-  
ABCD

W8SDJ...680-85-8-B  
W8HOH...600-73-8-BC  
W8LAH...512-64-8-B

W8JSW...486-81-6-B  
W8HQB...432-72-6-AB  
W8LOF...360-60-6-B  
W8BMO...340-63-5-BC  
W8N8PER\*...325-65-5-B  
W8BAZ...290-56-5-BC  
W8WRN...273-37-7-ABC  
W8QLB...238-34-7-AB  
W8JLL...235-47-5-B  
W8N8RO...235-47-5-B  
W8FAZ...215-40-5-BC  
W8OIN...215-43-5-B  
W8PMJ...185-37-6-B  
W8KOM...114-57-2-B  
W8LCY...112-28-4-B  
W8N8QEP...92-46-2-B  
W8N8QIU...74-37-2-B  
W8NAF...72-36-2-B  
W8HSY...70-35-6-B  
W8NSVU...62-31-2-B  
W8N8PKS/8...56-28-2-B  
W8IFZ...44-22-2-B  
W8WAB...34-17-1-C  
W8INQ...12-6-1-C  
W8OIM...7-7-1-B

### HUDSON DIVISION

#### Eastern New York

W2RMA...1134-63-18-AB  
W2MXJ...670-67-10-B  
W2ACY...624-52-12-B  
K2DRV...410-41-10-B  
W2MHE...341-31-11-B  
W2RTE...112-16-7-B  
W2YIK...100-20-5-AB  
W2RML (W2s RML ESE  
K2GCH KN2HPK)  
560-70-8-B

#### N. Y. C. L. I.

W2KIT...2044-146-14-B  
W2BRV...1260-126-10-B  
K2JEJ/2...948-79-12-B  
W2JBQ...936-78-12-B  
W2DZR...882-98-9-B  
W2KIR...882-98-9-B  
W2AOD...856-100-8-BD  
W2FYQ...804-134-6-B  
W2DLO...748-68-11-AB  
W2GLU...546-78-7-B  
K2DUI...480-40-12-B  
W2LID...470-94-5-B  
W2SIN...455-91-5-B  
W2BNX/2...370-74-5-B  
W2AWH...312-52-6-AB  
K2ESZ...252-63-4-B  
W2EBN...240-60-4-B  
W2YHF...188-47-4-B  
W2LKP...186-25-6-BD

KN2HOR. 184-46 4-B  
 K2CMV. 164-41 4-B  
 W2IN. 144-48 3-B  
 W2TUK. 144-36 4-B  
 K2CWF. 144-36 4-B  
 W2WOF. 140-17 5-BD  
 KN2HMM/2. 42-21 2-B  
 KN2IPH. 15-15 1-B  
 W2JZT/2 (W28 HJM JZT) 270-45 6-B

*N. New Jersey*

K2CMB. 8456-280-28- ABCD  
 W2FBZ. 7488-206-32- ABCD  
 W2RGV. 5150-194-25-ABC  
 W2DZA. 1683-81-17- ABCD  
 W2LHL. 732-61-12-B  
 W2MM. 540-60-9-B  
 K2BJP. 532-76-7-B  
 KN2IEY/M 460-115-4-B  
 W2PEV. 300-40-5-B  
 K2EQD. 300-40-5-B  
 W2ESC/M 123-41-3-B  
 W2OAE. 92-23-4-B  
 W2GSA/2 (W28 FZY CQB) PAT PWX QUM NBE HWX AF K28 EGO HNA) 9715-327-29-ABC

**MIDWEST DIVISION**

*Iowa*

WN0USQ. 66-22 3-B  
*Kansas*  
 W0IJJ. 182-26 7-B  
 W0BDK. 95-19 5-B  
 W0HAJ. 85-17 5-B  
 W0JAS. 60-15 4-B  
 W0MOX/ø. 27-9 3-B  
*Missouri*  
 W0ETJ. 648-54-12-B  
 W0IHD. 192-32 6-B  
*Nebraska*  
 W0HXH. 156-26 6-B  
 W0VEC. 150-25 6-B  
 W0LEF. 105-21 5-B

**NEW ENGLAND DIVISION**

*Connecticut*

W2BVU/1 4263-137-29- ABCD  
 WIKHL. 2646-126-21-AB  
 WIHDQ3/4 2332-105-22-ABD  
 W1PHR. 1683-97-14-ABD  
 W1REZ. 1268-90-14-AB  
 W1TXI. 900-90-10-B  
 W1URC. 510-51-10-B  
 W1QAK. 459-51-9-B  
 W1ZDP4. 420-60-7-B  
 W1RMU. 336-56-6-B  
 W1YOB. 240-40-6-B  
 W1AW4/5. 228-38-6-AB  
 WN1CDD/2. 228-57-4-B  
 W1ULY. 210-42-5-B  
 W1STU. 188-47-4-B  
 WN1AMY. 150-50-3-B  
 W1YDS. 111-37-3-B  
 W1AKX. 98-49-2-B  
 W1KHM. 84-21-4-AB  
 W1NEQ. 75-25-3-B  
 WN1CDC. 60-30-2-B  
 W1QJL/1. 56-28-2-B  
 W1EFW. 36-18-2-B  
 W1WEF. 4-4-1-B

*Maine*

W1TAM. 374-34-11-AB  
 W1LKP. 24-4-4- ABCD

*E. Massachusetts*

W1OOP. 1921-102-17- ABCD  
 W1AQE. 1200-100-12-AB  
 W1JSM. 1188-108-11-B  
 W1CTW. 918-92-9-ABC  
 W1LYL. 345-69-5-B  
 W1DJD. 240-30-8-A  
 W1BRK. 108-27-4-B  
 WN1ZOC. 75-25-3-B  
 WN1BYI. 60-62-2-B  
 W1MEG. 56-14-4-B  
 W1CTR. 36-12-3-B  
 W1MGE/M. 23-11-3-A  
 W1TUM. 28-7-2-C  
 W1AEQ. 22-11-2-B  
 W1QCQ/16 (W18 QCC VZQ) 3500-120-28- ABCD  
 W1KBN (W18 KBN VKT) 80-20-4-B  
 W1YIZ (W18 LJM YIZ) 48-16-3-B

W3Massachusetts  
 W1RUF. 5348-191-28-AB  
 W1VNH. 2875-113-25-ABD  
 W1JWV. 150-30-5-B  
 K2GIR/1. 128-16-8-A  
 W1HXD/1 (W18 HXD RGM UIY WRG) 742-53-14-AB

*New Hampshire*

W1FZ/1. 4752-166-27- ABCD  
 W1UIZ/1 2976-119-24-ABC  
 W1WBM. 78-13-6-AB  
 W1MHL/16 (W18 LUW PYM QMN RD) 9316-257-34- ABCD  
 W1LUW/M (W18 LUW QMN) 10-5-2-B

*Rhode Island*

W1ZJQ. 2002-143-14-B  
 W1UEF/1 (W18 KFL UEF WUJ) 355-71-5-B

*Vermont*

W1MMN. 96-16-6-B  
 W1YDM/1 (W18 VLJ YDM) 1691-89-19-AB

**NORTHWESTERN DIVISION**

*Oregon*

W7OKV/7. 180-60-3-B  
 W7NGW. 112-28-4-AB  
 W7INX. 81-27-3-AB  
 W7HBL. 69-23-3-AB  
 W7NNR. 42-21-2-B  
 W7JJP/7 (W78 JJP OAY SAO) 284-71-4-AB

*Washington*

W7UFE. 315-63-5-AB  
 W7INX/7. 249-33-3-B  
 W7JHX. 200-50-4-AB  
 WN7UZB. 153-51-3-B  
 W7SRL/1. 126-43-3-B  
 W7R7. 106-53-2-AB  
 W7TMU. 87-29-3-AB  
 W7PRV. 72-36-2-B  
 W7KO. 68-34-2-AB  
 W7ALU. 56-28-2-B  
 WN7WRI. 40-20-2-B  
 W7PQS. 36-18-2-AB  
 W7BML. 30-15-2-B  
 W7BYK. 30-15-2-AB  
 W7BB/7 (W78 QKE IEE) 335-67-5-AB

**PACIFIC DIVISION**

*Neveda*

W7JU. 8-4-2-B  
*Santa Clara Valley*  
 W6YEQ. 1708-114-14-ABD  
 W6EDC. 1224-100-12-ABD  
 W6SAW. 610-102-6-B  
 W6EXX. 540-90-6-B  
 KN6CQG. 208-52-4-B  
 KN6DTS. 150-30-5-B  
 W6BDO/6 (W68 BDO YGX SSA ODK K6CZ1) 1365-98-13-ABD

*East Bay*

W6UPD. 205-41-5-B  
 W6PEG/M. 57-19-3-B  
 K6GWE/6 (W68 DNX MXQ RLB UOV VSV) 2096-121-16- ABCD

W6JOX (W68 JOX MGO) 1111-101-11-AB  
 KN6EDX/6 (W6QZE K6ERG KN6EDX) 636-106-6-B  
 K6AZH/6 (W68 RKT EXL VDR JLG) 540-90-6-AB

*San Francisco*

W6AJF. 1425-86-15- ABCD  
 W6BAZ. 610-61-10-AB  
 W6TDP. 280-56-5-B  
 KN6HFK. 252-63-4-B  
 K6GVB. 108-27-4-B

*Sacramento Valley*

W6PIV. 304-38-8-AB  
 W6OTN. 216-36-6-B  
 W6VBU. 86-29-4-B  
 KN6KUI/6 (W6B3J K6BIQ) 531-59-9-AB  
 K6BAT (K68 AXN BAT) 152-18-8-ABD

**ROANOKE DIVISION**

*North Carolina*

W4MDA. 30-10-3-B

*Virginia*  
 W4UBY. 1326-102-13-AB  
 W4UMF. 876-69-12-ABC  
 W4JCY. 783-87-9-B  
 W4MLR. 354-59-6-B  
 W4VVE. 175-23-7-BD  
 W6LON/4. 155-31-5-B  
 W38FY/4 (W38 SFY WBY) 780-78-10-AB

**SOUTHEASTERN DIVISION**

*Alabama*

W4TLV. 28-7-4-B

**SOUTHWESTERN DIVISION**

*Los Angeles*

W6WSQ. 1617-230-7-ABD  
 W6MMU. 999-109-9-ABD  
 W61WY. 819-82-9- ABCD  
 W6QGX. 543-181-9-B  
 K6ACF. 396-132-3-B  
 K6DNJ. 333-111-3-B  
 W6LIT. 330-66-5-AB  
 KN6GMX. 330-110-3-B  
 W6MRH. 294-98-3-B  
 W6HZ. 250-54-6-BC  
 W6WRT. 222-74-3-B  
 W6DXI. 60-60-1-B  
 K6CJG. 6-6-1-B  
 W6LEP/6. 2-2-1-B  
 W6YZU/6. 2-2-1-B

*Arizona*

W7LEE. 95-19-5-B  
 W7VMP. 95-19-5-B  
 W7YZU. 28-7-4-B

*Santa Barbara*

W6OHQ/6 364-50-7-BD  
 K6CRJ. 129-43-3-B

KN6HEC... 54-18-3-B

**WEST GULF DIVISION**

*Northern Texas*

W5SNX. 3-3-1-B  
*Oklahoma*  
 W5DFU. 21-7-3-B

*New Mexico*

W5FAG/5. 24-12-2-B  
 W5FPB. 11-11-1-B  
 W5EYR. 7-7-1-B  
 W9EYV/5. 6-6-1-B

**CANADIAN DIVISION**

*Maritime*

VO6U. 12-4-1-AC  
 W7SNR/VO69. 6-1-AC

*Ontario*

VE3BQN/3 1067-93-11- ABCD  
 VE3DNX. 869-78-11-BC  
 VE3ALB. 776-95-8-ABD  
 VE3DIR. 462-66-7-B  
 VE3AQQ. 335-71-5-B  
 VE3BGI. 225-45-5-AB  
 VE3DSU. 215-43-5-B  
 VE3DHG. 210-42-5-AB  
 VE3DER. 204-34-6-AB  
 VE3AET. 155-47-5-AB  
 VE3AGW. 168-42-4-AB  
 VE3BMB. 132-33-4-B  
 VE3BPB. 72-12-6-B  
 VE3KM. 9-9-1-A

*Quebec*

VE2AOK. 126-18-7-B

*British Columbia*

VE7FJ. 48-16-3-B

<sup>1</sup> WN3ZAQ, opr. <sup>2</sup> Novice award winner. <sup>3</sup> W1VLH, opr. <sup>4</sup> Hq. staff — not eligible for award. <sup>5</sup> W1WPR, opr. <sup>6</sup> Multiple-operator award winner. <sup>7</sup> W7QPM, opr.

**CALLING ALL NOVICES: CQ N-R!**

The Novice Round-up makes its fourth annual appearance this year, January 8th through 23rd. Old-timers are invited to join in the fun and give the newcomers contacts.

Full details appeared in December *QST*, but as a reminder, don't forget that the Round-up starts on Saturday, January 8th, at 6:00 P.M., local time, and ends on Sunday, January 23rd, 9:00 P.M. local time. A time limit of forty hours is available. This can be used any way you prefer in operation on 80, 40, 15 and 2 meters.

You've still time to get extra scoring credits by qualifying in the Code Proficiency Run from W1AW on January 14th, or from W6OWP on January 7th. In the meantime, send to ARRL Headquarters for your free map of the United States, a contest log, and reporting forms for the Novice Round-up. The fine outline map can be posted in your shack to keep a visual check on your worked-all-states progress.

Remember to read December *QST* again for full details on rules.