

# June V.H.F. Party Results

## Activity and Reporting at New Summertime High

**I**N years past, if conditions were generally poor throughout the East, we could look for a low yield in contest reports when it came time to total up the scores. Not so June, 1954. Thanks to a wider geographic distribution of activity than ever before, the V.H.F. QSO Party of June 5th and 6th broke all previous records. The tabulation shows 370 logs received from 47 ARRL Sections, a record in both categories.

Many of the leaders' scores were below levels set last June or September, but almost without exception activity and interest were phenomenal. Along the Atlantic Seaboard there was no break in the totally-dead nature of propagation throughout the Party, but elsewhere the 50-Mc. band did well with widespread sporadic-E skip openings, and tropospheric conditions helped things along on 144 Mc. and higher bands.

As in just about every spring and fall contest in the past, the v.h.f. operators of the Waltham Amateur Radio Association ran up the country's highest score, though they missed their September record by a wide margin. Using 50, 144, 220 and 420 Mc., W1MHL/1, atop Pack Monadnock Mountain, near Peterboro, N. H., made 281 contacts, with a section multiplier of 28, for 8316 points. They won the first multi-operator section award ever to be issued to a v.h.f. contest station, this type of award having been added to the contest rules for the June Party.

The country's high in the single-operator class was made by Liane Waite, W2FBZ, Upper Montclair, N. J., with 185 contacts and a multiplier of 25 for 4925 points. Not far behind her was W1RFU, Wilbraham, Mass., with 150 and 28 for 4396 points. If there were a most-contacts award, it would go to K2CMB, Paterson, N. J., for his 246 contacts on 144 Mc. And the hardest-work award would be for the boys of W1UIZ/1 who toted gear for 50, 144 and 220 Mc. to the top of Mt. Monadnock, near Jaffrey, N. H. You can see from the accompanying picture something of what this barren pile of rock is like — but the spot where they are perched is about 2 miles of rocky trail from the nearest road. They earned their 159 contacts, 3933 points and New Hampshire section award!

But performance in a v.h.f. contest cannot be judged by number of contacts, section totals or scores, unless you know the possibilities of the area you're considering. There is simply no basis upon which a national scoring system can be worked out, so our awards are made on an ARRL Section basis only. Viewed in this light, W7OKV/7 in Oregon and W7s QKE, MZS and JHX in Washington, all with over 50 contacts on 144 Mc., rate a big hand; and W6YEQ, who won the Santa Clara Valley section award with 123 contacts for 2286 points, and W6AJF, Sacramento Valley winner with 113 contacts and 2380 points, rank with the country's leaders.

There must have been plenty of activity in southern California, for W6AXK/6 worked 106 stations on 144 Mc., but his was one of but two logs received from the entire Southwestern Division. W6AXK reports that he had to explain the contest set-up to many of the fellows he worked, 28 of them Novices. How about more logs from Los Angeles and San Diego in September?

In the following tabulation, scores are listed by ARRL Divisions and Sections. Unless otherwise noted, the top scorer in each section receives a certificate award. Columns indicate the final score, the number of contacts, the section multiplier, and the bands used. A represents 50 Mc.; B, 144 Mc.; C, 220 Mc.; and D, 420 Mc. Multiple-operator stations, with calls of participating operators, are shown at the end of each section tabulation.

### ATLANTIC DIVISION

#### E. Pennsylvania

W3TDF... 1020-85-12-AB  
 W3VWF... 376-94-4-B  
 W3SAO... 304-76-4-B  
 W3TEC... 292-73-4-B  
 W3WED... 183-61-3-B  
 W3SVL... 180-45-4-B  
 W3EDO/3... 108-36-3-B  
 W3PMG... 80-16-5-AB  
 W3GPFZ... 75-25-3-B  
 W3BNU... 74-37-2-B  
 W3IMW... 62-31-2-B  
 W3PNL... 50-25-2-B  
 W3UMK... 48-16-3-B

W3KX/3 (W3s EBE LCK  
 LCM LKL LZD MRQ NNH  
 PMG QGF QGX TKK)  
 3538-103-29-ABCD

#### Md.-Del.-D. C.

W3PRB... 488-58-8-ABC  
 W3YHL... 472-59-8-B  
 W3LMC... 312-52-6-B  
 W3TOM/3... 177-59-3-B  
 W3TFA... 168-39-4-BC  
 W3VAM... 150-25-6-AB  
 W3WOD... 140-35-4-B  
 W3GKP... 123-41-3-B

W3LZZ... 84-28-3-B  
 W3AHM... 46-23-2-B  
 W3WDA... 39-13-3-B  
 W3RAH/3 (W3s CIQ RAH)  
 476-68-7-B

#### S. New Jersey

W2QED... 1800-110-15-ABCD  
 W2BLV... 1310-127-10-BD  
 W2UK... 1230-82-15-B  
 W2AF/2... 260-26-10-A  
 W2ORA... 255-51-5-AB  
 W2SJB... 27-9-3-B  
 W2BAY... 12-4-3-A  
 W2ZQ (W2s JWA UAE ZI)  
 111-37-3-B

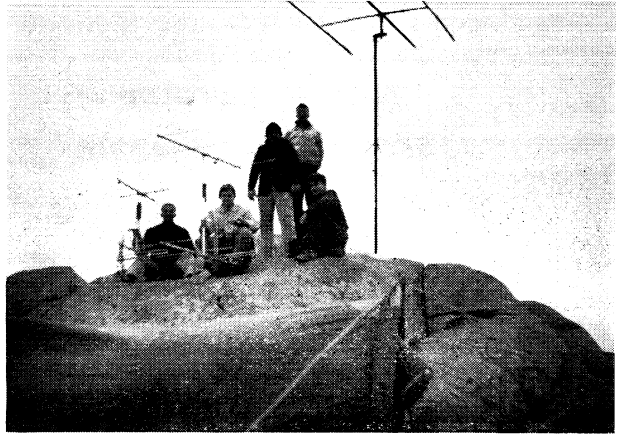
#### Western New York

W2BVU/2... 1794-69-23-ABCD  
 W2RUI... 890-86-10-ABD  
 W2ORI... 790-75-10-BD  
 W2ALD... 728-91-8-AB  
 K2CEH... 462-66-7-AB  
 W2UFI... 385-77-5-AB  
 K2HBL... 312-78-4-B  
 W2CCR... 310-62-5-B  
 W2VCR... 304-76-4-B  
 W2IRU... 255-50-5-BD

Being the operator of the highest 2-meter fixed station in eastern America is not all sunshine and v.h.f. DX. Here W1PDN, Mt. Washington, N. H., tries to get his 16-element array back into some semblance of working order for the second day of the June V.H.F. Party. By nightfall there was nothing left but the boom.



And there are few home comforts on the bleak summit of Mt. Monadnock, near Jaffrey, N. H., scene of operations for WUIZ/1 in the June contest. Crew who carried gear up the rocky slopes: left to right, WN4BRL, W1WID, Foster, Hazen, and operator WUIZ. Beams for 220, 144 and 50 Mc. don't have to be elevated — there's no "ground" for at least 1000 feet straight down.



W2SHT.....250- 50- 5-B  
W2VVG.....244- 61- 4-B  
W2OWF.....216- 54- 4-AB  
K2CUY.....150- 50- 3-B  
W2FCG/2.....78- 26- 3-B  
W2WJG/2.....32- 16- 2-A  
W2WON/2.....576- 48-12-AB  
W2FRL/2 (W2s ALL FRL)  
518- 74- 7-AB

*W. Pennsylvania*

W3LNA/3.....200- 40- 5-B  
W3KWL.....140- 28- 5-AB  
WN3YNN.....4- 4- 1-B  
W3KWH (W3s RXT UHM  
WHY).....781- 71-11-AB

**CENTRAL DIVISION**

*Illinois*

W9QKM.....738- 82- 9-AB  
W9WOK.....658- 47-14-AB  
W9PPA.....352- 88- 4-B  
W9DRN.....315- 61- 5-BC  
W9SPM.....296- 74- 4-B  
W9PK.....190- 58- 3-B  
W9USI.....272- 68- 4-B  
WN9AFP1.....264- 66- 4-B  
W9OCT.....200- 50- 4-B  
W9BOI.....180- 45- 4-B  
W9SRK.....180- 45- 4-B  
WN9ECB.....176- 44- 4-B  
W9LYG.....150- 50- 3-B  
W9WNK.....132- 44- 3-B  
WN9ZQG.....129- 43- 3-B  
W9ALR.....128- 42- 3-B  
W9ULF.....96- 32- 3-B  
W9CPF.....93- 31- 3-B  
W9ADO.....90- 30- 3-B  
W9SEF.....90- 30- 3-B  
WN9ZWO.....69- 23- 3-B  
W9TGN.....63- 21- 3-B  
W9KCW.....48- 24- 2-B  
W9IQ2.....36- 18- 2-B  
W9PMN.....30- 10- 3-B  
W9RPH.....15- 7- 1-B  
W9RON.....7- 7- 1-B

*Indiana*

W9KLR.....880-110- 8-B  
W9ZEL.....407- 37-11-AB  
W9CALW.....260- 52- 5-B  
W9MHP.....128- 16- 8-AB  
W9BUM.....124- 31- 4-B  
WN9ZZS.....93- 31- 3-B  
W9MTV.....80- 20- 2-B  
W9VAY.....34- 17- 4-B

*Wisconsin*

W9ZAD.....360- 60- 6-AB  
W9TQ.....329- 47- 7-AB  
W9UJM.....168- 42- 4-B  
W9NVK.....128- 32- 4-B  
W9LEE.....60- 15- 4-B  
W9DFE.....21- 7- 3-B  
W9ZJA.....14- 7- 2-B

**DAKOTA DIVISION**

*S. Dakota*

WN9RSP.....51- 17- 3-B  
W9ORE.....20- 10- 2-B  
W9DB.....6- 3- 2-B

*Minnesota*

WN9PYC.....5- 5- 1-B

**DELTA DIVISION**

*Mississippi*

W5RCL.....112- 15- 7-BC

*Tennessee*

W4HKK.....210- 30- 7-B  
W4UDQ.....100- 25- 4-B  
W4HFO.....63- 9- 7-A  
W4FLW.....32- 8- 4-A  
W4GIS.....18- 9- 2-B

**GREAT LAKES DIVISION**

*Kentucky*

W4PCT.....372- 62- 6-B  
W4BAZ/AM.....60- 20- 3-B

*Michigan*

W8RMH.....1456- 98-14- ABCD

W8DX.....1144- 78-13- ABCD

WSUMI.....488- 56- 8-BC

W8NOH.....366- 61- 6-B

W8GNN.....255- 51- 5-B

W8RWW.....204- 51- 4-B

W8XJU.....212- 53- 4-B

W8DDO.....172- 43- 4-AB

W8NSH.....138- 46- 3-B

W8SPSN1.....123- 41- 3-B

W8GZN.....120- 40- 3-B

W8GYU.....117- 39- 3-B

W8BYU.....114- 38- 3-B

W8DVI.....105- 35- 3-B

W8NPNX.....84- 28- 3-B

W8GONS.....66- 22- 3-B

W8GWA.....48- 16- 3-B

W8RFW.....24- 6- 4-A

*Ohio*

W8BFG.....2961-132-21- ABCD

W8LPD.....1573-116-13-ABC

W8SRB.....790- 79-10-AB

W8SFG.....780- 78-10-B

W8HOH.....712- 88- 8-ABC

W8N8RM/W8N8M1.....490- 65- 7-BCD

W8DRN.....371- 53- 7-AB

W8LAW.....348- 58- 6-B

W8BMO.....315- 55- 5-ABC

W8OMK.....290- 58- 5-B

W8UJ.....276- 46- 6-AB

W8GGH.....270- 54- 5-B

W8BAV.....245- 48- 5-BC

W8N8PZH.....196- 49- 4-B

W8ZSX.....164- 41- 4-B

W8KOM.....156- 52- 3-B

W8QLB.....88- 22- 4-AB

W8LCY.....84- 21- 5-B

W8DPW.....76- 38- 5-B

W8NRQV.....75- 25- 3-B

W8N8NHU.....27- 27- 1-B

W8KKE.....26- 13- 2-B

W8HUA.....24- 12- 2-B

W8NAF.....23- 23- 1-B

W8WUP.....18- 18- 1-C

W8VLC.....13- 13- 1-B

W8SDJ/8 (W8s MVA SDJ  
WN8QU) 184- 46- 4-B

W8FGO (W8FG W9FRM)  
99- 33- 3-B

**HUDSON DIVISION**

*Eastern New York*

W2VCB.....450- 45-10-B  
KN2HPN/2.....200- 40- 5-B  
W2PKY.....120- 24- 5-B  
KN2DRV.....60- 20- 3-B  
W2YIK.....54- 18- 3-B  
W2IP.....30- 10- 3-B

*N. Y. C.-L. I.*

W2KIT.....900-100- 9-B  
W2FYQ.....861-123- 7-B  
W2DLO.....600- 60-10-AB  
W2CLO.....525-105- 5-B  
W2KIR.....468- 78- 6-B  
W2GMT.....450- 90- 5-B  
W2BNX/2.....345- 69- 5-B  
K2IEJ.....308- 77- 4-B  
W2JBQ.....300- 90- 5-B  
W2KJC.....294- 71- 4-B  
W2AOD.....280- 51- 5-BD  
W2LGG.....219- 73- 3-B  
W2FBL.....129- 43- 3-B  
W2YHP.....87- 29- 3-B

K2CMV.....63- 21- 3-B  
W2WOK.....60- 30- 2-B  
KN2HJN.....56- 28- 2-B  
W2TUK.....52- 26- 2-B  
KN2DVT.....30- 15- 2-B  
W2WOF.....16- 4- 2-D  
W2JU/2 (K2s BHZ CFY EQH  
KN2s HJN HQG W2s JU  
MIQ).....195- 65- 3-B

*N. New Jersey*

W2FBZ.....4925-183-25- ABCD  
W2RGV.....4272-165-24-ABC  
K2CMB.....1722-246- 7-B  
W2WKL.....1170-130- 9-AB  
K2BJP.....396- 66- 6-B  
W2MM.....384- 48- 8-B  
KN2EIZ.....357- 51- 7-B  
W2IDZ.....234- 25- 9-ABC  
W2EVX.....132- 44- 3-B  
W2ESC/M.....114- 38- 3-B  
W2DZA.....72- 9- 4-C  
K2GTQ (KN2s EFO IBJ  
K2GTQ).....153- 51- 3-B

**MIDWEST DIVISION**

*Kansas*

W9MOX.....6- 3- 2-B

*Missouri*

W9HVW.....77- 11- 7-AB  
W9HHD.....75- 15- 5-B  
W9QMF.....48- 12- 4-B

**NEW ENGLAND DIVISION**

*Connecticut*

WIHDQ3.....4470-135-30- ABCD  
WIKHL.....2295-135-17-AB  
WISPX.....1520- 90-16- ABD  
WIPHR.....1470- 93-15- ABD  
WIVLK.....520- 61- 8- ABD  
WIYDM/1.....426- 71- 6-B  
WIZDP3.....390- 65- 6-B  
WITXI.....315- 63- 5-B  
WNIYUX1.....284- 71- 4-B  
WNIZGP.....276- 69- 4-B  
WIKHM.....200- 40- 5-AB  
WIHDF.....196- 23- 7- ABCD

WIUQU.....168- 56- 3-B  
WIULY.....160- 40- 4-B  
WIRMU.....156- 39- 4-B  
WIYDS.....138- 46- 3-B  
WIYBZ.....135- 45- 3-B  
WIAW3.....132- 33- 4-AB  
WIUYP.....124- 31- 4-AB  
WISTU.....84- 28- 3-B  
WIRRY.....60- 30- 2-B  
WNIAM1.....48- 24- 2-B  
WIFLT1.....13- 13- 1-B  
WIORS (W1s ASO FMU GVK  
RFJ RON TCW URC WAF  
W1s APS BHZ ZEF ZGF  
ZNU ZTY ZZU)  
420- 84- 5-B

*Maine*

WITAM5 (W1s TAM VLU)  
72- 18- 4-A

*E. Massachusetts*

WIELP.....1469-113-13-AB  
WIAQE.....1200-120-10-AB  
WIBJN.....1120-125- 8-ABC  
WICTW.....1000- 87-10- ABD  
W1PLX.....504- 63- 8-B  
WITPZ.....428-107- 4-B  
W1JSM.....424-106- 4-B

WILMU.....384- 64- 6-AB  
WISXD.....366- 61- 6-ABC  
W1PZA/M.....300- 41- 6-ABC  
WITQE.....300- 75- 4-B  
WILYL.....292- 73- 4-B  
W1NIZEN1.....284- 71- 4-B  
WIDJ.....276- 46- 6-A  
WISIX/1.....212- 53- 4-B  
WIDBH.....204- 61- 4-B  
W1NYWE.....162- 54- 3-B  
WNIZCQ.....82- 41- 2-B  
W1YLV.....72- 24- 3-B  
WNIAYF.....62- 31- 2-B  
W1MEG.....60- 15- 4-B  
WIDOF.....54- 27- 2-B  
W1MGP/M.....51- 17- 3-A  
W1TUM/M.....51- 17- 3-A  
W1FZ/M.....39- 13- 3-B  
WICTR.....36- 18- 2-B  
W1NIZV.....15- 5- 3-B  
WILUW/M.....4- 2- 2-B  
W1QCQ/1 (W1s QCC VZQ  
WNIZOC)  
2363-132-17-ABC

*W. Massachusetts*

W1RFV.....4396-150-28- ABCD  
W1VNH.....2160-108-20-AB  
W1UAZ/1.....861-123- 7-B  
W1OAG.....273- 89- 7-B  
W1PHU.....30- 10- 3-B  
W1WRG/1 (W1s HXD RGM  
UIY WRG)  
715- 65-11-AB

*New Hampshire*

W1UIZ/1.....3933-159-23-ABC  
W1AZK.....378- 42- 9-AB  
W1PDM.....280- 40- 7-B  
W1RHM.....95- 19- 5-AB  
W1MHL/16 (W1s LUW PYM  
QMN YVB)  
8316-281-28-ABCD  
W1QMN/1 (W1s QMN RUD)  
44- 11- 4-B  
W1WUF/1 (W1s RUD WUF)  
30- 15- 2-B

*Rhode Island*

W1AJR.....1520- 95-16-AB  
W1KCS.....1339-103-13-AB  
W1ZJQ.....720- 90- 8-B  
W1SGA.....702- 78- 9-B  
W1KRR.....355- 71- 5-B  
W1NIZPH.....253- 63- 4-B  
W1VEM.....177- 59- 3-B  
W1BTV.....40- 20- 2-B  
W1NZUO.....26- 13- 2-B

*Vermont*

WIREZ/1.....546- 61- 9-B  
WIMMM.....133- 19- 7-B

**NORTHWESTERN DIVISION**

*Montana*

W7JRG.....45- 9- 5-A

*Oregon*

W7OKV/7.....168- 56- 3-B  
W7HBB.....46- 23- 2-AB  
W7NGW.....46- 23- 2-AB  
W7LNX.....26- 26- 1-AB  
W7UAB/M.....23- 23- 1-B  
W7OAY/7 (W7s JIP OAY)  
132- 44- 3-AB  
W7OTV/7 (17 operators)  
54- 27- 2-B

*Washington*

W7QKE.....220- 55- 4-AB  
W7MZS.....168- 56- 3-B  
W7JHX.....158- 52- 3-B  
W7LEE.....125- 25- 4-AB  
W7TMU.....116- 29- 4-AB

(Continued on page 132)

# V.H.F Party Results

(Continued from page 55)

W7KO.....90- 45- 2-AB  
W7UZB.....90- 45- 2-B  
W7ALU.....28- 14- 2-B  
W7QQC/7 (W7s OUI QQC  
RAP).....159- 53- 3-B  
W7BB (W7s IEE QKE)  
68- 34- 2-B

## PACIFIC DIVISION

*Santa Clara Valley*

W6YEQ... 2286-123-18-  
ABD  
W6CGA... 665-133- 5-B  
W6EDC... 585- 65- 9-AB  
W6SAW... 450- 90- 5-B  
KN6DTS<sup>1</sup>... 265- 53- 5-B  
KN6CQG... 260- 51- 5-B  
W6OTN... 210- 42- 5-B  
W6INN... 165- 33- 5-B  
W6ZBS/M... 115- 23- 5-B  
KN6EJZ... 39- 13- 3-B  
KN6DTR... 1- 1- 1-B  
W6GCG/6 (W6GCG K6BIE)  
1768-104-17-AB  
W6ZEA (W6s ODK SSA ZEA  
K6CZI)... 1260-126-10-AB

*East Bay*

W6OHQ/6... 1035-112- 9-BD  
W6JHV... 620-124- 5-B  
W6WGM (W6s AFC WGM)  
1608-134-12-AB

*San Francisco*

W6AJF... 2380-113-20-  
ABCD

*Sacramento Valley*  
W6PIV<sup>5</sup> (W6s HAN PEI PIV)  
765- 85- 9-AB  
W6EKP/6 (W6s KDJ TEE  
K6DEO KN6EWO W6EVL)  
192- 48- 4-B

*San Joaquin Valley*

W6ALW/6<sup>5</sup> (W6s ALW BHR)  
581- 83- 7-AB

## ROANOKE DIVISION

*Virginia*

W4JCJ... 413- 59- 7-B  
W4UMF... 357- 47- 7-AB(C  
W4MLR... 148- 37- 4-B  
W6LON/4... 56- 28- 2-B  
W4ERE... 30- 15- 2-B

## ROCKY MOUNTAIN DIVISION

*Colorado*

W6CNM... 315- 21-15-A  
W6FKY... 170- 17-10-A

## SOUTHEASTERN DIVISION

*Alabama*

K4WBX/4... 8- 4- 2-A

*Georgia*

W4LNG... 12- 6- 2-AB  
W4ZXA/4 (W4s KGD ZXA)  
10- 5- 2-B

**SOUTHWESTERN  
DIVISION***Los Angeles*

W6AXK/6... 212-106- 2-B  
 KN6CHK/6 (KN6s CAD CHK  
 K6BTJ W6SDW)  
 152- 76- 2-B

**WEST GULF DIVISION***Northern Texas*

W5SFW..... 777- 37-21-AB  
 W5SNX..... 12- 6- 2-B

*Southern Texas*

W5FXN..... 392- 28-14-A  
 W5SVB..... 351- 27-13-AB  
 W5EZB..... 70- 10- 7-A  
 WN5EHD..... 5- 5- 1-B

*New Mexico*

W5FPB..... 3- 3- 1-B

**CANADIAN DIVISION***Maritime*

VO6U..... 4- 2- 1-C

*Ontario*

VE3BQN.... 872-106- 8-  
 ABD  
 VE3AIB..... 792- 96- 8-  
 ABD  
 VE3DNX.... 426- 67- 6-BC  
 VE3AET..... 216- 54- 4-AB  
 VE3DHG.... 200- 50- 4-AB  
 VE3BOW.... 180- 45- 4-B  
 VE3DER.... 180- 36- 5-AB  
 VE3BMB.... 132- 44- 3-B  
 VE3QT..... 40- 20- 2-B  
 VE3BQT.... 32- 16- 2-A  
 VE3DGF.... 26- 13- 2-AB  
 VE3DPG.... 26- 13- 2-B  
 VE3DOJ.... 22- 22- 1-A

*Quebec*

VE2AOK.... 60- 12- 5-B

*British Columbia*

VE7ASM/7.. 176- 22- 8-AB  
 VE7JG/7.... 96- 32- 3-B  
 VE7FJ..... 42- 14- 3-B  
 VE7CM..... 20- 10- 2-B  
 VE7DH..... 5- 5- 1-B

<sup>1</sup> Novice award winner. <sup>2</sup> W9DRN, opr. <sup>3</sup> Hq. staff — not eligible for award. <sup>4</sup> W1YNC, opr. <sup>5</sup> Multiple-operator station — not eligible for single-operator award. <sup>6</sup> Multiple-operator award winner.