

Results, 18th ARRL DX Contest

YOU can't keep a DX man down! After the contests held during the lush years of the sunspot cycle when propagation conditions were at their best and DX signals found their way around our globe with ease, the months of February and March seemed quite a letdown to participants in the 18th ARRL International DX Competition. Less hardy souls would have given up the ghost and settled down to local ragchewing. Not so with the DX brethren! In spite of relatively poor band conditions, with 10 and 11 meters useless at times for long-distance contacts, participants in the 1952 contest showed they could take the good with the bad and produced a crop of many noteworthy 'phone and c.w. scores.

Competition for awards was confined to participants within each ARRL mainland section and in each country outside the W/VE/VO area submitting qualifying entries. Special certificates are being awarded to 68 c.w. operators and 55 'phone operators in the U. S.-Canada area. Outside W/VE/VO, 64 c.w. and 39 'phone awards are being made. Three multiple-operator stations, all in the U. S. area, will also receive certificate awards. The calls of all winners are listed in the accompanying score tabulations. Hearty congratulations to the victors!

The C.W. Section

For many years the top c.w. score reported in the W/VE area has come from an eastern U. S. station. From the first post-World War II contest in 1947 until 1951, the highest totals came from W2, W2, W8, W3 and W3, in that order. Ben Holloman, W5ENE, of Dallas, Texas, apparently set out in 1952 to show that it *can* be done from other areas. His multiplier of 202 and 422 contacts earned a final score of 255,732 points and a comfortable lead on the rest of the field. During 81 hours of contest operation, W5ENE worked 97 countries. Ben used the following array of gear: separate finals and 4E27 buffers on each band, working out of an HT-18 VFO, p.p. 250THs on 27, 28 and 14 Mc., single 450THs on 3.5 and 7 Mc. Antennas were three-element rotaries on 14, 27 and 28 Mc. and ground planes on 3.5 and 7 Mc. His receiver was an HRO.

Another contestant who has been chalking up some fancy scores in DX contests the last few years was next in line. Jim Ringland, W8JIN, tallied 410 contacts with 85 countries, a multiplier of 193 and 237,390 points in 84 hours of operation. His contest rig consisted of a 310-B exciter driving an 813 and p.p. 250THs. A plenti-

ful assortment of antennas was used: wide-spaced rotary arrays, with three elements on 14 Mc. and four on 28 Mc., a ground plane and a doublet on 3.5 Mc., vertical 8JK beam and doublets on 7 Mc.

A total of 220,458 points, from 406 contacts and 181 multiplier, gave W3DHM the third highest c.w. score in the W/VE area. Credit for this fine performance goes to Mel Wardell, W3DGM, the operator of W3DHM during the contest. The transmitting layout at DHM utilized p.p. 806s and three-element rotaries on 14, 27 and 28 Mc., p.p. 833As and doublets on 3.5 and 7 Mc.

Following the first three high scorers, each with a score over 100,000 points, were W2WZ 205,740, W4KFC 196,116, W8WZ 194,940, W3LTU 184,214, W9LM 162,771, W8BTI 158,100, W4ESK 156,006, W4BGO 155,925, W6MVQ 150,174, W4BRB 142,749, W4CEN 138,600, W3GHD 137,259, W3PDX 134,505, W5ZD 127,458, W1LOP 123,954, W3GHS 120,555, W5CKY 118,854, W1NMP 117,612, W0DAE 110,970, W9RQM 106,524, W1AXA 104,895, W3GRF 104,538, W6TT 103,752, W3FGB 101,010.

The following tabulation lists the high scorer in each U. S. and Canadian licensing area:

W1LOP	123,954	W0DAE	110,970
W2WZ	205,740	VE1PA	29,784
W3DHM	220,458	VE2WW	88,893
W4KFC	196,116	VE3W	80,678
W5ENE	255,732	VE4RO	92,400
W6MVQ	150,174	VE5QZ	10,200
W7PGS	94,065	VE6MN	7128
W8JIN	237,390	VE7VO	41,904
W9LM	162,771	VO2G	64

Leaders in number of contacts were W5ENE 422, W8JIN 410, W3DHM 406, W2WZ 381, W4KFC 371, W8WZ 361, W3LTU 357, W9LM 337, W4ESK 321, W4BGO 315, W4BRB 311, W6MVQ 310, W4CEN 308, W3PDX 305, W3GHD 303, W8BTI 300, W1NMP 297, W5ZD 291, W3GHS 285, W1LOP 283, VE4RO 282, W5CKY 279, W0DAE 274, W1BFT 270, W9RQM 269, W3GRF 266, W6TT 262, W1AXA 259, W3FGB 259, W8DX 256, W3IYE 251, W7PGS 251, W6FSJ 250, W9DUY 250.

Ben Holloman, W5ENE, walked off with top c.w. honors in the U. S.-Canada area and won the Northern Texas c.w. award for the fifth consecutive year.

October 1952

From October 1951





Katashi Nose, KH6IJ, outstanding c.w. and 'phone scorer, didn't use this bottle during the contest, although his rotary might have made it sound that way.

Highest multipliers (sum of countries worked totals for each band) in W/VE/VO: W5ENE 202, W8JIN 193, W3DHM 181, W2WZ 180, W8WZ 180, W4KFC 177, W3LTU 172, W4BGO 165, W4ESK 162, W6MVQ 162, W9LM 161, W8BTI 155, W4BRB 153, W3GHD 151, W4CEN 150, W3PDX 147, W1LOP 146, W5ZD 146, W5CKY 142, W3GHS 141, W1AXA 135, W8GHW 135, W0DAE 135, W1NMP 132, W6TT 132, W9RQM 132, W3GRF 131, W3FGB 130, W3ALB 129, W4HQN 139, W3IYE 128, W7PGS 125, W6FSJ 124, W3BVN 123, W1BFT 121, W2GGL 120.

The top score among participants outside the United States and Canada came from Dick Spenceley, KV4AA. Dick racked up 2015 QSOs, multiplier of 90 and 541,890 points. KV4AA poured a potent signal into W/VE with only 300 watts to four 4D22s on 3.5, 7, 14, 27 and 28 Mc.; on 160 meters input ran 175 and 50 watts to a pair of 4D22s. The ever-popular three-element rotaries were used on 14, 27 and 28 Mc., a 7-Mc. Zepp for 3.5 and 7 Mc., and a 240-foot wire on 150. Receiving was handled by two HQ-129s.

Especially outstanding from the standpoint of contacts per hour was the contest performance of Gordon Fisher, KG4AF, second high scorer outside W/VE/VO. Gordon logged more contacts than any other participant: 2085, at the average rate of 32.6 per hour. A close contender for the top score, he tallied 518,833 points and a multiplier of 83. His station layout: 75A2 receiver; p.p. 4-250As on 3.5, 7 and 14 Mc., Johnson Viking for 27-28 Mc. and 160; three-element wide-spaced beam on 14 Mc., 280-foot center-fed for 3.5, 7, 14, 27, 28 Mc. and 160 meters.

Veteran DX contest participant Katashi Nose, KH6IJ, came through next in line with 333,918 points, 1427 QSOs and 78 multiplier. If the number of 589 and 599 reports in Katashi's log is any indication, KH6IJ was really jarring plenty of receivers in the U.S.-Canada area!

Other high scores outside W/VE/VO: KH6AEX 275,724, KH6MG 260,996, VP7NM 193,546, CO2BC 177,954, ZL1MB 171,920, KP4KD 169,443, KV4AQ 141,375, XE2OK 131,376, KH6PM 124,551, KH6DK 110,925, KZ5LY 108,918.

Outside the U.S.-Canada area, the top scorers in each continental area were: *Africa* — ZS6OW 97,392; *Asia* — JA2IM 6818; *Europe* — GW3ZV 77,996; *North America* — KV4AA 541,890; *Oceania* — KH6IJ 333,918; *South America* — PY1ADA 46,968.

Leaders in number of contacts: KG4AF 2085, KV4AA 2015, KH6IJ 1427, KH6AEX 1242, KH6MG 1228, VP9NM 1114, CO2BC 1043, ZL1MB 1028, KP4KD 843, GW3ZV 842, XE2OK 789, KH6WU 768, KH6DK 725, KV4AQ 725, FA8BG 713.

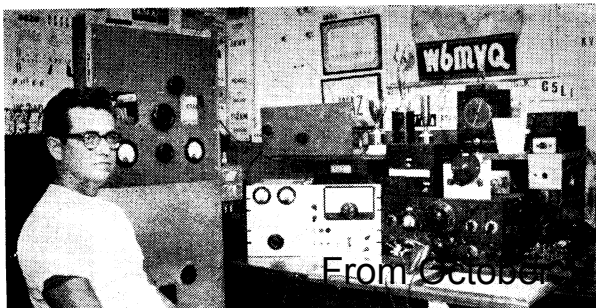
Highest multipliers following KV4AA's 90 were KG4AF 83, KH6IJ 78, KH6AEX 74, KH6MG 71, KP4KD 65, KV4AQ 65, KH6PM 63, XE1SA 63, VP7NM 58, CO2BC 57, KP4JE 57, XE2OK 56, ZL1MB 56, VK2RA 55, KZ5LY 54, VK2GW 52, KH6DK 51, ZL1MQ 50.

The 'Phone Section

Outstanding operator in the W/VE/VO 'phone category was Rush Drake, W4ESK, whose score of 149,517 points, obtained from 449 contacts and 111 multiplier, gave him a healthy lead on all other contestants. Push-pull 450THs, rotaries on 14, 27 and 28 Mc., and a ground plane on 3.85 Mc. pushed W4ESK's signal to the far corners of the earth; a 75A-1 handled the receiving end.

Joe Johnson, W6NIG, finished up with 102,951 points and was the only other 'phone entrant to top the 100,000 mark. He talked his way through 370 contacts for a multiplier of 93. Equipment line-up at W6NIG: single 450THs on 14 and 28 Mc., 304TL on 3.85 Mc., 14-Mc. three-element rotary, 28-Mc. four-element rotary; 75A-1 receiver.

Rich Lawton, W6MVQ, chalked up 310 contacts, a multiplier of 162 and 150,174 points to lead all c.w. contestants in the W6 area.



From October

52 QST © ARRL

QST for

With a healthy lead on his competitors, Rush Drake, W4ESK, scored 149,517 points to take the top 'phone position in the W/VE/VO area.

Third-place 'phone participant was Don Phillips, W3LTU, with 86,940 points (315 QSOs, 92 multiplier), followed by W1AFZ 84,252, W9RBI 75,558, W8JIN 75,423, W8BHW 49,922, W5JVF 45,975, W7DL 41,406, W7HIA 39,480, W3GHS 39,039, W3PWR 38,520, W4VAN 37,233, VE7VO 37,062, W6PYH 36,642, VE3AUJ 36,018, W5BGP 35,112, W2APU 34,452, W1CND 33,055, VE4RO 31,212, W8LIO 30,888, W3FGB 30,690.

Top score in each U. S. and Canadian licensing area:

W1AFZ	84,252	W0PRZ	58,400
W2APU	34,452	VE1CU	144
W3LTU	86,940	VE2BD	3782
W4ESK	149,517	VE3AUJ	36,018
W5JVF	45,975	VE4RO	31,212
W6NIG	102,951	VE5CX	54
W7DL	41,406	VE7VO	37,062
W8JIN	75,423		
W9RBI	75,558		

Leaders in number of 'phone contacts: W4ESK 449, W6NIG 370, W1AFZ 341, W3LTU 315, W6AM 276, W8JIN 274, W4DQH 265, W9RBI 256, W6VVZ 247, W0PRZ 246, W4OM 237, W8BHW 223, W3PWR 214, W5JVF 211, W9EWC 210, W7DL 206, W1CND 203, W4VAN 201.

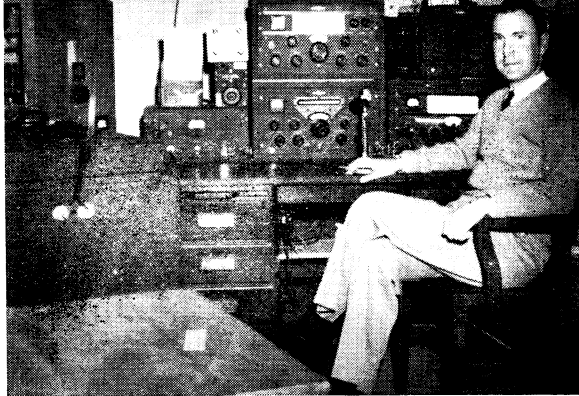
Top 'phone multiplier were those of W4ESK 111, W9RBI 98, W6NIG 93, W8JIN 93, W3LTU 92, W9EWC 87, W1AFZ 84, W4OM 84, W4DQH 81, W0PRZ 80, W6AM 78, W3GHS 77, W8BHW 76, W5JVF 75, W8LIO 72, VE7VO 71, W7HIA 70, W4GBO 69, W6VBZ 69, VE3AUJ 69, VE4RO 68, W7VVL 67, W5BGP 66, W4VAN 63, W3FGB 62, W3PYH 62, W3PWR 60.

The talents of Katashi Nose, KH6IJ, third highest c.w. entrant outside W/VE/VO, are not confined just to brasspounding. A top-notcher with a key, he also knows how to handle a mike, as attested by his 'phone log, which showed 1022 contacts, multiplier of 52, 159,432 points. On the air for only 44 hours during the contest, KH6IJ knocked off contacts at a merry clip, averaged 23.2 per hour!

Following KH6IJ's top score was that of Syd Lashley, VP6SD, 157,990 points, a result of 884 contacts and 61 multiplier. VP6SD ran 500 watts to an 813, used beams throughout, four elements on 27 and 28 Mc., three elements on 14 Mc. and a Vee on 3.5 Mc.

Another Hawaiian, KH6AEX, cinched third place with 135,576 points. Other high-scoring

Highest W7 score, 94,065 points, was made from this very efficient-looking station layout by Warren Malory, W7PGS.



'phones: KH6MG 120,612, XE2W 93,869, TG9AD 66,861, VP6WR 57,772, ZS6DW 51,948, KP4DU 21,141, KV4AQ 20,352, TI2TG 18,381, I1BDV 15,776, KG4AF 15,148, G2PU 15,000, ZL1HY 14,976, F8SK 14,841, ZL1MQ 11,625, PY2CK 10,780, KT1DD 10,556.

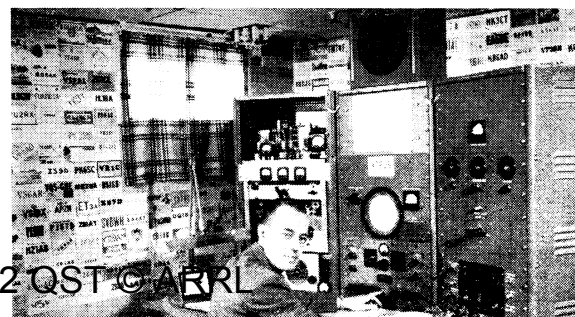
Top scorers in each continental area were: Africa — ZS6DW 51,948; Asia — JA8AB 441; Europe — I1BDV 15,776; North America — VP6SD 157,990; Oceania — KH6IJ 159,432; South America — PY2CK 10,780.

Leaders in number of W/VE/VO 'phone contacts: KH6IJ 1022, VP6SD 884, KH6AEX 807, KH6MG 708, XE2W 539, ZS6DW 481, VP6WR 448, TG9AD 393, KG4AF 364, I1BDV 311, F8SK 291, KT1DD 257, KP4DU 243, KV4AQ 212, ZL1HY 208, G2PU 200.

High multipliers: VP6SD 61, XE2W 59, KH6MG 57, TG9AD 57, KH6AEX 56, KH6IJ 52, VP6WR 44, ZS6DW 36, TI2TG 33, KV4AQ 32, KP4DU 29, G2PU 25, ZL1MQ 25, KH6DK 24, ZL1HY 24, PY2CK 22.

Club Scores

As in the 17th ARRL DX Contest, the competition this year for the special gavel award, offered to the radio club whose members submitted the highest aggregate score, resulted in a close race between the Frankford Radio Club of Philadelphia and the Potomac Valley Radio Club. Frankford succeeded in gaining the lead and wins its fifth DX Contest club award. The Northern California DX Club, fifth in the previous affair, pulled up to third and will bear watching next year. A tabulation showing the scores of the twenty-nine other clubs that entered the competition accompanies this report. Special certificates are being awarded to the leading 'phone and c.w. operators in each club that submitted the minimum number of entries required by the rules for individual awards.



Sidelights

"Conditions spotty — 7 Mc. wonderful on second week end — heard five continents rolling in at one time." — *W2FBA*. . . "Conditions were the worst yet since the war, but despite that and a power cut here the first week end it was another good contest with a high standard of operating on the part of the Ws and VEs. Many thanks for the party." — *ZE3JP*. . . "Sure was a good contest. Got seven new ones with my 20/30 watts. Both 20 and 40 had good openings on at least one week end. Worked KG4AF and KV4AA on three bands." — *W8EXZ*. . . "It was the first time I took part in the contest, even though I have been licensed for many years, but it will not be the last time." — *OZ8F*. . . "Had lots of fun as usual. It's still as big a thrill as ever and the best contest for my money." — *W2JME*. . . "I am always amazed at how the Ws and VEs pick out my 20-watt signal when conditions and QRM are so bad!" — *HB9CI*. . . "Many DX stations have better signals than they think. Matters could be speeded up considerably if they called and signed less. DX stations should always give W or VE a call for check after the serial number. Many times we can't hear the comeback in a heavy line-up until the QRM dies down. These contests get better every year." — *W1ODW*. . . "I was certainly pleased at the way the W operators conducted themselves. Only at the beginning of the contest did I encounter any confusion, that is, stations calling me while I was transmitting to another station." — *VP9AL*. . . "Had fun. Bet I was the only participant running 40 watts input in the U. S. who called ZL1MB once, signed once, and worked him in a pile-up!" — *W7CWN*. . . "It was a fine contest. The low frequencies really came into their own this year." — *W6GAL*. . . "This annual event is certainly the tops so far as we are concerned and let us hope it will continue for many years to come." — *VE3DT*. . . "Lots of fun. Your choice of times and splitting the contest into consecutive week ends for 'phone and c.w. with time break between was FB." — *W6PYH*.

Disqualifications

The following entrants are deemed ineligible for contest listings or awards in the 18th ARRL International DX Competition. In each case disqualification is for off-frequency operation as confirmed by one or more FCC citations or ad-

visory notices or two accredited ARRL Official Observer measurements: *C.w.*: W4BPD, W4EEO, W4FKA, W6MUF, W6YRA, W9GIL, LU4CE, LU4ZI, ZS6OS. 'Phone: W1ATE, W1JFG, W2SKE, W3ALB, W3DHM, W4KWY, W6CYI, W6YRA.

— — — —

The dates of the 19th ARRL International DX Competition will be announced in November *QST*. It isn't too early to start making your preparations for taking part. Get those antennas and rigs tuned up now!

SCORES

Eighteenth International DX Competition

Operator of the station first-listed in each section and country is winner for that area, unless otherwise indicated. . . . The multiplier used by each station in determining score is given with the score — in the case of U. S.—Canada this is the total of the countries worked on each frequency band used; in the case of non-W/VE/VO entries it is the total of the U. S.—Canada districts worked on each band. . . . The number of contacts established is next listed. . . . The letters A, B, and C approximate the input to the final stage at each station; A indicates power up to and including 100 watts; B indicates over 100 watts, up to and including 500 watts; C indicates over 500 watts. . . . The total operating time to the nearest hour is given for each station and is the last figure following the score. . . . Example of listings: W3DHM 220,458-181-406-C-74, or final score 220,458; multiplier 181; 406 contacts; power over 500 watts; total operating time 74 hours. . . . Stations manned by more than one operator are grouped in order of score following single-operator station listings in each section or country tabulation; calls of participants at multiplier stations are listed in parentheses. . . . Where three or more multiplier entries are listed, the top-scoring station is being awarded a certificate. . . . The scores of 'phone entrants whose work was exclusively in the 10- and/or 11-meter bands are listed with an asterisk.

C. W. SCORES

ATLANTIC DIVISION		<i>W3EIS</i> 48,267-93-173-B-43
<i>E. Pennsylvania</i>		<i>W3WV</i> 33,516-76-147-C-
<i>W3DHM</i> 220,458-181-406-C-74	<i>W3SP1</i> 24,384-64-129-B-43	<i>W3MFI</i> 24,072-68-118-B-42
<i>W3LTI</i> 184,212-172-357-C-76	<i>W3JYS</i> 22,940-62-124-C-	<i>W3JYS</i> 22,940-62-124-C-
<i>W3GHD</i> 137,259-151-303-B-7	<i>W3ZQ</i> 21,390-62-115-B-45	<i>W3CZD</i> 20,670-65-106-A-33
<i>W3CHS</i> 120,553-141-285-B-57	<i>W3LUL</i> 17,976-56-107-B-25	<i>W3FOB</i> 17,226-58-99-A-35
<i>W3FGP</i> 101,010-130-259-B-53	<i>W3ALV</i> 15,345-55-93-B-20	<i>W3WPR</i> 13,585-55-83-B-38
<i>W3ALB</i> 92,880-129-240-C-50	<i>W3JTK</i> 10,656-48-74-C-12	<i>W3AEI</i> 9,585-45-71-B-15
<i>W3MFW</i> 42,722-82-175-C-48	<i>W3EPR</i> 13,585-55-83-B-38	<i>W3JTC (W6AVM)</i> 186,732-171-364-C-86
<i>W3CGS</i> 37,422-77-162-C-35	<i>W3JTC</i> 10,656-48-74-C-12	<i>W3FQZ (W3VES)</i> 109,692,132-277-C-65
<i>W3EQA</i> 30,420-73-130-C-24	<i>W3AEI</i> 9,585-45-71-B-15	
<i>W3ALX</i> 29,394-71-135-B-10	<i>W3CDG</i> 3,780-28-45-B-22	
<i>W3MLW</i> 22,860-60-130-B-49	<i>W3LVJ</i> 3,612-28-43-A-10	
<i>W3ADZ</i> 21,240-60-118-C-25	<i>W3VES</i> 192-8-8-A-1	
<i>W3MDE</i> 15,300-51-100-B-35	<i>W3VEV</i> 27-3-3-A-4	
<i>W3IMV</i> 14,580-45-108-B-30	<i>W3JTC (W6AVM)</i> 186,732-171-364-C-86	
<i>W3EVW</i> 12,513-43-97-C-13	<i>W3FQZ (W3VES)</i> 109,692,132-277-C-65	
<i>W3CPS</i> 11,745-45-81-B-30		
<i>W3NA</i> 10,920-40-91-B-17		
<i>W3HER</i> 10,032-44-76-B-20		
<i>W3QLW</i> 8,778-38-77-B-24		
<i>W3RFI</i> 5,460-35-72-B-15		
<i>W3CHH</i> 3,321-27-41-B-		
<i>W3QDR</i> 1,843-19-33-B-6		
<i>W3BES (W3s EKK, LVB)</i>		
<i>W3CTH (W3BXE)</i> 136,335-149-305-C-87		
<i>W3KTT (W3OVV)</i> . 94,815-129-245-C-		
<i>W3ITW (W3BIP)</i> . 29,182-74-131-B-40		
<i>Md.-Del.-D. C.</i>		
<i>W3PDX</i> 134,505-147-305-B-76	<i>W2DSB</i> 67,536-112-201-C-57	<i>W2UWD</i> 59,220-94-210-C-50
<i>W3GRF</i> 104,538-131-266-B-75	<i>W2FRA</i> 31,590-78-135-B-17	<i>W2TVR</i> 22,680-63-120-B-40
<i>W3IYE</i> 96,384-128-251-C-47	<i>W2BHJ</i> 20,313-61-111-B-51	<i>W2SVF</i> 17,543-53-111-C-
<i>W3BVN</i> 86,346-123-234-B-48	<i>W2RWE</i> 17,172-54-106-B-24	<i>W2AW</i> 16,524-54-102-B-23
<i>W3MSK</i> 66,144-104-212-C-40	<i>W2PZM</i> 7,548-37-68-B-20	<i>W2ICE</i> 7,515-45-57-C-
<i>W3AOD</i> 54,684-96-186-B-31	<i>W2QJM</i> 7,215-37-65-B-23	<i>W2TXB</i> 6,090-35-58-C-
<i>W3DRD</i> 51,381-99-173-B-46		

So. New Jersey

W. New York

Dick Morse, W1AFZ, logged 341 'phone contacts and tallied 84,252 points for the leading W1 score and the fourth highest in the W/VE area.

QST for

1952 QST © ARRL



CLUB SCORES

Club	Score	C. W. Winner	'Phone Winner
Frankford Radio Club	1,846,672	W3DHM	W3LTU
Potomac Valley Radio Club	1,502,427	W4KFC	W4ESK
Northern California DX Club	1,226,620	W6MVQ	W6NIG
Maul Amateur Radio Club	1,121,939	KH6AEX	KH6AEX
Southern California DX Club	903,943	W6FSJ	W6AM
Ohio Valley Amateur Radio Assn.	506,876	W8JIN	W8OHS
The DX Club	275,184	W8GHS	W8BRA
Westpark Radios	212,566	W8BWC	
Greater Cincinnati Amateur Radio Assn.	212,566		
Ridgewood Amateur Radio Club	193,647	W2GNQ	W2GNQ
Connecticut Wireless Assn.	169,340	W1TX	
Chicago Suburban Radio Assn.	163,779		
West Seattle Amateur Radio Club	154,806		
Four Lakes Amateur Radio Club	144,042	W9LNM	
Dayton Amateur Radio Assn.	142,920		
Union de Radioaficionados Espanoles	129,023	EA1AB	
Dade Radio Club	124,385	W4LVV	
Winnipeg Amateur Radio Club	123,612		
Providence Radio Assn.	140,013		
Niles Amateur Radio Club	98,559	W2FBA	
Rochester DX Assn.	94,143		
San Antonio Radio Club	71,409	F8VJ	
Reseau des Emetteurs Francais	65,191		
Butte Amateur Radio Club	56,850		
Montreal Amateur Radio Club	39,723		
Deutscher Amateur Radio Club	28,926		
Tri-County Amateur Radio Club	20,730		
Milwaukee Radio Amateurs Club	18,684		
Sveriges Sandareamatörer	16,785	SM3AKM	
South Shore Amateur Radio Club	10,917	W1DDO	
John Lyme Beer, Chowder & Propagation Society	2895	W1VIG	
Jamestown Amateur Radio Club	625		

W2SAW	6042-38-53-B-28
W2MA	5355-35-51-C-10
W2RJJ	4704-28-56-B-21
W2KXE	26,130-6-13-A-19
W2VXA	1326-17-26-B-6
W2TKG	240-8-10-A-7
W2FXA	45-3-5-A-1

W. Pennsylvania

W3LFF	30,552-76-134-B-48
W3AAK	27,117-69-131-C-43
W3APF	8802-54-55-A-30
W3NCF	7881-37-71-B-35
W3RNO	5376-23-64-B-26
W3NJC	432-12-12-B-6
W3JSH	192-8-8-B-5

CENTRAL DIVISION

Illinois

W9LM	162,771-161-337-C-83
W9NII	69,336-107-216-C-73
W9TB	47,724-82-194-C-4
W9EYK	25,956-58-144-B-50
W9FKC	18,762-53-118-C-32
W9HUZ	17,271-57-101-B-46
W9TGB	16,074-47-114-B-28
W9ESD	15,345-55-93-C-21
W9GMZ	14,352-52-92-B-27
W9ALI	8892-39-76-B-20
W9PNE	7872-41-64-B-30
W9WIO	3240-27-40-B-15
W9HCV	1008-14-24-C-11
W9VPD	612-12-17-C-5

Indiana

W9DUY	87,750-117-250-C-38
W9HUV	57,927-92-B-50
W9NH	15,300-51-100-B-1
W9UC	4320-32-45-B-16
W9JIP	2808-24-39-C-18
W9YDP	234-6-13-B-7

Wisconsin

W9RQM	106,524-132-269-C-58
W9LNM	55,872-96-194-B-68
W9FDX	9072-42-72-B-24
W9CWK	7254-39-62-A-30
W9RKP	3564-27-44-B-10
W9GKK	3510-26-45-B-15
W9RBI	1848-22-28-C-4

DAKOTA DIVISION

No. Dakota

W0EOZ	12,015-45-89-C-29
W0DBN	540-10-18-B-3
W0BPO	15-3-3-A-3

So. Dakota

W0BLZ	12,348-49-84-B-32
W0WUU	231-7-11-B-10

Minnesota

W0TKX	58,176-96-202-B-50
W0YCR	24,300-60-135-C-1
W0JSN	17,856-62-96-B-48
W0RXL	16,008-58-94-C-2
W0VIP	6300-35-60-B-22
W0DGH	2457-21-39-B-8

DELTA DIVISION

Arkansas

W5DRW	7020-39-60-B-21
-------	-----------------

Louisiana

W5KC	41,448-88-157-B-38
W5CCG	3270-30-39-C-13
W5CEW	1275-17-25-B-1

Mississippi

W5ZD	127,458-146-291-C-73
W5CKY	118,854-142-279-C-60
W5AVF	9016-49-62-B-24

Tennessee

W4NNH	69,960-106-220-B-38
W4DQH	61,490-110-222-C-53

GREAT LAKES DIVISION

Kentucky

W4KTC	12,720-53-80-B-22
-------	-------------------

Michigan

W8DX	90,506-118-256-C-75
W8CVU	68,364-108-211-B-49
W8ZU	25,389-63-135-A-40
W8YIN	18,270-58-105-A-42
W8AAI	15,435-49-105-B-24
W8UPN	9009-39-77-C-13
W8QZY	5580-30-62-B-1
W8EKZ	3690-30-61-A-20
W8KPL	1863-23-27-B-4
W8HA	594-11-18-A-17
W8HLH	297-9-11-A-14
W8DUS (W8 TOP, RAE, UPN)	85,304-124-232-C-90

Ohio

W8JIN	237,390-193-410-C-84
W8WZ	194,940-180-361-C-76
W8BTI	158,100-155-300-C-66
W8BHW	87,210-135-216-C-35
W8ACE	84,870-115-246-C-54
W8ZJM	56,070-105-178-B-51
W8BWC	42,066-82-171-C-50
W8HFE	40,014-78-171-C-30
W8DSS	37,040-90-155-C-1
W8SMC	26,625-71-125-B-31
W8FUD	24,478-58-142-C-55
W8BOJ	22,311-67-111-C-16
W8PMM	21,504-64-112-B-38
W8RSP	20,522-62-111-B-25

W8CEG	18,762-59-106-B-36
W8AJW	17,472-56-104-A-1
W8FJR	7686-42-61-A-21
W8DQC	6612-38-58-B-20
W8EBZ	5394-31-58-B-22
W8DAE	3564-27-44-B-11
W8ZJO	1843-19-33-C-9
W8OYL	243-9-9-B-1
W8FJX	216-8-9-A-3
W8PCS	216-8-9-B-3
W8FRD	108-6-4-A-10
W8CHG	48-4-4-A-7
W8FTD	3-1-1-A-1

HUDSON DIVISION

E. New York

W2AWF	53,282-99-180-C-54
W2BYP	47,502-91-174-C-42
W2HO	31,959-67-159-B-52
W2CJM	19,620-60-109-B-36
W2GLM	8510-37-79-C-10
W2NRD	546-13-14-A-8

N. Y. C. L. I.

W2WZ	205,740-180-381-C-75
W2WC	54,075-103-175-B-48
W2AZS	39,933-71-121-C-47
W2CTO	27,813-73-127-B-30
W2KTF	23,460-68-116-B-27
W2ARE	14,382-51-94-B-26
W2CTL	13,008-48-91-B-38
W2DNZ	7452-36-69-C-25
W2AHC	3132-29-36-B-13
W2JB	2394-21-38-C-7
W2BYN	1501-19-27-A-14
W2ZQW	1275-17-25-B-12
W2BOT	648-12-18-B-7

No. New Jersey

W2JME	65,296-106-212-B-47
W2GNQ	47,250-90-175-C-30
W2EQS	45,066-87-176-B-80
W2ATE	39,060-84-155-B-22
W2CJJ	33,033-77-143-B-80
W2HFP	28,880-64-140-C-30
W2YTH	25,134-59-142-B-32
W2DJT	22,848-68-112-B-39
W2JKH	13,083-49-89-B-19
W2CDP	5994-37-54-B-1
W2NLY	5508-36-51-A-25

W2CWK	4725-35-45-A-1
W2ADP	3393-29-39-A-19
W2JMC	3168-24-44-B-10
W2EIK	1560-20-27-A-9

MIDWEST DIVISION

Iowa

W0FZO	4650-31-50-B-15
W0NWX	4030-31-44-B-1
W0DON	450-10-15-B-28
W0DIB	108-6-6-B-1
W0EHL	3-1-1-A-5

Kansas

W0DAE	110,970-135-274-C-54
W0ERI	15,912-52-102-C-25
W0IUB	2574-22-39-B-14
W0VBQ	1767-19-31-B-7
W0AEP	1710-19-30-A-15
W0DEP (W0CMY)	2376-22-36-B-14

Missouri

W0DU	8103-37-73-B-20
W0ETW	168-7-8-A-1
W0KJK	56-3-4-A-9
W0AIR (W0FNO)	90,670-119-254-C-75

Nebraska

W0BBS	16,665-55-101-C-36
W0NFX	462-11-14-B-12

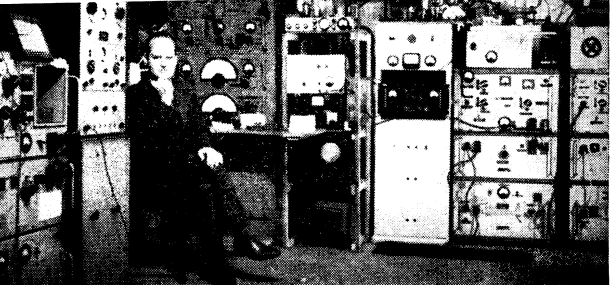
NEW ENGLAND DIVISION

Connecticut

W1LOP	123,954-146-283-C-65
W1NMP	117,612-132-297-C-71
W1TX	74,015-113-230-C-50
W1FTX	50,904-101-168-B-50
W1ODW	47,748-92-173-B-64
W1BIL	37,062-87-142-C-30
W1DIT	20,032-64-105-C-27
W1ATO	14,025-55-85-B-29
W1DEP	8880-40-74-B-23
W1DHO	5376-32-56-B-64
W1NIM	3393-29-39-B-5
W1RWS	3219-29-37-A-12

One of two 'phone operators to go over the 100,000-point mark, Joe Johnson, W6NIG, earned honors as the second highest 'phone scorer in the U. S.-Canada area.





No shortage of gear here! J. Banner, GW3ZV, used much of it to good advantage, scored 77,996 points to lead in the European area.

WIVG..... 2025-25-27-A-4
WIRY..... 1932-23-28-B-4
WIKK..... 867-31-17-B-4
WIOIS..... 720-15-16-A-5
WIBUD..... 3-1-1-A-4

Maine

WIDPJ..... 46,440-86-180-C-59
WIFAP..... 23,664-58-136-B-40
WIDFQ..... 8400-35-8-A-32
WIEIO..... 7740-36-72-B-48

E. Massachusetts

W1AXA..... 104,895-135-259-C-78
WIBOD..... 64,872-106-204-B-42
WIMX..... 59,590-101-198-C-2
WITW..... 29,400-70-140-C-24
WIDSF..... 5467-31-59-B-4
WIDDO..... 4123-32-43-A-16
W1JNV..... 4125-25-55-C-4
W1ONP..... 3102-22-47-A-30
W1ONV..... 2448-24-34-B-50
W1ICA..... 588-14-14-A-14
WISFC..... 216-9-9-A-2
W1PLJ..... 75-5-5-A-4

W. Massachusetts

W1JLT..... 45,924-86-178-B-56
W1JTH..... 7500-50-50-A-4

New Hampshire

WIBFT..... 98,010-121-120-A-4
WIFZ..... 22,659-57-129-A-4
W1AQQ..... 18,900-50-126-B-17
W1NHJ..... 9120-40-76-B-8
W1JTY..... 2706-22-41-B-12

Rhode Island

WIBIL..... 64,890-105-206-C-51
W1CJH..... 47,250-90-175-B-8
W1MIL..... 39,123-81-161-B-50
W1AWE..... 12,285-45-95-B-8

Vermont

W1RWP..... 11,610-45-86-B-35
W1BJP..... 3075-25-41-B-12

NORTHWESTERN DIVISION

Idaho

W1IY..... 312-8-13-B-16

Montana

W7KVU..... 54,144-94-192-C-52
W7FLB..... 2706-22-41-B-12

Oregon

W7HXG..... 69,642-106-219-C-65
W7AHX..... 25,728-67-129-B-45
W7DAA..... 18,144-54-122-C-42
W7ENW..... 6120-34-60-B-11
W7LNG..... 5568-32-58-B-30
W7JLU..... 1683-17-33-A-2

Washington

W7POE..... 41,998-83-170-B-54
W7CNM..... 21,240-59-120-B-48
W7JAS..... 20,862-57-122-C-58
W7NLI..... 11,985-47-85-C-20
W7LEW..... 10,209-41-83-A-19
W7BDW..... 9389-41-77-C-28
W7KIL..... 8019-33-81-B-25
W7EVS..... 3874-24-51-B-18
W7OPO..... 3375-25-45-B-14
W7ESM..... 1767-19-35-B-23
W7CWN..... 135-5-9-A-4
W7DIL (W7S, RT)..... 113,400-135-280-C-92
W7FYN (W7DXQ, W7YBX/7)..... 26,130-65-134-C-72

PACIFIC DIVISION

Nevada

W7KEV..... 14,256-54-88-B-27
W7KIO..... 5472-32-57-B-19

Santa Clara Valley

W6SR..... 35,112-77-152-B-55
W6HOC..... 21,804-69-166-B-60
W6VDG..... 19,668-66-100-C-28
W6PBY..... 63-3-7-C-1
W6VE (W6DZ)..... 59,500-100-190-C-56
W6EAE (W6VDC)..... 19,964-62-108-C-33

East Bay

W6MVQ..... 150,174-162-310-C-79
W6T1..... 103,752-132-262-C-42
W6PBB..... 73,776-116-212-C-79
W6LDD..... 42,585-85-167-C-80
W6QDE..... 18,315-55-111-C-25
W6IDY..... 12,348-49-84-C-17
W6EJA..... 8190-39-70-B-22
W6T1..... 6534-33-66-C-20
W6LMLZ..... 6528-34-64-B-10
W6T1..... 5490-30-61-B-21
W6KEX..... 2525-25-47-B-9
W6MHB..... 1944-18-36-B-14
W6NIG (W6S CTL, KEK, RRG, UZX)..... 134,505-147-305-C-92

W6PYY (W6S GIZ, MEK)..... 85,668-118-242-C-38
W6CTL (W6JK)..... 432-8-18-C-3

San Francisco

W6WB..... 85,323-119-239-C-4
W6RBQ3..... 68,860-110-209-C-9
W6ATO..... 45,494-86-177-C-8
W6CPB..... 18,981-57-111-B-43
W6HON..... 6237-33-63-B-21
W6ERS..... 312-8-13-A-4

Sacramento Valley

W6EFM..... 39,525-85-155-C-57
W6OCQ..... 20,679-61-113-B-72
W6BIL..... 835-15-19-B-18
W6VBI..... 75-5-5-B-22

San Joaquin Valley

W6LCX..... 31,098-73-142-B-40
W6GWH..... 27,216-72-126-C-38
W6BYH..... 12,006-46-87-C-17

ROANOKE DIVISION

North Carolina

WACEN..... 138,600-150-308-B-52
WAKE..... 69,264-104-222-C-58
W4CJZ..... 26,800-70-128-B-21
W4MZF..... 14,500-54-90-B-40
W4OG..... 6660-37-60-C-18
W4IZR..... 4131-27-51-B-10
W4REZ..... 2325-25-31-A-12

South Carolina

W4DNR..... 2346-23-34-B-11

Virginia

W4KFC..... 196,116-177-371-C-71
W4ESK1..... 156,006-162-321-C-4
W4HON..... 87,462-128-228-C-60
W4OM..... 54,324-92-199-C74
W4VE..... 54,144-94-192-C-52
W4SZY..... 54,054-99-182-B-70
KAWCC..... 14,025-55-85-C-12
WARSS..... 10,384-44-83-C-80
WARNP..... 1136-16-25-B-15
W4GQL..... 540-12-15-B-6

West Virginia

W8CDV..... 2068-22-32-A-29
W8FVU..... 1520-20-26-B-37

ROCKY MOUNTAIN DIVISION

Colorado

W0AZT..... 32,604-76-143-C-8
W0FSJ..... 1395-15-31-B-28

Utah

W7NCO..... 2247-21-37-B-23

Wyoming

W7PFS..... 94,065-125-251-C-53

SOUTHEASTERN DIVISION

Alabama

W4HA..... 144-6-8-B-1

E. Florida

W4RRB..... 142,749-153-311-C-75
W4LVV..... 43,788-89-166-B-60
W4FPK..... 39,516-89-148-B-26
W4AZZ..... 22,968-66-116-C-24
W4SAT..... 10,957-47-77-B-60
W4DRK..... 3746-27-46-B-35
W4TRP..... 3530-28-38-C-4

W. Florida

W4BGO..... 155,925-165-315-C-80
WANN..... 20,988-66-106-B-43

Georgia

W4BBP..... 52,164-92-189-B-4
W4CTA..... 3189-26-41-B-28

SOUTHWESTERN DIVISION

Los Angeles

W6FSJ..... 93,000-120-250-C-63
W6EPZ..... 81,396-119-228-C-60
W6DFY..... 64,842-107-202-C-34
W6RW..... 53,234-97-183-C-38
W6IBD..... 32,604-76-143-C-38
W6VPK..... 27,380-74-124-A-41
W6LER..... 26,937-73-123-C-51
W6BDP..... 20,352-64-106-A-25
W6ALQ..... 4959-29-57-C-4
W6HPB..... 4096-24-43-B-20
W6NTR..... 2583-21-41-B-7
W6HJ..... 2331-21-37-C-15
W6UQQ..... 1134-14-27-B-10
W6ID..... 1071-17-21-A-4
W6KNE..... 135-5-9-A-4
W6GAL (W6GHD)..... 201,066-186-363-C-8
W6AM (W6S ADP, BVI)..... 167,562-174-321-C-88
W6JUU (W6CUP)..... 121,407-143-283-C-70
W6LDJ (W6LHN)..... 119,328-132-302-C-4

Arizona

W7PGX..... 54,300-100-131-C-58
W7CZY..... 12,474-54-77-C-35
W7KX5/6..... 12,144-46-88-B-30
W7ENA..... 7020-36-65-A-4

San Diego

W6KYG..... 14,406-49-98-C-32
W6CAE..... 3800-25-52-C-10
W6TZB..... 3171-23-46-A-4

WEST GULF DIVISION

Northern Texas

W5ENE..... 255,732-202-422-C-81
W5BNO..... 12,852-51-84-B-30
W5AWT..... 9288-43-72-B-19
W5KJU..... 5100-34-50-C-30
W5DLC..... 2242-22-34-B-16
W5PXT5..... 360-8-15-B-8
W5IWK..... 270-6-15-B-28

Oklahoma

W5DQV..... 12,816-48-89-C-30
W5FFF..... 7800-40-65-C-16
W5FYL/5..... 276-22-38-A-9
W5LJI..... 1728-18-32-B-9

Southern Texas

W5FNA..... 64,268-111-193-C-40
W5KCR..... 12,568-48-91-B-38
W5LGG..... 6804-35-63-A-8

New Mexico

W5LFH (W5S PHO, RLY, UOC)..... 13,536-47-96-C-96

Alberta

VE6MN..... 7128-33-72-C-25

British Columbia

VE7VO..... 41,904-72-194-C-58
VE7QP..... 20,620-52-129-B-29
VE7KC..... 19,686-51-136-B-80
VE7VP..... 13,365-45-99-C-56
VE7AIT..... 729-9-27-B-4

Manitoba

VE4RO..... 32,400-110-282-C-64

Saskatchewan

VESOZ..... 10,200-40-85-A-31
VESOC..... 3321-27-41-B-4
VESCX..... 872-12-27-A-21
VESEH..... 702-13-18-A-10

AFRICA

Algeria

F48BG..... 85,520-40-713-A-65
F48RZ..... 32,085-31-345-A-4

Belgian Congo

OQ5RA..... 51,726-37-467-A-20

Canary Islands

E48BF..... 41,965-27-527-A-31

Eritrea

M13DD..... 3528-18-67-B-9

French Equatorial Africa

FQ8AE..... 9200-20-160-A-20

French Morocco

CN8AG..... 5076-12-141-A-4
CN8EX (CN8ES)..... 100,758-42-805-A-96

French West Africa

FF8AG..... 26,400-30-294-A-4

Liberia

EL2A..... 19,026-21-306-B-4

Madeira Island

CT3AA..... 8879-13-232-B-20

Southern Rhodesia

Z3JJP..... 63,640-43-501-A-44

Southwest Africa

ZS3K..... 24,102-39-206-A-13

Spanish Morocco

E49AP..... 15,100-25-203-A-13

Tangier

KTIUX..... 13,264-16-277-A-27

Union of South Africa

ZS6OW..... 97,392-48-678-A-4
ZSSU..... 49,794-43-356-A-46
ZS6HM..... 68-4-6-A-4

ASIA

Hong Kong

V56CC..... 2466-9-92-A-12

Japan

J42JM..... 6818-14-166-B-22
J42AB..... 6214-13-160-C-7

Okinawa

KR6DT..... 676-4-57-B-6

Turkey

TA2EFA..... 3324-16-74-C-4

EUROPE

Azores

CT2BO..... 12,950-25-175-A-14

Belgium

ON4QF..... 69,042-37-662-A-4
ON4RT..... 864-9-33-A-4

Channel Islands

GC4LI..... 31,948-28-383-B-40

Czechoslovakia

OK1MB..... 37,950-30-424-A-4

Denmark	
OZ1W	28,672-28-347-A-9
OZ4KX	24,544-26-315-A-49
OZ7PH	18,615-17-366-A-28
OZ3EA	16,821-21-249-A-42
OZ7BG	15,387-23-223-A-31
OZ7C	9,822-18-185-A-26
OZ2B	5,040-14-120-B-9
OZ3PO	2,716-14-66-A-4
OZ5LN	252-6-14-A-1
Eire	
EIBJ	20,352-24-285-B-13
EISC	6,825-13-178-B-18
EISF	3,315-13-87-B-16
EI9P	805-7-39-A-4
EI8D	195-5-13-A-4
EI9F	27-3-3-B-2
EISC (E. D. Doyle, W. Gallinan, B. J. Tulle)	44,544-24-637-B-53
England	
G5RI	65,268-39-558-B-60
G6GN	18,414-22-281-B-9
G3GRL	8,918-13-232-B-24
G3FBX	7,352-19-131-B-40
G3AFX	4,275-19-72-A-9
G5OZ	3,189-13-83-A-17
G2MI	217-7-11-B-1
Finland	
OH6NR	16,701-19-298-B-30
OH3OU	720-10-24-A-4
OH3NY	459-9-17-A-4
France	
F8VG	40,424-31-440-A-37
F3MS	17,388-28-208-A-20
F8TO	4,620-15-104-A-16
F8NY	4,485-13-115-A-4
F8PM	2,785-19-72-A-9
F8DV	2,785-19-72-A-9
F8DN	1,290-10-43-A-4
F8WK	801-9-30-A-3
F8BB	56-4-5-A-1
Germany	
DLAEF	71,558-37-651-B-90
DL1DX	28,179-31-303-B-19
DL2RO	22,794-29-262-B-9
DL1BR	21,300-25-284-A-16
DL1JN	14,352-26-184-A-15
DL1XF	10,395-27-129-B-9
DL6GB	747-9-25-A-4
Iceland	
TF3SF	43,225-35-418-A-57
TF3MB	12,784-16-269-A-4
TF3AB	9,956-16-191-A-4
TF3SG	4,173-13-109-A-7
TF3NA	3,111-17-63-A-7
Italy	
I1ER	4,020-15-91-A-30
I1LP	1,320-11-40-A-4
Netherlands	
PA8GN	18,564-28-221-A-40
PA8KW	16,894-22-258-A-45
PA8VB	15,900-25-212-A-38
PA8DA	4,500-15-100-A-13
PA8WAC	3,346-14-80-A-4
PA8FLX	1,728-12-48-A-45
PA8LDZ	150-5-10-A-4
PA8LY	24-2-4-A-1
Norway	
LA6U	11,066-22-170-A-4
LA8RB	6,096-16-127-B-10
LA3HA	5,782-14-139-A-18
LA4K	1,968-12-55-A-4
LA9T	1,160-10-39-A-30
Portugal	
CT1SQ	33,592-34-330-B-23
CT1AL	16,692-26-217-A-19
CT1DJ	11,201-23-168-B-20
CT1CR	2,180-10-73-A-6
Saarland	
9SAAX	8,610-14-207-A-46
Sardinia	
SI4HK	7,287-21-119-A-8
Scotland	
GM2FHH	11,022-22-169-B-24
GM6IZ	7,992-24-111-B-48
Spain	
E41AB	52,839-27-655-A-42
E43HE	19,833-29-463-A-26
E4SCS	13,750-22-213-A-26
E44AV	7,776-18-144-B-7
E43CF	6,812-13-184-B-13
E4SDF	4,511-13-116-B-17
Sweden	
SM3AKM	14,418-18-268-B-30
SM3QV	4,716-18-88-B-9
SM2RF	2,235-15-30-A-28
SM6ID	2,145-13-55-A-10

SM5CO	
SM5CO	1963-13-51-B-1
SM4UJ	1,023-11-31-A-4
SM6AOU	996-12-28-B-9
SM5IUI	224-7-11-B-10
SM4BEC	132-4-11-A-3
SM7AUH	105-5-7-A-9
SM5IZ	100-5-7-A-9
SM7YO	3-1-1-B-1
Switzerland	
HB9DB	6,858-18-127-A-22
HB9MU	6,517-19-115-A-22
HB9EU	3,878-14-95-B-4
HB9CI	3,248-14-78-A-7
Trieste	
AG2AG	2,748-12-77-B-14
Wales	
GW3ZY	77,996-31-842-B-38
GW3JZ	12,663-21-201-A-43
NORTH AMERICA	
Alaska	
KL7ANJ	34,452-33-348-B-12
KL7WC	33,372-32-77-B-27
KL7NXI	36,100-25-355-A-33
WP7LO/KL7	2,232-12-62-B-9
Bahamas	
VP7NM	193,546-58-1114-B-19
Bermuda	
VP9AL	54,694-41-452-A-20
VP900	35,800-25-478-A-25
Canal Zone	
KZ5LY	108,918-54-677-B-29
KZ5CB	17,430-14-415-C-8
KZ5CW	17,358-33-177-A-8
Cuba	
CO2BC	177,954-57-1043-A-35
Greenland	
OX3BI	10,432-16-218-B-12
OX3AP	2,982-14-71-A-4
Guantanamo Bay, Cuba	
KG4AF	518,833-83-2085-C-64
Mexico	
XE2OK	131,376-56-789-B-40
XE1SA	99,414-63-535-A-4
XE2G	1,320-11-40-A-4
Newfoundland	
VO2G	64-4-6-A-1
Puerto Rico	
KP4KD	169,443-67-843-B-36
KP4JE	80,370-57-478-B-23
KP4OD	43,560-36-411-B-21
KP4PK	10,374-14-247-B-6
Virgin Islands	
KV4AA	541,890-90-2015-B-72
KV4AQ	141,375-65-725-B-60
OCEANIA	
Australia	
VK2GW	82,576-52-530-A-54
VK2RA	74,195-55-450-A-30
VK2AWU	17,746-38-156-A-30
VK5FO	14,607-27-181-A-31
VK9XK	9,129-17-179-A-11
VK3AHH	2,023-17-40-A-14
Fiji Islands	
VR2CG	30,393-33-307-B-9
Hawaii	
KH6IJ	333,918-78-1427-C-67
KH6AEX	275,724-74-1242-C-9
KH6MG	260,996-71-1228-C-8
KH6FM	124,551-63-659-B-9
KH6DK	110,925-51-725-C-27
KH6FX	59,643-47-427-B-43
KH6ER	57,684-46-418-C-34
KH6WU	41,202-18-768-C-41
KH6ABF	9,039-23-133-A-15
KH6OL	630-10-21-A-4
KH6PX	138-6-8-A-4
New Zealand	
ZL1MB	171,920-56-1028-A-4
ZL1MQ	76,200-50-508-A-46
ZL3AB	11,502-18-213-A-4
Niue Island	
ZK2AA	57,480-40-481-A-32
Marshall Islands	
KX6AL	33,170-31-360-B-31

Brazil	
PY1ADA	46,968-38-412-B-25
PT7WS	34,238-38-301-B-9
PT2OE	26,526-34-360-B-9
PY4AJD	19,530-31-212-B-20
PT2AJ	9,780-30-111-B-12
PY7LJ	9,200-16-192-A-17
PY1HF	6,474-13-166-A-4
PT1AXP	870-10-29-A-4
PT1AIF	768-16-48-B-9
Chile	
CEAAD	28,148-31-303-B-9
Ecuador	
HC2OS	20,787-39-179-B-5

Peru	
OA4BR	8424-27-104-A-7
OA5A	8316-14-200-A-5
Venezuela	
YV5DE	31,552-32-331-A-52
Uruguay	
CX6AD	1890-10-63-A-9

- 1 W3NOH operator.
- 2 W3PZC operator.
- 3 W6CIS operator.
- 4 W6OEG operator.
- 5 W5LIU operator.

'PHONE SCORES

ATLANTIC DIVISION	
E. Pennsylvania	
W3LTU	86,940-92-315-A-9
W3GHS	39,039-77-169-B-37
W3FGB	30,690-62-165-B-37
W3CTJ	24,072-59-136-C-50
W3IMV	11,070-41-90-B-30
W3GHD	10,395-45-77-B-9
W3EYW	9,840-40-83-C-17
W3EQA	9,756-39-68-C-22
W3NA	6,138-33-62-B-12
W3LXL	2,912-26-38-B-10
W3CGS	2,376-22-36-B-20
W3PO*	972-12-27-C-12
W3RVM*	720-12-22-B-9
W3DWA	360-8-15-B-6
W3QLW	162-6-9-B-7
W3BES (W3LVE)	100,686-97-346-C-85
W3KT (W3OVV)	15,120-48-105-C-9
Mad.-Del.-D. C.	
W3PWR	38,520-60-214-C-9
W3IYE	18,375-49-125-B-40
W3ZQ	6,020-35-58-C-42
W3MSK	3,657-23-54-C-9
W3ANX	3,075-25-41-B-39
W3JYS	2,755-25-38-B-9
W3DRD	2,475-25-33-B-20
W3GR*	2,352-16-51-B-25
W3EIS	1,914-22-29-B-10
W. New York	
W2TXB	27-3-3-C-4
W. Pennsylvania	
W3LXE	9240-40-77-A-36
W3AER	1620-20-27-B-12
CENTRAL DIVISION	
Illinois	
W9LOG	3420-30-38-B-19
W9ZUL	1836-18-34-B-11
W9TPA	1170-15-26-B-25
W9DOR	72-4-6-A-3
Indiana	
W9UUN	16,335-55-99-B-46
W9LZP	3,480-29-41-C-31
Wisconsin	
W9RBI	75,558-98-256-C-9
W9EWC	54,114-87-210-C-49
W9DUB	26,544-56-160-B-9
W9CSU	7,035-35-67-C-20
W9DTX	3529-28-42-B-15
W9HPS*	2,592-16-54-B-22
W9GIL	2,520-24-35-C-12
W9VZP	1,188-12-33-B-26
DAKOTA DIVISION	
No. Dakota	
W0VSK	1,860-20-31-B-4
W0BPO*	610-10-21-A-14
So. Dakota	
W0PRZ	53,400-80-246-C-55

(Continued on page 132)



Multipliers of many W/VE entrants got a welcome boost from contacts with Wyn McGege, VR2CG, shown here with a native Fiji Islander. Wyn reported conditions somewhat different from those in other areas: "28 Mc. was perfect and 14 Mc. almost as good. However, I had extreme difficulty reading weak signals on 7 Mc., due to the high QRN level."

DX Contest Results

(Continued from page 53)

Minnesota

WØEDX	24,476	58-142-C-27
WØTKX	1701	21- 27-B- 8
WØRXL	576	12- 16-C-11
WØVIP	576	12- 16-B- 4

DELTA DIVISION

Arkansas

W5HFQ	11,223	43- 87-C-20
-------	--------	-------------

Louisiana

W5JVF	45,975	75-211-C-52
W5KC	10,584	42- 84-B-15
W5BMM	1944	18- 36-B- 7
W5CEW	420	10- 14-B- -

Mississippi

W5ZD	15,312	44-116-C-40
W5CKY	765	15- 17-A-12

Tennessee

W4DQH	61,236	81-265-C-56
W4FKA	624	13- 16-B-11

GREAT LAKES

Kentucky

W4SUD	6105	37- 55-C-52
W4KZ	1026	18- 19-B- 7

Michigan

W8VQD	15,750	50-105-C-24
W8NGO (W8CLR)	31,008	68-152-C- -
W8DUS (W8s RAE, UPN)	3286	31- 36-C-20

Ohio

W8JIN	75,423	93-272-C-58
W8BHW	49,932	76-223-C-40
W8LIO	30,888	72-143-C-64
W8BRA	19,488	56-116-B- -
W8AJW	14,168	56- 85-A- -
W8BF	7011	41- 57-C- -

W8FJR	4770	30- 53-A-16
W8SMC	2808	26- 36-B-10
W8ZJM	1980	22- 30-B-10
W8NXF*	1428	17- 28-B- 7
W8FCX*	1050	14- 25-A-20
W8AJH	54	3- 6-B- 2
W8AJH†	12	2- 2-C- 1
W8GUH	12	2- 2-A- 1

HUDSON DIVISION

E. New York

W2DSU	22,605	55-140-B-52
-------	--------	-------------

N.Y.C.-L.I.

W2WZ	26,510	55-162-C-31
------	--------	-------------

No. New Jersey

W2APU	34,452	58-198-B-52
W2GNO	16,698	46-121-B-23
W2ATE	5508	34- 56-B-11
W2JKH	3375	25- 45-A- -
W2ZVS*	3348	18- 62-B-16
W2JMC	3150	25- 42-B-12
W2NYY	2016	21- 32-C-30
W2CGJ	714	14- 17-B- 7

MIDWEST DIVISION

Iowa

WØNWX (WØJDV)	70	5- 5-C- -
---------------	----	-----------

Kansas

WØYZL	225	5- 15-B- 2
-------	-----	------------

Missouri

WØGUV	12,642	42- 98-C-34
WØANF	10,647	39- 91-C-33
WØBCF	8892	39- 79-C- -
WØGEK*	4968	23- 72-B-31

Nebraska

WØBBS	7385	35- 71-C-22
WØGKL	5301	31- 57-C-30
WØMGV	4620	28- 55-C-16

(Continued on page 134)

NEW ENGLAND*Connecticut*

W10DW.....2442- 22- 37-B-18
 W1AW.....100- 5- 7-C- -
 W1FTX.....27- 3- 3-B- 2

E. Massachusetts

W1AFZ.....84,252- 84-341-C-75
 W1AXA.....9840- 41- 80-B-24

W. Massachusetts

W1CND.....33,055- 55-203-B-30
 W1CLX.....6132- 28- 73-B-12

New Hampshire

W1BFT.....12,276- 47- 87-A- -
 W1FZ.....7260- 33- 74-B- -

NORTHWESTERN DIVISION*Oregon*

W7HIA.....39,480- 70-188-C-40
 W7AHX*.....5589- 27- 29-B-25
 W7MLJ.....2907- 17- 57-C-30
 W7HXG*.....1581- 17- 31-B- 3
 W7LNG.....336- 7- 16-B- 7

Washington

W7DL.....41,406- 67-206-C- -
 W7PQE.....3519- 23- 51-B-30
 W7AJS.....3300- 22- 50-B-14
 W7HAD.....2109- 19- 37-B-20

PACIFIC DIVISION*Nevada*

W7JUO.....10,836- 42- 86-C-30
 W7KIO.....5940- 33- 60-B-22

Santa Clara Valley

W6YX (W6s VUW, TOT, WZD, AOF, JHT).....21,900- 50-156-C-34

East Bay

W6NIG.....102,951- 93-370-C-90
 W6VVZ.....51,129- 69-247-C-90
 W6PYH.....36,642- 62-197-C-35
 W6LDD.....7938- 27- 98-C-50
 W6IDY.....5952- 31- 64-C-20
 W6PB.....4347- 23- 63-C-50
 W6JDO*.....1800- 15- 40-B-17
 W6EJA.....168- 4- 14-B- 4
 W6MVQ (W6UZX) 34,362- 69-166-C- -

San Francisco

W6ATO.....1395- 16- 31-C-15
 W6GPB.....96- 4- 8-B- 2

San Joaquin Valley

W6BYH.....360- 10- 12-B- 2

ROANOKE DIVISION*No. Carolina*

W4GXB.....4530- 30- 51-B- 8
 W4CEN.....4200- 28- 50-B-16
 W4NC³.....819- 13- 21-C- -
 W4AEH*.....96- 4- 8-B- -

Virginia

W4ESK.....149,517-111-449-C- -
 W4OM.....59,388- 84-237-C-75
 W4VAN.....37,233- 63-201-B-50
 W4KFC.....420- 10- 14-A- 2
 W4GQL.....324- 9- 12-B-15
 K4WCC.....192- 8- 8-C- 1

ROCKY MOUNTAIN DIVISION*Colorado*

W0NWW.....15,042- 46-109-B-60
 W0SBE.....14,490- 46-105-C-80
 W0AZT.....450- 10- 15-C-4

SOUTHEASTERN DIVISION*Alabama*

W4HA.....5916- 34- 58-C-18
 W4FMO*.....60- 4- 5-A- 4

E. Florida

W4EEO.....528- 11- 16-B- 8
 W4TRA*.....84- 4- 7-B-24

W. Florida

W4BGO.....25,047- 69-121-B-35
 W4TKL*.....54- 3- 6-A- 3

Georgia

W4NLY.....1836- 18- 34-B-30

SOUTHWESTERN DIVISION*Los Angeles*

W6AM.....64,428- 78-276-C-47
 W6BJU.....9090- 30-101-C-17

W6FSJ.....720- 10- 24-C- -
 W6UQQ*.....240- 8- 10-B- -
 W6BPD (W6FOZ).....792- 12- 22-A- 6

Arizona

W7PZ.....1215- 15- 27-B- -
 W7MOW.....600- 10- 20-B-12
 W7ENA*.....54- 3- 6-A- 1

San Diego

W6CTP.....20,608- 56-125-B-40
 W6CHV.....7350- 35- 70-B-20

WEST GULF DIVISION*Northern Texas*

W5BGP.....35,112- 66-180-B-43
 W5KUJ.....5589- 27- 69-C-29
 W5RPJ.....5124- 28- 61-B-32
 W5PXT³*.....1998- 18- 37-B-20
 W5AWT.....360- 10- 12-B- 6

Oklahoma

W5ALB*.....16,137- 33-163-B-36
 W5GZK.....5202- 34- 51-B-29
 W0TYE/5*.....252- 7- 12-A-11

Southern Texas

W5UBN*.....2300- 20- 39-A-19
 W5KCR.....1596- 19- 28-B- 7
 W5FNA.....192- 8- 8-C- 3
 W5LGG.....144- 6- 8-A- -
 W5GYM (W5NVV)*..1027- 13- 29-B- 5

New Mexico

W5LEF.....3380- 26- 44-B-26

CANADA*Maritime*

VE1CU.....144- 6- 8-A- 8
 VE1HQ (VE1s KZ, CM).....552- 12- 16-A- 4

Ontario

VE3AUJ.....36,018- 69-174-C- -

Quebec

VE2BV.....3782- 31- 42-B-40
 VE2AIE.....2664- 24- 37-A-10
 VE2BK.....855- 15- 19-B- 4
 VE2CK.....663- 13- 17-B- -
 VE2IZ.....585- 13- 15-B-10
 VE2AFC.....324- 9- 12-B- 6

British Columbia

VE7VO.....37,062- 71-174-C-52
 VE7BF.....26,796- 58-154-B-80

Manitoba

VE4RO.....31,212- 68-153-C-60

Saskatchewan

VE5CX.....54- 3- 6-A- 4

AFRICA*Algeria*

FA8BG.....1512- 12- 42-A- -

French Morocco

CN8FX.....740- 8- 30-A- -

Tangier

KTIDD.....10,556- 14-257-B-22
 KT1UX.....984- 8- 42-A- -

Union of South Africa

ZS6DW.....51,948- 36-481-C- -

ASIA*Japan*

JA8AB.....441- 7- 21-C- -
 JA2DV.....36- 2- 6-C- -

Turkey

TA2EFA.....438- 6- 25-C- 7

EUROPE*Belgium*

ON4YB.....2418- 13- 63-A- 7
 ON4CC.....972- 9- 36-A- 3

Denmark

OZ7SM.....5899- 17-116-A-18
 OZ7BG.....750- 10- 25-A- -
 OZ7G.....308- 7- 15-A- -
 OZ3EA (OZ6BC).....4275- 15- 99-A-18

England

G2PU.....15,000- 25-200-B-15

Finland

OH6NR.....540- 9- 20-A- -

France

F8SK.....14,841- 17-291-A-45
 F7AS.....96- 4- 8-C- -

(Continued on page 136)



Fourth high 'phone score from outside W/VE, 98,869 points, came from Enrique Lobo y Lobo, XE2W, whose transmitter ran only 120 watts to 807s.

Germany

DL4NV.....5970- 15-135-B-20
 DL4LL.....1632- 12- 47-C- -
 DL4LU.....1122- 11- 34-B-12

Iceland

TF3SF.....828- 12- 34-A- -

Italy

IIBDV.....15,776- 17-311-B- -

Netherlands

PAØBRG.....162- 6- 9-A-15

Portugal

CT1SQ.....5909- 19-105-B-20
 CT1UO.....767- 15- 17-A- -

Spain

EA2CA.....7042- 14-169-A- -

Sweden

SM5WJ.....2745- 15- 61-B- 9
 SM5PA.....630- 10- 21-B- -
 SM7VH.....132- 4- 11-A- -

NORTH AMERICA

Alaska

KL7WC.....5016- 19- 83-B-12

Barbados

VP6SD.....157,990- 61-884-B-72
 VP6WR.....57,772- 44-448-A- -

Costa Rica

TIZTG.....18,381- 33-187-C- -

Cuba

CO2BC.....2712- 12- 77-A- 8

Guantanamo Bay, Cuba

KG4AF.....15,148- 14-364-C-16

Guatemala

TG9AD.....66,861- 57-393-A-11

Greenland

OX3WX.....2370- 15- 53-A-15

Mexico

XE2W.....93,869- 59-539-A-21
 XE1QB (XE1SA)...30,030- 42-241-A-20

Puerto Rico

KP4DU.....21,141- 29-243-A-60
 KP4KD.....285- 5- 19-A- 1

Virgin Islands

KV4AQ.....20,352- 32-212-A- -

OCEANIA

Australia

VK4FF.....408- 15-131-A-11

VK3LN.....4914- 13-126-A-30
 VK5LC.....1470- 10- 50-A- 6
 VK5CE.....1320- 11- 40-A- 6
 VK5FO.....1122- 11- 34-A- 3
 VK3AHH.....870- 10- 29-A- 9
 VK4HD*.....441- 7- 21-A- 6
 VK2JZ.....9- 1- 3-A- -

Hawaii

KH6IJ.....159,432- 52-1002-C-44
 KH6AEX.....135,576- 56-807-B-51
 KH6MG.....120,612- 57-708-C-45
 KH6ABF*.....8208- 16-174-A-16
 KH6DK.....7483- 24-104-A- 9
 KH6ER*.....4680- 12-130-C-12
 KH6OL.....3088- 16- 65-A- -
 KH6PM.....2600- 10- 87-B- 5

New Zealand

ZL1HY.....14,976- 24-208-A-19
 ZL1MQ.....11,625- 25-155-A-27
 ZL3AB.....176- 4- 15-A- 2

Niue Island

ZK2AA.....2832- 16- 59-A- -

SOUTH AMERICA

Argentina

LU4CE.....1500- 15- 34-A- 6
 LU8AM*.....315- 15- 7-B- -

Brazil

PY2CK.....10,780- 22-165-C-13
 PY4RJ.....5208- 14-125-B- -
 PY6BP.....3528- 12- 98-C- -
 PY2ADT.....1144- 11-104-B- 5

Chile

CE4BX.....426- 6- 24-A- 5

Colombia

HK1DW.....3366- 17- 66-A- -
 HK1FE.....135- 5- 10-A- -

British Guiana

VP3HAG.....7756- 14-186-A- -

Peru

OA1E*.....819- 7- 40-A-11

Uruguay

CX3BT*.....189- 7- 9-A- 2
 CX7BA*.....165- 5- 11-A- 1
 CX2BP*.....96- 4- 8-B- -

¹ W4RA operator.

² W5LIU operator.

³ W8NFD operator.

* Operating 27 or 28 Mc. or both.