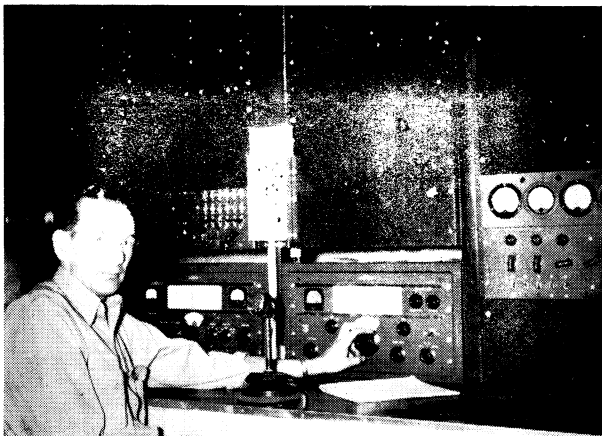


17th Sweepstakes Contest

PART II: Final Results — 'Phone Section



LAST MONTH we reported the final scores chalked up by c.w. contestants in the 1950 ARRL Sweepstakes. To complete the report on the 17th SS, the final scores of the 'phone contingent and the aggregate scores of groups participating in the club competition are presented. It is our pleasure also to include with these tabulations some photographs of the operators in both the c.w. and 'phone phases of the Sweepstakes who came up with award-winning scores.

Plagued by the atmospheric and ionospheric storms already mentioned, 'phone SSers probably found it more difficult to make contacts than did their brass-pounding brothers. Nevertheless, 'phone scores compared favorably with those of the previous Sweepstakes, when considerably better operating conditions prevailed. A few 'phones even topped their 1949 scores! Given a better break in conditions, this SS undoubtedly would have produced many more high 'phone scores than any earlier competition. The number of entries received was much smaller than that of previous Sweepstakes. It can be assumed that many of the participants who were forced off the air during the second week and didn't bother to submit the scores they tallied on November 18th and 19th. A total of 163 did submit entries and certificate awards are being made to the high scorer in each of the 57 League sections from which reports were received. Hearty congratulations to the 'phone award winners in the 17th SS.

Highlights

For three 'phone contestants it was truly an all-section Sweepstakes. W1ATE, W6QEU and W0DEI doggedly pursued the more elusive sections until they had worked all 72, a notable accomplishment in any contest and even more laudable under the poor conditions that prevailed in this activity. The persistent efforts of W3DHH brought him contacts with 71 sections. The following each worked 70 sections: W3KQU, W4CYC, W5FAG, W8NOH.

It remained for a 'phone participant to set the only new record made in the 1950 SS. W6QEU had 854 contacts and topped by a margin of one contact the previous all-time record of 853 made in 1949 by W6UBT operating W6OGZ. The fol-



Top left: Alvin U. Haugen, W0PRZ, South Dakota section 'phone winner, top-scoring W0 entrant. *Center:* Fred Keller, W8OYL, amassed 113,160 points to lead his call area and receive the Ohio c.w. award. *Lower left:* Reginald R. Cain, jr., W4CYC, made the top W4 score, won the Alabama section award.



CLUB SCORES

Club	Score	C. W. Winner	'Phone Wtinn
Potomac Valley Radio Club	2,752,924	W4KFC	W4LIM
Frankford Radio Club	1,975,751	W3BES	W3DHM
Rebel Radio Club	416,464	W4BRB	W4POF
Buckeye Short Wave Radio Assn.	381,943	W8OYI	
Wisconsin Valley Radio Assn.	354,289	W9RQM	W9ZTO
Baton Rouge Amateur Radio Club	305,792	W5NGN	
Queens Radio Amateurs	299,484	W2KPA	
El-Ray Radio Club	294,963	W1BOD	
Sandia Base Radio Club	280,086	W5FVO	
Hamden County Radio Club	262,885	W1JYH	W1CJCK
West Side Radio Club	261,663	VE3AWE	
Sioux City Amateur Radio Club	242,367	W0FZO	
Concord Brasspounders	204,134	W1AOQ	
Mid-Cities Radio Club	196,740		
Hutchinson Amateur Radio Club	186,056	W0DJE	
Detroit Amateur Radio Assn.	181,560	W8SCW	
Connecticut Wireless Assn.	179,664	W1BIH	
Garden State Amateur Radio Assn.	165,035	W2TPJ	
West Park Radiops	156,493	W8BWC	W8AJW
Narragansett Assn. of Amateur Radio Operators	152,975		
Northwest Amateur Radio Club	148,140		
Case Institute of Technology Radio Club	134,566	W8DAD	
York Road Radio Club	127,113	W3LVF	
San Antonio Radio Club	125,371	W6FNA	
Point Radio Amateurs	115,636	W9KXK	
Nassau Radio Club	111,947		
Syracuse Amateur Radio Club	112,545	W2EMW	
Dayton Amateur Radio Assn.	104,700		
Lancaster Radio Transmitting Society	103,716	W3NOK	
Columbus Amateur Radio Club	93,285		
Elmira Amateur Radio Assn.	65,796		
DX Club of Pennsylvania	64,882	W3BIP	
Oshkosh Amateur Radio Club	61,573		
Red River Radio Amateurs	45,681		
Springfield, Mo. Radio Club	35,572		
Milwaukee Radio Amateur Club	35,222	W9ONY	
Canton Amateur Radio Club	31,033	W8AL	
Philadelphia Wireless Assn.	27,847	W3QLI	
South Lyme Beer, Chowder and Propagation Society	26,642	W1DF	
Greater Cincinnati Amateur Radio Assn.	21,616		
Tri County Radio Assn.	18,533		
Green Bay Mike and Key Club	9717		
Stratford Amateur Radio Club	7438		
Eastern Mass. Amateur Radio Assn.	5290		
Tuboro Radio Club	4782	W2JSV	

Following tabulation lists the high scorer in each licensing area:

W1ATE	46,584	W9ZTO	29,120
W2PVG	20,956	W0PRZ	41,676
W3DHM	50,552	KH6MG	26,649
W4CYC	59,850	KL7PB	6201
W5FAG	56,438	VE1OM	320
W6QEU	122,832	VE2ID	8418
W7EYD	38,940	VE3BJO	4864
W8NOH	42,043	VE6TK	6240
	VE7VO	20,894	

Club Participation

Competing for the special gavel award offered to the club whose members submit the highest aggregate score, 47 groups submitted entries. The Potomac Valley Radio Club outpointed by a healthy margin the Frankford Radio Club, holder

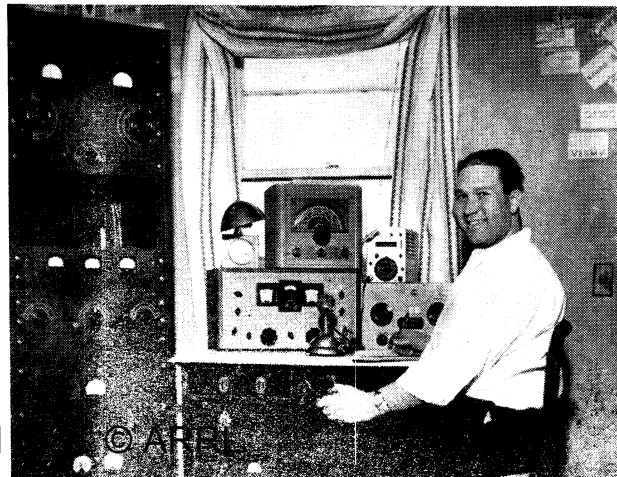
of nine SS club awards, to win the 1950 gavel. PVRC is now the proud possessor of two gavels, having won their first in the 1949 Sweepstakes. Third place was taken easily by the Rebel Radio Club, a group that will bear watching in future club competitions if the improvement they made this time over their 1949 aggregate (132,942 points) is any indication.

An accompanying tabulation lists the standings of other clubs that submitted aggregate scores. Special certificate awards are being made to the leading c.w. and 'phone operators in each club that submitted the minimum number of entries required by the rules.

The 18th ARRL Sweepstakes is scheduled for November 17th-18th and 24th-25th. Mark your

(Continued on page 124)

Lower left: Quebec c.w. award winner Thain H. McDowell, VE2NI, tallied the second highest score in Canada. *Lower right:* In addition to winning the Michigan 'phone award, smiling Louis Gerbert, W8NOH, racked up the highest score in the W8 area.



17th Sweepstakes

(Continued from page 63)

calendar now so that you'll be reminded to set aside those week ends for another bang-up operating experience.

'PHONE SCORES

Seventeenth Sweepstakes Contest

Scores are grouped by Divisions and Sections. . . . The operator of the station first-listed in each Section is award winner for that Section unless otherwise indicated. . . . Likewise the "power factor" used in computing points in each score is indicated by the letter A or B. . . . A indicates power up to and including 100 watts (multiplier of 1.25), B indicates over 100 watts (multiplier of 1). . . . The total operating time to the nearest hour is given for each station and is the last figure following the score. . . . Example of listings: W3DHM 50,552-357-71-B-33, or, final score 50,552, number of stations 357, number of sections 71, power factor of 1, total operating time 33 hours. . . . Stations manned by more than one operator are grouped in order of score following single operator station listings in each section tabulation; calls of participants at multi-operator stations are listed in parentheses.

ATLANTIC DIVISION

Eastern Pennsylvania

W3DHM 50,552-357-71-B-33
W3LTU 39,060-315-62-B-19
W3EVW 300- 12-10-A- 1

Md.-Del.-D. C.

W3PWR 7964- 91-44-B—
W3EQK 7520- 94-40-B-17

Southern New Jersey

W2PQJ 6273- 77-41-B- 6

Western New York

W2PVG 20,956-169-62-B-23
W2DGV 1975- 47-25-B- 6
W2WZQ 32- 4- 4-A- 1

Western Pennsylvania

W3KQU 34,510-250-70-B-36

CENTRAL DIVISION

Illinois

W9QJR 16,986-149-57-B-15
W9IFA 8500- 85-40-A-12
W9FZJ 1679- 37-23-B- 3

Indiana

W9RZS 3118- 43-29-A-14
W9DCM 2146- 38-29-B—
W9BKJ 249- 45-30-B- 6
K9FAB⁴ 214- 10- 9-A- 5

Wisconsin

W9ZTO 29,120-182-64-A—
W9JBF 18,480-133-56-A-17
W9PTN 10,750-108-50-B-15
W9FDX 7584- 79-48-B- 9
W9HDV 3038- 49-31-B- 9
W9FTY 2600- 40-26-A- 8
W9DOR 1815- 33-22-A-16
W9QJB 1600- 32-25-B- 8
W9NRP 595- 17-14-A- 3
W9VHA 495- 18-11-A- 6
W9VWX 193- 11- 7-A- 5
W9FEO 150- 10- 6-A—
W9EWM 16- 4- 2-B- 1
W9PMS/9 5- 2- 1-A- 1

DAKOTA DIVISION

South Dakota

W0PRZ 41,676-304-69-B-23
W0ILL 6930- 83-42-B- 9
W0LMB 1920- 32-24-A- 4

Minnesota

W0DEI 27,504-191-72-B-23
W0VIP 18,125-125-58-A-15
W0TKX 60- 6- 5-B- 1
W0BRA 32- 4- 4-B- 1

DELTA DIVISION

Louisiana

W5PXW 4710- 79-30-B-28
W5GHF 3100- 50-31-B—
W5RIQ 420- 14-12-A- 5

Mississippi

W5OAE 2688- 43-25-A-13

Tennessee

W4LUH 6750- 75-36-A-10

GREAT LAKES DIVISION

Michigan

W8NOH 40,425-231-70-A-30
W8BGY 2256- 47-24-B-10
W8PYP (W8s CRD FBV)
28,086-231-62-B-30

Ohio

W8AJW 42,043-251-67-A-29
W8LAX 16,530-144-58-B-20
W8OAC 6552-156-42-B-17
W8BNC 5996- 62-39-A- 9
W8BFH 5752- 59-39-A-13
W8MQG 2378- 41-29-B- 8
W8FNX 2016- 36-28-B- 5
W8FBZ 1138- 35-13-A- 6
W8TMA 750- 20-15-A- 1
W8NFD 518- 19-14-B- 2
W8VRK 304- 19- 8-B- 3
W8URD 10- 4- 1-A- 1
W8ZQH 3- 1- 1-A- 1

(Continued on page 126)

HUDSON DIVISION*N.Y.C.-L.I.*

W2BWC 14,672-131-56-B-14
 W2MQB 2125- 43-25-B- 8
 W2VQA 385- 14-11-A- 2
 W2RQJ 336- 14-12-B- 2
 W2DIC 146- 13- 9-A- 4
 W2NNH 80- 8- 4-A- 2
 W2DBI 70- 7- 4-A- 2
 W2VL 2- 1- 1-B- 1

Northern New Jersey

W2BTG 8442-101-42-B- 8
 W2DME 1680- 35-24-B- 6
 W2GKE 788- 23-14-A- 5
 W2JKH 585- 18-13-A- 1

MIDWEST DIVISION*Iowa*

W0HDX 1800- 30-24-A- 6

Kansas

W0BNU 21,390-173-62-B-29
 W0MUY 10- 2- 2-A- 1

Missouri

W0DEA 18,172-152-59-B-14
 W0MCX 18,150-165-55-B-26
 W0GUV 4026- 61-33-B- 6

Nebraska

W0RQK 27,280-178-62-A-35
 W0GYM 12,455-118-53-B-18

NEW ENGLAND DIVISION*Connecticut*

W1ATE 46,584-326-72-B-23
 W1LVQ 10,229- 98-53-B-12
 W1AW 40- 5- 4-B- 1
 W1IKE 8- 2- 2-A- 1

Eastern Massachusetts

W1BDF 40- 4- 4-A- 1

Western Massachusetts

W1CJK 15,860-154-52-B-14
 W1JR 5950- 69-35-A- 6
 W1JYH 3- 1- 1-A- 1
 W1EOB 2- 1- 1-B- 1

New Hampshire

W1BFT 7035- 67-42-A- 7
 W1JNC 6308- 87-29-A-17
 W1EWF 1188- 25-19-A- 6

Rhode Island

W1BFB 20,727-165-63-B-18
 W8TRX/1 3031- 49-25-A-12

Vermont

W1AXN 2376- 44-27-B-10
 W1MCA 442- 17-13-B- 2

NORTHWESTERN DIVISION*Alaska*

KL7PB 6201- 84-39-B- 7

Oregon

W7MLJ 31,620-257-62-B-28
 W7GUR 1280- 40-16-B- 8

Washington

W7EYD 38,940-265-59-A-31
 W7QGN 11,004-132-42-B-26

PACIFIC DIVISION*Hawaii*

KH6MG 26,649-213-63-B-27
 KH6IJ 4379- 76-29-B- 4

Nevada

W7JUO 17,051-145-59-B-18

Santa Clara Valley

W6BTE 30,475-230-53-A-30
 W6YX (W6s FZB IVX TOT VUW
 VXL WVP/DSS WZD ZBB)
 56,097-414-69-B-40

East Bay

W6TT 17,680-170-52-B- 8
 W6RLB 4588- 63-37-B-13
 W6RRH 125- 10- 5-A- 3

San Francisco

W6YGQ 4414- 54-33-A-21

San Joaquin Valley

W6QEU 122,832-854-72-B-35

ROANOKE DIVISION*North Carolina*

W4MRH 12,500-125-50-B- 8
 W4IZR 8550- 93-38-A-18

South Carolina

W4AZT 2744- 50-28-B- 4

Virginia

W4LIM 33,396-256-66-B-40
 W4FV 22,116-194-57-B-25
 W4KMS 13,568-128-53-B-22
 W4NUU 1064- 28-19-B- 8
 W4KVM 956- 26-15-A- 1
 W4KFC 630- 18-14-A- 1
 W4JUY 40- 4- 4-A- 1

West Virginia

W8UYR 16,958-140-61-B-23
 W8CKW 588- 21-14-B- 1

ROCKY MOUNTAIN DIVISION*Colorado*

W0FUH 595- 17-14-A- 1

Utah

W7NPU 8250- 78-44-A-11

SOUTHEASTERN DIVISION*Alabama*

W4CYC 59,850-430-70-B-37
 W4HA 11,607-110-53-B- 9

Eastern Florida

W4CPG 38,285-300-65-B-30
 W4POF 35,440-222-64-A-31
 W4AYX 11,396-130-44-B-37
 W4BRB 1811- 35-21-A- 2
 W4QED 220- 11- 8-A- 3
 W4RTX 5- 2- 1-A- 1

Western Florida

W4AGB 32,004-253-63-B-35

Georgia

W4LXE 41,538-303-69-B-22

(Continued on page 128)

SOUTHWESTERN DIVISION

Los Angeles

W6AM 32,562-243-67-B-20
W6BUK 832- 26-16-B- 6
W6KJK (W6MJA) 25,300-230-55-B-38

Arizona

W7PUM 39,060-248-63-A-28
W7OPS 2808- 53-27-B- 3

San Diego

W6CHV 43,065-261-66-A-34

WEST GULF DIVISION

Northern Texas

W5RIY 13,680-115-48-A-13
W5LFQ 13,513-118-46-A-26
W5PXT¹ 1541- 34-23-B- 3
W5AWT 1416- 30-24-B- 5
W5ATW 504- 18-14-B—

Southern Texas

W5IHD 11,564-118-49-B-34
K5NRG² 1040- 26-16-A- 5
W5LGG 50- 10- 2-A- 1

New Mexico

W5FAG 56,438-323-70-A-36
W5SMA 52,140-316-66-A-39
W5RXC 26,847-240-57-B-23
W5NXF 5890- 62-38-A- 5
W5MYI 4818- 75-33-B- 9
W5KAO 3422- 60-29-B- 6

CANADA

Maritime

VE1OM 320- 16-10-B- 3

Ontario

VE3BJO 4864- 64-38-B-14
VE3RM 4720- 60-40-B-12
VE3DEP 143- 10- 6-A- 7

Quebec

VE2ID 8418- 93-46-B-22
VE2AHE³ 7956-102-39-B-13
VE2BK 2106- 39-27-B- 4
VE2IZ 234- 13- 9-B- 8

Alberta

VE6TK 6240- 78-40-B-22

British Columbia

VE7VO 20,894-171-62-B-31
VE7VP 2880- 47-32-B-17

¹ W5LIU, op. ² W5UPC, op. ³ VE2RP, op. ⁴ W9CMK, op.